

# Cooper Point Journal

Volume XVIII 19

Issue #1

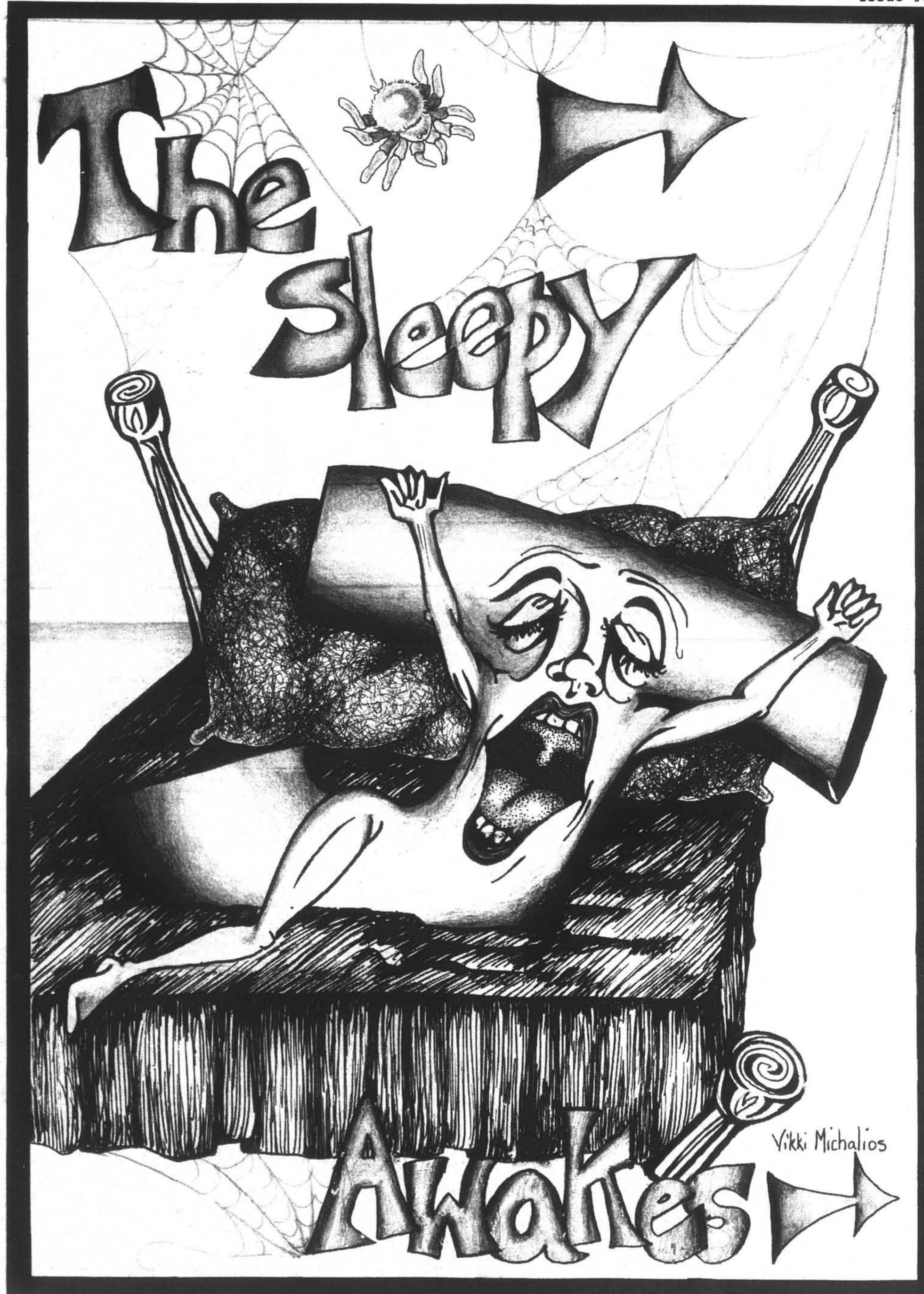
## THE FUNNIES!

<p><b>ANYTHING said by Reagan...</b></p>	<p><b>Tasteful Comics...</b></p>	<p><b>Publicized Spirituality...</b></p>
<p><b>Hitler's "friends" after he LOST the war...</b></p>	<p><b>RAMBO!</b></p>	<p><b>People dressed as grapes...</b></p>
<p><b>The Middle East's continued attempts to have the scruffiest-looking army in the world...</b></p>	<p><b>Silly Acronyms...</b></p>	<p><b>Crystals...</b></p>
<p><b>Rock Music Analysis...</b></p>	<p><b>Goofy comics of El Salvadorine Death Squad Victims...</b></p>	<p><b>Nancy Reagan</b></p>
<p><b>T.V. Evangelists...</b></p>	<p style="text-align: center;">These are things it is recommended you laugh about...*</p>	

\*Simply because no one can really take them seriously...  
© 1988 Edward Moran, Inc.  
THIS LIST IS NOT DEFINITIVE...

Non-profit Organization  
 U.S. Postage Paid  
 Olympia, WA 98505  
 Permit No. 65

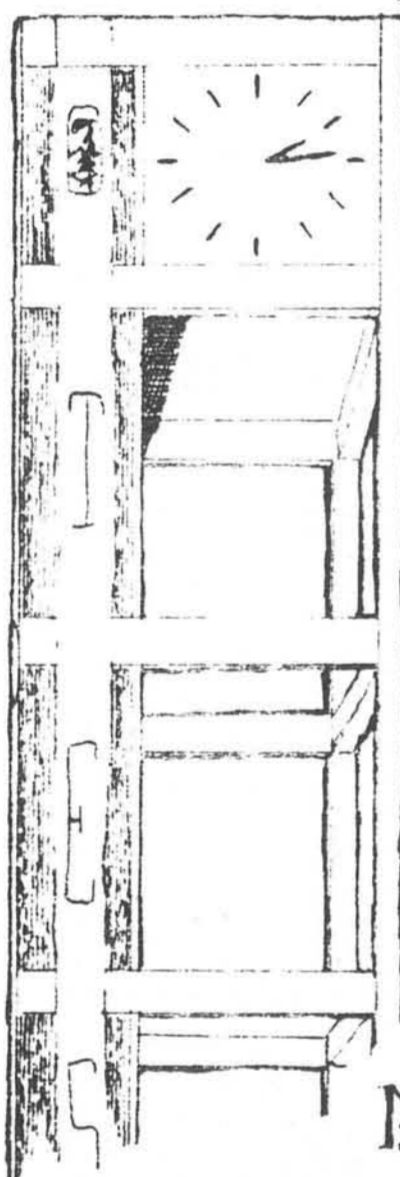
The Evergreen State College  
 Olympia, WA 98505  
 Address Correction Requested





## CONTENTS:

Page 1:	Editorial Policy
Page 2:	Letters
Page 3:	Who am I
Page 4:	Governance
Page 5:	Chemical Dangers
Page 6:	Editor's Note
Page 7:	Last Days of Summer
Page 9:	Greener Myths and Month Feature
Page 10:	Olympia Column
Page 11:	Poetry Page
Page 12:	Pet Policy
Page 14:	Calendar/ Classified
Page 15:	KQAS Schedule



## The Staff:

Ad Layout and Life Saver: Julie Williamson  
 Editor: Darrel W. Riley  
 Interim Managing Editor: Suzette Williams.  
 Interim Advisor: Janis Byrd  
 Advertising Manager: Chris Carson  
 Calendar Editor: Catherine Darley  
 Interim Business Manager: Tanya Schouten  
 Layout: Whitney Ware  
 Layout: Michelle Hoffman  
 Layout: Lara Mishler  
 Photo Editor: Larry Cook  
 Poetry Editor: Jeff Large

## Editorial Policy

The Cooper Point Journal (CPJ) editor and staff reserve the right to amend or clarify these policies as necessary.

### Objective:

The CPJ editor and staff are determined to make the CPJ a student forum for communication which is entertaining and informative.

### Deadlines:

Calendar, Friday Noon  
 Articles, Friday 3:00 pm.  
 Letters to the Editor, Monday Noon.

The editor reserves the right to accommodate deadlines for late-breaking news.

### Rules for submissions:

Submissions must be original work! Submitting work which is not original is a legal, ethical, and moral violation of the CPJ, and an injury to those members of the Evergreen community who complete original work.

Submissions should be brought to the CPJ offices on disk, either IBM or Macintosh format. For the IBM, any word-processing program output compatible with WordPerfect 4.2 will be acceptable. For the Macintosh submissions must be made in ASCII format. (If you have a question about either of these rules call the editor for further explanation.) All disks should include a double-

spaced printout, with the author's name, daytime phone number, and address. Disks will be returned as soon as possible.

### possible.

Typed double-spaced copy with one-inch copy is also acceptable, although disks are preferred.

Handwritten copy is unacceptable.

Because the CPJ is a college newspaper, priority will be given to student submissions, however other community members are encouraged to contribute.

### Letters:

Letters will be accepted on all subjects. Letters may be up to 300 words. All letters will be checked for libel.

### Advertising:

All advertising will be sold by Monday night, and layout will be completed by Tuesday night.

In consideration of free speech all forms of advertising will be accepted.

### Objectivity:

The editor does not believe in objectivity. Instead, the CPJ editor and staff will practice a doctrine of fairness. The editor and staff will make every effort to get as many viewpoints on a subject as possible. The editor needs the Evergreen community to help him with this task. If you have an opinion on something you've read in the paper, call.



Cooper Point Journal September 29, 1988 Page 1

## Gail Martin extends welcome

On behalf of myself and others, I want to welcome new and returning students to the 1988-89 academic year. For those of you who are new to Evergreen, we hope you will find this college experience challenging, worthwhile, and fun, as well. To all those returning Evergreen students, we say welcome back to another year.

In the Student Affairs division, our goal is to make your transition or return to Evergreen during registration and orientation as smooth as possible. Throughout the week before classes began, we offered a

wide variety of programs aimed at getting you enrolled, informing you about life in and outside the classroom, and we attempted to entertain you as well. Please feel free to let us know if we accomplished our goal.

Again, welcome to Evergreen and to a community of people who care about you, your education, and the quality of your life at The Evergreen State College.

Gail Martin,  
 Vice President for Student Affairs

CLASSIFIEDS  
 CAN HELP!

CALL  
 866-6000 X6054

CRYSTALS • BOOKS • MINERAL SPECIMENS • JEWELRY  
 CRYSTAL SPHERES • COLLECTOR PIECES • HEALING TOOLS

Welcome Back Students

10% OFF  
 October's Birthstone  
 TOURMALINE  
 Expires Oct. 31, 1988

Earth Magic  
 205 EAST FOURTH  
 754-0357

## OUR STUDENT LOANS MAKE THE GRADE.



Guaranteed Student Loans for graduates and undergraduates. No interest payments until after graduation or withdrawal. Up to ten years to pay back at just 8% annual percentage rate.\* Payments as low as \$50 per month.

Maximum loan amounts: \$2,625 Freshmen/Sophomores  
 \$4,000 Juniors/Seniors  
 \$7,500 Graduate Students

Ask your school's financial aid office for an application and details. Or call the friend of the family at (206) 464-4767. We're out to make your education more affordable.

\*This rate does not necessarily apply to students with existing loans.

Washington Mutual   
 The friend of the family

Washington Mutual  
 Financial Group

GLAD YOU'RE BACK

enjoy a  
**FREE**  
 cup of the  
 world's best coffee



expires Oct. 31, 1988

233 NORTH DIVISION • ONE BLOCK NORTH OF HARRISON

## WELCOME BACK

SAVE MONEY  
 BUY SCRIP

FOR DETAILS CONTACT  
 FOOD SERVICE OFFICE



## L' Shana Tova

"to a good year"



Maarava cordially invites all  
 community members to acquaint  
 themselves with Evergreen  
 Jewish Cultural Organization.

As Olympia's primary resource for support,  
 Maarava provides a way for all community members to  
 partake of Jewish education and activities.

VOLUNTEER FOR PLANNING &  
 ORGANIZATIONAL MANAGEMENT

Please come visit or call for office hours, schedule of  
 upcoming events and volunteer information.

LIB. 3214 866-6000 ext. 6493



# An editor's essay: Who am I?

By Darrel W. Riley

I am the descendent of a bastard son of a Scottish king: my great-grandmother was a whorehouse madam. I am that child of former slaves and former slaveowners: I am the son of bandits and sheriffs. I am the child of Africa, of Europe, of Asia, and of America. My ancestors were here when the first European boats landed in this country, my ancestors came as slaves from the Dark Continent, my ancestors came as laborers to work on the railroads spanning the West, my ancestors came from Europe to escape their terrible poverty.

I have been to school with the poorest, and I have been to school with the richest. I have lived in the heart of the inner-city, and I have lived in the fresh air of the country.

Who am I? I am the new editor of the Cooper Point Journal. My skin is brown, my mother is white, my father is black. My family are extraordinary, but no more extraordinary than anyone else's.

My father grew up in Little Rock, Arkansas in the 1940's and 1950's, during a period when a great turbulence was upon the nation. He was the first black man to become athletic director in the state of Arkansas. He escaped from the South by joining the military. The military was his education. After he got out, moved to Seattle, and married my mother, his best friend was killed because the white ambulance drivers would not carry him to the hospital. I have always

been grateful that my father found a way out of the trap of expectations, many did not and most died.

When I was growing up my father was determined that his son would not go into the military, not experience the horror and shame that he had experienced. It was not my path to salvation, in his eyes, it could only be my destruction. I respected my father's wishes, and more than that his wisdom. My father has followed his path, mine lies in a different direction.

My mother grew up as the only child of two brilliant people, my grandparents. She has tried to give me the best of schooling, education, and social skills so that I could survive.

Today my parents are both pursuing their dreams, my mother as a tour guide and my father as a business consultant.

When you meet me, do not ask me if I feel bitter about white people. White people are not white people to me, they are my family. Denying white people would be a denial of my heritage. Neither do I feel bitter about being black. Black people are my heritage, they are my family, and I am Black.

Many are confused about who I am. The other day I met a woman at Evergreen who looked like my mother. When I told her that she was incredulous, asking me if she could really look like my mother, after all didn't I know that she was of a different ethnic background than I am. Different? Because our skin color is different?

When I was young I often used to hear that children of mixed marriages would be confused about their identity, not knowing whether to be Black or White? Must we be one or the other? My parents are my parents, I do not know

any differently. How can I be confused? Once my aunt was asked what is was like to be Black in America. She answered this way, "I don't know I've never been Black anywhere else."

I do not encourage stereotypes. To me the difference between Black and White is blurred, and often an arbitrary and unnecessary difference.

However, I feel compelled to make a special effort to learn about People of Color because there has been a special effort to repress that learning. If Native American people were shown in history books as having been in this country for many thousands of years, with a thriving and successful culture I would not make a special effort to learn about it. Instead the history of the Native American contribution to this culture is forsaken. We hear about the contributions of Columbus, the Pilgrims, Lewis and Clark, and multitudes of other "explorers". What about the people who had already settled that land?

My grandmother belonged to the Blackfeet tribe in Montana. There are stories that the Blackfeet were so named because of their constant explorations and journeys through the Land of Many Smokes (now called Yellowstone National Park) which blackened their feet. Is that not exploration? George Bush, and former Education Secretary William Bennett are fond of using Martin Luther King Jr.'s word, "judged not by the color of their skin but by the content of their character." Those are profound words, words to study and live by. But that is not the social reality. Many wrongs have been done,

not just to People of Color themselves but to their roles in the history books. I do not want to be another person who perpetuates the false myths of history. I do not want to be a man who glories in men like Buffalo Bill Cody whose fame lies in the fact that he killed many of the last buffalo from the American Plains. I am not gladdened by the Iranian destruction of American soldiers by missiles which the American government has sold them. I cannot respect a man who decries another man's patriotism. In the name of American patriotism millions of lives were unnecessarily lost, as in the Phillipines during the first part of this century. In the name of German patriotism people who were considered "unfit" to the German ideal were destroyed. Is this something to be proud of?

Over the course of this year I will do my best to change or shatter stereotypes. I feel it is part of my job as a writer, and as a human being. You will begin to know me very well over the course of this year. When I fail, it will be a very public event. When I succeed it will be because of my staff. And yet, I will have fun. I want you to have fun. If you have comments, suggestions, ideas, or just want someone to talk with come in and see me, or leave me a note. I'll be busy this quarter, but I'll do my best to set time aside to talk.

Who am I?  
I am a human being, with the responsibilities that being a human implies, and the frailties I incur.

# The history of governance

By Dante Driver

As a new student at Evergreen I've been interested finding out how student government works here. The college catalog and orientation have been somewhat vague about this.

The catalog states that "Evergreen has a system of meetings, committees, mediation, appeals and grievance resolution set out in WAC..." (Washington Administrative Code)...174-107," and that "The Social Contract" "...states the mutual goals and purposes of the college as reflected in the rights and responsibilities of all the members of the campus community." According to the catalog DTFs, or Disappearing Task Forces, are temporary committees "...to study problems, make recommendations and then disappear."

Yea, that's nice but who represents the student body and how does governance work? At Evergreen, it's been my experience that the typical response to these questions is usually head shaking and often laughter. I finally got some answers when I asked Gail Martin, Vice President for Student Affairs.

During the early days of the college it was hoped that Evergreen could maintain a "Community Governance" philosophy based on The Social Contract. For this reason DTFs represent all constituencies, faculty, staff, and Students. Another institution based on this philosophy was the Sounding Board, later the Evergreen Council. This was a body of (9 - 16) students

to whom anyone could bring their concerns. For various reasons the Sounding Board didn't work and it ceased to exist.

By the 1980s faculty had organized the faculty Governance Agenda Committee and the secretaries, maintenance, and any other staff which is not with the administration had unionized and formed the Union Management Committee. The Students were the only constituency remaining with no real government to represent them in a systematic, organized fashion.

Since that time interest in student governance has increased. In December 1985 President Olander established a December 1985 requirement for the establishment of a student government and asked Gail Martin to be in charge.

An ad hoc student government existed at that time. Vice President Martin tried unsuccessfully to officially implement it. In 1987 she charged a DTF with making a recommendation on

the establishment of a student government. This recommendation was not accepted, largely because of a controversial provision for autonomous funding through a mandatory fee. However, part of this recommendation was implemented as an Interim Student Governance Committee.

Gail tried to solicit students to serve on this committee. These students declined to serve after being dissuaded by fellow students because the Interim Student Governance Committee was not a "grass roots" initiative.

More recently the S & A Board has made a resolution establishing a new Interim Student Governance Committee. This committee is responsible for developing a process which creates a student governance proposal. This proposal should be ready for student approval by the Evergreen Board of Directors by Spring 1989. Between October 17-21, this proposal will be presented to students in their seminar groups and

their input will be solicited.

So the answers to my questions are that there is no government representing the student body in a systematic organized fashion. Determining how governance works can't be established until we know what it is.

## CPJ presents geographic feature

How much do you really know about the countries Evergreen exchange students come from? Do you just nod and smile when a student says "I'm from \_\_\_\_\_?" Well we're going to cure your ignorance (or try to at least)!

At regular intervals the CPJ will feature one country from which Evergreen has exchange students. We'll do the research for you and let the students tell us something about their countries. Watch for this feature beginning in October 13, 1988 issue of the CPJ and amaze your friends with your geographical knowledge.

### RESEARCH PAPERS

16,278 to choose from—all subjects  
Order Catalog Today with Visa/MC or COD  
TOLL FREE 800-351-0222  
In Calif. 213-477-8226  
Or, rush \$2.00 to: Research Assistance  
11322 Idaho Ave. #206-SN, Los Angeles, CA 90025  
Custom research also available—all levels

**AVE 4th TAV**

**RAZOR BACK**

FRI & SAT  
SEPT 30 & OCT 1  
COVER \$4.00

**SWEAT BAND**  
EVERY WED • \$2.  
210 E 4TH • 786-1444

Notice



Notice

## STUDENT BOARD MEMBER and ALTERNATE BOARD MEMBERS

for  
The 1988-89 Services and Activities Fee Review Board  
are currently being solicited.

### Applications

S & A Administrative Office  
CAB 305  
The Evergreen State College  
206-866-6000 x6220

### Closing Date

All applications must be filed  
with the S & A Administrative Office;  
CAB 305 by 5 p.m.  
Friday, Oct. 6, 1988

### arc ibald sist mail order catalogue

perfume oils  
lotions  
bath gels  
facial care  
glycerin soaps  
massage oils  
potpourri

113 W 5th Olympia, WA 98501 (206)243-2707

Treat yourself to the finest!  
• Private Hot Tub Rooms  
• Therapeutic Massage  
• Wolff System Tanning

### THE GREAT ESCAPE!

HOURS: 11 am-11 pm Sun-Thurs  
11 am-1 am Fri-Sat



**TOWN TUBS**  
and Massage  
943-2200  
115 E Olympia Ave Olympia, WA 98501

Welcome Evergreen Newcomers and Students.  
We've been here for years, in downtown  
Olympia, serving BREAKFAST • LUNCHEON •  
HIGH TEA • FRESH SEAFOOD  
DINNERS 8-10pm (except Sundays).  
We're small, intimate and fun!  
We carry unusual gifts and lots of children's  
classic cottons infant thru 14. We also have  
a UPS drop off.  
We love you! You'll love us!

*Buck's Fifth Avenue*  
209 E. 5th

**great pizza**

**CASA MIA**  
8th and Plum, Olympia  
352-0440

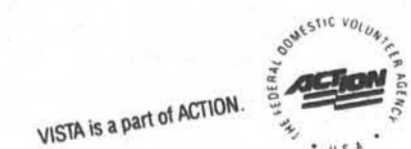
## VISTA VOLUNTEERS BRING OUT THE BEST IN AMERICA

VISTA (Volunteers In Service To America) offers you the challenge of a one-year full-time commitment to fight poverty in America. Use your education and your talents to help the poor. Gain experience while developing your skills. Additionally, VISTA volunteer service qualifies you for deferment of many student loans and for partial forgiveness of National Direct Student Loans.

By the end of your service, you'll know the satisfaction and accomplishment, the confidence and pride that VISTA offers—the opportunity to truly make a difference.

Join **VISTA**. Serve in the U.S.A.

For more information on VISTA,  
call 1-800-424-8867.



VISTA is a part of ACTION



## Pesticides raise questions

By Kirk Jones

A parking attendants concern regarding campus pesticide spraying came to attention of the CPJ last week. Earlier this summer the parking attendants booth was sprayed to get rid of wasps, bees, and spiders. The parking office reported that those who sprayed concentrated specifically on the booth and a Hazardous to Your Health warning sign was posted.

This initial spraying raised curiosity about the amount of spraying done on campus. George Leago, head of maintenance, reported that only one problem requiring the use of a chemical to control specific pests infesting trees behind the library was apparent. The maintenance staff noticed that one of the trees was withering and loosing strength. A closer look revealed two deadly pests, scales and aphids. Maintenance Supervisor George decided to use some type of spray on this tree to control the pests and stop them from spreading to other trees in the area. George explained that before any chemical can be used in quantity on campus it first must be reviewed by the Environmental Advisory Committee.

With this in mind, George decided to use Safer Soap, a household soap available at most grocery stores, that consists mainly of potassium and fatty acids, both biological elements. The Safer Soap was used on the infected tree and apparently has killed most of the Aphids and Scales. A second spray might be necessary to



George Leago deals with pests  
Photo by Kirk Jones

control the Scales larva, but for Maintenance to use it in quantity they would be required to address the environmental panel.

George explained that this was the only spraying done this year that he was aware of, and that he had heard nothing of the spraying done at the parking booth or what kind of spray it was.

Students and faculty alike should be cautious on campus when being around areas sprayed or treated with chemicals. Additional reports on campus spraying and chemical use will be printed in the CPJ as we find out more information.

DISPLAY  
ADVERTISING  
866-6000  
X6054

## Carpets make noxious fumes

With the recent carpet installation at Evergreen have come complaints of fumes being emitted from the carpets and adhesives used in the process. New carpet is being laid in the new MacIntosh Laboratory of the computer center, the Dean's advisory center, and the second floor of the library.

Faculty and staff from all three areas have been able to smell fumes but not all of them have had reactions to the fumes.

Concern has grown about toxic formaldehyde fumes from the carpet adhesives and elements in the carpets.

A member of the library staff reported that they had not experienced problems with the fumes.

It's a different story in the Dean's area. On Wednesday, head of facilities, Ken Jacobs, explained that the staff had experienced problems with the fumes, and complained of eye irritation.

The problem of formaldehyde fumes is common to every carpet laying procedure, says Jon Collier, Evergreen's chief architect. Formaldehyde has been an agent in all of the carpet adhesives Evergreen has used so far, but Facilities head Jacobs is searching for an adhesive that does not contain formaldehyde.

Although not everyone is allergic to formaldehyde

fumes, they are toxic, and hazardous if inhaled in excess, Jacobs said. In an effort to check this problem the college has adopted a policy in its contracts with carpet laying companies that places the liability for neglect, or lack of proper measures to insure safe formaldehyde levels, with the company. This amendment to Evergreen's contracts forces the carpet company to be more careful and thorough in their installation.

After the installation, the carpet company must place fans in the area to aid in ventilation, and insure a thorough cover and safe level of formaldehyde when laying the carpet on the adhesive.

Jill Lowe, the safety officer on campus, was unaware of the problems with the carpet laying. Jill explained that in an adequately ventilated area the fumes should disperse within a 24 to 48 hour period.

Students, faculty, and staff should be cautious about spending too much time around the new carpets until the fumes have had a chance to wear off. Plan your time in the library, the computer center, and the Dean's offices areas carefully to keep your exposure at a minimum.

## GOD, ARE YOU TESTING ME?

By Darrel W. Riley

Sir Arthur Conan Doyle's famous character Sherlock Holmes once solved a case because of the "dog that didn't bark". This orientation issue of the Cooper Point Journal is something like the dog that didn't bark. The subplot to this drama (or comedy) seems to be, how a simple question raises hackles.

The biggest dog that didn't bark was over the summer. I applied to be editor last spring and did not get the job. Because I was not hired as editor I did not devote a lot of time over the summer to preparing for the production of the paper.

Two weeks ago the head of the Communications Board, Jeanine Thome, called me and asked me if I would again consider being editor. So here I am. Time was short, the advisor (Susan Finkle) had resigned, and I wasn't sure who I could count on to turn out this issue. That you are reading this issue at all is a testament to some very dedicated people: Whitney Ware, Suzette Williams, Larry Cook, Chris Carson, Janice Byrd and all of the others you see in the staff box, plus a plethora of people that we haven't listed. A sampling of those whose help we put together this first issue include the security guards who have patiently opened the door for my staff and I as we tried to discover how to get keys, the janitor who has done his best to clean up in an area of complete chaos, many friends who have expressed support and curiosity about what the paper will look like this year, and many many others. I want to take this opportunity to thank them all.

Just in case it wasn't exciting enough to have a first issue without problems, we discovered on Tuesday night that the typesetting machine we use to produce the paper was broken. Am I being tested for a purpose, God?

This paper is being produced on my home laser printer. I'm not sure I can tell the difference between this copy and the normal typesetting machine, but I'm sure that there will be many people who are able to tell and who will write me about it. However, if you see another type style next week it's because things are working properly. If you see the same type style, pray for us.

I wanted to start this year's paper by having some simple articles. Like, for instance, about Governance. I sent a very nice young man, Dante John Driver, out to find out all he could about Student Governance for

a simple article about how Governance works. He managed to write something on what we found, but by the time he turned in his article I began to feel that there was a conspiracy to keep students from understanding Governance at Evergreen. I know intellectually that there isn't a conspiracy, but with all the difficulties Dante had trying to get his questions answered I began to wonder.

Or yet another non-barking dog. In a casual conversation I found out that there was new carpet being laid in the computer center. When new carpet was laid last year in the computer center a lot of people became quite ill. My source said that the ventilation in the building was being turned on longer to help get rid of some of the fumes. Later that day I encountered a friend of mine who works in the Library Building who has been ill recently, and

suggested that the recirculation of the air in the building with its noxious fumes might be partly responsible. So I wanted to know if students needed to be concerned about the new carpets and asked a young man named Kirk Jones to investigate it for me. You would think he was asking about America's nuclear plans. Some people didn't respond, the ones who did respond either said that they didn't know about the increase in ventilation, or that it had not been turned up. Simple question, much excitement. Weird.

My job as editor is not to cause trouble or to stir controversy for the sake of being a rabble-rouser. My job is to produce a medium which INFORMS. I would like it to be entertaining, and for each issue to have something in it that will make you want to keep it. If you have ideas or suggestions for making this

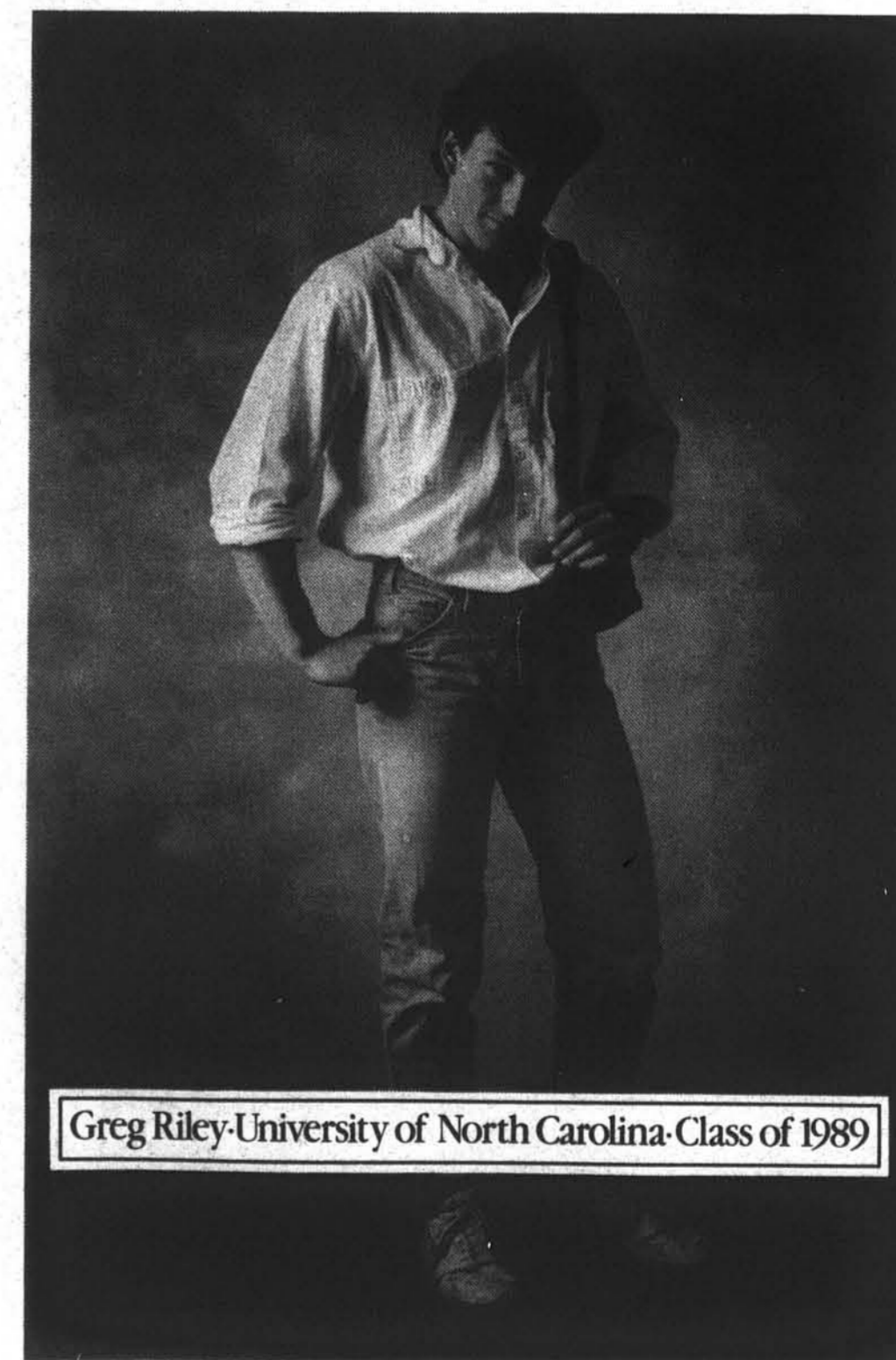
a better paper I want to know what you think.

But, I cannot produce this paper without your help. If you are interested in any part of the publication of the paper, especially writing or production, we need you. In another section of the paper is a list of the features of the paper. If you are interested in writing any one of them, or you have your own ideas for topics to write about please write me, or give me a call at the CPJ.

In the meantime, I hope you enjoy your first issue of the 1988-89 Cooper Point Journal.

STUDENT  
GROUPS  
½ PRICE  
on all display  
advertising

"I don't want a lot of hype. I just want something I can count on."



Greg Riley-University of North Carolina-Class of 1989

Some long distance companies promise you the moon, but what you really want is dependable, high-quality service. That's just what you'll get when you choose AT&T Long Distance Service, at a cost that's a lot less than you think. You can expect low long distance rates, 24-hour operator assistance, clear connections and immediate credit for wrong numbers. And the assurance that virtually all of your calls will go through the first time. That's the genius of the AT&T Worldwide Intelligent Network.

When it's time to choose, forget the gimmicks and make the intelligent choice—AT&T.

If you'd like to know more about our products or services, like International Calling and the AT&T Card, call us at 1 800 222-0300.



The right choice.

**BROWSERS' BOOK SHOP**  
**Welcome Back**  
Used & Out Of Print Books  
107 N. Capitol Way  
downtown  
357-7642  
**OPEN SUNDAYS**

ART SUPPLIES  
**OPAS**  
DRAFTING SUPPLIES  
Olympia Pottery & Art Supply, Inc.  
We Carry All Of Your Back-To-School Art Supplies  
1822 W. Harrison • Olympia  
943-5332  
If we don't have it, we will get it.  
POTTERY SUPPLIES  
Western Union  
ART BOOKS

THE SEVEN GABLES  
Cocktails • Dinner  
Sunday Champagne Brunch  
1205 West Bay Drive • Olympia  
Phone 352-2349 for Reservations

**Karb's**  
B.B.Q. & Soul Cuisine / Jazz City  
Welcome Back Evergreen!  
B.B.Q. CREOLE and other southern taste treats  
**OPEN FOR LUNCH**  
10am-2pm  
(starting Oct. 3)  
**DINNER**  
6pm-8:30pm Mon.-Wed.  
6pm-11pm Thurs.-Sat.  
JAZZ JAM THURS.  
FRIDAY NITE JAZZ  
VARIETY MUSIC SAT.  
203 W 4th Ave, Olympia • 784-9835

**Olympic OUTFITTERS**  
"Where Outdoor Adventures Begin"  
407 East Fourth Avenue, Downtown Olympia  
Bike/Water Sports Shop 943-1997 Ski/Mountain Shop 943-1114 Rentals 357-6758

**What We Carry**  
• The most complete selection of active sportswear in Olympia.  
• Alpine & Cross Country Skis  
• Camping Equipment  
• Bicycles (Road, Mt. & Children's)  
• Sailboards/Water Skis  
• Footwear

**What We Service**  
• Bicycle repair (all makes & types)  
• Skis (Mounting, tuning & repairs)  
• Water Skis

**What We Rent**  
• Alpine & Cross Country Skis  
• Snow shoes  
• Climbing equipment  
• Bicycles  
• Sailboards  
• Car racks

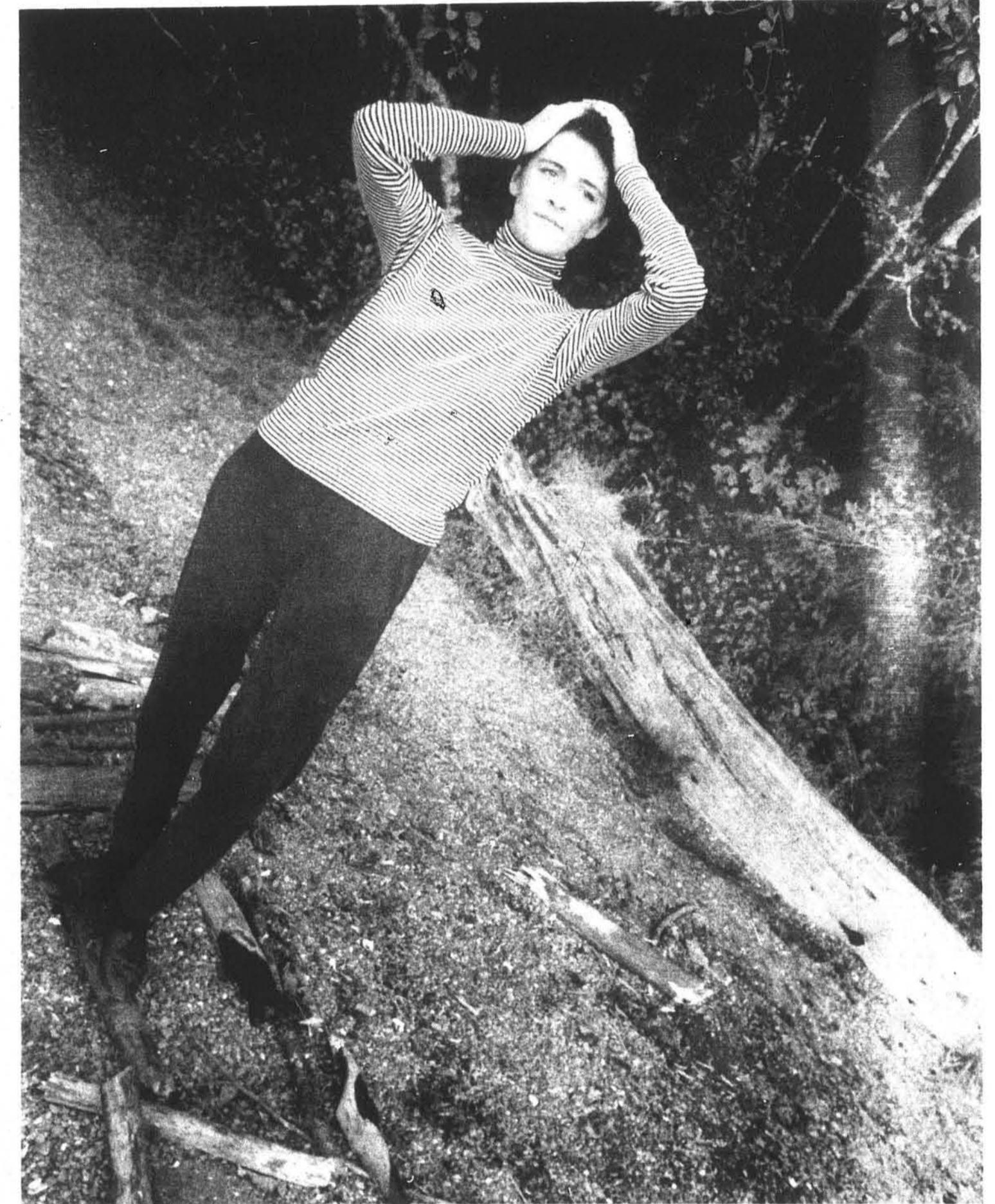
CHARGE IT  
MasterCard  
Discover  
American Express

STORE HOURS:  
M-F 10-8  
Sat. 10-6  
Sun. Noon-6



# Greeners enjoy the last few days of summer

Photos by Larry Cook





## FEATURE OF THE MONTH...

Here it is, this year's premier issue of *The Cooper Point Journal*. Appropriately, September is among other things "Be Kind to Editors and Writers Month." According to *Chase's Annual Events* this is a time for writers and editors to show one another uncharacteristic kindness.

"American Newspaper Week" falls during this month, and

began on the 25th, the anniversary of the publication of *Publick Occurrences Both Foreign and Domestick*, America's first newspaper at Boston in 1690. Sunday is editor's and publisher's day, Tuesday is dedicated to newspaper carriers, Wednesday gives thanks to the advertisers, Thursday is printer's day, Friday is dedicated to you

the reader and Saturday celebrates freedom of the press.

"Cable T.V. Month", Sept. 1 - 30, honors Ted Turner, H.B.O., Cinemax, E.S.P.N., The Playboy Channel and all of the artists, broadcasters and corporate magnates who make America's real favorite pass time what it is, whatever that is.

September is also a

special time for those who live with cats. It's "National Cat Health Month" when those with feline friends should assess the vigor and vitality of their kitties.

Finally September is a time to take note of the importance of timepieces in recognition of "National Clock Month." Thank you Switzerland.

## Where have the real Greeners gone?

Michelle Hofmann

A new freshman class has come to Evergreen. Already they know about questions such as, "So, where do you go to college?" and the mocking, "Oh! I've heard about that place," when the reply is "Evergreen". But the stereotypical Greener is dead—or at least that's what I've heard as an entering student.

And what was the Greener that has now faded? Once a Greener lived who was intense, intellectual, political, concerned, active, wholesome, unmaterialistic and well read. This Greener desires to make the community and thereby America better. The Evergreen campus was full of people fed up with the ordinary, uncaring and destructive American--students and faculty came together to influence one another and to then go into

the world and influence other people and produce change.

They were influenced by the fifties and sixties radicals, Kerouac, Ginsberg, Mailer; they were influenced by old style radicals like Thoreau and Emerson.

They invented things like the Organic Farm: a place where people could produce their own food, work the land. A place where people could feel connected to the earth and not just try to manipulate and destroy it. They were conscious of the trees they cut, of the aluminum and glass they recycled. They were conscious of themselves as human beings and watched closely the interaction they had with this planet.

Where have they gone? Are they gone? Is Allan Bloom's nightmare coming true even on the "different"

Evergreen campus? Do the new students have deformed souls? Are we filled only with egotistical desires? Do we only care about ourselves and not the overall welfare? Has the true "Greener" spirit died for good? Has the increased State funding and Dad's checkbook turned Evergreen into "just" another State

College--and what better, one with no grades?

Who are the 1988 Greeners? What are their characteristics? Maybe they are all balancing their checkbooks and seeing how much more beer they can buy to forget this whole Evergreen mess.



**TOURING TUBS & COMPANY**

**MAKE A SPLASH THIS SCHOOL YEAR!**

WE OFFER YOU  
**THE BEST RATES IN TOWN**

- MOBILE RENTAL HOT TUBS
- LICENSED AND SANITIZED
- GROUP DISCOUNTS AVAILABLE (WE DEAL)
- THINK OF THE POSSIBILITIES!

**786-0120**

4131 Black Lake Blvd. SW, Olympia, WA

## Getting 'Back to the Future'

Helping students acquire knowledge builds a strong foundation for a brighter future. Education is a benefit which The Evergreen State College employees bring to students every day. Washington State Employees Credit Union salutes your dedication and hard work.

WSECU is here to help you get on the road "back" to your future. Open the doors of opportunity professionally and personally with loans for advanced degrees, VISA for major purchases like books and computers, and auto loans for getting where you need to go. At WSECU we've got the Right Stuff for all your financial needs.



**WASHINGTON STATE  
EMPLOYEES CREDIT UNION**

400 East Union  
943-7911

800-562-0999



## A Greener guide to Olympia

Michelle Hofmann

The question is: what does a Greener need to know about the city of Olympia?

Well, first off, without a car a new student needs to know how to get downtown. That is accomplished by taking the bus—or "scenic bus route #41" as it is referred to in the survival packet given to new students. Bus #41 stops on campus in two places; the library loop and the dormitory loop. For schedules (if you lost the one in the survival packet) check the bookstore. (Custom bus, no Sunday service.)

Next, new students need to eat. If you are planning to fill a new campus kitchen there are three stores on the bus route.

**Peterson's Foodtown**—open 24 hours every day. It is located on the Westside Center Q. Foodtown is a large grocery store with a full magazine rack and a complete freezer section. It also has a good selection of whole bean coffees. (Cheap video rentals.)

**Bayview Market**—open 24 hours every day and is located on 516 West 4th Avenue. Bayview is a fun place to shop because of its immense selection, full bakery and deli. It also has fast checkout and they will help you to your car and even to the bus stop.

**Handy Pantry**—Open 7am-12pm every day. The Pantry is located on 2010 Division NW. It is a small store, much like a Jiffy Mart or A.M.P.M Mini Mart. It has high prices and little selection but it is very close to the campus and if one was truly desperate one could walk from the dorms or the mods.

Or, if you'd like to escape campus life for a while and see a movie there are four movie theaters in the area.

**The State Theater**  
The Capitol Theater Mondays only. The rest of the week is live theater.

**The Capitol Mall Cinemas**  
Lacey Cinemas

Maybe you're sick of SAGA and in the mood for a restaurant—there's one for every price range.

**Expensive:**  
Carnegies, Charlies, Ebb Tide Inn, Gardners, La Petite Maison, Rees, Seven Gables, Tugs, Bud's Bay, The Oyster House and the Imperial Palace.

**Moderate:**  
The New Shanghai Cafe, Asterisk, Bob's Big Burgers, Casa Mia, Chinatown, Cork 'n Crock, Crackers, Fuji Teriyaki, Natural Squeeze, Smithfield, Spar, Marianne's Deli and Boutique, Eagan's Drive-In, Jo Mama's, Mandarin House, Urban Onion, and Zacks (Inside the Fourth Ave Tavern).

## Harvest Fair Sunday

The Eighth Annual Harvest Fair happens this Sunday at the Organic Farm. The all day event features free workshops, contests, kids' activities, live music, crafts and more. Organic food, the only part of the Harvest Fair that costs money, will be sold by local farmers.

The Organic Farm was founded 17 years ago by students and interested community members. Students are responsible for maintaining the farm, along with a part-time farm

manager. Organic farm workers sell food on campus and rent community garden plots for those interested in growing food. Sue Sniado, a second year farm worker, says the fees are nominal. She says all profits from food sales and the Harvest Fair go back into supporting the farm.

The farm can be reached by taking the forest path behind LAB I or by Driftwood Road. For more information about Harvest Fair or the Organic Farm call extension 6160.

Psst Got a Hot News Tip?

LET US KNOW ABOUT IT AT THE CPJ.

WHO? \_\_\_\_\_ DATE \_\_\_\_\_

WHEN? \_\_\_\_\_

WHAT? \_\_\_\_\_

HOW CAN WE CONTACT YOU?

NAME \_\_\_\_\_

ADDRESS \_\_\_\_\_ PHONE \_\_\_\_\_

BRING THIS BY OUR OFFICE (CAB 306A)  
or MAIL DROP (CAB 305)


QUICK! QUICK! QUICK! THANKS! THANKS! THANKS!

*Sinjor*

100% cotton clothing & marvellous miscellanea  
our services include custom screen printing on t-shirts and accessories  
and graphic illustrations for business and advertising.

"downtown" across from state theater    203A 4th avenue    • 754-0808

**The Richard Thompson Band**



"Breathtaking..."  
Rolling Stone Magazine

"...one of rock guitar's true masters."  
Guitar Player

8 pm Saturday,  
October 8, 1988  
The Washington Center for  
the Performing Arts,  
Olympia, Washington

Also appearing:  
Tom Graf

Tickets: \$16, \$15, \$13

ARTIST & LECTURE SERIES  
South Puget Sound  
Community College

Presented by the Associated  
Student Body

For more information  
contact:  
754-7711, ext. 306  
or charge by phone at  
753-8586.

**THE CPJ OPEN MEETINGS  
NEEDS YOU! EVERY MONDAY  
6:30 PM**

**VILLAGE MART**

**WELCOME BACK  
TO THE  
NEIGHBORHOOD**

WE'VE GOT  
WHAT YOU NEED...

MONEY  
ORDERS 50¢

PARTY  
SUPPLIES

GROCERIES

GAS

MOVIES  
99¢

DELI  
yum!

3210 Cooper Pt Rd NW  
866-3999

ALL WAYS TRAVEL SERVICE, INC.

*Always*

943-8700  
Harrison and Division

*Jo Mama's*

*Howl About a Pizza!*



Use this ad for  
\$2.00 OFF  
any food  
purchase  
of \$10.00 or  
more.

Coupon good  
thru  
Oct. 31, 1988



# Poetry Page

When I think of the somewhat madness of college and all it entails these three pieces of literature come into my mind Hectic Days, Left Brain-Right Brain and A Thought these three pieces of prose reminded me of all of the mass hysteria I've experienced in college all the trying to meet the deadline, all the adjusting to new roommates, and most of all, all the friends.

**Left Brain-Right Brain**  
My eyes open, my body moves, my mind not quite engaged. My hands reach forward, almost instinctively, reaching for the computer keys. I print my paper. Breakfast on coffee. Pack my books. Head for the bathroom. I brush away my coffee breakfast with the dragon taste of sleep of the night. I sud away the last of the night drowsy veil, heat my body to the rhythm of the day. I paint to face the day, dress to represent my way. I check my watch, it's late, ok. Grab my books-out the door-feet to street-my mind still not quite with me-left brain, lets to make the bus before it turns-right brain, can't you do anything but run.


**HECTIC DAYS**  
Gosh, my days are hectic; I'm a college student you know, as the nature of college students go. Sometimes I wonder about the "real people." I wonder if their days are this hectic. Come on, you know the one, the "real people"; the ones on television who snack on Snickers on break and jog to McDonald for breakfast. The skinny ones who are all five-foot-nine-and-one-half-inch-tall. They are the "special ones" who work an "honest day" and want an "honest deal." I wonder how they'd feel literally running from math to english-to psychology and trying to cope with the feeling that neither of these persons acknowledge that the others exist. My psych. prof wants forty pages a day, my mind says ... no way, as my hand turns another is cool, he only wants eight problems a day, "oh please don't forget the combination formulas", he'd say. Then there's my english paper that's due on Monday, and there's another weekend out the window. Well, maybe those "real people" are ok, even if they do work-run-jog-eat, 'cause at least it keep'em on their feet. And to think of it, just like me.

**A Thought**  
I was sitting at my desk writing my english paper, which is due tomorrow, when this thought came to mind. Everybody wants to be special to somebody. I cannot reveal the fantasy which prompted this line of thought without self-incrimination. But it does seem true; everybody wants to be special to somebody. Take my roommate, she and I are not the ideal persons to be living together, and most times we can barely tolerate each other, but my birthday was coming up and she wanted to have a semi-surprise party because one day after we had not spoken to each other for about a week she came into my room and near about yelled that she as having a surprise party for me at 3:00 pm on Sunday

afternoon, and the reason she was telling me is because is she told me on Sunday to be back by 3:00 she knew I would be stubborn and not come back. Knowing she was right and considering this intrusive method of invading personal space, as well as the manner in which she relayed the message as all part of "her way", all I could do is laugh. Seeing that she'd broken the ice she immediately added, 'by the way, now that I've told you, could I have the phone number of a few of your friends?' The whole situation was almost overwhelming; I was laughing, she was laughing, I felt special to her, not because of the party but because of the trueness of heart.

**TIME AFTER TIME**  
Vintage Clothes  
13% off coupon  
412 S. Washington  
Olympia 786-9309

An alternative place for alternative minds



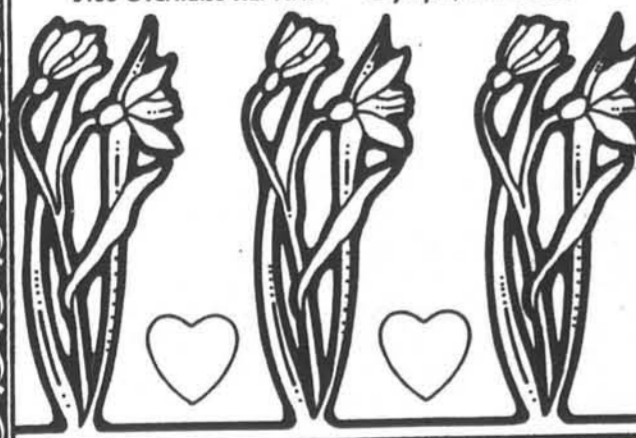
The Smithfield is now SMOKE FREE and SERVING BREAKFAST  
EGGS O YOGURT O FRUIT O GRANOLA

**Smithfield CAFE**  
OLYMPIA  
TWO TWELVE WEST FOURTH AVENUE

**COOPER'S GLEN** formerly ASH TREE APARTMENTS

1 & 2 bedroom apartments now available within walking distance of beautiful Puget Sound. Social, yet peaceful for the student of Evergreen State College.

3138 Overhulse Rd. N.W. Olympia, WA 98502



866-8181

**WELCOME GREENERS**

THE "MISERY & POVERTY OF THE STUDENT LIFE" WAS ONCE WELL PUBLISHED BY THE FRENCH SITUATIONISTS IN THE LATE 60'S PERIOD.

HELP COMBAT YOUR MISERY & POVERTY WITH GOOD FOOD FROM **OLYMPIA FOOD CO-OP**

MORE TIME THEN MONEY? ASK ABOUT HOW YOU CAN LOWER YOUR FOOD BILL BY VOLUNTEERING!

754-7666 921 N. Rogers (corner of Bowman & Rogers)  
OPEN 9am-8pm Daily ON THE BUSLINE IT NO. 45

EXPLORE THE **Olympia Food Co-op** (ASK ABOUT BECOMING A MEMBER)

USE THIS COUPON TO SHOP ONCE AT MEMBER PRICES

EXPIRES OCT. 31, 1988

# Trustees adopt Pet Policy

Because of many problems associated with loose dogs on campus, the Board of Trustees has adopted a Pet Policy that requires all dogs and other pets to:

1. Be on leash while on campus.
2. Not be in any buildings.
3. Not be tied to any object, in lieu of an owner holding the leash.

control of their owner or keeper. Exceptions are made for guide dogs accompanying sightless persons in persons and animals used for academic study and research. It is suggested that dogs and other pets not be brought onto campus if the owner or keeper is unable to keep them on leash or must enter a campus building. However, if an owner or keeper must for some reason bring a pet on campus and cannot attend the pet at all times, there are very limited kenneling facilities available for short stays. Pet owners should contact Campus Security in Seminar Building 2150 to make arrangements for kenneling

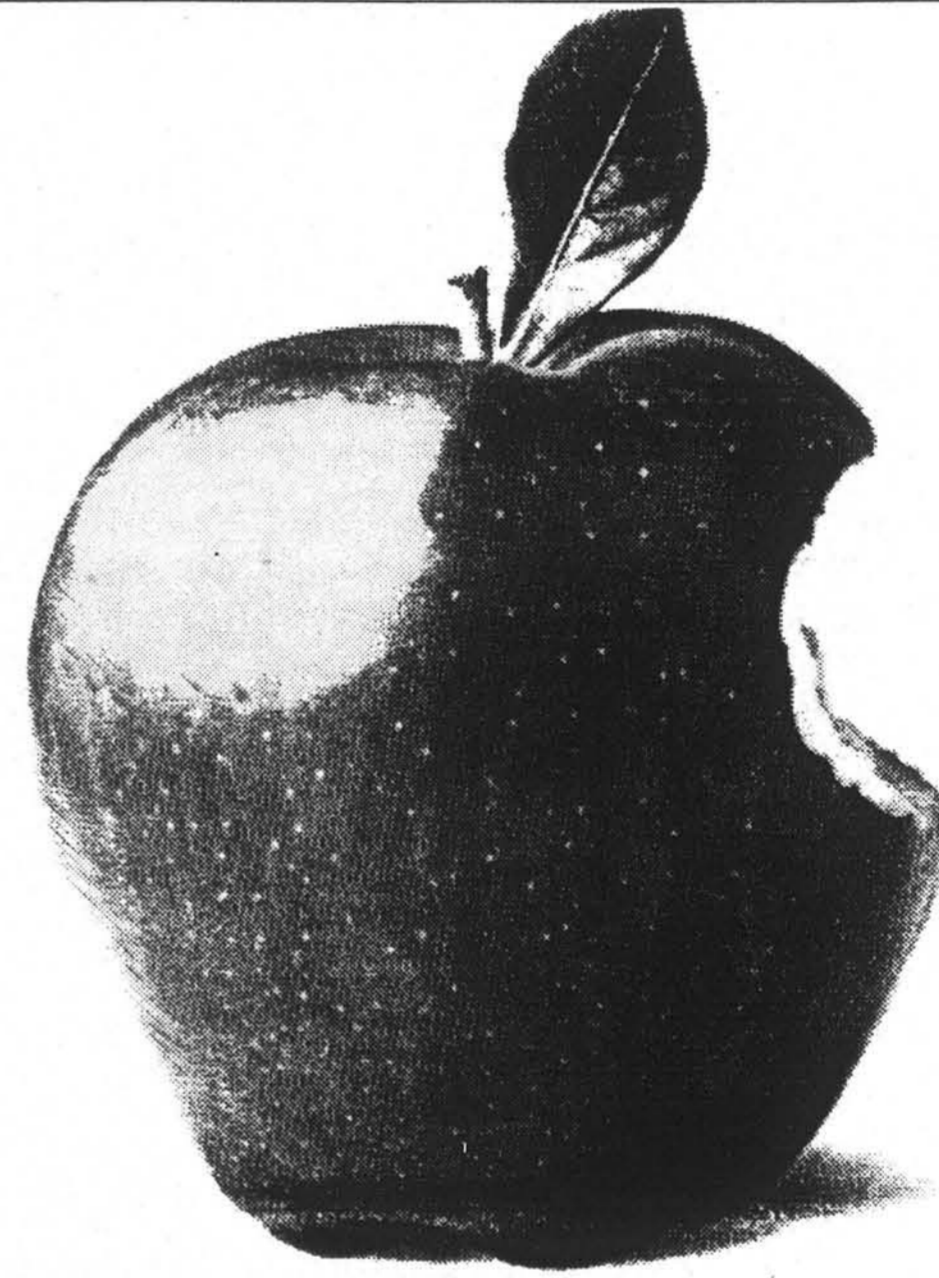
and to receive copies of the actual Pet Policy. Dogs and other pets running loose on campus are subject to impounding by the Campus Security Department and will be transferred to Thurston County Animal Control Shelter. Costs to retrieve a dog from the Animal Shelter are:

- Release from impound \$21.00
  - Licensing of unlicensed dog \$15.00
  - Daily retention fee \$5.00
- Your cooperation with this policy is appreciated.

**Put your papers to use**

It's a let-down when you get back that class paper you've spent all quarter on. It comes back from your instructor covered in red ink and a "good job." You don't want to throw it away, but you've certainly got enough junk sitting in your desk. But wait! There is a way to put all your hard work to good use; submit it to the CPJ.

We know there are interesting papers floating around Evergreen and don't like the idea of them being lost, so we'd like to publish them. If you've got a paper you just can't bear to let stagnate in your desk, submit it to the CPJ.



# Let Apple Take a Bite Out of Your Book Bill

Stop by TESC Bookstore between October 3rd and October 14th and register to be one of two \$100 winners or one of two \$50 winners. Drawings held October 7th and 14th at noon in the Bookstore. Winners need not be present to win. Only full time students eligible.



Support our Software

A N D

Keep the Hardware

## Co-Op Internship Information Session

What does an internship mean at Microsoft?  
For starters, after you finish your stay with us, you'll be taking home the Macintosh® or IBM computer you used here. And it can mean a lot more. Come to our Information Session and we will tell you all about it.  
Door prizes available.

Friday, October 7  
1:00 p.m.  
Location: Library Rm. 1406A

**Microsoft** Co-op  
We Give New Meaning to Support

## Calendar

**FRIDAY, SEPTEMBER 30**  
Citizens Band, a group who does acoustic music will perform at the Olympia Community Center beginning promptly at 8 pm. Admission is 3-5 dollars. For more information call Grace at 357-8323 or 754-7666.

A great variety of fun and exciting activities will be going down for free at the Rec. Center from 9:30 pm to 2:00 am. There will be wallyball, swimming, sauna, hot tub rafts, dancing and free popcorn and beverages. For more information call Kimberly Steward or Corey Meador at 866-6537.

**SATURDAY, OCTOBER 1**  
The International Socialist Organization presents Socialism from Below: Is a Genuine Workers' Democracy Possible? a talk by Thom Quine located at Gould Hall in room 435 at 7:30 pm.

**SUNDAY, OCTOBER 2**  
Evergreen's 8th annual Harvest Fair is a celebration of fall where fun can be had by people of all ages. A variety of activities, including free workshops, folk music, and children's activities will fill the day. It's held at the Organic Farm from 11 am to 6 pm. For more information call 866-6160 (am preferably).

**MONDAY, OCTOBER 3**  
Safeplace, Thurston County Rape Relief and Women's Shelter Services has a need for volunteers in many capacities and therefore will begin their Fall Volunteer Training. For an application call 786-8754.

**TUESDAY, OCTOBER 4**  
Children ages four and five are invited to the Tumwater Timberland Library's Preschool Storytime which is held every Tuesday from now through November 1 at 10:30 am to 11:15. For more information call 943-7790.

**WEDNESDAY, OCTOBER 5**  
How to Read a Book and Prepare for Seminar is one workshop in the Geoduck Training Workshops for Academic Survival series KEY Student Services is sponsoring which are open to all students and continue through November 30. All workshops will be Wednesdays from 3 to 4:30 in L-1612. For more information call 866-6464.

The Piece of My Mind series begins with a talk by Jens Lund on "What's 100 Years of Washington's Folk Culture Worth?" All talks in this series will be in room B of the Olympia Center and will be the first Wednesday of each month from 12:10 pm to 12:50. For more information call 866-6128.

Liberties of Liberty, an exhibit of photographic posters celebrating the Statue of Liberty Centennial will be on display until October 28 at South Puget Sound Community College. For more information call 754-7711.

**THURSDAY, OCTOBER 6**  
Utah Phillips, a folk singer and storyteller, and Ramblin' Jack Elliot, a country singer, will perform at TESC's recital hall at 8 pm. Tickets are \$10 general admission, and \$7.50 for students, seniors, and Radio KAOS subscribers. Tickets can be purchased at TESC, and at Positively 4th Street. For more information, or to get reservations, call 866-6833.

The presentation of Madam Butterfly at 8 pm will mark the beginning of the 1988-89 Artist's Series, which includes music, theater, and dance. The series is made up of 5 performances held at the Washington Center for the Performing Arts. Series tickets are available, with discounts for students, seniors, and groups. For more information contact Bob Stewart at 753-8585.

**ONGOING**  
Deborah Stafford's New Watercolors are being presented by Marianne Parlow Gallery now through October 3. Gallery hours are Tuesday through Friday 10:30-am, and Saturday 11-4. For more information contact Louise Williams or Marianne Parlow at 943-0055.

The Oregon Shakespeare Festival is now in its fall season, and evening performances in the Elizabethan, Black Swan and Angus Bowner Theaters will begin at 8:00 pm. Late arrivers will not be let in until there is a suitable break. Tickets for both the outdoor season (continuing until October 2) and the indoor season (until October 30) are still available. For more information or ticket reservations call (503) 482-4331.

Leisure Education courses are again being offered by the recreation center in great variety. There are offerings in music, writing, dance, and various other areas. Registration for most courses is until October 7. For more information and registration contact the Recreation Center ext. 6530.

A diabetes support group for people of all ages will be meeting the first Tuesday of each month at 7 pm in the Diabetes Care Center at St. Peter Hospital. For more information call St. Peter Hospital.

information call St. Peter Hospital, Extension 7567.

The Allegro Dance Festival begins its '88-'89 season of eleven concerts with Georgia Ragsdale's new work, Boxiana: The Women's Flyweight Championship of The World, which will be playing now through October 2nd. All performances will be at the Broadway Performance Hall, and will begin at 8 pm. For more information call 32-DANCE. Subscription Plans are available for savings.

The Northwest Folklife Festival has now made available the Folklife Catalog through which the work of Traditional American artisans can be purchased year round. For a free copy call or write to the festival office: Northwest Folklife Festival, 305 Harrison St., Seattle, WA 98109 (206) 684-7300.

Olympic Parks and Recreation Department is offering youth programs and workshops this fall, in which openings are still available. Call 754-8380 for more information and registration.

Olympic Parks and Recreation Department Adult Men's Basketball League is holding registration from now until October 14. The league begins the first week of November. For more information call 753-8380.

Persons interested in forming the Fighting Geoduck Rhythm and Blues Revue (Combat Clams?) to include drummer, sax, trumpet, guitar, keyboard, background singers and front person/singer are urged to call Craig at 866-9574, evenings during the week of 9-26 to 10-3. You don't have to be great but the old "willing to learn" within a musical community is essential. Rhythm and blues music is a team effort where the whole is most definitely greater than the sum of it's parts.

Afterschool Storytime: Nothing to do afterschool? Come to the Olympia Timberland Library. Cayt the librarian will read books of adventure, humor, and suspense to fire up your imagination. For kids ages 6 through 10, 4:15 - 5 pm., weekdays until October 7. No registration required. For more information call the Olympia library, 352-0595.

The Olympia Timberline Library will hold a preschool storytime for children ages 3-6. These popular half-hour programs feature picture books,

stories, fingerplays, and activities that are carefully selected by the youth services staff. Preschool storytimes will be held from 10:30 to 11 am., Thursdays, October 20 through November 17; and Monday afternoons, 1:15 to 1:45 pm., October 24 through November 28 at the Olympia library. Parents are welcome but are not required to attend with their children. For more information, call the library at 352-0595.

Pajama Storytime, an evening's entertainment for children ages 4-7 at the Olympia Timberline Library, 7-7:30 pm., Wednesdays until October 27. For more information, call the Olympic library, 352-0595.

It's Trivial Pursuit time at the Olympic Timberland Library. Young people ages 12 to 18 are invited to participate in the game by teaming up with friends or allowing the library to assign teams. This Saturday excitement will begin at 2:30 pm, October 15 at the Olympia library. Pre-register starting October 1 at the library's youth services desk or by calling the library, 352-0595, ext. 17.

### CLASSIFIED ADS

**CLASSIFIED RATES**  
• 30 words or less-\$3.00  
• 10 cents for each additional word  
• Pre-payment requested  
• Classified deadline-2pm Tuesday  
TO PLACE AD  
PHONE 866-6000 x6054 or  
STOP BY CPJ, CAB 306A

### HELP WANTED

**JOBS**  
FEDERAL, STATE AND CIVIL SERVICE  
JOBS. NOW HIRING. YOUR AREA.  
\$13,550 TO \$59,480. IMMEDIATE  
OPENINGS. CALL 1-(315)733-6062  
EXT. F 2110-A.

**CRUISE SHIPS**  
Now Hiring Men and Women. Summer  
& Career Opportunities (Will Train).  
Excellent Pay. Plus World Travel. Hawaii,  
Bahamas, Caribbean, Etc.  
**CALL NOW!**  
(206)736-7000 EXT. 1022C.

**COMPUTERS**  
WANTED Ambitious, Entrepreneurial  
person to act as campus representative  
for Zenith Data Systems. Earn a  
computer for college. Please contact:  
Mike Kiel at (206)453-5388.

**JOBS IN AUSTRALIA**  
Immediate Openings for Men & Women.  
\$11,000 to \$60,000. Construction,  
Manufacturing, Secretarial Work, Nurses,  
Engineering, Sales. Hundreds of Jobs  
Listed. **CALL NOW!**  
(206)736-7000 EXT. 1022A.

### HOUSING

Lesbian, 30; friendly female dog and one  
sweet cat looking for house to rent alone  
or with one other Lesbian. In EcoAg pro-  
gram. Call 866-6000 ext. 6544; leave  
message for Micha.

GAY MALE, 29, non-smoker needs  
housing. ASAPI Allergic to cats. Prefer  
serious student who's not homophobic  
and is responsible. Limited income. Call  
Tom at (206)747-2076 or leave message  
with LGRC.

### PERSONAL

**Lonely? Need a Date?**  
Write Dateline  
2318 2nd Ave. Suite 817  
Seattle, WA 98121