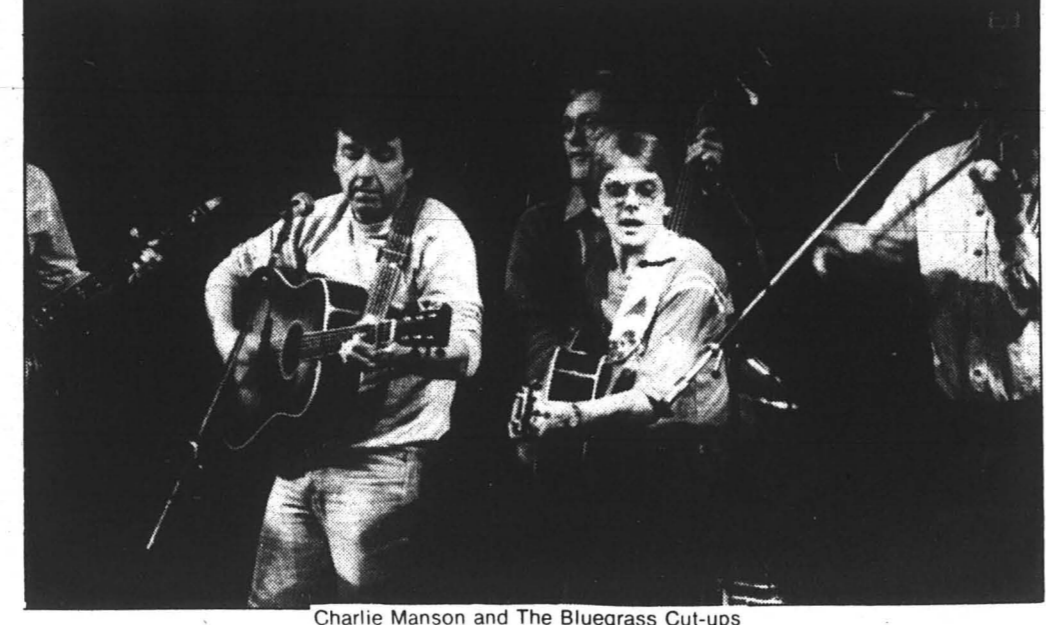


# KAOS Holds a Bluegrass Bash



Scatter Creek from Olympia



Charlie Manson and The Bluegrass Cut-ups

By J.W. Nielsen

The history of America unfolds through the music of Bluegrass. It is a reminder of the struggles and events that helped shape this country. It is the mountain music of our ancestors passed down through the generations.

The first Annual KAOS-FM Bluegrass Festival held Saturday February 6 attracted 350 people. At least half of this group was from the Olympia community while others traveled from as far away as Yakima, Vancouver, and Gig Harbor.

The festival started at 10 a.m. with events continuing throughout the day. There was an open mike on the main stage that was set up in the library lobby while elsewhere workshops in instrument repair, dog dancing, fiddle and banjo playing went on. The third floor of the lobby was the scene of local art and craft displays featuring handmade instruments, weaving, and ceramics. There were food concessions from the Columbus and Blue Heron bakeries, TESC's Organic Farm, a

well as a Bluegrass Beer Garden on the fourth floor.

During the afternoon there were more workshops in square dancing, songwriting, and music recording. A Bluegrass Scramble (musicians names are put into a hat and then drawn out to form bands) and a flat-pick guitar competition were underway. The usually quiet halls of the library building were filled with the sounds of musicians jamming with new-found friends. Little children, and some not so little children, were running around with painted faces. Everywhere people were enjoying themselves.

At 8:30, Master of Ceremonies, stage manager, chief cheerleader, and all around good guy, Chris Lunn, took the main stage and started the evening concert rolling with some real fine guitar cello vocal numbers. He paved the way for the four flat-pick guitar competition finalists who amazed the audience with their skills. It must have been a tough decision for the judges, but there could

be just one winner and John LaCrosse, from Tacoma, walked away with the \$50 first prize.

After a short break, Scatter Creek, a band from Olympia performed a rare set of songs, amongst them such oldies as *Love Come Home* and *Way Down Town*. Next to take the stage was the Bluegrass Scramble winners Charlie Manson and The Bluegrass Cut-ups. They performed very well together and were called back for an encore by the audience.

It was getting on in the evening when the main act, South Fork from Bellingham, took the stage. This five-piece band appeared to be well seasoned. The lead vocalist, Cliff Perry was also a bit of a comedian. A few times during their blistering set he asked the crowd if anyone knew the Sonics score. They handled themselves nicely as people, tired from the long day's events, filtered out. It was unfortunate that they didn't play earlier in the evening when more people were

present, but they put on a wonderful show just the same. Around midnight, the concert wrapped up bringing to a close 14 hours of non-stop fun.

Festival Coordinator, Michael Huntsberger said afterwards that seeing as how it was the first year for the festival, KAOS hoped to attract enough people to break even.

The fact is KAOS did better than they had expected. They were able to raise \$500 over their expenses which will benefit KAOS's station budget.

They also attracted a lot of people who had never been to TESC before. Huntsberger felt that these people left impressed with the college and what they had seen. Because of the festival's good reception Huntsberger said to expect a second Annual KAOS Bluegrass Festival next year.

Bluegrass is railroad music, it is farming music, it is loggers' music. It is for people living and relating to the land.



Left to Right: Rick Ryan and John LaCrosse, winner of flat pick contest



South Fork from Bellingham Photos: John Nielsen

EGGS & OMELETTES		Real Food	
Garden Omelette	3.50	Cheddar Melt	2.95
green peppers, onions		Reuben	3.25
mushrooms, cream cheese		Fresh Spinach Salad	3.50
Piranhas' Omelette	3.75	Tuna Salad	3.75
sausage, feta cheese,		Fish & Chips	3.25
black olives		Fettuccine Al Pesto	3.25
Huevos Rancheros	2.95	garlic bread	
with home fries		Fish Sandwich	2.95
Cheese Burger Deluxe w/fries	3.15	french fries	
Blue Cheese Burger w/fries	3.75	Lasagne (meatless)	3.25
Bacon & Cheese Burger w/fries	3.75	garlic bread	
Ham & Cheese Burger w/fries	3.75	Sauteed Vegetables	3.25
Sourdough Burger w/fries	3.15	garlic bread, brown rice	
Patty Melt w/fries	2.75	Filet of Fresh Red Snapper	3.75
		grilled, french fries	

**Piranhas'**  
406 E. 4th Ave. 786-9769  
(Across from Union Station)

M-Th 10 a.m. to 8 p.m.  
Fri 10 to 10  
Sat 10 to 6  
Closed Sundays

THE 3<sup>RD</sup> EVERGREEN ALBUM PROJECT IS NOW ON PRESALE - IN THE CAB LOBBY FROM 12 TO 1 PM WEEKDAYS BUY NOW... .. AND SAVE ONE DOLLAR - OFF OF THE RETAIL PRICE.

The Evergreen State College  
Olympia, WA 98505

Volume 10, Number 15  
February 18, 1982

# COOPER POINT Journal

## U.S. Policies on South Africa Blasted

By J.W. Nielsen

A strong attack against the apartheid policies of South Africa was delivered by the chief representative to the United Nations from the Pan Africanist Congress of Azania, Henry Isaacs, on Friday, February 12 in Lecture Hall Five. He said that South Africa's defenders in the United States, multinational corporations, are "supporting the enemy in wartime."

The Pan Africanist Congress is a banned organization in South Africa, but is recognized as the voice of South Africa's 20 million blacks, by the U.N.

Having just recently returned from Africa, Isaacs has witnessed first-hand the human rights atrocities that are an integral part of South Africa's domestic policies.

He criticized the fact that when marshal law was imposed in Poland, 205 trade union leaders were detained in South Africa by that country's secret police. There were no Western or U.S. diplomatic protests delivered to the South African government at Pretoria as had been delivered to Moscow and Warsaw for their acts.

Isaacs said that in the past, the U.S. has imposed economic sanctions against Cuba, Iran, and Poland, but not South Africa, because the U.S. has said that to do so would hurt the black population of South Africa. Yet the U.S. sanctions against Poland actually hurt the people of

Poland more than they hurt the government there. He said he believed that "hypocrisy is not something that bothers the drafters of foreign policy in the United States."

Isaacs said that about 350 American corporations have business interests totaling more than \$2 billion invested in South Africa. He said that economic sanctions have not been imposed by the West because they would hurt those companies.

Isaacs said that blacks are treated as second-class citizens, even though they are a majority of the population, and are often tortured and killed while in the hands of the secret police. There is a law in South Africa, The Terrorism Act, which specifies an indefinite jail term with no trial for anyone suspected of anti-government activity.

Just this past week, the first white supporting civil rights reforms for blacks in South Africa was killed while in custody of the secret police.

Isaacs pointed out that the current white leadership of South Africa, who were members of Osawagon Sentinel, a secret Nazi group, were imprisoned themselves after failing to cooperate with the Allies during WWII.

Isaacs asked Americans of all races to support the struggle of his people. He asked for material support as well as a pressure on U.S. corporations to withdraw

their investments from South Africa. He also asked for a boycott of records and movies made by U.S. entertainers who have been flocking to South Africa, not to help the struggle, but to entertain the white rulers.

Isaacs defended the use of violence in South Africa, calling it a form of "revolutionary morality." Isaacs said his people will win in the end. "We have adopted the armed struggle not because we hate whites, but because we love humanity."



Photo by John Nielsen

## Capital Mall Nixes Film Project

By Pat O'Hare

Evergreen student Mark Smith has been prohibited from filming part of a documentary at Capital Mall. This action has been taken by Capital Mall management in response to what they claim was a misrepresentation on the part of Smith. Smith claims that the mall is overreacting to a

misunderstanding that took place between the two parties when he presented his project proposal.

Smith is doing the documentary as part of an individual contract under the sponsorship of faculty member Lucy Turner.

In his project description, Smith states that he wants to make an objective study of malls, primarily through interviews with

shopping mall merchants. He states that the ideas presented in the documentary will reflect those ideas expressed by interviewees, not his own.

Turner said that Smith called marketing manager Dorothy Bundy at the beginning of winter quarter to secure permission for the project. Smith said that the call took place at 8 p.m. and that both he and Bundy probably were not at a receptive and communicative peak. Accounts differ as to the exact nature of that phone call and the developments which followed it.

Smith claims he informed Bundy that he was filming the documentary as part of an individual contract and that it was to be individually financed (he is paying for the project). He claims he was told that he could meet with the management sometime in February. He said that, following the phone conversation, he asked 16 merchants in the mall whether or not they would object to the documentary. He claims that he has 14 written approvals.

Bundy would not comment on the issue; but Evergreen Registrar Walker Allen, who met with Bundy and the manager, Stan McWhorter, said he got a different account of the events. He said Bundy claims that Smith called her about the project and told her he was not affili-

ated with Evergreen. He said that misunderstanding might have occurred over his usage of the term "individual contract."

Bundy told him that Smith then approached individual merchants and some complained to the management. He said that during this interaction of merchants and management, Bundy learned of Smith's connection with the college and, hence, came to the realization that Smith had misrepresented himself.

Walker Allen was contacted by Bundy who told him that she had called the police and Smith should not try to film the mall. Turner, Smith's sponsor, spoke with Bundy about the matter. Turner said that the response was not necessary, considering the circumstances.

Turner claims that Bundy, who is President of the Mall Marketing Managers Association, told her that Smith would not be allowed to film in any mall in the Northwest. Smith called Tacoma Mall to seek permission to film there. He was denied permission, and claims the management asked him if he had tried Capital Mall.

Continued on page 7

## Evans Speaks Out Against Tuition Hike

By John Bauman

The Evergreen State College has increased substantially since 1975.

Sen. Guess said that the difference between the costs at Evergreen and the regional universities was increasing. He said that between the 1975-77 and 1977-79 bienniums the average cost at Evergreen rose 22 percent while at the regional universities the average cost rose only 17 percent.

"We should not expect students in one part of the state to subsidize students in another part," Sen. Guess said.

Evergreen President Dan Evans told the committee that it was not rising costs but declining enrollment that caused the cost-per-student to rise at that time. He said that if the legislature would provide the funding so Evergreen could continue to grow then the cost-per-student would come down.

"We've had three years of strong enrollment growth at Evergreen. We're now at a record level. We could readily meet

higher enrollment targets," he said, if the funding were available.

But, Evans added, with the state cutting Evergreen's budget, enrollment may have to be cut. This would make bringing the per-student-cost down impossible.

Sen. Patterson (R-Pullman) mentioned that he'd seen television ads for Evergreen recently and asked how many applicants the school had had to turn away because of funding limitations.

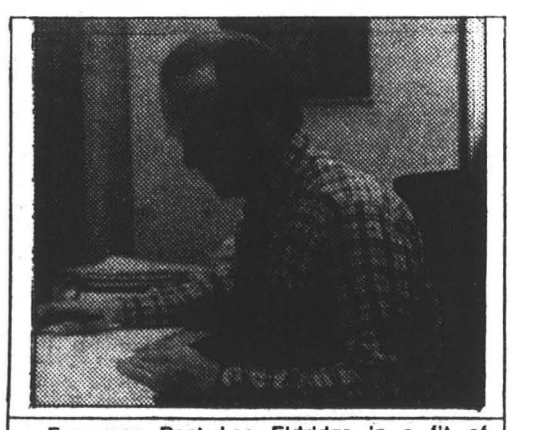
Evans talked about graduate and off-campus programs that won't be started and about the teacher certification program that can accept only half its applicants.

Sen. Patterson asked his question several times but he never worded it exactly right so Evans never had to tell him that Evergreen is still accepting all undergraduate applicants who meet the requirements.

Les Eldridge's testimony was brief and poetic, in fact it was a poem, dedicated

to Sen. Goltz in honor of his Evergreen limericks:

'Twas on the shores that round our coast  
From Blaine to Bellingham Bay  
That there dwelled a Solon hear to boast  
"We should make the Geoducks pay!  
"As the I.Q. of King clams is high,  
So should their tuition be,  
"Why, they'll clamor to shell out  
and show the world: clam superiority."



Evergreen poet Les Eldridge in a fit of creative inspiration, composes yet another limerick.

Continued on page 7



# Geoduck Skiers Wade Through Meet

By Benjamin Schroeter

Heavy rains and rivers of slush hampered the efforts of the Evergreen Ski Team (EST) last weekend at the University of Washington Invitational at Snoqualmie Pass.

The heavy rains, accompanied by strong gusts of wind and temperatures in the upper 30's created a miserable race of the year for the Geoducks, who got soaked to the bone (shell) before the race even got started.

Three EST Volkswagens and the Reed College van hauled 14 ambitious racers from the two schools to Snoqualmie Pass in a caravan Friday night.

It was snowing hard when the racers arrived at the pass, as they drove through deep snow to the cabin where they were to stay for the weekend. When they woke on Saturday morning, it was raining, and the once snowy road had turned to deep slush, hopelessly entrapping the two EST bugs.

The fairweather racers from Reed opted not to race in the rain and withdrew from Saturday's slalom. Three of the six EST members also decided not to race.



Reed gave the EST members a ride to the slopes in their van, which has fairly good clearance compared to the EST bugs which were totally high-centered in the slush.

While Evergreen's John Ensnick, Terry Sacks and Pete Guenther were racing, Eric

Smith (who was back at the cabin) had developed an infected leg from a three-week-old wound, so Bill "The Beaver" Cleaver heroically dug his bug out of the slush and took Smith to the University Hospital emergency room in Seattle, where Smith was treated and released.

"The Beaver" had no intentions of racing in the rain anyway.

"This is the worst skiing in Washington I've ever seen. I don't want to pay seven and a half bucks to stand in the rain all day, make two runs and get sick," "The Beaver" said.

Pete Guenther was the only team member to finish the slalom, taking 18th place out of 40 entrants. Both Ensnick and Sacks missed gates.

After the race, cold and soggy team members waded back to the cabin through a knee-deep river of water, slush and ice that had been a road the night

before. Luckily a kind man in a large 4X4 happened upon the scene and managed to tow the last marooned bug from the ravaged road.

That night after hearing weather forecasts of more heavy rain on Sunday, the Reed College team and two EST members decided to head for home and get some studying in, leaving just Guenther to represent Evergreen in the Sunday giant slalom (GS).

Team member David Henderson unexpectedly showed up on Sunday though, and accompanied Guenther for the soggy GS. Guenther took 18th again, but Henderson missed a gate and was disqualified. The GS was originally scheduled to be a two-run race, but after an emergency coaches meeting it was changed to a one-run race because of the bad weather.

Guenther didn't have much to say about the race except, "I'm wet and I'm cold and I want to go home."

Evergreen did not participate in the Monday cross-country race as the rains continued to fall.

One happy note though on a miserable weekend was that Gina Harrington ended up tied for first place in the combined at the Oregon race two weeks ago, according to Lewis and Clark coach Andy Krakauer.

Results immediately after the Oregon race showed Harrington beating out Liz Davis of Pacific Lutheran University by two points in the combined. Harrington was awarded the trophy and she drove home. Recalculations later that evening turned up a mistake and Davis was declared the winner by one point.

A third and final calculation of the times showed that Harrington and Davis were tied for first so both will qualify for the Regional Championships next week at Snoqualmie and Davis will receive a duplicate trophy.

# Jewish Students Form Group

By Benjamin Schroeter

Interests and concerns with Judaism, the situation in Israel and the Middle East is the focus of a new student group, started this quarter.

The group was started by Sheri Gerson after she spent some time in Israel and returned here to Evergreen. Although Gerson started the group, it is a cooperative effort, according to Leora Sapir who helps put a lot of energy into the organization of the group.

There is a big need to connect with other Jews on campus and discuss issues such as Judaism and anti-semitism," Gerson said.

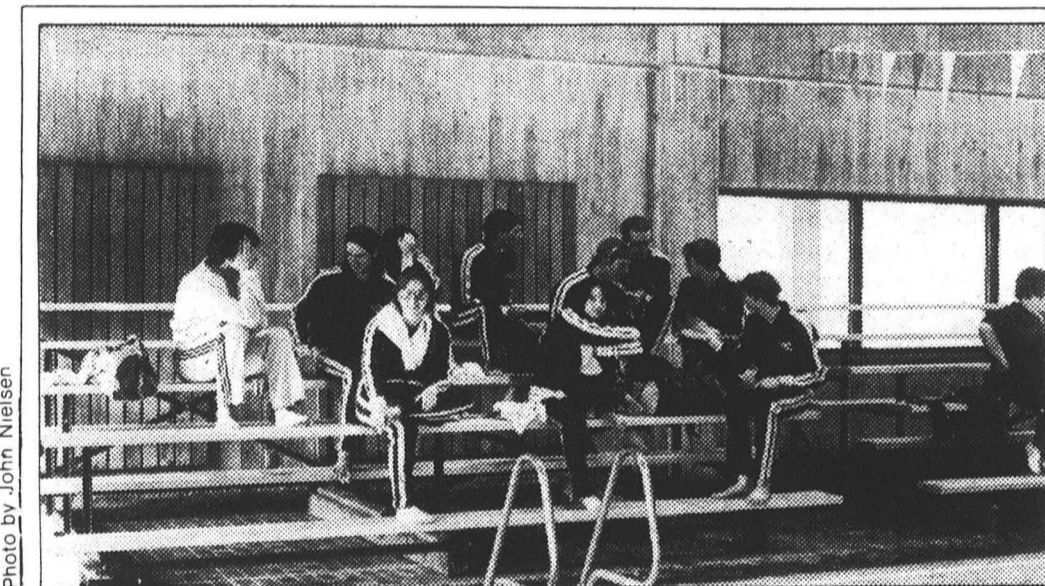
It is a more diffuse social community here at Evergreen, so the group meets on Friday evenings for Shabbat potlucks and

discusses various issues such as identity and what it means to be Jewish, said another member, Avaan Rips.

The group is also planning on showing films that they would receive through Jewish agencies in Seattle, and has shown interest in working with EPIC to make more films and other political information available to the students.

The group has not as yet decided on a name and has no major course of action other than to show films and have weekly meetings and discussion.

This Friday evening the group is happy to welcome Seattle attorney and noted Jewish author Leonard Schroeter, to lead their discussion and field questions. The meeting will start at 7 p.m., at 228 North Looote St., and everyone is welcome whether you're Jewish or not.



Despite their enthusiasm, the Geoduck swimmers were thwarted in their attempts to beat out Whitman College, last weekend. Several Geoducks once again beat their own best times, and a third swimmer, Austin St. John, has qualified for the Nationals, despite the loss. St. John, Marybeth Berney and Evetree Tallman, will all be attending the Nationals in the next few weeks. The scores were: Men's—80-38, Women's—80-37.

ing tickets when the film is starting. It's a matter of logistics! Maybe he'll find someone to take tickets for him during those minutes so we can be informed before the film again.

If you can't make it to Friday Nite Films, or if you are a true addict, there's always the Medieval Etc. Series on Tuesday nights. Alisoun Lamb, the coordinator, came up with the idea for Medieval Etc. last year and got S&A funding to put it on. She shows Medieval Films and related films that her survey says people want to see. She says she's not only interested in "artsy films."

Lamb explained that she has been into the Authurian legend since she was eight or nine, "and ever since I've been stuck in the Middle Ages." Funny, she doesn't look a day over 25. She's a member of The Society for Creative Anachronism, a non-profit, educational organization dedicated to the more attractive aspects of the Middle Ages. In other words, they don't re-enact famines and plagues, just duels and celebrations. Lamb is a seneshal, which means she's in charge of a local shire: Olympia.

Lamb says she is willing to help out programs or organizations with her proceeds. This week when she shows *Tale of Two Cities*, all the proceeds will go to the French program that will be going to France this spring. She's also planning to put on a medieval fair May 8 and 9, look for the posters.

Lamb says one of the most important films she'll be showing is *A Celtic Trilogy* on March 2. She said, "It's an interesting

way to find out about your roots..." If you're Irish, I guess. It's a film of Celtic tales from Wales and past in Brittany, Ireland and Wales.

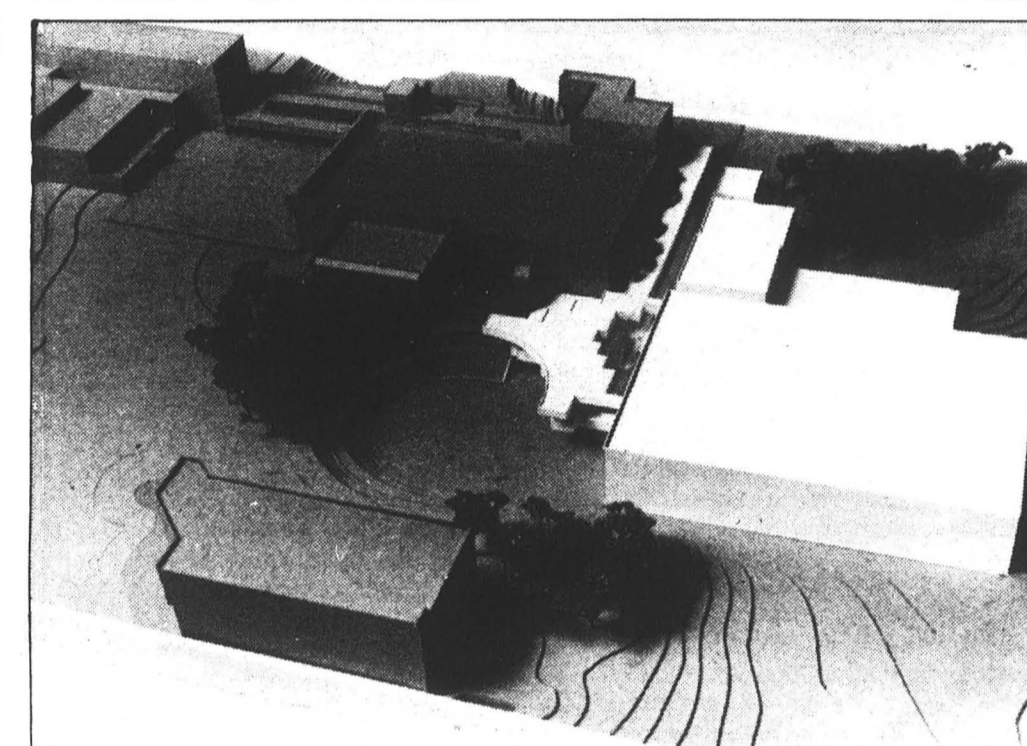
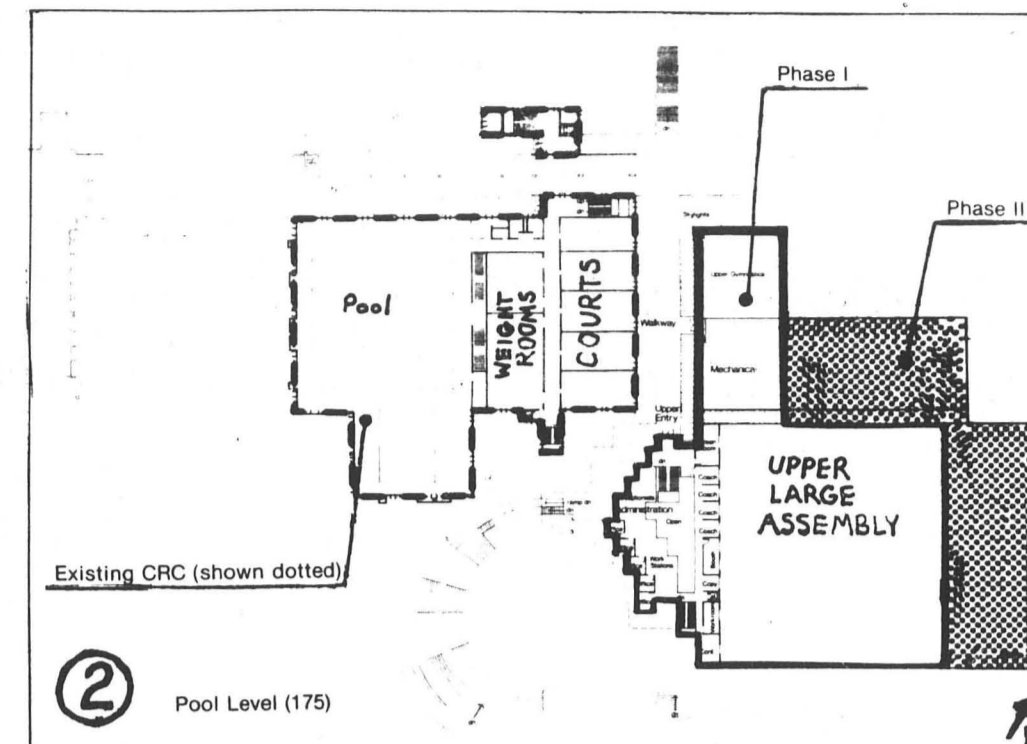
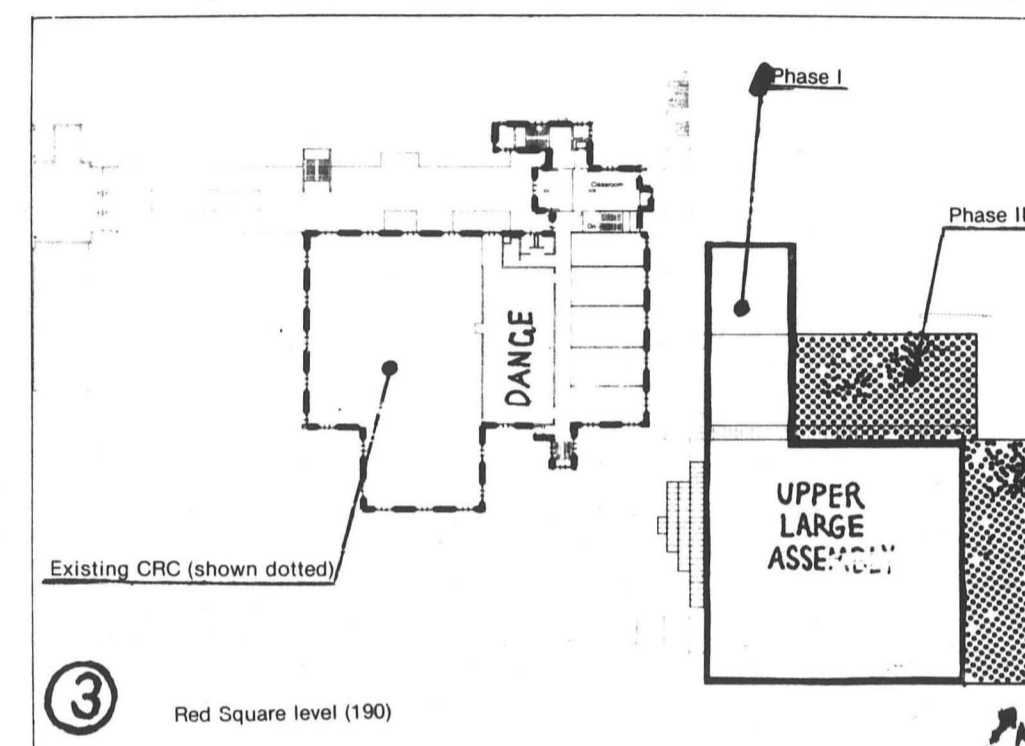
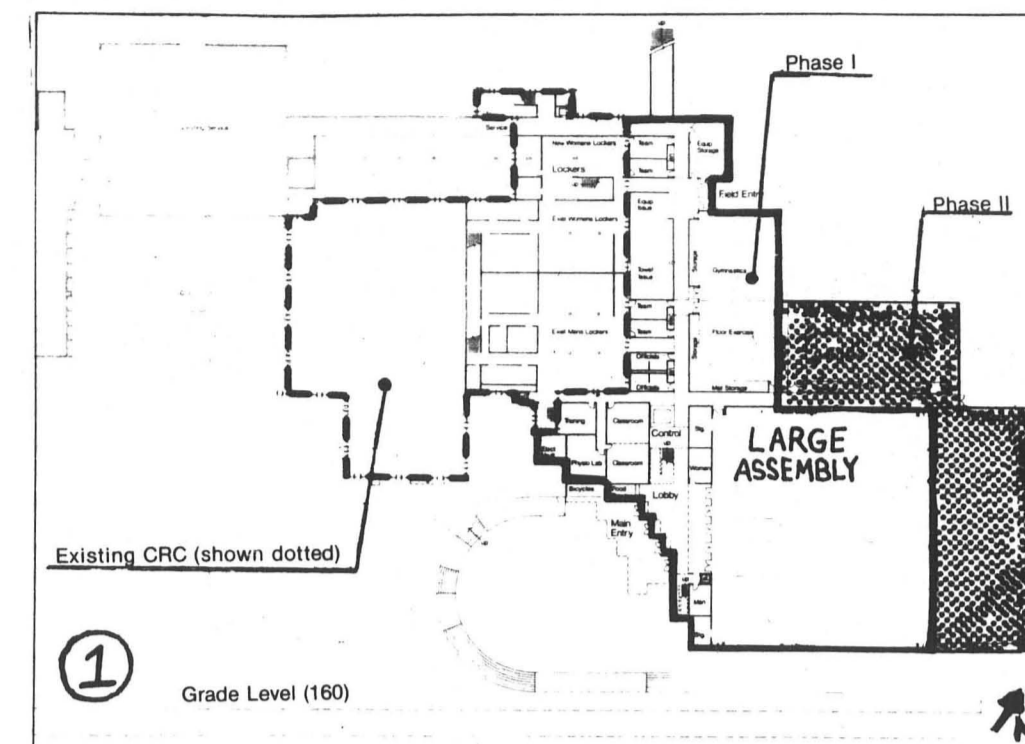
Speaking of entertainment, I was pretty shocked when I walked into Popeye's last Saturday night and saw gold table cloths on the tables and a pretty classy set sitting cross-legged around them. Ernestine Anderson and a tight jazz band played.

The evening was like going on the Merv Griffin show, i.e. classy for Olympia. There was this MC who came on a few times to introduce the band and Ernie. He mentioned something about people trying to form a group that will hold similar events there monthly. Members would get in cheaper. Sounds like a good idea. Popeye's should be used for something that people really are interested in going to see.

One last word. Don't forget that this weekend is The Beaux Arts Ball, another Sue Patenude and Company production. So, pull out your Roaring Twenties image and dance to Holly and the Harmonics. There'll be a Charleston contest and more. Look for the poster with the old-fashioned car. If you want to help decorate, come to CAB 305 Thursday night for a set painting party.

Ta-ta for now.

# Plans for the New Gymnasium



Responding to a long-time facility need at Evergreen, the legislature appropriated funding in July 1981 to pay design fees for the preparation of schematics, preliminary and contract documents for this project. Since that time, the joint venture firm of CSA/LMN of Kirkland and Seattle, respectively, has been selected through the state's selection process and a contract was awarded in early September for their design services.

A building committee with faculty, staff and student representation prepared an architectural program for the building, with suggestions from the directors of groups on campus that represent key users. A consultant who specializes in planning and funding facilities for athletics, physical education and recreation was hired by the architects to assist in the programming process and participated in the program meetings.

TESC is proceeding with a project design that is comparable in size to the 1981-83 capital budget request with design fees that are within the dollars appropriated. Final schematic design drawing and a model were completed on December 4, 1981, and the design development stage of the work began this month. However, in order to meet the program needs developed by the building committee, the college hopes that the legislature will approve the larger project that was submitted in the 1982 capital budget request.

The proposed project is 40,782 square feet. It will provide a two-bay gym, two multi-purpose rooms, athletic offices, storage, etc. The existing men's and women's locker rooms will be equalized. If the legislature funds the project submitted in the 1982 capital budget request, a third bay of the gym and two additional multi-purpose rooms equaling 13,523 s.f. will be added.

# Spurtz With Gevirtz Film Flam Thank You Ma'am

By Gabby Gevirtz

Well you've got your apple and your tomato and your grape. And of course you've got your orange. I suppose around here there's more papaya than usual. Some people like to mix theirs. I guess there isn't much to say about juice at Evergreen.

On to film.

Film and film series at Evergreen have changed over the last three years. Over the last three years, there seemed to be a film craze on campus. A film could be seen almost every night of the week. Monday EPIC usually had a film, Tuesday was a film sponsored by The Arts Resource Center or another student organization, Wednesday night was Academic Films, Thursday night was Take Two, sponsored by a film program and Friday night was Friday Nite.

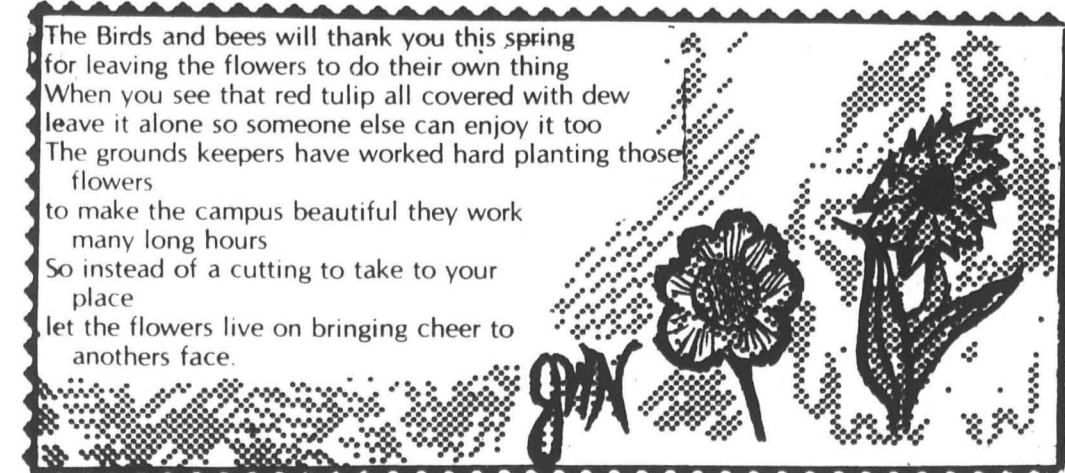
Organizations fought for a night in the Lecture Hall and sometimes two films were shown at the same time, one in the Recital Hall. Many people had an opportunity to show their intellectual virtuosity

through the choice of film that they attended... or showed.

Well, Friday Nite Films still exists. At least something is sacred. This year Fernando Altschul is the coordinator. He has chosen, "the best films I knew about, keeping in mind the special taste at Evergreen." He has "tried to bring films that have social meaning. Films that step out of stereo-typical views of women, Latin America, etc."

Altschul says the only theme that connects his films from week to week is that they are by new directors in the 60's and early 70's. He says his audiences are generally good-sized and the series is breaking even. He also says that 50% of his audience are regulars.

Some of you old-timers might be wondering what happened to the tradition of the Friday Nite Films coordinator going down on stage and giving a little talk before the movie. Well never fear: Altschul hasn't abandoned the tradition. He says he just can't go down to the stage to give a little talk when people are still buy-



By Dona DeZube

At some point in their lives, everyone realizes that there are certain problems inherent in the way that they look at the world. My problem is gullibility. I will believe almost anything that someone tells me. On occasion I've even been known to print things that even a seven-year-old would know weren't true.

I was on my way to Seattle last Saturday, when my gal pal Sally started talking about her old high school. She told me that people there would shoot up peanut butter when they couldn't find any heroin. I didn't believe her at first, but when she was willing to put money on it, I backed down.

Saturday afternoon I was standing in my kitchen thinking about these people who shoot up peanut butter, when it suddenly occurred to me that if they used chunky instead of smooth peanut butter, the little lumps of peanut would get stuck in their veins, and they'd die.

You think that's gullible? Well, last quarter EPIC sent over a blurb about a movie they were going to show. It said that the movie was "banned by Reagan." So I printed a blurb which said the movie was banned by Reagan. A few days after the paper came out, it occurred to me that Ronnie has no control whatsoever over Lecture Hall One. They wouldn't even let him book it, if he wanted to show the movie.

Then there was the time that I wrote a slightly misleading headline. Remember, "Case Against Dorm Vandal Dropped"? The story was about a guy named McGrady who was not, nor had he ever been a dorm vandal.

The day after the headline ran, I found a note on my desk that read, "Liam McGrady's lawyer called to ask where he could leave your subpoena, he's suing you for libel." Frank and John were sitting there while I read it.

"Oh my God," I said, "did you guys read this note?" I stood there for two minutes and then decided to go down to

the bathroom and barf. But, I had only taken three steps past the door when I heard John and Frank laughing.

Walking across Red Square yesterday I thought about how perfectly designed this campus is. I know that when the riot starts and the Army National Guard is called in to quell the masses, they will come onto campus through the secret steam tunnel entrance in the woods, near the Parkway. Carefully stepping over the giant slugs (in order to avoid their well-sharpened teeth) that roam the tunnels (assuming it's after dark), they will place their machine guns in the square windows

that line the stairway of the Campus Recreation Building and the CAB.

Other guards will line up near the parking loop with giant hoses, and wash us all into a giant heap in the center of Red

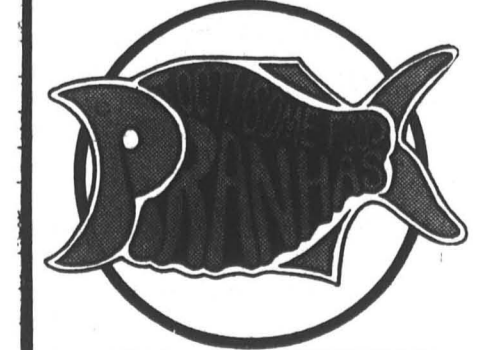
Square, near the spot where Delaware forms when it rains.

The fact that there are no hydrants anywhere near the parking loop really doesn't bother me. I'm sure the Guards will bring their own water with them.

There is one thing, though, that I don't believe, and that is that any of the former editors of this paper were ever as gullible as I am.

## Real Food

Garden Omelette	3.50	Cheddar Melt	2.95
green peppers, onions		Reuben	3.25
mushrooms, cream cheese		Fresh Spinach Salad	3.50
Piranhas' Omelette	3.75	Tuna Salad	3.75
sausage, feta cheese,		Fish & Chips	3.25
black olives		Fettuccine Al Pesto	3.25
Huevos Rancheros	2.95	garlic bread	
with home fries		Fish Sandwich	2.95
Cheese Burger Deluxe w/fries	3.15	french fries	
Blue Cheese Burger w/fries	3.75	Lasagne (meatless)	3.25
Bacon & Cheese Burger w/fries	3.75	garlic bread	
Ham & Cheese Burger w/fries	3.75	Sauteed Vegetables	3.25
Sourdough Burger w/fries	3.15	garlic bread, brown rice	
Patty Melt w/fries	2.75	Filet of Fresh Red Snapper	3.75
		grilled, french fries	



**Piranhas**  
406 E. 4th Ave. 786-9769  
(across from the train station)  
M-Th 10 a.m. to 8 p.m.  
Fri 10 to 10  
Sat 10 to 6  
Closed Sundays

## Rainy Day RECORD GO

Great selection of new records and tapes at low prices  
We buy and sell used albums  
Most complete ticket service in town

Westside Center  
Division & Harrison  
357-4755



# Letters

## THE COOPER POINT JOURNAL'S ILLITERATE OFFENSES

I obtained a copy of the Cooper Point Journal at the usual exorbitant rate. It was free. Since we started using it in the cat's litterbox, the Cooper Point Urinal, Zoe has been pissing on the floor. Page four made me want to take Zoe down to the CPJ office. I decided to write this article instead.

Rereading DeZube's "Life in Modern Times," I was underwhelmed by my task. I had allocated an hour and a half to writing, "Who Cares?" That is a serious writing offense: to take a subject I do care about—how the people of Olympia see Evergreen students—and leave me not giving a damn. Yet DeZube did raise strong feelings. For the first time in my life, I found armpit hair offensive. And may God spare the English language from "gal pal."

As to how Dona was recognized as different, I think I know. I'm not sure whether she hobbled up to the counter or tied herself to it or possibly stuck out her thumb and caught a piggyback ride all the way from the front door. I am, however, certain that normal people do not "hitch up to the counter." Attempting to cut her food with a buttockdown shirt may have been the tip off. Knives are all the rage in town right now. As an indication of the conformity of her dress, "don't exactly cut it" doesn't exactly cut it.

Maybe it was, after all, your Maryland speech, Dona. It's people from Texas who don't have accents.

The question mark at the end of the statement about Capitol Hill students must reflect her own misgivings about the logic. No question is asked.

It is the logic of the article that bothers me most of all. How a random mistake in the variety of toast Dona was served displayed the waitress' assumptions about Evergreen students, or what a gratuitous attack on high school students and waitresses will do to change those assumptions, escapes me.

If generalizations about Evergreen students are usually wrong, what about similar statements about Olympians?

My own dealings with the citizens of Olympia have been cordial. The businessmen are pleased to have my patronage; the bus drivers are friendly. Chance acquaintances have been open about their hopes and dreams, interested in mine. I've met a few jerks in Olympia, but I can introduce you to jerks in Seattle or Chicago or, for that matter, at Evergreen. There is tension between sheetrockers and carpenters, Cougars and Huskies, Democrats and Republicans. The members of any group are suspicious of the members of any other. The townspeople are exceptionally friendly in light of our self-proclaimed status as an alternative college.

If Olympians do have a bad impression of Evergreeners, maybe they've been reading "Spurtz with Gevirtz." Gevirtz's portrayal of the Health Clinic as Evergreen's perverse "Let's Play Doctor Paradise" is inaccurate in language and implication.

### LANGUAGE

1. then is misused in the first paragraph
2. erect means standing straight up, but the condoms are hanging down
3. waiting rooms do not have well-being, entire or partial
4. publicly is not a word, try publicly
5. naturalism is probably what Evergreen is a haven of, although naturalness might work with a slightly different meaning. *Naturality* is not natural.
6. the hanging condoms are a mobile, not an act
7. it is physically impossible to bump into the mobile while walking into the waiting room
8. the few signs barely infringe upon available wall space, much less fill the room
9. etc., ad nauseum

### IMPLICATION

This is where the article takes a turn for the worse. In fairness to Gevirtz, I must assume her piece reflects a desire to be cute and a lack of thought about the consequences of her writing, not her stance on sex education or her real feelings about the Health Clinic. She implies that:

1. Sex, or at least sex education, contraceptives and disease control are obscene.
2. Reusable condoms are (OH GOD) disgusting.
3. The Health Clinic is obsessed with sex.

Here are some facts about the real world: sex is as normal as breathing; people who have sex without taking contraceptive precautions are called parents; sexually transmitted diseases are real; they can be prevented; sex information is one proper activity of a health service.

I know the citizens of Olympia and many Evergreen students now have a completely false impression of student health services the clinic provides.

Maybe the first six children born to young women who are now too embarrassed to get contraceptives will be named for Gevirtz. Or maybe we can set up a Gevirtz Memorial Abortion Fund.

On second thought, why not just an apology to the busy receptionist you labeled, "the funny lady"?

Apologies are also in order to high school students, waitresses and the citizens of Olympia. Most of all, careful consideration of the quality of the Cooper Point Journal is required. If we are concerned that people outside of Evergreen understand our serious commitment to education, we can start by showing them a newspaper that is well written, carefully edited and proofread.

Roger LeVon Dickey  
Olympia, Washington

Dear Gevirtz,

In regard to your column of 2-11-82 on the Women's Clinic/Health Services; I believe that your sense of reality is, sadly, distorted.

How is it possible that you have lived 18+ years without discovering that some people:

1. Engage in sexual intercourse and assume responsibility for birth control.
2. Contract sexually-transmitted diseases and desire treatment.
3. Suffer rape and need help.
4. Are gay and have special health concerns.
5. Desire to have a greater understanding of what is happening with their bodies and how they can gain optimum health.

"PERVERSE HAVEN"??!!  
These are very real problems and concerns. I see nothing amusing about your attitude or literary style. The Clinic serves a very vital function in the college community.

Was it necessary to print your complaints in the Cooper Point Journal, first; or would it have been more appropriate to let us know how we are failing to meet your health needs. You failed to mention in your column how your exam was conducted. Nor did you mention the competency of the health care professional or volunteer. How did they respond to your health care needs? You seem to be more concerned about the ambience of the Clinic, than with our primary function—HEALTH CARE.

As of February 8, 1982, we began requesting that all patients fill out a Women's Clinic/Health Services questionnaire; we want to know how efficiently we are meeting the health care needs of the college community. Our questionnaire would have been an easy forum for your criticism.

Sincerely,  
Shana Summers  
Women's Clinic Intern

Ms. Gevirtz,  
I am writing to you regarding your 2/11/82 article concerning TESC Health Services/Women's Clinic. I am writing in response to your silly accusations (perverse haven?), but out of concern that your misleading picture of the clinic will scare students away from a surprisingly complete and inexpensive professional health center.

We're big kids, Carrie—we can take a few third-grade giggles over the fact that we sell birth control. But we are disturbed about your motive in writing the article. The sneering tone alone indicates that the intent was not to inform the Evergreen public, but an excuse to be clever and funny. Bad job.

An objective report on your visit to the clinic would include your response to our other "sex-oriented" signs concerning nutrition, current medical news, and local health facilities. For that matter, can you really put informative literature on rape and self-health under that heading?

How was your appointment, Carrie? Were you pleased with the care you received? Why choose to spend an entire column on the condom display rather than your experience with the medical staff?

The people who work in the clinic care very much about what they do. I can't believe that it was important enough to you to be known as a snide sophisticate, Ms. Gevirtz, that you could flippantly toss around the health clinic and possibly prevent someone with a need from seeking us out.

Hopefully your birth control is more responsible than your journalism.  
Midge Miller  
Medical assistant/patient advocate

Dear Gevirtz:

In response to your article in the last CPJ about TESC Health Services/Women's Clinic:

Your half-witted attempt at being cute and comical presents you as both immature and malicious. Our aim at Health Services/Women's Clinic is to provide students with optimum health care at the lowest possible cost. We attempt to maintain an atmosphere where issues such as birth control, sexually transmitted diseases and homosexual health care can be discussed and treated in a comfortable and relaxed manner. We do not have a sterile, white-walled environment filled with people wearing white coats, without faces and we are proud of it.

The fact that you perceive signs with information about speculums for self-exams, lesbian health care, men and rape and facts about rape as "sexually oriented" exposes you as being a little more than misinformed.

I seriously hope anyone who reads your article and has never had contact with Health Services/Women's Clinic, will see it for what it is; a juvenile endeavor at pseudo-intellectual sarcasm by someone with a severe lack of awareness.

D. Christina Bengston  
Health Services/Women's Clinic  
Medical Assistant

Dear Carrie,

This letter is in response to your article concerning Women's Clinic/Health Services on 2/11/82. First of all, let me say that we're glad to see you using the clinic. We like to see as many students as possible making use of the facility as it is the lowest-priced quality health care in Olympia.

Advertisements and health care pamphlets inform students of pharmaceutical products available to them at a very low cost. It is true that these products include birth control methods. We have assumed that the Evergreen community is mature and able to take birth control seriously while viewing the necessity of it with candor. We also distribute a sizeable quantity of written material pertaining to various ailments and social problems. We do this not to "play doctor," but to offer students the opportunity to assess their own health needs and decide for themselves whether or not they need to come in and see one of our very real health practitioners.

As far as the "funny" atmosphere of the office goes—we try. Our employees are friendly and personable. We are all responsible and quite able to adopt a serious demeanor when the situation demands it.

Your letter may be the only contact some people in the Evergreen community may have had with Health Services or the Women's Clinic. I hope that no one has been discouraged from using our services because you labeled it a "perverse haven." Our efforts to relax the social stigmas that often surround birth control and sexuality have obviously offended you. Our aim was precisely the opposite. We do encourage constructive criticism and hand out annual questionnaires regarding our performance. Unfortunately we couldn't find the questionnaire that you filled out because the reports were all favorable the day of your appointment. You did fill one out, didn't you?

Sue Murdoch  
Women's Clinic Coordinator

I got the transportation, story of a lifetime, blues... Oh, it goes on and on, like no buses after 8 p.m. in some cities, none on Sundays (the Lord demands that you stay home), no Greyhound to small towns—you gotta hitch-hike or hike, period. You gotta "get along" with your neighbors or forget their aid (they don't have to "get along" with you). A woman isn't safe in her house or at work or at school or on the road or on the bus or at the station or in the parking lot nor even in a taxi cab. Yes, that's woman's lot for simply being born into a female body!

Cities are made for cars, not people—without endless parking lots, sidewalkless interchanges (where if you get let off, tough luck), stoplightless corners on busy streets (where you wait ten minutes to cross and when you do you endanger your life). Hey now, this reference includes Harrison Street. (YUCK... where you can't walk without being honked at or hassled if you're a woman). I know all this—I've lived through it.

People say, "I could never live without my car!" Well, I have for 31 years. In fact people NEED to live without cars if this planet is to survive! Anyone who walks or rides bike or hose sees and smells what the drivers leave behind—smog and litter, carelessly thrown out. I am part of the garbage of this society because I don't fit into its little cogs. I don't choose to support pollution and private solution by spending endless money on cars and repairs. I really have no choice because I couldn't pass the eye test, but that has nothing to do with my ethics! Yes, I carpool with others. So when I chose to live in the country, which I need for my sanity's sake, and come to town for events and self-employment, it have to follow my neighbors' schedules. I have been in town from 9am-midnight. If I miss connections (which has happened more than three times in the past week), I end up stranded on the TESC campus (or if before 11pm, Olympia)—once again on the streets against my will with only three hours' sleep. When I asked two people this morning if they could help me out, that I needed a place to crash, they said "go to housing."—!! I had explained the situation, and one even knew me! Can you believe your "fellow" hippies are so heartless!?

And dig this—one neighbor was so unaware, self-righteous, and condescending as to (and say she wasn't) come down on me, telling me the "honest truth" that I am dependent, clinging, and childish (my words—hers escape me). She was prejudiced since she's only been around me three brief times—Instead of having community consciousness!!! How can anyone ignore someone without basic needs, especially a local person, especially an acquaintance?! HOW COULD ANYONE BLAME THE VICTIM?! I am a pawn in the society's game! You try walking in my moccasins for 31 years! See how you fare! I want control over my own life! I don't want to be told to move or stay home. And what next? Reagan smeagan cuts off public transit funds!!! Hey, THAT'S WAR!!!

—Arnica

To All the Needy Students:  
It is that time of year again—for all of us who depend on the government and the state for most of our educational expenses—to get our acts together and apply for next year's financial aid. Ed says that sounds pretty good.

For those of you who have applied for financial aid in the past, you know that getting your applications in on time (or early if possible) makes it both easier for us to award you and, if you are not eligible, easier for you to investigate alternatives. If you are interested in college work study, please let us know as soon as possible. Our funds are very limited so, as a rule, students who do not apply in time for financial aid stand very little chance of receiving work study.

It breaks Ed's heart when students who are eligible for aid do not apply—or apply too late. I have seen that pained look in his eyes, poor Ed. Put a smile on his face, send off your financial aid forms. We are waiting for you over in the Financial Aid Office, if you have any questions or problems drop by. Please, do it for Ed (and his mom).

Kathleen Doherty

Editors:  
I awoke last night at about 3:30 a.m. in my room. He ran out the door before I had a chance to get a description of him. Fortunately, I didn't lose anything. Maybe you won't be so lucky. Keep your door locked when you sleep.

Student living in Dorm A

Continued on page 6

Win!!!  
IN THE  
Cooper Point Journal Raffle

# Opinion Is There a Solution to the Sauna Problem?

During the past two weeks several short-term solutions to the inequities in the women's sauna facilities have been presented and discussed. Proposals have included switching the men's and women's locker rooms each year, renovating and thereby equalizing the existing saunas, and installing a temporary additional sauna to the women's locker room.

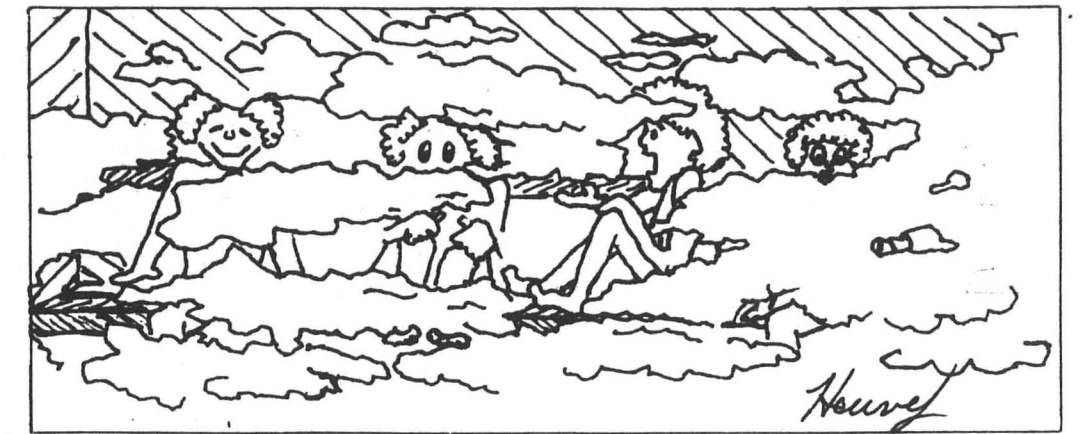
The issue in question is both legal and ethical: Title IX of the Federal Education Amendments requiring equal recreational facilities for men and women was passed in 1972. TESC's locker facilities were built in 1973 on the "70-30" plan, assuming that 70% of locker users would be men, and 30% would be women.

Forty-nine percent of the locker room usage last year was by women, and 51% was by men. There being no way of denying the failure of the "70-30" plan nor the federal law, attempts were finally made to equalize the situation.

The results, however, are far from satisfying. At first glance the proposal to switch the locker rooms on a yearly basis

seems highly plausible; the cost, estimated by facilities, would total \$1,634, which could be reduced by \$800 if volunteer labor was incorporated. The money could undoubtedly be raised for such a project, which would be temporary, of course, until the women's locker room could be expanded to equal the men's.

The argument against this involves the new gymnasium project, for which TESC seeks funding from the legislature. It is superfluous to deny a direct solution to inequality out of fear of legislative reaction. By supposing that TESC's chance for acquiring funds for the gym would be threatened by such an action we are over-exaggerating ridiculously. The switching could be carried out effectively and economically without affecting the gymnasium project, except perhaps by illustrating the urgency of the inequity situation. The legislature would be forced to recognize how important the locker room expansion is. Meanwhile women could have the benefit of the larger space every other year.

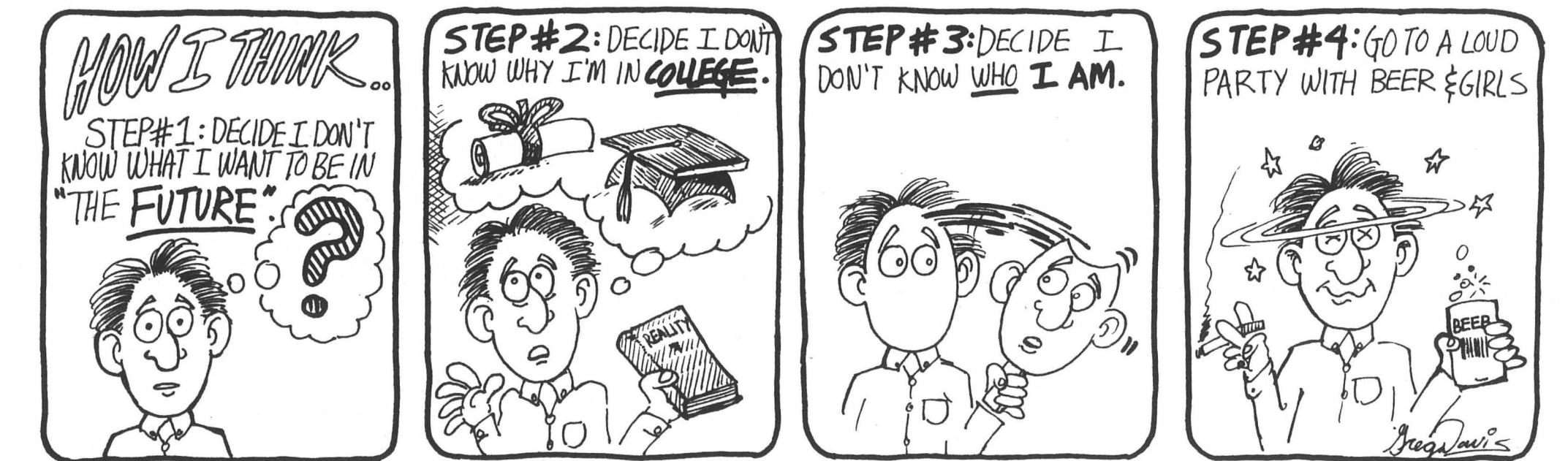


The proposal to add a temporary sauna unit to the women's locker room does provide a solution to the sauna inequity; however, since nearly as many women as men use the locker space, it does get crowded, and an extra sauna unit would only take more space.

Complete expansion is definitely the best answer; why should the money necessarily come from the legislature? If Evergreeners care enough about the problem, sources such as S&A's equipment

fund could be tapped to provide the necessary resource.

As it stands now, none of these solutions will take effect before September 1982. Until that time, women will be forced to make do with the crowded sauna and locker room space. One wonders if this situation is really much better than the proposals to close the saunas altogether, or, better yet, to reduce the men's sauna to equal the women's, a cost of merely \$1,500.



# Forum Dreaming a Little Bit

By Kris Nelson, a student in the Exploration of the Future Program.

Evergreen's alternatives to traditional education have weathered legislative storms and public scrutiny for a decade now. At a closer look, colleges and universities nationwide have assimilated Evergreen's interdisciplinary principles into their learning methods. The truth is, nevertheless, that Evergreen has not initiated significant strides towards better education since its conception.

So where does that leave Evergreen? While facing a new decade, and new social, economic, and political trends, we cannot neglect our incomparable potential to evolve, and to become, a leader again. In view of successes and errors, it's time to look ahead.

The initial steps needed to chart Evergreen's future are underway. The results of the national conference on alternative higher education, held here last September, could alter the college's philosophical posture. In addition, the Long Range Curriculum Planning Disappearing Task Force (DTF) is updating both the Role and Mission of the College and curriculum goals for the next six years.

Key administrative positions are up for consideration. A new Vice President/Provost is being sought to replace Byron Youtz, and Dan Evans remains unsure about requesting another term as President.

The important question here is what new criteria, students and faculty will prescribe for these positions, when choosing the direction Evergreen should take.

Not only is the Evergreen community at a crossroads, but all sectors of society are questioning priorities, and re-examining the world we've created.

Many people, from carpenters and small businessmen to ministers and physicians, feel that centralized human services, centralized food and energy production, centralized business, and centralized government are failing to provide viable solutions in a crisis-ridden world.

This is an opportune period, consequently, when workable alternatives can be readily applied. Donald Keyes, president and founder of the Planetary Citizens, describes the times as "a teachable moment" in history; people are receptive to new perspectives. Similarly, Joel Schatz, an international energy advisor, asserts that, "the bolder you get in this decade, the easier it will be to do things, because people are having to think totally differently."

At Evergreen, thinking differently from most minds requires little motivation. And with adequate homework, such thinking can translate into desirable solutions, like barter, household, and recycling based economics; local and household production of food and energy; holistic, preventative health care; social services from community-based means; and participatory local government through neighborhood associations. In short, forward-looking ideas need not be kept in our heads nor limited to armchair discussions.

To erode institutional stagnation, Evergreeners must challenge themselves for the coming years. Given the college's transitional stage now, each of us has two timely, yet privileged, roles: dreaming and expressing, two activities Evergreeners don't need to practice.

To make our dreaming effective, we may consider a few questions. First, we must ask what sort of world we want, and second, how should Evergreen help bring it about? How can we creatively build on Evergreen's experience and non-competitive approach? How can academic pro-

grams contribute to a positive future for Evergreen, Olympia, and the Northwest? What changes are needed in the way we learn, in order to actualize our dreams?

After formulating an "Evergreen dream" expressing it can be just as interesting. Many possibilities await us. First, select a way or way's to communicate your ideas—whether by drawing, writing, filming, or otherwise. Then submit them to the Information Center in the Campus Activities Building by March 4. Ideas will be reviewed by the Long Range Curriculum DTF, deans, faculty, and administrators.

Like everyone I have few thoughts on Evergreen's future. To initiate dialogue, here are a few ideas.

—Re-structure annual and basic programs around real-life, problem-solving and issues.

—Design academic program to undertake joint self-help projects with other local groups, thus building a self-reliant, culturally rich community.

—Integrate portions of the Organic Farm and the Ecological Agriculture Program with a student-managed deli and food service.

—Make garden plots available adjacent to the residence halls, complete with tools, solar greenhouses, composting bins, fishraising tanks, and chickens.

All this can make for great times, alone or together. Ask a friend what Evergreen can be in six years. Bring it up at a party, a potluck, or a dull moment. It could make for the best seminar yet this quarter.

## The Cooper Point Journal

Editor: D.S. DeZube  
Managing Editor: Katie Lieuallen  
Writers: John Bauman, Carrie Gevirtz, John Nielsen, Pat O'Hare, Ben Schroeter, David Goldsmith, Mark Christopherson, David Gaff  
Graphics: Karen Hueval  
Business Manager: Desiree Amour  
Advertising Manager: Patrick McManus  
Photographers: John Nielsen, Paul Stanford  
Production: Shirley Greene, Shelton-Mason County Journal

The Cooper Point Journal is published weekly for the students, staff and faculty of The Evergreen State College. Views expressed are not necessarily those of the college or of the Journal's staff. Advertising material contained herein does not imply endorsement by the Journal. Offices are located in the College Activities Building (CAB) 104. Phone: 866-6213. All announcements for News and Notes or Arts and Events should be typed double-spaced, listed by category, and submitted no later than noon on Monday for that week's publication. All letters to the editor must be TYPED DOUBLE-SPACED, SIGNED and include a daytime phone number where the author may be reached for consultation on editing for libel and obscenity. The editor reserves the right to reject any material, and to edit any contributions for length, content and style. Display advertising should be received no later than Monday at 5 p.m. for that week's publication.



# Avant Garde Theatre Creates Ripples

By J.W. Nielsen

The unconventional play/performance *Surface Tension*, by Laura Farabough, left many in the audience at Evergreens' swimming pool confused and baffled, last Friday night.

Conceived, written, and designed by Laura Farabough, *Surface Tension* was premiered at the Bay Area Playwrights Festival in August 1987. Since then it has toured swimming pools in Northern California and has received a grant from the National Endowment for the Arts.

I could not help but remember the old Burt Lancaster film, *The Swimmer*. The one where he swims across suburbia, swimming pool to swimming pool in search of his freedom. One must admit that a swimming pool is a weird place to take your complaints with society to, but then again, swimming pools seem to be a status symbol in these days of economic woes.

The play did not seem to have a central plot. What was important was the swim-

ming pool and the various events around and on the surface of the pool. A slide/tape show served as an audio-visual narration to the 45-minute play. The two performers from the Nightfire Company, Cantira Day and Mark Sackett, did not utter a sound the duration of the show but instead centered their actions around little skits that were all related to the whole.

One of these skits found Mark Sackett in a small rowboat in the middle of the pool. As he snapped hoops over floating pyramids he was awarded prizes by Ms. Day. Who could miss the sexual overtones?

Farabough built this play by using various events and relationships usually found around water such as duck hunters after ducks and lifeguards after women. The dance the hunter goes through is very much like the dance the lifeguard goes through as he searches for the woman. The duality of meanings was a very essential part of understanding the show. Overall I think the show pointed out that bizarre and sexist attitudes lay under events that have become acceptable in our present society.

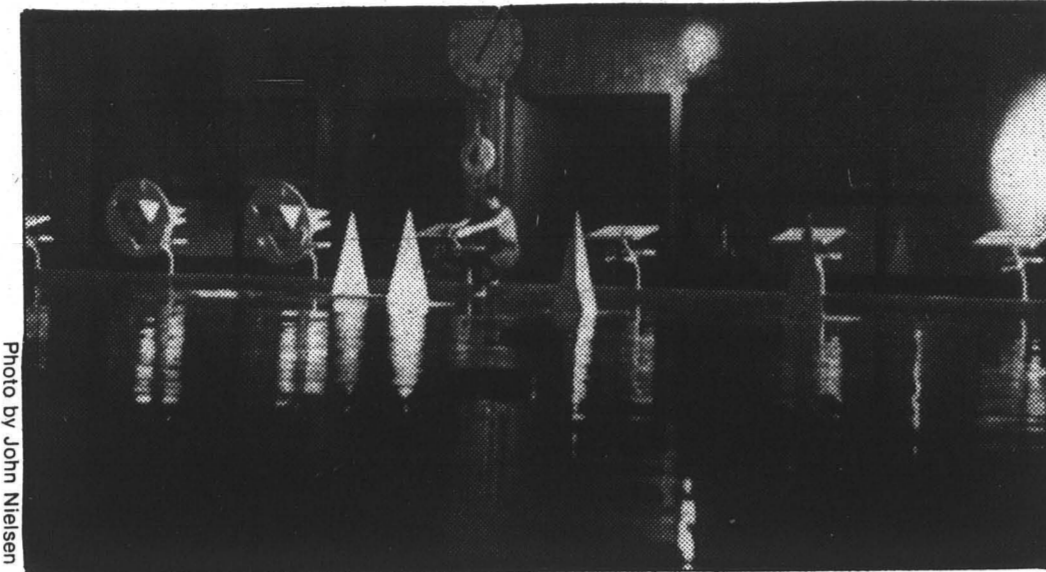


Photo by John Nielsen

This different approach to theater, known as a location show, is not new to Farabough. She has received awards for such productions as *Somewhere In the Pacific*, which was performed at a beach north of San Francisco and *Auto*, which was performed at a gas station. What appears to be important in this style of theater is the relationship between the location and the content. It takes a trained eye to see deeper into this pool of thought.

For a brief hour Friday we were transported to a swimming pool in California. Some of those whom attended the performance told me that they had expected a water ballet and not an avant-garde theater piece. Maybe they had not been prepared to go to California on such short notice.

The surface tension was reflected in the eyes of the audience as they left the Rec building, proving that the play had been a success.

## Film Review

# The Sixth Easy Piece

By David Goldsmith

*The Border*, directed by Tony Richardson answers the question: "What ever happened to Jack Nicholson at the end of *Five Easy Pieces*?" Well, it seems he swapped the Midwest for the Southwest; a dizzy-brunette (Karen Black) for an air-head blonde (Valerie Perrine) and an oil-rigger's boots for a Border Patrol uniform. The names may change but the persona stays the same.

Jack Nicholson is great. Jack Nicholson is perhaps the finest actor in Hollywood. He was outstanding in *Carnal Knowledge*, *Easy Rider*, *One Flew Over the Cuckoo's Nest*, *The Last Detail*, *Chinatown*, and most recently, in *Reds*. A great actor, to be sure, yet, after seeing *The Border* one is tempted to ask why. Is it that his greatest appeal, like that of Chuck

Bronson, lies in the fact that he always plays strong, introspective and enigmatic characters? Is it that he carries himself like some hero out of a Knut Hamsun novel—with a distance at once unnerving and enticing? I don't know.

One wonders if this is an affected persona he hides behind—and if so one must then wonder what lies behind the mask that is Nicholson in each of these movies. Is it that he is a chameleon, like the late-great Peter Sellers was purported to be, that is to say only the sum total of the affectations he affects? Can it be there is really nothing behind the costume, the masks? I'd like to know who he is when he gets home, alone. And I truly hope that when it comes time to do the *Jack Nicholson Story* Jack will still be around to play the part.

But this isn't saying much about the movie, I know. Okay, let's talk about the movie. *The Border* is the Mexican/American border near El Paso and Nicholson can just moved there with Valerie Perrine in order to keep the wetbacks on their side of the Rio Grande. Things start to fall apart for him pretty early on however. For her part Perrine tries to make him happy by buying waterbeds, couches, a swimming pool and by throwing parties. And she doesn't understand why he's not happy. The viewer too must wonder—just what is it that he wants? Hasn't he learned anything since *Five Easy Pieces*? Apparently not.



## Letters

Continued from page 4

To the editor,

The first thing I don't want to be misconstrued as is anti-gay. But let me say a few words in favor of the freedom of expression of heterosexuals at Evergreen. I don't know if it's just me, but around this campus, I'd feel embarrassed to be seen holding hands with someone, unless they were of the same sex. This is the result of subtle peer pressure: not to associate with men, unless it is in a strictly politically correct mode. In other words, it's okay to talk with men about religion, Reagan, or radishes, but whatever you do, don't flirt with them, because then you will be acting out a stereotypical role.

This reminds me of when I was in second grade, and us girls could not drink out of a water faucet if a boy had just drunk from it, because we might get "boy germs." Boys, we purported, were all scummy, dirty and rough, and they played with snails and puppy dog's tails. The same stereotype carries through into adulthood, where all men are labeled as rapists. All men aren't rapists. Most of them are good people.

All I'm saying is that you can push a point too far. After women have discovered who we are as women, and men have discovered who they are as men, maybe we can all discover each other as men, as women, and as people. I'd like to be able to hold hands with whomever I choose, even if the person is a male, and to do it in public even.

Magdalena Lisa Donally

MITO — DAYTONA — DIPLOMAT — RAM — GENERAL — MTD — DUNLOP — SEIBERLING — HOLLEY — PERELLI — DUMHILL ALLIANCE — CHAPPAPELL

# TRES

\* Polyester • Cord Body • Tubeless  
\* Blackwall • LTR Tread Design  
FLEETWOOD TRACTION  
A78x13 G78x14 C78x15  
\$24.95 \$39.95 \$34.95

## NATIONAL RADIAL TRACTION TIRES

SIZE	F.E.T.	PRICE
175/80R13	2.03	\$5.95
P185/75R14D	2.35	\$9.99
P185/75R14E	2.54	\$12.95
P205/75R14F	2.72	\$8.95
P215/75R14G	2.87	\$9.99
P225/75R14H	3.02	\$7.94
P185/80R15A	2.13	\$6.85
P205/75R15F	2.78	\$8.95
P215/75R15G	2.93	\$7.95
P225/75R15H	3.08	\$9.95
P235/75R15L	3.33	\$9.99

**RAUDENBUSH MOTOR SUPPLY**  
412 S. Cherry 943-3650  
Open 7 days a week  
8a.m. — 8p.m.



Groceries  
Fresh Produce  
Fresh Meats  
Imported Beer & Wines  
Sundries  
Magazines  
Self Serve Gas

7 a.m. - 12 p.m.  
365 days a year

2010 Division N.W. Olympia, WA  
Handy Pantry

## COLUMBIA BAKING CO.

Traditional Breads and Pastries  
111 N. Columbia  
352-2274

ALL WAYS TRAVEL SERVICE, INC.



WESTSIDE SHOPPING CENTER  
OLYMPIA, WASHINGTON

943-8701  
943-8700

## COOPER POINT Journal

"Four dollars will bring the *Cooper Point Journal* into your home every week for one year; keep in touch with Evergreen from the students' perspective. Order your subscription today! Send your name, address, phone number, and \$4.00 to *Cooper Point Journal*, CAB 305, The Evergreen State College, Olympia, WA 98505."

# News & Notes

**THE SOCIETY FOR CREATIVE ANACHRONISMS** meets on Sundays, at 7 p.m., in ASH 30. Anyone interested in finding out about SCA is welcome. For more information call 866-9149.

**A FORUM FOR ARTS ISSUES** aimed at emerging artists and art students, is being sponsored by Arts NW. The four-week seminar session will meet from 1-4 p.m., starting Sunday, February 21. For more information call 1-682-4435.

**BUILDING A SOLAR COLLECTOR** is the subject of a hands-on workshop sponsored by the Energy Outreach Center, Saturday, February 20, 10 a.m.-4 p.m. For more information call 943-4595.

**AUTHOR WILLARD R. ESPY** will be visiting the TESC Bookstore on Tuesday, February 23, at 3:30, to sign copies of his books.

**THE HUMAN RIGHTS FORUM** will be addressed by Evergreen student Jonathon Porter and Beth Harris. Porter has recently returned from Central America, and will be sharing his experiences and perceptions of the situation there. This brown bag luncheon meeting will be held February 18, at noon. Call 352-9944 for more information.

**DR. ADA HATCHER** of Lacey will give a talk and lead discussion on the subject, "Over-the-Counter Drugs—Useful or Useless?" at the Lacey Public Library. The talk will be Wednesday, February 24 at 8 p.m. The program is sponsored by the Friends of the Lacey Library and is free to the public. The library is located in Lacey Village Shopping Center at corner of College and Lacey Blvd.

**THE 1982 GRADUATION COMMITTEE** will meet at 5 p.m., Thursday, February 25, in CAB 108 or 110.

**DREAM PSYCHOLOGY AND IMAGINATION**, a series of presentations and a workshop, begin February 23 and runs through February 27. The program consists of four brown bag lunch presentations Tuesday through Friday in CAB 306, noon to 1:30 p.m. Tuesday: Richard Jones, "Dreams, Imagination and Immortality"; Thursday: Douglas Cohen, "Dreams and the Imaginal"; Friday: "Dreams and the Imagination," a panel with Jones, Schofield, Cohen and Richard Rowan. "Enliven Your Spirit," an experiential workshop, begins 7 p.m. Friday night and 10 a.m. Saturday. The workshop is \$25, including a \$10 registration deposit when you register at the Counseling Center. Individual dream counseling with Wendy Schofield and Douglas Cohen is also available, \$10/hour for Evergreen Community Members, \$15/hour for Olympia Community Members. To schedule appointments, call the Counseling Center at 866-6151.

**1982 ANNUAL DAY OF AWARENESS** THEME: "Let There Be Peace and Let It Begin With Me" Saturday, February 27, First United Methodist Church, from 8:30 a.m. to 3:30 p.m. Featured speakers: Dr. Luke Magnotto, physician and member of Washington Physicians or Social Responsibility, and Shelley Douglass, candidate for ministry and co-founder of Ground Zero Resistance Center, Bangor. The Day is free. Luncheon reservations (\$3.50) made by calling Mary (456-0413) or Dorothy (866-4274). Community most welcome.

**TESC'S ORGANIC FARM** is doing on-campus outreach through the Environmental Resource Center. Information on alternative agriculture, organic gardening techniques (spring planting!), pesticide problems, and alternatives, local agriculture politics, current seed catalogs, as well as resources at the farm itself are available at the ERC, CAB 103.

**SQUAREDANCE NIGHTS AT TESC** are the first and third Tuesdays of each month. Dancing is done to a live band and no experience is necessary. The music, clogging, and good old-time fun happen in the Evans Library. Call 352-7007 for more information.

**A SIERRA CLUB PROGRAM** will be sponsored by the Environmental Resource Center on Wednesday, February 24, at 7:30 p.m. in CAB 110. Pam-Crocker-Davis, an Audubon lobbyist will be speaking about toxic and hazardous waste disposal bills, which are currently before the legislature. "The Serpent Fruit," an Environmental Protection Agency film, will also be shown.

**THE FIRST ANNUAL WINTER FESTIVAL** continues this week, as the entire campus tries to shake the winter blues. February 19 is the date for the Second Annual Schomers and Dreamers Jubilee, which honors ten-year staff and faculty casualties. Tickets are on sale at the Cashier's Office.

**THE EVERGREEN COLLEGE BIKE SHOP** is offering one major bicycle overhaul (value \$25) in exchange for artwork for a sign to be hung on the main floor of the CAB. The sign will be about 1 foot by 4 feet made of plywood. It should be finished by the end of winter quarter. If you are interested, leave a message for the shop coordinator in CAB 305 or come down to the bike shop Monday or Wednesday mornings.

**THIRD WORLD STUDENTS ARE INVITED** to an Admissions Feedback Seminar. Come hear and discuss how Evergreen is attracting more Third World students. Date: Tuesday, February 24. Time: 2-4 p.m. Place: Library 3205

**AFFIRMATIVE ACTION BATTLEGROUND** A panel of women in the trades will discuss their on-the-job trials and triumphs and the need to fight rightwing attacks on affirmative action at a public forum on Thursday, February 18, at Freeway Hall, 3815 5th Ave. N.E., Seattle. The program begins at 8 p.m., door donation is \$2 for childcare or transportation, call 1-632-1815/7449.

**THE OLYMPIA FRIENDS MEETING** will present E. Raymond Wilson (a long-time peace activist) speaking on "Fifty years Struggle for Peace." Wilson will discuss foreign policy, relations with the Soviet Union, and some insights and reminiscences from his half century of peace activity. The speech is free and open to the public. Come to the Olympia Timberland Library meeting room at 9th and Adams, Saturday, Feb. 20, 2-4:30 p.m. For more information, call 456-1841 or 786-9604.

**TWO WORKSTUDY POSITIONS** are still open in Student Accounts. If you're work-study qualified and interested call David Ludd at x6448.

**A SEXUAL ABUSE SUPPORT AND SHARING GROUP FOR WOMEN AT EVERGREEN:** Meetings are open to women who have been sexually abused and want to share experience, feelings, problems, and solutions in a supportive atmosphere. This is a **Recovery Group** sponsored by Evergreen faculty/student and counseling services. Meetings will be held Wednesday mornings from 9:30 to 11:30; LIB 1608. For more information, please call Doranne 866-3334, Wednesday through Friday 8:30-12:00 or 3:30-5:00. The first meeting will be February 24.

**A JEWISH-ISRAELI issues** interest group has formed and is holding weekly Shabbat potlucks and discussions on Judaism, antisemitism and other relative issues. For more information contact: Sheri Gerson at 352-2589.

**THE PUGET SOUND BLOOD CENTER AND HEALTH SERVICES** would like to express their most sincere thanks to all who participated in the Blood Drive held February 9. The drive was the best ever recorded at TESC with a total of 125 individuals who were able to donate. Thanks to everyone who took the time to give the gift of life.

## Capital Mall

Continued from page 1

Allen was told, during his meeting with Bundy and McWhorter, that a number of recent court decisions involving malls have found that if a mall is open to everyone it becomes a public place, and that Capital Mall doesn't want that to happen.

Smith did obtain permission from the South Sound Shopping Center. The manager of that mall, Richard Apple, said he thinks the social aspects of shopping malls are underplayed and that, in many respects, malls have taken over the place of the town square. He said that for this reason, South Sound permits the use of its mall for purposes that are not necessarily in alignment with the management's philosophy.

Allen said he got the impression that Smith had a negative view of shopping malls, and that maybe Smith had projected that view, during his conversations with the mall's management people.

Smith said that this was true to a certain extent but reiterated that his views would not be expressed in the film. Capital Mall is managed by the Hahn Corporation, which is based in California.

## Tuition Hearing

Continued from page 1

Also testifying against the bill were representatives from the Council for Postsecondary Education, The Washington Association of University Students, the Associated Students of Western Washington University, and the Council of University Presidents.

At the end of the hearing, Sen. Goltz said that in view of the limited support for the bill, "we'll put it on hold, for a year or two."

## Internships

**News Department Intern**  
Tacoma, Wash.

Intern will do research and provide assistance in the production of news programming, including work with the news wire, gathering and updating news information, writing scripts, and such other duties as may be assigned.

Prefer student with journalism and/or broadcast background with good communication skills.

1-3 quarters, 40 hours per week (negotiable), volunteer internship.

**Education and Information Intern**  
Eatonville, Wash.

Opportunity to create, produce and present an orientation to a wildlife park and a general purpose introduction to the park. Programs are to be in video and/or slide-tape format. Prefer student with background in media production with good communication skills. Some background in biology and history would be helpful.

1 or 2 quarters, hours negotiable, volunteer internship with some expenses paid.

**Field Production Assistant**  
Portland, Ore.

Intern will work directly with production photographers, producers, directors, and clients. Primary duties include assisting with set-up of equipment in the field, lighting, logging scenes shot and production assistance for photographer/lighting director and director-in-charge. Secondary duties will be assisting with organization and operation of field production unit under supervision of production photographers. Internship will also include extensive exposure to studio production, control room procedures, post-production editing and general station operations.

Prefer student who has a desire to go into field production as a career goal.

1-3 quarters, hours negotiable, volunteer internship.

Deadline for application: March 1 for spring quarter. Resume and letter of recommendation from faculty member are needed to apply.

**Production Assistant Intern**  
Portland, Ore.

Intern will assist in researching material for a weekly television news program and in its actual production. Intern will be encouraged to contribute and develop ideas for future program stories. Some opportunity for script writing may be offered if the intern is qualified.

Student must have ability to do research. Knowledge of interviewing techniques and television would be helpful.

**Summer Mental Health Internship**  
Washington, D.C.

This internship provides psychiatric experience for students interested in a mental health career. Interns spend their time in clinical areas and in class. The intern's clinical duties most closely resemble those of a psychiatric aide. Emphasis is placed on providing the intern with learning experiences and exposing the intern to the roles of various disciplines of the health team. Interns are expected to participate actively in the treatment program.

Prefer student who is entering or in senior year and interested in pursuing a mental health career. A course in abnormal psychology is a prerequisite. Student must be able to rotate clinical experience hours between the day and evening hours of duty as well as weekends.

1 quarter, 40 hours per week, \$1050 stipend for the quarter.

Deadline for application: March 1 for summer quarter. Resume and letter of recommendation from faculty member are needed to apply.

**Television Production Assistant**  
Tacoma, Wash.

Opportunity for student to perform production assistant duties as required, both in studio and on location.

Prefer senior level student with academic experience in the field of communications.

1-3 quarters, 30-40 hours per week, volunteer internship, some expenses paid.

**WILDERNESS QUARTER**

Backcountry Field Studies  
April 10-June 7, 15 units  
Sierra Natural History  
Wilderness Instructor School  
Wilderness Photography  
Kuaaina "Backcountry Hawaii"  
Desert Canyons of the Southwest

Wilderness Studies  
Carriage House  
University of California  
Santa Cruz, CA 95064  
408-429-2761

**Capitol Skin & Scuba**  
Supplies-Rental-Classes  
Air-Boat Dives  
107 E. State  
357-4128

**mandarin house**  
京津樓  
206-352-8888  
111 North Capitol Way, Olympia, WA 98501  
SZECHUAN • PEKING • CANTONESE  
AMERICAN • VEGETARIAN DISHES  
EXOTIC COCKTAILS  
Closed Tuesdays