

This Week's Events

TONIGHT

Have we gotten weird yet?

Bebop Revisited 9 p.m.-midnight, also Saturday night. \$2. Get Jazzed at Bebop Revisited's first Olympia performance in over eight months.
An Evening of Music 8 p.m., Recital Hall. Free, with childcare in Lib 3221. The Student Performance Class presents "An Evening of Music," vocals and instrumentals performed in classical and contemporary styles.
Ultimate Frisbee 3-5 p.m., Athletic Fields. The Ultimate test of your flying disc skills. Beginners are welcome, as well as more advanced players.

Saturday

BBQ a T.V. set

We Never Forget: Southeast Asian Refugee Stories On *The Evergreen Hour*, 6:30 p.m. KTPS-TV, Channel 12 in Tacoma and Olympia; Channel 15 in Chehalis.
Dance with the Ducks 9 p.m., Olympia Ballroom, on the corner of Legion and Washington. General admission: \$5, Alumni Association members get in for \$4. Sponsored by the Alumni Association.

Sunday

The question is moot

More Ultimate Frisbee 3-5 p.m., Athletic Fields. Open to all disc-ers, beginners too.

Wednesday

don't look here

Film, Video, Animation, and Audio Screening 7 p.m., Recital Hall. Screening of productions by Evergreen Staff, students, and faculty. Childcare provided. For more information, call Marge Brown at 866-6000, ext. 6249, 6279.
Jazz at the Rainbow 9 p.m., no cover. Bob Meyer performs every Wednesday night.

Art Galleries

Big and little fun, all in one handy package.

Evergreen Gallery Two The Evergreen Photography Exhibit, featuring works by advanced photography students studying with Bob Haft and Tracy Hamby. Through June 9.
Evergreen Gallery Four Recent drawings and paintings by Evergreen student Michael Jenkins. Through June 9.
Gallery 210 1/2 210 1/2 W. 4th. *Artist, Model, Portrait*, a series of portraits by Dave Dickinson, and *Persistence of Thought*, photos and poetry by Jim Morrison, through June 30. Opening reception and poetry reading 7 p.m. tonight.
Marianne Partlow Gallery 500 S. Washington. An exhibition of mixed media constructions, paintings, and prints by Lawry Gold. The artist will be in the gallery for a discussion of his work on June 8 at 11:30 a.m.
Childhood's End Gallery 222 W. 4th. *Olympia: Downtown/Around*, illustrations of historic structures by Tom Fisher; and *Water Weavings and Secret Ridges*, color photography by Peter Morrison. Through July 15. Artists' reception tonight, 7-9 p.m.

Coming Soon

We mean it, man

June 15, 16: **Crisis Clinic Gala Garage Sale** 311 N. Capitol, downtown. Donations are still needed for the sale; for more information, call 754-3888.
June 28: **"Crucified, Resurrected, and Real Down"** 8 p.m., Smithfield Cafe, 212 W. 4th. \$1 at door. A poetry reading by Jim Morrison, "contains no Satanic messages."
June 15: The SW Astronomical Society will present a star party (weather permitting) from dusk to dawn at the TESC meadows. Bring your telescope (if possible). For more info call Matt, 866-2122.

Squid

Squid Beer: the official drink of the CPJ Official sponsor of the 1985 Squid Olympics

The **Twilight Zone Gallery** Tenth Floor, A-dorm. The Twilight Zone Gallery was raided by a crack team of Health Department and ASPCA commandos last Wednesday night. These brutal ruffians, citing unsanitary aquariums and cruelty to squid, tipped over our squid tanks, threw our stockpiled squid food into the swimming pool, and generally made one hell of a mess. The squid immediately went into shock from which they have yet to recover. To help drown our sorrows, the Twilight Zone staffers are throwing a Big Fun Squid Party at Kurt Batdorf's house (though he doesn't know it yet), at which time the decision will be made on whether to reopen the gallery in September. Of course, this decision will depend on whether the squid survive their mistreatment at the hands of the law. Stay tuned for the answers to these and other vital questions: Will the infamous squid be back to torment you through another year? Were the invaders really from the ASPCA or just pissed-off CPJ readers? Is anything really worth it? Find out this fall. In the meantime, have a crustacean summer!

SIX FEET O' FUN, SAYS FEST-O-MAN

Quam, Squid, Wendi Kerr, BOB, Mike McKenzie, Fest-o-man, Kurt Batdorf

bag o' sponges

Kurt: "Road Trip!"
"Is the coast clear?" —Wendi
"It's getting a little Eric" —Tim QWNGA
"Too much wicked frivolity and widespread joviality" —Dave
"When I get outta here, I'm going someplace where it's always sunny" —Mike

PATRICIA KARNAY'S

- paper consumables
- party needs
- audio cassettes
- Management
- Motivation
- organizers

TIMESAVERS
for active people
214 W. Fourth, Olympia 786-0420

Office
Closet
Kitchen
Time

HOUSE OF ROSES

Corsages
Presentation Bouquets
Plants
Gifts

Fresh Flowers
Over 300 varieties of balloons

American Express, Diners Club, Carte Blanche, Visa and Mastercard orders accepted by phone

1821 Harrison Avenue
Olympia, Wa 98502
754-3949

Delivery Available

The Bush HAIR DESIGNERS

call 943-0707

for a fresh, summer image--
Olympia's Color Specialist

211 E. 4th Ave.

the Rainbow Restaurant

BEST PIZZA IN TOWN

"By the Slice, or buy a Pie"
International Lunch Buffet
Wednesdays and Fridays

jazz.

Bebop Revisited (featuring Bert Wilson, Chuck Stentz, Joe Bague, and Bob Meyer)
Friday and Saturday June 7-8th
Corner of 4th and Columbia Cover \$2.00 753-9943

CAPITOL SCUBA

- INSTRUCTION
- WET SUITS
- REPAIRS
- RENTALS

107 E. STATE, OLYMPIA
357-4128

Cooper Point Journal

Issue No. 1

September 23, 1985

Vol. No. 14

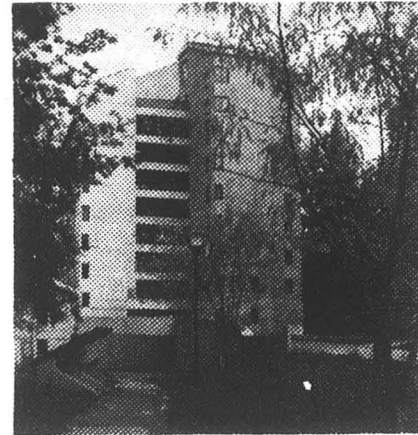


news

College packs 'em in and housing bears the brunt

by Polly Trout

Temper in the dorms are running rather hot. Housing has overbooked its occupancy by approximately 25 per cent, crowding extra bodies into the mods and 2-person studios, and leasing off-campus apartments for the overflow.



A-dorm

Student housing was originally designed for 578 people. Student managers have reduced occupancy (one person in a room originally designed for more) and EFL leases 36 beds for foreign students, leaving approximately 530 available openings. As of September 12, Housing had accepted 694 applicants, turning no one away. They were still accepting new applications. Sixty-four of those students are being housed in the Heritage Park Apartments.

Heritage Park is a five-building complex about five miles off campus, over by the courthouse on the bluff overlooking Capitol Lake. It was designed ten years ago as student-oriented housing. All units were built for four people, with four small bedrooms, two bathrooms, and one kitchen. Later, as occupancy declined, some units were remodelled to house two or three people. Evergreen has leased one of the five buildings, plus several additional units. The leased rooms are all in the older, four-person setup. Housing has hired an extra student manager, Rod Van Emelen, to live in Heritage. In addition, Heritage provides two managers, Marv and Sue Anderson.

The furniture in Heritage is sparse and piecemeal. The beds are metal framed and borrowed from CWU. The tables are from the dorms. The "rinky-dinky" chairs were borrowed from facilities. On the bright side

Heritage Park has only been leased by the college through Fall

the carpets have just been either washed or replaced, the appliances are brand new, there are hot tubs, saunas, a weight room and pool room, and it's a mere \$150 a month.

The major inconvenience to Heritage Park residents is the distance. Although it's only 10 minutes away by car, IT bus service requires going downtown and transferring, a 45 minute operation. Evergreen vans will run from downtown to Heritage every other run in the evenings. In addition, there will be four express shuttles that take only 7 minutes: 7:00, 7:30, and 8:00 a.m., and one at 5:00 p.m.

Despite the crush for space and time, Housing has made a sincere effort to match compatible habits, especially in the overcrowded units. 26 mods have five people instead of the usual four. 26 more extras are stuffed in the dorms, mostly in A's 2-person studios. Fortunately, Housing expects at least two dozen people to drop out immediately or not show. Linda Hohman, assistant housing director, expects all the extras in the dorms to have been dispersed to new, normal occupancy rooms by the end of the first week.

Things will be tougher for those living in the mods; Hohman speculates that they will remain crowded throughout fall quarter, if not longer, unless students find housing in town. Unfortunately, this may be extremely difficult; the enrollment flood is producing a real crush for housing throughout the area. Disgruntled mod-mates may find that they have nowhere else to go.

It is expected that overcrowding in Housing will remain a problem until new dorms are built. If funding comes through, the new dorms could be operational as early as the fall of



Linda Hohman, assistant director of housing Photo by Aaron Zeliger

"We need to prove to them that we need the money by providing sub-standard housing."

1986. A year from that date is a more likely estimate. Hohman admits that they have partially chosen to overcrowd the existing dorms to prove a need for new construction. "We need to prove to them that we need the money by providing substandard housing" she says.

Many dorm residents believe that Housing should have turned away applicants rather than to overcrowd. Hohman replies that that would discourage students from coming to Evergreen. She says that Housing

gave the applicants an opportunity to cancel their contract and get back the deposit when they found that the room would be overbooked. Apparently, new students aren't complaining much, but returning students, which make up one third of housing's residents, are making a fuss.

Some students are combatting the inconvenience by falsely registering roommates who plan to actually live off-campus, thus getting around the no-reduced-occupancy policy. "It's not fair for them to reduce my standard of living", says one. "They should have turned those students away."

Bad feelings are also flaring over the 36 beds allotted to EFL. Linda Hohman says, "It isn't so much the students that are complaining, because they see it as a real learning experience. But some parents have called up, pretty mad." She explains that the contract with EFL was drawn up several years ago. They have already reduced the number of EFL's beds from 50 to 36. Those students, who are not Evergreen students but come here as part of a year-long conference to study English, will be staying on the third and fourth floor of A dorm.

Martin given student affairs post, promotes governance

by Dave Peterson

When President Olander's reorganization plan was approved by the Board of Trustees, some new administrative positions were created. One of these was vice president for student affairs, a job given to Gail Martin, former dean of enrollment services.

Martin describes her job as "a position that is responsible for managing all of the units reporting to student services; for being part of the president's management team of the college, and with a specific responsibility to get students more involved in decision making at Evergreen. That's a big agenda item."

When asked how she expects the governance system will work, Martin said that for awhile it would be "uneven." Indeed, for the moment there really is no established system of governance at Evergreen. One of Martin's first jobs as the year begins is to charge a Disappearing Task Force (DTF) to look into the new problems of governance at the school.

At the time of the interview, Martin said she was aware of three options being discussed as possible directions for governance to take. "One is just an aspect of governance which would be to institute an information center staffed by students whose primary responsibility would be to make sure students are



Photo by Aaron Zeliger Gail Martin, vice president for student affairs

aware of what decision-making groups are meeting on campus, and how they might get involved.

"Another proposal is for a kind of representative student body to meet and deliberate on governance issues." This group would be made up of one student from each seminar on campus.

The third proposal is that the principles of student involvement in decision making be kept the same as they were last year, "but that the vice president for student affairs and/or a student funded organization would become brokers for how students might be better involved." Some examples would be that during orientation and registration Student Affairs would have a student participation drive with the goal of getting students interested in taking part in governance projects and signing them up for service on governance oriented bodies such as DTF's.

Another result of the reorganization is the Student Advising Center which would be comprised of Academic Advising, Co-Operative Education and External Credit. The director of the center would report to one of the academic deans. The advantage of this plan is that all these groups that are supposed to be interlinked would be located in the same area, saving students from traipsing about the campus for an afternoon to get something done.

Finally, Martin is the person responsible for facilitating solutions to problems students might have regarding governance. "I would envision being ultimately the accountable person for students in getting those problems resolved. That doesn't mean that I would solve them all myself, but I'm responsible for knowing how to get them solved and who can solve them for the student, and seeing that it happens in an expeditious manner. Sort of 'the buck stops here'."

"I would hope that students would, in the ethos of Evergreen, not go to the top everytime they had a problem, but that they would deal with the problem where it occurs, and only when they were not being responded to satisfactorily that they would come to me. I expect in most cases that the problems will be solved where they occur. That's the way it's supposed to be. They shouldn't end up in my office, but when they do I will see that things happen."

S and A spends your money for your fun

The Services and Activities Fees Review Board spends a lot of money at Evergreen, but this may be the last time you hear it called by that name. Most people just call it the S and A Board. You might want to keep an eye on it, though, because it's your money its members are passing out. If you are a full time student, they get \$70 of your Tuition and Fees payment every quarter. That's \$210 a year. In all, over a half million dollars in student fees are channeled through the S and A Board each year. That money is then used to provide services and activities for students, hence the name.

Center and the Third World Coalition groups (Ujamaa, Asian-Pacific Isle Coalition, MeCHA, the Northwest Indian Center and Third World Women.)



Michael Hall, Services and Activities director

Services and Activities funded services at Evergreen include the Bus System, the Bicycle Shop, Campus Childcare, Women's Health Services, the College Recreation Center, Thursday Night Films, KAOS Radio and this very newspaper you are reading. Student activities funded with S and A dollars include such diverse organizations as the Peace Center, Expressive Arts Network, Wilderness Center, Lesbian-Gay Resource Center, Parents Center, Evergreen Political Information

This is far from a complete list, however. More than 40 student budgets are funded through the S and A Board. Watch for a directory of all student services and activities that will be published in an October

issue of the Cooper Point Journal. The S and A Board is comprised of six students, one staff member and one faculty. They are appointed to the board for one year appointments by the S and A Coordinator, who is also a student. The board funds student budgets throughout the school year, but the major allocation process occurs during Spring Quarter.

If you are interested in becoming a part of the student governance process at Evergreen, the S and A Board is one of the principle opportunities available. Publications for the board are currently being accepted in the Student Activities Office (CAB 305) next to the radio station. If you don't want to sit on the board, but are still interested in how your student fees are spent, you are encouraged to attend S and A Board meetings. They happen every Wednesday in CAB 104. Meeting times will be announced in a later issue of the Cooper Point Journal, on fliers distributed around campus and in the Information Center.

Here are the people who staff the

Student Activities Office and are available to help you:

Helen Gilmore is the first person you'll meet when you arrive at CAB 305. Helen is the Student Activities receptionist and is also the person you will want to talk with about selling items in the CAB lobby and about producing an entertainment or cultural event. Helen is responsible for distributing the Production Clearance Form.

Annette Standifur, the Supplemental Events Coordinator, plans events for the student population and assists student producers along with Helen. Annette will be looking for a student to replace her when she graduates at the end of Fall Quarter.

Carol Costello is the S and A Board Coordinator. She promotes, schedules, and facilitates all S and A Board meetings, does research for the board and helps students develop funding proposals for submission to the board. Carol is currently seeking new board members, so if you would like to help allocate a half

Kathy Ybarra is the Student Activities Budget Coordinator. She is the person who handles much of the accounting in collaboration with

Sharlene Lugenbeel in the Business Office and processing of paperwork in the Student Activities Office. Kathy takes care of all the "Money moving" details every time the S and A Board makes a funding decision. He also helps students prepare budget proposals for the S and A Board.

Michael Hall is the Director of Student Activities. He hires students for positions in student run organizations, advises student group coordinators and the S and A Board, promotes student activities campus-wide, sits on numerous boards and committees representing student interests and manages many of the areas of the College Activities Building.

If you have an interest in Student Activities, please come visit us any weekday from 8 a.m. to 5 p.m. in CAB 305. If you are unable to make it in during those hours, call us at ext. 6220.

"Evergreen Hour" diversifies for alternative TV

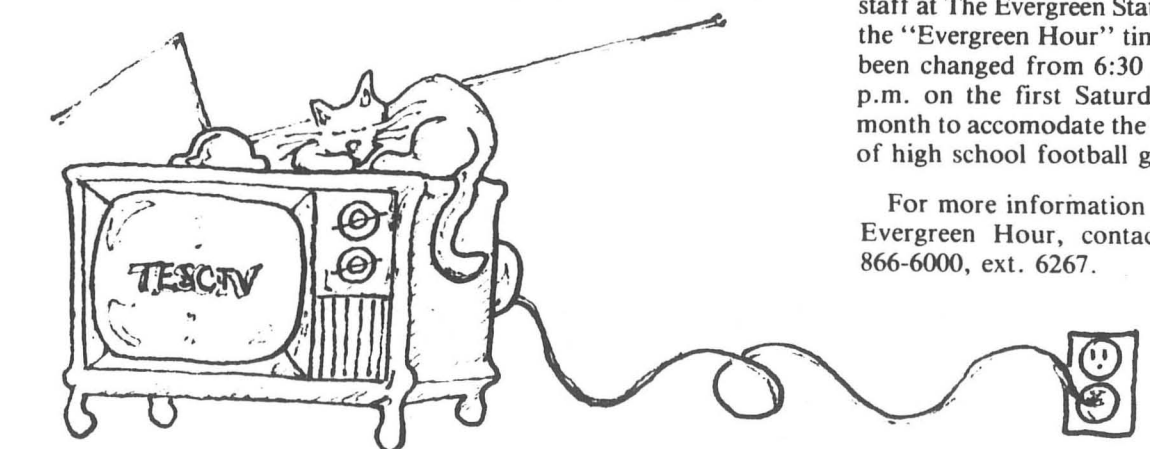
Preachers, towers, photographs, shorebirds and blues will be featured on "The Evergreen Hour," slated for 8 p.m. Saturday, Oct. 5 on KTPS-TV in Chehalis and Tacoma (Channel 12 in Olympia).

"We are diversifying," says Doug Cox, electronic media producer for The Evergreen State College. "Instead of exploring a single topic, each program will now have several sequences ranging in length from two to 30 minutes."

The first "Evergreen Hour" magazine will feature "God's Trom-

bones," a tribute to the Black American preacher; "The Towers Project," a documentary on the construction of two sculptures by Evergreen Faculty Artist Jean Mandeborg and her class; "Carolyn Hopkins, Evergreen Photographer," an exploration of Hopkins' works and ideas; "Shorebirds," a whimsical and beautiful trip to Bowerman Basin with Faculty Ornithologist Steven Herman; and "Blues," a visual and musical jazz film by Cox.

Produced by students, faculty and



staff at The Evergreen State College, the "Evergreen Hour" time-slot has been changed from 6:30 p.m. to 8 p.m. on the first Saturday of the month to accommodate the broadcast of high school football games.

For more information about the Evergreen Hour, contact Cox at 866-6000, ext. 6267.

Smithfield CAFE
OLYMPIA
212 W. 4th Ave. 786-1725 Hours: M-F 7am-8pm Sat. 9am-8pm Sun. 9am-8pm

Act now! Inquire: 110- ing Avenue, El Cajon, CA 92020.

PROMINENT BANKER WISHES TO HELP PUT 10,000 STUDENTS THROUGH COLLEGE. Guaranteed student loans for graduates. No payments until after graduation. Up to ten years to pay back. At just 8% annual percentage rate.* Payments as low as \$50 a month.

ATTENTION Seattle's best executive excellent administrative skills, oised, top salary required. Join he fun! 502 for details.

creative haircutting Center. Ourav

621-78- ARE YOU and achin WEDNESD 26 at the b welcome f HAVE YO: Barter C- QUF olo me

Let Washington Mutual help with a low cost student loan. Ask your school's financial aid office for an application and details or, call (206) 464-4767 for more information. You'll see it's everything we've advertised.

Washington Mutual
The friend of the family

Washington Mutual Savings Bank and its family of financial affiliates: Murphey Favre, Incorporated/Washington Mutual Service Corporation Member FDIC

*This rate does not necessarily apply to students with current loans.

WELCOME EVERGREEN STUDENTS ★

PETERSON'S Shop-Rite

Locally owned

Westside Shopping Center*
*Fresh Bakery Items available
Tanglewilde Shopping Center

Wide Selection of:
Fresh-Hot no preservative bakery items daily
Fratellis & Haagen Daz Ice Cream
Mexican and Oriental foods
Hansen's Natural Soda drinks
Five brands of yogurt

Bus Passes Available

8-9 Daily
10-7 Sundays

editorials



Photo by Lee Howard

Meet the Editor

by Lee Howard

There he stood in the dying rays of the day. He stared pensively as the full moon spread its silver rays through the thick Asian jungle, shaking the bats free from their festoons and waking all the magical Indian beings of twilight.

"I came to this jungle for peace, damn you!" His eyes were hidden by glasses as dark as his mood. "Let me be! You can read the stinking paper when I let it out! Piss off!" He begins his descent into the howling night.

A short interview, you say? Yes. Of course. Obviously. But it gives us a quick ray of light into the spiritual labyrinth that is Dave Peterson.

"May I please interview you, Mr Peterson?" I cry, as the shadows of the jungle close in about his towering, ominous frame.

He turns and hurls an icy cackle over his shoulder that curls my ear hairs and my myopic question hangs in the air like labrador snave.

On the plane home Dave opens up.

"Hey, do that somewhere else, Buddy!" The stewardess snaps and Dave casually re-does the sutures.

"Old badminton injury," Dave groans, "Don't wanna talk about it, okay?"

"Boffo," I agree. "Were you trained on a newspaper in high school?"

"Yeah, but I use the potty now like everyone else."

"Everyone? Come off it!" "Don't mention any names, he is the school president."

"So..." I grope for conversation. "Where'd you get those socks? I like 'em a lot."

"Where'd you learn to take an interview?"

"I'll ask the questions around here! I'm the reporter!" (He may be a legend, but he can start to wear on a guy after a while.) "Dave, there are those who say mankind is at a crossroads and you're the only beacon of light in a bleak universe. How do you respond?"

"Look!" Dave appears peeved "I'm just an honest Joe tryin' to do his best for America, and by cracky, I love her!"

Let me give you some insight into the deepening catacombs of im-

portant thought that compose this man.

Dave is from a booming megalopolis called Federal Way, Washington. Actually, a small town but, still a Soviet target due to the strategic placing of the Sea-Tac Mall.

I don't think it pained him deeply to leave Federal Way, but it did make him not want to go back. (I don't think I'm at all too sure if that doesn't make sense or not.)

[No it doesn't - Ed.] Well, sorry. [Too late to apologize - Ed.] Okay, can you leave me alone so I can get back to interviewing you? [Don't tell me what to do in MY PAPER, YOU ZIPPERHEAD! - Ed.]

Oh, so that's your game is it? Power? [Yes, POWER, and what of it? With my editorial skills I can make you say whatever I want. - Ed.]

Then later...I decided to...put the hot Lobster Neuburg down my pants.)

[Now you'd better straighten up and fly right or I'm going to put that in bold type and stick it in a quote box. - Ed.]

Alright, please don't do that to me again! Please. "Get on with your interview," he said suddenly. "I'm a busy man!" He was drawing red lines all over some typewritten pages, whilst chortling.

"Can I ask what all that is?" "Letters to the editor. I get my simpleminded thrills by cutting bits out and rearranging them on the page. No other reason than that. Childish pleasure."

His laugh was chilling. Absolutely refrigerated. "Mr. Peterson, there are those who call you a wisecracker. How do you respond?"

"Hey, those're probably the same folks who go around callin' the Pope a Catholic."

"Accurate?"

Silence. No response. He put his correcting pen down and was gazing back at the jungle that shrank below the plane. Call him a wisecracker, call him a wisecracker, call him what you will, you'll most likely be accurate. He's a complex piece of work. Even for an enigma.

Students urged to join in the governance process at TESC

by Trace DeHaven

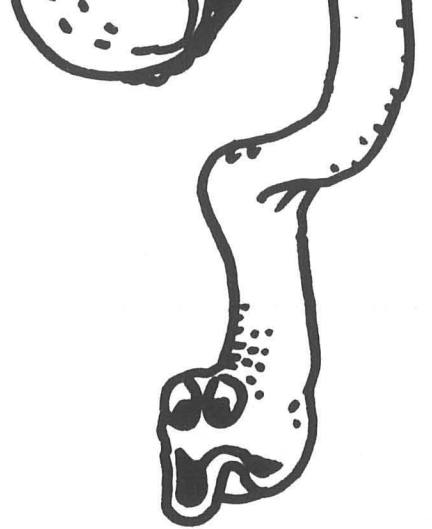
Students are finally finding a way to make their voices heard! Every Wednesday at 12:30 p.m. in CAB 104, concerned students are gathering to discuss campus issues which affect us all. We are now in the process of helping to select students who will serve as student representatives to a DTF (Disappearing Task Force) now convening to recommend a new form of governance for Evergreen. Your voice and suggestions are urgently needed!

Over the last few years, it has become evident that the present form of governance at Evergreen does not allow for sufficient student input. In response to frustration, students have been meeting to discuss governance and related issues. Over the last several months they have met and will continue to meet every Wednesday at 12:30 p.m. in CAB 104 to discuss issues of concern. These meetings are open to any and all Evergreen students who need a forum for their concerns.

Three students are needed to serve on the upcoming DTF on campus governance. President Joe Olander has voiced the campus-wide concern that a new form of governance is needed at Evergreen. Over the next four months, the DTF will meet with staff, faculty and students in open forum and among themselves. By the end of this year, they will make their recommendations to President Olander for a new form of governance.

Evergreen students are needed to serve on this panel. Candidates should meet the following criteria:

1. Candidates should be free of partisan interests. They should be interested in and be concerned with all aspects of the school and its various constituencies.



2. Candidates should have some prior experience with the kind of group decision-making which will be the heart of the DTF's work as they forum and among themselves.

3. Candidates must be able to make a significant time commitment. his will be five to eight hours

weekly, through the end of December.

4. Candidates must be willing and able to seek out student input from the larger Evergreen community. They must be representative of, and accountable to the student population. This includes weekly attendance of the student's weekly group, to keep students informed of the progress of the DTF.

Women and people of color are especially urged to apply. Those interested in participating, please submit a letter of application to the office of Gail Martin, vice president for student affairs, in LIB 1217. The deadline for applications is Monday, Sept. 23 at 4 p.m. tudents may also express their interest by attending the students' weekly group in CAB 104 at 12:30 p.m. Wednesday, Sept. 25. Please act quickly as time is very short. The selection process will be taken on by students from the weekly Wednesday group. Five students will be recommended to Gail Martin by Sept. 27, and from those, she will nominate three student representatives to sit on the governance DTF. or more information, contact Gail Martin at ext. 6296, LIB 1217.

For those not interested in applying for the DTF, help is urgently needed to help with the selection process. he student's weekly group will be meeting at 12:30 p.m. every Wednesday in CAB 104 on an on-going basis to discuss governance issues on campus. This is an open forum for any students seeking representation of their concerns.

Your guide to good living

by Dave Peterson

So there you were. You'd just gotten into the fair city of Olympia, with intentions of attending The Evergreen State College, when you suddenly asked yourself, "Hey, what do I really know about this place anyway?"

Luckily you came across this copy of the Cooper Point Journal and took it as your guide to living in this strange and exciting megalopolis. What relief you felt as you clutched it tightly and ran through the streets, no longer alone in the vast and sacred halls of acadamia.

Understandably, your thoughts are filled with concern over your academic future; what if I get poor grades, you ask, nervously glancing over your shoulder. Well that's one worry you can kiss goodbye. As you've probably been told (whether or not you understand it is a different matter), there are no grades at Evergreen. No, what we've got here are little dandies called evaluations. They go much farther than grades in that they tell your future employers (and teachers) just what it is that they're getting into by taking you on in some capacity. Evaluations tell the reader that, yes, you were the one that made light of Marxist theory on May Day and, even worse, you were the one that refused to use the word allegorical all year. Those are things that a letter grade can never express. On the other hand, having a teacher rave that you were their brightest student since Sophocles doesn't look bad in the records either. Not for you anyway.

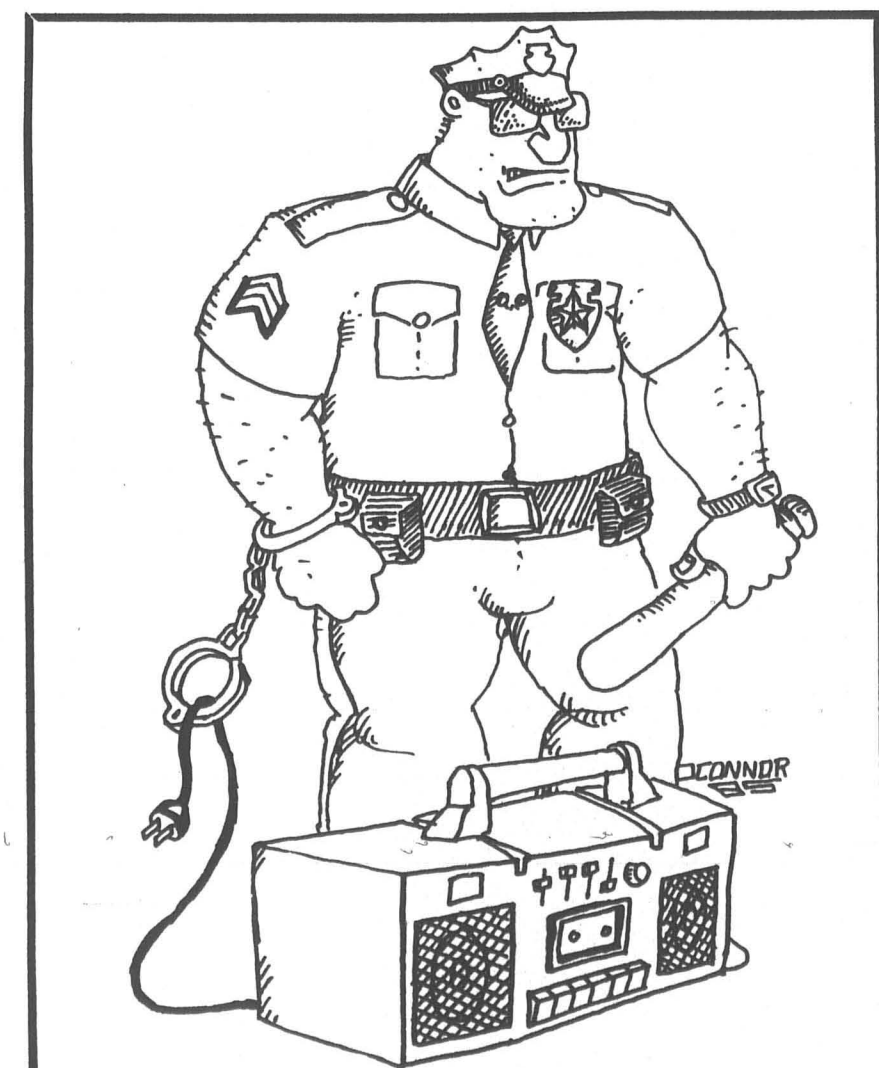
So you can see that evaluations are probably the way the CIA would handle things if they were to get into education. With one fear dispelled your load is lighter, but there's still something bothering you. Whatever will you major in?

Once again, fate has smiled on you. Evergreen has no majors, at least not as such. That means that there are no clear cut paths to a six-figure salary. As a matter of fact you might come out of here with a bachelor's in The Existential Qualities of Small Rocks. All very fine, but employable, hmmm, well. A good thing might be to visit the people in Student Advising. They can help you to study the things you want to and graduate employable. But it's a mistake to just listen to the experts. This is your

life afterall, and part of what Evergreen is about is making your own decisions. Take advantage of that.

As for this paper's part in the whole system, we will do our best to inform you of the events and decisions being made that effect the future of your education. And we'll do it with a grin. A sense of humor is something that you can expect in these pages.

Well then, that seems to be about it. Here's hoping we all have some Big Fun this year.

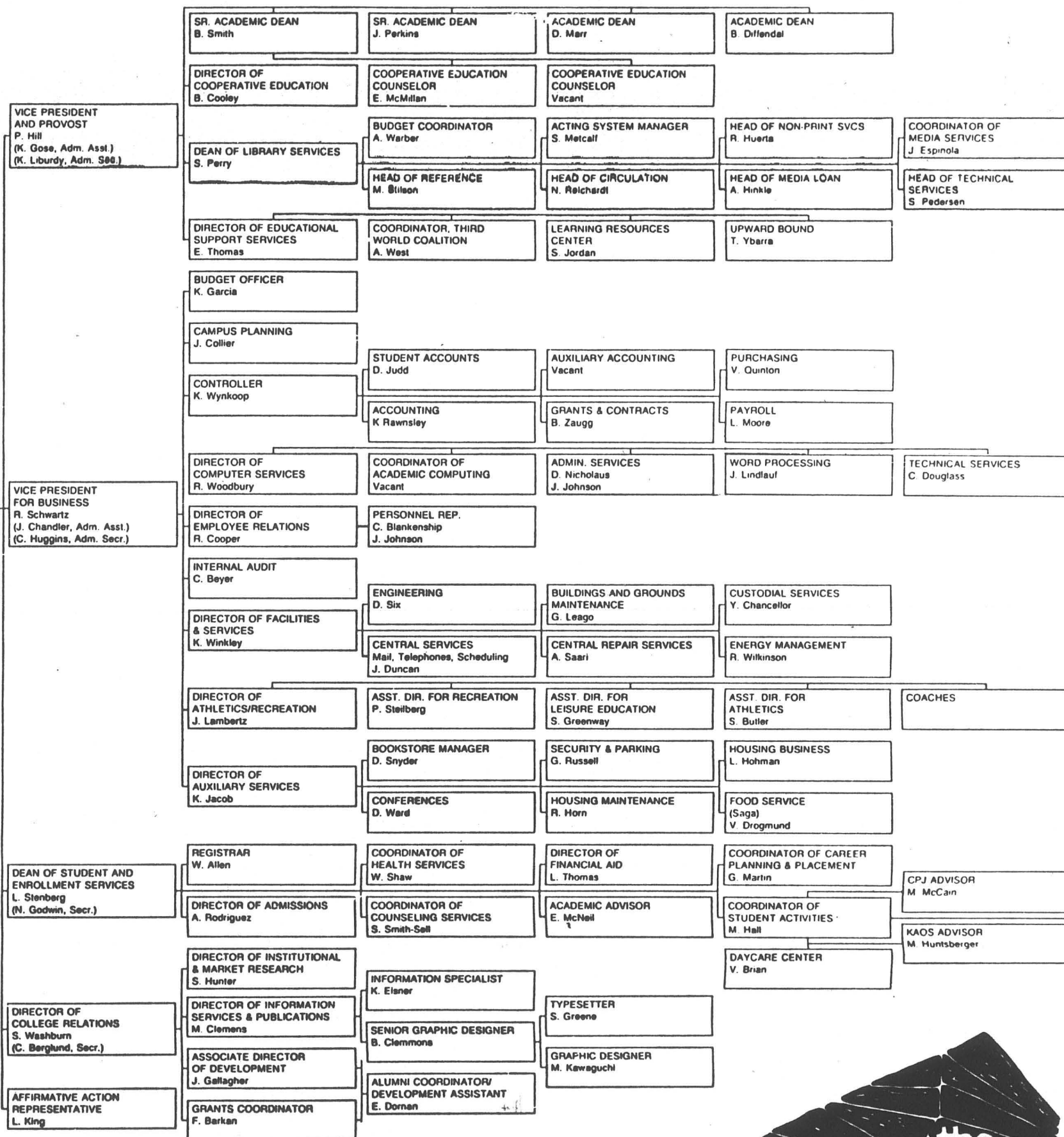
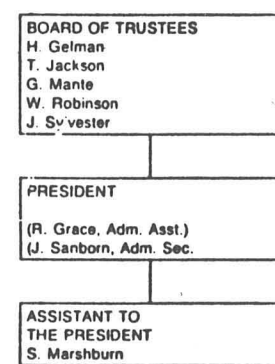


"Alright Mrs. Beasley, no more Lawrence Welk at 120 decibels."

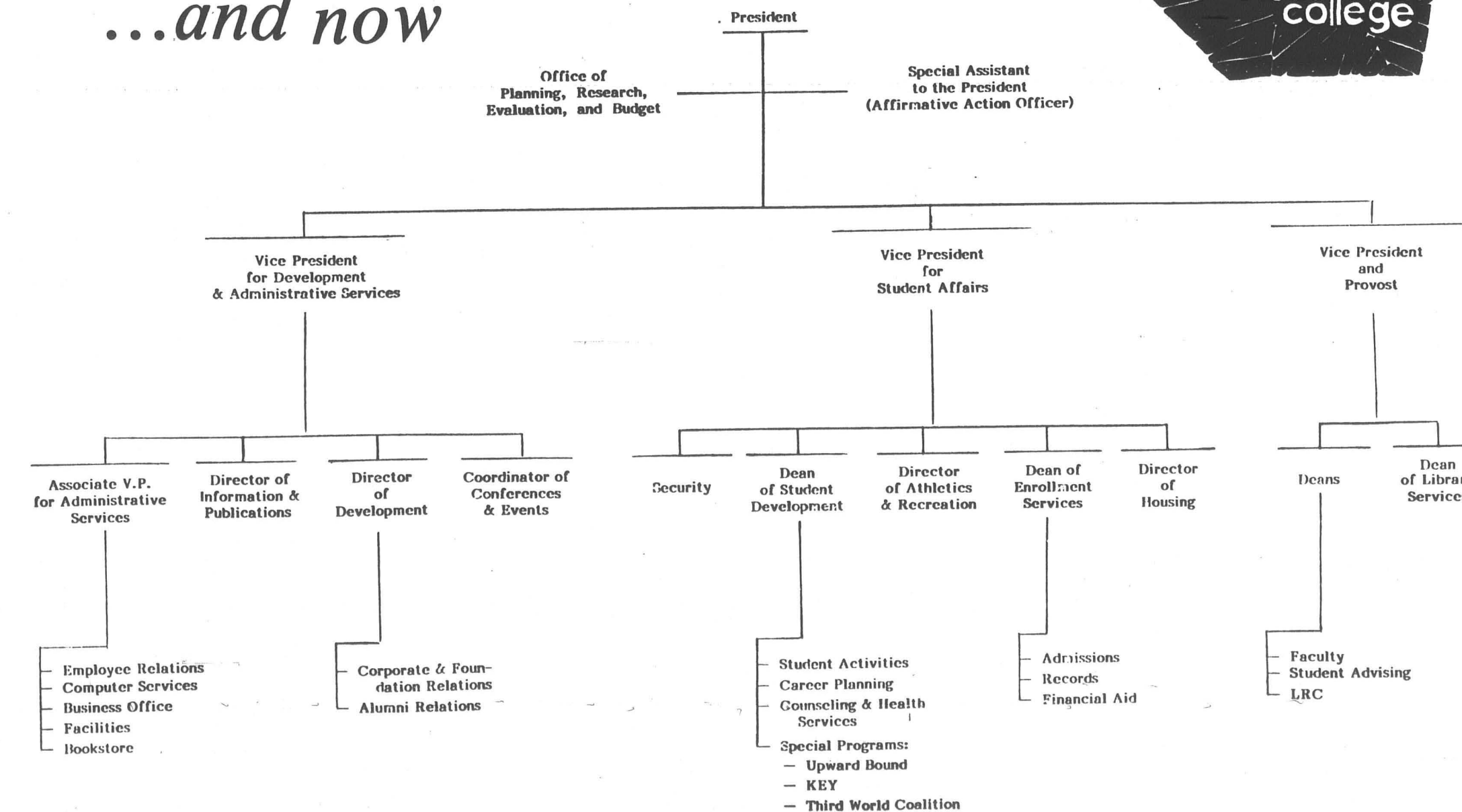
The Evergreen Administrative Picture then...

This summer, President Olander and the Board of Trustees engineered and enacted a new organizational system for the administration of the college. The new system is expected to save the college approximately \$40,000 a year over the old plan.

Here are the organizational charts, old and new, as they were made available to the CPJ. The top chart shows the system as it existed in the fall of 1984, the bottom as it currently stands. One final note; don't be misled by the apparent simplicity of the top chart versus the bottom. The top chart shows many positions farther down the line of command than the bottom one does.



...and now



evergreen & olympia

Noise raised as an issue in the Olympia area

Evergreen graduates were in the midst of their graduation party last summer when Thurston County Sheriff's deputies arrived and shut down the party.

Area residents had complained the music was too loud.

In response to similar complaints around Thurston County last year, county commissioners passed an ordinance making it illegal to produce noise that's audible in another dwelling unit.

The ordinance pertains particularly, but is not limited to, noise

emanating from radios, televisions, musical instruments, phonographs and loudspeakers. Violators can be fined \$500.

Citizens packed a meeting room at the county courthouse earlier this week to protest the ordinance.

A work session panel including Commissioner George Barner, representatives from the sheriff's department and the prosecutor's office and Mark Eckhart, an employee of Music 6000 listened as speakers one after another stood to oppose the noise ordinance.

"I've been playing music for 25 years," said Johnny Lewis, owner of Music 6000 in Lacey. "How many of you rock and rollers have stood by the speakers of a 16-piece brass band?"

Lewis told the panel that loud as it may be, there are no complaints when it's a brass band playing.

Eckhart said he took a decibel reading in the parking lot of Lewis' store to learn how high the traffic along Pacific Avenue would register on the indicator. Later, he had musicians inside the store crank up their electric guitars and took the reading

again. It registered only two decibels higher, he said.

A man who identified himself as the lead guitarist for the band Rough Toys, said as the world gets more crowded, people get more intolerant.

"Most of the local population works all day, but there is a night population that stays up late," he said. "Regardless of standing in the community, who is being infringed upon? If a dance is happening with 400 people, one or two can call in and affect the larger group. We feel it's not necessarily the noise tolerance, but a judgement that is being made on our lifestyle."

Another citizen said he lives in an apartment complex where he has to put up with the noises of the upstairs tenants walking around, the shower pipes rattling loudly at 6 a.m., babies crying and parents yelling at children.

He asked the panel if he should call the sheriff's department every time he hears those noises, as well as the times he hears other people's stereo.

"I have to get up very early, but I'm tolerant of those noises, and I accept the lifestyles of the other people."

Volunteers needed by Olympia groups

The Statewide Domestic Violence Hotline is looking for people interested in helping battered women and their families. Volunteers help people from all over Washington by providing crisis counseling, information and referrals. The skills you already have in listening to family members and friends are what you need to help our callers. Most of our volunteers work evenings or weekends from the comfort of their own home!

We are interested in involving people of all cultures, ages, all physical abilities, religious and sexual preferences and women who have in the past experienced abuse. A new volunteer training group will begin in late September. Call now for more information: 753-4621 (weekdays 9-5).

Puget Sound Healthcare Center is searching for volunteers to provide supportive services to its residents.

Some of the services volunteers provide are conducting tours, decorating the facility at special times such as Christmas, assisting with arts and crafts programs and visiting with residents on a one-to-one basis. Volunteers are also needed to staff the reception desk on weekends.

Want to make a difference in someone's life? Safeplace needs you! Thurston County's Rape Relief and Women's Shelter Services needs volunteers to do office work, fundraising, translating, counseling or advocacy. We will provide you with extensive training.

Safeplace is dedicated to stopping all forms of violence against women and children. This includes working against racism.

We especially invite women from all ethnic backgrounds to apply. The fall volunteer training begins October 6. Call Safeplace at 754-6300 for an application.

Let's get back to folk music. Tacoma is the home of one of the most important organizations for folk music in the Puget Sound area. Victory Music supports music in this area through many avenues. Every month Victory Music publishes a newsletter called "The Victory Music Folk and Jazz Review." This newsletter is available free at many locations in the Northwest. In Olympia, look for it at The Evergreen State College Bookstore, The Rainbow Restaurant or one of the music stores in the greater Olympia area.

Each month 8,000 copies are printed and distributed around the Puget Sound region. This 15-page newsletter has record and concert reviews and a two-page calendar listing live folk, jazz and dance music around the Northwest. The calendar is very complete and difficult to read, since it is packed with so much information. About 100 clubs are listed in the calendar. The newsletter also has sections on dance, Irish music, jazz, women's music and radio. Victory Music has an outreach program to get music into hospitals and nursing homes. Victory also sponsors two old-time country dances each month in the Tacoma area.

One of the most important services of Victory Music is the weekly open mike stage at Antique Sandwich, a restaurant at 5102 N. Pearl St. near Point Defiance Park in Tacoma. Each Tuesday, Victory features 15 open mike acts from this area. If you would like to perform for 10 minutes at this open mike, just sign in by 6:40 p.m. Tuesdays. The show starts at 7 p.m., and the nice thing about performing at the Antique Sandwich is that people sit quietly and listen to the music. This is not a noisy bar atmosphere; it is

more like a concert where people eat quietly and enjoy music, storytellers, comedians and other acts. Tune into KVTI-FM 90.9 in Tacoma for a live broadcast of the open mike each Tuesday.

Since we are talking about radio, we should not forget to mention the campus station, KAOS, FM 89.3 on the dial. The station has folk and ethnic programming from 6 a.m. to noon Monday through Friday. This non-commercial station has all kinds of music, so check it out.

Seattle Folklore Society has a monthly flyer which you can subscribe to for \$15 a year. The Seattle Folklore Society sponsors lots of wonderful music and dance events in the Seattle area throughout the year. They also offer workshops on various musical instruments similar to The Evergreen State College Leisure Education Program.

The Seattle Folklore Society helps to produce the famous Seattle FolkLife Festival. The festival is the biggest free folk festival in the world and should not be missed, since you are so close to it. It happens every year during Memorial Day weekend at the Seattle Center. The festival features 12 stages of continuous entertainment for four full days. About 2,000 volunteers make the festival happen every year, and about 50,000 people visit the festival each day. Mark it on your calendar for late May, 1986.

I have tried to give you some information about folk music in this region, but I have not attempted to cover everything. There are lots of things happening in the Northwest. Become involved. Here are some addresses of organizations I have mentioned in this article.

Applejam Folk Center
220 Union Ave. S.E.
Olympia, WA 98501

Olympia Old-Time Dance
P.O. Box 2822
Olympia, WA 98507

Victory Music
P.O. Box 7515
Bonney Lake, WA 98390

Seattle Folklore Society
6556 Palatine Ave. North
Seattle, WA 98103

Olympia Modern Jazz Society
Box 10192
Olympia, WA 98502

Washington State Folklife Council
Mail Stop TA-00-SE3156
Olympia, WA 98505

Folk music thrives in Pacific Northwest setting

by Jon Epstein

Folk music is alive and well in the Northwest. There are a number of organizations dedicated to the preservation of traditional music. The Applejam Folk Center is located at the Olympia YWCA, 220 Union Ave., in downtown Olympia. Applejam has gone through many changes during its 11-year history but continues to survive through the hard work of dedicated volunteers. This year, Applejam will be publishing a quarterly newsletter and sponsoring musical events throughout the year. You can get on their mailing list by writing to the address listed at the end of this article.

The "second Friday" Old-time Country Dance is another regular event in Olympia. It is now in its third year of providing square dancing with live bands and callers on the second Friday of each month. This kind of dancing seems to be getting more popular each year in the Puget Sound region. Each month a different band and caller sets up in the Olympia Ballroom, 116 E. Legion Way, for an exciting evening of dance. The type of dancing varies from Southern square dancing to New England Contras, to big circle dances and waltzes. All dances are taught on the spot with no previous experience necessary. Come down and flirt your brains out some evening. The October dance will feature the famous Seattle band, "Flash in the Pan," with caller Sherry Nevins. This happens at 8 p.m. Friday, Oct. 11 at the Olympia Ballroom, across from Sylvester Park downtown. Admission is \$3.50 with discounts for seniors and young people.

The Kingston Trio will perform at the Trails End Arena in Tumwater at 8 p.m. Friday, Sept. 27. Local folk musicians Kay and Dusty Rhodes will open the show. Ticket information is available at record stores around town. On Friday and Saturday, Sept. 27 and 28, local folk musician "Eppo" will perform at the Rainbow Restaurant, 4th Avenue and Columbia Street, downtown.

Eppo is one of the artists on the 1985 Evergreen State College Album project.

On Sunday, Sept. 29, you might want to check out the Harvest Fair at The Evergreen State College Organic Farm. There will be food, arts and crafts, games, tours of the farm, a pie contest and live entertainment from the Olympia community. Featured performers include a magic show by Evergreen's first graduate, Dr. Mystical, and musical entertainment by Kay and Dusty Rhodes, Eppo, Truck Mills, Tom Russell, C and M Violin Works, Generica Musica and the Chromatic Connection.

Let's get back to folk music. Tacoma is the home of one of the most important organizations for folk music in the Puget Sound area. Victory Music supports music in this area through many avenues. Every month Victory Music publishes a newsletter called "The Victory Music Folk and Jazz Review." This newsletter is available free at many locations in the Northwest. In Olympia, look for it at The Evergreen State College Bookstore, The Rainbow Restaurant or one of the music stores in the greater Olympia area.

Each month 8,000 copies are printed and distributed around the Puget Sound region. This 15-page newsletter has record and concert reviews and a two-page calendar listing live folk, jazz and dance music around the Northwest. The calendar is very complete and difficult to read, since it is packed with so much information. About 100 clubs are listed in the calendar. The newsletter also has sections on dance, Irish music, jazz, women's music and radio. Victory Music has an outreach program to get music into hospitals and nursing homes. Victory also sponsors two old-time country dances each month in the Tacoma area.

One of the most important services of Victory Music is the weekly open mike stage at Antique Sandwich, a restaurant at 5102 N. Pearl St. near Point Defiance Park in Tacoma. Each Tuesday, Victory features 15 open mike acts from this area. If you would like to perform for 10 minutes at this open mike, just sign in by 6:40 p.m. Tuesdays. The show starts at 7 p.m., and the nice thing about performing at the Antique Sandwich is that people sit quietly and listen to the music. This is not a noisy bar atmosphere; it is

more like a concert where people eat quietly and enjoy music, storytellers, comedians and other acts. Tune into KVTI-FM 90.9 in Tacoma for a live broadcast of the open mike each Tuesday.

Since we are talking about radio, we should not forget to mention the campus station, KAOS, FM 89.3 on the dial. The station has folk and ethnic programming from 6 a.m. to noon Monday through Friday. This non-commercial station has all kinds of music, so check it out.

Seattle Folklore Society has a monthly flyer which you can subscribe to for \$15 a year. The Seattle Folklore Society sponsors lots of wonderful music and dance events in the Seattle area throughout the year. They also offer workshops on various musical instruments similar to The Evergreen State College Leisure Education Program.

The Seattle Folklore Society helps to produce the famous Seattle FolkLife Festival. The festival is the biggest free folk festival in the world and should not be missed, since you are so close to it. It happens every year during Memorial Day weekend at the Seattle Center. The festival features 12 stages of continuous entertainment for four full days. About 2,000 volunteers make the festival happen every year, and about 50,000 people visit the festival each day. Mark it on your calendar for late May, 1986.

I have tried to give you some information about folk music in this region, but I have not attempted to cover everything. There are lots of things happening in the Northwest. Become involved. Here are some addresses of organizations I have mentioned in this article.

Applejam Folk Center
220 Union Ave. S.E.
Olympia, WA 98501

Olympia Old-Time Dance
P.O. Box 2822
Olympia, WA 98507

Victory Music
P.O. Box 7515
Bonney Lake, WA 98390

Seattle Folklore Society
6556 Palatine Ave. North
Seattle, WA 98103

Olympia Modern Jazz Society
Box 10192
Olympia, WA 98502

Washington State Folklife Council
Mail Stop TA-00-SE3156
Olympia, WA 98505



Photo by Aaron Zeliger

Olympia area has many alternative foods

by Bob Reed and Dave Peterson

The main roads leading to Evergreen are dotted with traditional American food suppliers such as McDonalds, Safeway, and Burger King. A bit farther off the beaten path are two important resources for the Evergreen community. The Evergreen Organic Farm and the Olympia Food Co-Op have been instrumental in supplying the community with healthy, quality food and giving students the necessary tools to grow their own organic vegetables.

The Olympia Food Co-Op is located at 921 N. Rogers Street, about three miles from campus. It is largely operated by volunteers who receive a discount on their food purchases. The Co-Op is similar to a small country grocery store, with a few important differences. It carries foods that are generally less processed and lower in salt, sugar and fat than many of the foods in other grocery stores. The Co-Op sells a large number of organic products that have been grown without chemical pesticides or fertilizers. The Co-Op works with local farmers and gives personal attention to shoppers by researching products, placing special orders and listing ingredients.

The Evergreen Organic Farm is situated on 13 beautiful acres at the end of a quarter-mile walk through the woods west of campus. The farm is located at the site of an old homestead that had been active prior to the development of the college. Students found the area during the first year of the college and decided they wanted to study organic agriculture there. The farmhouse was designed by students and built with lumber milled on site from trees that were cleared to make room for farm plots. According to faculty member Mike Beug, there have been students studying agriculture there ever since. Beug currently teaches the "Ecological Agriculture" program with Pat Labine. Students in that program study the crisis in American agriculture, Third World agriculture and work in the farm's gardens twice a week.

Susan Moser, who took the farm program two years ago, is the farm's manager and caretaker. She feels that one of the most important purposes the farm serves is to show people that small gardens are a practical food source.

"The emphasis here is to teach people how to do back yard gardening, and also for people who've already realized they like to garden, to get a little more sophisticated level of some small scale agriculture."

According to Moser there will be about 35 students from the "Ecological Agriculture" program working down on the farm during fall quarter. She's looking forward to the improvements the new students will make. The farm is already an upswing thanks to the efforts of Moser and others and it seems as if the administration has gotten behind the farm and is helping in its rejuvenation. "It's red tape that makes this place run," says Moser.

The farm is partially self supported by sales of vegetables and eggs on campus and to the Corner. State law prohibits selling elsewhere, as it would be in competition with local farmers who are not state supported and are working for their livelihood. Moser stresses that selling is not what the farm is really about anyway; it's a learning experience, a classroom of sorts. She does comment however that "what makes most money in the middle class is flowers."

The farm uses the technique of permaculture whenever possible, which means leaving the land as undisturbed as possible allowing it to develop its own ecosystem.

Students who are not part of the academic program can still get involved in the farm. There are about 45 plots of land that are rented quarterly for \$10 to \$15 per quarter. The price includes access to farm tools, water and advice. Students interested in growing their own food are encouraged to look into this program. An excellent opportunity to see the farm is the Harvest Fair on September 29. There will be food, entertainment, tours and fun in general.

"There's a lot of emotional appeal to this place," says Moser. "It's really fun for people who are suburbanites to be able to go and see those goofy ducks. People are welcome to come down here and visit and walk through here. It's all open. Some people wonder if they can go in there and talk to those chickens and they definitely can, just close the gates when they get finished."



Photo by Dave Peterson

Fairgrounds become market

The Thurston County Fairgrounds used to be alive with the sights and sounds of family fun for only a few short weeks out of the year. Not anymore...thanks to the efforts of Fairground officials and a pair of entrepreneurs who've brought life to the fairgrounds every weekend since June with something called the Thurston County Public Market/Swap Meet. With a combination of antiques, farm produce,

arts and crafts, and the treasures n' trash from garages and attics from every corner of the county, promoters Jim Lucas and Don Hellum have managed to attract buyers and sellers with a country fair-like atmosphere reminiscent of the "good ole days".

With 10 existing structures for undercover display, ample parking and picnic areas, plus a concession

stand and newly built gazebo, Lucas sees an even brighter future for the already successful weekend event. Both Lucas and Hellum cite consistency and cooperative management practices for the success of the family oriented event.

"We continue to add special attractions for adults and children alike and a little entertainment here and there, and we plan to do more to strengthen the county fair atmosphere which has helped to establish this event as something for the entire family," says Hellum.

Both indoor and outdoor vendors are reporting a brisk trade as buyers come looking for the usual and the unusual. On any given weekend, according to Lucas, buyers can find WW I or II canteens, helmets and ammo boxes, brass beds, antiques, dressers, appliances, hats, tools, wooden toys, balloons, paintings, fruits and vegetables, dolls, and the gleanings from private homes and garages, some of which even the seller can't identify.

Hellum and Lucas are confident that the advantages of both indoor and outdoor spaces for vendors, the convenient location on Carpenter Road in Lacey, and the crowds that the event has already drawn will one day mean the use of every building at the fairgrounds. "We're getting there!" says Hellum.

For more information contact the office at the fairgrounds at 491-1669.

step up to

Jimmas

pizza
renown

reservations accepted open 7 days a week

120 N. Pearl
Olympia, WA
943-9849

\$1.25 pitchers of Oly on Mondays

we also have orders to go

The Great Escape!

TUB 'N RUB

\$15.00

Our Tub 'N Rub is still the best deal in town! Call for your appointment for 1/2 hour therapeutic massage. The cost is only \$15.00 and the offer's good every day between 11:00 a.m. and 5:00 p.m. Treat yourself to THE GREAT ESCAPE!

TOWN TUBS

115 East Olympia Ave. Olympia, WA 98501 (206) 943-2200

Gift Certificates Available

HOUSE OF ROSES

Corsages
Presentation Bouquets
Plants
Gifts
Fresh Flowers
Over 300 varieties of balloons

American Express. Diners Club. Carte Blanche. Visa and Mastercard orders accepted by phone

1821 Harrison Avenue
Olympia, WA 98502
754-3949

Delivery Available

The O.L.T./O.M.E. CONNECTION AT EVERGREEN

Are you interested in Video Production for Theater?

A student initiative is underway providing a hands-on, experiential framework for persons involved in video productions. Through the efforts of fellow students, interested persons can have first-hand experience in three phases of video production for theatrical performances in the community: pre-production planning, recording session and post-production work, including editing. This effort will include camera operation, lighting design, sound recording and technical co-ordinating. Work is now underway with another crew forming for the new season.

We are now looking for enthusiastic individuals with a commitment to creativity and quality. The program is designed to expand. Come put your skills to use. Contact the Olympia Media Exchange office on campus, Room LIB 3226, Extension 6001. Leave your name, phone number and area of interest.

olympia community school

- *K-3rd grade
- *private nonsectarian alternative school
- *10:1 student/teacher ratio
- *wooded beachfront location
- *sliding scale tuition

357-4503
866-8047

A Creative Learning Experience
4346 Sunset Beach Dr. NW

Leisure Ed offers classes

by Debbie Lutz

Do you want to know what's happening during leisure hours at Evergreen? Become informed! You're invited to the Leisure Education Orientation Evening on Wednesday, September 25, from 6:30-8:30 p.m., on the fourth floor of the Evans Library building in room 4300. Workshop instructors will be available to answer questions,

display materials and samples of their works, and demonstrate their skills. While you're learning more about the workshops offered for fall, you can sip and munch with friends to song and dance performances happening throughout the evening. Registrations will be accepted. Don't miss this opportunity to share a good time. Fall quarter leisure workshops cover a broad spectrum of offering;

85 in all, designed to challenge your mind and body. If you want to recreate with others who share your interests, you might try: sailing, fly fishing, rock climbing, volleyball, guitar basics, banjo, radio broadcasting, brewing beer, story telling, making a futon, aerobics, dance, martial arts, weaving, folk art painting, drawing, as well as a wide variety of aquatics classes. The purpose of these workshops is to give participants an opportunity to explore many different recreational areas at an affordable price. Workshops are given for enrichment, not for academic credit. Costs range from \$5 to \$85.

Registration begins on campus Monday, September 23, at 8:00 a.m., and ends Friday, October 11, at 5 p.m. Classes begin Monday, October 7, and continue for eight weeks through the week of November 25, unless otherwise stated.

For further information and a complete brochure listing call 866-600, ext. 6530.



Photo by Aaron Zelig

Your City Government

CITY COUNCIL
 David A. Skramstad Mayor
 Pete Kettle Deputy Mayor
 Joan Barnes Kelly
 Mary Stuart Lutz
 Gil Carbone
 Holly Gadshaw
 Bill Daley

CITY MANAGER
 Robert W. Murray

DIRECTORY

Administrative Services Department	753-8325
City Attorney	753-8419
Prosecuting Attorney	753-8285
Community Development	753-8198
Emergency—Medic—Fire—Police	911
Fire Department	753-8348
Garbage Department	753-8396
Municipal Court	753-8312
Parks and Recreation Department	753-8380
Planning Department	786-5480
Police Department	753-8300
Public Works Department	753-8314
Utility Billing	753-8340
Energy Outreach Center	753-8340
Intercity Transit	943-4595
Main Street Program	753-8107
Olympia Downtown Development Association	753-8183
Thurston County Visitors and Convention Bureau	357-3370
The Washington Center	753-8585

BEN MOORE'S

★ Introductory 10% Discount ★
 (present this ad and show student I.D.)
 Expires Sept. 28th

BAR HAPPY HOURS 3 — 6
 Well drinks — \$.75
 22 IMPORTS
 and a selection of
 DOMESTIC BEERS
 Extensive Wine List
 Hales Pale Ale / on tap
 (from Washington's Micro Brewery)

Offering FULL MENU service
 including regional specialties
 fresh seafood, steaks, pasta
 and the best burgers in town.
 Delicious Fresh Geoduck Steaks
 available lunch and dinner

112 W. 4th Hours: Mon. thru Sat. 9:am—10pm
 Uptown Olympia 357-7527 Closed Sunday

BEN MOORE'S
 Cafe & Bar

Starbucks Coffee Exclusively — \$.45 a cup

HEAVEN IS A \$3.99 SMORGAS-BORD.

Now, from Sunday through Thursday, between 5 and 8, we'll give you all the heavenly pizza you can eat, for just \$3.99. And that includes our out-of-this-world salad bar.

So fly into Haven soon. And see your wildest pizza dreams fulfilled.



Olympia 270 Capital Mall 754-3711
 Lacey 94 South Sound Center 491-2311

CRYSTALS • BOOKS • MINERAL SPECIMENS • JEWELRY
 CRYSTAL SPHERES • COLLECTOR PIECES • HEALING TOOLS

Earth Magic

205 E. 4th
 Olympia, Wa. 98501

(206) 754-0357

WHOLESALE & RETAIL

10 percent discount with this coupon
 Offer good 'til Oct. 4, 1985

KAOS teaches community and alternative radio

by Michael Huntsberger

COURSE DESCRIPTION: COMMUNITY RADIO 101; offered on 89.3 FM
SCHEDULE: 6 a.m. to 2 a.m. weekdays, 7 a.m. to 4 a.m. weekends.

PREREQUISITES: interest in music and the world in general.

INSTRUCTORS: 150 dedicated volunteer program producers.

COURSE ACRONYM: KAOS.

Located right here at Evergreen is a non-commercial, public access radio station - KAOS Community Radio, 89.3 FM. KAOS is one of about a hundred community stations in the U.S. Community stations are locally owned and operated, are open to the public on all levels of participation and provide programming services which are not found on other radio stations.

KAOS PROGRAMMING IS UNIQUE KAOS offers folk music, jazz, classical, blues, Latin, African, Japanese, Chinese, Hawaiian, progressive, new age, new wave, no wave, punk, post punk, non-punk, new music, noise music, non-music - if it's on a disc, we play it.

There's more than music in the KAOS schedule. Every weekday, we offer a half hour public affairs program. For example, beginning Monday, Sept. 23, we'll have a fascinating three-part documentary, "Women of the New Right," which will air three consecutive evenings beginning at 9 p.m.

The "KAOS Alternative News" follows at 9:30 p.m. KAOS offers an hour of story-telling, poetry and prose during our "Spoken Word Hour." And we regularly offer program specials: Halloween night, Oct. 31, you'll hear "The Mist" by Stephan King. And coming soon to KAOS, "The Bob and Ray Show;" "Ronald Reagan and the Prophecy of Armageddon;" and next spring, an expanded "Alive in Olympia" variety series with a live audience.

KAOS programming is made even more distinctive by our music policy.

The priority at KAOS is on independently owned and operated record companies, which hold only 5 percent of the music market. That 5 percent is divided by thousands of small labels. While every other station offers Van Halen, Prince, Sheena E., Springsteen and the Scorpions, on the "big seven" labels (CBS, EMI, RCA, Warner Brothers, Polygram, MCA and ABC), KAOS presents artists such as Black Flag, Mission of Burma, Ingram Marshall, Doc Watson and Jeff Berlin, on labels like Passport, Shanachie, Flying Fish and Palo Alto Jazz. Yes, it takes some getting used to, but we assure you that KAOS offers programming unique to western Washington. KAOS has scooped more than a few artists, including George Winston, George Thoroughgood and X. KAOS fills gaping holes in the listening menu.

KAOS also produces special events. In the month of October, we'll present our fourth annual Gala Halloween Masquerade Ball, Thursday, Oct. 31 in the CAB. The show is tentatively headlined by The Walkabouts, from Seattle. The Halloween dance is traditionally a blow-out, with free refreshments, fire jugglers, a costume contest and experimental video screenings.

In November, KAOS will present an evening of music with Michael Tomlinson and Eric Tingstad. Tomlinson is a Seattle singer-songwriter. Tingstad plays acoustic guitar in the eclectic style known as "new acoustic music." The program will be at 8 p.m. Saturday, Nov. 16 in the Evergreen Recital Hall. Tickets are \$4 for students and KAOS subscribers and \$6 for the general public.

You can keep track of all KAOS activities by reading our monthly Program Guide. The guide lists program highlights, special events and features on programs and producers. The Guide is mailed directly to all KAOS subscribers or you can stop by the station on the third floor of the CAB, and pick up one for free.

KAOS IS PUBLIC ACCESS. Anyone - not just students, but any person with interest - can become involved with the station. Volunteers produce the programs, newscasts and special features. Volunteers run the music library. Volunteers govern the station through the Communications Board, which also oversees the Cooper Point Journal. KAOS has a small paid part-time staff who will provide you with the necessary training to become involved in community radio. Opportunities exist in reporting, writing, graphics, event production and a host of other activities. About half of our volunteers are students. The rest are volunteers from the greater community - a senior citizen from Tacoma, Chicano state employees, an Intercity Transit bus driver, a Rajneesh follower, a nationally published author, an Evergreen faculty member, some local high school students. Like our programming, our staff is diverse.

HOW TO GET INVOLVED Individual radio training is offered free of charge. You will be taken through all the elements of producing an entertainment program, including a supervised on-air shift. After passing a proficiency test, you'll be issued an FCC Third Class restricted permit. If you desire, you can continue your training with news writing and reporting, radio production or any number of skills. Contact the KAOS Volunteer Coordinator at 866-6822 or stop by our offices for more information.

If you'd like a more comprehensive introduction to community broadcasting, you can enroll in KAOS' Leisure Education course, "Radio for Everyone." The class is offered for six to eight weeks,

meeting Tuesday evening from 7 to 9 p.m. at the KAOS studios. The course costs only \$10, which includes about 100 pages of printed material.

Registration for "Radio for Everyone" is available through the Leisure Education office in the Campus Recreation Center. Call KAOS for more information about the class or call 866-6000, ext. 6350 to register.

If you're interested in station management and governance, you're invited to attend weekly meetings of KAOS' management staff, Monday at noon in the KAOS offices. There are also openings for members of the



the KAOS general manager and program director and developing policies and long-range plans for the station. You can get more information about the Communications Board at the Student Activities Office, CAB 305.

THE BEST WAY TO BECOME INVOLVED IN KAOS IS TO LISTEN. We're always here - weekends, holidays, early early in the morning or late late at night. KAOS is a unique resource that exists for your enjoyment, so exploit us, please. Turn it on and turn it up: 89.3 - KAOS COMMUNITY RADIO.

Communications Board. The Board meets monthly, monitoring the KAOS budget, hiring and evaluating

KAOS 89.3 fm

PROGRAM SCHEDULE

	Su	M	Tu	W	Th	F	Sa	
6 am								
7	CLASSICAL	KAOS VARIETY MORNING a mixed bag of light morning music, deep-brewed with news headlines, weather, special guests, and KAOS' unique morning personalities						NEW AGE MUSIC
8								
9								
10								
11	GOLDEN OLDIES	FOLK AND ETHNIC MUSIC bluegrass, country, celtic and music from other cultures						WOMEN'S MUSIC
12		THE SPOKEN WORD HOUR						
1 pm								
2	HANDS ON THE DIAL	C L A S S I C A L						EL MENSAJE DEL AIRE broadcast in Spanish
3	SOUND TRACK CINEMA	J A Z Z dixieland, swing, bebop, progressive and the avant-garde						BLUES
4		KAOS VARIETY EVENING Texas swing, jazz, Latin, bluegrass, Cajun - all great programs + occasional specials like Trivia and Radio Theatre						REGGAE
5	BLUES	COMMUNITY AFFAIRS KAOS ALTERNATIVE NEWS						
6		R O C K including the famous Friday funketeria						GOLDEN OLDIES
7		L A T E N I G H T W H A T E V E R						

Community Radio Olympia, WA.

Monthly Pass Only \$14⁰⁰

Available in TESC Bookstore

Intercity Transit

For Route/Schedule Information Call 786-1881

ALL WAYS TRAVEL SERVICE, INC.

Always

HARRISON & DIVISION
 OLYMPIA, WASHINGTON

AMERICAN SOCIETY OF TRAVEL AGENTS

943-8700

School offers kids a choice apart from public education

by Rob Knapp

If I want to play on the Evergreen beach between classes, I need to spend twenty minutes getting there, along Overhulse Road from ASH or down the path that starts behind the dorms. If I'm really impatient, I can jog or bike. If I were one of the teachers or children at the Olympia Community School, I would already be there.

Both the forest path and the paved road lead to the Geoduck House, perched in a clearing just above the beach, and there the school, called OCS for short, will be in session every school day from now to June. The children at OCS will spend the year doing what five- to eight-year-olds do in school: learning to read, write and do math; making "best friends" with each other; listening to stories in circles, running and shouting at recess; growing up in important ways. Unlike most students their age, they will be doing these things in an open classroom in which students of different ages are encouraged to learn together, they will frequently be out making use of the resources and activities of the Olympia area and they will be working actively and regularly in the arts and on the school's computers. Each week they will have swimming lessons, as well.

Ruthie Seidner, the school's director and lead teacher, trained at Goddard College in Vermont, and her two colleagues, Gloria Payne and Sioux Feldman, are both Evergreen graduates who completed their teacher training at The Little School in Bellevue. They will be joined this year by another Goddardite, Sally Bergquist, who will do her student teaching with them.

The school began in 1973 as Olympia's only nonsectarian alternative to the public schools for children in kindergarten through second grade (ages 5 through 8). The Olympia area contains six or seven private schools affiliated with local churches or actually run by them. Only in the last year have a Waldorf school and a half-day Unitarian Kindergarten increased the number of nonsectarian alternatives. As one would expect, the great majority of Olympia's five- to eight-year olds attend the public system; Cooper Point is served by Garfield, McLane, and L.P. Brown elementary schools.

Olympia Community School always emphasized a low student-teacher ratio. With three full-time teachers and an enrollment target of 24 students - for a ratio of eight to one - the student-teacher proportions compare very favorably with the 26 to 1 ratio of the public elementary

schools. The point of the school's low ratio, of course, is that it allows for a great deal of individualized interaction between students, teachers and parents. Olympia Community School tries to treat each child as a unique individual, learning and developing both academically and emotionally. The school's brochure says, "Our special concerns are developing a positive self-image for each child, the cooperative resolution of conflict, exemplifying personal and cultural diversity and creating an environment that does not promote sexual bias."

Between them, Ruthie Seidner, Gloria Payne and Sioux Feldman teach all the subjects necessary for a child to go on to public school. Ruthie stands out to the children, for the repertoire of songs she teaches and for acting out the characters in Dickens' "Christmas Carol." Gloria's past experience includes guiding white-water raft trips and flying light planes, while Sioux spent most of last year getting a rural school Eastern Washington underway.

The school is not officially part of Evergreen. It is a rent-paying tenant, complete with detailed lease, and the rent is the second biggest item in the

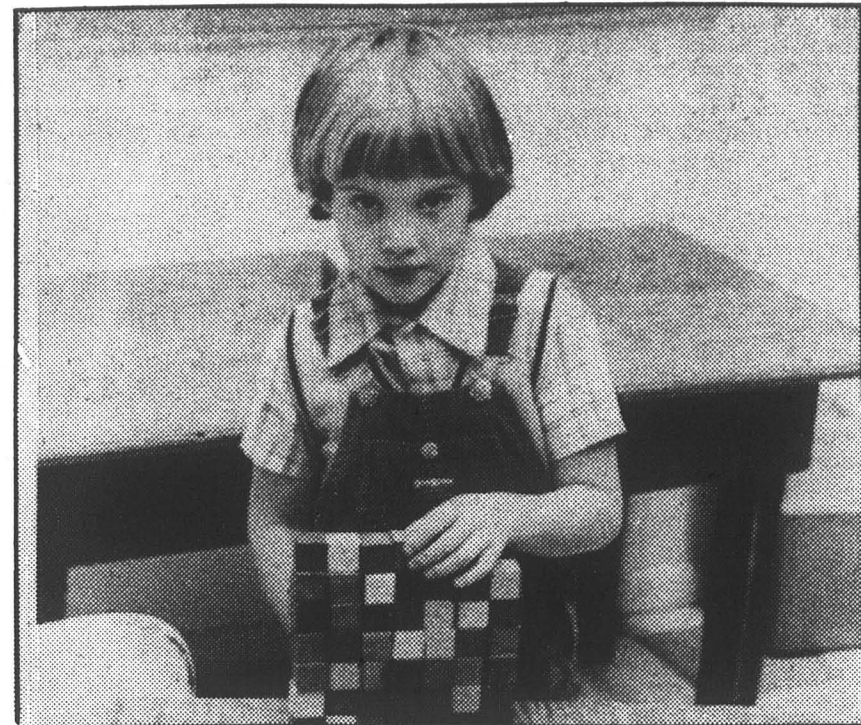


Photo by Aaron Zeliger

school's shoestring budget after teachers' salaries. Expenses are met out of tuition, which is on a sliding scale based on family income and ranges from \$140 to \$220 per month.

Current families are spread fairly evenly from lowest to highest along this scale. Parents also help with maintenance, field trip driving and other tasks where effort can substitute for money. Those seeking more information should contact the teachers at the Geoduck House (866-8047) or parent Kathy Monroe at 357-4503.

Last year, Olympia Community School's first on the Evergreen Campus, was the beginning of a friendly, mutually supportive relationship,

which all those involved hope will be a lasting one. Evergreen interns have been working at Olympia Community School each year since it began and find it even easier to do so now; the new woodwork and fresh paint on the Geoduck House have marked a revival of active use of this beautifully located campus structure; some Evergreen parents have already chosen OCS's alternative for their children; next year the school hopes to add third grade teaching, as well.

RAUDENBUSH MOTOR SUPPLY

WAGNER Sealed Beams

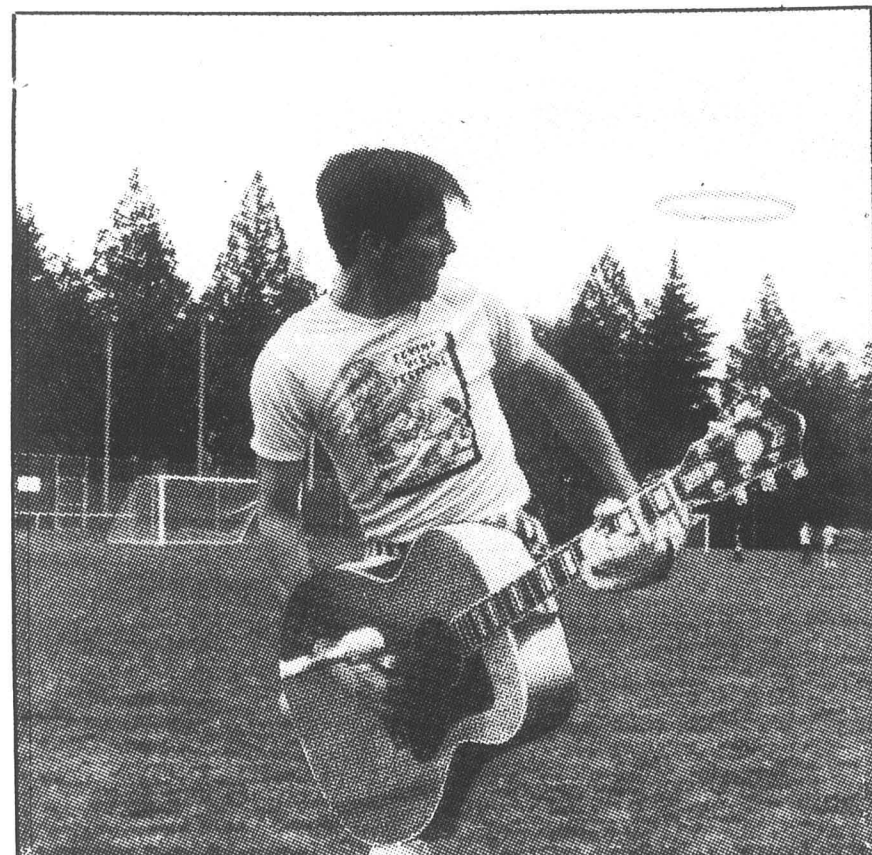
Raudenbush Puts The Brakes On Inflation And Lights Up Your Life With Wagner Lighting And Brake Products!

STOP TROUBLE IN ITS TRACKS WITH WAGNER BRAKE PARTS

Wagner has a full line of quality brake parts, fluid, and lighting products, for all your needs. Wagner Division, McGraw-Hill Company

412 S. Cherry 943-3650
Open 7 days a week

Learn music with Leisure Education



This fall Leisure Education offers beginning classes on various musical instruments. All classes meet once a week during the evening hours. They are an inexpensive way to get started on an instrument.

Guitar Basics is for those who want to play the most popular instrument in America. Over two million guitars are sold in this country every year. This class is for people who have never played the guitar and those who play a few chords but lack a solid foundation on which to build. This class will cover tuning, music theory, basic flat-pick and finger-style technique.

Bluegrass Banjo offers instruction on the 5-string banjo, one of the few string instruments that originated in America. This instrument was developed in the Southeast and was influenced by similar instruments that came to the United States with

the Africans before the Civil War. There are many different styles of playing the 5-string banjo and this class will offer instruction in the finger-pick style known as "Scruggs" or "Bluegrass" style. This style of banjo playing became popular when Earl Scruggs joined Bill Monroe's band and performed with him during their Grand Ole Opry performance in 1942.

Leisure education also will offer instruction on harmonica and fiddle. In addition, there will be a class devoted to singing and a class to inspire opera listeners.

Check the Evergreen Times for complete Leisure Education listings and registration information. Instructors will be available to answer questions at the Leisure Education demonstration evening beginning at 6:30 p.m., Wednesday, Sept. 25 on the fourth floor of the library building.

BREWINGTON SCOOTERS and MOPEDS
4239 Pacific Ave., Lacey 459-3933

Freeway legal, Automatic Transmission, Electric Start, 85 M.P.G. \$100.00 off. No freight or set up charges.

The scooter of steel. Shaft drive, locking storage compartment. 92 M.P.G. and Freeway legal.

American Hairways
(BEAUTY AND BARBER)

Seven Operators to Serve You!

BACK TO SCHOOL SPECIAL
Haircuts..... 1/2 Price off (with Student I.D. card)

Redken • Wella • Framis

MAKE AMERICA BEAUTIFUL!
\$10.00 OFF ON ALL PERMS
hours: Mon.-Fri. 9 a.m.-6 p.m.
Sat. 8 a.m.-3:30 p.m.
Thursday eves. by appointment.

103 N. Milroy 754-4466
expires Oct. 5, 1985

Organic Farm to host Harvest Fair

A bountiful harvest of toe-tapping entertainment, delicious foods and fun activities for all ages will be presented to the community at the sixth annual Harvest Fair at Evergreen Sunday, Sept. 29.

Hosted at Evergreen's 13-acre Organic Farm, the free 1985 fair begins at 11 a.m. Sunday and continues until 6 p.m., featuring a new and expanded program of activities. The popular folk-singing duo of Kay and Dusty Rhodes will open the

entertainment stage at noon, followed by four hours of Olympia talent. The musical menu includes delta blues by Truck Mills and Four Until Late; baroque duets by the C and M Violin Works; medieval tunes by Generica Musica; folk and bluegrass picking by Eppo; jazz by Tom Russell and the Porcupine Orchestra and a capella vocals by the Chromatic Connection. Doctor Mystical will perform a magic show for kids of all sizes at

1:30 p.m. on the main stage. Kids can also get acquainted with the farm's rabbits, ducks and other livestock. The Lacey Library Bear also will be on hand with stories and puppets.

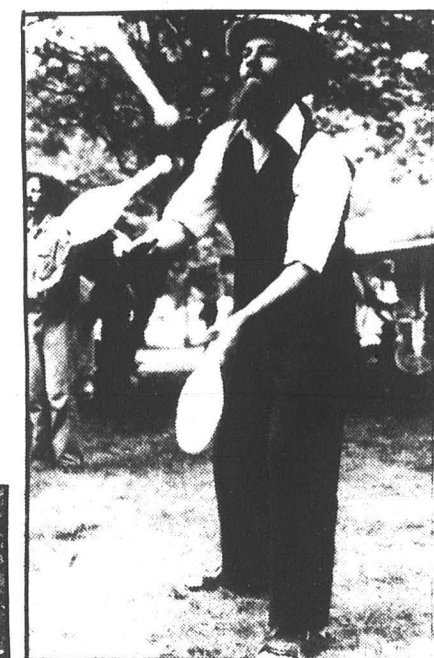
Hot corn on the cob, freshly squeezed apple cider, french bread, pasta dn pesta, salmon, oysters and other local delicacies will be on sale for hungry fair goers. The area's best homemade pies will receive top honors when a panel of local

celebrities headed by Evergreen President Joseph Olander will judge the wares. Crafts and produce booths will also display their wares and those seeking information on organic gardening can view the films, "Ruth Stout's Garden," "Garden of Eden" and "Sense of Humus."

"If you haven't been to the farm since last year's fair, you'll find some surprises," says Susan Moser, the farm's first manager. Those taking the guided tours will find a new student built greenhouse and lots more sunshine as two acres of trees that stood on the south side of the farm's garden beds were cleared to make way for more light. Guides will also outline the continuing growth of academic offerings and research opportunities at the farm.

Moser reports that no parking will be available at the farm and instructs fairgoers to take the Evergreen Parkway to Parking Lot B on the main campus. A free shuttle bus will leave every half hour for the farm and return visitors to their cars. Visitors may also take the quarter-mile walk to the farm on the college's woodland path.

Directions will be posted. Complete details on the Harvest Fair and pie-baking contest (all entrants receive prizes) are available by calling Moser at 866-6000, ext. 6160.



Computer Centers Purchase Plan
for College Students, Faculty, Staff and Alumni!!!

SANYO

All items we sell are guaranteed to do what they are designed to do or WE WILL REFUND THE ENTIRE PURCHASE PRICE with the return of the merchandise in the same condition as received.

Software Included With SANYO

MICROPRO Package
Wordstar
Calcstar
Easywriter 1
Spelstar

Mailmerge
Infostar
Sanyo Basic
MSDOS 2.11

EAGLE COMPUTER

OR:
Software Package (IUS)

INFORMATION UNLIMITED

Wordstar
Calcstar
Easywriter 1 and 2
Easy Planner
Easy Filer
Easy Mailer
Sanyo Basic
MSDOS 2.11

COMPUTER CENTER OFFERS A 10% DISCOUNT TO ALL CLIENTS ON ALL NON SALE ITEMS.

Computer Center offers a discount of up to 20 percent for special ordered software. We support many different types of software, or can arrange for support with the purchase of the package. We support and provide training for all software delivered with any of the computers purchased.

COMPUTER CENTERS
Authorized Sanyo, NEC & Sperry Sales and Service Center
207 E 4th, Olympia WA (206) 754-9565

Wine Shop & Deli

Cork & Crock

Gelato
Espresso
Beer-Making
Supplies

Cooper Point and Harrison
352-8988

WHY LEARN THE HARD WAY?

Term paper booklet tells all. How to get an 'A'. How to research, organize and write term papers. Save time and energy. Specific examples. Secret ideas to guarantee an 'A'. All for the price of a burger and fries. Send for: SUPERSONIC TERM PAPER, \$4.00 postpaid. Quick response.

Daisy International
1180-D Landing Road
Mt. Vernon, Wa 98273

Make it Special

BURGER KING

39¢ HAMBURGERS
49¢ CHEESEBURGERS
or
try our Garden-fresh "All You Can Eat" SALAD BAR

400 Cooper Point Road

EARLY FALL SPECIAL
at
CRYSTAL OPTICIANS
NOW 15% OFF
on
Contact Lenses and Glasses

• When you bring in this coupon •
Phone Us to Arrange Your
EYE EXAMS

Hours: 9-8:30 Mon.-Fri., 9-12:00 Sat.
430 So. Washington, Olympia 943-4981

sports

Fall quarter offers recreation opportunities: Running to off-the-wall fun

When the pressure from too much studying makes it hard to keep clam, many Geoducks decide to stick their necks out and exercise their mussels. Intramural Recreation activities focus more on the fun of just playing together rather than on fierce

competition. Weekly drop-in games of Ultimate Frisbee, volleyball, Pickleball, Wallyball, tennis coaching and an open gym for basketball allow you to come and go as you please. Special one-time events to help you meet others with

interests like yours include a racquetball tournament, an on-going soccer league, a Saturday afternoon flag football play day, the 8 or 13 mile lost Horizon Hill Run, the 2.7 mile Turkey Trot (win a bird or a dozen eggs) and *Get wRECKED*, a late night

chance to get rowdy, dance, play games and just generally whoop it up.

Special Neophyte Instructional Clinics are designed for those of us who missed learning the basics of some common activities. If you felt embarrassed because you didn't know how to throw a frisbee straight, serve a volleyball, kick a soccer ball without spraining your ankle, how to play basketball or where to put your elbows when doing the bench press, then this basic instruction and gentle coaching may be for you.

Sports Clubs offer a little higher degree of structure and competition for those who want it. Sports clubs are initiated by students so they change from year to year, but this fall we expect to have club teams in Ultimate Frisbee and men's basketball and will start organizing for ad-

ditional winter quarter teams in indoor soccer, co-ed volleyball and skiing. And the possibilities are endless.

New this year is *Fun Hogs*, for people who would like to do something fun off-campus one Friday night each month. Events will range from participatory things such as nature-hiking at Nisqually Delta, bowling and rollerskating, to "spectating" at things like an open mike at a coffee house in Tacoma, a Seattle Lasarium show or maybe something as goofy as an Evergreen cheering section at a local hometown football game.

These things and much more will be happening this year. For more information grab a copy of the Intramural schedule or contact Corey or any of the Intramural coordinators in the Recreation Center of- fice (866-6000 x6530).

Swim season starts

The Evergreen swimming and diving season is just around the corner for the 1985-86 season. Second-year coach Bruce Fletcher is excited about the coming season with the return of lettermen Max Gilpin, Charles Pratt and J.R. Baldwin for the men and Martha Grzier and Shawn Blaisdell for the women. New to the team this year will be diving coach Debbie Rogers.

Coach Fletcher would like to invite all athletes with swimming or diving experience to attend the first team meeting at 4 p.m. Wednesday, Sept. 25 in Room 202 of the Campus Recreation Center.

Evergreen will be the host school

for the Pacific Northwest Championships Feb. 20, 21 and 22. The first dual meet for the Evergreen swimmers will be at 3:30 p.m. Nov. 29 against Portland Community College here at Evergreen.

Fall sports warm up for another action packed season with tennis, soccer and cross-country

The Evergreen State College's fall sports programs officially started Aug. 25 with the first men's soccer team practice. The women's team started practicing Sept. 3. The cross country teams are having informal workouts and will be sending a team to Western Washington University Sept. 21.

The men's soccer team will have its first big test when the team hosts the Evergreen Invitational Tournament Sept. 14 and 15. Three of the teams participating, Western Washington University, Seattle University and Pacific Lutheran

University, were mentioned in the 1984 top 20 national rankings.

The other teams participating include Whitworth College, University of Puget Sound, Willamette University and Linfield College. The event is regarded as one of the top National Association of Intercollegiate Athletics pre-season tournaments in the country. Evergreen will field a strong team consisting of 12 freshmen, 9 sophomores, 2 juniors and 2 seniors. Freshman hopefuls include Steve Robbins of North Thurston High School, Dan Isaacson of Tumwater High School, Jeremy Best from Stadium and Shawn Medved from Issaquah High School.

Last year's captain, Kevin Schiele, will be working with two Fort Steilacoom Community College transfers, Mike Kerr and Joel Balmer, to provide leadership for the team.

New women's soccer coach Jane Culliton said she feels the program is on the upswing. She said she will have a strong crew of returning players as well as several freshmen with extensive high school experience. She said she plans to emphasize a positive team attitude.

The season includes 18 games in six weeks, with the season opener at Seattle University on Oct. 2.

Cross country coach Pete Steilberg reports he has two runners leading this year including Franny Hearn (21:36 - 5 K time) and John Kaiser, from Great Britain (33:18 - 10K).

The Evergreen men's soccer team played host to seven other teams last weekend in an invitational tournament. Evergreen finished fourth in the tournament, losing a tough final game to the University of Puget Sound. Pacific Lutheran University made full use of Most Valuable Player Kevin Iverson's skills and beat Western Washington University in the championship game, 1 to 0.

Iverson shared the Most Valuable Player honors with Evergreen senior Darrell Saxton.

Evergreen overcame a two-goal deficit and defeated Willamette 3 to 2. Zoske said the second half of the game was demanding and may have affected their performances in the UPS game.

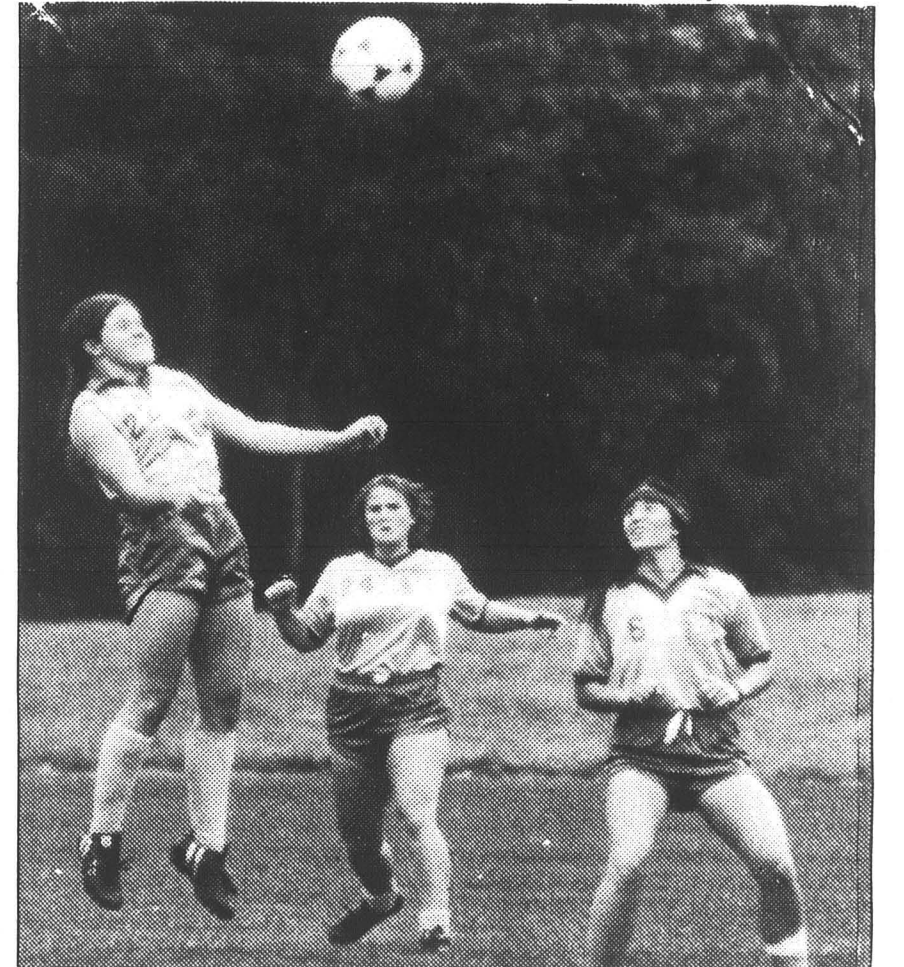
Puget Sound scored once in the first half and then finished their strong tournament performance with two goals in the second half. In the battle for fifth and sixth places, Whitworth defeated Seattle University 3 to 2. Linfield and Willamette, for the final two places, played an intense game with Willamette winning 2 to 1.

Other returning runners include Sean Meehan, Jon Fritzer, Matt Detering, Brent McManigal and Baethan Crawford. New runners are

Barbara Isaac, Maine; Tom Applewhite and Bob Reed.

Evergreen Cross-Country runners Bob Reed and Frannie Hearn placed first and fourth in their divisions in the All America City Run with times of 33:15 (10K) and 19:13 (5K).

The Evergreen men's and women's tennis teams will kick off their seasons with a joint team meeting at noon Thursday, Sept. 26 in Campus Recreation Center, Room 202. The teams will practice together from 4 to 6 p.m. Tuesday, Thursday and Friday.



Capitol SCHWINN

**Friendly Professional Staff
One Day Repair Service**

PEUGEOT
OLYMPIA'S FAVORITE BIKE SHOP

SALE ACCESSORIES HELMET SALE
\$159.95 \$19.98

• FENDERS
• LIGHTS
• LOCKS
• BAGS & RACKS

USED BIKES Reconditioned-Guaranteed

ALL-TERRAIN BIKES Large Selection

1931 East 4th • Olympia, WA 98501

943-1352

P & L putters 786-0065
503 s. Cherry

INDOOR MINIATURE GOLF AT ITS BEST!

HOLE NUMBER	1	2	3	4	5	6	7	8	9	10	11	12	13	14	15	16	17	18	TOTAL
1.																			
2.																			
3.																			
4.																			
5.																			
Par	2	2	2	2	2	2	2	3	2	2	2	3	2	3	2	2	2	2	40

18 Warm & Rainfree Holes show us your student ID and receive 50 CENTS OFF your game. We're at 5th and Cherry. School's-in Special!

(*not valid on Tuesday or with other coupons)

Marian's BOUTIQUE
For the new American cuisine

OPEN 8 A.M. to 6 P.M. WEEKDAYS

Espresso BAR
STARBUCKS Coffee

Home Baked Croissants, Great Muffins, Gift Shop

119 W. 5th. Ave. 786-1099

VILLAGE MART
3210 Cooper Point Rd. NW 866-3999

GASOLINE, GROCERIES, WINE AND BEER
(Excellent Variety of Imports) Fresh Fruit too.

WELCOMES BACK EVERGREEN STUDENTS

Special *Discounts Available for parties and large purchases

- ★ Rental Movies and VCR! VCR \$5.00 a day
- ★ Delicatessen with sandwiches (made to order)
- ★ Fried & Barbeque Chicken
- ★ Free coffee every sunday
- ★ Home Delivery for orders over \$40.00

"We are the most convenient - with everything in store for you."

TREASURE CHEST
Furniture
Kitchenware
Clothing

1919 Harrison Ave. W. 357 3454

BACK ON TRACK
Body Alignment Certification Training

CENTER FOR BODYMIND INTEGRATION STUDIES N.W. offer the following trainings this fall:

- BACK ON TRACK: Body Alignment Certification Training and
- MASSAGE TRAINING FOR STATE LICENSING.

Individual bodywork and stress assessment sessions

Treat yourself to a home visit if you are hurting.

Instructor: Wendy Schofield 866-4666

Value at the smiling 'O'

OLYMPIC DRUG

NOW POST OFFICE SERVICE
Post Office Boxes for Rent
Home of Low, Low Prescription Prices

2104 W. HARRISON WESTSIDE CENTER 943-3820

Olympic OUTFITTERS LTD.

O UTDOR RECREATIONAL EQUIPMENT INCLUDING: SKIS / BACKPACKING GEAR BICYCLES / SAILBOARDS CLOTHING / RENTALS

Olympic OUTFITTERS LTD.
117 N. WASHINGTON ST. OLYMPIA, WA 98501
BIKE SHOP 943-1997 - MOUNTAIN SHOP 943-1114

HOURS: WEEKDAYS (10 a.m. - 8 p.m.)
SATURDAYS (10 a.m. - 6 p.m.)
SUNDAYS (12 noon - 4 p.m.)

NOW OPEN FOR DINNER IN "A" DORM !!!

THE CORNER CAFE

CRITICS RAVE!!!

"... puts the French in their place..." Julia Child

"Corner Bread is good enough to raise the Dead." James Beard

"The food and the prices look Marvelous!!!" Fernando

OPEN 6 - 10:00 P.M., SUNDAY - FRIDAY
Your Student Managed, Non Profit Restaurant.

SeaGalley
SEAFOOD-PRIME RIB-SPIRITS

Fresh Seafood Dinners from only \$6.95!

Our chef presents several fresh seafood selections daily. Each is served with steamed, fresh vegetables and seasoned red potatoes. And, we still include your choice of salad bar or clam chowder.

For Reservations: 943-9380

Located on Cooper Pt. Rd. Next to the Capital Mall.

JoMama's

\$2.00 Off any size Parknose Pizza With the presentation of this Coupon.

A
Academic Advising: If you know what you want to do with your life, but don't know what you want to do next quarter, these are the people for you. The office is located with other student and enrollment services on the first floor of the Library. Call x6312.

Academic Advising Handbook, AAH: A useful little book that you'll need as soon as you lose it. Published by Academic Advising, it contains faculty and staff profiles, information on who does what, credit and a variety of academic resources. Available at Academic Advising.

Academic Credit: There are no letter or number grades here (try explaining that to your relatives.) Credit is obtained when a student fulfills his or her academic obligations. Credit can also be earned through past experience (see External Credit), by examination, or through transferring from another institution. (Those of you who have been semester students, beware; you'll probably lose a credit or two.) Credit is measured in standard quarter hours. The maximum is 16 hours per quarter, with 180 hours being the magic number for graduation.

ALANO club: 308 E. 4th Ave. Olympia, WA 98501, 753-9934, provides a meeting place, companionship, and assistance for alcoholics. Requirement for eligibility is a desire to stop drinking.

Alcoholics Anonymous: 352-7344 or 753-9934, 24 hours, provides referral service to those who think they may have a drinking problem.

Arts Resource Center: A student organization responsible for art events, poetry readings, referrals on where to buy art supplies, and the publication of *Rhetoric*, their annual literary publication. They are located in the Learning Resource Center on the third floor of the library. Any ideas or efforts are welcome.

ASH (Adult Student Housing): Privately operated apartments, across Driftwood Road from Campus.

Asian/Pacific Isle Coalition: An organization with membership open to all Asian and Pacific Island students. Its function is to educate the TESC and Olympia community to the needs, problems, and culture of Asian Americans. The Coalition sponsors workshops in cultural awareness, art, organizational skills speakers, cultural events, and has a library of books and periodicals of concern to Asian people. Watch for their Winter Festival of events. Feel free to stop by their office at LIB 3209, or call x6033.

B
Bank: South Sound National Bank has a branch office on the second floor of the CAB. Hours are 11 a.m. to 2:30 p.m.

Bicycle Shop: Located in the basement of the CAB, the shop loans tools and gives help and advice on any bicycle repair problems. A small user fee of 50 cents is all that is asked. Take the elevator down, no stairs. Call the Activities Office to check on their fall hours.

Bookstore: Located on the second floor of the CAB, the Bookstore carries books used in all programs and modules, and lots of others. They also carry film, candy, art supplies, candy, records, cards, pens...and candy.

Bookstore Branch: New Bookstore annex located on first floor of A dorm. Open seven nights a week for those unexpected necessities...like candy.

C
Campus Directory: Has the phone numbers (usually correct) for every person and organization on campus, sort of. Staff, faculty, and administration all have their own numbers. You're out of luck if you're trying to contact that cute girl in B dorm.

Career Development Office: Formerly Career Planning and Placement. Whatever you're going to do after graduation, these people can help you. They have information and advice on career exploration, job hunting, and graduate school placement. About the only post-grad option they don't cover is welfare. They sponsor lots of goodies, including counseling sessions, workshops, credit generating courses and have listings of up-to-date career opportunities. Located on the first floor of the Library. Call x6193.

Cashier: LIB 1106, just down the hall from the registrar. This is where you pay your bills and pick up your checks.

College Activities Building: (CAB as in taxi) The "student union" building at Evergreen, which incidentally, has no student union. Contains the Deli and cafeteria, a ride board, a study lounge, a roof deck, the coolest radio station ever--KAOS-FM, the S&A office, vending machines, and the CPJ office. A real hotbed of activity at lunch time.

College Recreation Center: Located just east (i.e. towards dorms) of the CAB. Contains a large swimming pool, complete with separate diving well, weight rooms, racketball/handball courts, a multi-purpose room for dancing, karate, etc. and a set of locker rooms with saunas. Students can use it for free. This facility epitomizes the country club atmosphere of Evergreen. Call x 6530.

Communications Building: Located just south of the Rec Center, this building houses an impressive array of facilities for artists including five studios for audio engineers, a television studio, recital halls, an experimental theater, practice rooms and tons of other goodies.

Contract, Group: A mode of study, usually full-time, in which a group of students agree to work/learn as a team with one or more faculty sponsors under a contract signed by all. Often student-generated; generally on an advanced level.

Contract, Individual: When a hit man is hired to rub out... No, really it's a working/learning contract between one student and one faculty under a formal agreement stating objectives, purposes and activities.

Cooperative Education: Coop Ed helps students to combine college study with on-the-job experience. Coordinators help students locate credit earning internships. Located in LAB 1, x6391.

Cooper Point Journal: We have no comment at this time. If interested,

stop by our office on the third floor of the CAB. Call x6213.

Coordinated Studies: As opposed to uncoordinated studies, a full-time course of study in which several disciplines are brought together under one subject.

Corner Cafe: Located on the first floor or is that the second floor of "A" dorm in the (you guessed it) corner. They serve politically correct and wholesome food and drink. You can catch movies on video every Saturday night and an occasional open mike, which showcases acts from bluegrass to experimental noise bands. It is student run. NEVER, NEVER, NEVER steal their dishes.

Crisis Clinic 24-hour Crisis Line: 352-2211, Business 754-3888. Provides a 24-hour telephone crisis intervention service for persons in Thurston-Mason counties. Serves as a major information and referral service to match persons to the resource best suited to meet their needs. If you're wondering if a service exists to meet a special problem, this is the place to call and ask.



Deans: There are several of them; a Dean of Library Services, a Dean of Student Development, a Dean of Enrollment Services, and four Academic Deans.

Deli, The: They have espresso and cappuccino. Looks like a Deli, but doesn't really smell like one...think about it. Located on the second floor of the CAB.

DTF: (Disappearing Task Force) Any ad hoc committee which is forced to make recommendations on a particular issue or function. Anyone can call for a DTF to be formed.

Driftwood Day Care Center: A learning center for both preschoolers and college students. The center primarily serves children of low-income, full-time students, who depend on the center in order to attend college. The staff depends heavily on work study, interns, and volunteer students interested in early childhood education. If you like to work with children, call the Center Coordinator Virginia Brian at x6060. Parents may pick up applications for their children at CAB 305. Children accepted must be 18 months to 4 years, 11 months old, and may attend up to six hours a day. The center runs from 9 to 4 with an hour earlier or later by permission. The fees are based on a sliding scale of the parent's income.

Financial Aid: Responsible for scrounging money for deserving students. They also have a bulletin board that lists on and off-campus jobs. Located in the Enrollment Services area. Nice people who love a good tear-jerker.

Food Services: The Evergreen Cafeteria run by Vonda located on the first floor of the CAB. They offer meal plans and pay as you go services. The servers often look just like mom. (See SAGA, Corner, and Deli)

Full-Time: Academic load of 12-16 hours. No relation to Evergreen Time.

Evaluations: The method by which students and faculty determine academic progress, and whether or not credit should be awarded. As often as once a quarter, or as little as once a year, students must write self-evaluations, faculty evaluations, and program evaluations. The first ones are hard to write, but by the time you're a senior you'll be the Hemingway of evaluations. The final week of the quarter is set aside for evaluation writing and faculty conferences.

Environmental Resource Center: Provides office space for environmental organizations, has a library, a vertical file, and a periodical rack. Sponsors films, speakers, events and petitions. There

are many opportunities for involvement here, so come in and join. Their office is CAB 306, next to the old' CPJ office.

Evergreen Time: Three hours and fifteen minutes behind Eastern Standard Time, another universal excuse, OR the average of four times shown on the clock tower. Take your pick. These definitions are not necessarily related.

Evergreen Van System: Do you live in one of those households with a funny name off Overhulse Road? Do you need a ride past 12 AM on weekends or on Sundays? Do you want to spend 35 cents on a student organization and get a ride to school or downtown in the process? Then ride the Evergreen Van! Anyway, there's no fun like seeing how many people can fit in the van and then watching everyone get off to let those sitting in the back out of the van.

Evans: Dan the man. Gone but not forgotten.

Evergreen Political Information Center: EPIC. A student group that disseminates political information through films, lectures, workshops, and their library of leftist materials. Located in Lib. 3222, ext.6444.

External Credit: Evergreen is one of the few schools that recognizes the School of Hard Knocks and accepts transfer credits from it. This is serious. If you have had educational experiences of least 12 months duration in employment, volunteer work or independent study, you can get Evergreen credit for it. You must submit a written document of this learning to the Prior Learning Program in Lib. 2216, ext. 6870. Apply in your first year back, before you forget everything.

F

Food Services: The Evergreen Cafeteria run by Vonda located on the first floor of the CAB. They offer meal plans and pay as you go services. The servers often look just like mom. (See SAGA, Corner, and Deli)

Food Services: The Evergreen Cafeteria run by Vonda located on the first floor of the CAB. They offer meal plans and pay as you go services. The servers often look just like mom. (See SAGA, Corner, and Deli)

Full-Time: Academic load of 12-16 hours. No relation to Evergreen Time.

G

Lesbian/Gay Resource Center: Serves the needs of area lesbians, gays and bisexuals. Sincere straights are welcome, too. They offer counseling, information and rap groups. Located in LIB 3223. Call x6544.

Geoducks: (pronounced Gooey ducks) This delightful beastie is Evergreen's mascot, after clobbering the other favorite choice, the Slug,

in an election of yore. They are non-competitive, spiritual and very misunderstood. Just like the folks they represent. The only way to capture one is to dig into the sand, throw the beastie into the air, and smack it with your shovel. But, we'd never do that to our darling mascot, would we?

Geoduck House: Where the sailboats, rowboats, kayaks, and canoes go. Also, the new home of the Olympia Community School.

Graphics: The graphics facilities are located in Seminar 4124, and are available to students who are working on projects such as posters, flyers, signs, etc. Services available for a fee are phototyping, headlining and production services by the staff. Use of the waxer, light tables, drawing board and consultation with the staff is free. For details call x6042.

Grievance Procedure: As outlined in the COG Document, the whole process of settling disputes, from informal mediation, to the Evergreen Council, and/or Campus adjudicator, to the Hearing Board, to lawsuit.

H



I

Information Center: The info center is that little room across from the Bookstore on the main floor of the CAB. (A little trivia: That space used to be a campus boutique!). They collect and disseminate info about Evergreen. You can pick up all sorts of propaganda there. Stop in, they have bus and van schedules, too.

Interlibrary Loan: If the TESC Library doesn't have it, the librarians can usually get it from another Northwest library via Interlibrary Loan.

Internship: Off-campus (usually) work experience undertaken for academic credit. (Is there any other reason to work?) Arranged through your friendly Coop Ed office. (Under C)

Information Services: Not to be confused with the Information Center. Information Services handles its own propaganda. The college's news bureau and its publications. They write all the news releases about Evergreen for the external media (including all student activities that seek publicity). They also write and edit the college Newsletter and Happenings, oversee the publication of the college catalog, Evergreen Times,

and all other major publications. If you need help promoting an event or if you've got an interesting academic project to describe or you've won a recent grant or award you think merits telling about, call x6128 (Lib 3114) right after you call the Cooper Point Journal at x6213

Innerplace: Center for spiritual exploration, primarily collects information about our world religions and occult/spiritual philosophies. Its purpose is to give the student a place to go when pursuing one's spirituality. To encourage interest in spirituality, Innerplace offers workshops and lectures throughout the year, conducts meditation sessions, and provides special interest studies. Join Innerplace at Lib 3223 or call x6145.

K

KAOS-FM: A non-commercial, listener supported radio station located on the third floor of the CAB or 89.3 on your FM dial. It's that radio station you pick up so well, even without an antenna. They offer a wide variety of music, from Hawaiian to post-punk, spoken word, and public affairs programming. They are always looking for people interested in volunteering.

L

Learning Resource Center: Provides individualized help with reading, writing and study skills for Greens on both a walk-in and module basis. They do this through self-programmed materials, tutoring assistance, and assessment of needs. Lib. 3401. x6420.

Leisure Education Workshops: Non-credit classes, everything from photography to Chinese cooking, are sponsored by Leisure Ed. Call x6530 for registration information.

Library Loop: The loop in front of Charles J. McCann Plaza (Red Square) is really the Charles J. McCann Loop, but called the Library Loop because it doesn't go there. Not to be confused with the Dorm Loop which doesn't go to the Library either.

Lost and Found: If anything is lost, go to Security, Sem. 2150 or call 6140.

M

MEChA: Movimiento Estudianti Chicano del Aztlan, is a Chicano student organization that combines a concept of self-identity, cultural heritage, history and contemporary chicano student activities. They educate Evergreeners and Olympians about the Chicano experience, and are here to meet the needs of Chicano students that the normal resources fail to meet. Contact them at Lib.3206 x6143.

Media Production Center: Media equipment for student use. In Library 1302.

Metal Shops: In the Lab Annex (between Lab I and II) for heavy metal work. (No, not like Judas Priest). Lab I basement has tools for more detailed work. These facilities are primarily for academic work.

Modular Housing: (The Mods) Those suburban duplexes near the Rec Pavilion are four-student apartments run by housing. Hot-tub parties and other soon-to-be-Yuppie activities are frequent.

N

Northwest Native American Center: The purpose of this center is the education and creation of Indian awareness. By recognizing and embracing cultural differences in a positive manner, they hope to alleviate racism, prejudice, and other social ills. They encourage all Native American students to become involved. Contact the Center at Lib. 3212.

O

Older Student: Older students (meaning in relation to how long they've been at Evergreen, not how old they are) tend to have certain qualities which distinguish them from freshman and transfers. Look for these tell-tale signs: They never play with the squirrels, they never call a woman a girl (due to behavior modification techniques), and they know that a large size tea costs the same as a small at SAGA.

Organic Farm, The: Located at 2712 Lewis Road NW, Evergreen's Organic Farm is a living laboratory where the emphasis is on combining "book learning" with "hands-on" experience in the areas of animal husbandry and wifery, beekeeping, plant propagation, gardening, aquaculture, construction and other farm-related activity. Everyone is welcomed to join the activities and workshops that go on there.

P

Part-time: An Academic workload of less than 12 quarter hours.

Portfolio: (1) Your record of performance on file with the Registrar. (Yes, all the world is a stage.) It contains self-evaluations, program descriptions or a copy of your individual contracts. (2) Your won record of performance: contains all of the above, plus examples of your work-papers, slides of art pieces, tapes of music, photos of performances or shows, etc.

Potluck: What you take when you're the last person to register. Or a social gathering in which everyone brings a part of the meal. Evergreen is Potluck City.

Printmaking Lab: Good facilities for silkscreening, bookbinding, photo etching and letterpress. Located in the basement of Lab II.

Process: An Evergreen catch word, process can describe anything from what happened in a lousy seminar ("our group's process really sucks") to all the conditions of someone's life ("the process I went through this quarter...")You hear it almost as often as you hear "headsapce", "kharma", and "personal reality".

Provost: Patrick Hill is Evergreen's Provost. The Provost is the person who is ultimately responsible for everything to do with academics. He is also Academic Vice-President.

Program Secretary: The person with the goodies. Assigned to work with a group of faculty, these resource persons have unending patience for people who call every five minutes to see if Jane C. Faculty is in yet. They have all the forms you need to be a successful Evergreener.

R

Recreation Pavilion: That big concrete tent located on the edge of the soccer field (ever try to put stakes through a concrete tent?) Contains: two tennis/basketball courts, backboards for tennis practice, and two bathrooms.

Red Square: The main government plaza in Moscow. Also, the red brick plaza in front of the library. The red brick was chosen so that if anyone ever fell off the buildings it wouldn't stain. Red Square is rumored to be riot-proof and Older Students often call it by its proper name, Charles J. McCann Plaza.

Residency: If you wish to become a resident, click your heels three times, turn around twice and say to yourself "There's no place like Evergreen". Get a state ID or driver's license, register to vote, open up a bank account, get a job, and change your car registration. Then wait a year. If you don't do these things you'll end up like some of the older students who have been going to TESC for 10 years and have still not qualified for residency.

Retreat: When you realize the deans and faculty have left to plan next year's curriculum. Remember when Mom and Dad used to go away for a week and leave you alone? Academic programs also take retreats in order for students to get to know each other and play very revealing party games.

S

S&A: (not SNA). Stands for Services and Activities. \$63 of your tuition each quarter goes to S&A. The money is then distributed through the Services and Activities Fee Review Board, comprised of one student, one faculty and one staff. S&A funds just about everything, including the CAB and REC centers, KAOS-FM, the Van System, and even us, the CPJ. Located at CAB 305 or call x6220.

S.A.G.A.: If you think this stands for Slop and Gastrointestinal Assaults, you are probably a transfer student or are suffering from over-exposure to acronyms. "SAGA" is short for "Kamadesaga", the Native American name for Geneva, N.Y., where the corporation began in 1948. The cafeteria here is called SAGA, and run by it, but has its own unique style and tastes (literally) far better than any other SAGA cafeteria anybody we know has ever eaten at. They're responsive to notes left by the side order window. In an image-boosting maneuver, SAGA changed its name to The Greenery. Don't be fooled.

Security: Those men and women in blue that chase the Sasquatch monster from behind the Organic Farm. They handle security problems. Register the serial numbers of your valuables with them. Located in Sem 2150, x6140.



Self-Paced Learning Unit: (the infamous SPLU) The SPLU's are usually found in their native habitat, the SPLU lab on the first floor of Lab II. The SPLU's are not a pop band, but rather a collection of "technical resources" (i.e., computers, sound-on-sound tapes, video do-hickys, etc.). Also inhabiting the SPLU labs are typewriters, computer terminals, light tables, a sewing machine, glass blowing, and much, much more. You've got to see it to believe.

Seminar: A scheduled group meeting in which students discuss their class readings and general thoughts. Rules to live by: Never eat in seminar, it is bad form. Never interrupt your neighbor's discourse on Plato's Republic to ask what the Thursday Night Film is, and never say anything really thoughtful or you'll give yourself away. Seminars are essential to the Evergreen Education, and as a result are nearly inescapable.

Slugs: The darling creatures that live up any walk around school. Slug slime can be removed from you feet or roller skates with a crowbar soaked in gasoline. Ha-ha, just kidding, actually, slug slime NEVER comes off; once you step on a slug you are branded for life.

Social Contract: Available at the Information Center, these documents outline the principles of social conduct for work and life at Evergreen. Read carefully, know your rights.

Sponsor: A faculty member who supervises student's work in an individual contract. They come in two flavors: Rubber Stamp and In the Same Field You're Studying. The second are preferable, but often hard to find. The others work well in a pinch.

Student Accounts: The friendly, but often confused office at the rear of the registration area on the first floor of the library. You'll want to see them when a computer error credits your account with \$16,000.

T

Third World Coalition: Evergreen's answer to a Minority Affairs Office. It is an administrative office designed to ensure Third World individuals on campus complete and equal access to all educational opportunities and services offered by the college. The coalition provides referrals, academic and social advising, and campus-wide cultural activities. The coalition also acts as an umbrella organization for the Third World student groups, providing advocacy, advising and technical assistance. They have a student lounge (Lib 3205) but the regular office is at Lib 3204.

Third World Women: Organized to fulfill the needs of (you coulda guessed) Third World women, especially those whose needs are not met by any other campus women's group. Lib. 3211, x6006.

Tides of Change: A collective women's production company. They sponsor concerts, skill sharing, workshops, films, dances and discussions. Watch for their events. Located in Lib 3213, x6162.

Tofu: This soy bean curd product is nearly impossible to escape eating at Evergreen. Folks say it goes with everything, but this has been hotly contested at Program potlucks. You should be wary of any food product that takes on the flavor of anything it is cooked with.

U

UJAMAA: Swahili for cooperative economics. The UJAMAA society exists to develop and reinforce Black consciousness and to secure their self-determination as a foundation in this society. They provide a friendly atmosphere for Black students to meet and talk with other Black students. Located at Lib 3207 or call x6781.

Upside-Down Degree: This program awards credit for a previously earned technical or vocational degree. Students accepted into the program must follow guidelines, and will take mostly liberal arts for two years here at Evergreen. Contact the Prior Learning office in Lib 2216, x6870.

V

Vending Machines: Located on the first floor of the CAB. There's coffee, ice cream, chips, cookies and candy. People sometimes kick them in the gut, but try to be nice.

Veterans' Affairs: Located on the first floor of the library. Get advice on the GI Bill funds. Call x6254 for details.

W

Workstudy: This is a program to raise poor students into the ranks of the working poor. That's right, if you're poor, they'll give you a job so you can remain poor. Find out from financial aid if you're eligible, perhaps you can join the hundreds of other Greens who pay their rent late each month.



Y

Yurt: A frame house, usually with plastic walls, we think, but we know they are usually found in Mongolia or in the woods around TESC. Definitely a way to get back to nature, without having to give up electricity, due to the miracle of extension cords. The staff here at the CPJ admits total ignorance on this matter, due to the fact that we all live in plasterhomes.

Z

The sound the CPJ staff makes right after the paper comes out.

reviews

Floyd members do it alone

by Duane Anderson

The albums of the Pink Floyd have long been a source of enjoyment for gobs of folks, but the work of Pink's members beyond the collective Floyd often go overlooked. This situation is unfortunate for the overlookers, for some boffo music has been created on Pink Floyd solo projects. Well, I have taken upon myself to present a guide to what Floyd members have done when left to their own devices.

The Pink Floyd originally contained Syd Barrett who provided vocals, writing, and guitar playing. After Barrett was kicked out of the band for being undependable (caused by a drug habit—those stories about Syd going insane just are not true), he decided to start a solo career. I have only heard dark and evil rumours of what lurks on his two solo albums (*The Madcap Laughs* and *Barrett*) and therefore they are the only two Pink Floyd albums I have not had fed through my ears. If you be brave, you may want to attempt a listening to these two discs (they are also both available in a single package titled, *Syd Barrett*).

Roger Waters, the Floyd's bass player and the writer of all but a

handfull of Pink Floyd lyrics from *Dark Side of the Moon* on, was the next to venture out of the Floyd fold. In 1970 he teamed up with Ron Geesin (who earlier in that year had co-wrote "Atom Heart Mother" with the Pink Floyd) in order to make the soundtrack to *The Body*. Geesin's part of the soundtrack comes from the edge of music, where King Crimson used to live in bygone days. While much of Geesin's music is good, Water's songs stand out. Water's provides four folk songs in the vein of "Grantchester Meadows" (from *Ummagumma*) and "Southampton Dock" (from *The Final Cut*). His tracks here include the original "Breathe" (the second version dwelling on *The Dark Side of the Moon*); this "Breathe" describes what enters your lungs when you breathe our modern polluted air.

Not until the break between *Animals* and *The Wall* in 1978 did a Floyd member record outside the Pink Floyd. David Gilmour, the Floyd's guitarist since shortly before Barrett was dropped, brought out *David Gilmour*. This album saw Gilmour re-uniting with two gentlemen he had played with before joining the Pink Floyd: Rick Willis on bass and Willie Wilson on drums. Gilmour is one of rock's most underrated guitarists (if you

think he is only second class take a listen to "Atom Heart Mother" and the *Animals* album), but instead of using the solo album to prove his skill he made a laid back album. The standout tracks on "There's No Way Out of Here" written by Ken Baker and "Short and Sweet" written by Gilmour and Roy Harper.

A few months later, Rick Wright, the Floyd's keyboard player until *The Final Cut*, put out an even more laid back—if not outright mellow in places—album titled *Wet Dreams*. Richard's wife, Juliette, provides words for "Against the Odds," which, like Baker's tune for Gilmour, ponders whether there is "a way out of here." Rick tends to be heavy-handed on piano chords on songs with words, but on songs like "Mad Yannis Dance" he does some interesting synthesizer work. Mel Collins, who has worked with at least one member of almost every progressive rock band, provides saxophone and flute. The album contains one really hot tune, "One From the Top" with good performances from Snowy White on guitar and Larry Steele on bass. Reg Isadore, on drums, stays in the background pretty much except for the last track, "Funky Deux," which is a fairly decent jazz track. If you like Mel Collins buy this album for his flute work on "Pink's Song," otherwise this

album is for hardcore Floyd fans only.

Another hardcore Floyd fan's only album is Nick Mason's first solo album. Mason beats drums for the Floyd and on his 1978 album, *The Fictitious Sports*, that is also what he does plus some production work. The words and music, which are mostly kind of silly, are by Carla Bley. Robert Wyatt adds strange vocals to already goofy lyrics. There are a couple jazzy tracks and the rest of the album is quite weird.

In 1984 Pink Floyd fans received a second David Gilmour solo album, this one titled *About Face*. The album's second track, "Murder," is an excellent song word wise and sound wise. The album's other two great tracks, "Love on the Air" and "All Lovers are Deranged," feature the music of Gilmour with the words of the Who's Pete Townshend. The album was followed by two MTV videos which were a bit dull. A videotape of Gilmour's 1984 concert was also released. On the tape Roy Harper joins Gilmour to sing "Short and Sweet" and Mason shows up for a lame version of "Comfortably Numb" (from *The Wall*)—harmonies are sung on this version of "Numb" and it sounds terrible.

The beyond any doubt best Pink Floyd solo LP is Roger Water's 1984 album, *The Pros and Cons of Hitchhiking*. All the musicians from *The Final Cut*, except Mason and Gilmour, are on this album, in-

cluding the talented Michael Kamen and The National Philharmonic Orchestra. Eric Clapton is also on board and his intense guitar playing adds new life to Water's words—Clapton's work on this LP, I think, is his best in years. Even Jack Palance shows up on this record, as a Hells Angel no less. *Pros and Cons* is a concept album that holds its own against Water's Pink Floyd concept albums. The album was followed by two videos: a tame one of the great song, "Sexual Revolution," which just shows Water's wife, Carolyne, walking around the farm that was used for the album cover of *A Collection of Great Dance Songs*, and an interesting, concept video for "Pros and Cons of Hitchhiking."

The most un-Floyd like solo album must be this year's LP by Mason and Rick Fenn (10 CC guitarist), *Profiles*. *Profiles* falls in the Progressive New Wave genre (other examples including: Yes's *90125* and Jethro Tull's *Under Wraps*). The album should only be purchased by flexible Floyd fan's or by those who enjoy Progressive New Wave. David Gilmour is on hand to provide vocals on "Lie for a Lie," a song with nice lyrics but one that needed Gilmour's voice to save the music. Mel Collins shows up for three saxophone solos. The best track is "Israel," with Danny Peyronel singing some great lyrics. In places Fenn displays some inspired guitar playing. Mason seems to be having fun—the question is whether he is having to much fun.

Love set against Nazism

by Arvid Gust

Sitting on the counter in a small shop, a small child licks a red, swastika-engraved lollipop, as two young women choose decorative pins (with a similar ornament) for their hair. This scene begins the drama of "A Love In Germany," set in late 1939, in a village of several hundred people, where horse and wagon are still more commonplace transportation than the motor car. It is springtime, and the German army officers enjoy their victories, which have been all-consuming, as their immaculate plan for the creation of a Master Race juggles the destinies of Men. Their uniforms, with holstered guns, convey the ominous presence of imminent danger. A narrator, believed to be the film's director, describes the tale and nature of the law which holds all citizens at bay; the socio-political implications being loyalty, or Death.

We are given an overview of life in this township, as huge red banners hung on buildings display the Fascist state, yet the viewer becomes enchanted with life's precious gifts, amid the turmoil. We are introduced to Pauline, who runs the small grocery. Her husband, portrayed by Otto Sander, guards prisoners in a distant labor camp and has been gone for over 8 months. As one might imagine, Pauline is lonely and longs for the arms of a lover, so she seduces the Polish peasant P.O.W., Stani Zasada, who has been spared by the Germans due to his Arian heritage. The Poles were to become Germanized eventually, and were given to servant tasks until then. The family who takes him in as their stable hand believe their freedom is insured if they sympathize with the Reich. Pauline and Stani fall in love and one scene of them is filmed through the spokes of her bicycle, suggesting to the viewer that their

freedoms are snared and held taut by the governance of the Law, which explicitly forbids such relations. A beautiful white-maned horse looks on, approving with a glance and graceful stance. Soon their love is exhibited as they no longer hide their relationship from harm's way, but reveal themselves to wary eyes, attracting gossip and upsetting the balance of Nature in the purity of their love which springs spontaneously from within. "For a night of happiness, I'd give my life," says Pauline to her friend, Elsbeth. Once her son even catches them in the act of love making. Eventually, she realizes the folly of their relationship, but it is too late. A neighbor, Frau Wylter (actress Marie Kristine Berrault) has become jealous, and seeking power

for herself, betrays their actions to the Secret Police. Bombs fall around them and blackout curtains are drawn. Pauline tells us "It's more important that you loved. They can't take that away from you." Stani is trampled by horses as Allied planes are heard bombing nearby. When Pauline goes with flowers to the hospital, the Chief of Security confirms the rumors and suspicions when he sees her leaving...Indeed, guilty of adultery and crimes against the Law, he has them both arrested. While in prison, a woman tells Pauline that she is sentenced to death for listening to Radio London and telling a friend that "the voice was so pleasant, I should like to meet that man." A fellow prisoner is given to the task of hanging Stani (for three cigarettes, as written into Himmler's manual of conduct.) Driven in the back of a wagon to his doom at a rock quarry, the fellow Pole tells Stani "No one knows how it ends... you know the laws of energy

conservation, and the basis of human life is Spirit, and cannot be destroyed, only transformed." "And escape only works in the movies, not in real life," states Stani. "A Love in Germany" is filmed in dramatic splendor, and the spoken language, German, with subtitles conveying the more important dialogue. There is no music in this film, but none is needed. Terrorism and violence are the themes of the Fascist, but none is explicit in this movie. The narration ends with an explanation "this ends our story, and many other films have been written to describe similar events and this has been the expression of my experiences." I recommend this film to all foreign film buffs for its exquisite photographic display and the mood created by director Andrez Wadja.

This film can be viewed downtown thru Thursday at the State Theater at 204 East 4th. Call the theater for times: 357-4010.

Peace and equinox celebrated

by Derek Maher

A healthy crowd, young and old, gathered twenty miles west of Olympia in recognition of perhaps one of the most consistently celebrated events in history over the weekend of September 21. The autumnal equinox, when day and night are of equal duration, marks the transition from summer to fall. During the Equinox Party for Peace, though, it would have been impossible to guess that it was not the heart of summer, for both clear skies and a warm night graced us.

This experiment in Eden, sort of a lilliputian Rainbow gathering, was magical in atmosphere and the spore of peace, as was expected due to the event's name. The next seasonal shift, the Winter solstice, happens December 21. If you want to have as much fun then as these celebrants did this past weekend, start planning your Solstice Party for Peace now.

folk, gospel, and psychedelic sounds in praise of peace. "Old Man," "Stella Blue," "Stand Up for Your Rights," "In My Life," and a smokin' version of "Jammin'" led by a soulful Rasta-looking man with a ... Mandela-like macrame cacon over his hair, stand out as sing-along summits. Solo highlights include "Nights in White Satin," "Give Me Peace," and a ditty called "Sweet Home Grown Sinsimilla" sung to the tune of "Swing Low Sweet Chariot."



Great Pizza

CASA MIA
8th and Plum, Olympia
352-0440

The Prickly Heat Blues Motel WELCOMES ALBERT COLLINS and the ICEBREAKERS with the Midnight Rythmn Band ALBERT COLLINS appeared with George Thorogood. Wednesday September 25, 9 p.m. at The Evergreen Ballroom Tickets at Rainy Day, Music Good, Positively 4th St. and Evergreen Ballroom. For Information Call 456-1112 or 352-9288

We offer a STUDENT DISCOUNT of \$1.00 off

Small Ads... Big Results! **CLASSIFIED ADS!**

CPJ, 866-6000, ext 6054

Keeping away from the classwork

by Dave Peterson

There are a lot of things about going to college that are never mentioned in the viewbook. Perhaps one of the most important of these is keeping yourself surrounded with interesting diversions. Anyone who's sat at a typewriter trying to put together an essay that just doesn't inspire them knows what I mean. Diversions are the things that keep you sane and well-rounded, that remind you that the rest of the world doesn't have any better idea what it's talking about than you do.

They are the things to reach for when you don't want to do your class work.

Cartoon books are always a favorite among big-league procrastinators. There's just something about them that's not too wordy. Lot's of swell pictures to look at. After 300 pages of Darwin that might be about what you're ready for.

In the realm of cartoons a few stand out as real fine ways to waste time. Most people are familiar with such strips as *Doodles* by Garry Trudeau and *Bloom County* by Berke Breathed, but sometimes it's hard to keep up with the daily strips in the newspaper. That's where books come in handy. It's pleasant to be able to sit down and read one of these for an hour or more without running out of material.

Another book well worth checking out for its diversion value is *The Beaver Papers* by Will Jacobs and Gerard Jones. This book professes to chronicle the "lost season" of "Leave it to Beaver", that twilight time in the history of the show when it was scheduled for cancellation. According to Jacobs and Jones, that

season saw the producers solicit script treatments from literary giants such as Jack Kerouac, Friedrich Nietzsche, John Steinbeck and others, in a last ill-fated attempt to save the floundering ratings.

Finally on the list of recommendations comes *Uncle Shelby's ABZ Book*. Shel Silverstein penned this little reworking of classic children's books of knowledge, and he is in fine form.

One entry runs: "P is for Pony. See the Pony. The Pony lives in the gas tank of daddy's car. He makes the car go. That is called 'horse power'. Maybe the pony is hungry... pour some nice sugar into the gas tank.

Ponies love sugar. When daddy comes home, tell him you have fed the pony and maybe he will give you a cowboy suit."

Another reads, "O is for Oz. Do you want to visit the wonderful far-off land of Oz where the wizard lives and scarecrows can dance and the road is made of yellow bricks and everything is emerald green?"

"Well, you can't because there is no land of Oz and there is no Tin Woodsman, and there is NO SANTA CLAUS!

"Maybe someday you can go to Detroit."

You get the general idea. This is a book that is made even more enjoyable if you have experience with some tiny tot that you can fix in your mind. Makes a great gift.

There are so many ways to enrich yourself through diversion that it would be impossible to describe them all here and now. It's best to make some of these discoveries yourself anyway. Happy meandering.

Enjoy an audio intelligent Environment!! (The Mind's Eye)

Music, Poetry, Books, Songs, Drama on Records and Tapes

CONTEMPORARY and CLASSICAL RECORDINGS by WOMEN

Kay Gardner Laurie Anderson Valaida Snow Mary Watkins Sweet Honey in the Rock

Lorraine Hansberry Alix Dobkin Joan Armatrading Meg Christian Sylvia Plath

Books on Cassette Asimov - H.G. Wells

Classics on Cassette — Bach to Wagner

Use Your Imagination:

EXCELLENT records
108 East Fourth Avenue
Olympia 754-7470

the Rainbow Restaurant

No Cover

BEST PIZZA IN TOWN

"Buy the slice, or buy a Pie"

JAZZ/ Wednesdays and Thursdays

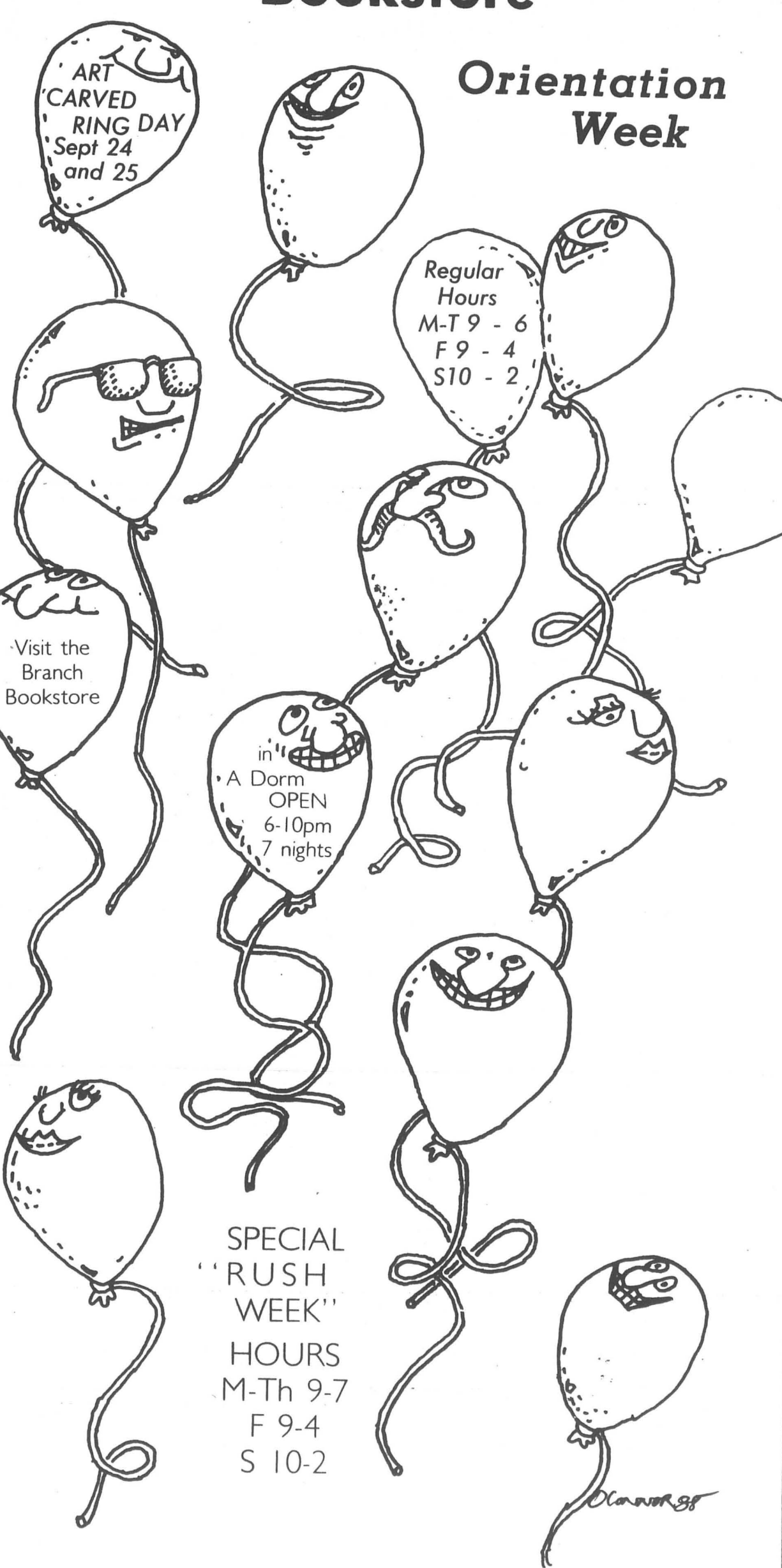
Sept. 27th, and 28th

EPP0 - Folk - Bluegrass

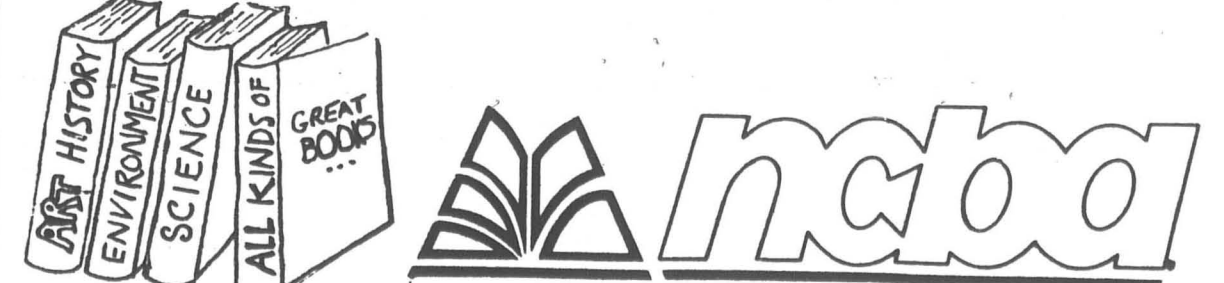
4th and Columbia 753-9943

The Evergreen State College Bookstore

Orientation Week



Welcome Students!



Great films with scores to match

by Duane Anderson

Two great films, *Birdy* and *The Emerald Forest*, slipped in out of distribution so fast this summer most moviegoers missed seeing them on the silver screen. Both films, though, had scores more than worthy of the fine films that they were composed for, and you can pick up the soundtracks at your local record store.

Birdy (based upon the novel *Birdy* by William Wharton) is the story of two kids from Philly (played by Matthew Modine and Nicolas Cage) who end up fighting in the Vietnam War. One of the guys has an eccentric fascination with birds and therefore is nicknamed "Birdy." In Nam, Birdy is shellshocked and at the beginning of the film he is in an army psychiatric hospital. An army doctor sends for Birdy's best friend, Al, with hopes that Al can bring Birdy back to "normal." The rest of the film is made up of well crafted flashbacks of Birdy and Al's lives together. The film, unlike other Nam flicks, does not make the War the one all consuming event in the character's lives but just part of their life developments. The film is directed by Alan (Pink Floyd *The Wall*) Parker, who with this film proves he is one of the most gifted directors working today.

The score for *Birdy* was composed by Peter Gabriel, who used to be with Genesis back when that band was doing art rock in their pre-pop days. With music formed from old Gabriel tracks plus additional new music, Gabriel has created a soundtrack that is ideal for *Birdy*. According to Gabriel's liner notes, Parker had picked out a few old Gabriel

tracks and with these began a period of "unorthodox explorations" of some of the sounds, rhythms and themes of existing tracks. New tracks were then arranged so that there would be a full compliment of moods. Most the music is subdued so that the most intense scenes, such as the action in Vietnam, could be fully heightened. "Birdy's Flight" stands out as the soundtrack's most compelling track which is fitting since it provides the music for the film's most compelling scene: pre-Nam Birdy, after study and reflection, "becomes one" with his bird and then Parker presents flight from the bird's perspective to the thunderous beat of Gabriel's music. The soundtrack to *Birdy* provides a marvelous introduction for those who have not heard him before and a fine addition to the collections of those who are already devoted fans.

The Emerald Forest has been receiving an undeserved reputation. The film has about ten to fifteen minutes of Rambo-style action, which has kept many folks away from the entire film which is otherwise quite beautiful and wonderful. In essence the film is a delving into the spiritualism of Amazonian Indians and how tribes formally untouched by the modern world perceive, through their mythical matrix, the rapid encroachment of progress. Powers Boothe plays a construction worker whose son, played by Charley Boorman (whose real father, John Boorman, directed the film), is kidnapped by Amazonian Indians. Several years later, the construction worker finds his son, but his son has been completely assimilated into the tribe. The con-

struction worker then becomes in-tory. This is the first John Boorman film I have seen but I was quite impressed; I am therefore curious why most reviewers seem to detest Boorman in the tribes' attempt to preserve their way of life and terri-

man and his work. The soundtrack for *The Emerald Forest* is just amazing. The music is mostly the work of Junior Homrich, a student of Amazonian music whose grandmother was a full blooded Indian. Homrich had

followed the film's production crew into the jungle and, according to Boorman's liner notes, Homrich's music so haunted Boorman he had to have Homrich do the soundtrack.

Continued on page 19



LOWEST PRICE EVER

the CLASH
including:
I Fought The Law/Complete Control
Remote Control/Clash City Rockers
White Man In Hammersmith Palais

JUDAS PRIEST STAINED CLASS
including:
Exciter/White Heat, Red Hot
Better By You Better Than Me/Invader/Savage

ON THESE ORIGINAL CBS HIT ALBUMS AND CASSETTES!

HUNDREDS OF "NICE PRICE" HITS TO CHOOSE FROM! SPRINGSTEEN! MCCARTNEY! CHICAGO! FOGELBERG! CLASH! JUDAS PRIEST! PINK FLOYD!

PINK FLOYD
A Collection of Great Dance Songs
including:
One Of These Days/Money/Sheep
Shine On You Crazy Diamond!
Wish You Were Here
Another Brick In The Wall (Part II)

THE FURS FOREVER NOW
including:
Love My Way/Danger/Run A-Round
Sleep Comes Down/Goodbye

COME EARLY FOR THE BEST SELECTION! Look for the "Nice Price" Sticker.

Bruce Springsteen
GREETING!
including:
Growin' Up/Blinded By The Light
Spirit In The Night/For You
It's Hard To Be A Saint In The City

Dan Fogelberg & Tim Weisberg
Twin Sons of Different Mothers
Featuring:
Tell Me To My Face/The Power Of Gold

ONLY \$3.99 3 for \$10.00
WESTSIDE CENTER
DIVISION AND HARRISON
357-4755

Professional Sound Reinforcement
TOMIE O'NEIL RIC WALLACE seismic audio
1426 S. Jackson
Seattle, Wa. 98144
(206) 329-8145

MUSIC 6000
The Complete Musicians Shop
491 - 2222
Midi synthesizer spoken here
All makes of guitars
Amps, drums, percussion, & ProSound gear
NEW AND USED
Lighting equipment
Custom guitar and electronic repair
Flutes, sax, and sound FX equipment
Digital Sampling
Recording gear
Digital drums
TAKE THE INTERCITY TRANSIT
BUS NUMBER 61
to
6000 PACIFIC AVENUE
IN LACEY, WASHINGTON 98503

Misplaced progressive rock re-emerges with the new Marillion album, *Misplaced Childhood*

by Lee Howard

This being the beginning of the school year, I'm taking it upon myself to push some noise on you that your ears can chew on while you prattle through your essays and such. *Misplaced Childhood*, a likely candidate for this post, is the newest album by that musical art-factory known as Marillion.

Marillion gets my vote for the most inventive and imaginative band to crawl from the dark abyss of the music scene for a long time. They are living proof that some people still push that "early 70's progressive rock" through their headphones. The kinda stuff where the song lengths were limited by how much could fit on one side of an album. Pompous and excessive - I LOVE IT!!

Yet Marillion is far from being an exercise in dinosaur rejuvenation or some hideous misanthropic throwback. They have a sound and energy all their own fueled by the ever-twisting mind of a painted Scottish poet who answers to the name "Fish".

Fish's lyrics are the starting point of Marillion's lofty atmosphere. He weaves tales of darkness and depression, from childlike romance to nightmares and shifting illusions. On their debut album *Script for a Jester's Tear*, he shows himself as a lyricist of incredible merit. Listen intently to "The Web". (This, needless to say, means you'll have to buy the album). And the flip of the single "He Knows, You Know", contains a charming ditty entitled "Charting the Single" composed primarily of puns. "Plastered in Paris, I've had an Eiffel..." (Interesting, to say the least. You might as well buy that one while you're at it.) The track "Forgotten Sons" shows bassist, Peter Trewavas, as a very nimble-fingered lad indeed, and "Garden Party" completely unleashes Mark Kelly's digits for some fine keyboard fun.

The second album, *Fugazi*, took some fascinating and just plain loud turns as they acquired a new drummer, Ian Mosley, to replace Mick Pointer. (Heck of a job, Ian.) From his startling intro on "Emerald Lies" to the ritualistic kettledrums of "Assassing" he comes to the foreground to give the album a much more rhythmic feeling than the first. *Fugazi* also contains Fish at his best; Give an ear to "Incubus". (Yes, you'll have to buy this one also.)

And while you're at it, get a copy of the single "Cinderella Search". Buy it! Even if it means selling your granny to some toothless turkish pirates for the extra cash. Money well spent, believe you me. It's the best interplay of guitar, bass, synth, drums, and Fish you're likely to hear for a long while.

So there was lots of really happenin' stuff goin' on in the word department. And hey, Fish hasn't stopped any bullets with his forehead recently so the new one *Misplaced Childhood* is brimming with some real bitchin' lyrics. (Don't worry. Fish don't write like this.)

Meanwhile, somewhere behind Fish lies the music. From majestic to serene to downright psychotic, *Misplaced Childhood* becomes the showcase for the magic fingers of guitarist Steven Rothery. The quick keyboard work that was so prevalent on the first two LP's is very much subdued to make way for Rothery's mad crescendos. Kelly can be heard being generally amazing on the opening track "Pseudo-silk Kimono."

All in all a boffo album. Five stars. Check it out for Fish and Rothery. It might do your mind good to look into the first two for Trewavas' hyperactive bass-lines and Kelly's fab keyboard breaks. Give these boys enough buckaroos and they might even get the idea of playing all the way the hell out here in the "sticks".

Continued from page 18

Homrich seems open to play whatever will provide the best sound, whether the source of sound be clay pots or his own body. Homrich's music brings you rapidly into the film and his jungle beat does not let you go even after the film is over (I was drawn right from the movie theater to a record store in order to buy the album).

Brian Gascoigne, on synthesizers and marimba adds another dimension to the film's music. When Homrich and Gascoigne combine

their skills the result is magic. On "End Titles-Eagle Break" Gascoigne helps give the sensation of an eagle's flight on his fairlite while Homrich brings the jungle alive employing a Jew's Harp, his own body, and other instruments. The other musicians involved on this soundtrack are also well skilled and include another talented percussionist, Joao Bosco. While some parts of this soundtrack album are a bit wierd and may make your neighbors wonder what your problem is, it is none-the-less worth owning.



THINK ABOUT THAT!

BROWSERS' Book Shop
357-7462 107 N. Capitol Way
USED BOOKS | TEXTBOOKS | BARGAINS

OLYMPIA MODERN JAZZ SOCIETY

A Year Of Concerts Swingin' In The Rain

Sunday, October 6
PREMIER WEEK at the NEW Washington Center for the Performing Arts
— Tom Russell & the Porcupine Group
— Dennis Hastings

Friday, January 10, 1986
BEBOP NIGHT
— NeoBop and BEBOP REVISITED
(location to be announced)

Friday, April 11, 1986
A NIGHT "OUT"
— Obrador and REBIRTH
(location to be announced)

Saturday, December 14
BIG BAND DANCE
— Christmas extravaganza at the elegant Olympia Ballroom

OMJS will also sponsor special events throughout the year. Subscribers will receive more information on these events and others.

If you would like to be informed about these concerts before they happen, you will want to subscribe to our Concert Program.
Questions or comments? Give us a call at (206) 754-7506

Olympia Modern Jazz Society
\$10 Subscription (Four Concert Programs and all special event flyers)
\$15 Season Concert Ticket
\$25 Subscription and Season Ticket
\$50 Subscription, Season Ticket, and your name listed as a Patron for one year in our Concert Programs

Send this form with your check or money order to:
Olympia Modern Jazz Society
Box 10192
Olympia, Washington 98502

Please give us your complete mailing address:
Name _____
Address _____

If you are interested in any of the following, please give us your phone number:
Taking a workshop
Facilitating a workshop
Volunteer work

Phone _____

Great films with scores to match

by Duane Anderson

Two great films, *Birdy* and *The Emerald Forest*, slipped in out of distribution so fast this summer most moviegoers missed seeing them on the silver screen. Both films, though, had scores more than worthy of the fine films that they were composed for, and you can pick up the soundtracks at your local record store.

Birdy (based upon the novel *Birdy* by William Wharton) is the story of two kids from Philly (played by Matthew Modine and Nicolas Cage) who end up fighting in the Vietnam War. One of the guys has an eccentric fascination with birds and therefore is nicknamed "Birdy." In Nam, Birdy is shellshocked and at the beginning of the film he is in an army psychiatric hospital. An army doctor sends for Birdy's best friend, Al, with hopes that Al can bring Birdy back to "normal." The rest of the film is made up of well-crafted flashbacks of Birdy and Al's lives together. The film, unlike other Nam flicks, does not make the War the one all-consuming event in the character's lives but just part of their life developments. The film is directed by Alan (Pink Floyd *The Wall*) Parker, who with this film proves he is one of the most gifted directors working today.

The score for *Birdy* was composed by Peter Gabriel, who used to be with Genesis back when that band was doing art rock in their pre-pop days. With music formed from old Gabriel tracks plus additional new music, Gabriel has created a soundtrack that is ideal for *Birdy*. According to Gabriel's liner notes, Parker had picked out a few old Gabriel

tracks and with these began a period of "unorthodox explorations of some of the sounds, rhythms and themes of existing tracks." New tracks were then arranged so that there would be a full compliment of moods. Most of the music is subdued so that the most intense scenes, such as the action in Vietnam, could be fully heightened. "Birdy's Flight" stands out as the soundtrack's most compelling track which is fitting since it provides the music for the film's most compelling scene: pre-Nam Birdy, after study and reflection, "becomes one" with his bird and then Parker presents flight from the bird's perspective to the thunderous beat of Gabriel's music. The soundtrack to *Birdy* provides a marvelous introduction for those who have not heard him before and a fine addition to the collections of those who are already devoted fans.

The Emerald Forest has been receiving an undeserved reputation. The film has about ten to fifteen minutes of Rambo-style action, which has kept many folks away from the entire film which is otherwise quite beautiful and wonderful. In essence the film is a delving into the spiritualism of Amazonian Indians and how tribes formally untouched by the modern world perceive, through their mythical matrix, the rapid encroachment of progress. Powers Boothe plays a construction worker whose son, played by Charley Boorman (whose real father, John Boorman, directed the film), is kidnapped by Amazonian Indians. Several years later, the construction worker finds his son, but his son has been completely assimilated into the tribe. The con-

struction worker then becomes in-itory. This is the first John Boorman film I have seen but I was quite impressed; I am therefore curious why most reviewers seem to detest Boorvolved in the tribes' attempt to preserve their way of life and territ-

man and his work.

The soundtrack for *The Emerald Forest* is just amazing. The music is mostly the work of Junior Homrich, a student of Amazonian music whose grandmother was a full blooded Indian. Homrich had

followed the film's production crew into the jungle and, according to Boorman's liner notes, Homrich's music so haunted Boorman he had to have Homrich do the soundtrack.

Continued on page 19



LOWEST
PRICE
EVER

ON THESE ORIGINAL CBS HIT ALBUMS AND CASSETTES!

HUNDREDS OF "NICE PRICE" HITS TO CHOOSE FROM! SPRINGSTEEN! McCARTNEY! CHAGO! FOGELBERG! CLASH! JUDAS PRIEST! PINK FLOYD!

COME EARLY FOR THE BEST SELECTION! Look for the "Nice Price" Sticker.



ONLY \$3.99 3 for \$10.00

WESTSIDE CENTER
DIVISION AND HARRISON
357-4755

the CLASH
Including:
I Fought The Law/Complete Control
Remote Control/Clean City Rockers
White Man In Hammerhead Palace

**JUDAS PRIEST
STAINED CLASS**
Including:
Exciter/White Heat, Red Hot
Better By You Better Than Me/Invader/Savage

PINK FLOYD
A Collection of Great
Dance Songs
Including:
One Of These Days/Money/Sheep
Shine On You Crazy Diamond
Wish You Were Here
Another Brick In The Wall (Part II)

**THE FURS
FOREVER NOW**
Including:
Love My Way/Changes/Run Ar'd Run
Sleep Comes Down/Goodbye

Bruce Springsteen
Including:
Growin' Up/Blinded By The Light
Spirit In The Night/For You
It's Hard To Be A Saint In The City

**Dan Fogelberg &
Tim Weisberg**
Twin Sons of Different Mothers
Featuring
Tell Me To My Face/The Power Of Gold

Misplaced progressive rock re-emerges with the new Marillion album, *Misplaced Childhood*

by Lee Howard

This being the beginning of the school year, I'm taking it upon myself to push some noise on you that your ears can chew on while you prattle through your essays and such. *Misplaced Childhood*, a likely candidate for this post, is the newest album by that musical art-factory known as Marillion.

Marillion gets my vote for the most inventive and imaginative band to crawl from the dark abyss of the music scene for a long time. They are living proof that some people still push that "early 70's progressive rock" through their headphones. The kinda stuff where the song lengths were limited by how much could fit on one side of an album. Pompous and excessive- I LOVE IT!!

Yet Marillion is far from being an exercise in dinosaur rejuvenation or some hideous misanthropic throwback. They have a sound and energy all their own fueled by the ever-twisting mind of a painted Scottish poet who answers to the name "Fish".

Fish's lyrics are the starting point of Marillion's lofty atmosphere. He weaves tales of darkness and depression, from childlike romance to nightmares and shifting illusions. On their debut album *Script for a Jester's Tear*, he shows himself as a lyricist of incredible merit. Listen intently to "The Web". (This, needless to say, means you'll have to buy the album). And the flip of the single "He Knows, You Know", contains a charming ditty entitled "Charting the Single" composed primarily of puns. "Plastered in Paris, I've had an Eiffel..." (Interesting, to say the least. You might as well buy that one while you're at it.) The track "Forgotten Sons" shows bassist, Peter Trewwas, as a very nimble-fingered lad indeed, and "Garden Party" completely unleashes Mark Kelly's digits for some fine keyboard fun.

The second album, *Fugazi*, took some fascinating and just plain loud turns as they acquired a new drummer, Ian Mosley, to replace Mick Pointer. (Heck of a job, Ian.) From his startling intro on "Emerald Lies" to the ritualistic kettledrums of "Assassing" he comes to the foreground to give the album a much more rhythmic feeling than the first. *Fugazi* also contains Fish at his best; Give an ear to "Incubus". (Yes, you'll have to buy this one also.)

And while you're at it, get a copy of the single "Cinderella Search". Buy it! Even if it means selling your granny to some toothless turkish pirates for the extra cash. Money well spent, believe you me. It's the best interplay of guitar, bass, synth, drums, and Fish you're likely to hear for a long while.

So there was lots of really happenin' stuff goin' on in the word department. And hey, Fish hasn't stopped any bullets with his forehead recently so the new one *Misplaced Childhood* is brimming with some real bitchin' lyrics. (Don't worry. Fish don't write like this.)

Meanwhile, somewhere behind Fish lies the music. From majestic to serene to downright psychotic, *Misplaced Childhood* becomes the showcase for the magic fingers of guitarist Steven Rothery. The quick keyboard work that was so prevalent on the first two LP's is very much subdued to make way for Rothery's mad crescendos. Kelly can be heard being generally amazing on the opening track "Pseudo-silk Kimono."

All in all a boffo album. Five stars. Check it out for Fish and Rothery. It might also do your mind good to look into the first two for Trewwas' hyperactive bass-lines and Kelly's fab keyboard breaks. Give these boys enough buckaroos and they might even get the idea of playing all the way the hell out here in the "sticks".

Continued from page 18

Homrich seems open to play whatever will provide the best sound, whether the source of sound be clay pots or his own body. Homrich's music brings you rapidly into the film and his jungle beat does not let you go even after the film is over (I was drawn right from the movie theater to a record store in order to buy the album).

Brian Gascoigne, on synthesizers and marimba adds another dimension to the film's music. When Homrich and Gascoigne combine

their skills the result is magic. On "End Titles-Eagle Break" Gascoigne helps give the sensation of an eagle's flight on his fairlite while Homrich brings the jungle alive employing a Jew's Harp, his own body, and other instruments. The other musicians involved on this soundtrack are also well skilled and include another talented percussionist, Joao Bosco. While some parts of this soundtrack album are a bit wierd and may make your neighbors wonder what your problem is, it is none-the-less worth owning.



Professional Sound Reinforcement
TOMIE O'NEIL
RIC WALLACE
seismic audio
1426 S. Jackson
Seattle, Wa. 98144
(206) 329-8145

MUSIC 6000
The Complete Musicians Shop
491 - 2222
Midi synthesizer spoken here
All makes of guitars
Amps, drums, percussion, & ProSound gear
NEW AND USED
Lighting equipment
Custom guitar and electronic repair
Flutes, sax, and sound FX equipment
Digital Sampling
Recording gear
Digital drums
TAKE THE INTERCITY TRANSIT
BUS NUMBER 61
to
6000 PACIFIC AVENUE
IN LACEY, WASHINGTON 98503

THINK ABOUT THAT!
BROWERS' Book Shop
357-7462 107 N. Capitol Way
USED BOOKS | TEXTBOOKS | BARGAINS

OLYMPIA MODERN JAZZ SOCIETY
A Year Of Concerts Swingin' In The Rain
Sunday, October 6
PREMIER WEEK at the NEW Washington Center for the Performing Arts
— Tom Russell & the Porcupine Group
— Dennis Hastings
Friday, January 10, 1986
BEBOP NIGHT
— Neotop and BEBOP REVISITED (location to be announced)
Friday, April 11, 1986
A NIGHT "OUT"
— Orlador and REBIRTH (location to be announced)
OMJS will also sponsor special events throughout the year. Subscribers will receive more information on these events and others.
Saturday, December 14
BIG BAND DANCE
— Christmas extravaganza at the elegant Olympia Ballroom
If you would like to be informed about these concerts before they happen, you will want to subscribe to our Concert Program.
Questions or comments? Give us a call at (206) 754-7506

Olympia Modern Jazz Society
\$10 Subscription (Four Concert Programs and all special event flyers)
\$15 Season Concert Ticket
\$25 Subscription and Season Ticket
\$50 Subscription, Season Ticket, and your name listed as a Patron for one year in our Concert Programs
Send this form with your check or money order to:
Olympia Modern Jazz Society
Box 10192
Olympia, Washington 98502
Please give us your complete mailing address:
Name _____
Address _____
If you are interested in any of the following, please give us your phone number:
 Taking a workshop
 Facilitating a workshop
 Volunteer work
Phone _____

Evergreen's history in photographs



Class of 1971 (???)



On the set of the Evergreen-produced film Eat the Sun



Photo by Aaron Zeliger
This wood carving is a new addition to Evergreen's environment

BEADS • BEADS • BEADS
One of the Top 3 Selections in the entire World.
3 minutes from Campus, located at Mud Bay.
Shipwreck Beads
Tel. (206) 866-4061
5021 Mud Bay Road
Olympia, Washington 98502

CHILDHOOD'S END GALLERY
FINE COLLECTION FROM OVER 300 AMERICAN CRAFTSPEOPLE. PLUS IMPORTED ITEMS, UNICEF CHRISTMAS CARDS, AND HOLIDAY ORNAMENTS.
Childhood's End Gallery
222 W. 4th Ave. Downtown Olympia 943-3724
Monday-Saturday 10:00 - 6:00 Sunday 12:00 - 5:00

MEXICO BONITO
Present this coupon
Buy One Dinner/ get 2nd Dinner at 1/2 price.
"When you're ready to eat authentic Mexican food, think of Mexico Bonito...you'll find a little bit of Mexico right here in Olympia and you may even order in Spanish!"
Lunch: Mon.- Fri. 11 a.m. - 2:30 p.m.
Dinner: Mon. - Sat. 4:30 - 9:30 p.m.
1807 W. Harrison 754-7251
(Valid until Oct. 4, 1985)

FUTON
It took 2000 years to improve this bed. It'll take just one night to improve your sleep.
Sweet dreams on a six - inch thick all cotton Japanese bed. Fold into a couch or chair. Portable! Sound sleep at sound prices. In stock.
We also feature:
•Maseur Sandals •Natural Medicine
•Exotic Incense •Best Prices on bulk herbs, spices and teas.
•Perfume Oils •Outstanding books for the seeking mind •Natural Body Care Products
•New Age music for relaxation and meditation •Backjack Leisure Seats
Your Resource for Stress Reduction
Mon-Fri 10-6pm, Sat 10-5pm
RADIANCE HERBS and MASSAGE
202 W. Fourth, Olympia, WA 98501 (206) 357-9470

Classified ADS

Scholarships, financial aid, available through computer search—\$39.00. High school students, college freshmen, sophomores. Details: Evergreen Scholarship Services, 401 11th Ave., Kirkland, WA 98033 or call us... (206) 822-6135.

Public Market/Swap Meet at the Thurston County Fairgrounds. Every Saturday, Sunday, and holidays 9 a.m.-4 p.m. Sellers space available, starting at \$5.00 491-1669

Serving the Evergreen Community since 1977. Wendy Schofield Certified Labor Movement Analyst (U. of W.), Licensed Massage Therapist (WA State). **BACK ON TRACK BODY ALIGNMENT** Certification Training and **MESSAGE TRAINING FOR STATE LICENSING.** Wendy Schofield 866-4666.

Found. One knapsack, containing fine woven cloth... if you've lost such items, please contact David, ext. 6054.

Found. Bag of clothes, and Ace of Pentacles—describe your goods, and you may have them returned. Call David, ext. 6054.

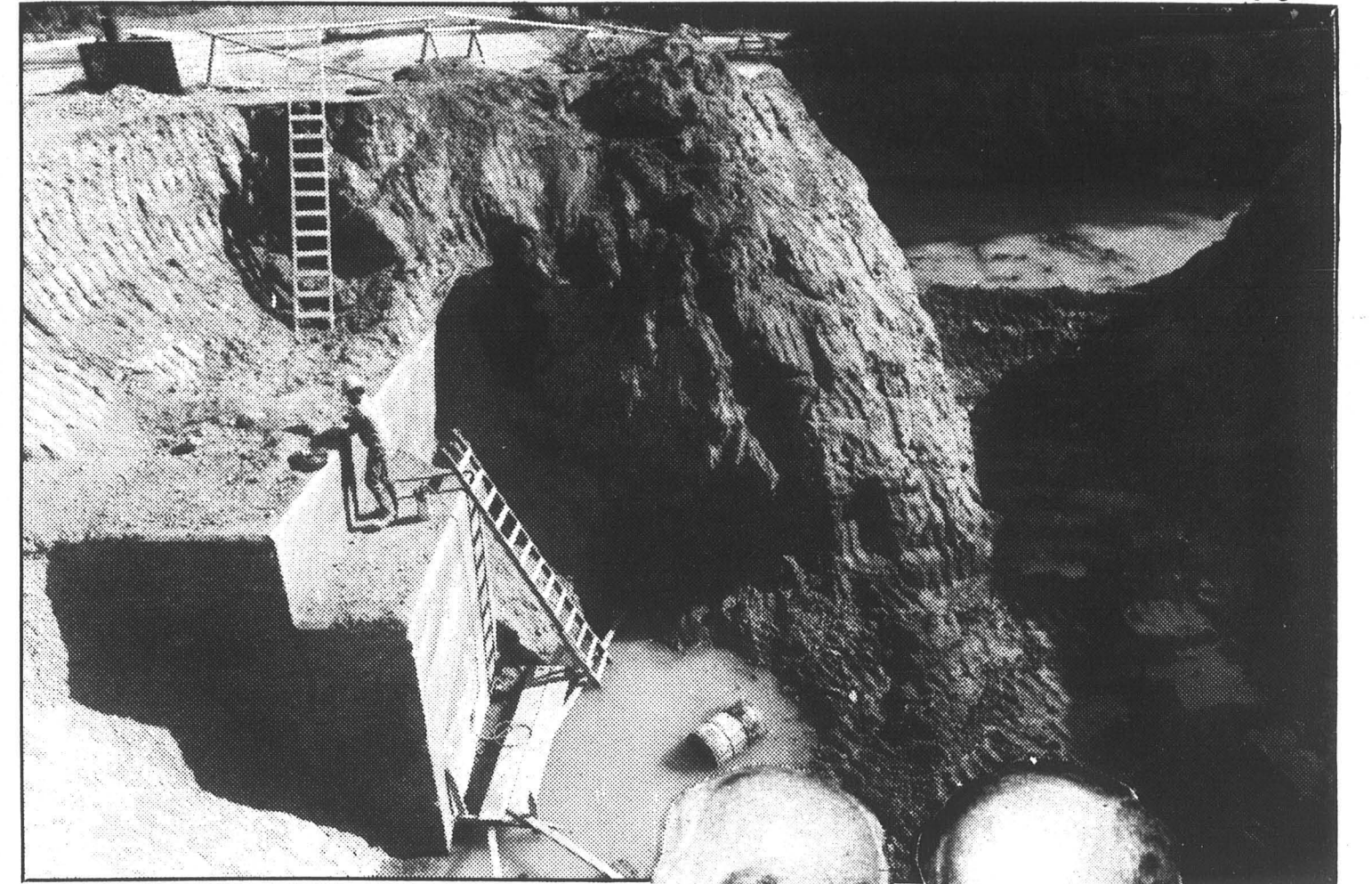
U-CUT WOOD. \$8.00 for 1/3 cord. Details: call 786-1515. For mailing list, info, phone 1-800-223-4892. Firewood Finders, Inc.

LIVE/Concert cassettes. Talking Heads, Who, Beatles, Furs, Straits, Dylan, Zappa, Yes, Dead, Tuna, Zep-pelin, Heart, Hendrix, Stone's, Genesis, Floyd, Doors, Blues Bros., etc. Walkers Unravel Records. Call evas., 866-9790.

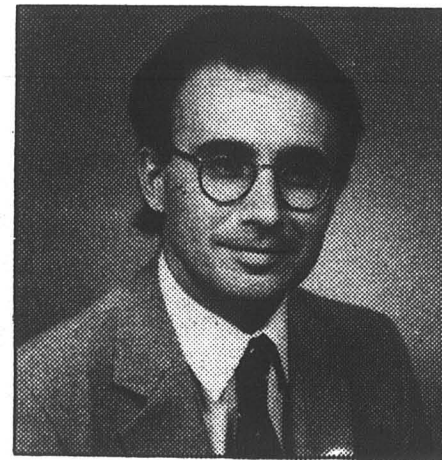
Best pups in town. 9 Shepard/Labrador pups, born Aug. 15. Looking for homy homes. Call me, 866-9253 (eves.)



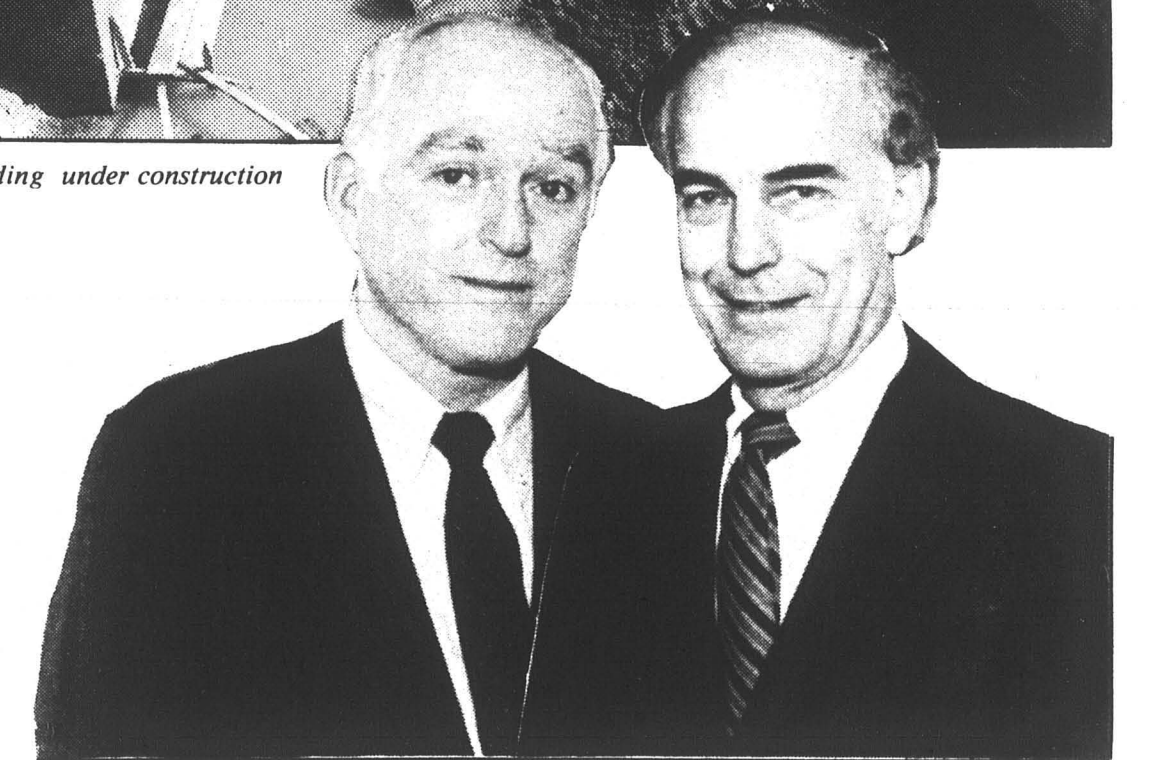
One more geoduck



The Communications Building under construction



President Joe Olander



Past Presidents Charles McCann and Dan Evans

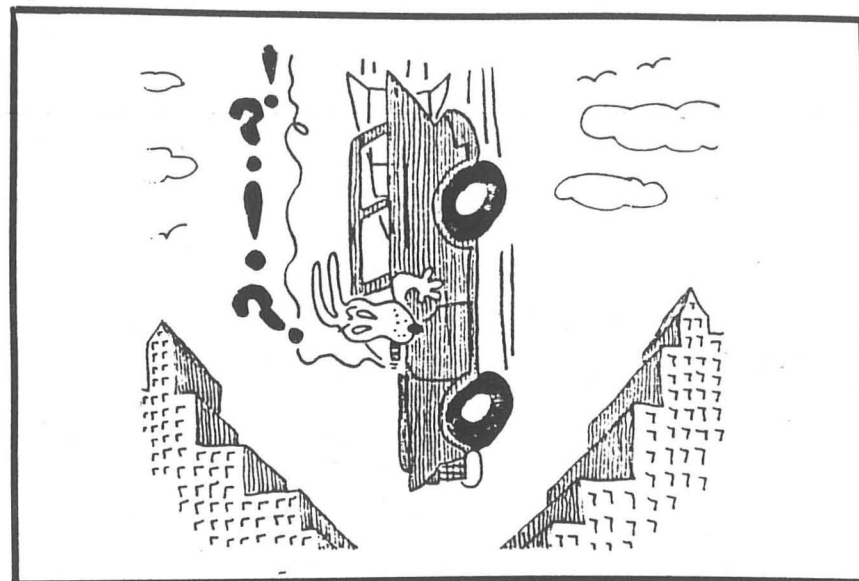
The Evergreen State College Food Service
Campus Meal Plan
Serving the Evergreen Community since 1977. Wendy Schofield Certified Labor Movement Analyst (U. of W.), Licensed Massage Therapist (WA State). **BACK ON TRACK BODY ALIGNMENT** Certification Training and **MESSAGE TRAINING FOR STATE LICENSING.** Wendy Schofield 866-4666.

Welcome Back!
SAVE 10% OR MORE
Buy Scrip
Pay \$180 for \$200 worth of scrip
Purchase at "The Greenery" 1st floor CAB
Wild Pizza Great Any Way You Slice It!
The Evergreen State College Food Services

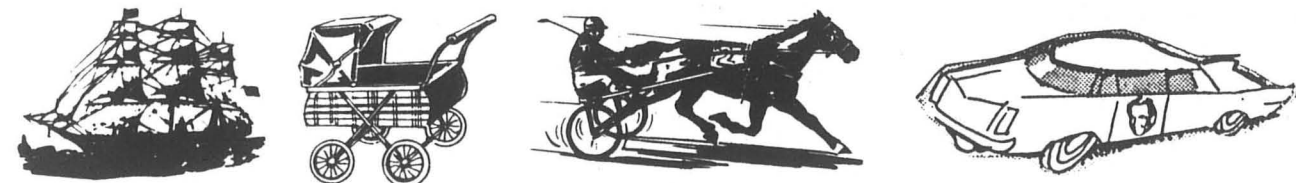
big fun



Trevor thinks "an electrical outlet" means taking out your aggressions on others with wires.



"Worth the ride across town"



***BIG FUN*
BUBBLY HELLOS!!!**

WELCOME STUDENTS

We Care About You
Black Hills Community Hospital

WE'RE OPEN TO SERVE YOU
Complete Medical/Surgical Care.
24-Hour Emergency
Physician Referral Service

754-5858
* Black Hills Community Hospital

CUT OUT AND SAVE THIS MAP

Archibald Sisters

- NATURAL SOAPS
- EXOTIC LOTIONS
- 100 PERFUME CHOICES
- FASHION JEWELRY
- EPIRIT CLOTHING/SHOES/ACCESSORIES
- FUNKY GIFTWARE
- GREAT TOYS
- HIP CARDS

Welcome Back, Students!

Olympia Food Co-op

benefits
The Co-op is the place on the westside for high quality, low cost, bulk food, groceries, dairy products, and produce. We also feature a full line of organic and natural foods.

COUPON
FREE: One Can of Rosarita Vegetarian Refried Beans
1 Coupon per shopper
Expires Oct. 15, 1985

COUPON
1 Shopping Trip at Member Prices
1 Coupon per shopper
Expires Oct. 31, 1985

Open to everyone
Ask about member

Bus Routes
41 from TESC or downtown (to Bowman)
45 from downtown or Capital Mall

Open 9am-8pm
7 days a week

921 N. Rogers - Olympia 754-7666

WELCOME BACK STUDENTS!

*** THE ONLY REASON** we're here, is to serve you and your financial needs with friendly and convenient service.

Branch Hours:
11 a.m. 'til 2:30 p.m.

*** Student Checking and Savings**
*** Cash Express-Cash Machine cards**
*** Investment Certificates**
*** Safe Deposit boxes**

"Staff available anytime with appointment."

South Sound National Bank

Peace Corps celebrates anniversary

Almost 25 years ago, presidential candidate John F. Kennedy tossed out an impromptu challenge to thousands of University of Michigan students: "How many of you who are going to be doctors are willing to spend your days in Ghana?" To his astonishment, a petition signed by more than 800 students affirming their interest reached him two days later.

According to Peace Corps literature, more than 120,000 Americans have served in the Peace Corps in more than 90 countries around the globe. There are now 6,000 Peace Corps volunteers serving in 60 countries, more than half of whom are involved in agriculture and agricultural-related projects.

Examples of projects include the survey of a million acres of terrain in Nepal and enhancement of the quality of native sheep in Barbados. The later project resulted in the improvement of nutrition of the Caribbean people.

Peace Corps volunteers receive extensive skill, language and cross-cultural training and are provided medical care, transportation and student loan deferments. Additionally, they are paid a monthly living allowance and a readjustment sum of approximately \$4,500 upon completion of service.

For further information about the Peace Corps, call 1-800-424-8580.



Photo by Aaron Zeliger

Pacific Surf Club

Olympia's best connection to the real world of dance music for ages 16-20

Saturday September 28th "House Party"

with **Steven Rabow***

Admission \$3.00 Fri. \$4.00 Sat.

"Hours of Adventure, Danger, Romance & Lust"

Listen to K HIT 107 FM for details
118 East 5th Downtown Olympia
754-9222

A Lively Place To Relax...

4TH AVE. WELCOMES TAVERN GREENERS!!

16 Beers On Tap
Big Screen T.V.

Live Music / Weekends

Come on in, **SEPT. 27th / 28th** and see **WORKING CLASS**
Olympia Cover \$2.50

POOL DARTS PING PONG

210 E 4th Avenue 786-1444
Hours: 11 A.M. - 2 A.M. Weekdays / 12 P.M. - 2 A.M. Sat. and Sundays

Economist speaks

Dr. Heidi Hartmann, an economist specializing in feminist theory, will discuss "New Directions in Public Policy: Patriarchy or Autonomy?" at 8 p.m. Tuesday, Oct. 8 in the Recital Hall at Evergreen.

The free public lecture will explore the connections between changing gender relations and economic

policy.

Hartman received her Ph.D. in economics from Yale University and currently is study director with the National Academy of Sciences Committee on Women's Employment and Related Issues.

The lecture is sponsored by Evergreen's Graduate Program in Public Administration.

Insurance Info

NDSL BORROWERS: If you have received a National Defense-Direct Student Loan while attending Evergreen and you plan to graduate, withdraw or go on leave next quarter, you are required to go through a NDSL Exit Interview before leaving. Contact the NDSL and Student Accounts office at 866-6000, ext. 6448, to make an appointment.

YOUR INSURANCE ENROLLMENT OR WAIVER request is effective from September through

August of each academic year, as long as you are enrolled. If you want to continue insurance coverage during a quarter while on leave or on vacation, you need to make special arrangements by contacting Anna Mae Livingston or Charlotte McDonald in Student Accounts, 866-6000, Ext. 6448.

Copies of insurance information brochures for **THE HARTFORD AND GROUP HEALTH** are available at Student Accounts, as are claim forms for **THE HARTFORD**.



(Formerly The Herb and Onion)

"COMING ATTRACTIONS" Starting Sept. 28th...

New Hours Mon - Sat 7am to 12pm

ESPRESSO APPETISERS DESSERTS NEW ENTREES

THE URBAN ONION
Hidden away in the old Olympian Hotel
943-9242

The Cooper Point Journal is published weekly for the students, staff and faculty of the Evergreen State College. Views expressed are not necessarily those of the college or the Journal's staff. Advertising material contained herein does not imply endorsement by the Journal. The office is located at The Evergreen State College, Campus Activities Building, Room 306. The phone number is 866-6000, X6213. All announcements must be double-spaced, listed by category, and submitted no later than noon on Monday for that week's publication. All letters to the editor must be typed, double-spaced, limited to 250 words, signed, and must include a daytime phone number where the author can be reached for consultation on editing for libel and obscenity. The editor reserves the right to reject any material, and edit any contributions for length, content, or style. Letters and display advertising must be received no later than 5:00 p.m. on Monday for that week's publication.

Editor: Dave Peterson
Managing Editor: Duane Anderson
Photo Editor: Aaron Zeliger
Production Manager: Polly Trout
Advisor: Virginia Painter
Writers: Trace DeHaven, Jon Epstein, Lee Howard, Rob Knapp, Bob Reed, Polly Trout
Production Crew: Jeff Albertson, Duane Anderson, Kurt Batdorf, Lee Howard, Mike McKenzie, Jenny Wortman
Ad Manager: David George

Special Thanks To:
Chris Bingham
Shirley Greene
Derek Maher
Photo Services
City of Olympia
Squid Everywhere
and anyone else we may have forgotten

It's not just a job it's an alibi the CPJ

poems



photo by Chris Corrie

Regarding the Kicking of Edgar Allen Poe

I remember thinking how great humans of history would regard their warts.

I carefully considered an erotic Egyptian queen, of course, coming to the obvious conclusion.

Then I mustered up a serviceable villain, only this time I was far less sure.

Then it came down to the one who has been bantered about so much in the halls of the pseudo psychopaths.

I am sure of only this:
Edgar Allen Poe combed his warts- probably even took them to lunch, toasting them with strange green decanters. Maybe he even taught them how to spell.

Robert Haines

Wild Life Proverb 12

I remember the time she had seen bears in the toilet
And I got mad like a motor
Explained with a vengeance
That bathrooms were no place for such a proud beast

I told her to clean up her visions or get the hell out
She got the hell out
But wait
I made a great and glorious fire in the backyard
burned everyone one of her sleazy romance novels
Without a doubt the finest blaze I will ever kindle

Robert Haines

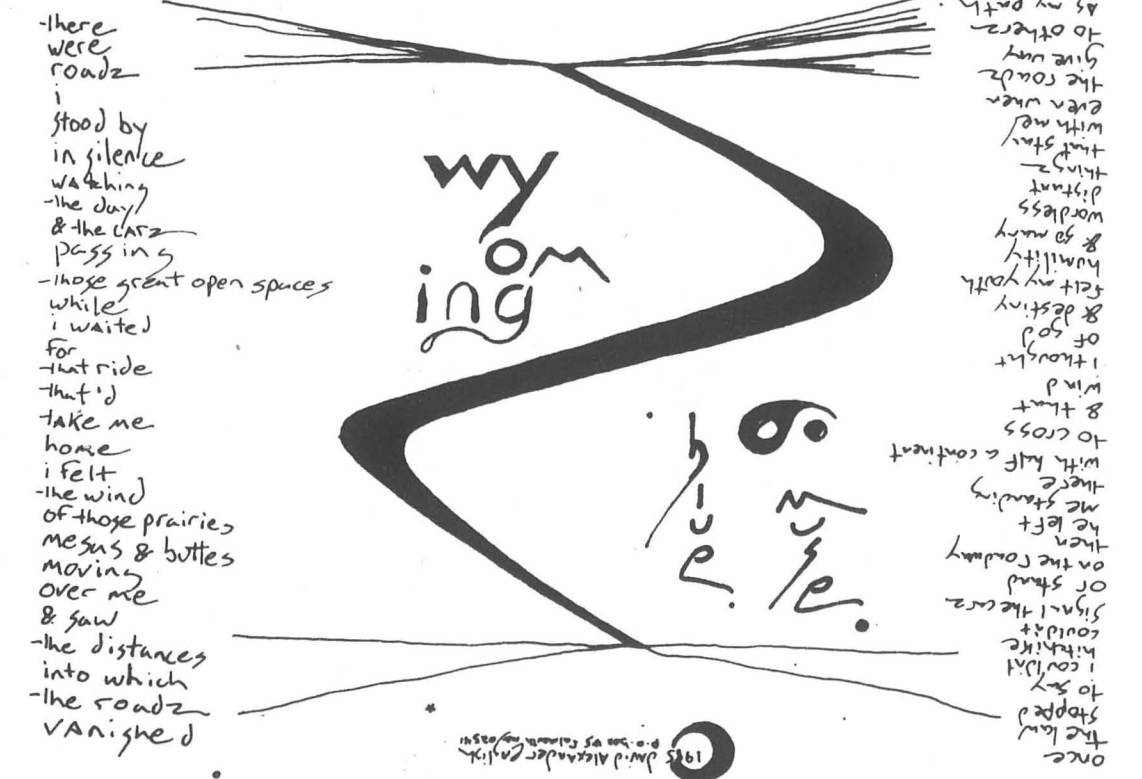
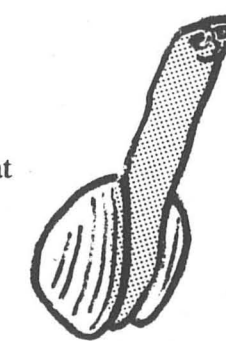
Looking into your golden glow
in the lamplight
you said "Tell me a story"
and I was speechless.
It's not as easy as that you know
When you're lost in the shine like that
the words get stumbled
and stick to your teeth

Chris Bingham

When I miss you
late at night

I sleep
in your long underwear.

Amy Alexander



Contract offered

The Politics of International Economic Relations, a student-initiated individual cluster contract, is open for interested students who have some background in economics and political science. The program will focus on U.S. foreign policy fall quarter.

The focus includes the economic substructure of U.S. foreign policy, its impact on trade and the Third World and its relationship to the distribution of power in the U.S.

Winter and spring quarters are open for students to construct another curriculum or continue the work begun in the fall.

The course will be worth 12 credits with an 8 credit option, and will meet Tuesdays and Fridays from 9 a.m. to noon for seminars and from 1 to 3 p.m. for lectures and research workshops. A research paper will be due at the end of the quarter. Faculty sponsor is Irwin Zuckerman. Those interested should call Nick Keyes at 943-9590, or Chris Darrow at

Apples going to waste?
The Organic Farm can put them to good use. Contact Susan Moser, Michael Berg or call 866-6000 ext. 6160, 6161 or 6089.

Welcome Back !!!
Come see us at our new location...
Natural Fiber Fabrics
Sewing • Alterations • Instruction
Lady Lynn's
Mention this Ad and get 15 off your first purchase!
335 Division NW, W. Olympia 943-3074
Mon-Fri 9:30-5:30, Sat. Noon-5:30

POSITIVELY 4th STREET
WHERE CAN I GO TO...
POSITIVELY 4th ST
THAT'S RIGHT, THEY SELL ROCK-TARS
I'LL BE JOGGING, HEY GREENERS!
208 W. 4th AVENUE OLYMPIA, WA 98501 PHONE: (206) SUN-TAPE

Wedding Photography
by Robert Higgins
\$150 and up
call 1-736-9447

WRITERS' BLOCK CURED
Send \$2.00 for catalog of over 16,000 topics, to assist your writing efforts and help you beat Writers' Block. For info., call TOLL FREE 1-800-621-5745.
Authors Research, Room 600, N. 407 South Dearborn, Chicago IL. 60605

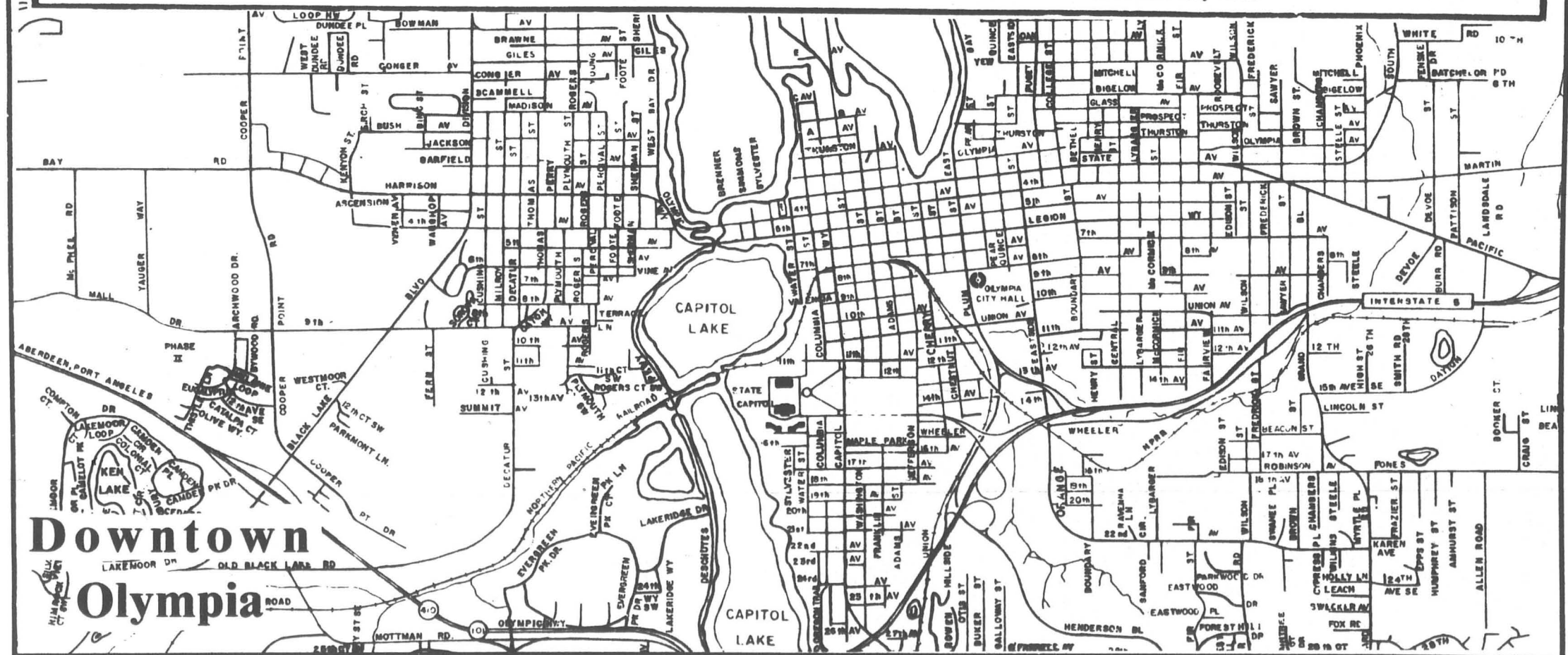
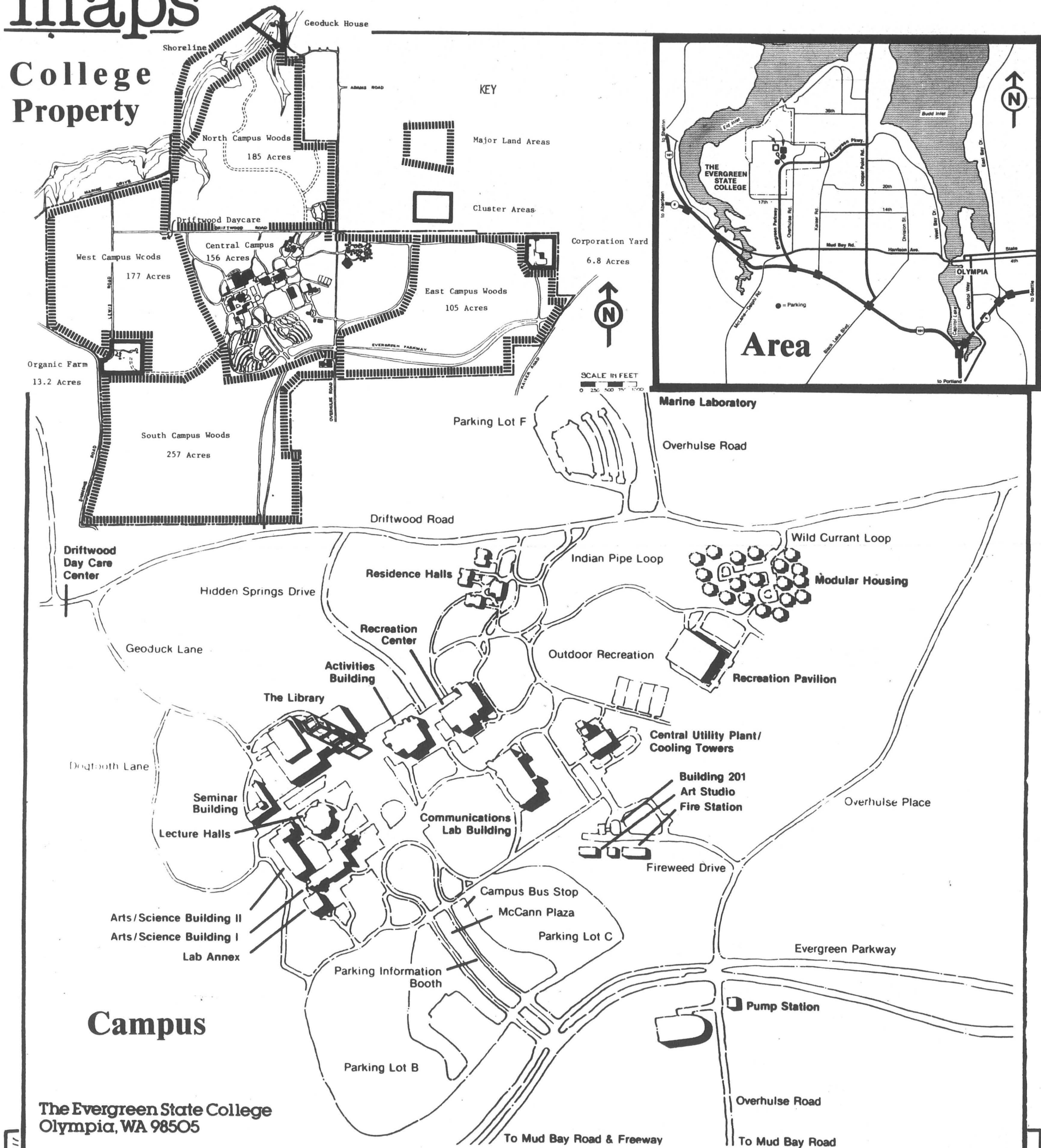
BLEAS:

It's the MUSIC 1985 - '86 Season
Olympia Symphony Orchestra
Nov. 2 - Beethoven's 9th Symphony with Masterworks Choral Ensemble
Feb. 3 - Kristi Bjarnson Cellist
Mar. 23 - Ruby Bailey Ronald Pianist
For Information; call 753 - 0074

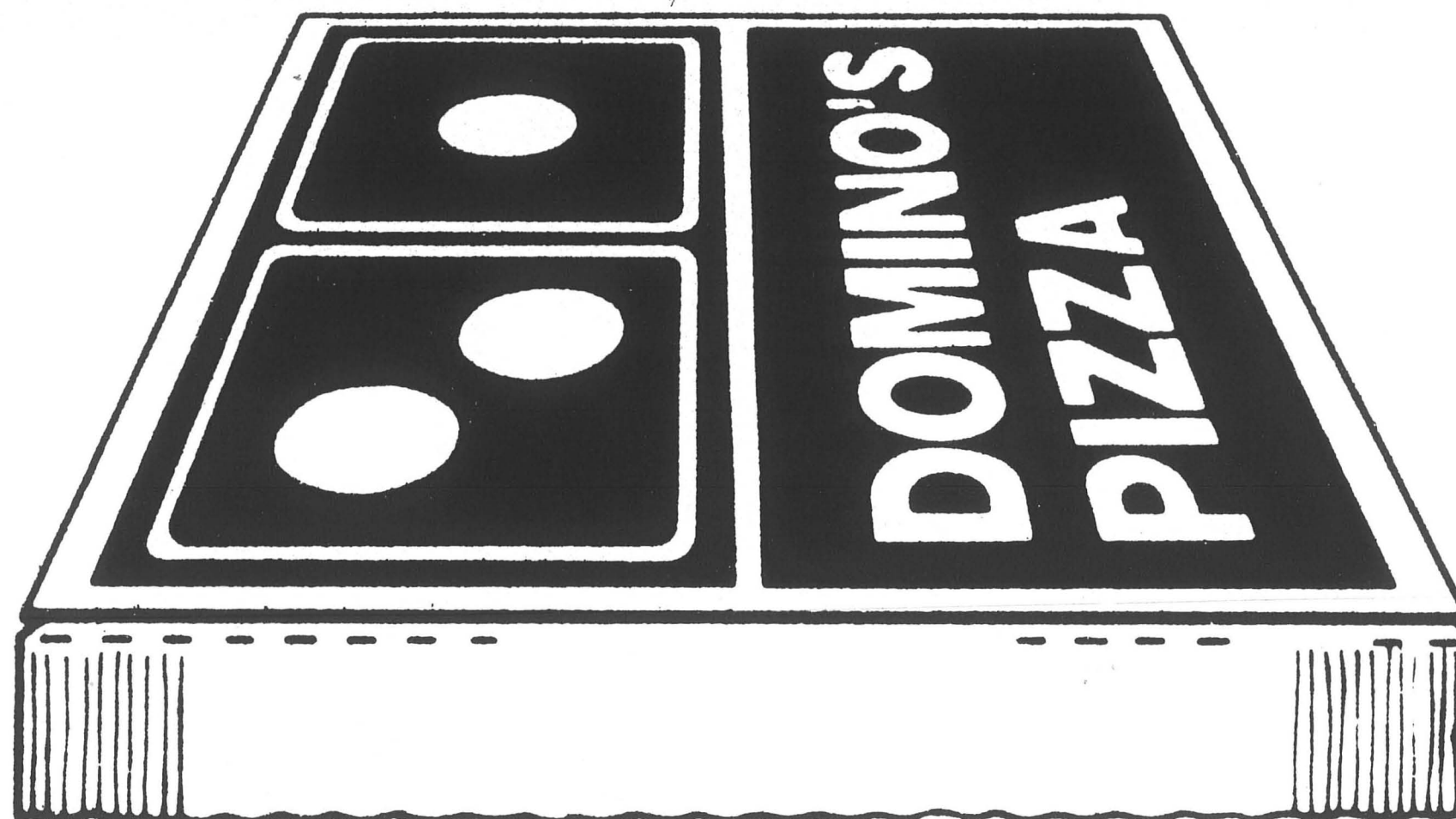
Season Ticket Order Form
Section A: \$2700
Section B: \$1800
Section C: \$1200
Please reserve seats in section for the 1985/86 Olympia Symphony Orchestra Subscription Concert Series.
The Olympia Symphony Orchestra
PO. Box 7635
Olympia, WA 98507
Mail checks to:

maps

College Property



DOMINO'S PIZZA DELIVERS FREE



Free COCA - COLA with every Pizza

West Olympia
754 - 6040

Lacey
459 - 9090

WELCOME STUDENTS

4 Free Cokes with 16" (LARGE)

2 Free Cokes with 12" (SMALL)



30 MINUTE GUARANTEE
Limited Delivery Area