

Nutrition Service Provided

Nutrition students in cooperation with the Health Services will provide nutrition information and a referral service to students, staff and faculty members. Objectiveness and attention to individual needs are two resources that the service will use to help sort through current issues and controversies in nutrition. Individuality is a key component of sound nutrition. The essence of "individuality" is that one persons health food can be another persons junk food.

Some of the services will be: individual needs counseling, computerized dietary analysis, extensive nutrition files, and nutrition information sharing and support group meetings. The files include such topics as Nutrition and Athletics, Children's and Women's special needs, Medical Self-care, Vegetarian Diets, Nutrition and Behavior, and many more. Also available is a growing list of local nutrition consultants and other health practitioners.

The approach of the center will be to facilitate nutrition awareness and self-help. For more information and appointments contact Health Services, 1st floor Seminar building, 866-6000 ext. 6200. Leave a message for Jean or Beth, leave your name and phone number. Hours will be flexible to meet your needs!

Sandal specialists.
Custom fitting and repair.

Birkenstock
BACK CARE
2528 SO. 38TH ST.
474-8228

Second Hand Gifts & Collectibles
106 1/2 E. Fourth
Old Town Olympia
943-5025
Hours: Mon-Sat 11AM-5PM

HOUSE OF ROSES
Presentation Bouquets
Plants
Gifts
Fresh Flowers
Over 125 Varieties of Balloons

The Evergreen Library: A Pictorial

Welcome to the liveliest academic library on the West Coast — maybe in the whole country! We're proud of the service we provide for you and we're always willing to hear your suggestions on how our services can be improved. Check us out. Use the resources for learning, fun, curiosity.

You'll find **The Library Annuary**, an in-depth introduction to the resources and the people who work here, to your right as you enter the library. It will give you the latest scoop on how to get reference help, how to use the media facilities, how to check out a film or slides, how to get materials on Interlibrary Loan.

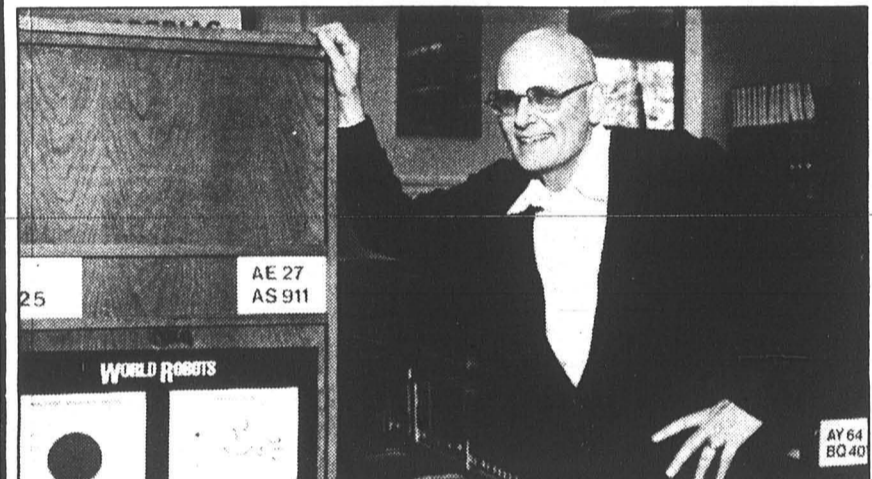
Susan Smith
Dean of the Library



Administration: from left to right, Susan Perry, Al Warber, Judith Espinola, Cheryl Thurston

Administration

We folks in the main office answer correspondence and the phone, maintain the files and monthly time records, build and balance the budgets, pay the bills, provide leadership for long range planning, make decisions, call meetings and occasionally call somebody on the carpet.



Malcolm Stilson, Head of Reference

Reference

There are many ways of approaching various subjects and there are numerous avenues of researching a topic. The reference area provides you with guidance in finding the best ways and most useful tools for research.



Raul Huerta, Non-Print Librarian

Non-Book Reference

The Evergreen Library is exceptional in the variety of materials other than books that are available for you to check-out. There are films, slides, tapes and records, games, maps, molecular models, and even art prints. Things that you might not be able to buy, but that you can borrow! So check into the library and check out the "non-book" collection.



Circulation: from left to right, Niles Reichardt, Gretchen Hendricks, Faith Hazenhofer, Julie Herbert.

Circulation

The circulation desk is where you check out library materials, recall circulating items, pick up interlibrary loan and reserve shelf materials, and request special services such as recalls or searches. The staff will try to answer your questions and help you with library-related problems.



Left: Linda Fraidenburg, Periodicals. Right: Lucy Enriquez, Documents. Periodicals/Documents

The Periodicals/Documents area provides access to over 1,500 magazine and journal titles and thousands of U.S. documents received through the depository program. Back issues of periodicals are available on microfilm and copying facilities are provided.



Inter-library loan: left, Andrea Winshop; right, Linda Tyler.

Interlibrary Loan

Interlibrary Loan provides you with access to materials from over 2,000 libraries. If our library doesn't own what you need, I.L.L. will find it for you.

Library Hours:
Monday — Thursday 8:45 am — 10:45 pm
Friday 8:45 am — 6:45 pm
Saturday — Sunday 11:45 am — 6:45 pm
(holiday and quarter break hours vary)

Media Services Hours:
Photo Services: Monday — Friday
10:00 am — noon; 1:00 pm — 5:00 pm

Money Available For Library Purchases Job Opportunity

Money is available to purchase resources not presently in the collection of Daniel J. Evans Library which members of the Evergreen Community suggest. All purchase requests must be signed with the name or initials of the person originating the request to comply

with good accounting procedures. Library Purchase Request forms are available at the Reference and Circulation Desks of the Library. Reviews, advertisements, publishers' catalogs, etc. may be used as purchase requests if they are signed/initialed. All forms of purchase request should be turned in at the Reference Desk. If you wish to be notified when the resource is ready to circulate, please add "notify" after your signature/initials. Thank you very much for your cooperation.

Career Planning and Placement has two workstudy positions still open. Needed still is a Resource Librarian and one Research Assistant. If you want a job while being able to check out career opportunities, come on down and see us at Career Planning and Placement. We are located on the first floor of the library building. X6193.

Guide to Services and Personnel



Media Loan: left, Rick Anderson; right, Allegra Hinkle.

Media Services

At Evergreen, students, faculty and staff have access to media equipment for use in all sorts of academic projects. The Media Services area includes The Media Production Center, Electronic Media, and Photo Services. More importantly, you have access to staff knowledgeable in all areas of production planning and production ready to help you prepare programs for use in classes and portfolios.



Photo Services: left to right, Thomas Anson, Woody Hartzel, Tracy Hamby, Randel Barbera.

Photo Services

Photo Services offers custom production services and technical assistance for students, faculty and staff. Whether you have a quick question or a major academic production project, the experienced staff at Photo Services can either provide the answer or tell you how you can save producing your own materials.



Acquisitions: left to right, Jaccie Trimble, Louise Cothany, Shelly Swelland.

Acquisitions

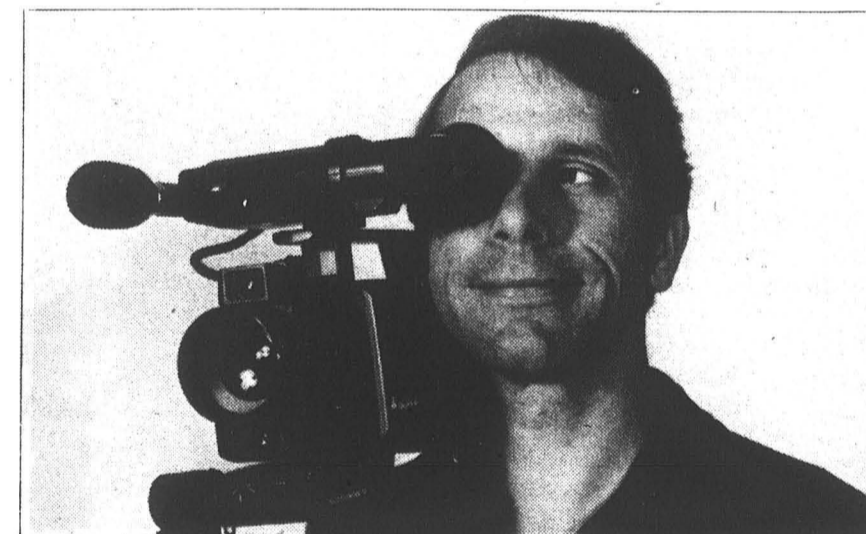
Acquisitions buys all of the print and non-print materials for the library collection. You can be a part of the process by filling out and signing "Library Purchase Request" forms for items you would like to see added to the collection.



Electronic Media: left, Dick Fuller; right, Ken Wilhelm.

Electronic Media

Electronic Media encompasses the college's audio and visual production facilities located both in the Library and in the Communications Lab Building. We have some of the best equipment available, housed in custom designed facilities, with professional staff providing access and instruction.



Media Production Center: Wyatt Cates

Media Production Center

The Media Production Center has the equipment you need to transform your raw media materials into finished products for your program portfolio, or personal project.

Media Production Center: Monday — Friday
11:00 am — 5:00 pm

Electronic Media: Monday — Friday 9:00 am — 5:00 pm

Master Control: Monday — Friday Hours to be posted

Media Loan Hours: Monday — Friday 8:45 am — 4:00 pm

Washington State Library Audio/Visual Services:
Monday — Friday 8:30 — 12:00; 1:00 — 4:30



Processing/Cataloging: left to right, John Crosby, Sarah Petersen, Kelley Emmons, Lorri Trimble, Michael Hester, Rich Edwards.

Processing

The Processing Area receives books from Acquisitions and prepares them for circulation. This entails ordering cataloging on an automated data base, typing labels for the spines of books, property stamping books. We also bind and repair damaged books.

Cataloging

Cataloging is in the business of making library materials accessible through the card catalog. We describe items in terms which are useful to the maximum number of users, and which conform to standard Library of Congress practice. Determining who is responsible for a work, choosing the subject headings which describe the work and assigning a call number to it are our primary tasks.

Stop Theft

by Kirby Erickson
Evergreen Campus Security offers several programs to help prevent theft and recover stolen property. All require student cooperation and awareness that prevention is the best solution to theft.

Operation ID involves marking valuable to deter theft and help in the retrieval process. If you live on campus an officer will come to your apartment and engrave numbers (usually your social security or driver's license number) into your items. Both the serial number and the engraved number will be entered in a computer file. If you lose anything, the two numbers will make it easier to trace the items to you. You'll also receive a sticker for your window to show any possible thief that you are protected.

Then if you do come home some day to find a hole in the wall where your stereo is supposed to be, you call the cops. The next day the burglar drops by the pawn shop to hock your stereo. The pawn broker checks the numbers as the law requires. The situation is now looking pretty calm for you and pretty hot for the burglar.

On the other hand, if you had not registered your stereo, you get to live that hole in the wall instead of your tunes.

Officer Darwin Eddy has recently been visiting the dorms and mods to mark items of value. You can call Security at extension 6140 or stop by Seminar 2150 to make an appointment.

A similar method to protect your bike will be available soon. A numbered license will be placed on the bikes registered with Security so they can be returned to their owners. Most bikes are stolen for transportation, not money. Unlocked bikes are often used as a cheap alternative to bus fare and then simply left. These bikes often end up sitting around the bushes until turned in to a police department. After a legal waiting period, bikes that cannot be traced to an owner are sold at public auction.

Campus Security is expecting these licenses and forms in the next two or three weeks. Watch for notices.

There is another preventative program that you don't have to wait for at all. Crime Watch has already stopped several attempts at vandalism or theft this year. It is a way for those who are concerned to help the community.

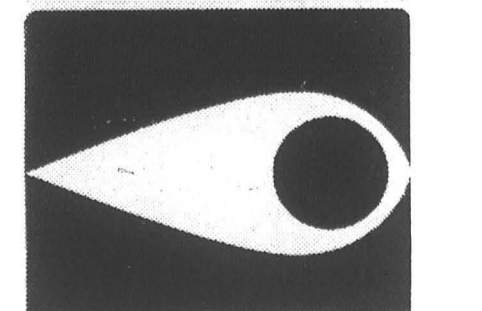
In Crime Watch two students who have completed a one and one-half hour training session spend two hours "walking the streets" once a month. They carry police radios and, while watching for disturbances, get a nice walk with a friend. The training includes surveillance, radio communication, witness perception and description.

The students are not directly involved in any arrests. They are only witnesses. If they see anything suspicious they contact Security who take further action.

If you are uneasy about walking someplace on campus at night, the students in Crime Watch or an officer from security will provide an escort.

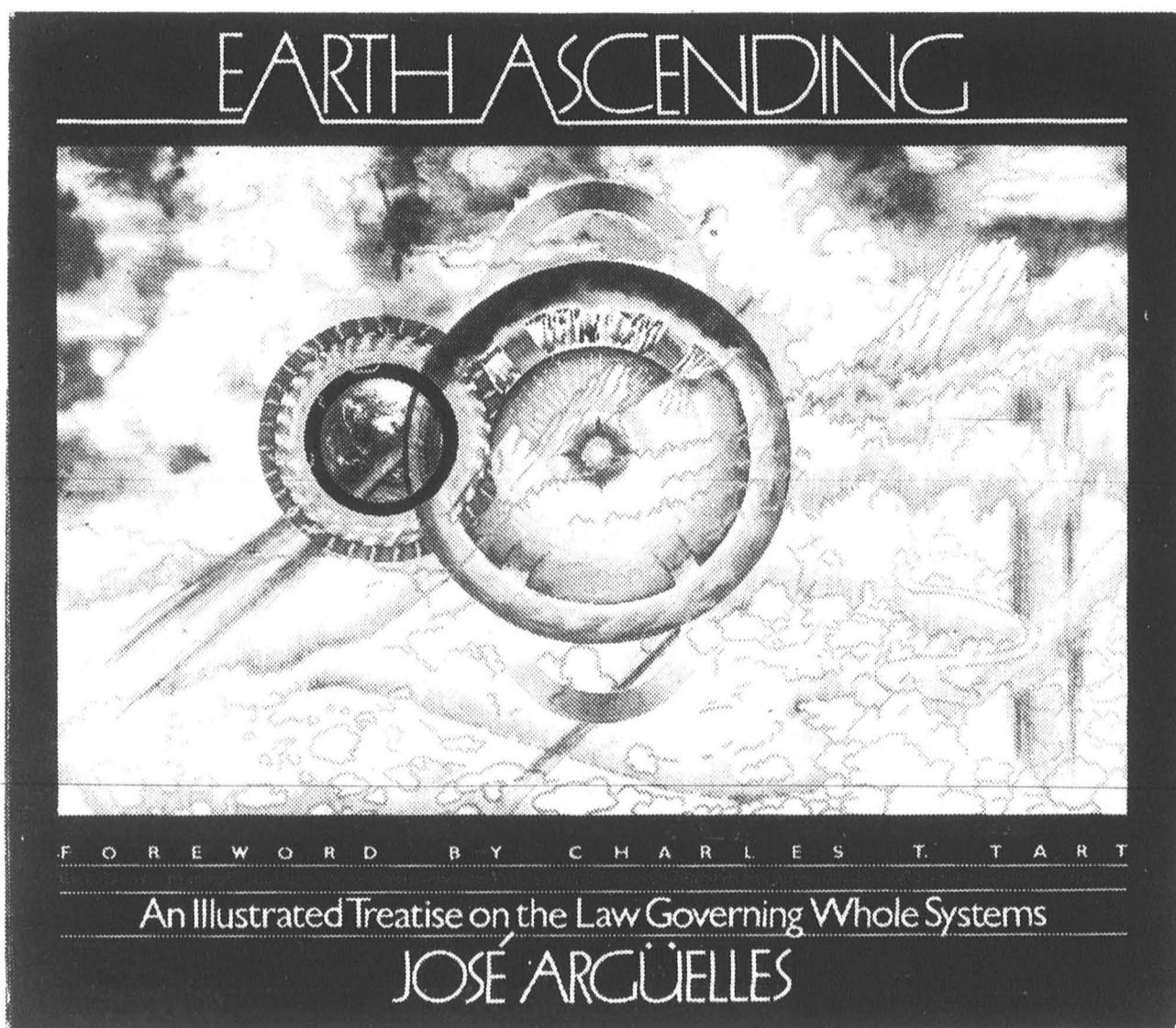
With a decrease in the number of officers on duty from past years there is an increased need for outside help. Contact Gil Cordova at Security or any Housing Student Manager.

WASHINGTON CRIME WATCH



REVIEWS...

Book: Intricate Creation Works Album: Copy doesn't



by Liz Nequette

Earth Ascending by José Argüelles, a former teacher here at Evergreen, is a formidable and fascinating work. Argüelles has created -- he would say discovered -- a method of explaining universal systems that works equally well on the molecular and the galactic levels. His treatise is copiously illustrated with original drawings and diagrams as well as reproductions of ancient explanation systems such as the Tzolkin, the sacred calendar of the Mesoamerican civilizations.

At first glance Argüelles' conception, and frequently his language, seem impossibly complex; the diagrams, or "maps" as he calls them, are minutely detailed, and he sometimes uses words in contexts which do not seem to correspond precisely with their dictionary definitions (I'm still puzzling over "synaesthetics"). However, the illustrations support the text in such a way that the whole becomes increasingly clear, and by the end, surprisingly convincing. I was delighted to find that, far from contradicting my own pet light-wave-motion theory of existence (a product of Mr. Fujii's twelfth-grade physics class -- ask me sometime), Argüelles' system takes a very simple binary mathematical model, like my on/off light waves, and expands it to the outer reaches of the universe.

Argüelles first creates a spherical model incorporating three levels of existence: heaven, the electromagnetic; earth, the gravitational; and man, the biopsychic. These levels comprise the three

dimensions of the sphere, "three mutually intersecting fields of resonance." This model is not only reflected in the earth itself with its atmosphere and electromagnetic radiation fields, but also in the atom, the solar-system, the whole pulsating, revolving cosmos. Changes within the model, such as sunspots, weather patterns, or biorhythms, can be broken down into simple binary fluctuations of on and off, positive and negative, yin and yang. More complex patterns consist of different arrangements of series of on/off fluctuations as exemplified by the *I Ching* kua, or hexagrams, pairs of binary triplets.

Argüelles draws a parallel between the 64 *I Ching* hexagrams and the 64 DNA codons by rendering the four nucleic acids into the binary code, any three of which in any combination create the "64 DNA codewords." Thus even the binary double-helix of the genetic code common to all living organisms functions within Argüelles' "law."

Central to Argüelles' system is the "psi bank," the "planetary biopsychic field," which is "both spontaneously produced by and coproductive of the binary resonant field, man and nature." The psi bank is a layer of electro-magnetic radiation surrounding the earth which, according to Argüelles, is simultaneously produced by "biopsychic" activity on earth, that is, the collective mind of man and nature, and by negatively charged solar radiation encountering a positively charged "galactic proton belt." This field corresponds to Van Allen's radiation belts at 2,000 and 11,000 miles from earth, discovered in 1953, incidentally, the same year in which DNA was discovered. The psi field "functions as both a shield

and as an electromagnetic membrane recharging and recirculating the atmosphere of the earth."

Argüelles makes his system relevant to the modern world through his five-fold model of earth's evolutionary pattern, the "holonomic equation." First "nature presents itself" in its pristine condition; "man learns from nature" up to the establishment of civilization; then "man transforms nature" by developing the industrial complex. We are at the end of this third stage now, moving into the stage in which "nature evaluates man's transformation," producing alterations in the psi bank and adjustments compensating for "man's disregard of the inherent sacredness of universal order." Finally man and nature are synthesized, the "planetization of man that follows the hominization of the planet." Man today suffers from "holonomic amnesia"; he has forgotten the interconnectedness, Argüelles' "resonance," of the natural and the supernatural worlds.

Argüelles' system is designed to help man overcome his amnesia and move him toward that final synthesis.

Earth Ascending deserves more than a cursory reading; it's the kind of book that gives a new understanding each time one opens it, a great addition to your new-age reading list.

EARTH ASCENDING:
An Illustrated Treatise on the Law Governing Whole Systems
by José Argüelles
Shambhala, Boulder and London,
1984
156 pages, \$12.95



by Roger Dickey

The Rave-Ups try to be every rock group in the last thirty years. Well, maybe not every, but they're obviously doing Buddy Holly, the Rolling Stones and the Who. Who doesn't? I wasn't even surprised to recognize their debt to the Ventures, but, my god, these guys even borrow from Herman's Hermits. After a while I expected to hear them copy the Monkeys. Maybe they did -- I didn't listen to the Monkeys then, so I wouldn't recognize them now. They did do the Byrds doing Bob Dylan.

The closest approximation of the Rave-Ups' musical sophistication I can think of is the Kinks on "You Really Got Me." In fact, at moments the Rave-Ups sound a great deal like the Kinks. In fact, at moments the Rave-Ups sound a great deal like everybody but the Rave-Ups. That's a shame. They're a talented and photogenic quartet. Chuck Wada seems to know which end of the guitar to beat on, he produces creditable versions of several different styles in the short space of six songs on this mini-LP. It's hard to tell how good Douglas Leonard is from this album; most of the time he's laying down a driving muddied bass line just like the guys he's imitating did. Timothy Jimenez has the rat-a-tat-tat drum down pat. It's the varied vocals of Jimmer Podrasky that stand out most. He manages a nicely nasal, vaguely British tone on "A Girl We All Know," and a mid-western American phrasing on "Right Now." He has an interesting voice with a good range and a knack for catching the little nuances of

clockwise from bottom left: Chuck Wada, Jimmer Podrasky, Timothy Jimenez, Douglas Leonard.

phrasing and accent that identify someone's style. The struggle for Jimmer and the rest of the Rave-Ups will be to meld all these pieces of other people's best into a style of their own.

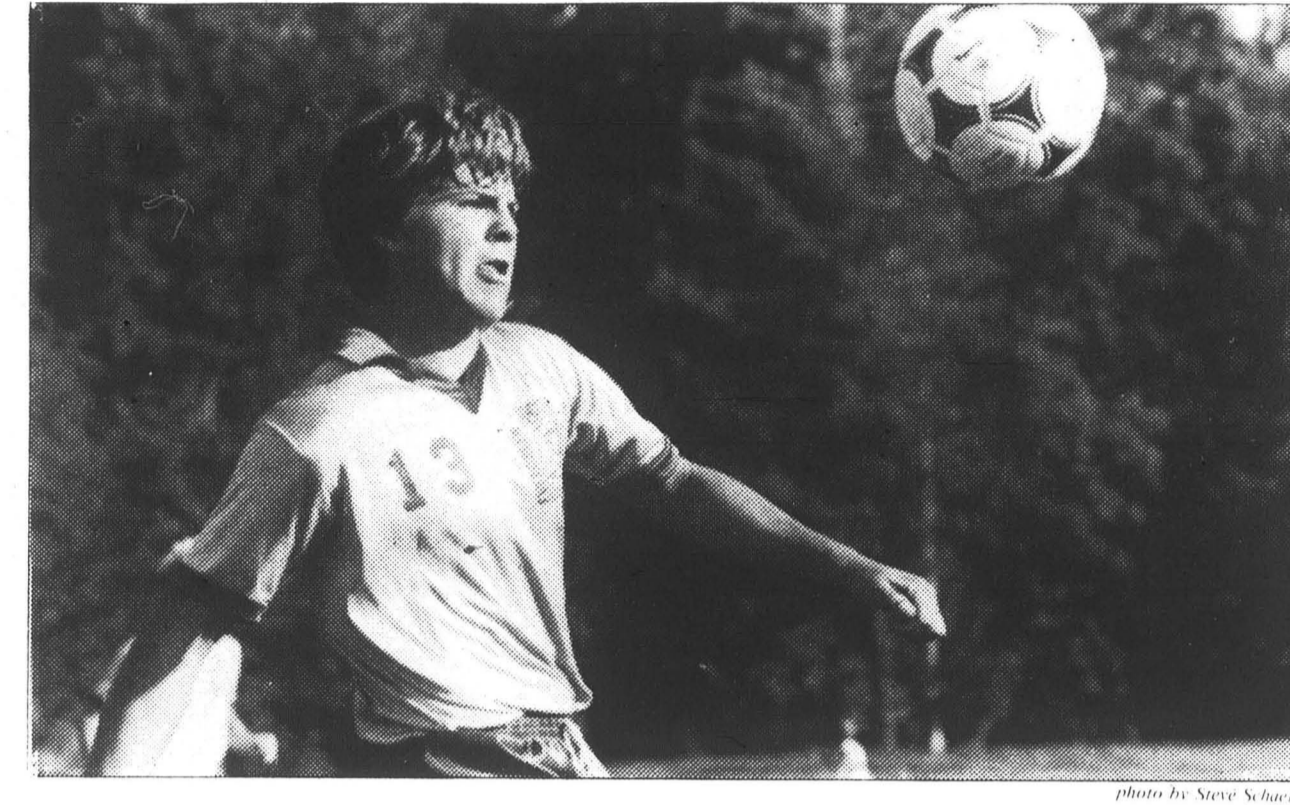
And to use more words. In three minutes and thirty-one seconds of "A Girl We All Know" the Rave-Ups manage, not only to repeat the verses, but to tell us six times:

I'm in love,
I'm in love
I'm in love,
I'm in love,
With a girl we all know,
I'm in love
I'm in love
I'm in love
I'm in love
Wo Oh Oh Ho Ho

It's probably inevitable that rock revert to minimalism every few years. We all like to identify with our musical heroes and there aren't many nineteen year olds who can play as well as Eric Clapton. Few of us at any age can even play a good air guitar to his works. What is not inevitable is that each generation offer only the sincere flattery of imitation to the greats and not so greats of the past. Until the Rave-Ups start writing and playing their own style of music they will remain a nice alternative to the endless replays of "Desperado" and "I Want to Hold Your Hand" that most club bands do.

If the Rave-Ups find their own music you'll be hearing more of them. As long as they're writing new pieces of someone else's repertoire they'll remain a nice little club band to play Audio-Charades to: "Sounds like..."

Soccer Men Won Twice Last Week



Gary Burris

The TESC men's soccer team improved its record to 6-2-2, with two wins during the week of October first through the seventh.

The geoducks first win came on Wednesday as they avenged an ear-

ly season loss to Seattle University by scoring three unanswered goals and beating S.U.. The first goal came in the 22nd minute as Jim Leingang gave a lead pass to Tim Joyce. Joyce put the ball into the right side of the net from about ten yards out.

On a free kick in the 57th minute Evergreen scored again. Rob Becker alertly placed the ball quickly and tapped a shot into the left side of the net. It was Small who scored again two minutes later. Tom Boatright gave a nice pass to Small who blasted another rocket. This goal was from twenty-five yards out and capped a 3-0 upset over Seattle University.

First Year Soccer Women Spark Team



by Cath Johnson

Freshmen play a vital role for the Geoducks.

They make up one-half of the twenty-two member squad. They have scored all but one of Evergreen's goals this season. They are a talented group. Their experience playing on high school teams and State select teams has put six of them in the starting line-up. They are all classmates and new to Evergreen. They are freshmen and are finding collegiate academics, life, and soccer to be a very demanding juggling act.

"I knew it would be a lot of hard work and take a lot of my time," said Maria Gonzales (Arlington), the Geoduck's leading scorer. "But, it's been even harder than I thought." Coach Tamar Chorten commented, "Imagine, not only are these women adjusting to and coping with the rigors of Evergreen's academics and living away from home for the first time, they also are putting in up to twenty or more hours a week working on and playing their sport. It's very hard on them."

In spite of these demands, these athletes are a dedicated bunch. Working harder than ever, the Women's team approaches mid-season this week. Their overall record stands at 2-5-1. So far, the scoring spotlight has been focused on the freshmen. Maria Gonzales has scored three goals while classmates Tina Bennett (Renton) and Mickey Clongier (N. Thurston) have scored two and one goal,

Small at forward.

The geoducks won again at their home coming game last Saturday. The team faced Trinity Western of British Columbia. Roger Becker opened the scoring two minutes into the game. A corner kick was taken and after being kicked around a bit was in Becker's possession. He perfectly placed a ten yard shot into the net.

Kevin Bell scored TESC's second goal nine minutes later. Roger Becker gave Bell a lead pass on the right side. Bell took a close range shot, putting the ball into the left side past the beaten keeper.

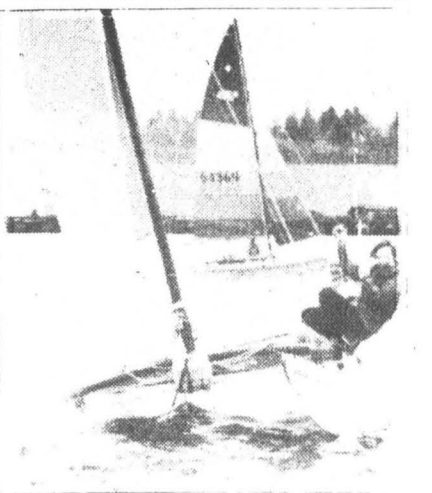
The geoducks third goal came on a corner kick taken by Scott McKinney. The kick was placed perfectly onto the head of a running Jim Leingang. Leingang scored a picture perfect goal from twelve yards out putting the ball into the lower left hand corner.

Trinity Western came back five minutes into the second half as George Marwieh dribbled into the eighteen yard box and let fly a shot through a crowd. The ball sailed by everyone into the lower left hand corner.

Just one minute later the ducks came back. Michael White took the ball into the right corner and sent a cross into Jim Leingang. Leingang trapped the ball off a bounce and put it into the right side for his second goal of the day and the Geoducks fourth.

The final score came in the seventy-third minute as Trinity Western's George Marwieh scored his second goal. Merwieh dribbled to about the ten yard line then flicked the ball over the TESC keeper who had no chance at saving it.

The ducks next two games are on the road at Whitman College on Sunday and at Linfield College on Tuesday.



First Sail Team Set

The Geoduck sail team begins racing this weekend when they travel to Seattle for the University of Washington kick-off regatta. This regatta is an annual event marking the official start of the collegiate yacht racing season. There will be eight to ten schools represented. Both Saturday's and Sunday's racing will take place on Lake Washington around a three or five mark course. Each school sails a number of short races, with a single race taking approximately thirty minutes to complete.

Thirty-six students turned up for the first day of sailing practice. While Coach Janet Welch was delighted in the numbers she admits, "It's tough to get everyone into boats. It's even tougher to choose a team to race." However, she has chosen the following sailors to represent Evergreen this weekend:

The skippers will be Gary Cartell and Dave Born, both returning from last year's team. The crew will be Tom Hawks and Joe Brady. "Each is new to the sail team this year, but each is showing a lot of talent," said Janet. "I'll be anxious to see how they do."

U.S. News & World Report presents

Metamorphosis

...or, "How to make a smooth transition from backpack to briefcase." You'll never lose touch with the outside world when you read U.S. News. Get straight to the heart of the news that matters with late-breaking updates from around the world... expert analyses on politics, business and the economy... forward-looking reports on trends that are shaping America's job market, the way we live, *your* future.

Subscribe to U.S. News at half-price. Just fill out and send in the coupon below.

Money-saving Student Coupon

YES, send me 25 weeks of U.S. News & World Report for only \$9.88. I'll save 50% off the regular subscription rate and 77% off the cover price. Payment enclosed Bill me

Name _____
 School Name _____
 Address _____ Apt. _____
 City/State _____ Zip _____

U.S. NEWS Mail coupon to:
 U.S. News & World Report
 2400 N St., N.W. Room 416
 Washington, D.C. 20037

Listen for the News Blimp on KAOS. Brought to you by U.S. News & World Report.

Less than 40¢ per week

ENVIRONMENT

Puget Sound Changes

by Robert Healy



file photo

When the last glacier, the Vashon, retreated from this area about ten thousand years ago it left the dredged out, water-filled basin we now call Puget Sound. Washington's inland sea, Puget Sound is a microcosm of our globe: it contains the same proportion of land to water as does the earth as a whole.

The Sound, with a surface area of 2,000 square miles and about 1,200 miles of shoreline, acts as a moderator of climate for the region surrounding it: temperatures vary from 45-60 F a relatively narrow range.

For thousands of years, before white settlement came to the Puget Sound basin, the Indians here lived a hunter/gatherer lifestyle in the region. Approximately 100 small tribes lived along the shore of the Sound.

Shellfish were a major component of the Indian's diet and included barnacles, mussels, oysters, and four types of clams: butter, rock, horse, and geoduck.

The Indians also fished, largely using three techniques: troll fishing, still fishing, and gaff-hook fishing. Salmon, trout, and herring, among other species, were abundantly available and not adversely affected by this predation. Nor was there much habitat disruption by humans.

Seals and other marine mammals, including whales, were common in Puget Sound and were occasionally hunted by the Indians.

There was little biological or economic change in the Puget Sound region before Captain Vancouver "discovered" it and named the body of water he saw after his officer, Peter Puget.

In the 200 years since this time, however, Puget Sound has experienced a great degree of biological change, adversely affecting it and changing it forever.

In the early nineteenth century Puget Sound supported a large population of *Ostrea lurida*, the Olympia oyster, and expeditions seeking it out for the markets of Portland and San Francisco began to occur regularly. With the expeditions came white settlers.

With the settlers came change to

the region, change that is continuing today, change that has taxed the good health of the Sound.

The first insult to our body of water was that of pulp mill effluent, or sulfite waste liquor containing sulphuric byproducts and wood particles. Marine life was starved or suffocated as a result of this sulfite waste liquor pollution, so much so that ship captains moored in front of these mills to keep their hulls free of the barnacles that normally attach there. The Olympia oyster, which had grown in abundance here for thousands of years, began to die-off.

Puget Sound now has a surrounding population of 2.5 million people. Sediment run-off, human waste, organic and inorganic chemicals, radiation, and thermal pollution have all risen dramatically, affecting Puget Sound water quality, and hence its marine life.

Today Totten and Skookum inlets are the only bodies of water in which the Olympia oyster will grow to maturity, and these inlets are classified as threatened by the Department of Ecology.

Puget Sound seals have in their bodies the highest concentrations of PCB's (polychlorinated biphenyls) of any animal known.

Bottom fish in Elliot bay are classified as unfit for human consumption because of toxins contained in their bodies.

In the past year many Gray whales have died from unknown causes throughout Puget Sound. One scientist described their livers as "looking like jelly".

Locally, in June 1981, 40,000 dead chinook salmon smolts floated to the surface after being suffocated by a lack of oxygen. Three months later 300,000 fish — mostly herring — died.

Still, 10 million gallons of waste water flows through our local sewage treatment plant and on into Budd Inlet everyday.

Puget Sound has historically been a depository for undesirable wastes, as have many other bodies of water, with the effect of debilitating its most productive and sensitive areas and endangering the health of the people who swim in and consume from it. This downward trend began to reverse in the late 1960's, when citizen and government concern over

the quality of water in Puget Sound began to rise, and resulted in the 1972 federal Water Pollution Control Act, or the FWPCA.

Many citizens' groups are concerned with and support keeping Puget Sound clean. These include: Friends of the Earth, the Washington Environmental Council, the National Audubon Society, the Puget Sound Alliance, the Northwest Steelhead and Salmon Council, and aquaculturist lobbies.

The Puget Sound Alliance (PSA), which formed this year, was established to protect and preserve the Sound by acting as an umbrella and an advocate for all the clean-water interests in the region. By watchdogging the enforcement of existing water quality regulations and prodding government agencies to do a better job, the PSA may hence its important contribution.

A confusing compendium of government bureaucracies have jurisdiction over Puget Sound in some form or other.

On the Federal level is the Environmental Protection Agency and the National Oceanographic and Atmospheric Administration (NOAA).

In Washington state there are at least six agencies responsible for governing the Sound.

The Department of Ecology (DOE) is the agency primarily responsible for carrying out EPA directives in Washington State. It is also the major advocate of the FWPCA of 1972. The DOE is concerned with waters in the state from a water quality standpoint.

The Department of Fisheries is responsible for monitoring fishery reserves.

The Department of Natural Resources is in charge of state lands and waters for recreational, economic, and industrial purposes.

The Parks and Recreation Department is interested in water quality as it affects state park beaches.

Water Pollution Control Commission has both judicial and enforcement powers in regard to water quality.

The Department of Social and Health Services (DSHS) is charged with protecting the public health, and monitors the water for viruses such as polio and hepatitis.

News and Notes

GARBAGE rates were raised in Olympia last month for the expressed purpose of encouraging recycling and holding the City's use of the county landfill to a reasonable level. For more information on the City of Olympia's recycling program call 1-800-RECYCLE.

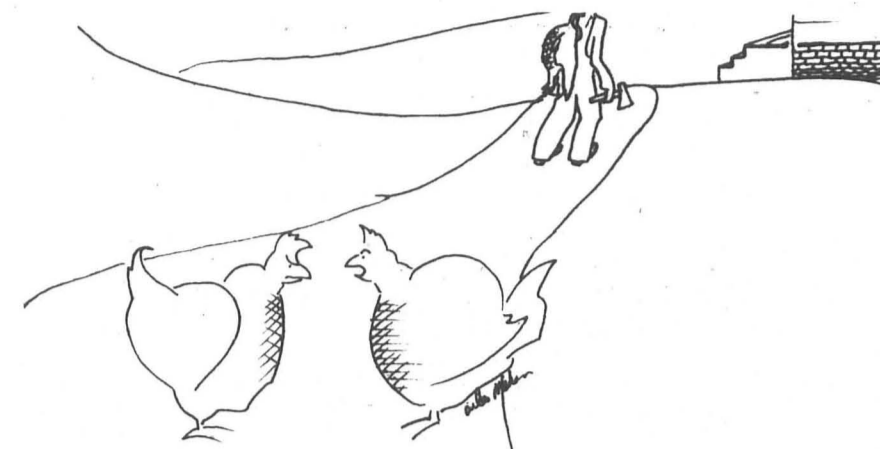
SLUDGE and wastewater alternatives conference held from 9 AM to 4:30 PM on Thursday, October 11 at the Westwater Inn will have a special free evening summary session at 7 PM Thursday night. The conference will consider sludge as a resource with economic and environmental value.

BACTERIAL CONTAMINATION has been found in Eld and Henderson Inlets and their surrounding shorelines by the Thurston County Health Department due to animal source contributions in natural and storm water drainages and malfunctioning septic tank drain fields.

PERCIVAL CREEK, recently threatened with the construction of a new West Olympia bridge, was partially protected by an out of court settlement thanks to the Black Hills Audubon Society.



DAMN COWS.



Farmers - can't live with 'em, can't live without 'em.



No, thanks. Just looking around.



And the lime lollipops in your left hand.

Your Professional Computer at a Home Computer Price
Microprocessor, Printer
Disk Drives & Cables
ALL INCLUDED



SANYO MBC 555 -
INCLUDES ALL THIS

- *MS. DOS
- *128 K RAM (expandable to 256)
- *Basic
- *Two Disk Drives
- *High Resolution Color Graphics
- *Wordstar - A Professional Level Word Processor with Spellstar and Mail Merge.

1899⁰⁰
1869⁰⁰
NOW \$1213⁰⁰

- *Easywriter - A Full Featured Word Processor for home or school.
- *Info Star - A Professional Level Data Base Manager.
- *Calstar - An Electronic Spread Sheet
- *A Zenith Monochrome Monitor
- *Legend 800 Printer

Evergreen State College Purchase Plan
Open to all Students, Faculty, Staff & Alumni

You can see it at the **TESC Computer Terminal Room** or come on in to our downtown store and we'll show you what's available.

Prices Range from \$1142 for a single drive computer, monitor and printer, to \$1795 for a system with a letter quality printer.

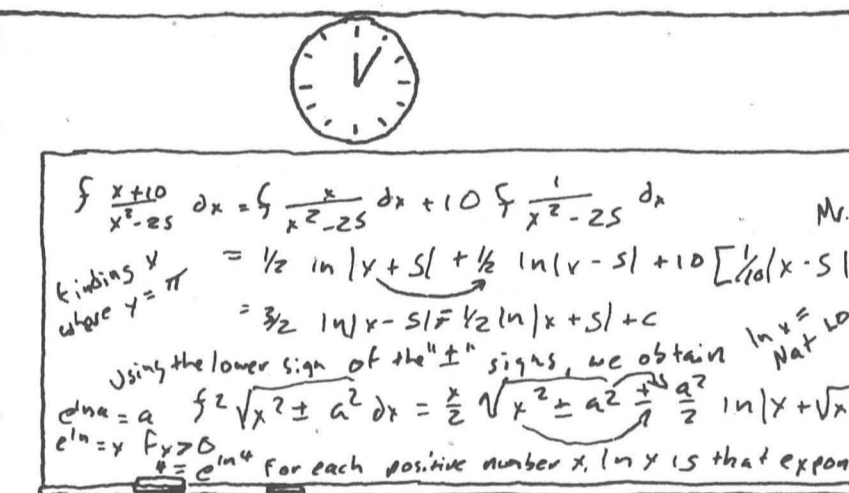
IBM Compatible

For more information, contact the Evergreen State College Computer Terminal Room or call us:

COMPUTER CENTERS

Authorized Sanyo, Corona & NEC Dealer

207 E 4th, Olympia WA (206) 754-9565



Aftermath

ALL WAYS TRAVEL SERVICE, INC.

ALLWAYS

WESTSIDE SHOPPING CENTER 943-8701
OLYMPIA, WASHINGTON 943-8700

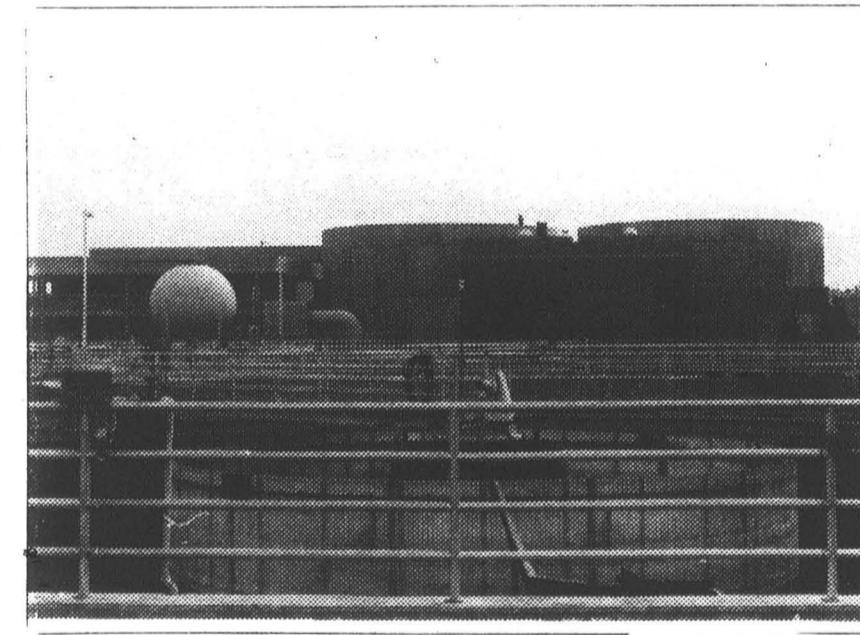


photo by Chris Curran

IN THE YEAR 1980 YOUR PRESIDENT I WAS ELECTED. ENVIRONMENTALISTS WARNED OF DOOM TO BE EXPECTED.

THE PROBLEM ITSELF IS NOT RONALD REAGAN. IT'S TOO MUCH GOVERNMENT, TOO MUCH REGULATION

IT'S TOO MUCH CLEAN AIR, AND TOO MUCH CLEAN WATER, SO I DECIDED IT WAS THE E.P.A. I WOULD SLAUGHTER.

WITH THE HELP OF ANNE BURFORD AND SECRETARY WATT, RITA LAVELLE AND THE REST OF THE LOT... I'VE SOLD NATIONAL FORESTS FOR THOUSANDS OF DOLLARS, AND NOW THERE'RE TOXIC DUMPS WHERE THERE WERE ONCE ONLY FLOWERS. FOR YEARS YOU'VE BEEN PUZZLED ABOUT WHAT CAUSES CANCER. NOW JUST LOOK IN YOUR WATER, AND YOU MAY FIND THE ANSWER.

SO IF YOU SHOULD FIND YOURSELF CHOKING AND SNEEZING, AT LEAST NOW YOU KNOW YOU CAN SEE WHAT YOU'RE BREATHING.

Wilderness Field Studies Earn College Credit

Natural history, field ecology, wilderness history and management. Courses for 1985 in the Sierra Nevada, Utah and Hawaii. Spring/Summer/Fall quarters.

For information, write or call:



Sierra Institute, Box C
Carriage House
UNIVERSITY OF CALIFORNIA
SANTA CRUZ, CA 95604
(408) 429-2761