

# Cooper Point Journal

October 13 1988  
Volume 19  
Issue 3



The Evergreen State College  
Olympia, WA 98505  
Address Correction Requested

Non-profit Organization  
U.S. Postage Paid  
Olympia, WA 98505  
Permit No. 65

Support our Software

A N D

Keep the Hardware

## Co-Op Internship Information Session

What does an internship mean at Microsoft?  
For starters, after you finish your stay with us,  
you'll be taking home the Macintosh® or IBM computer  
you used here. And it can mean a lot more. Come to our  
Information Session and we will tell you all about it.  
Door prizes available.

Friday, October 7  
1:00 p.m.  
Location: Library Rm. 1406A

**Microsoft** Co-op  
*We Give New Meaning to Support*



# Contents

Letters	p. 3
Governance proposals	p. 5
Rain forests	p. 8
Career column	p. 12
Angela Davis speaks	p. 13
Calendar	p. 14

# Politics, speech and money

by Darrel Riley

Free speech at Evergreen? What a concept! There is a lot of talk at Evergreen about Free Speech (always capitalized, of course) but not very much of it occurs.

When was the last time there was even a genuine debate here? When was the last time there was a figure from the Reagan Administration here? When was the last time there was a speaker in favor of joining the military? Has there ever been a, gasp, Republican here?

This school was founded, in part, by men of good conscience who wanted to see an alternative school where students could learn. Some of them were Republicans including former Evergreen President Dan Evans, now a Republican Senator. The fact that they were Republicans does not mean that they weren't men who understood the value of an education.

If a person does not espouse the same concepts you do that does not make them evil, nor does espousing your ideals automatically make them good. Good and evil are more complex topics than that.

The next issue of the *CPJ* will focus on politics. At least one article will be on the Iran-Contra affair. The Iran-Contra affair is one of the few events that transcends politics and strikes at the heart of ideals that bind Americans as people. I'm not ashamed to say that I'm frightened when I think that a man with so little respect for the concepts that our country was founded on might become

our next president. Where was the talk of "original intent" when the Iran-Contra affair was going on? The Iran-Contra affair was conceived and carried out by people who were evil, no matter what your political persuasion.

Is speech at the *CPJ* free? No. Look carefully at the First Amendment. It does not suggest that any organization must publish something, only that the Government cannot make a law "abridging" speech. Contrary to popular notion, the *CPJ* is not the Government. We are students struggling to put together the best product we can. We accept many types of work and use only our own judgement about what to print. However, that "freedom" to publish comes at a price. The price is ads.

Some think we should not accept ads that they find repugnant or immoral. That is their right. However, ads pay for the newspaper. I figure that most people have possession of an amazing facility in their hands. It allows them to turn the page on ads they don't like. It doesn't cost them anything and it's not even very difficult. If you don't want to turn the page you may even find that some of the information in that ad gave you additional information. Why is it that editors are accused of censorship for not accepting material, but not for spurning ads? There is something inherently unjust in that thought.

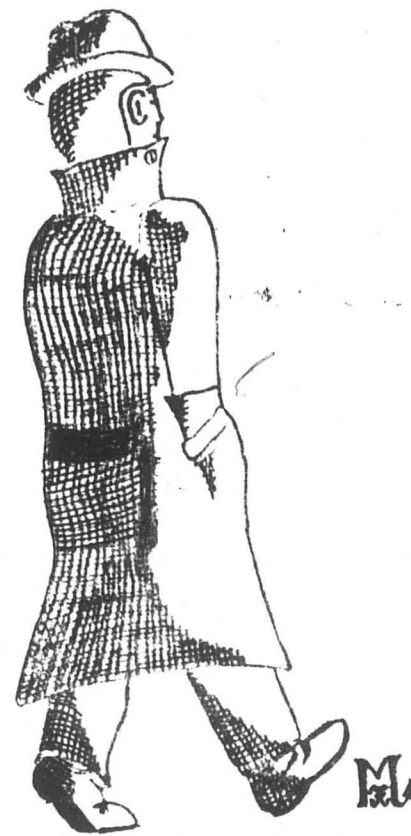
This discussion of free

speech should not obscure the fact that the *CPJ* staff is well aware of the dire financial straights of most groups. We offer 1/2 price ads to all student groups and non-profit organizations, and 50 cents less per advertising inch to on-campus businesses.

We also do layout and paste-up of the ads at no extra cost to those who need this service, thus making advertising more accessible to small local businesses and groups that cannot afford the services of a graphic artist. (Why do you think we're up so late? With this paper we are going to bed earlier than any paper ever before due mainly to the efforts of our ad staff, Chris Carson, Matt Carrithers, and Tanya Schouten. Praise Be!)

I've run out of room. I swear, it's either feast or famine and this issue is definitely a feast. In some ways this issue of the *CPJ* is the best I've ever seen. We have an interview with the pilot of the Space Shuttle Discovery, a feature article on the rain forests, and a lot of other very high quality work. I won't tell you what got left out, I'll save it for treats in the next issue. I hope you enjoy this issue of the *Cooper Point Journal* as much as I do.

P.S. A special thanks to Vikki Michalios for her cover drawing. It's fantastic, per her usual standard. She kept me on pins and needles waiting for it, but it was worth the wait.



# Letters

## Lots of money buys free speech

I have some questions about the *CPJ's* editorial policies which I hope you will clarify by responding through the paper.

1) Last year, authors and writers were continuously subjected to the often disempowering attitudes the *CPJ* staff, specifically the Editor-in-Chief, had for our submissions. Countless times authors and writers submitted articles only to find their article printed in the *CPJ* with a different title, new words, deleted sentences and paragraphs, etc. (Grammar and spelling corrections are expected.) In one case, there was an entirely new sentence added to a piece! What is the *CPJ's* policy this year concerning preserving the authors integrity?

2) You claim, "in consideration of free speech all forms of advertising will be accepted." This worries me. Free speech in advertising often means the ones with money speak freer than the ones without. For example; the U.S. Army and AT&T have more money to advertise than the Central American Action Committee. Who are we going to see more advertisements from in the *CPJ*? Who is freer to speak when you have to pay to speak?

Furthermore, General Electric and Microsoft can afford to advertise (to speak) in thousands of newspapers and magazines,

internationally. In fact, their advertising allows them to speak to several hundred million people. Does Earth Island Institute speak as freely? Who speaks more freely in the *CPJ*; Apple Computers with a 3/4 page ad on page 12, or our own homegrown Olympia Food Coop with a little box in the bottom right hand corner of page 11?

Should the *CPJ* support such inequities in free speech?

Perhaps advertising costs should be on an "ability-to-pay" system. Organizations with less money available for advertising should be allowed to pay significantly less than large multi-national organizations with billion dollar advertising budgets. These large organizations should pay significantly more for advertising and the extra money should be used to subsidize

smaller organizations with smaller advertising capabilities and a sometimes minority point of view. This would insure that all, both the rich and exploitative, and the poor and exploited have equal access to our "free speech" rights. Isn't Evergreen a place where we are committed to supporting

minority points of view as well as people and organizations that are systematically and institutionally oppresses by hostile environments (a hostile culture) and inadequate means (money) for self-expression?

Brian Hoffman

## Ads are moral question

What is meant by free speech? You say that, "In consideration of free speech all forms of advertising will be accepted." But you will not print all of the poems that come to you, or all the letters to the editor, and somehow the people of the community have gotten a third class ticket after ads and after students, somehow

disregarding the importance of what they say.

When you say, "Free Speech," you mean free to those who can afford it. Thus you accept that khaki green, that olive green, that puke green, that military green, yes those ads. I've seen what that military green does to people, I've seen how it breeds racism and sexism and how it enslaves people and yet I hear you will print an ad for it to protect free speech. Is that my free speech you speak of, or is it one of those greens?

It is a moral question. One that asks you if you really need to be so quick to sell, or is it to sell out. If you want to fight for free speech fight for free speech, not "bought" free speech. So I ask, please stop this laissez-faire approach to ads, at least until you stop editing other work. Is there anything I can say to make you stop such a policy; please stop

David Henshaw

## Greeners are paranoid utopians

A *CPJ* political analyst at Evergreen? Gimme a break!

Evergreen is so politically homogeneous, that any analyst not voicing the Evergreen philosophy of pseudo-radical, paranoid, anti-establishment utopianism would, at best, be completely ostracized. More likely, the "Evergreen community" would rise up to confront this threat to their narrow-minded radicalism (utopia

for a simpleton) with a McCarthy style witch-hunt.

After attending both the Brigham Young University and The Evergreen State College, I can tell you, you are more likely to meet someone with their own opinion at BYU. At TESC all you find is the same recycled conspiracy theories, and

ENDLESS WHINING.

Lee S. Pembleton

## The Staff:

Editor: Darrel Riley  
 Interim Advisor: Janis Byrd  
 Interim Managing Editor: Suzette Williams  
 Photo Editor: Larry Cook  
 Ad Manager: Chris Carson  
 Interim Business Manager: Whitney Ware  
 Interim Ad Layout: Matt Carrithers and Tanya Schouten  
 Calendar: Catherine Darley  
 Poetry Editor: Jeff Large  
 Artist in Residence: Ted Duncan  
 Contributors: Dan Snuffin, Jon Cawthorne, Jim Allbaugh, Brett Harris  
 Layout: Lara Mishler, Dan Snuffin, Audrey Anstey, Gayle Warner

## The policy:

The *Cooper Point Journal* (*CPJ*) editor and staff may amend or clarify these policies.

Objective:  
 The *CPJ* editor and staff are determined to make the *CPJ* a student forum for communication which is entertaining and informative.

Deadlines:  
 Calendar, Friday Noon  
 Articles, Friday 3:00 pm.  
 Letters to the Editor, Monday Noon.

Rules for submissions:  
 Submissions must be original. Submitting work which is not original is a legal, ethical, and moral violation, and an injury to those members of the Evergreen community who do complete original work.

Submissions should be brought to the *CPJ* offices on an IBM format. Any word-processing file compatible with WordPerfect 4.2 is acceptable. Disks should include a double-spaced printout, with the author's name, daytime phone number, and address. Disks will be returned as soon as possible.

Typed double-spaced copy with one-inch margins is

acceptable.

Handwritten copy is unacceptable.

If you have a questions about any of the submission policies please call the *CPJ* office. (We will accept work which is not in the proper format, however ask to be sure that we can use it.)

Because the *CPJ* is a college newspaper, priority will be given to student submissions, however all community members are encouraged to contribute.

Letters:  
 Letters will be accepted on all subjects. Letters may be up to 300 words. Letters will be checked for libel and may be edited for grammatical or spelling errors and for space.

Advertising:  
 All forms of advertising will be considered.

Objectivity:  
 The Editor does not believe in objectivity. Instead, the Editor and staff believe in fairness. We will make every effort to get as many viewpoints on a subject as possible. If you have an opinion on something you've read in the paper, please write and tell us.

## The provider of choices

Planned Parenthood

### To the Faculty and Staff of Evergreen

Since 1981 the faculty and staff of Evergreen State College have been significant supporters of the work of Planned Parenthood in this community.

You have recognized better than most the cause and effect relationship between:

- sex and pregnancy
- ignorance and vulnerability
- poverty and dependence
- political pressure and funding decisions

The medical and educational services Planned Parenthood provides are not the only answer to the plethora of social, environmental and economic problems that beset us at home and abroad, but if Planned Parenthood weren't serving nearly 3,000 patients a year in our clinic and reaching more than 8,600 Thurston County families and young people with our educational programs, those local problems would be markedly more difficult.

Remember Planned Parenthood of Thurston County when you make your payroll deduction during the Combined Fund Drive. We need your generous support.

Diana Larsen-Mills  
 Chair  
 Thurston County  
 Advisory Committee

Lee Minto  
 President  
 Planned Parenthood

## Contribute to your paper

You're off to a good start *CPJ*. Comparatively, the *CPJ* looks good! Keep it up! I know the paper will get better if you keep trying—if we keep trying.

To all of you people who did not write or contribute art for the very sad *CPJ* last year, here is your chance to make the paper worth something worth writing, drawing, and photographing for! You don't have to be a staff member of the *CPJ* to contribute to it. You just have to have a way of seeing things and a will to put it on paper and share it. Without your contribution the *CPJ* will begin its third year in a row as a very unfulfilling

college newspaper.

(I appreciate the hard work last year's staff put into the *CPJ*. The *CPJ* was sad last year not because they didn't work hard at it but because of very complicated politics which I pray we leave behind this year.)

Oh yes, for those of you who thought I was moving to New York, I did, and I moved back to Olympia when I realized how important my Olympia friends are to me. I found out where my home is. It's where my friends are!!!

All the best to all of my friends,  
 Brian Hoffman

## Where are the greeners?

In the last edition of the *CPJ*, Michelle Hofmann asked the question, "Where have all the Greeners gone?"

Well, I don't think it really matters.

The purpose of Evergreen, in my naive, first-year opinion, is to help you make an education for yourself, and not to shove another bunch of stereotypes and traditions (however hip) down your throat. An

"alternative" school must give an "alternative" education, not just the same one with a different face.

We "new" Greeners are the "real" Greeners. We are different from all v have come before us. We going to build our education ur way, and isn't that what we are supposed to do?

Eric Knudsen



# Letters

## Visions of the I Am

Last night I saw a vision, the Arboretum by the University of Washington was dried up. The water ways were caked with mud, and I saw no signs of life.

### Dog is owner's responsibility

In response to Meriah Daria's article "Danger to Dogs" in the October 6 CPJ, the casualty of the dog was not due to Evergreen's Pet Policy. The deceased dog's owner showed a lack of responsibility in not getting proper annual vaccinations for the pet. Distemper is preventable and only a caring owner could have saved this poor dog.

Suzy Maxwell  
Animal Lover

This morning I got up and prayed. I asked God what this vision meant. And he told me, "A great drought is going to encompass this vision?" He replied, "Tell everybody at your school about it." I asked, "What school?" He said, "Those who have ears to hear, let them hear. Those who have eyes to see, let them see. I am stands before the door, make straight the way of the Lord."

I asked, "Do You have for me to write this in a letter to the Editor [of the CPJ]?" And He said, "That is good, just as you have been told."

Evergreeners, I am real. Call on Jesus, before it is too late.

The joy of the Lord is my strength.

Christopher J. Smith



## Everyone came out Tuesday

National Coming Out Day was October 11, 1988 and commemorated the first anniversary of the March on Washington for Lesbian and Gay Rights. This day was for Lesbians, Gays, and Bisexuals to "come out" to each other and show solidarity. The Lesbian /

Gay Resource Center's table in the CAB was part of the National Celebration. We celebrated the Lesbian and Gay parts of our lives by being visible in a fun way.

by Gail Witte--Co-coordinator of the L/GRC

## October is the month for micro zappin'

by Brett Harris

I kid you not, October really is International Microwave Month. "To acknowledge the ease and convenience of the Microwave...the key to today's kitchen, as well as kitchens of the future." Just proving once again that if you dig around long enough in Chase's Annual Events you can find anything.

October is also National Pizza, National apple, National pasta and National Popcorn poppin' month; Warm up the microwave gang, it's gonna be a party.

Octoberfest is, of course, being celebrated in every city with a German ancestry all over the country.

October marks national car care month, as well as the Ugly

### Eddie Shaw plays blues

by Dan Snuffin

Are you ready for the blues? Eddie Shaw and the Wolf Gang, one of the coolest blues acts in the country, is bringing the blues to Olympia this Saturday at the Elks Club.

Eddie Shaw originally played the saxophone in a band featuring blues legend Chester Burnett, better known as the Howlin' Wolf. When the Howlin' Wolf died in 1975, Shaw formed the Wolf Gang, and with blues now on the upswing in America, his own band has become almost as famous as the Howlin' Wolf himself. They have performed everywhere from Carnegie Hall to Anchorage, Alaska.

Now the band is adding Olympia to their list. It's been years since a blues star of this magnitude has come to Olympia, so don't hesitate! The show starts at 9:30 on October 15. Tickets are \$6.00 at the door and advance tickets are available at Positively Fourth Street, Rainy Day Records, and Freeway Records and Tapes for \$5.00. Don't miss it!

Pickup Truck contest in Clinton, NC. A little closer to home, you may want to check out the San Antonio Rattlesnake Festival and International Gopher Race October 15th, maybe the gophers will be finished with their race by Oct. 22nd, which is set aside for the end of the world. World's End Day really is October 22nd, at least according to William Miller, creator of "Millerism", he believed that the world would end on this day; please note that he died in 1849.

National Grouch Day is October 15th, my suggestion; go aggravate your favorite grouch then tell them to have a nice day. After hassling your grouch offer to take them to the Great Teddy Bear Jamboree Show and Sale, also Oct. 15. If they still insist on being disagreeable take them to the Rattlesnake Festival.....

October brings with it the anniversary of the Stock Market Panic, the big one in 1929- note

**Rainy Day RECORD CO**

**OLYMPIA'S BEST SELECTION OF RECORDS • TAPES COMPACT DISCS**

*we carry many independent releases and love special orders*

**BEST SELECTION OF FOREIGN FILMS IN TOWN!**

Division & Harrison  
357-4755

the way they carefully avoid the word "crash".

Friendship and Good Will week is October 25th through the 31st, ironically October 25th is also the Grenada Invasion Anniversary..... There's hope, write to: UN Public Information dept., United Nations, N.Y. 10017 for information on Disarmament Week, Oct. 24th-30th.

Finally, I'll leave all of you in good spirits. The Great Pumpkin is for real, check out the Great Pumpkin Festival,

October 20th-30th in Bedford, PA, I'll be there with Linus, Lucy, Charlie Brown, Snoopy and all my pals. After we're done at Pumpkinfest, Fantasy Fest '88 will be in full swing in Florida, a three day adult Halloween party. That's October in a nutshell, stay tuned for more later this month.

Got an idea for a national holiday or week of celebration? Get them to the CPJ, please send your name and phone # or contact address so we can elaborate together.

**ART CARVED CLASS RINGS**

*The Quality. The Craftsmanship. The Reward You Deserve.*

**SILADIUM COLLEGE RINGS**

**NOW ONLY \$129!**

Monday & Tuesday • Oct. 17 & 18 • 10am-3:30pm

© 1988 ArtCarved Class Rings      Deposit Required

# Governance

## Three governance plans to assess

This summary consists of highlights of the "Sign," "Collective" and "Forum" student governance proposals.

Copies of the entire document will be available at the Student Communication Center after October 10. These are only excerpts.

Dear Students,

On behalf of the student governance staff we would like to welcome new and returning students to the 1988-1989 school year.

This summer, the Services and Activities board put together a group of students to construct an interim student governance proposal. This group met weekly along with other interested students to solicit ideas for an interim proposal and ways to implement it this year. However, we later decided that everyone should get a broader overview of a couple of other proposals. So we put together this document.

It contains condensed versions of the following proposals: the "Forum," written by former S&A staffers James Martin, Pete Stadler and others; the "SIGN" proposal, written by Goodman; and the evergreen student collective, written by Eric Kubner, Brian Hoffman, Lillian Ford and many others. Now we'll explain our process and proposed plan of action.

everyone to read and critique over Thanksgiving and Christmas break.

5. Winter quarter will be used to test the structure you suggested.

6. A student gathering/reality check will be held Wednesday February 15 to gather modifications and/or major revisions to the first draft proposal.

7. At the second week of Spring quarter, there'll be another all student gathering to take more input and describe the ratification process for the document students agree to.

8. If all has been going well we should be able to ratify the proposed Student Governance Structure two weeks later, on or about Wednesday April 19.

9. Only if and when students have expressed strong support for a governance plan will it go to the Board of Trustees for adoption. That would happen sometime in May.

We hope this proposed plan of action will be a democratic process which allows you to empower yourselves to create a sustainable appropriate Evergreen Student Governance Structure. Your help and involvement is essential to this process. Thank you very much for your assistance.

Thang Nguyen  
Vikki Michalios  
Jim Mateson  
Student Governance Team

### PROPOSED INTERIM STUDENT GOVERNANCE

The Student Forum  
Purpose:

The purpose of The Student Forum is to affirm the individual right of each student to participate directly in establishing policies and procedures associated with student life at Evergreen.

### Composition and Membership

The Student Forum shall be composed of a coordinator and eight members. Members shall serve one year terms renewable for one more year. The Forum Coordinator shall serve a one year term, nonrenewable.

### Selection Process

A student shall become a Student Forum member by completing one of three possible selection methods (tracks.) Of the eight positions on the Student Forum, two shall be selected by Consecutive Attendance, two shall be selected by Popular Support, and four shall be selected by Committee.

To qualify for one of the Track I memberships (Consecutive Attendance), an

interested student must attend at least four(4) consecutive Forum meetings. To qualify for one of the Track II memberships (popular support), an interested student must create, circulate, and submit a petition of at least 300 signatures of currently registered students.

### EXECUTIVE SUMMARY-- STUDENT GOVERNANCE PROPOSAL

To qualify for one of the Track III memberships (Selection by Committee) an interested student shall submit an application to and conduct an interview with the Outreach Committee.

### Duties and Operations

The Forum shall act as a policy and issues body, accordance with the principles upon which the Forum is constituted. The Forum shall meet at least four times per month during Fall, Winter and Spring Quarter. All meetings shall be open to the public, except for executive sessions on personnel matters.

The Forum shall also convene and attend a monthly or quarterly special public meeting for the express purpose of identifying, presenting, and discussing issues, policies, and procedures pertinent to students. Furthermore, the Forum shall attend a special public meeting within ten (10) instructional days upon presentation of a petition consisting of no fewer than 300 signatures by currently registered students.

The Forum shall review and have final approval on selection processes used to solicit and select students for memberships on DTF's, campus committees, specialty area meetings, the S&A Board, and any other decision making body that has a student member. The Student Forum shall also review, and if members so choose,

revise the annual S&A Fees budget before adopting it and presenting it to the Board of Trustees. The Student forum shall also act as the appointing authority for those exempt professional staff funded solely by S&A fees.

### Decision Making Process

Decisions shall be reached on a modified consensus basis (as currently used by the S&A Board.) If consensus cannot be reached after three efforts, a vote shall be taken. In the event of a tie, the Student Forum coordinator shall cast the deciding vote.

### Votes of Confidence

The Student Forum shall employ three types of Votes of Confidence; symbolic, removal and public removal. Symbolic votes of confidence speak to individuals or groups external to the student body. For example, a vote of confidence may be taken in reference to the college President's performance or specific stance on a given issue. Removal and Public Removal Votes of Confidence address the job performance of individuals representing students on governing boards and student staff and aim to remove the individual from her/his position.

### Forum Coordinator and Staff

The Student Forum shall select a Forum Coordinator for the following year during Spring Quarter. The Coordinator shall: organize and moderate all meetings; prepare agendas; retain minutes keepers, office assistants, and R&D members; be accountable for the dissemination of information on Forum activities and decisions; prepare the Forum's operating budget; and carry out all other responsibilities outlined in the sections on Votes of Confidence, Duties and Operations, personnel matters, and other sections as stipulated.

## Governance hours happen Monday and Wednesday

To the Evergreen Community, Last year, I approved a recommendation from the academic affairs area as well as the President's Advisory Board to change Governance hours from a one-day system (Wednesday, 10:30 am to 5 pm) to a three-day system (Monday, 3-5 pm; Wednesday, 3-5 p.m.; and Friday, 12:30-2:30 p.m.). The rationale for the change was that more effective and broader involvement in governance on the campus would result and that better use of academic space would occur. I accepted the recommendation on the

condition that this change would be implemented experimentally.

The experiment is not working. The academic administration has recommended--and the President's Advisory Board has concurred--that governance hours be changed to a two-day system: Monday, 3-5 p.m., and Wednesday, 1-5 p.m.

Please be advised that I have approved this change, effective Winter Quarter. Let's see whether this change works a little better.

Joseph D. Olander



# Opinion

## L/GRC Coordinator hiring is called unfair

by James Martin

Editor's note: The memorandum below was written on October 5, 1988. Since that time Gail Witte and Gene Barnes have been hired as co-coordinators. Kathy Ybarra had not received this memorandum at press time.

The memorandum which follows was distributed and discussed at the joint Lesbian and Gay campus community meeting at Thursday October 6, 1988. It is submitted here as information for other Lesbian and Gay people who were not present and for the benefit of the entire community. If you would like more information or like to lend your support, please contact Gene Barnes or Gail Witte at the Lesbian & Gay Resource Center Library 3223, 866-6000 extension 6544. Helping hands and letters of support are much needed.

Last Spring the Lesbian and Gay Resource Center (L/GRC) Advisory Board took the early initiative to interview and recommend new coordinators. In addition to enhancing the

opportunities of summer usage of L/GRC office, it was our hope that early selection would allow the L/GRC to be off the a running start from day one of the academic year. Since the time we recommended Gail Witte and Gene Barnes as the new coordinators, new and substantive issues have developed. These issues revolve around the fact that Gail and Gene have not been confirmed as coordinators for the L/GRC.

Kathy Ybarra, Executive Director of the Services and Activities administration, has saddled the L/GRC with a stipulative funding burden. Ironically, that burden is the result of the L/GRC's successful effort to find a coordinator who was workstudy qualified last year. The result of our decision to hire Jeremy Morrison is that Ybarra has now designated the L/GRC budget as a budget that requires a workstudy candidate. The L/GRC now finds itself with the burden of exhausting all possible avenues to find another workstudy qualified student

coordinator before the L/GRC Advisory Board's recommendations could possibly be accepted.

As things now stand, Ybarra has refused to ratify the L/GRC's choice of coordinators, and has posted their positions as vacant with the rationale of finding workstudy qualified students who may seek the position, regardless of the needs of the organization. This action, and its implications, raises concerns about the autonomy and independence of the L/GRC and its Advisory board.

A point of clarification before I proceed: I am not contesting the formal hiring Ybarra performs. For lawful reasons, someone has to technically perform this task. What I am concerned about is the way the hiring occurs and the effect that a workstudy funding stipulation has on a "minority" or "protected class group".

It is well known by both the L/GRC and Ybarra that

finding qualified and committed students who are willing to be publicly "out" is a unique challenge and an extra burden which no other campus group must deal with. To impose a workstudy requirement on the L/GRC introduces a substantial chilling effect on both the organization's capacity to plan and act in advance.

It also sends a contradictory message about the college's commitment to gay people and their unique needs. The cultural context of the gay communities unique needs are being willingly ignored and swept under the rug. On the other hand, we have the affirmative action and "protected class" rhetoric of the college and the Services and Activities Board, and on the other hand the discriminatory impact of the burdensome budgetary prerequisites. Further, what kind of administrative "expertise" are we, as gay students, getting for our money? If we give the issue come contemplation we can agree that naming the effect of Ybarra's budget stipulations as "chilling" is very accurate indeed.

Earlier, I mentioned the problem of a change in the hiring arrangement. Among the many reasons for the existence of the Advisory Board is that of selecting each year's L/GRC student staff. Ybarra's actions raise some serious questions about whose priorities and decisions get priority - are they ours or are they the ones developed to satisfy Ybarra's needs and whims? Are we not made to look somewhat stupid by conducting an interview process, informing the applicants of their acceptance and then to have Ybarra effectively tell Gail and Gene "maybe"? Where do we stand as a Board and on whose terms are we standing?

S&A board last spring any or all of your new procedural directives concerning hiring? If so what was their response?  
10. Has Dean Thomas approved any or all of your actions concerning those issues raised in this letter? If so what were his exact directives?  
11. Did you formally speak with student staff last year concerning your implementation of new procedures for hiring?  
12. Why are you implementing new, year binding procedures upon student organizations during a time when those organizations lack a forum to discuss your new policies, namely, a functioning S&A board?

## Maarava questions hiring

by Sam Segall

- Why did you refuse to reissue me a key for the office, or offer alternative means of entrance after you agreed that I should act as coordinator during the hiring interim?
- Why have you required Maarava's incumbent to submit an application for coordinator when you have not required the same of other incumbents?
- Why have you insisted on a hiring interview with you, while you have not made the same condition applicable to other staff hired for the year?
- Why are you not allowing Maarava the autonomy of running its own hiring process when you have allowed other organizational boards to run theirs?
- Why are you choosing members for Maarava's hiring board when you have allowed

- other groups to choose their own?
- With what authority are you ignoring the tradition of allowing student groups to handle their own hiring affairs, granted that they follow institutional requirements for fairness?
- Why did you tell both myself and Tina Bartlett that you are holding Maarava to the same practices as all other organizations when in reality this is not the case?
- Why did you not raise the issue of my return as coordinator last year during or after our budget proposal?
- Why was a memorandum issued by your office in support of group advisory boards and incumbent staff hiring, but later retracted?
- Did you discuss with the

**the Urban Onion**

I got what you need!

Breakfast Lunch Dinner  
Desserts

Mon-Thurs 7am-11pm  
Fri & Sat 7am-Midnight  
Hidden Away in the Old Olympian Hotel  
943-9242

**BLUE HERON BAKERY**

4935 Mud Bay Road  
Olympia, WA 98502  
866-2253

Come see our new outdoor brick oven and patio

**WHOLE GRAIN BREADS**

**ALTERNATIVE SWEETS**

NOW AVAILABLE AT THE BRANCH

Collectively run by Evergreen Alumni since 1977

## Three plans

The SIGN proposal  
STUDENT INFORMATION AND GOVERNANCE NEXUS

The students in each program seminar elect one representative from among themselves. The election would be by a simple show of hands, and at any time the seminar can replace their representative, and elect another. When a representative is temporarily prevented from completing his or her duties, a substitute will be elected. Students with independent contracts or internships will meet and elect their own representatives.

Student representatives shall have three duties. First, they shall see that the opinions of their classmates are represented whenever possible, usually at the General Assembly of Representatives. Second, they shall ask questions on behalf of their colleagues, and attempt to get answers. Third and most importantly, they shall fully inform their classmates on all issues of student concern.

The time commitment for an average representative is small. He or she must spend four hours a month with the General Assembly (which meets bi-weekly for two hours). During class hours (and perhaps after class) he/she would brief his/her classmates and hear their concerns.

A General Assembly of Student Representatives would meet bi-weekly for two hour sessions. This mammoth body would likely number over 200 representatives, directly representing all of Evergreen's 2800(?) students. Important student interest groups (like the First People's Coalition, etc.) will also have voting representatives.

Organizational functions of the General Assembly shall be completed by a small elected Executive Committee of six, perhaps working for credit.

### THE EVERGREEN STUDENT COLLECTIVE

Goals for the Student Collective

- To create a total learning environment at Evergreen so that learning about the Evergreen community becomes a significant and important part of an Evergreen education.
- To enable students to participate in creating college policy.

- To establish collective management of student and college affairs.
- To set guidelines for the Services and Activities Board funding policy.
- To confirm and/or recall students serving on the Services and Activities Board and in other volunteer and non-volunteer positions.

### Newsletter

The newsletter is a vehicle for students to express themselves through prose, poetry, art, photography, etc. The newsletter also serves as a historical record and archive for the collective and community issues at Evergreen.

The newsletter is an open forum for student expression. Students may submit whatever they wish, in writing or in a visual medium. The only limitation shall be a 250 word limit for written material or the equivalent column-inch space for visual material. Students may submit as many as two pieces per issue. The newsletter will be published by the Student Center and will be edited only for spelling (unless the student requests that it not be) and libel.

### Student Center

The Student Center is established to facilitate the needs of the students of the collective. The Student Center will be responsible for:

### Communication:

Gather, store and disseminate information of significance to students.

### Education:

Continuous education on how the collective works, including an orientation for new students.

### COMMUNICATION AND DECISION MAKING

#### Gatherings

Gatherings proceed in several different forms:

- Issue Gatherings
- All Student Gatherings
- Seminar Gatherings
- Spontaneous Gatherings
- Emergency Issue Gatherings

Selection, Confirmation and Recall

#### Procedures:

Confirmation of the S&A Board Coordinator and Confirmation of Board Members  
These students will be

chosen by the current method of selection. Once selected, they will be subject to confirmation at the All Student Gathering.

### General Policy Making For Services & Activities Board

General policy making for the S&A Board may occur only through a collective vote of

## hiring plans

The beginning of Fall Quarter is a busy time for the Student Activities Office (CAB 305) and Student Groups. Currently, thirty-nine student positions for twenty-five organizations are being filled. This means establishing hiring recommendation committee for each organization, and bringing everyone together for interviews. This is all coordinated and approved through the Student Activities staff.

Groups were offered an opportunity to set up a hiring process during Spring and three organizations did this. Recommendations form those processes were forwarded, reviewed, and acted upon this Fall by the hiring authority, as planned.

The general information about student employment (EAC 174-162-150) is available at the Financial Aid office and Student Activities office. The Student Activities hiring process was expanded Fall of '86 by Stone Thomas and Kathy Ybarra to include and ensure constituency and advisors participation in the student staff hiring.

No student will be eligible to hold any paid position for longer than two years. (6 quarters). All persons recommended for hire will go through an informational interview with the Director or Advisor prior to the hire. This is a time to share expectations, explore concerns and provide specific job duty information.

If anyone would like additional explanation of the hiring process please contact Kathy Ybarra, CAB 305, X6220.

**HOODSPORT WINERY**

8 PREMIUM VARIETALS  
4 NATIONALLY ACCLAIMED  
FRUIT WINES

SAVOR SOME OF WASHINGTON'S FINEST AWARD WINNING WINES  
AT OUR TASTING ROOM ALONG SCENIC HOOD CANAL (HWY 101).  
PLUS ENJOY OUR RASPBERRY WINE TRUFFLES MADE FROM FRESH  
DAIRY CREAM AND A BLEND OF SUPERIOR CHOCOLATES.

Highway 101  
Hoodspport 877-9894 Daily 10 am to 6 pm

**THE GLEN**

OFFICE OF A SUCCESSFUL  
RELIGIOUS SOCIAL STUDENT  
ORGANIZATION WITHIN CLOSE  
WALKING DISTANCE FROM THE  
EVERGREEN STATE COLLEGE.  
Come see us!  
3138 Overhulse Rd. NW  
Olympia  
866-8181



# World rain forests under seige

by David

The living Earth nourishes the mind and spirit. Take a short trip to the Olympic forest, to its western side. Take good rain gear and a lunch, hike a few miles through the stunning enormity of the rainforest. Hills covered with ferns struggle and delight your eyes. Massive, silent, cedars and Douglas firs emanate life.

Touch a tree. Sit underneath a huge, hollowed out log and wait a while. Soon, tiny creatures begin to stir around you. You may see countless, multicolored frogs or peaceful elk. Soon you will stop thinking in words and you realize you are a part of the forest.

What would the Earth be like without the living diversity of the plants and animals found in the forest? It would be sterile, like a blank room without doors or windows; monotonously and terribly empty. Losing the temperate forests to the logging industry means that our supposedly advanced culture cares more about short-term profit and consumer convenience than the integrity of the natural environment. That attitude isn't new, but it is still incomprehensible.

The disappearance of the tropical rainforests is now scheduled for around year 2040 unless the logging trends are reversed. Without the tropical rainforests the richest store of biological diversity will be gone forever. Every time you take a stride in your fancy tennis shoes, practice safe sex, or eat a papaya you have a rainforest tree of immeasurable value to thank for it.

As a child I was very lucky to have spent time in Peru. One of my most vivid memories is of experiencing the mystery and beauty of the Amazonian rainforests: huge, bright blue butterflies, dragonflies, snakes, all kinds of plants and the misty warmth of tropical trees.

That mystery is still left in bits of Mexico, Belize, Nicaragua, and Costa Rica. I recommend to everyone that they travel there to see the forests for themselves.

The forests are under siege. Only 5% of the Pacific Northwest's old growth forests remain. Only half of the tropical rainforests that existed at the turn of the century still exist. Every second 3 acres of forest disappear, 18 million (!) acres a year gone forever. At this rate no tropical rainforest will remain by the year 2075. When they are gone, also gone will be half of the Earth's species of animals and plants. The consequences for the Earth's atmosphere from burning biomass producing carbon dioxide are looking dismal.

I know you want to hear something more cheerful. Environmental catastrophes have a way of ruining the day, of making one want to hide under safe, warm blankets. We can either wring our hands and

think doomsday, or we can participate in the world movement to save the forests. We can refuse to be the generation that said goodbye to half of the Earth's living species.

Do you think writing letters is an exercise in futility? Consider: Coca-Cola was preparing to plunder the rainforest of Belize to establish citrus plantations (they own Minute Maid Orange Juice). In 2 months, following an Action Alert from the Rainforest Action Network, the executives had a mountain of letters from concerned people. Soon Coca-Cola was singing a new tune: no orange plantations. Coca-Cola is now divesting from Belize, and they've set up a wildlife refuge. Amazing!

There's been another victory. Burger King declared earlier this year that they would stop using beef originating in Central America, where rainforests are regularly burned by ranchers to create pasture land. They are currently being monitored for compliance.

In Borneo (a part of Malaysia), the Penan tribe has been involved in a bitter struggle to stop the logging in the rainforests they have inhabited for centuries. Eighty percent (80%) of the timber goes to Japan. Many Penan have been arrested while attempting to block logging roads. On October 31, 1988 forty three Penan will come to trial. Letters to the Malaysian and Japanese governments are crucial at this time to help influence the outcome of the trial and to stop the senseless deforestation of Borneo.

Writing letters is not everyone's forte. There are a lot other activities to become involved in. Here at Evergreen, the Olympia Tropical Rainforest Action (OTRA) is a channel for energy and ideas. Our purpose is to educate ourselves and the community about tropical rainforests, and to try to encourage positive changes through action and networking.

The group has put together

an excellent slide show to take to the local schools and institutions. A benefit dance is planned for winter quarter. The last dance that the group held, the Rainforest Dance last April, was a blast and helped the group over \$1,000 for rainforest groups in Brazil.

A raffle is now getting underway. Many members of the group are very interested in local forest issues. No one can just think globally and forget the nearby places we love. Inform yourself.

Do you wonder the origins of mahogany? Yes, it does come from the endangered tropical rainforests.

Did you know that each Burger King Whopper has been estimated to cost 55 square feet of rainforest to produce? Be a Whopper Stopper.

The current literature on rainforest issues and ecology is fascinating. In the Rainforests, by Catherine Caulfield, and Tropical Nature, by Forsyth and Miyata are both good reading and are readily available.

Everyone who is interested in rainforests should participate in OTRA. They meet on Mondays at 7:00 p.m., upstairs next to the Cooper Point Journal offices in the CAB building. This week they have been sponsoring are sponsoring information sharing activities. Tonight (Thursday, October 13) there will be a film showing and group discussion in Lecture Hall

3. Everyone is invited. For further information contact David (352-4451) or Blaine (866-8526).

Also, join Rainforest Action Network (RAN). They are doing a marvelous job of coordinating rainforest action groups around the world, and will keep you up to date with their monthly Action Alert and quarterly World Rainforest Report. Their address:

**Rainforest Action Network**  
300 Broadway  
Suite 28  
San Francisco, CA 94133

This week is a time to think, learn, and act. We are celebrating World Rainforest Week, October 9-16, together with concerned people around the planet.

Next month, November 18-20, the Chinook Learning Center is sponsoring a major international conference. It will be held at the University of Washington's (U-Dub) Kane Hall and is entitled, Decade of the Rainforest: Strategies for Tropical and Temperate Survival. The scheduled presenters are sure to be the catalyst for a tremendously interesting exchange of ideas. For more information call (206) 321-184, or (206) 467-0384.

If forest issues move you, you are part of growing world consciousness. The trees, it has been said, have walking, talking, thinking extensions of themselves. We are those extensions.



Photo by Larry Cook

When a Northwest forest has a catastrophe. Up comes the a devastating natural alder. The picture on this page catastrophe, like fire, it sends indicates that this forest was out the first line troops to probably clear-cut not long ago, repair the damage. The first the trees are alder and other line of defense is usually alder, deciduous trees that aren't very with cedar and fir following old. The forest is trying to regenerate itself.

A forest that has been clear-cut, that is a forest where all cutting forests is that often the trees have been removed at forest soil is very poor. The once, considers itself ravaged by cycle of decay that allows life

to exist in the forest is very fragile. If the cycle is broken it takes a long time to recover. In many cases the cycle is irreparably damaged. If the thin layer of topsoil is washed away before the vegetation can hold it down, the land may never recover. The problem with the tropical rain forests is that the climate is so extreme that the thin layer of topsoil gets washed

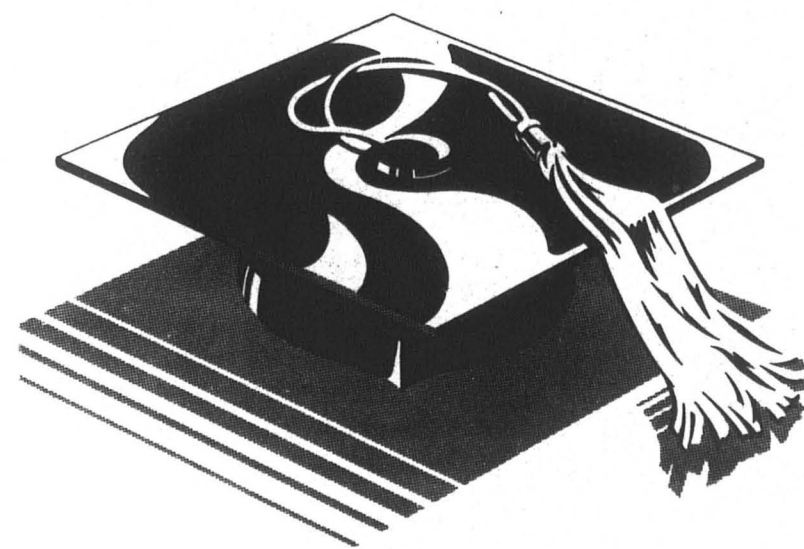
away before any vegetation has a chance to re-establish itself.

Time is getting short. Malaysia is not the only country exporting their logs to Japan.

The difficulty in the Northwest is that the logging exports often pay for the school construction projects. Who wants to argue with more schools?

Please, help preserve the forests

## OUR STUDENT LOANS MAKE THE GRADE.



Guaranteed Student Loans for graduates and undergraduates. No interest payments until after graduation or withdrawal. Up to ten years to pay back at just 8% annual percentage rate.\* Payments as low as \$50 per month.

Maximum loan amounts: \$2,625 Freshmen/Sophomores  
\$4,000 Juniors/Seniors  
\$7,500 Graduate Students

Ask your school's financial aid office for an application and details. Or call the friend of the family at (206) 464-4767. We're out to make your education more affordable.

\*This rate does not necessarily apply to students with existing loans.

**Washington Mutual**

The friend of the family

Washington Mutual  
Financial Group

**AVE 4th TAV**

**ROCKIN' RICKEY**

FRI. & SAT. OCT. 14th & 15th

COVER \$3.00

SWEAT BAND EVERY WEDNESDAY \$2.00

210 E. 4th • 786-1444





## Shuttle's Covey talks ecology, exploration

by Jim Allbaugh

On September 29, 1988 at 11:37 a.m. hope for the United States' space program was once again alive. The Space Shuttle *Discovery* bolted off Pad B at Cape Canaveral, Florida into outer space. The shuttle and its five astronauts left the earth without any mishaps or major flaws. The *Discovery* and its launch vehicle, a propellant tank and two re-designed solid rocket boosters, performed perfectly. This time there was no explosion in the sky; no fork-like cloud to horrify the millions of watching people. Fredrick H. Hawk (mission commander), Richard O. Covey (pilot), David C. Hilmers (mission specialist), George D. "Pinky" Nelson (mission specialist), and John M. "Mike" Lounge (mission specialist) must have let out a sigh of relief when they began to see the stars around them.

What thoughts raced through their minds of these five astronauts when they broke away from the earth's delicate atmosphere? Nobody, except a handful of men and women will ever truly understand the intense emotions they must have felt. The following is an interview with one of the astronauts. Richard O. Covey, the *Discovery* pilot, was kind enough to answer questions on the space shuttle program, space exploration in general, and the emotions felt during space travel. Due to space limitations the following is excerpts from the interview.

**How did it feel to take off?**  
Exhilarating. At first you think you control this awesome power, but in reality you don't. You can feel it pushing you down ... and once you are free of gravity it's great.... There is just a huge fire behind you and you can feel it pushing you up and up.

**What did you see?** I looked out the side window occasionally and could see the sky turn from blue to black. Once the solid booster rockets were free, everyone had a big-ass grin on their face. You could see [the] excitement in everyone's faces.  
**When will you be going up again?** Hopefully I will be a commander of a mission soon. If not I would like to stay with NASA, either as a manager or again, as a commander. It will be about a year or two most likely [before that happens].  
**What was the high point of your trip?** The high point was getting 8 1/2 minutes into flight and realizing that everything was going fine ... all was safe and fine. It was a great relief.

Another high point was when we deployed the satellite safely. There was no problem with that at all.

One thing that sticks in my mind is that when we flew over Africa and the Mediterranean ... it was perfectly clear ... beautiful view ... spectacular.

There are a lot of high points, they are all strung together. It was a beautiful path we took over the earth.  
**How is the earth looking from up there?** It's looking fine. It's a beautiful place ... there are some places that don't look so good, such as Southern Africa and South America, especially along the Amazon Basin. You could see the fires burning in this areas from slash and burning, not to mention the smoke. It wasn't a pretty sight. We have some photographs of it all. You really begin to realize how bad it is while up there.  
**Is it that obvious?** Oh yeah ... it's not a pleasure to see.  
**What was the low point of your trip?** The physical discomfort of the launch and of zero

gravity. You say to your body, "... just get me through this day, and I'll never fly again, I promise..." It's fund though. By the second day you feel fine and enjoy what you can do up there. Then you begin to remember how much you like it. That was the only real problem ... discomfort.

**In previous launches the shuttle had a more diverse crew. Different races and women were also aboard previous flights. This time around, however, there was no such diversity. Why is that?** There was no intention to have just an all white male crew ... no ... there was no planning to that, no forethought. NASA is color blind and sex blind, and I am quite sure of that. I don't think they excluded anyone. It wasn't a function of any forethought.

**What concerns do you have about the shuttle program?** Not enough spare parts to maintain the shuttle program....

**What is your reaction to SDI [Strategic Defense Initiative]?** The SDI is a good basic research program, it will in the long run, bring us some good technological data and materials. There will be some major technological spinoffs in the near future ... I think that as Americas we need such technological challenges that are set by the SDI program.

**Is the space shuttle truly safer?** For one thing the booster rockets are much safer. The design itself is safer and the quality of the boosters in production is as good as it can be. There are some major improvements in safety. NASA also knows it limits. We all understand the system better now ... now, there will always be risks ... any time that you are on a rocket you will have

risks... there is no question about that. We have all learned to operate in the range of what is acceptable and what is not.

**Why should humans explore space? Do you see any drawbacks to space exploration?** There are not drawbacks. Some people may say that space exploration is just too expensive. I disagree. The money that we [NASA] get is only a drop in the bucket ... it's only 1% of the national budget. People ask, "What can you get out of it?" Well, you can't really know what you're going to get until you find it. People didn't know what Lewis and Clark were going to find, or for that matter what Columbus was going to discover. Americans need to explore ... we always look down the street and around the corner ... and those countries that don't continue to explore and investigate lose prestige and self worth. Space is not the last frontier, but [for] right now it is and we shouldn't hold back in exploring it. Those who say it does not help the earth are wrong ... because it does. From space, you can see everything, and understand what we are doing to it and with it much easier. It is ... the frontier of choice. It does have a payoff ... but it [the payoff] is unknown ... We are just beginning to find it ... we as a country need to look forward and beyond.

**Is there anything else you would like to say?** A great country needs to do basic research of all things and not just space. We need to have a better way of determining what is going on in space and on earth, and space exploration is that opportunity.

## Opinion

### Space exploration vs. earth preservation

by Jim Allbaugh

Those people who read about it in USA Today were surely glad to read about its wonderful performance. TV was the eyes for millions, and as the shuttle went up, shivers went up the spines of those who watched. Tears could be seen swelling in the eyes of the thousands of people that witnessed the launch live in Florida. Those who watched the *Discovery* take flight from a distance of less than 7 miles could not help but gasp at the raw power of the flight before them. For this writer, who was there, there was much to see, and hear, and think about.

As the column of smoke rose higher and higher into the sky the building I was standing on began to vibrate, even the air seemed to shiver and move around me. Then all sorts of strange sounds reached my ears.

First, there was the sound of thunder. I immediately looked to the source of the thunder. How could the sounds of a thunderstorm come from something the size of an airplane? The sound could not be man-made. Only an angel, I thought, could summon that much power; that much noise.

Then there was the sound of crickets, or what seemed to be crickets, all around me. Looking around me I could see more cameras than human heads.

These were the crickets. The cameras clicking and whirring accompanied the new deafening noise of the white angel.

I peered back into the sky and saw the angel let go of its new-and-improved wings. People seemed to pant when they saw the wings tumble back to earth. It was at this moment two years ago when the American spirit had fallen from grace.

After that the angel was barely visible. It had become a small silver speck in the sky. The clicking and thunder began to stop. The momentary quiet was followed by another pandemonium. People began to clap while looking up at the empty blue sky. The clapping became applause. It seemed like a plea for the angel to come back and perform once again.

After the applause had stopped people began to murmur to themselves or each other. The excitement built. Many people laughed nervously while others yelled the words, "awesome!" and "spectacular!"

The shrieks of babies and whines of bored children came next. One child was fast asleep. Many others still looked up. Yet the shuttle was nowhere to be seen. Some faces looked concerned. Other faces were baffled. There were also those who looked just plain bored.

Finally, as we all began to

leave, someone told me that my baby brother had asked the question, "Any more fireworks?" Cute, huh? Later that innocent question made me think about what I had just seen, heard, and felt. That simple question affected me the most.

This child is only two and one half years old. To the two and a half year old, or to the seventy two year old this launch was, in the end, the same thing to both; a beautiful, magnificent, loud, shiny, and expensive firework. It wasn't an angel after all.

The launch was instead a show for the masses; a demonstration of America's brilliant technology. It was a show for the technological miracle. Yet, many would try to say it was more than that.

We have all heard the reasons why we should explore space. The Government insists that it is our national destiny. Major businesses explain the economic principles behind the need for space exploration. The mass media exclaims that the shuttle and America's might are back. American's have, no matter how rare the occasion, something to look up to.

These reasons have validity, but I began to wonder: what is there to gain? What is out there that isn't here?

Americans wants to voyage into outer space, that is for

certain. We seem to be fascinated with the vastness of space, rather than that of the earth. There are still many wonders about this earth about which we know very little. Those things that we have so little knowledge about are being destroyed and exploited faster and more efficiently than ever before.

Not only are we annihilating unknown natural marvels, we are turning our planet into one of those planets to which we so desperately want to escape. While we explore the heavens above, destroying the forests that sustain all life, thus making a living hell on earth. We explore immense dry riverbeds on Mars' surface, yet we do little to save our rivers and streams on this fragile microcosm. We peer into the depths of space, and yet dump thousands of tons of sewage into our deep oceans. While humans try to determine the deadly atmosphere of other planets, we are now discovering that not only is our atmosphere poisoned, it's disappearing! Soon we won't have to send people to Mars, we'll be living on it.

So, while Americans ask the question, "Any more fireworks?" perhaps we should also start asking the question, "Any more earth?"

## Bye, bye Evergreen Vancouver, hello VCRs

One year from now, The Evergreen State College in Vancouver will be gone. A few students will remain to complete independent study, a few will relocate to Olympia, a few will go elsewhere for their college education, and a few will continue to come to this building every week.

They will come under a different name. They will no longer be Evergreeners. They will be students of Washington State University. WSU is taking over is southwest Washington, and has already occupied the main floor of our building. WSU is short on space, they say, so one of our courses meets at a nearby community college and our S&A Board has resorted to meeting in the hallway. Why is this happening?

It was decided. Long before most of us knew or even imagined that our campus was in jeopardy, the decision had been made. The Southwest Washington Joint Center for Education, of which both TESC and WSU were or are members, probably had something to do

For awhile it looked like TESC might take care of the need for higher education is

with the reason. I really don't know. All I know is that for me, a dream has died.

southwest Washington. After all, there was the mother campus plus branches in Tacoma and Vancouver. For over eleven years, TESC served the Vancouver community. Now, the college is disappearing. No more liberal arts around here. No more evaluations. No more personalization.

Vancouver will have a university that uses VCRs to teach and speaker systems that boom out lessons despite the fact that the classrooms here

are only 20 feet by 20 feet, not giant lecture halls. I lament when I see the WSU population come to class, in their suits and briefcases, to go stare at a

video screen and listen to speaker sets. I lament when I read the WSU newspaper, ironically called "The Evergreen", which has four out of twelve pages devoted to competitive sports, not including the article about Cougar football fans bombarding WSU marching bands with ice and obscenities, and destroying band equipment.

I understand that this branch is closing. And I am sure that many people feel WSU

will do wonderfully here. However, I feel cheated. I feel like nobody asked us what we as students want. I feel that Evergreen is a real treasure and

I will deeply miss its presence in Vancouver. I fear that the people of southwest Washington

are losing, losing out to business interests. forced specialization, and fraternity mentality.

Though I understand the need for a signature, I prefer that my name be withheld. I have lost trust in the administration/security system at TESC and fear that a letter of this sort could mar my name if

I decide to go to the mother campus to finish that last part of my dream.

Student - TESC Vancouver.

**STUDENT BOARD MEMBERS NEEDED NOW - FOR DETAILS CONTACT S & A office CAB 305 X6220**  
DEADLINE - 2PM - WEDNESDAY - OCT 1988

ALL WAYS TRAVEL SERVICE, INC.  
**Always**  
943-8700  
Harrison and Divison

**RESEARCH PAPERS**  
16,278 to choose from—all subjects  
Order Catalog Today with Visa/MC or COD  
Toll Free Hot Line **800-351-0222**  
In Calif. (213) 477-8228  
Or, rush \$2.00 to: Research Assistance  
11322 Idaho Ave. #205-SH, Los Angeles, CA 90025  
Custom research also available—all levels



# Start developing a career

by Maureen Eddy

## ATTENTION EVERYONE!

For your convenience, Career Development is open additional hours from 5 p.m. to 7 p.m. every Monday and Thursday night. A resume counselor will be available to assist you during evening hours. Eventually, we plan to conduct some workshops during these hours. For example: Careers in Specialized Fields, Working and Studying Abroad, Burn-out Prevention, and Effective Interviewing. In the meantime, please take advantage of this opportunity to come in and browse through our Career Resource Library. Evening hours offer you additional opportunities to do your own career planning by using the SIGIPLUS.

SIGIPLUS is a computer software program designed to provide information in career and life planning. SIGI stands for System of Interactive Guidance and Information PLUS. SIGI offers help with self-assessment, search, information,

skills, preparing, coping and deciding on career/life choices. To use SIGI, you must make an appointment. Call extension 6193.

**JOB NEWS:** World Language Institute is increasing its foreign staff of English teacher in JAPAN from 10 teachers to 15 teachers by March 31, 1989. They need to hire 7 teachers by January. After that they will be hiring at least one teacher a month to replace teachers whose contracts are expiring and additional teachers to fill positions created by the growth of their programs. If you want more information, come see us in L. 1401. By the way, we have a whole section in our Resource Library on Work, Study and Travel Abroad.

We received a News Release from the Environmental Talent Bank that wanted us to get the word out that they are "seeking the Nation's best and brightest for Government jobs." They are recruiting individuals who are

committed to influencing the development and implementation of environmental policies under the next Administration. According to Tina C. Hobson, co-chair of the Talent Bank and Executive Director of the Washington-based Renew America, "The summer's stifling heat, dirty air, and the drought in the nation's breadbasket have heightened concern about the environment and created a groundswell of support for national policies that protect our world - the air we breathe, the food we eat, and our lakes and rivers."

On the local job scene - we continue to receive all state job listings weekly along with many other available positions around the state. Our jobs are updated every day. If you are interested in jobs now or in the future, become acquainted with our location.

Trivia from our latest Placement Report - Did you know that Counseling and Social

Services continue to be the major career interest area for our students at TESC with Business Management running a close second? Environmental Sciences surprisingly followed behind Education, Literature, Humanities & Writing and Public Administration. Next week, I'll explain how we obtain the information and statistics for our Placement Report each year.

**BY POPULAR DEMAND:** Career Development has scheduled another GRE Practice Test, to be conducted Friday, November 11 at 8:00 a.m. in Lecture Hall # 2. For those of you who are planning to take your GRE on December 10th, a reminder that you must be registered by October 31st. We have registration packets in our office. Please sign up for the practice test in our office or by calling x 6193. There is no fee for the practice test. See you next week!

# Davis says South African issues are global

by Jon Cawthorne

On September 30, 1988 Angela Davis, was brought to speak by the Association of African students at Portland State University. Davis spoke on "the quest for a free South Africa." In her opening remarks she

declared that the struggle in South Africa had become a global issue. "The decades old struggle in South Africa is about to reach its culmination, and all around the world people have expressed their solidarity with the awesome freedom fighters in South Africa with a resounding global cry for freedom."

Ms. Davis talked about a campaign to free jailed African National Congress leader, Nelson Mandela. The objective of the campaign, "Free by 70", is to have Nelson Mandela before "his 71st birthday... (he) walk free in the land of South Africa."

as much and often far more than the adults." However, regardless of the barriers put before them children refuse to quit. "The South African people... are going to win with or

without our help," she continued. "There's no doubt about it."

Davis told the crowd that 162 U.S. companies had pulled out of South Africa but 115 international companies still retained ties. Bill 2756 sponsored by Ron Dellums, Alan Cranston and Edward Kennedy, which is currently being debated

"We must learn to read between the lines of newspaper articles, and we must be aware of the fact that the struggle goes on in South Africa even if we do not read it in our local newspapers."

Angela Davis

The freedom forces in South Africa are clashing against, what Davis calls, a racist, paranoid and hostile government. "When racism falls in South Africa it will experience a global defeat."

The children of South Africa are caught in the middle of the problems South Africa is having because they don't have power. "When racism is in power," Davis said, "the children suffer

in the U.S. Senate prevents all trade with South Africa.

"All the people of this country must accept a certain responsibility not only because of the role the US is playing today bolstering [the South African Government], but

because the system of Apartheid is very much tied to the historical experience of the United States of America."



## Support our Software AND Keep the Hardware

Keep the hardware? That's right, if you successfully complete your nine-month co-op term, you will have earned your IBM Compatible or Macintosh computer.

We've got Technical Associate internships available for people who speak our language — Basic, C, Pascal or Assembly. As a Technical Associate Co-op you'll provide technical support to users of Microsoft software, as well as test Microsoft products. Excellent command of the English language and great problem solving skills are a must. Experience as a computer tutor or programmer is a definite plus.

We're looking for students who want to prove something to themselves — that they've got the enthusiasm and motivation needed to make it in a corporate setting.

Our paid internships are full-time (40 hours a week) and last for a duration of 9 months. Relocation assistance is available for non-local participants. Additional benefits include a competitive salary, membership in our local health club and software discounts.

There are only a limited number of internships available, so act now. Contact your Co-op Education Office by October 17 for more information about our internships, eligibility and our upcoming campus visit. Microsoft is an equal opportunity employer.

**Microsoft Co-op**  
We Give New Meaning to Support

**TOURING TUBS & COMPANY**  
**RELAX! ENJOY!**  
BEST RATES IN TOWN

- MOBILE RENTAL HOT TUBS
- LICENSED and SANITIZED
- GROUP DISCOUNTS AVAILABLE (WE DEAL)
- THINK OF THE POSSIBILITIES!

4131 Block Lake Blvd. SW, Olympia, WA 786-0120

**A-1 SEWING CENTER**  
SINCE 1968  
AUTHORIZED DEALER FOR

- VIKING
- White
- Singer

• SERVICE & PARTS FOR BERNINA • BROTHERS • ELNA • KENMORE • NECCHI • NELCO • NEW HOME • PFAFF • SINGER • VIKING • WHITE • MORSE • RICCAR • AND MANY OTHERS

- Sewing Video's
- Classes
- Honest, Everyday Prices

109 N. CAPITOL WAY  
(Downtown Between 4th & State)

**943-8130**

OPEN TIL 6 WEEKNIGHTS

**You're Invited!**

TO COME BY THE C.P.J. OFFICES CAB 306A ANYTIME FOR A VISIT OR TO SEE HOW YOU CAN BE A PART OF THE EXCITING WORLD OF MEDIA PUBLICATIONS!

**OPEN PLANNING MEETINGS EVERY MONDAY at 6:30 PM**

SEE YOU SOON!

TAKE A GIANT STEP WITH EVERGREEN EXPRESSIONS AND THE

**ANZANGA MARIMBA ENSEMBLE**

**SAT, OCT 15 8PM**

TESC EXPERIMENTAL THEATRE

Childcare Wheelchair accessible Reservations/Information 866-6833

**\$5.50 STUDENTS & SENIORS**  
**\$7.50 GENERAL ADMISSION**



# Calendar

**THURSDAY, OCTOBER 13**  
 Maria Theresa Tula from the Committee of Mothers and Relatives of Political Prisoners, Disappeared and Assassinated of El Salvador, will be speaking in the TESC Library Lobby at 7 p.m.. For more information call X6144.

The U.S. premiere of the dance work SOUS LES VETEMENTS BLANC will be performed at On the Boards in Seattle now through Sunday the 16th daily at 8 p.m.. For more information call On the Boards at 325-7901.

A free public forum entitled Chemical Dependency and the Family-The Way Out will provide resources and techniques to improve the quality of life for family members and the addicted family member. For more information call St. Peter Hospital, X7247.

Two free movies will be shown today in LH3 as part of

World Rainforest Week. Rain Forest at 7 p.m. followed by Decade of Destruction and a discussion. For more information contact Chris Ivey at 357-9832 or David Phillips at 352-4451.

**SATURDAY, OCTOBER 15**  
 The relationship between Indian Nations and the U.S. government will be debated at TESC Library Lobby from 9 a.m. to 4:30 p.m.. This debate will examine issues related to the Self-Governance Demonstration Project which was enacted by Congress in 1987. For more information contact Information Services at 866-6000.

Tales of the Pacific Northwest by Tom Dunn is being presented at the Childrens Theater Northwest at 1 p.m. and 4 p.m.. Tickets for adults are \$6 and for children \$3. For more information call 754-1802.

Teams interested in joining

the upcoming Winter Basketball League must sign up at the Olympia Center. For more information contact Olympia Parks and Recreation, 753-8380.

Eddie Shaw and the Wolf Gang will be performing at 9:30 p.m. at the Elks Club (318 W. 5th, Olympia). Tickets are \$5 in advance, \$6 at the door. Tickets are available at positively 4th Street, Rainy Day Records, and Freeway Records and Tapes. For more information call 754-7362.

The Anzaga Marimba Ensemble performance at TESC Environmental Theatre will kick off the 1988-89 Evergreen Expressions Performing Arts Series at 8 p.m.. General admission is \$7.50, students, Alumni Assoc. members and senior citizens \$5.50. Tickets available at TESC Bookstore, Yenny's Music and The Bookmark. For more information call 866-6833.

A concert featuring Italian

music from the Renaissance kicks off the 8th season of the Masterworks Choral Ensemble. The concert will be at the Good Sheperd Lutheran Church (1601 North St.) beginning at 8 p.m.. Tickets are \$8, available at Yenny's Music, Pat's Bookery and The Bookmark. For more information call 357-7188 evenings.

**SUNDAY, OCTOBER 16**  
 The Olympia Storytelling Guild Story Swap will be at the YWCA (220 E. Union, Olympia) from 3 - 5 p.m.. All ages are welcome, \$1 donation. For more information contact Elana Freeland at 754-4699.

**MONDAY, OCTOBER 17**  
 There will be a protest against U.S. intervention in Central America. Meeting place is Percival Landing (4th and State St., Olympia) at 11 a.m.. For more information call EPIC, X6144.

**CLASSIFIEDS CAN HELP!**

CALL  
 866-6000 X6054

**POSITIVELY 4TH STREET**



LP's • 45's • TAPES  
 COLLECTIBLES

Blues • Punk • Rockabilly  
 Reggae • Classical • &

POSTERS • IMPORTS  
 FANZINES • T-SHIRTS  
 POSTCARDS • BUTTONS  
 COMICS

MON-SAT • 11am-6pm  
 Downtown Olympia  
 786-8273

Treat yourself to the finest!  
 • Private Hot Tub Rooms  
 • Therapeutic Massage

**GIFT CERTIFICATES**  
 from \$7.75

HOURS: 11 am-11 pm Sun-Thurs  
 11 am-1 am Fri-Sat



**TOWN TUBS and Massage**  
 943-2200  
 115 E Olympia Ave Olympia, WA 98501

## Notice



Pursuant to EAC 174-162-230

### STUDENT BOARD MEMBERS FOR

The 1988-89 Services and Activities Fee Review Board are currently being solicited.

**Applications**  
 S&A Administrative Office  
 CAB 305  
 The Evergreen State College  
 206-866-6000 x6220

**Closing Date**  
 All applications must be filed with the S&A Administrative Office; CAB 305 by 2 p.m. Wednesday, October 19, 1988

Interested Evergreen Students are encouraged to apply regardless of their sexual orientation, race, sex, age, handicap, religious or political belief or national origin.

### WHAT IS THE S&A BOARD?

The Services and Activities Fee Review Board is responsible for allocating Student Activity Fees to various groups and programs throughout the college. This is an especially responsible task at TESC since, unlike most Washington State schools, S&A fees are not used for debt service of building projects. All of the S&A fees at TESC are for S&A programs...and that means people.

The board gets its authority from the Evergreen Administrative Codes (EAC), which are part of the Washington Administrative Codes (WAC). The EAC's state that the board should be composed of six student volunteers with a one year tenure, one staff person, and one faculty member.

The S&A board is, in essence, an advisory board. Its allocation decisions are reviewed by and negotiated with TESC Administration. Board members should become well acquainted with the mission, goals, objectives, policies, and history of the Evergreen State College. For this reason, board members should become familiar with the college's Strategic Plan, the Covenant on Governance, and the Social Contract.

Being a board member takes a significant commitment of time and energy. Board members attend weekly meetings that may last anywhere from one to twelve hours. An S&A board member gets hands-on experience in budgeting, management, policy making, and administration. It is a philosophical and political task that affects people's lives and the present and future of the Evergreen State College.

### THE SELECTION PROCESS

The selection committee will hold interviews of all applicants in public meetings which will be held during S&A Board meetings starting Friday, October 21st.

**SELECTION BEGINS**  
**FRIDAY, OCTOBER 21, 1988**  
 CAB 108  
 12:30-2:30 p.m.

Community testimony regarding the applicants shall be solicited by the Selection Committee at the end of each interview session.

## Notice

# Calendar

Those interested in peace and justice are invited to attend a public meeting of the Olympia Central Action Committee at the First Christian Church (7th and Franklin, Olympia) at 7 p.m..

Microsoft Internship applications for winter quarter are due today. For more information contact the Office of Cooperative Education, 1 1407.

**TUESDAY, OCTOBER 18**  
 There will be an open meeting for the Evergreen Chapter of Amnesty International from 7 - 9 p.m. in CAB 110. For more information contact Whitney at 866-6567.

"Everything you wanted to know about Graduate School" from 11:30 - 1:30 in L 3500. For more information contact Career Development at X6193.

The Asian / Pacific Islander Coalition is having a potluck to which all who are interested are invited at the Edge (A Dorm) at 7 p.m. For more information call Sothy, Wil or Jean at X6033.

**WEDNESDAY, OCTOBER 19**  
 "Learning from Lectures" presented by KEY Student Services will be in L1612 at 3-4:30 p.m.. For more information call X6464.

An ex-smokers support group will meet each Wednesday at the St. Peter Hospital cafeteria at 7 p.m.. For more information call John Markham at 459-1891.

**THURSDAY, OCTOBER 20**  
 Gandhi, the movie, will be presented at 7:30 p.m. in LH3 as part of A Global Walk Film and Lecture Series. For more information contact EPIC at X6144.

Orientation to Career

Planning from 12:30 - 1:30 in L1406. For more information contact Career Development, X6193.

St. Peter Hospital offers a one-session breastfeeding class for expectant and new mothers from 7 - 9:30 p.m.. Cost is \$10 per family. For more information call the St. Peter Hospital Parent Education Department at 456-7016.

Debate on Initiative 97 and 97B will be held at Kitsap Central Regional Library Meeting Room (1301 Sylvan Way, Bremerton) at 7 p.m..

The Black Hills Audubon Society will be having its monthly membership meeting at the Capital Museum Coachhouse (211 W. 21st, Olympia) beginning at 7:30 p.m.. The public is welcome. For more information call 352-7299.

### ONGOING

The Oregon Shakespeare Festival is now in its fall season, and evening performances in the Elizabethan, Black Swan and Angus Bowner Theaters will begin at 8:00 pm. Late arrivers will not be let in until there is a suitable break. Tickets for the indoor season (until October 30) are still available. For more information or ticket reservations call (503) 482-4331.

The Allegro Dance Festival begins its '88-'89 season. All performances will be at the Broadway Performance Hall, and will begin at 8 p.m. For more information call 32-DANCE. Subscription Plans are available for savings.

The Northwest Folklife Festival has now made available

the Folklife Catalog through which the work of Traditional American artisans can be purchased year round. For a free copy call or write to the festival office: Northwest Folklife Festival, 305 Harrison St., Seattle, WA 98109. (206) 684-7300.

Olympic Parks and Recreation Department is offering youth programs and workshops this fall, in which openings are still available. Call 754-8380 for more information and registration.

Olympic Parks and Recreation Department Adult Men's Basketball League is holding registration until October 14. The league begins the first week of November. For more information call 753-8380.

The Olympia Timberline Library will hold a preschool storytime for children ages 3-6. These half-hour programs feature picture books, stories, fingerplays, and activities. Preschool storytimes will be held from 10:30 to 11 a.m., Thursdays, October 20 through November 17; and Monday afternoons, 1:15 to 1:45 p.m., October 24 through November 28 at the Olympia library. Parents are welcome but are not required to attend with their children. For more information, call the library at 352-0595.

Pajama Storytime, an evening's entertainment for children ages 4-7 at the Olympia Timberline Library, 7 - 7:30 p.m., Wednesdays until October 27. For more information, call the Olympic library, 352-0595.

It's Trivial Pursuit time at the Olympic Timberland Library. Young people ages 12 to 18 are invited to participate in the game by teaming up with friends or allowing the library to assign teams. This Saturday excitement will begin at 2:30 p.m., October 15 at the Olympia library. Pre-register starting October 1 at the library's youth services desk or by calling the library, 352-0595, ext. 17.

The Readers Program here at Evergreen needs to borrow books from our community this quarter. This is a volunteer program which provides Challenged Students with cassette tapes of text books. For more information on which books are needed contact Sharon McBride in L-3101-A, X 6348.

Now is the time to start planning for winter quarter internships. For more information contact the Office of Cooperative Education, at L-1407 during drop-in hours which are Tuesdays, Wednesdays and Thursdays 3 to 4 p.m..

Nominate a valued wetland for preservation by filling out the questionnaires offered by the Department of Ecology, which is trying to identify the "most important" wetland in the Puget Sound Basin for preservation. For more information of the questionnaire contact Jane Frost at 438-7429 or Teri Granger at 438-7427.

For those interested in art the Tacoma Art Museum may be of interest. Hours are Monday through Saturday 10 a.m. to 5 p.m., Sunday noon to 5 p.m.. General admission is \$2, seniors and students \$1, people under twelve get in free. On Tuesdays everyone gets in free. Located on 12th and Pacific Avenue in downtown Tacoma.

Media Services has a number of interesting workstudy jobs available for students with varying amounts of experience in the area of Media Production. For more information contact Media Services, L-1302, X6258.

Entries are now being accepted for Playboy's 1989 College Fiction Contest and will be accepted until January 1, 1989. For more information call Bill Paige (312) 751-8000, X2259.

The seventh annual International Student Scholarship Competition is now underway and will continue until December 1, 1988. This is a nation wide essay competitions for international students studying in the United States. For more information, rules and entry forms write: Essay Competition Coordinator; DSD Communications, Ltd.; 10805 Parkridge Boulevard, Suite 240; Reston, VA 22091.

The Office of the Administrator for the Courts is

sponsoring the Washington Law/Media Fellowship for career-oriented journalism students interested in learning more about the Third Branch of government. Students need a faculty recommendation. For more information call Robert Henderson, at 753-3365 X256.

The National College Poetry Contest sponsored by the American Collegiate Poets Anthology will be accepting manuscripts until October 31, 1988. For more information call Arnaldo Rodriguez, Dean of Enrollment Services, X6310.

American Poetry Association is sponsoring a poetry contest for which poems will be accepted until December 31, 1988. For more information call Arnaldo Rodriguez, x6310.

Cable News Networks Washington, DC Bureau is offering News Internships the 1989 Spring Quarter. The internships are interdisciplinary and are not restricted to broadcast or journalism majors. For more information write or call Jerry Levin; Manager of Administrative Services; Cable News Network; 111 Massachusetts Ave. N.W.; Washington, D.C. 20001; (202) 898-7945.

Lesbian Rap Group will be meeting every Tuesday From 7 to 9 p.m. in L-2614.

Gay Mens Rap Group will be meeting every Wednesday from 7 to 9 p.m. in L-3223.

The Gay / Lesbian Community meeting will meet the second Thursday of each month from 7 to 9 p.m. beginning in November, location T.B.A.

Eighteen year old male students are required by law to register with the Selective Service within 30 days of their 18th birthday. Male students must prove they have registered to be eligible for federal financial aid. For more information write to The Registration Information Office, P.O. Box 4638, North Suburban, Illinois 60197-4638, or call toll free 1-800-621-5388.

The Fund for Education and Training was recently formed to provide financial aid for draft non-registrants. For more information write to FEAT, Suite 600, 800 18th Street NW, Washington, DC 20006-3511, or call (202) 293-5962.

Marianne Partlow Gallery is presenting an exhibit of carved sculpture by Duane Pasco now through November 9. Gallery hours are Tuesdays through Fridays, 10:30 a.m. - 5 p.m. and Saturday 11 - 4 p.m.. For more information call 943-0055.

The Olympia City Council is seeking applicants to serve on the Board of Code Appeals. Also the Olympia City Council's Government Committee is seeking applicants to fill a vacancy on the Heritage Commission. The deadline for applications is October 28, 1988. For more information contact Nancy Dombrowski at 753-8447.