



the Cooper Point Journal

Issue No. 9 | Feb. 13 - Feb. 26, 2014

Evergreen State College Student Newspaper

DEAD PREZ RIOT - SIX YEARS LATER

p. 9



BUSINESS

Business Manager
Cassandra Johnson-Villalobos
Associate Business Manager
Amanda Frank
Marketing & Design Manager
Issac Scott

NEWS

Editor-in-Chief
Ray Still
Managing Editor
Patrick Stewart
Arts & Entertainment Editor
Josh Wolf
Multimedia Editor
Serena Imani Korn
Letters & Opinion Editor
Aaron Sweet
Columnist
Sara Fabian
Sports & Rec Editor
James Gutsch
Comics Editor
Joel Skavdahl
Illustrator
Ruby Thompson
Photo Editor
Jamie Nadel
Web Designer
Daniel Cochran
Copy Editors
Alexandra Hillyer
Jack Wyss
Photographer
Blaine Ewig
Reporter
Jaelyn Hashimoto

CONTACT

Office
The Evergreen State College
CAB 332
2700 Evergreen Pkwy NW
Olympia, WA
News
(360) 867-6213
cooperpointjournal@gmail.com
Business
(360) 867-6054
cpjbiz@evergreen.edu

Cover Art



Cover photo by Rozell Townsend.

© 2014 Cooper Point Journal

Up/Coming

Olympia & The Evergreen State College

THURSDAY 2/13

LE VOYEUR - Marty Berrett, Fobue Mobis, Dead White, Chrome Windows, Asia, Ian Bickelhoff
TESC SEM2 D1105 - Healthy Relationships and Boundary Setting | 4 p.m.

FRIDAY 2/14

EXPERIMENTAL THEATER - Command + Z
LE VOYEUR - The Paralytics
TRACK HOUSE - Stalebirth, Sad Sad Bicycle
CAPITOL THEATER - TUSH Burlesque

SATURDAY 2/15

EXPERIMENTAL THEATER - Command + Z
LE VOYEUR - Captain Algebra (ALL AGES)
LE VOYEUR - Oh Rose, Frances Rose, The Old Salt, Terapin

SUNDAY 2/16

LE VOYEUR - The Main Arcade

MONDAY 2/17

LE VOYEUR - Tiger Lilly, Stanley and the Search (ALL AGES)

WEDNESDAY 2/19

TRADITIONS - Risa Denenberg

THURSDAY 2/20

LE VOYEUR - Big O, Model Citizens, Drumatic of Cauze n Efekt, Cam the Viking

SATURDAY 2/22

METCALF MANOR - Trash Heap, The Yev, The West, The Celestials
LE VOYEUR - Captain Algebra (ALL AGES)

SUNDAY 2/23

LE VOYEUR - The Ardana, Hot Hoodoo, The Cravities (All AGES)
LE VOYEUR - Miss Massie Snoflake, Rainstick Cowbell

MONDAY 2/24

LE VOYEUR - Anarchists Against the Wall (ALL AGES)

TUESDAY 2/25

LECTURE HALL 1 - Resistance to Israeli Apartheid

WEDNESDAY 2/26

FLAMING EGGPLANT - Letter Writing to Palestinian Prisoners

Letter from the Editor:

CORRECTIONS AND SUBMISSIONS

In our last issue, there were several errors that need to be corrected. In "New Monthly Open Mic at HCC," Shannon MacIntyre was misquoted in the pull quote. The quote was actually written by the author of the article. Additionally, we were informed that Hip Hop Congress was not involved in the B-Dorm performances last year. Chris Glattard, Noah Gokul, Zak Soeria-Atmadja, and Rachel St. Denis helped organize those performances, and no clubs were involved.

In "General Assembly Facilitates Dialogue on Student Power," it was implied that enrollment was down 300 students, which led to the school losing \$10 million dollars in funding, which led to student participation decreasing on campus. These facts are not connected – there is correlation, but no causation.

Finally, the date for the Shellfish Work Party was incorrect in the calendar. Shellfish Club partied it out on the beach on the night of the 1st, and not the 9th.

If you see any factual errors or issues of clarity our articles, or just wish to ask us for more information on an issue, please email us at cooperpointjournal@gmail.com. It helps us if you write an appropriate subject line – something like, "Correction for *headline here*". We get a lot of spam emails, and would like to be able to hone in on your comments and concerns.

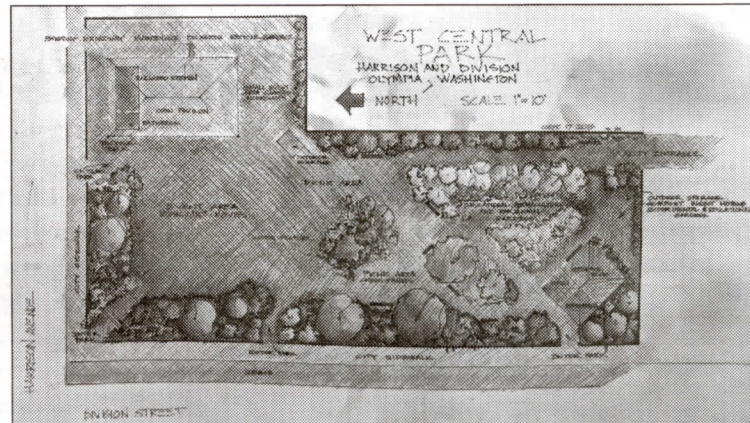
On a different note, we are continuing to look for Evergreen students who are interested in submitting artwork for the newspaper cover or an article/letter to the editor. If you are interested in submitting your work, or even if you need to brainstorm for a few ideas, give us an email or come sit in on our public meeting (Mondays and Thursdays at 5). I thank the students that have already allowed us the opportunity to share their works and voices with the campus community.

Cheers,

Ray Still
Editor-in-Chief



West Central Park is now in Phase One of development. BLAINE EWIG



Plans for the finalized West Central Park. www.AParkForUs.org

From 'Urban Blight' to Public Sancturary

The West Central Park Project Works to Reinvent Neglected Lot with Help from Volunteers

BY ISSAC SCOTT

THE VACANT lot at the corner of Harrison Avenue and Division Street is getting a makeover, thanks to a group of committed local residents. The West Central Park Project is working to renovate the long-neglected site into a new park that aims to serve as a hub for the Westside neighborhood.

Final plans for the West Central Park are ambitiously comprehensive. In the project's vision for the park, visitors will grab lunch from food carts and enjoy lush vegetation, pathways, and benches designed by local artists. The park will host live music, and offer education on permaculture techniques with plaques showing how to garden sustainably at home. The group also intends to provide the only 24-hour public restrooms in the city.

Eventually, the project hopes to purchase the neighboring Di-Garmo's Pharmacy and convert the building into a cafe to provide income for the park.

Following a long history of controversial attempts to develop the site commercially, community

activist Alicia Elliott purchased the corner lot in 2012 and formed the West Central Park Project to help invigorate the neighborhood she calls home. The non-profit group now owns the property and hosts volunteer work parties every Sunday from 10 a.m. to 1 p.m. to develop the park. They invite everyone to come to the park and get involved.

Elliott said the grim condition of the centrally located site motivated her to take action.

"It seemed like a huge waste to me, bordering on urban blight in a neighborhood I perceived could be really beautiful, with small businesses, like downtown," Elliott said. "I wanted a park. I didn't want another place to demand money. An oasis, something

away from the money-sucking greed train that goes through here."

The project is part of a larger vision on the part of community members to enhance the Westside neighborhood with more local businesses and engaging public spaces. The City of Olympia has

similar plans for the neighborhood, with new policies to encourage high-quality urban development along Harrison Avenue.

The West Central Park Project seeks to reverse the history of the site, fraught with controversy and mismanagement. Roland Lumber Company first built on the lot in the 1920s, but left the building empty in 1980. The dilapidated building caught fire in 1997 and was demolished with help from

community members took the initiative to invest private resources in creating a vibrant public sanctuary.

"I don't invest in Wall Street at all," Elliott said. "The only money I invest is directly, as much as I can, here in Olympia, where I live and where I raise my kids. We have an alternative economy here; we just need to nurture it. We have artisans and farmers of every kind here. We can survive

"I wanted a park. I didn't want another place to demand money. An oasis, something away from the money-sucking greed train that goes through here."

- Alicia Elliott

the city. A local resident bought the property and tried unsuccessfully to resell the site to commercial developers for more than 15 years, despite vocal community opposition to the development.

In 2012, citizens campaigned against the commercial development, and pressured city officials to reverse their decision to allow the development to go forward. That's when Elliott bought the property and formed the West Central Park Project.

Because the City of Olympia doesn't have resources for city parks, Elliott and like-minded

with what we create here. We don't even need to leave the town to get our needs met."

Right now, the group is raising \$152,500 to complete the project. They're planning more fundraising events with food and live music at the park starting in the spring, building on their Bite of West Olympia event last summer.

"This park will be a treasure in 50 years if we do it right," Elliott said.

For more information on the project and how to get involved, visit www.aparkforus.org

DOWNTOWN OLYMPIA **108 FRANKLIN ST**

OLDSCHOOL

PIZZERIA

PIZZA BY THE SLICE OR WHOLE PIZZA PIES **PH 360.786.9640**

Last Word Books Looking for 'Fresh Legs'

BY RAY STILL

“WE HAVE to be out of this space by the end of February,” said Rob Ross and Sky Cosby, co-owners of Last Word Books and Press. “What we are going to do in the near future is going to radically eclipse what we’ve done in the last eleven and a half years. But we need the communities help to do this.”

This is the third time Last Word has moved locations since it was founded in 2002. The bookstore started on Fourth Avenue, where Oly World News was located, and then occupied a space on Fifth Avenue for a year and a half before settling in to its current location, back on Fourth Avenue, across from King Solomon’s Reef. Ross and Cosby are looking at several new venues, but are especially looking into the Olympia Press Building on Capitol Way, once home to Capitol City Press and the Olympian.

Ross and Cosby invited members of the Olympia community to meet with them on Feb. 5 to discuss different ways to raise the money. They need to pay what they owe their current landowners and the cost of moving not only the retail store, but their warehouse of online inventory.

“The financial issues aren’t the problem—it’s the physicality of moving everything so it isn’t pell-mell or a fucking mess,” said Ross. “We were worried that by the termination of the lease before it was done, that we would be responsible for the remainder of it. But the landown-

ers have been pretty helpful and forgiving in that way. We have the last month’s worth of rent to cover and then we are done.”

It is going to cost the bookstore \$4,000 to pay what they owe to the current landowners.

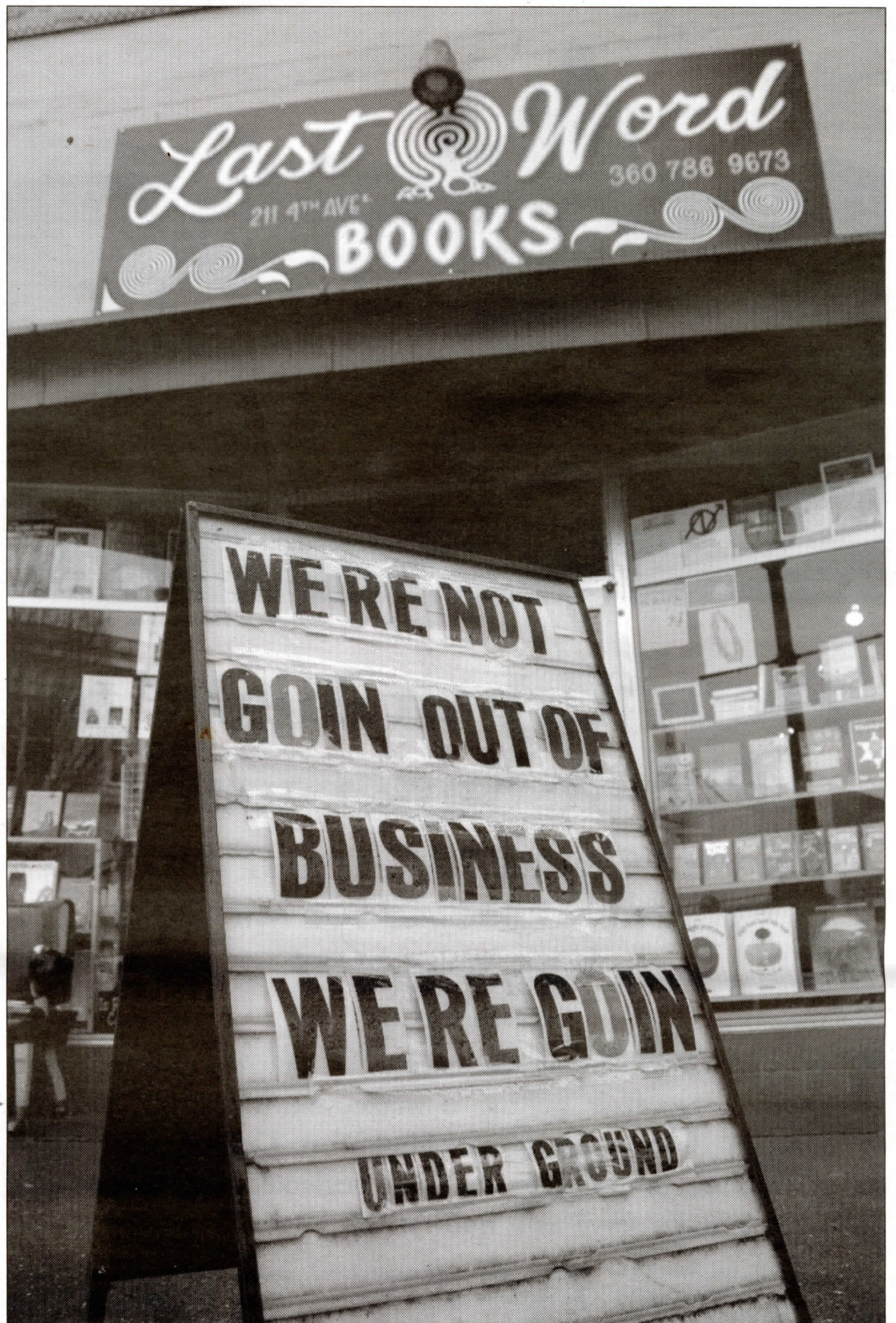
People who went to the fundraising planning meeting offered their services, from distributing handbills and flyers advertising various Last Word fundraising events, to donating forklifts and flat-bed trucks to lift and move the printing presses. Others offered to auction original artwork and band performances, with proceeds going toward Last Word.

Several people suggested having a sale of inventory that Ross and Cosby were not

“The financial issues aren’t the problem—it’s the physicality of moving everything so it isn’t pell-mell or a fucking mess.”

- Rob Ross

interested in moving to their new location. There was only one problem, Ross said—



Last Word Books and Press is planning to move to a new location. RAY STILL

“People don’t buy books.”

Over the past year, Ross and Cosby have noticed more of their business happening online, or through the printing press they run, instead of coming through the retail store. It hit them last Christmas, when they typically have a rush of store traffic.

“It just never materialized,” said Ross. “It was really slow that year in general.” After some cost/benefit analysis of their situation, the co-owners realized that it did not make financial sense to continue to operate out of their current location.

Ross and Cosby plan to still operate a small retail store in their new shop, but they

admit that “it will have to take second fiddle” for a while as they focus on their online store and printing business. Ross mentioned that, with less energy being used to maintain the physical store, they can spend more time on events, either in their new location or with other spaces downtown.

Ross and Cosby plan to work on the move from Valentine’s Day through President’s Day, and have expressed their hope that community volunteers will show up and ask to help. “This is an open invitation for anyone who wants to come in and help us,” said Ross. “And it would be very difficult for them to walk out without a book in their hand.”

Letters & Opinion



RUBY THOMPSON

Glass Blowing: Not Just for Bongs

Student Submission

BY SOPHIE KRAUZA

Are you a student, staff, or faculty member interested in learning more about glass art? Well, you're not alone. Anyone in the community interested in learning more about glass art should join in and help me persuade faculty, admissions, and the deans that a glass art program would benefit Evergreen students beyond the stereotypical notion that greeners would only take the program to create pipes and bongs.

My very first introduction to glass art was actually at Evergreen. A couple years ago I had the privilege of getting into a two credit evening and weekend program, Neon: Shaping Light. This lampworking introduction changed the way I look at art, light, and glass. To learn through the grapevine that the program is no longer running really upset me. The class was always super competitive to get into, but it was a true diamond in the rough for our visual art curriculum. We need to first bring back our preexisting glass programs, and then continue to build on them.

Last spring, I had the opportunity to intern at Pilchuck Glass School, located up north in Stanwood, WA. What little time I spent at the school introduced me to the captivating physical and visual properties glass possesses. Glass art

is relatively new to me. I got to gather glass for the first time in Pilchuck's hot shop on a staff blow day. During my internship as a maintenance assistant I was introduced to glass blowing, sand casting, and was exposed to a minute lampworking demo. Being part of Pilchuck's creative community was very stimulating – it exposed me to a wide range of artist demonstrations, lectures, and many networking opportunities.

This year, I was nominated for the Pilchuck partner scholarship through The Evergreen State College - as it turns out, Pilchuck and Evergreen are partner institutions. Every year, institutions that partner with Pilchuck are invited to select a member or student to receive a partial scholarship to Pilchuck. I would have never known about that opportunity if I didn't approach a

faculty member about attending Pilchuck for the internship last year.

I have been recently informed that the Evergreen Longhouse has future plans to build a glass-casting program as a part of the Master of Fine Arts curriculum in Indigenous Studies. Even though my undergraduate studies are ending soon (I am a senior this year), I hope I can continue to be around Olympia and the Evergreen community beyond graduation, since I have a strong interest in seeing this program grow. I have submitted a volunteer form to the Longhouse staff offering my manual labor, volunteer hours, and services to this glass program. I know it would be a real treat to give some assistance while learning more about our campus' Longhouse.

The involvement I've had with Pilchuck's programs and Evergreen's neon studio have inspired me to get a conversation started about a glass program here at Evergreen. I know Greeners are

Until we can secure a space for studios and equipment, why can't we encourage students to take independent learning contracts to help build the initial experimental furnaces, annealers, and glory holes?

interested in learning more about glass art, and I really think our visual art department could use the program.

I think every Greener deserves to know about this opportunity. I would love to see more Evergreen students attending Pilchuck over the next few years. Pilchuck's summer sessions are predominantly filled with BFA and MFA students and alumnus who have earned their degrees in glass art. It would be fascinating to see what Evergreen's population could bring to the creative community at Pilchuck.

I think we should team up with the

Campus Land Use Committee at Evergreen and figure out a way to make space for a glass art studio and a public glass facility. I know this vision will take a lot of time, energy, and, of course, funding, but we have to start somewhere. I believe the Geoduck Student Union and other student organizations are the perfect settings to expand on this idea to our fellow peers.

I think motivated Evergreen students should manifest their own Student Originated Studies in glass art or three dimensional studies. Until we can secure a space for studios and equipment, why can't we encourage students to take independent learning contracts to help build the initial experimental furnaces, annealers, and glory holes?

The Museum of Glass and other glass educational institutions have fully equipped mobile glass hot shops that are designed to travel right to your doorstep for entertainment and educational purposes. Perhaps something of this scale, with basic equipment and minimal setup, could get more Evergreeners involved with glass. The students that I have started to reach out to have a strong desire to investigate various glass forming methodologies and material prosperities. I recently posted a handful of flyers reaching out to the Evergreeners interested in glass. So far I have received a few responses and inquiries interested in helping me spread the word about getting hot glass on campus.

If you, or someone you know is interested in bringing back neon bending or learning more about glass blowing, lampworking, stain glass, slumping, or cold working, let's do something about it.

If these classes resonate with you or sound remotely interesting, please, let's get in touch. This effort is going to take an immense amount of involvement from the community. If we continue to leave this medium untapped, we may be robbing a generation of Evergreen students from realizing their potential in fine arts studies.

You can contact Sophie Krauza for more information at krasop16@evergreen.edu.

Jewelry • Natural Body Care • Bulk Herbs • Books • Cards • Candles



Mon-Fri 11-7 :: Sat 10-6 :: Sun 11-5
www.radianceherbs.com :: 113 E. 5th, Olympia :: (360) 357-5250

Slices of Life in Occupied Palestine

Interview with a Palestinian Student

Student Submission

BY KRISTINA ERICKSON



Photo courtesy of Rifqa Shawer

How many times have we heard the same first-world voice in every 'free Palestine' article? These articles, which set an academically pretentious tone, are a great way to deliver your best Lakshmi Singh impersonation, but they also repel the complacent masses from acknowledging the myriad of crimes their tax dollars fund as they continue the comfortable assumption that this problem is just too complex, ancient, religious, or far away for me to worry about.

As a Palestinian-American, I have noticed that most people, no matter their geographical identity, remove themselves from any culpability related to the illegal occupation in Palestine—naturally, we want to stay in our comfort zones. This is why a hats-off-applause is deserved to the activists who dedicate uncommon amounts of time working towards peace—especially the growing momentum of the BDS movement—boycott, divestment, and sanctions against Israeli companies who profit from the caging of Palestinians.

So, as we sit with a world of problems flashing on our computer screens, where are the Palestinian voices?

While spending the spring of 2013 in the West Bank city of Al Khalil, I had the opportunity to teach English and volunteer for an NGO through Evergreen's America Abroad program. I befriended many talented college students. Everyone I met was a poet, writing different variations of the same message: 'the pen is stronger than any weapon.'

As an attempt to remove the political lens from a humanitarian crisis, I conducted interviews with students who just happened to be born on this ill-fated side of the wall.

In correlation with the 10th annual Israeli Apartheid Week, Feb. 24 through March 2—an international series of events spreading awareness on apartheid Israel, I want to feature the words of a young person whose world has been framed by oppression. Although she bears the weight of the daily struggle, thousands of miles away, she is a peer on the global scale.

Rifqa is a 19 year old Hebron University student pursuing a degree in pharmacy. She has three brothers, two sisters; admires the government structure of Sweden and hopes to visit someday, enjoys painting, writing, swimming; and if you ever get the chance to hear her play piano, you'll be impressed. We met at a language center where she studied English in addition to her school work.

This is what she had to say:

Kristina Erikson: What is your career path? Describe your ideal job.

Rifqa: For me a pharmacist. In my country, I will have two or even three choices: finish the coming four years at university, then go on to take the higher grades and work as a professor or as a pharmacist in a pharmacy, or just stay home, because it's not easy to have your own pharmacy. I always try not to think about that. I really want to travel and visit a lot of countries, maybe to see how is the real life with your freedom, and maybe to study, then come back. I will never leave my home Palestine.

KE: What are some of your memories of understanding life in occupied Palestine as a child?

R: I remember there was horrible days, AND STILL ARE! First, we used to go to the sea every week, but when I became

eight we couldn't because they cancel the roads and prevent us to go to Jerusalem or to Al Aqsa mosque, or to the sea. Since then I didn't go to the sea. Anyway, I still remember the days when I was a child and I saw the guns and tanks destroying the roads, and the voice of the planes over our heads, day and night. Something strange with me is that I used to watch the news since I was a very young child, and always asked my family about what I don't understand.

Maybe I should tell you about the day the Jewish soldiers came and kill our neighbor's dog, that was my first time hearing the voice of a gun so closely, and I had a very bad shock. Remember I was only nine. I think I couldn't sleep that night. And they weren't content with that. They colonize our neighbor's home, and another home in front of us, and they never got sick of hurting us, and pointed the long mouth of the tank to us when we were playing—I

mean me and my friends!

And I still remember a very bad and disgusting thing they did to us, they tried to pee in a bag and then throw the bag to our home. Every time I remember this I feel horrible. You can never imagine how I feel right now. For about two months; we were not allowed to go out of our home, even to take a look from a window. It's a short overview about things I remember when I was a little child, and it's nothing comparing with other peoples trials, especially the prisoners and people in the jail.

How it affects me psychologically to know I am a refugee. The daily life—how it affects the children trying to go to school, no clinics no ambulance. All these things affect our daily life

KE: Do you have any ideas on how to help the future of Palestine?

R: Right now I'm looking and trying to find solutions. We want to live in this country with equal rights, one democratic state. Many people are talking about one democratic state. A two state solution is impossible now because Israel, everyday they increase the settlements. They confiscate land. They put the wall, take all the access to boarders, and take all of Jerusalem, all of the natural resources. Is there logic for that? There is not. Remove settlements, remove the wall and Jerusalem—it must be open for everybody, and access to boarders. Mr. Kerry, now he is talking about exchanging land. They want the settlements to become legal after exchanging of lands

KE: What do you want to say to the American college students reading this article?

R: The thing that I want every person on the surface of this earth to know is that there are so many people who don't have rights. They don't have freedom. Here, if we want to travel there will be many difficult obstacles. The thing that I want to

explain is that everyone here in Palestine wants the world to know that we love everyone, we don't have any aversion against any one. We just want to live our lives like any other human on Earth. There are no words that can explain how we live here. It's like a big jail. We want to have life, not to live while we are dreaming of a true life.

The message I want to broadcast is that people of all ages and all over the world must feel connected. We must help each other and look after one another, we are here on earth to do this job, not to destroy and hurt and live our life as if we are the first and last on this earth. We live, and will all leave one day.

So why don't we hold our hopes for a better life together? Only together we can change.

I recommend finding honest press, to know what is truly happening all over the world. Al Jazeera is a very good web site you can see and know the world news on

Another point I want to add, is that most people only read titles and learn a little bit about lots of things, but they never know the details or facts.

They see little boys throw stones, but never see the soldiers kill people, or get them out of their houses in the middle of the night in very cold weather and tell them not to come back at all, and that it's not their home anymore!

They always call us terrorists and match that with the very peaceful religion, Islam. That always makes me sick, because they say this, but know nothing about religions. There is no religion on Earth that blesses killing, hurting or even cutting a tree. If a person lives in the Islamic world and did something wrong, he is the wrong one, not the religion! He is representing himself, not his religion. He is Muslim by name only. I feel very sorry when I see that lots of bad people do terrible things in the name of Islam, while Islam is the most peaceful religion ever. I think everyone should know about any religion before he gives judgment. We love Christians, we believe in Jesus, we don't have anything against Judaism, we don't hate paganism either! Islam told us to take care of everyone, even if he's not Muslim, even though if he is your neighbor your friend, or he is just a one who needs help. Islam told us to be honest, taught us to be kind and to feed the poor and hungry, to help the wayfarer and the orphan child, and to not be cruel and create miserly. He told us to love, keep the faith, and smile to the whole world.

So please, do not believe everything you here. There's always another face to the story.

Always search for the truth.

Check out <http://www.aljazeera.com/> and BDSmovement.net for more information on Palestine.

It's Time to Advocate for Your Own Education

Please Fill Out the National College Survey You Will Get

Student Submission

BY SHIRA MOCH

Greeners have a reputation as students who are interested and involved in the decision-making process here at Evergreen. But what if this isn't actually true? Only 20 percent of our first year students and 28 percent of our seniors at Evergreen are providing crucial feedback the college uses to shape our education.

How do I know this? The Office of Institutional Research and Assessment on campus publishes a report every two years on a national survey distributed by the Indiana University Center for Postsecondary Research, called The National Survey of Student Engagement (NSSE). This survey contacts first-year students and seniors during winter quarter at Evergreen and 500-plus other schools across the country. For some reason Greeners aren't as involved with the survey these days, which is really a detriment to ALL of our education. Why would this be? Is the dynamic at Evergreen moving away from activism and engagement? Is it just that students don't care anymore? Or, is it that students aren't recognizing the importance of this survey because it isn't administered by Evergreen, (or in other words, does it look like junk mail)? I ask all these questions because I honestly want to know why students have decided to stop advocating for themselves. If you received the NSSE survey and providing crucial input through email, will you respond?

This survey might surprise you. Let me list a few questions from the survey to spike your interest:

- "During the school year, about how often have you attended an art exhibit, play, dance, music, theater, or other performances?"
- "Which of the following have you done or do you plan to do before you graduate from your institution: Practicum, internship, field experience, co-op experience, or clinical assignment? Community service? Study abroad?"
- "What is the quality of your relationships with other students? With faculty members?"
- "How many hours per week do you spend relaxing and socializing?"

As you can see, the survey's focus isn't solely on your academics. Evergreen wants a well-rounded picture of what life looks like from a student's perspective. This survey is also very important on a national level, because the results from all the surveyed schools across the country are used as a peer comparison tool and to study national trends in effective educational practices.

To show you how much the NSSE results affect Evergreen, here are a few examples of direct influences it has:

- Assessment of students' learning and experience, which helps draw the administration's attention to areas that are strong and successful and areas that could use some help or revitalization.
- Administration's ability to understand students' learning environment and approach to teaching in a peer educator context, with other colleges.
- To compare students' experiences and Evergreen's curriculum to the college's goals and mission for purposes of assessment for regional accreditation.

Being a student of an alternative college where the curriculum doesn't really line up with most other schools, I personally often wonder how my education is comparing. To give you a taste of the results that Institutional Research and Assessment published, here are some findings (first-year and senior student findings are intermixed, please look at original report to see first-year and senior students findings separately):

Compared to other first-year and senior students, Evergreen students spend more time analyzing, synthesizing, evaluating, and applying learning; reading more assigned texts; write more short papers (less than 5 pages); and more frequently work harder than they thought they could to meet the instructor's expectations.

Compared to other first-year and senior

students, Evergreen students are more likely to ask questions and contribute to discussions in class and give class presentations; more often to work with other students on projects during class and outside of class; more often discuss ideas from reading and classes with others outside of class; more frequently participate in a community-based project as part of a course; and tutored or taught other students.

As I mentioned before, the response rate

Only 20 percent of our first year students and 28 percent of our seniors at Evergreen are providing crucial feedback the college uses to shape our education.

for the last NSSE was pretty low, meaning we are letting about a quarter of the students shape where Evergreen is headed for the next two years or so. I urge you to take back your power to enact change and take the survey when it arrives in your

Evergreen student email account. Don't instantly delete it when you see it is from Indiana University, and take a few short moments to share your Evergreen experience. I know that taking a survey doesn't seem as exciting as protesting in a picket line, and it makes it hard to see the direct effect you are having, but taking this survey gives students back their voice and enables them to influence change working with the system, not fighting against it. If we're not fighting for our voices what are we fighting for?

For more information, visit:

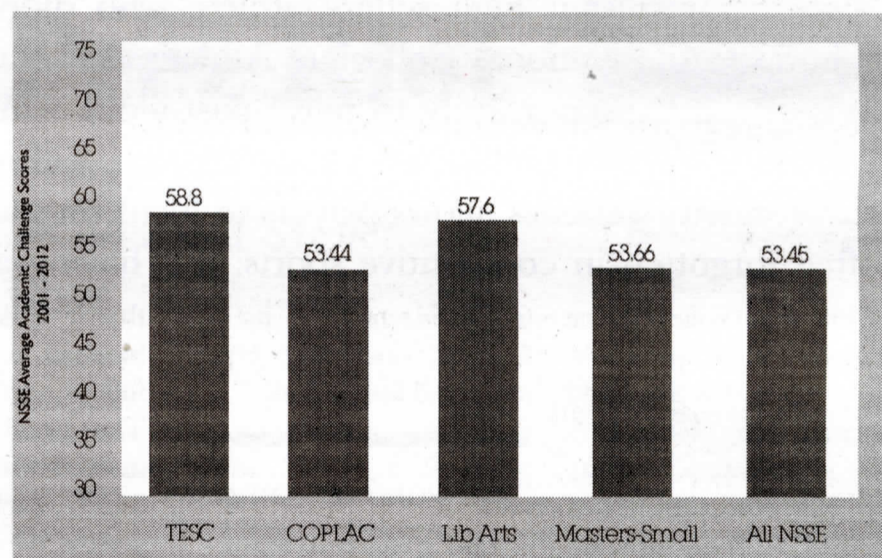
<http://www.evergreen.edu/institutionalresearch/nsse.htm>

COPLAC: the 14 participating Council of Public Liberal Arts Colleges

Masters-Small: the 35 participating institutions that are Master's Colleges - Smaller Carnegie Colleges

All NSSE: All 595 participating U.S. Institutions

FIRST YEARS



SENIORS

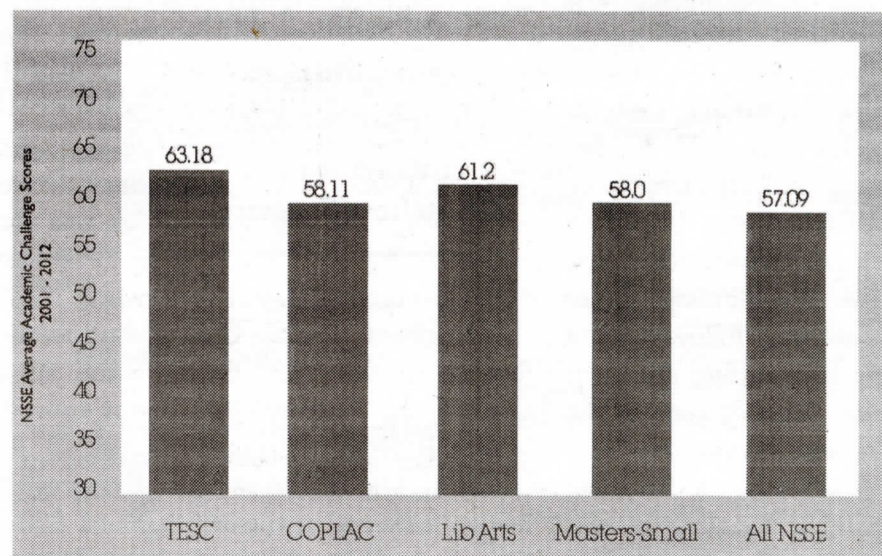




Photo courtesy of the Geoduck Baseball Team

Life is Just a Game, but Baseball . . . Baseball is Serious.

BY JAMES GUTSCH

For the burnt-out high school athlete who didn't make the jump to the National Collegiate Athletic Association, college club sports is an opportunity to relive past glory, while still clinging to those precious drops of youth. Playing without the pressures of varsity athletics allows players to focus on something that is often forgotten in competitive sports: just having a good time.

While some colleges have sustained athletic programs with proper funding and coaching, Evergreen club sports tend to pop up, play some ball, and then for a variety of reasons, disband. Baseball proved no exception. Five years ago this spring, the Geoducks suited up for their last ball game. Their season lasted roughly 12 weeks, stretching from St. Patrick's Day until the beginning of June. Evergreen would play one "series" a weekend, which consisted of two seven-inning games on Saturday, followed by a single nine-inning game on Sunday (or vice versa). The team would alternate between traveling and hosting ballgames. Because it was a club sport, the team had

to provide most of its own funding, including equipment and league fees.

"We won one game in our entire history. I think our all-time Evergreen baseball record is like 1-100 or something like that, but we had fun with it."

- Matthew Sweeney

Evergreen played for the Northern Pacific Conference in the West Division of the National Collegiate Baseball Association (NCBA). The NCBA is different from other associations governing athletics in

that it works only with club baseball teams that are not fully funded by a university. The Geoducks shared the division with some top institutions, such as Seattle University, Western Washington University, and the University of Oregon.

According to Evergreen senior Matthew Sweeney, who played as a utility player (a player who can play multiple positions) for the Geoducks from 2006 until 2009, fun was about all they had.

"It's kind of funny; the whole time I was on the team we didn't win a single game. We won one game in our entire history," Sweeney said. "I think our all-time Evergreen baseball record is like 1-100 or something like that, but we had fun with it."

Despite being completely student-run, the team remained organized and on-the-ball. Players consistently made it to practice, and Evergreen had a quality lineup that was not accurately conveyed through their record.

"Around 2007-2008 we had a lot of good talent, but also had an attitude of inclusion," Sweeney said. "There were some players that maybe weren't top notch in the skill department, but they were good teammates so they got to play; and we were all okay with that."

When asked about practice, Sweeney recollected with a laugh. "We used to practice in the indoor soccer pavilion. It was really cool because you could hear us

"What I'm interested in doing is getting together a group of guys who either want to play pickup games and have batting practice just for fun, or maybe get involved with a semi-competitive adult league."

- Matthew Sweeney

during batting practice all across campus. When the weather got nice we would set up in the soccer field. We

rarely had an actual baseball field to practice on. That might have had some influence on how we weren't always prepared come game time."

Evergreen played its home games at Olympia High School until they had to move. From then on, games were played at Black Hills High School in Tumwater, where the conditions were far from ideal.

"We had a few fans [come to watch]" Sweeney said. "I think the chemistry club would have bake sales during our games, so that was one of our fans."

Although it has been years since batting practice reverberated throughout campus, Sweeney said he thinks it can happen again. "What I'm interested in doing is getting together a group of guys who either want to play pickup games and have batting practice just for fun, or maybe get involved with a semi-competitive adult league," he said.

The old baseball uniforms are still stored in the attic of the CRC. Evergreen just needs fun-seeking, motivated, and marginally-talented students to fill them. Sweeney encouraged students with any interest in the game of baseball to contact evergreenbaseballclub@gmail.com for more information.



Garet Gardin & Gavin Dahl play ball with Seattle University in 2008. Photo courtesy of the Geoduck Baseball Team



The Dead Prez Riot

Part One in a Two-Part Series

REVISITING THE CONTROVERSIAL STORY

BY JOSH WOLF

Photo courtesy of Rozell Townsend

SIX YEARS ago this Valentine's Day, an estimated 200 students surrounded Evergreen Police Services Officer April Meyers. Meyers had just arrested black breakdancer Kaylen Williams, who was watching the crowd gather from the back of Meyers' patrol car. "Let him go!" the crowd chanted. As Meyers attempted to drive back to Police Services from Evergreen's College Recreation Center (CRC), the students blocked her car in solidarity with the handcuffed

suspect in the backseat. As Meyers called in for officer assistance, the Olympia Police Department, Thurston County Sheriff's Department, Tumwater Police Department, Lacey Police Department, and the Washington State Patrol mobilized to answer the priority assistance request. After seeing Meyers surrounded, the Olympia Police Department wasted no time and fought their way through the crowd using batons, metal flashlights, and pepper spray. Immediately, the students became en-

raged. According to Meyers, "a hailstorm of objects" descended upon the car and the assisting officers. The police retreated, and were forced to abandon a Sheriff's squad car. The crowd took control of the area and destroyed the car, smashing the windows and flipping it on its back. The result—\$51,685.50 worth of damage; a shocked and confused campus community; a suspect student body; the retribution of law and order; suspended campus concerts; allegations against hip hop: the dead

prez reaction.

The dead prez riot has become commonly associated with The Evergreen State College. Yet, despite the number of students and police officers at the event, eyewitness reports are numerous and conflicting. Did Officer Meyers racially profile Kaylen Williams? Was dead prez to blame for inciting the riot? Did the police use excessive force? How did faculty and administration react to the riot and police investigation into students? Over the past six years, these questions have become obscured through rumor and hearsay. This is our investigation to review the causes and effects of the dead prez riot, and to illuminate new information that had yet to be collected.

Hip Hop to Blame?

In 2007, Evergreen student Noah Theeman-Lindberg founded Evergreen's Chapter of The Hip Hop Congress. By the time of the dead prez show, the chapter had over 200 email constituents and about a

dozen people who regularly attended their meetings. The Hip Hop Congress has over 1,000 members in over 30 chapters nationally, and works to provide the hip hop community "with the tools, resources, and opportunities to make social, economic, and political change on a local, regional, and national level," according to the organization's mission statement. It's about "using hip hop as education," said Mariel Cutler, who graduated from Evergreen in 2011 and was the backstage manager at the dead prez concert. Evergreen's Hip Hop Congress was the main sponsor of the event, and coordinated everything involved in putting on the \$12,000 concert. The dead prez concert was their "jump off show," said Theeman-Lindberg. "This was how we wanted to let the community know that we are here, that we're serious, and come join us."

The show itself went smoothly and was planned with the help of Student Activities, according to Tom Mercado, director of Student Activities. The concert was

Continued on page 10

Features

'Dead Prez' continued from page 9

open to the public, and an estimated 800 people attended. In his review, former writer for "The Cooper Point Journal" Riley Fishburn described the concert as a "flawless performance...The show was dope as hell," wrote Fishburn. "I had high expectations going in, and they were exceeded."

Later in the review, Fishburn wrote: "To call dead prez a socially conscious hip-hop act is to understate the group's dedication to revolution, as well as their struggle against government oppression, racism, sexism, and the overarching apathy and ignorance of 21st century hip hop."

Although the concert was a great success filled with "unity within hip hop," said Theeman-Lindberg, The Hip Hop Congress felt that they were being attacked for their culture and politics in the aftermath of the riot and the overturned cop car. Many voices were blaming hip hop culture for the rioters' actions, and cited dead prez's radical politics as evidence. Hip hop magazine "XXL" reported that dead prez began playing their song, "Fuck The Police," as the suspect was being arrested, which made the crowd "more aggressive." Although dead prez did perform their staunchly anti-police tune, the "XXL" report (published the day after the concert) contributed to the perception that dead prez instigated a riot — a claim for which there is no concrete evidence. Still, it can be argued that dead prez did encourage the crowd to hold the police accountable.

"The Seattle Times" reported that as the crowd was singing along with the anti-police song, someone on stage with dead prez addressed the crowd, urging people to go further than simply condemning police: "Hold up, hold up, it's not just 'fuck the police.' That's great. But now you've got to organize behind this here. Make sure you find out that man's name and after we organize and have some justice, right?" This was the extent of dead prez's involvement in the riot.

Amidst the sensationalist reporting and confusion, Executive Director of Hip Hop Congress Shamako Noble flew to Olympia to support the Evergreen chapter. He said that he came in "defense of artists and cultural communities. I came out to defend the community that I am a part of...When we were done, they weren't blaming hip hop any more." The Hip Hop Congress produced a short documentary on the riot titled "It's Bigger Than Hip Hop: The Truth Behind The Evergreen Uprising." Julie Chang Schulman, Northwest regional director for The Hip Hop Congress presented the video by saying, "We offer the results of our inquiry not only as community media producers and advocates of hip hop culture, but also as supporters of the movement towards universal restorative justice and proactive restitution."

Racial Profiling?

The controversial arrest of Kaylen Williams was the spark to start the riot. Williams, a black breakdancer from Seattle, was invited to the concert by The Hip Hop Congress to perform with other breakdancers before the show. The dancing never took place, because the CRC staff laid out a tarp to protect the floor. Williams declined to comment for this article, and the principal eyewitness accounts of his arrest conflict. Although it is impossible to be certain of what happened, understanding different peoples' per-

spectives can at least help explain their actions.

Rozell Townsend, co-coordinator of Evergreen's Hip Hop Congress during the concert, said that there were about 25 "event staff volunteers," who were asked to help manage the crowd, but their responsibilities as security weren't clearly defined. Townsend said that the role of event staff "was not as clear as it should have been." Additionally, it was difficult to distinguish the volunteers from casual concert-goers. This became a problem when one of the volunteers approached a man who was smoking marijuana in the crowd.

According to an anonymous eyewitness account gathered by Professor Tony Zaragoza and published in "Works In Progress" (the witness did not want to be identified due to a police investigation into the riot at the time), a small fight broke out in the crowd after an event staff volunteer (neither a student nor a member of The Hip Hop Congress) aggressively approached someone who was smoking marijuana. A few minutes later, the same people, including the volunteer, were involved in a six-on-one fight outside of the CRC. The eyewitness recalled that "the security volunteers were extremely proud of the way they handled the situation." The eyewitness wrote that the volunteer said, "This is my job, this is what I do and I love it!" According to the eyewitness account, Williams and the anonymous eyewitness helped break up the fight and did not take part in the altercation. In a police interview with Williams conducted by the Thurston County Sheriff's Department, Williams confirmed this and said that he tried to break up the fight. Eventually, all charges were dropped against Williams. Officer Meyers, who arrested Williams,

has a different perspective. According to the Police Services Community Review Board (PSCR), an "advisory committee composed of students, staff, and faculty members, whose mission is to review complaints regarding the work of Police Services," Meyers was dispatched to a "fight in progress outside the CRC," just after midnight during dead prez's set. She was told that a confrontation arose after

"event staff security members were struggling to eject the suspect from the venue." After about an hour of investigating, during which Meyers collected statements and information from witnesses, she was told that there was only one person who was involved in the fight who was still at the concert. "Everyone else had run off," said Meyers, making Williams the only available arrest. Meyers said she spoke with a "victim who was a student employed as security," and that he pointed out Williams as the suspect. Meyers said she gathered "probable cause to arrest the suspect," and she handcuffed Williams in the crowd.

As Meyers took Williams out of the concert, a group of about 12 people followed her out of the CRC, demanding an explanation for Williams' arrest. Some of them told Meyers that she was making a "bad arrest," while others were accusing her of racial profiling. Evergreen graduate Jonathan Steiner was one of the concertgoers who was extremely concerned with Meyers' actions. "It was basically the consensus that Kaylen [Williams] tried to break up the fight," said Steiner. "People were asking why she didn't arrest anyone else. She said that anyone with statements could file them later with police, but to us, it seemed like Kaylen wasn't going to get fair treatment." The group began to grow around Meyers' patrol car as more people confronted her about the arrest. "I told people that if this is a bad arrest, then you need to tell me," said Meyers, but

because Williams was handcuffed in the back of Meyers' car, she couldn't take statements from witnesses. "My intention was to make the arrest and bring [Williams] back to the police station, so he could tell me his side of what happened," said Meyers. The PSCR said that Meyers "offered to take contact information" of witnesses in order to gather additional statements later on by phone, but the crowd responded with "obscurities," and "derision." "I was empathetic to them, because I absolutely understood where they were coming from," said Meyers, "but I thought that when I explained to them what had happened, that they would understand, but I was completely wrong." Meyers called for "administrative assistance," so that additional statements could be taken from witnesses. After two Sheriff's Deputies arrived to take statements, Meyers began to drive off, but the crowd moved to block her path and surrounded her car. At that point, there were about 75 people demanding Williams' release.

So, why was William's arrest considered unjust? Because Williams, a black man in a predominantly white crowd, was the only one who was arrested, and although Meyers had probable cause to arrest Williams, many people in the crowd asserted his innocence. The event staff volunteer who accused Williams and pointed him out to Meyers was allegedly an aggressor himself, according to Zaragoza's anonymous eyewitness. Additionally, dead prez' anti-oppression and pro-justice message almost certainly had some influence over the crowd. All of these elements contributed to the crowd's belief that Williams' arrest was an unjust case of racial profiling.

Whether or not Williams' arrest actually was a case of racial profiling is still debated. The PSCR concluded that "Officer Meyers made an arrest based on probable cause, not on racial profiling." And Meyers has always denied that her decision to arrest Williams had anything to do with race. When I asked Meyers for her opinion of the riot, she said, "I think the whole thing was an extreme exercise in irony, because I am a person who has gone out of their way for race justice. I wore anti-racist t-shirts in college. I quit a job based on a racist remark by an employer. I am so of the same mindset that racism is alive in our society. It's even alive in law enforcement to a degree. I thought Evergreen would be kind of utopian: here is a police officer who totally believes in justice and equality. But, I was wrong about that."

The dead prez riot is widely considered to have been a racially-motivated event by many people in the Evergreen and Olympia community. Olympia's Students For A Democratic Society released a statement saying that they "condemn the racist arrest," and in doing research for this article, I heard many people say that Williams was racially profiled. But why is it remembered as a racist arrest? The answer is undoubtedly complex. Did people make judgments before knowing the facts? Is it because a justified arrest would invalidate the entire riot, violence, investigation, moratorium of concerts, and prosecution of crimes that followed? The Olympia and Evergreen community considered William's arrest an unjust act of racial profiling, in order to justify and explain the entire dead prez riot.

In Part 2:

An analysis of Evergreen's investigation, faculty opinions, police brutality, criminal investigations, and activist views.

Homelessness at Evergreen

Student Submission

BY KATARZYNA SLIWINSKA

Homelessness Census intern at the City of Olympia

My interest in homelessness among students of higher education was sparked by my work as an intern, contracted to conduct the Thurston County Homeless Census Report. As we were nearing the end of January, I began my research on homelessness among college students, helping with promotion, or simply by completing the survey.

With that came a request from my supervisor to continue a project that was started a few years ago by another intern. The project involved a survey based on an instrument developed by the Washington State of Commerce, as well as other initiatives pertaining to homelessness at Evergreen. I am writing to invite interested students and other members of the community to participate in the project by taking part in its development.

On a single day in January 2013, according to the Annual Point-In-Time Homeless Census Report, 20,336 people were homeless in Washington State. This snapshot of who is homeless and why takes place every year across all counties in order to quantify needs, assess resources, and refine new strategies. In Thurston County alone, 686 people were found to be homeless on Jan. 24, 2013. These results successfully capture homelessness in the urban hub, however, in spite of the ongoing outreach efforts, the census is unable to reach all the people of rural communities and people "off the grid" of social services. On top of that, there continues to be a lack of

information on homelessness in higher education all over the country. Even though 58,000 applicants nationwide self-identified as homeless in the 2013-2014 academic year on the Free Application for Federal Student Aid (FAFSA), research on homelessness at colleges and universities is scarce. Which begs the question - how many homeless students attend The Evergreen State College?

In the past, two surveys were conducted in order to illustrate the reality of homelessness among college students at Evergreen. The surveys found some startling results; in 2011, 46 students self-identified as homeless,

The surveys found some startling results; in 2011, 46 students self-identified as homeless, or lacking fixed, regular, or adequate housing. In 2012, 35 students reported being homeless.

or lacking fixed, regular, or adequate housing. In 2012, 35 students reported being homeless at the time of the survey. This year, for the third time, we hope to continue the examination of homeless-

ness in higher education, and with that knowledge make recommendations on how to better support students who are struggling with homelessness. Many universities overlook the issue of student homelessness, and fail to provide resources such as meals, shelter, or contact points. Fortunately, the Evergreen community is conscious of some of the students' needs, and has taken steps in providing support for the struggling.

Recently, Evergreen opened a satellite of the Thurston County Food Bank on campus. It also continues to operate the free store, which provides clothing and other items available for anyone visiting the HCC. However, many other needs remain unaddressed, such as safe sleeping areas open especially during the cold weather, 24-hour public restrooms, or contact points. By conducting the Homelessness in Higher Education Survey, we hope to raise awareness, to find out the needs of students, and to involve the college in helping these students.

Often, services that helped homeless children and youth in kindergarten through high school cease to support students attending postsecondary institutions. Addition-

ally, students who have not been homeless prior to attending college may experience situations that force them into homelessness, and may not be aware of resources available. Situations that may have caused student's homelessness might include poverty, eliminated or reduced work opportunities, low public assistance, lack of low-cost housing, illness, or an intolerable roommate situation, such as domestic violence, drug use, or extreme incompatibility. When people find themselves with no place to stay at night they resort to sleeping in cars and public spaces, camping in woods, or "couch surfing" - situations which put them in danger. Students without access to housing, workspaces, showers, or food, struggle to balance education and other responsibilities. To help these students achieve their educational goal, as well as raise their quality of life, programs need to be devised to accommodate homeless students. In order to create such


programs and know what kind of programs need development, we must eliminate the statistical gap present in postsecondary institutions.

For the next month, we will coordinate campus events promoting the Homelessness in Higher Education Survey, as well as conduct the survey both in person and online, in order to establish a firm ground for continuing this project annually and most importantly create a momentum for change.

Katarzyna Sliwinska is the Homeless Census intern at the City of Olympia. You can contact her to get involved at slikat26@gmail.com or (425)-505-0027. If you want to learn more about homelessness in higher education or in Thurston county, you can check out the Thurston County Homeless Census Report on the www.co.thurston.wa.us website.

Help us help you!

Take the Homelessness in Higher Education Survey



<http://goo.gl/ZAHhGn>

For more information contact Kat Sliwinska at slikat26@evergreen.edu

Campus Life

a.



POP QUESTION VALENTINE'S Day Edition

BY SARA FABIAN
and RAY STILL

b.



a. PAGE ARCHER

If you could make your own candy heart, what would it say?
"Buy me wine"

b. ALICE NEWBERRY & KYLIE O'NEIL & MARIAH GONCHAROFF

What do you do to practice "self love"?

MARIAH: When I get really high, I sit in front of a mirror and say how beautiful I am. (laughs) I wish I'd do that sober too.

ALICE: I watch cult/serial killer TV shows and listen to Kelly Clarkson. I like the gory and gruesome paired with empowering women.

KYLIE: I like to do an array of things because that's what I want my life to be based on, self love. But, the most powerful things I do are journaling and always listen to my intuition.

c.



c. JULIA ELLIS

What do you do to practice "self love"?
I meditate and reflect.
Best-worst love song?
Retrograde by James Blake

d.



d. JANESSA GIL

If you could make your own candy heart, what would it say?
"Insert cheesy quote___"

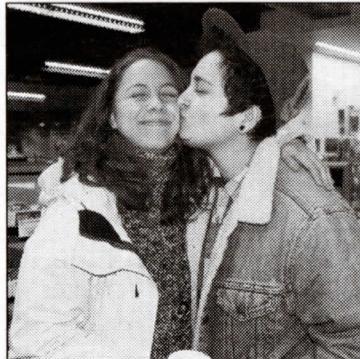
e.



e. BRYANNA ANTELLE

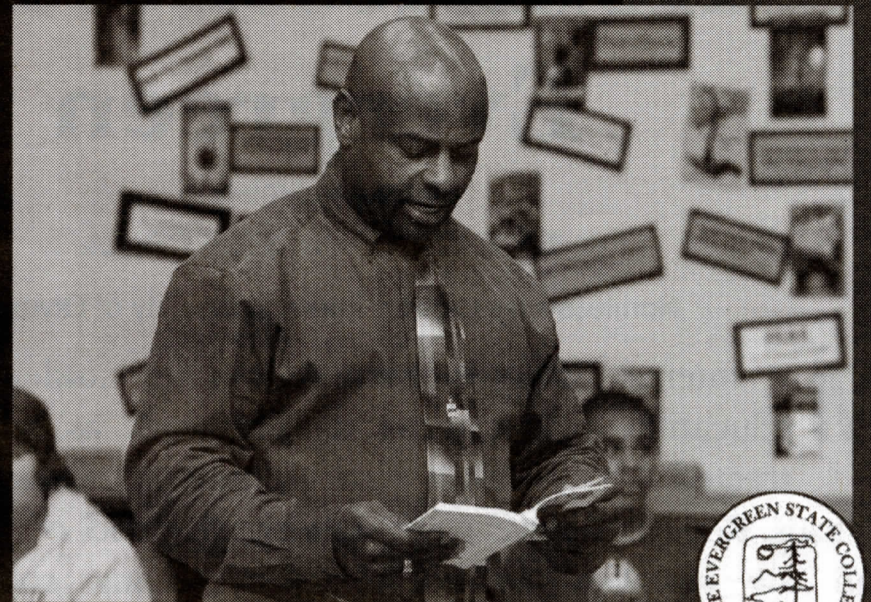
If you could make your own candy heart, what would it say?
"I naturally select u"
How do you practice "self love"?
I use positive affirmations and positive self-mantras. I really try to change negative phrases into positive ones.

f.



f. HEL DASTVAN & KOTOMI YAMAMURA

If you could make your own candy heart, what would it say?
HEL: "Can't w8 to lick ur pussy"
What do you do to practice "self love"?
KOTOMI: Dance in the kitchen, everyday.



Eugene Bradshaw (MIT '06), Army Command Sgt. Major (Ret)
7th and 8th Grade Special Education teacher at Lochburn Middle School, Lakewood



MiT
MASTER IN TEACHING
PROGRAM
at the evergreen state college

Put your knowledge and experience to work where they're most needed.
Become a teacher.

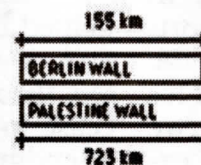
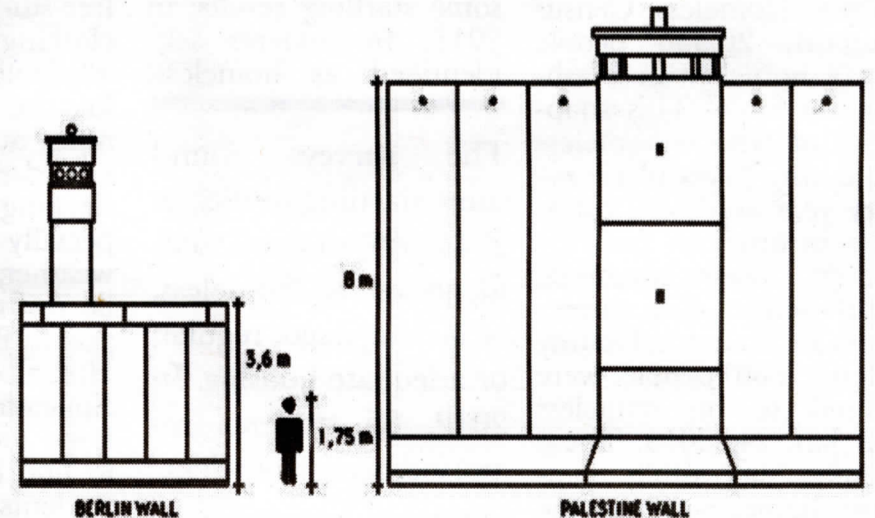
APPLY NOW through APRIL 7 for the 2014 MiT Program at Evergreen

www.evergreen.edu/mit

SAVE THE DATE FEBRUARY 24TH- MARCH 2ND 2014

10TH ANNUAL

ISRAELI APARTHEID WEEK



SEE CALENDAR FOR DETAILS ON EVENTS

MORE INFO: apartheidweek.org

END THE OCCUPATION



RUBY THOMPSON

Water to Beer: A Timeline of Drinking and Industry

BY CASSIE JOHNSON-VILLALOBOS

OLYMPIA'S HISTORY as a brewery town goes back to just seven years after Washington turned from United States territory to a state of its own. A relatively unbroken legacy spanned from the 1896 establishment of Capital Brewing Company by Leopold Schmidt until 1983, when Olympia Beer was acquired by Pabst Brewing Company. The following timeline represents a few choice moments in Olympia's transition from muddy logging town to the place we know today.

1895: Brewmaster Leopold Schmidt travels from Montana to Washington state as part of the Montana Capitol Commission's efforts to accelerate settlement in the former Washington Territory.

Schmidt and his brother locate an area in the vicinity of the old capitol's construction site, near the base of Tumwater Falls. The Schmidt brothers select the future site of Capital Brewing Company based on its high number of natural artesian wells.

On September 18, Local paper "The Daily Olympian" runs a story entitled "Leopold Schmidt Announces Plans to

Build Brewery."

1896: First brewery is constructed from local timber, the source of the area's first big industries.

1902: Schmidt rebrands his company as Olympia Brewing Co. and adopts slogan "It's the Water."

1906: Original brewery reconstructed and expanded with Chehalis brick, Tenino sandstone, and plenty of local sand, gravel, and lumber. The 1906 brewhouse still

stands today, and remains iconic of the brewery's early role in local industry.

1914: Leopold Schmidt dies. His son Peter inherits the company.

1915-16: Washington state prohibition begins. Brewers have one year to sell off remaining stock. Olympia production switches to fermented and sparkling beverages, including two carbonated juices, Appleju (apple "champagne") and Loju (a loganberry variation). (picture)

1918-21: World War I causes sugar shortages that compromise the soft drink industry and severely limit production. The Schmidt family is eventually forced to sell the old brewery, which is then repurposed as a paper mill.

1933: Prohibition repealed! Peter Schmidt orders the construction of larger brewery buildings upriver from the 1906 building, rather than repurchasing and retrofitting the aging structure. This day is still celebrated every year in Olympia at the Capitol Theater.

1935: Olympia Brewing Co. becomes the first West Coast brewer to introduce the 11 oz. stubby bottle.

1950: Olympia's first beer cans are released after over a century of solely bottle and draft production.

1951: Capitol Lake dam and lock construction is completed. The Deschutes River mouth and south end of Budd Inlet, formerly connected by wetlands, become separated by the man-made lake.

1955: Brewery "bottle shop" employee Ted McGill starts O'Bee Credit Union to serve the financial needs of his coworkers and their families.

1957: As the county seat, Olympia hosts its first Lakefair to celebrate the new recreational capacity of the lake.

1960s to '70s: Zip-tabs introduced, making old-fashioned can-openers and beer keys obsolete for Olympia Beer drinkers.

The brewery reissues its 1900s memorabilia—which accounts for many of the Olympia Beer collectibles popular since the brewery's closure.

1964: Schmidt family buys back the 1906 brewery from Western Metal Craft, which used the space for making cabinets. The "old brewery" becomes storage for the newer brewery buildings upriver.

1974: Leopold "Rick" Schmidt becomes president of the family business.

1978: Rick Schmidt, among other

prominent community figures, is arrested for lewd conduct in the Capitol Lake Bathroom Bust: an intensive local police sting that targeted the popular gay cruising spot. Schmidt resigns from his position the next day.

1983: Pabst purchases Olympia Brewing and continues to operate the factory complex as-is for two years before selling to General Brewing. Several employees use severance as an opportunity to purchase local drinking establishments.

1985: Pabst moves out—gutting buildings and selling off large vats and machinery in the process. General Brewing moves in.

1993: Fish Brewing Company opens a brewhouse and pub restaurant at the intersection of Jefferson Street and Legion Way in downtown Olympia. Fish Brewing begins to use the Olympia Brewery's 5 p.m. whistle at its own brewery building. Fish Brewing blows the whistle to this day.

1999: SABMiller buys the Olympia Brewery facilities from General Brewing. Relations with state, city, and tribal officials become fraught with water right disputes over the years of Miller's operation in the area.

2003: Miller leaves on Jan. 13, placing an indefinite halt on alcohol production within brewery grounds as part of its settlement. Miller continues to produce a light lager under the Olympia name in Irwindale, CA.

2004: Fraudulent entrepreneur L. Eric Whetstone skips town with investors' money after promising to establish a bottled water company in the former brewery's facilities. Court proceedings result in a foreclosure on the property.

2013: Miller Brewing Co. cooperates with local officials to bring a close to its 10-year brewing moratorium on the historic brewery site. King5 reports "Beer could come back to old Olympia brewery in Tumwater."



1906 Brewhouse at Tumwater Falls
Courtesy of Michael D. Martin

Visit cooperpointjournal.com to see a full timeline with images.

COMICS

LACES



BY JOEL SKANDAH

FEBRUARY 13, 2014 - FEBRUARY 26, 2014 / THE COOPER POINT JOURNAL 14

WASTED ADVICE

How do I ask that special someone to be mine?

-Speechless

"Hello" is a favorite starting point, personally.

How do I make this Valentine's Day hot-hot-hot?

-Turn It Up

Try something you've never tried before, but always wanted to. A good way to make sure your significant other is turned on is to be as turned on as possible yourself. Do something wild, kinky, maybe illegal. Unless you were being literal- then just go fuck in a steam room.

What are the best and worst gifts to give for Valentine's Day?

-Shop 'till I Drop

Best: Sex

Worst: Not Sex

How do I not get depressed for Valentine's Day?

-Shot Through the Heart

I've made you a special VD cocktail:

-One part liquor of your choice: two parts no shit given
-Repeat

How do I cope if I don't have a Valentine's Day date? Is it socially acceptable for my mom to be my date?

-I <3 MOM

You can absolutely take your mom on a Valentine's Day date. You can go out to a fancy restaurant. It's appropriate for either one of you to pay. You don't have worry too much about your manners, you can be relaxed, it's kind of the perfect date. But there is one important factor that you must remember at all costs. Once the date is done, you're headed home for the night with a bottle of wine in you... You Can. Not. Fuck Her.

How should I respond/what should I do about a note from my secret admirer?

-Creeped Upon

Act cool. Smile, laugh a little, shrug it off, and put the note away. You never know when they're watching.

As Valentine's Day approaches I am left with a sense of lonely bemusement. The only place I

meet new girls is drinking out at the bars. Unfortunately this has about as much effectiveness as finding a Jaguar in a junkyard. Where would you suggest meeting new women for someone looking for a more substance filled female?

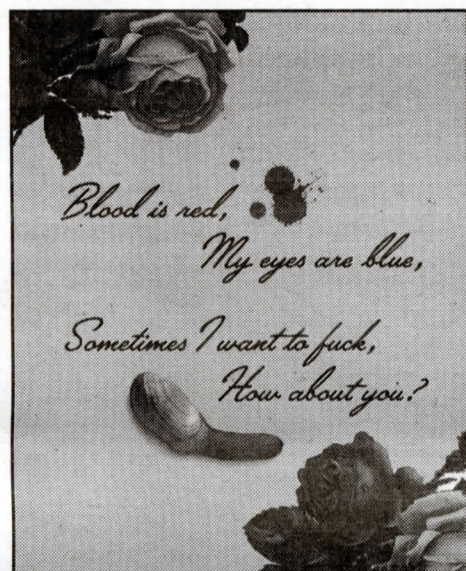
-Dumpster Diver

If you're having no luck in the junkyard, I suggest the dealership.

What's the best way to protest Hallmark?

-Can't Find the Card

Replace all the cards at your local department store with some new ones that you've printed off at Kinko's. For instance:



My boyfriend and I decided to get each other romantic gifts for V-Day, ones that said more than words alone could. I got him an old, brass key, signifying the key to my heart. He got me an old, bobble-head Abe Lincoln. What is he trying to tell me?

-Broken Lock

I'm fairly sure that he's trying to tell you "Labor is prior to, and independent of, capital. Capital is only the fruit of labor, and could never have existed if labor had not first existed. Labor is the superior of capital, and deserves much the higher consideration." Basically it's a marriage proposal.

When is the right time during a one-night-stand to ask about STD's and birth control? It needs to be talked about, but can be a mood killer. Is there a best way or time to bring it up?

-STD free since '93

As is true with many solutions to life's little problems, the answer here can be traced back to copious amounts of booze. When you realize that the individual you've been chatting up at the bar is actually going to go home with you, start pounding those shots.

Don't worry about being too drunk- if your new friend wasn't wasted, they wouldn't be about to jump in bed with a stranger. Now that you're both hammered, neither of you will care about little details like "it-burns-when-I-pee" and "unwanted children." Problem solved.

Should I go on a first date on Valentine's Day?

-Newbie

No. Non. १. Geen. pa gen okenn. Nicht. Hindi. Tsis muaj. Kahore. ॐ. Nulla. Нет. Babu. Nej. Akukho. ямар ч. Nie. Hayır. نينى. Neniu. Aon. He. Hema. Hakuna. Dim. No.

How can one get a VD date at the last minute? Or would you suggest an entirely different activity on VD Day?

-Procrastidater

Often times, a Craigslist Personals add will yield fun and unexpected results. No one who is out on a traditional Valentine's Day date with their long term other will end up having a three-

some with a 65 year old couple, being video-taped having sex with a seven-foot-tall stuffed rabbit.

How do I get my drug dealer to fall in love with me?

-Addicted 2 U

Finally, an easy one. The more drugs you buy, the more he'll love you.

What is the best way to participate in Valentine's Day when you're single?

-Lonely "Heart's" Club

Rainbow Party.

What do I do if I have crush on my instructor?

-Hot 4 Teacher

Seduce them, give them the best night of their life, then blackmail the shit out of them for 16 credits.

Got life-or-death questions that need to be answered? Submit them to the country's **only** best alcohol-fueled advice column at cooperpointjournal@gmail.com



OBEE CREDIT UNION

HERITAGE *Collection*

**Debit Cards
with Reward Points**

ORDER YOURS TODAY!



Featuring:

- Reward Points
- Free Checking
- Free Home Banking
- Free Mobile
- Free Bill Pay
- Free Money Manager

Get the card that has it all. Order yours today.



OBEE
CREDIT UNION

www.obee.com/heritage
360-943-0740