

Cooper Point Journal

Volume 27 • Number 2

The Evergreen State College

October 3, 1996

Public Safety no longer; name change is more than cosmetic

By Trevor Pyle

Public Safety has always been the most metamorphic of Evergreen's departments. Every few years, it seems to be reincarnated into a new form.

Over the summer, it changed shape again.

In September, the security force responsible for Evergreen's law enforcement changed its name from Public Safety to Police Services. The change is more than a name, though, and could have a far-reaching impact on the Evergreen community.

The name change signifies an increase in the department's role. Instead of the role they held before, when intervention was limited to certain situations, Evergreen's Department of Police Services will soon be a fully functioning, state-sanctioned police department. Unlike before, the officers will be able to pursue suspects off-campus, intervene in any situation, and carry firearms.

When asked if these officers are as well trained as those in nearby Olympia or Lacey, Steve Huntsberry, Director of Police Services, says: "Just as good-or better."

Huntsberry goes on to explain that, while the officers have all passed training at the Washington State Police Academy, they have also had training specific to the Evergreen community. Recently, the Police Service officers trained with Housing staff for better interaction in the future. Down the road will be training to recognize sexual harassment and defusing hostile situations.

The change from Public Safety to Police Services has not been without its cosmetic changes. Lock boxes for firearms arrived, and new uniforms—something both authoritative and specific to the community, Huntsberry says—are being scouted. Police Services bought a second patrol car from the Olympia Police Department. Both cruisers were re-painted, the most significant change being the green stripe down the side. Written down the stripe are the words "TESC Police".

The most controversial change in Evergreen security's role has been the approval of firearms, and they have arrived, too; sleek-looking Glock pistols, .40 caliber, sheathed in a holster specifically designed so that someone unfamiliar with the holster can't remove the weapon. The officers will wear the guns between 6 p.m. and 8 a.m., and carry them in patrol cars during the day. This will begin once the officers finish training and qualifying. They will have to re-qualify every quarter.

Police Services has also opened a substation in the Housing community center. This station is currently manned by Sergeant Darwin Eddy during his shift, usually afternoon to late evening.

Additionally, two more officers will be hired.

Though they have undergone many changes, Huntsberry hopes there won't be any confusion about Police Service's role. He emphasizes the word *service* more than the word *police*.

"It's my hope that folks will view us as a service-oriented group," he says. "The day-to-day operations of the officers should not change. We're still going to unlock cars, pre-party stuff.....we're just going to be better prepared."

As for the *police* part of the title, Huntsberry feels it serves a purpose as well. Referring to the new cars, the ones with *police* written on the side, he says, "Well, that way people will know we don't just give out parking tickets."

— Trevor Pyle is a second year student and staff writer for the CPJ.

Bus route changes take effect



Students Vivek Ramen, Liz Goodwin, and Waing Waing walk their groceries home from the library loop.

By David Scheer

The number 44 bus running between Evergreen and through the heart of Olympia's west side has not seen A dorm for a month and three days.

As of September 1, Route 44 service to Evergreen's dorm loop was cut. In the meantime, some of the nearly one thousand student residents of Housing and others living in the adjacent Cooper's Glen Apartments have noticed the change.

According to one such resident, Summer Burdick, the new route makes her trips to the grocery store inconvenient. For her, lugging her beans, rice, pasta, and produce across campus adds significantly to the task of getting her groceries home.

Many others have felt little effect at all. F-lot, the parking lot reserved for students living in Housing, has been nearly full during the nighttimes of the past week, indicating that a number of students are not dependent on public transportation to get them to and from the dorms.

Likewise, on-campus students like Andrea Thompson, who does not have a car this year but is often able to reach the West Side by riding with friends, only take the bus on rare occasions when it is necessary.

While considering the amendment to the route, I.T. monitored the use of the 44 bus to and from campus. According to information available last Spring, an average of 78 people rode the bus to and from dorm bus stops every weekday.

As I.T. made adjustments to many of their routes in order

to cut costs and make the transit system more efficient, they felt that the decision to cut dorm service was logical.

Burdick does not understand why the bus does not make the detour to the dorms and instead waits for several minutes in the library loop. "It's not that far out of the way [for the bus]. We're just down the road... but it makes such a difference if you're on foot," Burdick said.

John Ford, a fourth year student and Housing resident who is irritated by the modifications, agrees. Regarding the cost and efficiency benefits, "I fail to see how much of a difference it really makes," says Ford.

Although he could not attend the public input meetings held by I.T. last May, John avidly coached friends and coworkers to go and speak on behalf of keeping the doorstep service. For him I.T.'s decision to change the route means fewer options for shopping and John feels that this poses "potential financial hardship."

"I'm a thoughtful consumer," says John. "I shop around, I read the ads, I make the lists."

For John, carrying "three well packed bags... across the field and through the woods" makes him avoid taking the bus to west side stores like Safeway and Top Foods. More and more he is opting for Bayview Thriftway which lie along the 41 route still serving the dorms. Otherwise, shopping competitively now means hitching a ride.

S&A Board seeking membership

By Reynor Padilla

Every quarter about \$100 of your tuition check goes into a special fund meant to pay for student groups like the Evergreen Queer Alliance, the Bike Shop and Asian Students in Alliance.

And every year a group of 10 students — called the Services and Activities Fee Review Board (S&A Board)—decides how much of the \$1,000,000 total each student group gets to use for the entire year. The Board strives to make these decisions by means of a consensus system.

You could be a part of the S&A Board, says Erin Ficker,

the board's student coordinator.

Board members will be paid \$4.90 an hour for 2-4 hours per week. Ficker says that board members should be able to come to two evening meetings every week.

Applications to be a member of the S&A Board are available at the student activities office on the third floor of the Campus Activities Building, room 320. You can just go up to the front desk and ask the nice person to give you one.

If you don't feel like trotting up to CAB 320, then give the S&A front desk a call at 866-6000 extension 6221 to find out more information.

Community to Community

Orientation program teaches students, benefits Olympia

By HILLARY ROSSI

Kitty Parker, the Director of Academic Planning and Experiential Learning, has just finished coordinating the third annual Community to Community orientation activity.

Community to Community is a two day endeavor where groups of Evergreen students go out into the Olympia area and help out non-profit social services. Four agencies are selected: Thurston County Food Bank, HomesFirst!, Bread and Roses,

the volunteerism of Community to Community.

Last Friday, first year student Liz Mansfield attended the HomesFirst! project. In the house that Evergreen students were fixing up lived a man who continuously helped out with the repairs.

"It was as though he was so grateful," Mansfield reported.

At the Bread and Roses project, students cooked burritos, rice, and salad. The response of the homeless people was staggering to the Evergreen students. When a homeless teenage girl jubilantly jumped up to the serving counter and began talking a mile a minute of how much she loved the food, first year Evergreen student Jennifer Ahrens exclaimed, "I wish everybody got that excited about our food!"

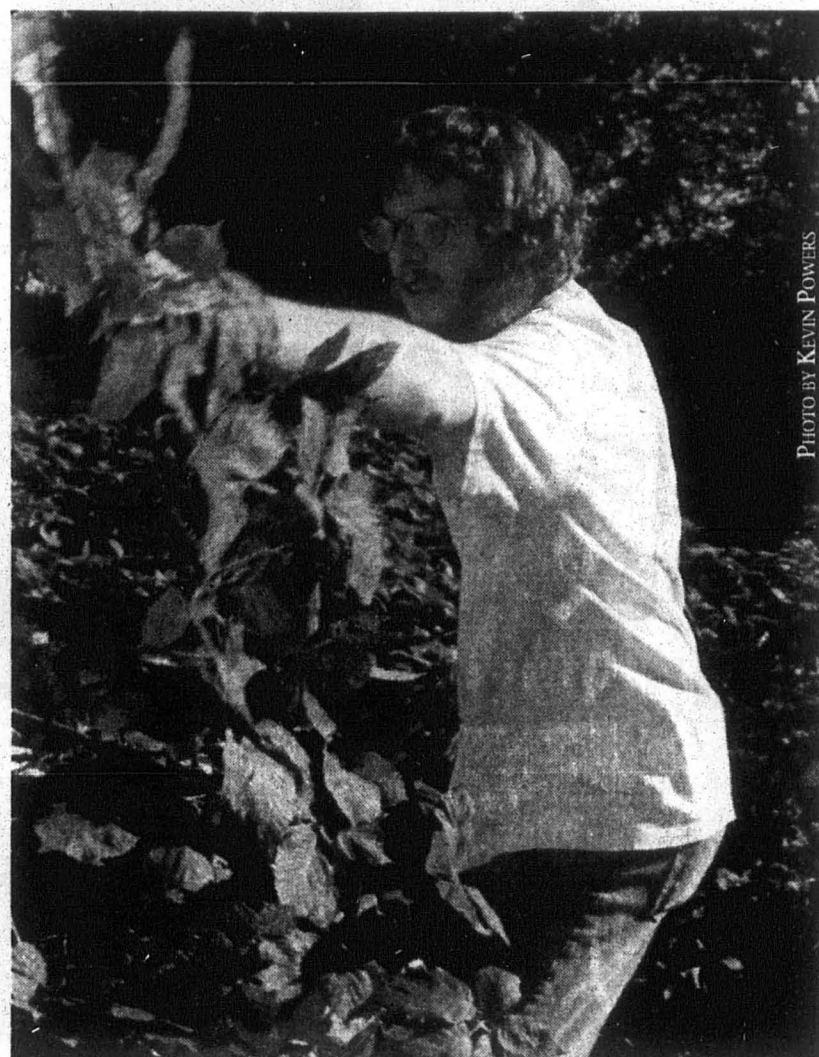
At one point during serving, the Bread and Roses volunteers saw a homeless man in sunglasses and stubble standing before the serving counter where they were serving the burritos, rice, and salad.

"God bless all of you!" he cried out.

Over the past three years the Community to Community program has only been executed during Orientation Week in the fall. However, the Housing Department is sponsoring the Resident Outreach Council (ROC). The Council will promote community projects for Housing residents which will be similar to the Community to Community projects. The ROC's projects will be going on all throughout the year.

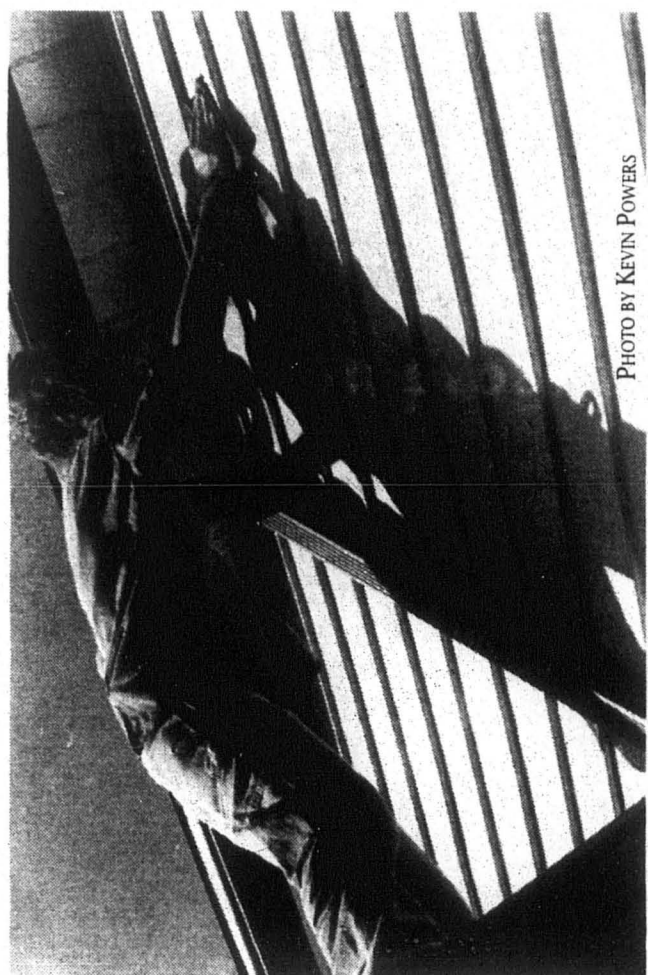
If you want any more information call Chuck McKinley at 866-6000, extension 6191.

— Hillary Rossi is the Interim Features and Interim Newsbriefs Editor for the Cooper Point Journal.



Bill Hibbert

PHOTO BY KEVIN POWERS



Madeline Gallagher

PHOTO BY KEVIN POWERS



Liz Mansfield

PHOTO BY KEVIN POWERS

and the Thurston County Conservation District.

The non-profit organization of HomesFirst! builds houses for low income families.

The Thurston County Conservation District fixes the stream banks for the salmon run and controls the erosion in the Olympia riverbank area. This group is made up of the largest number of Evergreen students.

The Thurston County Food Bank provides food for hungry people.

The Bread and Roses organization makes food and serves it to homeless people in Olympia.

The Community to Community projects were set up for two reasons.

"[The students] get a chance certainly to meet new students," Parker boasted, "and do useful, important work for the community."

Parker knew she had a successful program when 80 students turned up to help out in one afternoon during Evergreen's Orientation Week, 1995.

What excites Parker most is that a majority of the students are on the brink of their first year at Evergreen. According to Parker, first year students are more apt to benefit from the program because they are in the most need to come together with the Evergreen community.

What excites the students most is the response of Olympia citizens who, in the end, benefit the most from

Eratta

In the last issue of the CPJ we misprinted the Olympia beer slogan as "It's in the water." The slogan should have been printed accurately as "It's the water." We apologize for any confusion this may have caused.

please feel free to write any corrections for this issue on this piece of paper and submit it to us.

Theft suspects nabbed when answering page from cops

By JEFF AXEL

On Friday, August 30 at 1 am, three crime-minded individuals broke into several campus residences. These included R108, R110 and an apartment in Cooper's Glen.

According to Evergreen Police Services Lieutenant Larry Savage and summer Housing Resident Director Francis Morgan-Gallo, the story unfolded as follows.

Francis said that two suspects were looking to purchase some marijuana from a resident in R dorm. Reportedly, they felt the price was too high and left.

After partying in Coopers Glen, the two suspects returned to R dorm. They tried opening Francis' door.

Francis had failed to completely turn the deadlock knob on his front door. According

to Francis, his lock was not working. One turn of the knob allowed the two and a cat to enter the apartment.

The two took Francis' bike, his backpack, 10 CD's and four Housing master keys. In the backpack was a Housing handheld radio and pager. They then left to go to R 108.

By this time, the cat had walked over Francis' feet and woke him up. Francis explained, "I didn't hear a thing." Francis thought he was dreaming that he was being robbed. "...They let in the cat...I got up, put the cat out, locked the door and went back to bed. I didn't realize it was a dream until I got up in the morning and realized my stuff wasn't there."

In R 108 there was a person sleeping on the floor in the common area. Still, the two

allegedly took some large Paradigm speakers, a bike and about 55 records from the living room.

Meanwhile, a third suspect who was friends with the other two, went into a residence in Cooper's Glen to steal some items. This suspect had a \$6000 warrant out for his arrest regarding a previous crime.

In the morning, Police Services was notified of the crimes, and Housing was notified that the masters were taken. The stolen masters created a headache for Housing locksmith Milt Sanders, who had to change nearly one hundred locks for Housing.

Savage had an idea. "We tried the pager to see if they would be stupid enough to call back." He asked his daughter, who had Residential Caller ID, to call the pager.

She did, and one of the suspects called back.

The caller ID supplied Savage with the name of the person who lived at the address where the call was made.

Savage contacted a detective who obtained the address from US West. Savage and a few of the other Public Safety officers went to the residence. However, two of the subjects left before back up from the Olympia Police Department arrived.

Savage found Francis' bike under some cardboard. Savage also found the licence from a bike that had been stolen from R108.

The woman who initially answered the door, according to Savage, "seemed to want us to go away, so she directed us to the location of the other bike at another residence." Savage and his team went to that residence and talked to the parents.

One hour later, the parents came to campus with their son and the bicycle.

By this time, Lt. Savage had enough information to ask the Thurston Co. district court judge for a search warrant for the residence where Francis' bike was found. The judge gave it to him over the phone.

On Labor Day at 7:30 AM, Lt. Savage, Evergreen Police Services and the Olympia PD entered the residence while everyone was asleep. Says Savage, "I wanted to catch everybody in bed so they wouldn't have a chance to ditch the stuff."

Evergreen PS and the Oly PD apprehended several individuals who at the time shared \$20,000 worth of warrants.

Almost everything was returned to their respective owners. Francis got his bike, backpack, keys and radio returned, but he didn't get his bike light, a poly-pro turtle neck and a pocket knife back.

His pager had been smashed.

According to Savage, almost all of the stolen goods were returned. The suspects will most likely serve from a month to a year in prison, and each will pay between \$250-\$500 in fines.

As to which of the three it was that returned Larry Savage's pager, none of the suspects would fess up to it.

After eight months of cafeteria food, all-nighters,



cramped dorms, and that annoying person down the hall, you'll be ready for this. Really ready.

SEAFIRST'S SPRING BREAK SWEEPSTAKES

Think Spring Break. Seafirst is. In fact,

they want to send you and three

friends on a Spring Break getaway with

Alaska Airlines. Or give you other cool

prizes like a Specialized® mountain

bike, a Pentium™ computer, even

\$1000 towards your tuition.

GET A GREAT CHECKING ACCOUNT & ENTER TO WIN

Open any Seafirst personal checking

account and you'll be automatically

entered to win. You'll get your first

order of checks free, too. Also

available: Versatek® Checking

(free of monthly service charges),

student loans, credit cards, and more.*

Sign up today at any local branch or

call 1-800-24-FIRST. (TTY/TDD users

dial 1-800-232-6299.)



W. Olympia Top Foods Branch • 1313 Cooper Point Rd. SW • 352-4280
Black Lake Branch • 910 Black Lake Blvd. • 754-3630

No purchase necessary. Sweepstakes begins August 10, 1996 and ends October 24, 1996. See official rules (available at any participating branch) for details. Void where prohibited. *Student loans and credit cards subject to credit approval. Member FDIC.



Excellent Selection in the Hard To Find!

Music

New and Used CDs, Vinyl, Tapes, Independent Releases

Movies

Olympia's Largest Selection of Foreign and Independent films

A Section Devoted to Great Directors

Action from Jackie Chan and John Woo

Monday Night Special Rent 2 or More Movies and they're 98 cents apiece!

Special Orders Welcome

357-4755 In the WESTSIDE CENTER AT DIVISION & HARRISON

Mon-Wed Thur-Sat Sun
10am-8pm 10am-9pm 12am-5pm

Men's Center needs coordinator, ideas

The Men's Center is looking for a coordinator. The Men's Center is a student group that functions out of the Student Activities office on the 3rd floor of the CAB.

Ralph Nader for President, 1996

Olympians are invited to get involved in the Ralph Nader for President, 1996 campaign. The effort is 100% grassroots and any amount of time and energy that people can contribute is welcome.

There will be an organizational meeting Wednesday, October 9, at 5:30 p.m. at the LiberationCafe, located above Bulldog News on 4th Street downtown.

The Eastside Women's Health Clinic needs volunteers

The Eastside Women's Health Clinic needs for clinic volunteers to shield patients from pro-life demonstrators. The volunteers will work for 2 hour increments. Abortion services are offered every Thursday, 8:30 a.m. to 3:30 p.m.

Lunchtime Aerobics are back

The Wellness Program at the CRC will hold Lunchtime Aerobics Tuesdays and Thursdays, October 8 through December 5. It is between the lunch time of 12:15 to 12:45 p.m. in CRC 116.

Board of trustees representatives needed

Art Constantino, the vice president of student affairs says he is searching for people to represent Evergreen's student body to the board of trustees.

The board of trustees is a group of governor-appointed, non-Evergreen community members who make most of the major decisions for the school.

In the past student representatives have tried to represent Evergreen students' interests in the board.

Constantino also wants to form a committee of students to help choose the student reps.

The committee, which will be called a disappearing task force or DTF, will be appointed by Constantino.

Once appointed, the DTF will evaluate the student rep candidate's and President Jane Jervis will consider who she should choose for the student rep jobs.

Jervis will ultimately decide which candidates will be the new student reps.

If you are interested in applying to be a student rep, or a DTF member, you can call Constantino at 866-6000 extension 6296.

Submitted by Reynor Padilla

Computer Company needs employees

American Computer Resources, Inc. is hiring high school and college students across the country to assist Study Web. Study Web is a free on-line encyclopedia of research material sites to help students and teachers spend more time gathering information rather than searching for it.

For more information on these research jobs call 203-380-4600 or e-mail http://www.the.acr.com/studyweb/studyweb.htm.

Field trip to Percival Park

On October 5, a field trip will commence to Percival Park or Kennedy Creek to see the salmon (the location depends on where the salmon are running). The participants will look at the life-cycle of the salmon in Washington state streams and learn about their dependence on a healthy living environment.

Computer Center remodeled over the summer

The campus computer center was expanded and remodeled over the summer.

The center now has a bigger Macintosh lab, a new air circulation system and a slicker consultants' desk.

The printers have been moved to the out of their windowed room to a new table at the north end of the center.

Security at the computer center has also been beefed up. In the past, people used to climb over the computer center walls by removing the ceiling's thin section of plasterboard.

To stop climbing computer theft, workers built the computer center walls up to the cement ceilings of the library building's second floor.

Submitted by Reynor Padilla

New employee at Evergreen

Debra Blodgett has joined the Academic Deans' Area staff and is Evergreen's new Faculty Hiring Coordinator. Previous to coming to Evergreen, Debbie was the assistant to the Dean of Students and the Director of Personnel at Walla Walla Community College.

COOPER POINT JOURNAL

CAB 316, The Evergreen State College, Olympia, Washington 98505

Editorial 866-6000 / x6213

Business 866-6000 / x6054

Advertising 866-6000 / x6054

Subscriptions 866-6000 / x6054

Internet cpj@elwha.evergreen.edu

Weekly Story Meetings Mondays at 4:30 pm in CAB 316

The Cooper Point Journal is directed, staffed, written, edited and distributed by the students enrolled at The Evergreen State College, who are solely responsible and liable for the production and content of the newspaper.

News Editor-in-Chief: David Scheer Managing Editor: Melissa Kallstrom Interim Features Editor and Interim Newsbriefs Editor: Hillary N. Rossi Interim Photo Editor: Gary Love Interim A & E Editor: Jennifer Koogler Interim Comics Page Editor: Marianne Settles Interim Calendar Editor: Cristin "Tin Tin" Carr Interim See-Page Editor: Jenny Jenkins Interim Security Blotter Guy: Cameron Newell Guest Caterers: Debbie Knudsen, Jane Xiong Interim Copy Editor: Bryan O'Keefe Contributing Writers: Bill English, Jeff Axel, Trevor Pyle, and Reynor Padilla.

Business Business Manager: Keith Weaver Interim Asst. Business Manager: Dawn Holmes Advertising Representative: J. Brian Pitts Ad Designers: Marianne Settles, Gina Coffman Interim Circulation Manager: Cristin "Tin Tin" Carr

Advisor Dianne Conrad

BAGEL BROTHERS Bagel Bakery and Sandwich Shop

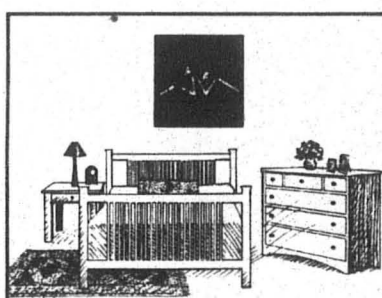
OVER 15 VARIETIES BAKED FRESH DAILY OPEN 7 DAYS A WEEK ESPRESSO CATERED TRAYS

M-F 7-7 Sat 8-6 Sun 8-5

OLYMPIA - WESTSIDE Between Ernst & Payless 400 Cooper Pt. Rd. 352-3676

OLYMPIA - EASTSIDE Next to Low Rents 2302 East 4th Avenue 943-1726

LACEY Next to Fred Meyer 720 Sleater Kinney Rd. 456-1881



THOUSAND CRANES FUTONS AND FURNITURE

Fine, locally crafted furniture... planet-friendly design solutions... certified organic futons...

416 S. CAPITOL WAY • OLYMPIA, WA OPEN 7 DAYS A WEEK • (360) 357-8464

THE FIRE SIDE BOOKSTORE

HOURS Monday - Saturday 10 - 6 o'clock Sunday 11 - 4 o'clock



Jane Laclergue Proprietor

The Olympian Hotel 116 East Legion Way Olympia, WA 98501

(360) 352-4006

LONDON \$249 Paris Frankfurt Tokyo Bangkok Auckland Sydney \$285 \$275 \$325 \$375 \$503 \$545 Council Travel U DISTRICT CAPITOL HILL 4311 University Way NE. 219 Broadway Ave. East Seattle, WA 98105 632-2448 329-4567

Security Blotter: July 1- September 27

July:

- 7-2 0800 Theft of tabs from B lot 1752 Suspicious backpack spotted in Red Square 7-6 0233 Random fire alarm pull in H 7-9 1052 Man found asleep on the roof of the Library 7-13 1930 Reported purchase of a controlled substance supposedly for use and distribution 7-17 1637 Fire alarm activated in C-dorm by assorted dust particles 7-18 2022 Traffic Accident: car vs. CAB Building 7-19 0850 Theft of fire extinguishers reported 1209 Malicious discharge of fire extinguishers reported 7-20 1330 Items removed from Police Services office without consent 7-23 1423 Garbage can ignites due to improper cigarette disposal 7-24 1223 Miscreants pull fire alarm in F 1631 Fire alarm stimulation in A 2008 Violent incident in Greenery 7-31 1430 Toxic fumes discovered in Library building...

8-7

- 1727 Walking Accident: bookstore employee vs. safe 8-13 1400 Bike theft



if Public Safety = Police Services, then Security Blotter = ?!

The CPJ is having a contest to rename the Security Blotter in order to reflect the change of Public Safety to Police Services. The winner will get their name and photo printed in an upcoming issue of the CPJ. All entries are due Thursday of week 2 (October 10) in the CPJ office, CAB 316. All entries must include the full name and phone number of the entrant. Entries will be judged by a team of CPJ staff members. If more than one person submits a winning entry, all will win.

8-18

- 1542 Bike theft 0200 D dorm evacuated due to malicious fire alarm pull 0848 Miscreant logging truck drops its load on the parkway. Traffic backed up for a good bit of time 1620! Nine sprinkler heads stolen from Red Square. Someone

August:

- 8-3 0110 First floor of R-dorm egged 8-4 1043 Miscreants burglarize F

8-22

- 0949 Wallet theft 1659 Bike accessory theft 2047 Bike accessory theft 2321 Three miscreants launch watermelons from the clock tower. Injury only to the melons themselves 8-23 1685 Random theft from R-dorm 8-30 0710 A first floor apartment in R-dorm is burglarized 0900 The other first floor apartment in R is burglarized

September:

- 9-5 1002 Campus entrance signs defaced heartily with spraypaint 9-16 1620 Unauthorized rollerbladers enter library building 9-19 1207 Temporary suspension of toilet privileges in Seminar building due to unauthorized sewer line malfunction 1855 Boot placed on car in C-plot, rendering it immobile 9-20 1711 Peace and tranquility disturbed by an irate person in C-plot, upset about the boot on their car 9-23 1959 Canine incident: Dog vs. Pedestrian- no injuries reported 9-25 0116 Unauthorized sleeping in Community Center 0545 Unauthorized sleeping in Library 9-26 1332 Burning food evacuates D-Dorm 2030 Burning food evacuates U-Dorm 9-27 0043 Malicious pull evacuates A-dorm

Student Governance Opportunities

A number of Disappearing Task Forces (DTF) and Committees are seeking student members. Student input is critical to the functioning of the college and serving on a committee or DTF will provide you with opportunities to influence College policy and learn more about the College. The following groups are seeking student members.

- Infraction Review Committee: These are paid positions on a board which hears appeals of parking tickets. Deadly Force Review Board: This board will review instances when force is used by Police Services officers. Hearing Board Members: This board hears cases when students have been charged with violations of the Student Conduct Code. Narrative Evaluation DTF: This Disappearing Task Force will consider changes in the narrative evaluation process. Enrollment Coordinating Committee: This group helps review and develop approaches for the recruitment and retention of students. Faculty Hiring Subcommittee: These committees are for students interested in interviewing potential faculty. Prevention / Wellness Program: Students interested in supporting this program work to promote wellness in the Evergreen community. Drug and Alcohol Abuse Prevention Advisory Board: This board helps develop policy and reviews abuse prevention efforts. Public Art Advisory Group: This group will assist in the selection of public art for campus. Bookstore Advisory Committee: This group advises the bookstore regarding the selection of merchandise and on bookstore policies. Health and Safety Advisory Committee: This group helps to promote safety on campus. Communicable Disease Advisory Committee: This council provides community education about communicable diseases. Access Services Committee: This committee evaluates Evergreen's progress in insuring that our services and facilities are accessible to students with disabilities. Veterans' Day Event Planning Committee: These people plan Veterans' Day events. Financial Aid Search Committee: These college citizens will help select a new director of financial aid. Communications Board: This group provides guidance on student media issues. Athletics Advisory Board: This group provides guidance regarding intercollegiate athletics. These are the folks who will help to prepare for the addition of men's and women's basketball and tennis. Student Representative for the Board of Trustees: This student serves as a representative for the college's governing board. Student Representative Selection Committee: This group will advertise and help choose a student representative to the Board of Trustees and will develop a process for future selection of student representatives. S&A Budget Committee: This committee allocates funds to support student activities.

Students who are interested in any of these committees or want further information about these involvements should contact the office of the Vice President for Student Affairs at 866-6000 x6296.

WELCOME BACK! FROM THE EVERGREEN STATE COLLEGE BOOKSTORE Hours: Mon-Wed 8:30 to 7:00 Thu 8:30 to 6:00 Fri 8:30 to 5:00 Sat 11:00 to 3:00

Five First-Year and Transfers share views on Evergreen

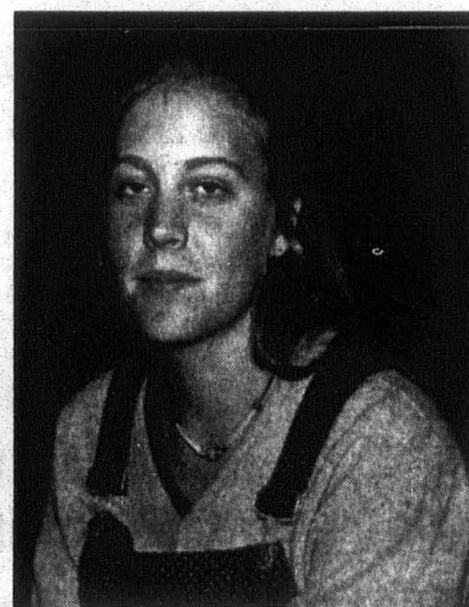
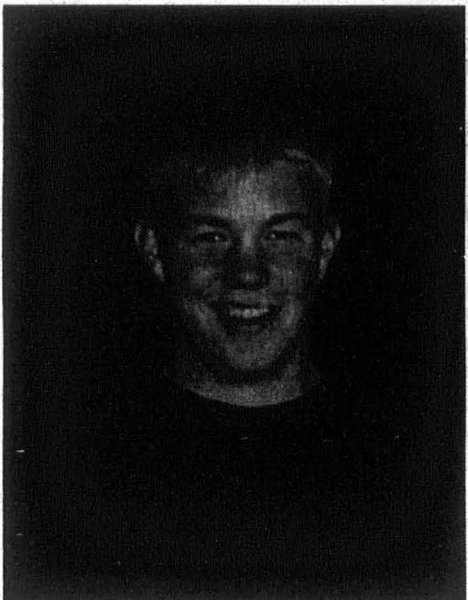
We at the CPJ decided to interview a few new students in hopes of finding out some of their thoughts before their first day of school. So, on the afternoon of Housing's Last Supper, I picked the following five first-year and transfer students. At the end of each quarter we are going to check up with these five students and see how they are doing here at Evergreen - kind of like a non-cheesy *Real World*.

The following four questions were asked:

- What are you expecting from Evergreen?
- What's orientation week been like?
- What do you want to get involved with here?
- What is your understanding of Evergreen?

involved with PIA (Pacific Islander Association), ASIA (Asian Students in Alliance), Evergreen Students for Christ, and First Peoples'.

"Evergreen is a diverse community. I see it as a very integrated school where you can do your own thinking and deciding. Evergreen allows you to do practically anything you want," she said.



Name: Taryn Frame
Program: Masculine and Feminine
Where she's from: Colorado

Taryn's expectations of Evergreen were somewhat let down during the first week. "I needed help getting into classes. I got into my fourth choice and there are no wait lists...Also this week I am learning about myself and going through culture shock," she said.

Her orientation week also wasn't picture perfect. "It's been really chaotic and confusing. I tried to do the Ropes Course, but it was games instead, not exactly what I was looking for, but I had fun. I also had trouble planning with the curriculum development programs," she said.

"I'm not too sure what I want to get involved with yet. I saw that maybe kayaking, crew or something like that will be offered and I might look into that," she said.

Taryn sees Evergreen as a school committed to education in a friendly, laid back atmosphere.



Name: Gilda Houck
Program: Masculine and Feminine
Where she's (most recently) from: Minneapolis, Minnesota

Gilda said that she is not sure what to expect from her first year, but she does know that Evergreen is an alternative school which allows her to learn at her own level.

She had a really good analogy for what her orientation week was like. "It was just like camp. The RA's were like our counselors, the Housing Community Center was like our lodge, the lawns were like our play areas," she said.

Gilda plans to get involved with the Cooper Point Journal doing photography and WashPIRG because she eventually wants to join the peace corps.

Although she was feeling a little nervous during orientation week, Gilda feels that she is getting her money's worth because she is able to use what she is going to learn everyday.

Name: Jonathan Prudhomme
Program: Great Works
Where he's from: Bremerton, Washington

Name: Brendan Kelly
Program: Ecological System in Puget Sound
Where he's from: Vancouver, Washington

Brendan doesn't have a lot of expectations going into Evergreen, but just wants a good education and community.

Brendan got to know the campus during orientation week. "I spent the week walking around and meeting a lot of people," he said.

He is not too sure about what he wants to get involved with at Evergreen. "I may just want to play soccer with friends or get involved with the political aspects of IASO (Irish American Student Organization). Maybe I might just stumble into a group and if it sounds interesting, I might join it" he said.

"At Evergreen it seems like there is one big group. In high school it was a different story, there were little groups but no one really mingled with each other. But over here it is diverse and I don't feel threatened," he said.

Sty tuned.
These faces will appear again in the CPJ.
:)



Name: Lisa Fleming
Program: Cultural Transformations of Modern Japan
Where she's from: Koloa, Hawaii

Lisa is expecting a non-typical education where she is allowed to decide what and where to study. She expects to take advantage of the Study Abroad and Internship opportunities. Lisa is a transfer student from Las Vegas and came to Evergreen seeking a better way of learning and seeking a better curriculum.

She really enjoyed her orientation week. "It's been really meeting lots of people and the week also let me learn about Evergreen's curriculum and to get familiar with the evaluation process. I also went rafting and saw the movie Dreamworld," she said.

Lisa is planning to get involved in Evergreen's Student Activities. "I want to get

WELCOME BACK
T.E.S.C. COMMUNITY
&
CPJ READERS



BURRITO HEAVEN

Located at 2103 West Harrison Ave. in West Olympia. Across the street from Hollywood Video & Value Village

--the **BEST** place for Taqueria-style Mexican food in Thurston County (perhaps the best food period, 'round here), wishes all students, faculty, staff, and CPJ readers a successful, productive, and rewarding school-year.

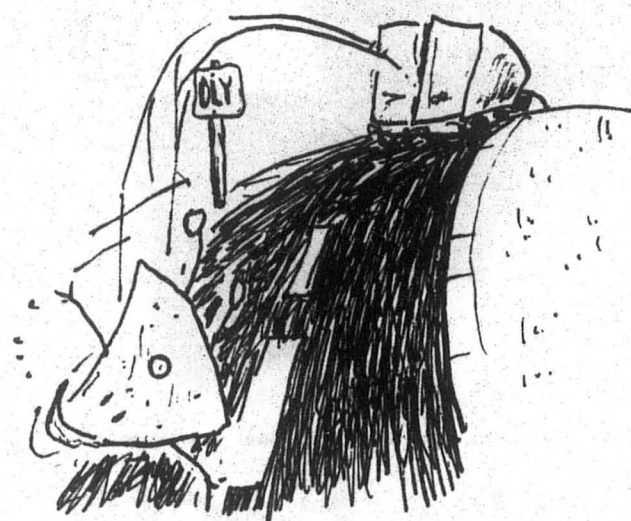
As a "Greener Grad" myself and a member of the local business community, I'm extending a heartfelt invitation to stop into **BURRITO HEAVEN** for a bite to eat and a cold beverage. For those of you new to the area, I know you'll find our place something of an oasis in a desert of mediocrity; and for you who know us already, you'll be pleased with the many improvements to our menu.

There are many more changes and additions to come. Be looking for special deals for students, extended hours during finals week, and (for those of you of legal drinking age - 21 in this state) a "watering hole" on the Westside destined to become a neighborhood landmark.

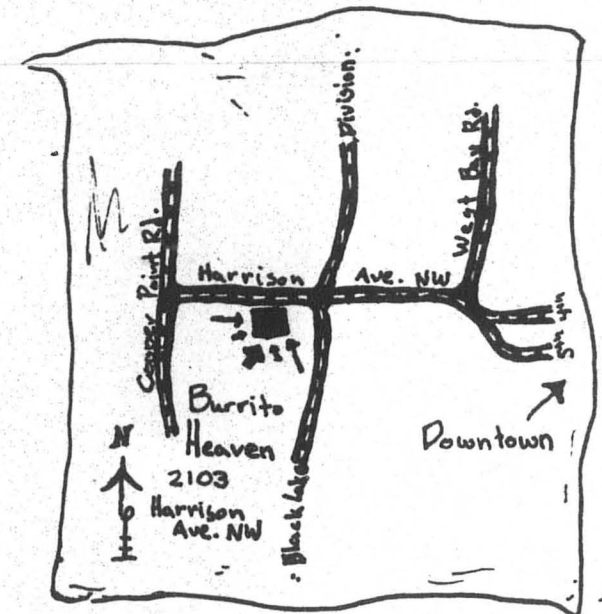
At this time, as you are getting "settled in", let us take care of your hunger. Please accept the \$1.00 OFF coupon below - *I know every little bit helps.*

Again, from Paul & Aida Garcia - Proprietors - and myself, have a splendid year and we hope to see you soon in **BURRITO HEAVEN**.

Ray Nelson - Manager & 1995 T.E.S.C. Graduate

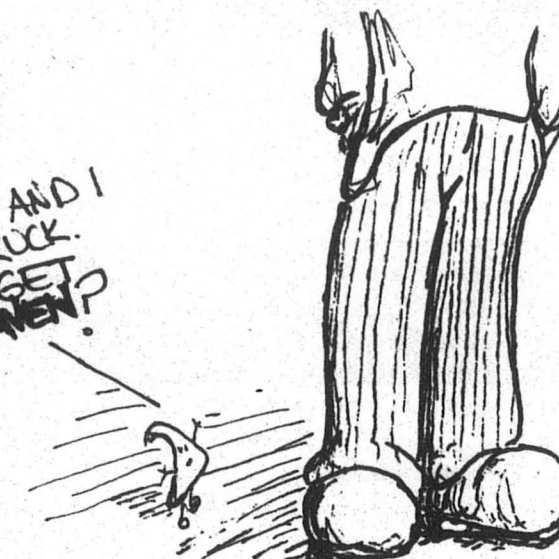


THE ADVENTURES OF CHIP
OF AGE AND READY TO BE DEEP-FRIED, CHIP RIDES THE CHIP-TRUCK ON ITS WAY TO BURRITO HEAVEN. CHIP, WHILE FIDDLING WITH THE DOOR LATCH, IS FLUNG OUT OF THE CHIP-TRUCK!



CHIP ASKS FOR HELP.

HEY MISTER, I'M CHIP AND I FELL OFF THE CHIP-TRUCK. CAN YOU HELP ME GET TO BURRITO HEAVEN?



HAVING VISITED AND ENJOYED BURRITO HEAVEN HIMSELF, THE FRIENDLY MAN CONSTRUCTED AN ELABORATE AND PRECISE MAP. HE HANDED THE MAP TO CHIP, PATTED CHIP ON HIS SOFT, UNCOOKED HEAD, AND WISHED CHIP LUCK ON HIS PILGRIMAGE TO BURRITO HEAVEN.

BURRITO HEAVEN offers to CPJ readers this coupon for

\$1.00 OFF

on your choice (1 item per coupon) of any Large Burrito, Two Taco Plate, Tostada, Regular or Divine Nachos, or Heavenly Quesadilla. Not redeemable with any other offer. Expires 12/31/96.

#1

LEVITY CAFE

430 Legion Way
Olympia 357-7446

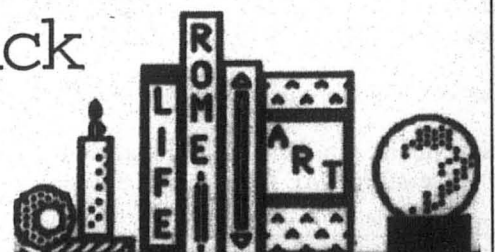
Live music Tuesday evenings

Browsers' Book Shop

Welcome Back

Used & Out of Print Books
107 N. Capitol Way downtown

357-7642
Open Sundays



Games • Maps • • • • •

Grca BOOKS

We're the largest Used Bookstore in town.

Open Daily • Open Late
M-Th til 8 pm • Fri & Sat til 9 pm

509 E. 4th Ave.

BLUE HERON BAKERY
 4435 MUD RAY ROAD
 OLYMPIA, WA 98502
 866-2265



Welcome Back Students! Come visit us soon!

7 AM to 6 PM DAILY

Whole grain baking for the Olympia community since 1977

Just minutes away from TESC

DO YOU PARK AT COOPER'S GLEN?
 Sorry, but we only provide parking for our tenants and their visitors. IF YOU ARE A NON-TENANT USING OUR LOT FOR YOUR PERSONAL PARKING CONVENIENCE, YOU SHOULD TAKE HEED:

- Your vehicle will be impounded at your expense (generally \$100 and up plus storage charges)
- We patrol our parking lot regularly and frequently

• Our lot is not a campground. Please do not sleep in your cars.

THIS IS NOT ENJOYABLE FOR US, BUT WE MUST ENSURE THAT OUR TENANTS HAVE ADEQUATE PARKING AVAILABLE.



COME TO THE EVERGREEN BIKERS



you do the work
 We got THE tools

EVERYONE WELCOME!
 COME GET CREASY-YEAH!
 CAB basement - ext. 6399

The Cooper Point Journal User Guide

Cooper Point Journal Mission Statement:
 The Cooper Point Journal serves the Evergreen community and the greater Thurston/Mason counties by producing a newspaper that aims to reflect the interests of the Evergreen community. The Cooper Point Journal serves the students of Evergreen by offering a laboratory where students can learn about newspaper modus operandi, lingua, culture, creed and perspective; polish communication skills; experiment with ways to effectively communicate in print; supervise staff and operate and manage the financial affairs of a publication. The Cooper Point Journal editors, staff and advisors encourage and support the dissemination of information and opinion/viewpoint which increases multicultural understanding and confronts injustice and discrimination.

General Meetings:
 General meetings to discuss ways to improve the newspaper, brainstorm story ideas and assign stories will be held weekly. Meetings will be held at the Cooper Point Journal office in CAB 316:
 Staff Meetings (open to all) - Mondays at 4:00 p.m.
 Story Meetings - Mondays at 4:30 p.m.
 Stories not assigned at the story meeting can be assigned afterward by making arrangements with an editor.

Office Hours:
 Editors are available to help or answer questions you might have. An editor will be available in the office at these hours:
 Mondays and Tuesdays: 11:00 a.m. - 5:00 p.m.
 Wednesday: 11:00 a.m. - 8:00 p.m.
 Friday: 11:00 a.m. - 3:00 p.m.

How to contribute:
 We can no longer accept submissions without the contributor's full name and a phone number or place where they can be reached. We firmly believe in ensuring community access to our pages. However, we must give priority to submissions that:
 1) meet the appropriate deadline
 2) are timely and relevant to TESC
 3) meet CPJ word limits and size requirements.
 In addition, although we like to give our contributors as much freedom as possible, all submissions are subject to editing.

Sections of the CPJ
 The CPJ consists of several sections. Reading the list of selections will help you get your submission to the right place at the right time. The Letters and Opinions are those which contain mostly opinion and are unsolicited. There are generally three types of submissions printed in this section: forum pieces, response pieces, and editorial cartoons.

Response submissions:
 1) Due Monday at 1 p.m.
 2) 450 words or less
 3) Comments on something published in a previous CPJ

Forum submissions:
 1) Due Monday at 1 p.m.
 2) 600 words or less
 3) Pieces which state or support an opinion.
 However, forum pieces which are in response to the CPJ itself

will usually be printed as response pieces (i.e. with a response word limit)

Editorial cartoons:
 1) Due Monday at 1 p.m.
 2) Published on Response/Forum pages as space allows
 3) Should consult with an editor about cartoon size
 Although Forum, Response and editorial cartoons express individual opinions, they are still subject to rules of good journalism. We will not publish pieces which are factually inaccurate or otherwise violate CPJ policy.

News:
 1) Due Monday at 1 p.m.
 2) Word limits assigned by editors
 3) Talk with an editor or come to a story meeting before writing news

Arts and Entertainment:
 1) Due Monday at 1 p.m.
 2) Word limit assigned by A&E editor
 3) Talk with A&E editor before writing story

Columns:
 1) Due Friday 1 p.m.
 2) 600 to 750 words
 3) Pick up a column application at the CPJ office

Format:
 Bring your submissions in on a 3.12" IBM or Macintosh formatted disk. Please do your writing in Microsoft Word. You must include:
 1) Your name and phone number
 2) The submission file name
 3) A print out of the submission
 Please label your disk and printout. You can pick up your disk at any time after publication.

Accountability:
 The CPJ will not print anonymous submissions or submissions attributed to a false name. We will also not print submissions where we have not verified who the writer is. This rule applies to writing, comics, illustrations, poetry, photos. Everything. If you do not have a phone, please leave a message number or location where we can easily get in touch with you.

Deadlines:
 Submissions that arrive past deadline lose priority. Please follow the deadlines listed above.

Word limits:
 Our publication space is limited. CPJ word limits serve to divide the space among our contributors. Word limits are listed above by section. If your piece is far over word limit, it will lose priority. You will be responsible for shortening your piece and we will help you if we have time.

Story Extensions:
 To be granted an extension, you must:
 1) Talk to an appropriate editor (i.e. the editor of the section in which the story is to appear, the managing editor, or the editor in chief)
 2) Request the extension before deadline
 3) Present a credible reason
 4) Set a new due date and promise to meet it. If you miss the second deadline, we won't run your piece.

Congress shall make no law respecting an establishment of religion, or prohibiting the free exercise thereof; or abridging the freedom of speech, or of the press; or the right of the people peaceably to assemble, and to petition the government for a redress of grievances.

-The First Amendment to the United States Constitution

4) Stay within agreed upon theme

Comics:
 1) Due Friday at 5 p.m.
 2) Pick up Comics size guidelines from Comics editor

See-Page, Literary arts page:
 1) Due Friday at 1 p.m.
 2) Displays writing, art, photos and other creative work

News briefs/Press Releases:
 1) Due Friday at 1 p.m.
 2) Need not be submitted on disk
 3) Will be rewritten by News Briefs editor

Calendar:
 1) Due Friday at 1 p.m.
 2) Need not be submitted on disk
 3) Lists events of upcoming week
 4) Includes date, time, location, and cost of each event
 5) Calendar text will be rewritten by Calendar editor

Graphic Arts, Photos:
 Our illustration and photos are assigned by our Graphic Artist and Photo Editor. To get an assignment, come to a general meeting or give us a call at x6213.

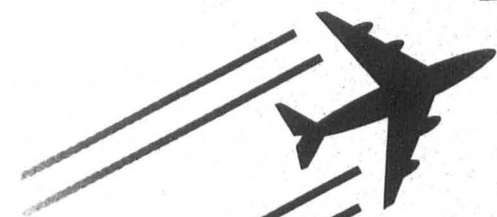
Profanity:
 The CPJ encourages writers to find creative alternatives to the use of profanity.

Malicious intent:
 The CPJ will not publish malicious material. An item is malicious when:
 1) it explicitly threatens violence toward and individual, or
 2) it attacks a person's character rather than ideas or actions, or
 3) it violates the privacy of a community member.

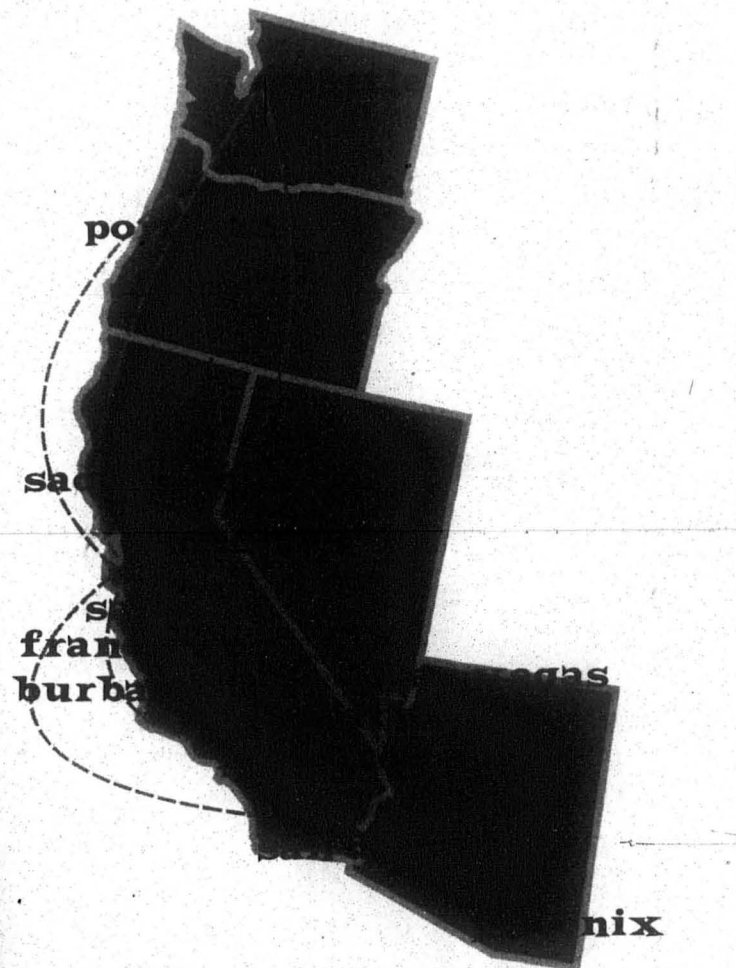
Commercial intent:
 The CPJ will not publish submissions designed for the benefit of the contributor or an organization with which the contributor is affiliated. To speak with an advertising sales representative, please call 866-6000 x6054.

Comments and complaints:
 We exist to serve our reader and contributors. Please let us know right away if you have a comment, suggestion, complaint, or correction. You can speak with an editor by stopping by CAB 316 or by calling 866-6000 x6213. You may also wish to write a response piece voicing your concerns.

Plane Facts from MasterCard



Get up to **7,000*** bonus miles plus **SAVE \$10** when you use your MasterCard® card to fly Shuttle® by United!



Plane Facts from MasterCard

Get up to 7,000* bonus miles plus save \$10 when you use your MasterCard® card to fly Shuttle® by United.

Take \$10 Off When You Buy A Minimum \$75 Roundtrip** On Shuttle® by United. It's fast, it's easy, and you won't have to worry about lost, stolen, or forgotten tickets again. All you need to do is:


1. Have your MasterCard® card ready and call 1-800-SHUTTLE or call your travel professional. Mention promo code SH0016, ask for E-Ticket™, book your flight and redeem your certificate.
2. We'll store your electronic ticket in our ticketing database. Your receipt and itinerary will be mailed to you. If needed sooner, ask at the airport. Should you need to exchange or refund your ticket, you can complete your arrangements by phone (1-800-SHUTTLE).
3. TO RECEIVE YOUR BONUS MILES, simply call 1-800-930-3104 and enroll in Mileage Plus® or register your Mileage Plus Membership number. Your Mileage Plus number must be in your reservation in order to receive your first roundtrip flight bonus.
4. When you check in for your flight, show your drivers license, student photo I.D. and your MasterCard® card you used to purchase your flight.

To make reservations for this offer, call Shuttle by United at 1-800-SHUTTLE or your local travel professional. Please refer the agent to United Airlines' coupon SH0016.

Terms and Conditions:
 Promo Code: SH0016
 Ticket Designator: SH0016
 Valid Carrier: Shuttle by United. No codeshare.
 Valid Routing: Roundtrip travel between any two cities served by Shuttle by United.
 Advance Purchase: Within 24 hours of making reservations, at least 7 days prior to departure.
 Valid Ticket Dates: September 1, 1996 through May 15, 1997.
 EXCEPTIONS: See blackouts. All travel must be completed by 12 am 5/15/97.
 Blackout Dates: 1996: 11/22-11/23, 11/26-11/27, 12/1-12/2, 12/20-12/21, 12/29, 1997: 1/2-1/3, 1/5, 2/13-2/14, 2/20-2/21, 2/23, 3/21-3/23, 3/27-3/28, 3/30-3/31, 4/4-4/13.
 (Or blackouts of the fare purchased, whichever is more restrictive.)
 Allowable Fare Types: All published economy fares (min. \$75 roundtrip). Companion fares not allowed.
 Class of Service: Applicable fare.
 Discount: Available only at time of reservation and is only valid on up to two paid fares purchased together for travel on same flight, date and class of service.
 Minimum/Maximum Stay: Saturday night stay required.
 Mileage Plus Accrual: Yes.
 Ticketing: E-Ticketing only (electronic ticketing service).
 Taxes/Service Charges: All fees and/or surcharges, including Passenger Facility Charges, are the responsibility of the passenger and will not be considered for minimum fare requirements. Charges must be paid at time of ticketing.

Certificate Restrictions: Accept original certificate only. Non-extensible, non-combinable with any other coupon, certificate, discount, bonus upgrade, Mileage Plus award, promotional offers or tickets for group travel. Not replaceable if lost or stolen. No cash value may not be sold or bartered. Protection for flight irregularities will be on Shuttle by United flights only. Discount applies to new purchases only. Only one certificate per passenger.
Ticketing Restrictions: Based on the restrictions of the fare purchased (except as noted in these terms and conditions).
Refund: Refund of a refundable ticket using this certificate will be the amount actually paid by the passenger less the fare amount for transportation used and less any applicable penalty. Certificate will be forfeited.
Changes: In origin or destination is not permitted. Date changes are allowed upon payment of a \$50 per ticket fee.
Stopovers: Not permitted.
 *Receive 5,000 bonus miles on the first roundtrip you take on United/United Express/Shuttle by United through 5/15/97 using this offer, plus an additional 2,000 bonus miles when you enroll as a new member in Mileage Plus® during this promotion. Valid only on first roundtrip through May 15, 1997.
 **Must be issued using E-Ticket™ electronic ticketing service for a roundtrip fare of \$75 or more. Travel must be completed by May 15, 1997.
 ©1996 MasterCard International Incorporated

Ticketing Instructions:
 TIC/TM Designator: SH0016
 UAL/ATO/CTO, see S*PMA/SH0016
 Agencies, see S*PMA/SH0016 Treat as type "A" certificate



Jervis assesses personal performance:

Excerpts from TESC President Jane Jervis's self evaluation

INTRODUCTION

This summer I completed my first term as president of Evergreen. In the past four years (Can it be that long?) I have learned and grown in many areas, including:

- understanding and respecting the wisdom of the collaborative process;
- appreciating the talent, energy, and wisdom of others;
- understanding the public political process, and improving my ability to interact with it;
- developing confidence in my own judgement and capability;
- appreciating the magnitude of the task we face in the years ahead.

ACADEMICS:

The Long-Range Curriculum dtf completed its work this year with overwhelming faculty support; implementation was already under way. Two spin-off dtfs, Advising and Long-Term Hiring Priorities also did major work this year. Major changes have resulted in the reorganization of curricular planning and the restructuring of the freshman year. We continue to place renewed emphasis on part-time studies, doubling our offerings and strengthening student support services. Summer school enrollment was up substantially.

I would like to single out for particular notice the remarkable multi-year institution-wide effort undertaken by Academics and Student Affairs to assess and remedy a drop in freshman retention. There is a lot of talk about assessment in the education community these days, without a very rich understanding of what it is and how it should be used. We have done a sharply focused assessment of a particular educational issue, analyzing it from multiple points of view, integrating this effort with the curricular review that was progressing simultaneously, using the results to try particular remedies, and assessing the results of the modifications to further fine-tune those remedies. Retention is up. Fundamental changes have been made in the structure of the core curriculum. We have created a model process. Once again we have something to teach the education community.

The opening of the Longhouse last fall coincided with the inauguration of the Evans chair, which allowed us to bring six Native American scholars, artists, and community activists to campus to participate in academic programs throughout the year. In collaboration with the South Puget Intertribal Planning Agency, we received a substantial grant from the Northwest Area Foundation to support the development and marketing of native arts. In its first year, the Longhouse has richly filled its promise of enriching the Evergreen community and supporting our outreach to the native people of the region.

Faculty hiring and development continued to be a focus of attention for Academics. Faculty continue to be successful in attracting funds for sponsored research, and more than one hundred faculty members attended workshops held during the summer. We face special challenges as we lose increasing numbers of faculty members to retirement, and some to death. This is an opportunity for reminiscence, for grieving, for celebration of remarkable contributions, and for renewal.

STUDENT AFFAIRS:

A number of changes were instituted during this year in an effort to improve services to students in financial aid, in registration and records, in the college recreation center, for the evening and weekend program, and in career development. With a new director, housing restructured many of its services and is developing an expanded residential life program. A new campus challenge course was opened, and a refurbished recreation pavilion reopened to serve the campus and Olympia communities.

Student Affairs sponsored a number of educational programs in support of diversity on campus, with some special emphasis given to policies and services for students with disabilities, and training for members of the community who work with these students. A new sexual assault prevention week was implemented. The health center started a peer health education group, and S&A funded a peer group wellness program.

PUBLIC SAFETY:

The resignation of the director of public safety in the spring of 1995 prompted a review of the department and resulted in a recommendation by the interim director that we should arm public safety officers. This led to an extended period of campus-wide discussion, consultation, and controversy. At its meeting in mid-February, the Board of Trustees accepted my recommendation that we accept responsibility for the safety of the campus and move toward limited arming of our public safety officers. A dtf working in the spring term recommended the conditions of limited arming, which I accepted. We are still in the process of implementing those recommendations, with a new director and a new reporting relationship for the office within Student Affairs.

This issue deeply divided the campus, with passionately held views expressed on both sides, civilly for the most part. The debate revealed our deepest fears and our highest hopes about the kind of community we have and want to have.

CONCLUSION

This has been a good year, a year in which we worked well together, disagreed passionately without being too disagreeable, faced loss together, and celebrated gains. As we prepare to celebrate the first twenty five years of teaching and learning at Evergreen, and to look forward to the next quarter-century in a new century, I think we have much to be proud of.

As the call goes out from politicians and pundits to reinvent, restructure, or reengineer higher education, we celebrate the wisdom and far-sightedness of the people who, a quarter-century ago, reinvented higher education by creating Evergreen. We have proven that restructuring works — producing students, faculty, and staff who know how to work collaboratively, to understand the connections between things, to get things done, to be engaged in their communities. We have seen the energy that results from the consonance of theory and practice. And we know what good people, working well together can achieve.

Students can respond

Students are invited to respond to Jervis' self evaluation, either to the President herself or to the Board of Trustees. Responses can be sent or brought to the President's office (Library 3109), or emailed to Jervis at <jervisj@elwha.evergreen.edu> or the Board at <eval_pres@elwha.evergreen.edu>. All responses must be received by Tuesday, October 8 at 8 a.m.

President's sets goals for 1996-97:

TESC President Jane Jervis sets vision for school year

Goals for 1996-97: As we celebrate 25 years of making a difference in teaching and learning, we continue to face the challenge of finding ways to remain vital as an institution in an environment of shrinking resources and increasing demand for services. The goals presented below represent some things I can do myself; some indicate support for work that is already in process; and some are intended to begin or continue conversations among members of the community without whose support and effort nothing will be achieved. I can only articulate the goals — the realization of those goals belongs to all of us.

My overall goal is to help Evergreen fulfill its fundamental mission, "to assist students in learning how to learn and how to continue developing their skills in a world of increasing diversity, interdependence, and moral complexity." (Role and Mission Statement for TESC, 1989)

friends of the college, and community leaders

- work with college advancement staff, the Foundation, Friends of the Library, and others to strengthen our base for private fundraising to supplement state funds in support of Evergreen programs and students;
- be alert to ways in which Evergreen can be of service to the region and the state.

Focus - Campus Climate:

Improve the campus climate for all people and work to make real the ideals of the Social Contract; help Evergreen strengthen its sense of community, of working in a voluntary, collaborative association with the common purpose of learning together, and of responsibility to provide the best possible service to students and the public; expand and strengthen our commitment to pluralism of people, of cultures, and of ideas.

For 1996-97:

- celebrate the twenty-fifth anniversary of teaching and learning at Evergreen;
- set an example of integrity, civility, and

respect in my interactions with all members of the community;

- engage the community in discussions about financial aid policy and its effects on the composition and support of our student body;
- continue institutional attention to hiring for diversity, and participate in state-wide conversations about affirmative action;
- sponsor and participate in training on diversity;
- use public occasions to reaffirm the central importance of civility and mutual respect in all our relationships;
- distribute Social Contract annually to all employees and students;
- encourage community celebration and appreciation for the work of all people in the Evergreen community.

Focus — Governance:

Improve internal governance structures and practices, so that our ideal of collaborative governance is more fully realized; support

development of strong faculty and student governance structures; identify and rectify gaps and internal contradictions in Evergreen's governance documents.

For 1996-97:

- participate in the revision and update of the campus master plan;
- support the study of space allocation and the development of strategies to use our space with sensitivity to our mission as well as to efficiency;
- pay particular attention to clear and frequent communication with all constituencies;
- make evaluation of internal communication and collaboration part of the evaluation criteria for both the president and the vice presidents;
- continue targeted program reviews of administrative departments to improve effectiveness and service;
- continue review and revision of written policies and procedures for clarity, consistency, and equity;
- respond to opportunities for administrative restructuring, for enhanced effectiveness and cost-savings.

Focus — Innovation:

Re-commit Evergreen as a center of innovation in undergraduate teaching and learning; invigorate the learning community and support a learning environment that sustains students, faculty, and staff; make feedback from assessment an active part of academic and institutional planning; strengthen ties between student affairs and academics; create structures that support vital careers for faculty and staff.

For 1996-97:

- support planning for the protection and wise use of our 1000-acre campus;
- take part in preparation for our major accreditation self-study, using it to focus on the role of assessment in strengthening teaching and learning;
- seek innovative ways to respond to the state's growing need for access to higher education;
- support implementation of innovative ways to support student learning;
- support the Academic Advising DTF as it seeks new ways to connect students to the curriculum and to the learning process;
- seek ways to support professional development for faculty and staff;
- establish and raise money for the Evergreen Fund for Innovation, a birthday gift to the college, to support creation and development of innovative approaches to teaching and learning and the delivery of support services.

Focus — Turning Outward:

Develop ties between Evergreen and the larger community; build legislative and financial support for the college; reach out to the wider community to further enrich Evergreen intellectually and culturally.

For 1996-97:

- work with the legislature, to inform legislators of Evergreen's unique contributions to higher education, and to build support for the college;
- work with other institutions of public higher education in Washington and with state agencies, to develop and promote sound educational policy, and to find productive ways of working together in support of the state's students;
- support Evergreen's participation in state and national educational reform, both in K-12 and in higher education, as an outlet for applied research in teaching and learning;
- enhance support among alumni,

Lowering The Cost Of Higher Education... Every Day

Office DEPOT®

Come to Office Depot for guaranteed low prices on:

- Computers & Accessories
- Software
- School Supplies
- Printers, Fax Machines, Calculators and Other Business Machines
- Furniture

Plus, check out the in-store Business Center for all your printing and copying needs

Call 1-800-557-3376 for the store nearest you

TESC favors individuals despite community rhetoric

•Commentary
BY CRAIG ST. CLAIR

In my two years here I have heard a great deal about community, especially "building community," nearly to the point where it becomes cliché. No doubt the reader has encountered the "c" word in his or her wanderings here as well. But the notions of community that Evergreen promotes have always seemed shallow. Only recently have I come to some conclusions as to why this is, and why a meaningful "sense of community" does not exist on this campus as a whole.

What is community to Evergreen? Community seems to be little more than people living, working, and generally, interacting proximal to one another. This is undoubtedly a definition of community, but it seems to lack anything meaningful to human existence. It is worthwhile to note as well that this definition of community is the one generally encountered in social science dictionaries and thus a relatively recent conception of community.

This conception of community is largely an illusion. Really this talk of community is not much more than the promotion of self interest and the alliance of those with like interests, whatever they may be. This promotion of self interest is reflected in the various cultural indices on campus, such as the curriculum, the Social Contract, and Housing.

These institutions have a primary influence on the actions and attitudes of the community and reflect the college's promotion of individualism.

Evergreen's curriculum is unarguably individually oriented. Upon opening the course catalog to the page describing the foundations of the curriculum it claims it is student-centered. It goes on to describe how teaching comes first at Evergreen. This, while true in part, translates in real life to mean the student is King, and faculty are merely there to make suggestions at the very most. The evaluation process has the student writing his own grades as the primary means for others to understand his or her work, with the faculty evaluation as merely an addition to student comments. I was able to pull out of a class three weeks into a quarter last year with a petition. Later I reflected that while I removed myself from an unproductive situation, I also intruded on another class that had already formed a rapport in seminar, which it would have to rebuild upon my admission. I also disrupted whatever rapport my old seminar had as well. My concern here though is not to put the curriculum and its policies on trial, but only to point out its individualistic nature.

The Social Contract is the nearest thing to a governing document Evergreen possesses. It is basically a statement of one's individual

rights, with responsibilities, that one is entitled to as a member of the community. Though the document laudably places the protection of others' rights and personal responsibility above individual freedoms, the essence of the document conveys that we all have the right to do what ever we want, so long as we don't interfere with others' individuality. Thus, its highest aim is to protect everyone's right of self promotion. Such a pervasive selfism makes meaningful community very difficult.

The way in which Housing is situated on campus reflects Evergreen's ideal of individuality. Much of the housing offered to students gives the option of having a bedroom to one's self. While all such units do have a common living area, it is easy to shun the use of this area and avoid contact with other roommates. In addition, nearly half of the housing mentioned above is configured like conventional apartments, without traditional dorm-style hallways that make meeting people and associating with one's neighbors much more natural. The way in which Housing deals with policy and conduct issues favors the individual over set community standards, in many instances, in favor of one's personal growth.

I do not want my above arguments to sound as if Evergreen makes no effort at promoting community. I am merely suggesting that it takes a back burner to the

promotion of the individual self, which is what Evergreen values most. Nor do I mean the above to sound as I am against self expression, it has its place within bounds of the laws and mores of a strong, genuine community.

So, what are my own notions of community? First and foremost, community is a place where humans do not think themselves their own Maker. There is a reality beyond their total comprehension that provides a source of love, guidance, and relationship. Second, through this a sense of commonness and purpose animate the community to serve the needs others as well as to fulfill their own callings. All of this is done with the sentiment that the wheel is not a new invention of the current generation and that it is best not to invent it all over again. These are just several marks of a genuine community, to list more would lead this discussion to far astray.

The conception of community most prevalent is a good starting point, but it falls short of fostering a meaningful existence. There is more to community than proximity and individual rights, which Evergreen favors at the expense of a healthy community. Community and individuality cannot be valued equally, one will always take precedent. Evergreen chooses individuality and self-expression. How else can one explain why we seem to always be "building community," instead of enjoying it.

Reader responds to review, questions CPJ editorial policies

Editor's note: The following letter is a response to a review of the Stage, Staging, Stages production of Shakespeare's King Lear that appeared in the June 6, 1996 issue of the CPJ. To obtain a copy of this or any other issue, stop by the CPJ office in CAB 316.

To the editor and staff at the Cooper Point Journal,

My apologies for the lateness of this letter, but June's final issue left little time for a response.

I am writing because of the before mentioned issue's article "The ups and downs

of King Lear" by Ms. Hillary Rossi. As a Shakespeare enthusiast as well as a cast member of the spring production, I found the article insulting, degrading and an overall shoddy piece of journalism.

The majority of the article was nothing more than Ms. Rossi's biased complaints about Shakespeare himself, whom she obviously detests. She states early on: "However, it wasn't a great evening at the theater. Unless you like Shakespeare."

To cite a euphemism: Duh!
Ms. Rossi not only seems unfamiliar with Shakespeare, but seemed as if she'd never actually seen a live performance before. She wrote: "All the 'thou arts' and 'comehithers' in

the story... can get to a person. If you can't understand Shakespeare's speech, then it will be very hard to follow the script." I was almost shocked to not find a *Clueless*-esque "Like, omigod!" at the end of every paragraph.

The most in-depth Ms. Rossi cared to comment on the actual performance was "My favorite scene was the choreographed sword fight near the ending of the play." The rest of the article was filled with half-assed criticisms about Shakespearean sexism and why it was "astounding" when a female character killed a male character. I'm sorry, Ms. Rossi, but calling Shakespeare a sexist is like calling the invention of wheel unimportant—it may seem primitive today, but in its own time it was a

radical improvement.

Adding insult to injury were common-sense no's-like stating outright exactly how many people were in the audience on the opening night and ending by saying "...you can attend because it is free, if nothing else."

I realize that it was the last issue of the school year, and that the article was written on short notice, but that is no excuse for this sort of deficient journalism. I would suggest the CPJ re-evaluate its editorial procedure and performance. It would appear lacking in some cases.

—Josh Knisely, student

This is not an ad.
Ads are not allowed on the Letter page.
Why?
Because we want to hear what you've got to say.
Letters are due Mondays at 1 p.m.

An evening of Chinese opera coming to Olympia



photo by Gary Love

This group of Evergreen students will perform elaborate dance and acrobatic routines in Saturday's performance. The show is at 7:30pm at the Washington Center for the Performing Arts in downtown Olympia. Tickets are \$16, \$13 for seniors and students. Advance tickets can be purchased at Rainy Day Records, Yenny Music, or the Washington Center box office. Call (360) 753-8586 for more information.

BY JENNIFER KOOGLER
On Saturday, October 5 at 7:30 pm there will be a performance of three different Chinese operas at the Washington Center for

Theatrical mix of music and movement is the culmination of work by professional Chinese opera actors and Evergreen community members.

Rose Jang, Evergreen faculty member and co-director of the event, has always wanted to put on some kind of Chinese opera performance in Olympia. While in China last year, she met Chen Cao, a professional opera actor and artistic director of the performance, and immediately knew she wanted him to work with herself and students. She urged Evergreen to hire Cao as an artist-in-residence. Last spring quarter the two trained students while working on a production of Shakespeare's King Lear, which incorporated elements of Chinese theater into the traditional play.

The performance will include three traditional stories from Chinese legend. The first, *The White Snake*, tells the tale of a snake woman who reveals her true form to her husband and ends up killing him from shock. In order to bring her beloved back to life, she must treat him with a special herb, which can

only be obtained through a journey fraught with conflict.

The Monkey King is the story of a sly, clever monkey who sneaks into the birthday party of the emperor and consumes many sacred goods. This caused much trouble between himself and the gods and other celestial warriors.

Because the students involved in the project (Laura Johnson, Marta Van Patten, Amy Cao, Christina Cato, Mara West, Susan Glover, Mason McGraw, Matt Powers, and Josh Harvey) are not able to sing the parts of the opera, these two stories will be conveyed primarily through elaborate music, costumes, and exuberant movements including tumbling, dancing and fighting. These students have worked through most of last year and over the summer to strengthen their techniques.

Unlike conventional Western operas that emphasize vocals, Chinese opera incorporates theatrics, acrobatics, costumes, and makeup into the story. Thus, the premise can still be understood even if the audience doesn't speak Chinese. Jang is particularly excited about this fact, because it shows that "world theater can really work," transcending language barriers to convey a message to the audience.

The headline piece, *The Woman General*, will be what Jang calls "a full taste

of Chinese opera", complete with singing performed by professional Chinese actors from around the Northwest. The story revolves around a retired woman warrior, Mu Kuei-Ying, who returns to her military post after a long rural seclusion with her family to defend her country from invasion. According to Jang, this piece is particularly famous for spotlighting the skills of female performers. While this part of the performance will be in Chinese, there will be subtitles in English.

The part of the *Woman General* will be played by actress Margaret Li. Li, a graduate of the Chinese Opera School in Beijing, was

Shen, who will conduct the orchestra by beating out percussion rhythms on two drum sticks.

Sponsors of the event include the Chinese Arts and Music Association, the Olympia Area Chinese Fellowship, the South Puget Sound Chinese American Club, and the Seniors' Research Group of Chinese Opera and Music.

Tickets for the event are \$16 for general admission, \$13 for students (with a valid ID) and seniors, with a group rate of \$10 per ticket for groups of 20 or more individuals. You can buy your tickets at the



Margaret Li, a graduate of the Chinese Opera School in Beijing, plays the title role in *The Woman General*. Photo courtesy of the Office of College Relations

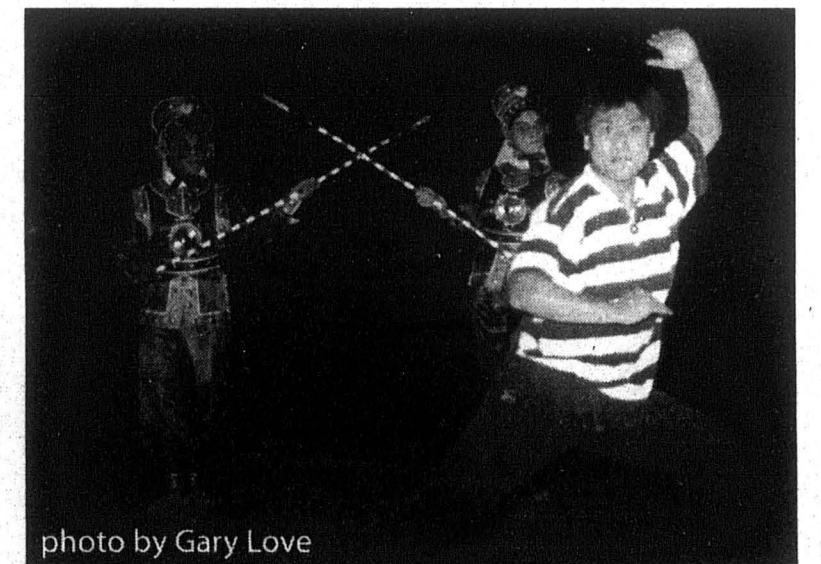


photo by Gary Love

Chen Cao, artist-in-residence at Evergreen and the artistic director of the performance, practices one of the fighting moves with the students.

considered one of the top performers in China before retiring to come to the United States. She now lives in Portland.

Other professionals working on the performance include prominent Northwest musician Warren Chang and Professor David

Washington Center for the Performing Arts Box Office downtown, Rainy Day Records, Yenny Music, or the Bookmark. Call the box office at 753-8586 for more ticket information.

Two spins of R.E.M.'s New Adventures in Hi-Fi

Take One:

by Jennifer Koogler
About two years ago, R.E.M. set out on a world-wide tour in support of their orange-tinted, harder rocking album *Monster*. While they tramped around the globe, drummer Bill Berry suffered two brain aneurysms, bassist Mike Mills stomach turned, singer Michael Stipe showed off his strategically placed hernia operation scar, and guitarist Peter Buck watched his every move carefully. Aside from these various ailments, R.E.M. walked away from their journey with the makings of their latest adventure, *New Adventures in Hi-Fi*. Much like the concert, *Hi-Fi* is a sampler of the quiet and the chaotic that make up the R.E.M. sound.



The fourteen song jaunt is paced a lot like the Burning Mine ride at Dollywood's theme park, aptly named Dollywood. For those of you not lucky enough to have a relative who lives 30 miles away from Pigeon Forge, Tennessee like I do, I'll explain. The ride is similar to Disneyworld's "Pirates of the Caribbean" ride, except passengers are carted around in trains, not boats. Your "car" jerks around corners, then smooths out to allow you a glimpse of some audio-animatronic fire fighters saving women and cats and stuff, then jerks you again, only to end with a plunge roller coaster style, leaving passengers shrieking and breathlessly tumbling out of their seats.

While *Hi-Fi* will not leave you shrieking and breathless (see *Life's Rich Pageant* and *Automatic for the People*), *Hi-Fi* does deliver smoother sounds with some unexpected turns and squeaks. Softer sounds, like "New Test Leper" and "Be Mine" sound plucked directly from the *Out of Time* sessions, while the driving "The Wake-Up Bomb" and "Leave" are prone to sound a lot like *Monster*. It's as if being on tour made them review their catalog of songs and extract elements from what they've done before to make a new album. While that sounds pretty bad, recycled R.E.M. is better than a lot of new bands' (see No Doubt) material any day.

The only down side to this is that they didn't go back far enough. There isn't a "Radio Free Europe" or a "Gardening at Night" on this album, not that we should expect that. Many songs, like "Be Mine" and "How the West Was Won and Where it Got Us" are quite Reckoningesque. Buck and Mills did bring back a few of the jingle-jangle sounds that made R.E.M. famous. That's enough to satisfy me.

Lyrical, the album is quintessential Stipe, but rarely do they reach out into your heart and strum a few strings. I think that they can best be summed up by the chorus of "Bittersweet Me", where Stipe croons straightforwardly, "I don't know what I'm hungry for, I don't know what I want anymore." Confusion, randomness, strange

imagery, and a little bit of love and lust thrown in for effect. Much of the same kind of R.E.M. stuff.

I would like to take this opportunity to highlight the gem on *Hi-Fi*, namely "E-Bow the Letter" featuring a slow, winding, longing strings buzz and guest vocals by the much-admired Patti Smith. Not only do I love this song because of its rocking (like a baby, not like rock and roll) and Stipe's soothing voice that sounds like he wants to be a teenage film star with an foil tiara (much like the fourteen year old I was), I also love it because it saved my sanity. Over the summer, I worked in a music store that, which for some higher management reason I'll never quite understand, forced us to listen to single CDs all day long. That means I was exposed to the same five songs for eight hours straight. OK, when the single was released on September 3, I immediately tore one open, raced to the CD player plunked it in, and spent the rest of the day waltzing in a halcyon haze. Refreshing, really.

R.E.M. is my favorite band, hands down. Each album holds a place in my mind and are called upon (some more than others) at various times to soothe or jump start my soul. *New Adventures in Hi-Fi* will, in time, hold one of these places. Because it sounds so much like a combination of their earlier work, it's probably inevitable that I will grow to adore it. But for right now, it merely floats upon the surface of my brain with a beautiful reflection, waiting to drown.

Take Two:

by Bill English
If I could wipe my ass with a compact disc, this would be the first one I look for. I have found R.E.M.'s *NEW ADVENTURES IN HI-FI* to be an even bigger disappointment than Sebadoh's *Harmacy*. Michael Stipe's once insightful lyrics have become typical and bland, leaving me wishing for the days when they were largely unintelligible. At least then I could pretend they were good. Guest musicians Scott McCaughey, Nathan December and Andy Carlson fail in their goal to act as a catalyst in songs reeking of predictable chords and rhythms set by Berry, Buck and Mills. There are few if any breaks in all the songs, most of which are over five minutes long. I really wish I could say something positive about this album. I love R.E.M. and wanted so badly to like this album. I just can't do it though. I guess I could say there are some nice pictures in the liner notes, but nothing worth buying the disc for. I'm sorry R.E.M. Don't hate me.

this space for coloring provided by the cpj

submit to the cpj

Dave Matthews Band

November 7 • 7pm
Key Arena
Tickets on sale Sat Oct 5 • 10am

Charge by phone at (206) 628-0888

PRODUCED BY MCA CONCERTS Internet: <http://mcaconcerts.com> / E-Mail: mca@isomedia.com

A&E Quote of the Week:

"The 'booty shake' is the most important part of the Macarena. Everything else is just filler." --Interim Photo Editor Gary Love

Do you have an A&E Quote of the Week? If so, please submit the tidbit to the CPJ office in CAB 316. Be sure to give us your name, your phone number, and the source of the hilarious and/or insightful piece of knowledge.



This page is simply special



Claira Voyant's Cosmostology

Cosmically channelled through the causeways of chaos by Carmine Rau

Aries

Assault essays early to avoid accusations of apocryphal work and late night runs to the apothecary. Lucky color - chrome light green.

Taurus

Reward last week's attention to tertiary matters with a Turkish bath. Don't be alarmed by tumescence. It will pass by mid month. Lucky color - veridian.

Gemini

Mastery of gastronomy makes for new circle of friends. Possibility of gazpacho in your future. Lucky color - vermilion

Cancer

Make time to confabulate with conferrer to exchange condign compliments. Lucky color - phthalocyanine blue.

Leo

Experimental ligature leads to fun Fall frolic. Have Mom sign permission slip first to avoid litigation. Lucky color - carmine red.

Virgo

Vivify social gathering with vivacious vitality. Lucky color - cerulean blue.

Libra

Beneath your lamina of calm lies an inner child lambasting in itself. Don't languish. You'll soon be lauded a loquacious friend. Lucky color - raw umber.

Scorpio

Avoid the slippery scarp of saccharin addiction. My sources indicate that self help is available through simple seance. Lucky color - burnt umber.

Sagittarius

This month, Sagittarius is synonymous with sylph. Take advantage of superhuman powers by through superfluous displays of friendship. Lucky color - raw sienna.

Capricorn

Cubist inclinations produce cuneiform masterpiece. Don't think it coincidence. Transmission from another planet is inspiring clay curio cryptogram. Lucky color - burnt sienna.

Aquarius

Astrakahn jacket is a wise fashion purchase this month. Prepare now for inclement weather to assure ardent spirits on Halloween. Lucky color - deep cadmium.

Pisces

Posthumous self discoveries will not help you in the present. Resolve inner issues before commencement of pluvial season. Lucky color - terracotta.

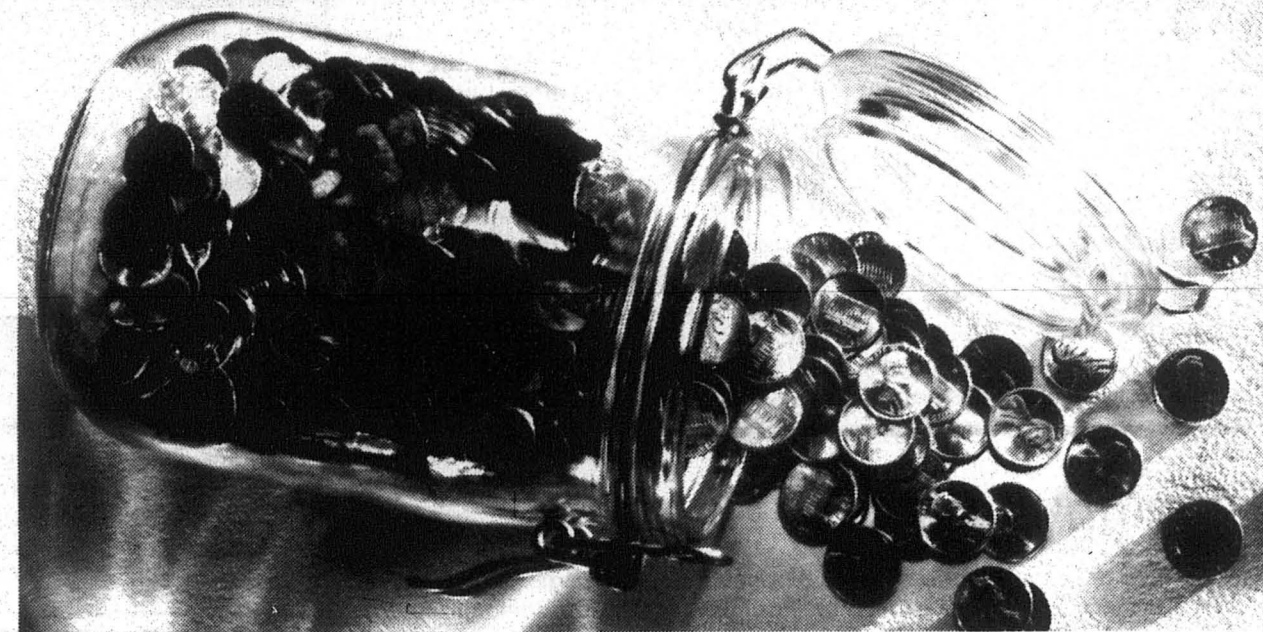


Stephen King Andy Warhol Anthony Hopkins Vanilla Ice

These people are at the top of their fields
Everyday, they and millions of other gifted artists set forth their words, voices, and pictures to the world.
How would anyone know about their achievements if you didn't write for the CPJ?

The CPJ is looking for writers for the Arts and Entertainment section of the paper to report on the entertainment buzz in Olympia and beyond. Whatever medium tickles your fancy is fodder for an article. Just come on up to the CPJ in CAB 316 Mondays at 4:30 pm for a story meeting.

PRINCIPLES of SOUND RETIREMENT INVESTING



EVERYONE WILL GIVE YOU THEIR TWO CENTS WORTH, BUT WILL THAT BE ENOUGH TO RETIRE ON?

Today there seems to be an investment expert or financial advisor almost everywhere you turn. But just how qualified are all these experts?

Peace of mind about your future comes from solid planning. From investments and services designed and managed with your needs and retirement security specifically in mind. The kind of investments and services TIAA-CREF has been providing for more than 75 years.

WE'LL HELP YOU BUILD A REWARDING RETIREMENT.

Our counselors are trained retirement professionals who have only you and your future in mind. So you're treated as the unique person you are, with special needs and concerns about retirement. And that makes for an understanding, comfortable relationship.

With TIAA-CREF, you have plenty of choice and flexibility in building your retirement nest-egg — from TIAA's guaranteed traditional annuity to the investment opportunities of CREF's seven variable annuity accounts.



Ensuring the future for those who shape it.™

* Standard & Poor's Insurance Rating Analysis, 1995; Lipper Analytical Services, Inc., Lipper-Directors' Analytical Data, 1995 (Quarterly). CREF certificates are distributed by TIAA-CREF Individual & Institutional Services.

Women's soccer wins first game

By JASON BAUMGARDT

The Lady Geoducks captured their first league victory Sunday by defeating Central Washington University 3-2.

Things didn't look promising from the start as Central dominated play. The Geoducks turned play around and were able to get on the board first. Camille Morgan was credited with an assist to Amy Sprague who took Camilles long diagonal ball one on one with Central keeper and put it in the back of the net at the 15:48 mark in the first half.

No longer than 4 minutes later Morgan got her second assist on a 25 yard strike from Jean Teather Her shot ended up in the upper right corner and froze the Wildcat goalkeeper solid.

With the half closing and a 2-0 lead the

Lady Geoducks had complete control. During second half action Central closed the gap to one, with just three and a half minutes gone by. The Wildcats kept control and domination up as they knotted things up 2-2 six minutes later.

TESC didn't give up as they picked up play once again. Evergreen's work paid off as Camille Morgan was able to score the winning goal after beating three players and hitting a low drive into the corner from 20 yards out to seal the deal.

The Geoducks outshot Central 20-16. Goalkeeper Erika Brehm was credited with 10 saves.

TESC is currently 4-5-2 overall, and 1-4 in conference play. Evergreen's next match is October 4 on field #4 against Albertson at 4:00.

Men's soccer wins two, loses third

By JASON BAUMGARDT

TESC men's soccer team two game win streak was snapped Sunday with a 1-0 defeat from Central Washington University in a non-league match.

Central's goal came in the first half on a tough shot. Goalkeeper Jose Rojo was there but couldn't hang on to it.

Coach Wedge commented, "This was our worst performance on the year."

The Geoducks outshot Central 10-5 but couldn't find the back of the net. Besides the one goal the defense played strong. Late in the second half Evergreen looked as if they were going to tie the match on a scramble in front of the net.

The Geoducks had three shots in the scramble, two of which were blocked by Central defenders. The third shot, by James Frost, was saved on a beautiful dive and deflection out of bounds by the Wildcats goalkeeper. Evergreen's record is now 4-4-1 overall and 0-1 in league play. You can catch Geoducks mens soccer again on Wednesday Oct. 2 against league rival Seattle University.

Play begins on field #3 at 4:00.

Previously, the men's soccer team won their second straight decision by beating Northwest College in a non-league match 5-1.

The Geoducks outshot Northwest College 20-1. Mike Goebel started things off early with an assist from Adam Fenster. TESC dominated the entirety of the first half allowing 0 shots. Goebel added two more goals before the half making it 3-0 in favor of the Geoducks.

Collin Rogerson was credited with assists on Mike's other two goals.

During the second half Evergreen kept dominating and added two more goals. Mike Goebel scored his fourth goal and Adam Fenster capped off the scoring drive making the score 5-1. James Frost and Dave Zumwalt were both credited with assists.

Coach Wedge said, "This was a fun game because it allowed me to get everyone some playing time." Wedge also commented, "This was a good team effort with flashes of great play."

The Geoducks are now 4-3-1 overall and 0-1 in conference play.

WashPIRG is ready for action

By Cameron Green

WashPIRG is looking for people who are tired with attacks on environmental laws and fed up with politicians being bought out by special interests. This year, WashPIRG is attacking Washington's politicians and the corporations that are spending millions of dollars to get our environmental protections, head-on. They are tired of seeing big business buy their way out of environmental regulations, and lobbyists writing key environmental legislation, like the Clean Water Act and the infamous Clear-cut Rider.

One of WashPIRG's key campaigns this year is Students Against Political Corruption, in which students will be working to restore democracy and get big money out of politics. Students here at Evergreen will be pressuring the self-proclaimed "queen" of campaign finance reform, and everyone's hero on the environment, Linda Smith, as well as her opponent, Brian Baird to sign onto the Americans Against Political Corruption pledge. This is a five-point pledge that candidates across the country are signing to get special interest money out of politics and pass real campaign finance reform. Students will pressure both candidates to provide written plans for what they will do about the environment and special interest money in politics if elected. Students need to show these politicians that we are tired of "business as usual."

WashPIRG is tired of dirty water, polluted air, and disappearing forests. Students need to let our politicians know how they feel. Voting is one of the many ways students have to protect the environment. WashPIRG and other student groups on campus will be registering students to vote all this week. The last day to register is October 3, and if you've moved since you last voted, you need to re-register. Stop by the WashPIRG table outside the CAB to register and find out more about the Students Against Political Corruption campaign.

WashPIRG's other big campaign is expanding the public's right to know about toxic chemicals. There are currently 72,000 toxic chemicals in use by industry, yet they are required to report less than 1% of those chemicals. At a time when cancer rates are rising and the degradation of our environment continues, not knowing the effects of these toxins is pushing people towards self-extinction. Students will be pressuring Clinton to pass an expanded Community Right To Know Act, increasing the number of toxic chemicals reported, as well as the number of industries that have to report. The fact that so many industries do not have to report what they use is a perfect example of how they are buying influence in Congress.

WashPIRG's other campaigns include Water Watch and Hunger and Homelessness. Last year, Evergreen students pulled tons of trash out of local streams with our Water Watch program. Students will again be cleaning up local water ways as well as restoring salmon streams and teaching elementary students about the importance of watersheds, protecting endangered species, and how they can protect the environment.

WashPIRG will also continue our Hunger and Homelessness campaign, educating both the campus and the community about hunger and homelessness. Students will be working regularly in local shelters, as well as doing an awareness fast and sleep-out, an Oxfam dinner, and a week of education and community service at the end of November with Hunger and Homelessness Week.

To find out more about any of their campaigns, stop by their office, Lecture Hall Rm #10, or call campus extension 6058. WashPIRG will be hosting a General Interest Meeting on October 16, where they will be discussing these campaigns and local environmental issues in detail. WashPIRG also offers internships for course credit working on these and other environmental issues.

-Cameron Green is the campus coordinator of WashPIRG

WashPIRG is tired of dirty water, polluted air, and disappearing forests. Students need to let our politicians know how they feel.



Thursday, October 3

The Evergreen Queer Alliance is having queer MOVIES for free tonight starting at 6. Movies shown will be *Go Fish* (starring my future wife Guinn Turner) and *Boy Shorts*, up in the S&A Office.

"Reflections Of Seattle's Chinese Americans: The First 100 Years", an award-winning exhibit featuring 49 intimate stories and portraits of Chinese American elders, will be on display starting today at the Bellevue Square Bon Marche.

Friday, October 4

I wish I could tell you all the details of tonight's Art Walk because it is such a fun Oly event, especially for those of you who are new in town. Unfortunately, I only have the details of the three following events but I encourage everyone to go downtown and wander around tonight and I'm sure you'll find even more cool stuff. Childhood's End Gallery (222 West 4th Ave.) celebrates its 25th anniversary with a reception recognizing artists Susan Christian, Kate and William Jacobson, Debra Van Tuinen, Lisa Baack, and Kathy Hughes. Their art will be on exhibit through November 17. Four Seasons Books (7th & Franklin) we'll have artists, musicians, and poets. Both of these events will be going on from 5-10. At 6, Some Velvet Sidewalk, Engine 54 and guests will be playing on the corner of Capitol Way and State St.

The Calendar



by Cristin "Tin Tin" Carr

Sunday, October 6

Goodness, Sister Psychic, and Jodi WATTS play tonight at the Capitol Theater. CPJ A&E Editor, Jen Koogler, says Goodness is "rad".

Saturday, October 5

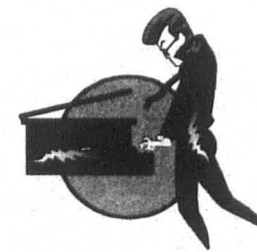
Margaret Li, Chen Cao and Evergreen students perform An Enchanted Evening of Chinese Opera. See Jen Koogler's article on page 12 for all the details.

Master Wen-Mei YU teaches Liangong, a Chinese health exercise, today from 10-12 and 2-5 in CRC 116. The workshop is \$45 for TESC students. Tomorrow from 10-1 and 3-6 and Monday from 5-9 she teaches Wild Goose Qigong (Dayan Qigong) and it costs \$90 for students. Call Laurie Meeker at ext. 6613 or Debbie Leung at 360-493-1107 for more info. Pre-registration required.

Tuesday, October 8

Starting today you can spend your lunch break on Tuesdays and Thursdays shaking your butt and getting in shape at Lunchtyme Aerobics. Class is from 12:15-12:45 in CRC 116. Cost is \$22, register at the CRC office.

Award-winning playwright and film maker Philip Kan Gotanda will screen two of his short films and discuss his works tonight at the Nippon Kan Theater at 628 S. Washington in Seattle. From 9, suggested donation of \$5.



Olympian musician Andy Crow accompanies the 1925 silent film "The Phantom of the Opera" at the Washington Center for the Performing Arts at 2 pm, the first of a three-movie series. Tickets are \$8 or \$18 for the series.

Student Group Meetings:

Irish - American Student Organization meets Wednesdays at 1:30 pm in CAB 320.

The Women's Resource Center is having a general meeting Thursday Oct. 10 in CAB 206 (the office next to the Deli).

The Women In Technology and Science (WITS) group is meeting Monday, Oct. 7 in CAB 206.

The Evergreen Queer Alliance will be open for lunch Tuesday-Friday from noon to one starting Oct. 1. Come in and browse, talk, listen to music, hang out.



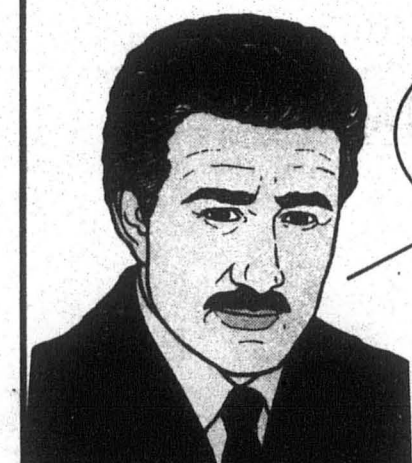
Join the fun!

No Sports Page?

Please note, the editorial staff has dropped the sports page. This decision was made to allow the paper more flexibility for layout. Additionally, there is no sports editor yet this year.

The Cooper Point Journal is still committed to covering Evergreen sports, and we will eagerly create a sports editor position if anyone wants it and is willing make a regular commitment to the work it entails. If you are interested in writing, soliciting, coordinating, and editing sports stories, please come to the CPJ office in CAB 316 or call us at Evergreen extension 6213.

Sick of seeing all this damn clipart on the calendar page? Then tell the CPJ about your events. You'll get free publicity and you'll never again have to see stupid clipart like this:



Submit.

COOPER'S GLEN APARTMENTS

A Warm Welcome To All New And Returning Students.

From:
The Management of Cooper's Glen

866-8181 3138 Overhulse Rd. N.W.

CAMPUS REP WANTED

The nation's leader in college marketing is seeking an energetic, entrepreneurial student for the position of campus rep. No sales involved. Place advertising on bulletin boards for companies such as American Express and Microsoft. Great part-time job earnings. Choose your own hours. 4-8 hours per week required. Call:

Campus Rep Program
American Passage Media Corp.
401 2nd Avenue West, Seattle, WA 98119
(800) 487-2434 Ext. 4444

Apple Computer, Inc.

is seeking a qualified Student Rep to serve as a sales liaison between Apple and the State of Washington. Must have strong sales skills, knowledge of Macintosh technology & be a self starter.

Hours: 20/wk.
Fax resume to Apple Computer, Attn: Tori Peters, 503-635-2212 before 10/30/96.

WASHTUB LAUNDROMAT

The only self-service laundromat on the west side

Drop-off dry cleaning down comforters--no problem!

Finally...a reason to wash your clothes 943-9714

2103 Harrison Ave. across from Value Village

Olympia Potters & Artists Supply, Inc.

Ask about in store discounts up to 40% off selected items for a limited time.

biggest little art store around

10-7 Mon-Thur
10-6 Fri
10-5 SAT & SUN

See online catalogue at <http://www.olywa.net/opas>

1822 Harrison Ave
943-5332

for rent

Three rooms, 2 baths for rent. Luxury Apple Park Apartments (Capital Mall Dr.) Indoor pool, sauna, spa, weights, raquetball. \$225 each, w/2 sharing bath. \$300 large room, private bath. 786-9207.

grants & scholarships

FREE FINANCIAL AID! Over \$6 Billion in public and private sector grants & scholarships is now available. All students are eligible regardless of grades, income, or parent's income. Let us help. Call Student Financial Services: 1-800-263-6495 ext. F60914

Deadline 3 p.m. Monday. Contact Keith Weaver. Phone (360) 866-6000 x6054 or stop by the CPJ CAB 316, Olympia, WA 98505.

classifieds employment

Immediate openings TELEPHONE SALES (Experience a plus) Positions start at \$6.00 increasing to \$6.50 after 160 hours, plus bonus incentives. Company paid benefits and opportunities for advancement. Seeking full-time and part-time employees.
Telemark Inc148 Airdustrial Way Tumwater, WA 98501 (800) 786-0929

WORK IN THE OUTDOORS- National Parks, Forests, Wildlife Preserves, & Concessionaires are now hiring seasonal workers. Excellent benefits + bonuses! Call: 1-206-971-3620 ext. N60915

TROPICAL RESORTS HIRING- Entry-level & career positions available worldwide (Hawaii, Mexico, Caribbean, etc.). Waitstaff, housekeepers, SCUBA dive leaders, fitness counselors, and more. Call Resort Employment Services 1-206-971-3600 ext.R60914

ALASKA EMPLOYMENT- Students Needed! Fishing Industry. Earn up to \$3,000- \$6,000 + per month. Room and Board! Transportation! Male or Female. No experience necessary. Call (206) 971-3510 ext. A60914

INTERNATIONAL EMPLOYMENT- Earn up to \$25-\$45/ hour teaching basic conversational English in Japan, Taiwan, or S. Korea. No teaching background or Asian languages required. For info. call: (206) 971-3570 ext. J60913

POP QUIZ

- You could get a behind-the-scenes look at the *Rock and Roll Hall of Fame and Museum* or the TV show, *NBA Inside Stuff* by:

 - (A) growing eight more inches of hair or eight inches taller.
 - (B) posing as a custodial worker.
 - (C) dialing 1 800 CALL ATT for collect calls.
- You could get your hands on \$10,000 by:

 - (A) moving to Texas and sucking up to an oil tycoon.
 - (B) holding one heck of a bake sale.
 - (C) dialing 1 800 CALL ATT for collect calls.

Hey, this is one quiz you might actually ace. Complete a collect call with 1 800 CALL ATT, and you could instantly be one of twenty winners of a week-long, behind-the-scenes look at the *Rock and Roll Hall of Fame and Museum* or the TV show, *NBA Inside Stuff*. Plus \$10,000. Or one of thousands of other great prizes. And prizes are awarded every hour. So pull an all-nighter—on the phone with your mom.

1 800 CALL ATT

It always costs less than 1-800-COLLECT.



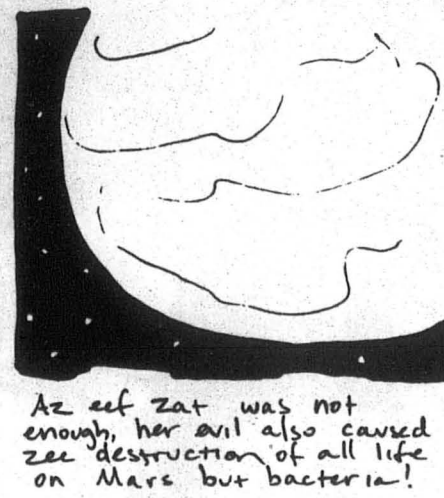
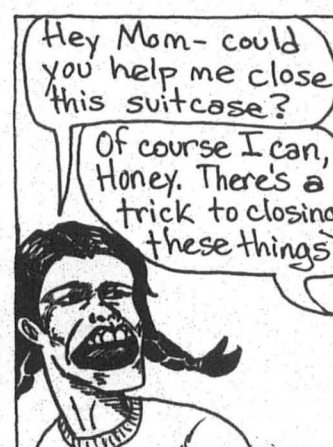
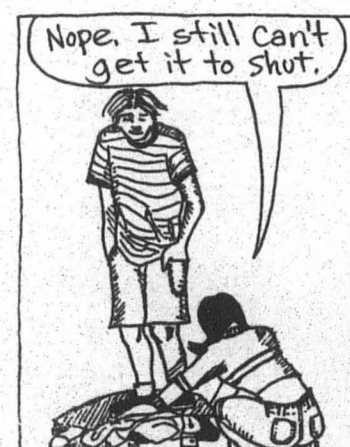
ACTUALLY I DO KINDA LOOK LIKE THIS

HI! I'M A (BAD) DRAWING OF MARIANNE — THE NEW COMICS EDITOR!

PLEASE Submit! DEADLINE FRIDAY, CAB 316 5PM

COMICS PAGE

CRUMB BY McNUTT



YEAR TWO BY LLYWELYN C. GRAEME

Hello and welcome to Year Two! I Thought it would be a good idea to Talk about the kind of Humor you will see every week.

Now This is a Weewil.

And this here is the Lesser of Two Weewils.

Just keep Repeating the last Panel out loud until it seems Funny. SEE You next week!

STREET 35 BY JAY HALEY

MEANWHILE... in between we find our tranquilly traveling



HOSEHEAD BY JOSH KNISELY

