

Cooper Point Journal

SEPTEMBER 29, 1994

THE EVERGREEN STATE COLLEGE

VOLUME 25 ISSUE 1

Evergreen is number 1! Or something..

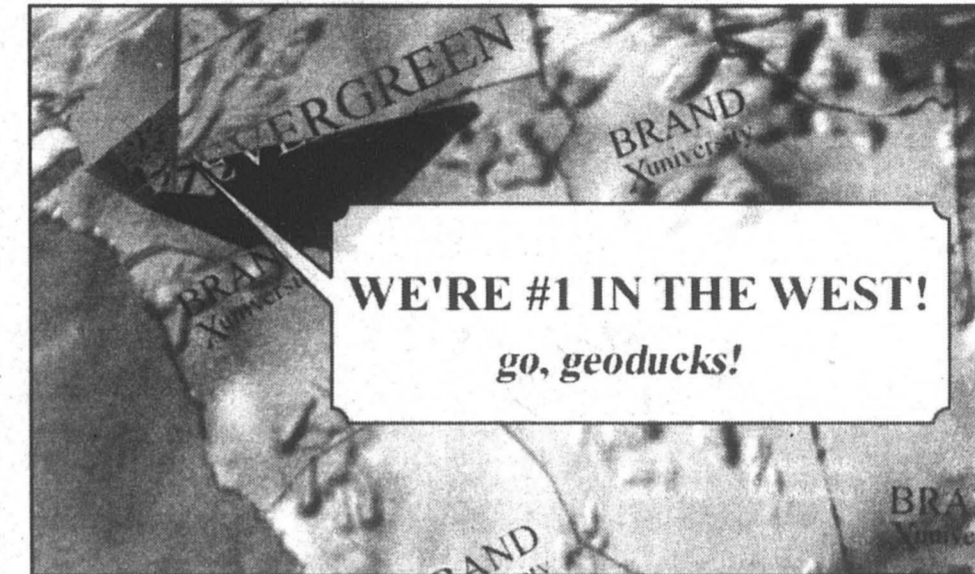
by Natalie Cartwright
CPJ Contributing Writer

The squirtin' Geoducks of Evergreen may not be graded in class, but the school recently made top grades from Alaska to Texas in an annual poll published by US News & World Report. The poll, *America's Best Colleges*, ranked Evergreen as the number one regional liberal arts college in the west.

A statistic that most colleges are clamoring for will be used in moderation at this school. Arnaldo Rodriguez, Dean of Enrollment Services, said, "Although it's always very nice to be mentioned, ours is a soft sell, not a hard sell."

He also said that the really important part of this story was that in addition to Evergreen receiving top honors, the honors came from colleagues at other colleges.

College presidents, deans, and admissions directors were responsible for rating each school's academic reputation. The rest of the information came from each school in the form of statistics and percentages. Student selectivity, faculty resources, financial resources, graduation rate and alumni



Graphic by Aubrey Pullman

satisfaction were tallied up and figured in. For the ratings, colleges were divided into several categories: national universities, regional universities, national liberal arts colleges, regional liberal arts colleges and specialized institutions. Last year Evergreen came in at number

six, but this year many schools were reclassified from the regional liberal arts college category into the national liberal arts college category. Meanwhile Evergreen kept doing more of the same—providing good educational opportunities at a public institution price—and was recognized.

Evergreen was one of the few public colleges that made the top ten. Rodriguez said that the academic component of the college is organized to make the faculty accessible. He added that instead of research, "Teaching here is number one."

And will the respected and highly rated halls of this institution be flooded with applicants? With a smile Rodriguez said, "It would be nice of course, but that is hard to determine."

He said instead there will probably be an increase in information requested about Evergreen from students and parents.

Several other colleges and universities in Washington ranked in the top fifteen of their respective categories. Of regional universities in the west, Gonzaga University (Spokane) came in fifth, Whitworth College (Spokane) came in eighth, Seattle Pacific University placed tenth, Pacific Lutheran University (Tacoma) came in twelfth and Western Washington University (Bellingham) rounded off Washington's showing at thirteenth.

The magazine has been available since Sept. 19, but there is still time to impress friends and loved ones. **CPJ**

Barbara Smith takes on Provost's duties

by Teri Tada
CPJ Contributing Writer

Evergreen has welcomed a new provost for the 1994-95 school year, Barbara Leigh Smith.

Smith has served at Evergreen for the past 16 years as an Academic Dean. She has also taught at Lawrence University and the University of Nebraska. Smith served as the founding Director of The Washington Center for Improving Undergraduate Education, an organization of 44 Washington State colleges and universities working toward improving teaching and learning on their campuses through educational reform. She has written numerous books about educational reform and collaborative learning.

The duties of Evergreen's provost include overseeing Evergreen's faculty and entire academic program, and representing the school's interests to the state legislature and Higher Education Coordinating Board.

Smith says she feels both excited and nervous about her new job. "It is a lot of responsibility and I think there are high expectations from the Evergreen community. But I feel privileged to have the opportunity to shape Evergreen in a way that's creative and quality enhancing."

She elaborated on her goals by adding, "I'm very interested in working on curriculum reform—clarifying goals, improving retention and student support in programs, articulating how programs interrelate and fostering a greater sense of collective vision."

"I think Evergreen is experiencing a



photo by Pat Castaldo

New Provost Barbara Smith enjoys a party in her honor at the President's house.

Dogs on campus: Loose dogs pose problems for working dogs and owners

by Lisa Corwine and Reb Pearl
CPJ Contributing Writers

We all like dogs—well, most of us. With the disappearance of the campus kennels and the recent increase in working dogs and aggressive dogs, there has been a "dog problem" of sorts in this community.

Loose dogs can affect the safety of the public and disturb conditions of working dogs on campus.

The Evergreen State College pet policy states that "...Pets and other animals may be on campus only when under the physical control of their owners or keepers...". They are not allowed in buildings unless they are "guide animals accompanying disabled persons, shows or other similar approved events..."

Dog owner Michael Iris brings his golden retriever, Maggie, on campus. He keeps her on a leash "...so I won't get in trouble".

Michael feels dog policies are kind of "ridiculous" and that pet owners should have a good enough relationship with their dogs to handle them verbally. But he understands that not all dog owners are responsible enough to train their dogs well and not all breeds of dogs are the same.

Dawn Hultman, administrative secretary for Vice President of Student Affairs Art Constantino, has peripheral shadow vision and is assisted by her working dog, Wendy. She points out that



photo by Betty Schluter

Administrative Secretary Dawn Hultman walks with her dog Wendy.

the "ideal working environment" for Wendy would be free from distractions such as loose dogs. This is impossible at TESC and in most public places where Wendy does her job.

The pair have been only "slightly affected" by other dogs in Hultman's two months on campus. Squirrels and barking dogs seem to be her biggest, or most occurring problem.

Other dogs can be aggressive around

see **Dogs** page 7

THE EVERGREEN STATE COLLEGE
Olympia, WA 98505

ADDRESS CORRECTION REQUESTED

BULK-RATE
U.S. POSTAGE PAID
OLYMPIA, WA 98505
PERMIT NO. 65

Art by Isaac Shultz Reyes. The Last Seepage. This week's theme: Religion! (and horror!) The eskimo and Northwest vegetation in Eastern Philosophy. On Watching a Documentary of Nazi War Crimes, 40 Years Later. Throaty orders in November, fraught with cold and framed by breathmist. He found a letter and believed something of it: significance. And this was his crime, maybe: his innocence, his belief, his fascination. I. Clandestine meetings of people who revulse each other. No one knew the gossip of their betrayal would become a screenplay decades later, entertaining an audience of slackneck students with its darkness, its mystery, its brutal deaths. III. Fragile tortured whispers: why? why? why? Two generations later, and already it seems relative. If there was camaraderie, we believe it to be circumstantial. The chumhood of killers eludes us. IV. Nightblame. Murder-famous are our times. Tear off innocent questions. Snatch their stingers from your skin. Let nothing threaten that other you, the you of chat-riden sunny days, of coffee and sandwiches. Let civility solder your lips shut, let the last escape route be guarded. And most of all, stay calm. Nightblind. Refuse to see the safety that condemns you. In A Shadow Boat. Shadow people and a Shadow Boat, a shattered Cross and a Mask of Clouds that float. Castles with dark dungeons in the sky. Silken masks floating by. A lone figure staring out towards a distant bay. If he could speak what would he say? The Shadow Boat is beached with no oars. Will the Paper Masks in Silken Cloud Cross the Shadow Bay to the Shadow Crowd? Will the Castles in the air drop to the barren hills and will the Shattered Cross impale the World's Ills? In a Shadow Robe does the figure enfold itself. Hiding its identity it only displays an all too mortal stealth. Do the faces cross the cloud and do the rolling hills roll on with distant water's? Will the Shadow People take the Shadow Cross and cross to the other side? Faces in the sky? Faceless figures as ethereal as air passing with only a gentle sigh. Inspired by a painting by Mr. Isaac Shultz Reyes. submitted by TOM KENSTOWICZ Edited by Conrad Sabaat. Ed Nielson. Raymond Wa. Eye Stepping to Hour Glass. With a sigh, the dancing limb leaps past the eyes, ascending the steps towards the Hour Glass. Trembling matter almost touching bone ensconced in glass. Skeletal frame built upon Time's passing. Planets dotting the sky as the eye stares back through black hair blowing in the wind. The croaky peaks tower some miles distant from the eerie tableaus. The dancing limb will stay poised on that final step as the sands fill up with the image of Death. Life embossed within the living breath. The eye will remain focused upon nothing. It allows all things to pass its way but life and death will not force it to look their way. Will the Life Force shatter the Hourglass? What worlds can then pass between Heaven and Hell? The Eye is the window of the soul but where does the soul go? Inspired by a painting by Mr. Isaac Shultz Reyes. Thank to all those who contributed! Thank to all those who contributed!

- List of contributors, KKKK CCW from bottom right corner: J.R. Miller; Mrs. Miller; Fezdak; Andrew Johnson; Andrew Jackson Jimmy Carter; Ellen Arthur; Varina Howell; Robert E. Lee; Pierre Beauregard; Elvis Presley; Hank Williams N.H. Dixon (business Manager); A.E. Hayes; Bessie Richardson; J.E. Glayzer & her sister P.C. Jefferson; MMs. America 1951; Ms. America 1979; Carrie Nation; Willie McCoy; Jefferson Davis; Johnny Cash; Billy Holiday; Patsy Cline; Margaret Wood; Burt Reynolds; Edgar Alan Poe; Ricky Nelson; Mary Britton; Flannery O'Conner; Eliza Johnson;

EVERGREEN

Grounds Crew thanks "Mystery Weeders"

A very sincere thank you goes out to "the Mystery Weeders," the group of Greens that have taken it upon themselves to voluntarily weed some of the planting beds around campus, from the Ground Maintenance Crew.

Due to the reduction in the size of their crew, they have found that maintaining the campus beds at the level they would like, has been difficult.

Therefore, if you are one of these mysterious weeders (or would like to become one) the Ground Maintenance Crew would like to assist by providing tools, gloves, and buckets. For information call them at x6349.

Massage offered by Pathways to Wellness

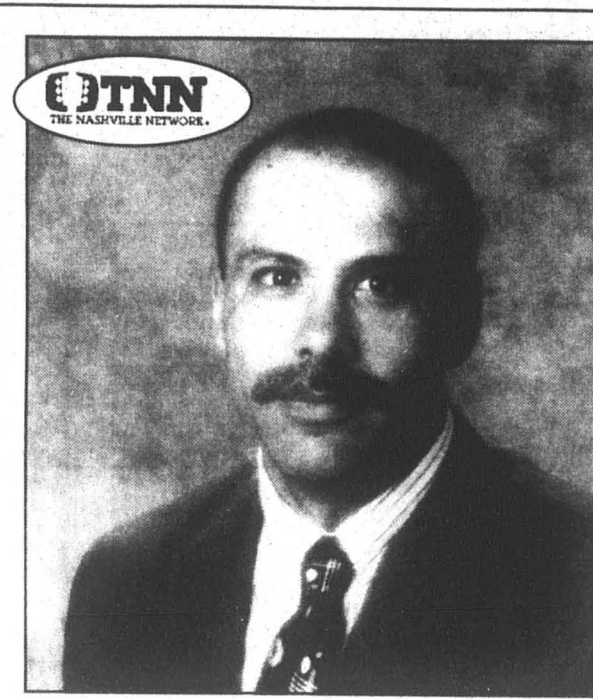
The Pathways to Wellness will kick off an on-campus massage program beginning with a demonstration Thursday, Sept. 29, 1994 in the Library Lobby from 1-3p.m.

Table and chair massages are both available. For a table massage, make an appointment at the CRC, and for a chair massage, drop by the Library lobby Wednesdays and Thursdays, from 3-5 p.m.

Sue Felman appointed as Grievance Officer

TESC visiting faculty member Sue Feldman has been named to serve as Campus Grievance Officer for the 1994-1995 Academic Year. Feldman is replacing Helena Meyer-Knapp, who is on leave this year.

Feldman shall be responsible for determining if violations to the Student Conduct Code have occurred. She will investigate and initiate formal disciplinary action on behalf of the College. The Campus Grievance Officer also works with the Office of Vice-President for Student Affairs to insure a fair disciplinary process for students.



TENNESSEE

Greener Grad hired as manager at TNN

TNN: The Nashville Network now has an Evergreen connection. It comes in the form of TESC graduate Bob Danielle, the new Manager of Program Scheduling for the network.

The Nashville Network features country music oriented variety show and other programming. TNN is available (in some areas) on local cable channel 46.

In his position, Danielle will be responsible for scheduling The Nashville Network's programming based on audience trends and information on competitive programs.

Danielle received his B.A. in communications here in 1993, later working at KSTW-TV in Tacoma as Program Director/Operations Manager before his move to TNN.

Academic Calendar Hearing to be held

On Tuesday, Oct. 11, at 4:30 in Board Room L3112 a public hearing concerning the changing of Evergreen's calendar from quarters to semesters, will be held. The changes will be effective for the summer of 1996.

The changes to the academic calendar come as a result of months of research, student forums and other such forums to get student reactions about the changes. This is the last open forum before President Jane Jervis recommends the change to the Board of Trustees.

Board of Trustees seeks suggestions

The Board of Trustees is conducting a self-evaluation, and is inviting the Evergreen community to participate in the process. To do so, submit

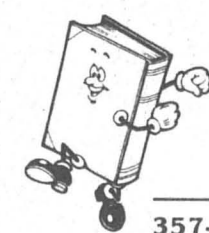
a written assessment to the President's Office by Monday, Sept. 30. The Board will be commenting on the issues that occupied the board's time, the board's success in the past year, the shortcomings of the board's performance and any other comments or suggestions that could help in the process.

Errata

The *Cooper Point Journal* produced an Orientation Issue this year. It was the first year in a long time we've had one to offer students new to Evergreen. Admittedly, there were several typographical errors and Barb Findlen's name was misspelled in the process. We regret these mistakes, and implore you to bear with us. The *CPJ* is a learning laboratory, and occasionally things don't work.

Browsers Book Shop

Huge selections of non-fiction bargains



Hours:
Mon. - Sat. 10 to 6:00
Fri. 10 to 8:00
Sun. 12 to 4:00

357-7462
101 N. Capitol Way
Downtown

LILLY ROAD OPTICAL
"Look to the light of Lilly road."
Quality Spectacles & Hip Shades
An easy ride on IT Bus #60
418 Lilly Road NE 456-1930

MONTH OF OCTOBER

COPIES
2¢
Limit 500 per customer.
COPIES BY KONICA 8.5"x11" White Bond

Westside's #1 Copy Center and Shipping Outlet

AIR FREIGHT MOTOR FREIGHT
VAN LINES OVERNIGHT
UPS AUTHORIZED SHIPPING OUTLET

MAIL BOXES ETC.

1001 Cooper Point Road SW
(Across From Toys 'R' Us)
705-2636

Financial Aid improved Consultant's suggestions taken to heart

by Lyn Iverson and Krisna Meniece
CPJ Contributing Writers

Yes, another school year is upon us, and the terror begins to build with the thought of standing in those endless, aggravating Financial Aid lines, right? *Wrong!* Things have changed for the better this year, thanks to the implementation of changes recommended by Financial Aid consultant Dianne Tsukamaki.

For those new to Evergreen, here's a recap. Last winter, TESC hired Tsukamaki, a professional consultant, to find out what was wrong with our financial aid system and to advise the financial aid staff on how to eliminate the problems. She listened to staff and student's complaints regarding the financial aid processes, reviewed the processes themselves and submitted her report.

Arnaldo Rodriguez, Dean of Enrollment Services, reports that almost all of the recommendations were implemented by September. The changes that were made include:

- More staff members were hired, removing the staff's strain of being overburdened with literally thousands of applications.

- An additional phone line was added and the messages left on voice mail are answered usually within 24 hours. This procedure previously took quite a bit longer.

- Actual loan processing procedures were streamlined to take less time.

- All staff in Financial Aid were moved onto Intel 486 computers, allowing them to do the same tasks in less time than they could have

previously.

- The actual set up of the office was changed, allowing easier access for handicapped students and personnel.

- Stafford loans are now processed electronically, often times cutting two weeks out of the processing time.

- Funds can now be transferred electronically from the Northwest Education Loan System, thus reducing the wait period for checks to arrive. This also makes it easier to pay fees and reducing the number of students waiting in the cashiers line.

- An interface package was implemented, allowing the Financial Aid Office to communicate with other departments more readily.

Rodriguez admits that there are still a few unhappy students, largely due to the fact that the Federal government went through the reauthorization process this year. This means that while you were eligible for certain types of aid last year, you may not be eligible for them this year. This is not because the financial aid office doesn't find the student needy, but because the government changed the requirements.

He also said that a large amount of this year's problems stemmed from incomplete forms, discrepancies in the information provided, actual information.

Now, Rodriguez pointed out, "[The staff's] morale is much better." Student's morale should be better also now that 315 more award letters were sent out this year than last year. **CPJ**

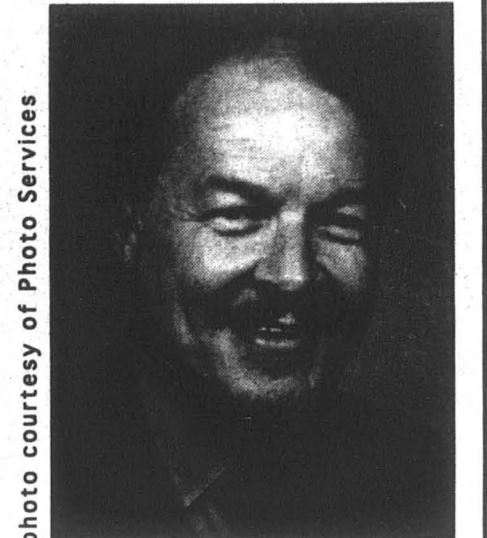


photo courtesy of Photo Services

Charles Teske recalls TESC's beginnings

by Nathan Woods
CPJ Contributing Writer

It is 1967: The Washington State Legislature passes an official act founding The Evergreen State College. Two years later, Charles Teske is contacted after making noise over academic departmentalization while teaching at Oberlin College. The following year, Teske was hired as one of three Academic Deans. After vigorous recruitment, 18 planning faculty members begin working on an alternative education.

"Initially we did not have any mandate whatsoever to do what we did," recalls Teske. "What was alternative about us was the whole way we organized the conditions under which student and faculty members meet."

Part of what the original planning faculty succeeded in doing was to create a set of "simple forms" that lent themselves to dynamic change. These simple forms later became Coordinated Studies, originally called "theme teams," and individual/group contracts.

The alternative conditions that continue to function have always contributed to an air of mystique and misunderstanding.

The College appeared especially credulous given the landscape in which it originated. Amid Kent State, a succession

of College riots and the Chicago Democratic Convention, the burgeoning Evergreen was not always so welcome a community member.

"It was so easy to say what we weren't going to do, but to try to explain what we were going to do and why we were going to do it was...very difficult."

For Teske, the idea of continual change seems inherent to Evergreen's nature. From the beginning, everything from the curriculum to the architecture was designed for the idea of change and expansion.

"The performing arts building" which Teske designed "is only in stage one...You really can't understand this place unless you realize that by now we were supposed to have 12,000 students."

It is 1994. This quarter Charles Teske partakes in, what seems to be, a long tradition of interdisciplinary academic work. Along with individual contract sponsorships he is currently endeavoring to transcribe audio tapes of the early planning meetings.

When asked what changes he would like to see in Evergreen's future, Teske energetically replies, "I would fight fiercely for us to build a protective wall with many doors, so that people on the inside can work themselves to death studying what is really important." **CPJ**

Evergreen Expressions

PRESENTS AN AMAZING SEASON OF MUSIC THEATRE AND DANCE

Student Flex Pass

See six fabulous events for only \$13.00

(not including Pat Graney Dance)

special offer for Evergreen students only

Pick up a brochure in the TESC Bookstore or the Library or 866-6833 for more information

Don't miss out on this incredible deal - offer good through October 31

HARBINGER INN Bed & Breakfast

Charming 1910 Mansion
Overlooking the Puget Sound & the Olympic Mountains.

1136 East Bay Dr, Olympia 98506 • 754-0389

Orca Books
Largest Used Bookstore in Olympia

Buy • Sell • Trade
Quality Books & Games

509 4th Ave. E. Downtown Olympia
352-0123

You are next the CPJ Distribution Manager.

1. Must have a valid WSDL and up-to-date insurance.
2. Must be available to work all day on Thursdays.
3. Must be a returning Evergreen student currently registered for 8 or more credits.
4. Must be responsible and punctual.

Deadline for applications: October 3, 1994
Pick up applications in CAB 316 or contact Julie Crossland at ext. 6054 for more information.

Jervis recommends semester conversion

by Pat Castaldo
CPJ Managing Editor

On Wednesday, Oct. 12 President Jane Jervis will recommend to the Board of Trustees that Evergreen convert from its current quarter system to an early semester calendar.

This decision is the result of a long process which began last fall when Jervis commissioned a Disappearing Task Force (DTF) to address long-range and strategic planning through the year 2010. The DTF had representatives from all facets of the Evergreen community; students, faculty, staff and trustees. An interim report was presented to the faculty during their February 1994 retreat.

The suggestion arose from the discussion that ensued at the retreat to convert Evergreen's calendar to a semester system. Unlike the current quarter system, which has three ten week sections (Fall, Winter, Spring), the semester system has only two 15 week periods.

"Semesters allow for greater depth of commitment," said Jervis as one reason for the change.

Many students were opposed to the idea last spring, for a variety of reasons. The primary one, brought up again and again, was that with only two chances to select classes, students' educational experiences would be severely limited. Students felt they would be "stuck" in classes they didn't like, with no chance to switch. Some students complained that 15 weeks is a long time in a class you are unhappy with.

Another reason students were opposed to the switch was that tuition would have to be bigger to compensate for the longer quarters. Many students have felt added pressure this year already, as tuition is now due in its entirety at the beginning of the quarter.

The simple matter of class beginning earlier in the fall presented problems for other students. Classes would begin before labor day, and end in May, perhaps posing difficulties for those seeking summer employment.

Two open forums were sponsored by the deans on March 9 and April 6, 1994 so that staff and faculty could receive student input. The meetings were well attended, and covered in-depth by the *Cooper Point Journal*.

Faculty then met on April 13 in unprecedented numbers. A vote was cast 49-41 in favor of the conversion. The faculty vote proved influential in Jervis' decision, though many students were still dissatisfied.

Students expressed feeling completely left out of the loop—that despite Evergreen's student-centered philosophy, students had no say and it was the faculty's decision.

Jervis addresses this issue in her Sept. 22 memo to the community: "In any college or university, the faculty is responsible for the academic program. Though there may be strong student involvement in the development of programs or curricula, the professional responsibility rests with the faculty for designing and conducting the curriculum, assessing students and certifying student completion of academic programs and their eligibility for degrees."

This debate lasted until the end of the academic year, when the majority of students, faculty and staff left for summer vacation. The only new information Jervis received during the summer months was the budgetary reports from different departments.

"It will cost money at first," said Jervis. Her memo cites a one-time conversion cost of \$50,000, mostly for computer reprogramming. The estimated total to be saved annually after the conversion is \$19,000. While Jervis says the change "makes sense economically," it is not her only reason for recommending the change.

Pedagogy and energy are the two primary reasons Jervis listed. Pedagogy refers to the type of education provided at Evergreen. Because courses are traditionally year long and interdisciplinary, "many faculty members and some students believe that semesters offer the opportunity for greater continuity and depth of study in a program, that having some students leave and others enter a program twice during the year is disruptive to the functioning of the seminar or of research programs, and that semester-long internships offer greater opportunity for developing meaningful skills and insights," said Jervis in her memo.

The semester calendar gives faculty additional time for curricular planning. Faculty believe that planning time is in direct correlation to course quality, with increased planning resulting in better courses, according to Jervis.

Jervis cites people's energy levels as the most compelling argument for semester conversion. Over the past ten years, student enrollment has increased 50 percent, while staffing levels have decreased. The student-to-faculty ratio is higher now than it has ever been.

Jervis claims, "staff throughout the college are working harder and are under greater stress than ever before, and the state's fiscal environment promises us only deeper cuts and more students."

She cites start-up and close-

see Semesters page 7



photo by Pat Castaldo

Jane Jervis serves punch to guests in her home as she welcomes Provost Barbara Smith. The Provost will play a big role in curriculum redevelopment, should the Board of Trustees approve Jervis' recommendation to switch to semesters.

became popular. Before that, people improvised, using knives, bayonets or a chisel and hammer.

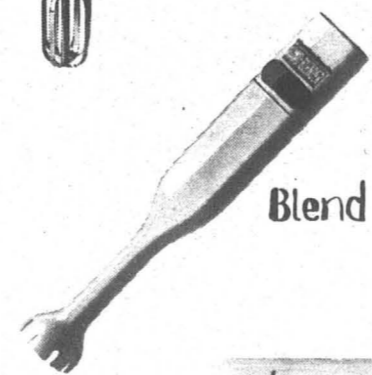
Opening line: The first electric can opener was introduced in 1931. Although the can was developed in 1810, it wasn't until the American Civil War that the first patented manual can opener



Toast a bagel.



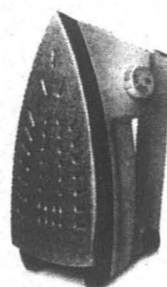
Mix a pie filling.



Blend a drink.



Open a can.



Cook a grilled cheese sandwich.

Your choice, 9.99 each. From Hamilton Beach: Power Pierce can opener, hand blender, 5-speed mixer. From Proctor-Silex: Wide-slot toaster, lightweight iron.



Take the whole family to the Washtub Laundromat!



Come visit the Washtub Laundromat. And while you're there, you might as well do your laundry. After all, we're the only self-service laundromat on the westside!

We also feature drop-off/dry cleaning. And "down" sleeping bags? No problem!

Located on 2103 Harrison Ave, across from the new Value Village...943-9714.

Finally...a reason to wash your clothes!

Sub Shop
"Vegetarian Delight"
Regular: \$4.69
only \$4.19 with student I.D.
#133
943-7229
2106 Harrison Avenue
(Westside Shopping Center)

"Zinc Free Wax" makes CAB floors shine

by Pat Castaldo
CPJ Managing Editor

Zinc Free Wax makes the CAB floors bright and shiny.

New and returning students began arriving on campus Friday, Sept. 16 to find the floor of their favorite activities building reflecting a bit more light than normal.

"What's up with that?" remarked first year student Johnny Fink.

Late in the evening of Sept. 15, a crew of highly trained custodial professionals were deployed into the College Activities Building: Their mission: to restore the lustrous shine to the red bricks which constitute the building's floor.

The team worked late into the night, with several waxers running simultaneously. Giant exhaust fans were placed by the entrances of the CAB to help in the ventilation process. A heavy waxy redolence filled the air that night, drying to an odorless shine the next day.

Over thirty gallons of Zinc Free Wax were used on the main floor alone. This application of Zinc Free Wax cost \$12.50 per gallon, a little under \$400 total. Custodial Manager Yuki Chancellor reports, however, that future applications will cost even more.

The current price for Zinc Free Wax is now \$37.50 per gallon. Chancellor says that price is so high because of the stringent safety requirements imposed on cleaning materials. She has been shopping around for the best price, but there aren't that many distributors who sell waxes which meet the necessary safety standards.

"Students should have a nice, clean and comfortable place to learn," Chancellor said, between answering phone calls and searching through purchase orders. "Students pay lots of tuition, and should get the best for what they pay."

This includes health safety. All products used by custodial services must be approved by Chancellor, and she does not purchase anything that has been deemed unsafe to students, staff and faculty.

The second floor of the CAB has the highest foot traffic of any building on campus. Thousands of feet travel over the signature red bricks daily, putting excessive wear on the floor. Chancellor recommends that the floors be waxed at least once a year to avoid detrimental deterioration.

With recent budget cuts, and more pending in this year's legislature, the CAB floor may never shine like it does now. ☺

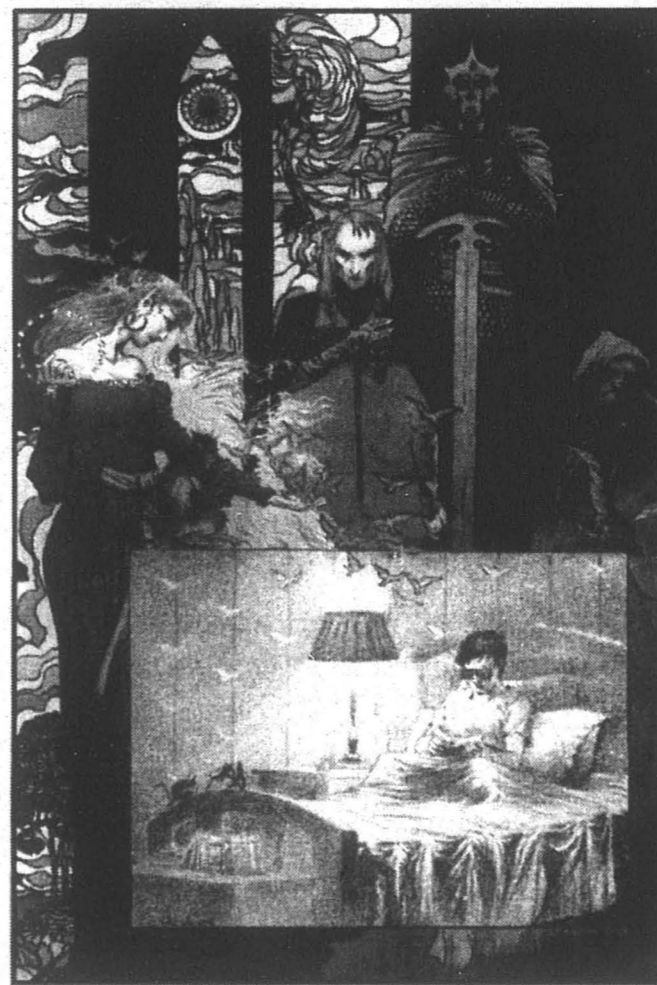


photo by Aaron Gritzka

Yikes! In this obviously staged photo, a student is blinded by the intense reflection off of the newly waxed CAB floor. "Zinc Free Wax" was used this year, producing a shine that seems degrees brighter than ever before.

Have you ever wanted to see your words in print?
Write for the Cooper Point Journal.
Story meetings every Thursday @ 4pm in CAB 316

MAGIC IS ALL AROUND
IF YOU HAVE EYES TO SEE.



A new, ongoing monthly series featuring Timothy Hunter.

the BOOKS of MAGIC™

CHOOSE TO BELIEVE.

JOHN NEY RIEBER & GARY AMARO & PETER GROSS

COVERS BY CHARLES VESS

Vertigo and THE BOOKS OF MAGIC are trademarks of DC Comics ©1994. All Rights Reserved.

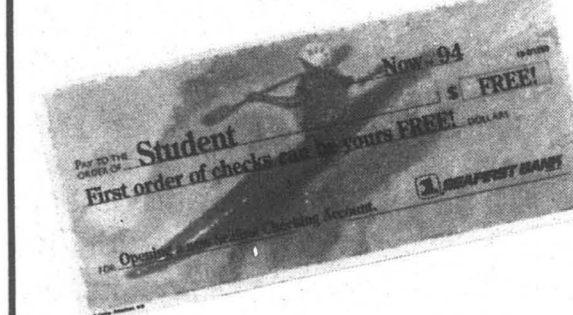
AVAILABLE AT:

Danger Room Comics

201 4th Avenue
Phone: 705-3050

ATTENTION STUDENTS

Check Out Your Free Choices.



Open a new Versatel® checking account, and you'll get your first order of checks free. And you can choose your checks from our terrific new designs - 19 different styles to select from in all.

With Versatel checking, if you do your routine banking through any of our 2000 Versateller® branch cash machines*, or call our 24-hour self-service customer service line you won't pay a monthly service or per-check charge and you won't have to maintain a minimum balance. (Otherwise, you'll pay a \$3 banker assistance charge.)

Banking with us is so convenient, you can even come in on the weekend. So stop by Seafirst today and find out more about your free choices, or give us a call today and graduate to better banking.



West Olympia Top Foods Branch
1313 Cooper Point Rd. SW
352-4280

Black Lake Branch
910 Black Lake Blvd.
754-3630

To open an account you must be 16 years of age and meet the bank's standard ID requirements or a parent or guardian must co-sign. *Deposits and payments can only be made at Versateller cash machines located at Seafirst branches.

Exposer caught over summer

Quick reporting helps put exposer in jail

by Lyn Iverson and Jenny Jenkins
CPJ Intern and Contributor

This summer, on Aug. 26, campus security caught and arrested Jeffrey Scott for indecent exposure. He is one of only five arrested for the offense, more commonly known as "flashing." Campus Police Sergeant Larry Savage has been here for twelve years, and has investigated countless numbers of indecent exposure reports.

When asked why the number of arrests seemed so low, he said that it was because people take too long to report the incident. "In one case, a woman waited two days to make her report, obviously he's not going to still be there," said Savage.

Savage said that the man arrested on Aug. 26, (a white, 37-year-old, blond, male resident of Olympia,) had been masturbating on the Evergreen beach over the course of the last five years. Savage said that the man began in the seclusion of shrubbery during the first two of those years, gradually becoming bolder when the man supposedly began to notice others masturbating on the beach in full view.

According to Savage, the man moved more into the open over the past three years. It wasn't until Aug. 26, 1994 that three women noticed the man, were upset by his behavior, and reported him to the Security office.

They gave a description, and officers Darwin Eddy, Kirk Talmadge and Lana Brewster immediately headed for the last

known location of the suspect. They apprehended him stark naked, as he was returning to his vehicle. He was arrested by officer Brewster, taken to Thurston County Jail and booked for indecent exposure.

If you are the victim of such an exposure, and you want this person apprehended, report it immediately.

• Go to the nearest phone and call security at x6140.

• Give the officer a description of the suspect, license number if you see them go to a vehicle and your name and phone number so they can call you back for further information.

• If the suspect is apprehended, you may be called to identify the suspect from a photo montage, and you may need to testify in court.

Savage said that the first offense of indecent exposure, statute number 9A.88.010, is only a misdemeanor. It carries a fine of about \$100 and mandatory sexual deviancy counseling. If there is a second offense, however, the stakes go up. Then it is considered a felony, punishable with up to five years in prison and a \$10,000 fine.

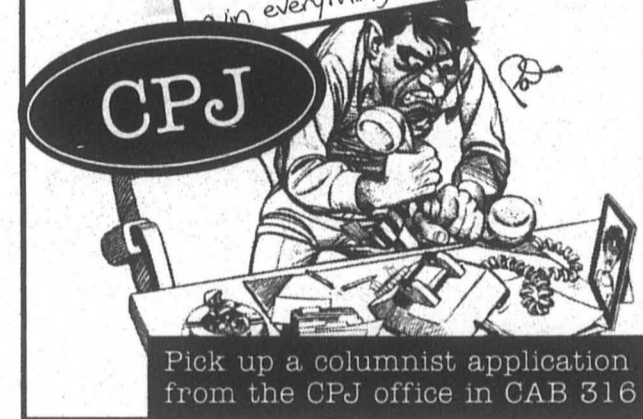
According to Savage, there were about 13 exposure reports last year, most of them during the summer.

Savage said he felt "that the fact that our beach was listed in a book called 100 Best Nude Beaches In North America has a lot to do with the number of exposure cases." Savage said the book was written by an Evergreen alumni, and is in error because the Evergreen beach is not a designated nude beach, and such exposure is considered a criminal offense there.

"I don't go down there just to go down there. We don't go down there unless there is a report, but when we do go down there we have to tell everybody to put their clothes back on, knowing that as soon as we leave the clothes will come back off," Savage said.

COLUMNISTS?

They say, what's on their mind all the time. They are focused and to the point. They really make me think I hate that. I hate thinking. They bring up relevant societal issues and problems, and I hate problems. They make me laugh I hate laughing. They inform me on things I might not know otherwise. I hate being informed. They are perhaps witty and snug - I hate people who are witty. I'm not witty. They get to work with the CPJ while I'm stuck in this busy office. I hate that. They are articulate and know a bunch of words I don't. I hate that. Those meddling columnists... They'll ruin everything.



Dogs from cover

Wendy, whose job is to guide and protect. Wendy can take such aggression as an attack and will respond to protect herself and Hultman. In the past, Wendy has been approached and jumped on by unleashed dogs, although their owners were present.

Campus police officer Kirk Talmadge says that there have been aggressive attacks in the past. One of their biggest problems has been with tied up dogs, usually in places "where people are", and creating a problem. Children tend to walk up to these dogs, unaware the dog may be aggressive or frightened. A couple children have been bitten in the past.

Students, staff and faculty used to be able to leave their dogs in kennels (behind LAB II)

maintained by security, while they went to class or work. With the Longhouse construction, the kennels had to be moved. There was quite an uproar when they disappeared, according to Facilities, since they didn't warn anyone the kennels were going to be removed.

There are plans to build new holding pens within the next few weeks. Public Safety will use these to hold stray dogs (which are defined as loose or tied up dogs without actual physical control by their owners), until Thurston County Animal Control comes to pick them up. But the Evergreen community will no longer be able to use these pens at their disposal.

WHAT IS KEY (Keep Enhancing Yourself)? A federally funded "TRIO" Program, which includes Upward Bound, Talent Search and 1,800 similar programs across the country.

WHY WE'RE HERE...

The purpose of KEY is to assist students to successfully complete their college education.

WHAT WE CAN DO FOR YOU...

- Academic Skills Improvement
- Personal Advising
- Academic Counseling and Advising
- Financial aid Counseling and Advising
- Free Tutoring
- Cultural and Educational Outings
- Career Exploration
- Campus Orientation and Referral

YOU CAN JOIN IF YOU...

- Are a first generation college student—neither parent has a four year degree; or
- Qualify for low income status under federal guidelines; or
- Have a physical disability or recently documented learning disability.

HOW TO FIND US AND SIGN UP...

- Come to the Student Advising Center, first floor of the Library building, Rm. 1407 (our office hours are 8 am to 5 pm; office hours on the Tacoma Campus vary).
- Call our office at 866-6000, ext. 6464. From the Tacoma Campus call toll-free ext. 6464.

FYI...

- You can refer students to KEY or bring them by to meet us or they must self identify as eligible for the program.
- Admission to KEY is limited. If the program is full there is a waiting list. Students who meet more than one of the criteria mentioned above will have priority. However, the most important qualification is the desire to join KEY!

KEY is now hiring tutors (all subjects). Call Bob, ext. 6604.

KEY Services

Semesters from page 4

down cycles as a major drain of people's energy. Registration, Financial Aid and Housing, while running smoother than they have in recent years, sometimes cause undue stress for both students and faculty. Switching to semesters would decrease the number of times the system would have to cycle through, easing stress (and providing a better learning environment) for all.

The board of trustees will hear the President's recommendation on Wednesday, Oct. 12 at their formal

meeting. On Tuesday, Oct. 11 at 4:30 p.m. a public hearing will be held for interested community members to share their views with the board. Jervis is recommending that everyone attend.

"It'll work, I have no question in my mind," Jervis says of the success of the conversion. While Jervis wholeheartedly supports the switch to semesters, she is trying not to overstate the issue. She says, "If the board decides not to [change to an early semester calendar], then it's not the end of the world."

OUR ADS NEED YOUR HELP

EVERY ADVERTISEMENT IN THIS PAPER MUST BE PROOFED FOR SPELLING AND INFORMATIONAL ERRORS BEFORE PUBLICATION.

IF YOU ARE MACINTOSH LITERATE, AVAILABLE MONDAY AND TUESDAY MORNINGS AND HAVE EXPERIENCE IN GRAPHIC DESIGN, THIS JOB IS FOR YOU!

DEADLINE FOR APPLICATIONS
October 3, 1994

PICK UP APPLICATIONS IN CAB 316 OR CONTACT JULIE CROSSLAND AT EXT. 6854

Welcome Back Students!

Come visit the **Olympia Food Co-op**, the city's member-owned natural foods grocery. We've been a part of the Evergreen Experience for nearly twenty years.

You'll find everything you need to set up your college kitchen at the Food Co-op:

Organic and natural whole foods, bulk and packaged • eco-friendly cleaning and body care products • housewares • books and magazines • fresh whole grain breads • snacks • salad bar

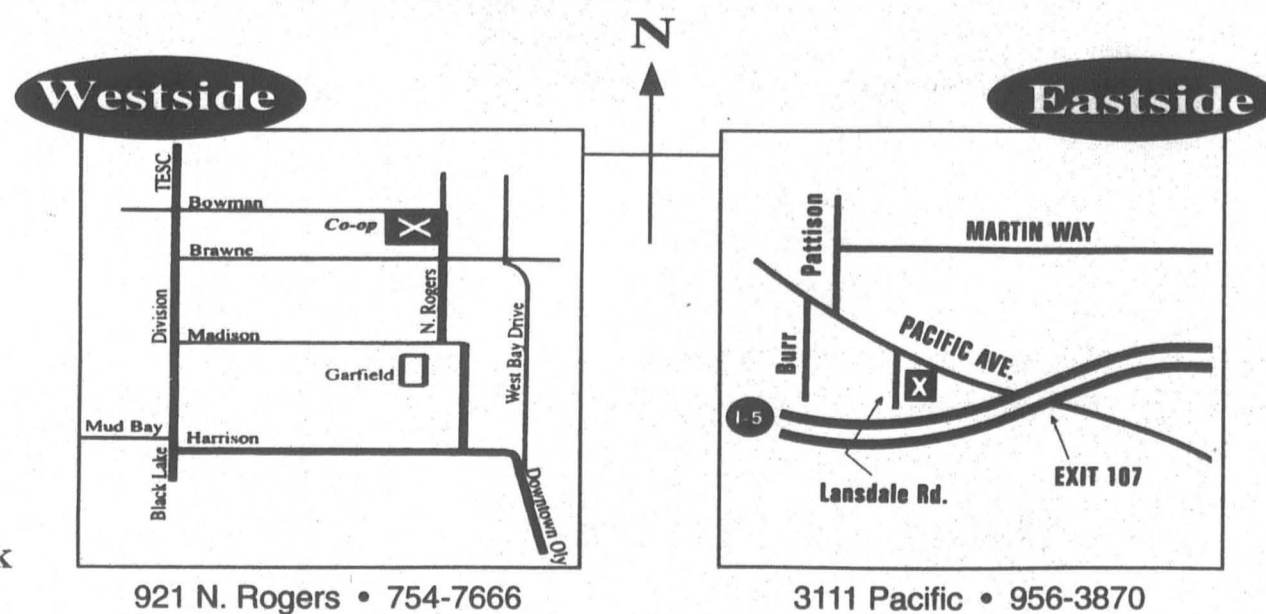
More time than money? Cut your food budget by volunteering!

Olympia Food Co-op



Two convenient locations

Seven days a week



Whether you're looking for Art supplies, Books - yeah, Computer supplies, Drawing paper, you need it ...

... we have it ...

Imported & domestic candy, Journals & newspapers, Keychains, Lots of magazines, Macintosh systems, Drawing paper, Evergreen apparel, Fax, Geoduck gifts & accessories, Helpful, friendly service, Imported & domestic candy, Quality film processing, Relaxing nature CD's, Smokes, Toothpaste, Non-prescription pharmaceuticals, Works of greener alumni, Xacto knives, Yardsticks, Zany comics, and oh so much more ...

The Evergreen State College Bookstore

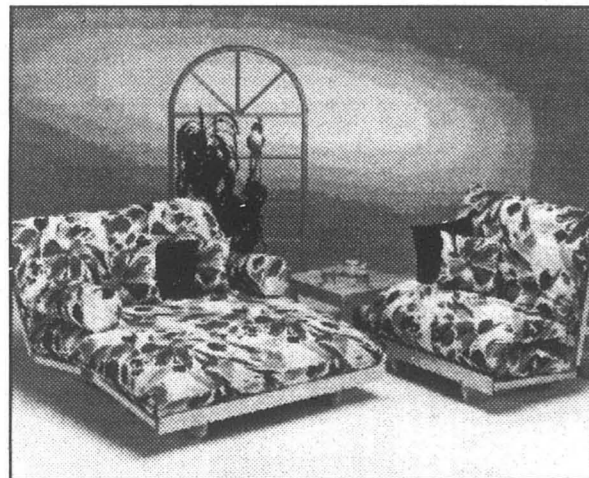
Hours:
Mon.-Thu. 8:30-6
Fri. 8:30-5
Sat. 11:30-3

And visit *The Branch* in the Community Center for living essentials and yummy food, featuring an especially wide selection of ice cream. Open 7 days a week, 3-11 pm.

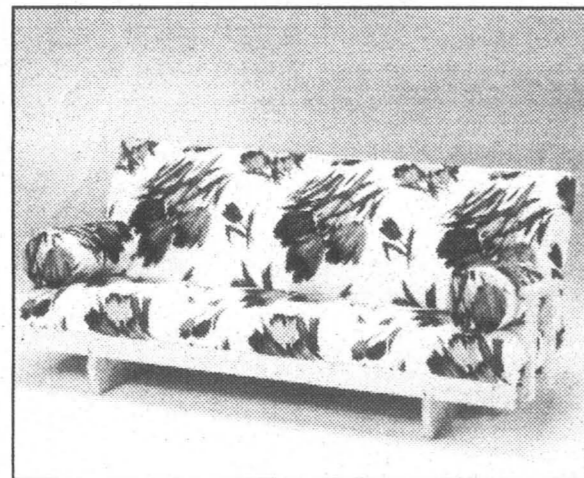
STUDENT SPECIAL!

YOUR CHOICE...

3 FRAMES - \$99



Studio (Double)



Samurai (Double)



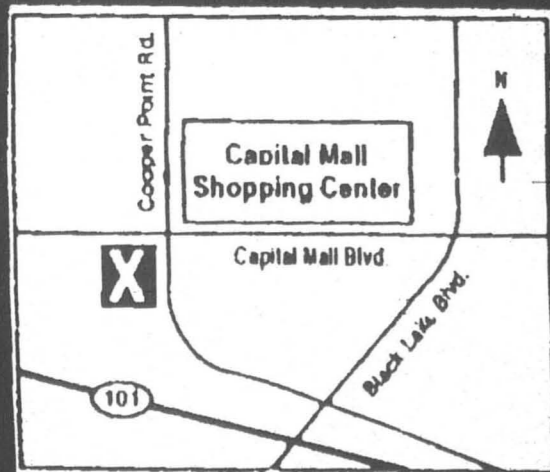
Basic (Double)

1. **LAY AWAY PLANS**

2. **STUDENT DISCOUNTS**

3. **SPECIAL FINANCING**

FUTON OF NORTH AMERICA



WASHINGTON'S LOWEST PRICE GUARANTEED.

OLYMPIA

ACROSS FROM TOYS 'R' US

943-7486

Join the CPJ in commemorating Banned Books Week

To commemorate Banned Books Week (Sept. 29, to Oct. 5) the Washington Coalition Against Censorship provided this crossword puzzle to test your knowledge on censorship in the United States. We at the CPJ encourage you to exercise your free speech rights and fight against all forms of censorship.

It's Been Challenged

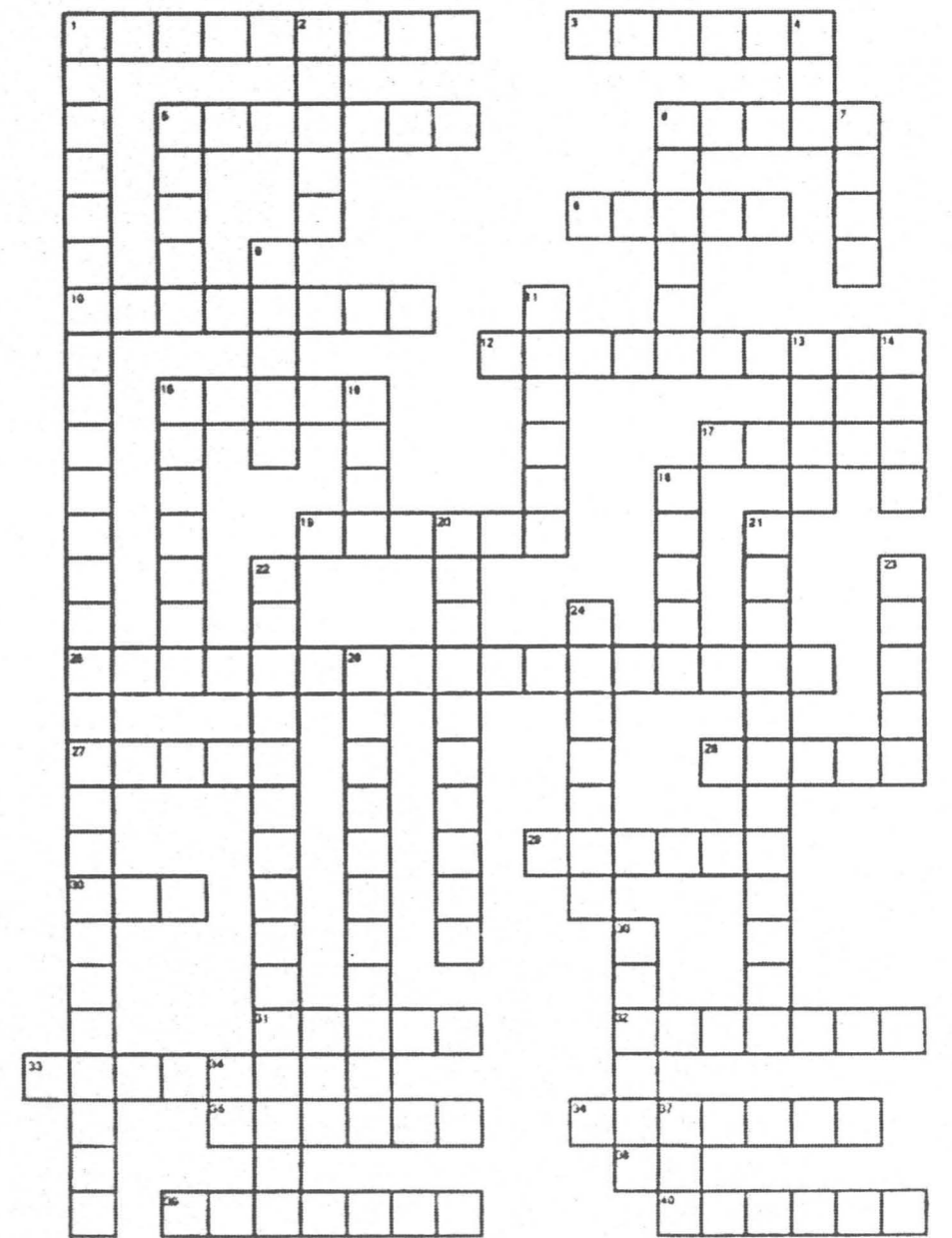
ACROSS

- The Diary of _____, a story about Jewish families in hiding during WW II
- A novel by S down
- James and the Giant _____ by Roald Dahl
- The oldest of the challenged books in this puzzle
- _____ at the Foot of the Bed
- The _____ Goats Gruff, a famous folk tale
- _____ Looking at You, an award-winning program about drugs and alcohol
- One of the qualities that many challengers don't like
- Another work by one of the most challenged of children's authors
- Some fearful adults put diapers on the main character in this book
- A slippery, slimy garden pest as well as the title of a challenged picture book
- One of a kind old tale that kids love
- One of the most famous writers and illustrators of children's books as well as the set designer for the Nutcracker Suite in Seattle, Maurice _____
- I'm _____ at You (shame! no anger allowed)
- How the Leopard Got His _____, a traditional myth
- _____ Boys and Ghostly Girls
- _____ Seed, challenged because children succeeded at a task even though _____ adults said no
- _____ and Winnie Mandela, a book about a South African couple fighting _____ against apartheid
- The Rabbit's _____
- ("_____ what?" a challenging question)
- A kind of story that challengers oppose, saying, "Stick to what's real"
- A comic book character as well as the hero in many jungle stories

DOWN

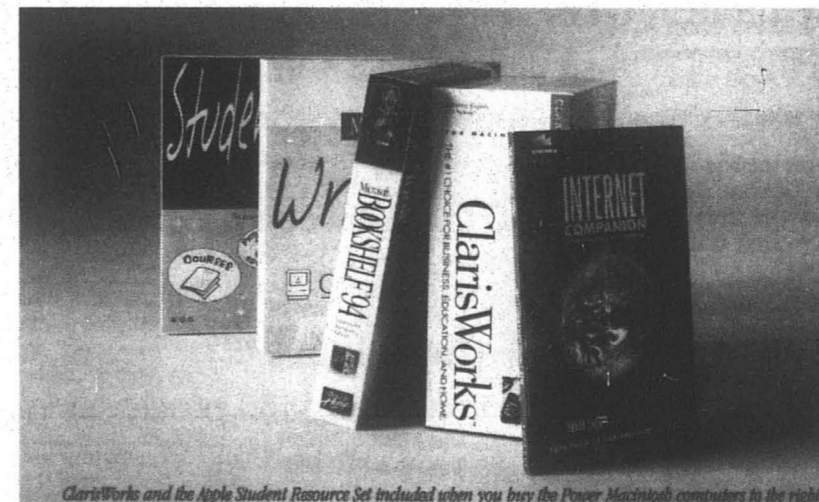
- The title of a frequently challenged book by S down
- _____ Hood, the hero of Sherwood Forest
- (the abbreviation for doctor)
- The most frequently challenged children's author, Judy _____
- Sylvester and the Magic _____
- Little Red Riding _____
- _____ the Wild Things Are by S down
- A book about the human body
- (Lincoln _____, children's favorite for building cabins)
- (Mister _____, a symbol to warn against poisons)
- _____ the Spy
- _____ Swell Pig
- A Light in the _____ by S down
- _____ Poems to Trouble Your Sleep
- Where the _____, another by S down
- A frequently challenged verse writer whose humor appeals
- The Great _____ Hopkins
- These should not appear in children's books according to challengers
- A Language Arts textbook series frequently challenged
- Oh, dear, how could those animals say and do those human things in these _____ stories?
- (The opposite of off)
- (What we all put over our _____)

With the exception of clues in parentheses, all of the answers in this puzzle are titles, authors, topics, or kinds of literature that have been challenged by those who feel that no young people should read, see or hear certain things. Answers provided next week.
©Sandra A. Lyon



We've just developed a way to make Power Macintosh even more powerful.

(Buy one now, and we'll throw in all this software to help you power through college.)



ClarisWorks and the Apple Student Resource Set included when you buy the Power Macintosh computer to the right.



Power Macintosh 7100/66 8/250, Macintosh Color Display, AppleDesign™ Keyboard and mouse. Only \$2,299.00.

Power Macintosh 7100/66 8/250 with CD-ROM, Apple™ Multiple Scan 13" Display, AppleDesign™ Keyboard and mouse. Only \$2,539.00.

Not only is the world's fastest Macintosh® computer available at special low student prices, but now it includes a student software set available only from Apple. For a limited time, buy a select Power Macintosh® and you get software that helps you through every aspect of writing papers, a personal organizer/calendar created for your student lifestyle and the Internet Companion to help you tap into on-line research resources. Plus you'll get ClarisWorks, an integrated

package with a word processor, database, spreadsheet and more. Buy a select Power Mac® with CD-ROM, and you'll also get a multimedia library of essential reference tools. It all comes with Power Macintosh — the computer that grows with you from college to the professional world. And now, with an Apple Computer Loan, it's easier than ever to own one. It's the power every student needs. The power to be your best! Apple

POWER through.



Bookstore

The Evergreen State College
Olympia, Washington 98505

Bookstore Hours: Mon-Thurs 8:30-6, Fri 8:30-5, Sat 11-3

*Prices are subject to change without notice and do not reflect sales tax.

Congress shall make no law respecting an establishment of religion, or prohibiting the free exercise thereof, or abridging the freedom of speech, or the right of the people to assemble, and to petition the government for a redress of grievances.

■ National Issues

Writer riled by the media's vilification of Islam

by Ethan Espie
CPJ Contributor

I am getting rather disturbed at how a lot of people at this school, and in this society in general, seem to view the Islamic world. Often, when discussing religion and the topic of Islam comes up, I tend to hear things like, "Muslims? I've heard some kinda bad things about them. Seems like they're pretty militant. Also, seems like they treat women pretty badly; they make them wear veils, and they wont let them leave the house by themselves, blah blah blah."

In particular, Islam's treatment of women seems to be very dominant in many peoples' minds. Granted, Islam is a very patriarchal religion. But guess what else, my friends? Christianity is patriarchal. Judaism is patriarchal. Hinduism, that religion with all those beautiful gods and goddesses, believe it or not, very patriarchal! And sure, Islam is probably the most patriarchal, but the margin isn't as great as some would have us believe.

I recall watching a segment on one of those superficial "news" shows like 20/20 or 60 Minutes about Islamic culture, which made a point of continually emphasizing its patriarchal customs, especially the use of veils.

Also, I once listened to a rather conservative radio talk show about Islam. In addition to vilifying them for their patriarchal customs, the commentator was saying that, despite the fact that the cold war is over, we need to keep building up our forces as a deterrent against the militaristic threat of

Islamic fundamentalism.

The thing is, I feel that the American news media (which is controlled largely by Jews and Christians, or at least those of Judeo-Christian origins) has virtually blackballed Islam because of two issues—patriarchy and militarism—which they often falsely portray as being integral aspects of all Islamic communities. What all this amounts to is what I'd like to call "institutionalized escapism": basically, diverting peoples' attention towards the problems of another group or society to distract them from the problems within their own group/society.

Remember Ronald Reagan's endless rantings and ravings about the "Evil Empire" we needed to protect ourselves from? Need I say more?

Even if Islam happens to be (by a small margin) the most patriarchal religion, it doesn't excuse the centuries of patriarchy that have existed in America and the other non-Islamic parts of the world. Just because Islam is militant and advocates violence in the name of Allah doesn't excuse the countless wars

The Evergreen Social Contract
Members of the community must exercise the rights accorded them to voice their opinions with respect to basic matters of policy and other issues. The Evergreen community will support the right of its members, individually or in groups, to express ideas, judgements, and opinions in speech or writings.

And sure, Islam is probably the most patriarchal [religion], but the margin isn't as great as some would have us believe.

which have been waged for the sake of other religions, especially Christianity.

One reason I have respect for Islam and hate to see it so singled out for vilification is that it has done great things for many of America's poor urban communities. The Nation of Islam (among other Muslim sects) have demonstrated crime-fighting abilities which often put America's corrupt urban police forces to shame. They have helped thousands of Black Americans get in touch with their history and eth-nic heritage. Furthermore, in an ethnic group marked by extremely high rates of (unintentional)

single-mother households, they have initiated a renewed sense of family and community values.

It should be noted that family values and the importance of family harmony are very integral parts of Islamic tradition. Despite the fact that the Koran and other Islamic scriptures teach women to obey their husbands, in no way do they advocate the intensely patriarchal customs which have evolved in many modern Islamic countries. The Koran teaches men to

hold deep, spiritual respect for women; there's an ancient Islamic proverb/saying (which all too many modern Muslim communities ignore) that says, "A nation can rise no higher than its woman."

Let us remember that what a religion preaches is often not what it ends up practicing. One of the most famous of the Ten Commandments (made even more famous in recent decades by the pro-life movement) says, "Thou shall not kill." Now, we all know that Christians and Jews have broken that one countless times! So, if you're going to point a finger, please remember that it shouldn't just be directed at Islam; please remember that many other forms of organized spirituality are equally as malevolent.

Throughout the past several centuries, organized religion has been one of the greatest causes of warfare and other forms of violence, in almost every corner of our tiny planet. Even in non-violent contexts, it has caused countless forms of unnecessary suffering and repression; I can't even begin to count how many people I've known who can trace their emotional/psychological/sexual problems to their Roman Catholic upbringings. I would say that Catholicism and fundamentalist Islam are a pretty close match for the title of "Dogmatic, Manipulative Religion Number One."

For further reading on the topic of Islam, I highly recommend the March/April 1994 issue of *Utne Reader*, which has a series of good articles on this religion, particularly involving the gross misconceptions surrounding it.

Student Governance Opportunities

A number of Disappearing Task Forces (DTF) and Committees are seeking student members. Student input is critical to the functioning of the College, and serving on a committee or DTF will provide you with opportunities to influence College policy and learn more about the College. The following groups are seeking student members.

- 1. Student Conduct Code Hearing Board (six students):** Members of the Student Conduct Code Hearing Board share responsibility for determining the facts associated with alleged violations of the Student Conduct Code and initiate sanctions when appropriate.
- 2. Long Range Curriculum DTF:** The Long Range Curriculum DTF is conducting a comprehensive review of Evergreen's curriculum. Six students serve on the Long Range Curriculum DTF. Subcommittees will be formed to review more specific issues associated with the curriculum, and these subcommittees will be seeking student members.
- 3. Faculty Reduction in Force DTF (two students):** Members of this DTF are considering the conditions and processes that result in the reduction of faculty positions.
- 4. Infraction Review Committee (two students who are compensated):** The Infraction Review Committee hears appeals of parking violations.
- 5. Health and Safety Committee (two students):** The mission of the Health and Safety Committee is advocacy of a safe and healthy environment for the Evergreen community.

For further information about these governance opportunities or to obtain an application please contact the Office of Vice-President for Student Affairs, 866-6000 ext. 6296, Room L3236.

Constitution of the State of Washington
Article 1 § 5 FREEDOM OF SPEECH
Every person may freely speak, write and publish on all subjects, being responsible for the abuse of that right.

■ Olympia Community

Workshop held to discuss poverty and environment

by Gretchen Stangl-Charlton
CPJ Contributor

Drawing the connections between poverty and the environment, population issues and the status of women, and between domestic and global poverty will be the purpose of a workshop to be held on Saturday, Oct. 1 from 9 a.m. to 2 p.m. at the Olympia Center. Speakers, including Rep. Jolene Unsoeld, will invite discussion on these issues and on sustainable, effective poverty eradication measures. Participants will have the opportunity to discuss their thoughts and ideas, and to learn about and create actions they can take locally.

The workshop is being organized by the Olympia Chapter of RESULTS, a grassroots lobby generating the political will to end severe poverty and hunger, in association with Zero Population Growth, the Sustainable Community Roundtable, and Bread for the World.

The workshop is being held on the fourth anniversary of the World Summit for Children, a gathering of 71 world leaders which produced a blueprint for ending the worst aspects of poverty globally.

The promises made by the U.S. and other countries included reducing child malnutrition by one-half, child mortality by one-third, and providing education, family planning, clean water and safe sanitation for all. The workshop will, in part, focus on how meeting the basic needs of children and mothers is an essential step toward solving the problems of population growth and environmental degradation.

The program of this workshop will feature faculty member Jose Suarez-Torres of The Evergreen State College and Lynn Walker-

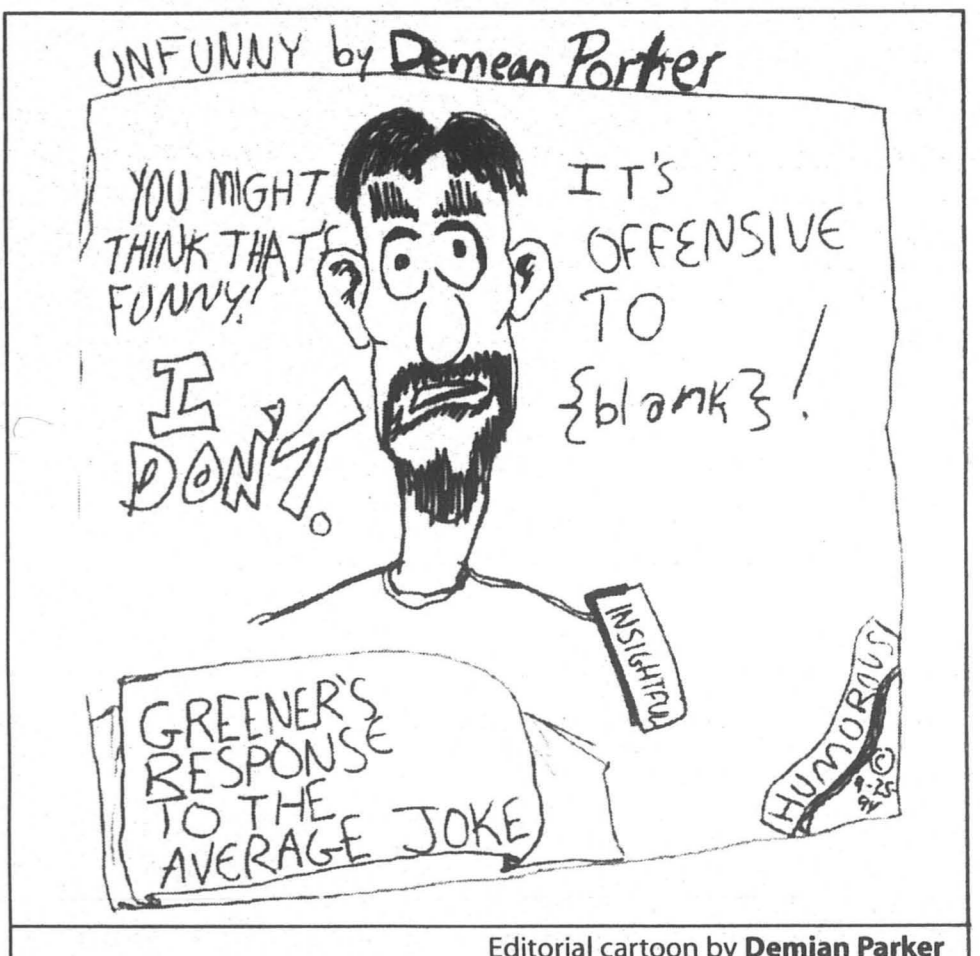
McMullen of RESULTS. They will lead a discussion on the fundamental connection between poverty measures and environmental, population and sustainability concerns. Aspects of these issues and examples of successful, cost-effective poverty reduction programs will be highlighted by high school journalism and debate students. An introduction to micro-enterprise will be given by a participant and recipient in a local micro-enterprise program. Workshop participants will discuss these issues in smaller groups, focusing on ideas and actions.

This will be followed by a "Global Lunch." Participants will be offered one of several different meals reflecting the different economic divisions of worlds population. The last featured speaker will be Rep. Jolene Unsoeld, who has been a strong supporter of population and poverty reduction measures in the House of Representatives. She will speak and respond to questions from participants.

The global connections we all share are both spiritual and practical, and profoundly tie those of us in South Puget Sound to those of us in Sri Lanka, the Sudan and elsewhere. Our economy, policies, actions and inactions have powerful impacts on our own and other countries low income populations. Learning how our foreign aid (less than one percent of our national budget) is being spent, looking at the role of the World Bank and looking at the measures low income people are taking to end their own poverty are the first steps in making it different.

A German philosopher and scientist said, "Powerlessness is the most dangerous illusion a person can have." All are invited to come and taste their power. For further information, please contact Carolyn Prouty at 482-4657, or Pam Sinclair-Nixon at 866-2947.

Congress shall make no law respecting an establishment of religion, or prohibiting the free exercise thereof, or abridging the freedom of speech, or the right of the people to assemble, and to petition the government for a redress of grievances.



Editorial cartoon by Demian Parker

■ Evergreen Community

S&A Board Coordinator calls for board members

by Dante Salvatierra
S&A Board Coordinator

This year should be an especially busy year for the Services and Activities Board. The 1994-1995 school year marks the end of a biennial budgetary cycle which means that the large budget student funded services and organizations will be reviewed and re-funded for the next two school years. In other words, radio KAOS, the Child Care Center, the Recreation Center, this glorious rag called the *Cooper Point Journal* and the S&A Office itself will be asking for a portion of the S&A fees.

Along with these, "Tier One" budgets, the annual allocations of other student groups will also be reviewed. These, "Tier Two" budget groups include the Women's Center, the Evergreen Political Information Center, the Evergreen Queer Alliance, Asian Students in Alliance, the Camarilla and many others.

The Spring Quarter budget process is rarely without some controversy. During the last biennial review in 1993 a surprisingly low KAOS budget allocation created a rush within their organization to find the extra funds through an exceptionally successful pledge drive. Apparently the S&A Board at the time felt that the radio station lacked the student

oriented services that student funds should pay for.

This year the recent financial problems of the CRC and the high cost of Child Care will also become issues for the Board. The Board will be having a comprehensive student survey and will possibly be looking at an Intercity Transit bus subsidy program where students will be able to ride for free or at a discount rate.

The members of this year's Board is still undetermined. There are nine positions open and ready for any TESC student. In order to encourage those from all economic strata to apply, a small stipend is paid to each Board member. The stipend amounts to about two to four hours a week at minimum wage.

There are no qualifications necessary to be a Board member. Simply the ability to commit the time necessary, to communicate an opinion and to decide matters on a consensus basis are the only things a member needs to be successful. Being the closest thing to a student council at Evergreen, the Board should be comprised of students who come from diverse cultures, backgrounds and experiences.

If someone is interested in applying they may fill out an application at the front desk in CAB 320. The deadline is Oct. 14 at 5 p.m.

Cooper Point Journal

Volunteer

Comics Page Editor: Brian Zastoupil
News Briefs Editor: Dawn Hanson
Security Blotter: Matthew Kweskin
Layout Assistants: Natalie Cartwright, Aimee Baldoz, Lisa Corvine, Nathan Woods, Teri Tada
Rendermack: Aubrey Pullman

Editorial

Editor-in-Chief: Naomi Ishisaka
Managing Editor: Pat Castaldo
Interim Layout Editor: Carson Strege
Interim Arts & Entertainment Editor: Demian A. Parker
Interim Photo Editor: Will Ward
Interim Copy Editor/Typist: Laurel Rosen

Business

Business Manager: Julie Crossland
Assistant Business Manager: Graham White
Ad Sales Representative: Tony Pelaez
Ad Layout: Guido Blat, Phan Nguyen
Ad Proofer: Ad Staff
Circulation Manager: Melanie Strong
Interim Distribution Manager: Catlin McCracken
Advisor: Dianne Conrad

User's Guide

The *Cooper Point Journal* exists to facilitate communication of events, ideas, movements and surrounding communities. To portray accurately our community, the paper strives to publish material from anyone willing to work with us. Graphics and articles published in the *Cooper Point Journal* are the opinions of the author or artists and do not

necessarily reflect the opinions of our staff. Submissions deadline is Monday Noon. We will try to publish material submitted the following Thursday. However, space and editing constraints may delay publication. Submission deadline for Comics and Calendar items is Friday at noon.

All submissions are subject to editing. Editing will attempt to clarify material, not change its meaning. If possible, we will consult the writer about substantive changes. Editing will also modify submissions to fit within the parameters of the *CPJ* style guide. The style guide is available in CAB 316.

Written submissions should be produced in either WordPerfect or Microsoft Word and brought in on diskette. The author's name and telephone should be on the diskette. Disks are available for pickup after publication.

Everyone is invited to attend *CPJ* weekly meetings on Mondays at 4 p.m., and to stop by CAB 316 with questions or call 866-6000 x6213.

The *CPJ* publishes weekly throughout the academic year. Subscriptions are \$21 (third class) and \$33 (first class). Subscriptions are valid for one calendar year. Send payment with mailing address to the *CPJ*, Attn: Julie Crossland.

Advertising

For information, rates or to place display and classified advertisements, contact 866-6000 x6054. Deadlines are 3 p.m. Fridays to reserve display space for the coming issue and 5 p.m. Mondays to submit a classified ad.

How to Respond

Our Forum and Response Pages exists to encourage robust public debate. Forum and Response submission represent the sole opinions of the authors and are not endorsed by the CPJ staff.

- Response letters must be 450 words or less
- Forum articles must be 600 words or less.

Please save in WordPerfect and bring your submission to CAB 316 on disk. Call us at 866-6000 x6213 if you have any questions

The staff of Cooper's Glen Apartments would like to wish all the new and returning Evergreen students a happy and successful academic year.

COOPER'S GLEN
APARTMENTS

3138 Overhulse Rd. NW 866-8181



WELCOME TO THE NEW CPJ SPORTS PAGE!

For you Geoduck sports fans, the CPJ now offers periodic sports coverage. If there is something you'd like to see in the sports page, come to our story meetings in **CAB 316 Thursday at 4:00** and talk to our very own Will Ward.

Rugby's Back

Both the women's and men's teams are back out on the fields gearing up for the fall season. New coaching, new talent and a lot of dedication are combining to produce a positive season for both teams. The Hellcatz, Evergreen's women's team, are off to Seattle this weekend for their first game of the season. They will go up against Western Washington University and the Breakers in a round robin in which all teams will be sided against one another.

The men's side hits the pitch Oct. 8 for their season opener. They will host a scrimmage against Western on the main fields.

Over the summer, the men's team had a successful summer 7s season (seven people a side rather than the usual 15). The team's highlights included a sweep of the first annual Super Saturday 7s, rugby under lights in Vegas and capturing the title of the first annual Celtic 7s Tournament.



Evergreen on the attack at Clarke County Celtic 7s Tournament during the summer 7s season.

—Photo and text by Will Ward

Sperm donors needed in the infertility program at Olympia Womens Health. **\$30 for every semen sample.**

For detailed information, please call: 786-1517

Ask for Dr. Cai.

OLYMPIA WOMENS HEALTH
403-E Black Hills Lane SW

Cheap. Young. Real Chocolate.

Located outside of Thekla, across from Radiance...

Velocity Cafe

6:30am - 5:30pm
Monday through Saturday

Mention this ad for 25¢ off.

Real Whipped Cream. Locally owned. Hip. Outside: Fun, Friendly, Fast, Special. Completely Accepting Hang-out.

CLANCY'S

COLUMBIA STREET PUBLIC HOUSE
EST. 1988

Great Food!
Great Atmosphere!

Happy Hour SPECIAL!
All Micro's \$1.50 on tap
Mon-Fri 4-6pm
943-5575
4th Ave. at Columbia

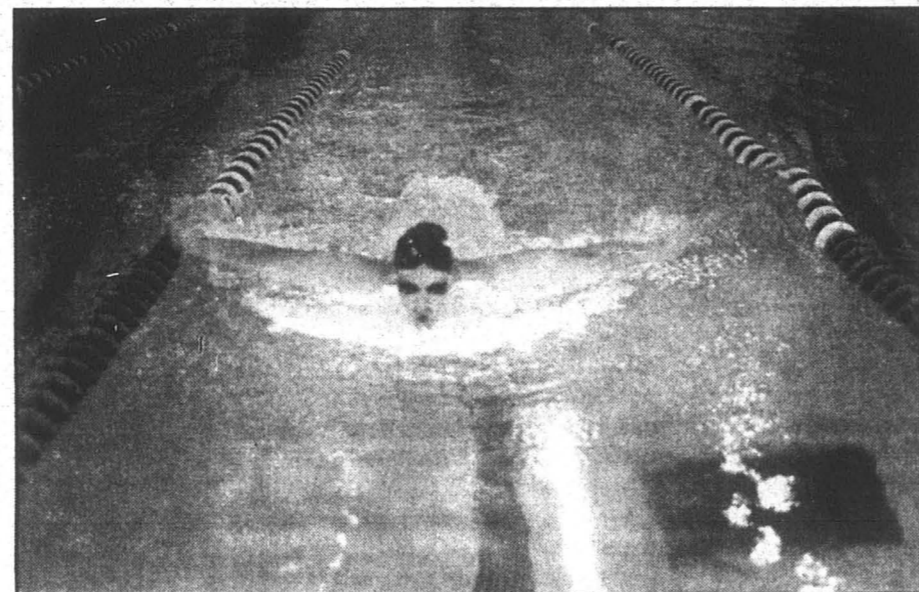


Saras Kitchen

"Naturally Wholesome Northwest Fare"
Vegetarian, Vegan, & Seafoods

At the Olympia Farmers' Market during Market hours and 113 4th Avenue West
Tuesday-Friday 11AM-9PM
Saturday 9AM-9PM
(206)705-3645

Olympic hopeful swims at TESC



You may not have seen Mike Johnson around before, but he has been training in our pool for the 1996 Olympic tryouts. Twenty-four year old Johnson has been swimming for 12 years. He was a six time All American in high school and a three time NCAA swimmer in college. This awesome swimmer goes 100 yards butterfly in 42.2 seconds (He could give Superman a run for his money!).

His coach, Mike Burton, is proud of his most common saying, "Do what I say and do it hard!" The longest break from swimming Johnson has ever taken was a year off before resuming again last spring.

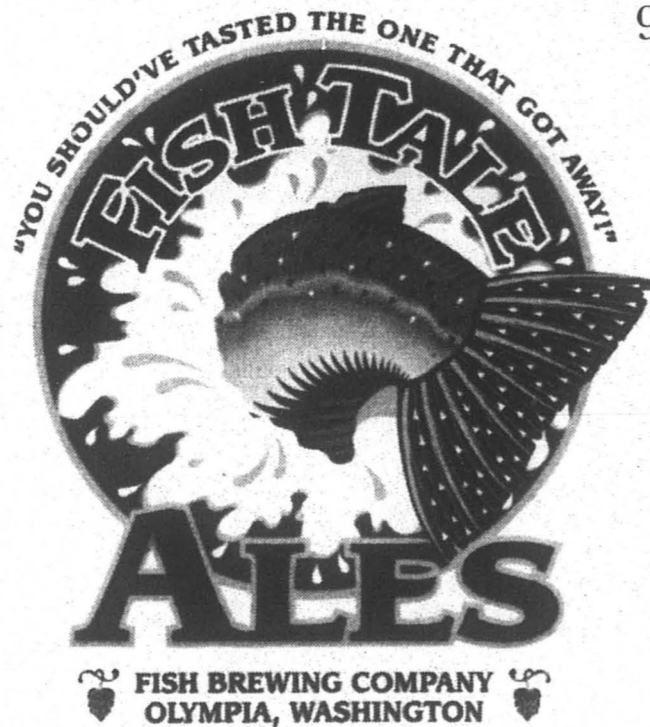
After the Olympics, Johnson plans to go back to school or coach here in Washington.

If you want to catch a glimpse of Olympic hopeful Mike Johnson he will be appearing at the CRC at 5:30 a.m. You got to wake up pretty early in the morning to reach for the gold. Good Luck!

—Photo and text by Mason McGraw

FISH BOWL PUB

515 Jefferson Street SE, Downtown Olympia
943-6480



Open:

Monday through Saturday

Don't forget to tuck your ID under a fin.

11 a.m. to Midnight

Now serving lunch, too!

New expanded menu!

Food available until last call!

FISH BOWL PUB Events

- Saturday, October 1st - First Anniversary \$1.50 Pints 11am - Midnight
- Saturday, October 5th - Acoustic Blues Guitarist Bill Lenker 9pm - Midnight
- Saturday, October 22nd - Acoustic Rock AKA ALES 9pm - Midnight
- Greatful Dead Nite - Every Wednesday 8pm - Midnight

Arts and Entertainment

Liz Phair sings of her Whip Smart life

by Pat Castaldo

Liz Phair is singing to me. Her 1993 release *Exile in Guyville* begins, "I bet you fall in bed too easily." She sings of sex, relationships and life in a matter that's all too honest and a little too real. Emotions swell, from overwhelming sympathy — I've felt like that, to intense anger — I've felt like that, too. You can't help but think that she's either singing right to you, or is you.

Her second album, *Whip Smart*, released this month begins "I met him at a party and he told me how to drive him home." She weaves a tale of freedom and self-confidence. She sings openly about the potential encounter, throwing in a fuck here and there. She swears not for dramaticism, but because it simply fits. People swear in real life. People say "fuck." The songs feel as if it is going somewhere, an engaging story you'd overhear from a friend at a bar, but it ends simply: "I drove him home and dropped him off, because secretly I'm timid."

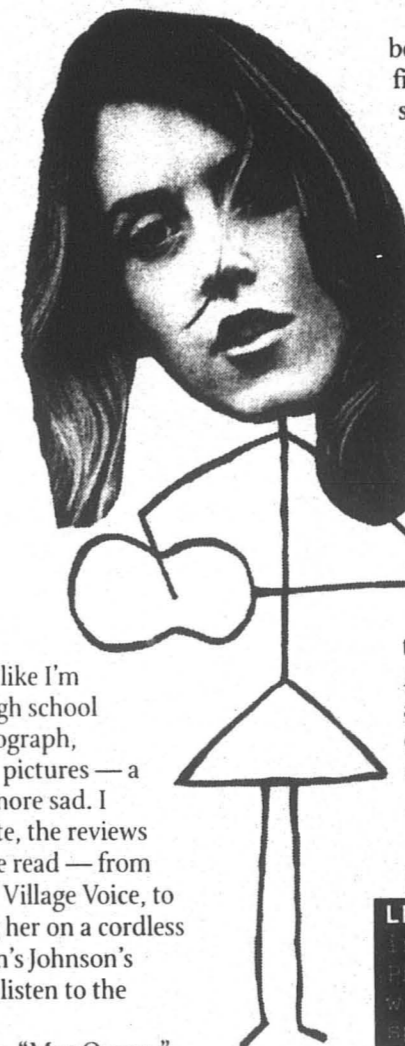
Fourteen songs roll out of Phair's sophomore attempt, a bit softer, perhaps a bit more innocent than her double-length premiere. The arrangements are much tighter, the album feels a natural progression from what the *Village Voice* named 1993 Album of the Year.

Her music is insanely personal, regardless of the truth of the stories she tells. She lies she tells *Rolling Stone*, "I tend to write more about imaginary scenarios."

The best part? It's intentional. She knows what she's doing, more than any one-song-wonder or MTV-made band could dream of. The media is abuzz over Liz Phair, she's become a commodity (she acknowledges this) and she's put herself on the market.

I peek through the liner notes of both her albums, and I feel like I'm staring at a lost high school sweetheart's photograph, maybe even prom pictures — a little guilty, a bit more sad. I forget, for a minute, the reviews and interviews I've read — from the piece(s) in the *Village Voice*, to Beck interviewing her on a cordless phone from Calvin's Johnson's front yard — and listen to the music.

The last song, "May Queen,"

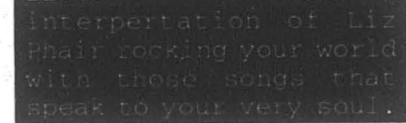


begins "Don't be fooled by him, he's fine," and it's drawn out over 30 seconds. It's easy to lose yourself in "May Queen," and hitting random on your cd player helps, bringing you back early into the album for Super Nova. Super Nova is heavy, and contains the line, "and you fuck like a volcano." Would a guy get away with singing that? I'm not sure anyone would, except Liz Phair.

Phair describes her departure from her first album best; "*Whip Smart* is something that I respect in people. It implies education through trial, an attitude I like. *Exile in Guyville* was a more sexual album. This is the opposite, an emotionally based album that ended up being more sexual."

Pat has been known to sing along with the music. Sometimes he is known to get the lyrics right.

LEFT:



body by Teresa Carmody

Sculpture: Three-man show

by Lyn Iverson

Sculpture, a three faculty man art show of Evergreen talent, will open October 6th in Library Galleries 2 and 4. A reception will be given from 4 to 7pm, and all members of the Evergreen community are encouraged to attend.

Mike Moran, a 12th year ceramics and drawing instructor, will show pieces in metal and concrete dealing with the figure, and the figure with horses. He says his work could be described as "expressionistic," dealing mostly with texture.

In combining concrete with other substances such as steel wool, cheesecloth, screen, and poultry netting, as well as by etching in the wet concrete itself, Moran creates a variety of textures in his work. For color he uses concrete colorings in a range of earth tones. Moran says he enjoys the actual creative process most of all, and is often detached enough from the final product to break it up into pieces to be used in yet another piece.

"The pleasure of doing it far surpasses the importance of the objects to me." He hopes that showing his work see **Sculpture on page 16**

Animas Trading Co.

IMPORTS FROM AROUND THE WORLD.

Wool sweaters, bedspreads, trousseau, patches, hemp stuff and more.

Great selection of Grateful Dead and Phish stuff.

202 W. 4th Avenue
Olympia, WA 98501 357-7004

Blue Heron Bakery

Welcome Back Greeners

From your local community bakery. Just minutes from TESC on Mud Bay Road.

For a variety of naturally sweetened breads, cookies & cereals:
4085 Mud Bay Rd. W.
866-2258

go · CHICK WHEELS · go

Clothing · Gifts · Accessories

412 s. WASHINGTON · DOWNTOWN · OLY

SAT OCT 15
A Benefit for Hands Off WA
Janice Friebaum, Betsy Holt, The Band Next Door
show from 6:30-9:30, \$5 sugg. donation, 100% of door proceeds to H.O.W., dancing to follow show

MON OCT 17
live music!
The Noses, Book of Lillith
show starts at 9pm, \$3 cover

WED
Hip-Hop & Soul w/DJ Kwai FREE!

THUR
More, More, More! w/DJ d'Jones \$1

FRI
A2Z w/M.C. Queen Lucky \$2

SAT
Dancing d-lite w/DJ Bruce \$2

SUN
Fun w/DJ Karl Steel FREE!

Happy Hour 6-8 daily!

Thekla
open 6pm-2am daily
116 E. 5th • Olympia
352.1855

Welcome to Olympia! We hope you feel at home here.

If you are looking for natural medicines, bulk herbs, flower essences, meditation & ceremonial supplies, books, music, candles, calendars, incense, cruelty-free body care, jewelry, gifts, come to Radiance. It's a great place to research your health alternatives, relax, or meet up with friends, too.

We look forward to meeting you!

RADIANCE
HERBS and MASSAGE
113 E. 5th, Downtown Oly 357-5250

Store Hours
M-F 10AM-8PM
Sat 10AM-6PM

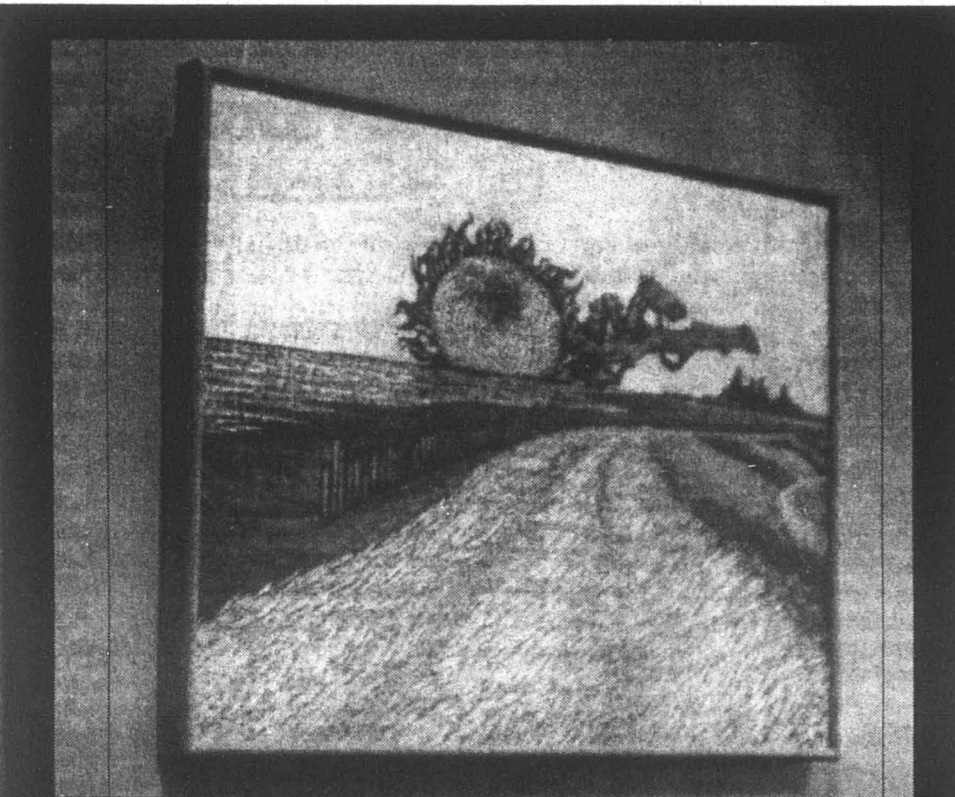
WITCHCRAFT

FIVE CORNERS
James & Daniela Staples co-owners

608 S. Columbia
Olympia, WA 98501
(206)352-4349
mon-sat 11am to 6pm

MAGICAL TOOLS, JEWELRY, ART, CANDLES, BOOKS, INFO.

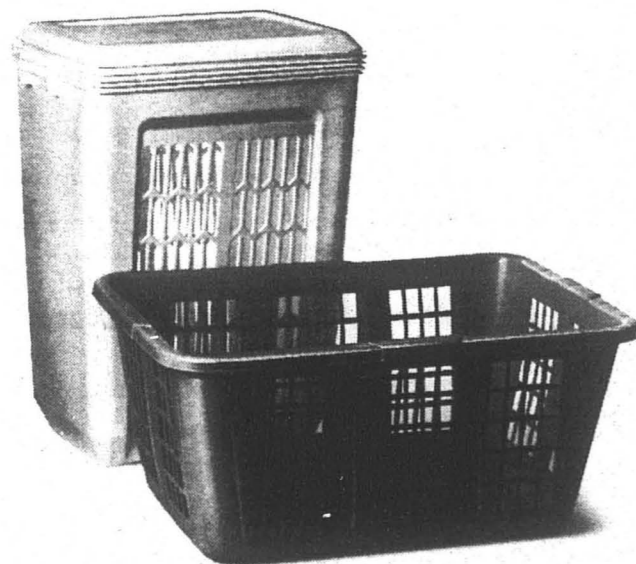
PAGANISM



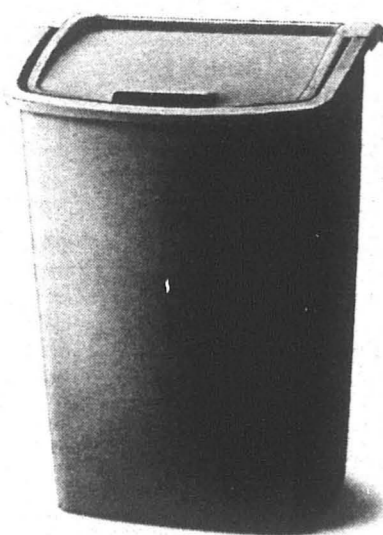
"An unusual sunflower rests on the water off the ocean beach," writes our review.

photo by Will Ward

called, had four electric washing machines which could be rented by the hour.



If you pay too much for these,



You're throwing money in here.

\$1 OFF when you buy any of these scratch-resistant, easy-to-clean Rubbermaid products: Clothes hamper, laundry basket and wastebasket in varying sizes and colors.

Style #2803, 2838, 2987, 2986, 2965, 2973
Limit one coupon per purchase.
Reproductions not accepted.
Cashier: Scan Product, Then Scan Coupon.
Use Target Coupon Key.

TARGET
EXPECT MORE. PAY LESS. 5 85239 23976

Washington Center to exhibit Language of Landscapes

by Lisa Corwine

When I offered to go write a review of *Language of Landscapes*, the exhibit in the Washington Center lobby opening October 6, the first thing I thought of was bark. Bark is good, especially in your parents front yard, as long as they put plastic underneath so the weeds won't grow through.

I was pleasantly surprised by the work of regional artists brought together by curator Jeffrey Stewart.

For the past several years Stewart has wanted to put together a show that looks at landscapes from the Northwest. He has put together this show to "reflect a lot of different aspects" of landscapes to see different ways of expressing the same thing.

Stewart says the pieces are a look at where the artist lives and "reflects on that essence not immediately obvious". Pieces from the '20s to the present are hung on the three floors of the Washington Center lobby.

"In a landscape that desperately needs color, why do flowers stay close to the ground? you meet them with surprise hidden in the pale grasses"

This poem by Robert Sund, from a collaborative piece in the show, best sums up the opposite of what this exhibit represents to me. These artists have found the character in landscapes themselves, without having to look at the obvious pretty things.

From silhouette mountains of oil in colors of yellow and red, to black and white photographs of light and textures on a rock wall, to pen and inked boat docks, and passages of literature and poetry related

"These artist have found the character in landscapes."

to landscapes, these works represent landscapes of all types from the Northwest, while bringing out the tangibility and/or color often ignored in landscapes.

The show opens up Wednesday October 6, with a reception from 5:30 to 8 pm. The Washington Center lobby is regularly open Wednesdays from noon til 2 pm.
Lisa is not with AT&T, but she does make the occasional long distance call.

INLET BOOKS
Used, rare and antique books
A Renewable Resource of the Mind
WE BUY, SELL, TRADE 357-6608
Open 10:00 to 5:30 Monday-Saturday
210 1/2 4th Ave W Downtown Olympia
Next to the Smithfield Cafe

ELECTRIC ROSE TATTOO
3115 N. CAPITOL WAY
206-786-8282
Olympia, WA 98501

POWERED BY PIZZA
Be "Powered By Pizza" and Save 10%
120 N. Pear • 943-9849

BROUGHT TO YOU BY SEA PRODUCTIONS WITH THE COOPERATION OF THE OLYMPIA FILM SOCIETY TO GO ALONG WITH ARTWALK

HELEN ZIA
AT THE CAPITOL THEATER
FRIDAY OCTOBER 7TH
AT 7PM

FOLLOWED BY THE ACADEMY AWARD NOMINATED FILM
"WHO KILLED VINCENT CHIN?"

MAKE IT A STOP ALONG ARTWALK

MAKE IT A STOP ALONG ARTWALK

Eggs: You know 'em, you love 'em, here's a way to cook 'em

by Jenny Jenkins

Eggs are good cheap protein. So, how do you cook them?

How about frying? Frying is a bit broad, so how about a specific way to fry an egg. How about Toad in the Hole? I like it, I hope you will too.

Put a good, and I stress good, frying pan on a medium heat, then put some grease (butter, margarine, oil, etc.) in it.

While the pan is heating, take a piece of bread and your average drinking glass. Take the glass and creatively press the open end into a slice of the bread so you get a circle

cut out of it (See Diagram A).

Eat the Circle.

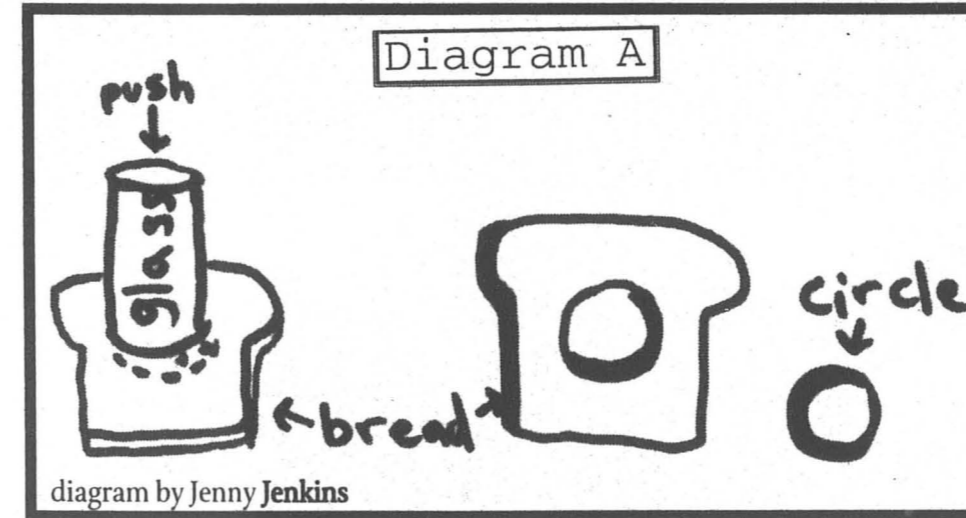
Now, lay the bread in that beautiful, heated frying pan (That is the "Hole"). Then, crack an egg into the hole you made in the bread (That is the "Toad").

At this point you have a difficult choice to make: To turn it over or not to turn it over. I personally prefer over easy, because, well, it's easy, and it's a way to make my bread get toasted on both sides. But if you like your eggs sunnyside up, that's OK too.

Watch your egg!

For Over Easy: Wait until the white looks pretty solid, but the middle is still pretty raw. In other words, wait until your egg is practically done. Now, turn it over with your handy spatula. At this point, you must let it cook upside-down for 10 to 30 seconds, depending on how done you like your eggs.

For Sunnyside Up: Put a top on the frying pan, even if it is not a perfect fit (but all good frying pans have a top that fits perfectly). Let it cook for about a minute.



Check that egg often for signs of doneness. **Signs of doneness.**

The white should be solid and the middle should be getting pinkish. You could even melt a slice of cheese on top of it if that catches your fancy.

Now, your Toad in the Hole is done. Scoop it up with that handy spatula from before and plop it right down on that plate you stole (uh, borrowed) from the Greenery last week.

Yum!

Jenny wrote this at 2 am simply because she could. And she was hungry.

Horror-Scope™

Aries the Ram—The left drawer holds the key. **Taurus the Bull**—Make some Rice-a-Roni. **Gemini the Twins**—Enjoy your new friend while you can. **Cancer the Crab**—Hold on tight. **Leo the Lion**—You will experience pain today. **Virgo the Virgin**—Shame? No, it wasn't. **Libra the Balance**—Be safe, stupid! **Scorpio the Scorpion**—Is it raining in your mind? **Sagittarius the Archer**—Shot to the heart, and you're too late. **Capricorn the Goat**—Coffee time for you should be extended. **Aquarius the Water Bearer**—Do you still feel the same way? You should. **Pisces the Fish**—Kiss, kiss Molly's lips. (Again)
—Pat Castaldo, Punk Astrologer

PRINCIPLES OF SOUND RETIREMENT INVESTING

Department of the Treasury—Internal Revenue Service
1040 U.S. Individual Income Tax
For the year Jan. 1-Dec. 31, 1992, or other tax year

Your first name and initial

If a joint return, spouse's first name and initial

Home address (number and street), if you have one

City, town or post office, state, and ZIP code

Do you want \$1 to go to this charity? If a joint return, does your spouse want \$1 to go to this charity?

UNFORTUNATELY, THIS IS WHERE PEOPLE ARE PUTTING TOO MANY RETIREMENT DOLLARS.

Every year, a lot of people make a huge mistake on their taxes. They don't take advantage of tax deferral and wind up sending Uncle Sam money they could be saving for retirement.

Fortunately, that's a mistake you can easily avoid with TIAA-CREF SRAs. SRAs not only ease your current tax-bite, they offer a remarkably easy way to build retirement income—especially for the "extras" that your regular pension and Social Security benefits may not cover. Because your contributions are made in before-tax dollars, you pay less taxes now. And since all earnings on your SRA are tax-deferred as well, the

money you don't send to Washington works even harder for you. Down the road, that can make a dramatic difference in your quality of life.

What else makes SRAs so special? A range of allocation choices—from the guaranteed security of TIAA to the diversified investment accounts of CREF's variable annuity—all backed by the nation's number one retirement system.

Why write off the chance for a more rewarding retirement? Call today and learn more about how TIAA-CREF SRAs can help you enjoy many happy returns.

Benefit now from tax deferral. Call our SRA hotline 1 800-842-2733, ext. 8016.

TIAA CREF
Ensuring the future for those who shape it.™

CREF certificates are distributed by TIAA-CREF Individual and Institutional Services. For more complete information, including charges and expenses, call 1 800-842-2733, ext. 8016 for a prospectus. Read the prospectus carefully before you invest or send money.

NEW LOCATION

THOUSAND CRANES FUTONS AND FURNITURE

Fine, locally crafted furniture... planet-friendly design solutions... certified organic futons...

416 CAPITOL WAY • OLYMPIA, WA
OPEN 7 DAYS A WEEK • (206)357-8464

OPAS
Olympia Pottery and Art Supply

We carry all your back-to-school art supplies.

Welcome back, Greeners!
10% discount to students

1822 W. Harrison
Mon-Fri 9-6 • Sat 10-5
943-5332

Sculpture from page 13 here on campus "will provide an educational function... students will see what can be done with what it is I show them."
Paul Gralen, Performing Arts Technical Director, will have between 35 and 40 pieces to show, done in steel or a combination of steel and concrete. His pieces will range from a smaller table top variety 16-18 inches in height, to large freestanding sculptures up to eight feet in height/width, weighing up to 300 pounds. Gralen takes pride in reusing objects found in junkyards to create his

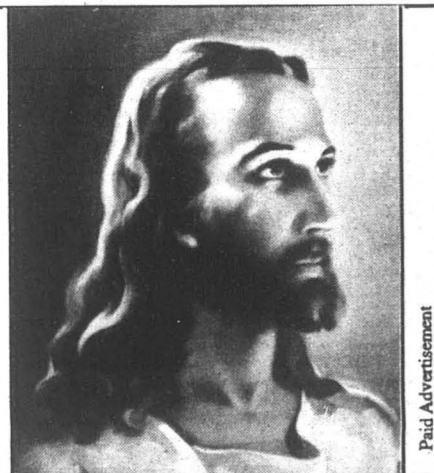
pieces. An example is the 11 foot tree he designed for the Harlequin Theater's production of *Waiting for Godot* last year using welded together muffler pipes (he decided against showing that at this show due to its size). His wall pieces are being labeled sculpture or painting in that they are often painted with oil stick and are mounted on walls, yet some have a great more depth/dimension to them, actually projecting several inches from the wall.
"I would hope that the students see it and get inspired and realize that they can do

that too if they get a certain amount of skill, which isn't anything more than applying yourself to learning," says Gralen.
Terry Wooldridge works in the theater department designing and constructing sets for drama productions. He will be showing 20 or so paintings that "walk a fine line between architectural painting and painterly sculpture." Wooldridge works in water based mixed media, although he sometimes uses oilbased products for coloring.
He describes his work as "contemporary abstract work ... that has, a

lot of different ways to be viewed or perceived, and it should be. My message is to read between the lines ... It's a tactile experience." Wooldridge encourages students to give the exhibit some time.
"Don't just rush through in between classes."
Sculpture runs Oct. 6 to 29 in Library Galleries 2 and 4. Gallery 2 hours are: Mon. thru Thurs. 8:45am to 10pm Fri., Sat. & Sun. 10:30am-6pm. Gallery 4 hours are: Mon. to Fri. Noon to 5pm Weekends 1 to 5pm.
Lyn had some trouble with the computers, but that's all sorted out now.

The WILD SIDE NATURE STORE

MON-SAT 10:00-5:30
Field Guides - Checklists - Recordings
For Your Own Backyard
or Around the World
507 Washington Street SE
Downtown Olympia
206-754-8666



"Bear one another's burdens, and so fulfill the law of Christ."
- Galatians 6:2

Rainy Day RECORD CO



FANTASTIC SELECTION OF RECORDS, TAPES, COMPACT DISCS & INDEPENDENT RELEASES

SPECIAL ORDERS WELCOME



\$1.00 OFF
our regular low price on any NEW ALBUM, CASSETTE or CD in stock (\$6.98 List or Higher)
Expires October 9, 1994

357-4755
WESTSIDE CENTER
DIVISION & HARRISON

ATTENTION STUDENTS:

Now, You Can Enjoy The Benefits of Membership



Huyen Nguyen, student and WSECU member, naturally.

As a Full-Time Student of The Evergreen State College, You Can Now Become a Member of Washington State Employees Credit Union.

We offer the convenience of 24-hour access to your money, two branches close by, and, of course, great checking. So stop by your local WSECU branch and find out why we're your natural financial resource.

Visa: With a low 10.9% APR, no-fee cash advances, and a 25-day grace period, our "Right Card" Visa is at the top of its class. And if you sign up for our Visa before January, we'll pay the low \$10 annual fee for your first year.

Low-Fee Checking: Get unlimited check writing for just three bucks a month; or, maintain a \$300 balance and earn interest on your money and pay no monthly service charge.

Cash+Check Card: With this smart card, you can access your checking account without writing a check. Use it like a check anywhere you see the Visa logo - with no interest and no fees - or, use it to get cash at cash machines around the corner or around the world.



Olympia Branch • 400 E Union • 943-7911
Lacey Branch • 4325 - 6th Ave SE • 456-4414

Washington State Never Looked So Good!

Phat Trax brings you the roots of modern music

by Naomi Ishisaka

If you were too old to remember some of the classic R&B hits that became the base for much of the rap we hear today, Rhino Records has once again put together a compilation for you.

The label that brought us "Street Jams: Hip Hop From the Top," Vol. 1-4, "Street Jams: Electric Funk," Vol. 1-4 and my personal favorite "Soul Train: 20th Anniversary" Parts 1-3, has now created a brand new series honoring the early work of folks like Cameo who in words of the album liner used to be, "...the size of a small tribe." Very different from the black rubber clad trio of my youth.

Although I was unfamiliar with most of the tracks on Volume 4, the other four albums featured such favorites as George Clinton's Atomic Dog. A quick favorite from Volume 4 at our apartment was "She's a Bad Mama Jama" by Carl

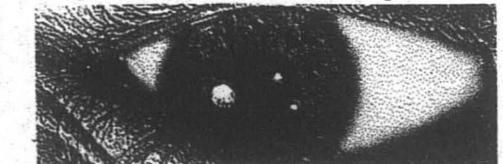
Carlton for its eloquent use of lyrics and its tricky beat.

Most of the music was created in the early 80's and most appeared in the R&B charts Top Ten, notables being "Mama Used to Say," by Junior and "Mr. Groove" a Parliament-Funkentelechy-esque cut by One Way.

If you've never liked "that kind of music" before, Phat Trax could be a good bridge for you into the booming "Old School" scene.

If you're a rap aficionado, you'll appreciate the last two tracks which are sample-heaven.

You'll hear where Public Enemy, Rob Base and others got their inspiration (and samples). Naomi likes to kick it Old School style on a regular basis. And she kicks it quite well.



Heavenly lives up to their name admirably

by Demian Parker

"Dear K, I need more Heavenly. Send immediately. This is an emergency."

Those are the words I wrote on my order form to Olympia's own K Records (Box 7154, OlyTown, 98507). I have never bought music thru the mail, let alone thought of buying something through the mail from my own town, so that may tell you something of my feelings for this Oxford, England based five-person band (Amelia, singing and writing most of the songs while playing guitar; her brother Mathew on drums; Cathy singing and playing keyboard; Pete on lead guitar; and Rob on bass).

I first heard the Oxford-England based group just under a week ago as this paper goes to press. To be honest, I usually don't go in for the bubblegum-pop sound, but this disc has not left my CD player. Maybe I'm just in love with Amelia's voice, but I don't like to think that is true.

Instead I like to think it is their way of not hitting you over the head with their message, but sneaking it under your mental radar by combining it with some of the hippiest pop sounds to come along

in a long time.
An example may be called for of their lyrics. Under the pop stylings of the song *me and my madness* we have the lines: "I hear things in songs when they're not there/ I see things in darkness when I'm scared/ I feel cold when it's sunny / Cut my hair then I cut myself/ Hurt myself instead of hurting him."

Or how about *modestic*: "When I wake up on Monday/ I don't know why I ever let you stay/ Not a night to remember/ I think you better be gone by Tuesday/ Don't be sad when I tell you/ That you have got to go ... I just want to wake up alone."
Imagine those words sung in true Mary Poppins style over some of the most cheerful organ-driven pop music you can imagine, and you get an idea of how Heavenly work.

My roommate has started using the name Calvin (as in Calvin Johnson - K Record's ubermensch) as an adjective ("That last episode of The Bev was way Calvin!"). I would have to say Heavenly is so Calvin it rots my teeth.

Demian thinks you are pretty Calvin yourself.

Welcome Back New and Returning Students WE WISH YOU A GREAT AND SUCCESSFUL YEAR.



The **Fourth Avenue Tavern** offers you a great place to study, where you can drink beer and eat pizza. We also have pool tables, games, a food bar and specials for students.

You can check out bands every weekend, acoustic open mic Sundays with the Olympia Live Music Society and Alternative music on Wednesday nights.



MICROBREWS, IMPORTS AND DOMESTICS ON DRAUGHT
786-1444 210 E. 4th Ave

CALENDAR OF

EVENTS

THURSDAY 29

Help out troubled farmers by attending a film benefit in the Capitol Theater at 7 p.m. with guest speaker Rotalinda Guillen-Regional director of United Farmworkers of Washington. Featured will be the film "Troubled Harvest" by Women Who Make Movies Production and a music video from Tish Hinojosa.

FRIDAY 30

There will be a Gloomy Dance in the TESC Community Center tonight from 9 p.m. to 1 a.m. Gothic and Industrial.

Benefit for the Olympia AIDS Prevention Project with Trumans Water, Kicking Giant,

Teamsters, Cherry 2000 and JFK FC in the Capitol Theater Backstage. Show starts at 9 p.m. and costs only \$5.

SATURDAY 1

Don't forget to say "rabbit, rabbit", for good luck this month, when you wake up this morning!

Fred Garbo and Company in The Inflatable Comedy Theater Show will perform today at 2 p.m. at the Washington Center for the Performing Arts. Come see all the blow-up toys and sets and watch the man from inside Sesame Street's Barkley the Dog play around. Tickets are \$8, call (206) 753-8585 for more information.

Lois, Heavenly and The Way Downs will play tonight at the

Capitol Theater at 9 p.m. Tickets are \$5, call (206) 754-5378 for more information.

Opening night at the Slow Ride Pub, a new live music bar located at 311 E 4th, in the old City Lights. The local Noses and Steve Munger will provide the entertainment. The event is free.

SUNDAY 2

Come hear Olympia Unplugged at the 4th Ave Tavern. Listen to acoustic open mic. Performers can sign up by 6:45 for the early set and 8:45 for the late set.

New movies for the OFS. The Olympia Film Society's films for this week are Gus Van Sant's version of Tom Robbins' Even Cowgirls Get the Blues and Alanis Obomsawin's first hand

account of the Mohawk village of Kanehsatake's stand off against Quebec police, Kanehsatake:270 Years of Resistance. Call (206) 754-5378 for times and information.

Work with transmission mediation tonight at 7 p.m. through on going open ended meditation. Call the Northwest Network for information at (206) 866-6986.

MONDAY 3

Sleep in or cram.

TUESDAY 4

World class classical pianist Richard Goode will perform an all-Beethoven recital tonight at 7:30 at the Washington Center. Tickets range from \$11 to \$22. Students can receive a student discount.

Flood Bucket, part Sweaty Nipples, part Love on Ice will play tonight at LaLuna in Portland at 9 p.m. The show is only \$3, but you must be 21 and over for this show.

COMICS

Coven House by Cat Kenney



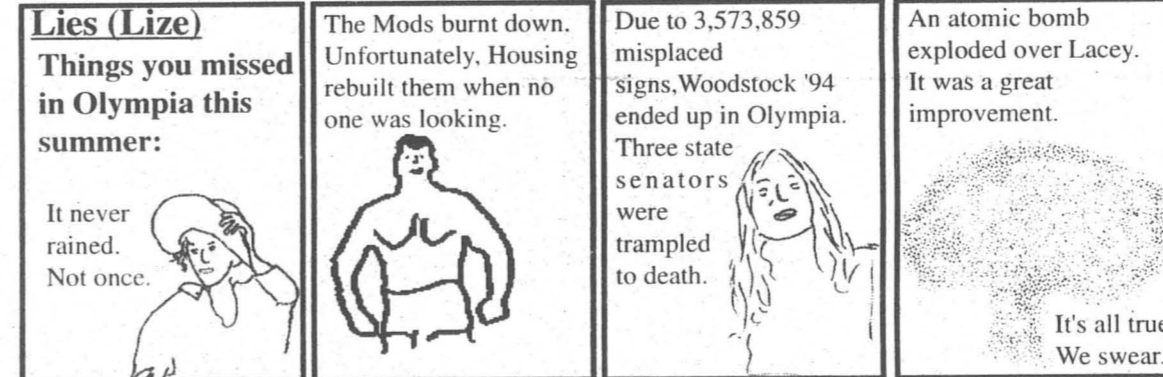
The Evergreen Primer by Robert M. Cook



Murder For Fame by Steve Springer



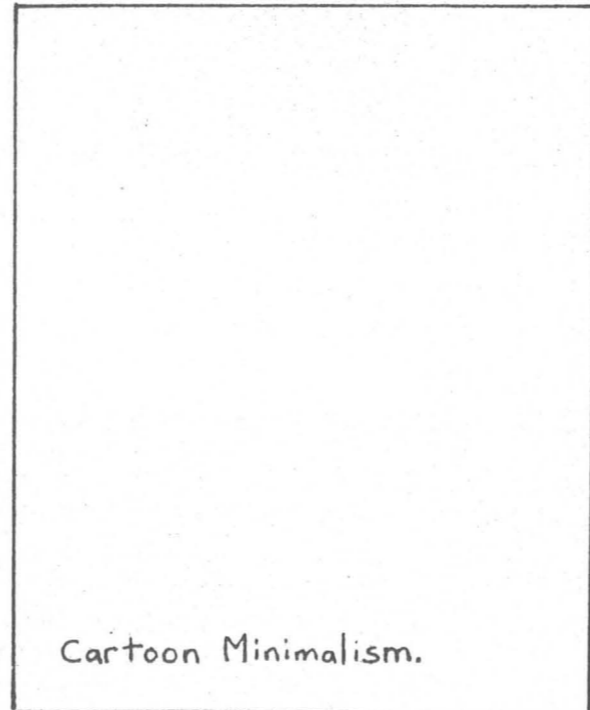
-ize by Joe Watt and Evenstar Deane



Strange Interludes by Lyssa Wodtke



Cartoon X by Scott Livingston



Order Arex by Lisa Anne Boleyn



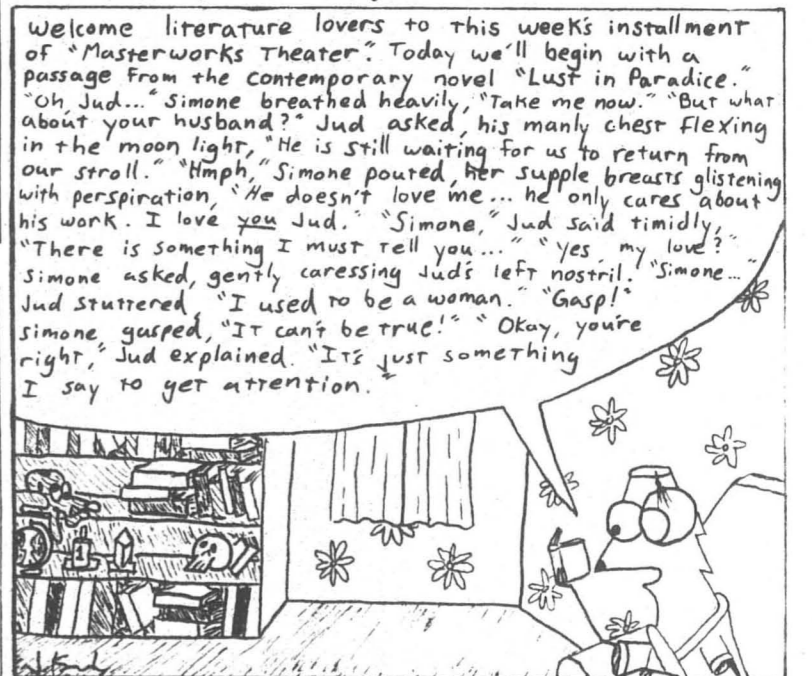
Stick-Figure Strip by Wendy Hall



Snuggle by Jonah ER Loeb



Hose-Head by Josh Knisely



Advertisement by B.Z.

Help Preserve Western World.	Draw Comix.
Traditional Family Values.	
Cooper Point, PICTURE UNAVAILABLE Journal.	Good Pay. Happy Feelings.
Much Prestige. Do now.	Guidelines Available. CAB 316.

S&A Board Members Needed Get Paid to Give Away Money

Put the "The" in TESC!

Be a member of this year's S&A Board.

The S&A Board is a group of students who decide, by consensus, the allocation of over eight hundred thousand dollars in student fees. If you're interested, simply go to the front desk in CAB 320 and pick up your application. Deadline October 14th at 5pm.

this ain't no student council

Batdorf & Bronson ROASTERS

Welcome Back

Look for us at the Deli and at the Espresso Cart in front of the Library.

Olympia's Home Town Coffee Roasters
786-6717
513 CAPITOL WAY

CLASSIFIED RATES:
30 words or less \$3.00
Student Rate: \$2.00
Business Rate: \$6.00
PRE-PAYMENT REQUIRED
Classified Deadline: 5 pm Monday

It's the CPJ

CLASSIFIEDS

TO PLACE AN AD:

Contact: Julie Crossland
PHONE 866-6000 x6054
OR STOP BY THE CPJ
CAB 316, OLYMPIA, WA 98505.

FOR SALE

Digital effects processor for guitar, bass, or vocals. Digitech DSP-256 with delays, chorus, reverb, flange, comb filter, etc. etc. Lots of interesting effects yours for \$200. Call Guido at 352-0784.

The CPJ now has a classified ad rate of \$2 for students of TESC. If you want more information, please contact Julie in CAB 316.

FUNDRAISING

FUNDRAISING -- Choose from 3 different fundraisers lasting either 3 or 7 days. No investment. Earn \$\$\$ for your group plus personal cash bonuses for yourself. Call 1-800-932-0528, Ext. 65.

WANTED

Volunteers needed for many rewarding jobs at the Cooper Point Journal. You can write, edit, take photos, or just hang out. Call us at x6213 or come visit at CAB 316.

FOR RENT

For Rent: 2br, 1 ba, rustic cabin on 1/2 acre in Boston Harbor. Wood stove, fruit trees, greenhouses, huge garden area & A VIEW OF BUDD BAY, THE OLYMPIA MARINA. Single car garage. \$500.00 per mo. Pay all utilities (except water access). Available October 1. Phone 509-925-2435, 741-1991, or write 310 W. 12th, Ellensburg, WA 98926 (dep. \$300 plus last mo.)

BUSINESS OPPORTUNITIES

EARN TUITION? NATURALLY! OUTSTANDING ORGANIC INCOME OPPORTUNITY

Earn a solid income quickly while working part-time assisting in the distribution of wild and organically grown products. A secure & successful 11-year-old Oregon company. For friendly, professional information and assistance, call **Essential HealthStyles** 1-800-656-3280. We will call you back promptly.