

# COOPER POINT JOURNAL

ISSUE 10, VOLUME 39, DECEMBER 10, 2009

YOUR STUDENT NEWSPAPER

See more online at [www.cooperpointjournal.com](http://www.cooperpointjournal.com)

## Flooding damages SEM II C building

by BOBBY WILLIAMS

At about 5:15 a.m. Tuesday Dec. 8 a pipe malfunction caused a flood to break out on the fourth floor of Sem II C building.

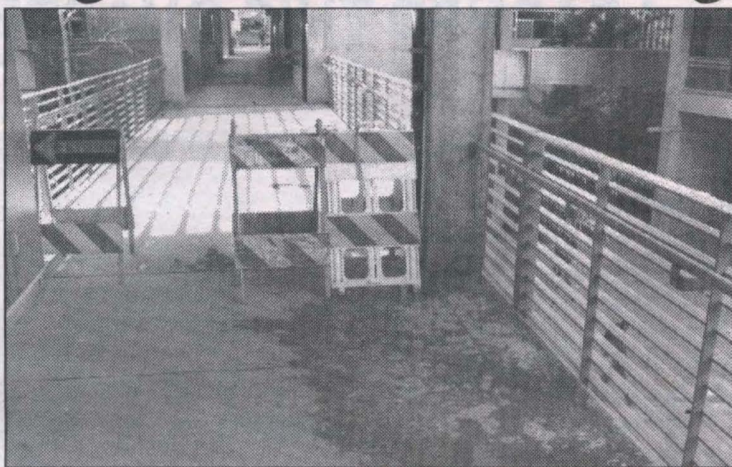
"There was a pipe connected to the sprinkler system. It has a soft plug that is designed to break away if the pipe is in danger of freezing," said Patti Zimmerman, the Space Management Services Manager. The building's water flow switch controls are designed to set off a fire alarm when this type of situation occurs.

Police services called the Olympia Fire Department to clear out the water. Shortly after, the fire department arrived with two large water vacuums to begin the clean up process.

Custodians were then called to the scene to help finish the clean up. "When we walked in there at 6:30 a.m. there were three inches of water in the hall way and offices," said a custodian.

While staff members with fourth floor offices are allowed to gather their belongings, the space isn't expected to be available for class use before Friday.

*Bobby Williams is a junior enrolled in Portraits*



ICICLES FORMED ON THE SEM II 3RD FLOOR RAILING WHEN A PIPE BURST ON DECEMBER 8. PHOTO BY BOBBY WILLIAMS



CUSTODIANS CLEANED UP THREE INCHES OF WATER ON THE 3RD FLOOR OF C BUILDING. PHOTO BY BOBBY WILLIAMS

## Ballot brings Climate Action Plan to Evergreen

by NICK PACE

The Flaming Eggplant and the Clean Energy Committee (CEC) are now asking how students at Evergreen will support sustainable projects in the future. For the Flaming Eggplant the goal is to have a dishwasher, and for the CEC the goal is have students more aware of how they can reduce their carbon footprint. "We had to turn down a grant proposal by the Flaming Eggplant because the purchase of a dishwasher for reusable dishes and utensils falls in the realm of resource conservation," says CEC coordinator Dani Madrone. Despite this setback the Flaming Eggplant still can reach its goal with student support during election week as Madrone states, "One item on the ballot proposed using the fees to support resource conservation projects. If this vote goes through, we will be able to support the Flaming

Eggplant and other students who will be coming to us for resource conservation projects."

Within the ballot the CEC proposed to decide whether to add a new member to their committee. This particular member, Madrone claims, will bring more projects and opportunities for the CEC. These projects are linked with the Climate Action Plan, specifically the biomass gasification that was recently approved for funding. The CEC also addressed that in the ballot students will be able to decide whether the CEC's projects will focus more on local sustainable methods in the Northwest economy, or to go to areas in the country more affected by man-made ecological footprints, such as territory that burns coal for energy. There is also a proposition on the ballot for students to decide whether the funds, which are used after purchase of green power provided by the Clean

Energy fund, can be allocated to the CEC for on-campus clean energy projects. Already the initiative guarantees that 10 percent of the clean energy fund is accessible by students for on-campus clean energy conservation, demonstration, or education projects. Along with these propositions the CEC hopes to expand its message of resource conservation with a clean energy graduate fellowship, and providing a Clean Energy Fair for a community event.

The Clean Energy Committee has high hopes that with active students within Evergreen, the Northwest, and beyond, the goal of reaching carbon neutrality can be reached by 2020. For more information about the CAP, go to [blogs.evergreen.edu/sustainability/our-climate-action-plan/](http://blogs.evergreen.edu/sustainability/our-climate-action-plan/).

*Nick Pace is a senior enrolled in Japan Today*

## Police Blotter: Campus-wide graffiti

Shortly after midnight on Tuesday, Dec. 8, the HCC, Library, and a number of cars in F Lot, including an Evergreen police vehicle, were tagged with graffiti. Officer Tammi Stretch reported the first tagging, on her personal vehicle, shortly after the end of the Pancake Dinner/Study Break, when she and Officer Dwight Monohon were on walk-through, and apparently the tags on the HCC and F Lot were performed during the period of her filing an incident report on the first. Since the paint was water-soluble, no permanent damage occurred. At present, there are no clues as to the identity of the taggers.

~ MARK CICCONE

## Geoduck Union Update

## Budget woes and election tidings

by CANDICE CULLITAN

As this quarter's election draws to a close, Geoduck Union reps can breathe a little easier. At Wednesday's meeting, Tom Mercado, director of student activities, announced that the election will require 10 percent of the student body to vote, not 25 percent as previously stated. Mercado said the 25 percent figure applies only to measures creating new fees. Since there are no fee initiatives on the current ballot, turnout can be held to the lower standard. This comes as welcome news to the Union, which had been discussing extending the election until the first week of winter quarter. Although the Union and the Clean Energy Committee will still be working hard to get out the vote, with help from WashPIRG, there is much less urgency now. Representatives seem to be confident they can get enough votes by the end of the week.

In more sobering news, Representative Colin Bartlett and Government Relations Student Assistant Kelly Norman presented on Governor Chris Gregoire's proposed budget cuts. Norman and Bartlett emphasized that student involvement will be key in keeping these cuts, including a significant reduction to the Washington State Need Grant, from becoming reality. Bartlett said, "We need more people going into senators' offices in a non-confrontational, 'we want to work with you' manner." This will be a pressing issue next quarter for the Geoduck Union and Evergreen students in general.

For more information about the governor's proposed budget, visit the Washington Office of Financial Management at [ofm.wa.gov](http://ofm.wa.gov).

*Candice Cullitan is a senior enrolled in evening and weekend studies*

## Gilbert drops lawsuit, resigns

Faculty member Jorge Gilbert has agreed to resign from his position at the college instead of facing disciplinary action, which could have included termination. Gilbert's resignation was part of a settlement between him and the college after an eight-month-long faculty disciplinary process. In addition to resigning from his position, Gilbert agreed to pay the college \$23,579 to cover money that was refunded by the college to his former study abroad students.

Gilbert also agreed to drop a defamation and discrimination suit he filed against the college and some of its staff over a college investigation into his study abroad trips to Chile. As part of the settlement, Gilbert will not seek any more claims or

grievances against the college.

During February of last year, Gilbert entered faculty disciplinary hearings over charges based on findings from the school auditor's investigation. The auditor found that over four years, Gilbert's bank accounts contained at least a total \$50,000 of student money that wasn't accounted for. After the 2008 study abroad trip to Chile, several of Gilbert's students approached college staff under the belief that they were overcharged for their trip.

Since the disciplinary process started Gilbert had been on paid leave.

Jorge Gilbert will officially resign next week.

~ JASON SLOTKIN

## ONLINE!

OUTDOOR AND RECREATION

**Geoducks Foster and Salvesson receive all-conference honors**

by DARREN WOODS

ARTS AND ENTERTAINMENT

**A, B, Cheese: A holiday how-to**

by ARI MOSS

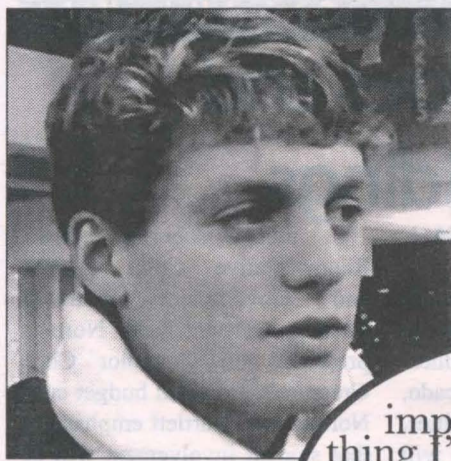
and more at [cooperpointjournal.com](http://cooperpointjournal.com)

CONTRIBUTE TO THE COOPER POINT JOURNAL! FOR INFORMATION, CALL (360) 867-6213, EMAIL [CPJ@EVERGREEN.EDU](mailto:CPJ@EVERGREEN.EDU), OR STOP BY SEM II C3105

TESC  
Olympia, WA 98505  
Address Service Requested

PRSR STD  
US Postage  
Paid  
Olympia WA  
Permit #65

# VOX POP: WHAT'S THE MOST USEFUL/IMPORTANT THING YOU'VE LEARNED THIS QUARTER?



Asa Israel, Freshman,  
Cultural Landscapes

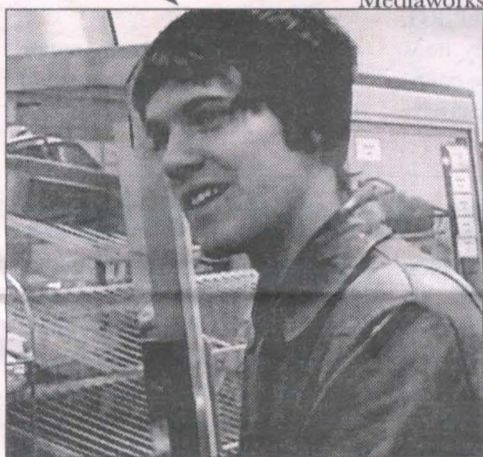
The most important and useful thing I've learned was actually in class...we read a book called *Power Privilege and Difference* and it taught me a lot about perspective.

I've learned tons about permaculture and how to make hugelkultur beds.

PICTURES, AUDIO BY R.Y. SHAH AND NICK PACE

I'd say organization: people view you as a professional...Putting the flutter of my mind on a piece of paper is the best thing I've learned today.

Ryon Converse, Junior,  
Mediaworks

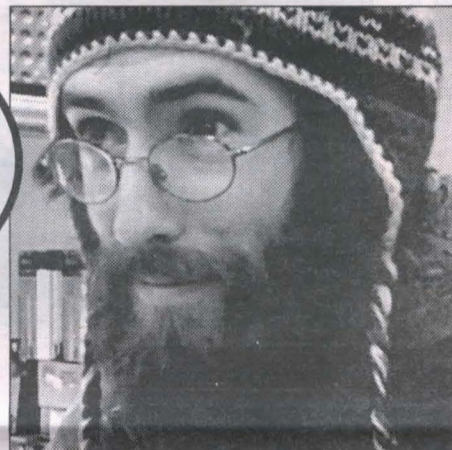


The use of language... (my class is) looking at language loss and language death. The loss of biodiversity and how it is interconnected. The loss of language is incredibly important. So I'm gonna say language. Period.

Dillon Dase, Senior,  
Andrean Roots



Dana Swarth,  
Junior, Writing the  
New Journalism



Sarah Coutts,  
Sophomore,  
Consciousness,  
Art, Matter

That I am in control of my own life.



Going home for the holidays?  
Need a ride to or from SeaTac?



Your Driver: Casey Jones  
360-705-4449  
caseyzj@gmail.com  
\$65 for 1 person;  
\$100 for 2; \$135 for 3

TRADITIONS  
CAFE & WORLD FOLK ART

Brass and Bead  
Necklace  
Women's fistula  
rehabilitation  
project,  
Ghana  
Ojoba Collective

Cotton batik  
dress  
Women's coop,  
Ghana  
Global Mamas  
Ojoba Collective



Earrings  
India  
Mata Traders

Handbag from  
recycled  
grocery bags  
Women's group,  
India  
Asha Imports

Fair Trade & Sweatshop-free  
300 5th Ave. SW, Olympia 705-2819  
Concerts of international and local performers.  
www.traditionsfairtrade.com

**Organization Meeting**  
5 p.m. Wednesdays  
C3107

Focusing on the Cooper Point Journal student group

**The CPJ  
has an open  
door policy.**

We are still taking applications for some positions. Please come in and inquire for details in the office or at [cpj.evergreen.edu](http://cpj.evergreen.edu)!

Contributing to the  
**CPJ**

**The Cooper Point Journal** is written, edited, and distributed by students enrolled at The Evergreen State College, who are solely responsible for its production and content. It is published 28 Thursdays each academic year, when class is in session: the first through the 10th Thursday of Fall Quarter and the second through the 10th Thursday of Winter and Spring Quarters.

is distributed free at various sites on The Evergreen State College campus. Distribution is limited to one copy per edition per person. Persons in need of more than one copy should contact the CPJ business manager in SEM II C3105 or at (360) 867-6054 to arrange for multiple copies. The business manager may charge 75 cents for each copy after the first. Terms and conditions are available in SEM II C3105 or by request at (360) 867-6054.

The content of *The Cooper Point Journal* is created entirely by Evergreen students. **Contribute today.**

Copies of submission and publication criteria for non-advertising content are available in SEM II C3105, or by request at (360) 867-6213. Contributions are accepted at SEM II C3105 or by email at [cpj@evergreen.edu](mailto:cpj@evergreen.edu). The CPJ editor-in-chief has final say on the acceptance or rejection of all non-advertising content.

cpj

Business

Business Manager  
Kristina Williams

Associate Business Manager  
Stephanie Hurlburt

Ad Representative  
Steven Chen

Ad Designer  
Lee Gillentine

Distribution Manager  
Benji Friedman

News

Editor-in-Chief  
Madeline Berman

Associate Editor  
Jason Slotkin

Web Managing Editor  
Brian Fullerton

Print Managing Editor  
Jo Sahlin

Arts & Entertainment Coordinator  
Jill Storlie

Calendar Coordinator  
Khrystine Kelsey

Comics Coordinator  
Grace Moore

Letters & Opinions Coordinator  
available

Outdoor & Recreation Coordinator  
Darren Woods

Student Voice Coordinator  
R. Yazmin Shah

Copy Editor  
Sarah White

Copy Editor  
Candice Cullitan

Copy Editor  
available

Multimedia Reporter  
Bobby Williams

Multimedia Reporter  
Nick Pace

Multimedia Reporter  
available

Photographer/Videographer  
Emily Weisberg

Page Designer  
Nick Thomas

Page Designer  
JJ Wampach

Page Proofer (print)  
Liz Lueders

Page Proofer (web)  
Yves Chamberlin

Headline Writer  
Mark Ciccone

Media Editor  
Tara Swenson

Blogs Coordinator  
available

Briefs Coordinator  
available

Comments Coordinator  
Dani Witherspoon

Advisor  
Dianne Conrad

Associate Advisor  
Seth Vincent

Cooper Point Journal  
SEM II C3105

News: (360) 867 - 6213

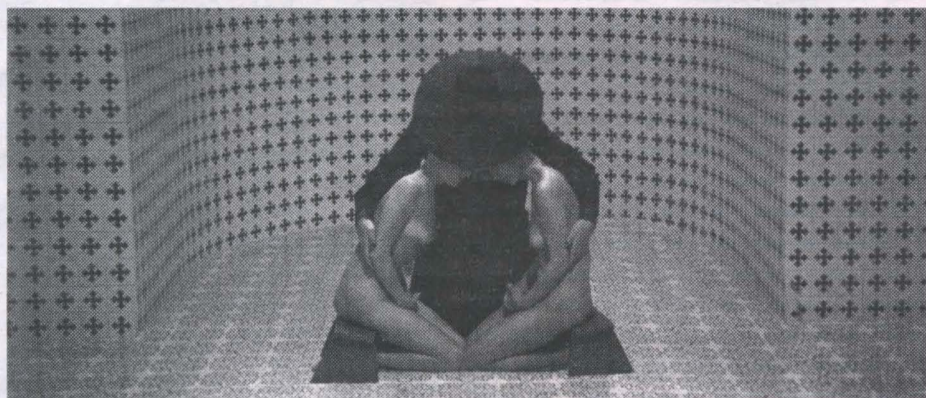
Email: [cpj@evergreen.edu](mailto:cpj@evergreen.edu)

Business: (360) 867 - 6054



The CPJ is printed on recycled newspaper using soy ink.  
© Cooper Point Journal 2009

# Cheap Date: Holy Mountain



Holy Mountain (Dir. Alejandro Jodorowsky, 1973)

by JASON TRENT

As discerning readers of this feature may have gathered by now, I thrive on weird, obscure cinema and have seen more than my share of cult films and B-movies. I can say without reservation that *Holy Mountain* is the weirdest piece of celluloid that I have ever watched. It is like watching a movie that was written by tarot card or as an initiation into a secret society.

*Holy Mountain* is completely allegorical and accords the bizarre and the beautiful on equal terms. In terms of plot, it's a sort of a quest movie roughly following the Joseph Campbell template. The hero (a Christ-like "thief") discovers he has a special purpose—to gain the secrets of eternal life. He assembles his crew of adventurers and comes back changed. But this ain't Middle Earth and Campbell gets a run for his money as Jodorowsky alludes to so many different myths and spiritual concepts that one can actually become disoriented, not in the sense of "What is going on with this movie?" but in the sense of "Am I losing my mind while I am watching this movie?" *The Wall* is a movie that was meant to be watched while on drugs; this movie makes you feel that way with or without mycological support. Although full of humor,

*Holy Mountain* embraces the grotesque. "Why not re-create the Spanish conquest of South America with frogs?" *Holy Mountain* asks us. "Why simply feature a dwarf actor if one can feature a nude dwarf with missing limbs?"

The movie starts to run out of money in the last third and the symbolism becomes even broader and more obscure. This part is best watched with the director's commentary on.

Jodorowsky is a seriously whacked-out dude who is very heavily into witchy things. He was acquainted with Salvador Dali and when Marilyn Manson was looking for a minister at his wedding (to cheesecake model Dita Von Teese) he hired Jodorowsky for the job. The marriage lasted three months. John Lennon reportedly put up a million towards the movie's budget and recently Jodorowsky has been name dropped by the likes of Erykah Badu. His resume as a moviemaker has decade-long holes in it, during which he writes for comic books, paints, and teaches.

*Holy Mountain* is available on DVD at the Evergreen Library.

Jason Trent is a junior enrolled in Student Originated Studies: Visual Arts

# Menefee eclipses all-time mark

by DARREN WOODS

The night was Dec. 5. The Geoduck men's basketball team took on Eastern Oregon University at home, in their first conference match-up of the season. It was a particularly ugly game for the Geoducks. They scored less than 30 points in the first half for the first time in the 2009-10 season, and they shot a dismal 21-62 from the floor and an even uglier 18-31 from the free-throw line. On the other hand, Nate Menefee went into the game needing only 22 points to eclipse Trelton Spencer's all-time scoring record at The Evergreen State College. Menefee scored 26, while the record was broken on a three point shot minutes before the final buzzer sounded. Dressed in street clothes, cheering on the Lady Geoducks in a home game against Pacific Lutheran University on Dec. 8, Nate Menefee joked with his teammates, but made time to talk about being the Geoducks' new all-time leading scorer.

Maurice Tolliver mocked a would-be Menefee response to what the record meant by joking, "It's big, but not as much as a championship, but it does mean something." Tolliver was not far from Menefee's real response. After leaving Menefee alone to talk about the performance Menefee stated that, "It's a big individual achievement but it doesn't really mean a lot because it came in a loss. It's really not too enjoyable." Menefee's response was valid. After all, the Geoducks did lose the game 74-65 to the CCC rival and 23rd ranked Mountaineers of EOU that fateful night. The Evergreen scoring machine explained that just four years ago he was close to being out of the game entirely. Menefee

"left to Portland on the verge of giving up hoopin'," he added in a humble tone among the cheers of a Lady Geoduck win against PLU. The leaving to Portland he refers to is his brief stint playing for Warner Pacific University of Portland where Menefee built a positive reputation before transferring to Evergreen. Coach Jeff Drinkwine was building something special and wanted the Tacoma native Menefee to be a part of it.

Menefee recalls being lured to Evergreen by the history it possessed and coach Drinkwine saw Menefee as someone he would like to see lead the team. So far he has done just that. He led the Geoducks to a Sweet 16 appearance at the NAIA national tournament while being named NAIA all-American and Cascade Collegiate Conference pre-season Player of the Year two years in a row. Roommate, friend, and teammate Maurice Tolliver put into perspective that the record only took Menefee three years to attain while it took Spencer four full years. The record "says a lot, we've only played two [conference] games" and that the scoring record is a testament to the "hard work and dedication that he puts in." Menefee's teammates noted that the way he prepares for games is unlike any other. "The way he gets ready," Tolliver began before being interrupted by senior Gerrod Jenkins adding, "He [Menefee] wants it."

Menefee and the Geoducks will see their next action at home against Linfield College Saturday. The Geoducks look to rebound from their two losses last weekend to improve on their 5-5 overall record.

Darren Woods is a junior enrolled in Art of Conversation and Intermediate French

DOWNTOWN OLYMPIA AT 108 FRANKLIN ST

PIZZA BY THE SLICE OR WHOLE PIZZA PIES PH 360.786.9640

JOIN US FOR  
AN AFTERNOON  
OF CHOCOLATE  
INDULGENCE!

Whether you are 6 or 60, you know you can't say no to sweet, rich chocolate! Treat yourself to an afternoon of chocolate deliciousness as we celebrate Chanukah with all things chocolate!

December 13, 3:30 - 5:30 pm  
RSVP to Chava@JewishOlympia.com

# CRIME STOPPERS

OLYMPIA/THURSTON COUNTY

## CRIME STOPPERS

Olympia/Thurston County  
493-2222

Crime Stoppers and The Evergreen State College Police Services are requesting your help in solving the following crimes committed on campus. Callers remain anonymous and receive cash rewards on information leading to arrests or charges being filed.

Crime Stoppers will pay up to \$1,000 for information

- Burglary in the F Housing Unit; Laptop and camera – Over Thanksgiving holiday
- Thefts in the J Housing Unit; Laptop and camera since October this year
- Theft of a Police Bike from in front of SEM 1 Bldg during the past month
- Vehicle prowler where a laptop was stolen – December this year

Help keep our campus safe by taking responsibility and reporting information to Crime Stoppers: No retaliation, no court appearances and you even receive a reward.

Remember: You never have to leave your name!

## Letter from a student Board of Trustees member

### WANTED: Students to save their educational opportunity

by DIXON T. MCREYNOLDS III

As our fall quarter comes to an end I would like to wish each and every one a very happy holiday season. In the last legislative session the state of Washington faced a \$9 billion budget shortfall. Many programs were cut; human services and higher education took cuts. Students also saw a 14 percent tuition hike for the next two years.

As the 2010 legislative session approaches the state faces a \$2.6 billion shortfall. There have been rumors that this session will be worse than the last. The Higher Education Coordinating Board (HECB) has made it clear that they believe that the 55 percent - 45 percent formulas for funding education should be re-looked at by the legislature. In my view, there are more important things to look at during this session. College costs are rising and the lowest-income students are left particularly vulnerable. There have been hints that when the governor releases her budget cuts she will call for the total elimination of the State Need Grant. The State Need Grant program is designed to pay a portion of educational costs for needy and disadvantaged students. According to the HECB website grant awards for full time students range from \$2,500 to more than \$6,000 a year, depending on the student's educational cost. In 2009, the program received about \$193 million

in state dollars, and about \$1.15 million in federal matching funding, to help about 70,000 students go to college. 42 percent of the students at 4 year institutions that received the State Need Grant were under the age of 21. 24 percent were 21-23 years old and 22 percent were 24-29. The legislature established the State Need Grant program, declaring that "the higher education of its qualified (residents is) a public purpose of great importance to the welfare and security of the state." The Governor has said she does not want to make these cuts, but she will not have a choice.

There has been word that a revenue package might be proposed to fill the gap. Without options for raising new revenue in order to deal with the shortfall it will be an excruciatingly difficult balancing act to deal with this economic crisis in the fairest and wisest manner possible. Without a dedicated funding source for higher education, fewer Washingtonians will have the chance to earn a college degree from Washington's public universities, and employers will have a harder time filling skilled positions locally. Many economists in the state of Washington say that we must overhaul our current tax structure to solve this problem.

This past year I sat through the 2009 legislative session and watched the cuts in human services and higher education along with a tuition hike. What I did not see were the crowds of students that these

cuts affected. During session, the higher education committees in both chambers had open hearing giving citizens a chance to voice their opinions and concerns. I am calling on all students to stand up and let your voice be heard by the legislature. This year is a short session; I believe it's important we get the ball rolling now, and as your Board of Trustee member, I look forward to working with you this winter. Many of the students at The Evergreen State College depend on the State Need Grant to attend college. At the beginning of the winter quarter I will hold a series of town hall style meetings so we can mobilize to respond and go to the Legislature and testify before these committees. We must help people in our community understand that the access to higher education is in trouble. We must not sit back and believe someone else will do it for us. If the State Need Grant is eliminated, students you see on campus today may not be here next fall. We must remind lawmakers why they established the State Need Grant. We must let them know what this means for our campus and our state if they eliminate this funding. Oliver Wendell Holmes once said, "What lies behind us and what lies before us are tiny matters compared to what lies within us."

- Dixon T. McReynolds III is a senior and Student Board of Trustees Member

## Dreams

by JACOB NEUHARTH

I dreamt of you again  
and we met in the snow  
I dreamt of you again  
and I woke up so quickly  
I dreamt of you again  
and I gasped for air  
I dreamt of you again  
and I tried to forget

I dreamt of you again  
and I told no one  
I dreamt of you again  
and I told someone  
I dreamt of you again  
and I told you  
I dreamt of you again  
and I saw you

I dreamt of you again  
and you never called back  
I dreamt of you again  
and you never replied  
I dreamt of you again  
and answered your call  
I dreamt of you again  
and I wanted you back

I dreamt of you again  
and my heart ached  
I dreamt of you again  
and I quietly wept  
I dreamt of you again  
and I was silent  
I dreamt of you again  
and I went back to bed

Jacob Neuharth is a senior enrolled at The Evergreen State College

## Out to the coast

by DEREK KING

If you are an active person wanting to explore some of Washington's most raw natural beauty, the coast is filled with a plethora of activities. As Evergreen students living in Washington state we are very fortunate for the many opportunities that await us. Our green playground includes picturesque mountain ranges offering hiking, camping, skiing, climbing, and much more; these lush emerald forests help give Washington the fitting title of the Evergreen State.

What some people forget is that we also have in our backyard the expansive coastline ranging from Long Beach to Neah Bay. There is surfing, kite festivals, heritage museums, storm watching, beach combing ... in fact, there is so much that our coastline offers, one could spend years in these areas exploring the many beaches and what they offer within our state. I spent the last quarter exploring 15 of these beaches, each one with different draws and unique beauty. Most of these pristine areas are overbooked and packed with tourists in the summer; in the off-season, however, they

are mostly vacant. As long as you come to the coast prepared with rain gear and boots one can not only weather the harsh storms that hit the coast, but enjoy and experience them fully. Nothing better in my opinion shows the rugged Pacific Northwest more so than some of the more remote areas on Washington's coastline.

Two must-see gems of the Washington coast that I recommend are Cape Flattery and Cape Disappointment, the northernmost and southernmost beaches. Cape Disappointment State Park is the southwesternmost tip of Washington on the north side of the Columbia river in Ilwaco; if driving from Olympia, allow three hours for a scenic drive down the coast. At the park is ample room to camp, rent cabins, or park RVs. With two lighthouses, hiking trails, 27 miles of beach line, views of the Columbia river mouth, and epic storm viewing areas it is no wonder why this location is the most visited park in our State Park system. Despite this fact, if you travel here in the off-season in winter you get cheap camping rates, very few people, and true Northwest weather. If you're not a fan of storm watching, there are still plenty



of photo opportunities and beach activities including swimming, bike rentals, beach driving, and kite flying in the summer months as long as you're okay with the crowds. Reservations and more information can be obtained at the Parks website, parks.wa.gov.

The Cape Flattery trail is a truly jaw-dropping experience. To get there you drive about four hours from Olympia toward Neah Bay through Forks and follow the signs for the northwesternmost point of the lower 48 states. You'll drive through the Makah reservation, so tribal laws must be respected. Neither words nor pictures can do this spot justice. The 30-minute walk along the newly restored cedar planked walkway through the Makah wilderness is magical in the most natural way. Once getting to the trail's end, wooden observation decks hang over the rocky cliff edge to view the raw beauty of the ocean carved tip of the peninsula. From up high and safe you can view the turmoil of angry swells crashing against the rocks. Tatoosh Island, a former Makah whaling camp, now the site of the Cape Flattery lighthouse, can

be seen from the newly built viewing area. Whales, birds, porpoises, and other marine life are often seen in abundance. Around the reservation are campgrounds and lodging if you want to explore the other nearby beaches such as Hobuck and Shi Shi. Plan your time wisely because once you get to these places you will not want to leave.

Cape Disappointment and Cape Flattery are just the tip of the iceberg of what the Evergreen State's coastline has to offer. If standing on a cliff side being pelleted with rain, feeling the force of the wind almost pushing you over, viewing 20-foot swells crashing the rocky shoreline sounds like fun, then Washington's rugged winter coastline is for you.

Derek King is a freshman enrolled in an independent learning contract

PHOTOS BY DEREK KING





# REIMAGINE YOUR COMMUNITY

## Diversity Fund Grants available for students, staff and faculty for events or activities that...

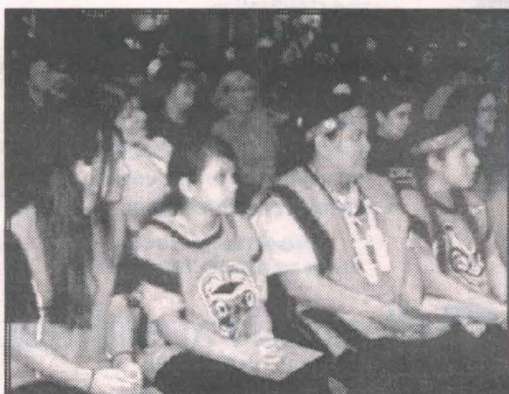
raise awareness about issues of individual & institutional oppression and discrimination

provide opportunities to develop a socially responsible multicultural learning community

address issues of cross-cultural equity and social justice

## Apply online

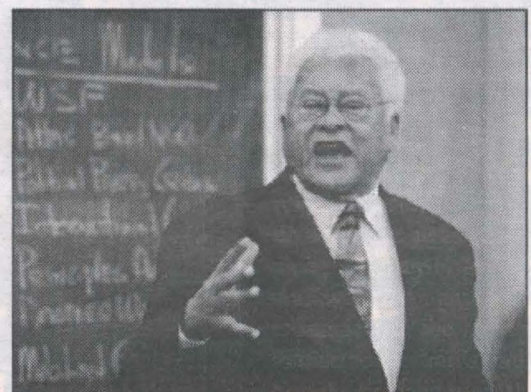
<http://collab.evergreen.edu/surveys/diversityfund>



**2007-08 Diversity Fund Event**  
Liberal Arts Forum: Education, Ethics and Mythos



The Evergreen State College  
President's Diversity Fund



**2007-08 Diversity Fund Event**  
Reverend James Lawson Lecture on non-violence.

# Calendar

## Thursday December 10

### A Christmas Carol

Thursdays through Saturdays at 7:55 pm  
Sundays at 1:55 pm  
Tickets are \$10-\$12 and available at Yenny Music Company, 1404 Harrison Ave NW, Olympia, 360-943-7500 (cash & checks only), online at [www.buyolympia.com/events](http://www.buyolympia.com/events) (Credit cards only, add 10% service charge) or at OLT on the night of the show (when available) 1925 Miller Avenue, Olympia WA, 98506, 360-786-9484 [www.olympialittletheatre.org](http://www.olympialittletheatre.org)  
Event price: \$10

### Lecture on Rwanda

A free lecture on Rwanda is set for 7:30pm at the Olympia Center on Thursday December 10th. Retired Supreme Court Justice and Betty Utter will describe their fascinating and important work in Rwanda and Tanzania with the International Criminal Tribunal for Rwanda. The Tribunal is a United Nations court established to prosecute those most responsible for the 1995 genocide. The event is sponsored by the Olympia World Affairs Council. For more information call 360-867-0919. 7:30pm

## Friday December 11

### Holiday Native Art Fair

The Annual Longhouse Holiday Native Art Fair will be Friday, December 11, 2009 10 AM - 5 PM and Saturday, December 12 from 11 AM to 6 PM in the Longhouse.

### Climate Change Vigil

Concerned citizens will line both sides of the 4th Avenue Bridge in downtown Olympia to light a candle and send a message to world leaders at the Climate Summit in Copenhagen, and community leaders here at home, asking for immediate and effective action on climate change. 5:00pm

### Sounds Escape: unusual vocal music

The Evergreen Singers and ensemble obtuse have teamed up to bring you

an evening of intriguing and unusual music, including an original piece by Evergreen's own Rachel Diamond. 7:30pm - 8:30pm

### Contra Dance

Come dance!  
Back bay of the CRC gym. 7:30pm

## Saturday December 12

### THE MAIDEN AND THE WARLOCK

a tale told in verse and pantomime  
Dramatic story telling with violin accompaniment. Gorgeous costumes, homemade snacks, soup and tea! Dance party to follow. Off campus at the Hall of the Woods 3712 Sapp Rd.! 7:30 pm  
Event price: \$2

### Alternative Gift Fair

If you would like to give a gift this holiday season that will make a difference in someone's life, why not give an alternative gift at the alternative gift fair? Several non-profits will be represented. At The Olympia Center, 222 Columbia Street Northwest. 10:00am - 3:00pm

### Generation Friends Discovers

**The Spirit Of Christmas!**  
Christmas-themed improv show! (with special guest!)  
Come enjoy the festivity revelry of a holiday-themed Gen Friends improv show! (with special guest!) Naughty or nice...you'll find yourself on the LAUGHING list! HAHHAH!!!! (This show will feature, for the first time ever, Generation Friends' stand-up comedy!)  
Lecture Hall 1  
8:30pm  
Free

### Giant Robot Appreciation Society

Do you appreciate giant robots? Then join the Giant Robot Appreciation Society! The Giant Robot Appreciation Society is Evergreen's anime club. Meetings usually

have free popcorn and are every Wednesday from 6-9 p.m. in Sem II C1107 and Saturdays from 2-4 p.m. in the HCC. Visit <http://academic.evergreen.edu/groups/animeclub/> for more info.

## Sunday December 13

### Workparty

Join the WSU Extension Native plant Salvage Project on Sunday, December 13, 2009 for a volunteer workparty at a forested location in Olympia slated for development. Tools, gloves, snacks, hot drinks, and lunch provided! To attend, please send an email to [nativeplantsalvage@gmail.com](mailto:nativeplantsalvage@gmail.com), or call 360-867-2166 and to get details and directions. Visit the website, [nativeplantsalvage.org](http://nativeplantsalvage.org) to read more about us and our upcoming events. 9:00am

### The 24 Hour Sketch Comedy Hour

An All-New Sketch Comedy Show!  
In Lecture Hall 1  
Free admission!!!  
Come witness an event for the ages. Gen Friends presents an all-new sketch comedy show written overnight based on suggestions received from the audience at the improv show the previous night! 8:30pm  
Free

## Tuesday December 15

### Unity Jam

UNITY JAM is a weekly musical gathering to lighten the spirit and set the heart to singing.  
OPEN TO ALL!  
This gathering is mega-flexible around the themes of music, unity and wild truth. Everyone is welcome - musicians

who want to perform a piece for a small audience of appreciative listeners; poets who want to try out a new (or old) poem; singers who want to jump in with the group and work on harmonies, etc....  
Library 1412  
Noon

## Wednesday December 16

### Students in Service Orientation

Are you interested in doing service for the community and receiving up to \$2,362 towards your tuition? Learn more about this opportunity through Students in Service (A Campus Compact Americorps Program) at The Center for Community-Based Learning and Action. 1:00pm - 3:00pm

DO YOU HAVE AN  
EVENT COMING UP?  
SUBMIT YOUR EVENTS  
AND MORE TO  
[WWW.COOPERPOINT-  
JOURNAL.COM](http://WWW.COOPERPOINT-JOURNAL.COM)

## Evergreen Students Get 10% off

Just show us your student ID.

Mandelin's: 3000 amazing sq. ft. of men's and women's clothing, every imaginable accessory and ambiance galore!!

Mandelin's Consignment Clothing & Accessories  
222 Division St. NW  
360-628-8718



# Mandelin's CONSIGNMENT

**CRAZY COOL CLOTHING & Accessories**

open Monday-Thursday 10am-6pm, Friday-Saturday 10am-7pm  
COME CHECK US OUT AND NEVER PAY FULL PRICE AGAIN



## 8TH NIGHT CHANUKAH DINNER!

SAVE THE DATE FOR OUR COMMUNITY FRIDAY NIGHT DINNER  
ON THE 8TH NIGHT OF CHANUKAH:  
**DECEMBER 18TH AT 6:30 PM**

Hear uplifting stories about the celebration of Chanukah that are sure to inspire!  
RSVP to [Chava@JewishOlympia.com](mailto:Chava@JewishOlympia.com)

## New York Style Hand Tossed Pizza

### Huge Selection of Fresh Toppings!

**Pizza By The Slice & Whole Pies**  
Vegan Pizzas Available  
Salads, Calzone, Fresh Baked Goods  
Micro Brews on Tap, Bottled Beers, Wine



Dine In or Call Ahead for Take Out  
**360-943-8044**  
Located at Harrison & Division (233 Division St. NW)

## You may qualify for **FREE BIRTH CONTROL** for one full year through **Take Charge**



**Take Charge** is a Washington State Medicaid program for patients without insurance and subject to strict Federal guidelines.  
Learn if you qualify at [www.ppgnw.org/takecharge](http://www.ppgnw.org/takecharge)

**Services covered include:**

- All birth control methods including: birth control pill, patch, implant, vaginal ring, shot, IUD, condoms and sterilization (vasectomy or tubal ligation)
- Annual exam and birth control methods education
- Testing for Chlamydia and Gonorrhea during the annual exam (for women 25 and younger)
- Emergency contraception

(Fees will apply for services that are not related to family planning.)



**Planned Parenthood**  
of the Great Northwest  
800.230.PLAN (7526) [www.ppgnw.org](http://www.ppgnw.org)

*Talk to us in confidence, with confidence.*

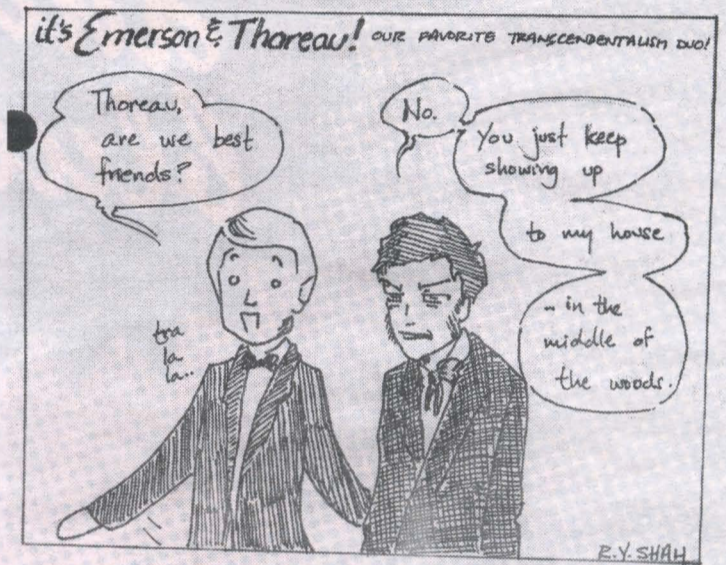
Planned Parenthood® is a 501(c)(3) not-for-profit organization. We rely heavily on support from donors who help sustain responsible reproduction. Planned Parenthood® is a registered trademark of Planned Parenthood® Federation of America, Inc. © 2009 Planned Parenthood® of the Great Northwest.

# COMICS PAGE

Madeline Berman

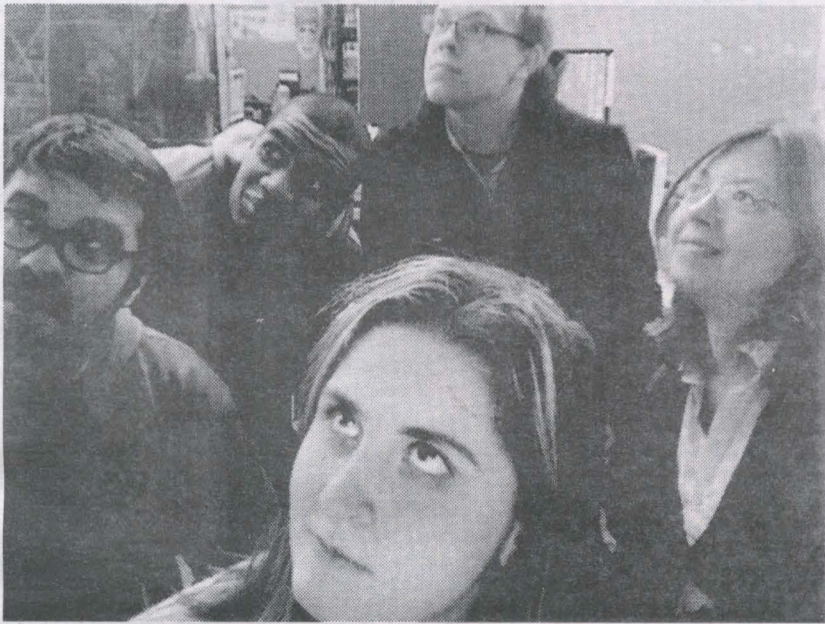
R. Y. Shah

PART SIX

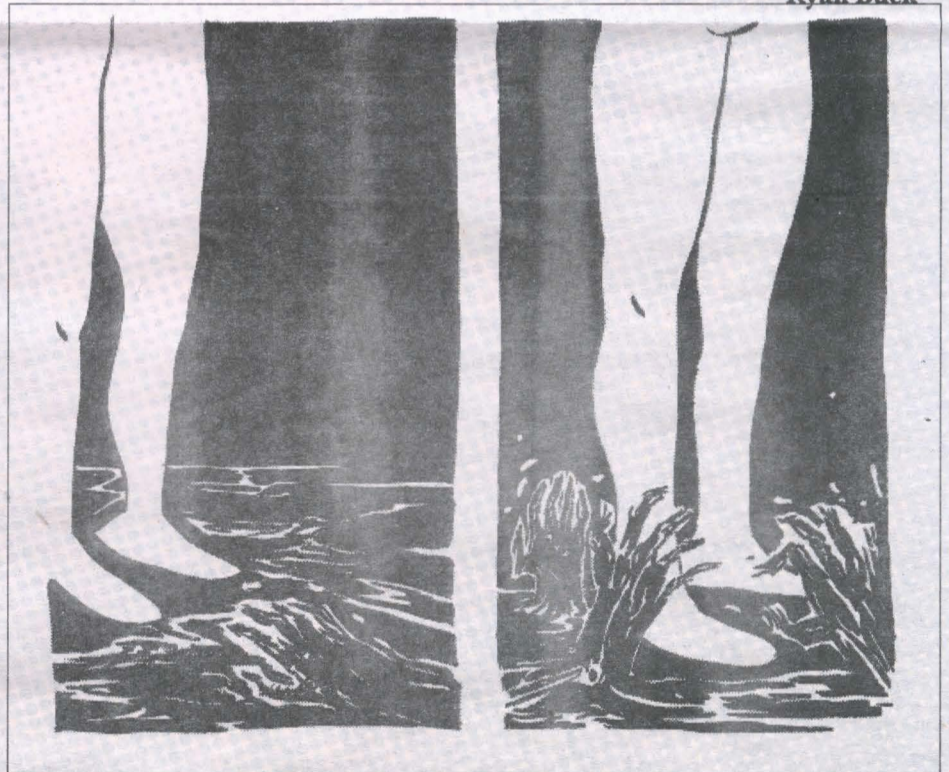


This photo has no context!

Give it some. Post your captions as comments on the CPJ website. We will post our favorites in the next issue.



Ryan Buck



Unimportant thing that keeps me up at night

#3: I still can't figure out if "Fantasia" was supposed to have a cohesive plot or not.



Grace Moore

Like what you see?

Contribute your own comics and read more at CooperPointJournal.com !

**C&D**  
**Gourmet Coffee Company**  
16 oz. beverage \$2.75 with a valid student ID

203 A. 4th Avenue  
Olympia 943-1434  
across from the State Theater

Free WIFI, home made baked goods, complete selection of espresso beverages. Come in and you will find a comfortable quiet setting to study and surf the web.



"A place to share friendship, diversity and great foods!"

Purchase one meal, get second meal

**1/2 PRICE!**

with purchase of two beverages, discounted meal at equal or lesser value. Offer expires 12/31/2009.

Downtown Olympia  
211 5th Ave SE 357 6229

**see this picture  
in 8 full-throttle bits  
of red, green,**



**online at  
cooperpointjournal.com**