

Cooper Point Journal

ISSUE 7 VOLUME 40

A PRINT COMPILATION OF WWW.COOPERPOINTJOURNAL.COM

FEBRUARY 17, 2011

Exploring the Evergreen underground Page 4

Letter to the Editor: Unwelcome at Evergreen? Page 5

Mountainbiking club riding rough terrain Page 7

CAB undone

Renovations fail to fulfill expectations.



Photo: Benji Friedman

Workers scramble to finish CAB renovations after deadline in September 2010 before the start of the fall quarter.

Jack Lukins

CPJ Staff

As the proposed deadlines for completion of the College Activities Building (CAB) continue to drift by, many of the occupants are becoming increasingly dissatisfied with construction delays, unmet expectations, and miscommunication with the contractors.

The CAB is meant to be not just the site of the Bookstore and places to eat; it is supposed to be a gathering place for the students and staff of Evergreen and the hub of campus life.

It is being partially paid for by a student fee of \$6 a credit. But the numerous issues with the construction process have had a major impact on this goal, and have brought into question the use of student funds to back a project that has left them disappointed.

The CAB was meant to be completed in late August, and ready for use by the time classes started. When occupants such as the Bookstore, Student Activities, and the Flaming Eggplant moved in, they found their spaces unfinished.

Max Chapman, at the Flam-

ing Eggplant, said that while the space is well designed for the Eggplant, they had to clean up debris left by construction crews, and CAB delays kept them from opening on schedule.

The contractor, Penattoni Construction, gave a new date of completion of Oct. 31 for the CAB. When that passed, they said Nov. 11, and even though this date passed with construction still incomplete, the CAB grand opening ceremony occurred on Nov. 16.

The new date was set for Dec 24, and when again this deadline was not met, Penattoni declined to give a new date of completion. So the work remains incomplete.

Vice President Art Costantino, who was Co-Chair of both the Pre-Design and Design Committees, said that he was "disappointed" that work was still not complete. He also stated that he saw the work moving forward.

Tom Mercado in Student Activities pointed out obvious errors with the building, such as leaks in the ceiling, and televisions that appeared in many rooms but are

See CAB Page 2

Inaccessible

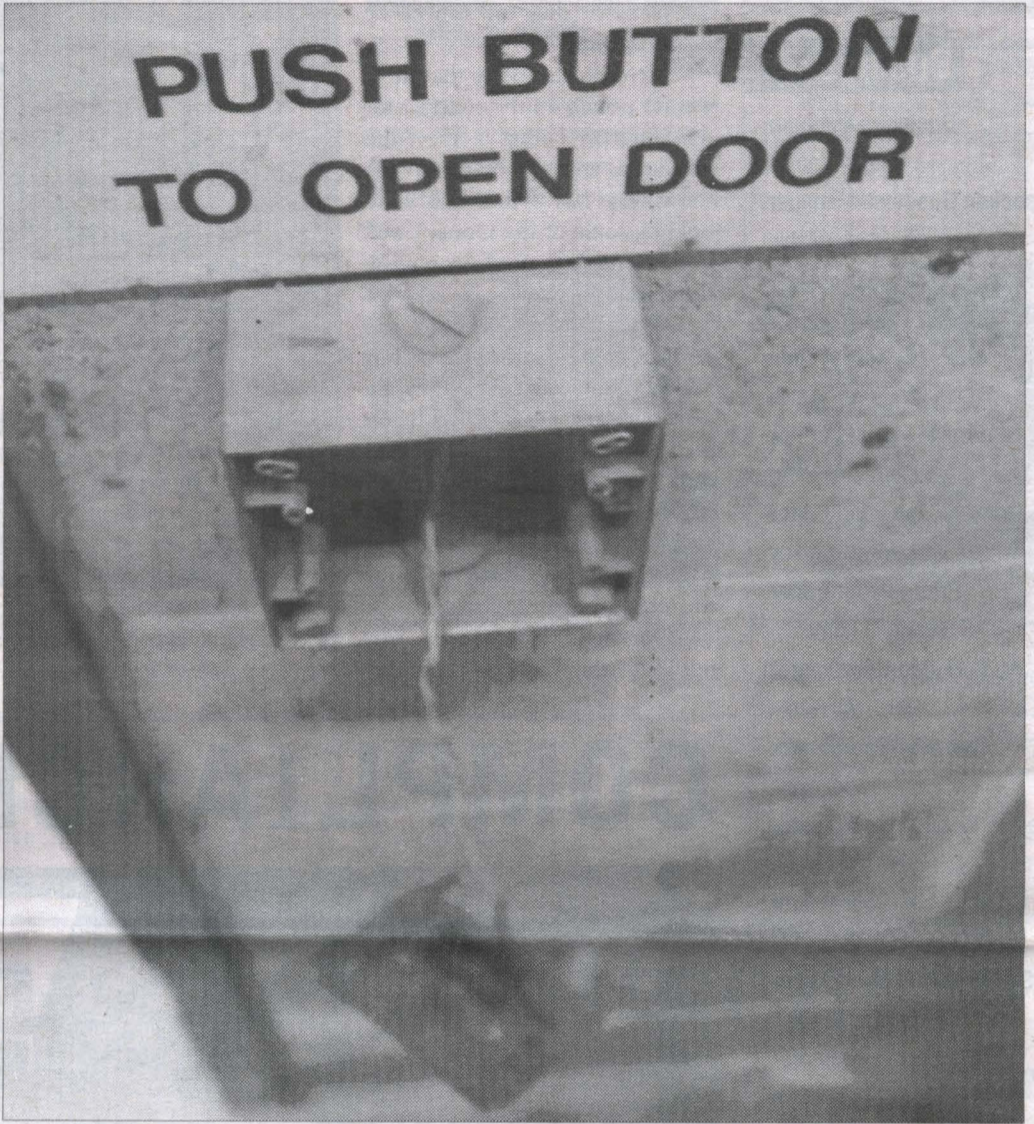


Photo: Nick Strite

This access plate, in the basement loading dock of the College Activities Building, has been hanging from its wires since students moved back into the CAB. At this time, it is not clear whether it will be replaced or removed by campus facilities.

Complications with ADA compliance

Melkorka Licea

CPJ Staff

"The main issue right now is the CAB/Student Union building," stated Evergreen student Rob Workman. "As a person who is a Coordinator of Student Accessibility/Activity Services, there is not equal opportunity for students to access the Student Activities center."

Costantino has been working to fix the list of 23 items that

Workman brought to the attention of the administration, stating that "the work being done to correct ADA issues is on track."

By law, all facilities on the Evergreen State College campus must be accessible to people with restricted mobility.

According to the Americans with Disabilities Act of 1990, "Those facilities that are constructed or altered by, on behalf of, or for the use of a public entity shall be designed, constructed; or

altered to be readily accessible to and usable by individuals with disabilities."

Rob has been very active in working to improve ADA compliance on campus since 2006, with one of his major accomplishments including the establishment of the Assistive Technology (AT) Lab.

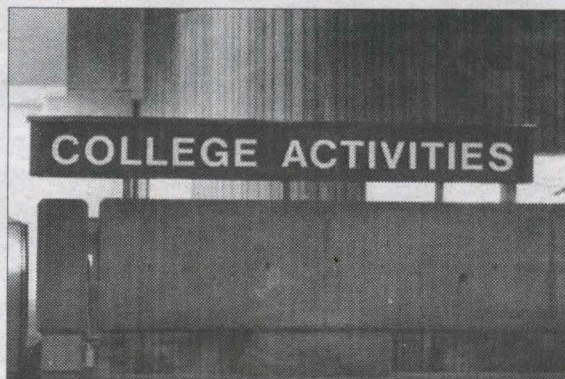
Rob feels that his drive stems from the fact that he "looks at things from a unique perspective"

See COMPLIANCE Page 2

What you're missing on www.cooperpointjournal.com

VOX POP

View more about what your fellow Greeners think about the new CAB building online at www.cooperpointjournal.com.



Check out the punch list for the CAB that describes some of the issues with the renovations to the recently "finished" building at www.cooperpointjournal.com

THE WIDER WORLD

Read more of Mark Ciccone's column "The Wider World" online at www.cooperpointjournal.com. Read about Ciccone's views on political and social dilemmas and interests in today's society.

cooper point journal

Business

Business Manager

Galen Radtke

Associate Business Manager

Available

News

Editor-in-Chief

Erin Finch

General Managing Editor

Jo Sahlin

Content Managing Editor

Hannah Harkey

Print Layout Editor

Meagan Thompson

Audio/Video Coordinator

Available

Calendar Coordinator

Jack Lukins

Letters & Opinion Coordinator

Melkorka Licea

Campus Life Coordinator

Available

Sports & Rec Coordinator

Lewis Mikkelson

Comics Coordinator

Grayson Del Faro

Photo Coordinator

Available

Copy Editors

Aaron Litwak

Page Proofer

Faith Coben

Available

Photographer

Nick Strite

Reporters

Available

Advisor

Dianne Conrad

Associate Advisor

Seth Vincent

Contact

Office

CAB 332

News

(360) 867-6213

Business

(360) 867-6054

Email

cpj@evergreen.edu

The Cooper Point Journal is printed on recycled newsprint using soy ink.

Corrections for Issue 6 February 10, 2011: Photos on Pages one and seven of the Friday night basketball games were taken by Nick Strite. Photo captions on page four were written by Matthew Elswick.

CAB (Continued From Page 1)

still not fully operational.

The televisions were put up without the knowledge of the occupants, and were put up in random places in their rooms, and when some directors raised this issue with the contractors they were told that they should be "grateful" to have televisions at all, despite the fact that they still cannot be programmed.

Mercado also notes that there was no penalty in the contract for the company failing to meet the deadlines, and the only recourse the college has is that it is withholding some of the money owed to the contractor until the renovations are completed.

When asked about the \$40,000 left in the CAB fund Mercado said that obviously he would like to see it go to fixing major problems like leaks in the roof, but also that there are ADA (Americans with Disabilities Act) issues that need to be addressed such as unmarked exit ramps, and the location of push plates.

Questions have arisen surrounding the CAB construction



Controversial new CAB is a work in progress.

Photo: Nick Strite

since before it even began.

In 2006, when students were voting on which CAB design to implement, students were, "encouraged" to vote with gifts of pizza and gift cards when the voter turnout was under the 25% the school hoped for. Eventually plan, "C," the most expensive design (it was supposed to have a waterfall)

won out with 562 votes, leading to that \$6 a credit fee students have been paying since, and will continue to for years to come.

But the CAB redesign only passed by 131 votes, 643 to 512, which calls into question how well this unfinished building really represents the wishes of the student body.

Project manager Azeem Hoosein says that most of the items left to be completed should be fixed by the end of February, but that issues such as the leaks in the KAOS ceiling and the fume hood, which is supposed to protect workers from vapors or dusts, will require further investigation to resolve.

COMPLIANCE (Continued From Page 1)



Photo: Nick Strite

because he was not injured until just after high school. He states the he is "confronted daily with inequalities and is able to identify issues of substantial concerns."

Unfortunately, Rob pointed out that "one of the first things to be cut due to budget restraints was accessibility in the CAB."

Originally, the design of the CAB building included a ramp that would go to all three floors and, in Workman's opinion, would be much more accessible for students and staff with disabilities than elevators. "The problem with elevators is that people have gotten stuck inside, or the light bulbs don't get replaced for weeks."

Constantino, on the other hand, explained that "in that situation, we just have to make the choices that make the most sense with the little amount of money we have left."

In addition, several doors in the new CAB building are either entirely handicapped inaccessible, or have a flawed implementation of the door opening buttons designed to permit wheelchair access.

Though Rob Workman has voiced his concerns with the CAB building on many occasions at GSU meetings and with the Administration, he still feels that only "about 15% of what I originally identified has had a minimal solution."

The doors to the KAOS lobby are among those that have no automatic access panels. While the college is not legally obligated to install this service, the doors are legally required to open with five pounds of pressure.

What do you think of the new CAB building?



Hillary Stevens
Senior

I like it; it's definitely better than having that giant fence in the middle of campus.



Sophie Subira
Freshman

I like the CAB building; it's cool. I like that there's a ton of different food.



Sheri Storino
Senior

Love it, beautiful. Convenient, it's close to everything else. It has plenty to offer for everybody, I think. Plus, I like the quiet room.



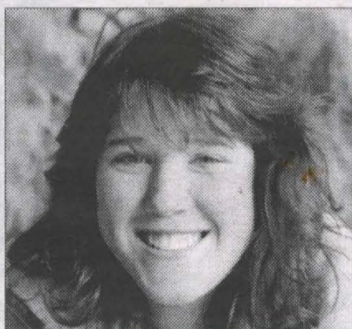
Amelie Alm
Freshman

Well I don't really have anything to compare it to. Most of the food is really shitty, other than the Flaming Eggplant.



Tevis Mahone
Junior

It's kinda square. It's easy. It's accessible. You don't have to go far to get up and down stairs. There are entrances and exits everywhere. I miss the coffee stand being in the library, though.



Emma Peterson
Junior

I like it a lot; I actually work for RAD so I had a lot to do with adding to it. The only thing I dislike is the new Greenery. It's too tight in the seating areas, but other than that, I like it.



Chris Slaymaker
Senior

Not much, I guess. I don't think it's any better than it was before. It looks very computer generated. And the orange panels on the outside, they're kinda weird. I don't like those.



Charlie Niemann
Junior

It looks like an airport, or a mall. My problem with it is that it was announced that they were gonna spend like this million dollar project at the same time as the 2008 financial crisis. Economic crisis + luxury spending... It's idiotic.

CAB: Detailing the deficiencies

Public records list of selected ADA-compliance concerns compiled by Evergreen administration

Concern: No auto door openers in KAOS, CPJ and selected eating areas. (Auto door openers not a requirement; however, ADA requires interior doors meet the 5 lb. force requirement.)
Priority: Low
Location: Multiple locations
Issue: Meets ADA
Results / Action / Comments: Facilities will review and survey doors throughout the building and identify doors that do not comply. Contractor to adjust new doors, shops to adjust existing. Dick to schedule a walk-through to develop a list of new vs. existing doors and if they comply or not. New doors will be calibrated by contractor; existing doors will be calibrated by TESC.
Notes: Assess noted doors for 5 lb. force requirement and recalibrate as needed.
Timeline: Check doors and adjust as needed.

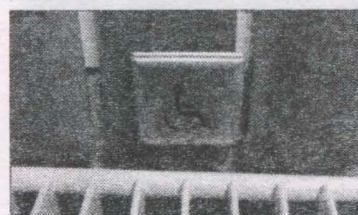


Photo: Erin Finch

Concern: Exterior ramp to Red Square not signed.
Priority: High
Location: On hillside leading to Red Square
Issue: Meets ADA
Results / Action / Comments: Facilities will address
TESC will install signs at top and bottom of ramp.
Upper Ramp will have blue and white Universal Access signs mounted to concrete wall.
Lower Ramp will have blue and white Universal Access sticker mounted to existing light bollard with "To Red Square" sticker mounted below.
Notes: ADA signs to be ordered and installed.
Timeline: Will do.

Concern: Rear staircase door near CPJ side of building has round doorknobs.
Priority: High
Location: All floors
Issue: ADA issue
Results / Action / Comments: Facilities will address. Will do, including re-calibrate interior doors as needed.
Notes: Facilities will change doorknobs.
Timeline: Will do

Concern: Radiator in close proximity to auto door opener plate at the rear door leading to the exterior dining patio. Problem impacts access.
Priority: High
Location: #100A
Issue: Meets ADA, but may be health and safety issue
Results / Action / Comments: Facilities will address; issue impacts access.
Add contractor COP to relocate opener to glass next to door.
Notes: Will be addressed. Possible install a temporary shield.
Timeline: Will do.

Concern: Wall-mounted TV extends more than 4" into path of travel. Bottom edge is below the 80" threshold for compliance.
Priority: High
Location: 2nd Floor
Issue: ADA issue
Results / Action / Comments: Facilities will have architect review and determine correct position. Dick to coordinate.
Notes: Reposition TV or add cane detectable element.
Timeline: Will do.

Concern: Grate in exterior pedestrian path leading to entrance off rear patio. Grate openings measured at 3/4". Grates cannot exceed 1/2" maximum.
Priority: High
Location: 1st Floor exterior walkway
Issue: ADA issue
Results / Action / Comments: Facilities will address. Needs to be replaced by contractor. Dick to coordinate.
Notes: Possible contractor issue. Replace grate with correct size.
Timeline: Will do.

Concern: 34" Eating Bars foot rests block wheel chair access
Priority: High
Location: All floors
Issue: ADA issue
Results / Action / Comments: Facilities will address. Will remove (2) foot-rests in Marketplace, (1) Quiet Lounge & (1) in Greenery, (1) in Flaming Eggplant. Will defer until funding is found.
Notes: Remove 30" section of footrest
Timeline: Will do

Concern: Push plate for auto opener not located close to the Student Activities main office entrance door and difficult to see. Also not operable. Doors blocked open during business hours, providing universal means of access.
Priority: High
Location: #313A
Issue: ADA issue if doors not blocked open during operating hours
Results / Action / Comments: Facilities will address
Notes: Currently, Student Activities staff always block the entrance open during business hours. Also, signage will be added for clearer visibility.
Timeline: Will do



Photo: Erin Finch

Touring Evergreen's vast tunnels

Sabra Chandiwalla
Student Contributor

With unknown banging and clanking, water leakage, poor lighting and temperature changes that vary depending on how close you are to steam pipes, the atmosphere in the underground tunnels of the Utilities Plant is quite eerie. Mike Drennon, the Utility Plant Mechanical Services Manager has been working at the Plant for over 40 years, but has explored the tunnels since he was a child.

Drennon's father helped build the Plant back in the 70's while working for Mort Electric. "[When I was a kid] I used to play in these tunnels." Said Drennon, "We always thought it was really creepy, late at night, in the dark, and our dad could be all the way on the other side of the tunnels." Since the tunnels were originally built without emergency lighting, which remained the case until 15 years ago, after-hour playtime for Drennon meant playing in the dark.

Around 500 to 1200 volts of electricity run through the Plant every day, and in a small field behind the building is the Power poll and broker that feeds electricity to the entire school campus and housing. All the utilities we use on campus - water, electricity, and steam - run through the Utilities Plant. Currently, the plant is negotiating terms with contract companies Pease and Sons and Cole Industries to change all of their pneumatic controls to digital controls. This means that the controls will be switched from air pressure to digital, which will allow the Plant workers to control everything on one single circuit

board. Construction is meant to begin sometime in March.

Leading a tour of the tunnels, Drennon warned of the possibility of crossing paths with a snake or rat. "It's a new development," said Drennon. "We've never had problems with animals getting in before. I don't know where they're coming from."

As for students breaking in, Drennon says that's been happening for years. "Once we found TV's, radios, monitors, computers. Somehow someone found a way to get stolen equipment from Media Loan to here for stashing. We never found out who it was and I still don't know how students break in," Drennon explained while showing us a room where all the power and cable cords go up and out to be distributed among the campus buildings.

Close to the end of the tour, Drennon led the tour to one of the most amazing rooms I have ever seen. In the basement of the Library, connected to the tunnels, is an air ventilation room.

It's lit by one giant light that casts eerie shadows on the floor, there's a steep ladder leading further down into the tunnels, and another giant ladder that's too big and too difficult to try and remove. The instant you walk into the room, air rushes past you, making it nearly the only thing you can hear. As soon as the door closes, the room quiets down a bit but you still have to shout to be heard.

This room was the absolute highlight of my tour, but most aspects of the tunnels are still pretty cool. I highly recommend taking any chance to explore Evergreen's underground tunnels one day.

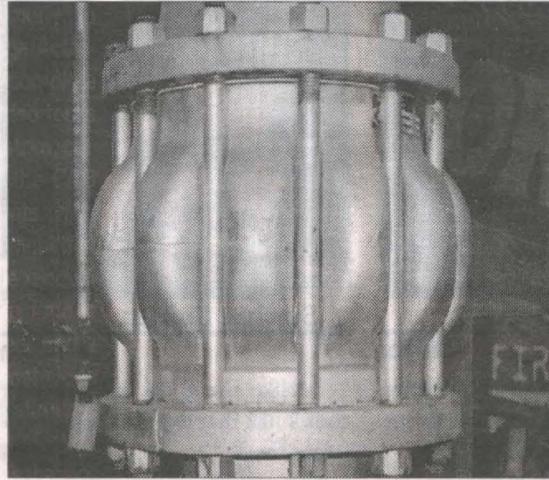


Photo: Galen Radtke

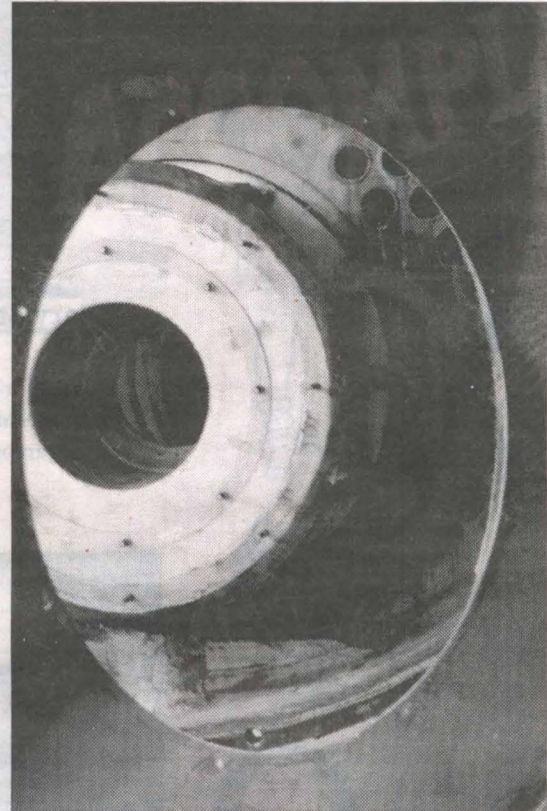


Photo: Galen Radtke

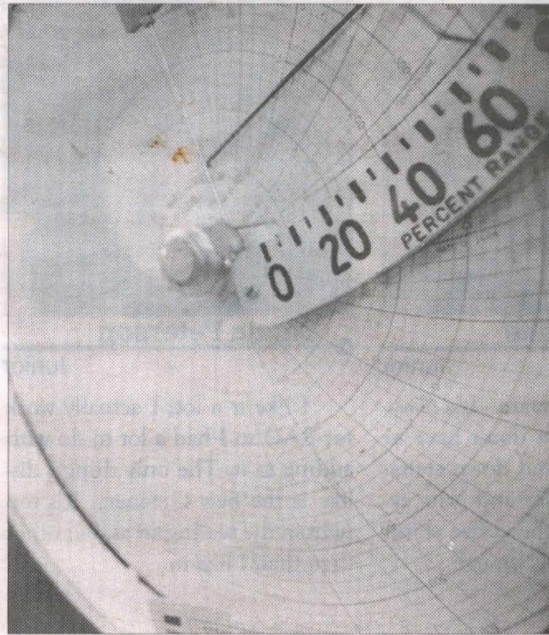


Photo: Galen Radtke



Photo: Galen Radtke

Top left: steel link that traps condensation from traveling tunnels of water. Bottom left: Old air pressure control panels. Top right: passage between two tunnels of air ventilation. Bottom right: Graffiti in the underground

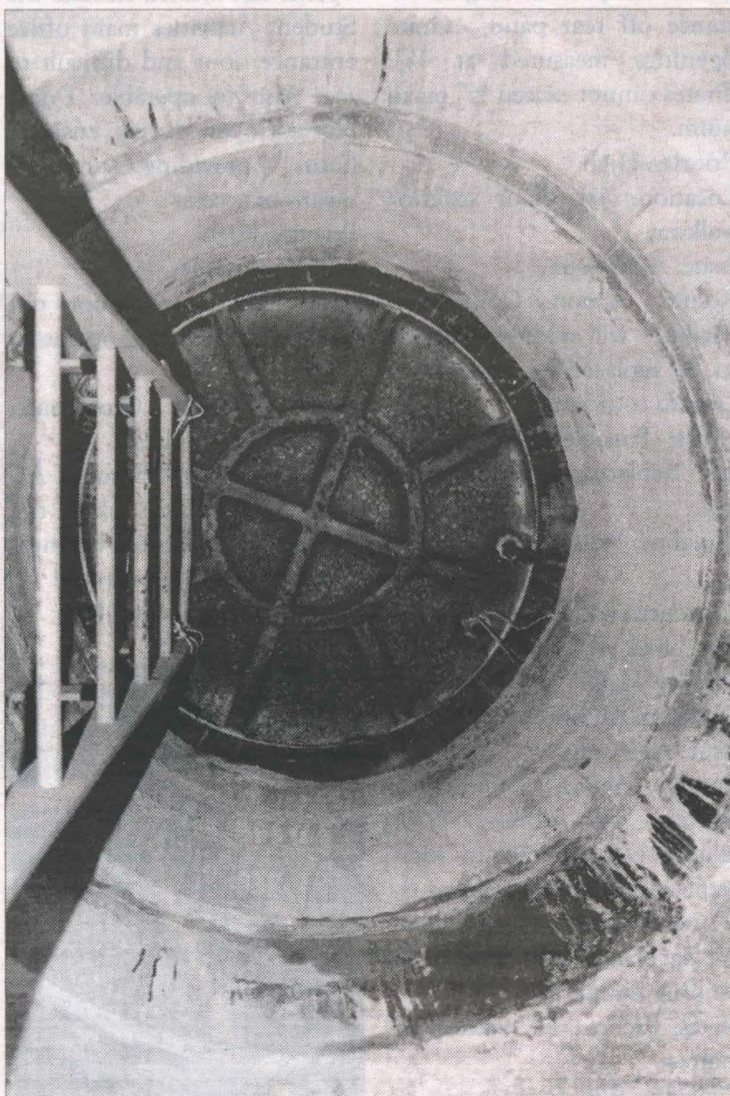


Photo: Galen Radtke

Latter leading to exit from tunnels out to Red Square.

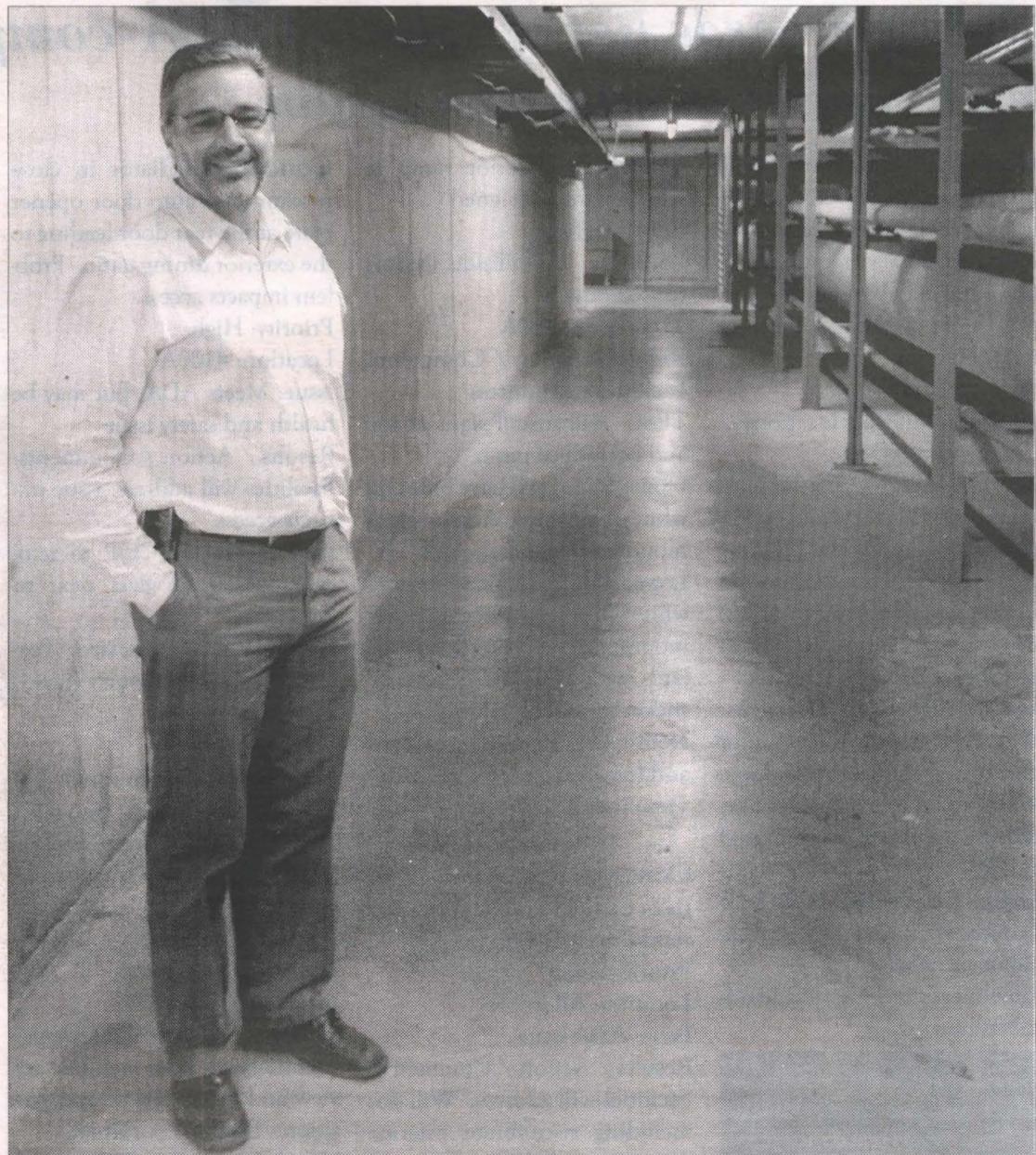


Photo: Galen Radtke

Mike Drennon, Utility Plant Mechanical Services Manager, poses at the entrance to the infamous tunnels under the Evergreen campus. The pipes on the right side include water, air ventilation and heat, while the power lines on the upper lefthand side carry electricity.

Editorial comment by
Erin Finch

On November 17, 2010, the campus administration held a "Grand Reopening" ceremony in the newly renovated College Activities Building. This event, complete with student speakers, guided tours and discounts at the book store, celebrated the completion of the CAB as a space by and for students.

It was no small achievement that we celebrated that day. The renovation process, which began in June of 2009, had taken nearly a year and a half to complete and had cost close to \$20 million. Nearly 1200 students voted in the CAB redesign election held in May 2006, deciding that a renovated, updated CAB building was worth roughly 6 dollars per credit per student for the next 20 years.

The reopening celebrated the fruition of the plans set in motion by Evergreen students and administrators. This building represents years of work by Art Costantino, Vice President for Student Affairs; Les Purse, College President; and John Hurley, Vice President for Finance & Administration, along with countless others, including program directors, contractors, architects and workers.

There's just one problem: it isn't finished.

An extensive list of issues has been brought to the attention of college administration, project manag-



Comic: Morgan Claypool

ers and contractors. Many, perhaps most, of those who use this building's services— including the bookstore, Flaming Eggplant, Student

Activities and KAOS— have lodged numerous complaints about their facilities. One needn't go far to hear about the shortcomings of this new

and improved building.

There are many aspects of the renovation that are both well conceived and well executed. However,

the overall state of the CAB renovation project is unacceptable. It reflects poorly on all parties involved. Let's get it fixed.

The Wider World Screwing over those who serve(d)

Mark Ciccone

Student Contributor

In the latest round of their tireless drive to slash federal spending at any and all levels, the Tea Party, in a recent statement by its leading light, Michele Bachmann (Raw Story, 1/28/10), has begun targeting the defense budget—specifically, those areas devoted to providing financial and health assistance to veterans. Under her proposal, funding for the Department of Veterans Affairs (VA) would be frozen at current levels, and close to \$4.5 billion in disability and other medical benefits would be eliminated.

At the same time, Bachmann and other TP leaders maintain their support for the multi-trillion dollar wars in Afghanistan and Iraq, and push for hawkish foreign policy whenever and wherever possible. Setting aside the morality of both wars for a moment, anyone with common sense, whether an armchair general or an experienced professional, would acknowledge that cutting military funding of any sort in a time of two wars and constant anti-insurgency campaigns is nothing short of idiocy. Yet, as has already been shown, the Tea Party is not renowned for sanity or long-term planning, two essential parts of governance. To get a better impression of how their relentless, hypocritical drive to cut benefits and spending stands to harm those who have served and suffered on behalf of the people, nation and government the TP claims to represent, I spoke with several Olympia-area veterans—many of whom are also Evergreen graduates.

Joshua Simpson, Iraq veteran and



co-founder of the Coffee Strong veteran support group in Lakewood, WA (<http://www.coffeestrong.org/>), described in detail that the neoconservatives currently dominating both the GOP and TP are the ones who are "the most adamant to spread war, and to cut veteran benefits at the same time," stating that the real costs of war—mental and physical—"comes after 10 or 20 years" for most vets. Simpson concluded, "Therefore, it is vital to end wars now, to avert them."

Dianne Lehnerd, the spouse of an active-duty Iraq vet currently stationed at Fort Lewis, vehemently expressed her disagreement with even the idea of such cuts. Describing how difficult it already is for her husband to receive medical care for suspected respiratory problems, which possibly endanger his chances of an honorable discharge at the end of his term or service. She stated, "If they [the Right] want to save money, they need to stop making disabled vets."

Article continued online at
WWW.COOPERPOINTJOURNAL.COM

Letter to the editor:

To whom it may concern,

My name is Andrea Porcelain and I've been living in Olympia for two years, going to Evergreen since this fall. This quarter I have been working on an independent learning contract where I integrate the Hebrew language with yoga practice. When I came to Evergreen, I expected an environment much like my alternative high school, where students would be accepting of other cultures and the campus environment would be welcoming. I expected the faculty would be trained for a diverse climate with students from all backgrounds.



Photo: Erin Finch

What I experienced was something different. The environment seemed hostile towards my Jewish-American heritage. Evergreen's student body and atmosphere feels one-sided and aggressive, and does not seem to promote dialogue. The Flaming Eggplant Cafe had an art installation with a quote that reads "Hebrew has become the language of abuse." Reading this, I felt self-conscious, attacked, and ashamed to be of Hebrew origin, and especially publicly at Evergreen. This attitude of generalizing and dehumanizing my religion and culture is not compatible with my educational process.

This installment illustrates that students on campus don't learn to distinguish between Judaism, Israel, its government, and its people. This attitude breeds ignorance regarding an ancient language. It cannot be ignored because it prevents peaceful dialogue. Faculty and other students avoid dialogue altogether regarding this subject with me, because this kind of rhetoric leaves no room for it.

Worldwide, and throughout history, Jewish people have been exiled, persecuted and massacred. After the dissolution of the Soviet Union many Russian Jews emigrated to the U.S. and Israel because of intense anti-Semitism. The existence of a Jewish homeland is crucial at times like these. Israel needs to exist when there is no Jewish home. Jewish-Americans are already estranged from their roots, and aggressive words deepen this disconnect.

At the bus stop, I hear other students saying the Israelis and Jewish people on campus are "victimizers". I have seen a political cartoon with a star of David on a tank, with an Arab-looking man poised in front. This suggests Jews do not like Muslims, but there are places where we live together in peace. This is a further example of how students on campus don't differentiate a government from a religion. Judaism and the belief in Israel are connected like the ceremonial stance in a Native American ceremony. I was taught by the Lakota people that during their ceremony, I should stand in order to be present with the Creator and that my posture is reflective of prayer. When I practice Judaism, Israel is interconnected with prayer. I want to preserve my culture, and that's not something I can do on campus. It is well known in the Jewish community of Washington that a handful of students have left Evergreen because the anti-Israeli sentiments have alienated them. After less than half a year here, I will become one of them.

Sincerely,
Andrea Porcelain

2011 presents the eleventh annual ChibiChibiCon

Kent Reister

Student Contributor

Geocon was dead to begin with. There is no doubt whatsoever about that. The register of its burial was signed by the Gaming Guild, the Giant Robot Appreciation Society, and many of the others that had held it aloft. It had grown too large for simple student groups to handle.

But alas, there was a successor of sorts. And thus CHIBICHIBI CON was born. The lowly Japanese Animation showing room at Geocon had grown into a convention of its own. Feb. 19 will mark the 11th such convention.

The Student Video Gamers Alliance will host a video game room all day long. Also, the Gaming Guild will run role-playing games, board games and card games. Even the Flaming Eggplant will stay open all day.

Meanwhile, every lecture hall will be filled with Japanese cartoons for the young and old alike. And the library lobby will be filled

with vendors carrying a great many nerdy and geeky wares including clothing, toys, games, collectibles, books, movies, and works of art.

Indeed, this year will boast our largest vendor hall yet. But certainly we mustn't forget the Cosplayers!

Oh, the Cosplayers. They come in droves to show off their intricately crafted costumes. Costumes of soldiers, school girls, and monsters, bounty hunters, aliens and robots, heroes, legends, martial artists and even the tiny Pokémon.

Generation Friends will certainly bring some laughs with their zany antics, skits and improv. Both anime-related and not, they are sure to entertain. Like Mystery Science Theater 3000? Generation Friends will poke, prod, and jeer at that racy piece of hogwash "Words Worth" for your viewing pleasure.

And who can forget the end-of-convention celebration, The Dance? A mixer with provided food for nerds and geeks alike to



Vendors and Cosplayers participating in ChibiChibiCon 2010.

Photo: Ross Carras

come together, celebrating the end of the convention festivities.

Every year, convention-goers leave with smiling faces. Having witnessed a kendo demonstration, an anime-themed Jeopardy

game, a telling of the history of the ninja, or even a mock-dating-game show in costumes, only an anime Grinch wouldn't have their spirits spirited away.

So come to ChibiChibiCon

to get your nerd on in the Library Lobby, the CAB, and the Lecture Halls, from 10 a.m. to midnight on Saturday, Feb. 19.

For more information, visit CHIBICHIBICON.net.

Gettin' regigulous

Melkorka Licea

CPJ Staff

If there was ever an occasion to go to the Vault, it would be to see E40 live in Olympia. Doors opened at 8pm with strict enforcement of ID: 18 to enter and 21 for bar access. The crowd was ready to get down: ladies decked out in mini-dresses and high heels, and guys wearing iced swag (thoroughly cleaned shoes).

The smoking area was buzzing with excitement as everyone shared their own personal E40 experiences, including their preference for his early work, which seemed to be the general consensus. After a game of pool and a few cups of water (the place can't avoid feeling sweaty) the opening act, "2.0", came onstage around 10 p.m.

Their flow was relaxed but kept the crowd engaged, reaching out to the young ladies at the front and allowing a few special ones onstage to shake their booties: entertainment at its best. They wrapped up around 11 p.m. and kept us on the edge of our seats... or should I say, "feets" ... waiting for the man of the hour: E40.

The 43-year old Bay Area rapper who's been in the game since 1986 rolled onto the stage with utter smoothness. The crowd reflected his coined term "hyphy" to a tee as he pointed the microphone towards the gushing women (myself included). "I wanna be saaaaved!"

"It was awesome, but short," stated student Wayman Irwin, a former resident of the Bay Area. E40's set lasted from about 12:30-1:30 a.m. "It was a showcase of social styles," stated illiterating CPJ member Paul Williams, com-

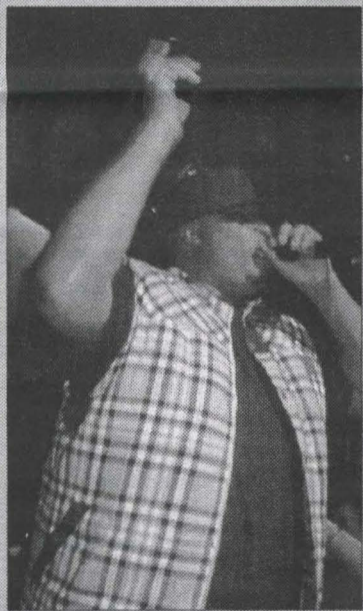


Photo: Melkorka Licea

E-40 raps at The Vault Friday, 11 Feb.

menting on the assorted array of attendees.

Though E40 has been a rapper since the late 1980's, his name has been highly respected for many years, but he still plays rather small venues.

Some of the various artists that E40 has recorded with include Akon, B-Legit, Mac Dre, Snoop Dogg, Tupac and many more. He started his career with his cousin B-Legit and his sister Suga-T in a group called The Click, spawning a hit entitled "Captain Save a Hoe". He has since released other solo hits including "You and Dat" and "Tell Me When To Go," both of which he belted out at the venue.

The audience proved themselves E40 fans, as the words to his songs were repeated word for word. Their smiles were fierce, their energy electric, and their mood satisfied. E40 fulfilled the crowd's craving for a fast-paced and highly involved performance.

MIDEAST FILM FESTIVAL MIDEAST FILM FESTIVAL MIDEAST FILM FESTIVAL MIDEAST FILM FESTIVAL MIDEAST FILM FESTIVAL

8th Annual
Mideast
Film Festival

FEBRUARY 15-23, 2011
THE EVERGREEN STATE COLLEGE

FEATURING PALESTINIAN JOURNALISTS LAILA EL-HADDAD AND RAMZY BAROUD, HATEM ABUDAYYEH OF THE ARAB AMERICAN ACTION NETWORK, INVINCIBLE - DETROIT, LOCAL FILMMAKERS JEN MARLOWE (ONE FAMILY IN GAZA), JOHAN GENBERG (CHALLENGING POWER), EVERGREEN STUDENT KYLE LUDOWITZ (LIFE ON WHEELS), ISRAELI-AMERICAN FILMMAKER, ACTIVIST AND EVERGREEN ALUM RACHEL LEAH JONES, AND MUCH MORE...

FILM FESTIVAL RECEPTION SAT. FEB 19TH
AT THE CAPITOL THEATER.

OTHER EVENTS AT THE TACOMA CAMPUS.

FIND THE COMPLETE SCHEDULE AT
HTTP://FILMFESTMIDEASTSOLIDARITY.ORG
AND IN THE S/A OFFICE AT THE EVERGREEN
STATE COLLEGE

Df
The Evergreen State College
The Arab American Action Network

Rachel Corrie
Foundation for Peace & Justice

IF ACCOMODATION IS REQUIRED FOR THIS EVENT, PLEASE CONTACT STUDENT ACTIVITIES WITH REASONABLE ADVANCE NOTICE BY EMAILING STUDENTACTIVITIES@EVERGREEN.EDU OR BY CALLING 360-867-6220 OR 360-867-6334 (TTY).

MIDEAST FILM FESTIVAL MIDEAST FILM FESTIVAL MIDEAST FILM FESTIVAL MIDEAST FILM FESTIVAL MIDEAST FILM FESTIVAL

Mountain bike club conquers mountains and more

Jack Lukins

CPJ Staff

Mountain biking is the ultimate thrill: the unique opportunity to mix adrenaline-inducing speed with the spectacular views offered by travelling off the beaten path has drawn people as long as bicycles have been around. But it wasn't until the late 1970's that bike companies began to design their own lines of mountain bikes for production, and in 1981 the "Stumpjumper" became the first major production mountain bike. Since then, the support has developed a loyal following of bikers from all background and locales. The Northwest in particular has been a haven for mountain biking because of its large forests, mountainous topography, and countless trails.

And now, thanks to an enterprising group of freshmen, Evergreen has their own mountain biking club. Ryan Stickley, Cam Sloan, Finn Hopper, and Max Hoffman wanted to start a club for people with a shared interest in finding and riding trails in the area. The club is for people with all levels of experience—the coordinators themselves ranging from 3 to 10 years of riding experience—and the club is even planning on buying bikes to loan out.

All avid bikers, the four coordinators met over the first few weeks of fall quarter, and started

going on rides together on campus, around Olympia, and at spots like Rock Candy Mountain and Capitol Forest. The idea for a mountain biking club had been on all of their minds. Hoffman even said, "I thought there was one." But Hopper and Sloan began the initial planning soon after meeting and riding during orientation week.

The group started looking into the process of forming a club, and found out that the College Recreation Center has been working to bring back the cancelled outdoor program. After being shut down for several years, the CRC has dedicated itself to launching a program which encourages, funds, and supports clubs focusing on outdoor recreation. The bike club was recently added as an official organization and those looking to start outdoor clubs of their own are encouraged to look into forming an official organization through the CRC.

To join the bike club, you can just show up to one of their meetings at the bike shop on Wednesdays at 6 o'clock. The meetings can be as long as an hour, but Hopper laughingly pointed out that they rarely run later than 6:30. When asked if someone of any skill level could join, all four coordinators emphatically responded "Yes" and "Absolutely." And Hoffman added, "We encourage it."

The group will be using part of the budget they hope to receive as a club to purchase bikes for people who want to give mountain biking a try. They will also help train beginners, take them on rides, and suggest spots in the area where they can practice. The club is of course open to more experienced riders as well, who will not only find people to ride with, but also information about trails in the area and a forum to share their love of biking. The group is also planning on using Evergreen vans to take members on rides in Washington and Oregon, and should vans be unavailable they hope to arrange other means of transportation to facilitate group rides.

The risks associated with the sport have prevented many people from participating, and the group acknowledges that there is a potential for injury. In fact, both Sloan and Stickley have injured themselves in the time they've been at Evergreen. But all of them are quick to point out that, with proper gear, planning, and a little common sense, most major injuries can be avoided, and they all believe that the payoff is worth the potential risks.

Hoffman thought for a moment about why he rides before saying, "Because I've never found anything more fun," at which all of them nodded knowingly. Mountain biking is one of the



Photo: Max Hoffman

He's not always able to bike on an actual mountain, but Ryan Stickley finds ways to perform sweet stunts on campus anyway.

most exhilarating sports on the planet. Whether you are a seasoned rider, or you've never been on anything more than a tricycle,

the Evergreen Mountain Biking Club exists to help you experience it.

Geoduck women 0-2 in Portland, Ore.



Photo: Darren Woods

Number 23, Latrina Woods attempts a layup against Warner Pacific College on Saturday, January 15, when the two played at Evergreen. Woods finished the game with a team high of 19 points and six rebounds.

Darren Woods

Student Contributor

Facing Cascade Collegiate Conference rivals Warner Pacific College and Concordia University, the Evergreen Women's team went winless in their last trip of the season.

On Friday night, the Geoducks (3-13, 9th), led off a CCC double header as they and Warner Pacific (9-7, 4th) met for the second time this season.

The Geoducks won at home in the team's first meeting of the season but were not as fortunate the second time, falling to WPC 64-51 in Portland.

Evergreen State led by as much as nine points in the second half but

were not able to hold on to their lead as the Knights crept back into the game and eventually put the Geoducks away.

Seniors LaTrina Woods and Vanessa Caskey had 10 points apiece in the loss.

The following day, the lady Geoducks were not able to reverse their fortune at No. 2 Concordia University.

After jumping out to a nine point lead before halftime, Concordia (12-4, 2nd) did not let up and outscored Evergreen 38-15 in the second half, eventually winning by an 80-48 margin.

Redshirt freshman Danielle Swain shot a near flawless 8-10 from the field, recording 19 points and

pulling down nine boards.

LaTrina Woods followed up her performance from Friday with a nine point, 11 rebound game vs. Concordia, just one point shy of a double-double.

The Geoducks, now mathematically eliminated from playoff contention, have shown glimpses of greatness throughout the season and have a chance to end their season on a good note.

They host College of Idaho (9-7, 5th) and Eastern Oregon University (8-8, 6th). The Geoducks will also be saying goodbye to seniors LaTrina Woods, Cambria Smith and Vanessa Caskey Saturday night vs. Eastern Oregon at 5:30 in the CRC Gymnasium.

Evergreen still playoff bound?

Darren Woods

Student Contributor

The Evergreen men's basketball team's playoff hopes took a severe hit last weekend in Portland, Oregon as they dropped both games on their last road trip of the regular season.

The Geoducks fell from seventh place in the conference to ninth as a result of the rough weekend.

The Cascade Collegiate Conference only takes eight teams to the playoffs and as it stands, with just two games remaining in the regular season, Evergreen had trouble adapting to Warner Pacific's 2-3 zone defense.

The first time Warner Pacific College and Evergreen went head to head this season, Evergreen had trouble adapting to Warner Pacific's 2-3 zone defense.

On Friday night, the Geoducks (5-11, 9th) again were not able to find answers to the zone defense and fell to WPC (11-5, 4th) in a lopsided 86-65 affair.

Offensively Evergreen struggled to score, shooting just 36 percent from the field compared to Warner Pacific's 57 percent.

The Knights also won the battle on the inside outrebounding the Geoducks 38-34 and scoring 48 points to Evergreen's 26.

Patrick Lewis led Evergreen

with 15 points while Marice Tolliver scored 14 points of his own.

No other Evergreen State player scored in double-digit figures.

On Saturday night the Geoducks suffered a similar fate, this time at the hands of conference rival Concordia University.

Concordia (5-11, 8th) prevailed 88-76, avenging the loss Evergreen handed them earlier in the season in Olympia.

In this match-up, the Geoducks got off to a sluggish start as they went into halftime down 40-29.

Head coach Arvin Mosley inspired his team during the intermission and within the first five minutes of the second half the Geoducks had tied the game at 42.

The teams would duke it out but the Cavs were able to keep Evergreen at bay.

The Geoducks, led by Josh Troyer's 20 points, had five players score 10+ points including freshman Mikey Hope's 14 points on 6 of 13 shooting from the field.

All is not lost for the tried Evergreen Geoducks, they have a chance at two wins this Friday and Saturday as they host College of Idaho (9-7, 5th) and Eastern Oregon University (12-4, 2nd) at 7:30pm in their last two games of the regular season with the latter game slated as Evergreen's Senior Night.

Thursday 17

Mideast Film Festival 5:00pm-9:00pm Lecture Hall 3
 Films: Tale of Existence, To Know is Not Enough
 Speaker: Hatem Abudayyeh

Friday 18

Mideast Film Festival 12:00pm-1:00pm Sem 2 A1105
 Speaker: Robert Naiman

Mideast Film Festival 4:00pm-9:00pm Lecture Hall 3
 Films and Speakers

Old Oly Time Festival 11:00am-4:00pm Sem 2 C1105, C2107, C2105, C2109, C3107, C3105

Geoduck Women's Basketball 5:30pm-7:00pm CRC

Geoduck Men's Basketball 7:30pm-9:00pm CRC

Saturday 19

Mideast Film Festival 7:00pm-11:00pm Capitol Theater
 Film Festival Reception

Chibi Chibi Con 8:00am-11:00pm LH 1-5, Rotunda, Sem 2 A1105, A2105, A3105, A3109, C1007, LIB lobby 2200, 3000, LIB 1001, 1003, 1005, 1540, 1326

Old Oly Time Festival 11:00am-5:00pm Sem 2 D2109, D2105, D1105, D1107, D2107

Geoduck Women's Basketball 5:30pm-7:00pm CRC

Geoduck Men's Basketball 7:30pm-9:00pm CRC

Sunday 20

Mideast Film Festival 2:00pm-4:00pm Lecture Hall 3
 Film: Takva

Mideast Film Festival 6:30pm-10:00 pm Traditions Cafe
 Films: Life on Wheels, and Occupation Has no Future

Monday 21

Mideast Film Festival 7:00pm-9:00pm Orca Books
 Speaker: Laila el-Haddad

Tuesday 22

Mideast Film Festival 5:00pm-10:00pm
 Films, The Maid, Women Without Men, The Mafi Principal of global Hegemony

Wednesday 23

Mideast film Festival 3:00pm-4:00pm Lecture Hall 3
 Film: The Secret world

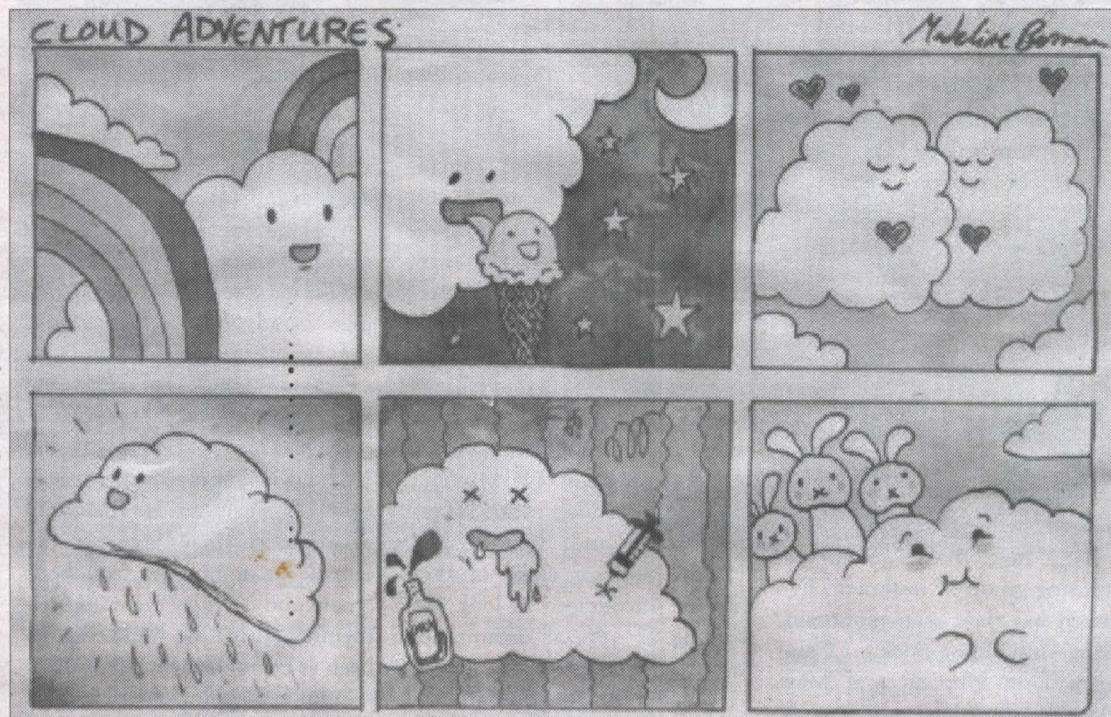
Mideast Film Festival 6:30pm-9:00pm Lecture Hall 3
 Film and Speakers: Tunnel Trade, Laila el-Haddad, Ramzy Baroud

Bicycle Maintenance Class: Hubs and Freewheels 4:00pm-6:00pm
 CAB 135 (Bike Shop)

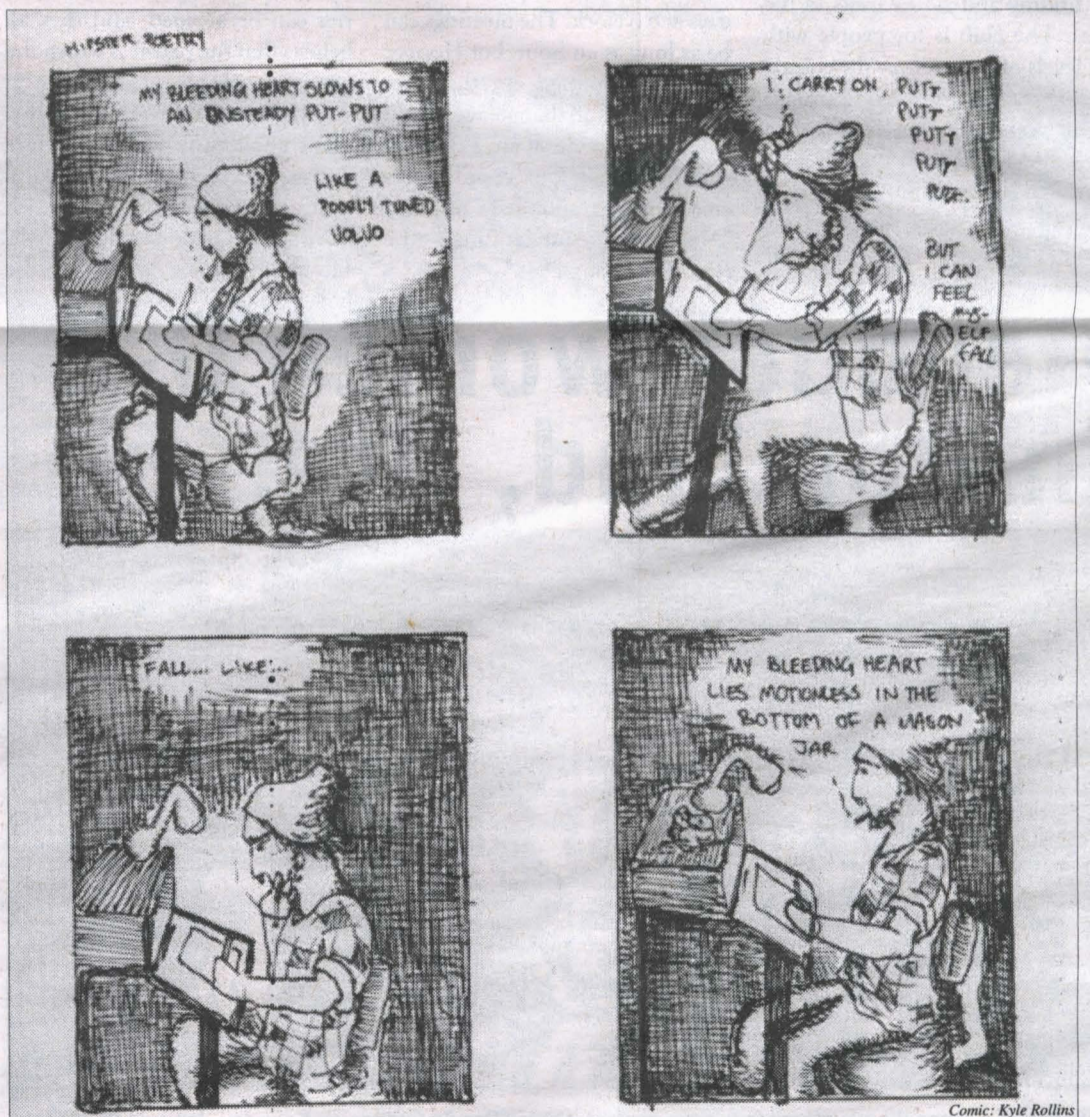
Black History Month Film Series: Ali 6:30pm-8:30pm Sem 2 C1107



Comic: Grayson Del Faro



Comic: Madeline Berman



Comic: Kyle Rollins



Comic: Sam Bourman-Karns