



STUDENT NEWSPAPER OF THE EVERGREEN STATE COLLEGE

ELECTIONS!
The CPJ Elections reporter keeps you updated about the ins and outs of the Oval-Bound Trail 2008 ▶ **PAGE 5**

HE'S GOT THE HONEY
Read about the artist Redbear., an Evergreen musician who might not eat salmon ▶ **PAGE 9**

BEHIND EVERGREEN SPORTS
An interview with track and field, cross country coach Craig Dickson ▶ **PAGES 12**

DON'T BE A SQUARE!
Read the comics. For seriously. They are funny. And they make you cool. ▶ **PAGES 14 & 15**

CONTRIBUTE TO THE COOPER POINT JOURNAL. CALL 360 867-6213, EMAIL CPJ@EVERGREEN.EDU OR STOP BY CAB 316 • ISSUE 13, VOLUME 36, JANUARY 24, 2008

Student conduct code revision

Invitation for student input on grievance process

by SETH VINCENT

Each day, grievance officer Andrea Seabert-Olsen is confronted by a new problem: what should the consequences be for a student that violates our school's student conduct code?

This quarter you will have an opportunity to provide input on that process, from definitions of offenses to types of consequences, with the revision of Evergreen's student conduct code, which hasn't been revised in 10 years.

With each new case, Seabert-Olsen works with students to come to an agreement about what happens next: you might get probation, a fine, be required to take a drug and alcohol information class or do community service.

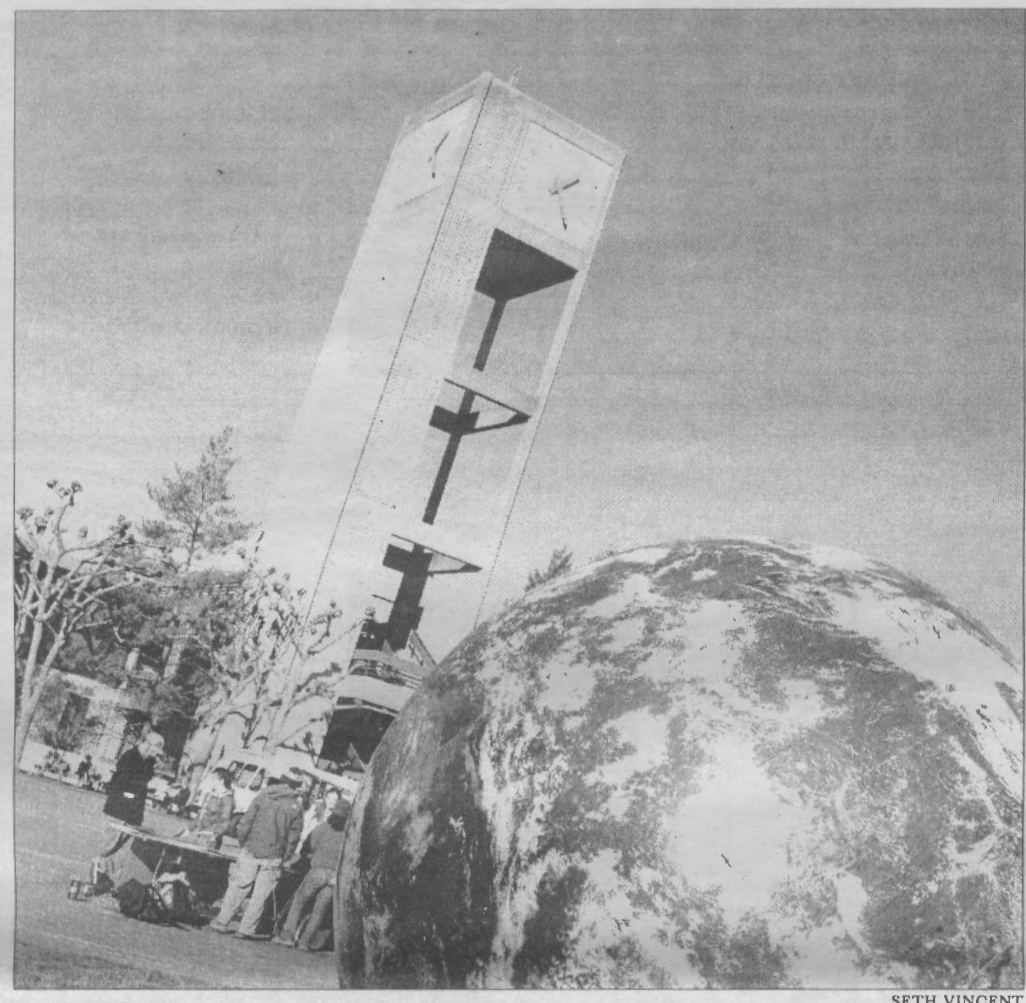
And there are other possible solutions, which can be combined and defined as you and Seabert-Olsen best see fit. "Things are really taken on a case-by-case basis," said Seabert-Olsen.

And with each case, the consequences of an offense can vary depending on its severity, whether it is a first-time offense, the mindset of the student that committed the offense, and a number of other variables.

"That's probably one of the most difficult parts of the grievance officer's job," said Joe Tougas, a faculty member and former grievance officer. "How do you (decide upon consequences) in a way

see **TASK FORCE**, page 4

Global climate looms over Red Square



SETH VINCENT

STUDENTS TABLE ABOUT CLIMATE CHANGE IN THE SHADOW OF THE GLOBE

by GAVIN DAHL

"Action is good," Schuyler Timmons told fellow students Tuesday in front of a giant inflatable globe on Red Square. "We're trying to get people to organize around climate change, that's what this network is all about." Timmons was referring to the Cascade Climate Network (CCN), a regional collaboration of student environmental activists who have already built a coalition on 18 campuses in Oregon and Washington.

In addition to tabling with literature for a

variety of environmental groups, Timmons and other organizers were gathering student signatures in support of the Cascade Climate Declaration. Written by students from 10 regional schools during a weekend summit in October of last year, the Declaration is allegedly the first document of its kind, written for students by students.

The Cascade Climate Declaration presents principals including a focus on energy efficiency, further development of renewable

see **CLIMATE**, page 4

Downtown in deep water

Four feet of sea level rise predicted by recent report

by AMBER CARVER

The Port of Olympia Marine Terminal may some day be under water, along with much of 4th Avenue and the area in between. Other areas may be marred by standing pools of water, and salt water may infiltrate McAllister Springs, one of Olympia's primary sources of drinking water.

These are all possible outcomes of sea level rise (SLR). Evidence suggests that SLR is inevitable; the only question is: how high will it reach?

The University of Washington Climate Impacts Group and the Washington Department of Ecology set out to answer that question, and the result is an eleven page report – "Sea Level Rise in the Coastal Waters of Washington State" – which was released earlier this month.

The conclusion? The water level in the Puget Sound could rise by as much as 50 inches – over four feet – by the end of the century.

The report was released in response to inquiries from municipalities, consultants, and citizens who were concerned about SLR and wanted to know how it might affect Washington.

Several regions are addressed in the report: The Olympic Peninsula, the central and southern Washington coast, and the Puget Sound. While tectonic uplift may offset SLR to a certain extent in other regions, the Puget Sound has no such luck. It will experience the greatest SLR, according to the report.

There are many factors involved in SLR, and no one is sure how it will play out. The report provides both low and high estimates for SLR, adjusting global SLR estimates from the International Panel on Climate Change for unexpectedly high ice loss from Greenland and Antarctica, local patterns in atmospheric circulation, and local geological processes.

The report concludes that, at the very least, the Puget Sound water level will rise 3 inches by 2050 and 6 inches by 2100, with a moderate

see **SEA LEVEL**, page 3

QUIET RIOT

Student, police conflict largely unreported by Police Services, Student Affairs office

MEMBERS OF THE CAMPUS COMMUNITY STILL REMAIN UNAWARE OF MANY OF THE DETAILS.

by JASON SLOTKIN

Few have heard of the student that was arrested on December 5, 2007 – except the 15 to 30 fellow students that confronted police in front of Seminar I just minutes after the arrest.

Around midnight, Officer Susan Hassinger noticed a student walking into B Dorm, lit cigarette in his hand. "Is that a cigarette?" she asked. The student didn't seem to notice her. She instructed him to

put out the cigarette. The student tossed the cigarette into the bushes.

Hassinger asked for the student's identification. The student refused, and what started out as a request turned into an arrest. The student, according to police chief Ed Sorger, was in a stance that officer Hassinger felt threatened by. According to the police report, students began to gather around the scene that played out.

see **CONFLICT**, page 3

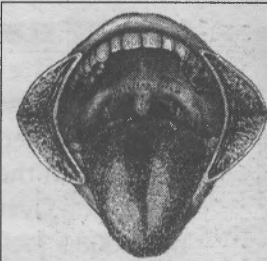
THE COOPER POINT JOURNAL IS A FREE, WEEKLY STUDENT NEWSPAPER THAT SERVES THE EVERGREEN STATE COLLEGE AND THE SURROUNDING COMMUNITY OF OLYMPIA, WASHINGTON.

TESC
Olympia, WA 98505

Address Service Requested

PRSR STD
US Postage
Paid
Olympia WA
Permit #65

vox pop



Can you tell me about the confrontation between students and police services on the night of December 5, 2007? Do you think incidents like these are something students should be informed about?

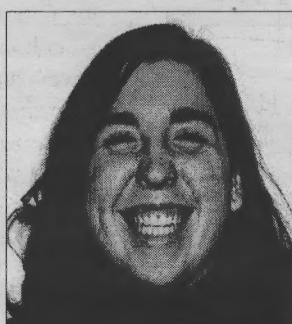
by BRANDON CUSTY

**The incident this week's Vox Pop questions refer to is discussed in Jason Slotkin's article on page 1.*



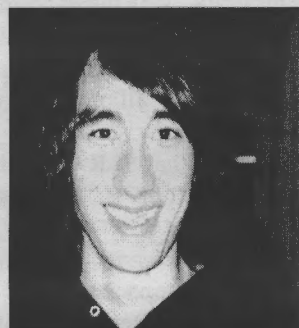
"It'd be nice to know what happened, because there are a lot of rumors."

Cameron Hostetter



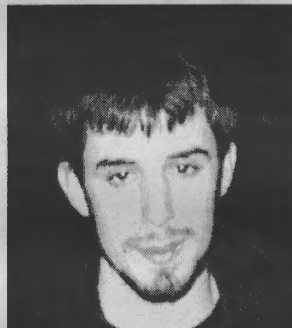
"I think people should be informed about those kind of events. I think some students were and still are processing the port experience. That could increase hostility."

Phoebe Moore



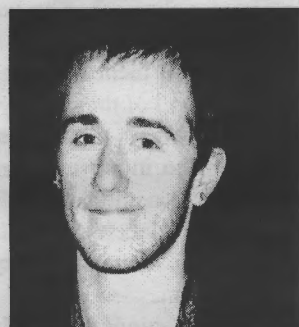
"I heard a bunch of screaming. I thought it was kids in a fight."
"I think if he would've cooperated, nothing would've happened."

Steven Chen



"Something that small doesn't seem like it's that important"

Alec Hannes



"I think it might have been a little excessive."
"It's kind of hard to get an unbiased story...If it affects a fellow student, students should know about it."

Andrew Regan



"If everyone knows about current events on campus, it builds community."

Danielle Stewart

Have a Vox Pop question you'd like to see asked? Email it to cpj@evergreen.edu.

Student Group Meeting 5 p.m. Monday

Find out what it means to be a member of the student group CPJ.

1 p.m. Wednesday

Discussion on issues related to journalism.

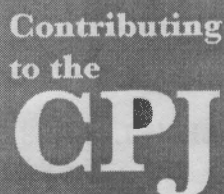
Post Mortem & Issue Planning 5 p.m. Thursday

Critique the last issue of the CPJ and help plan for the next one.

Brown Bag Forum noon Friday

Lecture and seminar related to issues surrounding journalism and the CPJ.

All meetings are held in CAB 316



The content of The Cooper Point Journal is created entirely by Evergreen students. Contribute today.

The Cooper Point Journal is written, edited and distributed by students enrolled at The Evergreen State College, who are solely responsible for its production and content. It is published 28 Thursdays each academic year, when class is in session: the first through the 10th Thursday of Fall Quarter and the second through the 10th Thursday of Winter and Spring Quarters.

Copies of submission and publication criteria for non-advertising content are available in CAB 316, or by request at (360) 867-6213. Contributions are accepted at CAB 316 or by email at cpj@evergreen.edu. The CPJ editor-in-chief has final say on the acceptance or rejection of all non-advertising content.

is distributed free at various sites on The Evergreen State College campus. Distribution is limited to one copy per edition per person. Persons in need of more than one copy should contact the CPJ business manager in CAB 316 or at (360) 867-6054 to arrange for multiple copies. The business manager may charge 75 cents for each copy after the first. Terms and conditions are available in CAB 316, or by request at (360) 867-6054.



Business

Business manager
Cerise Palmanteer

Assistant business manager
Carrie Ramsdell

Ad proofer
Alex Morley

Ad representative
Josh Katz

Circulation manager
Gavin Dahl

Distribution manager
Sarah Alexander

News

Editor-in-chief
Seth Vincent

Managing editor
David Raileanu

Arts & Entertainment coordinator
Brandon Custy

Calendar coordinator
available

Comics coordinator
Tabitha Brown

Copy editor
available

Copy editor
Charles Asner

Letters & Opinions coordinator
available

Photo coordinator
Belinda Man

Sports coordinator
Zach Licht

Student Voice coordinator
available

Reporter
Amber Carver

Reporter
Jason Slotkin

Page Designer
Joel Morley

Page Designer
Bryn Harris

Advisor
Dianne Conrad

Call the Cooper Point Journal if you are interested in any of the available positions listed above.

Cooper Point Journal
CAB 316

News: (360) 867 - 6213

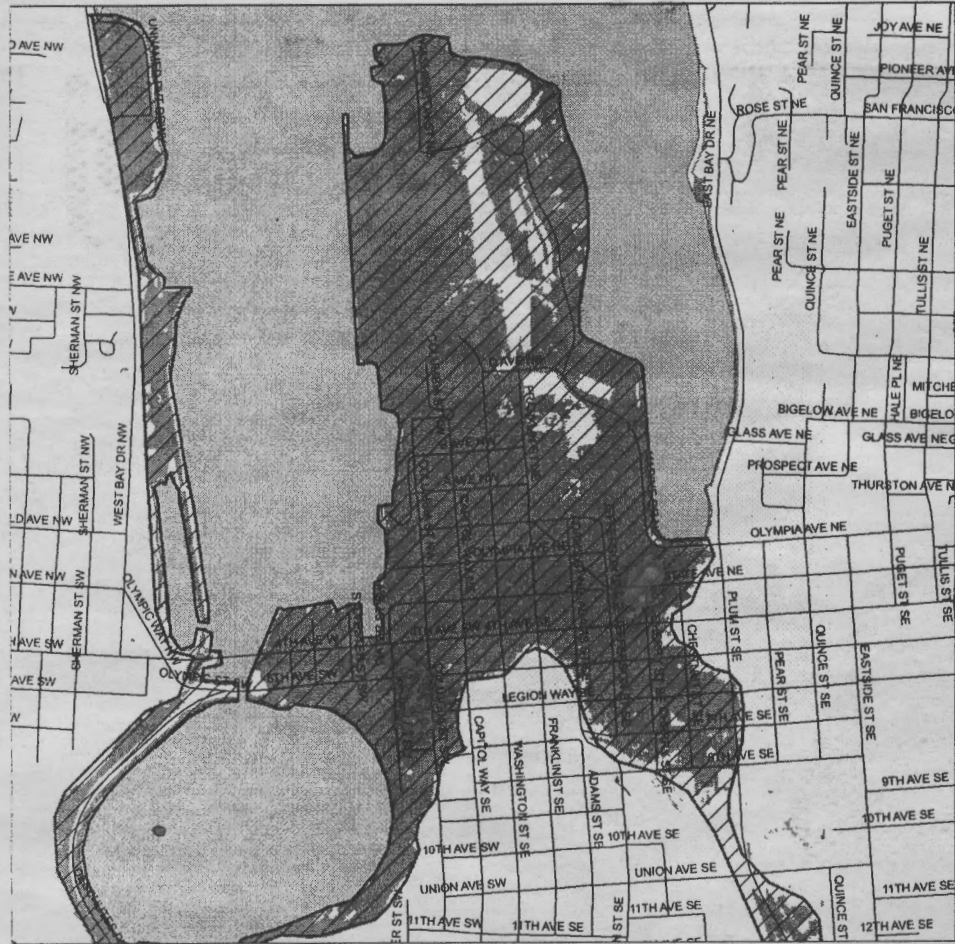
Email: cpj@evergreen.edu

Business: (360) 867 - 6054

Email: cpjbiz@evergreen.edu



The CPJ is printed on recycled newsprint using soy ink.



HIGHER GROUND
A proposed model for the amount of sea level rise for downtown Olympia.

SEA LEVEL, from cover

estimate of 6 inches and 13 inches respectively. In the worst case scenario, the sea level could rise by as much as 22 inches by 2050 and 50 inches by 2100.

While the report offers fresh estimates, it doesn't tell locals much that they didn't know already. SLR has been a subject of much debate and planning for many years, and these new figures simply add another log to the fire.

The City of Olympia conducted its first assessment of vulnerability to climate change in 1993 and shortly thereafter passed Resolution 1306, which committed the City to a long-term strategy to reduce greenhouse gas emissions, increase tree cover and prepare for climate change, according to an article written by Vince McGowan, Senior Program Specialist for Public Works.

The issue again took the spotlight in October 2007. During the Olympia mayoral contest, candidates were asked to share their plans for addressing the possible effects of SLR on downtown Olympia. Future mayor Doug Mah acknowledged the importance of the issue. "We're going to find ways to address this issue just like we have always be able to do throughout

the history," he said, but he offered no specific suggestions.

In September 2007, the city commissioned an updated assessment of vulnerability. It found that the 1993 assessment was still relevant and that many changes must be made to protect the downtown area. Its low elevation and proximity to the Budd Inlet make it particularly vulnerable to SLR. Among other dangers, SLR could lead to drainage problems and structural damage, and much of the port area could be submerged at high tide.

Percival Landing is among the structures imperiled by SLR. The city has long been considering options for renovating the site, and a fund was created for this purpose after a 2004 inspection found that the facilities were deteriorating.

The way that that money may be spent is now heavily influenced by the threat of SLR. On January 15, a special council of Olympia officials met to discuss preparing Percival Landing for higher water levels. It concluded that adjustments should be made to allow for up to two feet of SLR.

Many more such alterations will be needed throughout Olympia.

Amber Carver is a junior enrolled in Tropical Rainforests.

CONFLICT, from cover

Hassinger drove the student to police services for booking. Students chased after her car, and she was met by at least 15 students at police services. The students remained in front of the building in a defiant manner.

Officer Tony Perez, who assisted Hassinger during the arrest, alerted the crowd he would call Olympia Police Department for back up.

The students began to leave and Perez didn't call for backup. As they left, students tagged both the Sem I building and one of the police cars.

The arrested student was released that night and was instructed to report to a grievance officer. "He apologized before he left the station," said Sorger.

This incident took place during the last

week of fall quarter, but students weren't informed by the administration about it. Members of the campus community still remain unaware of many of the details.

A community review board meeting, a board that holds forums for students, faculty, and staff who have grievance with police services, was held in regards to the event. Sorger, heard from a student who felt interest in the matter had waned.

"There's a couple of students that were interested in the beginning, but it's really died down," said Sorger.

The student affairs office regularly releases emails when incidents of interest happen on campus; however this time, they did not share any information with the campus community.

Jason Slotkin is a junior enrolled in an independent learning contract.

POLICE

THE EVERGREEN STATE COLLEGE

POLICE BLOTTER

01/24/2008

LOCK IT UP

After returning from what must have been an extensive session in the exercise room of the CRC, a man had returned to the locker room only to find that his wallet was missing. The real mystery, however, was how any thief could have penetrated the formidable defenses of the victim's backpack. He provided a contents list and was advised to cancel his debit card.

AND NOW, FOR SOMETHING COMPLETELY DIFFERENT...

Routine patrols are rarely routine and never patrols. On New Years Day, an officer approached a young man standing in the middle of the road, surrounded by smoke. After a request, the man surrendered a Black Cat brand firecracker. Moments later, another man shoved the pyrotechnician to the ground and yelled obscenities at him. This drew a Taser from the reporting officer, but the man on the ground quickly diffused the situation. He insisted that the officer put away his weapon because, "He was at fault and apologized." The victim hopped up and left the scene. The other man was referred to the grievance officer for inappropriate actions. You can't make this stuff up.

ONE STIFF TAB

On January 8, Officer Talmadge reported to the Greenery Office on the first floor of the CAB to find a suspect in Aramark custody. The officer was handed a bottle of Naked brand All-Natural Superfood 100% Smoothie, which was identified as the item involved in an attempted Market burglary.

Although the item cost a whopping \$3.99, the suspect was found to have more than \$100 in declining balance. After explaining that "his money goes so fast that he just took the drink," the suspect was referred to the grievance officer.

MALICIOUS MISCHIEF

Not much else happened in the month of January, unless you count the three reported incidents of graffiti. Taggers use inventive slogans and even more attractive colors: blue for the men's restroom and stairwell on the first floor of the CAB, pink on the signs facing Evergreen Parkway. Watch out, you hooligans: in each instance, a photograph was taken and logged in the Greener Graffiti notebook.

~ DAVID RAILEANU

Corrections

- Nicki Sabalu's name was incorrectly spelled on the cover of last week's issue.
- The Boistfort Valley Farm's name was incorrectly formatted on the cover of last week's issue.
- Natan Antolin was also spelled incorrectly. He was the author of the Healthwatch article on influenza.

Does something look amiss to you? If we've spelled something incorrectly, attributed something poorly, or grossly misrepresented the truth, let us know.

(360) 867-6213
cpj@evergreen.edu

Evergreen Parkway closures extended

Parts of the Evergreen Parkway will be closed this week, as maintenance crews repair damage done to street lights by recent copper wire thefts.

The closure will be in effect from 8 a.m. until 3:30 p.m starting January 23, according to an email sent out by Paul Smith of Facilities.

Students arriving at the campus from the freeway will have to take a detour during these hours.

Workers from the college will be removing damaged wire left by the thieves, and replacing it.

The wire damage on this part of the road was more significant than once thought. Because of it, sections of the road will be closed until the work is completed. Signs and barriers will be used to direct traffic towards detours.

~ JASON SLOTKIN

New York Style Hand Tossed Pizza

Huge Selection of Fresh Toppings!

Pizza By The Slice & Whole Pies
Vegan Pizzas Available

Salads, Calzone, Fresh Baked Goods
Micro Brews on Tap, Bottled Beers, Wine

Dine In or Call Ahead for Take Out

360-943-8044

Located at Harrison & Division (233 Division St. NW)



THE ROYAL

Lounge & Bocce Bar / 311 N. Capitol Way Olympia / 360 705 0760
www.theroyalolympia.com / Happy Hour 3-7p / 21+

DRINKS / MUSIC / BOCCÉ

TASK FORCE, from cover

way that people on the outside perceive as fair?"

"We want it to be transparent, we don't want it to be the big secret on the fourth floor of SEM I," said Seabert-Olsen.

Charles Loosen, a student that serves on the appeals hearing board for the grievance process and is a Geoduck Student Union representative, cites transparency as one of the most important issues in the grievance process, and that having higher student involvement can help achieve that.

"There needs to be some way of overseeing the grievance process," said Loosen.

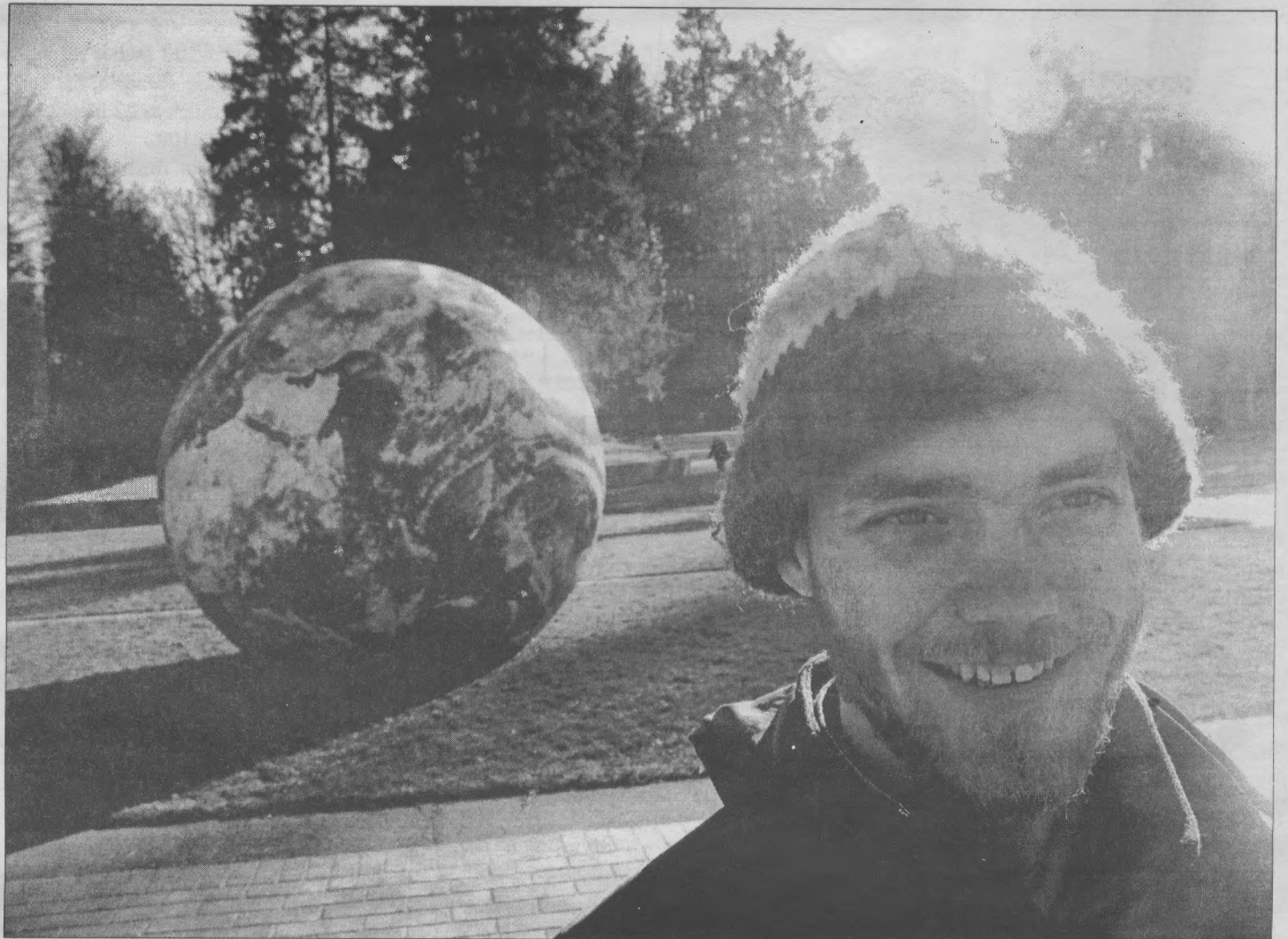
The revision of the conduct code will be taken up by a Disappearing Task Force (a type of committee that's known on campus as a DTF) will examine, discuss and revise the conduct code within the month.

DTFs are committees that usually consist of a mix of faculty, staff and students, are assigned certain problems or issues to address, and disband as soon as the task is accomplished.

The task, in this case, is revising the conduct code to better serve students, and the conduct code DTF will be looking to get as much input from students as possible. There are two student positions available.

If you are interested in joining the conduct code DTF, contact the Geoduck Student Union at (360) 867-6555 or geoduckunion@evergreen.edu, or Art Costantino, Vice President for Student Affairs, at (360) 867-6296 or costanta@evergreen.edu.

Seth Vincent is a junior enrolled in an independent learning contract. He is also the editor-in-chief of the Cooper Point Journal.



SETH VINCENT

"IT SEEMS LIKE [WE] COULD COME UP WITH A WAY TO HARNESS TIDAL POWER," SAYS SCHUYLER TIMMONS

CLIMATE, from cover

energy sources and efforts to improve sustainability and bring about environmental justice. The Declaration intentionally avoids calling for specific policy, because according to the CCN Google group's webpage, "We don't need to lay out specific policies in order to show policy makers what we want."

In fact, according to campus WashPIRG organizer Emily Saxton, there are already four pieces of legislation building momentum at the Washington state legislature.

"In particular, students should look into the green jobs and clean climate bill," she said. "There will be new caps on industrial carbon pollution and then money collected from fees charged to violators will go to municipalities for what they want to do."

According to Saxton, in Eastern and Central Washington that could mean more resources for wind and solar energy development. In Western Washington, funds could go toward green buildings and urban sustainability.

"Another hope is this will impact (funds for) green jobs in Washington," she said.

Perhaps the boldest aspect of the signature gathering is the pledge students are being asked to sign. CCN is asking students who sign on to their Declaration for several

"THE POINT OF CASCADE CLIMATE NETWORK IS WE ARE UNITING CAMPUSES TO SHOW HOW MANY STUDENTS FEEL THE SAME WAY ABOUT PROTECTING THE EARTH."

commitments, including striving to personally reduce our carbon footprint and vote for candidates in upcoming elections who promise to act regarding climate change.

Asked what immediate changes she would like to see at the college, organizer Elisa Otter said fellow students ought to be concerned about Bank of America's presence on campus.

"They are funders of Big Coal and mountaintop removal," she said. "What a powerful statement it could be to get Bank of America off our campus, so they know there is pressure on them to improve their habits, because people care."

Timmons added, "Yeah, in addition to finding alternatives to gas-powered leaf blowers and other polluting maintenance projects, getting students involved in developing alternative energy on campus would be great." Asked to explain, Timmons suggested, "Maybe through solar panels on rooftops or tides on the waterfront. It seems like Evergreen students and our teachers

could come up with a way to harness tidal power."

Timmons said that the Campus Sustainability Coalition is a source of hope, with people from a variety of other groups working together.

"We don't want to compete with or take away from the amazing work that is already being done here," he said. "The point of Cascade Climate Network is we are uniting campuses to show how many students feel the same way about protecting the Earth. That's a big part of what Focus the Nation is all about too."

Focus the Nation, a full day of events focused on building awareness and understanding of climate change issues in the northwest, takes place at Evergreen on Wednesday, January 30. Brochures and fliers are around campus.

Gavin Dahl is a senior enrolled in Music Technology and a contract called Community Radio Volunteer Coordination.

*anyone can
write news.*

*we mean
anyone.*

*we mean
you.*

story planning meetings,
thursday at 5:00

THE LAW OFFICES OF SHARON CHIRICHILLO, P.S.

Clockwise, Seated on right: Sharon Chirichillo, Patricia Talbott, Carolyn Reed, Mary Ranahan, Pat Weber



SHARON CHIRICHILLO IS A 1993 EVERGREEN GRADUATE.

- Evergreen Grievance Hearings
- Driving Under the Influence (DUI) Charges
- Reckless and Negligent Driving Offenses
- Minor in Possession (MIP) Violations
- Department of Licensing (DOL) Hearings
- Driving While License is Suspended (DWLS) Violations
- Drug Offenses
- Property Crimes
- Traffic Citations
- Other criminal matters.

Aggressive representation with compassionate counsel
Free initial consultation when you mention the CPJ
(360) 943-8999 • www.olympialawyers.com
STATE & SAWYER LAW BLDG,
2120 STATE AVENUE NE, OLYMPIA, WA 98506

WE ARE A FULL SERVICES LAW FIRM.
YOUR LEGAL ADVOCATES FOR THE RIGHT OUTCOME.

The Oval-Bound Trail: CAMPAIGN 2008 HEATS UP

Dear Reader:

Apparently you didn't see our note last week. We so very nicely asked you to let us know how you felt about the CPJ and our presidential campaign coverage. We made very clear our priorities, our intentions, and our desire to hear from you. But you were silent. We received not a single email, phone call, or in-person opinion. While we still encourage you to do whatever you need to do to get in touch with us, we're going to continue to report on the campaign trail. Our regular reporter has turned in three more briefs on the results this week. Hopefully they inspire you to vocalize some of those famous Greener opinions. Until then, dear reader, we remain, yours truly, the Cooper Point Journal editorial staff.

Dems in the Desert

Clinton walked away with a win from the Nevada caucuses Saturday, January 19. Senator Clinton took 51% of caucus goers support, beating her main rival, Senator Obama, who garnered 45% support.

The Obama campaign was quick to point out that the senator captured one more delegate from the state. The situation was due to how proportional strength of delegates was assigned to "at large" caucus precincts and has been the target of criticism.

The Clinton campaign framed this as an important indicator that her campaign is doing well, after two back-to-back wins. John Edwards received only 4% of support, his worst yet.

The Democratic race seems to be clearly shaping up between Obama and Clinton, with Clinton currently leading if you count pledged super delegates (which can change pledges) and Obama leading if you count only state delegates.

~JUSTIN SHEPHARD

Nevada goes Mormon

Romney won Nevada with 51% of caucus-goers' support in a clear victory over his closest competitors in the state: Ron Paul (14%) and John McCain (13%).

Romney remains clearly on top in the delegate race for the republican nomination, but McCain took a victory in the Republican South Carolina primaries and his campaign was quick to trumpet his Southern success. McCain had 33% of Carolinian voter support, compared to 30% for Mike Huckabee.

Fred Thompson, who counted on his Tennessean roots to give him a distinct advantage, placed third in the Palmetto State with 16% and subsequently dropped out of the race. While Romney is leading in total delegates for the Republicans, the overall race is still much more up in the air than the two-candidate competition the Democratic race is turning into.

~JUSTIN SHEPHARD

Southern States Ahead

January 26 will see the South Carolina democratic primaries as the first primary to feature a sizeable African-American vote. Both the Clinton and Obama campaigns have been targeting blacks aggressively and they may make up 50% of Democratic primary voters in the state.

January 29 is the next big day for Republicans, with Florida holding its Republican primary. Recent Rasmussen polling shows Romney with a slight lead over McCain and Giuliani in third.

Florida will be difficult for McCain in large part because independents are not permitted to vote on the Republican ballot. Giuliani will be waiting to see if his "Big State" strategy pays off. He has been focusing his campaigning on states with large numbers of delegates and letting small states slip by.

Washington's primary is fast approaching. Fellow Evergreen-staters will take to the polling places on Tuesday, February 19. The last day to register for general voters passed last Saturday, January 19.

But new voters, that is, those who have not registered to vote in the state of Washington before, may appear in the office of the County Auditor as late as February 4 to register in person.

An online guide to the candidates for the 2008 Washington Presidential Primary is located at <http://vote.wa.gov/votersguide.aspx>.

More voter registration information can be found at <http://govdocs.evergreen.edu/voting-info.html>.

~JUSTIN SHEPHARD

Need some fun off campus? We'll get you there!

Ride Intercity Transit local routes with your Evergreen Student ID! We travel to lots of **great destinations**, so you can **take a break** and grab a pizza, run some errands, or stock up on the latest CDs. For more information, just check our website or give us a call.

Route 41

Dorms, Library, Downtown Olympia
Travels to downtown Olympia via Division and Harrison, serving destinations such as:
Bayview Thriftway
Danger Room Comics
Falcone Schwinn
Grocery Outlet
Heritage Park
Hollywood Video
Mekong
Olympia Community Center
Olympia Art & Frame
Olympia Food Coop
Rainy Day Records
Traditions Fair Trade
and more!

Route 48

Library, Downtown Olympia
Travels to downtown Olympia via Cooper Point Road, serving destinations such as:
Bagel Brothers
Bayview Thriftway
Blockbuster Video
Danger Room Comics
Falcone Schwinn
Goodwill
Grocery Outlet
Heritage Park
Hollywood Video
Mekong
Olympia Community Center
Olympia Art & Frame
Rainy Day Records
Rite-Aid
Safeway
The Skateboard Park
Traditions Fair Trade
Westfield Mall
and more!

**INTERCITY
TRANSIT**

360-786-1881
intercitytransit.com

Join us.
Come join us.
The CPJ
currently has
open positions.
(Just so you know)

Do you harbor a secret desire
to correct other people's
grammar and spelling?

Become a
Copy Editor.

Do you want to help your
fellow student's voices be
heard?

Be our Student Voice
Coordinator.

Do you have opinions? Do
you write letters?

Letters and Opinions
is for you.

Do you write every single
thing that happens in
your life on a calendar?

Perfect! We need a
Calendar
Coordinator.

Give us a ring at
867-6213 or
email at
cpj@evergreen.edu

Visit CAB 316 or
evergreen.edu/cpj
to apply.

Karaoke!
at Jake's on 4th
Olympia's Premier Gay Nightclub

Monday and Wednesday Nights
until 2
Twenty-one and over
Free

311 4th Ave * 956 FAGS * Daily Happy Hour 4-8

Orca Books
Olympia's Largest Independent Bookstore

New Books
10% off with
Current College ID.

We Buy Books Everyday!
509 E 4th Ave 352-0123
Mon-Sat 10-9, Sun 11-6 orca@orcaibooks.com

Brianna Coglon, 21; A beautiful life

by DAVID RAILEANU

Brianna Coglon, Evergreen junior and graduate of Bainbridge High School '05, passed away the evening of Friday, December 14 in Thurston County. A former actress, sculptor, professional model and student of art, English, psychology, and photography, she is described as being deeply humorous, honest, and loyal. She was 21.

Originally from Seattle, Brianna attended Bainbridge High School, where she was involved in many local and community activities. Fiercely creative, she developed a natural talent in dance, acting, painting, clothing design, and sculpture. She was an active, employable member of society, taking jobs at a movie theater, a high fashion shoe store, and local Madoka Restaurant.

Recently she was enrolled in *Looking Backward: America in the Twentieth Century*, a program that examines many of the major themes Brianna had chosen to make a part of her academic career. According to an article printed in the *Kitsap Sun*, she had also made plans to study abroad.

Though it would not be the first time Brianna had been out of the country.

Between graduating high school and matriculating at college, Brianna worked as a professional model. She traveled to Greece, where she reportedly lived a life of fashion and photography. She would not ultimately choose to pursue a modeling career, but learned about herself and her passions while overseas.

COMMUNITY RESPONSE

Vice President of Student Affairs Art Constantino sent out an email the morning of Monday, December 17 notifying the campus of Brianna's passing. "Sometimes it can take as many as a couple of days," before Student Affairs learns of a student death when it occurs off campus, said Constantino. Student Affairs immediately contacted Brianna's parents and made an effort to get in touch with friends and acquaintances.

Soon after the initial email was sent, another letter went out inviting campus members to the memorial services, held at Cook Family Funeral Home of Bainbridge Island, in the evening of Thursday, December 20.

Memorial contributions were accepted on Brianna's behalf to Heifer Project Interna-



David Raileanu is a senior enrolled in Molecule to Organism.

Faculty consider smoking ban, Geoduck Union calls for student input

Talk of a campus-wide smoking ban has put on hold the construction of a more permanent smoking structure that was to be set up near the CRC.

Facilities is waiting to set up the structure until the talk of a ban is settled, according to Art Constantino, Vice President for Student Affairs.

Currently, ten designated smoking areas exist on the main campus in addition to the designated smoking areas in housing. Both the bookstore and the Corner Store sell cigarettes, tobacco, and smoking paraphernalia.

Rob Smurr, a faculty member, has been pushing for a faculty vote a ban on smoking and the sale of smoking products since November 2007.

"[The faculty] really wanted to push this through without consent of the 4500 people on campus," said Loosen. "And students really need to be on board with this."

Students interested in voicing their concerns about smoking issues, or any other issues that affect the Evergreen community, are encouraged to contact the Geoduck Student Union, www2.evergreen.edu/studentgovernment.

~ SETH VINCENT

GEODUCK STUDENT UNION

Update from GU representatives

by ALEX MAVRIKIS & CHARLES LOOSEN

Your student union has been working hard this year to address a long list of your concerns. We've been doing a lot of behind the scenes magic to establish a foundation for action and positive change. However, no matter how much work we do we still need you.

We met this past Saturday for an intensive planning session where we prepared for the quarters ahead. You probably don't want to hear about our involvement in college finance, gaining compliance with Board of Trustees Policy #9, or our revised elections time line, but if you do we're here to answer your questions.

What might interest you the most is that the GU has been juggling a number of projects and representing the student body in a contentious debate about the future of our campus' smoking policy.

GU TOWN HALL MEETING THURSDAY, FEB. 7, FROM 7 - 9 P.M. IN THE HCC.

We've solicited the help of housing residents to create a Rights and Responsibilities poster that will help address tensions that appear to have grown in recent months. The Union is committed to ensuring residential areas are a safe place where everyone's liberties are respected.

On Wednesday, a number of GU representatives met with college staff and community partners to explore expanding education and counseling for smoking cessation.

This is more than just passing out nicotine patches. We want to help students

tackle the roots of addiction. The Union is particularly interested in permanent smoking structures that would reduce exposure to the aroma and health problems associated with environmental tobacco smoke.

There is no reason smokers and nonsmokers cannot live and work in an environment that is comfortable for both of them. In the past few weeks a number of faculty members have been pushing for a comprehensive smoking ban at Evergreen.

They have drafted a resolution that appears to have strong support within

their circle.

Many of you have heard that attendance at our weekly meetings is low, but today we had several students express opposition to the proposed ban. They exchanged ideas with representatives about alternatives that promote health and respect, while preserving choice.

We can't do anything without direction from you. How do you feel about issues like the smoking ban and campus housing? Are you looking for opportunities to give back to our community? Come to our Town Hall on Thursday, February 7, from 7 - 9 p.m. in the HCC. As always you can give us a call at (360) 867-6555, drop us an email at geoduckunion@evergreen.edu or stop by our office on the top floor of the CAB.

Alex Mavrikis and Charles Loosen are Geoduck Union representatives enrolled in independent contracts.

Scholarships

for Lesbian, Gay, Bisexual, Transgender (LGBT) and Straight-Ally Students!

Pride Foundation and the Greater Seattle Business Association (GSBA) are pleased to announce the availability of over \$350,000 in scholarships!

Over 40 different scholarships are offered but there is only 1 application to complete!

Applications must be postmarked by January 25th, 2008
To download an application, please visit:

www.pridefoundation.org/scholarships or www.thegsba.org/scholarships

Questions? Please call 1-800-735-7287 or e-mail scholarships@pridefoundation.org



Grab a date and join us at
THE BEST SEAT IN TOWN!

Visit us Tuesday and get 1 ticket FREE when you purchase another to the same movie at the new Century Olympia 14 Theatre at Westfield Capital Shopping Center!

CENTURY* OLYMPIA

Located at Westfield Capital, 625 Black Lake Blvd. SW • Olympia, WA 98502
1-800-FANDANGO + Exp Code 993# • Visit www.cinemark.com for showtimes

Buy one ticket, get one FREE to the same movie at Century Olympia!

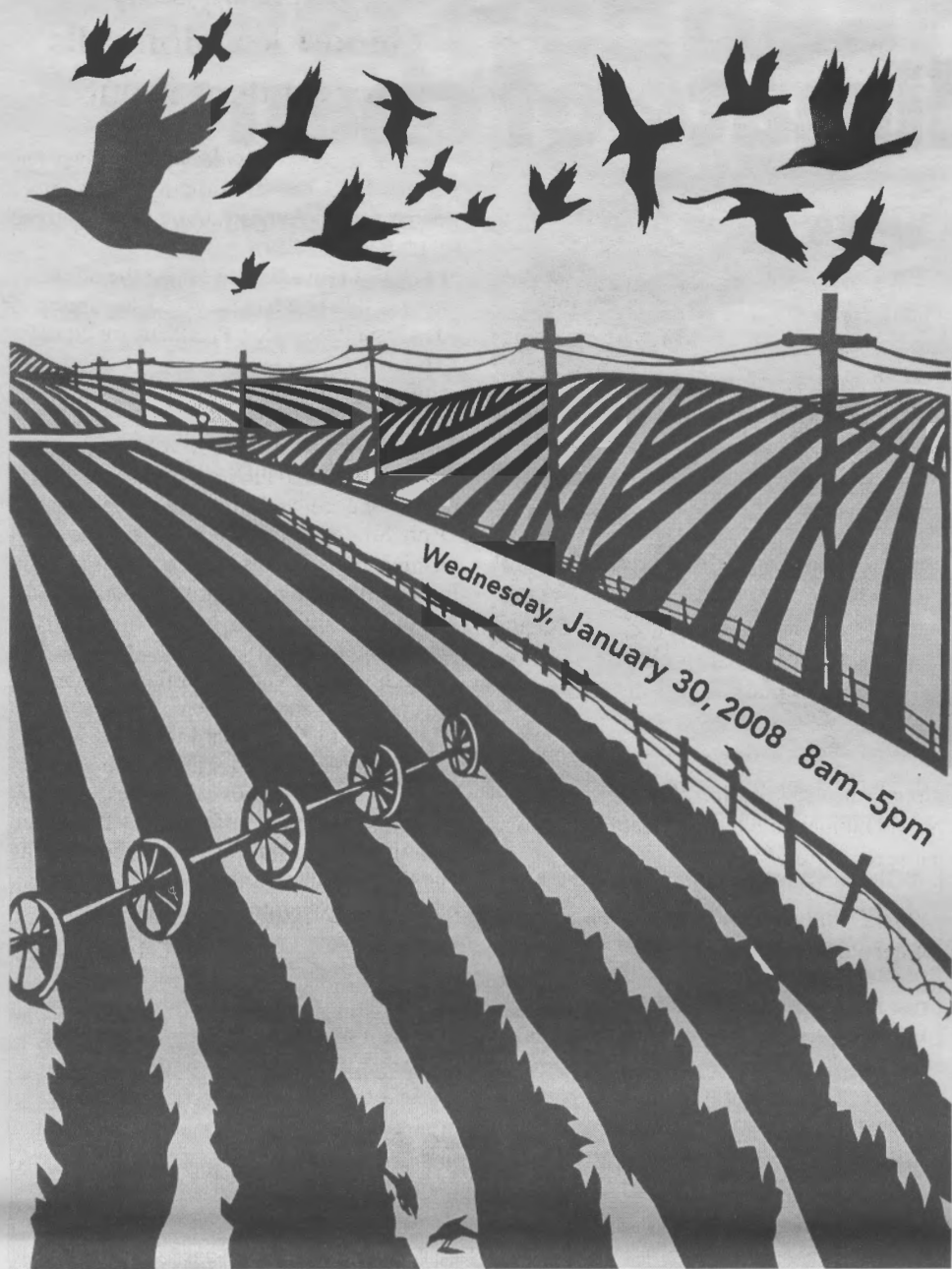
Valid only at CENTURY OLYMPIA
625 Black Lake Blvd. SW • Olympia, WA 98502

No cash value. No exchanges. Not valid with any other coupon or special offer. Not valid for duplication or resale. Must present coupon at box office to redeem. Valid Tuesdays only, free ticket must be used for the same date/showtime/film as purchased ticket. Must show valid Student ID. Offer expires 1-30-08.



Focus the Nation

A Community Forum on Climate Change in the Pacific Northwest at The Evergreen State College



"Focus the Nation provides an opportunity for Evergreen students to demonstrate their commitment to action on social justice and environmental sustainability."

"Climate change is one of the most important challenges facing our planet today. Climate change affects the poor and disenfranchised to a greater extent than the well-off few. It is a major challenge facing our planet in terms of maintaining a livable home for all species and for preserving intergenerational equity. We are engaged at Evergreen because our educational and public service missions call us to be engaged with these issues."

"I hope participation in the events will encourage the Evergreen community's momentum on responses to global warming throughout student's lives. In essence, what students will gain is another opportunity to engage intelligently and help determine responses to one of the most important issues of our time."

-President Thomas L. Purce

The Greenery will live up to its name during Focus the Nation. Executive chef Matt Corbett and his staff will prepare lunch featuring local food items. All raw ingredients come from farms and growers in Washington, with the majority from within a 150 mile radius of the Evergreen campus. Not all produce will come from within the radius due to the storm in December. There will be a variety of vegan items, along with locally grown chicken, and a made to order breakfast bar, plus soups, a salad bar and desserts. We were unable to find a few essential items within our Pacific Northwest region, so some salad dressings and other small items will be clearly labeled as "Non-Local." Participants will be able to read about the local farms that provided food for the lunch and ask questions during the "What are Greenhouse Gas Implications for our Food Choices?" workshop at 1:15, featuring Halli Winstead, the sustainability intern who sourced the food for this lunch, and Craig Ward, director of Dining Services. We look forward to sharing this dining experience with you!



Creating a Climate of Change

- 7:30-9am Free coffee and tea from Greener Commuting for alternative commuters (Red Square)
- 8-8:45am **CONFERENCE OPENS** Community and Student Group tables with information and resources in the College Recreation Center (CRC) from 8:00am to noon.
- 8:45am **WELCOME** from President Thomas L. Purce
- 9-10:15am **CLIMATE CHANGE SCIENCE AND COMMUNICATION** (in the CRC)
- "Climate Science and Energy Options," E.J. Zita, Evergreen faculty member
 - "Talking American: Why Values Are the Glue of Social Movements," David Domke, University of Washington Department of Communications
- 10:15-10:30 **BREAK**
- 10:30-12pm **CLIMATE CHANGE IN NORTHWEST** (in the CRC)
- Facilitator: Zoltan Grossman, Evergreen faculty member
- Terry Williams, Fish and Natural Resource Commissioner, Tulip Natural Resources; tribal implications of climate change
 - Paul Horton, co-founder and former Executive Director, Climate Solutions
 - Shelly Vendiola, Swinomish/Lummi/Filipina; Community Alliance for Peacemaking Project, Seattle
- 12-1:10pm **LUNCH BREAK** Join us in the campus Greenery for a locally sourced meal (\$7.21). Student Media Performances (Seminar II A1105) & Electric Car Display (Red Square)
- 1:15-2:45pm **WORKSHOPS** (in Seminar II) See descriptions of individual workshops at right. →
- 2:45-3pm **BREAK**
- 3-4:25pm **POLICY RESPONSES & COMMUNITY ORGANIZING WHAT WE CAN DO** (in the Longhouse)
- This session looks to the future to see possibilities for positive efforts that are not yet implemented. It will look not only at setting an agenda for our elected officials, but also gaining tools for community organizing and building grassroots alliances.
- Facilitator: Ted Whitesell, Director of Evergreen's Master of Environmental Studies Program
- Peter Dorman, Evergreen faculty member
 - Shelly Vendiola, Swinomish/Lummi/Filipina; Community Alliance for Peacemaking Project, Seattle
 - Beth Doglio, Climate Solutions Campaign Director
- Roundtable - Community groups presenting their direct responses to climate change:
- Monica Vaughan, Rising Tide Collective, regional coordinator for Global Exchange's Freedom from Oil Campaign
 - Pat Rasmussen, Terra-commons - on environmental despair turned towards activism
- 4:30-5pm **GET INVOLVED** (in the Longhouse)
- This session will emphasize the importance of individual and community based action.
- Facilitator: Karin Van Vlack, Northwest Earth Institute
- Emily Saxton, Campus Climate Challenge Group
 - Claire Lagerwey and Elisa Otter, Cascade Climate Network
 - Kyle Lucas, Sierra Club - Sasquatch Chapter

LOCAL COMMUNITY RESPONSES & SOLUTIONS WORKSHOPS (1:15-2:45pm)

"What is already happening"; success stories and collaborative efforts. These workshops meet in the first floor lecture rooms in Sem II.

COMMUNITY SOLUTIONS TO CLIMATE CHANGE: Land Use and Transportation (Sem II A1105)

Facilitator: Martha Henderson, Evergreen faculty member

- Thera Black, Senior Planner, Thurston Regional Planning Commission
- Joyce Phillips, Senior Planner, Department of Community Trade & Economic Development, Growth Management Services
- Larry Leveen, Owner, Olympia Bikes

SUSTAINABLE BUILDINGS IN THURSTON COUNTY: Progress to Date and Next Steps (Sem II B1105)

Facilitator: Rob Knapp, Evergreen faculty member

- Paul Huff, Apple Homes: Residences
- Mark Beardaemphl, KMB Design Groups: Commercial and Institutional Buildings
- Gretchen Van Dusen: Residential Design and Community Networks

WHAT ARE THE GREENHOUSE GAS IMPLICATIONS FOR OUR FOOD CHOICES? (Sem II C1105)

Facilitator: Martha Rosemeyer, Evergreen faculty member

- Andrew McCleod, Foodshed-Food Hub project/local food system
- Barry Cannon, EverGreeners - Ending Hunger in Thurston County
- Craig Ward and Halli Winstead, Evergreen food services

MOVING EVERGREEN TO CARBON NEUTRALITY (Sem II D1105)

Facilitator: Kathleen Haskett, The Evergreen State College purchasing and contracts manager

- Kathleen Haskett - Progress of the paper/print management committee at Evergreen
- Rob Cole and Dylan Fischer, Evergreen faculty members - Research findings, local forest impacts, carbon sequestration of Evergreen's forest
- Victor Sanders, student - Greener Commuting Program; Late Night Shuttle project
- Andy Deffobis, student - The Evergreen State College Clean Energy Committee
- Elisa Otter, student - Campus Sustainability Coalition

STATE GOVERNMENT: Shifting the Markets for Climate Change and Health (Sem II E1105)

- Karin Kraft, Department of Ecology, Interagency Sustainability Coordinator. How state purchasing can shift the markets for energy and products with low greenhouse gas emissions while promoting local businesses and supporting the state's economy.
- Liz Kunz, Department of Ecology, Environmentally Preferable Purchasing Specialist. Summary of the state's progress towards sustainability based on current indicators.
- Hedia Adelman, Department of Ecology - Executive Policy Advisor. How the new carbon footprint tool will be used to reduce the state's greenhouse gas emissions.



About the artist:

Nikki McClure of Olympia, Washington is known for her painstakingly intricate and beautiful paper cuts. Armed with an X-acto knife, she cuts out her images from a single sheet of paper and creates a bold language that translates the complex poetry of motherhood, nature, and activism into a simple and endearing picture.

JOIN US FOR THE EVENING COMMUNITY FORUM AT THE WASHINGTON CENTER FOR THE PERFORMING ARTS. ADMISSION IS FREE — DOORS OPEN AT 6PM.

Focus the Nation: Creating a local climate of change

by KATHLEEN SAUL

THINK GLOBALLY. ACT LOCALLY.

We usually think of climate change in terms of the highly visible impacts it appears to be having on our world: The melting glaciers in Greenland, the category five hurricanes that slam the coasts of Central America and the U.S., the cracked earth in drought ridden Africa, and the rising sea levels that threaten to engulf Pacific Island nations.

Even if the results are not so dramatic here, climate change will affect all of us. And all of us can and should take actions that will have an impact at the local and perhaps even the global level. But what can we do? Find out by joining us for *Focus the Nation: Creating a Climate of Change* on campus on Wednesday, January 30!

Beginning at 8:00 a.m., and throughout the morning, we will have the chance to interact with local organizations that are working to lessen mankind's negative impact on the environment.

Formal activities will kick off at 8:45 a.m. in the CRC with an official welcome from Evergreen President Les Purce. A panel discussion *Climate Change in the North-*

west will follow, helping us understand just how Climate Change is being felt in our part of the world.

After lunch there will be a variety of exciting workshops highlighting local community responses to Climate Change: *Sustainable Building in Thurston County, the Greenhouse Gas Implications of our Food Choices, Moving Evergreen to Carbon Neutrality, Land Use and Transportation, and the Shifting Markets for Climate Change and Health.*

We'll then learn about community organizing and setting an agenda for our elected officials. The on-campus event will conclude with *Get Involved*, a session emphasizing the importance of individual and community-based action.

A culminating evening community forum will be at the Washington Center for the Performing Arts on January 30. Doors open at 6:00 p.m. This will be a time for us to communicate with our community leaders and hear their commitments to climate change action. For more information please visit <http://focusthenation.evergreen.edu>.

So mark your calendar! Act locally! Join Focus the Nation on January 30!

Kathleen Saul is a graduate student enrolled in the Master of Environmental Science program.

Words of wisdom from our workshop facilitators and students:

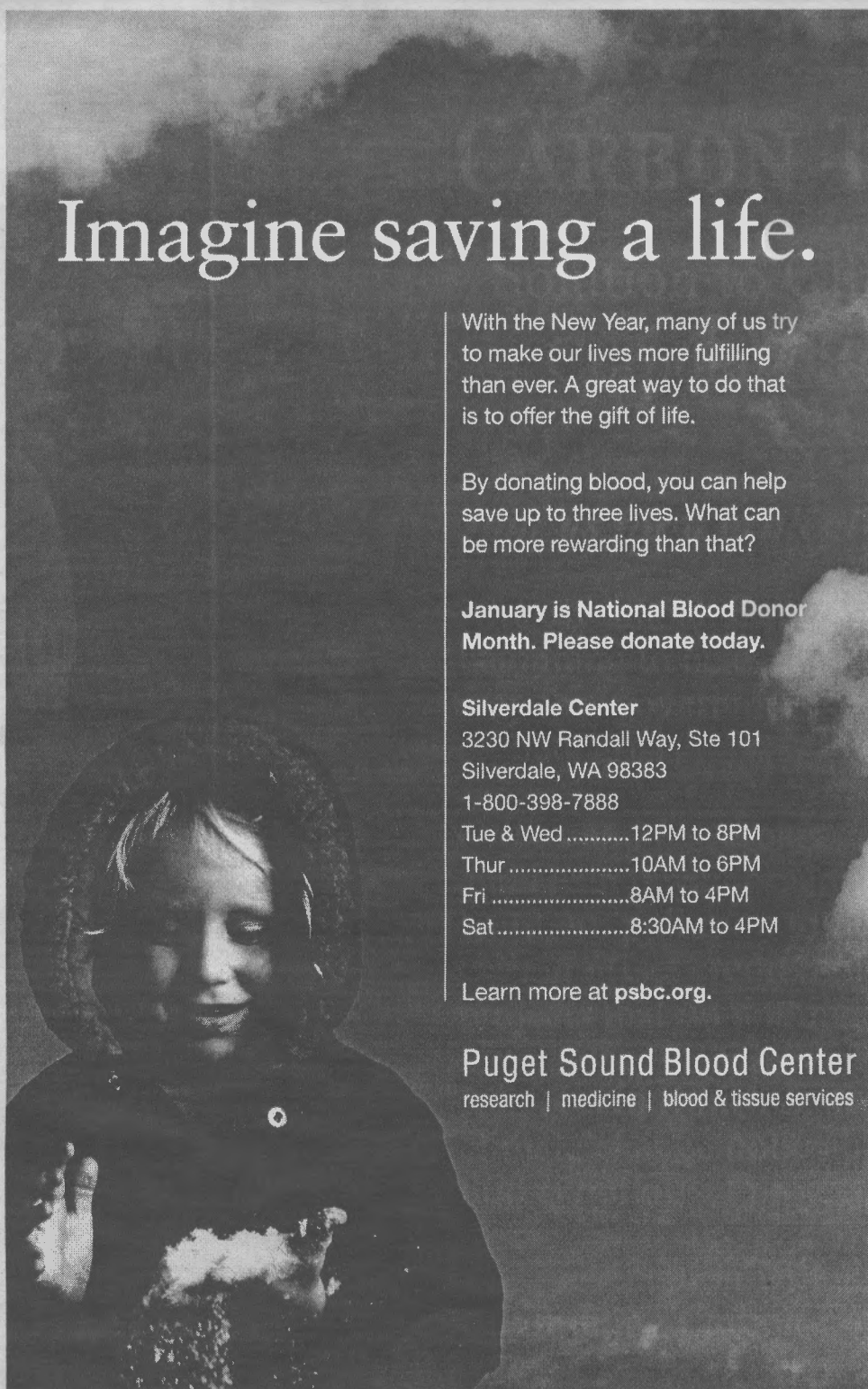
"We are made to feel powerless and fatalistic in the face of the biggest threat to the Earth's well-being in history. We are told that we can only respond to climate change in a personal way – by changing our light bulbs or buying an expensive car – and that we cannot change the industrial policies that generate most greenhouse gasses. Yet the most effective responses to climate change are being seen at the local level, not so much at the national or global level. Students getting involved in climate justice activism can make a real difference, by shifting the debate away from corporate, technical quick-fix solutions, and toward deeper community-based solutions."
~ Zolton Grossman

"Global Climate change is not the kind of environmental problem that can be solved with one wise piece of legislation or one group's volunteer efforts. We all need to understand what we can do to help conserve scarce resources and make wise choices for today and for the future. Focus the Nation will be a great starting point for learning what each of us can do to help turn the tide of Global Climate change."
~ Natalie Kopytko

"I hope everyone learns one thing they can do to participate in a collective effort to minimize their use of resources. I hope we all find something to inspire our sense of relationship with Earth processes and learn to make positive choices regarding energy, climate change and society."
~ Martha Henderson

"I am hoping to educate students, staff and faculty on the simple steps that they can take to reduce paper consumption; reduce printing; and move towards using 100% post-consumer recycled content paper."
~ Kathleen M. Haskett

"A youth movement is beginning and I hope after January 30, the entire Evergreen campus will be helping to lead that movement. Whether you're an artist, a writer, a scientist, a generalist we all have something to contribute to this collective effort to help stop this global crisis. It is up to us now to come together in unity to change our behaviors and the behaviors of others in order to have a greater impact on our community and the greater surroundings."
~ Chelsie Papiez



Imagine saving a life.

With the New Year, many of us try to make our lives more fulfilling than ever. A great way to do that is to offer the gift of life.

By donating blood, you can help save up to three lives. What can be more rewarding than that?

January is National Blood Donor Month. Please donate today.

Silverdale Center
3230 NW Randall Way, Ste 101
Silverdale, WA 98383
1-800-398-7888
Tue & Wed12PM to 8PM
Thur10AM to 6PM
Fri8AM to 4PM
Sat8:30AM to 4PM

Learn more at psbc.org.

Puget Sound Blood Center
research | medicine | blood & tissue services



Lunar Spring Festival

2008

Year of the Rat

<p><u>January 26, 2pm</u> Lunar New Year Concert</p> <p>SPSCC, Kenneth J. Minnaert Center for the Arts Tickets \$25-\$10 Group discounts available Information (360) 596-5501, or (360) 867-6833</p>	<p><u>February 2nd, 4pm</u> Poetry for the Common Good</p> <p>A workshop with the acclaimed translator of Chinese poetry Red Pine TESC, SEM II, E 1105 Free Admission Information (360) 867-6736</p>	<p><u>February 8, 9, and 10th</u> Embrace Tiger Return to Mountain</p> <p>Tai Ji workshop with Chungliang Al Huang TESC Longhouse \$306 for a credit, \$100 no credit Register with TESC Extended Education (360) 867-5515</p>
---	---	--

ARTS COMMISSION

Meet Redbear.

by BRANDON CUSTY

Patrick LaBahn is Redbear. Patrick LaBahn is also a first-year student at Evergreen. Last May Redbear. came to the Evergreen Soup, along with other bands he was touring with. The common room of the first floor dorm was packed, overflowing into the halls and out of the windows. He fed off the energy of the crowd, which was excited when they heard his plans to attend Evergreen. In the fall, Patrick LaBahn came to Evergreen. He has been playing house shows and local cafés like the Artisan's in Olympia.

Patrick LaBahn started playing guitar when he was five years old. "I always wanted to just do music," he explained. When he was a kid he used to draw album covers for made up bands that he wanted to be in, usually metal bands. He played in rock bands in high school. Patrick LaBahn started to play Redbear. about two years ago. He started out with Patrick. but soon realized that he needed a more Google friendly name. The red came from Star Wars fascinations of youth and the bear was a slight reference to his hair and beard. They are both red. He told me that in Native American Lore, Redbear was a being that arose as bears were colored red by the setting sun. The Redbear was there to steal their souls. A slightly demonic story behind a name and character that is more fuzzy than fearsome.

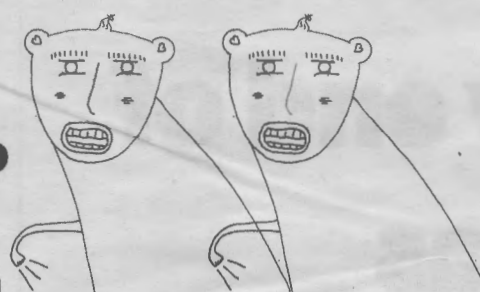
I had a chance to talk to Patrick about



PHOTO COURTESY OF REDBEAR

THE FAMOUS, NAY, INFAMOUS, REDBEAR.

Redbear. He says the music has changed a lot since that first little concert at Evergreen. "I thought my old songs were to cute," he said. LaBahn cites the other bands he tours with and his good friends for the inspiration to change his style. The transformed Redbear. provides more even distribution of the guitar and his vocals. He also adds percussion of the guitar while playing. The lyrics have changed. "The new lyrics have more flow and use more word play," he said adding, "I'm expressing more of my



I'M EXPRESSING
MORE OF MY MUSIC
NOW, INSTEAD OF
JUST PLAYING SONGS

music now, instead of just playing songs." He tells a more relatable story with the new music, telling small parts of a story that can be pieced together in different ways, evoking different images and ideas for the audience.

Redbear. feeds off the crowd. LaBahn said "I can't play my set if the audience is stagnant." He uses the energy that the crowd gives back to him. It's like recycling and it smells better than compost. Redbear. will be at the Cedar House on the 29th, this Tuesday night. He is playing with John Crocker, World History, and Likeclaws.

He will be putting out a 7-inch record with Superfamicom, Tinyfolk, and Imadethismistake. It will be coming out this March. Also coming out this March is his new CD "Hollywood Taoism."

www.myspace/redbearperiod

And if you can't find him on myspace, in the words of Redbear. "You can find me in Iceland in twenty years."

Brandon Custy is a sophomore enrolled in Performing Arts Laboratory.

KXOS 89.3

Weekly Top 15

1. Orbitron - *B-Boy Universal*
2. Various Artists - *Juno Soundtrack*
3. Egyption Nursery - *New Anthem*
4. Da Cruz - *Nova Estacao EP 1 & 2*
5. Various Artists - *The Inspiring Sounds of Rio de Janeiro*
6. Grupo C halas - *Memorias De Una Pirca*
7. Francisco Pancho Navarro - *Sweet Guitar*
8. Juan Carlos Romero - *Azulejo*
9. Ray Bonneville - *Goin' By Feel*
10. Various Artists - *Rough Guide to Paris*
11. Omid - *Afterwards 3*
12. The Evaporators - *Gassy Jack and Other Tales*
13. Ladysmith Black Mambazo - *Ilembe: Honoring Shaka Zulu*
14. I Broke My Robot - *Tomorrow Does Not Exist*
15. The Terrordactyls - *s/t*

~ Compiled by Nicki Sabalu

CARBON TRADING:

Solution to Climate Change
or Corporate Resource Grab?

Join us for a critical conversation...

Already a huge force in Europe, carbon trading is beginning to be established in the US as the primary way that governments and corporations address the climate crisis.

Critics and researchers are discovering that carbon trading and clean development projects involve externalizing Northern pollution to Southern communities, and most of the carbon offset credits sold to industrialized countries come from projects that do nothing to reduce fossil fuel use.

Join **Kevin Smith & Tamara Gilbertson**—leading critics of international climate change policy and researchers with www.carbontradewatch.org—for a conversation about offset projects, international policy, and power.

The presentation will also feature a unique photo exhibition, 'The Offsets Market in India, Confronting Carbon Colonialism.'

Jan 31st 3pm
Lecture hall 4
Evergreen State
College

For more info: chriset@evergreen.edu

A happy end of Christmas

by CASEY JAYWORK

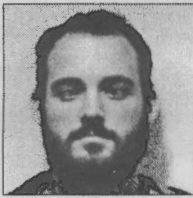
Hung over in Philly International, I call my friend Mary and wish her a happy End of Christmas.

"Another holiday cavalcade of madness survived," I say, "and there's a full twelve months until the next feeding frenzy of Useless Shit and Hallmark Cards."

"And Tickle-Me-Elmos," she groans. "God, those things are creepy. It's like the Catholic Church ordered a training module for its molesters, and somehow the producers of *Sesame Street* got their hands on it."

A new voice comes on—it's her husband Greg, on another house phone. "Really? Because, you're the one who just bought a Tickle-Me Elmo and an automated Read-Along King James Bible. I guess we've consigned him to a fate of hands-on preaching, if you know what I mean." Greg is weird.

"Look, money changing lots of hands isn't, in and of itself, good for the economy," I interrupt. "The whole point of having a free market instead of a controlled economy is the assumption that individual-powered trading—what you might call 'grassroots economics'—is more efficient at getting



that's the hope—and what could more befit the Yuletide season than hope?"

Greg attacks. "Christmas is about Christ, not material possessions. The purpose of spending \$29.99 on a cackling, red-furred vibrator is not the fiendish doll itself, or even the newly sexually gratified child receiving it. It's the act of sacrifice—of giving up four hours minimum wage pay—for a purely symbolic action. This glorifies the Risen Son and demonstrates your dedication to a Kingdom, which is not of this world. I mean if the people actually liked their Christmas gifts, it would be about them and not God, wouldn't it?"

"And this perverse idea you have about making gifts *useful*? That's just downright humanism, you heretic. If people weren't needy, where would God fit?"

"Look!" I cry, finally getting a word in edgewise. "The point I was trying to make was that Christmas gift giving is a White Elephant—a destructively inefficient misuse of our wealth and resources. Think of it this way: a textbook invests in a future return, because the person who uses it doesn't just transfer their own wealth to the publisher for the book itself; they're also investing in their own productive ability—their own 'human capital'—in the future, based on what they learn from the textbook. The more human capital someone has, the more goods or

on *Tickle-Me Elmo*:

IT'S LIKE THE CATHOLIC CHURCH ORDERED A TRAINING MODULE FOR ITS MOLESTERS, AND SOMEHOW THE PRODUCERS OF *SESAME STREET* GOT THEIR HANDS ON IT.

people what they want (using limited resources) than the well-intentioned directives of some Citizen's Council of Economy. So as long as individuals pursue rational self-interest, a thriving economy is a good thing, because every trade benefits both parties. But luxury products—like fine wine, expensive toys, or a multi-trillion-dollar war on an idea—create a special drag on the economy in the long run, because they don't produce anything.

"More efficient, Casey?" Greg begins, in the tone of a priest who hasn't been getting any. "There's more to life than *efficiency*. What about love? Friendship? Beauty?"

"Greg, you're missing the point. Of course not everything of value is material—though try being happy without clothes or water. But what I'm saying is that those intangibles which we value so highly, like love and friendship and joy and truth, simply aren't within the purvey of economics. Criticizing laissez faire capitalism for ignoring love and beauty is like saying aeronautics hasn't paid enough attention to Platonist aesthetics."

Mary dives in. "Foreign investors have us in their pockets, Casey. If we don't, through consumption, shuffle wealth from one inefficient producer to another as fast as we can, they'll cash in those foreign bonds on us, and then where will we be?"

"It's like when you owe Visa fifty grand, you use your Mastercard to pay it—and then use your pristine Visa credit to pay the Mastercard bill, and so on. As long as we keep shuffling money around fast enough, the debt will never catch up with us. At least,

services—like making more textbooks at less cost, or giving better erotic massages—they can produce. This makes *everyone* richer, because this producer has more to bring to the trading table, and there's more stuff that other people want available in the market.

"By definition, luxury items don't do this. A Tickle-Me Elmo, a bottle of vodka, an Al Franken book—these things all make people happier, but in a strictly immediate way. By purchasing them, we give up more wealth (and therefore more luxury) in the long run in exchange for instant gratification.

"I don't know about you, but I'm tired of sacrificing a significant portion of my income to buy things for relatives which I *know* they won't like, because I'm not them and I don't know what they want as well as they do. I'm sure they're just as tired of being in the same situation. We're all caught in this awful social trap where everyone has to spend hard-earned money they may not be able to afford, but no one really benefits from it because the only person you're not allowed to spend it on is the only person you're *qualified* to spend it on: yourself. Why can't we just declare this stupid custom of gift-giving as obsolete, and change from 'Christmas' to 'Have Dinner With Your Extended Family-Day'?"

"Blasphemer!" shouts Greg.

"Fascist!" cries Mary.

Some woman in an elf hat announces my flight has begun boarding. I hang up.

Casey Jaywork is a sophomore enrolled in The Evergreen State College.

What can you do about Climate Change?

IF YOU HAVE BEEN WORKING YOUR ASS OFF TO CREATE CHANGE IN THE WORLD, OR IF YOU LOOK HOPELESSLY AROUND AND DON'T KNOW WHAT TO DO, THEN THIS IS A PLACE TO GET PLUGGED IN TO NATION-WIDE EFFORTS. IN THE PACIFIC NORTHWEST, A GROWING GROUP OF STUDENTS HAS FORMED THE CASCADE CLIMATE NETWORK

by ELISA OTTER

Many people see climate change as an isolated, environmental issue with technological solutions. The truth is, climate change is the physical expression of global oppression, war, over-consumption, and the raping of natural resources.

It is the result of humans viewing ourselves as something separate from nature and not recognizing that we are



AS YOUTH AROUND THE WORLD, WE WILL FEEL THE GREATEST CONSEQUENCES DUE TO CLIMATE CHANGE. WE ARE ALSO THE ONES TO LEAD THE WAY TOWARDS A SUSTAINABLE FUTURE

completely dependent and indivisible from the natural world. After centuries of this disconnect and the growing imbalance of wealth among people, our world is reacting in ways never seen before. Ever. We are at a turning point in human history!

This climate crisis is a pending threat to life, as we know it. However, it also creates the greatest opportunity for change the human world has ever seen. We stand at a point in time when the possibility to lift people out of poverty, of peace in the world and within ourselves exists. In fact, it is the only way we will overcome this crisis.

The 'technology' that can transform this crisis into a sustainable, just, and prosperous world for all, lies within each of us. It is people power.

Now is the time when each individual must find the power and passion within us and take action. But one can't do it alone. We must join together as communities of all scales and commit to taking action in our own lives and in the functioning our nation.

As youth around the world, we will feel the greatest consequences due to climate

change. We are also the ones to lead the way towards a sustainable future, one that recognizes and values each individual as a part of the greater whole. This is our time.

For the last couple years, the Youth Climate Justice movement has swept through this country and across the world. Students are organizing on their campuses and in communities to turn this country around. We can no longer wait for the Government to make this transformation for us.

Events, like Step It Up, Northwest Climate Convergence, and Power Shift in D.C. have brought thousands of people together who want to take action. Focus the Nation on January 30 will be the largest teach-in on climate change in the nation and will bring citizens' concerns more to the mainstream.

Weather you self-identify with the climate movement or not, if you are working in any way towards a sustainable and just world, you are a part of this movement.

If you have been working your ass off to create change in the world, or if you look hopelessly around and don't know what to do, than this is a place to get plugged in to nationwide efforts. In the Pacific Northwest, a growing group of students has formed the Cascade Climate Network (www.cascadeclimate.org) which is putting on Cascade Power Shift: Mobilizing Youth for Climate Justice.

On February 8th-10th hundreds of students plan to meet in Eugene for a weekend of workshops, panels and open space to learn and share ideas about how we are going to spearhead this change and the ACTIONS it takes to get there. February 11, back up from Eugene, will be Youth Lobby Day in Olympia, where we can work the policy angle of this movement. Register for this event at cascadeclimate.org. We are getting carpooling and some vans together to get everyone down there.

This weekend is the place to be. Come. Get inspired. Get connected. Get active.

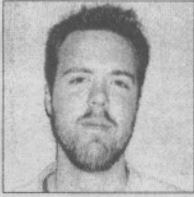
Elisa Otter is a student at The Evergreen State College.

GET INSPIRED.
GET CONNECTED.
GET ACTIVE.

Sub Standard: The Lending Crisis in America

by TILLMAN CLARK

The following is the first in a two-part series on the roots, causes, and effects of the subprime lending crisis in the United States.



Recently, if you follow any sort of news source, the subject of the economy and its recession is one that is heard often. A common buzzword that is heard alongside this topic is that of the "subprime" mortgage crisis.

But what exactly is the subprime mortgage crisis? What does subprime mean and why is it so important to the economy and this looming recession that everyone is talking about? Why aren't the overwhelmingly disastrous effects that it is having on people of color, lower, middle, and working class, and American citizens on the front page everyday? Because of the mainstream media's failure to accurately describe the underpinnings of the subprime mortgage crisis, and what it means for the economy and the people of this country. It is important to shed some light on the subject.

To start, subprime lending is a financial term for high-interest loans to people who would otherwise be considered too risky for a conventional loan. These borrowers, who do not qualify for the best market interest rates because of poor credit history, include middle-class families who have accumulated too much debt and low-income working families who want to buy a home. To try and ensure a covering of the

risk, lenders charge such borrowers higher than normal interest rates or they make "adjustable rate" loans, which offer low initial interest rates that jump sharply after a few years in the form of resets.

The reason that the subprime crisis has been able to develop into a near-nationwide catastrophe lies primarily in an arrangement made between mortgage lenders and Wall Street. The arrangement was considered mutually beneficial for several reasons. The mortgage lenders would start by giving a loan to a family with a decent income but not a lot of wealth. They would

**7.2 MILLION HOUSEHOLDS CURRENTLY HAVE
SUBPRIME MORTGAGES, AND MORE THAN
14 PERCENT OF THOSE ARE IN DEFAULT.**

then guide them into a high priced loan for a property they could not afford.

In the past, mortgage lenders would not sign on to something like this because they would be concerned about getting their money back. But the deal they worked out with Wall Street is that Wall Street could buy this debt, and sell it again and again and again so a group of different people on different layers were making money off bad loans. Eventually, mortgage lenders didn't care if they were actually going to get the money back from the people they lent it to because they knew they were making their money by selling it to Wall Street, so both parties were happy.

Which is where the current crisis emerges. Even though a lot of wealthy people have

made even more money off this process, major financial institutions are suffering consequences across the country because this debt had to be paid off sometime and somewhere.

Merrill Lynch, the world's biggest broker, has posted a record loss after writing down \$19 billion on assets dealing with subprime mortgages. Citigroup, another huge lending institution, posted an \$18.1 billion write down on subprime related assets, and also eliminated 4,200 jobs in what is expected to be the beginning of a series of layoffs stretching through this year.

But even worse is that the middle and lower classes involved with this are having their credit ruined, their homes foreclosed, and are watching already weakened financial communities slide into much worse conditions. According to the Center for Responsible Lending, 7.2 million households currently have subprime mortgages, and more than 14 percent of those are in default. It projects that one of every five of those loans issued in 2005 and 2006 will end in foreclosure, with 2.2 million families losing their homes.

The current crisis' convincingly negative effect on people of color is obvious. Lenders like to claim that there is no deliberate racial discrimination involved in subprime loans and that there is just a large amount of

people who had bad credit in communities of color that make the mistake of taking out loans that they cannot afford. But subprime lending industries have a propensity to target the weak and financially insecure in our society to take advantage of their desire for affluence and/or security, among other reasons.

It just so happens that the people they target are disproportionately people of color. In a report, issued by United for a Fair Economy, entitled *Foreclosed: The State of the Dream 2008*, it is stated that, according to federal data, people of color are more than three times more likely to have subprime loans. High cost loans account for 55% of loans to African-Americans but only 17% of loans to Whites. African-Americans and Latino Americans, in particular, trying to become homeowners (which is the number one source of wealth for most Americans), were duped by private companies putting them into loans that they could not afford.

According to the *Foreclosed* report, the subprime mortgage crisis will cause people of color to lose up to \$213 billion, leading to the greatest loss of wealth for African-Americans in modern U.S. history. So whether or not the lenders admit that they are deliberately targeting people of color, it is impossible to ignore the institutionalized racial inequality perpetuated by the practices of subprime lending industries unless you turn a blind eye to the statistics – which many industries are most likely doing in the name of profits.

Tillman Clark is a student at The Evergreen State College.

Letter to the Editor:

Day of absence Day of presence

Get involved in these days of importance

by ART COSTANTINO

Day of Absence (DOA) off Campus and Day of Absence (DOA) on Campus are scheduled for February 8 and Day of Presence (DOP)



is scheduled for February 13 (See www.evergreen.edu/multicultural). The activities planned during these two days provide all of us with opportunities to do the reflection and planning necessary to combat

never intentionally engage in a bigoted act, unless we work actively to confront the problem. Not only is active engagement with the issue necessary, but it must occur on a regular basis. Challenging racism is like riding a bicycle, bad things happen when we stop peddling. That is because without regular examination of the issues and commitment to change, we are likely to be drawn back into long established patterns of thought and action.

There are other opportunities to do such work, but DOA/DOP is special. DOA/DOP

**CHALLENGING RACISM IS LIKE RIDING
A BICYCLE, BAD THINGS HAPPEN
WHEN WE STOP PEDDLING.**

racism. Day of Absence off Campus has been designed for People of Color, Day of Absence on Campus has been organized primarily by Whites for Whites, and Day of Presence offers events where Whites and People of Color can work together.

Racism is built into the social structure of our society and has been part of our history for centuries. It is often subtle and often built upon unintentional actions. Given the nature of racism it can be perpetuated by all of us, even decent people who would

has been planned by fellow students, faculty and staff; it is an award winning program and the schedule is such that most everyone should be able to attend at least one event. Most importantly, DOA/DOP offers us the opportunity to keep peddling that bicycle in the company of other members of our campus community.

Art Costantino is the Vice President for Student Affairs at The Evergreen State College.

Past.

Present.

Future.

Be a part of it all.
Join the CPJ.

Come into CAB 316
to find out more.

cpj@evergreen.edu 360.867.6213

evergreen.edu/cpj

ON TRACK FOR SUCCESS:

An interview with Coach Dickson

by ZACH LIGHT

Welcome. So Coach, you are going to be the first person interviewed for the new sports segment, "Behind Evergreen Sports with Zach." How does that make you feel?

(Laughing) "I'm highly honored to be the first."

Okay, so Coach Dickson, what sport are you associated with, for all of those who may not know?

"I am the head men and women's cross country coach, as well as the men and women's track and field head coach."

How long have you been coaching?

"This is my eleventh year, sixth as a head coach."

Do you have any thoughts or feelings on the upcoming season?

"I think we have a good chance on improving on our conference performance from last year, which was the first that both the men and women had a scoring performance when previously only the men's had scored, and it was through good competition and not enough people in events so, as we grow we were able to put people in events who were able to score."

"It's not necessarily our goal to place, because we don't have a big enough team to place in a top two or three in our conference, but we have individuals who are very strong in different events, so the big goal with the program is to get a more well rounded team with different events, and were already getting good results, we're already getting some school records this early in the season and we should be getting even better as we go along."

When Coach Dickson is not coaching track or cross-country, he is...

"Being a sports information director."

What is your favorite aspect about being a coach?

"Definitely, it's just seeing people improve. When you see people get into their event, making themselves improve, and when that happens, that's always satisfying. More satisfying than their results or a win, or their place



STARS OF TRACK AND FIELD Craig Dickson, coach for 11 years, surveys his squad.

in relation to their competition.

Everyone has their own standard of competition, where they're going to finish in an event, and while someone may finish in last place, they actually got their season's best, and that's always exciting as a coach to see that happen."

If you could give any advice to any Evergreen athlete, what would it be?

"I think to narrow your focus to academics, and your athletics. If someone wants to be successful at athletics and as a student, simplifying their life more, well, we have a lot of things going on at Evergreen which is great, but also the community has a lot of things going on which is great, but it also provides a lot of distractions, which forces people to really balance their life to have success, which doesn't mean it's focus for the whole year, but it's a good three months time where people need to be pretty diligent with getting their sleep, getting their training in, and with social things, you get those in while you can."

If you can play any sport right now, what sport would it be?

"I do run, and compete sometimes already, but I certainly like lot's of outdoor activities, I like to hike, and rock climb, and I like riding

bikes, being on the water, swimming, boating, things like that."

What is your favorite memory here so far at Evergreen?

"Favorite memory? I'd have to say for cross-country, probably getting my first team member to Nationals, Josh Klimek back in '04. That was exciting, and also just the first year we brought cross-country back to Evergreen. It was in a twenty-year absence from Evergreen."

What is the best part about coaching young athletes?

"Again, just seeing people grow, getting to know them as people, and seeing them graduate, and keeping in touch with them after they graduate, that's great, getting to know people, something that coaches get to do more than a faculty member can in a lot of instances, we see people for hours at a time, we take long road trips together, you end up going to people's weddings, you see the birth of their children, you know, just seeing that."

Sir, thank you very much for allowing me to interview you, and good luck on the season.

"Thank you Zach."

Zach Licht is a freshman enrolled in Looking Backward.

SPORTS
SHORTS

MEN'S BASKETBALL

The Geoducks (11-5, 6-4 CCC), led by sophomore Nate Menafee's 23 points, beat the Beacons of Northwest Christian College (6-13, 3-6 CCC) last Friday night in Eugene. Nick Moore, despite scoring on two points in the first half, went 4-for-4 from downtown and finished with 21 points. The true story was the Evergreen bench play, outscoring the Beacon reserves 26-6. Catch the men in action this Friday and Saturday night at the Green House.

WOMEN'S BASKETBALL

All five starters for Northwest Christian College (9-10, 3-6 CCC) scored in double figures last Friday night at Morse Event Center as the Beacons beat the Lady Geoducks, 65-57. Liz-Turner Bolton, fresh off her appointment as interim head coach, snapped the Beacons' six game losing streak. Evergreen (4-15, 3-7 CCC) struggled from all over, hitting only 37% from the field and just half of their free throws. Forward Jennifer Solberg led all scorers with 14 points and eight rebounds, while both Molly Clark and Kristi Auckland scored in double figures. The women in green return home this weekend, facing off against conference rivals Oregon Tech and Southern Oregon. Action gets started at 5:30 p.m. and the men's games follow.

~ DAVID RAILEANU

Details courtesy of NCC sports information

Hey, It's me...Jazz Handy... Lookin' for a cheap date?
No, not with me brainiacs...
at The Washington Center!

Announcing...

Ten Buck Tickets

Starting January '08 all student rush tickets to Washington Center events will be \$10...available all day the day of show at the box office...in person...with valid student ID.

Any level...any seat...based on availability.
Check out our upcoming events: washingtoncenter.org

Peter Pan, Capitol Steps, Tapestry Dance Company,
Gypsy, Angeliqúe Kidjo....

See you at The Center,
Jazz Handy

THE WASHINGTON CENTER
for the performing arts

512 Washington St SE · Downtown Olympia

COME JOIN OUR PACK!

GREAT WOLF LODGE
GRAND MOUND, WA

We are searching for the Greatest of the Great to open the new Great Wolf Lodge in Grand Mound, WA, a 398 all-suite resort with multiple food and beverage outlets, convention center and huge indoor waterpark!

We are currently searching for very talented, experienced and enthusiastic Pack Members to join our hospitality professionals full- and part-time in the following departments:

- HOUSEKEEPING
- SPA SERVICES
- WATERPARK
- RETAIL & ARCADE
- FRONT DESK
- MAINTENANCE
- FOOD & BEVERAGE

In addition to great opportunities for career development and advancement, Great Wolf Lodge is very flexible with school schedules, offers a competitive salary and benefit package along with an exceptional working environment.

APPLY AT OUR JOB FAIR
JANUARY 24, 25 & 26

The Olympia Armory
515 Eastside Street SE
Olympia, WA 98501

VISIT GREATWOLF.COM
FOR MORE DETAILS

Equal opportunity employer.
Drug-free workplace.

events

for the week of

January 24-31

Thursday, 24

- **Immigration 101 Workshop** with Border to Hosted by Carnival. SEM 2 A1105, 5:00 pm
- **Bringing Resistance Home with Kathy Kelly**, Hosted by SESAME, SDS and Olympia FOR, Lecture Hall 2, 7 p.m.
- **Mosca and the Meaning of Life**, An Evening of Animation and Perance Art, with Christine Panushka and Beto Araiza, 7 p.m., Comm Building

Friday, 25

- **Oregon Tech at Evergreen Women's Basketball**, 5:30 p.m. - 7:30 p.m. The Geoducks take on the Owls in the CRC Gym. Admission \$6, \$3 for seniors, military, teens 13-17, \$1 for kids 12 and under. Evergreen students are admitted FREE.
- **Subverting Rape Culture Workshops: Definitions & Framework** Contact Women of Color Coalition to register wocc.tesc@gmail.com, 867-6006 Prime Time A-Dorm, 6:00pm-9:00pm
- **Guitar Hero III tournament**, 6 p.m. - 8 p.m. Remember to bring your socks, 'cuz they're gonna' be rocked off! Open to everyone.
- **June Madrona, The Hail Seizures, Susie Asado (Berlin), Sibi (Berlin)**, 7 p.m. at Chez Puget. Free tacos & \$2 fresh juice, \$5
- **Oregon Tech at Evergreen Men's Basketball**, 7:30 p.m. - 9:30 p.m. A critical Cascade Conference game for the Geoducks as they host the nation's #6 team in the CRC Gym. Admission \$6, \$3 for seniors, military, teens 13-17, \$1 for kids 12 and under. Evergreen students are admitted FREE.
- **Fiction in the HCC**, 8:30 p.m. - 11:30 p.m. Welcome back the band Fiction!

Saturday, 26

- **Subverting Rape Culture Workshops: Impact & Responses** Contact Women of Color Coalition to register wocc.tesc@gmail.com, 867-6006 Prime Time A-Dorm, 10:00 a.m. - 4:00 p.m.
- **Lunar Spring Festival**, 2 p.m. - 4 p.m. A concert of traditional Chinese, Japanese, Indian music and dance. A co-production of TESC and SPSCC. at SPSCC Arts Center
- **Southern Oregon University at Evergreen Women's Basketball**, 5:30 p.m. - 7:30 p.m. The Geoducks take on the Raiders in the CRC Gym. Admission \$6, \$3 for seniors, military, teens 13-17, \$1 for kids 12 and under includes the men's game which follows. Evergreen students are admitted FREE.
- **Southern Oregon University at Evergreen Men's Basketball**, 7:30 p.m. - 9:30 p.m. The Geoducks try for a season's sweep of the Raiders in the CRC Gym. Admission \$6, \$3 for seniors, military, teens 13-17, \$1 for kids 12 and under. Evergreen students are admitted FREE.

Sunday, 27

- **Washington Student Lobby Board Meeting**, 1 p.m. Conference Room

Sunday, 27 continued

- A,B,C, John A. Cherberg Building, Olympia, WA - Amplify the student voice in Olympia. Learn how to lobby the legislature. Walk the marble halls. Network with students from across the state.
- **Late Marriage** - Film screening hosted by Evergreen Hillel. Lecture Hall 2, 3:00pm

Monday, 28

- **Garage Voice in concert**, 8 p.m. - 9 p.m.
- **David Price**, 7 p.m. Location: Lecture Hall 5 Sponsored by Students for a Democratic Society.

Tuesday, 29

- **Chris Jordan**, 3:45 p.m. in LH 1 Free and open to all. Seattle-based Chris Jordan is an internationally acclaimed photographic artist and social activist whose work explores the detritus of American mass culture.
- **Creative writing workshop** at 4 p.m. in The Writing Center, LIB 2304

Wednesday, 30

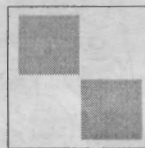
- **Focus the Nation: Finding solutions to global warming**. 8 a.m. to 5 p.m. Workshops and events in the CRC and SEM 2. A locally sourced lunch will be available in the Geenerly. Schedule available at focusthenation.evergreen.edu.
- **Creating a Climate of Change: A Community Forum on Climate Change in the Pacific Northwest**, DayTime: 8:00 am to 5:00 pm on Campus Evening: 6:00 pm doors open at the WA Center for Performing Arts goes until 9:00 pm Hosted by South Puget Sound CC, Centralia College and St. Martin's University Contact: ftncoord@evergreen.edu Cost: Free open to public
- **Grammar Garden: Learn grammar in The Writing Center, LIB 2304**, Wednesdays at 1 p.m.
- **Greener Organization meeting!** (in their HCC office), 5:30 p.m. - 6:25 p.m. - Weekly meeting of Greener Organization. Stop by to propose an event or to join in on the action!
- **Community Building Workshop in Primetime**, 6:25 p.m. - 8:30 p.m. Planning for Day of Absence/Day of presence.
- **Battle of Algiers** - Film screening and Q&A. Surviving childhood under occupation with Algerian-American Mohammed Bentlamsani. Lecture Hall 1, 7 p.m. Hosted by Mind Screen & SESAME. Part of the 5th Annual Middle East Film Festival: Origins, Exile. Refuge www.evergreen.edu/sesame.

Thursday, 31

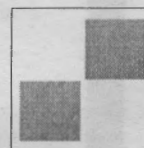
- **Geoduck Town Hall**, 7 p.m. - 8 p.m. Come share your opinions on student issues. Quit talking and do something!
- **Blue Scholars & Step Cousins** Opening the 5th Annual Middle East Film Festival. Hosted by SESAME at the Longhouse, 8:30 p.m. Tickets: Students \$10/\$13 \$15/\$18. Available at Rainy Day Records & TESC Bookstore.

upcoming events:

- **The Illuminated Ball**, Feb 2 at 8 p.m., is not only a key fundraiser for Olympia's Procession of the Species, it is an artful experience in its own right. This year will feature a floor show dance, live music, light and luminaria. At the end of the floor show, the New Orleans funk band, Bump Kitchen will perform. All of this plus food and drink at the amazingly cool Eagles Grand Ballroom at Fourth and Plum. Advance tickets are \$40 at Traditions or \$45 at the door. I recommend getting advance tickets.
- **Jennifer Finney Boylan** a teacher of writing, literature, and gender studies at Colby College will be reading from her latest book, *I'm Looking Through You: Growing Up Haunted*, at noon on Wednesday 6 February in B3107 Sem II.
- **Day of Absence & Day of Presence**, February 8 & 13 Supported by Appearing Task Force on Anti-Oppression
- **Women in Capoeira Angola**, February 15 & 16
- **Vagina Monologues**, February 15 & 16
- **Chibi Chibi Con Anime Conference**, March 1 & 2 Organized by the Giant Robot Appreciation Society
- **International Women's Week**, March 3 to 8 Organized by the Women of Color Coalition



Send your calendar listings to
cpj@evergreen.edu



group meetings:

MONDAYS

- Capoeira COM 209, 4:30-9 p.m.
- Copper Point Journal CAB 316, 5 p.m.
- EQA Evergreen Queer Alliance SEM 2 A2109, 3:30 p.m.
- Geoduck Union CAB 3rd Floor Pit, 4 to 6 p.m.
- Flaming Eggplant CAB 108, 4-6 p.m.
- Student Video Gamers Alliance CAB
- TV Lounge 3rd Floor, 6-9 p.m.
- Women of Color Coalition CAB 206, 4-5 p.m.
- Yarn Pioneers SEM 2 D3107 5:30-7 p.m.

WEDNESDAYS

- Amnesty International CAB 320, 12:30 p.m.
- ATF Appearing Task Force on Anti-Oppression CAB 320, 1 p.m.
- Bike Shop 2 p.m.
- Chemistry Club LAB 2 2207, 1 p.m.
- EARN Evergreen Animal Right Network
- Vegan Potluck CAB 320, 5:30 p.m.
- Evergreen Hillel CAB 320, 3 p.m.
- Evergreen Pre-Health Society SEM 2 A3107, 12:30-2 p.m.
- Evergreen Wilderness Adventure Group SEM 2 A3105, 1 p.m.
- Gaming Guild CAB 320, 5:30 p.m.
- Geoduck Union SEM 2 C1107, 1-3:00 p.m.
- GRAS Giant Robot Appreciation Society Anime Screening CAB 3rd Floor TV lounge, 5 p.m.
- Hip Hop Congress Library Proper Room 3303, 4-5 p.m.
- MEChA CAB 320, 4:30 p.m.
- Musicians Club CAB 320, 1:30 p.m.
- SESAME Students Educating Students about the Middle East, SEM 2 E2107, 1 p.m.
- SESAME Teach-In & Film Festival Committee, SEM 2 E2107, 4:15 p.m.
- SESAME Iraqi Student Committee, SEM 2 E2107 3:15 p.m.
- SDS Students for a Democratic Society CAB 320, Solarium, 6-8 p.m.
- Umoja CAB 320 third Floor Pit, 2-3 p.m.
- Women's Resource Center CAB 320, 1:30 p.m.
- Writers' Guild Writing Center, 4:00 p.m.

THURSDAYS

- Common Bread Longhouse 1002, 5-8 p.m.
- Sabot Infosquat Library Proper Room 3303, 4 p.m.
- Generation Friends SEM 2 C1105 6-8 p.m.
- VOX CAB 320, Solarium, 5-6 p.m.

SATURDAYS

- Capoeira COM 209, 12:30-3:30 p.m.

CPT COMICS PAGE

NOW WITH 10% MORE TRANSFAT!



Couelines



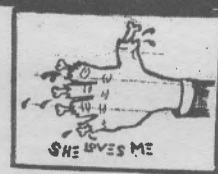
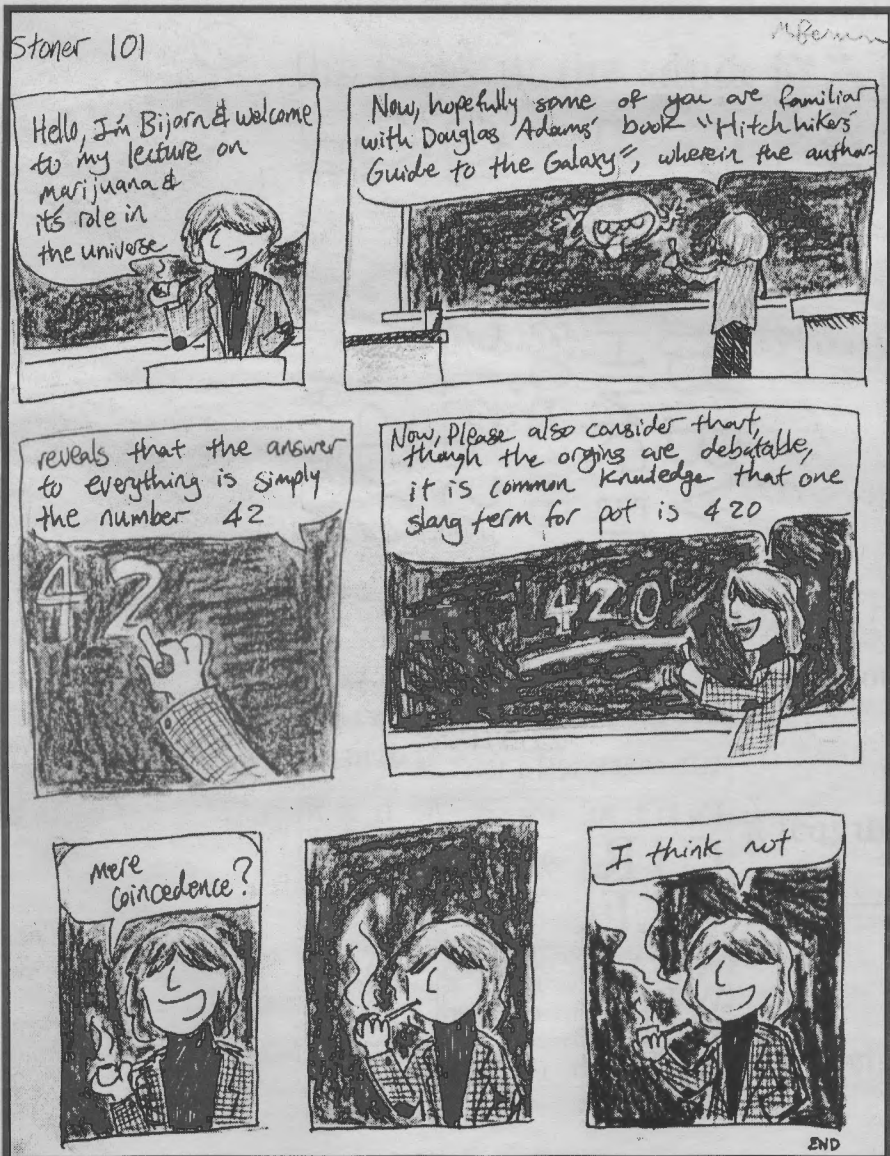
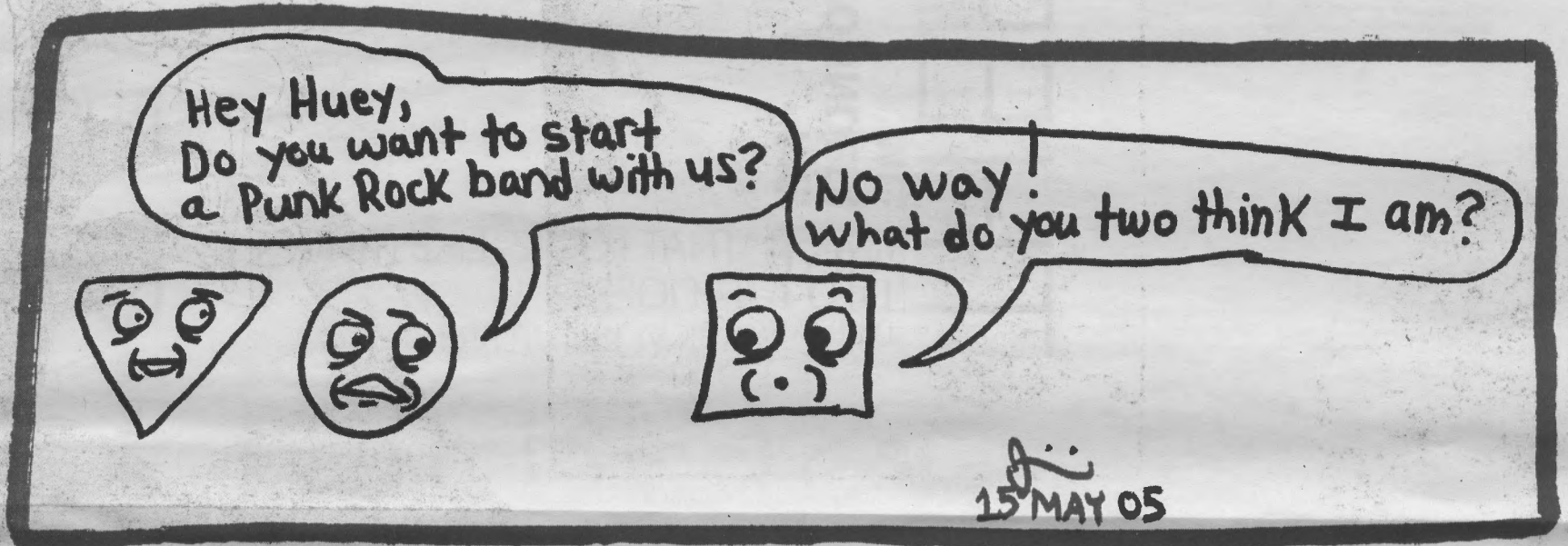
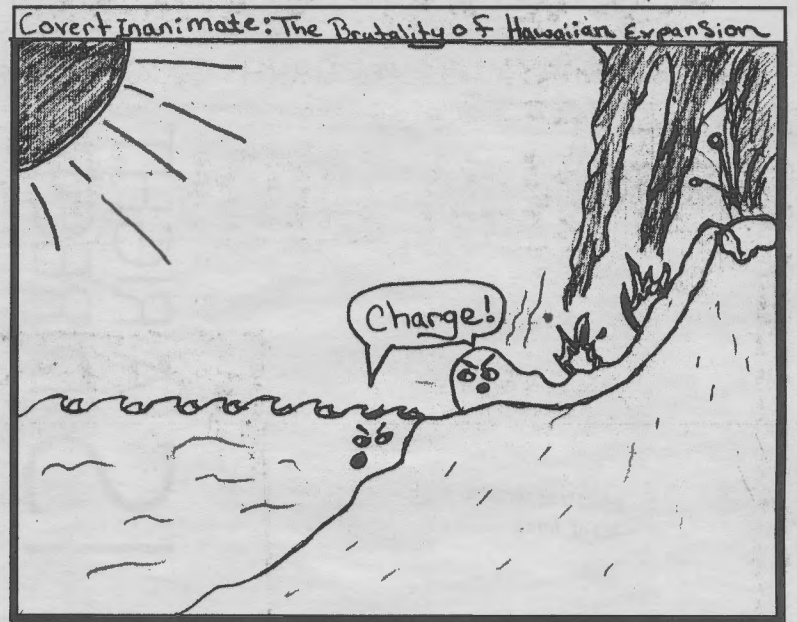
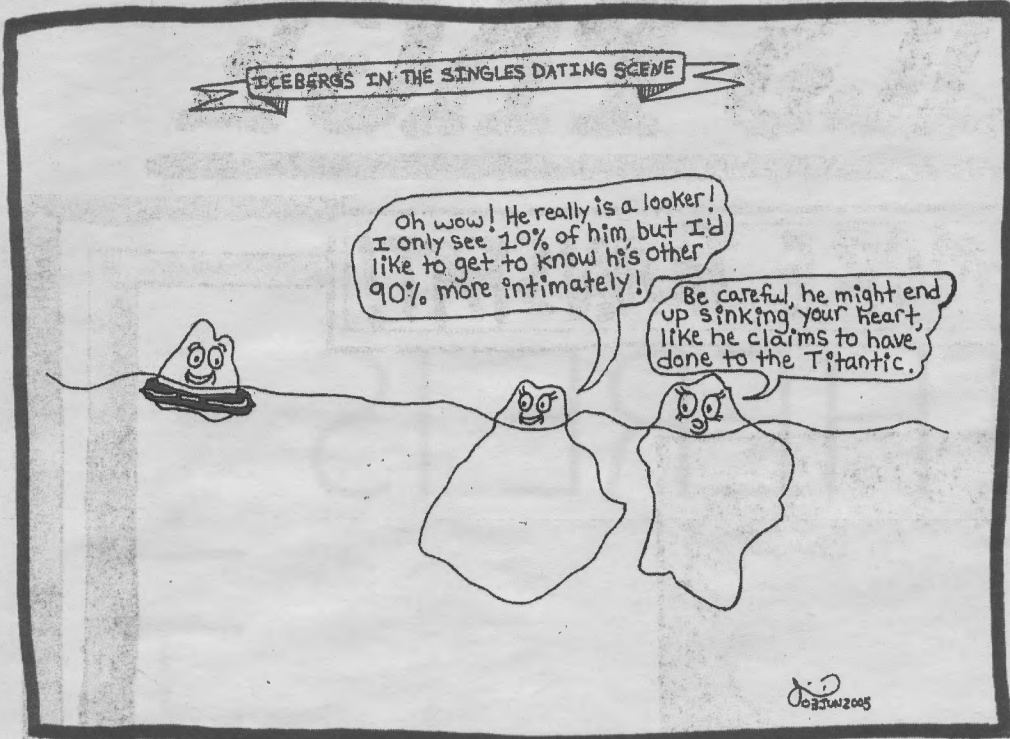
Tell your friend, roommates, love or sweetie something special in the Cooper Point Journal!

Due February 8

30 words for \$2

Come visit us in CAB 316 or see us on the 2nd floor of the CAB January 29, 30, and 31 for our bake sale!

Remember, names and symbols count as words. No guarantee that any non-text will be reproduced.



what was written
out of birds.
by:
otis pig

read with a ruler
&
a mirror (or whatever).

THERE IS A RIGHT DIRECTION

THERE IS

A RIGHT KIND OF
LONELINESS, LIKE

THERE IS A RIGHT
THING TO DO

ME:
WOUNDED:
ME:

conversation with wounded:

WHAT
DID I
DREAM

"THAT LOOKS LIKE IT HURTS."
"IT DOES."
"SEE YOU LATER."

A RIGHT KIND
OF LOSS, LIKE

THERE IS

faces in the sand, i've seen them.

"GET OUTTA MY INSIDES, UGLY"
"BUT I CAN'T LIVE WITHOUT YOU, OTIS PIG"
"CAN THIS REALLY BE LOVE?"

LOOKING
OUT THE
WINDOW
of our

i've seen

ME:
WOUND:
ME:

conversation with wound:

the faces in the sand.
THE EARTH HAS NO AGE,
ONLY WISDOM.
ONLY STEPS, &
THE STEPS OF SILENCE.
EVERYTHING ELSE
IS OUR BAD.

i saw your name was written in the sky.

RECITAL
HALL
THE COPS

WERE
DOING
ALL THE
KILLING

THE THIN
BLUE LINE
HAD BENT

it was written out of birds—the mistakes that make life

INTO A
CIR
CLE

"knock."

WHEN
THEY
COME
THROUGH
THE DOOR

warm—i only for an instant.

WHAT
WILL
WE DO

ONCE
WE'VE
LOST
OUR
LIVES

WHAT
WILL
WE
FIND
?

they were flying home.