

SEE-PAGE

BARUCH RA-EL CAHN

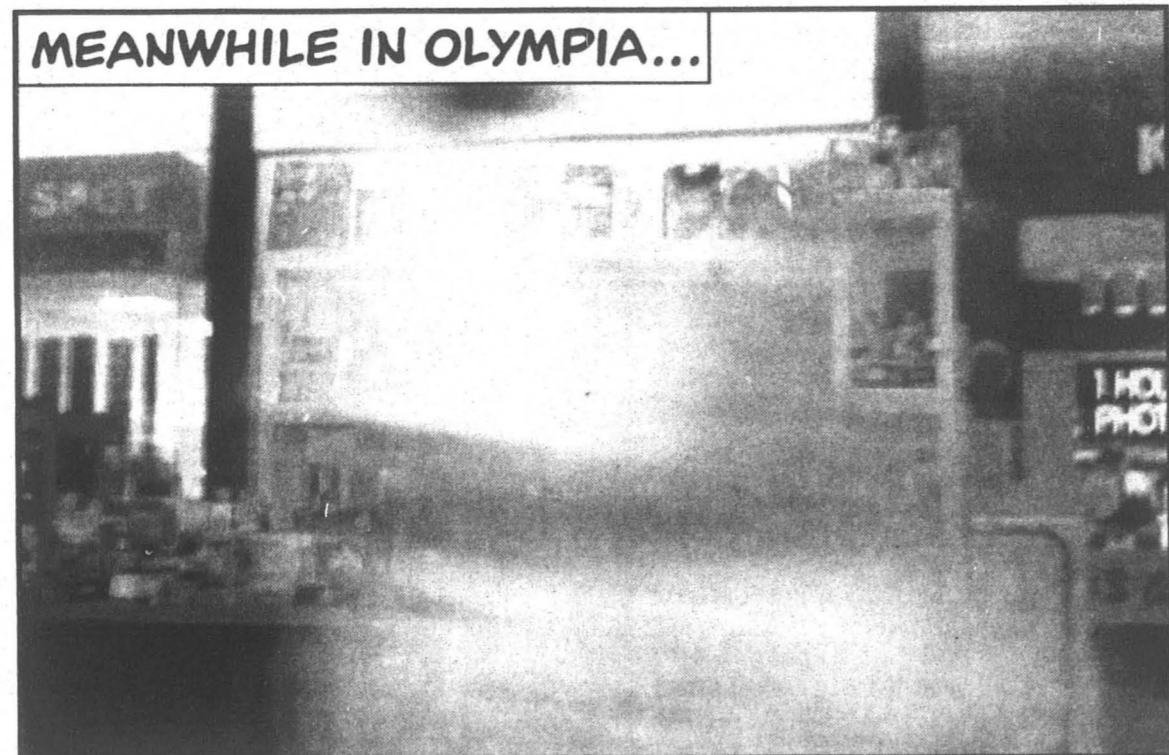


Yo sweep this up mr. Garbage man. I got a whole heap a mess that just won't quit. I need your help. Your big ass strong muscles and nostrils that don't smell. Are you ready to go through my pizza crusts, mcdonald's boxes, used kleenex and Q-tips? Do you mind if my spit from the night I was so stuffed up I thought I'd never breathe again oozes down your shirt as you pick up my Glad bag of trash? No? Good, because that's your damn job you mindless sex-starved peon from New York.

I got more trash than you can handle I bet. I got cigarette butts, hairballs, ravioli crusts, and even my girlfriend's crusty tampons. I have 5 tons of old bank records, school papers, newspapers, and insurance premium notices (not to mention the junk mail). So, what are you going to do for me today? I know you are getting paid as much as I am at my job in a downtown lawyers office, so you don't deserve any breaks. Maybe if you start living your life as a Christian with respect for all and humility that would be a start. I'm sick of seeing your haughty attitude as you pick up everyone's trash and smirk as if you know something none of us white collar types will ever know. I'm sick of hearing your half-drunk hoots at my girlfriend. I know you'd kick my ass if we fought on the street. You could handle me and my whole office at one time (except maybe my boss who runs 10 miles a day—so he'd probably get away). The thing is we would be on your ass so hard you'd have a hard time breathing and shitting without blowing out your brains or grunting out your lower intestine. You and I both know whose side the law is on, and it ain't you—so I got no fear for you, no eye contact either. **WHOSE SIDE IS GOD ON?**

**WHOSE RESPONSIBILITY IS IT GOD DAMN IT!**

—B. Con



cooper point journal

october 20, 1994

this week's see-page was edited by Pham Nguyen, so there.

# Cooper Point Journal

OCTOBER 27, 1994

THE EVERGREEN STATE COLLEGE

VOLUME 25 ISSUE 5

## Illness concerns Childcare Center

by Nathan Woods  
CPJ Staff writer

On Friday, Oct. 14, The Evergreen Childcare Center was notified that a child attending daycare had been infected with a confirmed case of whooping cough.

Whooping cough, or pertussis, is an aerial spread bacterial infection. The disease is carried in the nasal passages and distributed through person to person contact.

After confirmation, the center was contacted by The Thurston County Health Department in an effort to safeguard the situation.

The safeguarding process involved disease identification, environment assessment, general health testing and prophylactic treatment.

Health Department officer Genie Night reported that they have mitigated the danger of the illness at the center.

In a letter to the Center, Dr. Diana T. Yu, health department officer, described the infection as, "Cold-like symptoms followed by an irritating cough [which] can lead to violent coughing attacks which may cause vomiting." The disease can also develop into pneumonia or cause seizures and eventually lead to death.

According to Yu, immunization is the number one defense. Individuals who are not immunized are at greater risk than those who have been successfully immunized.

State law mandates that a certificate of immunization status be completed before a child can attend the center.

The U.S. Department of Health recommends immunizing against pertussis between the ages of two and 18 months. The immunization process requires three repetitive

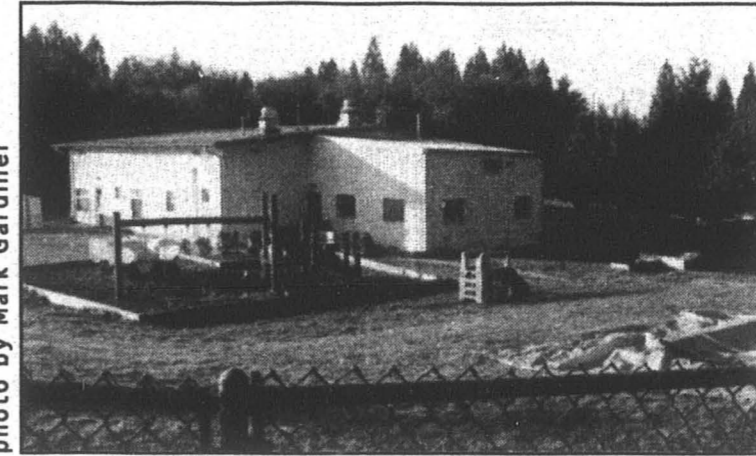


photo by Mark Gardiner

TESC Childcare Center

introductions of the diphtheria tetanus pertussis vaccine. In addition, two more "booster" shots are required before the subject can be successfully immunized. Because children under the age of one have not completed the full course of immunization, many infants are not sufficiently protected.

Because of the age of the child at the center, he had not had received the full spectrum of treatment.

Due to the center's organization, the Department was unable to immediately determine what age group had been responsible for introducing Pertussis. After an analysis of the Childcare Center, the health officers determined that only children who had come into direct contact with the infant were in significant danger. The department also recommended that all children and staff see a doctor and begin treatment with antibiotics.

With a rise in whooping cough cases in the last year (96 in the state of Washington) the Health Department urges everyone to become immunized.

## Evergreen Student Alliance demands recognition of student government

by Catherine Wilson  
CPJ Contributor

Unlike most colleges, TESC does not recognize a student government. A group of students are working to change that.

The Evergreen Student Association (ESA) is attempting to enter into a co-management agreement with the Board of Trustees. This allows student participation in Board decisions.

Following a number of failed attempts to create a student government at TESC, the ESA was formed on November 4, 1991. Composed entirely of Evergreen students, its purpose is to create a democratic student government.

The ESA has attempted to do this by adopting an open board policy. This means that any interested student can join its Board of Directors. The Board of Directors can include any number of students at one time. This is meant to ensure students' ability to join in the decision making process, something that ESA members do not believe that a traditional representational government can do.

"If it was a structure that excluded students right to make decisions," said Patricia Imani, a member of the ESA Board of Directors, "I would oppose it."

Although the ESA's primary objective is to organize a democratic student government, it has formed two departments to pursue other goals. The Evergreen Student Lobby is a facet of ESA formed to approach the Washington State Legislature regarding student concerns. The Evergreen Student Interest Research Group (ESIRG) is designed to operate much like WashPIRG. Currently ESIRG is attempting to survey students concerning governance at Evergreen. The ESA will create new departments according to interests.

At the end of spring quarter last year, the ESA Board of Directors consisted of seven people. The group had also collected nearly 500 signatures representing student support.

"At that time we could have legitimized ESA," said Imani. However, due to a lack of funding the ESA was not

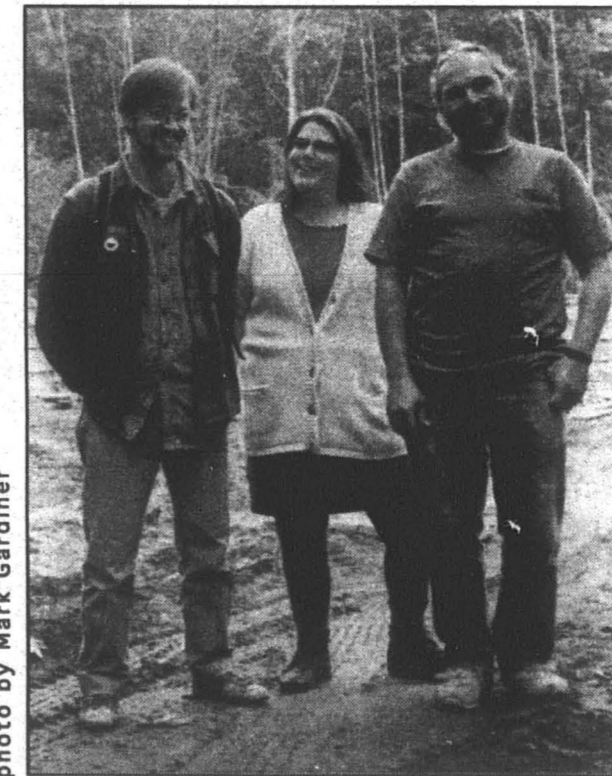


photo by Mark Gardiner

ESA Board of Director members Brian Baxter, Patricia Imani and Mario Flores

recognized, a problem that continues to plague the organization. According to ESA members, the S&A Board, which distributes funds to student organizations, has not been sympathetic to the ESA.

Mario Flores, one of the students who founded the ESA in 1991, believes that this is due to a lack of student support.

see Governance page 5

## Advocates respond to "False Memories"

Red Square Arson: Analysis

by Oliver Moffat  
CPJ Contributor

Chuck Noah's trailer was burned down early in the morning on Oct. 13 after his protest on Red Square. The identity of the arsonist is unknown, but many understand the arsonist's possible motivations.

Chuck Noah's daughter says she was sexually abused by him as a child. She says she remembered the alleged abuse while in counselling 30 years after the abuse.

Chuck Noah denies the abuse and is a member of the False Memory Foundation (FMF), a group of alleged child molesters, their families and supporters who claim that therapists have brainwashed or convinced their adult children they were sexually abused.

"There are good therapists and I'm not saying there aren't little babies being molested. What I am saying is that this repressed memory and everything is tearing up a tremendous amount of families and it all starts with *Courage to Heal*," Noah said referring a book commonly used during the healing process of sexual abuse survivors. Although Noah could not name the authors of the book, he derided their qualifications.

In another recent study, author Lynda Meyer Williams interviewed 136 adult women who were known to have been sexually abused as children. The study found that after 17 years 38 percent of the women had forgotten entirely about the abuse.

Some psychologists call this Repressed Memory Syndrome. They say that children who are sexually abused develop multiple personalities and forget about the abuse in order to survive. This has also been found in Vietnam veterans and Holocaust survivors.

Anne Bridges, Agency Coordinator at Safeplace Women's Shelter in Olympia, says that although there are instances of false accusations of childhood sexual abuse, it is very difficult to prove that a memory is in fact false or not. She says, "each side has its own statistics."

Many people feel that Chuck Noah and the FMF are discouraging survivors of sexual abuse from speaking out against their perpetrators and they feel that the FMF is a backlash against feminism.

Todd Denny, a local sexual assault activist, said, "People are feeling more comfortable coming forward and sharing their stories of victimization, whether its sexual assault, incest, or domestic violence..." He said perpetrators now have a new approach to get them off the hook. He added, "Now they can talk about False Memory Syndrome instead of just denying it."

Some students took offense at one of the signs Noah displayed at the Evergreen Campus which called for the release of Paul Ingram who confessed to and was later convicted of ritual child abuse in Thurston County in 1988.

Paul Ingram, a Thurston County Sheriff's deputy, Chair of the Republican Party and a member of an evangelical church, later recanted his confession. Supporters of Paul Ingram have initiated a movement to free him from prison.

Some Evergreen students are angry that Paul Ingram, Chuck Noah and the FMF have received positive media attention and worry that it will discourage survivors of childhood abuse from telling their stories.

"Now that people are coming forward, this looks to me like a mechanism to either discount what people say when they finally do come forward or to even keep them from expressing what they have to say," said a female TESC student. She added that sexual abuse, "is something that has been for many years swept under the rug and kept secret. And that's one of the powers of abuse."

Anne Bridges of Safeplace says that, "...just because (the FMF) is getting media attention doesn't mean that what they have to say is valid..." she says, "...people should challenge what their motives really are."

**EVERGREEN**

## Student Originated Studies presented

Proposals are due Thursday Nov. 10 by 5 pm to Marilyn Frasca, LAB I for the Student Originated Studies program. Phil Harding and Marilyn will act as sponsors for groups of students who design and submit a curricula plan for winter quarter. They will base their selection on the following criteria:

1. The group must involve no fewer than six students with priority given to larger groups.
2. The proposal must include: (a) a goals statement or program description, (b) a description of weekly activities, meeting times and places, (c) a rough draft of a covenant describing the responsibilities and obligations of all participants signed by all students involved, and (d) groups must negotiate with Phil and/or Marilyn regarding their participation in the program activities (Subcontractors will be suggested or approved when appropriate).

If your proposal is selected during the first cut, you will be invited to an interview and asked to provide support materials and student portfolios.

Phil and Marilyn agree that this is not the place to do beginning studies. It should be seen as an opportunity for students who share similar skills and common interests to do advanced work that may have grown out of previous academic projects and programs. Remember this is not a class that you sign up for, you must gather a group of like minded students and design the class yourselves.

## Student Seeks Environmental Tibits

David Morse, an Evergreen MES student, is looking for environmental tibits to broadcast on KAOS 89.3 FM. Any type of environmental news or information is welcomed, and shall be broadcasted throughout Thurston County during prime time.

To get those tibits to Morse, send them c/o KAOS, or c/o the Master of Environmental Science Program, voice mail at x6479, or leave a note in his box in the MES Lounge, LAB I.

## Learn Natural Family Planning

Connie Frey, a certified educator of both childbirth and

## OLYMPIA Weight Watchers billboard altered

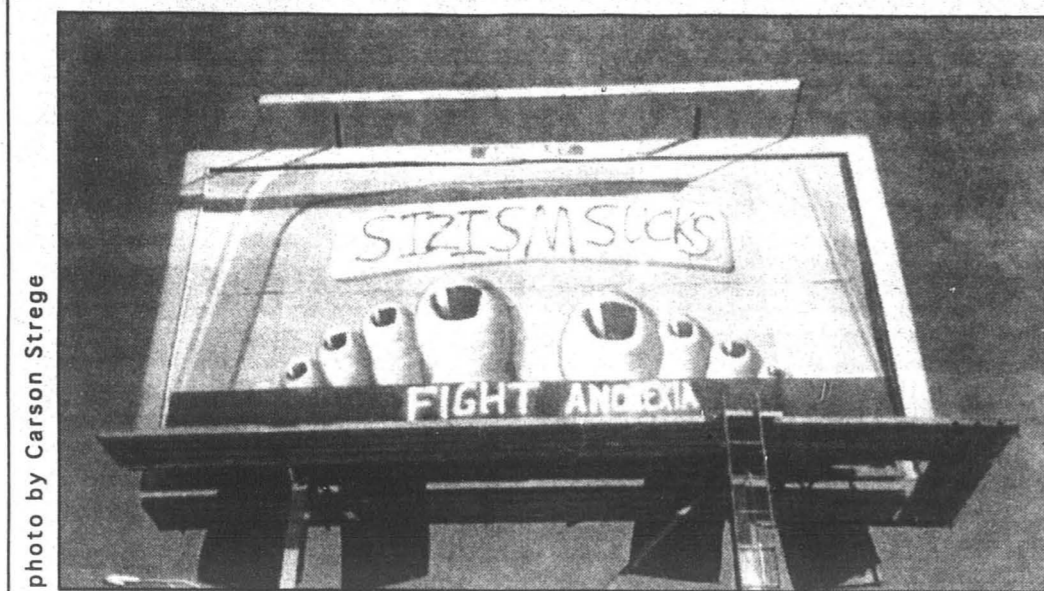


photo by Carson Strega

On Harrison Ave. on the west side of Olympia, a Weight Watchers billboard advertisement which used to read "1-800-651-6000, Weight Watchers" was painted over with the slogan "Sizism sucks, Fight anorexia."

the ovulation method, shall be teaching a month long course on the ovulation method. The method entails learning to recognize and chart daily bodily changes in women, enabling them to determine fertility. The once a week evening classes cost \$40, which includes unlimited individual meetings, and partners are encouraged to attend.

For more information, contact Connie at 352-4828, or attend the introduction and discussion on Nov. 2, from 7-9 pm in LIB 2218.

## Conflict resolution presented today

On Thursday, Oct. 27, Lynn Stockwell, Coordinator for the Evergreen Center for Mediation Services, will facilitate a discussion on ways to resolve conflict and the basic strategies of mediation. The presentation shall take place in CAB 315 at 5 pm.

**THURSTON CO.**

## Cyclists asked to join Advisory Committee

Thurston County cyclists interested in improving conditions for themselves

and fellow cyclists are invited to join the Washington State department of Transportation's (WSDOT's) Bicycling Advisory Committee.

The committee meets three times a year, and work closely with the regional WSDOT office in Tumwater on bicycle related issues, programs, and projects.

To apply, send a resume and cover letter by Nov. 11, 1994 to:

Mike Dornfield  
Washington State Dept. of  
Transportation  
P.O. Box 47329  
Olympia, WA 98504-7329

For more information about applying, and duties as a member of the committee, call (206) 705-7258.

## Abbey Players do Arsenic and Old Lace

The Abbey Players announce the opening of the comedy *Arsenic and Old Lace* on Oct. 28, at the Washington Center for the Performing Arts, Stage II, in Downtown Olympia.

The play will run from Oct. 28, 29, Nov. 3, 4, 5, 10, 11, and 12 at 8 pm and Oct. 30 and Nov. 6 at 2 pm.

Tickets are on sale, and prices are \$13 for adults, \$6.50 for children 12 and under, and \$11 for seniors and students on Thursdays only.

**Errata**

In our Oct. 13 issue, we printed an erroneous paragraph regarding the protest on Red Square by Chuck Noah. We printed that, "Chuck Noah drove his RV on to Red Square early Wednesday morning to protest false accusations of child abuse and sexual molestation."

What we should have printed was, "Chuck Noah drove his RV on to Red Square early Wednesday morning to protest what he feels are false accusations of child abuse and sexual molestation."

We apologize for this oversight and the confusion it may have caused. In other news, the Wednesday at midnight showing of *Infectious Waste Theatre* airs on TCI King County cable access channel 29 in the Seattle area.

We also apologize to the Gaming Guild for misrepresenting their potluck as a place where food would be plentiful.

**Saras Kitchen**  
"Naturally Wholesome Northwest Fare"  
Vegetarian, Vegan, & Seafoods  
At the Olympia Farmers' Market during Market hours  
and 113 4th Avenue West  
Tuesday - Friday 11AM - 9PM  
Saturday 9AM - 9PM  
(206) 705-3645

**Eastside Club**  
Breakfast Specials, Burgers, Vegetarian Sandwiches, Homemade Soups and more...  
"Organic French Roast"  
Members of the Equal Exchange.  
Bring food bank donations for 10% off.  
Monday-Saturday, open at 8am  
406 4th Ave E.  
(Look for our pink door, or through the "window" of the Eastside Club)

# TESC's Star Trek Program beams into national media

by John R. Ford

CPJ Media Watchdog

When I first wrote of "Where No One Has Gone Before," Evergreen's 32 credit coordinated study program on cultural phenomenon, back in the spring of '94, I had a gut feeling that it was the stuff that national news was made of.

I didn't know the half of it. Although it took until the actual start of the fall quarter to hit the media "fan," hit it did, and with a ferocity that amazed even my cynical soul.

It even hit my mailbox, but more about that later...

Class facilitators Carrie Margolin and Argentina Daley are, at this writing, still being interviewed by the various media—TV, radio and print. Not even Yale's Klingon language course has garnered such attention.

Here's the rundown as of Oct. 11, provided by the class's own newsletter:

**Television**

Oct. 5—KOMO Northwest Afternoon Live, with George "Sulu" Takei as guest.

Oct. 7—CNBC What's New? - a call-in show on America's Talking Network—a live phone interview

KIRO, a piece on the nightly news that was also rebroadcast on CNN worldwide.

**Media Analysis**

**Radio**

- Oct. 4—KHOW, Denver, Colo. KXL, Portland, Ore. WOIA, San Antonio, Texas
- Oct. 5—KUBE/KJR, Seattle
- Oct. 6—WCBS, New York WBSM, New Bedford, Mass. 66CFR, Calgary, Alberta, Canada

**Newspaper**

- Oct. 2—The Daily World, Aberdeen
- Oct. 3—New York Times
- Oct. 4—The Sun, Bremerton, Wash. Dayton Daily News, Dayton, Ohio
- Oct. 5—Newspaper, Evanston, IL
- Oct. 7—Newspaper, Albuquerque, NM
- Oct. 8—Seattle Post-Intelligencer (color pic. on cover of Living Section) Connecticut Post, Bridgeport, Conn.
- Oct. 11—Union-News, Springfield, Ma.

That last one, from Springfield, Mass., well, that story I promised you later.

A news wire service ran that *New York Times* piece it had gotten from Seattle, complete with quotes from an interview with one of the students enrolled in the course as well as my rebuttal printed in the *CPJ* to a



graphic by Aubrey Pullman

letter writer critical of the course.

The lines, "I recommend less caffeine and more fiber," will be following me for eons to come. The article as a whole caused a Springfieldian to write me, asking my help in locating a "mystic" who had not only developed a method of psychically recording thoughts on video tape, but had perfected a faster-than-light "warp-drive."

He even included a sample of the warp formula (in actuality a page of complete gibberish in the computer language BASIC), and a self-addressed stamped envelope. The

tone and content of the letter convinced me that its writer was at least a few McNuggets shy of a Happy Meal.

It also underscored what this course is about — the sheer power of science fiction as a medium and Star Trek as a part of that medium. Author Camille Paglia has said that America is its popular culture and I am inclined to agree. This course isn't about "space cadets," it's about all of us, our hopes, dreams and wishes. And we're studying it right here at Evergreen, while the world watches us.

## TESC violence on the rise

by Lyn Iverson and Mark Gardiner

CPJ Intern Reporting Team

During the past few weekends there have been multiple incidents at the dorms and mod units that required the assistance of resident managers, campus security, or the Thurston County Sheriff Department to resolve. One of these incidents resulted in physical violence and the arrest of two people.

Is crime on the rise here at Evergreen? Statistically, crime is on the rise in Thurston county and being a part of Thurston county, TESC is included in those statistics.

"Some people have a myth that we aren't part of the 'real' world, but we are," said Linda Hohman, Acting Director for Residence Life and Administrative Services.

Is there a pattern or common denominator involved with this rise in crime here at TESC? For some of the crimes committed on campus there is, and it's the abuse of alcohol. The frightening aspect of this common factor is that alcohol related crimes tend to be more violent.

"You can pretty much figure that when people get a little too much alcohol

**Analysis**

they get a little crazy," said TESC security officer Cebine Riggins.

On Friday Oct. 7, a partygoer in A-dorm got out of control and threw a chair off of the top of the building, nearly hitting a pedestrian walking underneath. This instance is still under investigation.

The weekend of the 15th brought more violence that appears to have been alcohol related. A party in the mods was "crashed" by some off-campus people. One of the party crashers became physically violent and punched another person at the party. The resident manager was called, he called Campus Security, who, due to the violence involved, called the Thurston County Sheriff Department to assist.

According to the security and sheriff reports, the woman was visibly intoxicated, verbally abusive, resisted removal from the residence, assaulted the security officer, and resisted arrest by the sheriff.

Another of the party crashers  
**see Campus Violence page 4**

## Jervis fears political climate may interfere with higher ed

by Rob Keefe

CPJ Contributor

Feeling a political climate filled with skepticism towards higher education and the value of the public's investment in it, President Jane Jervis, expressed her concern as to the effect of such skepticism on how the college assesses itself.

She first presented her ideas during the Oct. 10, 1994 meeting of the Presidential Advisory Board, addressing the committee's query as to what she felt were concerns for the near and mid-range future. She recently outlined the topic for the *CPJ*.

The issue is outcome assessment. Outcome assessments seek to delineate growth of knowledge in students in their four or fourteen years in school, seeking to answer: "Has the student learned anything?"

The Higher Education Coordinating (HEC) Board began funding college outcome assessments in 1989. At that time, there was much controversy over who would administer the assessments and how. Eventually, the HEC Board allowed for local autonomy in developing assessments.

"How do we know that [someone] lacks good critical thinking, good problem solving? How do we know? How do you measure that? I don't know; but I think we better find out, otherwise someone's going to tell us. And we're not going to like it," said Jervis.

The person responsible for the assessments, Steve Hunter, Director of Research and Planning, told the *CPJ* he hoped the development of new methods of assessment would not overshadow putting current assessments to use. Prior instability has made it difficult for upper administration to provide leadership with the faculty in tackling problems pointed out in previous assessments. Now with President Jervis and new elected Provost Barbara Smith filling in the holes, Steve Hunter feels the time is nigh to put the assessments to use.

**LILLY ROAD OPTICAL**  
"Look through the right of Lilly Road."  
Quality Spectacles  
Flip Shad  
An easy no...  
418 Lilly Road

Cafe **giant**  
Faster, Stronger, More Awake  
Open 8am to Midnight  
Closed Monday  
204 5th Avenue S.E.  
you know, downtown...  
...Olympia  
705.8040  
coffee & food

**BAGEL BROTHERS**  
Bagel Bakery & Sandwich Shop  
We're baking your bagels right now with honey, No Sugar  
We're in Capital Village between Ernst and Payless on Cooper Pt. Rd.

Games • Maps • Posters • Coffee  
**Orca BOOKS**  
We're the largest Used Bookstore in town.  
Open Daily • Open Late  
M-Th til 8 pm • Fri & Sat til 9 pm  
509 E. 4th Ave. • Olympia • 352-1123

The Program From Addiction to Wellness invites you to this week's Wednesday evening workshop:  
"Nutrition and Wellness" by Dick Nunez, Health Ed.  
November 2nd, 6pm-8pm in the Library 3500 Lounge.

See me at:  
Mon through Fri - 7 to 7  
Sat - 8 to 6  
Sun - 8 to 5  
phone 352-3676  
for a bagel - for a sandwich for a dozen

**Revolt!**  
Cooper Point Journal wants you to help with the news that matters to you.

# Act now, and you could have an internship at the state Capital

by Lyn Iverson  
CPJ Intern

Academic Planning & Experiential Learning (APEL) has information regarding several internship possibilities for Winter Quarter, including openings for students interested in working with the Washington State Legislature.

The legislative internships vary from working with the Senate or House of Representatives and the Washington State Attorney General's office to the Washington State House of Representatives Video Services and Photographic Services.

Those interested in working with the legislature through an internship need to contact APEL soon. Those who haven't had an internship at TESC before need to attend an orientation workshop to learn about the internship process at Evergreen. There is no sign-up required, just show up at the scheduled time and place.

Contact APEL for a detailed schedule of internship-orientation sessions.

orientation sessions.

After attending an orientation meeting, an appointment is needed to meet with an internship counselor. APEL recommends bringing a resume to this meeting. Once those obligations are met, apply for the position and find a faculty member to sponsor the internship.

When the internship is confirmed, the field supervisor, faculty sponsor and intern work together to complete an appropriate Internship contract. The typewritten contract is due at Registration and Records by Jan. 5. Internships last one quarter only, so those wishing to extend their internship must complete a new contract.

Some internships are paid, some are volunteer and many of the deadlines for application are coming up in early November.

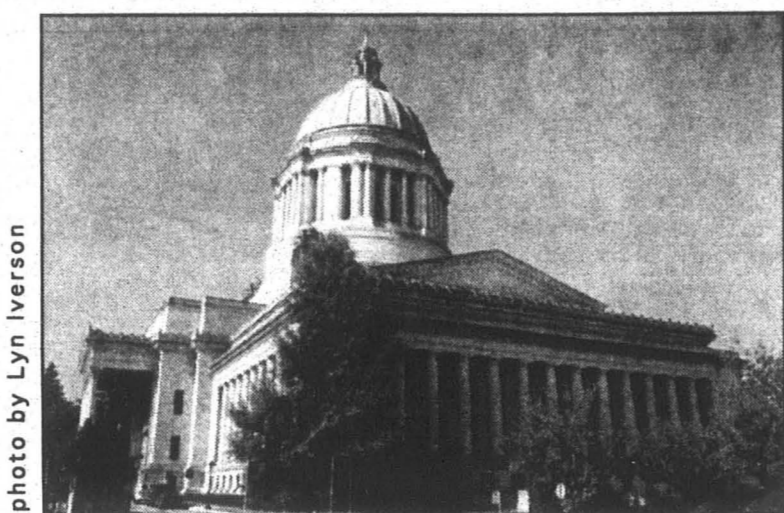


photo by Lyn Iverson

Washington State Capitol

For more detailed and complete information regarding legislative and many other interesting internships, see a counselor at APEL in LIB 1401 x6312. APEL's drop in hours are Monday through Friday 10:30-noon and 1-5 pm.

## Campus Violence from page 3

became verbally abusive and threatening in response to the officers arresting the woman. He was "warned repeatedly to disperse or he would be sprayed with Aerosol Subject Restraint" according to the sheriff's report. He refused to leave, continued to act in a threatening manner, was sprayed with ASR and arrested for obstructing justice. This man was also visibly intoxicated.

According to the Sheriff's report, during her ride to the jail the woman "repeated not understanding why she was going to jail for 'just being drunk'."

"It's a concern because they were serious incidents because there was assaultive behavior," said Art Costantino, Vice President for Student Affairs.

There are other crimes being committed on campus, such as the burning incident in Red Square, vandalism of vehicles, theft, indecent exposure, and rape.

According to campus security and members of the housing staff, many of the crimes here at TESC are not committed by students, but by "outsiders," people not from the Evergreen community.

Most of us here at TESC would like to think that this is a safe community, that nothing could ever happen to us, but

that is not a realistic way of thinking. We are not separated from society with walls other than the ones we raise in our own minds.

In the end, we cannot expect the burden of protection to fall entirely on Public Safety or sheriff department forces. We must learn to prevent crime and to protect ourselves from it if we want to retain the kind of lifestyles we hold as ideal.

"I think if there's a cautionary note in all of this for students is to think twice about opening their apartments to people they don't know well," said Costantino.

Public Safety has repeatedly stressed the need for members of the Evergreen community to be aware of the possible crime situations and to prevent them.

Pretending that the "outside world" cannot enter and/or harm us here at Evergreen is naive and potentially harmful.

You don't have to accept violence, but be aware that it does exist, even here at Evergreen. Protect yourself, and help prevent crime.

If we stop making it so easy for criminals, they won't find it so tempting to victimize us.

### Some tips to keep safe:

- lock your doors,
- know the people you invite into your home or apartment,
- lock your car,
- make sure valuables aren't in plain sight
- call for an escort when walking anywhere at night,
- report suspicious activities you see to the authorities,
- be an active participant and member of your community,
- get to know your neighbors, apartment mates and others in your area.

# John Bumford for Prosecutor



John Bumford, Senior Deputy Prosecutor

Endorsed by the Thurston County Environmental Action League.

**Q: Do you believe in programs aimed at preventing the causes of crime?**

**A:** Absolutely. As a former caseworker I've seen how effective good prevention programs can be at reducing the causes of crime. We must continue to mobilize the community to get at these causes and be more innovative in preventing crime. My work for the Olympia Child Care Center and the United Way and my financial support for Safeplace and activities like the Yelm Skateboard Park have been my personal contributions to making our county a better and safer community.

**Q: Why do you want to be Thurston County Prosecutor?**

**A:** I want to make Thurston County a safer place by holding criminals accountable for crime and restoring credibility to the criminal justice system.

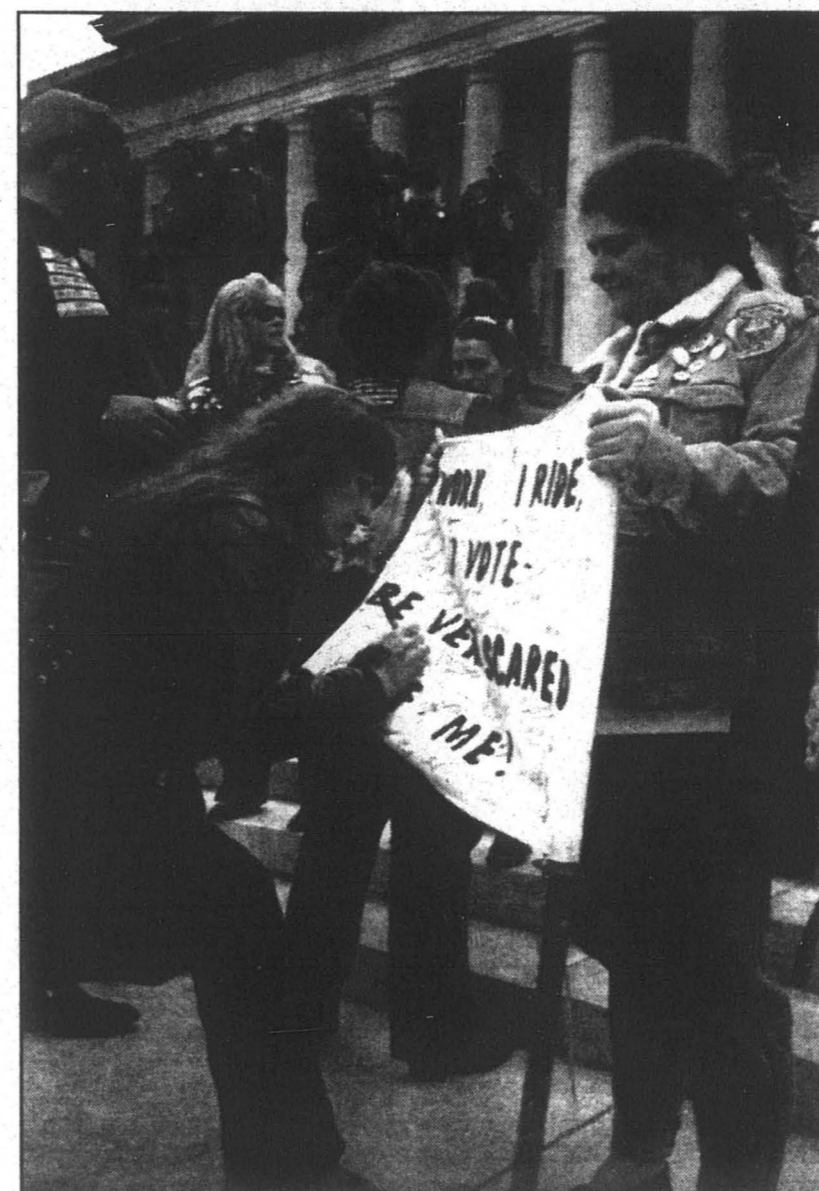
**Q: Why do you think you are qualified to be the Thurston County Prosecutor?**

- A:**
- I have over 15 years experience as a prosecutor.
  - I have tried cases ranging from murders—including one case where the death penalty was sought—to rapes, child abuse, DWI's and shoplifting.
  - I have prosecuted cases in the juvenile, district and superior courts and argued appeals before the State Court of Appeals and the State Supreme Court.
  - I have 21 1/2 years of administrative experience and management as a commissioned officer with the Naval Reserve.

**VOTE NOVEMBER 8.**

Paid for by The Bumford For Prosecutor Committee • 5210 Scott Rd. NW • Olympia, WA 98502

# Bikers gather to assert their rights at the Capitol



A supporter signs her name to Bert Williams' banner which proclaims, "I work, I ride, I vote, Be very scared of me."

ABATE (American Bikers Aimed Toward Education) marched on the capitol last Sunday to protest upcoming legislative that they deem as "totalitarian enactments."

This march was a culmination of the Run to Vote effort that united riders throughout Washington to demonstrate to the legislature the power of motorcycle riders and reaffirm bikers rights. ABATE is an inclusive organization that supports a range of those not traditionally associated with cycling and promise to fight for "Freedom of the Road". They are a political organization that lobbies the legislature for protection of cyclist rights, like freedom to ride without helmets.

— text and photo by Carson Strege

## You can now enjoy the benefits of a relaxing massage on campus

by Lyn Iverson  
CPJ Intern

Are you stressed? Tense? Need something to rejuvenate that dilapidated thing you once called your brain? Well, for the cost of about two lattes (that you don't need anyway, you're already tense) you could have a ten-minute massage. Yes I said *massage*. Now, don't let your imaginations run away. There are no oils involved, no steam baths, and no women named Helga. Just ten of the most relaxing minutes you've had in a long time.

This little slice of heavenly bliss is brought to you by TESC's Wellness Program.

From 3-5pm on Wednesdays and Thursdays in the library lobby, staff of Teresa Scharff & Associates (licensed massage practitioners) will be available to smooth away every ounce of tension you may have.

Shiatsu massage is used, along with the sounds of a new age tape, to drain all signs of stress, aches, and strain from your poor mid-quarter bedeviled body and brain.

They set you down in a portable massage chair, ask you a few medical history questions, turn on the tape, and it's "Calgon, Take Me Away-Land." Ten minutes later, they wake you up, wipe your drool off the arm rest, and you're ready to deal with your little greener life again.

The cost is \$5 for ten minutes, \$8 for 15 minutes, \$12 for 20 minutes, or \$50 for a prepaid package of five 20 minute sessions. Look at it as a small sacrifice to retain your sanity and sense of humor, especially now that the rainy gray days are here with the mid-term blahs.

### Governance from cover

"It's a catch-22," he said, "we don't have sufficient overwhelming participation to convince them [the administration] and we don't have the resources to put toward membership campaigns."

Dante Salvatierra, the coordinator of the S&A Board, explains that ESA has not recently attempted to obtain funding.

"This year's board might be totally cooperative," Salvatierra said. "I do believe that there should be a form of student government."

Members are frustrated by the lack of student support. They feel that Evergreen students enjoy less freedom to determine their education than they did a few years ago.

This could be due to a lack of student power and participation in administrative decision making. Imani feels that Evergreen students should get involved with student governance.

"It's really meant to respect and reflect the learning philosophy of Evergreen," she said, in summing up the philosophy of the ESA.

Members hope that if student interest grows they will be able to obtain the funding they need to have ESA recognized.

Despite many obstacles, members remain enthusiastic and hopeful.

"These are good things that could happen and a lot could come from it," Imani said optimistically.

They continue to lobby for student support and to hold meetings concerning student governance each week. Every meeting is a planning session at which any student can contribute ideas or gain admittance to the Board of Directors. The next ESA meeting will be held on Nov. 2, at 3 pm in the S&A lounge.

# CONFLICT RESOLUTION

MEDIATION IS MORE THAN THE MIDDLE ROAD

## CONFLICT RESOLUTION TRAINING

LEARN THE BASIC PRINCIPALS AND STRATEGIES OF MEDIATION

CAN WE GET ALONG IF WE DON'T AGREE?

### THURSDAY OCTOBER 27

### 5 TO 6:30 PM IN CAB 315

LYNN STOCKWELL, COORDINATOR FOR TESC CENTER FOR MEDIATION SERVICES, WILL FACILITATE DISCUSSION ON WAYS TO RESOLVE CONFLICT, WITH SPECIAL ATTENTION GIVEN TO MEDIATION TECHNIQUES THROUGH A DYNAMIC INTERACTIVE PRESENTATION.

**Looking for convenient MAILBOX SERVICE WITH A STREET ADDRESS?**

With mail service from MBE you get 24-hr. access, parcel receiving, shipping, call-in mail check, mail forwarding, copies, fax, and so much more!

**MBE MAIL BOXES ETC.**

1001 Cooper Point Road SW #140 (across from Toys R Us) Olympia, WA 98502 705-2636 Mon-Fri 9-6 Sat 10-2

**The Giggling Goose**

SPORTS BAR & EATERY

• Darts • Pool • 4 TV's

Full bar food sports friendly good times

Pounder Special 1/2 lb. burger, 1 lb. of fries, pint of beer \$3.99

Halloween Contest October 29th IN FRONT OF WESTSIDE LANES BOWLING ALLEY 2010 W. Harrison (206) 943-6229

**CLANCY'S**

COLUMBIA STREET PUBLIC HOUSE

Great Food! Great Atmosphere!

Live music almost every night of the week without a cover charge!

Mon-Fri 4-6pm **943-5575** 4th Ave. at Columbia

"Fuck the Constitution"

This poem is the result of my Political Economy and Social Change seminar in which people didn't hear me. The result of the American dream, shattered in my face. The result of an almost all white class completely ignorant to the fact that they have suppressed people of color in this country. A result of the denial of colored folks. You must remember that as you sit here living your lives, I sit here as a woman, a colored woman, I cannot deny what I am and I cannot turn my back on this. I will always be black, society sees it no other way. Please don't try and argue... you just don't understand.

You sit in this circle of amazement, awing the Constitution, the unifier of our people, of our country. Amazement!

You are esteemed, loving this Constitution, this capital that we Americans have created. But among all of your smiles, and haughty vanities Among all of "these" historical names, numbers and places you somehow seem to fit yourselves from my screams that turn into silence, from that Constitution you are so amazed with.

A Constitution which stole land, never given to you, never bought just taken.

So I sit here realizing that my brownness...slightly slanted eyes...frazzled hair is all yours.

I was considered your property, YOUR RIGHT.

But here you stand, 200 odd years later, with your hands in your fucking pockets, still gawking over a stupid fucking document which only included me as a criminal or property.

You sit here smiling.

Smiling for what? that your people's Constitution put so much trust or rather control,

so much whip into my back that I allowed it to control me.

That I finally broke down and allowed myself to serve it, to follow and abide by the Constitution.

And all I can think,

is that after all was written in this Constitution of yours, the only good thing stated,

included,

was the possibility for ratification...

this allowed us, the "inhuman, invisible monsters: to come up, to reeducate ourselves and beat the system.

Dred Scott, Fredrick Douglas they helped to slowly de-monstratize us colored folks and include us as "we the people," "the citizens."

They helped us to slowly loosen the noose around our necks, to breathe and perhaps live a slightly attainable life.

So all you folks surround me,

PLEASE stop saying "we",

stop saying "our":

fucking

"individual rights... property rights,"

GET REAL!

You never included me.

Fuck the Constitution,

it ain't nothing but a controlling, domineering,

Capitalistic dream meant for the white social class,

You won!

And 200 years later that Constitution

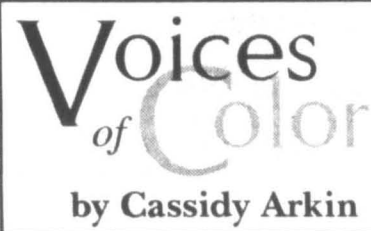
is still controlling colored folks

The noose is still tied

and my screams are still being silenced,

you can't hear them, you will never hear them!

You can't, you just smile.



Northern Gosland: Hell on Wings

Picture a mature conifer forest. A steller's jay flies frantically through branches as it is pursued by a larger bird. Soon the hawk has hit the jay and brought it to a downed log. It stands above the jay, wings lowered to hide its prey from other predators, and its scarlet eyes glare in contrast to its silver-blue feathers.

This is the northern goshawk, an extremely powerful hawk that dwells in the forest. Like the much talked about northern spotted owl, the goshawk depends primarily on mature/old growth woods that provide shade, seclusion and abundant airspace for flying under the canopy. Goshawks hunt these forests and adjacent clearings/meadows for the many birds and small mammals that make up their diet.

The nesting season begins early in the spring with courtship flights, where a pair will chase one another and nest building (or the sprucing up of old nests with new twigs). Goshawks are solitary birds in the fall and winter and don't breed until their third year

Northern goshawks are native to North America as well as northern Europe. In the eastern U.S., the goshawk is beginning to recover as the forests that had been devastated over a century ago are coming back into mature form, meeting their habitat requirements. This is good news. But in the western U.S., large-scale logging operations have severely reduced the amount of mature forest that the goshawks depend on for nesting. It is now listed

as a "sensitive" species on public lands (Forest Service, Bureau of Land Management, etc.). One subspecies, the Queen Charlotte Goshawk, that lives along the British Columbian and southern Alaskan coasts, has come under intense pressure of late due to extensive logging in both of these areas. Their population is believed to be in sharp decline and many environmental groups have recently petitioned the federal government to list the Queen Charlotte Goshawk as an endangered species. As long as the Endangered Species Act remains strong after this next reauthorization session, this move would grant the bird much needed protection from habitat destruction.

The goshawk is regarded by many bird and wildlife lovers as a fierce and beautiful bird. The large female is an aggressive defender of the nest area and will dive at and even strike intruders, including humans! Goshawks have relatively short, rounded wings that enable them to fit through tight places and a long tail that acts as a rudder as they weave between branches in their flight. They have powerful talons (claws) and are able to kill prey up to 4x their weight, including snowshoe hare, pheasant and grouse.

As it stands now, the future of the goshawk is unstable; especially if our forests continue to be gobbled up by the money-hungry corporations and the Canadian and U.S. governments that cater to them. Goshawks and the other beings that inhabit mature forest ecosystems do not deserve this fate



**Mama Miles**  
Bike • Bus • Walk • Carpool  
Be "Powered By Pizza" and Save 10%  
*Mamas*  
120 N. Pear • 943-9849

A Doctor's office like none other.

Steven Bratman M.D. - Holistic Medicine

- Treatment options for the WHOLE person  
Including: Conventional Medical Diagnosis and Treatment expanded to include Non-drug treatments such as Acupuncture, Exercise, and Diet.
- Plenty of time for 2-way Communication  
Visit are for at least one/half hour. I'm not the boss - you are. I'm the consultant.
- No waiting!!  
Visits start promptly on schedule. Because I have been a patient, I respect your time.



Steven Bratman M.D.  
- Holistic Medicine  
6326 Martin Way E., Lacey  
491-2111

Take the whole family to the Washtub Laundromat!



Come visit the Washtub Laundromat. And while you're there, you might as well do your laundry. After all, we're the only self-service laundromat on the westside!

We also feature drop-off/dry cleaning. And "down" sleeping bags? No problem!

Located on 2103 Harrison Ave, across from the new Value Village...943-9714.

Finally...a reason to wash your clothes!

Columbus day upsets author's stomach

by Shigo Rodasao

CPI Contributor

Picture this:

It's Monday morning. I'm hungry, broke and I have no ATM card. I need to get to "my bank" and get some green papers to exchange for stuff. You know, just the way it used to be in the old days...

I head to town expecting to have a mellow day. I don't have classes today. I know what I feel like eating and I have a pretty good idea where to get it. Anyway, I arrived into town. I walk to "my bank" and the place is closed! What's the \$#@? A flyer says, "today is Columbus day and we are closed. I'm not a happy camper %\$#\*..."

Luckily, I see someone I know and I borrowed some greens so I could eat. I go to the eating establishment and walk in. I found a quiet spot. Left on the table was today's "news paper" and one of those green papers with a good number on it! That's a good deal. I don't have to buy the "paper" and I can choose between pocketing the green or leaving it there. I feel a sense of control...

I picked the "news paper" and started reading. Front page headline: "U.S. presence in the Middle East." Again! Same page. "something the CIA did in Korea in the '50s and in the '60s". This is what I call

Forum

your typical news. Just what we read everyday, I say.

The waitress comes and she can read my mind! She is walking my way with a cup of coffee in one hand, cream in the other and a beautiful smile that could solve the problems of the world. She greets me and asks what do I want. I tell her what I'm craving. So far so good, I'm thinking (the night before I was dreaming about food). I was about to start salivating when she says, "I'm sorry, we don't serve that today. We have a special Columbus Day menu"! A freezing feeling struck me so deeply that even my bones felt it. An ancient memory revealed its presence. All my good attitude and sarcasm turned into pain and anger. It felt like being hit by lightning. This is not happening, I thought.

I tried to be cool about it and replied in a surprised way. "Is that right?"

"Yes, everybody forgets poor Mr. Columbus," she said. Short of a sarcastic answer I decided to check out the "special menu" and replied, I need more time. I composed myself and reflected about what was going on. First, the bank is closed and

I have no access to "my greens" because of Columbus. The restaurant will not serve me what I want because of Columbus. This is unreal! The guy discovered nothing. He invaded, destroyed and stole from my ancestors and we have a holiday for that?

The waitress came back to fill my half-empty or half-full cup; while I pretended to be deciding what to eat. My craving was gone. I couldn't eat. I put my things away and proceeded to leave without touching the steaming fresh brewed coffee she'd served me.

Perhaps she wasn't aware that her words pierced my consciousness so deeply that the memory of my ancestors being massacred and brutally invaded became present in my mind.

The picture doesn't make sense when businesses go out of their way to perpetuate lies just to profit or take the day off because it is a "national holiday." What a sad joke! In that case, why not have a Hitler's day? That would be the same. Wouldn't it? Are those things done out of ignorance or do people really believe the lies out there? Also, Can you think why have those lies kept alive? For what purpose? Can you think of any reasons?

November 1994

Diversity Events & Activities

- 2 Wednesday  
**Uakti Brazilian Music Ensemble**  
Recital Hall, 8 p.m.  
Uakti fuse jazz and Brazilian sounds using one-of-a-kind and traditional instruments.  
General admission is \$10, KAOS subscribers/students/seniors pay \$6, Evergreen students pay \$3; call Evergreen Expressions at ext. 6833.
- 4 Friday  
**Human Rights in Indonesia**  
CAB 110, 7-8:30 p.m.  
A speaker from Amnesty International will address this topic.  
Free; call Amnesty International at ext. 6098.
- 9 Wednesday  
**Contemporary Gender Issues on Campus Teleconference**  
Location TBA, 10:30 a.m.  
Join a panel of professionals from campuses across the nation and the Catalyst Theatre Company to discuss gender relationships on campus. Among the issues to be discussed: interracial dating, sexual orientation, respect for gender differences, homophobia, and faculty/student relationships.  
Free; call the President's Office, ext. 6103.
- 11 Friday  
**Romanovsky & Phillips**  
L2000, 8 p.m.  
Sassy, folk-inspired humor that celebrates gay life and appeals to all sexual orientations.  
General admission \$12, students \$8; call 5 & A, ext. 6220.
- 16 Wednesday  
**Obo Addy And Okropong Music and Dance of Ghana**  
Recital Hall, 8 p.m.  
Heart pounding music and energetic dance serve as trademarks of this African group.  
General admission is \$10, KAOS subscribers/students/seniors pay \$6, Evergreen students pay \$3; call Evergreen Expressions at ext. 6833.
- 29 Tuesday  
**Cafe Verde Coffeehouse Features Obrador**  
CAB Building, 7 p.m.  
This local sextet specializes in lively Latin and jazz creations.  
Free; call 5 & A, ext. 6220.

Next publication date:  
Monday January 2, 1995  
Deadline: Thursday, December 22, 1994



No activities submitted for December 1994.



The Third Floor Info is a space to let people know what's up in the Student Activities area of the CAB.

On Thursday, Oct. 27, LASO presents a Flamenco dance, featuring Oscar Nieto and Mozaico Flamenco at 8 pm at the Recital Hall. Tickets are \$8 and \$5 (students).

The Peace Center and the Environmental Resource Center are bringing an Evergreen Delegation to the Northwest Forest Resource Conference in Sandy, Oregon. \$10 covers the entire cost of the weekend, beginning Friday, Oct. 28. Agenda includes a field trip to Eagle Creek on Sunday. For information, call x6098 or x6784.

Sunday, Oct. 30, Dia de los Muertos, a procession and art expo, featuring Mexicana/Mexicano art, takes place at Red Square from 6 - 8 pm. Thanks to the folks at LASO for this one.

Midscreen's three films on Monday, Oct. 31, are sure to get your ghost: Island of Lost Souls at 7 pm, Dead of Night at 8:30 pm, and Horror Express at 10:30 pm. These flicks may be viewed for free at Lecture Hall 1.

Meeting on Thursday, Oct. 27 to plan new student group Evergreen Pagan Circle in LIB 1600 at 6:30 pm. Call Karen at 866-4302 for info.

Learn about life and politics in Guatemala on Tuesday, EPIC and LASO work with NISGUA to bring Guatemalan speaker Vicente Ramirez. Speech, question and answers on Tuesday, Nov. 1, in the Library Lobby at noon.

Like to write and get published? Slightly West is an annual, student-produced publication highlighting creative expression from the Evergreen Community. Submission deadline for this year is Friday, Nov. 4 for poetry and prose and Monday, Nov. 21 for art and photography. For information call x6879.

Animas Trading Co.  
IMPORTS FROM AROUND THE WORLD.  
Wool sweaters, bedspreads, incense, patches, hemp stuff and more.  
Great selection of Grateful Dead and Phish stuff.  
202 W. 4th Avenue  
Olympia, WA 98501 357-7004

KUNDALINI ESPRESSO  
Featuring organic coffee from Equal Exchange.  
Located at 407 E. 4th Ave. in front of Olympic Outfitters.  
705-3927  
Best Prices in Town

To add an activity or event to this list, please fill out a Diversity Events form from L3103 or L3114. Send completed forms to L3122 or drop off at Library 3114. Call ext. 6568 with questions.





## Hellcatz lose to Spokane

The Evergreen Hellcatz Women's Rugby Team faced off against Spokane Women's Clubside on Evergreen turf Saturday. Evergreen was outscored four tries and a conversion kick to nothing and the game was especially gruelling. The Spokane team had a productive back line which moved the ball well. Evergreen had some problems matching them defensively, but the Hellcatz had some bruising tackles in open field play and supported each other well.

The Hellcatz' forwards had powerful scrums, and won almost all the line-outs, which is exceptional, including some awarded to Spokane. Under the strong coaching of Anita Melin, the Hellcatz are becoming more formidable each week.

The Hellcatz are scheduled to play two more home games this quarter: Nov. 5 and Nov. 12. If you want to see Evergreen Women's Rugby in action, come watch us on field two! And for more wild and crazy excitement... **JELLO WRESTLING** at Thekla on Nov. 10, starring the Hellcatz. The cost of admission is \$5 at the door, with proceeds benefiting the team.

—by Julie Muretta

## Why don't you watch?

### A spectator's view

An Evergreen soccer player kicked a ball straight toward my head during Saturday's game against Western. I loved it.

I'm not a very athletic person. The extent of my sports career was shooting hoops with my dad in the backyard. We'd play 21, and generally he'd let me win.

Being assigned to take pictures of men's soccer was just another photo assignment at first—a chance for me to practice photography for the newspaper.

Never having taken sports pictures before, I didn't quite know where to start. I wandered around the field looking for the perfect shot. I stationed myself next to Western's goal.

The goalie screamed and jumped around a lot. "Get it out of here! Get it out of here!" he would yell everytime the ball got in his half of the field. It was quite amusing. He appeared to be a very stress-filled individual.

I watched the game through my telephoto lens, a cinemascopie movie filled from edge-to-edge with adventure. Soccer isn't boring. Sports don't suck.

Evergreen scored their first of two goals while I was reloading film. I was pissed that I didn't get the scoring shot, but I was psyched for the point.

The game had become more than just an assignment. Through the process of watching the game I was transformed into something I didn't know existed—a fan of the fighting geoducks.

Evergreen went on to win the game, 2-1, furthering their chances of being play-off contenders. The game was exciting and well played.

Sports at Evergreen are often ignored and I've managed to do so for the past three years. If you give them a chance, though, even if by accident, you'll find they hold a lot of fun for your Saturday afternoons.

—Pat Castaldo

## Another victory for men's soccer



Photo by Pat Castaldo

Evergreen's men's soccer team tops WWU in a 2-1 victory last Saturday.

Moving one step closer to the upcoming conference play-offs, the Evergreen men's soccer team beat the Western Washington University Vikings 2-1 last Saturday, Oct. 22.

Despite the Vikings' best defensive efforts, Evergreen took the lead 1-0 in the first half when Sean Huff scored off a header. Midway through the second half, Western tied the score at 1-1 on a goal from Peter Deed. Minutes later, Evergreen responded with a goal from John Hall to seal the victory.

The Geoducks boast an impressive 10-7 record for the season. According to the coach, with only two returning seniors, Hall and Andy Klubberud, and six starting freshmen, the young team has impressed both fans and opponents alike. "The team kind of sucked last year, but boy are they doing well now," remarked one spectator, "their games are really fun to watch."

Coach Arno Zoske credits their success with quick thinking: "Soccer is like a giant chess game where 20 people are making moves all at once. We only have seconds to evaluate the situation and make a good decision!"

Reflecting on Saturday's win, freshman defensive power-house David Zumwalt stated, "It was an important game that we knew we had to win to go to play-offs. We played hard and triumphed magnificent."

—by Rebecca Pellman

## Weekend upset for men's rugby

Last Saturday the men's rugby team traveled to Walla Walla only to be disappointed by an incompetent referee and inhospitable Whitman hosts. Both teams were confident in their ability to score as they took the pitch. Whitman surprised Evergreen in the first few minutes of the match by scoring a try and a conversion. Evergreen quickly responded by running a "weak" play on a give and go between the scrumhalf Moine Riley and flyhalf Ted Hart ending in a score by Chris Haslet in the corner. Moine Riley also scored later in the game and Darren Armin worked with Evergreen's dominate pack to score twice. As the scoring continued to go back and forth Evergreen was able to keep the momentum the majority of the match.

Evergreen held a three point lead with ten minutes left in the game but unfortunately Whitman managed a few breakaways and scored two more times to end it 30-22. What frustrated Evergreen more than Whitman's speedy backs was the referee's inability to enforce the rules. Countless times Whitman players would jump off sides spoiling Evergreen's attempts to win ball. Fortunately Evergreen will appeal to the league and count the game as a draw because there was not an official referee to call the game. This Saturday the men's team plays host to Lewis and Clark on the main fields.

—by Ted Hart

## SPORTS TALK

### A quick rating of local teams:

**Sonics:** UP- The regions only true sports bright spot, and the only undefeated team in the preseason, 5-0. A word of caution though, don't count your championships before there won.

**Seahawks:** DOWN- The once 2-0 Hawks are now 3-4, after losing 4 of their last 5 games. The slide may have no immediate end in sight since their next game is against the 6-1 Chargers in San Diego.

**Husky football:** DOWN- Kenny Wheaton's 97 yard T.D. run, enough said.  
**Cougar football:** middle of the road- After holding on to beat ASU, the best defense in the land is still held captive by two losses.

**Mariners:** WAY DOWN!- Ken Griffey who?

—By Kristopher Brannon

**HARBINGER INN** Bed & Breakfast

Charming 1910 Mansion  
Overlooking the Puget Sound & the Olympic Mountains.

1136 East Bay Dr. Olympia, WA 98506 • 754-0389

a place to hang out

**SAN FRANCISCO STREET BAKERY**

1520 san francisco NE  
753-8553

**SAT OCT 29**  
pumpkins 'n' pograms, yeoow!

**Halloween Costume Ball!**

dancin' grooves by d.j. Bruce  
doors open at 8pm  
\$2 with costume  
\$3 without  
(come in costume, O.K.?)  
spirited decor by Spectrum Assn.

Happy Hour 6-8 daily!

Hip-Hop & Soul w/DJ Kwai FREE!

More, More, More! w/DJ d'Jones \$1

A2Z w/M.C. Queen Lucky \$2

Dancing d-lite w/DJ Bruce \$2

Fun w/DJ Karl Steel FREE!

**Thekla**

open 6pm-2am daily  
116 E. 5th • Olympia  
352-8835



## Angels arrive in Seattle

by Laurel Rosen

### Theater Review

By confronting a wide variety of personal and political issues and presenting them in a humorous, yet touching form, Tony Kushner offers powerful and important, if extreme, messages about the fate of humanity in the coming years in his play *Angels in America*.

However, the acting in the performance by Seattle's Intiman Theatre Company and direction by Warner Shook was not as consistently excellent as the engaging dialogue or the sophisticated plot.

Nonetheless, *Angels in America: A Gay Fantasia on National Themes, Part One: Millennium Approaches* addresses volatile conflicts of modern life which will expand the thoughts of any viewer.

From ideas as individual as self-hatred, group identification, and the re-examination of parent-child relationships, to those as universal as love, life, death, and fear of the future, Kushner's play offers something provocative for everyone.

*Angels in America* tells the stories of a diverse group of New Yorkers who struggle with religion, ethnic identity, mental breakdown, sexuality, and AIDS.

At the root of all of this strife, the message is clear: We must change our ways now if we are to live happily and healthfully into the next millennium.

Laurence Ballard was the highlight of the show with his stellar performance as Roy Cohn, a wheeling-and-dealing, fast-talking, power-tripping smart-aleck who denies both

his homosexuality and his affliction with AIDS. His acting was strong and convincing; Ballard brought a zest to his hatefully charming character.

Unfortunately, the entire cast was not quite as mesmerizing in their roles as Ballard was in his. Jeanne Paulsen played a variety of characters, both male and female, with varying degrees of success.

As Hannah Pitt, a concerned mother, and Ethel Rosenberg, a ghost from the past, Paulsen displayed her ability to act persuasively and with skill.

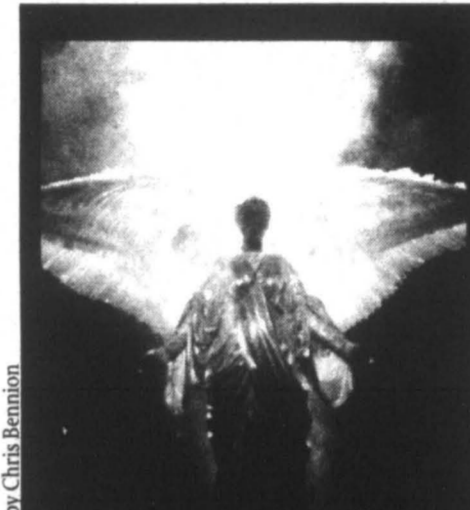
However, in her roles as a man, Paulsen's performance was distracting and entirely unbelievable, weakening an otherwise phenomenal scene in Act One.

While the acting was at times lacking, *Angels in America* succeeds in making a statement through various other means.

The sleek sets add to the surreal futuristic feeling of the play, while the relatively small theater provides intimate interaction between the events on stage and the reactions in the audience, strengthening the message of an impending apocalypse.

*Angels in America* has won several awards, including the 1993 Tony Award for Best Play. While the story-line focuses on issues which seem especially pertinent in America, the play has been performed in foreign languages in 18 different countries in Europe, Latin America, Asia and the Middle East.

*Angels in America, Part One: Millennium Approaches* runs at the Intiman



The Angel (Robynn Rodriguez) descends in the climactic scene of *Angels in America, part one: Millennium Approaches*

Theatre through November 20. Tickets cost from \$16 to \$34 and are available through the Intiman Box Office at (206) 626-0782 or Ticketmaster at (206) 292-ARTS. Half-price tickets are available for students at the Box Office on the day of the show. *Part Two: Perestroika*, which won the 1994 Tony Award for Best Play, opens at the Intiman in Spring 1995.

Laurel is quite an angel herself.

## Women can travel alone!

by Mason McGraw

Last Thursday night Thalia Zepotos made a special appearance at the Four Seasons Books at Carnegie's. She is the author of *Adventures in Good Company* and *A Journey of One's Own* and she just finished her latest novel about women's involvement in politics.

Through her independent travels to foreign countries, Zepotos has inspired several women to take trips out into the world. There are several all women groups such as the all women's rv park in Arizona and the all women cattle drive in Montana. One woman stated: "After I climbed a 40 foot rock face, I can divorce my husband."

Zepotos talked about the essentials in foreign travel. She would always bring three bottoms, two tops, one sweater, two skirts and one pair of pants. She suggested a good pair of walking sandals, earplugs, a credit card and water purification tablets.

While spending an average of four months a year traveling around the world independently, she has noticed that a lot of men think that if you are

see Women on page 13

## EVERGREEN EXPRESSIONS

The Evergreen State College

### Uakti Brazilian Music Ensemble

November 2, 1994, 8 p.m. - Recital Hall  
General admission: \$10  
KAOS subscribers, students, senior citizens: \$6  
Evergreen students: \$3



### UMO Ensemble: "El Dorado"

November 4, 1994, 8 p.m. - Experimental Theatre  
General admission: \$10  
KAOS subscribers, students, senior citizens: \$6  
Evergreen students: \$3

Tickets available at The Evergreen State College Bookstore, Rainy Day Records, Yenny's, The Bookmark and at the door. For information call 866-6833.

## A GREAT PLACE TO STUDY, EAT AND HAVE FUN.

### AVE 4<sup>th</sup> TAV

The Fourth Avenue Tavern offers you a great place to study, where you can drink beer and eat pizza. We've also got pool tables, games, a food bar, and specials for students.

You can check out bands every weekend, acoustic open mic Sundays with the Olympia Live Music Society, and Alternative music on Wednesday nights.

MICROBREWS, IMPORTS AND DOMESTICS ON DRAUGHT  
786-1444 210 E. 4th Ave

# We will always have Paris

by Naomi Ishisaka

It's funny that on a campus which claims to be open-minded, inclusive and involved in the fight against social injustice, there is such a general dislike of rap music.

Regardless of its recent multitude of incarnations, rap began as a way for urban black youth to express their anger and frustration about a racist, classist and degrading society.

As in any genre of music, there has been much growth and change in rap. There is gangsta, but there is funk-influenced rap, jazz-influenced rap, a plethora of successful women rappers, mini-rappers (Kriss Kross) and just about every other group under the sun trying to make it as rappers.

Throughout rap's life, despite attempts by people of all colors to paint rap as a monolithic entity and a menace to society, it continues to express anger about a racist, classist and degrading society.

Which brings me to Paris.

When Paris found his way into the CPJ's mail amid press releases and other assorted boring crap I was very excited.

In the latest VIBE magazine there was a review of sorts of his new album *Guerrilla Funk*, calling Paris the "black panther of hip-hop." Over the years, Paris had become a kind of legend for being dropped from Tommy Boy Records and refusing promotion by other labels in order to preserve the political content of his music and the cover of his first album *Sleeping with*

*the Enemy*. The cover depicted Paris with a gun ready to shoot a smiling, waving, George Bush for his economic policies affecting the underclass.

Finally, he signed with Priority Records and started his own label, Scarface. He began rapping while at UC Davis getting his economics degree. He started because of his desire to merge social commentary and rap. He doesn't fall short of his mission.

Looking at the liner notes you can tell where he's coming from. His main concerns:

- 1) Revolution
- 2) Questioning authority
- 3) Educating yourself and others
- 4) The state of the black community

So with the exception of the last point, these are things the average Greener would be interested in or sympathetic to, yet when the idea of playing this man's music is brought up, all I hear is a collective groan.

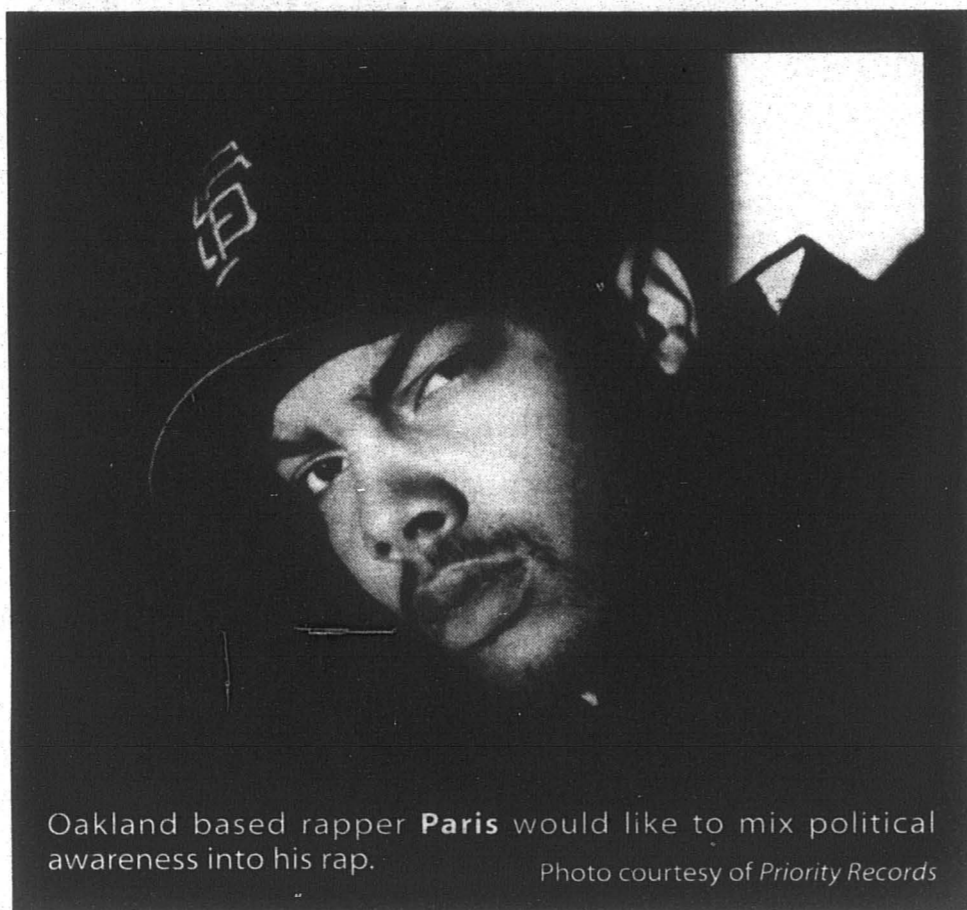
How can we say we're not racist and privileged when we reject an easy, important, first step into understanding another group's culture?

It's arguable of course, but I think that even in a highly subjective medium like music, you can choose to listen to groups you may know little or nothing about. This could enhance your understanding of other cultural arenas.

Saying, "I just don't like that kind of music," is a cop out. Have you tried to like it? Do all your friends hate it too?

But about the album... it was great. The

**Paris**  
**Guerrilla Funk**  
Priority Records



Oakland based rapper Paris would like to mix political awareness into his rap.

Photo courtesy of Priority Records

album title however, is totally misleading. "Funk" seems to be a pretty loose term these days and certainly is here. There is only one track, *Guerrilla Funk (Deep Fo' Real mix)*, that remotely resembles funk. If you aren't a big fan o' funk, the other tracks will make up for it.

The lyrics are highly political, talking about urban life, violence in the inner city and the need for education and revolution. The music is tight, well constructed and shows off Paris' producing and mixing

ability. My favorite track on *Guerrilla Funk* was "Outta my Life." It is a lethargic, mellow cut that owes a lot to its R&B sample but works well with Paris' rapping.

If you don't think you like rap, try this album. It's political, musical and a good intro to the kind of positive messages you can find in the very diverse rap industry of today.

Naomi is the editor in chief of the Cooper Point Journal.

**ELECTRIC ROSE TATTOO**  
115 N. CAPITOL WAY  
206-786-8282  
OLYMPIA, WA 98501

**Batdorf & Bronson**  
ROASTERS

Look for us at the Deli and at the Espresso Cart in front of the Library.

Olympia's Home Town Coffee Roasters

786-6717

513 CAPITOL WAY

# TESC hosts acclaimed jazz composer Wayne Horvitz

by Robert M Keefe

Their tongues' ticking legato over pauses-twothreeone twothreeone twothreeone was an incessant undercurrent to Thursday's performance by Wayne Horvitz and the New York Composers Orchestra (NYCO) West. Like Glenn Gould humming, all members of the orchestra (comprised of bass, drums, piano, and 10-piece horn section) infected the habit of counting between notes in the measure. (Though the effect was affected visually and not aurally.) This recitative: the evening's counterpoint. A dozen parishioners chanting prayers over the ledger's rosary.

Religious flights of ecstasy were not out of place for the full house crowd in the recital hall at TESC in this season's second successful event sponsored by Evergreen Expressions.

Though the Roman Catholic Church is reluctant over leadership by women clergy, Robin Holcomb shared with Wayne Horvitz roles of piano playing and conducting (more than half the pieces). The program opened with the first of her two compositions presented, "First Program in Standard

Time." She led the 12 deftly through this pastoral piece.

Holcomb and Horvitz created the NYCO project in 1986 to provide, as the name implies, an orchestra for composers. Their duality in co-direction is mirrored in the bicoastal nature of the ensemble (a New York City based recording and performing unit and, through collaboration with Rob Blakeslee and the Pacific Rim Ensemble, a west coast performing unit).

The band eased without fanfare into three-tiered rows like stagehands, not dressed to the nines but as if ready for an evening at the 4th Ave Tav. This dualism in presentation-is it a chamber orchestra or jazz ensemble?-perhaps confused the audience at first, responding with polite applause for the first few pieces.

It wasn't until Greg Powers exhaled the burn of his throat to slide fire into his trombone solo during "Fever," that the audience applauded with reveling abandon. The heat rose to a point of loosening viscosity that lasted through the evening.

The orchestration allowed all the performers many chances at solos (except for Cyndy Jefferson's French horn). Most

notable were Skerik blowing the baritone and tenor saxes in a manner as whimsical as the purple shoes he wore and Craig Flory's clarinet magic during the Bill Frisell composition, "Jimmy Carter/Where in the World." He produced sounds never heard in a chamber orchestra, nor thought possible.

But it was the overall collaboration, the continuous pump of valves fueling the Dr. Seussian mechanical creation-triple sling jigger, utterly sputter, bitsy big boy boomeroo-that the orchestra became the modern Prometheus, that freakish Frankenstein.

Ah, it was a thing of beauty. Horvitz, decked totally cas', saved his sparks for the final pieces of each of the two sets: "Prodigal Son Revisited" and "Don't Stop Know." Both were driving up tempo numbers.

By the evidence of this night, Horvitz has certainly found a perfect ensemble for his talents. One could say the NYCO is more "conservative" than the work he did in President and Pigpen; but it is a conservatism that allows formal constraints to orchestration, without dressing the part. His ensemble can tick their

tongues in perfect beat as long as we keep tapping our toes.

Rob would like to thank Julie at the Olympia Timberland Library for her research of Dr. Seuss machines. And for doing it all with a straight face.

## Women, from page 13

traveling without a man you are looking for one. She would get a lot of constant beckoning and following. This would cause a lot of women to feel unsafe when they first started traveling out into the world. But, she says the most sexual harassment occurs in Western Europe and not very much at all in other parts of the world.

Traveling around the world can provide fun and exciting new experiences. Everyone should get out there and see the real world. Zepotos said it best: "If I could say a final word, GO." Mason is the office dynamo.

Faster, Better, More-Relevant-Scopes

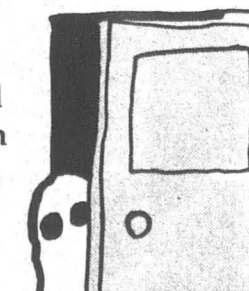
**Aries**-Piddling prayers. **Taurus**-Squandering sobriety. **Gemini**-Fluorescent fantasies. **Cancer**-Irrational Irony. **Virgo**-Practical pseudomorph. **Libra**-Xenobiotic Happiness. **Scorpio**-Supernatural superego. **Sagittarius**-Civil clamor. **Capricorn**-Mythical muck. **Aquarius**-Astute admiration. **Pisces**-Quantitative quivers -Pat Castaldo

**FIVE CORNERS**  
Candles, Herbs, Oils, Incense, Athames, Brooms, Music, Books, Jewelry, and More...  
11 am - 6 pm Mon. thru Sat.  
608 S. Columbia • 352-4349

**GOING PLACES**  
Be an Informed Traveller!  
Books • Maps • Gifts • Foreign Language Resources • Outdoor Recreation • Travel Accessories  
515 S. Washington, Olympia, WA 98501  
(206)357-6860

## Treat your tricksters well

with naturally sweetened treats from the Co-op.

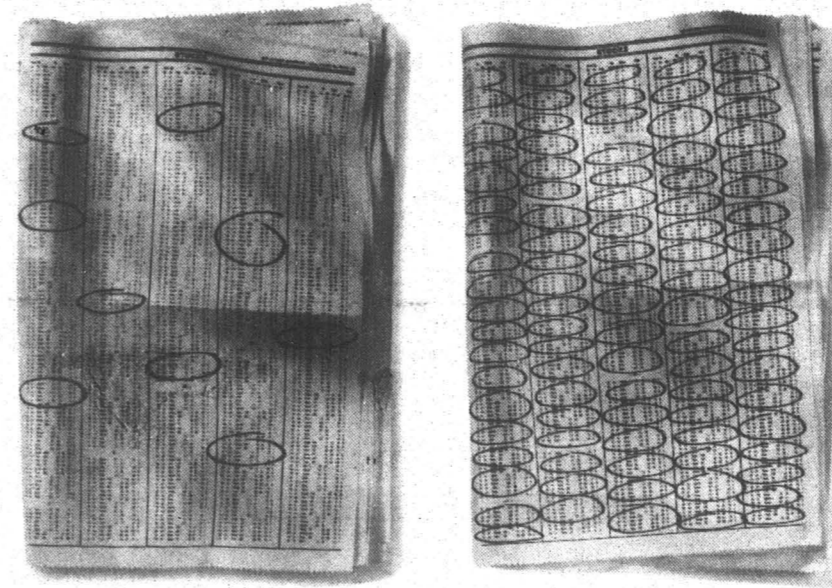


**Olympia Food Co-op**

921 N. Rogers  
954-7666  
9am-8pm

3111 Pacific  
956-3870  
9am-9pm

## ANNOUNCING TWO NEW CREF ACCOUNTS



**YOU'RE LOOKING AT TWO COMPLETELY OPPOSITE, FUNDAMENTALLY DIFFERENT WAYS TO INVEST IN STOCKS. WE RECOMMEND BOTH.**

Introducing the CREF Growth Account and the CREF Equity Index Account.

Whether you want a fund that selects specific stocks or one that covers the market, we're on the same page. Our new CREF Growth and CREF Equity Index Accounts use two distinct strategies for investing in the stock market, but both aim to provide what every smart investor looks for: long-term growth that outpaces inflation.\*

The CREF Growth Account searches for individual companies that are poised for superior growth. In contrast, the Equity Index Account looks for more diversification, with a portfolio encompassing almost the entire range of U.S. stock investments. It will invest in stocks

in the Russell 3000\*\* a broad index of U.S. stocks.

Like our CREF Stock Account, which combines active, indexed, and foreign investing, and our Global Equities Account, which actively seeks opportunities worldwide, the new funds are managed by experienced investment professionals. They're the same experts who have helped make TIAA-CREF the largest pension system in the U.S., managing over \$130 billion in assets.

To find out more about our new stock funds, and building your portfolio with TIAA-CREF, just call 1 800-842-2776. And take your pick.

**TIAA CREF** Ensuring the future for those who shape it.™

\*The new funds are available for Retirement Annuities subject to the terms of your institution's plan. They are available for all Supplemental Retirement Annuities. \*\*The Russell 3000 is a registered trademark of the Frank Russell Company. Russell is not a sponsor of the CREF Equity Index Account and is not affiliated with it in any way. For more complete information, including charges and expenses, call 1 800-842-2776, ext. 6099 for a CREF prospectus. Read the prospectus carefully before you invest or send money. CREF certificates are distributed by TIAA-CREF Individual and Institutional Services, Inc.

**THURSDAY 27**

LASO presents Oscar Nieto and Mozaico Flamenco at 8 pm. Tickets are \$8.00 general admission.

The Olympia Chamber Orchestra and Harlequin Productions presents: Billy, an Opera in two acts. Octo. 28 and 29 at 8 pm.

CPJ Story Meeting in CAB 316, today, from 4 to 5:30 pm. When is the CPJ going to have good writing? The minute you walk through the door.

**FRIDAY 28**

Holiday Weekend Medieval camping party. Sponsored by SCA. For info: contact Melora x5108

Rocky Horror Picture Show at the Capitol Theatre. All seats \$5.

A challenge program (ropes) orientation meeting will be held in CAB 108. For info: contact Russell Chamberlain 438-6073 x935.

SCA sponsored MADRIGALS GROUP! Every Sunday at 4 pm in H-210

**SUNDAY 30**

The Olympia Chamber Orchestra and Harlequin Productions presents: Billy, an Opera in two acts. Today at 2 pm.

Celebrate Dia de los Muertos in Red Square from 6-8 pm. There will be a procession followed by an art exhibition and choreographed dances.

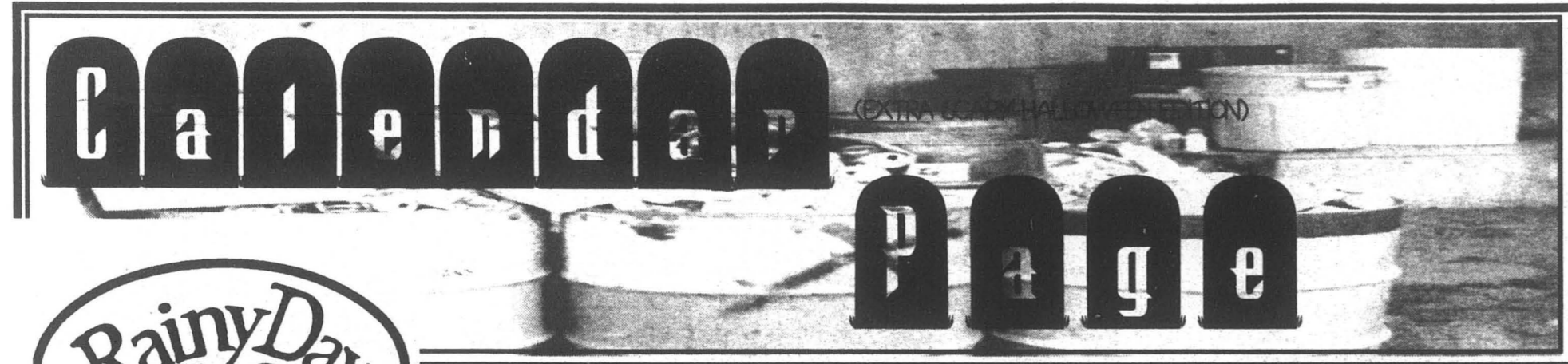
Nathan would like everyone to refer to Aimee Baldoz as Mimi Rondette. Everyone else will be referred to as Cruella.

**TUESDAY 1**

Evergreen Students for Christ meeting are held Tuesday nights. 7pm in Lib. 2510. Come check it out!

Habitat for humanity will be having their first meeting, Tuesday at 9pm in Lib 2510. Anyone interested is welcome. Speech and Question and Answer session with Guatemalan speaker Vicente Ramirez. Conducted in the Library Lobby at Noon. Sponsored by EPIC and LASO.

Everyone must come to Red Square and yell Cruella loudly.



**Rainy Day RECORDS**

FANTASTIC SELECTION OF RECORDS, TAPES, COMPACT DISCS & INDEPENDENT RELEASES

SPECIAL ORDERS WELCOME

WE BUY MOVIES FROM ANY STORE

**\$1.00 OFF** our regular low price on any NEW ALBUM, CASSETTE or CD in stock (\$6.98 List or Higher)

Expires November 9, 1994

357-4755 WESTSIDE CENTER DIVISION & HARRISON

**"Rejoice in the Lord"** - Psalm 33:1

*(Image of a man's face)*

**SATURDAY 29**

Native Olympian John Bellamy Foster will be signing copies of his new book, *The Vulnerable Planet, A short Economic History of the Environment*, Saturday October 29, 3-5pm at Orca Books 509 E. 4th Ave.

Dub Narcotic Sound System, Wrong Notes and Engine 54 at the Capitol Theater, 9 pm \$5 at the door.

The Abaddon: S&A Productions and the Camarilla present performance art and Gothic-Industrial Dance in the Library lobby. \$7 (general)/\$5 (student). Fetish gear gets \$1 off at the door.

**MONDAY 31**

This is Halloween. It is the day to dress up like something really scary and go door-to-door begging for candy.

Mindscreen presents Halloween Films: *Island of Lost Souls*, *Dead of Night*, *Horror Express*. Films start at 7 pm in Lecture Hall 1. Films are free an open to all.

To submit all information to the calendar page, put it in the box in the CPJ, CAB 316 by the Friday before the issue it should appear.

**WEDNESDAY 2**

The Slightly West poetry club, an informal, safe and fun environment in which to read works, favorite authors will meet every Wednesday at 9 pm in H-208. For more info: Atwater at 866-2796.

Evergreen Expressions brings you the Brazilian Music of UAKATI at the Recital Hall from 8-10 pm. Buy your tickets in advance at the Bookstore for \$3 (students) or \$6 (general) or pay \$10 door fee.

Come watch *The Bev* with the CPJ. You haven't seen *The Bev* until you've watched it with us. Third Floor of the CAB, tonight at 8 pm. You can't miss us.

**CPJ Classifieds**

Contact: Julie Crossland Phone 866-6000 x6054 or stop by the CPJ CAB 316, Olympia, WA 98505

<p><b>Classified Rates</b> 30 words or less: \$3.00 Student Rate: \$2.00 Business Rate: \$6.00 PRE-PAYMENT REQUIRED Classified Deadline 5 pm Mon</p>	<p><b>For Sale</b></p> <p><b>FOR SALE:</b> Digitech DSP.256 digital effects processor for guitar, bass, keyboards, voice, etc. Featuring delays, stereo chorus, reverb, comb filter, sweep, rotating speaker, flange, pipe organ, etc. Plug it straight into your amp, 4-track, or MIDI. \$175.00. call 352-0784, ask for Guido.</p>	<p><b>Lost and Found</b></p> <p>Got something for the C-Page? Check your pockets.</p>
<p><b>Help Wanted</b></p> <p>The world has had enough...of hunger, injustice, war. In answer to our need, the World Teacher known variously as the Messiah, Imam Mahdi, Krishna, Buddha, and Christ, is in the world in a physical body. The teacher comes as a modern person concerned with modern problems. Look fore a media interview with this said Teacher on a major US TV news network. 493-6620</p>	<p><b>Business Opportunities</b></p> <p>EARN TUITION? NATURALLY! OUTSTANDING ORGANIC INCOME OPPORTUNITY Earn a solid income quickly while working part-time assisting in the distribution of wild and organically grown products. A secure &amp; successful 11-year-old Oregon company. For friendly, professional information and assistance, call <b>Essential HealthStyles</b> 1-800-656-3280. We will call you back promptly.</p>	<p><b>Fundraising</b></p> <p>FAST FUNDRAISER—RAISE \$500 IN 5 DAYS—GROUPS, CLUBS, ORGANIZATIONS, MOTIVATED INDIVIDUALS. FAST, SIMPLE, EASY—NO FINANCIAL OBLIGATION (800)774-3851 EXT. 33</p>

**COMICS**

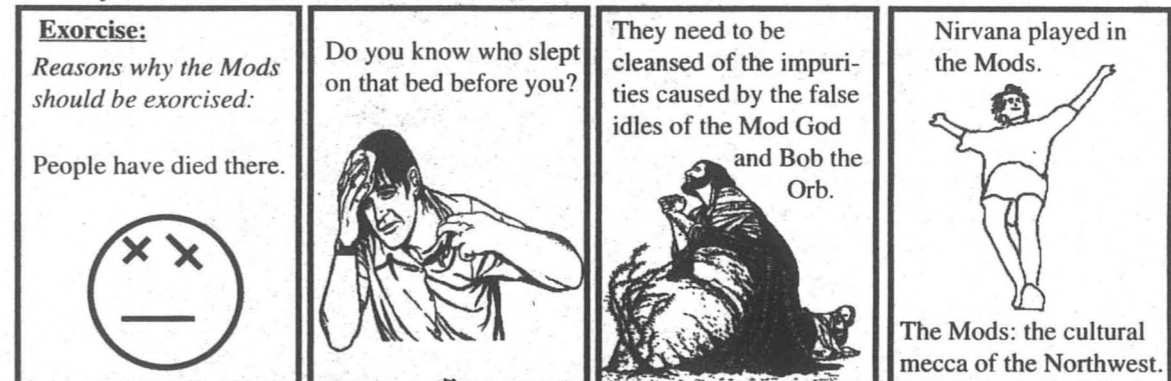
**Coven House** by Cat Kenney



**Murder For Fame** by Steve Sprunger



**-ize** by Joe Watt and Evenstar Deane



**Shards (Death)**



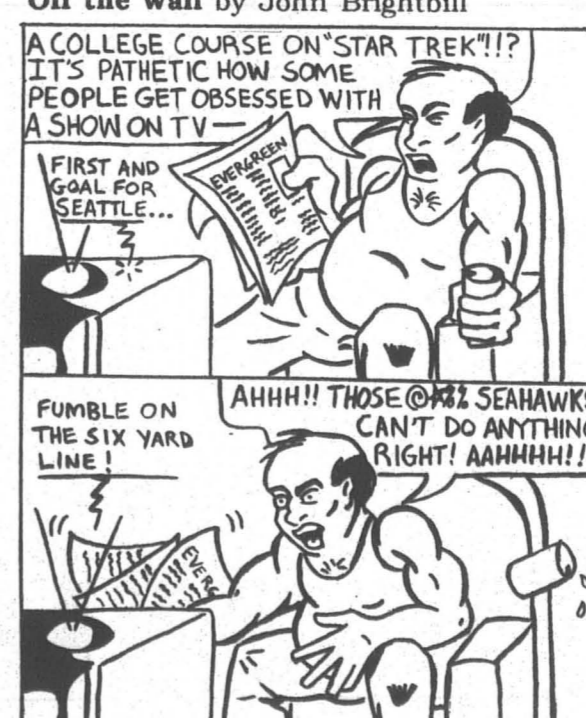
**Strange Interludes** by Lyssa Wodtke



**Order Arex** by Lisa Anne Boleyn



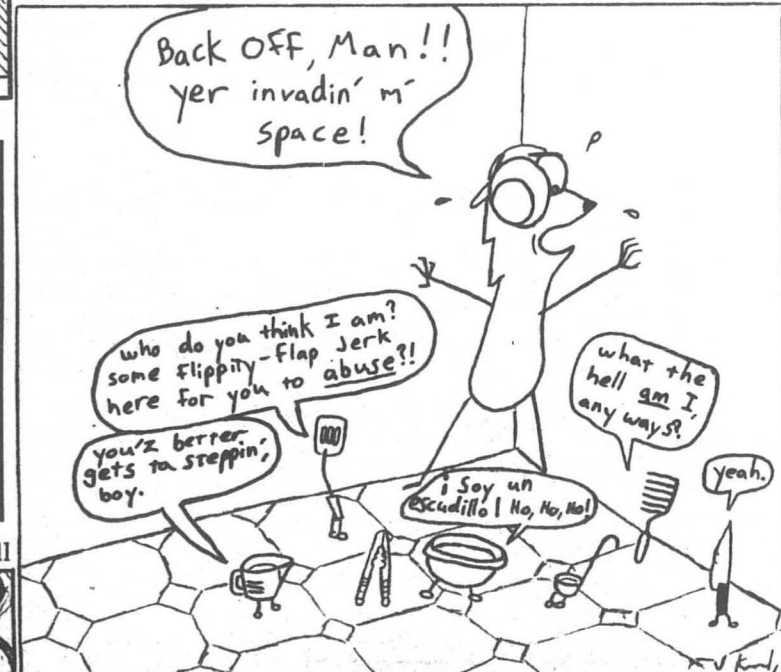
**Off the Wall** by John Brightbill



**Snuggle** by Jonah E.R. Loeb



**Hose-Head** by Josh Knisely



**Failed Cartoon Ideas** by Matt "Vlad" Parsons

**MOCHA of the DAMNED**: A COMIC DEVOTED TO BARISTA HORROR STORIES. A N.W. TRENDY TASTE TERROR MONTAGE COMPLETE WITH RECIPES AND HOW-TO'S

**MOCHA of the DAMNED**

CLIP @-N-SAVE!

Fig. 23- Salmon Latte

A SINGLE TALL NONFAT LATTE WITH A SHOT OF CANNED SALMON JUICE TO TASTE.

SALMON

Fig. 23

NEXT WEEK: BEET BREVE ROMANOV

**World at Large** by Kristopher Brannon

