

# Alums in THE business of visual INSIGHT

by Elizabeth M. Fletcher,  
student intern

**From graphic artists to photographers to film producers, Evergreen alums are hard at work in the visual arts. Over 40 people responded to our call for visually-inclined alumni. The following is a sampling of Greeners making good in the world of visual media.**



"Binky" by Matt Groening '77

## More Visual Media Alums

### Class of 1972

**Bruce Vecchito** recently left his job as head of the effects department at Alpha Cine Labs in Seattle to work for Lucasfilm, in California.

### Class of 1973

**Boyd Marts**, audio-visual producer/freelance still photographer, Seattle, WA. Marts has produced over 25 audio-visual pieces, with duties ranging from producer to director, writer and photographer. His work has been internationally distributed by Pyramid Film and Video, and has won several awards. His latest accomplishment was the selection of some of his stock photography for inclusion in the Washington State exhibition at EXPO '86 in Vancouver, B.C.

### Class of 1974

**Johanna Nitzke**, art gallery director, Seattle, WA. Nitzke has been the director of the Foster/White Gallery for five years. She selects work for exhibition, plans monthly shows, reviews portfolios and conducts studio visits. She also works with major collectors and museums throughout the nation. Nitzke credits her experience and training at Evergreen with helping her juggle the schedules and demands of being both an artist and an administrator.

**Karen Handelman** works for Lucasfilm in California.

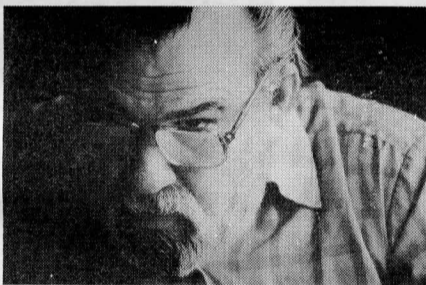
### Class of 1975

**Norm Levy**, video editor, San Francisco, CA. Levy left his job as Senior Editor at one of San

**David Current '76**  
Audio-visual producer  
Seattle, WA

Current is the founder of David Current Associates, a Seattle-based audio-visual production company. Most of the work they do is of the slide/tape and multi-image variety. Current and his four-plus associates produce shows to market and promote higher education as well as social and health services programs. They also do some work in the corporate sector. Unlike many standard shows that use formal narration, Current's productions generally feature a documentary-style script comprised entirely of interviews with people most intimately involved in the subject being covered. Some of his recent projects include a show combining Fred Astaire and computer technology for Reed College and an educational and promotional piece for Harborview Medical Center. He is currently "working on a production showing how advertising attempts to convince children and young adults that alcohol and tobacco products make you slim, healthy and attractive." Current believes that without Evergreen he would not have been able to finish his college degree, and has shown his appreciation by donating his photographic services for college publications.

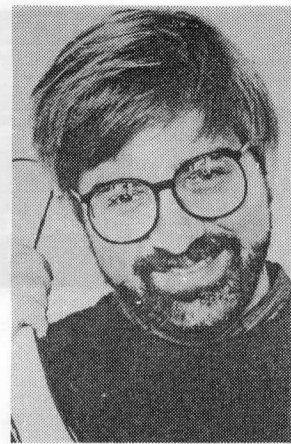
Current's photo of an adult student at Evergreen



**Claudia Chotzen '77**  
Independent television producer  
Honolulu, HI

Chotzen passed the bar in 1980 and moved to the islands to serve as clerk in Hawaii's Supreme Court. A few years later, she volunteered to help with a community video program and found she "enjoyed video production more than law." Her first two efforts, both documentaries, won several awards in Hawaii and national competition. Chotzen produced and directed "The Honolulu Wheelchair Marathon" and "It's Up to Me: Teen Pregnancy In Hawaii" for the Human Services Television Network in Hawaii. Her latest effort, "Gift To My Children: A Molokai Family," examines the lives of one woman and her children who moved to an isolated area of the island of Molokai to renew a sense of their Hawaiian heritage. The program, which was aired twice in prime time in Hawaii, examines the family's attempt to balance old traditions with the realities of the modern world. Chotzen cites her legal background as a great help in her video work, and plans to move into film projects within the next year. She is married to **Hap Freund**, a former Evergreen faculty member who is marketing her programs.

Slides from Chotzen's video, "The Honolulu Wheelchair Marathon."



**Matt Groening, '77**  
Cartoonist  
Los Angeles, CA

Groening has been writing and drawing cartoons in Los Angeles since leaving Evergreen in 1977. His cartoons appear regularly in *The Rocket*, Seattle's entertainment magazine, and the *Los Angeles Weekly*. His upcoming book, *Love is Hell*, is scheduled to be published soon. Groening is also collaborating with Evergreen alum **Lynda Barry, '79**, on a calendar for 1987. Groening considers himself "an obscure Lynda Barry." The title of the work will be "Lynda Barry 'N' Matt Groening—Funky World Calendar." Groening, who was the editor of the *Cooper Point Journal* while at Evergreen, is an ardent proponent of the school and "talks it up at every opportunity." What he liked about Evergreen was that "Evergreen allowed you to go as far as you wanted to in any interest you had. Evergreen was a school that knew when to leave you alone."

Francisco's largest studios in 1983 to edit a long form music video for Joni Mitchell. He then began work on another long project for Neil Young, and recently finished work on the Starship's MTV video, "We Built This City." Levy does freelance editing through a small company he established, and has done projects for IBM, Levi Strauss and Pacific Telephone.

### Class of 1976

**Josh Touster**, photographer, Santa Monica, CA. Josh's current photo exhibition, titled "Peace Walk," documents a seven-day, 90 mile walk for peace conducted to mark the 40th anniversary of the bombing of Hiroshima and Nagasaki. It opened in February at the Woodbury University Gallery in Los Angeles.

### Class of 1977

**Frank Foster**, Vice President of Hybrid Arts, Inc., Santa Monica, CA. Hybrid Arts was founded two years ago by Foster and President **Bob Moore '77**. The company combines art and technology by designing computer software for musicians. Their software allows a musician to compose directly on the computer, much the same as a word processor, only with music. Before forming Hybrid Arts, Foster was the director of Lazer Media, a special effects company that did work for the 1984 Olympics. Foster calls what Hybrid Arts is doing "a dramatic revolution in music," and cites use of their software by such composers as Prince, Hall & Oates and Chicago. Hybrid Arts is donating some of their software to Evergreen, for use by the college's music students.

**Margaret Stratton**, TESC Staff Photographer, Olympia, WA. Stratton returned to Evergreen in October, 1985, following the receipt of her MFA in photography and art history from the University of New Mexico in Albuquerque. She has also worked for Photography Northwest and Yuen Lui Studio in Seattle, for Kim Jew Studio in Albuquerque and as a teaching assistant at UNM.

**Sid Brown**, community television producer, Vancouver, WA. Brown is the founder and president of Umbrella Media Productions, a "total media communications" company that specializes in social service and educational productions. Brown produces cable programming for senior citizens and the hearing impaired on an independent basis for Rogers Cablesystems of Portland. In 1984, two of his programs were nominated for "ACE's," the National Cable Television Association's Award for Cable Excellence.

### Class of 1979

**Bill Ferris**, Studio Manager, Jerry Friedman Studios/Paradise Films, Ltd., NY. Bill enrolled at the Art Center College of Design in 1980 to study photography. Four years later, he moved to New York, and began working for Jerry Friedman's advertising photography and film studio. He is involved in all phases of production, prepares the execution of the photograph for the photographer and supervises this two million dollar business. In September, at the end of Bill's two year tenure with Mr. Friedman, he will start up his own studio in New York.

**Ellen Brucker Cain**, Stillmore Graphics, South Royalton, VT. Ellen and her husband Brian run Stillmore Graphics out of their home. They have a multilith press and light table set up in the back room, computer and office space spread between the balcony and the bedroom, and two sheds which house various printers, paper and "junk." Ellen works as a driver for UPS, but hopes to get the business up and running so she can work full time on advertising. Stillmore Graphics does photography, printing, promotion, letterheads, postcards and more.

**Chris Nelson**, Sound Media Productions, Olympia, WA. Nelson began Sound Media Productions in 1981, offering 24-hour slide processing, promotional photography, custom black and white and color film processing and consultation and production of slide programs. Nelson attributes his motivation for starting a photo/media business directly to his experiences with TESC Photo Services.

**Lynda Barry**, cartoonist, Seattle, WA. Barry has published two books of comics, "Boys and Girls" and "Big Ideas" and a third, "Everything in the World" will be published soon by Harper and Row. "Her drawing style is wired, as if there's an electric current going through it," writes the *Cooper Point Journal*. Barry visited the campus in February to speak to the program "Hard Country." Her work is syndicated in over 25 newspapers, and she recently signed a contract with *Esquire* magazine.

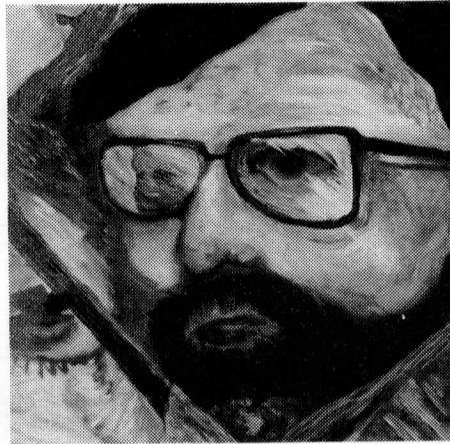




Alums  
in  
THE  
business  
of  
visual  
INSIGHT

**Louise Williams '79**  
Artist  
Lacey, Washington

Since leaving Evergreen, Louise Williams has worked at the University of California at Davis, and with the Olympia Indo-Chinese Refugee Program. She received her Master of Fine Arts from Central Washington University last spring, and is currently teaching painting and drawing at Pacific Lutheran University in Tacoma. She is also entering her work in art shows, trying to get some exposure. "My recent work has focused on figuration as a vehicle for presenting 'big themes,'" says Williams. "Death, birth, love, jealousy and despair are woven into a narrative or metaphor of sensation." She has won several awards for her work, including the Purchase Award in the Works on Paper competition at San Marcos University and the Centennial Award at the Yakima Centennial Art Exhibit last fall. Williams has appeared as guest artist at Columbia Basin Community College in Pasco, Washington. She has shown her work in Oklahoma, Georgia and Delaware, as well as locally. Williams uses the approaches to the teaching of art that she learned through courses at Evergreen, and tries to pass on something else she acquired here: the positive role model of women as artists.

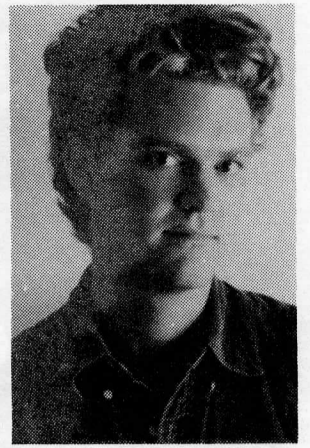


**"The Father," a painting by Louise Williams**



**Craig Bartlett '81**  
Film animator  
Portland, OR

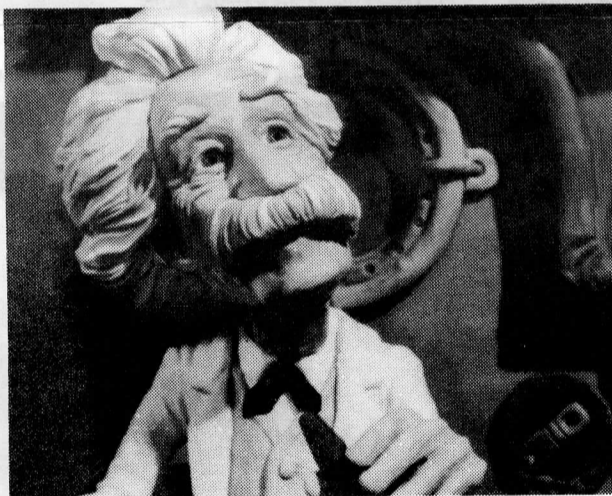
After what he considers a long (six months) job search following graduation, Bartlett was hired by Will Vinton Productions in January, 1982, to work on special effects for "The Adventures of Mark Twain," a film in Claymation. Vinton is the inventor of Claymation, the process of animating clay frame-by-frame to achieve character transformations and movements that imitate live action; and "Mark Twain" is the first full-length feature film in Claymation. Three and a half years later, Bartlett finished "Twain" and began work on special effects for "Return to Oz," which was nominated for a 1986 Academy Award for Best Special Effects. Bartlett says Evergreen is "where I learned what I needed to know about animation to get started in the business." He also has a monthly comic strip, "Organ Trail," published by the Portland Permanent Press.



**Jim Gibson '81**  
Art director/project manager  
Tacoma, Washington

After graduation, Gibson began working for Vlahovich Design, a small graphic design/marketing firm in downtown Tacoma. As art director and project manager he oversees a wide range of projects for the company, including: advertising, collateral print, posters, brochures, logos, small corporation I.D.'s, hospital signage, exhibit design and package design. Gibson's internship with Evergreen's Graphics department "was very valuable, because I had an opportunity to do the same thing I now do at my job." He meets with the clients, establishes the market and budget, and determines what the design or printed piece is supposed to do, etc. Then he does the design and supervises the printing. With all that, it's no wonder Gibson recently took a three-week vacation to Europe!

**Still from "The Adventures of Mark Twain"—see Bartlett story**



Allied Arts



**Poster designed by Jim Gibson**

**Class of 1980**

**John Beauchamp**, photographer, Laurel, MD. Beauchamp is currently working part-time as a systems analyst for Arbitron Television Ratings to help fund his two-year old company, J&B Studios. Beauchamp shoots, prints, frames and sells his photographs through J&B, calling the finished product "Phosphenes." He spent most of his time at Evergreen in Computer Services, and was one of only four or five people doing computer animation at the college. He was an assistant to **Frankie Foster '77** and **Rick Speer '76** at the First International Computerized Film Festival at Evergreen, and continues to work with both of them.

**Sherry Buckner**, artist/designer, Olympia, WA. Buckner began working for herself as an artist/designer in 1984. She chooses her own projects and clients by networking in circles where she is interested in involving herself. Her first self-elected project was to create a poster for the first Women's Olympic Marathon Trials in Olympia. The success of that project continues to set the mood and focus of her work, blending creative art with purposeful design.

**Mark Souder**, creative consultant/publisher, Seattle, WA. Souder oversees the publication of two trade magazines, *Florist and Grower*, a monthly publication, and *Sign of the Times*, twice yearly. He is responsible for gathering text, editing, photo and art selection and other duties related to publication. Souder studied business administration and graphic arts while at Evergreen, and lists photography and air brush as two of his special skills.

**Doug Plummer**, freelance photographer's assistant, Seattle, WA. Plummer has been assisting commercial photographers in Seattle for the past eighteen months, and is preparing to launch a commercial career for himself. He has recently started a stock photography business which specializes in outdoor and wildlife imagery. The first showing of his slide show of Alaska took place at the Seattle Audubon general meeting at the Museum of History and Industry in February.

**Class of 1981**

**David Mazor**, film producer, Pelham, MA. Mazor has recently been named president of ASA Communications, Inc., a Springfield-based motion picture production and distribution company. ASA has two films in production and has acquired three more for world-wide distribution.

**Dana Fram**, visual media coordinator, Washington State School for the Deaf, Vancouver, WA. Fram studied television production at Evergreen, and worked at three different television stations before she began work at the School for the Deaf. The school runs a television station on cable for the hearing impaired in Vancouver, and Fram produces, directs, writes, captions and collects programming for it. One of her hobbies is video production, and her current project is DAN-TV.

**Randy Hunting**, Olympia, WA, is an independent graphic artist.

**Peter Epperson**, Eugene, OR, works at the Oregon Performance Center in Eugene.

**Class of 1982**

**Bob Maxey**, graphic designer, Olympia, WA, has his own freelance graphics firm, which he started three and a half years ago. He works mostly in print, doing trademarks, promotional brochures and identities. Maxey has also done some three-dimensional work for a mini storage chain in Alaska, the Olympia Symphony Orchestra's season subscription brochure and a bi-monthly newspaper insert for Meredith's Stationary chain.

**Micheal Zwerin**, freelance photographer, Venice, CA. Zwerin is in the process of forming Legacy, Inc., a public benefit, non-profit media management and marketing corporation. In the interim, he is freelancing as a photographer. He and an associate want to produce quality documentary films, video tapes and benefit concerts when they begin Legacy. They plan to include a level of political and/or cultural relevance in all their work, thus "making a difference to somebody."

**LeeAnn McGarity**, graphic designer, Olympia, WA. McGarity has been working for Senate Graphics at the Capitol since July, 1985, and was recently promoted to supervisor. She designs and prints various publications and "other printed matter," generally of a political nature. McGarity considers her work a "natural progression" of her studies at the Evergreen graphics studio.

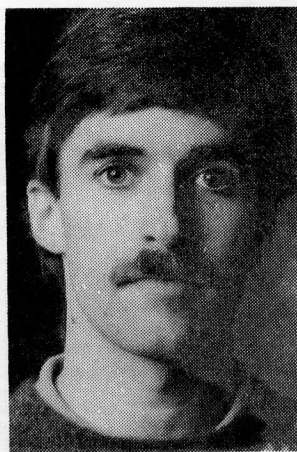
**Lisa Jamieson**, Anchorage, AK. Jamieson is working as media director at the University of Anchorage, and is also an independent film/video artist.

**Kathryn Ford**, Seattle, WA. Ford, formerly the coordinator of Lecture Hall Projection Services at Evergreen, is now the director of media at Lake Washington High School. She is also an independent film/video producer.

**Steve Brewer**, Anchorage, AK. Brewer works as a television news cameraperson.

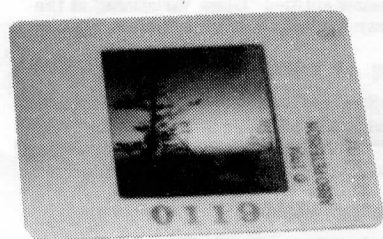
**Karen Berryman**, Missoula, MT. Berryman is a writer and producer at a television station in Missoula.



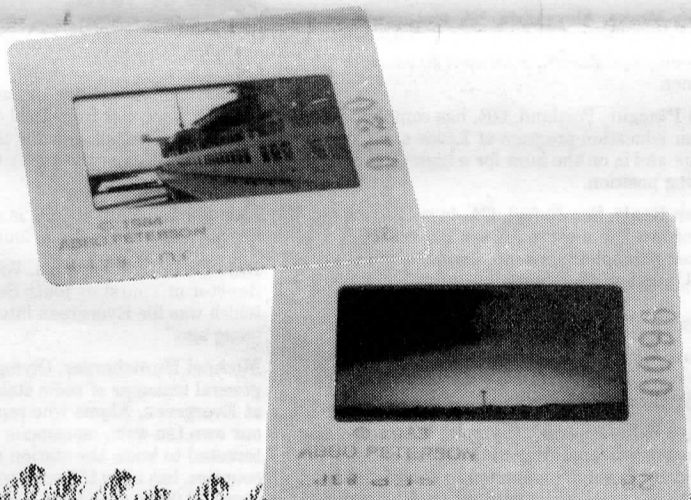
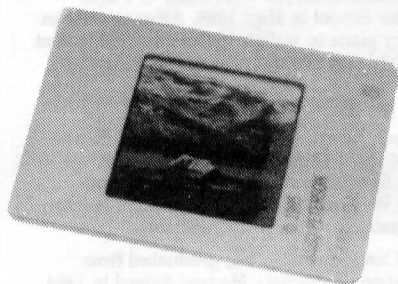


**Abbo Peterson '83**  
Photographer's assistant  
Seattle, WA

Peterson began assisting commercial photographers during a spring internship in 1983. He interned with a professional photographer in Seattle and also worked with the Washington Division of Tourism as a staff photographer. After graduation, he landed an assistant's position in Seattle, and has been working nearly full time since. Peterson's duties include working with a wide range of camera and lighting gear, preparing products and sets for studio shots, custom black and white lab work, location scouting and organizing the studio and office. He is involved in almost every phase of producing commercial photographs for magazines, brochures, ads and other promotions. He has assisted with shots of computers, gold ingots, a log truck on location (shot from a helicopter), pouring molten silver, and two cruises to Mexico from San Francisco and Los Angeles. Peterson believes that "by pursuing my natural talents through programs, individual contracts and internships at Evergreen, I am in a better position now to develop my potential and do the work I enjoy."



**A selection of photos by Abbo Peterson**



## Placement Down for '84 Grads, but Grad School More Accessible

"I'm disappointed, but not surprised," says Director of Career Development Joyce Weston, referring to the most recent report on Evergreen graduates. Completed earlier this year, the report shows that the placement rate for 1983-84 graduates is 74%, a drop from 88% for the class of 1982-83.

Weston, a 1976 graduate of Evergreen, names several factors for the one-year decline. "Evergreen's graduate placement rate is beginning to match placement rates nationwide," she says, pointing to an increasingly depressed employment market.

"One strong reason for this year's decrease in employment is that the majority of our graduates have chosen to work in public sector fields—namely social services and the environmental sciences—where funding cutbacks are at an all-time high."

Increased accuracy is another factor behind the statistics. Weston and her staff put extra effort into gathering information this year. In addition to the annual survey her office always sends out to alumni in the spring, Weston also sought out more than 50 alums who did not respond to the survey. The result was a significant increase in the number of alums who responded, from 44% of the 1982-83 class to 68% of the 1983-84 class.

"Historically," says Weston, "people tend to respond to surveys when they have positive placement to report. We called a number of folks we hadn't heard from and found most of them to be between jobs or unemployed."

When asked how unemployed and underemployed alums feel about Evergreen, Weston replies that, though many are disappointed and worried about the job market, the majority are positive about their education. "Most realize the realities of the economic situation, especially in the human services and environmental sciences, and are creatively using and building on the skills they learned in college. Almost all of the unemployed persons I spoke to are involved in volunteer activities in their area of expertise."

Other good news in the report includes a 5% increase in professional-level placement of employed graduates, from 74% of the 1982-83 class to 79% of the 1983-84 class (a 13% increase from the 66% level of the 1981-82 class). Graduate school acceptance has also increased by 5% from 1982-83.

"The actual number of graduates accepted into master's and doctoral programs is higher this year than it ever has been," says Weston. In the past, our graduates have tended to postpone further schooling for one to three years after leaving Evergreen. This year's survey shows that more graduates are opting to attend graduate school immediately. It's also noteworthy that our graduate school acceptance rate is increasing at a time when financial resources for graduate study are decreasing."

As for the future, Weston says that she and her staff will continue to work closely with Evergreen freshmen and sophomores, encouraging them to think about long-range goals and options. Despite economic conditions and a tight job market, she adds that "Evergreeners continue to compete successfully with other graduates throughout the country."

"Overall, the type of education we offer here superbly prepares our students for the 'real world,'" says Weston. As an illustration, she tells of a workshop she planned for Evergreen alumni to present their experiences working in the computer field to current students. "The alums told the students that the most valuable career tool they received from the college wasn't any specific technical skill, but the ability to read, write, speak and think clearly in many disciplines."

"As long as Evergreen continues to teach our students to do these things," concludes Weston, "the prognosis is good."

### Class of 1983

**J. Scott Campbell**, Centralia, WA. Campbell spent the last two years at the American Film Institute in Washington, D.C. as the assistant art director of *American Film* magazine. Before coming to Evergreen, he studied at the Parsons School of Design in New York, specializing in illustration. While at Evergreen, Campbell worked as a graphics intern, and for *Olympia Magazine*. He is now "back in Western Washington seeking gainful employment," and thinks Evergreen "looks yuppie compared to two years ago."

**Peter Moulton**, Olympia, WA. Moulton is the coordinator of the Olympia Media Exchange, a media arts center he helped establish at Evergreen just prior to graduating. In addition to serving as a resource center on distribution, fundraising, graduate schools and media arts research, OME has produced over three dozen events in the past three years, and joined with the Olympia Film Society to sponsor the now annual Olympia Film Festival. Moulton is also the president of Thurston Community Television, which will come on-line by July '86. "Of particular note, we finally succeeded in getting Evergreen wired for cable by July of '87."

**Eric Barrett**, independent film producer, Hollywood, CA. Barrett is now working on his fourth feature film, "Night Fighters," starring Linda Blair. His credits include associate producer of "du-BEATeo," his first feature film; producer of "Trackers," a sci-fi action film that he was hired to "fix" after the first crew went way over budget; associate producer of "Love Kills," a film about Sid Vicious of the Sex Pistols and his girlfriend; and production manager for his latest venture, "Night Fighters." Evergreen taught Barrett "how to produce" by allowing him to learn his craft by doing; he "did" seven films at the college.

**W. Peter Miller**, film editor, Hollywood, CA. Miller moved to Los Angeles in 1984, and has recently finished editing a feature film, "Trackers." "Trackers," (formerly "The Last Frontier") is a sci-fi/action film that stars Richard Farnsworth and Michael Pare. Miller has now begun work on editing another action feature film, "Deadly Pursuit." He spent his three years at Evergreen making films, and credits the school for allowing him to polish his skills as an editor.

### Class of 1984

**Karen Denman**, photojournalist, Olympia, WA. Denman went to work for Olympia's *News 52* newspaper in June of 1984 as a sports and feature photojournalist. She did most of the photo processing, as well as writing and photographing on assignment. She left *News 52* in January, 1985, and concentrated on freelance work and teaching. Denman has had work published by *Washington Wildlife*, *Northwest Edition* and *Sunset* magazine. Until February, 1986, she was also the head photojournalist and photography processor for the now defunct *Advocate*, an Olympia-based alternative newspaper.

**Guy Guillet**, Cambridge, MA. Guillet is doing graduate work in film at the Massachusetts Institute of Technology.

**Dean Hayasaka**, Washington, D.C. Hayasaka is doing graduate work in film at the American Film Institute in Washington.

**Jim Wark**, video producer, Olympia, WA. Wark is the owner of United Video Productions, which he started almost a year ago. He produces, writes and directs videos for businesses, government agencies and private customers. He is in the process of developing a television series about fishing, to be shown locally. Wark spent his time at Evergreen working in film and video, and landed a job with an independent motion picture producer after graduation. When that fell through, he started putting together his own business.

**Joan Barker**, photographer/graphic design, Seattle, WA. Barker is in the process of starting her own resume business. She designs resumes which look like publication advertisements for professionals. The emphasis is on the visuals, creating resumes that stand out in a stack.

### Class of 1985

**Rick Howard**, Seattle, WA. Howard is an animator working with Rob Roy Productions. He is currently working on a production of "The Wizard of Oz."

**Bill Livingston**, Wenatchee, WA, is currently employed as a television cameraperson in Wenatchee.

**Lois Jones**, graphic designer/photographer, Tacoma, WA. Jones started her own company, Visual Communications, last November. Visual Communications does "anything dealing with communications from a visual aspect," says Jones. One of her first projects was the layout and design for the 1985 Evergreen-Tacoma yearbook. Jones is also sponsoring two art students at the Evergreen-Tacoma campus, and hopes to move her business "into the mainstream" very soon.



## Greeners Gather Again

by Mike Hall, '76  
Alumni Board Member

Every college has their homecoming celebration, usually scheduled around a football game. Because Geoducks have no football, the Alumni Association folks last year had a homecoming-esque series of events scheduled around the event that draws the most alumni back to campus: Super Saturday.

Think about it. There are 20,000-25,000 people on Red Square every year on Super Saturday, at least umpteen percent of that crowd attended Evergreen for a time during the past decade and a half. That adds up to scores of Greeners gathering back at campus on an annual basis.

So let's have a dance, we decided last year. And dance we did, into the wee hours of the morning to the rocking sound of The Ducks. A number of alumni declared it was the best function the Alumni Association had ever sponsored.

And let's have a lounge up by the Beer Garden, we exclaimed. That idea led to last year's first-ever Super Saturday Geoduck Alumni Lounge on the fourth floor of the Library. Hundreds of alumni wandered through over the course of the day, meeting old classmates and watching TV monitors that displayed student video projects. Even the Governor stopped by and signed the guest book.

Now, get ready for the new and, yes, improved Greener Gathering II (The Sequel) on Super Saturday, June 7. Again, you are invited to dance to The Ducks at the Greater Evergreen Student Cooperative Community Organization (GESCCO) Building behind the Safeway Store in downtown Olympia. Music starts at 9 p.m. and admission will be a mere \$5. Beer, wine and soft drinks will be available to purchase and snacks are free.

The Geoduck Alumni Lounge will be open again, and this year we are extending a special invitation to Evergreen faculty and staff members, so it'll be a good chance for you to run into your favorite Evergreen instructor/mentor as well as old seminar soulmates. This year the Geoduck Lounge will be located out on the roof (weather willing), so look for it in the sunshine next to the Beer Garden.

This year's Greener Gathering includes a new feature for alumni who want to have a voice in reshaping the Alumni Association while enjoying the company of other alumni. The First Gala Breakfast and Annual Meeting will be held at 9:30 a.m. on Super Saturday morning in room 110 of the CAB. All the buckwheat pancakes you can eat with ham, fruit salad and coffee or tea—one heck of a deal at \$2.99 per person. Spouses or partners of alumni are welcome and childcare will be provided.

While you enjoy breakfast, you will be serenaded by Malcolm Stilson's Eye Opener Review... a trip down memory lane from Evergreen musicals of days gone by. Then sit back for a cavalcade of stars, including Joe Olander, Larry Stenberg and outgoing president of the Alumni Association, Scott Baker. As all of Evergreen's founding faculty have been invited to this happening, too, there might even be a surprise or two from the past.

The business portion of the breakfast agenda will concern the election of new members to the Board of Directors. Use the ballot on this page to nominate yourself or another graduate of the college for the Board. The Gala Breakfast and Annual Meeting will wrap up by 11:30, just in time for the upswing of Super Saturday activities.

For more information, please give me a call at (206) 866-6000, ext. 6220. See you Saturday the seventh!

## Alumni Association Welcomes 7,000 Greeners

by Gary Hirsch '84  
Alumni Board Member

The Evergreen Alumni Association has adopted rule changes resulting in the addition of 7,000 new Association members.

For many years, despite strong leadership, the Association struggled to fulfill its mission. Firmly directed by President Scott Baker, the 1985-86 Board turned inward to diagnose and cure its ills. At an historic meeting on January 7, 1986, the Board accepted a proposal by Larry Stenberg, director of Alumni Relations, to poll the 150 dues-paying members regarding a major restructuring of the Association.

An ad hoc committee prepared a ballot that proposed by-laws changes to grant Association membership to all students upon graduation. Forty-four percent of the membership almost unanimously approved the proposed changes. Article II of the By-laws now begins:

II.1 Eligibility for Regular Membership: All graduated and former students of the Evergreen State College are eligible to become regular members of the Alumni Association upon graduation. All other former students will be granted membership upon request.

II.2 Criteria for Regular Membership: Any person who meets the requirements of II.1 above shall be a regular voting member of the Association and shall be entitled to all rights, benefits, and privileges associated with membership.

This change eliminates the arbitrary barrier between dues-paying alumni and thousands of other graduates who have supported and been loyal to Evergreen. To paraphrase comments of the Board members, "In one form or another, we have all paid our dues."

This move is a precursor to a major renovation of our Association structure. The work it took to assess and collect dues will be better invested in the growth and business of the Association. The Board now turns its energies to recognizing its new members and to providing a structure that can represent all alumni. The issues of regionalization and inviting representation from Greener strongholds beyond our current borders are top agenda items for the Board. New membership will be called on to help us grow, to direct their future, and to participate in a representative decision-making process.

We also invite new members to respond to our invitation to accept the responsibilities of membership. Our reorganization can result in increased activities, better communication, and a stronger, more focused Alumni Association. The only way that these goals can be achieved is with your help.

To those of you who may have felt isolated and detached from your Alumni Association and your alma mater, welcome home!

### Want a By Line?

One major motivation for eliminating Alumni Association dues and expanding the organization to include all graduates was to increase alumni involvement. The *ReView* is looking for articles and editorials written by alumni to include in future issues. If you have an idea, adventure, opinion or any other written material you wish to submit, please forward a brief outline to Mark Clemens, Director of Information Services, Library 3122, The Evergreen State College, Olympia, WA 98505.

We would definitely like to hear from you!

## AlumNotes



### Evergreen Trio

Lark Dalton '75, Tom Anderson '76, and Catherine Thompson '76, were three of five featured and very talented artists included in a recent show entitled "Glass Variations" at the downtown Olympia Marianne Partlow Gallery.

### Class of 1973

Nancy Stevens, Seattle, WA, is an assistant professor in family medicine at the University of Washington Medical School, with an adjunct appointment in the School of Public Health.

### Class of 1974

Sally Johe, Leavenworth, WA, is currently enrolled in a two-year RN program and working part time in a Wenatchee hospital.

Merry Kogut, Tacoma, WA, invites everyone to her graduation from the University of Puget Sound Law School in May, 1986. After the bar exam, Merry plans to wallow in the mud and look at trees for at least two months!

### Class of 1975

Greg Booth, Alexandria, VA, is working for the Bureau of Land Management as a Natural Resource Specialist and is undertaking a job search in Washington, D.C. for a position in international natural resource management.

Ross G. Carey, Seattle, WA, graduated from Case Western University Medical School in 1984 and is now in a family practice residency at Providence Hospital in Seattle. In 1985, he returned to Seattle, and was "very sad" to learn he had just missed a reunion of the Class of '75 by a few weeks.

Bob Denison, Beckley, WV, a plant physiologist at the Appalachian Soil and Water Conservation Research Lab, sends the following original:

Let me tell you a tale about a man named Bob, He had a Ph.D.  
But he couldn't get a job.  
He couldn't get a job  
But he had a Ph.D.,  
So he said good-bye to Hollywood  
And moved to Beckley! (West Virginia, that is.)

Dean Katz, Honolulu, HI, has been employed by the *Seattle Times* since 1976. He is currently on a Gannett Fellowship in Asian Studies for journalists at the University of Hawaii.

Shelley Morse, Alexandria, VA, has earned an M.A. degree from the University of Maryland and is employed there as an instructional designer.

Carol Pinegar, Portland, OR, has completed the teacher education program at Lewis and Clark College and is on the hunt for a high school teaching position.

Sharon Ryals, San Rafael, CA, is in the process of incorporating a church of several hundred members, completing prerequisites for nursing school, and studying homeopathy and midwifery.

### Class of 1976

Edward Alkire, Seattle, WA, is currently employed in the real estate investment industry as a syndicator and broker.

Carolyn Gilmore-Judd, Olympia, WA, is working as a real estate appraiser in the office of John Sodergren. Carolyn is married to David Judd, '77, who works as an accountant for Evergreen. They are expecting their second child in June.

Brian Globerman, Sidney, B.C., Canada, completed his Ph.D. thesis at the University of California at Santa Cruz in December, 1985, and is currently a post-doctoral research assistant with the Geological Survey of Canada on Vancouver Island.

Robert Hanna, Westminster, CA, is teaching English at Pacifica High School in Garden Grove, CA, and completing his second year of law school at Western State University in Fullerton.

Bill Hirshman, Aachen, West Germany, recently married Krystyna Zimon of Poland. He is concentrating on learning German in order to teach or write.

Kris Lenke, Gig Harbor, WA, is working as a behavior specialist in the Peninsula School District.

Sarah Madsen, Okanogan, WA, is a wildlife biologist for the U.S. Forest Service, Okanogan National Forest. She completed her M.S. degree at the University of Washington, College of Forest Resources, in 1985.

Dan Mahoney, Spokane, WA, is finishing work on his master's degree and working toward his elementary principal's credentials.

Merrily Manthey, Kent, WA, is in private practice as a psychotherapist/teacher and teaches part-time at Green River Community College. She is completing her M.S. with Eastern Washington University, is a member of the Kent Arts Commission, and is listed in *Who's Who of American Women* as an entrepreneur.

Vicki Phelps and Greg Irwin, Tucson, AZ, recently purchased a farm in Colorado where they will begin asparagus production this summer. Vicki has been promoted to landscape supervisor for the internationally-acclaimed Arizona-Sonora Desert Museum. Greg is a carpenter whose home construction has been featured in the local press.

Roger Price, Spokane, WA, recently changed positions with Alaska Airlines where he is currently working as a customer service agent.

Mark D. Vestrich, Denver, CO, moved to Denver a year ago to manage a group of engineers in western states for Intel Corporation. For his old friends, Miles the cat is still alive and well at age 15!

### Class of 1977

Douglas E. Buck, Bellingham, WA, has been the business manager for Whatcom Community College since 1981.

Scott Cubberly, Olympia, WA is a live-in counselor at the O.K. Boys Ranch. He plans to pursue a master's in social work at the University of Washington this fall.

Bruce Honig, Emeryville, CA, who has been teaching and consulting in the San Francisco area, recently invented and produced a new board game called Create which has enjoyed immediate success in the California market. If you would like to find out more about this new innovation, write Bruce at P.O. Box 3325, Oakland, CA, 94609.

Karen Berkey Huntsberger, Olympia, WA, recently began work as a conference coordinator in Evergreen's office of Conference Services and Community and Alumni Relations. Karen married alum Michael Huntsberger '78 in June of 1983.

Ester Lev, Portland, OR, is working as a biologist for the city of Portland and in her spare time makes woodcut prints and cards.

John McLaughlin and Kelly Wright '85, Enumclaw, WA, are working as a night custodial team at the Crystal Mountain Ski Resort. Kelly is continuing his involvement in state politics, and John's first priority is his art work, although other adventures have included a 900-mile ski tour in Norway, being foreman of a horse corral in the Cascades, and attending graduate school at St. John's College in Santa Fe, NM, during the summer.

James Meiklejohn, Grand Junction, CO, is no longer with the International Rescue Committee on the Cambodia border. He has a new position with the county health department in Grand Junction, CO.

Carol Pedersen Moorehead, Bend, OR, has a new position as regional director (central and eastern regions) of the American Lung Association of Oregon.

### Class of 1978

Anita deGive, Seattle, WA, received her teaching certificate in 1981 from the Little School/Pacific Oaks and is presently an M.B.A. candidate at Seattle University. She drove a delivery truck for the *Seattle Times* from 1980-85 and is now the transportation manager for the *Times*, supervising distribution of the paper throughout Washington.

Kate Harris, Seattle, WA, is a budget analyst on capital projects for King County.

Dale E. Hough, Olympia, WA, is the associate director of Thurston Youth Services Society, which was his Evergreen internship worksite "long ago."

Michael Huntsberger, Olympia, WA, is the general manager of radio station, KAOS, 89.3 FM at Evergreen. Alums who remember KAOS as our own ten-watt, on-campus station might be interested to know the station now serves three counties, has over 150 volunteer staff, and raises over \$12,000 a year from over 400 listener/members. Michael is married to Karen Berkey Huntsberger '77.

Jeff Jacoby, Westport, CT, owns and operates Living Sand Productions and is involved in record production, radio theater and film directing.

Deborah Janison, Olympia, WA, was presented with an outstanding Employee Award by Governor Booth Gardner and Commissioner Isiah Turner in December 1985. Debbie is a program manager with the Washington State Department of Employment Security.

Steve Layton, Seattle, WA, received his master's of music in composition from the University of Idaho. He has had recent commissions for works from the Idaho Council of the Arts and Redlands University.

Andrew Lindsay and Janet Heintzman, Ipswich, MA, have been married for seven years and share their time with Rasta, their faithful dog, while Andrew works as a newspaper reporter and Janet serves as associate director of admissions and coach at a local private school.

Robyn Lipner, Washington, D.C., received a Congressional Fellowship on Women and Public Policy, one of ten offered in the country. At present, she is working in the office of Pat Schroeder, Congresswoman from Colorado.

Kate Tate, Seattle, WA, is currently serving as manager of marketing for Lewis and Zimmerman Associates, Inc., a multi-discipline firm specializing in value engineering.

Richard Warner and Julia Warner (Pickering), Petaluma, CA, have one daughter, Nellie. Julia continues to be a successful potter and Richard is building "a growing business" as a wine merchant.

## Greener Gathering '86

Saturday, June 7

What	When	Where
First Gala Breakfast and Annual Meeting	9:30-11:30 a.m.	CAB, room 110
Super Saturday	11 a.m.-7 p.m.	Red Square and environs
Geoduck Lounge	Noon-6 p.m.	Roof Garden, Fourth Floor, Library Building
Dance to the Ducks	9 p.m.	Greater Evergreen Student Cooperative Community Organization (GESCCO) 5th & Cherry, downtown Olympia

## Alumni Association Board Nomination Ballot & Regional Organization

1. I would like to nominate (name): \_\_\_\_\_  
to serve on the Alumni Association Board for a two-year term (terms begin on June 7, 1986.)

2. I am willing to be considered for board membership and offer my name in nomination.

name: \_\_\_\_\_ phone: \_\_\_\_\_

3. **Special Note:** The current board intends to strengthen alumni organizations in select regions which may lead to regional representation on the board. If you live outside of the Olympia area, would you be interested in the possibility of helping organize alumni in your area?

name: \_\_\_\_\_ phone: \_\_\_\_\_

Please return ballot by May 23 to Larry Stenberg, Director of Community and Alumni Relations, CAB 214, The Evergreen State College, Olympia, WA 98505.



## Class of 1979

**Doug Albertson**, Santa Rosa, CA, returned to college in 1983 to earn teacher certification in music and English. He is now a substitute teacher in Sonoma County.

**W. A. Curtice**, Tacoma, WA, works for ELDEC, an electronics firm designing custom electronic test equipment. In his spare time, he is producing a photo competition for this spring and rebuilding a house in Tacoma.

**Thomas Ghormley**, Seattle, WA, is the assistant general manager of Dick's Drive-In Restaurants in Seattle.

**Jessica Jastad**, Cheney, WA, served in the Peace Corps in Chile from 1980-82 as a health/nutrition educator. She is presently attending graduate school at Eastern Washington University and studying how to teach English as a second language.

**Tim Jordan**, Bellingham, WA, works as a family psychotherapist at Whatcom Counseling and Psychiatric Clinic.

**Philip Landale**, San Diego, CA, is attending the Design Institute of San Diego and studying interior design.

**Marcia Meyers**, Medford, MA, is working on her master's in public administration at Harvard.

**Monica Alexander Moore**, St. Thomas, Virgin Islands, has been teaching and working at part-time jobs. She and her husband are preparing to leave for Madrid, where she will learn Spanish as a second language, then on to Kenya to teach for a year as part of her graduate program in education through Mankato State University in Minnesota. **Dr. Jasper Hunt**, a former Greener, is one of her instructors.

**Kathleen Theoe**, Puyallup, WA, is the vice president for marketing and customer service at the McChord Air Force Base Credit Union.

## Class of 1980

**Jane Carton**, Vancouver, WA, is employed as a vocational rehabilitation counselor at Ann Larson and Associates.

**Peter Goldstone**, Chong Qing, China, is a foreign language instructor (English) at the Southwest Institute of Political Science and Law.

**Scott Kauffman**, San Francisco, CA. Scott is practicing law in San Francisco and his wife, Rebecca, a former Evergreen student, works for San Mateo County.

**Leo Rogers**, LaConner, WA, is up to his neck in water. If you're in his area, look him up at Adventure Charters, A.C. Boat Sales or Rogers Marine Maintenance.

## Class of 1981

**Tom Buell**, Charleston, WV, is the business/labor editor of the *Charleston Gazette*. He has also contributed stories on coal and chemical industries for *The New York Times*, *USA Today*, and National Public Radio's "All Things Considered."

**Sylvia Fuerstenberg**, Brooklyn, NY, is finishing her masters in social work at Hunter College Graduate School of Social Work. She is also involved in research at Hunter College on the uses of creative arts programs in social service agencies.

**David Gallagher**, Stamford, CT, is working on a Ph.D. in political economics at Columbia University.

**Holly Hill**, Seattle, WA, is working toward her master's degree in English at the University of Washington.

**April Rieck**, Tacoma, WA, is the technical support manager for the Seattle branch of Computer Task Group, Inc., the nation's largest supplier of professional services to private corporations.

## Class of 1982

**Kurt Danison**, Okanogan, WA, is currently writing user manuals for Okanogan County's computer system. Kurt is on the board of directors for the Okanogan Valley Nordic Ski Association and spends his free time skiing and enjoying the Okanogan Valley.

**Steven Dentali**, Tucson, AZ, received an American Foundation for Pharmaceutical Education Fellowship in 1985 and is pursuing a Ph.D. in pharmaceutical chemistry at the University of Arizona.

**Jean Gruye**, Tacoma, WA, is working toward a master's degree in science in counseling services and teaching at the Ft. Lewis extension of the University of Texas.

**Stefanie Hare**, Denver, CO, was recently appointed assistant national program manager, Community Relations Department, of the Adolph Coors Brewing Company.

**William W. Harris**, Alexandria, VA, will graduate from the Washington College of Law at American University this spring.

**Barbara Levy**, Jamaica Plain, MA, was an editorial assistant at the *New England Journal of Medicine* and a freelance calligrapher. She would enjoy contact with other Greeners in the area. Barbara's address is: 94 Forbes St., Jamaica Plain, MA 02130.

**Gretchen Christopher Matzen**, Olympia, WA, recently returned from New York where she contributed her solo part on the album and video "Our Message to the People (For the Children)" by Roots of Rock 'n' Roll Against Famine.

**Mel Moon**, Forks, WA, is the fisheries director for the Quileute Indian Tribe. He has served as a technical representative on the Salmon and Steelhead Advisory Committee and the U.S./Canada Pacific Salmon Treaty. Mel and his wife have an 11-month-old daughter named after faculty member Mary Ellen Hillaire, who passed away in 1982.

**Jamie Moore**, Alexandria, VA, will graduate from the Washington College of Law at American University this spring.

**Mara Morgen**, Medford, OR, is currently a reporter and the five o'clock anchor for KTVL, the CBS affiliate for southern Oregon. In 1984 she received the Oregon Associated Press awards for Best Treatment of a Single Story, and Best Investigative Report.

**Douglas Nebert**, Portland, OR, is a hydrologist and is studying the water of the northwest with the U.S. Geological Survey in Portland. He has been using his interdisciplinary skills to implement a computerized geographic information system for water resources analysis in Oregon and Washington.

**Oscar Spidahl**, Steamboat Springs, CO, teaches music at The Whiteman School and is also the college counselor. Oscar teaches tennis with another Greener, **Doug Cohen**, during the summer in Seattle.

**Diana Stobart**, Charlestown, MA, is a mechanical drafter at a Charlestown company and is studying towards a degree in mechanical engineering.

**Jeanne (Shappell) Tribe**, Olympia, WA, co-owns a small business with husband, Tony, called Safeguard Business Systems.

## Class of 1983

**Susan Bell**, Boston, MA, is pursuing a master's degree in exercise science at Northeastern University.

**Lilli Crites**, Brattleboro, VT, is working full-time as a potter with Brattleboro Claywork, Inc.

**Karin De Dona**, Vancouver, WA, is attending Lewis and Clark Law School. She is presently serving a judicial externship as a clerk for a federal district judge.

**James L. Gonzales**, Seattle, WA, has been elected graduate school counselor for Seattle University's Chapter of The American Psychological Association's National Honor Society.

**Jeff Stewart**, Seattle, WA, is a public affairs officer for the National Oceanic Atmospheric Administration at Sand Point.

**Evette Taliman**, Tucson, AZ, is a librarian at Amphitheater High School who frequently advises students to explore Evergreen as an option for their college education. She is also attending graduate school at the University of Arizona.

**Thomas Ziel**, Ocean Shores, WA, has been appointed director of the Inpatient Treatment Program, Thunderbird Lodge, Seattle Indian Health Board.

## Class of 1984

**Mary Gust**, Reno, NV, following a year of travel throughout the U.S.A. Mary has joined the staff at the University of Nevada, Reno, as a financial aid counselor.

**Christopher Malarkey**, Seattle, WA, has been promoted to director of public relations for the Empty Space Theater and is in charge of all media relations and non-paid promotion for the theater.

**Pablo Schugurensky**, Los Angeles, CA, is currently attending Otis/Parsons School of Art and working toward an M.F.A. degree. He has a one-man show at the Lynn McAllister Gallery in Seattle through May.

**Robert Stevens**, Tacoma, WA, is working for Congressman Norm Dicks in his Pierce County District Office.

**Andy Vengrove**, Somerville, MA, will finish his M.A. in counseling psychology at Tufts University this spring. He plans to fit in doctoral studies in the same field while spending time with wife, Julie, and new son, Jesse.

**David Williams**, Alexandria, VA, is now regularly visiting President Reagan as a photographer with the Washington, D.C. bureau of KING-TV of Seattle.

**Riede Wyatt**, Gardner, CO, is working as a gardener/teacher at Malachite Small Farm School and says it is "hopeful and peaceful work."

## Class of 1985

**Daniel A. Hunt**, Amanda Park, WA, has published a book entitled *The Road of the Sun: Travels of the Zodiac King in Near Eastern and European Myth*, has completed a book on Christian Fundamentalism, and has begun another called *The Urge to Return: Musings on the Motif of Metamorphosis*.

**Galen A. Hunt**, Amanda Park, WA, a national park ranger, is writing a book on environmental and personal philosophy.

**B. Susan (Curtis) McCoy**, Olympia, WA, married Gil McCoy last June and presently works with the Washington Association of Fire Chiefs.

**Deborah A. McLellan**, Olympia, WA, is currently working with Faculty Member Ken Dolbeare as a research analyst on the Local Governance Study Commission.

**Jean Westerlund**, somewhere in southern California, is working toward a master's in public health in nutrition at Loma Linda University where she misses the clean Evergreen air.

## Campus News



### Mandeborg Sculptures to Grace Seattle

Faculty Member Jean Mandeborg has received a \$23,000 commission to create two companion sculptures that will be on permanent display at Seattle's newly-built W.R. Giedt Public Health Laboratories, the central health labs for the Department of Social and Health Services. Awarded by the Art in Public Places program of the Washington State Arts Commission, the money enables Mandeborg to carry out the construction of the free-standing, abstract pieces for installation outside the Giedt Labs by early summer.

Mandeborg has been working in her home studio in Olympia and doing research during her sabbatical this year. When she returns to Evergreen this fall, she'll rotate into the Library through Winter Quarter, trading her place on the faculty to Bob Haft, Library slide curator and photographer. This September, you can see the best of what Mandeborg has accomplished during her leave when she exhibits her work at the Marianne Partlow Gallery in downtown Olympia. Except, of course, her two sculptures for the Giedt Labs—those you can see at 150th and 15th in Seattle.

### Phone-A-Thon Shatters Record

During 13 nights of telephoning in February, over 130 students, alumni and friends powered Phone-A-Thon '86 to new highs in every category. The effort smashed last year's record by recording \$31,240 pledged, an increase of over \$5,000 from 1985. Callers reached more alumni, parents, and friends and received larger average pledges—than ever before. For the first time in the seven-year history of Evergreen's Phone-A-Thon, alumni made more than half of the pledges. Parents of current students and parents of alumni continued to provide very strong support. When the calling was finished, 968 people had made pledges, 11% more than last year.

Proceeds from Phone-A-Thon '86 will help Evergreen students by providing scholarships, support for the library and special grants for projects and activities.

The fund year closes June 30. Remember to send your pledge so that it will be received by that date.

### Time and Money Come to Evergreen

If it's true that all we need is time and money, then Evergreen has been doubly rich as both *Time* and *Money* magazines have selected the college as a subject for feature articles this spring.

The *Money* magazine article, which was due to hit national newsstands at the end of April, takes a look at "public ivys" public colleges that offer the quality of a private-school education. Evergreen was one of ten colleges selected by *Money* as "the best bargains in higher education." Other schools are California State Polytechnic University at Pomona, North Arizona University, the University of Minnesota at Morris, Northeast Mississippi State, Appalachian State, James Madison College at the University of Virginia, the University of Massachusetts, the State University of New York at Geneseo and Trenton State College.

The editors of *Time* also selected Evergreen as one of nine small colleges that are "making an impact on the world." The *Time* article, which was scheduled to hit Northwest newsstands as the *ReView* went to press, lists Evergreen as the only west coast school selected.

### Evergreen Favorites

Wonder about what current students are reading compared to your college days? In the true Greener spirit, students continue to devour books at a torrid pace. Here's the latest from the Bookstore:

- Best Selling Books**
1. *The Far Side Series* (6 books) by Gary Larsen, \$5.95-\$9.95
  2. *Intimate Strangers* by Lillian B. Rubin, \$6.95
  3. *Pornography and Silence* by Susan Griffin, \$6.95
  4. *Out of Africa* by Isak Dinesen, \$5.95
  5. *Isak Dinesen: Life of a Storyteller* by Judith Thurman, \$5.95
  6. *Sex and the Brain* by Jo Durden-Smith, \$4.95
  7. *The Color Purple* by Alice Walker, \$3.95
  8. *I Rigoberta Menchu* by Elizabeth Burgos-Debray, \$8.95
  9. *Hit or Myth* by Robert Asprin, \$3.95
  10. *Mountain in a Cloud* by Bruce Brown, \$6.95

### Evergreen Authors

1. *The Year Left* by Mike Davis, \$8.95
2. *Neopolitics* by Ken Dolbeare, \$8.00
3. *Against the Current* by Richard Jones & Barbara Smith, \$11.95

If you are interested in any of the above titles you can purchase them by sending a check to the Evergreen Bookstore, The Evergreen State College, Olympia, WA 98505. As a service to alums, the bookstore will cover shipping fees. Not bad!

## Summer Workshop Series

There is a new entree on the menu of summer offerings being served up by Evergreen's Conference Services. The college's ideal summer setting, in-depth programs and skilled professionals have been combined into a non-credit, resident summer workshop series. Tuition will cover lodging, meals, special events, Recreation Center privileges and workshop materials. Workshops and their Evergreen facilitators:

### A Week Away for Superwoman

July 20-25  
Barbara Gibson, mental health counselor

### Fundraising for Nonprofit Organizations

July 20-25  
John Gallagher, director of development

### Intensive Journal Writing

July 18-20  
Marilyn Frasca, faculty member

### Tennis and Fitness Camp

June 22-27 (adults) and July 20-25 (juniors)  
Bob Reed, tennis coach

### Stress, Grief and Loss (for educators)

July 20-25  
Bill Aldridge, faculty member

### Performing Arts Workshop

July 20-25  
Ed Trujillo, performing arts coordinator

The deadline for registration is June 15. If you want to include one of these workshops among your summer delights, contact Larry Stenberg, Director of Alumni and Community Relations, at Conference Services, The Evergreen State College, Olympia, WA 98505, or call (206) 866-6000, ext. 6192.

### May Marriage

Congratulations to Evergreen President Joe Olander on his engagement to Olympia attorney Sheryl Hayashida. They will be wed on Saturday, May 31.

### Unsoeld Fellow Faces Busy Pace



Evergreen's first Unsoeld Seminar Fellow, Roger Fisher of the Harvard University School of Law, will keep a hectic pace when he visits campus on May 12, 13 and 14. But Fisher is no stranger to an active schedule. His visit to

Evergreen is sandwiched in between a trip to Seoul, South Korea and a stay in Los Angeles. Both trips are also in conjunction with his work as director of the Harvard Negotiation Project.

The author of the highly-acclaimed *Getting to Yes* will share his perceptions on effective communication in a free lecture entitled "Negotiating with the Russians and A Spouse: Is There a Difference?" The public lecture takes place on Monday, May 12, at 7:30 p.m. in the lobby of the Evans Library.

While in Olympia, Fisher will work with students in four large academic programs, address a meeting of the Olympia/Thurston County Chambers of Commerce, meet informally with members of the faculty and staff and have dinner with the Unsoeld Seminar Fund Committee.

### Giddyup, Geoducks

The Evergreen's Recreation and Athletics staff will once again host the Great Geoduck Gallop on Saturday, May 17, from 7 a.m. to 7 p.m. at Capitol Lake in downtown Olympia. Objectives are to raise money for intercollegiate athletics travel expenses and to continue accumulating mileage to add to the almost 1,300 miles covered last year. Refreshments, entertainment and random prizes, including a 10-speed bicycle, will be available to all participants who gather pledges or contribute to the mileage total.

The Athletics staff is also searching for alum athletes. We're planning a spectacular fall homecoming and want to invite everyone to attend. Send a note to CRC 302, care of Geoduck Jocks. Call 866-6000, ext. 6530, if you would like more information.

### College Honors Memory of Joanne Jirovec



Evergreen reacted with grief and horror to the March 22 murder of long-time Evergreen employee and alumna Joanne Jirovec. Her body was found inside her van near Interstate Five about 35 miles south of Olympia Sunday, March 23.

Lewis County authorities are continuing the investigation, but as of yet have announced no suspects.

During the week following Jirovec's death, co-workers, students and alumni supported each other as they remembered Jirovec's compassion, humor and dedication to the college and community. Jirovec was an administrative assistant to the academic deans for the past eight years and had worked at the college since 1970. More than 500 people gathered to honor her memory at an on-campus service. The ceremony was filled with tears and laughter as relatives, co-workers and friends recalled her wit and caring.

A memorial garden to honor Jirovec has been established, and those wishing to contribute to the fund should send checks to: Joanne Jirovec Fund, Development Office, The Evergreen State College, Olympia, WA 98505. Friends are also invited to contribute to Safeplace, a rape relief and women's shelter, in Jirovec's name. Checks can be sent to: Safeplace, P.O. Box 1605, Olympia, WA 98507.



## The Lessons of Diversity

by Elizabeth Diffendal, faculty member in anthropology

When I began work on my doctoral thesis two years ago, I chose to do a study of the impact women and people of color on the faculty had made on the development of Evergreen. As part of my research, I surveyed members of the college's first five graduating classes, promising them anonymity in return for an open, honest appraisal of their experiences during the early years of Evergreen.

From the outset, Evergreen has recognized that faculty have a tremendous influence on the values, images, theories and interpretations that are perpetuated in society. The college capitalized on a golden opportunity when it included among its first faculty hires gifted people of color who have since contributed immeasurably to the cultural diversity of Evergreen and its graduates.

Not surprisingly, several graduates credit the people of color on Evergreen's faculty for giving them a new, intercultural perspective. One alum remembers former Faculty Member **Jose Arguelles** and his book, *Mandala*, "caused great excitement among us and for me, personally, set the stage for a major change in direction. In the fall (I enrolled in) Arguelles' program, 'Impact of Buddhism on the West' and 'I Ching Studies' the following spring. . . I became fascinated with the relationship between Buddhism, Taoism, Asian art and the Chinese linguistic system. Arguelles encouraged me to look at other linguistic-oracular systems like the Hebrew Qabbalah. . ."



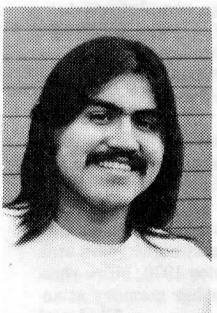
Arguelles



Reynolds

Another graduate recalls 1973-74, "my second year at Evergreen, (when) I took a contracted study in psychology with **Ed Reynolds**, a Black professor. He added an awareness of how race/culture affects 'mental health.'"

Faculty Member **Darrell Phare** gave a third alum a new perspective on politics and personal conviction: "Darrell's political activism, his fearlessness, was infectious," the alum says. "I had learned at Berkeley that if you throw rocks at armed police, you get shot. Darrell went to Wounded Knee, South Dakota. They didn't throw rocks at Wounded Knee. It takes a great deal more guts to put your dreams on the line when guns are involved."



Phare



Hillaire

Photos from the early 1970's  
Courtesy of TESC Photo Services

One of the most important products of education—personal growth—receives prominent mention from many of the early Greeners. "I'll never forget my friend and mentor, **Mary Ellen Hillaire**," says one. "Mary recognized the problem I had. Her people had the same experience trying to integrate two cultures and make it sensible. . . I always had a bad image of myself because I had a terrible time in my elementary grades. Even though I was born here in the United States, I was brought up completely Asian. In Montana, prejudice and discrimination were rampant. Mary. . . was able to understand my background and cultural conflicts. . . Today, for the first time, I feel whole and Mary Ellen Hillaire had a lot to do with my personal growth."

Just as an Asian alum made the preceding tribute to a Native American faculty member (Hillaire was a Lummi Indian), many white alums revealed that they learned a great deal about themselves from faculty of different color and cultures. Crediting now-retired Faculty Emeritus **Winifred Ingram** for inspiring self-confidence, this alum points out that "I grew up in rural Iowa which is very white. My only contact with people of color was at summer YMCA camps, Saturday ballet classes and through an activist minister in a church where my mother was choir director. . . Ingram served as a counselor/therapist for me. . . She was probably the most 'normal' person around me at that time. She had a great belief in herself and I felt she believed in me."



Ingram



Daum

Another alum recalls **Ida Daum**, who was part of the six-person teaching team for the "Human Ecology" program. "Ida's personal impact on me was multi-faceted," says an alum. "She was the first Black instructor I ever had. She was small in person and large in opinion and convictions. And she was very young, only 26 years old, much closer to my 19 years than I was accustomed to. . . Her comfort in what she was, and her confidence, somehow made it okay for me too. She helped me get by several blocks that could have obstructed my education, all in one lesson."

The impact of faculty of color on white students often went beyond personal growth, creating a powerful dialogue and exchange of cultural perspectives. One of several alums who described experiences with Black faculty members recalls the 1972 program, "Politics, Values and Social Change": "**Rudy (Martin)** was just the right seminar leader for the time. We were studying modern America, his specialty. He was able to present the race question like no one I'd known before. His skin was black, but he didn't fit any of the stereotypes I had of Black people. I'd never discussed race relations with a non-white person before. He opened a new realm of human understanding to me."



Martin



Mimms

"In the summer of 1975," remembers another alum who attended Evergreen while working here, "**Maxine Mimms** started a coordinated studies program for staff at Evergreen entitled 'Educational Opportunities.' . . The program was exciting and challenging. This was my first experience with a Black teacher. . . I appreciate Maxine's initiative in starting this program. . . Maxine possesses a great skill in motivating people. . . I wholeheartedly feel I have learned much culturally from my experience as a staff and a student of Evergreen."



Parson

Faculty Member **Willie Parson** stands out for several reasons in the survey response of another alum: "My outstanding memory of Parson is of his gentleness and gentlemanliness and his scholarly attitude. He was a superb teacher. I remember being really awed by him, as I considered a Black man with a real live Ph.D. in biology as some sort of genius. It is important to point out here that as far as race was concerned, my memory of Willie is mainly that he was first and foremost a scholar, secondarily that he was Black. You must remember that I am a real, live Southerner. Both of my grandfathers were in General Lee's army. At 19 years of age, with that background, Willie was anomalous for me."

Just as significant as the impression made by faculty of color on white students was the impression they made on students of color. This Black alum identifies why it is so crucial to have intracultural faculty members:

"Maxine Mimms is an outstanding role model. . . She was one of the first Black women I knew to earn a Ph.D. . . Rudy Martin is the first Black academic dean I ever met. . . Sometimes people do not know how inspiring it is to see people of color, especially when you are a person of color, in posts of importance. . . Seeing Maxine and Rudy was the only reason I knew I could be a college graduate."

My thanks to all the alumni without whose help I could not have undertaken, or even begun, this project. The views of the alumni which you have read above are representative of the majority of survey respondents, who are Evergreen's witness to the lessons of diversity.

## "Squirt on, geoducks!"

## Greeners Respond to

by Keith Eisner, Information Specialist

Tabulating the responses to Part Five of the Geoduck Questionnaire that appeared in the last issue of the *ReView* was as good as sitting in on an Evergreen seminar. Out of 137 respondents, 48 took the time to write answers to the six questions that were raised in the "Tough Questions, Tough Answers" article that examined issues discussed in a November 13, *Seattle Weekly* editorial entitled "Asking the Tougher Questions About Evergreen."

Responses range from the wordy and convoluted to the short and sweet ("Please leave the trees!"); from unbridled enthusiasm ("Evergreen is doing/was doing/will always do an excellent job!") to deadpan sarcasm ("Campus life wasn't dull if you didn't mind hearing 'Old Coast Highway' at every dance. If you got tired of bluegrass back then, tough, son"). For every question raised there are strong negative and positive answers, and, in the true Evergreen spirit, responses that thoughtfully balance both sides and refuse to say "yes" or "no."

### 1. What's your feeling about Evergreen's "front-loaded" curriculum as an educational strategy?

An overwhelming majority (33 respondents of the 48) are not only in favor of "frontloading" (concentrating resources and faculty expertise on first- and second-year student programs), but feel it was the single most important factor in their education.

"One of the reasons I transferred to Evergreen. . ." says **Marya Nowakowski '74**, "was that all the interesting courses (at a brand-X university) were upper level, and to get to them I had to wade through lower level intro classes. The only ecology course available there. . . was a senior/grad-students only class. At Evergreen, I signed up for 'Political Ecology' and was able to study ecology at what I considered an 'advanced level' as a sophomore."

"... At Evergreen I learned the exciting stuff first—concepts and research applications and connections. I then had to do the hard work of learning fundamentals and gaining sufficient depth in certain areas to be able to do advanced work with competence. . ." writes **Drew Carey '76**. "I have subsequently. . . taught in a British university and in a traditional, elite, American university. In both settings I encountered structure that stressed delayed gratification: the good stuff comes after you learn the fundamentals. . . this style is inefficient in terms of motivation and imagination."

While most appreciate "front-loading," there's concern about the availability of advanced study, that "the back end of the curriculum doesn't run out of gas." "Frontloading is great," says **Debbie Leon '76**, "if you're a freshman or sophomore. In the last two years, though, it can be tough to find the advanced/specialized expertise. I always felt like I was scrambling to catch the faculty member with the expertise I need as a sponsor. Often the person(s) was tied up in an unrelated coordinated study program."

An '82 alum, who wishes to remain anonymous, relates a different experience: "I had the feeling when I was at TESC that there was considerable strength in the upper-division courses as well as the lower division. Was I wrong?" "I don't see a right or wrong answer," says an '83 alum, adding that the most important goal is to insure a balance of front-loaded and advanced study.



## "Tough Questions, Tough Answers"

### 2. Did/does Evergreen rely on letting students teach themselves? If so, too much or not enough? What was/is the effect?

While the majority of respondents (29) feel Evergreen's reliance on students "teaching themselves" was an "excellent strategy," a sizable number (17) express doubt about its success. Some comments:

"The greater part of intellectual pursuits are solitary by definition (reading, writing, research), yet I have never seen an environment which provided more support and assistance to students by the faculty than Evergreen," observes **Nanci Watson '74**.

"I prefer receiving information rather than re-discovering it. I was chagrined to have to go through 'learning hoops' when instructors could have provided answers," counters a '78 alum.

"Students teaching themselves is a great idea; cooperating with others to teach yourself is 'real world.' Seminars are for breadth, learning a process of integration, rather than for primary learning of a subject matter." **Richard Staehli '82**.

"A teaching plan ought to not just describe what the faculty is going to do at each point... but should explicitly detail—in observable behavior—what the student will do for herself... Without some hard evidence one way or another, self-teaching will continue to be sometimes worthwhile and sometimes (worth)less," **Grady Ward '79**.

### 3. "What's good or bad about faculty members teaching out of their fields?"

The most prevalent answer to this question was neither positive (17) or negative (6), but the response of "sometimes good, but on the other hand..." by 25 alums. Some comments:

"Good—keeps 'em on their toes. Underscores idiosyncrasy of most disciplinary boundaries. Bad—burnout. Too much reading/digesting, translating of new materials. Makes publishing very difficult (impossible?)," **Susan Feiner '75**.

"This is obviously a question of context," says an '84 alum. "A dynamic grouping of instructors negates the implications involved with this whole issue."

"Sure, faculty members can add a new dimension to a program. Overall, though, in this situation, their expertise is largely wasted." **Debbie Leon**.

### 4. Did/does Evergreen need a gym? Was/is the CAB dreary? Did/does the college need more dorms? Was/is campus life dull?

While 20 Greeners feel that Evergreen doesn't need a gym ("What's the matter with running in the rain like we did?" was a popular theme), 24 Geoducks are in favor of a campus gym. ("Even flower children need a quality place to exercise—shooting baskets over steam pipes does not qualify,") writes **Ed Alkire '76**.

As for the CAB being dreary, **Nanci Watson '74**, counters that "The CAB was cheery. I have never seen such intimate social networking"; while **David Williams '84**, says he was proud to show off the CAB. On the other hand, seven alums called Evergreen's social hub such things as "a concrete canyon" and "horribly dreary and uncomfortable."

While only 13 people responded to the question of more dorms, (seven against building more dorms, three for, and three with no opinion) sentiments about campus housing were strong and largely positive. "When I lived in the dorms I enjoyed campus life immensely," recalls an '82 alum. Housing also drew the most fascinating of all Questionnaire responses:

"Turn off a few of those big lights over there in the Dorms. Did you know pumpkins turn female when exposed to fluorescent lights? Mice grow jagged tails and behave irritably. What do all those lights do to the dorm students?" **Laura Yoong-Carlson '79**.

"I was too busy to notice if campus life was dull," was a prevalent response of 18 Geoducks to the charge of a ho-hum social and cultural scene here. "On the contrary," writes **Paul Mendenhall '79**, "at no other time have I been so continuously, happily occupied." On the other hand, several Greeners replied that "campus life shut down after 5 p.m.," and "Olympia isn't New York."

### 5. Will Washington benefit from Evergreen even if it can't fund the college well enough?

"Of course!" replies **Susan Feiner**, "The question reveals the questioner's need for seminar 'immersion.' Most Greeners (28) agree with Feiner but many add an important condition—adequate funding. "The state," says an '83 alum, "will continue to benefit from Evergreen if it insures the continuance of Evergreen's educational philosophy and alternative methods. The benefits will sharply decrease as it becomes more traditional and thus a trumped-up community college."

### 6. Was/is Evergreen doing a good enough job?

Twenty-one respondents gave an overwhelming yes, three a resounding no, and 20 said "yes, but we can do better!" Some comments:

"Depends on your definition of Evergreen's job. Did it benefit me? Absolutely! I would never have achieved a Ph.D. in economy without going to Evergreen," **Susan Feiner**.

"With the givens, the miracle is that Evergreen has done so well. The nature of people attracted to the philosophy of Evergreen is such that they will always be looking for ways to improve, given the resources needed to make those changes," Former Faculty Member **Esther Barclay**.

"Evergreen is going a good job. There are problems. Faculty and students need to be better included in decision-making. There should also be more of an effort to achieve the aims of Affirmative Action," **Shawn M. Blaisdel**, current student.

"Was (doing a good enough job), Yes! Decreasing, though, every year. Losing its vitality!" an '83 alum.

"Evergreen does an okay job. People learn to question our institutions, our society and to learn to think imaginatively. The bad: Administrators... use 'budget cuts' whenever they don't have an answer. The place seems to be too wrapped up in paper work. It seems impersonal. Many of the older faculty have blurry-looking eyes. Why? Where's the spark?" **Laura Yoong-Carlson '79**.

"I feel blessed by having had the experience of an Evergreen education. Had I not seen the mountain top, I would never have slogged through the drudgery of graduate school," **Paul Marshall**. As **W.A. Curtice '79**, exhorted, "Squirt on, Geoducks!"

### Toward a Greener Tomorrow

Responses to Part Two of the Questionnaire indicate Evergreen should consider "keeping" and "fixing" a number of features as it moves toward the completion of its first Strategic Plan this summer (See "Two Plus Two=Sweet Sixteen," Winter *ReView*).

Far and away the most popular academic feature is the Evergreen concept of seminars, which received 52 "votes" as the main thing the college should keep. Also high on the list is Evergreen's interdisciplinary approach to education (31 votes), individual contracts (22), the evaluation system (18), small student-to-faculty ratio (14), internships (12) and coordinated study programs (11). If you combine group contracts, which had 11 votes, with five votes for small classes and group projects, it's apparent that small, intensive academic endeavors are also a clear priority.

Also frequently touted are the college's commitment to liberal arts education; a variety of learning modes; student-centered learning and responsibility; open, alternative structure; life-long learning and frontloading the curriculum. Evergreen's excellent faculty and keeping them accessible are high academic priorities, too.

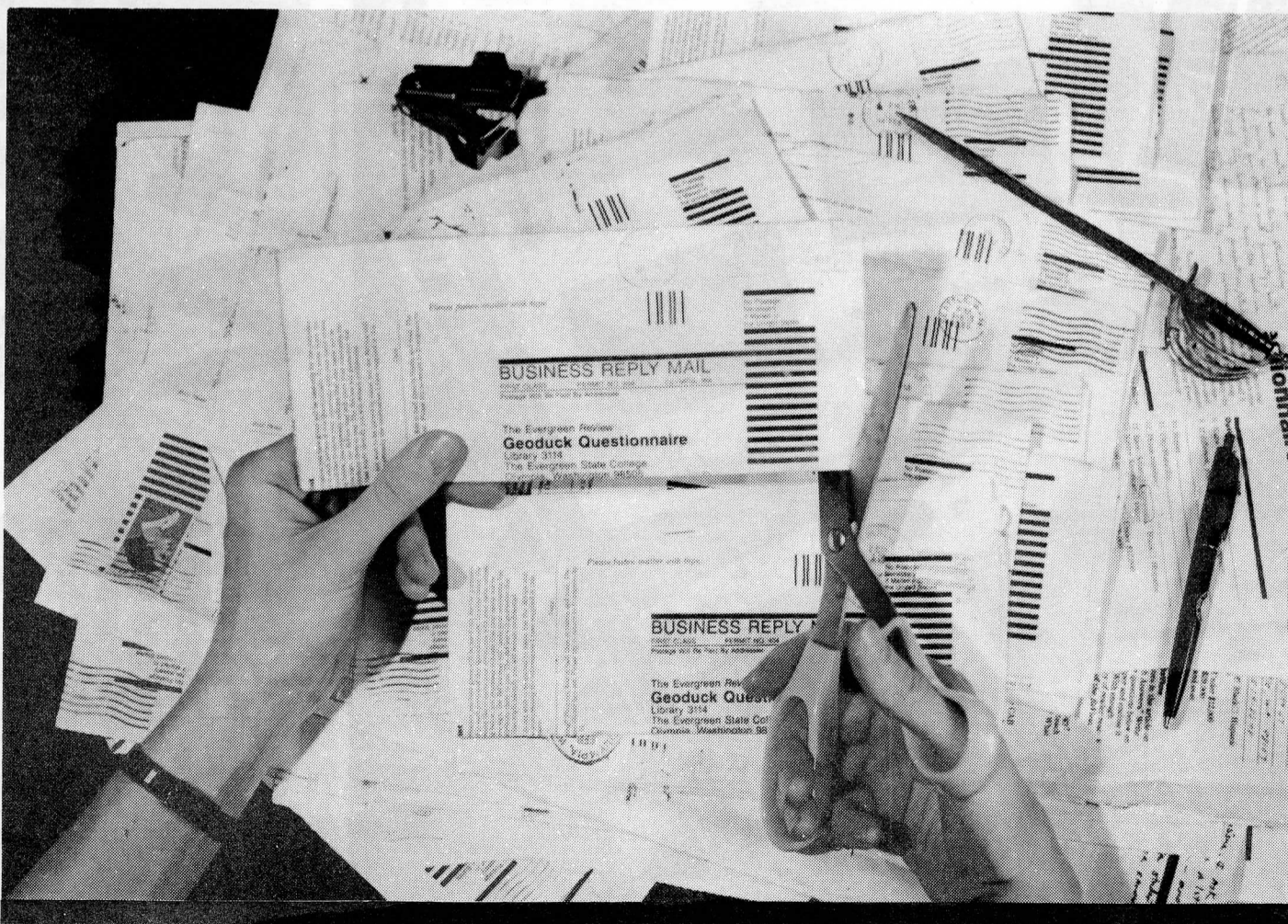
Other areas of the college that survey respondents think should be kept are the accessibility of equipment and facilities, particularly Media Loan, and maintaining the quality of Library services.

Responses are spread over a wider range of possibilities as far as things Evergreen should fix. Heading the list academically (in contrast to the frontloading school of thought) are the quality and lack of advanced programs (16); the need for more computers and accessibility to them (13); the lack of support for the expressive arts (8); and the need for more offerings at the graduate level (7). Around campus, the lack of space and privacy in Housing is of concern, as are the quality of academic advising and career planning, accessibility to equipment and facilities such as Media Loan, and communication throughout the campus community.

Copies of the complete results of this portion of the Questionnaire were made available to Evergreen's Planning Council, and are now also available to readers of the *ReView* who write to "Keep/Fix Answers," Library 3122, The Evergreen State College, Olympia, WA 98505.

## Thanks

Evergreen and the *ReView* extend their gratitude to all the Greeners for their heartfelt and thoughtful responses to the Geoduck Questionnaire.





## The Second Annual Greener Gathering

Evergreen alumni had such a good time last year that we're going to do it all over again at Super Saturday on June 7. See schedule on page 4.



Already headed for the Gathering are (l. to r.) Doug Scrima '78, Bob Shirley '83, Kate Crowe '80, Steve Bader '82 and Corey Meador '82.

**Also Inside:**  
Questionnaire Results  
Alum Association  
Welcomes 7,000  
Greener Gathering  
Roots of Diversity

Archives  
Evergreen State College  
Olympia, Washington 98505

