

If I could hair

by Joshua Aaron Eberle

In your own weakness, you shall see.
Your eyes will constantly be on the dead. The dead though buried wish to rise.
Yet their wishing cannot match your weakness.
The dead will remain dead and you – weak.

In your weakness there will be times that you are mistaken for strength. You will crave strength like your own blood. Your mothers and fathers will distance themselves.

You will thirst for the life you keep from yourself – you will drink only jealousy of the selves you deny.

Be happy my Sisters, dance weak, act as one properly should. Brothers, remember to remain tough and at all costs, but most of all stay isolated. Loneliness is your friend.

Mardi Madness

by Kevan Moore

What they say

The following is part of an approximate timeline provided by the Seattle Police Department (SPD) for Tuesday, February 27:

- 2200 Officers don protective gear
- 2230 Traffic closed to Pioneer Square area
- 2250 Officers arrest suspect brandishing fully loaded semi-automatic .45-caliber handgun.
- 115 Gunshots heard; suspect disappeared into crowd
- 110 Officers observe crowd overturning vehicle
- 115 Dispersal order given
- 120 Officers begin dispersing crowd using OC spray
- 200 Dispersal completed.

SPD made 21 arrests for the following reasons: 6 assaults, 2 dangerous weapons, 1 reckless endangerment, 4 obstructions, 1 pedestrian interference, 1 riot, 1 concealed weapon charge, and 2 thefts. Two officers sustained minor injuries from projectiles. 42 people reported to Harborview Medical Center of the approximately 72 injured—two of whom were critical and one who was shot.

According to the Pioneer Business Association, there was \$80,000 in damages, most of which was broken windows or doors. Two vehicles were overturned and many others were damaged.

What I say

I'd like to make some sense of Seattle's Fat Tuesday style. This will never happen.

I went to Seattle so I could document whatever happened. I parked a few blocks from Pioneer Square a little after 11:30 p.m. and made my way toward the crowd and noise. Apart from a few people making their way home, the first thing I saw was a Peacekeeper (an armored personnel carrier or tank) surrounded by SWAT-type officers. Then I saw police standing near motorcycles and bicycles and atop horses. It was about 11:40 p.m. and was also the last time I saw any uniformed officers for nearly two hours.

While not seeing any police officers in that time, I did see a guy get cold-cocked out of nowhere by a man who quickly disappeared. As the disoriented man, who couldn't defend himself, tried to get his footing, a second attacker punched him in the face. The second blow sent the man to the ground unconscious. Once he was on the street, a third assailant rolled him off his back long enough to steal his wallet (an assailant because after he robbed the unconscious man, he kicked him in the ribs).

No one was safe; everyone was fair game. Carrying a digital camera from Media Loan only made me more vulnerable. For one, I was looking at a screen instead of over my shoulder. Secondly, I was potentially compiling graphic evidence of various crime and criminals who didn't like that.

All in all, Mardi Gras was the most senseless, inhuman display of brutality I've ever seen. The fact that a gun was fired amongst the crowd, hitting one man in the shoulder, and the police didn't start to clear the area immediately is depressing. The fact that medical personnel, bouncers and a handful of courageous good

See MARDI GRAS p. 8

TESC
Olympia, WA 98505

Address Service Requested

Evergreen in wake of the quake



by Perrin Randlette

Nervous laughter — A group of students gather in Red Square shortly after the 6.8 earthquake rolled through Evergreen

by Greg Skinner

Rand Ouellette and five other student interns were meeting in the Library's basement Digital Imaging Studio (DIS) when last Wednesday's earthquake began to shake the entire Northwest. "It got really loud then the lights went out." Two stories above Frank Motley look up in his Library office and watched the ceiling tiles vaporize. Across Campus in his first floor Organic Chemistry class Jude went from trying to get the gist of Carbon Silica Acid to trying to understand what was going on under his feet. Out in Red Square a few escapees were watching the five-story Clock Tower rock back and forth.

By the time the 45 second quake ended, one window popped out of the Library Building, a water pipe above the financial aid office burst, 60 percent of the of books in Evergreen's collection were two feet deep in the aisles and all the elevators were knocked out of commission. With lots of minor damage the Earthquake turned into an injury free real-time test to see how the college copes with disaster. Evergreen did OK.

Outside Ouellette found people crying and puking, but no was hurt and no buildings collapsed.

The February 28 quake caused an estimated two billion in damages. Compared to Olympia, Evergreen got off easy. Michelle George, director of facilities, credits soil type and building codes for Evergreen's escape. Something is learned each time an earthquake effects a building in the world. George pointed out one lesson from the 1994 Northridge quake

changed the way steel is now attached in Washington State. The Evergreen Campus was built in the late sixties and early seventies, a time when seismology was first being reflected in building codes, nation wide. "Even the way we compact fill dirt is affected by code," said George.

In Olympia's Marathon Park the parking lot is split open in three places as water and compact fill shot up through five-inch gaps in the pavement. Evergreen's parking lots suffered nothing. As the upper buttress's of down town rained to the ground, campus buildings shook violently and floors rolled, but the concrete stayed where it was put.

A first draft damage estimate sent to FEMA on Monday, March 4, set a rough repair cost at \$800,000 in damages that could take six months to repair.

George says the typical poured concrete building doesn't collapse from a quake like a brick and mortar structure. Instead, by staying upright, it tends to suffer so much damage from flexing, essentially crumbling around the steel, that it must later be torn down. "Some movement is good, too much is bad." All of Evergreen's structures moved just right. "By Thursday night structural engineers approved the use off every room on campus 1.5 million square feet. The Campus Recreation Center remained closed over the weekend for clean up from ceiling tiles collapsing and a busted pipe. The Library stacks are still closed for clean up.

While most administrators are focusing on the success of architecture and retrofitting, a campus wide quake discussion pointed out one problem very clear. Not many people "ducked or covered." In a bit of a panic, Greeners all over

campus fled for blue sky.

In Housing, people fled the building stand on bridges near the base of 10 story dorm. On main campus, students staff, faculty moved into Red Square and stood ground that was hollow. Rand Ouellette sprang out of the library basement and under two h concrete platforms before standing beneath sky. Jude's Organic Chemistry class moved their chairs to the doorway, in his class doorway is a wall of glass. Then they moved side the building and found themselves under two floors of building. The quake was before the group settled. "I remember look out into the forest and thinking, is that a place to go?" said Jude.

"People who ran out of the buildings w just lucky that nothing fell on them," said N. Segawa, director of housing.

Five years ago some plan was in place response to an event like this. That plan was in the shuffle and there has been no office training or awareness program. "Not for the or four years," said Ann Daily, who took an off a few months ago that oversees the disaster planning for Evergreen, vice president of finance and registration. She decided to pass the responsibility to the previous office holder.

Chuck McKinny, director of residential life called for a thought-out and funded disaster plan in an e-mail sent to Les Purce, President of Evergreen. In response to this deficiency, Daily said that McKinney will get it. Kelley Smith's office of Lab Management will get funding to plan for chemical spills in the college labs. Just one week after the quake, all levels of

See QUAKE p. 8

PRSR STD
US Postage
Paid
Olympia WA
Permit #65

We are trying to decide whether or not we should keep our logo (please see above) for the rest of the year. Do you like it? Do you think it's ugly? Do you have an idea for a Cooper Point Journal logo?

Please stop by the CPJ office (CAB 316) or phone us (867-6213) or email us (cpj@evergreen.edu) with your suggestions and comments.

How to get involved

We have a number of meetings in order to better the paper. One issue we'd especially like student input on is whether or not we should keep our current clocktower-and-CPJ initials logo (see above). If you have an idea about what our logo — or in journalism-lingo, the "flag" — should look like, please come up to our office, which is located on the third floor of the CAB building in room 316. Our meeting times are as follows.

Story meeting
Monday 5 p.m.
Paper critique
Thursday 4 p.m.

Journalism and ethics forum led by CPJ advisor
Dianne Conrad
Friday 4 p.m.

How to contribute content

Turn in your story on a disk and printed out to Cooper Point Journal office CAB 316, or email your contribution to cpj@evergreen.edu.

Our deadline is Monday at 12 noon for that week's edition.

Indicate your name and phone number on your submission

Try to keep your story under 600 words. If you'd like to write more than that, please call The Cooper Point Journal at 867-6213 so that we can reserve you space.

Business
867-6054

Business Manager: Jen Blackford
Asst. Business Manager: Monica Festa
Advertising Representative: Ian Paden
Circulation and Archivist: Michaela Monahan
Distribution: Will Hewitt
Ad Designers: Nicholas Stanislawski, Lauren Storm

News
867-6213

Editor-in-Chief: Whitney Kvasager
Managing editor: Corey Poin
News editor: Erica Nelson
L&O editor: M.A. Selby
Photo editor: Adam Louie
A&E editor: Mike Tanner
Sports editor: Shasta Smith
Comics editor: Ryan Buck

Designers: Tyler Balliet, Wendy McNeal, Alex Mikait
Copy Editors: Gwen Gray, Moxang Miles, Edith Nelson, Jamie Rossman

Advisor: Dianne Conrad

The Cooper Point Journal is published 24 Thursdays each academic year, when class is in session: the 1st through the 10th Thursday of Fall Quarter and the 2nd through the 10th Thursday of Winter and Spring Quarters.

The CPJ is distributed free on campus and at various sites in Olympia, Lacey, and Tumwater. Free distribution is limited to one copy per editor per person. Persons in need of more than one copy should contact the CPJ business manager at CAB 316 or at 360-867-6054 to arrange for multiple copies. The business manager may charge 75 cents for each copy after the first.

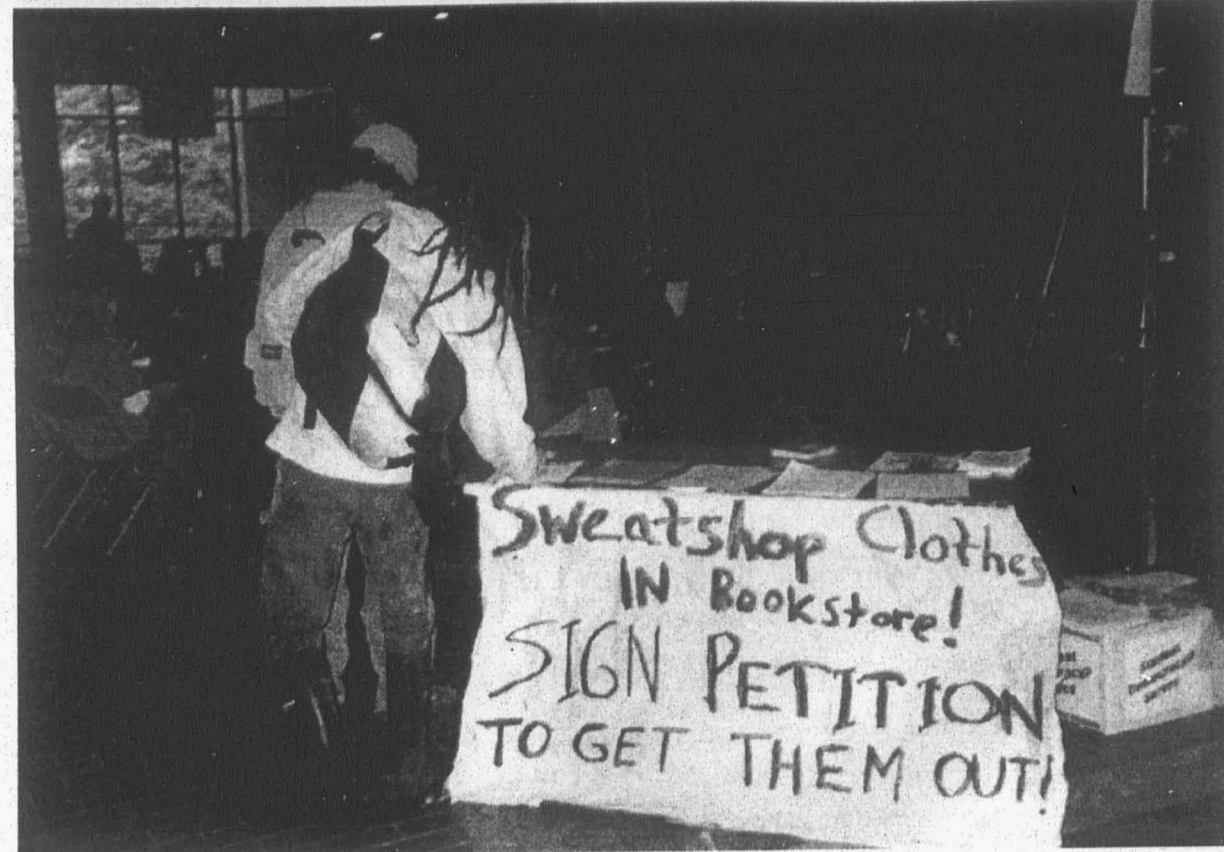
The CPJ is written, edited, and distributed by students enrolled at The Evergreen State College, who are solely responsible for its production and content.

Contributions from any TESC student are welcome. Copies of submission and publication criteria for on-advertising content are available in CAB 316, or by request at 360-867-6213. The CPJ's editor-in-chief has the final say on the acceptance or rejection of all non-advertising content.

The CPJ sells display and classified advertising space. Information about advertising rates, terms, and conditions are available in CAB 316, or by request at 360-867-6054. The CPJ's business manager has the final say on the acceptance or rejection of all advertising.

The CPJ's annual First Class is mailed First Class to subscribers for \$35, or Third Class for \$23. For information on how to subscribe, call 360-867-6054.

photo by Anna Smith-Lindall



A recent forum on sweat shop labor brought out the administration's lead-off hitters, namely: President Les Purce, Vice President of Student Affairs Art Constantino and former Vice President of Finance Steve Trotter. Student organizers, called Students Against Sweatshops, were pleading with the school to drop its affiliation with a monitoring organization called the Workers Rights Consortium and join a group called the Fair Labor Association instead. After two hours of talking the aforementioned administrators agreed to consider dropping the WRC affiliation, which they did a few days later. As a result, we are currently not affiliated with any sweat shop monitor. It seems that TESC, the New York Times' "bastion of liberalism," is still sweating the sweat shop issue.

Go Slightly West, young man.

Slightly West is Evergreen's literary magazine. "I seek lively, diverse, and succinctly eloquent literary and visual artworks from students staff, and alumni of TESC," SW said in a press conference yesterday. "I accept poetry, prose under 2500 words, photographs, and artwork that reproduces well in black and white. Feel free to test these limits; I am open to new representational forms."

To submit, please remove your name from your work and enclose a cover letter with your pertinent information, including a contact number or address. "Kindly enclose a SASE with the correct amount of postage if you want your work returned."

Slightly West is published twice during the school year. "Deadline for my spring issue is (no teasing, now) April 1. I want to make clear that when I am published, all rights revert to the authors and artists."

You can drop off or mail submissions to the following address.

Slightly West
CAB 320
The Evergreen State College
Olympia, WA 98505

Barrier-busting Lunch

On Wednesday, March 14, at 11:30 in the morning, there will be a luncheon in the TESC Library building room 4300 to celebrate TRIO Day. What is TRIO Day, one might wonder?

According to a press release, "for over 30 years America's federally-funded TRIO Programs have helped students to overcome class, social, cultural, and academic barriers." The release failed to mention what TRIO stands for, or what the programs actually do. Scholarships? Grants? Presents? We cannot say.

The luncheon features Upward Bound and KEY students, TESC faculty and staff, Les Purce, the TESC Board of Trustees, members of the Legislature, as well as keynote speaker Rev. Dr. Leslie Braxton of Seattle's Mt. Zion Baptist Church.

The Correction:
Last week's DTF info box was replete with errors. Among them, Nancy McKinney was cited as heading a DTF. McKinney has not worked at Evergreen for over a year.

Call to Arms, er...Artists

Suzi's Coffeehouse, at the Java Flow, is seeking artists, poets, and musicians to post and/or perform their work. "If you are interested," said Suzi, "please contact Suzi at (360)705-1867."

Also at Suzi's and the Java Flow, is Board GameNight and Open Mic Night. What night? Well, Board Game Night is Tuesdays from 5 P.M. to 9 P.M. Does that answer your question? What about Open Mic Night, you ask? Oh, well, Open Mic Night is on Saturdays, sign up begins at 6:30 P.M. You know, I've played a few board games in my day. I enjoy Mouse Trap and Risk. And Uno.

Intern wanted: Yes, that's right

The Women's Resource Center is hiring for spring quarter and the next academic year. The internship will involve group work and collaboration.

"This is a great opportunity for those interested in community organizing and involvement," says the flyer. The application deadline is Monday, March 12 at 5 P.M. Inquire with Mary Craven at extension 5222.

Students march to Police Services

Yesterday approximately sixty students held a silent march to police services. The march was called in response to the assault in housing earlier in February. The marchers carried banners saying "I called 3 times, no one came," "Next time take me seriously," and "I don't want a next time," among others.

The procession began at 1 P.M. at the CAB, figure-eighted Red Square, and finally came to Police Services, where the banners were taped up on the outside walls. The marchers were greeted by police chief Steve Huntsberry and two other officers, and there were no altercations. The marchers dispersed after an organizer said, "If you feel we have accomplished something, you can leave right now..."

Afterward, the march's organizers held a petition-signing in the CAB lobby. Steve Huntsberry and V.P. of student affairs Art Constantino spoke to the organizers briefly at that time.

Class heads to China

On March 21, 2001, a group of Evergreen students and their teacher will be traveling to the Teacher's College of Wenzhou, China. Students from both colleges will engage in discussions, presentations, workshops, and other learning opportunities. Through these and other informal interactions, the students hope to gain a better understanding of the worldwide practice known as teaching. As Meghan G., a student from Evergreen, put it, "Teaching is universal in human experience, and sharing helps all to understand the different ways we as humans think, feel, and learn."

The Evergreen students are enrolled in Arts and the Child, a class that focuses on child development and how art is influential in the process of literacy. Through illustrations, puppetry, and poetry, these students are learning innovative and engaging ways to teach reading. These forms of artistic expression will be a basis for exchange during the trip.

Funeral for ex-Fine Host employees

By Dori Horowitz

On January 11, 2001, the Evergreen Food Service Workers (under the Fine Host Corporation) won union representation under the International Longshore and Warehouse Union's local 47. Since that day, over a dozen workers have been fired, laid off, or quit due to drastic cuts in hours, corporate policy inconsistencies, and unbearable working conditions. The vast majority of remaining workers have had their hours cut and are now expected to do extra work in less time with no extra pay.

In a workforce consisting only of about 55 people, we have lost 25% of our fellow employees. Please help us mourn our losses on Tuesday, March 13th, as we hold a mass funeral procession to commemorate those workers who are no longer with us. The march will begin shortly after 11 A.M. in Red Square and will proceed through the CAB building. There will be eulogies spoken, drumming and collection jars (to aid those who now can't pay the rent). Please wear black armbands on Tuesday to show your support for these Fine Host employees. Thanks for your support.

The procession began at 1 P.M. at the CAB, figure-eighted Red Square, and finally came to Police Services, where the banners were taped up on the outside walls. The marchers were greeted by police chief Steve Huntsberry and two other officers, and there were no altercations. The marchers dispersed after an organizer said, "If you feel we have accomplished something, you can leave right now..."

Afterward, the march's organizers held a petition-signing in the CAB lobby. Steve Huntsberry and V.P. of student affairs Art Constantino spoke to the organizers briefly at that time.

Add to the library; add to your wallet

The Friends of The Library are sponsoring a contest for students to suggest any addition to the library collection up to \$2,000. Additions could be books; media such as music, CD's, film, or video; rare books; an under represented author or genre; reference materials; maps, etc. Winners get a hundred bucks!

Any currently registered student at TESC may enter. Entries must be in writing, no longer than 2 pages, and placed in the entry box located in the Library Reference area. Please be as specific as possible when making your suggestion (for example, list specific titles you want us to buy). Students may enter as many times as they wish (with different ideas for each entry).

Please include with your entry your name, address, and the best way to be reached. All entries are due April 15. Winners will be announced at Super Saturday and presented with a \$100 check.

Suzi's Coffeehouse; a place to play

Are you an artist in need of a venue? Suzi's Coffeehouse at the Java Flow just may be the place for you.

Visual artists, poets and musicians are all encouraged to contact Suzi about performing live or displaying their work in this charming, high-traffic location. For more information, head to a phone near you, and call (360) 705-1867.

Culture comes to Tacoma Campus

Internationally acclaimed pianist Dr. William H. Chapman Nyaho will be headlining "A Musical Journey Benefit for Phoebe House" at Evergreen's Tacoma Campus next week.

A native of Ghana, West Africa, Nyaho is a graduate of Oxford University and the Conservatoire de Musique de Geneve, Switzerland.

He will be performing with gospel organist Dr. Ruth Evelyn Barnes-Kelly.

General admission seating costs \$25.00 per person. All proceeds will be donated to the Phoebe House Association, a non-profit group for homeless women and women with children. The fundraiser will begin at 6:30 p.m. on Friday, March 16th, 2001.

eww gross nasty LICE

Does your head burn and itch like the fires of hell? Do you and your loved ones have little white bugs jumping all over you? Well my friend it sounds like you've got yourself a lil case of head lice.

What should you do to kill your new found buddies? First you need to head out and buy some poison death shampoo like Rid or Nix. Take a shower using your usual soap and shampoo, and dry your hair thoroughly. Slather on some bug-killin' shampoo, making sure to use your bare hands to rub it into your scalp as much as possible. Wait about 10 minutes, wash it out,

and then have a friend use the special "nit comb" that comes with your death shampoo to check your entire scalp for critters and nits. You must inspect every hair! The nits are attached to the strands strongly, so put some muscle into it. According to the friendly handout from the friendly Health Center, "The insecticide will stay in your hair & scalp for several days to kill any new lice/nits that you may be exposed to." Yikes!

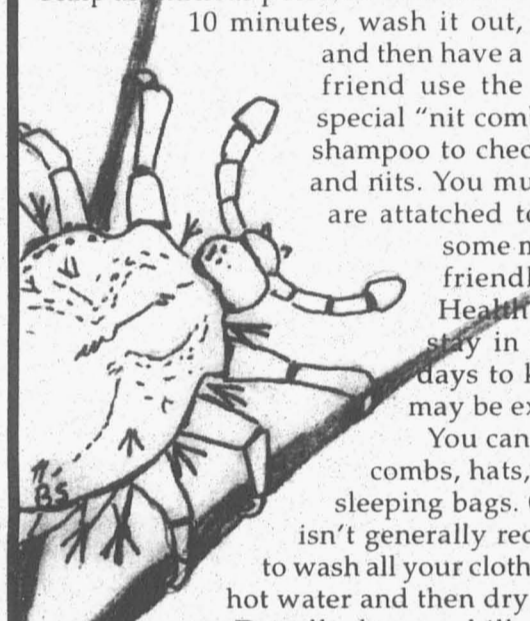
You can get lice by sharing brushes or combs, hats, scarves, scrunchies, beds, and sleeping bags. Getting freaky with dirty folks isn't generally recommended, either. Make sure to wash all your clothes, towels and bedding in really hot water and then dry them on high.

Dreadlocks are chill places for a louse to take up permanent residence. The only way to ensure that they are completely gone is to cut them off.

So, now that your head is full of bugs and none of your friends will come near you, what should you do? The health center has some titilating options for a night of unadulterated lice-infested fun. "Pick a night where everyone can get together for household lice date. Everyone should treat their body, their clothes and the environment all at the same time. It can be a fun household bonding experience!" Oh, joy of joys.

SYMPTOMS

- It itches! It itches! Will it ever stop itching!?!
- Small, clear nits (eggs) shaped like elongated teardrops stuck to the hair shaft along the hairline.
- Yucky "clear brown/amber color" critters crawling, crawling, crawling all over your head!



REDEFINE YOUR WORLD!



Peace Corps to visit
The Evergreen State College
Wednesday, March 13

Information Table: 10:00 am - 3:00 pm,
Campus Activities Building (CAB)

"Redefine Your World" video and Q&A:
4:00 - 5:50 pm, Library 2221

Learn about volunteer opportunities overseas.
View slides taken by Returned Peace Corps Volunteers and get a glimpse of their experiences.
Act NOW to redefine YOUR world after graduation.

(800) 424-8580 - Option 1
Visit our web site at www.peacecorps.gov

Paint-4-Fun
Ceramic Painting Studio

We have a variety of Bisque, Paint, Supplies, Stencils & Classes! No sitting fee. No appointment. No experience necessary!

360 786-5719
400 Cooper Point Rd. Capitol Village Suite #27
ACROSS FROM SAFEWAY

Vox Populi

THE VOICE OF THE PEOPLE

"What do you think of all the media's earthquake coverage in the past week?"

"I lived through it. Not too much damage. I read one article about it in the Seattle Times about an old lady losing her glass egg collection. No big deal."
Martin Tran
 Senior



"Living in inner city Seattle, it was pretty devastating, and I kind of understand the media coverage, because at the time, it felt like the end of the world. We're really fucking privileged—I can remember St. Helens. I have a 7 year-old and was really worried, and they said, 'The kids are OK,' for 5 hours."
Heide StrangeSky
 Junior



"I didn't watch the news, but anytime you sensationalize disaster, it just sends a wave of paranoia out through the community."
Mara Collins
 Junior



"I thought it was really lame--the media covered all Seattle. Oly didn't get shit except the capital. Especially the t.v. and national news, because who reads the Olympian? Some of the photos [the media] took made it look like the rubble was bigger than what it really was, too."
Sonja Tachell
 Senior



"It was OK. The national media paid it its due and the local media is doing what it should. I think it's about what you'd expect."
Karl Hack,
 part-time student



Sexual Assault: Group offers support for survivors of violence

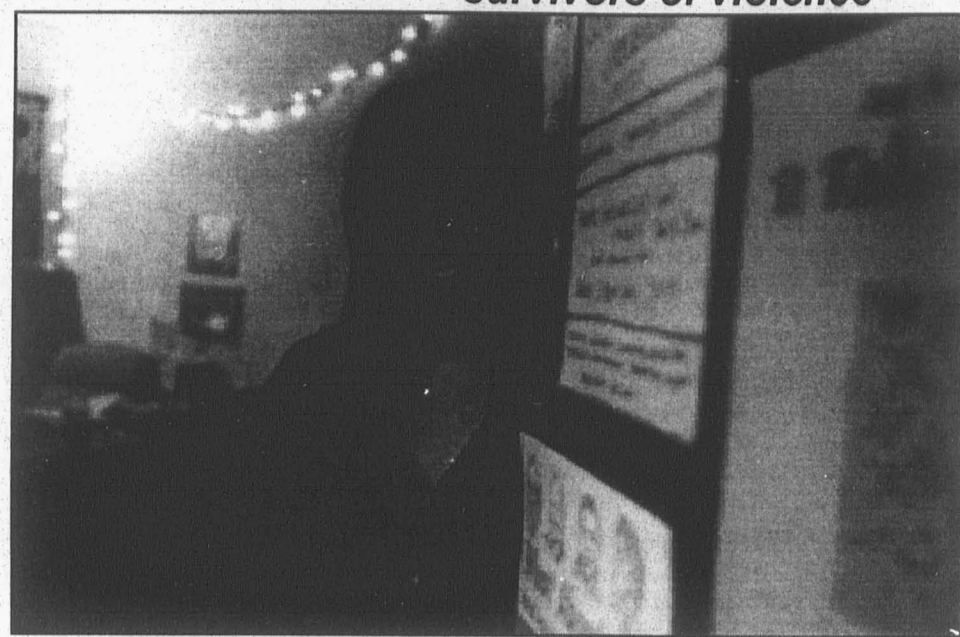
By Chandra Lindeman

Hi. My name is Chandra Lindeman, and I am the Sexual Assault Prevention Coordinator for the Evergreen State College campus. I am writing this brief introductory article to inform the Evergreen community of the services that the Office of Sexual Assault Prevention offers.

This office offers education, information, resources, referrals, and advocacy including medical, legal, and emotional support for survivors of violence, as well as for loved ones of survivors. Although the title of this office and my position includes only sexual violence, I started to offer services to violence survivors of any type—including sexual, relational and stranger violence, and hate crimes.

If you have experienced violence and you need support or information, you can call the Office of Sexual Assault Prevention or stop by to see if I am available. I am generally in my office on Wednesdays and Fridays from 9am to 3:30pm. All services through this office are free and confidential. This is a place that you can call or come to if you want to know what your options are as a survivor. Also, if you are confused or you just need to talk, I am available. In addition to mv services, we currently have a male intern who is available for the winter quarter. His name is Joshua Eberle, and he is available by phone for information and support. Joshua is also working to challenge men to stop all forms of oppression and to make positive individual and social change in themselves and their communities.

If the Office of Sexual Assault Prevention is not the place for you to have your needs met, we will be sure to connect you with someone who can. If you choose to not contact this office, please talk with someone—a



Chandra Lindeman stands in the doorway of her office. by Adam Louie

friend, a counselor, a family member, or a teacher—the violence was not your fault, and you deserve support.

As many of you are aware, violence is an ongoing issue on our campus. The most important facets of my job include supporting survivors of violence and ending violence on our campus. It is important that each of you know there is help available if you are a survivor. It is also important to me that each of you know that I am working along with students and other key people on campus to end violence. As the Coordinator of the Sexual Assault Prevention office, I am seeking to change the name of this office to include a focus on violence prevention in general. I am also hoping to bring in additional resources for this office so that it can truly meet the needs of our community. If you have ideas, concerns, questions, or would like to work toward ending violence in our community, please contact me. There are many ways to get involved.

For More Info

- There are a number of resources available to you on campus including:
 - Office of Sexual Assault Prevention, Chandra 5221
 - Intern of Sexual Assault Prevention, Joshua 5517
 - Police Services on Campus 6140
 - Counseling Center on Campus 6800
 - Coalition Against Sexual Violence 6749
- There are also resources available in the larger Olympia community such as:
 - SafePlace, Sexual and Domestic Violence Prevention 754-6300
 - Crisis Clinic, Information and Referral 586-2800

Evergreen VS. Reality

by Jayne Kaszynski

The gulf between theory and reality at Evergreen is most evident in the General Education issue. Students come here for an alternative education, based on concepts of cross-divisional learning and the possibility of controlling their own education. When they get here, however, they face a system that makes it hard for students to experience either. Cross-divisional classes rarely move outside the focus of faculty planning units, which lead to "cross-divisional" classes in subjects like history and sociology, or writing and literature. Truly cross-divisional classes, such as those on art and environmental science, or computer theory and writing, are hard to find. The idea that Evergreen students can plan their own education is a sham as well. Students who have come out of traditional learning situations—generally a bad model for true "education"—are expected to suddenly understand what they want to do and how to do it on their own. Faculty that are supposed to talk to students about their education and future plans

rarely ask and even more rarely have concrete suggestions to offer. Furthermore, it is impossible for students to plan their education when they have no control over what classes are going to be offered and only know a year in advance what classes may be offered. Once students receive their catalogue, they still have to contend with programs that are dropped or have pre-requisites that they can't fulfill. Almost every student I've spoken to has wanted access to a variety of classes; access that they haven't found at Evergreen. The General Education DTF has worked on curricular changes that would improve student access not just to math classes, but to all types of classes, making it possible for students to experiment with different subjects. Right now, students are forced to dive in for a full 16 credit quarter of something they're not sure of their own interest or ability in, simply because there aren't enough beginning, cross-divisional classes to allow them to try a little of different subjects. There's been a lot of confusion about what the DTF proposal

actually does. However, the body of the proposal is very simple. Right now, Evergreen is run by teachers who are split into "planning units." Planning units split the faculty into the categories of Culture, Text and Language, Environmental Studies, Expressive Arts, Scientific Inquiry, and Social Science. Faculty within these planning units then plan programs together. Present curriculum requires 40% of each planning unit to teach CORE or All-Level (i.e. open to all students regardless of year) classes—basically, beginning level classes. The other 60% teach in various other programs (mostly upper division) with little to no restrictions on what type of class it is or how long it runs. The DTF proposal only changes the first 40% who are already teaching CORE and all-level classes. The 60% that are unrestricted and teach mostly upper-division classes do not change. Hence, this proposal doesn't even touch the majority of Evergreen's classes and faculty. Furthermore, the changes to the bottom 40% are minimal, and aimed at solving two problems at the same

see GEN ED on page 20

Purple swim trunk travesty

by Jen Blackford

It's a well-known saying that you should be careful what you wish for. It's an even more well-known fact in my family that when I wish for some excitement in my life, bad things happen.

Not that I'm saying that I'm responsible for anything. It's just that my life vacillates between moments of high drama and great boredom.

Take this double edition of blotter. True, we did have a major catastrophe (according to my sources) occur this week. But can this make up for all the fire alarms, stolen bikes, and lack of case reports that plague this week's blotter?

The answer is, of course, no, since once again (like the police car getting stolen), I have been scooped by seemingly everyone out there.

So be prepared for a blotter that is mildly monotonous and rather unexciting. In other words, it's been a pretty slow two weeks. Except for the natural disaster.

On with the madness...

Tuesday, Feb. 20
 10:42 a.m. An employee is injured at the CRC. A dark portent of things to come?

3:50 p.m. Someone's bike is stolen from K-Dorm. How inventive.

4:21 p.m. A person working in a parking booth is approached by a man in a gray hooded sweatshirt and purple swim trunks. He told her he was "modeling" for her and asked how he looked. Instead of being impressed by his sartorial acumen, the attendant is mildly uncomfortable and becomes more so when he asks her to open the window. "She noticed that the suspect had a large erection." The man leaves when she calls the police. To make things even grosser, witnesses later say that at one point, he was naked from the waist down.

Wednesday, Feb. 21
 2:18 a.m. Ah, the grandeur of a fire alarm that involves multiple floors in A-Dorm with "water flow" activation on the 6th. Is anything more splendid? Perhaps the eruption of Mt. Vesuvius, but this runs a close second.

3:33 a.m. Shockingly, drug paraphernalia is found. In an exclusive interview, Evergreen student Erica Nelson gasped and said, "No way," proceeding then to faint in her chair. Because, you know, she's easily shocked.

Thursday, Feb. 22
 11:53 a.m. The combination of a nicotine patch and a bronchial inhaler does not sit well with someone. Luckily, this person is all right.

Friday, Feb. 23
 5:38 p.m. A student sticks two boiled eggs inside his sweatshirt front pocket and proceeds to walk out without paying for them. When asked why he did such a thing, he says that he put them in his front pocket to prevent them from breaking and just

forgot to pay for them.
 11:29 p.m. Molson's may go down smooth with some people (Canadians), but for one student, it has a bitter taste indeed. For you see, he was arrested for MIP.

Saturday, Feb. 24
 A bicycle is found in Housing. This means joy for at least one person and sorrow for me, since it's the only thing that happened today.

Sunday, Feb. 25
 1:14 a.m. The blotter editor would like to give you this poem, inspired by today's case of reckless burning and the works of William Blake:

Fire, fire, burning bright,
 in the day or in the night,
 can usually give me lots of fun,
 but I have no facts, not even one.
 2:35 a.m. Someone else gets drunk in A-Dorm.

Monday, Feb. 26
 Thieves abounded on campus, as bicycles, keys, and credit cards went missing. Happily, food in the Deli remained apparently untouched and crime-free.

Tuesday, Feb. 27
 Nothing happened today.

Wednesday, Feb. 28
 Something happened today. For more details, see CNN, MSNBC, your local paper, or any other fine journalistic establishment (CPJ), as sadly I do not have a blotter page or any case reports pertaining to what occurred today.

Thursday, March 1
 12:57 a.m. Things get back to normal rather quickly as someone burns food in D-Dorm, setting off a fire alarm. It's nice to see that some things can be counted on.

1:13 a.m. Some people cope with trauma by getting counseling. Others eat a lot of comfort food and listen to country music. But in A-Dorm, it is dealt with loud noises, things on fire, and the occasional flight of a piece of furniture.

Friday, March 2
 8:10 a.m. Apparently, something gets stolen today from the bookstore. Please, in the name of all that's good and right, let it not be the Britney Spears CD.

8:18 p.m. A fire alarm goes off in T-Dorm. That's it, people. Either learn how to cook or hide your pot better.

Saturday, March 3
 12:36 a.m. Two people, their dogs, and a van park in F-Lot to spend the night. Needless to say, they don't get to stay there.

1:13 a.m. Drinking and driving lands at least one person in trouble, with the possibility of another one hour later.

Sunday, March 4
 More people drink, more people get busted, and yet another person evidently hasn't mastered the culinary arts.

Monday, March 5
 9 a.m. A harassment case occurs, but I have no report on this.



THE GREENER FILES

MARCH 2001

QUESTIONS FROM OUR COMMUNITY

Where have you been, Police Services? That is the question I have been hearing from our community. Remember, last year we initiated a column called "The Greener Files." It was originally introduced as an outreach to our community. It was a test run, and the feedback was interesting and, for the most part, positive. Our community desires to hear from us in that format again. This past year, we have been working on a police web page, which can be found within the Evergreen Web directory. As soon as it is completed, you will be able to access selected portions of "The Greener Files" within our Web page. After entering our Police Service icon, look for "The Greener Files."

Some of the information you will find in our column in the future: traffic and crime stats, biographies of our employees from parking, dispatch and police areas, messages from the Chief, and articles/information submitted by various officers/employees. We also hope to add some unique items for fun and entertainment. Because education is a very important aspect of the column, we hope to include informative material that will be useful to our community. There will also be updates regarding what our officers are doing as far as training and general happenings in police services.

If anyone has any suggestions of what they would like to see in the column, please feel free to contact me with your suggestions. We hope to contribute weekly to the column. Police Services would like to thank Barry Joynes for his time and creativity in assisting with our new Web page. It is still under construction and will be for some time until we get all the information that we would like to have on it.

Thank you,

Community Policing Officer
 Pamela K Garland E9
 Ext. 5157 or email
 Garlandp@Evergreen.edu

There has been concern from our community that our officers are setting up speed traps on the parkway to catch drivers. To address this issue Corporal Neely was asked to explain all the enforcement. We can assure you that we do not utilize speed traps in our jurisdiction, but this may help in explaining why you may be observing more enforcement on the roadways. The speed and traffic enforcement is focused in locations that have been normally high accident rate areas.

Since starting the traffic enforcement in these areas, accidents have declined significantly, resulting in a decreased number of fatalities, injuries, and serious property damage. This has also made the Parkway and other major roads a user-friendly area. I have been approached by numerous bicyclists and pedestrians thanking me for monitoring these areas. It helps make drivers aware of the posted speed limits and other hazards on these roads. It has also helped the wildlife in these areas. The number of vehicle to animal incidents in these areas has declined dramatically. I would like to thank those officers who have been a part of this activity and continue to make the roads at Evergreen State College a safe place for vehicles and pedestrians.

UPCOMING INFORMATION

On Saturday, April 21, Evergreen Police Services will be sponsoring a child safety restraint clinic. In a few weeks, an article will appear in CPJ about this issue. You may have seen a few Tescier messages about this or read the Olympian a few weeks ago concerning seat belts and booster seats for children. It is our desire to inform our community that this is an important issue for you and your family's safety.

Officer Garland is recruiting students for assistance with the weekly CPJ articles. Please contact her at Ext. 5157.

FREE LUNCHES!!!! That should grab your attention, you starving students. Chief Huntsberry and Officer Garland are working on a new program that will include a lunch date with an officer or the Chief. The idea is to hear your input on police services, etc. We will keep you posted.

Corporal Neely

DTF Directory

compiled by Erica Nelson

New DTF! The Human Resources DTF has just been formed. It will be a vehicle to examine areas of concern to employees on campus. The HRS DTF has been charged with looking into many significant issues surrounding exempt and classified employees. The critical issues include recruitment and retention of employees, an analysis of current Human Resources data and information systems, and a review of possible use of the Banner Human Resources module. The members are Meredith Huff, Chair; Karen Durant; Kelly Smith; Betsy Diffendal; Jose Dominguez; Ed Rivera; Patty Barnes; Lorrie Moore; John Carmichael; Maia Bellon; Randy Cravey. Efforts to recruit faculty and staff will only intensify in the coming years resulting from three primary factors:

1. many of our faculty and staff are reaching retirement age;
2. the college will continue to add new positions to support a larger and growing student body, and;
3. the highly competitive labor market resulting from a strong economy.

Get more info at their website <http://www.evergreen.edu/user/HRS/df/home.html>.

Food Services DTF—The objective for the DTF was to "create a set of recommendations regarding what kind of a food service program we should put in place for Fall 2001" and focus on the actual development of specifications and any other documents needed to proceed during spring quarter. Utilizing previous DTFs' work, prior survey work, other colleges' and universities' expertise, the National Association of College and University Food Services, local businesses and resources, as well as professional consultants, the group researched nine different models for food service this past fall. The DTF will be forwarding their recommendations this week. Please look for an insert in next week's CPJ for more information. Here is the initial membership: Chuck McKinney (Committee Chair), Alan Nasser, faculty Beckie Kjer, conference services manager Pat Labine, faculty Kathleen Haskett, purchasing manager Piper Kapin, food services liaison Mike Arnow, student Russell Garafalo, student Kevin Anderson, student Shoni Schlotzhauer, student Patrick Rogers (Turtle), student/ Fine Host employee Robin Herring, environmental health and safety officer Peter Kardas (ex-officio). They meet on Mondays at 3:30 in Lib 2130—contact Piper Kapin, Food Service Liaison, at ext. 6501.

Graduation Planning—help plan June 2001 events; contact Steve Hunter at ext. 6310

S&A Fee Review Board—Helps decide the allocation of student activities funds (see article this page). Meets Mon./Wed. 4-6pm; contact Jaime Rossman at ext. 6221.

Student Conduct Hearing Board—Hears students appeals of grievance officer decisions; contact Art Costantino at ext. 6221.

Faculty Hiring Committees—Screening and interviews for all positions; contact the Faculty Hiring Office at ext. 6861.

Enrollment Coordinating Committee—The Enrollment Coordinating Committee (ECC) meets alternating Fridays from 10-12 in the Enrollment Services Conference Room. The committee's members include the Assistant to the Dean of Enrollment Services, Coordinator of Student Services—Tacoma Campus, Curriculum Dean, Dean of Enrollment Services (chair), Dean of Student Academic Support Services, Director of Academic Advising, Director of Admissions, Director of Financial Aid, Director of Housing Faculty Representative, Registrar, and Vice President of Student Affairs. Topics for the remainder of the year and beyond include monitoring conversion to the new student record system (Banner), reviewing financial aid packaging philosophy, discussion of new recruitment publications/ mailings, Web page design, review of student recruitment strategies, review of integrating communications and marketing DTF recommendations, and review of summer registration process for Fall Quarter; contact Steve Hunter Interim Dean of Enrollment Services at ext.6310.

Drug and Alcohol Abuse Prevention—Reviews and develops policy and prevention efforts; contact Liz McHugh at ext.6200.

Campus Land Use—Meets on the last Monday of every month in the Facilities Conference room (Lab II, room 1250) at 7:30 a.m. The committee is made up of eight faculty and staff members and two student members. The students are Daniel Moses and Moriah Eusitce, who can be reached at tristedelnoche@hotmail.com. They also have a website, which has all

their contact information, agenda, minutes and application forms for land use proposals. In accordance to the Campus Master Plan, the CLUC reviews all land use proposals for the following: consistency with educational mission of the college, consistency with the Policies and Procedures of the Master Plan, suitability with the use criteria for specific land areas of the campus, and environmental sensitivity and SEPA compliance if required.

Deadly Force Review Board—Review incidents where deadly force is used or threatened; contact Art Costantino at ext.6296.

Space Management—Policy and allocation of space quarterly and as needed; contact Michele George at ext. 6115.

Infraction Review Committee—Hears parking ticket appeals monthly for two hours. They decide to either waive, uphold, or reduce each ticket heard, and they hear an average of 100 appeals a month. Made up of two students, a classified staff member, an exempt staff member, and a faculty member. There is also a non-voting secretary who is a student; contact Susie Seip ext. 6131.

Communications Board—Provides guidance on student media issues twice quarterly; contact Tom Mercado at ext. 6220.

Health and Safety A/C—Promotes worker health and safety; it meets monthly for two hours; contact Michele George ext.6296.

American Disabilities Act Compliance—Evaluates progress and accessibility; contact Linda Pickering at ext. 6364.

Student Rep Selection Committee—Advertise and assist in choosing student trustees—no contact info available for this committee.

Hiring Priorities—Set priorities for hiring; contact Nancy Taylor at ext. 6398.

Human Subject Review—Advise and approve any sort of human subject research that happens on campus. Help insure subjects' privacy, etc. No students are involved with the committee now, but if you are interested in this, contact Lee Lyttle at ext.6678.

help decide who the 2001-02 editor will be

TOMORROW (Fri., Mar. 9) **4pm CAB 316**

Getting Ready Forum what do you want to depend upon the editor to do and be as the coordinator of the Cooper Point Journal organization and editor-in-chief of the newspaper of the students? The forum will conclude with devising questions the editor candidates will be asked Friday, March 16, at interviews by students.

Friday, March 16 4pm CAB 316

Interviews Students will interview each of the two editor candidates using questions that were devised Friday, March 9. This will take about 90 minutes.

Friday, March 16 6pm-ish CAB 320

Deliberation Students will discuss the strengths and weaknesses of each candidate and attempt to reach consensus on a recommendation to the CPJ advisor on which candidate to appoint editor for 2001-02. This can take up to four hours.

Where to find out about each candidate: The application packet of each candidate is on the bulletin board across from the CPJ, CAB 316. The two candidates are WHITNEY KVASAGER and COREY PEIN.

YOUR ART = \$200!

Enter the 2001 graduation t-shirt contest by submitting your artistic design (no larger than 8" x 14") to LIB. 1221. Winner of the "tee" contest will get \$200 and their artwork on hundreds of t-shirts!

Use the 2001 class motto:
Liberation through education
or make up your own theme!
Students and non-students may enter.
DEADLINE: MARCH 23 @ 3:00 pm
Questions? Call 866.6000 ext 6310.

Vics Pizzeria

233 DIVISION ST NW (360) 943-8044

Ana makes a lovely vegan sauce!

Environment vs. Economic Growth: Can They Co-exist?

Commentary by Andrew Bucher

Economic growth fosters many benefits for a society. Markets get wealthier, technology gets more cutting edge, and the pressure on the environment is reduced. Rising incomes lead to more willingness and ability to fund a cleaner and healthier environment. Economic growth generally leads to environmental improvements, because people with higher incomes are willing to pay more for environmental quality.

Once a person's income surpasses the point of just getting by, they are financially more willing and able to participate in the reduction or avoidance of environmental degradation. The quality of the environment will actually improve. As nations like the United States, Canada, and most European nations matured into wealthy countries, the frequency of individuals advocating for the environment increased dramatically. Businesses and nonprofit organizations have set aside areas to protect the preservation of plants and animals.

Donald Coursey, an environmental economist, has concluded that there is a high degree of elasticity between income and willingness to pay for environmental causes. In industrial nations, Coursey has found the elasticity for the demand of environmental

quality to be about 2.5. If an industrial nation experiences a 10% increase in income, one should expect a 25% increase in the citizens' willingness to pay for environmental expenses. This is truly remarkable since the elasticity for luxury cars like BMW and Mercedes-Benz is about 2.5 as well.

Improvements in technology correlate positively with the quality of the environment. In the United States, technological advancements were themselves cleaning the environment before environmental laws were passed. One example is the beverage industry, who wanted to increase profits by reducing costs. These companies found ways to reduce the amount of metal used per can by using lighter and recyclable metal. This change in the makeup of something so simple as cans led to less ore being mined and processed; therefore, less energy was needed to transport both the raw and the finished products. Pollution was reduced, and the beverage companies profited from it.

There is one undeniable fact: as nations get wealthier, the solid wastes per capita increases as well.

The relationship between safe drinking water and income is positive. In a nation with a per capita income of \$1,000, about 40% of the population will be without safe drinking water; whereas a nation with a per capita income of \$10,000 reduces the percentage of the population without safe drinking water to only a few percent. Furthermore, the correlation between particles in the air and income is encouraging. A wealthier nation will pave roads and industrial processes will become more efficient by emitting smaller amounts of waste. There is one undeniable fact: as nations get wealthier, the solid wastes per capita increases as well. However, a wealthier nation will adopt programs and policies that will restrict or recycle the solid wastes. More funding will go toward research and development with regards to recycling.

The question is, is economic growth harmful to the environment? The answer is clear: not only is it not harmful, but it is to the environment's advantage!

No fee increase

By Jaime Rossman

The Evergreen Services and Activities Fee Allocation Board deliberated for nine hours this week before finalizing its recommendations for allocating almost three million dollars of student fees over the next two years. These fees provide operational budgets for S&A Administration, KAOS, the CPJ, the CCC (Child Care Center), and RWA (Recreation, Wellness, and Athletics), as well as supporting more than sixty funded student groups on campus.

For the first time in S&A history, this year's Board will NOT be requesting an increase in student fees during the next biennium. By rearranging distributions of funds, the Board has been able to balance our budget at current fee levels, even though costs such as minimum wage and electricity prices have risen over the

past two years.

The Board has allocated additional funding to several organizations to allow new services for students. Specifically, the Board was able to grant much of a request for funding to increase the CRC's hours of operation. Expect to see the CRC opening earlier during the next two years. The Board also granted a request for a new computer for KAOS and approved a request for more summer staff for the CCC.

Next month, the Board will begin hearing student group's requests for funding for next school year. We will also be hiring next year's Board Coordinator, who will be responsible for recruiting and facilitating next year's Board. For more information about the Board's deliberations, available positions, and S&A at Evergreen, drop by CAB 320 or call x6221.

MARDI GRAS

continued from the cover

Samaritans were more willing to risk bodily harm to themselves than 350 SPD robocops is an outrage.

The whole night was emotional on other levels as well. After actually being within a bullet's range, I'm sorry that I ever took for granted that youngsters in this country grow up near gunfire. It's scary as hell to hear and see a gun go off. The power is perfectly clear when the blast occurs—you have none of it. I also feel guilty, of course, that I was alone, filming the insanity, and was too scared and scrawny to step in front of punches and pistol whips and bullets and chains to help helpless human beings.

A person was shot, another died, 42 people ended up at a hospital, and at the very least 30 more got hurt. SPD Chief Gil Kerlikowske has said he takes "full responsibility" for the Mardi Gras madness. I can respect police officers just as much as the next guy when they are willing to "protect and serve." The SPD did neither of those things under Kerlikowske's watch. They stood by as people were beaten and robbed by thugs.

SPD, under the direction of Kerlikowske, are a bunch of bogus bastards and too many of the 4,000-some people in Pioneer Square last week are berserk bastards—one no better than the other. Individuals and groups wandered through the crowd, and random beatings followed by stompings sprang up over and over again. Worse yet, the police knew what was happening.

Chief Kerlikowski is a chump. I'd like to see him apologize to the citizens of Seattle he works for and the officers who work for him but who couldn't help people because of his orders. I'd like to see the morons who unleashed the senseless rage on each other and their victims strung up.

Seattle's mayor Paul Schell, it should be noted, is also a spineless runt. Where was Schell as his city gave way to vicious violence? At home doing nothing. Josh Feit of *The Stranger* points out that Schell doesn't even think Seattleites are responsible for the violence or that the SPD's inaction was problematic. The one-term wonder, again, makes us wonder.

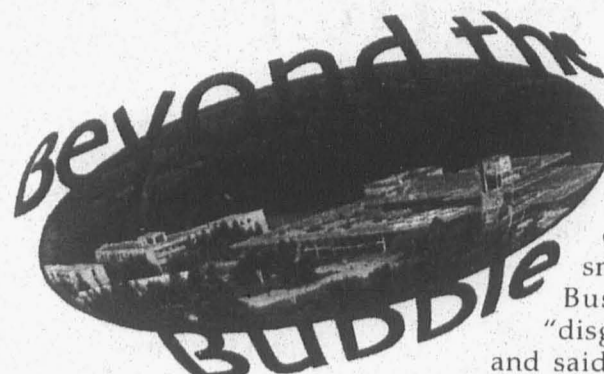
Pioneer Square started to crumble late Tuesday night, not Wednesday morning. Other than that, I can't make heads or tails of it all.

QUAKE

continued from the cover

administration promise a plan with contingency and training. Daily said a simple draft would be ready by next Monday and that they would move forward from there.

Already, Segawa has asked housing's Resident Assistants to change student reaction to run while the earthquake is still fresh in everyone's mind. "People should not under estimate how far building shrapnel [glass, concrete and steel fragment] will go," said Segawa. "You think it's safe but you don't really know."



Beyond the Bubble
By Brian Frank, Graham Hamby, Stephen Karmol, and Vanessa Lemire

This week's top stories:
New Weapon
Foot And Mouth Disease
Discovered In Europe
Taliban Orders Statues Destroyed

Domestic
The Pentagon unveiled a new weapon for use in crowd control last week that uses electromagnetic waves to disperse crowds without killing, maiming, or military officials say, even injuring anyone slightly. The weapon fires bursts of electromagnetic energy capable of causing burning sensations on the skin of people standing as far as 700 yards away. The weapon, which will probably not be ready for deployment by troops for at least five years, has already cost taxpayers \$40 million. (more at /www.nytimes.com/)

ABC/Washington Post polling last week found President Bush with an approval rating of 55%, the lowest for any president since Dwight Eisenhower this early in a presidential term. (more at /dailynews.yahoo.com/)

Napster began filtering copyrighted material on its service last week in response to a court order mandating that Napster remove such material from its service. Popular musicians such as the Beatles and Jimi Hendrix can no longer be found on the site, with more musicians soon to follow. Napster's free and unfiltered online music trading service, which has been used by hundreds of thousands around the world, now plans to transition to fee-based services in the near future. (more at /dailynews.yahoo.com/)

Many Senate Democrats appear to be reconsidering their support for campaign finance legislation that would ban "soft money" due to the massive impact it would have on the party's finances, which are already significantly smaller than the Republicans. Soft money donations are used to advertise for specific campaign issues for a candidate. Both major parties received nearly \$250 million in soft money during the 2000 election. (more at /www.washingtonpost.com/)

A 15-year-old high school freshman opened fire at his high school in Santee, California last week, killing two students and wounding 13 other people, allegedly smiling as he killed. President Bush called the shooting a "disgraceful act of cowardice" and said the best prevention is to teach children right from wrong. (more at /www.washingtonpost.com/)

The United States will execute its 700th person since the reinstatement of the death penalty in 1977 this week. The executed man was Antonio Richardson, a brain-damaged murderer and rapist with an IQ of 70. More than 500 people have been executed in the U.S. since 1993. Execution is outlawed in 108 countries. (more at /www.amnesty.org/)

Kate Sorensen, a Philadelphia AIDS activist who helped organize last summer's protests at the Republican National Convention, begins her trial this week for rioting, risking catastrophe, criminal mischief, and conspiracy. Sorensen's case has drawn international attention for the scale of the charges and her enormous \$1 million bail, which has been condemned by human rights groups as a clear attempt to suppress freedom of speech. (more at /www.r2kphilly.org/)

Legislation was introduced last week that would open the Arctic National Wildlife Refuge to drilling and encourage further exploitation of natural resources throughout the country. The bill would also increase subsidies to the coal, oil, gas, and nuclear industries, and exempt companies using clean coal technologies from complying with certain Clean Air Act requirements. U.S. Geological Survey studies indicate that there is a 50-percent chance of finding, at most, a nine-month supply of oil in the Arctic Refuge. (more at /ens.lycos.com/)

A massive outbreak of "Foot and Mouth Disease," an extremely contagious virus which seriously debilitates pigs, sheep, cows, and other animals, swept much of Europe last week. The outbreak led European governments to order the slaughter of hundreds of thousands of animals in order to stop the spread of the disease. The emergency caused government officials in Ireland to cancel Dublin's upcoming

St. Patrick's Day parade. The outbreak is being widely attributed to the conditions associated with industrial agriculture that favor the rapid spread of disease. (more at /www.guardianunlimited.co.uk/)

Numerous seed companies have detected the presence of a barred genetically engineered (GE) corn in their corn seed, prompting fears of widespread contamination in the food system. In all, more than 28,000 truckloads, 15,000 rail cars, and 285 barges of corn tested positive for StarLink. StarLink sparked a massive recall of a wide variety of corn products last year when an anti-biotech environmental organization discovered the corn, which was never approved for human consumption, in Taco Bell's taco shells. Europe and Asia have said they will refuse to buy any corn from the United States suspected of containing StarLink, a move that would have devastating effects on the multi-billion dollar corn export industry. (more at /www.washingtonpost.com/)

One in 10 women of childbearing age in the U.S. are at risk of having newborns with neurological problems due to in utero mercury exposure, according to a government study released last week. The in-womb mercury exposure is primarily due to mothers' consumption of contaminated fish. Mercury is released into the atmosphere by air pollution from power plants, waste incinerators, and other industrial processes, and then is deposited into oceans, lakes, and streams. (more at /ens.lycos.com/)

The Earth Liberation Front claimed responsibility for driving spikes into trees to foil logging of a wilderness area in Oregon's Umpqua National Forest. The ELF claimed in an Internet communiqué that it hammered 3 1/2-inch nails and spikes up to 10 inches long into trees in the Hardesty Mountain roadless area, 11 miles northwest of Oakridge. The group has accepted responsibility for 23 major crimes coast to coast since October 1996—19 of them arson. Damage tops \$19.2 million. (more at /oregonlive.com/)

A new laboratory now in operation at Texas A&M University is being used to collect DNA from endangered species. The \$120,000 mobile lab can go directly to the animal's environment and collect its DNA to reintroduce lost species in the future. The first field trip for the new lab was to collect DNA from threatened bighorn sheep in West Texas. (more at /ens.lycos.com/)

Beyond the Bubble is published each week as a service from EPIC, the Evergreen Political Information Center.

EPIC also publishes a weekly email update on politically related events happening around our area and provides resources for activists at Evergreen.

EPIC meets each Wednesday in Library 3500 at 2 p.m. To receive EPIC's email update, to make comments on the news, or for more information on EPIC, please call 867-6144 or contact epicupdate@hotmail.com.

Floods in Mozambique have claimed 52 lives and thousands more are threatened as conditions are worsening. An international rescue effort is under way for the affected 406,000 people; 81,000 of them are now homeless. Helicopters are being sent to evacuate villagers who are being trapped by bursting banks along the Zambezi River, and matters will only be exacerbated if the floodgates along the river aren't opened. (more at /ens.lycos.com/)

General Motors has filed suit to overturn California's zero emissions vehicle (ZEV) mandate, which requires a small percentage of vehicles sold in the state to produce no pollution emissions. GM believes the ZEV mandate is commercially unfeasible and regrets not having

see BUBBLE on page 21

CLASSIFIEDS

FOR SALE

SKIS! Kastle 198cm Rx15 super GSM w/poles, bindings, bag and Rossignol boots size 10.5. \$200 or best offer. Call Patrick @ 704-3199

Summer Jobs

Summer jobs in Unique Pacific NW Island Location: Johns Island, WA. Coed summer camp, est. 1935 focused on community living. Hiring instructors, counselors and support staff. 10 week contract. June 16th - Aug 24th, 2001. Contact: Camp Nor'wester, 62B Doe Run Road, Lopez, WA. 98261. (360)468-2225. norwstr@aol.com. Or check out: www.norwester.org. Join us for a summer you'll never forget!

Funds

Clubs • Student Groups Earn \$1,000-\$2,000 this semester with the easy Campusfundraiser.com three hour fundraising event. No sales required. Fundraising dates are filling quickly, so call today! Contact Campusfundraiser.com at (888) 923-3238, or visit www.campusfundraiser.com

Deadline for text and payment is 3 p.m. every Friday. Student Rate is just \$2.00 for 30 words. Contact Jen Blackford for more info. Phone (360) 867-6054 or stop by the CPJ, CAB 316.



Since 1973
CDs, Cassettes, Lps
New & Used
Spring Sale
Approaches!
April 21 & 22

NEW LISTENING STATIONS
for CDs and Records!
There is much
that you can hear
and buy!

Skateboards, Clothing, Converse Shoes
Ph357-4755
M-Sat 10-8, Sun 12-5
intersect of Division & Harrison
@ Westside Shopping Center

Traditions
Cafe & World Folk Art
"Care to know where your money goes?"
Support fair trade with low-income artisans and farmers and you will...
We are:
• A center for fairly-traded products from around the world
• A cafe with good food
• A performance space for concerts, classes, forums, and more
Website: traditionsfairtrade.com
300 5th Ave SW, Olympia • 705-2819
"Just a splash from Heritage Fountain & Capitol Lake"



Chrysalis
111 Legion Way
Downtown Olympia
(360) 753-5527
WE'VE MOVED TO A BIGGER & BETTER LOCATION WITH COOL STUFF.
TUES-THURS. 10 A.M.-8 P.M.
FRI. & SAT. 10 A.M. - 10 P.M. • SUN. NOON - 5 P.M.

- * BEADS *
- * INCENSE *
- * CANDLES *
- * STICKERS *
- * BUTTONS *
- * CARDS AND POSTCARDS *
- * QUEER GEAR *
- * GLASS ART *
- * STERLING SILVER *
- * AND A LOT MORE!!!!

WHITewater SCHOOL
DO YOU HAVE WHAT IT TAKES TO BE A RIVER RAFTING GUIDE?
No experience necessary. Training begins March 31. (six consecutive weekends)
Wildwater RIVER TOURS
For information call: 1-800-522-WILD (9453)

You Have No Reason to be Bored

Entertainment Briefs

Tired of getting drunk and randomly breaking things? Believe it or not, there are actually things going on in this beautiful town of ours. Rejoice and get off your couch.

Eggus

If you don't feel like staying in Rolly Oly (another quake reference? Shoot), you can go see *Eggus* up in Seattle. It's a spoof of the theater classic, *Equus* about a kid who thinks horses are God, or something. I just had a friend tell me about it; I never read it. The funny thing about *Eggus* is that instead of horses, it's a chicken. And well, chickens are funny. Oh, and the play is directed by sex columnist Dan Savage. The show is at Consolidated Works located at 410 Terry Ave., Thursday through Sunday at 8:00 PM. Tickets are \$14, but only \$12 for members.

Art-Science Exhibit

"Who and/or what is Jehovah? When is Armageddon? Why Michael Jackson?" These questions could be answered by Justin Rodda in his open house art-science exhibit. It is March 9, 10, and 11th in the Lecture Hall Rotunda from 5 PM to 10 PM.

Big Technology

You like 'em big? You like 'em musical? Well, Big Technology is for you! Terry Setter's Big Technology class is having a recital of their original musical projects this Friday, March 9th. It starts at 8:00 PM in the Recital Hall. It's free.

Pecker

Next Wednesday, Evergreen's student group, Mindscreen, continues its weekly movie night with a showing of John Waters' *Pecker*. It's the touching story of a gangly young man who takes photos of his peculiar family. It stars Edward Furlong--you know, the one hope for humanity after Skynet takes over. The movie is in Lecture Hall 1 at 5:30.

Fools Play Improv

Where has all the laughter gone? Well, pal, it's down at Studio 321 at 321 Jefferson, downtown. That's where "Fools Play Improv" performs every Saturday at 9:00 PM. This week, it's *Fools Play 'Our Unscripted Lives'*. What does that mean, you ask? Come and find out; I'm not your whipping boy. Tickets are \$6 for adults and \$5 for students with ID.

Polarity

Aaron Komae's Senior Thesis project goes up this week in the Library 4th Floor Gallery. The show is entitled "Polarity." The Gallery hours are Tuesday through Saturday, 12 to 5. On March 15th, there is an artist reception at 5:30, so you can meet Mr. Komae and gush over how great he is. Probably. The show is open until the 23rd.

Flushed

You know who doesn't get enough credit? The janitors. "Flushed," by Bret Farnsworth, is a solo performance which, due to the earthquake (oh, man, I thought I'd have the one page in the paper without a quake reference), has been held over for one last show, this Friday on the 2nd Floor of the CAB at 8:00 PM. The show is free.

Theater Group

A new theater group in Olympia called Artesian Theater Sightings is presenting a festival of one-act plays and poetry at the Midnight Sun. Plays and Poets is being performed March 8, 9, and 10 at 7:30 PM, with a special matinee on the 10th at 2 PM. Admission is \$9 general and \$7 for students and seniors.

Tom Stoppard

Tom Stoppard! Tom Stoppard! Ain't no stopping that Tom Stoppard!

He is the new bard, as far as I'm concerned. His screenplays have become popular motion pictures to the delight of film buffs (1985's *Brazil*) and swooning teenage girls (1998's *Shakespeare in Love*) everywhere. His plays are quickly becoming staples of the American theater scene, from *Rosencrantz and Guildenstern are Dead* (which is also a terrific film) to *The Real Inspector Hound*. Our own little hamlet has seen its fair share of Stoppard lately. Harlequin Productions recently performed his play *Hapgood*, the SOS Theater program "Becoming Brilliant" performed *Artist Descending a Staircase* by him just last weekend, and now "The Empty Stage" program is doing one of his better-known plays, *Arcadia*. "The Empty Stage" has been working hard all quarter long to put on this production. It runs Thursday, Friday, Saturday, AND Sunday. Tickets are five dollars. Curtain time is 7:00 PM. Why 7:00, you ask? Because the play is 3 hours long. Now, don't let that scare you. This is Tom Stoppard, so just put on your thinking caps and get ready for an engrossing story.

Toughguise

"Toughguise" is a film that explores pop culture images of masculinity and how they seep into men's psyche. It is showing this Thursday the 8th at 7:00 PM in "The Edge" in A-Dorm. A discussion will be held afterward.

Revitalize Yourself...

Eastern Washington University offers over 40 programs in diverse fields; many of these programs are convenient and flexible for working professionals. Courses are held on the main campus in Cheney as well as EWU's two Spokane locations during evenings and weekends.

"I credit the Master of Public Administration Program with facilitating the right mix of professional connections and practical experience that led to me attaining the position I hold today. I continue to use the professional expertise of the faculty on different issues with great success."

— Jennifer Pearson — Stapleton

MPA '98
Executive Director,
Spokane County
Domestic Violence Consortium

EASTERN WASHINGTON UNIVERSITY

...with a Graduate Degree from Eastern Washington University

Orca Books
Olympia's Largest Independent Bookstore

Student Discount
10% Off New Texts

We buy books everyday!
509 E. 4th Ave. • 352-0123
Mon-Th 10-8, Fri & Sat 10-9, Sunday 11-5

Don't call them
DJs

KAOS Programmer
.....Profile.....

PROGRAMMER NAME:
JOCELYNE HIGGINS
SHOW: CO-HOST OF
SISTER SOUND AND
THE JAZZ EXPERIENCE

Sister sound explores the female music scene
Sunday 10:30 to 1:00.

The Jazz Experience focuses on classic and modern jazz with a peppering of experimental.
Thursday 3:00 to 5:00

Where are you from?
I spent my childhood in Honolulu Hawaii, but most of my life was spent in the Redmond/Bellevue area. Then, I lived in Spokane before coming here.

When did you come to Evergreen?
I transferred here from Eastern Washington University for my last year and one quarter of college. There, I studied Media and Writing.

Who are your favorite musicians?
John Coltrane, because I feel like he takes me to another level of consciousness. Miles Davis, Regina Carter, Duke Ellington, Thelonus Monk, and the band Hanuman.

What is your musical philosophy?
Play what sounds good and moves me, what speaks to me and makes me want to dance.

Anything you want to say?
The international jazz scene is really starting to open up, especially groups from Italy and Brazil. One in particular is Hellborg, Lane, and Selvaganes.

On March 15, she will be interviewing local group "Mother's Friends" on the Jazz Experience.

"The Most Fun Place to Shop in Olympia!"

FINDERS KEEPERS ANTIQUE MALL

1728 State Avenue 943-6454
Mon-Sat 10-5 Sun 12-4

Arcadia



A glimpse behind the scenes of the "Empty Stage" production of Tom Stoppard's *Arcadia*, playing this weekend in the Experimental Theatre. For more information, see Entertainment Briefs.

Evergreen True Campus Stories

By Michael Tanner
Evergreen is ripe with legends and mysteries, from steam tunnels to "Happy Land" to Ted Bundy (who is the reason cops carry guns). Some of these legends have an inkling of truth, and some have an extreme deficit of that. Most of these Mysteries have clear answers; you just have to find them. I will find the answers, I will unlock the Mysteries, and I will reveal the Legends—here and now, with help from you.

Charlie M. asks:
Q. I heard that Ted Bundy killed a girl in the stairwell of A-Dorm. Did this really happen?

A. Nope. This is an old story used to frighten young co-eds. It was B-Dorm. Ha ha ha, only kidding. Or am I? No, really, I am. Kidding, that is.

C. Anni asks:
Q. I heard that when the TESC Police confiscate "paraphernalia," they store it in a cage in the basement of the Library. And that one year, a kid broke in there and got everything out, sold it, and then donated half the money to the school. And that's how the Longhouse was built and that's why you can "smoke out" in there and the administration won't let cops hassle you. Is this true?

A. This is actually a really good legend, but

it's not true. And the cops can and will "hassle" you if you do that in there. I think that in about four years, this legend will transfer to the new floor of the COM Building, because it should be about finished by then.

Mr. CHUD asks:
Q. Someone told me that Evergreen has a series of underground tunnels running all over campus, and these tunnels can be used to enter any building. Is this true?

A. Let me ask you a question, Mr. CHUD! Shouldn't you all ready know? I am on to you, Mr. CHUD! Don't you ever try to wreak your pale, sharp-toothed fury on my campus!

Crystal Blue Persuasion asks:
Q. I heard Evergreen has a fraternity.

A. This isn't a question. It's a statement, Crystal. But I'll help you anyway. Evergreen has had several fraternities over the years. They usually come about when a group of friends watch *Animal House* or *PCU* too many times and say to each other, "Wouldn't that be the bomb if Evergreen had a frat?" And then they usually disappear after they realize that no one thinks that it is as funny as they do.

Well, here we are, at the end. I hope you have been informed and enlightened. Stay tuned for next week, where I will tackle such topics as the "Walking Girl," "Happy Land," and the most mysterious mystery of all, "Why are there so many student groups?"

Please feel free to ask any and many questions and I'll do my best to answer them. Mikeesze@hotmail.com

Explore the Alternatives...

- Conscientiously Selected Nutritional Supplements
- Over 300 Bulk Herbs & Teas
- Cruelty-free Bodycare
 - Worldly Incense
 - Cards • Candles
 - Jewelry • Books
 - Feng Shui Supplies
- Gifts to Delight You & Yours
- Massage by Appointment

Open 7 Days
(weeknites 'til 8)

RADIANCE
Herbs & Massage

www.radianceherbs.com 357-5250
113 SE 5th Ave, Downtown Oly

LOCAL VOICES
INDEPENDENT MUSIC
GLOBAL NEWS
89.3 FM

KAOS
Olympia Community Radio

Community sustainability requires community support. Become a member of KAOS and help keep free speech and diversity alive in the South Sound.

The KAOS Spring Membership Drive is March 2-15.

To make a tax-deductible contribution to KAOS, call 867-6894.

Thank you!

MAYAN COSMOLOGY

By Courtney Haedt

Moon 9- The Solar Moon of Intention

The 9th Moon in the Mayan calendar focuses on intention. It is a good time to evaluate your goals and solidify a plan of action. What do you intend to create during this cycle? Send a focused vision out to the universe and then *release any attachment to the outcome!* Learn to exist in balance without needing to judge your actions. When you are in tune with your true intentions your actions will reflect the purity of your soul. Beware of over-pondering and getting stuck in patterns. Do not live in fear of the future, or dwell in the past. Claim the NOW. Create with conscious awareness and lighthearted glee a life that suits your ideal images. Simply live free!



Thurs. March 8 - YELLOW CRYSTAL SEED - KIN 64 - Day 2, Moon 9 <PORTAL>
Tone 12 - Fueled by recent accomplishments, consider future possibilities.

I dedicate in order to target - Universalizing awareness - I seal the input of flowering - With the crystal tone of cooperation - I am guided by the power of intelligence.



Fri. March 9 - RED COSMIC SERPENT - KIN 65 - Day 3, moon 9
Tone 13 - Carry learned knowledge with you as you formulate an attainable goal.

I endure in order to survive - Transcending instinct - I seal the store of life force - With

the cosmic tone of presence - I am guided by the power of universal water.



Sat. March 10 - WHITE MAGNETIC WORLDBRINGER - KIN 66 - Day 4, Moon 9

Tone 1 - Gather conscious energy for approaching interactions. I unify in order to equalize - Attracting opportunity - I seal the store of death - With the magnetic tone of purpose - I am guided by my own power doubled.



Sun. March 11 - BLUE LUNAR HAND - KIN 67 - Day 5, Moon 9
Tone 2 - Expect friction, and make the most of its energetic charge.

I polarize in order to know - healing - I seal the store of accomplishment - With the lunar tone of challenge - I am guided by the power of self generation.



Mon. March 12 - YELLOW ELECTRIC STAR - KIN 68 - Day 6, Moon 9

Tone 3 - Sensitivities are awakened to the movement of creative energy. I activate in order to beautify - Bonding art - I seal the store of elegance - With the electric tone of service - I am guided by the power of free will.

Tues. March 13 - RED SELF-EXISTING MOON -



KIN 69 - Day 7, Moon 9 <PORTAL>
Tone 4 - Defining your intentions with clarity amplifies their ability to manifest.

I define in order to purify - Measuring flow - I seal the process of universal water - With the self-existing tone of form - I am guided by the power of life force.

Wed. March 14 - WHITE OVERTONE DOG - KIN 70 - Day 8, Moon 9

Tone 5 - You are capable of intense facilitation of effort. Claim your stance.

I empower in order to love - Commanding loyalty - I seal the process of heart - With the overtone tone of radiance - I am guided by the power of endlessness.

Just in case you weren't tired of Police Bashing

by Nathaniel Hitchcock

One weekend, some students got together and decided that their building should host a large party for the thirsty residents of this campus. Since these residents were responsible and did not want to bring undue stress upon themselves, they notified the local powers and jumped through all the hoops. Six and one-half kegs of intoxicating brew were consumed. Needless to say, the party was a success. Having had my fill of the evening's antics, I went for a drunken stumble with several friends. I returned to find my roommates alone in the living room incoherently trying to piece together what happened. I questioned them for answers but soon realized that one of them had been beaten delirious, and the other, so pumped on the adrenaline of the situation, was equally distracted.

The days that followed shed new light on the happenings as everyone slowly sobered up enough to decide on their story. The assailants had worn out their welcome and were asked to leave; before doing so, they assaulted three of the residents downstairs and my roommate. These men were not students. They escaped the clutches of the one officer on duty and lived to pillage another day. The next weekend, they returned. One of them was identified and arrested. This man was released with the pathetic charge of "assault IV," which is nothing but a misdemeanor. This man handed out two concussions that weekend. He was apprehended and slapped on the wrist. Several days after his release, he was arrested again, speeding away from the red and blue with a stolen gun. He was released shortly after. An officer paid a visit to my downstairs neighbors the other day. He gave them a copy of a newspaper article which documented the above-mentioned event. This, of course, inspired massive paranoia. The officer then suggested that if truly troubled by these events, the residents could move. Everyone in the house will be out by spring quarter.

My question—comment—outrage—is this: what the fuck are Evergreen Police Services doing? Are TESC cops the laughing stock of the police force? Hence, there are concerns not addressed, nor should they be, for this is what I see as the most botched,

see Bashing on next page

LETTERS

The Men in the Mirror

By Ben Green

How many letters printed on these, the Letters & Opinion pages, are written in tones that are aimed to suggest that someone or, in many cases, everyone, is less intelligent or in some way less enlightened than the writer? I imagine this letter too, will be counted among them, although I've not written it yet and its contents are still unshaped in my mind. I am essentially reprimanding previous submissions for their arrogance and utter lack of self-conscious reflection.

In tones of moral superiority, we talk about the other naive and ignorant people who don't know what oppression really is. This form of one-upmanship is no less foolish than any other. "You are over-privileged. You don't know what you are talking about. I grew up in The Ghetto, so I know what *real* oppression is like. My ancestors suffered more than yours, so my knowledge of my people's history is better than yours."

This might be a Letters & Opinions page, and I'm sure you have the right to say whatever you want and get it printed here, but it doesn't seem appropriate, constructive or necessary to make personal attacks, talk about how your past entitles you to be arrogant, condescending or self-righteous, or to make generalized statements about everyone else's inadequacies, and how we've all failed to live up to your *justly collected* expectations.

As Americans, we are obsessed with our rights but tend to ignore our own social responsibilities while simultaneously telling other people to be conscious of theirs! How socially responsible is it to berate people and call them names? Even when these negatively connotated designations are, in a practical sense, accurate, it is the action of an enlightened, intelligent, or psycho-emotionally grounded person to choose to write and print such things instead of something which attempts to elevate their fellows to a point where they are capable of understanding that which you purportedly grasp?

Geez, I'm using a lot of commas. Yes; I'm trying to write multiple sentences at once. That happens a lot... All the time...

It's not that we're not really trying, but it seems like we're lacking the intention to change.

BASHING

mishandled, and idiotic resolution of a drunken assault. I don't care if you are the hippies of the police force; when a call comes in reporting an assault, you don't have enough time to finish that pastry. When there is a dangerous man with a vendetta against innocent people, you do not allow him to be released on bail because of your incompetence in delivering the facts.

If the only reason you're here is to hand out menial drug charges, keep us from comfortably and casually unloading groceries outside our homes, and tell us that our music is too loud, then why are my tax dollars funding the fancy equipment that fills your car and hangs from your waist?

Letter from an Alumnus

Dear current students of The Evergreen State College,

Hello, "Greener!" Today, I write you as an alumnus. I write to offer you a few words of advice and encouragement.

First, the bad news. As most of you know, the world outside of Evergreen's walls is not as welcoming and accepting as TESC. Employment is increasingly competitive, and while no one likes competition at work, that's what it amounts to. You're also facing higher costs of living—depending on where you live, of course.

The good news is that, if you pay attention in class, give it your all, and gain a broad experience in various disciplines, you'll excel above most of the other college students across the country. Personally, I was able to design and work three internships at state, federal, and grass-roots organizations. The ever-quoted "The more you know" theme runs true.

As for advice, I have plenty if you have an open ear. Being a "Greener" has its advantages and disadvantages, namely that many people, organizations, and colleges will typecast you. Sometimes, the

stereotypes have their truths.

An example: Washington's work history revolves around logging. While tree-hugging environmentalists are passionate about trees, loggers are passionate about their next

Paycheck—understandably. HOWEVER, many loggers gain a broader respect from the masses because the environmentalists make the mistake of forgetting to admit that they live in wooden homes and use paper, pencils, and books. My point is, work hard at "practicing what you preach" and leaving no holes for critics to punch through.

Another example: the WTO protester who sat atop the Nike Town building in Seattle. What was he wearing? I believe it was Nike shoes. Don't let this ruin your point! Another bit of advice, based on hypocrites, is this. While you love the beautiful fragmented forest habitats spread around college, you also know that some of these stands must be cleared to make way for more buildings, more lots, etc., to—you guessed it—make more room for more people. SO when you harp about not wanting these stands cut, think carefully, especially if you moved out from another state, before

you complain about the college's growth.

Lastly, a request for help. The human population is booming. Every day, I am more convinced that this is the underlying reason of many, if not all, of the world's problems. Whether it is the traffic that makes your commute home an extra hour, the huge lines and rude people at grocery stores, the clearing of more forested land, loss of biodiversity, pollution, sickness, extinction, tuition prices, taxes, etc., they all have a connection to growth. I'm told we can't do anything about growth and overpopulation. Help me prove that I'm wrong.

I am excited for the communities and environment that you will take your Evergreen training to when you go out into the world. I hope you will be able to help open other minds to new and refreshing ideas and spread the community-based atmosphere throughout this large country. Good luck!

Remember, you'll always be a Greener. All you have to do to join the club is pay tuition!

Regards,
Ben Kinkade

What Can You Do To End Violence On Campus?

by Joshua Eberle

The topic of VIOLENCE has been a hot topic lately:

1. the hate crimes in housing this past fall
2. the assaults in Housing a few weeks ago (see front page article in last week's CPJ)
3. the reported and all the unreported assaults

It is the up to each individual in the community to end violence and all forms of oppression. I am asking for your support in ending violence on campus. There is a petition that is circulating which aims to increase services geared towards ending violence on campus. As students our voice has power. Collectively we can bring justice to our own community; it should be something we demand and expect, not something that we struggle for. Your support is needed—your voice needs to be heard. Petitions are located in the Women's Resource Center.

When two or more are gathered, Joshua-Aaron Eberle
If you have questions, please contact me at 867-5517

P.S. Encourage your parents to call Art Constantio and ask, "What are you doing to ensure that my daughter/son is learning/living in an environment free from violence?"
Art's phone number is: 360-867-6296;
E-mail: costanta@evergreen.edu

Know What You're Celebrating

by E. Rose Nelson

I'm sure a lot of people are tired of hearing about personal responsibility. But let's face facts, shall we? If more people had it, we'd probably talk less about it. Pioneer Square suffered relatively severe damage in last Wednesday's earthquake, so a lot of people missed that some of that damage was not earthquake-related but stemmed from "Mardi Gras" rioting. In fact, Mardi Gras and the earthquake had the same number of deaths. One was a force of nature; the other was people unaware of the meanings of their actions.

Mardi Gras, or "Fat Tuesday," is an old Catholic celebration. In the Catholic faith, Lent begins on Ash Wednesday and lasts until Easter. Lent is a period of forty days and nights of atonement for sins. At first, Mardi Gras (that's French, by the way) was just a way to get rid of the food that people weren't allowed to eat during Lent. In time, that developed to, "Well, we've got to atone; let's have something to atone for!" In both of these instances, the celebrating was the prelude to a long period of soul-searching and self-improvement. In other words, Mardi Gras was a prelude to making yourself a better person; it wasn't a cheap excuse to drink beer and flash people. It certainly wasn't rioting in the streets.

Another popular "drink beer" holiday in this country is St. Patrick's Day. This is another Catholic holiday; it is the feast day of Saint Patrick. In Ireland, where Patrick is the patron saint, it is celebrated primarily by going to church. Now, don't get me wrong,

The Irish have been known to drink a little beer (or mostly stout) in their time, but they don't dye it green, and they don't just drink. Drinking in Ireland is more social than that. There is singing and storytelling; people may drink a lot, but they drink a lot over a long time. (My personal feelings on Saint Patrick aren't exactly the greatest—don't believe anything you hear about him "peacefully bringing Christianity to Ireland." Those snakes he drove out of Ireland were Druids, who were slaughtered.) To be sure, they can still get pretty drunk, but the alcohol is a sort of lubricant to loosen the performers.

The third great "ethnic" beer-drinking holiday in this country is Cinco de Mayo. In Mexico, Cinco de Mayo is only celebrated in one area. It is not, contrary to popular belief, Mexican Independence Day, which is in September. Cinco de Mayo celebrates the Battle of Puebla, and it is primarily celebrated in Puebla. I will admit that I don't know how Cinco de Mayo is celebrated in Puebla, but I do know that it is not celebrated in most of the country.

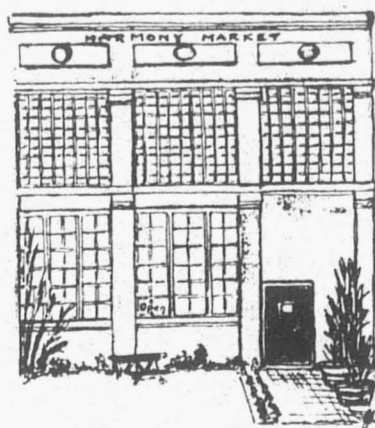
If you're going to drink, nothing I say will stop you. But don't take someone else's celebration as an excuse. The CPJ does not accept anonymous contributions for the most part, saying instead, "Own your words." I say, "Own your drinking." If you don't know the meaning behind the celebration, you're using it as an excuse, and making excuses for drinking is one of the signs of alcoholism. If you want a party, have a party, but leave Lent, Saint Patrick, and the Battle of Puebla out of it.

KEY OF TERMS

PICTURE IMAGES - represent the Mayan Glyph, akin to astrological signs.
CAPS - the Mayan glyph name of the primary energy of the day.
ITALIC CAPS - the tone of the day. Tones are frequencies that encourage particular action.
KIN # - the number of the day as we travel through the 260-day cycle of the Tzolkin. (i.e. -65 out of 260)
Tzolkin - the ancient Mayan chart diagram that contains the tone-glyph combinations in sacred code.
<PORTAL> - used to distinguish the day as particularly energetic, challenging, and important.
italic script - the affirmation of the day as determined by the combined energies of tone and glyph.
Dot-bar code - seen in the Tzolkin, it is the Mayan counting system. Each dot equals one, each bar equals five. One bar with two dots above it would thus equal seven.
Wavespell - a thirteen-day cycle which can be used to work out a major issue in your life. Play with it.
In Lak'ech - Mayan blessing meaning "I am another yourself."

Harmony Antiques & Karinn's Vintage Clothing

Customer Appreciation Day, Saturday, March 10th!



HARMONY ANTIQUES
113 Thurston Ave. NE
Downtown Olympia
OPEN DAILY
(360) 956-7072

Complimentary Batdorf and Bronson coffee served daily.

Your friendly neighborhood antiques, collectibles, & giftware store

Mediation Services

Winter worries?
A misunderstanding?
Stressed?

Students, Staff,
Faculty can
resolve conflict.

FREE
Safe & Confidential

Call the Center for
Mediation Services
867-6656

LETTERS & OPINIONS

Think Beyond the Present

by Megan Syverson

Greetings from an "eco-colonialist." Beware: I have been known to pursue ignorantly my environmental agenda "at all costs (including human survival)." That, at least, is how Catherine Tagnak Rexford targeted me, and other members of WashPIRG, in her recent editorial in the CPJ. We are working to keep the Arctic National Wildlife Refuge from being opened to oil drilling. Catherine took offense at our efforts; her hometown of Kaktovik is economically dependent upon the oil economy of nearby Prudhoe Bay, and drilling in the Arctic would create jobs and revenue for her community.

I appreciate Catherine's call to "think before I act," and certainly understand the complexity of this difficult issue. I acknowledge my responsibility to research all aspects of this issue thoroughly, as well as my obligation to act consistently with my findings.

"You, who have elected to cease exploration and development at all costs, will remove this tax base, along with the right of the Inupiaq to survive economically... You are dictating to the Inupiaq people how to control their lands." This statement from Catherine's letter is a broad and unfair generalization of our actions. Despite its three Superfund sites, we do not want to shut down Prudhoe Bay or the other 95 percent of the North Slope that is already open to drilling. Preservation of the Refuge would not take away anything that the Inupiaq people already have. Drilling would, on the other hand, destroy an existing economy for other native people on the North Slope.

Catherine asked if we have ever engaged in dialogue with any native person from Alaska; yes, and we realize that this issue sharply divides Alaskan tribes. The Inupiaq are not the only native people on the North Slope. Catherine has focused upon the issues of her people, who have recently "enter(ed) into the cash economy." The Gwich'in tribe, on the other hand, are fighting vociferously against drilling to ensure their own survival near the Arctic Refuge. Drilling will take place on the Coastal Plain, what they call "Vadzah googii vi detik'it gwaplii," or "The sacred place where Life begins" (Gwich'in Steering Committee web site). Their subsistence lifestyle, including over 75 percent of their protein, depends upon the 129,000-member Porcupine Caribou Herd ("Gwich'in" translates as "People of the Caribou"). The Coastal Plain is the annual calving grounds of the herd, and even the most environmentally responsible drilling is

estimated to decrease its population by at least 40 percent. In the words of Sarah James, a key Gwich'in leader, "The caribou is not just what we eat; it is who we are. It is in our dances, stories, songs, and the whole way we see the world. Caribou is our boots and mittens. Caribou is how we get from one year to another." (Arctic Circle, "Inupiat and the Gwich'in")

The Inupiaq cannot speak for all native people; their position, understandably enough, is driven by their own economic interests. Twenty years ago, most Inupiaq of Kaktovik opposed drilling on environmental grounds. Inupiaq legislators still oppose offshore drilling, as whale, walrus and other sea mammals are to the Inupiaq culture what the caribou are to the Gwich'in. I challenge Catherine to explain why the only method she sees for her people's economy to flourish is through the destruction of another culture.

Who is the "colonialist" in this issue? Is it really the conservationist devoted to preserving the current state of the Refuge? How about the oil industry that plans to drill on sacred land, destroy the subsistence economy and culture of 7,000 Gwich'in, and entrap the Inupiaq of Kaktovik into an unsustainable export economy?

In her letter, Catherine demanded: "What are YOU personally doing to encourage alternative energy? You are taking this position... but not participating in the establishment of alternatives." Actually, I am running our Renewable Energy campaign, which is supporting sustainable energy bills currently in the state legislature. I invite Catherine, and anyone else interested in promoting renewable resources, to join us.

This is an issue that affects us all, and which transcends cultural boundaries. To me, irreversible harm to the environment, the Gwich'in people, and even to the future Inupiaq of Kaktovik outweigh a temporary economic boon. Who will deal with the Superfund sites? Who will revitalize the economy of Kaktovik when the last drop of oil is extracted?

Catherine challenged WashPIRG: "Think before you act." I offer my own challenge, to those who support drilling as well as those who think that they will not be affected by this congressional decision: think beyond the present.

WashPIRG meets Wednesdays at 4pm in the Lecture Hall Rotunda. Feel free to email me with questions or comments about drilling in ANWR at emailnesparingly@yahoo.com.

Thoughts on the Representation of the Middle East on Campus

By Daniel Fleck

A few months ago, I attended a talk at the Evergreen campus given by a Palestinian activist concerning the recent violence in the Middle East and the quest for a lasting peace. The lecture was organized in solidarity with the First Year Core Program Imagining the Middle East. The speaker was a member of a Palestinian activist organization working towards accomplishing a lasting peace in this volatile and complex region. The organization had established a seven-point program, seven imperative conditions under which a lasting peace combined with a sense of justice could occur. These

THE SKINNEY

What about the trees?

by Irene Mark Buitenkant

Twenty years ago, Ronald Reagan was told that 10% of old growth remained. He replied, "That's enough."

Tom Snyder, a TV host, asked what the problem was, because he observed "lots of trees" from the window on a train trip up the coast. Now, only 5% of old growth remains.

The tree-harvesters have given us comforting words such as sustainable and manageable, but the trees continue to be cut down by people who make public policy for their self-interest.

The people who founded this school promoted reading and discussions which advanced critical thinking. Time and opportunity were not wasted on competitive sports at the beginning. (We now have three pages in the CPJ reporting on sports.) Others, less courageous, relying on their own conventional wisdom, discouraged enrolling students who weren't locals, (thereby losing the perspectives and experiences of students from other areas), promoted armed security (advancing gun culture), and encouraged the interests of loggers. How is it possible to think of logging (thinning the forest) here at Evergreen?

I wish that those self-righteous, beer-drinking hedonists learned how high one can get on creating solutions to the many problems that our society is enduring and stop looking for fun, fun, fun. I suggest that they attend the alma mater of our President.

More specifically, our acceptable social norms and behaviors are soaked in violence. Being the norm makes it easier for most people willfully or

blithely ignore the violence we visit on others and breed within ourselves. I'm not just referring to obviously violent social norms like advertising, television, meat, the objectification of women, and racism should be obvious. Nike is only a little less so. Only an idiot would wear Nike, and if you have a problem with that assessment come talk to me.

Look at anything you own closely and intelligently. Your clothing? Safe to say made by underpaid mothers in conditions ranging from simply exploitative to inhuman. Your computer? See above, plus the fact that it is toxic from inception to completion in virtually every component and is designed to enter the waste stream in not more than ten years. Remember too that every component of it involved or was generated via human labor. It had to be packed, checked, unpacked, shipped, inspected, etc., and when it gets tossed, all that effort goes as well. Your auto, or mine for that matter? Our automobiles run on blood. It's dinosaur blood, Iraqi blood, Saudi blood, "as little as possible" American blood, or just the blood of the tens of thousands of people these massive kinetic missiles kill and maim as an integral part of our infrastructure and daily lives. Your books and newspapers? Former British Colombia Rainforest—I can just skip the dioxin and deforestation rant, right? I don't have to make the connection between the fact that we use primarily hydroelectric power and have, like, two wild salmon left, right?

It's violence all along. The food we eat comes primarily from exploited migrants working stolen, formerly forested land with dangerous chemicals on non-native plants that are beset by weedy invasive species. The land is watered from dammed rivers and, since our little internal combustion experiment seems to have had some

unanticipated side effects, we can expect to tap a few more rivers and shuffle the last fish or two out of the way in doing so. Or we could just import more tomatoes, since Mexico can ship those new Monsanto Tomatoes in the dead of winter now; that way, we can export a portion of our water shortage and mask our shortfall by importing more of the water-intensive produce and livestock. Chiapas may get thirsty, but they aren't us, so screw them.

Violence, violence violence. Blood and axes, consumer demand and "water shortage" in southern Mexico with an attendant short-term spike in infant mortality that the World Health Organization is at a loss to explain, acute toxicity, and proliferation of lung tissue leading to emphysema and premature death.

Extra tomatoes, sure... would you like fries with that? This is violence. Our day-to-day lives are supported by, and generate waves of, violence that echo in every sphere. It is not easy to acknowledge; it is less easy to take responsibility for it and decide how to attempt to diminish the violence we create. You are supposed to ignore it or be too busy to deal with it. That way, it can continue unabated. It may help to know that you won't be given any choice in the matter; if you want one, you'll have to make it yourself at great personal cost. With that in mind, I feel confident that to most of you it is appropriate to say, "G'night, sleep tight; you may resume rituals of self-distraction until next week when we run part two, and you might not want to read that one either."

Next week, guns and guns and sex and violence. The fact that "our" cops carry Glock nine millimeter semi-automatic pistols at all times has no statistically provable correlation with the incidence of violent crime.

presentation, not to mention the intensive and uninterrupted stigmatization of Israel that has been beaten into people's brains in and around the Evergreen community by figures of intellectual authority, over the radio airwaves, in the student newspaper, and, at the risk of seeming presumptuous, in the tainting of the Middle East Program by the personal political beliefs of its professors. At no juncture in this presentation was a word spoken in defense of Israel; this was not its purpose. It seems reasonable that, perhaps on a later date—not necessarily at the same time as the Palestinian activist's talk, for it was not advertised as a debate—a speaker could be invited to present an Israeli perspective. I have seen no flyers announcing any such visit, and, furthermore, it appears highly unlikely that it will ever occur, for it directly conflicts with the beliefs of the program's professors, and is therefore devoid of any relevance whatsoever.

We are as Violent as a basketfull of glue-sniffing wolverines. Part one.

by Rusty Oliver

Last week's CPJ describes in some detail violence that was visited on members of our community. It is a difficult thing for us to accept because, as the author pointed out, we do tend to think of ourselves as insulated from the violence of the world "Beyond the Bubble" The allegations of unprofessional conduct on the behalf of the TESC Police are disturbing and worth paying close attention to. I hope the CPJ follows up on this story.

However, there were two not uncommon assumptions in the article that are worth examining. The first is that there is little violence on campus. This is true in the sense that, compared to densely populated urban areas, our per-capita incidence of violent crime is low. Statistically speaking, this is attributable to a few salient factors: the body of people on campus do not exist in low or no income brackets (even loans and once-a-month paychecks are income).

Secondarily, alcohol is not sold on campus, although it is still consumed and it seems safe to say that crack, methamphetamines and cocaine are not broadly trafficked on campus. Poverty, despair, and alcohol/drugs fuel violence; as they are present or absent, so is overt physical violence.

It's still a violent campus. Our history is violent. This whole country was carved with a cruel and knowing knife from a native body, and in the ongoing process of adapting the appropriated locale to the needs of our economy, it has been virtually destroyed by laboring women and men who get nothing from either the process or result.

question posed by a member of the audience, composed primarily of first year students, during the question and answer session that immediately followed the activist's talk. The young girl asked, "Do you think that the Israelis would be willing to accept peace according to the program put forth?"

It seems to me the more reasonable question to ask would be to reverse it: "Are the Palestinians willing to accept peace on these terms? Is coexistence with Israel at all feasible for the Palestinians under any terms?" If the history of the last fifty years and the recent El-Aksa Intifada has taught us anything, it is that the response, many Israelis believe, could likely only be a resounding no. The fact remains that much of the internal Palestinian dialogue is motivated by visions of bloodletting, vengeance, destruction of the Israeli society, and jihad—holy war. The fact that the question was phrased the way it was, questioning the willingness of Israelis to accept terms for peace, is a testament to the entire atmosphere of the

provides a valuable counterpoint to mainstream perceptions delineated through mass media, etc. I in no way advocate or imply that this professor should be denied his right to free expression of his beliefs or findings, regardless of the controversy that pervades any specific issue he or she may be commenting upon. In fact, it is a noble and somewhat heroic undertaking to sacrifice prestige and privilege to express dissenting views. As Martin Luther King once orated at the height of the Civil Rights Movement, "It is one of the greatest glories of America that we have the right of protest."

However, I wish to draw a distinction between the mere expression of personal politics and the unethical imposing of personal politics upon relatively uninformed individuals for the purpose of indoctrination.

One should not be contented with hearing but one side of a story. The consequence of this oversimplified and gratuitously one-sided perspective can be perfectly illustrated by a

DUBYA'S CORNER

Dubya's Decision

Bush's new abortion foreign policy questionable

by Rusty Oliver

This letter is written as a response to George Walker Bush's decision to rescind, by executive order, funding that the United States has historically extended to organizations that provide abortions in conjunction with other health care services.

I would like for a moment to assume that George Bush's words, the speech that he gave accompanying this executive decree, had some meaning. In other words, I would like to entertain the possibility that he meant what he said and intended that what he said be interpreted to closely resemble his intentions, thought, philosophy, disposition, etc.

I realize that this is unusual. I understand that I am expected to listen to the President's speech and hear it as either empty rhetoric or as a mildly distorted version of what the President's speechwriters and handlers thought he should say. For the moment, I am also going to disregard the possibility that Dubya (h omitted) was not simply appeasing the conservative interests that engineered his succession and take his statement to the effect that he has "strong personal feelings on the matter" as sincere.

I am laying this out carefully because, within this narrow set of assumptions—i.e. that Bush actually means what he said—reconciling Bush's statements with reality leads me to only three plausible conclusions, and none of them are pleasant.

Bush characterized his actions as devolving from a belief in the sanctity of human life, a belief which he emphatically professes even though his hands are still warm from the switch, and furthermore, that his actions are in all ways consistent with his "compassionate conservative" demeanor/posture/brand or whatever. In this instance, he is concerned with the "lives of the unborn." Unfortunately, this sincere expression of concern for the lives of the unborn will have immediate and severe effects on the lives of women in Third World countries. Apparently, the "logic" of the decision is that removing funding will disable or hamper the ability of health care services to provide abortions and that this will save human lives. Therefore, his policy is intended to save human lives, especially those of "unborn children."

If Bush's decision was based on the idea that making abortions more difficult for women in other, poorer, countries will save human life, he is grossly, stupidly wrong on two counts. Firstly, any modestly intelligent examination of health care statistics, like those of the World Health Organization,

will show that, as abortions become less available, the number of pregnant women who are injured or die of procedure-related complications increases dramatically. This is not obscure, secret, or debatable information. This is the kind of information a competent sixth grade book report will turn up.

Secondly, if the desired outcome were achieved and more embryos were reluctantly brought to full term BY THE SINGLE, POOR, AND YOUNG MOTHERS who are disproportionately driven to resort to abortion, then the number of children born into poverty would dramatically increase. Poor children are more prone to dying than the children of middle and upper classes. We can expect many, many poor women and children to die as a direct result of Bush's policy.

If this assessment were somehow wrong, then population in the affected countries would increase. Explosive human population growth is arguably the greatest challenge facing humanity. In countries whose per income capita is lower than the US, it is plain that Bush's policy, if it were to positively affect birthrates, would help to ensure that more children are born in countries where they will have to struggle and compete to get their basic needs met. There is nothing to ensure health, happiness, or even survival in such circumstances.

Furthermore, prenatal care is chronically underfunded, and it is the most efficient financial allocation that can be made to ensure the health and well-being of newborns. Where is Bush on this? Why is he not striving to extend money to ensure "unborn children" exit the womb alive? Of course, if Dubya were concerned about preserving "the sanctity of human life," he would be paying attention to the poverty that is the primary reason women seek abortion. But as a strong proponent of undemocratic, poverty generating apparatuses like the IMF and World Bank and "globalization" in general, Dubya would be a living contradiction if he managed to remove the chains of poverty from anyone but his own privileged, "fortunate" self.

So a cursory look at health data shows that Bush's policy cannot and will not translate into a situation that is congruent with his stated goal. In other words, it indisputably will not work.

If we assume for the moment that Bush has reasons other than those he stated vehemently, publicly, and repeatedly for pursuing this policy, then he is attempting to deceive us ineptly.

Where's the Other Point of View?

LETTERS

EMILY DILLING IS THE



A-DORM AVENGER

In Case of Emergency: Feign Broken Toilet

The recent assault of four Evergreen students in their own home seems like a hard thing to ignore. However, Evergreen has found a way. There has been minimal attempt by the community or the police to help the accosted students. The Evergreen populace seems to be more comfortable ignoring that violence can occur on our campus. By ignoring this incident, they are doing nothing to prevent it from happening again. So, to do my part in aiding all prospective victims of senseless, sometimes-belligerent violence, I am providing a guide to getting help within a system that feels that nothing needs fixing.

If you are alone in your apartment and a shady, insidious, uninvited character is making you feel uncomfortable, go outside and yell "KEGGER." Your house will be inundated with people, and your would-be attacker will either be scared off or swept away by the crowd as they go out to seek a real kegger.

Now, if the kegger thing doesn't work, or if the attacker remains persistent and police involvement seems necessary, DO NOT call police services and tell them what is actually going on. Instead, follow this script:

You: Hello, I live in * ___ and my toilet is overflowing; water is everywhere. I don't know what to do. Please send help.

Them: What?! You say there's water everywhere? We'll be there right away. Don't worry; everything is going to be okay.

The R.A. or police might be upset that you lied to them. They were prepared for a toilet emergency, and you have provided them with a mere domestic abuse situation, but it is their job, so they might as well do something about it.

Once the criminal has been apprehended, the best way to initiate a community awareness program would be to go to the grievance officer and see if he can make all the kids who have been arrested for M.I.P.s at the kegger they went to after they left your house to work off their community service by making posters enlightening people about the fact that violence and hippie schools can, and do, coexist, and that ignorance isn't necessarily a weapon against violence.

Gwen Gray: I was just thinking...

Life with Thomasina: the agony and ecstasy of Art in college

Ah, week nine! A time to wish that the quarter was three weeks longer or already over, a time to glimpse the imminent vacation through bloodshot eyes and shudder with relief. This is especially true for people possessed by the compulsion to express themselves that we call "artistic impulses" because that sounds better than "insanity, but probably not the dangerous kind." At least, those of us who have chosen to take a program related to our art. The thing about art is, the more you do it, the better you get. And the better you get, the harder it is to remember to do other things. Devoting most of your conscious hours to it for three months is a good way to get swallowed whole. As the end of the quarter approaches, many of us are doing some of our best work while rapidly losing our tenuous grip on sanity. This is true of every quarter in which we allow our art to dominate our lives, but that does not make it any easier to live through at the moment. Splendid examples of this can be found in my own home.

The Empty Stage theater program (responsible for the recent production of "Angels in America") is preparing for their production of Tom Stoppard's "Arcadia." "Arcadia" is an intense and witty play about time and gardening, intelligence and intellectuals, and the sexual and mathematical action of bodies in heat. It will run from the eighth to the eleventh, which means that by the time you read this several of the

performances may be over. And there is no one, not the director, or the stars, or anyone else, who takes more satisfaction in that than I do. Because my roommate Heidi-rose plays "Thomasina," one of the female leads, and it's killing us both. Heidi-rose is so busy with the play that she doesn't even have time to sleep, and I am just so sick of "Arcadia" I could choke on my own bile. I love Heidi-rose to death, you understand, but "Thomasina" is a god-awful roommate. I have some faint hope that once the play is over she'll move out.

I don't mind running lines all the time or having my library raided to provide props. I've gotten used to seeing my roommate less than my professors, and considering how little time I spend away from my desk, it would be the same if she were in a normal program. What bothers me is that we haven't had a single conversation in the last month that didn't involve "Arcadia." Not one. If I hear one more Arcadian reference, one more story about the trauma of being forced to remove facial piercings in order to play a character from the 1800's, I'm going to start talking to our potted plants.

In some ways, I deserve it. I'm always making Heidi-rose read my writing, or bursting into her room first thing in the morning to print six copies of a seven-page piece that I'm bringing to workshop that day, or stealing her thesaurus because it's better than mine. Worst of all, I make her read the first drafts of George W. hadn't been elected. She

puts up with all of this, just as I put up with "Thomasina," and we complain surprisingly little to each other's faces. Mostly, I think we're too tired.

At the moment, I am so sick of both writing and theater that I would happily beat Tom Stoppard to death with my laptop. What stops me is the fact that spring vacation is imminent. I know that in three weeks, I will be fairly well rested, and I will look at the work I have done this quarter, and it will be good. I will probably feel privileged to have been allowed to burn myself out. The really special thing about college, apart from the fact that it allows access to career paths that don't involve special sauce, is that you get to spend four years being yourself as hard as you can. For the last two months, I have spent most of my time writing and seen the rest of my life as a petty distraction. I have written until my brain started making this weird humming noise and then stopped working all together. I need a break desperately, but after I've healed up a little, part of me will wish I was writing obsessively again. Once I graduate, I'll have to pay attention to my life all the time. I'll have a job to do, and rent to pay, and eventually kids to pick up from daycare, and I'll have to fit my writing in around all that. I will not have the luxury of confusing art and life. I will miss the exhilaration and the adrenaline and the feeling that my muse is standing behind me all the time. I'm sure Heidi-rose will miss "Thomasina." It's possible that by then, I might, too. But at the moment, I'm just hanging on 'til the eleventh.

Aerin Tolbirt: 40 Hours

Over the last week, I have been thinking about what I should talk about in this column. I've been rather sarcastic and nasty in my previous pieces, so this week, being the first week in Lent and a good time to curb one's unpleasant ways, I am going to give instead of taking away. By that, I mean that I wish to give you tools and knowledge instead of taking away innocence and misconception, more or less. Thinking over my seminars of the past few years, I have often wished that everyone had read a few of the same general knowledge books so that the discourse on the specifics of our subject would have a common ground. I'm a manic bibliophile, but I understand that others have "better" ways to occupy their time. So as much as I'd like to list about twenty tomes of terrific tidings, I've limited myself to three major and one lesser recommendations. Any one of these gives great ammunition for seminar.

First, and arguably most important, is The Lessons of History by Will and Ariel Durant. After forty years in the study of history and

civilization, this is their "survey of human experience" in less than one hundred pages. Wow. The former Jesuit and his wife/former student cover, or at least touch on, most major subjects of life. Please, please read this, even if you disregard everything else I ever say.

Next is The Spirit of Laws by Montesquieu. If you only ever read one book of political philosophy, read this one. He discusses the whys of states and governments without assumptions about the nature of man, unlike the more famous subsequent work by Rousseau, the Social Contract. The University of California press edition has excellent commentary and new material that might be lacking in other versions.

Last, but not least, is A People's History of the United States by Howard Zinn. From the New York Times Book Review: "The book bears the same relation to traditional texts as a photographic negative does to a print: the areas of darkness and light have been

reversed." It is the grunge of American history instead of the glory that we were force fed as children.

Of less general importance than the other three, but so valuable, is Mark Twain's Letters From the Earth. The piece of that name and the Papers of the Adam Family bit are together a brilliant look at man's place in the universe and Christian faith. The treatment is so witty that I can't help but laugh while I curse humanity.

When I asked my boss, one of the most conscious and interesting people with whom I've had the pleasure of interacting, what one book she'd have everyone read, she quickly said Interbeing by Thich Nhat Hanh. A co-worker would have everyone read The Color Purple by Alice Walker. My mother would make us read Daniel Quina's Ishmael. All of these books are about relationships of various kinds. In that spirit, please take a little time to be kind to someone who needs it this week.

SPORTS

THE INTERVIEWS: KYLE NELSON

by: Shasta Smith

I'm talking to Kyle Nelson, the Athletic Trainer here at Evergreen. He keeps all the teams going. This is Kyle's first year here at Evergreen. He comes from Portland by way of California. Let's get to know him.

CPJ: So, where are you from?

Kyle: Originally, I grew up on the Oregon coast. I spent my whole life down there in a little town called Heebo. A very small town. It's one of those towns that, if you blink when you drive through, you'll probably miss it. Out of high school, I went to the University of Oregon for a couple of years, then I moved to Portland to go to Mount Hood to figure out what I wanted to do—and not spend all of my money—so I lived in Portland for about ten years. In that time I took some time off from school and just worked and explored different careers, what I wanted to do with my life. Then, I ended up going back to school at Portland State. I finished both my bachelor's and my master's degree there. I got my bachelor's in '96 and my master's in '98.

CPJ: In sports medicine?

Kyle: In a related field. Health and fitness promotion was my bachelor's and a master's in public health, and I had a minor in athletic training.

CPJ: Where'd you go from there? After you graduated?

Kyle: Once I graduated, I knew that I needed to find a job and get out on my

own. I just started applying at different positions all over the country. I applied as far as Duke, University of North Carolina, University of Maine, and Fort Kent. To California, the midwest—everywhere—and stumbled upon a position at a community college in California called Gavland Community College. Two year school, but they had seven sports, including football.

CPJ: Did you work on all the sports or did you specialize in one team?

Kyle: I was the head athletic trainer there, so I was responsible for all the sports. They didn't have very much money. They didn't have an athletic training staff. There was just one person—myself. I was the head athletic trainer, plus I was also the equipment manager.

CPJ: How was the transition from Gavland to Evergreen?

Kyle: It was very nice. The position down in California was a good step for me. It was a good experience for me to get head athletic trainer experience.

CPJ: How do the athletes you work on here compare with athletes that you've worked on at other schools?

Kyle: The athletes here are more involved, and I think they have a little more invested in what they are pursuing.

CPJ: What is the best moment for you since coming to Evergreen?

Kyle: I think the best moment so far has been... I guess a bunch of small ones... it's the times that the coaches or the athletes—maybe the athletes introduce me to their parents, or the coaches introduce me to other people, and they say, "This is our athletic trainer, and he's doing a great job for us. This is his first year, and he's doing a great job." Athletic trainers are in the backstage or behind the scenes. They don't get a whole lot of recognition, and we don't expect a whole lot. When we get something like that, it makes us feel good as athletic trainers. You ask any athletic trainer around; they enjoy getting recognition. I don't know one that doesn't. Everyone likes to get recognition, but that's not the reason we are in our job. The reason we are in our job is to take care of athletes and to make sure everyone is healthy. When we do get some small bit of recognition from people, it makes it all worth it.

CPJ: Are you interested in having students that want to volunteer or that are on contract come work in the training room?

Kyle: Yes. Definitely I would. It is one of my goals. To try to, one, add educational courses here that satisfy the requirements for becoming certified, and two, to start an actual athletic trainers' program to have student athletic trainers come in. Ideally, it would be something I could pay people for, or they could get credit. Maybe workstudy. So I could draw a good number of students in and it just elevates the amount and quality of care we can provide the athletes. We can get into that situation where if I have a couple of

students; I can send a student with a soccer team on the road, every time they go on the road, and they have one person that always takes care of them. So that helps.

CPJ: How would you go about instituting that? What is the start?

Kyle: I think just justifying true need for it, and, with the addition of three new sports in the fall of next year, that's a point in our favor. Saying, "This is what you have now. You're adding three more sports. You need to step up your support staff as well. Increase your support staff." And the acknowledgement is there. They know they need more help. But on the other side of that is obviously the funding. Whether we get the funding to support an increase in support staff. As far as the courses... I'm still getting used to the Evergreen system of education, and I'm not sure what the proper steps are to take. I've talked to the Athletic Director and the Assistant Athletic Director, and different people in the CRC, to find out what would be the best way to go about that. You could include it in an existing program like, Health and Human Performance, or another program. Maybe you can throw in a couple of athletic training courses, and at least the students get some experience through taking these courses.

CPJ: If any students are interested in athletic training, come talk to Kyle in the CRC. Maybe something can get going once student interest can get generated. Talk to your teachers and see what you can get worked out.

Would you like to be the next S&A Board Coordinator?!



- 19 hours per week
- \$5.70 per hour
- Increase you skills in:
 - management
 - group facilitation
 - consensus
- Work w/ great people!
- Gain great experience!

For more information, stop by CAB 320, or call X6221.

APPLICATION DEADLINE:
Friday, APRIL 6, 2001

SPORTS

Sports Briefs

Spring Athletics are starting up, and while there will be a lot to see and do, Evergreen's only NAIA team is tennis. On the club side there will be a myriad of teams to join and a couple to watch.

TENNIS

The season has started and the men's tennis team is showing signs of life. On March 3rd the men traveled to Ashland, Oregon to face Southern Oregon in the morning and Northwest Nazarene in the afternoon. The men started by beating Southern 9-0 and ended the day losing 6-3 to Northwest Nazarene.

The number one doubles team of Mike Butte and Mike Schor lost their opening set 5-3 but came back to send the match into a tiebreaker where they won 7-4. Both members of the number one team are new to the team and school this year.

The number two singles player, Will Tubman, rallied in the third set of his match to defeat Dan Graham of Southern 6-4, 3-6, 7-6.

Senior Neal Ahern, playing number three on the singles side, had two victories in two singles matches, beating both his Southern and his Northwest opponents.

Mike Schor, the new player from North Bennington, was perfect in the afternoon, winning both his singles matches and both his doubles. Schor was teamed with Ahern for the Northwest match-up; they won 8-6.

The men's program has turned a new leaf and is moving on up; it will be interesting to see where they go this year.

CLUB SPORTS

Women's rugby and Ultimate are two club teams that are always looking for athletes. The women ruggers are looking for that last handful of players to round out their team.

The men and women's crew teams are in full gear and have been since school started. Their regattas and duel meets start up in March and go nearly every weekend until the end of May. The team is working very hard; I had a chance to go to one of their early morning practices. It takes a certain breed of person to get up every weekday morning at 5 AM and get onto freezing cold water. It will be exciting to see how the new crew teams

ADMINISTRATION

It's house-cleaning time for the Evergreen Athletics Administration. Without the NAIA intercollegiate responsibilities weighing too heavily, the college can focus on getting money for its club teams, fundraising for the upcoming fall NAIA season, and recruiting.

The women's volleyball team, one of the new programs for the fall season, has instituted a huge fundraising/recruiting drive. Coach Bill Lash is running weekend tournaments to generate revenue and show prospective Evergreen freshmen what his system and new school are all about. There are literally hundreds of girls that are coming through the CRC and getting to see what a college gym looks and feels like.

Coach Arlene McMahon is consistently showcasing the school to prospective student athletes. Her theory is that, once the prospects see the beauty of the Evergreen campus and get a feel for the student body, they are way more likely to return to play.

Coach John Barbee and his assistant Bill Benton have a list of 50-75 prospects from the area and from around the country. Coach Barbee is looking for specific elements to flesh out his team. "This makes the recruiting process that much harder," Coach Barbee said, "because you are looking for the right player, not just another body to train." The team is looking for some size to hit the boards hard and a point guard who can come in and help run the offense. Coach Barbee has had good success in California (Trelton Spencer) and will be hunting down there for more star talent. The problem with recruiting in and to Washington is the 12 schools that the players can choose from. The players that are highly coveted can pretty much pick where they want to go.

NEW MASCOT PICTURE

In other news, the administration plans to make the school mascot more visible to the public and to the campus. Matt Groening and his brother were hired to draw a picture that could be put on the gym floor and around campus on T-shirts and the like, but they backed out. There is talent working on the image, so don't be surprised to return next year and see the mascot everywhere.

SHASTA'S CORNER

AXIOMS: TRUE or FALSE
by: Shasta Smith

Axiom 1: Boxers traditionally abstain from sex for days, weeks, or months before a fight to save energy.

True. I understand the term "wobbly knees;" it's factual, and not just during the earthquake.

Axiom 2: Athletes are meathead jocks.

False. Well, sometimes. A lot of athletes are intelligent, creative, even sensitive.

Axiom 3: Team names matter in sports.

Absolutely true. Raiders, Strikers, United, Bears, uh...Geoducks?

Axiom 4: Evergreen teams are losers.

False. Not anymore; not since the kung fu team started the winning streak and went to the World Championships. Not since Dave Webber took over and new coaches are coming in with enthusiasm. Not since Shasta covers it all on Shasta's Evergreen Sports Show and in the CPJ sports section.

Axiom 5: Eddie Haskel is dead.

False. He is alive and well and living at Evergreen.

Axiom 6: Uniforms matter; color and design is important.

True. Black warm-ups and dark green tops for Women's Soccer, Arlene rules. Men's soccer: teal green and white. You make the call.

Axiom 7: Evergreeners are "pot heads."

True. There were a group of students who called themselves the "pot heads." They attended home basketball games banging pots with wooden spoons.

Axiom 8: You can even get credit at Evergreen for hanging your clothes.

True. I've got my sports jerseys hanging behind me on my sports show while I'm talking, editing, and bringing you sports news.

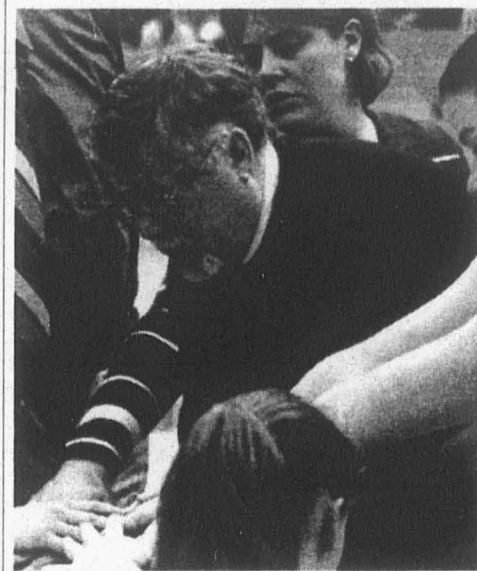
Axiom 9: You can't have sex on a trampoline.

False.

Axiom 10: Shasta can't walk and chew gum at the same time...

False.

Coach Harden



by Shasta Smith

The Evergreen State College Department of Athletics and Recreation announced Friday, March 2, not to renew women's basketball head coach Rick

Harden's contract for the 2001-2002 season. This is the end for the only women's basketball coach thus far. Harden, a former three time coach of the year in Australia's National Basketball League, couldn't seem to get it going at Evergreen, ending with a 13-95 record.

Coach Harden will remain the tennis head coach through the 2001 season.

The administration is looking to fill the open coaching position as soon as possible. The athletics department wants to offer a full-time position at the college, combining the women's basketball coach position with a current full-time job that is open in recreation. Evergreen plans to bring all of its coaches into the college in full-time positions eventually. John Barbee, the men's basketball head coach, already fills that role and with the women's basketball spot open, another basketball coach can get to work full time here as well.

SPORTS SWIMMING

by Shasta Smith

The man and women's swim team did exceptionally well at the NAIA National swim meet in Burnaby, Canada. The women improved six places from last year to finish 8th overall. Ryan Miyake the entirety of the men's swimming team, showed the power of one and placed 10th overall on the men's side, beating out two other teams.

"The noisy atmosphere generated enthusiasm for the team and made us swim well" claimed Coach Bendock. "It's a small facility, so the crowd feels like it's right on top of you." The meet was a big mix of teams, some of which were huge. Evergreen was the smallest school there as most every school fielded at least one men's and one women's relay teams.

Ryan Miyake had been battling a cold going into the meet but still swam tough. His top finishes were both 6th as he did extremely well in the 200 fly (2:14.11) and the 1500 free (17:18.65).

Senior Captain Bonnie Martin did outstandingly, finishing in the top 6 in the 200 breaststroke; she finished with a time of 1:20.85. She did very well anchoring the relay team as well giving season best split times. As a special honor, Martin was awarded one of six NAIA Scholar Athlete awards for the 2000-2001 season, this is the second year in a row Martin has received this honor.

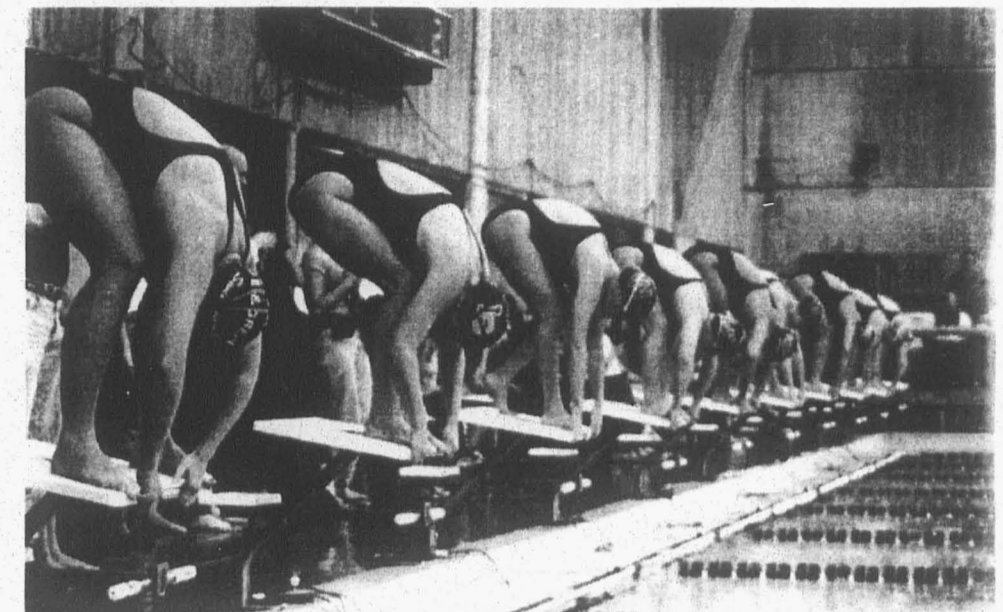
Amber Totz placed 11th in the 100 fly with a 1:11.53. She had some fierce competition on her way up through the ranks before she placed in the top twelve.

Misty Westphal toughed out a hurt back to place 2nd, 3rd, and 4th. In the 400 free, Westphal placed 2nd with a 4:32.94. In the 1500 free, she placed 3rd with a 17:57.70, and in the 200 free, Westphal captured 4th with a 2:09.06. Westphal had seen a doctor for painkillers before the meet, but they made her nauseated, so she toughed it out and swam excellently. The Olympia native wanted a first place finish and is hungry to return next year.

Alison Aylesworth had very solid performances in her leg of the relays, helping the team to its great success. Aylesworth had an eye-opening experience and will be ready to race in the singles events next year. The women's relay team had season best times on all their races. The top finishes for the four women were a 7th in the 800 free with a 9:40.88 and a 7th in the 400-medley relay with a final time of 4:48.46.

The swim team returned with 13 top 12 finishes. "The team received lots of compliments on its progress," said Coach Bendock. "We can do better with more conditioning though, and a larger team, recruiting will help. The NAIA values that you hear about were evident at the meet. Everyone was screaming bloody murder when the race was on, but afterwards, swimmers would shake hands and congratulate each other. The sportsmanship added an electric element to the races and made it a real positive environment for the swimmers."

Congratulations to the swim team as their 2000-2001 season draws to a close.



Swimmers ready to race at the Northwest Conference finals held here at Evergreen. Notice the Evergreen cap on the near swimmer. Evergreen was swimming exhibition in the races.

Mens Basketball

by Gin Harbold and Shasta Smith

The men's season has drawn to a close, but not quite in the fashion we had hoped.

Evergreen men's basketball had a heartbreaking loss in their first round playoff game against Southern Oregon. Trelton Spencer, the most talented player that Evergreen has ever seen, and the two other seniors who worked so hard for a championship ring, missed their last chance. The game ended 94 to 85. Trelton Spencer finished the game with 21 points and his career with 1740 points. Spencer holds five single game, nine single season, and twelve career records for Evergreen

basketball. Andre Stewart played exceptionally well again, scoring 29 points and grabbing 10 rebounds. Stewart also became the sixth player ever to score 18 consecutive freethrows without a miss in one game, an impressive feat from next year's team leader.

Coach Barbee said it was a good game and is disappointed that the season is over. Assistant Coach Bill Benton had some really good comments. "We really grew as a team this year," he said. "The loss of Trelton is going to be big for us, but we bring back a lot of experience next year that hopefully we can take with us and use. I'm proud of the effort night in and night out."

THE EVERGREEN ATHLETE'S UNION

Due to the earthquake, the first meeting of the Evergreen Athletics Union will be on Wednesday March 14th at 3PM in CRC 112. Sorry for the inevitable delay. If you have any questions contact Ronen Johnson or Shasta Smith at RonenJohnson@aol.com or smisha13@evergreen.edu.

RETIREMENT INSURANCE MUTUAL FUNDS TRUST SERVICES TUITION FINANCING

Why is TIAA-CREF the #1 choice nationwide?
The TIAA-CREF Advantage.

Call us for a free information package

Year in and year out, employees at education and research institutions have turned to TIAA-CREF. And for good reasons:

- Easy diversification among a range of expertly managed funds
- A solid history of performance and exceptional personal service
- A strong commitment to low expenses
- Plus, a full range of flexible retirement income options

For decades, TIAA-CREF has helped professors and staff at over 10,000 campuses across the country invest for—and enjoy—successful retirements.

Choosing your retirement plan provider is simple. Go with the leader: TIAA-CREF

THE TIAA-CREF ADVANTAGE
Investment Expertise
Low Expenses
Customized Payment Options
Expert Guidance




Ensuring the future for those who shape it.™

1.800.842.2776

www.tiaa-cref.org

For more complete information on our securities products, call 1 800 842 2733, ext. 5509, for prospectuses. Read them carefully before you invest. • TIAA-CREF Individual and Institutional Services, Inc. and Teachers Personal Investors Services, Inc. distribute securities products. • Teachers Insurance and Annuity Association (TIAA), New York, NY and TIAA-CREF Life Insurance Co., New York, NY issue insurance and annuities. • TIAA-CREF Trust Company FSB provides trust services. • Investment products are not FDIC insured, may lose value and are not bank guaranteed. © 2001 Teachers Insurance and Annuity Association - College Retirement Equities Fund, New York, NY 01102



Obtain your graduate degree from the University of Washington, Tacoma

We offer graduate programs in:

- Master of Business Administration
- Master of Arts (interdisciplinary studies)
- Master of Education
- Master of Nursing
- Master of Social Work

as well as post-baccalaureate programs for:

- Teacher Certification
- Educational Administrator/Principal Certification

Convenient downtown Tacoma location and outstanding UW faculty!

For more information and an application packet, call
(253) 692-5723
or visit www.tacoma.washington.edu

GEN ED

continued from page 4

time: the drop out rate for freshman in spring quarter and a lack of access to diverse classes for all students.

CORE classes are mostly made up of freshmen. 17% of Evergreen's freshmen leave the school entirely during their freshman year. Out of the students that stay in year-long CORE classes, 40% leave their program during spring quarter. Based on these statistics and student input, the DTF has come to the conclusion that year-long CORE classes are not working for students, no matter how much the faculty like them. To remedy this problem, the DTF proposal asks for more two-quarter, cross-divisional, all level classes instead of three-quarter long CORE classes.

Student access is a problem year round at Evergreen, but it too is worse in the spring. When 40% of these CORE class students leave their programs, there are very few places for them to go to. The amount of teachers that a program has is relative to the amount of students in it. Since there is a 25-1 teacher-student ratio here at Evergreen, a class with 25 students has one teacher, and a class with 75 has three. However, when nearly half of those 75 students leave in spring quarter, their teacher stays. Sometimes their teacher takes on contracts to make

up for the students s/he has lost. This, of course, means that the teacher has over twice as much work to do, making it unfair to the teacher, the students who stay, the students who leave, and the students who take contracts with her/him. But not all the students who leave want, or can get, a contract. Who is expected to teach those students? The problem of these "lost" students is exasperated by the fact that, of the 40% of teachers who teach CORE and all-level classes 90% have pre-requisites during spring quarter. Besides this, there is the problem I mentioned at the beginning; there is not enough access for students who wish to experiment in general.

"The Gen Ed DTF proposal asks for... 40% of the faculty to drop all pre-requisites for spring."

To remedy all three of these issues, the Gen Ed DTF proposal asks for the bottom 40% of the faculty to drop all pre-requisites during spring quarter. It's a free-for-all learning situation every spring (at least for the 40% of the school who choose to participate.) This allows freshman students to move freely during spring quarter, evens out the student to teacher ratio, and most importantly, gives all students the opportunity to experiment with new subjects by creating more truly cross-divisional classes without pre-requisites.

This is a very loose proposal, aimed at opening up opportunities

for everyone without posing undue restrictions on anyone. While providing more chances for students to experiment with different subjects, it also still allows faculty to teach year-long programs, upper-division programs, short, in-depth programs and individual contracts. *It does not impose any type of restriction or requirement upon the students.* Rather, since Evergreen professes to believe that students should control their own education, and that students will make good decisions regarding their education if given a chance to, the DTF also believes that

"...students need to be given in reality what they are provided in theory..."

world, we must speak to our funding source. We can find ways of doing so that are subversive and adhere to our educational standards, but we must answer somehow. Without state funding, only the wealthy would be able to take advantage of Evergreen's education, making Evergreen elitist by economics if not theory. Third, and most importantly, students and students about what Evergreen should look like. It is not permanent. Should it not work, it will be disassembled and a new curricular approach will take its place.

The proposed Gen Ed changes have not been created just because of our accreditation process. First of all, the accreditors based their report on the faculty self-studies (which are like faculty-school evals) that

planning units write every year. For the past ten years (roughly), faculty have written in these reports that they believe students are not getting enough breadth—Science students don't get art, and vice versa. This points to at least nominal faculty acceptance of the breadth/access problem. Second, the Gen Ed DTF is also responding to a state mandate that all state learning institutions must have "learning outcomes" for their students and a plan to address said outcomes. As much as Evergreen would like to ignore the assumptions and ideas of the outside

world, we must speak to our funding source. We can find ways of doing so that are subversive and adhere to our educational standards, but we must answer somehow. Without state funding, only the wealthy would be able to take advantage of Evergreen's education, making Evergreen elitist by economics if not theory. Third, and most importantly, students

need to be given in reality what they are provided in theory—cross-divisional learning and a chance to control their own education.

If these reasons—especially the last—are not enough to convince Evergreen faculty and students that they should try a five year change in curricular planning, then perhaps we should change the five foci to reflect how the school is really run.

The REGENERATION of Education

Commentary by Jason Adams

Dear Working Class Greeners, Do you work your ass off just to scrape by as a student at Evergreen? Do you loathe the fact that so many wealthy students who go here don't have to work at all and have a lot more time to finish assignments than you do? Do you ever look around you and wonder why there seems to be fewer and fewer working class students and students of color in Evergreen's ranks? Are you ready for things to get EVEN WORSE THAN THEY ARE?

On Friday, April 6, do yourself a favor and come join up with hundreds of fellow students, teachers, teaching assistants, campus workers, and supporters from across the state of Washington in a mass protest to protect access to higher education for low-income people (like yourself) and to demand decent salaries, wages, and working

BUBBLE

continued from page 9

not having more say in the mandate. (more at /ens.lycos.com/)

Web activists targeted the web site of a US investment bank which saved a controversial drug testing company from liquidation with an attack designed to make its site unavailable to web users. The investment bank, Stephens, provided finance to Huntingdon Life Sciences in January after the Royal Bank of Scotland withdrew the firm's overdraft following protests by animal rights activists. The attack was organized by the Animal Liberation Internet Tactical Response Network, using a hacking tool called Floodnet that sends a barrage of repeated download requests to the site, making it too busy for others to use. (more at /www.theregister.co.uk/International)

The world's largest stone Buddha, a 175-foot tall statue carved out of a mountainside in Afghanistan, was demolished by artillery fire last week. The ruling Taliban government made the move in response to a decree issued by Mullah Mohammed Omar, the Taliban's spiritual leader, which stated that all idols were to be destroyed because they were un-Islamic. The statue was built in the 3rd century. The decree has rekindled international outcry against the Taliban, which in the past has been directed at the Taliban's severe repression of women and religious groups. (more at /www.observer.co.uk/)

Rural Colombian farmers and villagers are enraged at the massive destruction of food crops as well as rashes and vomiting following blanket pesticide spraying aimed at eradicating coca, the plant used to make cocaine. The spraying is being funded by the US's "Plan Colombia," a \$1 Billion military aid package ostensibly initiated to eliminate coca production in Colombia. The plan has also been widely criticized by human rights groups for strengthening the power of Colombia's corrupt military. (more at /www.guardianunlimited.co.uk/)

conditions for all who work in the education industry.

The Governor claims that budget cuts from 1-695 and other initiatives leave no option but to either raise tuition, cut wage and salary increases for education workers, or decrease social services. We are standing up on April 6 to let Locke know that we won't let him define the parameters of this debate. We want to know what isn't even being considered for cuts. We want to know why \$6.34 billion—24% of the state budget—is being spent on tax breaks and other subsidies to for-profit corporations in the timber, computer, and other industries, and why this massive corporate welfare is not even being considered as a place for cuts instead!

Since most people haven't heard about this (hmm, why would that be?), let me go over a few of the basic points in Locke's budget proposal: 1) tuition caps will be raised by 10%

annually and by 40% over six-year periods; 2) control of tuition is taken away from the legislature (who are at least nominally accountable to students) and given to appointed officials—such as regents—instead; 3) allows different tuition rates to be set for different majors, i.e. engineering classes would cost more than art classes. This would force low-income students into cheaper majors, which have lower expected earnings at graduation; 4) it allows unlimited tuition increases for graduate and professional programs. Some administrations have already stated that, if this aspect of the bill passes, tuition for some programs will double within the next 3 years. Thought you might want to become a teacher? Locke thinks you should think again.

Some people think that tuition increases don't exclude anyone because of the old myth that "financial aid goes up when tuition

goes up." This is patently false. For instance, at UW, tuition is \$3,761. There, 25% of in-state students qualify for financial aid. At the University of Illinois, tuition is significantly higher at \$5,020—only 17% qualify for aid. At the University of Michigan, tuition is a whopping \$6,513, and there, financial aid is even less, as only 16% qualify for aid. Clearly, as tuition goes up, low-income attendance at a college or university goes down. Also, tuition increases hit women and people of color the hardest. Since I-200 (which abolished Affirmative Action) passed in California in 1997, minority enrollment has nosedived by a whopping 32% despite administration promises not to let enrollment go down. That was enough of a blow; this increase will make it much worse. We cannot allow this to go through – we won't go back to the bad old days! For more information, call me at 866-6106, email me at ringfingers@yahoo.com or visit http://depts.washington.edu/asuwola/

was amongst those killed last week in the continuing conflict in Israel. A Palestinian suicide bomber killed himself and three other people and injured dozens of others, which sparked the lynching of another Palestinian man later in the day. (more at /dailynews.yahoo.com/)

Thousands of anti-globalization activists converged on Italy's Group of Eight (G8) ministerial meeting last week in a protest remarkable for its lack of large-scale arrests or tear-gassings. The G8 summit is a meeting between the leaders of the world's 7 richest nations, plus Russia. (more at /asia.dailynews.yahoo.com/)

U.S. personnel have become involved in fighting in Colombia's 37-year civil war for the first time two weeks ago, rescuing the crew of a helicopter brought down by left-wing guerrillas. The US is funding the world's largest aerial eradication program in an attempt to destroy drug crops in Colombia. In an engagement last week, guerrillas of the Revolutionary Armed Forces of Colombia (FARC) fired on a crop-

dusting aircraft and supporting helicopters, downing one of them. Before U.S. personnel were rescued, they engaged in a brief firefight with FARC guerrillas. Critics have pointed to this incident as the U.S. crossing the line between counter-narcotics and counter-insurgency. (More at /commondreams.org/)

Nike admitted that its Indonesian workers suffer widespread verbal and physical abuse at its factories. A report funded by Nike found workers at the nine factories studied were bullied, forced to work overtime, and had limited access to health care. Workers also reported that some of them were punished for being late by being made to clean toilets or run around factory grounds. There were also widespread reports of female workers being coerced to perform sexual favors, and that foremen and managers fondled assembly-line workers. About 85% of workers in Nike's contract factories in Indonesia are women averaging 23 years in age. (More at /news.bbc.co.uk)

The Women's Resource Center

Invites you to Intern this Spring!

Job Description: Primarily to create a space in the WRC making it possible for women to network and collaborate. The intern will be expected to work closely with the three coordinators in order to further the goals of the constituents.

Possible Activities: Creating publicity for the center, special projects, facilitating conversations, organizing and training volunteers.

Expectations: The intern will be expected to find a new intern for the next year. This is a full time internship with an academic component.

Inquire with Mary Craven x5222

Application Deadline: Monday, March 12th @ 5 p.m.

FREE PREGNANCY TESTS



Now at all Planned Parenthood health centers

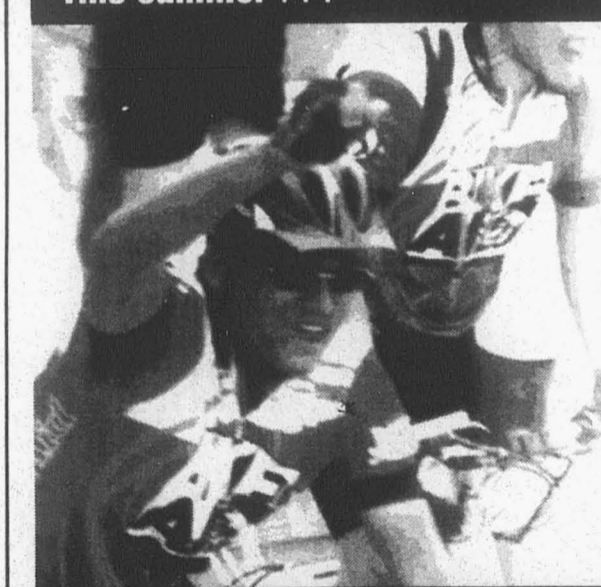
If you've missed a period or think you're pregnant, don't wait. Find out. Our medical staff can help.

- Totally confidential
- Just walk in
- Have your results in minutes

Look in white pages or check out our website for center near you.

Planned Parenthood®
1-800-230-PLAN
www.ppww.org

This summer...



Ride Question Take Action!

Join JustAct and Ride for A Change!

Join us on a 3-route, cross-country bicycle ride that combines

- Global Education
- Community Living
- International Solidarity
- Anti-Racism Trainings

For more information, call 1-800-RIDE-808 or email laura@justact.org. Or visit us at www.bikeaid.org.

Responding to RESPONSIBILITY

By Shasta Smith

This is in response to the article "Where's the responsibility", written by Aaron Anderson in the CPJ edition 17.

Anderson insultingly refers to me as "Evergreen's beloved Captain Kung Fu" and insults all honest students with quotes such as "If your personal sense of integrity doesn't keep you from being a thief (and you are a thief, don't kid yourself)..." He also belittles students' protests against Fine Host with the quotes, "Take it like an adult, and quit crying," and "Now stop your damn whining, you child."

Are ALL Evergreeners liars and thieves? Do you think no one is telling the truth? Should no one protest possible violations of

human and civil rights? Are you judge and jury?

Have you seen the multitude of letters and articles that have appeared in the paper? To disregard what students say repeatedly is ignorance to the highest degree. I am fighting against the assumption that all Evergreeners are liars and thieves. Who are you to disregard people's discourse on a problem that exists? Where are you coming from? What are your ethics? Are you a Greener? Are you a mainstream, right-wing, Bush voter?

This is about freedom of speech, about fixing problems that affect the Evergreen community. Instead of making assumptions of who and what people are, try finding out what really happened.

SATIRE End overseas Sweatshop Labor; bring it here.

by Moe Dibinidly
Nom de plume of Russell Garofalo

As you have surely heard, there is great concern over the sweatshops that produce goods for the Evergreen bookstore. I share in this concern. Poor people in lands of which we likely know little about are trudging away for just enough money to stumble home to a meager existence.

This situation is simply reprehensible. Why not have in-house sweatshops? Local sweatshops? Why go overseas when the myriad of benefits of sweatshop labor would be increased tenfold by moving them into the community? Although our local community only boasts a 1.3% minority rate (statistics care of F.U.C.D.*), there are certainly sufficient people already here from countries we still know very little about. The

changeover can be made immediately; we will erect a small circus tent-like covering, similar to the one set up for smokers by Adorm. Of course, this will only be temporary, but this winter has been rather favorable as to temperature and rainfall, which may be a sign of years to come.

Soon thereafter would come establishing a permanent structure in what is now the outdoor eating area of the Greenery. It will be constructed entirely out of Plexiglas. I can only guess at the flood of students wanting to do contracts involving our new Plexiglas Allied Laborers Studio, (P.A.L.S.). We can recreate the industrial bar-room atmosphere that seems to be so well loved overseas, complete with mood-enhancing exhaust that fosters the instinctual vigor of full bladders. The time with our P.A.L.S. will be an ongoing exhibit. A cultural view over a nice lunch that came from somewhere else. Reflect and envision: the assembly lines of Henry Ford, the comforting redundancy imagined by Laverne and Shirley, the efficiency and great abilities of the Third Reich. Viewing the members of the studio, working diligently, will provide a cathartic experience that is severely undernourished for students of the college.

The value is as infinite as the tangential thoughts of the viewer of our P.A.L.S. So I will not press on, but just let this out to flourish like the mighty evergreen does.

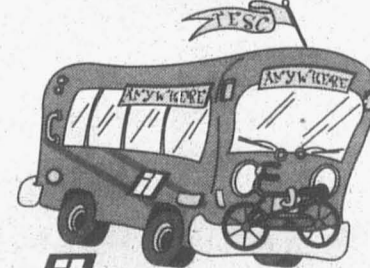
*Foreigners, Up and Coming Development.

PISSED OFF?

Submit to the CPJ to get your opinion heard!
Bring your articles or artwork up to our office on the third floor, dammit.

Oh, the Places You'll Go on Intercity Transit!

Show your Evergreen student ID when you hop an I.T. bus and ride free. It's that easy! Skip the parking hassles, save some cash, and be earth-friendly. I.T. is your ticket to life off campus! For more info on where I.T. can take you, pick up a "Places You'll Go" brochure and a Transit Guide at the TESC Bookstore. Or call I.T. Customer Service at (360) 786-1881 or visit us online at www.intercitytransit.com.



Intercity Transit
Fares paid through student programs.

CALENDAR

Thu, Mar 8

It's a veritable nuthouse of nuttiness, music, seduction, nuttiness, speech impediment, an ocean liner, and nuttiness in Tom Stoppard's "rollicking farce" *Rough Crossing*. "Lose your blues on an ocean cruise." Runs through the 31st at the State Theater, Call 786-0151 for ticket info, \$15-\$22. "Don't miss the boat."

7 P.M.

Wanna be on TV? Shit, *yea*. Dance O' Dance invites one and all to participate in their live monthly taping. Go to Studio A, 440 Yauger way at this time. Call 866-4524, or visit www.danceodance.com.

In the "Edge." In "A Building." *Yea*. See *Tough Guise*, a "radical film that identifies the relationship between the images of popular culture and the social construction of masculine identities..." A discussion will follow. *Yea*. Call x5517.

Sat, Mar 10

11 A.M.

The Procession Community Art Studio, down on South Central, yo, is open for the you, the community, yo. There's a volunteer meeting, right now. Call 705-1087.

Noon

Begorrah! The Olympia Parks Dept. is holding their 16th annual Irish Cottage Fair at the Olympia Center on 222 North Columbia. Free

admission with a canned food donation. Irish music, Irish stories, Irish everything. Call 753-8380.

7:30 P.M.

It's the OLYMPIA OLD-TIME COUNTRY DANCE!!! The dances will be an "[intriguing, seductive, and also] interesting mix of Contras, Squares, and Big Circle styles." At the South Bay Grange. \$6 at the door, \$3 cheaper for the young and old. Call 357-5346. "...feel welcome."

Sun, Mar 11

The Olympia Film Society goes crazy! *State and Main*, starring Alec Baldwin opens at 4 and 9 P.M., and *Show Me Love*, Swedish, opens at 6:30 P.M. Wait a minute; is this stuff going on? I thought the Capitol Theater's Roof fell in. You should call them; they're in the book.

Mon, Mar 12

6:30 P.M.

"How do we address and treat a population that has been diagnosed with Co-Occurring Disorder?" Greater Lakes Mental Healthcare is holding a free "Mental Health Monday," concerning Substance Abuse and Mental Illness. That's a double-whammy. At Lakewood Library, 6300 Wildaire Road.

Wed, Mar 14

5:20 P.M.

There's not much space left in this column, so I'm going to start writing

now...Mindscreen is hosting John Waters' film *Pecker*. In Lecture Hall One! "Free Popcorn and Movie! Whoo Ha!"

Thu, Mar 15

Today is deadline to submit to the Word and Deed writing anthology. Get your stuff dropped off at the Learning Resource Center by NOW! ...don't forget the CPJ, geez...

If you don't write, then you can submit YOUR BLOOD. Darlene at the Student Health Center would like you all to know that the BLOOD BANK will be on campus today from 10 A.M. to 4 P.M. Call x6804.

Fri, Mar 16

6:00

At the TESC Tacoma Campus, internationally acclaimed classical pianist Dr. William Chapman Nyabo, and also internationally acclaimed gospel organist Dr. Ruth Kelly play a benefit for homeless women and their childer. \$25. Call 383-7791.

Sun, Mar 18

The Olympia Film Society goes crazy! *Quills*, directed by Philip Kaufman, opens at 4 and 9:30 P.M., and *House of Mirth*, with (oh lordy) Gillian Anderson AND Dan Aykroyd, opens at 6:30 P.M. Wait a minute; is this stuff going on? I thought the Capitol Theater's Roof fell in. You should call them; they're in the book.

Mon, Mar 19

6:30

"Curious about astrology? Don't know where to begin? Well, here it is." There's a free astrology workshop at Radiance Herbs and Massage, taught by Rosie Finn. Call 705-1430. Amazing how our personalities and actions are determined by the organization of galactic bodies. It's even more amazing when you consider that those objects, of which there are an uncountable number, happen to affect us only when they line up in certain ways viewable from earth, which is only one of those uncountable bodies among bajillions. Incredible.

Ongoing Stuff

It's International Women's Week. The last two days, anyway. The Coalition of Sexual Violence and the Women's Resource Center had things going on. This might be too late. Damn natural disasters.

Burrito Heaven is providing entertainment as well as burritos this month. Blues and Folk every Friday, Karaoke Saturdays and Sundays.

Oscar Soule has tickets to Mariner's Opening Night at Safeco Field April 2nd. Anything you pay above the \$15 that it cost Oscar to buy the tickets will go towards the TESC Jackie Robinson Scholarship. Get 'em while they're hot in LIB 1411.

Student Group Directory*

- More info: Whitney Bindreiff 888-2166 or x6636
- Amnesty International**
International human rights org. working to free prisoners of conscience, ensure fair trials, and promote justice.
Meeting times: 5 P.M. every Monday in CAB 310
More info: x6724
 - AFISH**
Advocates For Improving Salmon Habitat welcomes all interested in environmental & salmon issues.
Meeting times: 4 P.M. Mondays in CAB 320
More info: CAB 320 or x6105
 - ASIA**
Asian Students in Alliance welcomes everyone.
Meeting times: 1 P.M. every Wednesday in CAB 320
More info: Emiko Atherton, Miral Ghimire at 867-6033
 - Bike Shop**
We are a volunteer operated, do-it-yourself bike shop.
Meeting times: Call or stop by; schedule is on door
More info: Ari or Jayro at 867-6399
 - Capoeira Angola**
Meeting time: Thursday 6:30 P.M. in Lib 4300
More info: C.J. Hanekamp at 866-4811 or hanekamc@evergreen.edu
 - Common Bread**
We are a Christian Community working for justice and peace.
Meeting times: 5 P.M. every Monday in CAB 110
More info: Julie Boleyn 943-9144
 - Evergreen Animal Rights Network**
To promote the ethical treatment of animals.
Meeting times: 5:30 every Tuesday in CAB 320
More info: Laurel and Tom 866-6000 ex.6555
 - Evergreen Dance Team**
Meeting times: Wednesday, 2-4 P.M. in CRC 316 and Thursday 3:30-5 P.M. in CRC 116
 - Evergreen Investment Club**
Meeting time: Thursday, 2:30 in CAB 315
More info: Andrew Bucher, Adam Smith-Kipnis, 786-9161
 - Evergreen Students for Christ**
To Understand, To Grow, To Serve.
Meeting times: Tuesdays 7 P.M. in LIB 1507.
More info: ESAC@aol.com
 - The Evergreen Swing Club**
We teach East Coast Swing and Lindy Hop basics. We welcome beginners, and you don't need a partner!
Meeting times: Friday, 7 P.M. on the first floor of the library
More info: David, 866-8324; Kristina, 867-4939
 - Evergreen Queer Alliance**
Meeting times: 5 P.M. Tuesday (Gen. interest) in CAB 314; 5 P.M. Wednesday (Film Fest planning)
More info: 867-6544 evergreen_queer_alliance@hotmail.com
 - Feminist Majority Leadership Alliance**
We work towards the goal of having political, economic, and social equality for women.
Meeting times: 1 P.M. every Friday
 - Giant Robot Appreciation Society**
Evergreen's Anime Club! Screenings Friday, 8 P.M. at the Edge
More info: Ken Koontz squirrelfox@hotmail.com
 - MEChA**
The Chicano student movement of Aztlan strives to create a space where members can educate themselves, inform others, and confront issues.
Meeting times: 2 P.M. every Wednesday
More info: x6143
 - The Middle East Resource Center**
Meeting times: 4 P.M. Wednesdays in CAB 320 in office 15.
More info 867-6033
 - Evergreen Medieval Society**
Students interested in recreating medieval martial arts, crafts, and performances.
Meeting times: 5:30 P.M. every Thursday in CAB 320
More info: medievalistsociety@mail.com 866-6000 or x6036
 - Mindscreen**
Free movies on campus
Group meetings 3:30 P.M. every Wednesday in CAB 320; Free movies every Wednesday at 5:30 P.M. in Lecture hall 1
More info: x6480
 - Slightly West Literary Magazine**
We publish TESC's Literary Mag.
Meeting times: 2 P.M. Monday, 9 P.M. Thursday
More info: Patricia Kinney, Jen Levinson x6480
 - Umoja**
An activities and support group for all students of African descent.
Meeting times: 1-3 P.M. on Feb. 21, March 14, April 4, 18, May 2, 16, 30
More info: Umoja office, x6781; Cossetta Stroud, (360) 455-0470; Loretta Bradley-Allen, (360) 352-9906
 - WashPIRG**
We run environmental, social, and consumer campaigns.
Meeting times: 4 P.M. Wednesday in Lecture Hall rotunda
More info: Rebecca x6058 evergreen_washpirg@hotmail.com
 - The Wilderness Center**
We run trips outside (rafting, rock climbing, hiking, snowshoeing) as well as skill
 - Women's Resource Center**
A resource center that provides meetings, a library, events, and a drop-in center.
Meeting times: general meeting Monday, 3 P.M.; Zine meeting Monday, 5 P.M.; Evergreen Cliteracy Foundation, Wednesday 3 P.M.
More info: x6160
- *This list is not comprehensive. If you want your student group listed, drop off your information at the CPJ (CAB 316)

"in its sharp intelligence and dumbfounding honesty, it's unlike any play about our deep racial divisions that I've ever seen."

- Chicago Tribune.

NOW THROUGH APRIL 14

SPINNING INTO BUTTER

BY REBECCA GILMAN MARCH 5 THRU APRIL 14
DIRECTED BY RICHARD E.T. WHITE

Stage Voices

MARCH 10, 2001 AT 4:30 PM
JOIN US FOR A FREE INTIMATE AND LIVELY DIALOGUE WITH REBECCA GILMAN



UNDER 25? ONLY \$10!

FOR TICKETS CALL: 206-443-2222
OUTSIDE SEATTLE: 877-900-9285
TICKETS ONLINE: WWW.SEATTLEREP.ORG

GOOMIX

after the quake...



EVERGREEN?
FULL OF DIRTY
HIPPIES, IF
YOU ASK ME.

TOWNS FOLK



YOU CAN
GET AWAY
WITH
ANYTHING
THERE.

PAST FACULTY



FULL OF
DIRTY HIPPIES.
KILL THE
HIPPIES!!

DIRTY HIPPIE



I LOVE THE
COLLABORATIVE
LEARNING AS WELL
AS THE HOLISTIC
CURRICULUMS!!!

EVERGREEN PRE-FROSH

MAKING eyes: a purpose

once i ran out of
toilet paper before
i finishad

wiping



making-eyes@hotmail.com

stips

making eyes: yes

no that wasnt me
last night.

making-eyes@hotmail.com

stips

A COMMON LAMENT ©DARA 2001



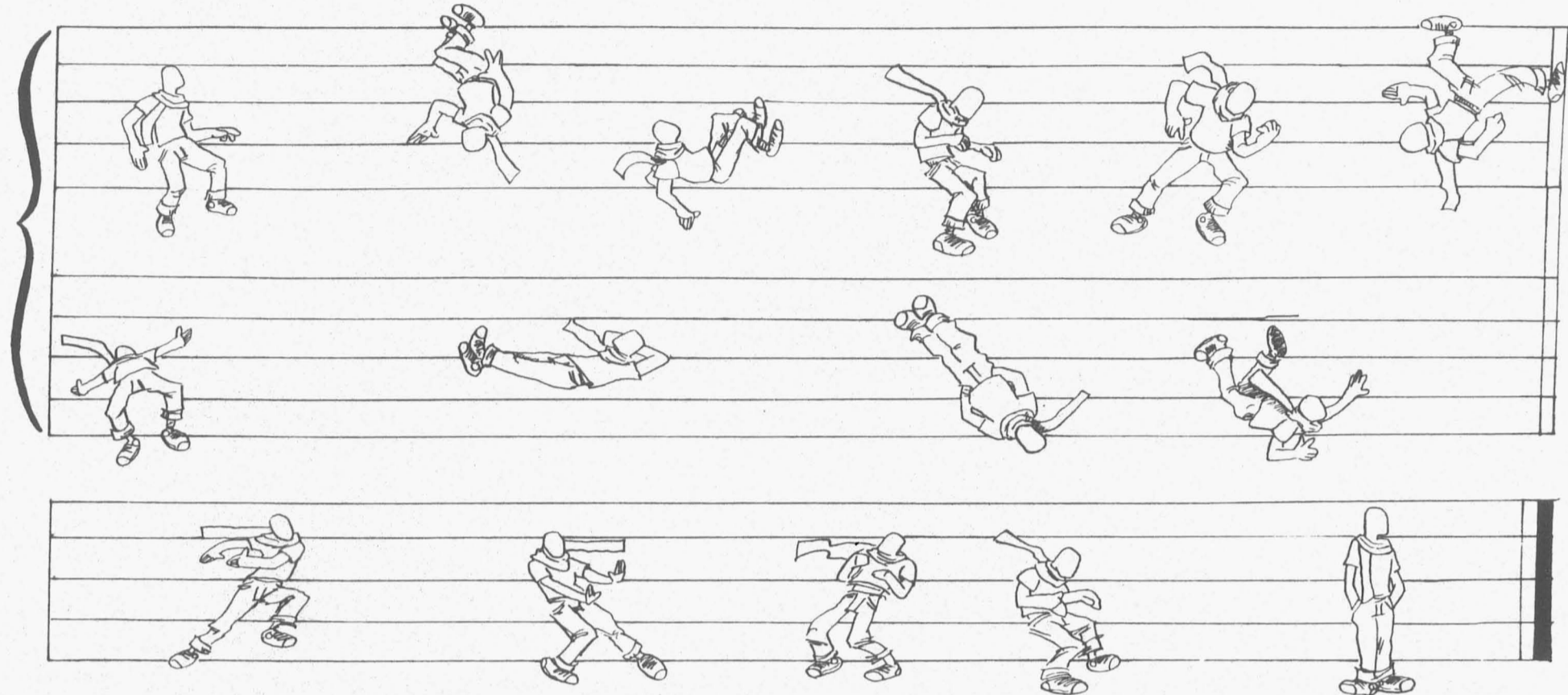
MAN, IF I WAS
SCIZOPHRENIC, THIS WOULD
HAVE BEEN DONE AGES AGO...

Nathan Smith ©2001

by Nathan Smith

Cracked HEAD COMIX

the SHAP



the SHAP



making eyes: singing sign
a different colored belt
and i would be in
an army.

Joshua

making eyes: didnt stop
I was scared of
the locker rooms

Joshua

The Shape by Ryan Buck

after
after
after

COMIX!

RUSE

D. BOUDINOT



carefree.

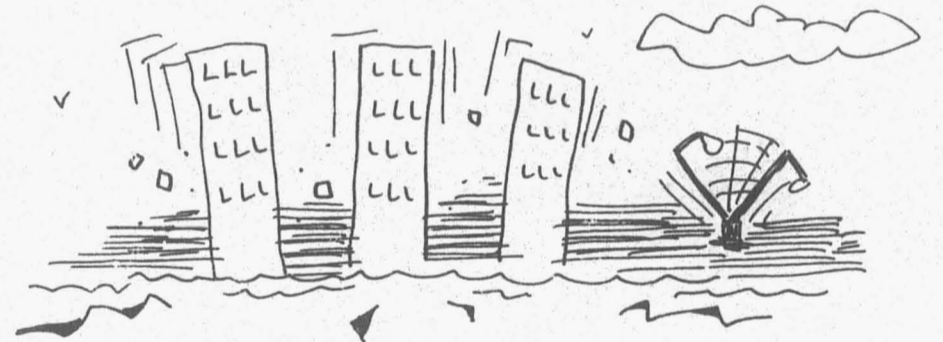
©2001 DB electronic mail: dboudinot@excite.com

making eyes: speaking
"fuck the next three months"
-Joshua
making-eyes@hotmail.com

making eyes: asking
"i thought she liked it."
stips
making-eyes@hotmail.com

making eyes: spare time
"what do you do for fun?"
Joshua

making eyes: perhaps
"maybe if you hadnt come on to me. I wouldnt be so messed up."
Joshua



Making Eyes by Joshua Eberle

gingerbread by Dara

SPREAD THE WORD...
THESE BE COMIX OF TRUTH

