

Trustees seek new TESC Pres.

The Board of Trustees of The Evergreen State College invites nominations and application for the position of President. Daniel J. Evans, Evergreen's President for the past six years, has been appointed to the United States Senate, and the college is now looking for a person of prominence and proven excellence as a leader.

In its first twelve years, Evergreen has built its reputation as a publicly-supported, quality arts and sciences college featuring intensive, inter-disciplinary, team-taught programs of study. It emphasizes critical reasoning and problem-solving, much serious writing, cooperative self-directed learning, and narrative evaluation. Most work at the college is undergraduate; one graduate program is currently under way and a second is planned to begin in 1984. Evergreen graduates have been distinctly successful in professional and graduate schools, and in a wide variety of careers.

Candidates for the Presidency should:

- 1. Have distinguished records of academic and/or professional achievement.
2. Have the ability to communicate convincingly with socio-economically and culturally diverse audiences...
3. Be familiar with American higher education...
4. Have excellent records of success at high-level administration.
5. Understand state legislative systems...
6. Have substantial experience with and competence in financial management...
7. Be committed to the spirit and practice of Affirmative Action.
8. Be committed to arts and sciences education.

Candidates who hold an earned doctorate or the equivalent are preferred.

For information call: Betty Beeman, Coordinator Presidential Selection Advisory Committee Phone: (206) 866-6000. Ext. 6100

WSL forced to wait

By Brian Dixon

The Washington Student Lobby (W.S.L.) and the Board of Trustees, are both waiting for a court decision in New Jersey before signing a contract proposed by the W.S.L. The contract pertains to fee collecting procedures that may be adopted by the organization. The court says that these same procedures could be unconstitutional.

On the local level, they "will bring guest speakers to Evergreen, organize campus events, and help provide financial aid. Ultimately the goal of the W.S.L. is to unite all 75,000 students enrolled in state colleges into the largest voting block in the state."
According to Montecucco, in the case at Rutgers State, the courts held that "in the absence of governmental interest justifying the college's assessment of the fee...the fee could not be exacted even temporarily from those students unwilling to pay."

According to Montecucco, in the case at Rutgers State, the courts held that "in the absence of governmental interest justifying the college's assessment of the fee...the fee could not be exacted even temporarily from those students unwilling to pay."

The Organic Farm requests donations of bags of leaves with no brush. Drop them at the Farm anytime between 9 a.m. and 5 p.m. weekdays or call ext. 6361 for details.
The Zonta Club of Olympia has donated a \$500 loan fund for full and part-time re-entry women students.

Junk & Treasure Coalesced into a Plethora of order Chaos at SECOND HAND GIFTS
HOURS Mon-Fri 11am-4pm Sat 11am-3pm
106 1/2 E 4th Ave OLYMPIA 943-5025

The wise eat at The Place others do other wise. Try Our Breakfast Special \$2.49 6:00am-9:30am
Daily Luncheon Special \$2.69 includes soup or salad
Sat. & Sun. Dinner Special \$4.99 soup & full salad bar
THE PLACE RESTAURANT 866-8213

Wine Shop & Deli Cork & Crock
STARBUCK'S COFFEES BEER MAKING SUPPLIES
SNO-LINE Pass Report 464-4600 Seattle

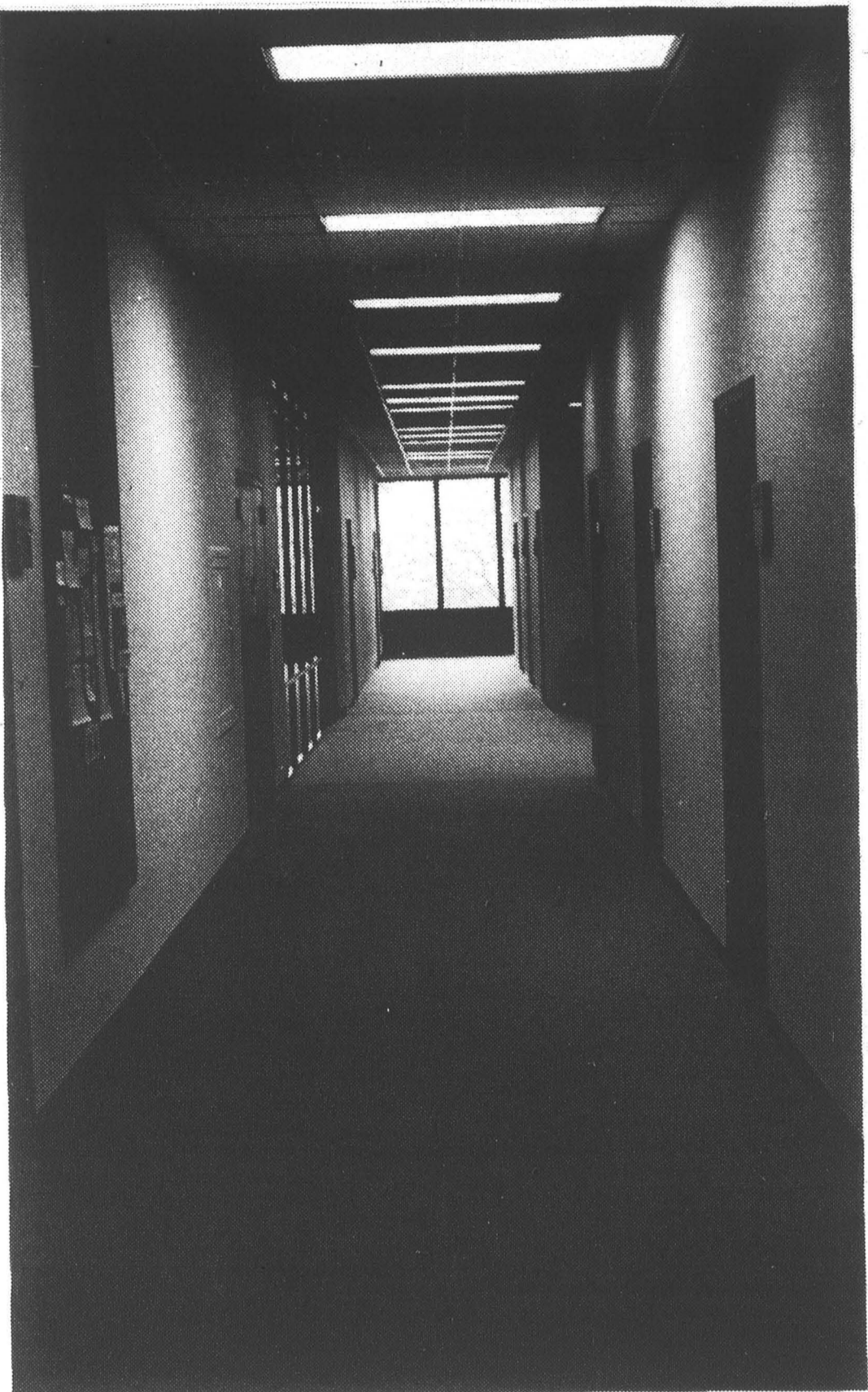


PHOTO BY BRADLEY P. BLUM

CAMPUS NOTES

A juried show of two-dimensional works by 21 Washington state Asian American artists opens Sunday, November 6 with a 3 p.m. reception in Gallery Four of the Evans Library at The Evergreen State College.
Entitled "Traditional and Contemporary Perspectives," the show was organized with the assistance of consulting jurors Margaret Davidson, Joan Hammond, and Cheryl Leo-Gwin, and curated by White and Evergreen student artist Lynne Yamamoto.

Dr. Angelo Pelligrini, University of Washington professor emeritus and former visiting professor at Evergreen, will return to Olympia November 4 for a two-hour autograph signing party for his latest book, 'Lean Years, Happy Years.'
The book, the prolific and highly successful Northwest writer reported, grew out of a course titled "Living the Good Life in Times of Scarcity" he team taught with faculty biologist Larry Eickstaedt in the Spring 1981.

I.T. OKs bike racks

The Thurston County Bicycle Action Committee announced Monday that Inter-city Transit's governing board has agreed to develop an experimental bicycle rack program. Starting April 1984, front mounted racks, each capable of carrying two bicycles, will be installed on buses running the 41, TESC route.
These racks will enable bicyclists to extend their range of travel, avoid hazards and carry broken bicycles.

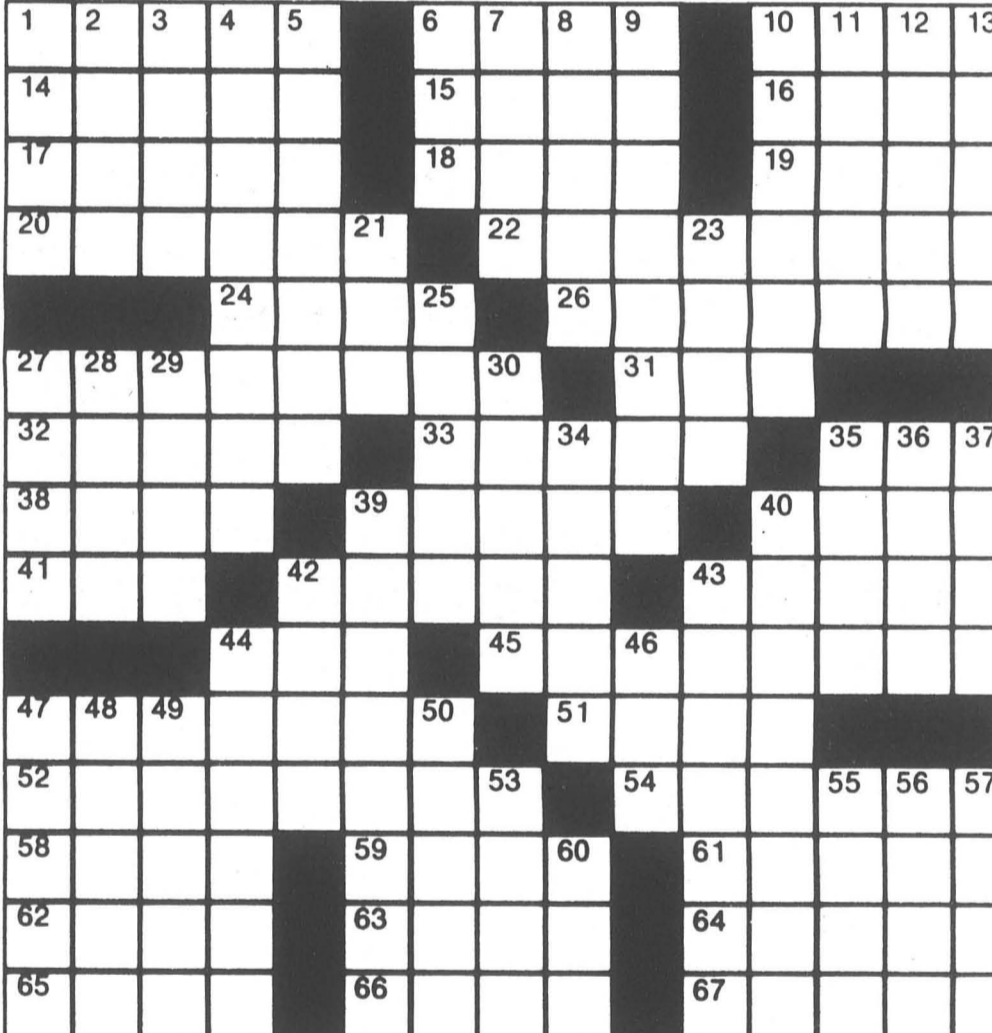
KAOS Highlights

Tonight, Thursday, on the World of Latin America, (sometimes called Thurs. Nite Latin), C.P. will offering an interview with a TESC student from Asturias. His name is Pablo and together they will deal with lots of recent news from Spain, and his impressions of America. C.P. is also excited about the new releases that are finally coming in from Spain - Lole y Manuel; Jua Manuel Serrat; Mondragon y su Orquesta; Cameron de la Isla; and the new release of Gualberto y Ricardo Mino, where Gualberto combines his sitar with Ricardo's guitar in a most unique way.

This week's crossword

ACROSS 1 More practical 6 An Aleutian 10 Knife thrust 14 White poplar 15 Hamlet 16 Impart info 17 Be truthful 18 Scotch uncles 19 A Gardner 20 Barrel parts 22 Smash a door 24 Immediately 26 Reár 27 Coal buckets 31 Female ruff 32 Is beaten 33 Music symbols 35 Study room 38 Singles 39 Interdictions 40 Doll's "word" 41 Married 42 Of cheeks 43 Kind of boat 44 Fish feature 45 Neatness 47 Spas 51 Harbor
PREVIOUS PUZZLE SOLVED
GUSH AWAKE BROW ANTI RECAP LAMA DIAD CENTIMETER STREW DEE ONEND AIDES POD SPAWNED BOSSMAN MORASS RUSE OLA AWAY PLANT PRAM REB FIAT BORATE TRYOUTS MODELED USE TAXES SPITE GET STRAP PERPETUATE IOWA ESAU EASER GLOW WONT EMERY ELLS
DOWN 1 Mineo and Maglie 2 Support 3 USSR river 4 Lifts 5 Slackens 6 George - humorist 7 Final resting place 8 Dutch - 9 Parvenus 10 Addison's partner 11 - Haute 12 Very tired 13 Mixture 21 Peru coin 23 Fastens 25 Alcohol 27 Highway sign 28 Dairy treat 29 Kind of car 30 French upper house 34 Flay 35 Recent 36 Minor prophet 37 Gym gear 39 Hanging down 40 Quebec city 42 Money maker 43 Illusions 44 Was apt 46 G.P. 47 France's neighbor 48 Dried plum 49 Appliance 50 Bird 53 Scotch and - 55 Pool 56 Serf of old 57 In case that 60 Mesh

Happy Halloween SPECIAL
20% off all Electronic Products Calculators Telephones Receivers Oct. 31 ONLY
THE EVERGREEN STATE COLLEGE BOOK STORE
REGULAR HOURS Mon. 8:30am-7:00pm Tues. 8:30am-4:30pm Wed. 8:30am-4:30pm Thurs. 8:30am-7:00pm Fri. 8:30am-3:00pm Sat. 10:00am-2:00pm 866-6000 Ext. 6216



CLASSIFIEDS
JOB READINESS WORKSHOP Nov. 4 Fri. 6-9pm 5&6 Sat&Sun 9-4
BODYMIND INTEGRATION. Individual sessions combining massage, polarity and dreamwork with movement awareness.
EVERGREEN COINS BUYING DOLLARS Silver Coins, Gold, sterling, Diamonds, Goldrings & Jewelry, Dental Gold, Rare Coins, ETC. 1619 Harrison 352-8848
WOMEN'S MISTRESS OF THE FULL MOON A full moon ritual for women, Fri, Nov. 18th, 7pm thru Sun, Nov. 24th, 4pm. Breitenbush Retreat Center, Ore. Facilitators Louise Bode, Junglan Analyst, Seattle, and Wendy Schofield, Laban Movement Analyst, Olympia. See flyers on campus.

K A O S P R O G R A M G U I D E

S U N D A Y

7:00-10:00 CLASSIC HICK SHOW with Bill Wake
Wake up with Bill and hear Romantic, Classical, Baroque. Requests from 9 to 10.

10-11:00 OLD TIME RADIO with Gordon Newby
From the Golden Age of the Clamshell.

11:00-1:00 GOLDEN OLDIES with Gordon Newby
The best from 40's, 50's, 60's...

1:00-3:00 BLUES with Dave Corbett

3:00-5:00 NEW MUSIC Jeffrey Bartone, Marc Barreca

5:00-7:00 VIETNAMESE with Vern Nguyen
Music and cultural information.

7:00-10:00 GAY SPIRIT with Major Tom & friends
Music and information for the Gay Community.

10:00 p.m.-12 midnight THE TWILIGHT ZONE Chris Metz and Phil Jones
The best of rock, reggae, rhythm and blues. The imported, the independent, the obscure and the unknown. You are entering a dimension not only of sight and sound, but of mind...

12:00-on RADIO VERITE with Mr. Space
Safe, clean, potent radio for the eighties.

M O N D A Y

6:00-10:00 BAREFOOT RADIO with Cindy Dollard
The best in music, talk, news.

10:00-12:00 VARIETY with Linda Lammer

12:00-1:00 THE JUNIOR RANGER with Eric Brinker
Music to drink pop by in the early afternoon.

1:00-3:30 LATIN/ETHNIC MUSIC with Doug Denherder

3:30-6:30 MUSIC FOR THE CULTURALLY ANEMIC with Jeff Lane

6:30-7:00 K A O S ALTERNATIVE NEWS

7:00-10:00 JAZZ with J. Morrison/Philip Micheaux

10:00-2:00 THE TWILIGHT ZONE with Phil Jones

Midnight-whenver IT'S STILL EARLY Bret Lunsford
Rock, other stuff.

T U E S D A Y

6:00-10:00 MUSIC FOR BREAKFAST with Joel Davis
Music of all sorts, news, requests, guests.

10:00-12:00 CHARLIE AUSTIN'S RADIO PROGRAM

12 noon-1:00 FOCUS/ASIAN COMMUNIQUE
Two excellent public affairs programs produced by the Longhorn Radio Network at the University of Texas.

1:00-3:30 CELTIC SAMPLER with Anne Broome
Tune in for a bonny wee afternoon.

3:30-6:30 WHAT NOW CLASSICAL with Chris Hubbard

6:30-7:00 K A O S ALTERNATIVE NEWS

7:00-10:00 JAZZ with Bill Martin

10:00-12 midnight BOY MEETS GIRL Calvin Johnson
Two special shows this month: Nov. 8, guests Ginnie and Karen will present lots of loud rock & roll played by women, mostly. Nov. 22 will be dedicated to John F. Kennedy, with excerpts from his speeches, readings from *The Kennedy Wit*, and tributes to the Avengers, Misfits, Destroy all Monsters, Marilyn Monroe, the Hates and more. At 10:30, John Foster's legendary "Kennedy Saga".

alternating on a weekly basis with: **Brad Sweek**

12:00-2:00 FOR MADMEN ONLY with Penny Ray
Magic theatre rock. Tune in, turn in, drop out.

W E D N E S D A Y

6:00-10:00 HALF & HALF with Petrina Walker
Classical, folk, jazz, news, requests & more!

10:00-12:00 REAL AMERICAN FOLK with Anson
Featuring live duets from studio A. Good stuff.

12 noon-1:00 THE J. D. SALINGER HOUR Lisa Goldman
Lisa Goldman reads J.D. Salinger's stories and plays folk music.

 nylon bikini	 canvas sneakers	 vinyl window shades	 mosquito coil	 cellophane grass
 UTILITY SHED	 Bernzomatic cylinder	 vinyl travel garment	 fringed chenille bedspread	 plastic tulips
 onion chopper	 BEEF ROAST	 corn holders	 meat thermometer	
 Hai Karate	 corn broom	 Apple-aire	 bag o' sponges	
 hollow chocolate rabbit	 trouble light	 barbecue mitt	 EXPRESS CRUISER	 decorative porcelain pots
 bag o' peat moss	 decorator throw pillows	 roll o' paper towels	 large plastic plants	 wood-look ceiling beams

1:00-3:30 p.m. THE BULGARIAN YAK SHOW Stephan Dimitroff

3:30-6:30 KAOS CLASSICAL Sharon Berman

6:30-7:00 K A O S ALTERNATIVE NEWS

7:00-9:00 SUBLIMINAL JAZZ with Hal Medrano

9:00-10:30 VOICE AND EXPRESSION OF LATIN AMERICA with Lisa Levy

10:30-12 midnight FILE DRIVING FUNK Vicki Barreca
A powerful new funk show, featuring the best in independent label R&B, much of it never heard on the West Coast. A must for dancers.

12:00-2:00 ROCK, ETC. with John Mosher

T H U R S D A Y

6:00-10:00 THE SPICE OF LIFE VARIETY SHOW Guy Nelson
American music, news, guests and the button-down humor of Guy Nelson.

10:00-12:00 AM BLUES with Linda Borgaess
Excited new programmer makes big start in radio.

12 noon-1:00 THE DANGER HOUR Robin James
An hour of fun and adventure. This is not experimental--this is real.

1:00-3:30 HAWAIIAN PARADISE with Toni Collie
Music, poetry, and the language of the islands.

3:30-6:30 CLASSICAL, ETC. Nancy Curtis
Chamber music and shorter works of all periods, and a feature piece from 4 to 5 each show. Upcoming features:
Nov. 3 - Messiaen: *Turangalila Symphony*
Nov. 10 - Verdi: *Requiem*
Nov. 17 - Tchaikovsky: *Symphony 6, "Pathétique"*
Nov. 24 - Thompson: *The Mother of Us All*; libretto by Gertrude Stein.

6:30-7:00 K A O S ALTERNATIVE NEWS

7:00-9:00 p.m. AMERICAN ANECDOTES Tom Foote
Hey, wait a minute, this is a jazz slot! NEW NEW NEW by popular demand, KAOS brings you an evening of American Traditional music every Thursday. Many rare, one-of-a-kind records, and a complete history of our music in America.

9:00-10:30 THE WORLD OF LATIN MUSIC C.P.
A program which hopes to bring the music of Spain and Latin America to our community. Flamenco, Salsa, Latin Jazz, and occasional live pieces with local groups and people. In the enjoyment of music, we hope to share a cross-cultural experience, getting to know the world around us all. Join in with requests, comments, or get in touch with C.P. for an interview at 866-6822.

10:00-12:00 ADVANCED ROCK & ROLL with Tucker, Bryan or Patric

12 midnight-2:00 THE BLUELIGHT ZONE Chris and Phil
You've listened to the Twilight Zone... Join us for the real blues. Requests are encouraged.

F R I D A Y

6:00-10:00 a.m. BREAKFAST SPECIAL Bill Eiseman
A special way to start your day. Variety music, spiced with news, weather and interviews. Not to mention a ham of a host, so we won't...

10:00-12:00 FOLK with :Pete Hayes

12 noon-1:00 TOWN TALK Bill Eiseman
A bi-weekly call-in talk show concentrating on local issues. This month's features: **Nov. 4: Development in Olympia.** The East Bay Harbor, Washington Center, and the new Community Center-- what changes will be made, who's making those decisions, and how you can have a hand in the process. **Nov. 18: Food in the Puget Sound.** Where do we buy our food and why? How is it distributed? Why are people going hungry?

1:00-3:30 EARLY MUSIC with Norm Sohl

3:30-6:30 BULGARIAN YAK SHOW with Stephen Dimitroff

6:30-7:00 K A O S ALTERNATIVE NEWS

7:00-10:00 MYSTERY JAZZ with Paul Harding

10:00-12:00 THE VINYL FRONTIER with Suzanne, Kate and Amber
80's rock--hardcore after 11 PM.

12:00-2:00 GO! with Geoff Lane

FRIDAY MONTHLY SPECIAL OCTOBER 7 8:00-10:00 p.m.
TRIVIA CONTEST The number to call is 866-6822.

S A T U R D A Y

6:00-8:30 a.m. SATURDAY MORNING JAZZ Jim Patrick
A spectrum of jazz, from Dave Amram to Danny Zeitlin. Computerized weather forecasts supplemented by empirical forecasts supplemented by empirical forecasts (we actually stick our heads out of the window to see if it's raining), and we'll keep you informed as well. A minimum of talk and lots of great jazz for you!

6:00-8:30 SATURDAY MORNING JAZZ with Jim Patrick

8:30-9:30 KIDSHOW with Troy Montoya

9:30-12:00 ALTERNATE ROUTE Janet B.
Where herstory lane meets Amazon Rd. Special on November 19th: Barbara Wilson, author and co-founder of Seal Press, publisher of feminist/lesbian stories and novels.

12:00-2:00 CINEMA THEATRE with Ford A. Thaxton

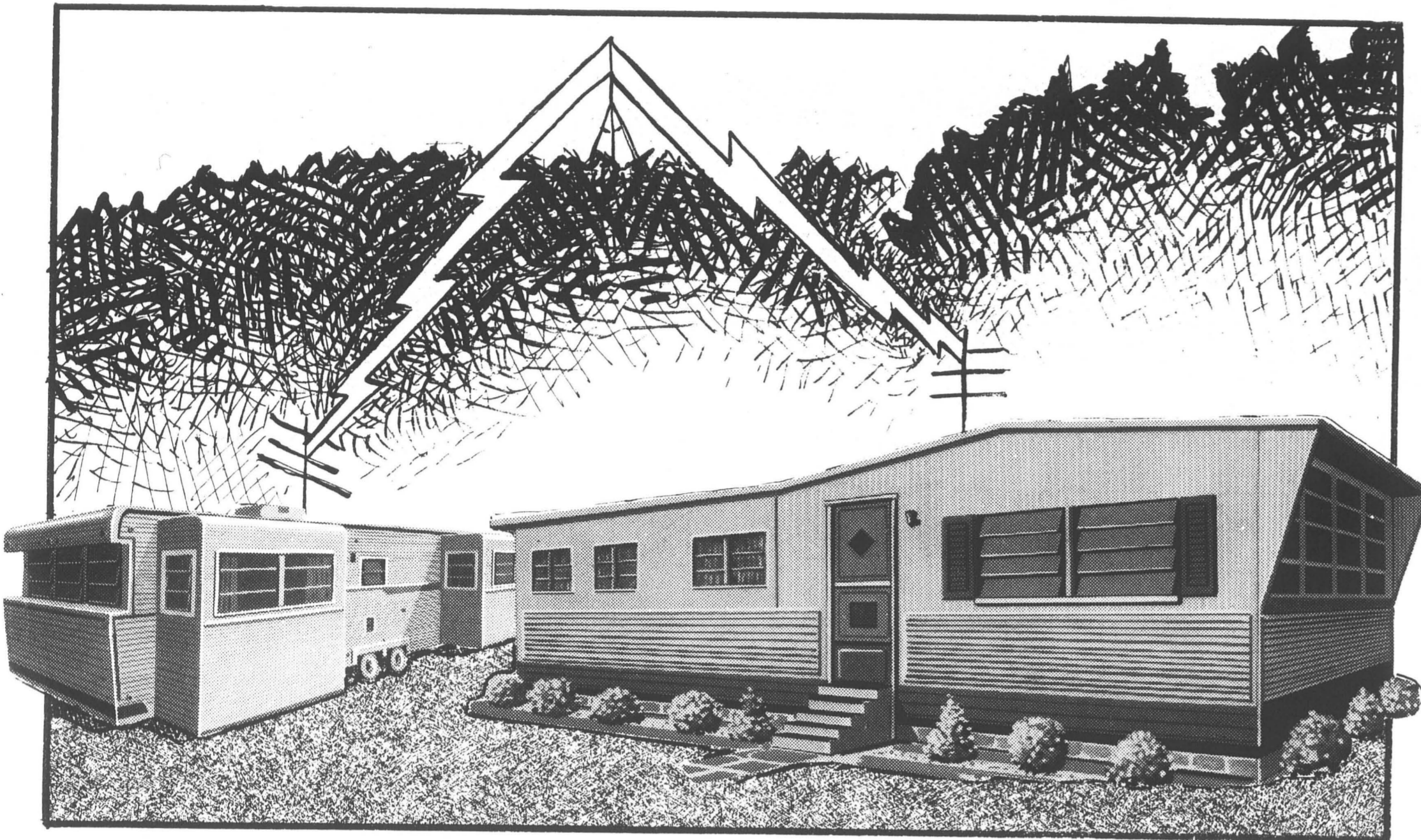
2:00-5:00 p.m. EL MENSAJE DEL AIRE Jose y Jose

5:00-7:30 DEBBIE KREMMINS' LOCAL ALTERNATIVE POLITICS

7:30-10:00 CARIBBEAN CONNECTION Mikkel
Reggae and other goodies from *El Caribe*.

10:00-12 midnight DOCTOR LA-BEAT-O GEOFF
alternating weekly with **SHOCKING TRUTH ROCK** Geoff Kirk

12:00-4:00 OLDIES REVIVAL with the Dr.



LETTERS

To the Editor:

I would like to echo the comments of Marc Avery [CPJ letter to the editor Oct. 20] in that I would also like to see the members of the Evergreen State College community join in support of Senator Dan Evans in the upcoming Senatorial election. Over the past two years I have had the opportunity to work with Dan Evans and I have seen his commitment to quality education, that "Every citizen should have the opportunity to use his or her...abilities to the fullest pursuit of individual dreams." I know Senator Evans will work for more and better jobs and that he believes in equal rights for all. We are all in the unique position of having seen the commitment level of Senator Dan Evans. For the past 7 years Dan Evans has put his support behind us and now we have the unique opportunity to put our support behind Senator Evans in saying that we believe in him and we feel he is the most qualified for the job. Dan Evans was a great Governor. He'll be a great Senator.

Connie Gray
Committee — Greeners for Senator Dan Evans

To the Editor:

By now you have heard that the Lowry for Senate campaign is off and running on the Evergreen State College campus. The Lowry campaign needs help with the distributing of pamphlets, making posters, and getting the word out that Mike Lowry is the U.S. Senator for today's world.

Clear on the issues, Mike's steady leadership is needed in Washington State and Washington D.C. If you would like more information about Mike Lowry and/or would like to volunteer, contact Diana King or Keith Clay in D304, or Janine Thome, A911.

Janine Thome
Greeners for Lowry Campaign

To the Editor:

I have been quite surprised by the political naive and blind support of Greeners for Evans. They seem to base their judgement on Dan Evans' tenure as president and fail to look beyond the educational arena in order to fully understand his political perspective. The prevailing perception that Dan Evans is a progressive needs to be shattered.

As governor, Evans was involved in the creation of WPPSS and his culpability in this nuclear fiasco must be acknowledged. Since being appointed to the Senate less than three months ago, he has established a voting record which clearly aligns himself with the policies and principles of the Reagan administration. He voted in favor of the \$263 billion dollar defense budget and also the lifting of the moratorium on nerve-gas production. His vote against the Bradley amendment (for increased money for vocational education) and against a \$50 million authorization to remove asbestos from schools is rather paradoxical given his espoused commitment to education. His support for continued U.S. troops in Lebanon and undecidedness on U.S. military involvement in Central America and The Caribbean is tragic and shows a lack of regard for college-age people who would be directly affected by the revival of the draft.

In contrast, Mike Lowry has opposed large defense outlays, supports a mutually verifiable Nuclear Freeze and an end to U.S. military involvement in Central America, The Caribbean and the Middle East. He sponsored legislation that helped save wilderness area (for example, Alpine Lake) and strongly supports the rights of working people and oppressed groups. His record reflects a primary concern for human and ecological needs, not profits.

The image of an independent Evans is an illusion. While his support for Evergreen is commendable, his allegiance to the military-industrial complex is intolerable and we cannot afford it! We have a clear choice. I encourage Greeners to shake off their indifference to electoral politics and vote for Mike Lowry on November 8.

Sean Sinclair

Student groups back candidates

By Allison C. Green



Greeners for Lowry meeting draws interested students.

Lowry makes himself comfortable at Dan's

By Allison C. Green

Joking about his image in the Senate race debate, Mike Lowry addressed a rally Monday at Evergreen on the fourth floor of the library. He discussed the nuclear arms race foreign policy, Marines in Lebanon and Dan Evans' record as Senator.

Lowry read from his September 28 statement against the 18 month Marine commitment. "To think that 1600 Marines are to serve as anything but targets is a tragic mistake. They should be removed immediately."

Lowry wound up his talk with a discussion of Evans' voting record since he was "annointed" Senator, as Lowry phrased the appointment. He specifically criticized Evans' vote against the Bradley Amendment "for \$559 million for student loans, for vocational education and for compensatory education which is math and reading help for children in the first through fifth grades." He called Evans to task for voting against appropriating \$50 million to remove asbestos from schools.



PHOTO BY BRADLEY R. BULIN

Lowry seems to enjoy his image as an unabashed Democrat's Democrat opposing "Honest Dan." He said, "Of course he's honest. I'm honest. I work hard. Since when are the qualifications for being a United States Senator being honest? Isn't the question, 'Where do you stand on the issues?'" In an informal poll by the CPJ following the rally, most people in attendance appeared to have come already disposed toward Lowry but wanting more information.

Evoone McMillan, Evergreen staff member, said that though she has respect for Evans, she changed her mind after the debates. "Two weeks ago I was pretty strongly supporting Dan Evans. In fact I even went to one of his campaign activities and spoke in favor of him, and now that I've heard the issues...I think the vote of conscience is with Mike Lowry."

Student Scott Schug commented, "I've always had an image of Evergreen as being liberal like Mike Lowry. Evans is popular here but I would say people at Evergreen are more in tune with the issues Mike Lowry's for."

No one missed the irony of Lowry speaking in the Daniel J. Evans Library. And no one approached in the poll was surprised at the turnout and support of the audience. The Evergreen community will play a tremendous role in the outcome of the election either way. We'll know November 8.

"If this is a beauty contest I wouldn't have entered it," Lowry prefaced his remarks.

The rally, sponsored by the Evergreen Wilderness Center, brought the Senate hopeful to his opponent's territory. The audience responded enthusiastically to Lowry's support of the mutual verifiable nuclear weapons freeze and the Nicaraguan government and his stand against Marines in Lebanon. Four times the audience erupted in applause before Lowry ended his speech.

Of the Nicaraguan people, Lowry stated, "They do not want [Nicaragua] to be a puppet of the United States. They know what it's like to be a puppet of the United States. They had Somoza there for 43 years."

Lowry claimed he wants to formulate a foreign policy "good for the United States, not...good for the United Fruit Company."

In response to a question about the effectiveness of the armed forces in Lebanon,

People on this campus have no excuse for apathy this election. Our former president is fighting for a Senate seat with an outspoken liberal Democrat.

"This is the top priority in the state, as far as I'm concerned: to really have a feeling and a presence for Mike on this [the Evergreen State College] campus that there are students, faculty, staff [and] alumni in this area who are supporting Mike, because this is so called Dan Evans' stronghold," said Marianne Bichsel, state campus coordinator for the Mike Lowry campaign, last Friday at an organizational meeting.

Connie Gray, student organizer for Greeners for Senator Evans, says, "We realize that this is an alternative education campus...and that students are looking for an alternative. That's why we're putting a lot of time into this campus. If we can get the information out, the Evans record will speak for itself."

Dan Evans, a Republican, served as governor of Washington for twelve years and as the Evergreen president for six. His political savvy is attributed with helping keep the college on the map.

Running on his experience and his image as the golden boy of Washington State, Evans emphasizes his concern for education, energy issues and a strong defense.

Two students head the Greeners for Senator Evans campaign on campus. Marc Avery and Gray call themselves a moderate Republican and a liberal Republican, respectively. They say they've received a lot of enthusiastic response from students who want to support Evans. They don't feel they need to target any specific group on campus — faculty, staff or students — but recognize that the school is known for its liberal-minded students. Says Avery, "There are less students today who are radical. As usual, the radicals are the ones who make the most noise. [It is] evident from the involvement in the campaign of students like Connie and I that the number of students at Evergreen with those ideas is lessening."

Friday at an organizational meeting they plan to discuss campaign strategy. Evans will not be speaking at Evergreen but Dan Evans, Jr. is scheduled to speak at a rally on November 3. The Olympia Evans campaign headquarters will work closely with them. Last Friday about 25 students attended a meeting to discuss the Mike Lowry campaign. Lowry, congressman from a Seattle district, emphasizes his support for a nuclear weapons freeze, for the government in Nicaragua and for more money in education. Bichsel came to offer support from the state Lowry campaign. She is coordinating Lowry rallies on all the campuses in the state the day before the election.

"What we did at the University of Washington...is we had a huge rally for Mike the day before the primary...Mike showed up to speak and then the next day in the paper, on election day, was this huge article about all these students supporting Mike."

Stephen Stills has offered his services for four college benefit concerts, tentatively set for Washington State University, Gonzaga, the University of Washington and November 3 at The Evergreen State College. "Stephen Stills is supporting Mike because of Mike's stand on the freeze," according to Bichsel.

Krag Unsoeld, a volunteer from the county campaign at the meeting, suggested targeting staff, whose efforts to unionize were not supported by Evans.

A few students, including Janine Thome, have organized a steering committee to organize these events. Their first effort was a rally Monday in the library building. [See related story.]

Living at the center stage of this race, Evergreen students, staff and faculty can make a difference in the election. For information contact:

Marc Avery, Greeners for Senator Evans 943-1303
Janine Thome, Greeners for Lowry Dorm A911

PUBLIC AFFAIRS

If you look through the program description pages for this month, you may notice that KAOS has added several new public affairs programs to the schedule. If you're interested in the world around you, you should check out these offerings on 89.3FM coming up this month:

Tuesday, noon—12:30 — FOCUS; a broad series covering many issues of the day. Followed by:

Tuesday, 12:30—1 PM—ASIAN COMMUNIQUE; a series of programs on issues current in Asian nations, and their relationship to the U.S.

Both programs are produced by the Longhorn Radio Network, Austin, TX. Friday, noon—1 PM—TOWN TALK; our call-in program discussing current issues in the local community. Informative program of women's music,

women's news, and women's views.

KAOS is also proud to present programs which offer insights into other cultures, including:

Wednesday, noon—1 PM—THE YIDDISH HOUR.

Wednesday, 9—10:30 PM—VOICES AND EXPRESSIONS OF LATIN AMERICA.

Thursday, 9—10:30 PM—THE WORLD OF LATIN MUSIC.

Saturday, 2—5 PM—EL MENSAJE DEL AIRE.

Sunday, 5—7 PM—THE VIETNAMESE PROGRAM.

This kind of programming comes to you only on community radio KAOS. Enjoy your world a little more—stay tuned to KAOS.

KAOS STAFF

Operations Manager/Volunteer Coordinator : *Rich Jensen*
Production Manager : *Bill Eiseman*
Technical Director : *Norm Sohl*
News Director : *John Kersting*
Music Director : *Chris Metz*
Production Staff : *Tom Hill, Corliss Prong, Louis Herron, Laurien Weisser, Charlie Austin, Luke Goodwin*
News Staff : *John Mosher, Corliss Prong, Amber Shinn, Charlie Austin, Lucille Rhoades, Lisa Goldman*
Station Manager : *Carol Harding*
General Manager/Advisor : *Michael Huntsberger*
Typesetting : *Vicki Barreca*
Program Guide : *Kevin Olson*

Remember the "Alive In Olympia" series? Well, even though the series is over, it still lives with the "Alive In Olympia" record. This is a limited edition release so order today!

Send \$6.50 plus \$1.50 p&h to:
KAOS Album
TESC CAB 305
Olympia WA 98505

Name _____
Address _____
Allow 6-8 weeks for delivery

The businesses listed here offer a limited 10 percent discount on products and services at their locations. We urge you to shop at the outlets of KAOS Patrons, and remind you to carry your subscriber card with you when you shop. KAOS also wishes to express our heartfelt appreciation to our patrons—your support is vital to the continued growth of community in the south Puget Sound region.

The Asterisk & Cheese Library
Westside Center
Olympia 357-7573

Lady Lynn's Natural Fiber Fabrics
335 Division Street N.W.
Olympia 943-3074

At Home With Books
1827 East 4th
Olympia 352-0720

Pizza Haven
270 Capital Mall
Olympia 754-3711

The Bookstore
108 East 4th
Olympia 357-7470

Radiance Herbs and Massage
202 West 4th
Olympia 357-9470

Columbia Bakery
111 North Columbia
Olympia 352-2274

Rainy Day Records
Westside Center
Olympia 357-4755

The Grainery
3644 Mud Bay Road
Olympia 866-7048

Smithfield Cafe
212 West 4th
Olympia 786-1725

Mansion Glass
221 1/2 West 4th
Olympia 352-2274

T-Shirts +
217 Capital Mall
Olympia 754-9525

Alta Artworks
8430 Mason Rd. Northwest
Olympia, WA. 98502

Cashing In Our Coupons Makes Good Cents!

KAOS T-SHIRTS AVAILABLE AGAIN

ORDER FORM

Please send me Enclosed is a check for _____
1983 KAOS T-Shirts (Sales tax included in price—please include)
 \$6.50 regular rate \$1.00 for postage and handling on mail-orders
 \$6.00 subscribers
Please indicate size(s) _____

SEND MY T-SHIRTS TO:

Name: _____
Address _____
street city state ZIP

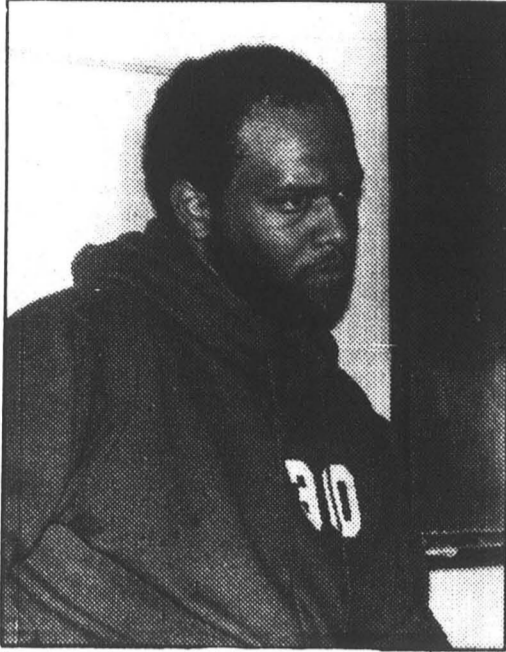
Please allow 6-8 weeks for delivery.



Greeners for Evans organizers Marc Avery and Connie Gray feel confident their candidate will win.

"Deposit \$.50 for the next three laps"

PHOTO BY DON BATES



TESC swim coach, Robbie Johnson

Frisbee flingers fly

by Corliss Prong

Evergreen was well represented at the Ultimate Frisbee Playoffs that took place in Seattle this past weekend. With the weather a little windy on Saturday, the team did well in defense of TESC spirit, scoring a win in their first game against the Tech Tronics from Portland, 15-0. Their second and third games were tight, although, not so triumphant. Holding the WAVES, (Western Washington University), 13-9 for a major part of the game, the Greeners lost their lead in the last portion, giving the opponents the victory, 15-13; and after holding the Crazy Bees of Boeing, 13-9, 13 all, and fighting all the way, The Ducks eventually lost to the Bees, 16-14.

Sunday, TESC played two final games with Walla Walla and the Rising Sun AKA from Salem. They lost to Walla Walla 15-10 although they played a good defensive game, and also lost to Salem 15-9.

All in all, the TESC was well represented with a team of 15, and played considerably tight games. It was a first for the team to play in a tournament, and a first for many of the members to play Ultimate Frisbee. They only had two casualties; Randy Silvey, who left the field with a twisted knee, and Andy McMillan, who injured his ankle. Now back in Olympia, they say they saw some great frisbee; learned a lot, and are all pretty darn sore.



Evergreen's Ultimate Frisbee team in action up in Seattle.

PHOTO BY C. P.

By Don Bates

Robbie Johnson, Evergreen's swimming coach, has come up with a truly innovative approach to better competition for his swim team. He has arranged a swim meet between TESC and the University of Connecticut on November 15th — by phone!

Johnson, who is in his third year as Evergreen's swimming coach, thought of the idea upon his return from a recent coach's conference. In conversation with the U. of Conn. coach, he discovered that they not only have the same timing system as ours, but they also have a non-scholarship, all volunteer swim team as we do.

"I wanted a more competitive team to swim against than those made up of scholarship athletes that are in our region," stated Johnson.

When asked if scholarships made a big difference in the quality of the team, Johnson replied emphatically, "It would make a phenomenal difference if we had scholarships here." He went on to explain that he had met a number of swimmers and their parents who loved our facilities and coaching staff, but went to other schools because they were given swimming scholarships.

"Hopefully, this electronic swim competition will bring more recognition," he said. Johnson reported that both schools use the Colorado timing system which is the same as that used in the Olympics and the World Games. He stated that Evergreen's is much



newer, but that the two colleges' systems are quite compatible.

Johnson said that his team is strong and very competitive and shouldn't be taken lightly as competitors. Although volunteers, he said they are very hard working and some members of the team such as Austin St. John can easily compete on a national level.

"In my first year, people laughed at our team. Last year they laughed a little less, and this year they are taking us much more seriously. Next year they're going to be scared," Johnson stated as he put five members of his team through their paces.

Robbie also reported that he is working on the possibility of televising the Nov. 15th meet via a teleconference type network between the two schools. This is the first time this type of competition has been attempted, and the sports department is excited about the possibilities for future events.

Evergreen's innovative staff may have done it again. In addition to making a more competitive sports department, they may have come up with a cure for jet lag. Pack only the necessities, troops. Report to the transporter room for the ride to Connecticut on the Ma Bell Express!

Women sacked, Sailors swamped and men magnificent in weird weekend

By Karen Denman

The Evergreen women's soccer team returned home from Oregon with two more losses tacked to their win/loss record, dropping to 2-6-1. The team couldn't seem to pick up the pace of their play enough to be a consistent threat. Nagging injuries continued to take their toll as the women could only muster one goal in their 4-1 loss to an improved side from Oregon State University. Coach Tamar Chotzen was visibly displeased with her team's performance and requested they take a two lap cool-down jog after the game.

The second half of the road trip appeared a carbon copy of Saturday's game. Although the Geoducks had the lead for a short time, the Oregon Ducks rallied to score two goals, which proved to be enough for a 2-1 victory over Evergreen's 'Ducks.

The women will be playing at Fort Steilacoom on Saturday. Central Washington University will be traveling to Geoduck country for a Sunday game that is

the finale to the women's regular season. The weekend of November 3, 4 and 5 is the regional tournament to be held at Evergreen. It should prove to be a fine weekend for watching high caliber soccer.

The men's soccer team is coming together as a total team. Their performance according to Coach Arno Zoske was praised as "the highest level of physical and emotional intensity we have played with this season."

The performance Zoske is referring to is last Sunday's game against Seattle University, which ended in a 1-1 draw. Several players had exceptional games. Jim Richie had his best game of the season as he moved to his new position of playmaker in the midfield, and Ron Caviier provided the spark as he scored the tying goal for the Geoducks. Darrel Saxton, Ed Randall and Stan Jones were also singled out for fine games.

The men will next see action this Saturday as they travel to Linfield to take on the Wildcats.

The windy conditions on Lake Washington left the Geoduck sailors in somewhat of a pickle. They had gone up to Seattle on Saturday, October 22nd, for the Kick-Off Regatta hosted by the University of Washington. Due to the heavy winds, the race was moved from the middle of the lake to a more protected area. Many crews capsized, including the Evergreen 'B' fleet boat. The capsizing wouldn't have been so devastating if the mast had not gotten tangled with the grass that grows just under the surface of the water. The mast was finally freed after a 90 minute struggle.

"That cost us a lot of points," said Sailing Coach Lou Powers. "We might have finished in the top five places if it hadn't been for the tangled mast."

An overall finish of eighth place for the Greeners was not all that disappointing for the team. The top schools, U of W and Western Washington, red-shirted people last year and as a result have very strong teams this season.

BOATS FOR SALE

CLASSIC 28ft CUSTOM Cedar on Oak Frames Make offer

30ft MINI-TUG H.M.S. Be in Next Years Races \$8000.00

26ft FAIRLINER EXPRESS Possible Live-A-Board \$7500.00 or Offer

Arjac Yacht Brokers 611 N. Columbia 352-2517

"Authentic Cheese Nachos"

Made With Sharp Wisconsin Cheddar Melted Over Crisp Tortilla Chips. Topped With Tuscan Peppers, Fresh Sourcream, And Green Chili Salsa. \$2.50

THE BEST IN TOWN MADE AT



VILLAGE MART

3210 Cooper Point Road NW

866-3999

Chotzen returns as Coach and Friend

By Janet O'Leary

It's more than the thrill of victory and the agony of defeat for Tamar Chotzen, Evergreen's women's soccer coach. She has a great rapport and respect for her members: "I love them all...[and] feel real good about them." Right now, these players are very important in Chotzen's life and she would like to stay with them at least two years to build team spirit.

Chotzen came to Evergreen from Stanford, via Hawaii, where she received her Master's Degree in Education from there she became a high school teacher.

Prior to receiving her Masters, Chotzen was a student here at Evergreen from 1978 through 1981. At that time, she was involved in both men's and women's soccer and played on their teams, practicing with the men. Therefore, with a good six years avidly participating in soccer, she was obviously a natural choice for coaching the women's squad after Jacques Zimicki stepped down.

Even though Chotzen has a full-time job with the CETA Program, there is always time allotted for the eighteen to twenty

games, including tournaments, played in soccer's short season, the last week of September through the first week of November. This schedule becomes even longer and time consuming, since half of the games are played on the road taking the players to Canada and Oregon.

Of course, time must also be available for practice games, which are usually on Tuesdays, Thursdays and Fridays, depending on their out of town schedules; and warm-up exercises which normally average forty-five minutes before each game.

Although, Evergreen's women's soccer team — 'The Geoducks' — belong to the National soccer league, NAIA, Chotzen finds time to coach an additional eight to ten women "who have really never played [soccer] before;" and belong to the local Washington league, SWASA. These women are coached right along with the team which gives them the extra advantage of playing with a more experienced group.

It is easy to see that sports are an important and beneficial aspect of Chotzen's life. Being able to compete, coach and teach provides for a full day and at the same time a sense of fulfillment.



Coach Chotzen grimaces as her team struggles through another tough match. Numerous injuries and bad breaks have contributed to a disappointing 2-6-1 season.

By Karen Denman

One of the more discouraging aspects of coaching or participating in athletics here at Evergreen is the apparent apathy of both students and staff to the team's efforts. Chotzen reports that there are an average of fifteen fans for each home game; and most of these are from the men's soccer team. If soccer has made Chotzen and her team members live a happier life, we should all do ourselves a favor and participate by giving the 'Geoducks' the raves and recognition they deserve.

Therefore, for the novice soccer player and/or fan here are a few brief rules we should be aware of:

1. A team consists of eleven players and their object is to advance the ball down a field 100 yards long and 60 yards wide. A goal is scored by kicking or heading the ball (that is, using your head) into a net area protected by a goalie.
2. A game is made up of two 45-minute quarters with no time outs.
3. The winner of a coin toss has the choice of either taking the kick-off or selecting the goal their team defends.
4. Play is started with a 'place kick' by the

center forward. Thereafter, the team scored against kicks off, except at the beginning of each quarter, when teams alternate kick-offs. Goals are changed at half time.

5. The ball may be volleyed, blocked, kicked, etc. and passed with the feet, body and head.

6. A player is 'off-side' when she is ahead of the ball in her opponent's half of the field and nearer to the goal than three opponents.

7. A 'corner kick' is awarded an attacking player when the ball is sent out of bounds over the endline outside the goal posts.

8. A 'free kick' is given to the opponents for a foul.

9. A 'foul' is called when a player trips, kicks, strikes, holds, or pushes an opponent or for unnecessary roughness, or handles the ball.

10. A goal is scored when the ball passes between the goal posts and under the cross bar. A goal counts as a single point. Of course, there are many more rules; but with these in hand, you too can accomplish a more animated outlook on life by enjoying the active running, kicking, and passing that is soccer.



Chotzen discusses strategy with her players.

Photo by Karen Denman

FREE Mylar Balloon

With every regular Balloon Bouquet on Halloween. Costume Delivery Included

GREETING'S OLYMPIA!

459-SONG

SNO-LINE Pass Report

464-4600 Seattle

Washington State Department of Transportation

Rainy Day RECORD 66

Great selection of new records and tapes at low prices. We buy and sell used albums. Most complete ticket service in town.

Westside Center Division & Harrison

357-4755

AIM HIGH

Want more than a desk job?

Looking for an exciting and challenging career? Where each day is different? Many Air Force people have such a career as pilots and navigators. Maybe you can join them. Find out if you qualify. See an Air Force recruiter today.

APPLICATION PERIOD NOW OPEN

MSgt RICK CAREY at (206) 442-1307 CALL COLLECT

AIR FORCE

A great way of life.

Joanna's "Hip-Gourmet" Pizza

Modern Music

Relaxing Atmosphere & Interesting Conversation

Open Til 11:00pm Sun Thru Thurs. 12:30pm Fri. & Sat.

Delivery to Evergreen Campus Fri.-Mon. 4pm-Closing

120 N PEAR 943-9849

GMAT

LSAT • MCAT • GRE

GRE PSYCH • GRE BIO

GMAT • DAT • OCAT • PCAT

VAT • MAT • SAT

NAT'L MED BDS

ECFMC • FLEX • VQE

NDB • NPB I • NLE

Stanley H. KAPLAN

EDUCATIONAL CENTER

Test Preparation Specialists Since 1938

For information, Please Call: (206)632-0634

