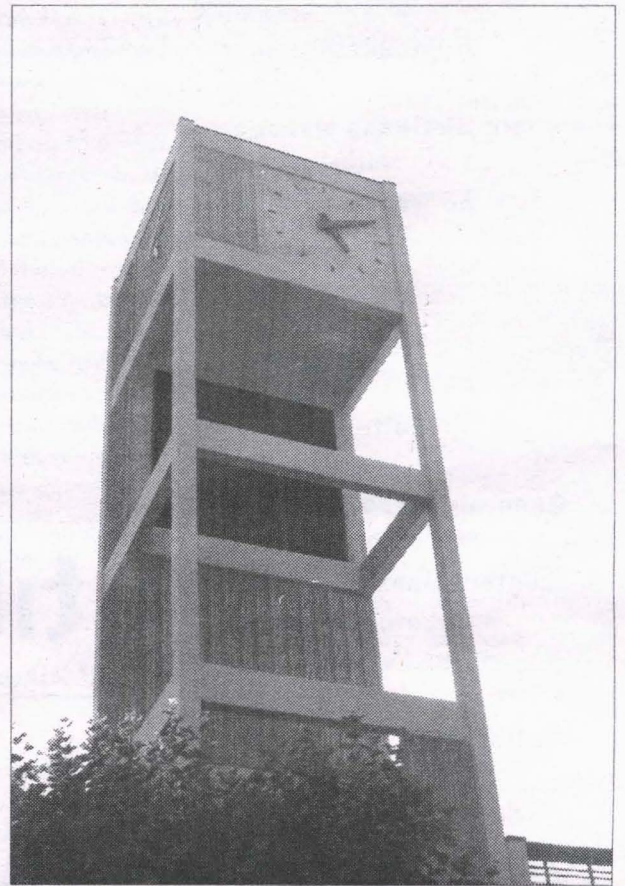
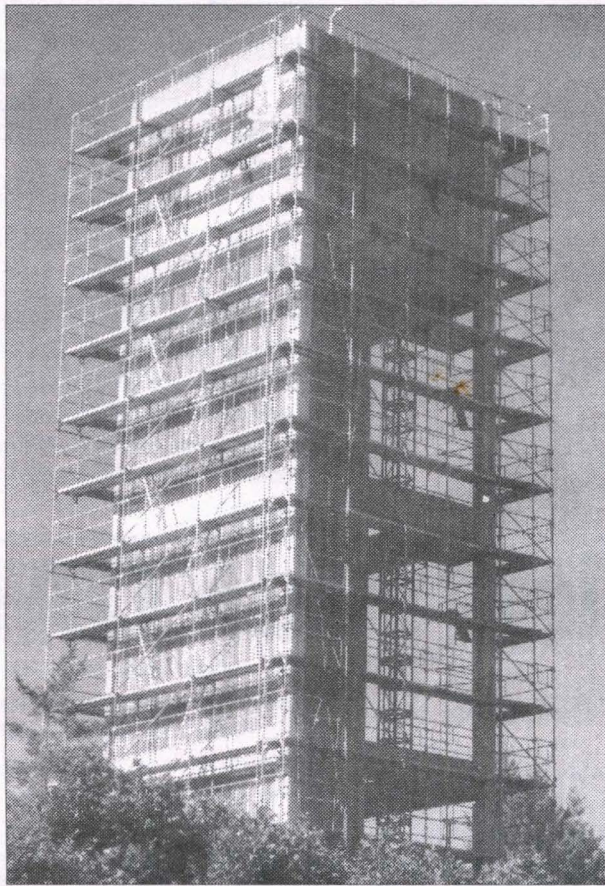


FALL 2011 ORIENTATION EDITION:

Getting on 'green time



This summer the clock tower, a beloved campus landmark, underwent seismic retrofitting. The retrofit strengthened the beams and pillars with fiber-reinforced polymer. This made it more able to withstand an earthquake, if such a catastrophic event should occur. The construction cost the college \$1 million, paid for by state and federal Emergency Management agencies.

Policeman's new steed, the Segway

Melkorka Licea

CPJ Staff

After much deliberation, Police Services decided this summer to take on two new additions to its fleet: patroller model Segways. Police Services had been weighing the possibility of purchasing Segways since last summer, when they rented testing models. In July they bought two Segways for \$16,000 total. The funding for the new transportation came from government reserves put aside strictly for the replacement of equipment for Police Services. They decided that

the best way to utilize the funding would be to purchase tools that would help maximize their response time, improve environmental emissions, while also allowing them to carry pre-positioned equipment.

Sergeant Tim Marron strongly advocated for the Segways, leading the efforts towards adopting the convenient, eco-friendly machines. Marron explained that they are much more fuel efficient than driving their Ford Crown Victoria patrol cars - one of which is now put on reserve - since the Segways are battery powered. They are also much more efficient in getting officers



Photo: Nick Strite

Sergeant Tim Marron demonstrates one of Police Services' two newly acquired Segways



Photo: Nick Strite

Sgt. Marron explains various features of the Segway to Galen Radtke on September 8. Marron says the Segways will significantly improve police response time.

quickly to a scene of an emergency - traveling about 12.5mph - rather than having to waste time returning back to the police department to collect vital equipment. The Segways can carry all of the equipment necessary for an emergency, including advanced trauma kits and ballistic shields. Since the Segways are ADA approved, they may enter buildings, unlike mountain bikes.

Marron says they are also easy to maneuver into spaces where patrol cars can't easily access, such as the Sem II buildings. "Police Services can get into any room on campus in under three minutes on a Segway," Sergeant Marron explained, "and you

have all the equipment you could possibly need." Patrol cars and mountain bikes will still be used for patrolling and security, but the Segways will be used more frequently in situations that demand quick response.

"You can't put a price on safety," Marron said. "It is our job to be ready whether its thirty seconds from now, next week, or six years from now." If an emergency were to occur, the lag time for paramedics to arrive is often fatal. Therefore the police department has placed a special importance on ensuring that they take every precaution and preparation necessary for such an event.

cooper point journal

Business

Business Manager

Galen Radtke

Associate Business Manager

Eric Spahr

Ad Representative

Available

Ad Designer

Available

News

Editor-in-Chief

Jo Sahlin

General Managing Editor

Melkorka Licea

Content Managing Editor

Lewis Mikkelson

Print Layout Editor

Available

Audio/Video Coordinator

Available

Calendar Coordinator

Available

Letters & Opinion Coordinator

Available

Campus Life Coordinator

Available

Sports & Rec Coordinator

Available

Comics Coordinator

Available

Photo Coordinator

Available

Copy Editors (2)

Available

Print Page Proofer

Available

Web Proofer

Available

Photographer

Available

Multimedia Reporters (3)

Available

Advisor

Seth Vincent

Contact

Office

CAB 332

News

(360) 867-6213

cpj@evergreen.edu

Business

(360) 867-6054

cpjbiz@evergreen.edu

Free distribution is limited to one copy per edition per person. Persons in need of more than one copy should contact the Cooper Point Journal business manager; when appropriate, the business manager may charge \$.75 for additional copies.

The Cooper Point Journal is printed on recycled newsprint using soy ink.

© 2011 Cooper Point Journal

Dormitory survival guide

Catherine Nolan

Contributor

Living in the dorms is a great way to get to know fellow freshmen and it's nice to only need to wake up ten minutes before class. However, for those not familiar with dorm living it may require some lifestyle adjustments. Here are some tips for surviving in close quarters:

Establish ground rules with your roommates and suitemates as soon as possible. The Living Learning Agreement made with your RA covers a good amount, but not everything. For instance: your roommate may not appreciate tuna sandwiches (or their lingering odor) as much as you do. When decorating common spaces, check with the other people who use them. Microwaves and refrigerators are available for rent from RAD services. Availability is limited, so consider sharing with suitemates. This would also cut the cost. Maximizing room space is essential - try different furniture combinations and don't forget the space under the bed. Goodwill is an excellent resource for picking up simple essentials like dishes and utensils.

Dorm cooking beyond ramen is possible! Both rice and pasta are easy to make in a microwave, allowing for endless possibilities of additions and toppings.

When shopping for food, do not get drawn in by individually packaged snacks - the convenience is not worth the additional waste and inflated price.

Instead of spending all your Declining Balance (DB) Dollars and actual dollars at the SEM II Café, invest in an electric kettle and French press. BYOB (bagels, that is) to toast in the café's toaster.

Make sure you have a good study space in your room, especially since the library's hours are not conducive to the inevitable all-nighters.

Do not stay in your room all the time, no matter how cozy you made it! See what's going on in the common rooms, get to the CRC, find a treehouse in the woods.

The greatest thing to remember in dorm living is respect. Respect yourself by staying healthy, respect your roommates by being responsible and keeping communication, and respect the overall community by being mindful of your decisions and their consequences.

DORM RECIPE:

MICROWAVE APPLE CRISP

1 apple (Granny Smith works nicely)
 1 tbsp water or apple juice
 1 ½ tbsp sugar
 pinch of salt
 1 package cinnamon oatmeal
 1 tbsp butter

Chop the apple into equal pieces. Place in a bowl with the water/juice, sugar, and salt. Mix so the apples are evenly coated. Microwave for 4 ½ minutes or until the apples are translucent and tender. Microwave powers vary, so keep an eye on it. When the apples are done, drain the excess liquid. To make the crumble topping, pour the oatmeal into a bowl and add the butter. Mix together until grains stick together and the butter is well incorporated.

Pour over the baked apples and microwave for 15 seconds.

Enjoy!

Utilize your CAB

Kelli Tokos

Contributor

Since the founding of Evergreen, the College Activities Building (CAB) has been a focal point. After thirty years of students bustling in and out, the CAB needed a renovation. For this reason, back in 2006 the "CAB renovation" fee began to show up on the tuition break down for each student. \$5.75 for each credit was added onto the tuition each quarter, along with the various other student fees. For a full-time student this adds up \$92 per quarter, \$276 per year. Given that the average enrollment at TESC is 4,900 undergrad students, each year around \$1,352,400 is collected for the renovation for the CAB.

Your \$276 per year renovation fee should serve as personal motivation to visit the CAB and utilize what the building has to offer. Three chief eateries are located in the CAB: the Greenery, the Flaming Egg-

plant, and the Market Place. The Greener Store, also known as the bookstore can be found inside with everything a new or returning student requires. The Student Activities center is located upstairs (Cooper Point Journal office adjoining), just down the hall from one of the Student Art Gal-

eries. One the first floor is KAOS radio, broadcasting everything you can imagine. In addition, if the library isn't quiet enough for you, the Quiet Lounge on the second floor might be the place to go.

The CAB is ready for all Evergreen students to take advantage of what it has to offer. You are paying for it, after all.



Construction was still under way into the start of the 2010-2011 school year. Archive photo

Is YOUR PHONE SMART ENOUGH?



SCAN THIS CODE
AND SEE!



Comic: Grayson Delfaro

Discovering a Destiny: First impressions from an out-of-towner

Bianca Velasco

Student Contributor



As long as I've been contemplating life after high school, I've had my sights set on attending Evergreen. That is, since long before high school even began.

Now, after one year of community college and newlywed, with more than a little anticipation brewing in me as I stand on the edge of "real life" awkwardly lugging two massive suitcases, I've finally found myself at the feet of the statuesque Douglas Firs that line the campus of my dreams; the grand pinnacles of my success, which seem to represent the larger world outside of Philadelphia that I had only read about.

Mount Rainier's ghostly presence on the outskirts of Olympia haunts my peripherals; downtown's colorful, raw culture is entrancing and genuine. As a girl who remains unimpressed by every east coast metropolitan area I've visited, including Miami and Manhattan, it is safe to say that Olympia draws a very particular sort of folk—certainly not the type to be swayed by a huge population, swells of tourists or a plethora of glitzy lights.

The students at Evergreen seem to come from an even more filtered stream. They are fully aware of their carbon footprint, and intent on preserving the vast beauty and resources that our lush environment so generously provides. It is certainly difficult to refrain from becoming captivated by the enchanting forests and dignified mountains that surround campus. Evergreen takes pride in its pledge to sustainability—they love their environment, and Mother Nature seems to love them back.

Evergreen students also seem to be "meant for" the school—it is not a pool of nameless faces, each trying to cling to a vague sense of identity at an institution that does not encourage their students to embrace their individuality. Evergreen's unique curriculum and philosophy send a bold message of freedom that runs like a constant current throughout the student body, staff, and faculty. As nerve-wracking as it was for me to move closer to Russia than my family, the welcoming air of Evergreen is something that cannot be denied as soon as you've arrived on campus.

There is nothing else to be but yourself. There is no unspoken code or social cookie cutter to conform to or rebel against. Evergreen is a school for the brazenly genuine, the student who disregards what "ought to be", and instead is bent on discovering their own true destiny.

After all of the sleepless nights back home, a red-eye flight at an obscene hour, and an awkward first banter with my new roommates, I must say that moving here from the east coast has not only been worth it, but a relatively easier transition than I had anticipated. I may not be a freshman, eager to embark on the ideal college experience, untainted by the realities of a heavy workload and student loans.

I am, however, an outsider here by definition—just a girl from Philly with an east-coast smirk and a tell-tale high-strung demeanor—but the city of Olympia, and Evergreen in particular, has welcomed me without saying a word. If there is any campus willing to embrace their transfer students from far, far away, it's Evergreen. As a transfer student, I will be attending the New Student Orientation September 17-25. Now that I am finally here, there are no limits to what I can accomplish, or anyone else who's been seeing Green in a different time zone.

No money for music

Kelli Tokos

CPJ Member



It's the one universal thing everyone can understand: music. It's also one of the first things to go when budgets get cut.

As a transfer student to The Evergreen State College last fall, I had high hopes for the music scene. Since K Records Company is based in Olympia and has signed musicians such as Beck, Modest Mouse and Bikini Kill, the Puget Sound has gained a respectable reputation in the music industry. Olympia can be considered one of the centers of the post-hardcore and anti-folk genres, and even the "riot grrrl" movement back in the 1990s. If only there was a time machine to hop into and experience what Olympia used to be.

I'm an Olympia native, 21 years in the making, and I hear older locals describe the good ol' days when Nirvana (an unknown at the time) played their first gigs at Evergreen. Kurt even smashed his first guitar at a Halloween dorm party in 1988. Not to mention the front-woman of Bikini Kill and Le Tigre, Kathleen Hanna, wandered through the halls of Evergreen. This is only the tip of the Olympia Music History iceberg, but I won't get any deeper.

From my experience and others I've talked to, Olympia is lacking in live music events. There are a few, such as Music in the Park during the summer, and the occasional folk artists playing in taverns or coffeehouses. We have two venues downtown that could easily accommodate a larger show: the Capitol Theater and the Washington Center for Performing Arts. Yet they seem to be limited to theatre performances and film showings, with the sporadic musical concert squeezed in. This leaves one large venue available to utilize: The Evergreen

State College.

With multiple locations on campus, such as Red Square, the Performing Arts Center in the Communications building, and even the Library Lobby, Evergreen would be perfect to host musical events, just as they did in the past.

For thirty years TESC had been used as the location of Super Saturday. This event, held on the same weekend of June every year, had live music, as well as local vendors of arts and crafts, food, and more. Fifteen to twenty thousand community members would attend this free event yearly. In 2009, the school made the decision to retire Super Saturday due to the rising expense of around \$20,000 annually.

The main cause of the declining musical events on campus and the canceling of events such as Super Saturday are budget cuts and lack of funding. Things can't be free anymore in this economy, which is a sad, but true. When I have ventured to other schools and attended music events or festivals, there were fees. We had to purchase tickets to be admitted. Now this may turn away many people from events, but it is the only way to be able to have them.

Maybe instead of doing away with events in general, a cover could be charged for people in attendance. For example, Super Saturday had 15,000 to 20,000 people attend, and the expense was \$20,000 for each year. If each person paid \$4 to attend, the expenses would be covered and there would even be revenue. Evergreen wants to continue to have low-cost community events, and in my opinion \$4 to attend an all-day festival filled with music, art, and food, sounds like a good deal.

The history of music in Olympia intertwines with the history of music events at Evergreen. College campuses are vital venues for struggling artists trying to get their break. We should try to bring back some of the musical glory found in the archives of TESC, even if it means paying a few dollars.

Letter from the Editor



Jo Sahlin

CPJ Staff

My ambitions at Evergreen were simple: journalism, writing, and maybe some French, music, and traveling on the side. I got involved with the Cooper Point Journal as soon as I'd dumped my clothes and minifridge in my dorm room and said a tearful goodbye to my parents.

Dazed as I was from the freshman experience, I had the audacity to apply for three positions at the CPJ. I became a page proofer and spent long days and even longer nights helping produce what was then a 16 to 24 page print edition.

Besides a love for the open-sub-

missions policy of the CPJ, that was about the extent of my involvement. I didn't do much outreach with the organization, and I couldn't help resenting the times I'd stumble back to my dorm room at dawn—for all the wrong reasons.

It took me over a year to understand the difference between the Cooper Point Journal student organization and its news publication. Some people never get it.

See, the CPJ is quite unique. Unlike other college newspapers, we do not hire students, and we do not have employees. We understand that a college (especially Evergreen) needs an outlet and a forum for student expression. Students have recognized that for decades.

What is more, students have recognized that sometimes the traditional classroom experience—even the break from tradition on which Evergreen prides itself—is not enough. That's why the CPJ organization's purpose is to provide students with a learning laboratory.

The school does an exceptional job of providing students with oppor-

tunities like internships, contracts, and even employment. But the benefits of higher education lie in finding resources in one's peers.

You need the Cooper Point Journal.

A student publication like the CPJ provides learning opportunities and resources not only for things like technology, journalism, ethics, and writing. It also gives students a chance to learn about and practice leadership, ethics, and critical thinking.

I believe it is so rare (yet fundamental) for students to have this opportunity—where we are not put in classrooms and taught to write notes passively, but instead where we are challenged every hour of every day to think critically and reach full individual potential AND recognize the potential of an entire group.

The potential of the CPJ student group, unformed as it is in these wee hours of the 2011-12 school year, is monumental. There's a lot to do. This year we're accepting the challenge of producing a solely web-based publication—one of the first for colleges anywhere.

The catch? The CPJ's potential is significantly lessened without every student's participation.

You don't need to be a CPJ member to contribute.

You don't need to be CPJ staff to be a member.

You don't need to be an expert to want to learn.

I cannot stress this enough. It's taken too many editors too long to figure out that students are the greatest asset this organization has. We are not a student organization without students. We are not a student publication without students.

The first (or next) time you rant or rave about something on campus, you're going to wish the whole campus would pay attention. You're going to wish someone would tell you the truth about the college budget. You're going to wish you knew what local band to see next weekend.

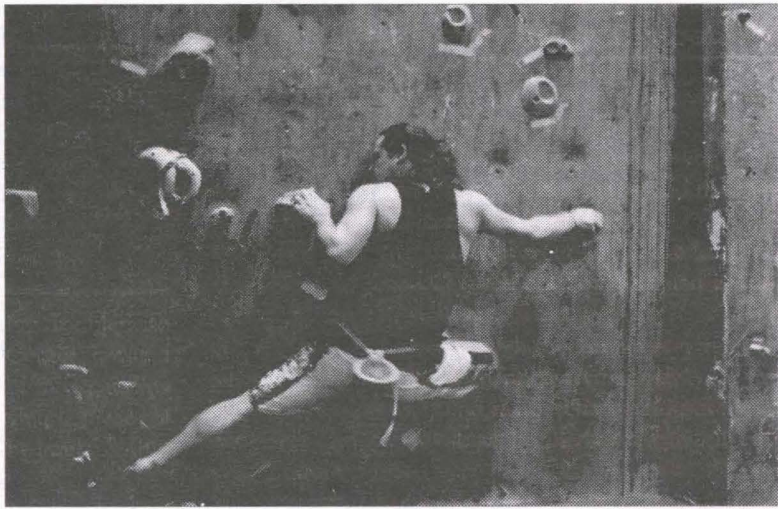
I said before that you need the Cooper Point Journal for all this. But the truth? The truth is that you need your peers. You need yourself. And WE need you.

College Recreation Center

Besides the Language Laboratory, Writing Center, and QuaSR Center, there are other important resources available to students throughout the school year such as the College Recreation Center. Located next to the Communication building, the CRC can provide a nice break from studying all day.

Inside students can find a wide variety of activities to help deal with stress or improve ones health. Options are the key. From working out alone or participating in a student run class, the world is your oyster. The CRC provides swimming and diving pools, a rock climbing wall, yoga and tai chi classes, stationary bikes, racquetball courts, dancing rooms, and a gymnasium.

The CRC might not be the most academic of all resources, but it is great way to enjoy time away from classes and to meet new Evergreen students.

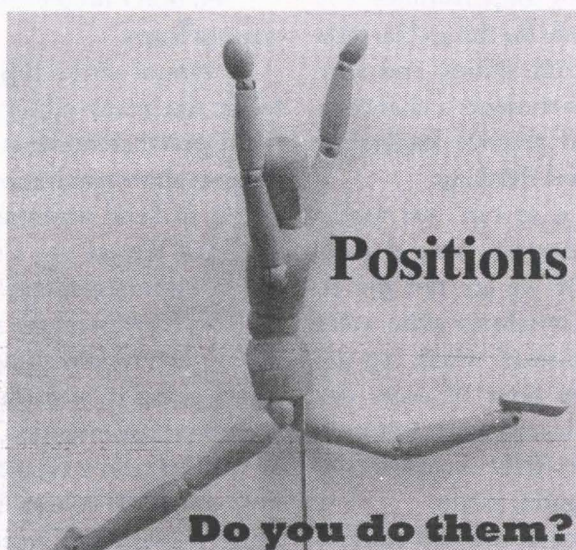


The Evergreen Bike Shop

The Evergreen Bike Shop is a student led, community run, do-it-yourself bike shop that is open to the entire Olympia area. Our goal is to provide various resources to the community in order to promote cycling as an active lifestyle, as well as educate people regarding alternative transportation issues. The shop tries to provide an alternative to the often prohibitive nature of bike repair and culture both in financial cost and accessibility. By maintaining a free learning environment where anyone, student or not, can develop skills of bike self reliance, the shop encourages a developing ethic of environmental and social consciousness.

We are run by volunteers who all have varying backgrounds in bike maintenance. The shop provides tools, lubes, work stands, spare parts, books, and space for project storage. We also have small necessity parts for sale at reasonable costs.

For info on getting involved with The Evergreen Bike Shop, please email theevergreen-bikeshop@gmail.com or show up to our meetings, Wednesdays at 2pm, 1st floor of the CAB (College Activities Building), Room 135



The CPJ needs section coordinators, reporters, copy editors, photographers, proofers, and more. Find a complete list of positions online at org.cooperpointjournal.com. Apply there or in person at CAB 332. Email applications to cpj@evergreen.edu!

Language Lab

It would be nice to speak another language, right? Maybe just in case you traveled to Mexico? Or wanted to parlez francais on a date?

Rosetta Stone, a language learning software, advertises its product for a five-payment plan of \$100 per month. And that's for a single-language program. There are discounts for students and teachers, but let's face it- our pockets are being drained quite enough, thank you very much.

Evergreen's Language Lab, located on the third floor of SEM II at A3116A, offers at least one level of Rosetta Stone in ~ wait for it ~ twenty-three languages. In addition, they have other audio files, textbooks, and practice tests for some languages. Lab aides keep the office open for somewhat limited hours to help with homework, software, pronunciation, and any other language needs you have.

The more interest people show in the Language Lab, the more they can earn more language programs and support. Go this year and make use of the 6+ computer stations and resources there!

M-Th 12-8 pm
Fri 12-5 pm
Sat 12-3 pm

Writing Center

As an Evergreen student, solid writing skills are a must. If you're having trouble with an essay, creative piece, or evaluation, look no further than the Writing Center. Located inside the Library on the second floor, the Writing Center is a useful tool in expanding your writing horizons. Tutors are standing by to assist you with any problematic pieces of writing. Call 867-6420 or stop by to make an appointment. Fall hours will be available during Week 2.

The Flaming Eggplant

The Flaming Eggplant is a student-run, locally sourced, and community-focused café located on the third floor of the CAB. First opening as a small trailer on Red Square in 2008, the café was started by the now defunct Students Organizing for Food Autonomy in response to Evergreen's contract with Aramark.

Besides being an alternative to other food services on campus, the Eggplant also exists as a student gallery and performance space. The menu offers omnivore, vegetarian, and vegan fare, nearly all of which is organic. All ingredients are locally sourced from businesses that exhibit sustainable and ethical practices, such as Olympia Coffee Roasters, Blue Heron Bakery, and various Washington farms, including the Evergreen Organic Farm.

The absence of the Coca-Cola, Nestle, and Monsanto corporations from the menu is a deliberate choice based on those companies' practices. The success of the Flaming Eggplant demonstrates the ability and determination of Evergreen students to work toward self-operation and sustainability.



Media Loan

It's your go-to place if you would like to borrow any audio, video or photography equipment. The equipment can only be checked out by students and staff of TESC with valid ID. Some of the equipment requires proficiency tests prior to check-out. Media loan is located on the second floor of the Library Building, L2504.

Briefs by Lewis Mikkelson, Melkorka Licea, Catherine Nolan, and Jo Sahlin.



**NOW HIRING
BOARD MEMBERS!**

The S&A Board has
\$\$\$ Thousands \$\$\$
to spend annually.

That money comes from every Evergreen student paying a student fee of over \$500 a year.



Do you want the opportunity to make the decisions on how to spend it?

The S&A Board is now hiring new Board Members for the 2011-2012 academic year. A board member attends two meetings a week during governance hours and actively engages in allocating funding for campus programming, events, and student group needs.

For more information, pick up an application at the front desk in Student Activities or visit the S&A Board website: <http://www.evergreen.edu/activities/sanda.htm>.

HURRY! Applications and resumes are due Monday, October 3rd by 5:00PM to the front desk in Student Activities (CAB 320).

Forest Legends



by Haley Kemper

Contributor

but mysteriously peeping through the mist to those who know to look. as night falls upon the train of students, flashlights flick on and phones illuminate the feet in front. whispers ring throughout the woods, and smoke drifts past in voluminous clouds. flickering red and orange light from a campfire sparks the night sky and the first of the group descends upon the blaze. these woods spill secrets in your ears, steal your heart, and open your eyes. the ground beneath your feet hums with a life of its own, you have only reached the surface. its jaws will open and draw you in, those alone it deems worthy. so stray from the path, experience its splendor. allow the forest legends to speak their truth, listen close and you will hear.

mossy fingers clutch at empty air, gray clouded skies wend their way through the treetops and all around, you can hear the excited cries of freshmen as they lose their way through the foreign evergreen woods, desperately trying to discover the bluff and the beach. tree-houses loom above beanie heads, invisible to most,

Tchaichalksky 2009 Overture



Melkorka Licea

CPJ Staff

Gallivanting throughout the dorm hallways is definitely a chosen past time for many freshmen, myself included. In cases of extreme boredom, it is often entertaining to resort to a more mischievous form of gallivanting. Ding-dong ditch proves faulty since the suite doors are usually locked, and spray-paint graffiti would get you into some deep shit. So what better way to communicate funny and forbidden messages to your friends than to decorate doors and hallways with chalk art? It's innocent, the stuff wipes right off, but it still gets the point across.

So my roommate and I set off on our shenanigan-ridden afternoon, drawing macaroni waterfalls and creepers gazing in inappropriate places. It was all in good fun, and the best part was that we were being sneaky and not doing anything wrong all at the same time.

Yet suddenly on the fourth floor of A, we were stopped in our tracks by an RA, "hey you guys stop where you are!" Sheepishly we hid our chalk pieces, feeling like we had been caught stealing the cookie jar in third grade. "Give me both your A numbers and names. You guys are getting grievances", she directed in a stern voice.

Are you kidding me? We are getting grievances for drawing with CHALK? Defacing public property that costs money to repair is one thing, but wiping some friggin' chalk off a wall? Good grief.

"No way," I said with a steadfast tone, eyeing my roommate to sprint out of this unjust power-abusing situation. All at once, as if we had counted down the moments in our heads, we made a break for the stairs, leaving the crabby RA in the dust, and didn't stop until we ducked into my roommate's homemade bed cave.

Going for the gingerbread gold



Jo Sahlin

CPJ Staff

I was skeptical about the kinds of activities at the HCC my freshman year. Poster decorating? Board games? Booooooring. My friends and I preferred to stay in our loft (I lived on the tenth floor of A-Dorm), swap music, or walk in the woods.

In retrospect, that was a dumb idea. Why would you pass up free crafting supplies that are available for your use? Plus, making your dorm room spiffy is a fantastic way to get rid of the SADs (Seasonal Affective Disorder).

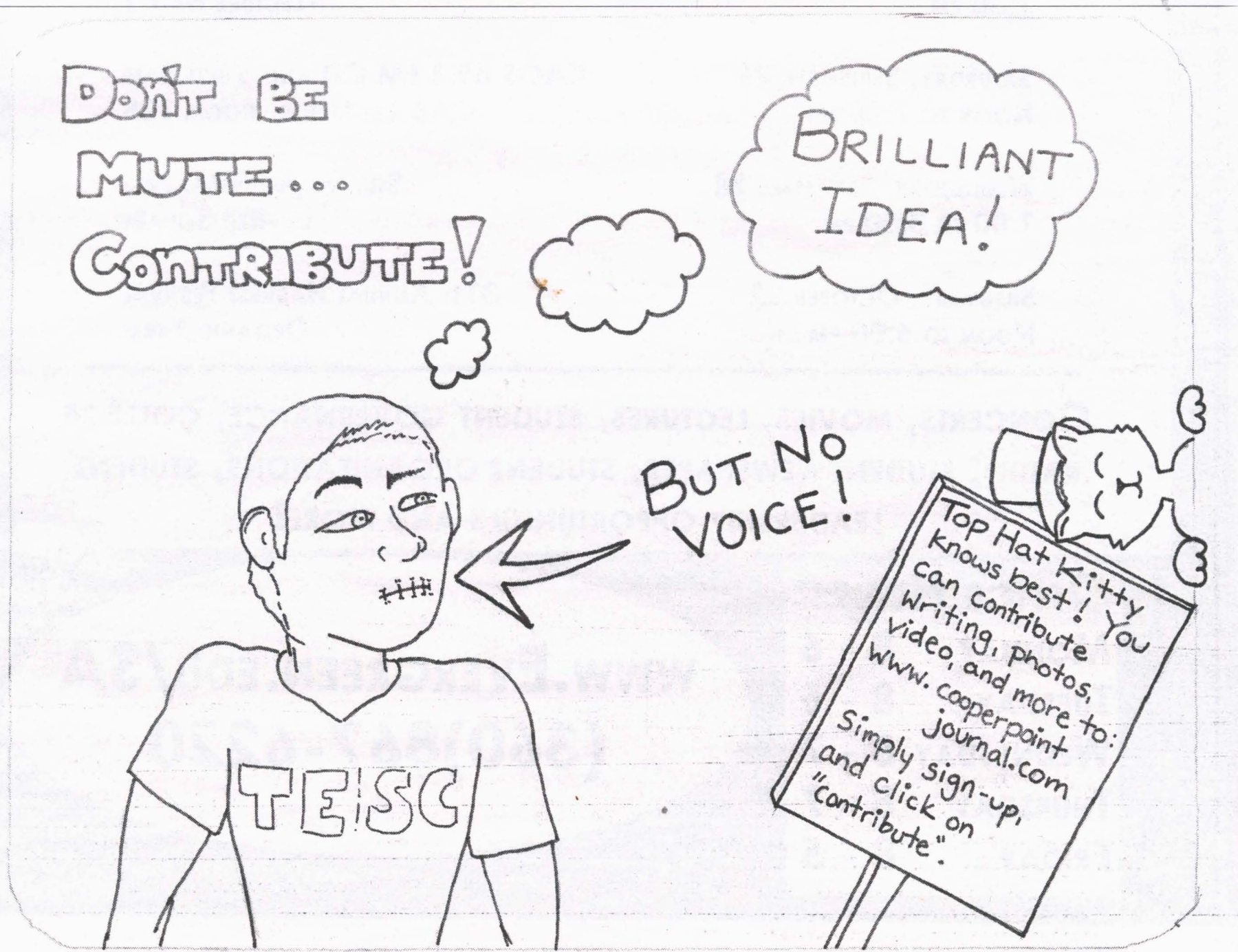
We knew when the HCC offered an evening of gingerbread house decorating, we couldn't pass it up. We knew better than to miss out on a complimentary sugar high. The competition was on: the team with the best gingerbread house would win a "lock-in" at the HCC for a night. They could invite up to twenty people or so, and RAD would provide free [Aramark] pizza and a projector so we could watch movies.

That was more than enough incentive. We dragged ourselves down to the HCC

and got to work.

I have some pretty creative friends, but that night we outdid ourselves. While others sat and gorged on the licorice straws and sour worms, we got to work. Our gingerbread house turned out to be fantastically festive, and (needless to say) we won the HCC pizza party.

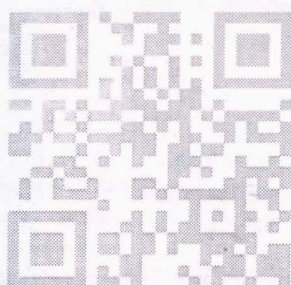
We had looked forward to eating the decadence, but it was too beautiful. It sat in our loft for weeks, admired but never touched.



STUDENT ACTIVITIES

IT'S ALL ABOUT THE STUDENTS!!

EVENT CALENDAR,
FACEBOOK, TWITTER
& MORE!



GOT A
SMARTPHONE?
CHECK US OUT
ONLINE!

Visit us on the 3rd floor of the College Activities Building

MONDAY, SEPTEMBER 19
NOON TO 2:00 PM

STUDENT ACTIVITIES OPEN HOUSE
-CAB 3RD FLOOR

WEDNESDAY, SEPTEMBER 21
1:00 TO 2:30 PM

ORGANIC FARM WALK
-MEET IN FRONT OF LIBRARY

THURSDAY, SEPTEMBER 22
7:30 PM

ROCKY HORROR PICTURE SHOW
-LECTURE HALL 1

SATURDAY, SEPTEMBER 24
NOON TO 7:00 PM

KAOS 89.3 FM CD AND VINYL SALE
-CAB 1ST FLOOR, ROOM 125

WEDNESDAY, SEPTEMBER 28
1:00 TO 3:00 PM

STUDENT ACTIVITIES FAIR
-RED SQUARE

SATURDAY, OCTOBER 22
NOON TO 6:00 PM

31ST ANNUAL HARVEST FESTIVAL
-ORGANIC FARM

CONCERTS, MOVIES, LECTURES, STUDENT GOVERNANCE, COLLEGE RADIO, STUDENT NEWSPAPER, STUDENT ORGANIZATIONS, STUDENT LEADERSHIP OPPORTUNITIES AND MORE!

OFFICE HOURS:

MONDAY	8 - 6
TUESDAY	8 - 6
WEDNESDAY	8 - 7
THURSDAY	8 - 7
FRIDAY	8 - 5

WWW.EVERGREEN.EDU/SA
(360)867-6220

Men's Soccer: Ruthless

Lewis Mikkelson

CPJ Staff

As the saying goes, third times the charm was spot on for the Evergreen Men's soccer team on September 6th in their attempt to pick up their first win of the pre-season. The previous two tries ended in defeat with the Geoducks conceded 5 goal in those two games and not being able to find the back of the net along the way.

The scoreless streak would come to an end before the match really got a chance to develop. In the fifth minute Evergreen got their first scoring chance.

With Evergreen's Corey Johnson (Longview, Wa./ Mark Morris H.S.) feeding the on rushing Jack Fortune (Monroe Wa./ Monroe H.S.) the Walla Walla defensive appealed for offside but no decision was coming and the Fortune had an one-one-one with Walla Walla's keeper, Jonathan McLane. Fortune showed his coolness with a well taken finish which gave a 1-nil advantage to the Geoducks.

Evergreen controlled the tempo of the match and Walla Walla never really threaten the Geoduck's goalkeeper with any scoring chances. If a chance did develop it was easily dealt with and then the Geoducks pressed forward in their attempt to double their lead.

The Geoducks created plenty of chances in the first half to increase their lead but could not find the back of the net. A few of the chances ended with Evergreen players

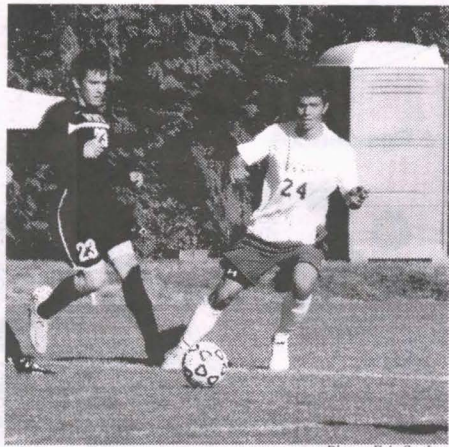


Photo: Eric Spahr

Evergreen's #24 Caleb Phillips braces himself as Walla Walla's #23 Chandler Jordana closes in.

was difficult to believe that Evergreen had only scored one goal in the first half of play. With Evergreen not taking advantage of their opportunities, would it come back to haunt them in the second half?

The fear that Evergreen would give up their lead quickly evaporated with Walla Walla still not showing any conviction going forward.

Similar with the first half Evergreen continued to fail to capitalize on scoring chances to put the match beyond the reach of Walla Walla. In the 66th minute, Evergreen saw an opening.

Evergreen finally doubled their advantage when Brice Boam (Douala, Cameroon./ Edmond C.C.) powered his way into the box and his shot was saved but the rebound rolled into the path of Johnson who wasted no time in firing past McLane.

Ten minutes later, another Evergreen attack was threatening the Walla Walla goal and Junior George Bundy was fouled and brought down inside the box and was rewarded a penalty kick for his effort.

Up stepped Bundy who sent the McLane the wrong way and he gracefully slotted the ball into the back of the net.

With 15 minutes left it was all but over. Evergreen confidences grew exponential after taken a 3 goal led and were able to string several nice passing moves that all most saw them increase their led even more. Scoring another goal was not the priority and the focused shifted to maintaining the shutout. And that is what exactly what happened, Evergreen were able to persevere the shutout over Walla Walla and finally collected their first win of their pre-season.

Women run riot over the Bruins

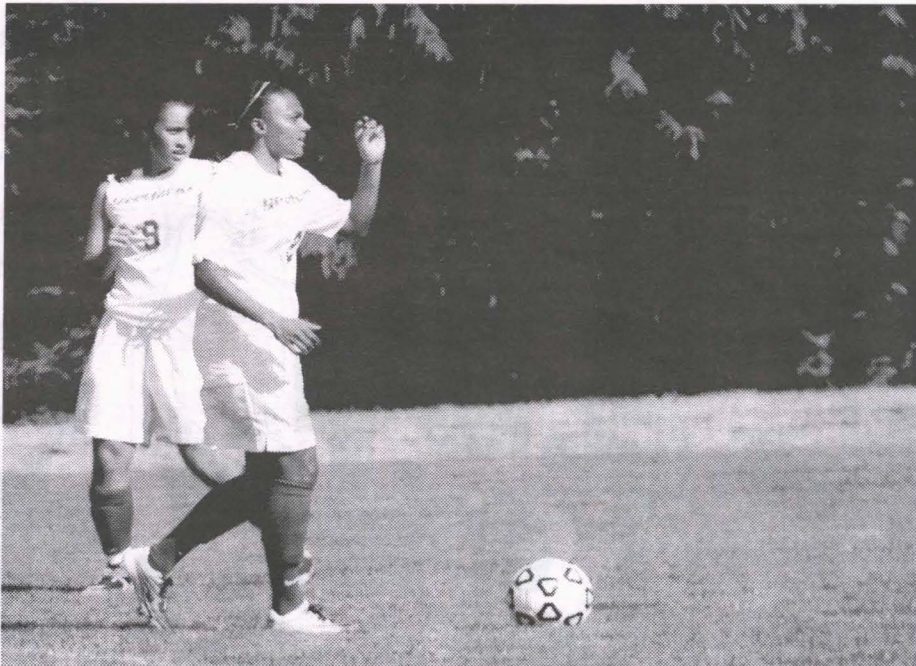


photo: Lewis Mikkelson

Evergreen's #9 Shani Ramento and #2 Lea Rohan look up field during a break in the action. Evergreen proved to be too much for the George Bruins as the Geoducks picked up a 4-2 victory.

Lewis Mikkelson

CPJ Staff

A match that was impressive, nervy and exciting to watch. The Evergreen Women held nothing back as they fired 4 past the George Fox Burins in the last preseason fixture and now have won two matches on the trot.

The first of the four was breath taking goal. A move that originated in the mid-field and saw Evergreen Women linking 12 consecutive passes before Rayna Murphy (Longview, Wa./ Mark Morris H.S.) crossed to an unmark Tersea Lopez (Yakima, Wa./ Yakima Valley C.C) at the far post who headed past the motionless Bruins goalkeeper.

Evergreen second goal came in the 26th minute when Anastasia Daniels (Olympia, Wa./ South Puget Sound C.C.) was able to chip the George Fox's Becka Doyle from outside the box.

In less than 15 minutes, Evergreen had rattled the cages of the Bruins and were in position to turn this into a rout. The Geoducks created a few more chances but could not find the finishing touches to get a third past the Bruins goalkeeper.

The impressive Geoduck performance that was on display was short lived, when the Bruins won a free kick 30 yards from goal. Evergreen conceded a soft foul and the Bruins took full advantage by scoring from a free kick and decreased the deficit to just one goal in the 32 minute.

Still holding onto a one-goal lead seemed to make Evergreen switch from playing impressive soccer to nervy soccer. And three minutes later it showed. Bruins Shannon Olson rushed onto a through ball

and beat Evergreen's goalkeeper Lauren Davidson who came out to make the save but to no avail, the Bruins leveled the score.

The rest of the first half saw both sides failed to gain an upper hand and the score line remained the same going into the break. It was difficult to believe that Evergreen had scored twice and then conceded twice in the less than five minutes.

When played resumed it was clear to see who was the better side. Evergreen dominated the field of play. At their best, they played the ball effortless around the pitch and the Bruins were left to chase. The tired Bruins created openings in their defense and it was only a matter of time before Evergreen would capitalize.

Evergreen exploited these openings when Brianna Speed (Seattle, Wa./ Lake Washington H.S.) was able to beat her marker and create a one-o-one situation with the Bruins keeper. She calmly fired the ball past the Bruins keeper to give Evergreen a 3-2 advantage (time).

Evergreen's fourth came 8 minutes later. Evergreen's Deirdre Dornay (Mercer Island, Wa./ Bellevue College) was able to firing towards goal only to see it saved and ever so quickly Daniels was on hand to fire rebound back into the Bruins net to clam her second goal of the afternoon.

The fourth goal sealed it. For the remaining 21 minutes Evergreen showed their class by retaining possession, which in turn killed off any believe that Bruins thought that they could form two goals down a second time.



Photo: Eric Spahr

Evergreen's #5 Ramon Ramos looks to slow the play down during the second half against Walla Walla University as #1 Mitch Treend looks on.

straying offside. Unlike the first one-on-one ended in a goal the next three one-on-ones with the Walla Walla goalkeeper, Evergreen failed to score.

When the first half came to a close it



See more women's soccer photos at cooperpointjournal.com/recreation

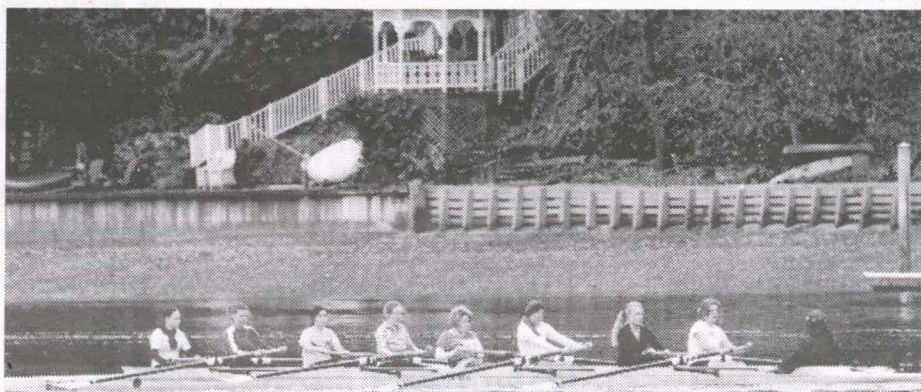


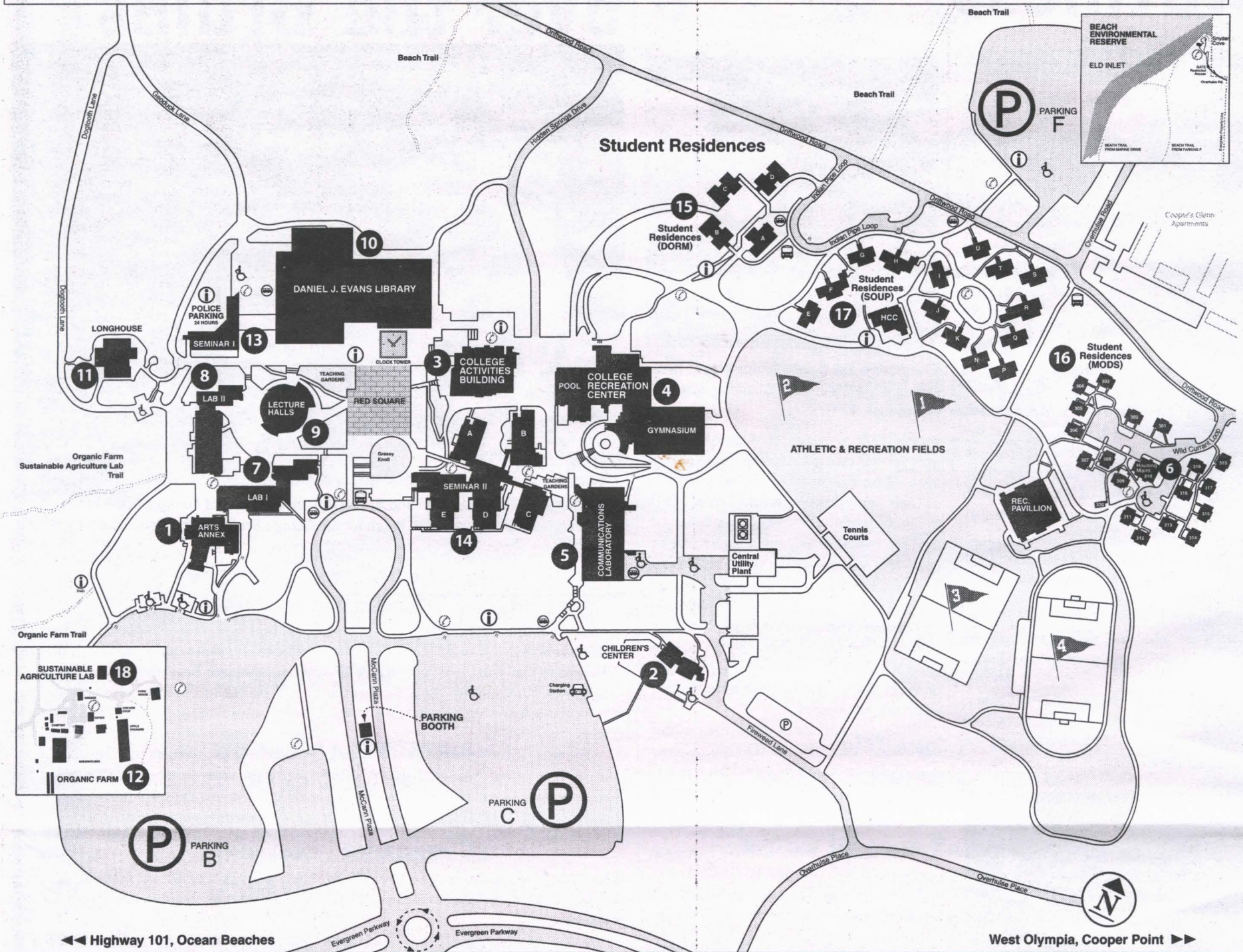
Photo: Donna Shattuck

The Evergreen crew team is looking for new rowers when the school year resumes. Stop by at the crew team's table at the Student Activities fair on September 28th in front of the College Recreation center (CRC) to find out important information about joining the crew team.

EVERGREEN
THE EVERGREEN STATE COLLEGE

Campus & Community

Connect with us: 360-867-6000 | www.evergreen.edu



1 Arts Annex	6 Housing Maintenance	11 Longhouse	15 Student Residences (DORM)
2 Children's Center	7 Lab I	12 Organic Farm	16 Student Residences (MODS)
3 College Activities Bldg (CAB)	8 Lab II	13 Seminar I (SEM I) Police / Parking	17 Student Residences (SOUP)
4 College Recreation Center (CRC)	9 Lecture Halls	14 Seminar II: A-E (SEM II)	18 Sustainable Agriculture Lab
5 Communications Laboratory (COM)	10 Library/Daniel J. Evans Library		

www.evergreen.edu/tour for the most current maps and location information

EMERGENCY PHONE

ACCESSIBLE

INFORMATION

DIAL-A-RIDE

PUBLIC TRANSPORTATION

PARKING AREA

Calendar for September 16- October 6, 2011

<p>Important O-Week Events:</p> <p>All Campus Convocation: A Convening Moment Monday, September 19 10 am -12 pm Location: CRC</p> <p>International Student Orientation Monday, September 19 12pm-2:45pm Location: Sem II E1105</p> <p>Evening and Weekend Studies Orientation Monday, September 19 6pm-8pm Location: Sem II E1105</p> <p>Community to Community Friday, September 23 1pm-5pm Location: Red Square</p>	<p>Academic Planning Workshop Tuesday, September 20 - Friday, September 23. 10:30-12:30pm Location: Sem II C1105</p> <p>Diversity at Evergreen Tuesday, September 20 3pm-5pm Taking Care of Self and Others Wednesday, September 21 Safety and the Red Zone 3pm-5pm Location: CRC</p> <p style="text-align: center;">Write down these Dates!</p> <p>Monday, September 26 First Day of Classes!</p> <p>Wednesday, September 28 Student Activities Fair Location: CRC</p>	<p style="text-align: center;">On-Campus Events</p> <p>S&A Open House Monday, September 19 3rd Floor CAB 12pm-2pm</p> <p>Wednesday, September 21- Wednesday, October 5 Getting Started Workshop 3rd Floor CAB Event Planning Workshop 3rd Floor CAB Finance Workshop 3rd Floor CAB To see a full list of times, please go to this website: http://www.evergreen.edu/activities/</p> <p>Farm Walk Red Square 1pm-2:45pm</p> <p>Rocky Horror Picture Show Thursday, September 22 7:30 pm Lecture Hall 1</p>	<p>DEAP Potluck and Meeting Friday, September 23 12pm Organic Farm</p> <p>Hillel Interest Meeting CAB 2nd Floor: Quiet Lounge 7pm Saturday, September 24 KAOS CD& Vinyl Sale! CAB first Floor 125</p> <p>Monday, September 26 CPJ Kick Off Meeting 4pm 3rd Floor CAB</p> <p>Wednesday, September 28 Fall Student Activities Fair 1pm Red square</p> <p style="text-align: center;">Off-campus Events</p> <p>October 7th and 8th Downtown Olympia Arts Walk</p>	<p style="text-align: center;">Mens' Soccer Home Matches</p> <p>Saturday, September 17 vs Concordia 1pm</p> <p>Wednesday, September 28 vs Warner Pacific College 4pm</p> <p>Saturday, October 8 vs Northwest University 3pm</p> <p style="text-align: center;">Women's Soccer Home Matches</p> <p>Saturday, September 24 vs Yakima Valley CC Noon</p> <p>Wednesday, September 28 vs Trinity Lutheran College 2pm</p> <p>Saturday, October 8 vs Northwest University 1pm</p>
--	--	---	---	---