



Special Edition

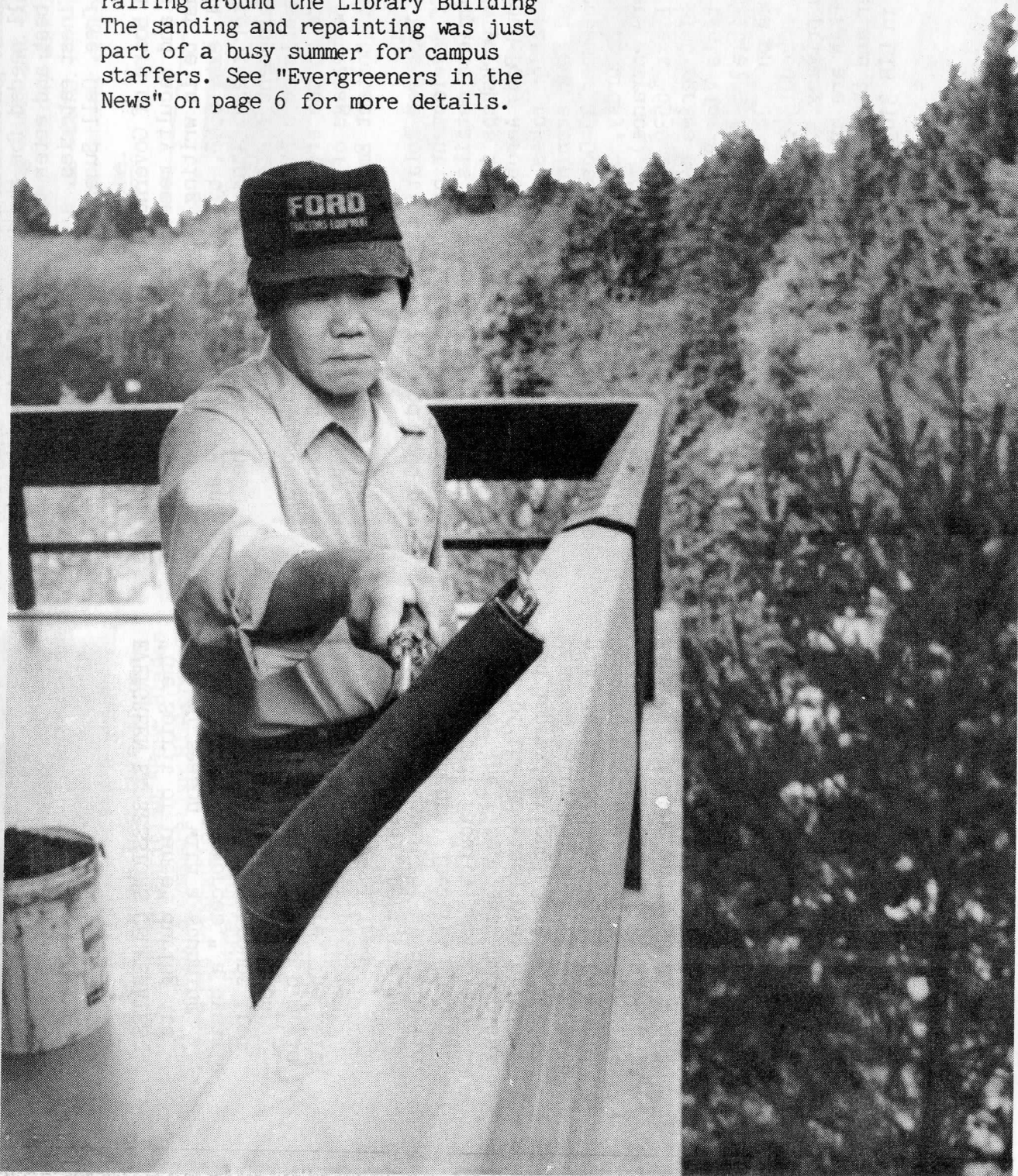
Newsletter

Happenings Inside

The Evergreen State College

September 19, 1986

ROLLING ON: Maintenance Mechanic
The Nguyn puts the final touches on railing around the Library Building. The sanding and repainting was just part of a busy summer for campus staffers. See "Evergreeners in the News" on page 6 for more details.



"The experiment works"

'86 Convocation Highlights Plans, Budget and "Shibumi"

by Keith Eisner, Information Services

Applause, laughter, a cello and flute duet, and the surprise appearance of an Evergreen regular--a big, black shaggy dog--enlivened this week's staff and faculty Convocation. Louise and Eric Moon from Bloomingdale's School of Fine Art provided the music as over 250 staff and faculty members packed Lecture Hall one on Tuesday.

After welcoming the faculty back and applauding the work of the staff, President Joe Olander introduced Board of Trustee Chairman Richard Page. "In years past," Page said, "one might say, 'Welcome back to the Evergreen experiment.' But that is no longer the case. The results are in and it's positive--this college is here to stay. The experiment works."

Strategic Plan Discussed

Olander followed Page, stating in his opening remarks that, "I'd like this college to be a little bit bigger, a little better, more diverse in its ethnicity, and a hell of a lot more fun."

He then discussed Evergreen's Strategic Plan which was approved by the Board of Trustees last month. The plan, he explained, is not completed. "Although we have a product, the vice-presidents and I are now in the phase of refining and implementing the directives of the plan." He then outlined the following major themes:

1. The Strategic Plan implies that Evergreen is going from a "culture of innovativeness to one of innovativeness and excellence." The plan calls for more program evaluation to identify and develop sources of strength across campus.

2. The plan recognizes that growth and development are inevitable and desirable and states a commitment to plan and implement such growth with great care.

3. Curriculum Development, including the commitment to community service, exploring Pacific Rim or "Northwest Studies," filling in the holes in our curriculum and establishing our strongest educational programs as "Centers of Excellence," which will help us define what we know works best.

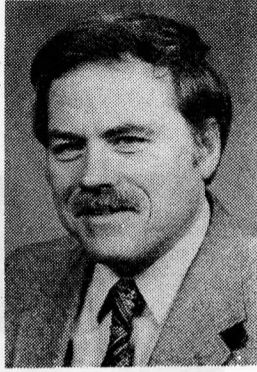
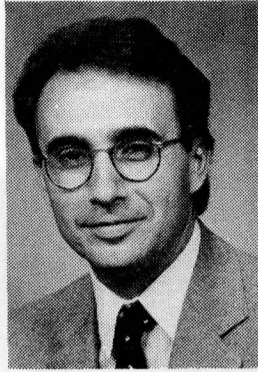
4. Greater ethnic diversification in students, faculty, staff and curriculum.

'87-89 Budget Request

The theme of Evergreen's 1987-89 budget request, said Olander, "is completing the college in an era of limited resources. I am pleased that this budget is driven by policy, not the reverse." He outlined four major initiatives.

1. Quality Improvement. The college is asking for \$1.7 million to improve educational quality for its current enrollment of 2600 FTE. Key objectives are:

- A. \$500,000 for faculty and



- program development.

- B. \$350,000 to expand the Library collection.

- C. \$90,000 to escalate assessment of academic programs.

- D. The improvement of student life through more effective administration, academic advising and increased retention and recruitment of minority students.

2. Management Efficiency. The college is asking for \$1.2 million for the acquisition of hardware and software for our business operations and increased staff development and training.

3. \$3.5 million for Enrollment Growth. "Evergreen's physical plant capacity can accommodate 3200 FTE students," said Olander, "I'm asking for an increase of 600 FTE students by 1988." He said that such growth would provide greater economy of scale and help reduce the institutional cost per student, allowing completion of necessary faculty hiring to insure quality in all Core Programs and more opportunities for advanced study.

4. Faculty Salary Increase. Evergreen joins the Higher Education Coordinating Board in recommending a 20% increase in faculty salaries. This requested increase is based on the HEC Board's study of faculty salaries at peer institutions in eight other states.

The total budget of \$45.3 million represents a 30% increase, reported Olander, and is "a hefty but honest request." He also stated that the \$16.3 million capital budget request will address such programs as safety projects, program support, property protection, energysaving projects and a multifunctional community building.

Olander closed by remarking on the nationwide obsession with the "search for excellence." "Instrumentalism," he said, "is the madness of our times." Instead, he urged an attainment of "shibumi," a Japanese concept of "inner excellence, of having a sense of your own craft and who you are."

"I am much more excited to be here this year. Good things are coming our way."

Unannounced Wag Takes Stage

During the break before Provost Patrick Hill's address to the faculty (staff were invited to stay) a black dog with a red bandanna trotted down the aisle of the

hall and across the stage, finally lying down behind the podium. "Back to Evergreen's returning values," called out one wit. Hill added to the levity by paraphrasing Olander's instructions to him: "I'll tell them everything's going to be wonderful and relaxed. You tell them about the 48 new DTF's."

Instead, Hill outlined four challenges for the new year. In brief, they are:

1. Assessment of Faculty Evaluation, including the "necessity for the faculty to rewrite portions of the Faculty Handbook that deal with reappointment and retention policies."

2. Meeting the Strategic Plan's call for reasonable growth.

3. The formation of a Native American Study Group, which will work with Faculty Member David Whitener to answer such questions as "Can the college do a better job of serving the NAS program?" and "How do we integrate a diverse set of pedagogies in one institution?"

4. Two to three hundred members of The Society for Values in Higher Education, a national organization of 1300 professionals, will be on campus next August for a major, five-day conference. Hill said that they are deeply interested in Evergreen and the experience of people who have taught at an institution where interdisciplinary study is promoted and valued. Evergreen faculty members will write essays for the conference on such topics as applied technology, agriculture and the Liberal Arts, and the feminization of inquiry. Academic Dean David Marr and Faculty Member David Hitchens will coordinate a project to write intellectual autobiographies of Evergreen faculty.

Hill predicted that this agenda will go a long way toward revitalizing our faculty, showcasing our academic excellence and bringing together the Evergreen community.



SAGA Staffer June Brown passed away on August 25, due to injuries received in an August 8 auto accident. June worked here for 14 years and the campus treasures the memory of her smile and friendliness.

Evergreen Welcomes Aboard 25 New and Returning Faculty

Add the geomorphology of Death Valley, African political thought, cave bats, the history of rock and roll, and feminist filmmaking to the treasury of Evergreen's faculty expertise and experience. You'll also find "The Image of Alaska in Literature," "Phosphate Inhibitors of Carboxypeptidase A" and "Hucksterism in Automobiles" when reviewing the background of Evergreen's 25 new, returning and exchange faculty members. Here's a brief introduction.

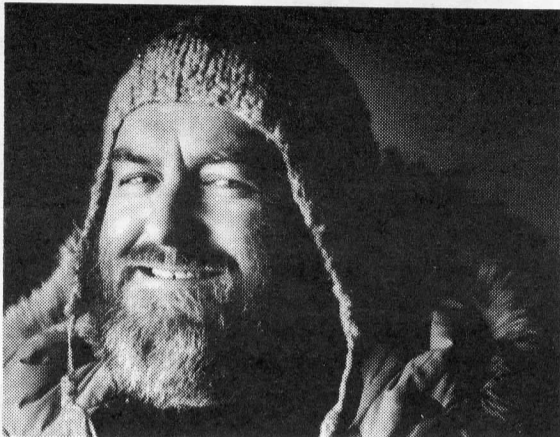
Larry Beck teaches in the "Studio Program" this fall. Degrees: M.F.A., Sculpture, University of Washington; B.A., Painting, University of Washington. Beck is a noted Native American sculptor whose major commissions include works for the King County-International Airport, the Highline Library and Seattle's Golden Gardens Project.

Andrew Buchman, an exchange faculty member from the University of Washington and Evergreen graduate, '77, teaches in the "Art, Literature and Music: New Beginnings" program. Degrees: D.M.A. Composition (pending), University of Washington; M.A., Music History (pending), University of Washington; M.M., Composition, University of Washington; B.A., Liberal Arts, The Evergreen State College. Buchman has taught music studies at the U.W. since 1984, and taught a "History of Rock and Roll" course at Shoreline Community College. Welcome back!

Paul Butler teaches in the MES program. Degrees: Ph.D., Geology, University of California at Davis; M.S., Geology, University of California at Berkeley; A.B., Geography, University of California at Davis. Butler comes to Evergreen from a teaching position at the State University College in Oneonta, NY. He has conducted extensive studies of the natural history of Death Valley.

Jerry Cederblom teaches in the "Thinking Straight" program. Degrees: Ph.D., Philosophy, Claremont Graduate School; B.A., Philosophy, Whitman College. Cederblom taught philosophy at the University of Nebraska-Omaha and is co-author of Critical Reasoning. He is currently writing a book entitled Organizational Ethics.

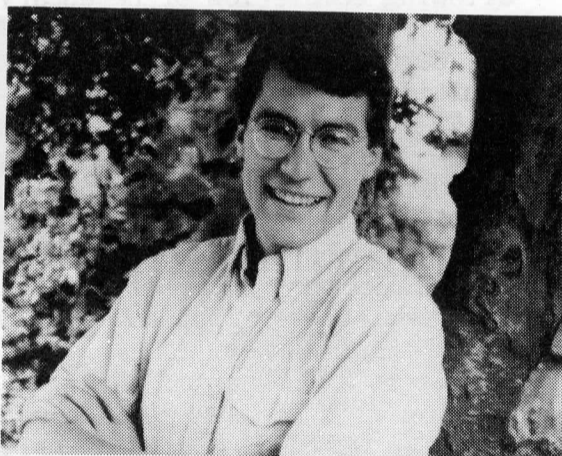
Helen Darrow, a Western Washington University faculty member, is one of four faculty initiating Evergreen's new teacher education program with Western. Degrees: B.S., Elementary Education, Wilson Teachers College; M.A., Education, University of California at Los Angeles; Ed.D., Supervision and Curriculum Development, Columbia University. Darrow has been cited in Leaders in Education, World's Who's Who of Women and Who's Who of American Women for her consultative work and writings on elementary education.



BECK

Malcolm De Weese teaches in the MPA program. Degrees: M.B.A., University of Washington; Ph.D., History, University of Washington; B.A., History, University of Arizona. De Weese has been a member of the Washington State Hospital Commission, where he worked as a principal investigator on "The Measurement of Case Mix for Prospective Reimbursement in Hospitals."

Nancy Finley, exchange faculty from Seattle Central Community College, will teach in the "Human Development" program this spring. Degrees: M.A., Psychology, Western



BUCHMAN

Washington University; B.A., Psychology, Western Washington University. Finley has taught at Seattle Central since 1971, where she developed curriculum in the fields of physiology, stress control and applied behavioral psychology.

Library Specialist Bob Haft will teach in the "Great Books" program this fall. Degrees: B.S., Psychology, Washington State University; M.F.A., Photography, Washington State University. Haft reports that he currently has work on exhibit in Moscow ("Idaho, that is," he adds.)

Larry Hall, exchange faculty from North Seattle Community College, teaches in the "Stories: Origins and Meanings" program. Degrees: M.S., Psychology, Western Washington University; B.A., Psychology, Western Washington University. His areas of expertise include teaching, counseling, com-

puters and contract mediation.

Bruce Hayward, exchange faculty from Western New Mexico State University, teaches in the "Introduction to Environmental Studies" program. Degrees: Ph.D., Zoology, University of Arizona; M.S., Zoology, University of Michigan; B.S., Wildlife Management, University of Minnesota. Hayward, who has written numerous articles and papers on bats, has exchanged houses and positions with faculty member Llyn De Danaan, who is teaching as part of Evergreen's first exchange with Western New Mexico State University.

Barbara Hammer teaches in the "Performance Media in Contemporary Culture" program. Degrees: M.A., Film Production, California State University at San Francisco; M.A., English Literature, California State University, S.F.; B.A., Psychology, University of California at Los Angeles. Hammer has produced 16 critically-acclaimed films and has exhibited her work in the U.S. and Europe.

Terry Hubbard is Evergreen's new reference librarian. Degrees: B.A., History/Business, University of Vermont; M.A., History, San Francisco State University; M.L.S., University of California at Los Angeles. Hubbard was previously the social sciences librarian at Colorado State University and a member of the National Ski Patrol.

Neil Jacobsen teaches in the "Organic Chemistry" program. Degrees: Ph.D., Organic Chemistry, University of California at Berkeley; B.S., Chemistry, University of Oregon. Jacobsen won the U.C. Berkeley Outstanding Teaching Assistant Award in 1977, and is an avid mountaineer and rockclimber.

Thomas McAllister teaches in Vancouver. Degrees: Ph.D., M.A. and B.A. in Political Science all from the University of Washington. He played Husky football and comes to Evergreen from a teaching position at George Fox College in Oregon.

Ralph McCoy teaches a group contract on "Experimental Theater." Degrees: B.A., Business Administration, Howard University. McCoy has extensive theater experience including work as choreographer/director



BUTLER



DARROW



FINLEY



HAMMER

for the Marin Shakespeare Festival, the Coeur d'Alene Summer Theatre and at the Cornish Institute.

Ralph Murphy teaches in the "Political Economy and Social Change" program this fall, and will teach in the MPA program in winter and the MES program in spring. Degrees: Ph.D., Political Science, University of Washington; M.A., Political Science, University of Washington; B.A., Political Science and Economics, University of Washington. Since 1983 Murphy has worked for the city of Lacey as a consultant/project manager, researching the impacts of a proposed 12,000 acre annexation.

Sandra Nisbet returns to Evergreen to teach in the "Family,



HALL HAYWARD HUBBARD

Community and Personal Life" program. Degrees: M.A., Theater Arts, Indiana University; B.A., Speech and Drama, San Jose State University. Nisbet won the 1982 "Spotlight Award" from the Washington Association of Theatre Artists for "the development of original and creative theatre."

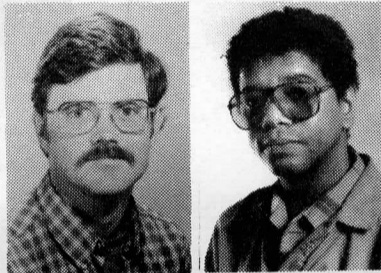
John Parker is the director of the new Evergreen-Western Washington Teacher Education Program and will teach in the "Children's Literature and Psychology" program. Degrees: Ed.D., Curriculum and Supervision, Harvard University; M.A.T., Social Science Curriculum, Harvard University; A.B., Brandeis University. Parker played a key role in the establishment of an alternative non-graded, interdisciplinary program at John Adams High School in Portland. He is also a keen student of the use of advertising slogans by the automobile industry.

Rosalie Reibman teaches in the "Human Development" program. Degrees: M.Ed., University of Washington; B.A., Psychology, University of Washington. Reibman

is writing her dissertation on the affiliation and power needs of depressed women and their spouses.

Janet Ray, exchange faculty from Seattle Central Community College, will teach in the "Human Development" program this winter. Degrees: M.A., Topology, University of Washington; B.A., Mathematics, University of New Hampshire. Ray is the author of Your Number's Up, a math anxiety book.

Bobby Righi, exchange faculty from Seattle Central Community College, teaches in the "Human Development" program. Degrees: M.A., Mathematics, Purdue University; B.A., Mathematics, Lamar University. Righi coordinates



JACOBSEN MCCOY

Seattle Central's developmental math program.

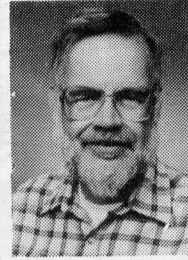
Sy Schwartz, a Western Washington University faculty member, teaches in Evergreen/Western's new teacher education program. Degrees: Ed.D., Curriculum and Instruction, Wayne State University; M.S., General Secondary Education, Wayne State University; B.S., Social Studies, Wayne State University. Last year he presented a paper on "Courage as a Curricular Concern" at a national meeting on Academic Rigor and the New Curriculum held in Philadelphia.

Satoru Taira, exchange faculty from Japan's Kobe University of Commerce, teaches in the MPI program. Degrees: L.L.M., Graduate School of Law, Waseda University, Tokyo; L.L.B., Waseda University. Taira has published numerous studies on transnational arbitration and sovereign immunities.

RIGHI (left) and RAY (right) with Seattle Central Community College Faculty Member Rachel Levine at a Washington Center for the Improvement of the Quality of Undergraduate Education meeting held last spring at Camp Bishop



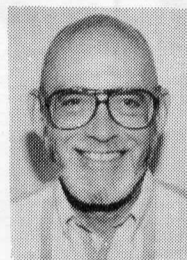
MURPHY



PARKER



REIBMAN



SCHWARTZ



SWENSON



TAIRA

John Wood will be teaching in "The Helping Professional" program. Degrees: Ph.D., Human Behavior, Union Graduate School; B.A., Journalism, San Diego State University. In addition to conducting extensive research in the areas of human relations and psychology, Wood has served as a consultant to the U.S. Department of Justice on race relations and the media.

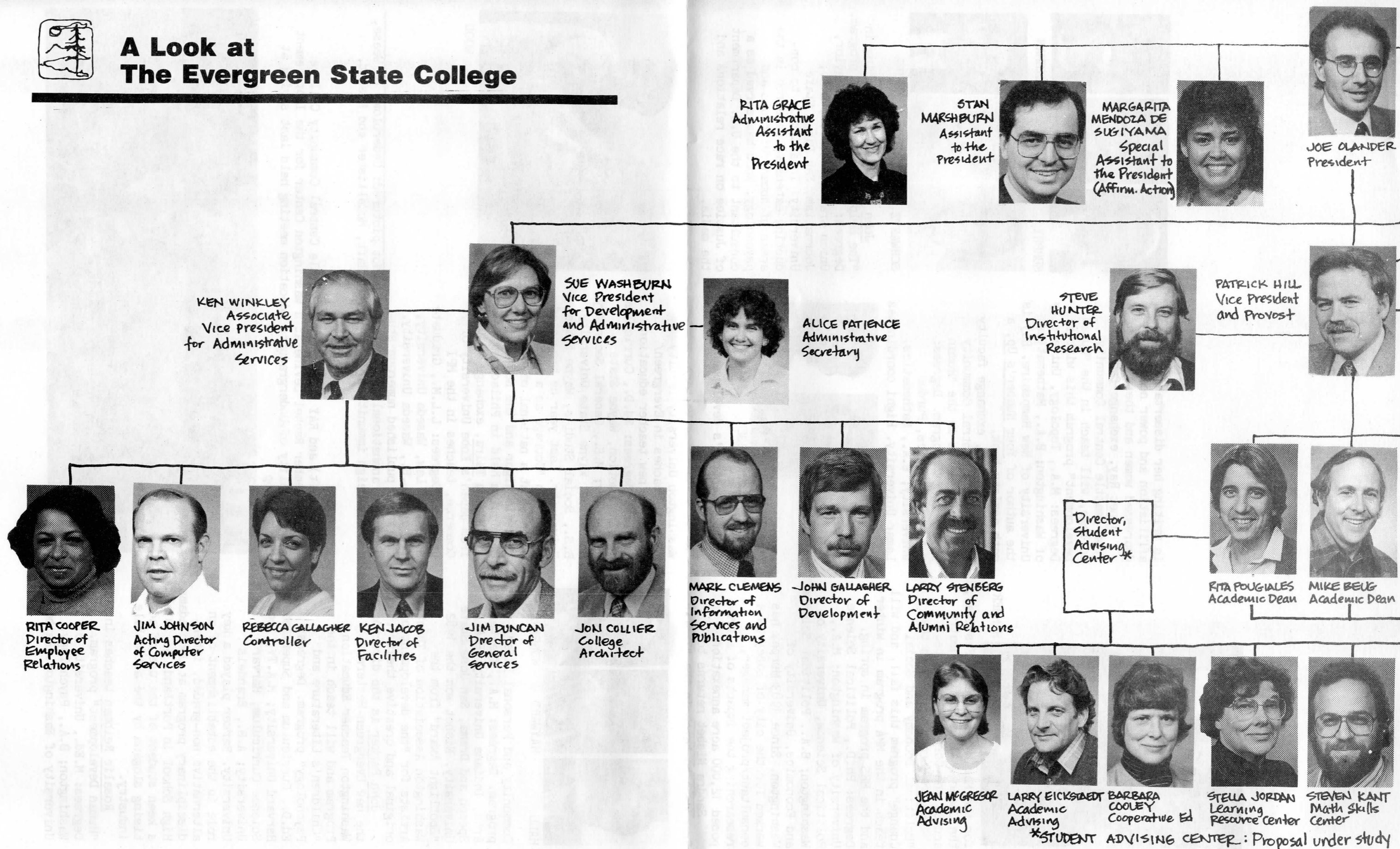


WOOD

Not pictured: Cederblom, De Weese, Haft, McCallister and Nisbet.



A Look at The Evergreen State College



JOE OLANDER
President

RITA GRACE
Administrative Assistant to the President

STAN MARSHBURN
Assistant to the President

MARGARITA MENDOZA DE SUGIYAMA
Special Assistant to the President (Affirm. Action)

SUE WASHBURN
Vice President for Development and Administrative Services

ALICE PATIENCE
Administrative Secretary

STEVE HUNTER
Director of Institutional Research

PATRICK HILL
Vice President and Provost

KEN WINKLEY
Associate Vice President for Administrative Services

RITA COOPER
Director of Employee Relations

JIM JOHNSON
Acting Director of Computer Services

REBECCA GALLAGHER
Controller

KEN JACOB
Director of Facilities

JIM DUNCAN
Director of General Services

JON COLLIER
College Architect

MARK CLEMENS
Director of Information Services and Publications

JOHN GALLAGHER
Director of Development

LARRY STENBERG
Director of Community and Alumni Relations

RITA POUZIALES
Academic Dean

MIKE BEUG
Academic Dean

Director, Student Advising Center*

JEAN MCGREGOR
Academic Advising

LARRY EICKSTAEDT
Academic Advising

BARBARA COOLEY
Cooperative Ed

STELLA JORDAN
Learning Resource Center

STEVEN KANT
Math Skills Center

*STUDENT ADVISING CENTER: Proposal under study



CLAUDIA BEYER
College
Internal
Auditor
(on leave)



KATHLEEN GARCIA
Budget
Director
(On leave)



KAREN WYNKOOP
Assistant Vice President
for Academic Budgeting
and Financial Planning



KRIS JOHANSSON
Administrative
Assistant



RUSSELL LIDMAN
Director of the
Washington State
Institute for Public Policy



GAIL MARTIN
Vice President
for Student
Affairs



BILL ZAUGG
Administrative
Assistant
for Budget



KATE CROWE
Administrative
Secretary



DAVID MARR
Academic Dean



BARBARA SMITH
Academic Dean



SARAH PEDERSEN
Acting Dean of
Library Services



STONE THOMAS
Dean of
Student
Development



GARY RUSSELL
Campus
Police Chief



JAN LAMBERTZ
Director of
Recreation
and Athletics



JEANNIE CHANDLER
Director
of Housing



ARNALDO RODRIGUEZ
Dean of
Enrollment
Services



CHER STUEWE-PORTNEFF
Prior Learning

FACULTY



KATHY YBARRA
Administrative
Coordinator of
Student Activities



JOYCE WESTON
Director of
Career
Development



SHARY SMITH
Director of
Counseling and
Health Services



TOMAS YBARRA
Director of
Upward Bound



SHERRY WARREN
Coordinator of
KEY-Special
Services



APRIL WEST-BAKER
Coordinator of
First Peoples
Coalition



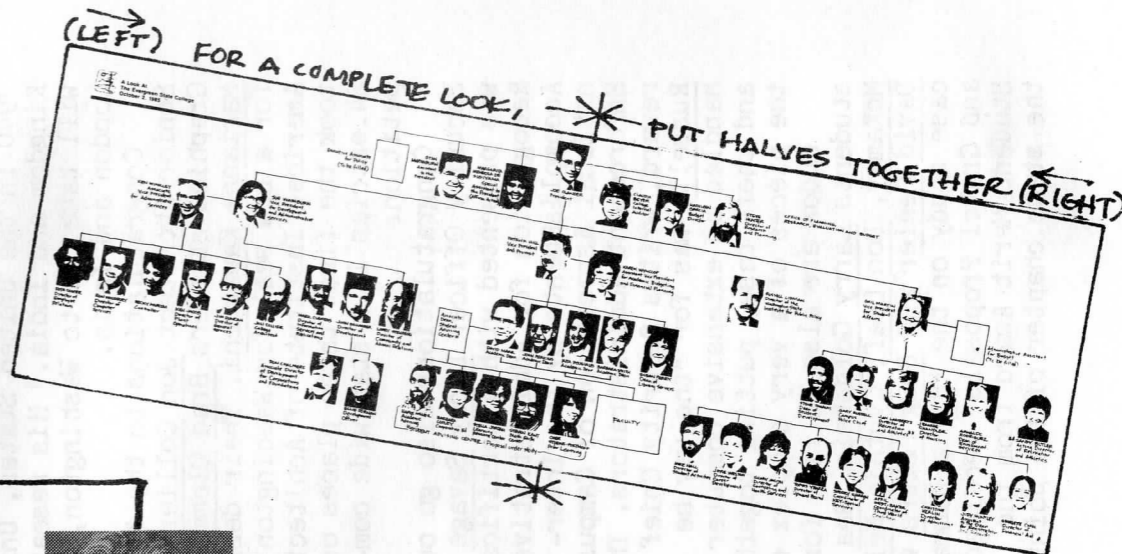
CHRISTINE KERLIN
Director
of Admissions



JUDY HUNTLEY
Assistant
to the Dean
for Registration
and Records



GEORGETTE CHUN
Director of
Financial Aid



Evergreeners in the News

What We Did This Summer— And More

For the folks on the home front, it was a quiet but busy summer. The Facilities staff undertook 168 projects including: reroofing Labs I and II, the Communications Building, the Central Utility Plant and the Maintenance Shop; installing new fire detectors, alarms and annunciators in all buildings; fixing the chinks in the Campus Plaza bricks; remodeling the Ceramics Shop--Evergreen's first building--into the new Childcare Center; installing new, energy-conserving lights; and painting, painting, painting.

Meanwhile, the Office of Cooperative Education had their busiest summer in 10 years, coordinating 122 student internships. Conference Services welcomed over 5,000 visitors, attending 70 conferences, to campus this summer. Groups included the Tacoma Youth Symphony, the Northwest Boychoir, Elderhostel and the International Permaculture Institute. The Upward Bound Program celebrated its ninth year at Evergreen with 47 minority high school students attending from the Tacoma area.

Affirmative Action Officer Margarita Mendoza de Sugiyama has been selected by the national YWCA to be a member of a 16-woman delegation to South Africa. During their three-week stay this November, the American women will work with South African women of all races to develop educational strategies to inform Americans about the effects of apartheid on women and children.

Evergreen Faculty Member John Perkins is also a world traveler this year. He received a grant from the Smithsonian Institute to conduct a study entitled "Four Blades of Grass: A Comparative History of the Crop Production Sciences since 1940 in the United States, United Kingdom and India." His research will take him to Washington, D.C., London and India.

Congratulations to the team of Senior Architect Jon Collier and Graphics staffers Brad Clemmons and Marianne Kawaguchi. Their designs for a new seal for Washington's American Institute of Architects took the first three places out of 24 entries in a statewide competition.

Congratulations also go out to Security Officer Larry Savage who was presented with a Certificate of Recognition for Administrative Accomplishments by the International Association of Campus Law Enforcement Administrators. The reward, writes Security Chief Gary Russell, was for "the way he handled an extensive computer fraud and theft case, putting together the pieces of a very complex case."

Kudos are also in line for MES students Larry Goldstein, Bea McKamey, Don Leaf, Cynthia Nelson, David Peeler and Doug Peters whose case study on the "Hamma Hamma Sand and Gravel Proposals" received a Student Merit Award from the the state chapter of the Joint

American Planning Association. The association also presented a Special Recognition Award to "Sustainable Community Design" students Erica Guttman, Linda Phillips, Robert Waldron and Rhys Allen Webb for their "Madison Scenic Park" study, conducted under the direction of Faculty Member Rob Cole.

Junior Shelley Stiltner is a recipient of the \$500 Agnes Vaughn Memorial Scholarship. Stiltner was one of 17 students vying for the honor which is bestowed on an undergraduate woman working in the field of transportation.

"New Metal Sculpture" by Faculty Member Jean Mandeberg is on exhibit at the Marianne Partlow Gallery in downtown Olympia from through October 8.

Congratulations to the Trujillo family on their latest addition: Rosa Alicia, born on August 15. Communications Building Manager Ed Trujillo reports that her first words on arrival were "When's rehearsal, Dad?"

Back to School: three Greeners enjoyed high school reunions (sort of). Media Technician Allie Hinkle, voted "most carefree" by her classmates in Seoul, Korea, enjoyed her 15-year reunion in Colorado, while Bookstore Manager Denis Snyder "had a blast" at number 20 with his buddies in Bainbridge. Information Specialist Keith Eisner reports that he was unable to attend his 20-year reunion in

Traverse City, Michigan. However, an old friend, posing as Eisner, went and had a great time.

Hello and Goodbye. We welcome the following new Greeners: Steve Willis, librarian; Ann Shepard, library technician; Beth Hartmann, accounting assistant supervisor; Dan Clarke, custodian; Patty Marks, academics secretary; Julian "Pete" Pietras, coordinator of Academic Computing; Glenda Pegrum, program assistant for Registration and Records; Judy McKenzie, program assistant for Exhibit Touring Services; Gary Arvan, Instructional Technician; Kitty Parker, Academic Advising Program Assistant, and Photographer Steve Davis.

We say goodbye and thank you to Custodian John Johnson, Office Assistant Donna Bunten, Program Assistant Barbara Watrous, Photographer Margaret Stratton and Program Assistant Betty Lochner. The Newsletter also says "see you later" to Executive Associate for Policy Jack Daray who's taken a one-year leave-of-absence to serve as associate executive director for the Higher Education Coordinating Board; Internal Auditor Claudia Beyer, who's also taken a leave-of-absence, and Photo Services staffer Tracy Hamby who's taking a year off to photograph the world.

If we've missed your arrival or departure, award or feat, please let us know. Send to: Newsletter, LIB 3122, or call ext. 6128. Thanks!

IT WASN'T ALL HARD WORK AND NO PLAY for Greeners this summer. Ranging in experience from near-pro to first-time-ever, 28 staff and faculty golf enthusiasts turned out for the first annual GeeFour (Greater Geoduck Golf Gathering) at Scott Lake Golf Course in July. Low cards for men and women for the nine-hole affair were Accounting Manager Ron Stead with a 41 and Lela Bauman (mother of Accounting Assistant Supervisor Debbie Davies) with a 42. "Big Stick" Larry Stenberg (below) won the GeeFour prize for Closest to the Pin when his tee shot came within 24 feet of the flag, but he couldn't have done it without the steady support and comprehensive dental coverage of "Ironman" Doug Scrima.



Photo by Brad Clemmons



Happenings

NOTE: The Happenings has been included in this special edition of the Newsletter. Beginning next week, the Happenings will come out every Friday and detail upcoming events on campus throughout the school year, while the Newsletter will return to its regular format and appear every other Friday. Deadline for submission to the Happenings is Tuesday at noon. Please contact the Information Center in the CAB MALL or Pat Barte, LIB 3122, ext. 6128 with all Happenings submissions.

SPECIAL ANNOUNCEMENTS & UPCOMING EVENTS

>>>The President's STUDENT CONVOCATION is scheduled for Wednesday, September 24, from 10:30-noon, in the Library Lobby. President Olander, Provost Patrick Hill, and Vice Presidents Gail Martin and Sue Washburn will discuss the upcoming year. Two important items of discussion will be Evergreen's budget requests and the college's Strategic Plan.

>>>Orientation DANCE, Saturday, September 20, 9 p.m.-midnight, in LIB 4300. Tropical Rainstorm is the featured band and admission is \$1.00.

>>>Tickets are on sale now for the Evergreen College Community Organization's (ECCO) fourth annual "Celebration of the Evergreen State," a wine and seafood GALA EXTRAORDINAIRE! Fresh crab, salmon, clam and oysters and the best Washington wines will be the featured fare on Sunday, October 19, 4-6 p.m., in the Library Lobby. Admission is \$10 and tickets must be purchased by Friday, October 10. Tickets are available from Yenny's Music, the Evergreen Bookstore, the Marianne Partlow Gallery, an ECCO Board member or from Information Services in LIB 3122, ext. 6128.

>>>S&A BOARD POSITIONS are now open. If you're a student or a faculty member interested in evaluating existing and proposed programs and making funding recommendations to the administration, contact the Student Activities Office, CAB 305, ext. 6220.

>>>13 JOBS are also available through the S&A Office. Positions as student coordinators, office aide and recorder are open. Applications are being accepted at CAB 305. Position descriptions are posted at the Financial Aid Office in LIB 1218. Call ext. 6220 for complete details.

>>>Make plans now to attend the seventh annual HARVEST FAIR on Sunday, September 28, from 11 a.m.-6 p.m. on the beautiful 13-acre Organic Farm. Entertainment, delicious foods, children's activities, arts and crafts, farm tours and films, and a Pie Baking contest are all on tap. Admission: FREE! Park in Lot B and take the free shuttle bus to the farm or walk the gentle woodland trail from Lot B to the farm. Rain or shine!

>>>PIES, PIES, PIES are still needed for the Harvest Fair's pie contest. Don't be shy. Bake up your best and enter the contest. Prizes include dinners at some of Olympia's finest eateries, a half cord of firewood, a massage and more. Entry is free. Call Susan Moser at ext. 6160 for complete details.

>>>The Evergreen Foundation Board of Governors has allocated \$5,000 this year for grants to students and faculty members for specific projects and activities. Applications must be in writing and delivered to the Development Office, LIB 3114, ext. 6565, by October 9, January 9 and April 1. Applications arriving after these dates will be held until the following quarter. Call Development for complete details.

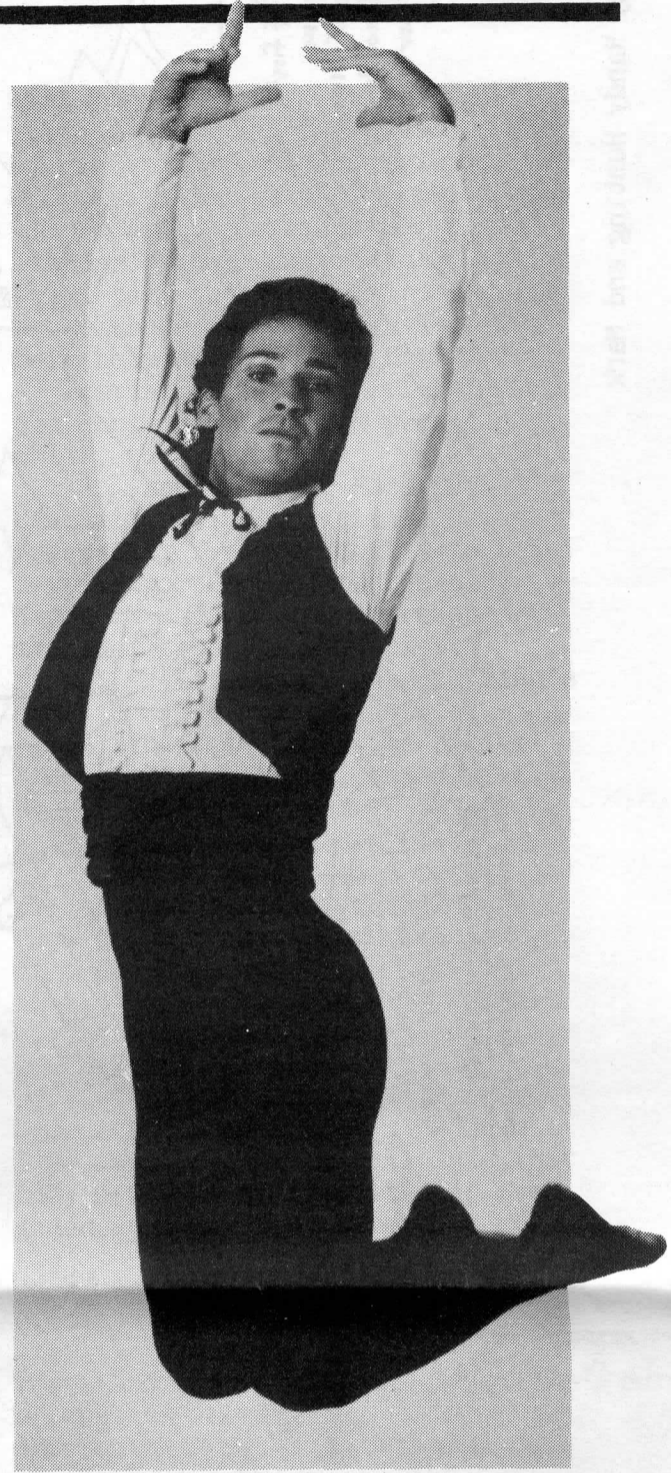
>>>Washington state has established a PRODUCTIVITY BOARD to encourage state employees to contribute to the efficient operations of state government. You may earn a percentage of the documented savings by making a proposal to your unit head. Contact Employee Relations, LIB 3238, ext. 6361 for complete details.

>>>Staff Development Funds. Employee Relations has allocated \$800 per quarter for individual staff development proposals. Contact Employee Relations, ext. 6361 for complete details on deadlines and procedures.

>>>Over 90 LEISURE EDUCATION workshops in everything from Mountain Bike Tours and Wine Making to Proud Body Aerobics and Storytelling are being offered this quarter. Registration takes place in CRC 302 through Friday, October 3, from 8 a.m.-5 p.m. Four evening registrations are offered Monday through Thursday, September 29-October 2, from 5 to 8 p.m. A special registration is set for Saturday, September 27, from noon-3 p.m., at the South Sound Center (Sears entrance). Classes begin the week of September 29-October 3. Call ext. 6530 for complete details.

>>>The monthly PIECE OF MY MIND series begins on Wednesday, October 1, with a lecture by Saint Martin's Vice President Dr. Richard Langill on "South Africa: Is Peace Possible?" The noontime event takes place at the First United Methodist Church on 1224 East Legion Way. FREE. Call ext. 6128 for a complete 1986-87 schedule of talks on subjects that include Star Wars research, law and privacy, youth and age, corrections and more.

>>>Copies of the STRATEGIC PLAN are available at the Library Circulation Desk, the Information Center and the Student Communications Center in LIB 3231. Contact Steve Hunter in LIB 3103, ext. 6363, for complete details.



EVERGREEN EXPRESSIONS CELEBRATES "The Spirit of Dance" during its 1986-87 season with a stunning schedule. "Joint Forces," a dynamic Contact Improvisation troupe from Oregon kicks off the series on Saturday, October 11, at 8 p.m. in the Experimental Theatre. The Keith Martin Ballet (member pictured above), a highly-acclaimed Northwest company, performs on Saturday, October 25, at 8 p.m. in the Experimental Theatre. The Cornish Jazz Faculty Ensemble, eight of the finest jazz musicians west of the Rockies, play original and improvisational jazz at its best on Saturday, November 15, at 8 p.m. in the Recital Hall. Ensemble members have played with such greats as Duke Ellington, Herbie Hancock, Santana and Mose Allison.

Tickets for all Fall Expressions events are \$6 general, \$4 students, senior citizens and Evergreen Alumni Association members (with cards.) Reservations, which are strongly recommended, can be made by calling 866-6833.

Next Newsletter: Friday , October 3

All photos by Photo Services unless noted.

New Smoking Policy Clearing the Air

"Nearly everyone has been supportive of the new Smoking Policy," says Larry Stenberg, director of Community and Alumni Relations. Stenberg, who chaired the DFF that drew up the policy last spring, has also been in charge of its implementation over the summer.

"The only thing left to do," he says, "is to supply the main entrances of all campus buildings with ashtray urns and install permanent signage." Also, the smoking lounges in the first floor lobby of the Library and the third floor balcony of the CAB will be carpeted sometime this fall.

"While the reason for creating the policy was to protect people's health," comments Stenberg, "we also thought it appropriate to make the selected smoking areas as comfortable as possible."

With implementation nearly done, any complaints about smoking should first be addressed to the offending party and, if there is further complaint, to the person supervising the area in question.

"We're all responsible for enforcing the policy," Stenberg says. "It's only as effective as people are willing to cooperate and support it. I've got faith it can work at Evergreen."

Smoking also permitted in enclosed private offices.

