

Reflections on Becoming a Greener: A Mother and Daughter's Views

Editor's Note:

Becoming a Greener takes more than walking onto campus or attending a seminar. It takes time, energy, thought, persistence and patience, as discovered this fall by two new Evergreen students. We asked Kathy and Camey Combs, the first mother-daughter duo to win full tuition scholarships to the college from the Evergreen Foundation, to keep a journal of their first three weeks on campus to share with readers of this **Review**. Their candid reports offer keen insight into life in Geoduck Country, circa fall, 1982.



Most often when mother and daughter meet on campus, it's directly related to food and its consumption. Here the two supplement their lunches from the Deli.

"Who Says Computers Aren't Human?"

By Kathy Combs, "reentry" student transfer from Olympia Technical Community College

The following documentation represents only a skeleton of the data that has bombarded this new Evergreen student. Already, time has altered the initial perspective presented here:

September 15. The best test of a student's academic determination is the registration process. My registration, which began in the spring of 1982, culminated in the abrupt realization two weeks before classes were to resume that I was not completely registered. There were still misunderstandings that needed to be interpreted and acted upon. Thus, working through the unfamiliar registration structure at Evergreen constituted the beginning of my education as a Geoduck.

September 17. I neglected to consult the manual, "How to Act When Your Firstborn Goes to College," before Camey loaded up her car and zoomed off to confront campus living. It is doubtful I will find resources that will cover how mom is supposed to respond when she joins her daughter on that same campus.

September 27. Finally, "this horse is out of the gate" and headed down the track. All the months of paperwork are over; it is time to allay the pent-up apprehensions. I'm off to my first MPI (Management and the Public Interest coordinated studies program) organizational meeting.

Later. That session certainly did a lot to accelerate my momentum. The program coordinators patiently answered questions and attempted to condense Evergreen's educational philosophy. As the course requirements were revealed, audible gulps were heard. Those of us who didn't gulp were probably numb. Tonight I will read!

September 28. Alas, I am the proud possessor of a computer identification

number and time on a faceless monster called "PLATO."

The orientation session for the BASIC programming course revealed the emphasis our society is now placing on computer technology. The course enrollment was satisfied early and many hopefuls were placed on a lengthy waiting list. Many waited with bated breath as the instructor began calling names on that waiting list. While 40 were admitted, approximately 40 left disappointed. "Many were called, few were chosen."

While computers may be the wave of the future for this aspiring executive, computer knowledge could serve an immediate purpose. I expect to be able to understand the language of the younger generation who are already termed "computer whiz kids." The possibilities for idle chit chat in social settings could be indispensable and help fill in those awkward gaps in conversation.

September 29. PLATO and I established our "relationship" without a great deal of trauma. I made some measurable progress for which I was rewarded with neat, uniform check marks. The first session served to acquaint me with resource material and the projected flow of work. A personal achievement schedule is now possible and utilization of computer time will be more beneficial.

September 30. In retrospect my first full day of classes was exhilarating as well as overwhelming.

I was delighted to be privy to the mysterious "seminar," and discovered the techniques and processes we would be using are not new to me, but have been disguised as other forms of communication.

Our group numbered approximately 30 and this factor would necessitate special accommodations and considerations from the members of the seminar

group. The size of this group was my first disappointment in the Evergreen system. I had always heard that offering small seminar groups was one of the factors that made Evergreen education unique.

The lecture courses (Human Resource Development and Organizational Psychology) were inviting because they also presented opportunities to work in small group settings toward a common goal.

As a result of the day's activities, I became a member of three auxiliary study groups.

On the observational side: Students at Evergreen exhibit an unusual degree of affection and concern for each other that can be viewed around the campus as they



Going from wife and mother to being a student of the computer gets Kathy Combs' morning off to a challenging, sometimes frustrating beginning.

greet each other upon their return to campus this fall. That comradeship is stimulating to me, even as a passerby, and restores a sense of peace and purpose to my existence.

October 2. My first weekend after beginning classes was spent analyzing my workload and course requirements. Broken down into palatable chunks, all

From One Home to Another

By Camey Combs, Tumwater High School graduate, Class of '82

It seems like no matter how much you look forward to something happening, it's never quite the way you imagined it. That's the way I finally felt when I moved out of the "nest" to take up residence in dorm D.

I spent days in preparation for this event, making an inventory of what I had to take with me in order to survive. In other words, I had to make sure my stereo came with me but the dish soap was less important.

Luckily I only had 15 minutes of travel between my new home and that of my family, so that I didn't have to take only the bare essentials. I could always go back for more.

dramatic affairs. It was then that I discovered that I had the blessing of being a ham in a program of hams.

The structure of Form and Content, like the other basic programs, is well designed for the beginning college student. Each week we read a book about a twentieth century artist and write a short response paper on the main theme of the work as we see it. These main themes become the topic of our seminars. We also have workshops to attend each Thursday morning on either music, dance or art. I'm in music seminar. I figured since I wanna be a musician, I'd better learn something more about music fundamentals.

Worked into Form and Content is an opportunity to take a four credit-hour module (course). Most of my fellow students are in modules that are related to art in some way. If there's a link between my choice and art, it's obscure. I'm taking Spanish. The idea in that class is to talk in Spanish the whole time. The method works. I can see the improvement week by week.

In order to add some excitement to my life (I guess), I decided to also take on the responsibility of reporting sports for the Cooper Point Journal. Actually it's not so much a responsibility as something I enjoy. I've always like journalism and wrote for my high school newspaper two years.

All this combined to take the edge off my mental stresslessness. But I couldn't figure it out; all I knew was that I was growing more restless by the day. Finally the missing factor revealed itself to me—I wasn't doing anything athletic.

This came to my attention when I began watching Geoduck soccer games. One of my closest friends here at Evergreen is Tim Lewis,

I remember that week before classes started out as a kind of acute agony. I was lonely, bored, and I felt out of place. In short, I felt like a freshman.

The week of September 27 cured any boredom I had. The orientation arranged for the Form and Content (coordinated studies) program gave me the chance to make friends and get to know the campus better. It was a scavenger hunt. After our groups gathered the required information, we met at the Organic Farmhouse to present our findings. These presentations were mostly

Continued on page 9

Continued on next page

From One Home to Another
continued from page 1

whom I've known for almost five years. Since Tim is a member of the men's soccer team I naturally went to the home games. Pretty soon I was going to all the men's and women's home games. I sat there on the bench watching—something I actually hate to do. I'd rather be doing than observing. So I decided to join the team. Then, I just had to learn how to play. I'd like to thank the team for making me feel



human no matter how inept I am with a soccer ball.

That brings up a point about the importance of sports at Evergreen. Not only do they give the outer community a way of relating to Evergreen, but they help build a sense of community on campus. I mean, no matter what differences there may be between the people watching an event, whether they're in different programs or have differing political views, they can still sit together and cheer on their team. They have a common ground.

Well, once I had my intellectual and physical self occupied, I could concentrate on my social life. Not that I have a lot of extra time but when I do there's always something happening. Films, presentations, art in the galleries, music and conversation in The Corner or just playing cards with friends.



All of this—our brand of education, athletics, socializing—adds to the terrific atmosphere we have here. Think about it. You can start talking to someone you don't know, and he or she is not going to look at you like you're excessively weird. They may think it, but most Greeners are too polite or mellow to show it.

All in all, I'm beginning to feel more like this is home. A rather large one, with a large backyard, and a swimming pool and lots of neighbors. Some things are hard to get used to, like cooking for myself, washing for myself and sometimes waiting a few minutes for hot water, but I'm getting used to it. Luckily for me, I live close by and can have Sunday dinner with my family and get a healthy dose of "home." Besides, I usually get the leftovers.

Ten Years Later: Some Positive Feedback from the "Mud Days"

Editor's note: The following story is quoted from the keynote speech given by **Dr. Gail Martin** at the 1982 Alumni Reunion on October 9. Dr. Martin, director of Career Planning and Placement at Evergreen, based her speech on interviews she conducted with 191 Evergreen pioneers—students who graduated in the Classes of 1971 through 1975 and who took the time to reflect on the value of their Evergreen education a decade after the "Mud Days."

"Today I want to talk to you about yourselves, as pioneers in alternative education at Evergreen. I do not intend to diminish your sense of uniqueness, but to add to that sense of uniqueness, the sense of belonging to a small, but nevertheless exciting, tradition in higher education—the tradition of the experimental liberal arts college.

The substance of the interviews deals with your reflections about your work and your retrospective evaluation of Evergreen. First, to the subject of **satisfactory work**:

70 percent of you reported finding satisfactory work at some point within one year of graduation. An additional **25 percent** reported that it took two years or more to find satisfactory work, and **5 percent** reported you still have not found satisfactory work.

It's particularly important that **95 percent** of you are satisfied with your work even though entry was not easy. This high level of satisfaction is quite unusual given the scarcity of jobs and the decreased responsibility attached to entry-level positions for bachelor's degree holders.

Nationally, liberal arts graduates generally find some kind of work within six months of graduation—and you are no exception—but satisfying work is more elusive, typically taking 12-18 months to find.

Hiding behind the satisfaction with work you report are some interesting patterns concerning **job changes**:

16 percent of you changed jobs only once or not at all, **36 percent** of you changed jobs two or three times, and **48 percent** of you changed jobs four times or more.

Record holder for largest number of job changes since graduation is one alum who's held 14 different jobs since graduating in 1973.

Among other things, this pattern means that job satisfaction for Evergreen pioneers is related to job change and exploration until a certain quality of work is achieved.

With regard to **career changes**, however, Evergreen pioneers reflect considerably more stability because **62 percent** of you have had no career change whatsoever. You enter a field and change jobs within that field, but do not switch careers.

I suspect that 10, 15, and 20 years from now that pattern will shift dramatically, showing a far greater incidence of career change. After all, most of you are still in the beginning part of your working lives.

What is it that makes you say your work is satisfying? **Ninety-three percent** of you indicated high, or at least moderate, satisfaction with the level of responsibility in your job; and **91 percent** reported high or moderate satisfaction with the compatibility of your work with your values and lifestyle.

Apparently, your work satisfaction is derived from the responsibility you have earned and your sense that you are doing work that is appropriate to the way you live your life.

I interpret this information generally as proof that most Evergreen pioneers took the values they expressed as undergraduates into the so-called "real world" and made them manifest there as well. Two of these values are the seeking, securing, and exercising of responsibility; and the insistence on non-alienating work, work that enhances one's overall quality of life.

When you were undergraduates, some of us would worry privately that you might be too picky about your work and end up severely disillusioned after graduation. Apparently that was not the case for most of

you, even though it was a factor for some at various points after graduation.

Finally, how does Evergreen look to you after the passage of time? **Seventy-seven percent** of you say that, overall, Evergreen looks good, **19 percent** say you now think of it as a mixed experience, and **four percent** now see it as a bad experience.

These evaluations, however, should be seen in the context of what you wanted to get out of Evergreen while you were here. As a group, your top three goals for undergraduate education were to: (1) enhance your general intellectual and social development, (2) attend a college with an alternative approach to education, and (3) gain academic expertise in an interest area.

When we asked how well Evergreen had helped you attain these goals, **93 percent** of you said Evergreen adequately or exceptionally helped enhance your general

intellectual and social development, **95 percent** said you experienced Evergreen as the kind of alternative education you were seeking, and **94 percent** of you felt you achieved adequate or better knowledge in an academic interest area.

You Evergreen pioneers have had a different, a tense and intense, undergraduate education; yet many of you report getting married, having children, and buying or building homes. Several of you are still climbing mountains and backpacking all over the world; but **86 percent** of you are satisfied with your work environment, **83 percent** are satisfied with the way your Evergreen background relates to your current job, and **82 percent** of you are even satisfied with your salaries.

The research says you were a different kind of student, seeking a different kind of education. In general, your lives sound challenging and full.

A "Mud Days" Vet Remembers:

A 1975 grad now in medical school:

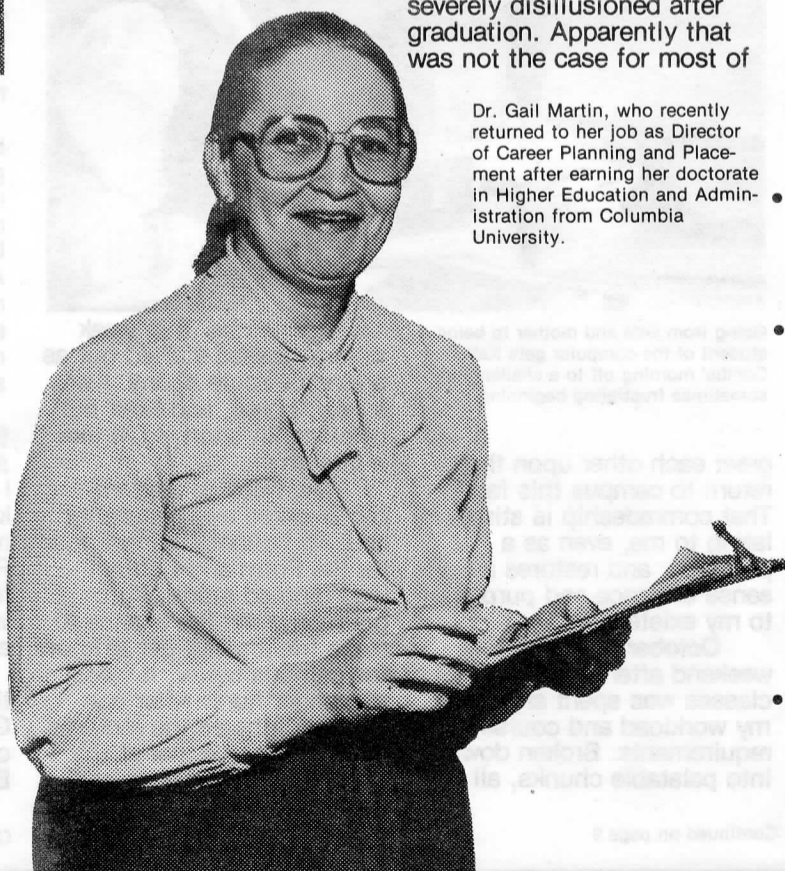
"I was part of the group who began as first year students in 1971 and went straight through to graduation in 1975. We had a unique experience, much of which concerned building and making TESC what it is. By 1975, TESC academically was a very strong school and still is. In that sense, today's students are much better off than we were. But they missed out on the incredible adventure that was Evergreen in 1971 to 1975. That could only happen once... We are probably the world's most

insufferable alumni with our stories of what it was like in the "mud days." I felt and feel that there is a very real need for alternative schools like Evergreen. There is a significant percentage of students who derive a very real benefit from a participatory, self-disciplined, self-managed education. And all those benefits are passed on to society. I am very proud of, and grateful to, Washington State for recognizing and filling that need for its students and its citizens."

And Now the Latest Word...

Three of Evergreen's younger classes—1979, 1980 and 1981—responded to the Office of Career Planning and Placement's annual college survey recently, and the results are now in. No longer wet behind the ears, their lives after Evergreen stack up this way:

- The Class of 1981 reports a 93 percent placement rate in spite of a national decline of 18 percent in job offers made to bachelor's degree holders.
- Seventy-six percent of 1981 graduates who answered the survey are employed at a professional level, i.e. in jobs which require a bachelor's degree. This compares with 63 percent for the Class of 1980 and 65 percent for the Class of 1979. The 1981 figure is especially impressive when compared to the national average of 52 percent reported in 1977, the last year figures were available.
- Of the 163 1981 graduates who reported, 83 percent are employed. Seven percent are accepted or enrolled at graduate schools, three percent are pursuing other choices, and seven percent are still seeking employment.
- Despite the Class of 1981's high placement rate, fewer of them have turned internships into postgraduate employment because of the economy, and fewer are finding work in grant-funded jobs, which reflects the decline in federal, state, and local grant support.
- Fifteen percent of 1981 graduates are working in counseling and social services, compared to 11 percent in the Classes of 1980 and 1979.
- Biological and environmental science careers attracted 18 percent of the Class of 1981, and education drew an additional nine percent.
- Other careers in which 1981 graduates are employed include: business management, eight percent; public administration, seven percent; communications, six percent.
- More than 30 percent of the Classes of 1979, 1980 and 1981 are volunteers or active members of a wide variety of community organizations, including local fire departments, refugee centers, crisis clinics and service clubs.



Dr. Gail Martin, who recently returned to her job as Director of Career Planning and Placement after earning her doctorate in Higher Education and Administration from Columbia University.

Sports Update: Soccer, Sailing And More Soccer



The men's and women's soccer teams booted their way into the fourth season this fall as the coed swimmers begin splashing through practices in the campus pool and the tennis squad eyed plans to begin indoor practices the first of January.

Sports Information Director Sandy Butler says the Evergreen women's soccer team was "finding the conference competition as highly competitive as they anticipated." By mid-season, the

women's record showed three wins and eight losses, including defeats from the University of Washington Huskies and the University of Oregon Ducks.

The stalwart, bivalved women experimented with a revised defense in their most recent game against Pacific Lutheran University and the results pleased veteran coach Jacques Zimicki.

"Against PLU our first half was very successful, thanks to our new defense.

I'm really hopeful this strategy will contribute to a successful second half of our season," he said.

Men's soccer coach Willie Lippmann reported that by mid-season his squad had been making "steady improvements each game. They should really be proud of their many accomplishments," he added, despite a mid-point record of one win, nine losses and three ties.

Prospects for the Geoduck sailors were also look-

ing good as this **Review** went to press. Sailing coach Lou Powers was pleased with his home team's fourth place overall showing at the University of Washington's kick-off regatta in early fall and felt it was "the best showing we've ever made in competitive sailing at Evergreen."

His crew of intrepid sailors were eagerly awaiting the Evergreen Invitation Regatta, planned for early November at the Fiddlehead Marina bordering the Port of

Olympia.

In other intercollegiate activities, swim coach Robbie Johnson and his coed team practicing twice a week in the campus pool, preparing for their first competition in mid-November—a pentathlon meet in which each swimmer will be "encouraged" to compete in five events.

For details on any of Evergreen's sports activities, check with Butler at the Recreation Center, 866-6530 weekdays.

In the News...



George Mante of Aberdeen was named to Evergreen's Board of Trustees in October.

- **George Mante**, an Aberdeen resident who serves as manager of the Olympia Office Services branch of the Department of Employment Security's Administrative Services Division, was named to Evergreen's Board of Trustees in October. Mante, 35, was named to the board by Governor John Spellman to replace Aberdeen trustee Wes Berglund. A former eighth grade school teacher, Mante has worked for Employment Security since 1975, serving in a variety of posts. He is also a former Aberdeen city council president and finance/public works councilman. He holds a bachelors degree in political science from Willamette University and a masters degree in public administration from Seattle University.

Ruth Yanatta Goldway, who lectured on campus this fall about progressive politics in local government.



- Fall Quarter **enrollment** figures show 2611 students registered compared to 2766 last fall. The decline of 155 students is paralleled at four of the state's five universities, each of which has also suffered enrollment drops that college officials attribute to three legislative budget cuts in the past year, increased tuition costs, delayed receipt of federal financial aid information and tough economic times. Evergreen's original 1982-83 budget, passed in the spring of 1981, funded a total full-time equivalent enrollment of 2555. Following the latest round of budget reductions, Evergreen's budget for the year was cut a total of 15 percent, which funds a full-time equivalent enrollment of only 2300 for 1982-83.

- A renewed search for a new Academic **vice president** and provost was launched from the campus in September. The nationwide effort seeks to find a replacement for Byron Youtz, one of Evergreen's founding faculty members who has served as provost for the past four years. Youtz, a physicist, plans to resume full-time teaching, which he has continued on a part-time basis throughout his administrative tenure.

- Faculty Member **Maxine Mimms** was honored by the City of Tacoma September 19 for her work in education and in that community. More than 200 persons gathered to celebrate Mimms' 32 years in education and her efforts at founding Evergreen's Tacoma outreach campus, which she began in her home more than eight years ago. President Dan Evans joined in the celebration, noting that Maxine "has made people feel they are worth something and can accomplish something in their lives." He told Mimms, "You touch so many people and in doing so, make this a better place to live." Accolades were also delivered by representatives of the Tacoma Urban League, the Black Women's Caucus, Tacoma School District, Black Alliance Through Unity of Pacific Lutheran University and others.

- **Ruth Yannatta Goldway**, the mayor of Santa Monica whose progressive administration has attracted national attention in the past year, spoke to students, faculty and interested citizens during a week-long visit the end of October. She concentrated her presentations on "local government as a focus for progressive politics," a topic with which she's become most familiar since winning the mayorship in April of 1981. That's when what Newsweek Magazine calls "a group of liberal political activists... wrestled control of the city government and transformed the beachfront community of 88,000 into a laboratory for radical social reform." Her visit was sponsored by the Washington Mutual Savings Bank Foundation as part of a special grant to Evergreen's masters degree program in public administration.

Jerrold Footlick, an award-winning journalist who currently serves as a senior editor of Newsweek magazine, visited campus November 1-5 as a distinguished fellow in residence in a program funded by the Woodrow Wilson National Fellowship Foundation. Footlick shared his views on his profession and on perceived trends in higher education in a number of small group meetings with students and faculty.

Mary Bitterman, director of the Hawaii State Department of Regulatory Agencies, is scheduled to visit campus November 16-18. Bitterman, who has served as director of the Voice of America and executive director and general manager of the Hawaii Public Broadcasting Authority, also brings with her experience as project manager of the Hawaii Environmental Simulation Laboratory at the University of Hawaii. Her appearance is also sponsored by the Washington Mutual Savings Bank Foundation, and will include presentations to both students, faculty and local citizens.



Great Colleges "Stay in Touch," Says McCann

"The thing which distinguishes a great college from one that is simply an educational factory turning out credit hours is its 'sense of history, its ability to stay in touch with its past,' founding president Charles J. McCann told alums who gathered to celebrate the tenth reunion of the Class of 1982 last month.

"If you walk across college campuses throughout the country, you very soon will feel a sense of which of those schools are the great ones," he said. "Part of that will come from an electricity that's generated when a lot is getting done at those institutions, but that special sense almost never happens unless the college has a strong tie with its past."

He urged Evergreen alums to make sure "you provide us with that close tie with our past."

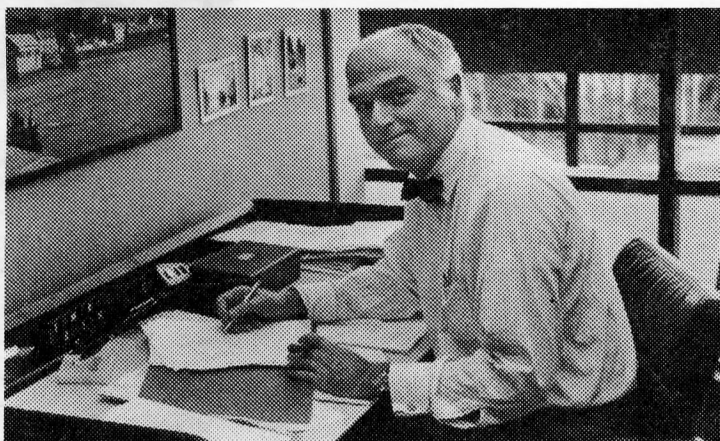
"When you were here, you were doing all that you could for Evergreen and for yourselves. Now those efforts are a part of the past of this

college," he said. "Those students who are now attending are also trying to do all that they can for their own future and for the future of the college. That layer, too, will become a part of our past. And, each of these layers will enable us to build for a strong future—to achieve the greatness we're already on the way toward gaining."

The founding president pointed out that "colleges don't keep in touch with alums by accident. A deliberate effort is required from both the college and its graduates."

"You have to encourage us to do that—and you do so by keeping in touch with us, by paying your alumni dues, by keeping us posted on what you're doing."

Once this link with alums is secured, McCann believes the college and its graduates can cooperatively achieve a number of goals—from forming cluster groups throughout the country to "simply keep alums in-



Founding President Charles McCann obviously enjoys his tenure as an Evergreen faculty member.

formed," to organizing alumni admissions teams, forming networks to develop internship placements for current students, contributing to the Annual Fund, and encouraging legislative support for Evergreen projects.

"It's all possible with the help of those who have been here," he said. "Together your Evergreen past and your link to our present and future comprise a very powerful force—one that can continue shaping this institution as it continues on its very special educational mission."

McCann became Evergreen's first president in 1968, served for nine years,

then became a faculty member in English and management studies. Recalling his own link to Evergreen's past as its founding chief administrator, McCann said in an interview following the Reunion, "It was well worth doing."

"Where else could I have had the chance to do the kinds of things we've done here—with the remarkable collection of people we've had to work with?"

"The experience," he concluded, "offers a feeling of accomplishment probably unmatched by any other. It just feels good."

In Memoriam

Faculty Member Mary Ellen Hillaire, founder of Evergreen's Native American Studies program, died October 21 in Olympia following a long illness.

Hillaire, 55, joined Evergreen's faculty in 1972 to teach sociology, social work and Native American studies. Born to a family of 13 on the Lummi Indian Reservation north of Bellingham, Hillaire was buried in the Lummi Cemetery.

What follows are her words, quoted from a 1972 school publication:



Mary Ellen Hillaire

"The quality of my life in search of meaning and my continuing learning will be directed toward understanding the greater educational problems which require the development and implementation of such objectives as:

To provide for every citizen the information he needs to deal satisfactorily and successfully with the affairs of his life;

To protect the right of each citizen to develop, to express, and to pursue his ideas in freedom;

To facilitate personal and group competencies in the understanding and use of decisions; and

To insure to each the knowledge required to know and exercise his rights in order, justice, peace, and freedom.

My belief is: that man is energy—brought into form by expanding the nature of the human being through the development of the capacity to love, the capacity to learn, and the capacity to live.

There seems to be in all this one other three-in-one situation. As it has been said, "Power corrupts and absolute power corrupts absolutely." So it is with us if we do not realize: Of many things we have come, and into the many-splendored thing called "infinity" we go. We must prepare a citizen to cope with both the outer world and with the greater worlds inside him. Life is a perfectly and sympathetically balanced use of responsibility, recreation, and rest—all equally important in the challenge of becoming.

One cannot divorce what one does from what one believes—so in conclusion, please find in these thoughts, Mary Ellen Hillaire."

Contributions to the Mary Ellen Hillaire Memorial Fund may be made through the Evergreen Foundation toward her favorite campus project, the proposed Native American Longhouse.

Chicano Cultural Expression Enriches Evergreen

Chicano Cultural Expression Evergreen's Galleries Director Sid White is involving the college in "pioneer work." Together with Chicano and Latino scholars, artists and cultural leaders he is exploring the daily lives and cultures of Chicanos in the Northwest.

"I've always been very interested in different cultures and communities," White relates. "Most Americans tend to think of art as being very personalistic and aesthetic. However, the most significant public art has also social and political purposes."

"I decided that I wanted to provide more balance and richness in our exhibits program," he says.

Under White's direction, Evergreen first brought two major exhibits to the campus. In 1979, a show called "One with the Earth" displayed the enormous diversity in American Indian art, from traditional to avant garde. A year later, an exhibit of the public and personal work of artist Isaac Shamsud-Din related the collective experience of black people in Portland who share a common history. "These exhibits had enormous impact on me. They made me want more."

And, do more White did. During the past two years, he presented four more culturally diverse exhibits featuring the work of Native American artists Gail Tremblay and John Hoover, and Chicano artists Daniel Desiga and Rupert Garcia.

This fall he was also able to book the first major joint showing of works by Seattle

painters Alfredo Arreguin and Susan Lytle. Arreguin, whose work can be viewed on the cover of this *Review*, features massive and intricate paintings that reflect his Mexican heritage, and offer a kaleidoscopic vision of shifting layers of patterns and brilliant combinations of color.

Another major Hispanic exhibit opens the first of the year with a month-long showing of works by Latin American women artists, slated for Gallery Four from January 15 through February 13.

Despite the array of exhibits White has been able to schedule at Evergreen, he discovered a "real scarcity of information" about Chicano artists. With help from others at the college, White then applied for and received a \$15,000 planning grant from the National Endowment for the Humanities. That grant, called "Chicano Cultural



Chicano artist Alfredo Arreguin (right), discusses his work with Evergreen faculty scientist Dr. Jacob Romero.

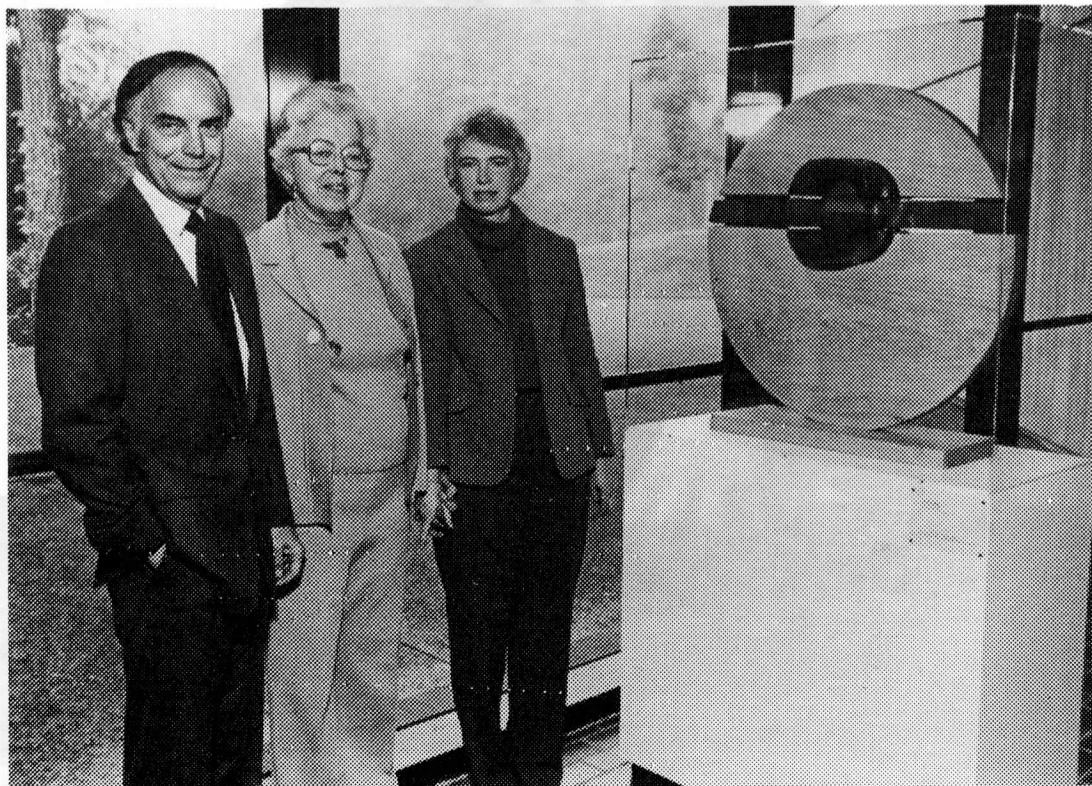
Expression in the Pacific Northwest," provides him support for further field research and literature review about Chicano artists in the region.

"From just a few names our list has grown to over 70 artists. We hope to proceed with touring interpretive exhibits, compilation and distribution of directories and bibliographies, a special issue of "Metamorfosis" (the Northwest Chicano magazine of literature, art and culture) and a major symposium to share information on histori-

cal and contemporary manifestations of Chicano life, art and culture. We hope to identify what is distinctive about Chicano art and culture in this region in comparison to other regions."

With White's guidance, Evergreen will proceed "full steam ahead" with continued program planning and implementation. "We hope to get an NEH implementation grant, but we're determined to move ahead one way or another," he asserts.

"This work is too important. We can't wait!"



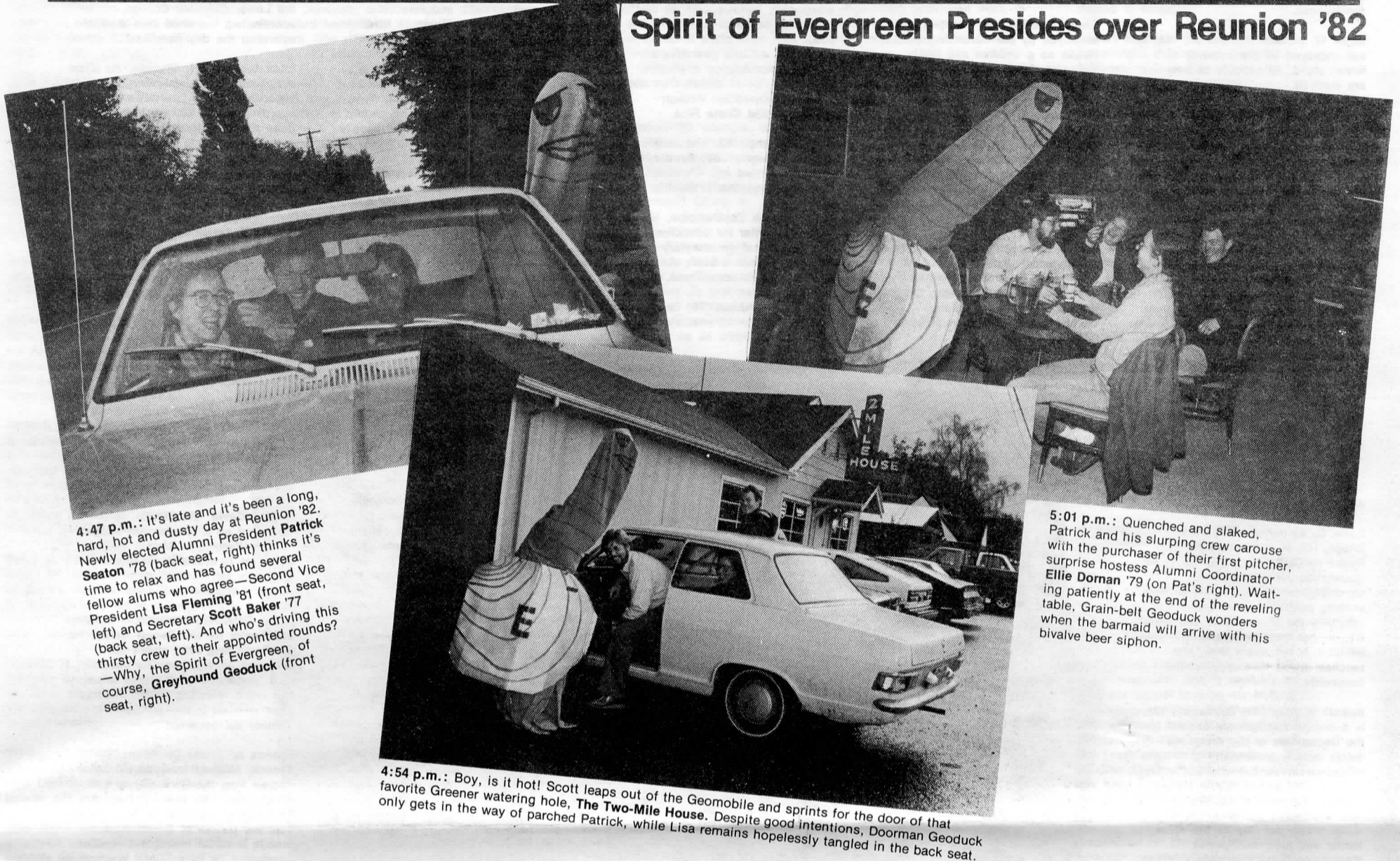
"Disc Forms," a wood sculpture completed by the late Evergreen faculty artist David Gallagher, was presented to the college in ceremonies this fall. President Dan Evans accepted the gift from Mrs. Virginia Saibel (center) in memory of her late husband, Dr. Bernard Saibel, and recognized the contributions of David and his widow, Pat (right), to the college.

AlumNews

The Evergreen State College
Newsletter of the Alumni Association

Volume 5, Number 1
November, 1982

Spirit of Evergreen Presides over Reunion '82



4:47 p.m.: It's late and it's been a long, hard, hot and dusty day at Reunion '82. Newly elected Alumni President **Patrick Seaton** '78 (back seat, right) thinks it's time to relax and has found several fellow alums who agree—Second Vice President **Lisa Fleming** '81 (front seat, left) and Secretary **Scott Baker** '77 (back seat, left). And who's driving this thirsty crew to their appointed rounds? —Why, the Spirit of Evergreen, of course, **Greyhound Geoduck** (front seat, right).

5:01 p.m.: Quenched and slaked, Patrick and his slurping crew carouse with the purchaser of their first pitcher, surprise hostess Alumni Coordinator **Ellie Dornan** '79 (on Pat's right). Waiting patiently at the end of the reveling table, Grain-belt Geoduck wonders when the barmaid will arrive with his bivalve beer siphon.

4:54 p.m.: Boy, is it hot! Scott leaps out of the Geomobile and sprints for the door of that favorite Greener watering hole, **The Two-Mile House**. Despite good intentions, Doorman Geoduck only gets in the way of parched Patrick, while Lisa remains hopelessly tangled in the back seat.

Seaton New Alum President

Patrick Seaton, a vocational rehabilitation counselor in Olympia, has been elected president of the Evergreen Alumni Association. Seaton, a 1978 graduate who also works as an organizational development consultant, was named October 9 to head the 5,500-member alumni group along with four other officers and a total of 16 persons who were elected to new or renewed terms on the Association Board.

Other new Association officers include:

First Vice President **Julie Grant**, a 1979 graduate and two-year board veteran who last year served as both chair of the program committee and first vice president;

Second Vice President **Lisa Fleming**, '76, who was first elected to the board in 1981 and last year served as a member of the Communications Committee, which she will chair this year;

Secretary **Scott Baker**, '77, who has recently returned home from a five-month trip to Fiji, Australia and New Zealand and is now organizing his own business in Olympia; and

Treasurer **Bonnie Marie**, who served as executive secretary of the Association from May of 1978 until last spring when she resigned to move to Portland after working at Evergreen for ten years;

New board members also elected during the Alumni Reunion last month include: **Beverly Hermanson**, **Petrina Walker**, **Tamara Tocher** and **Lynn Garner**, all of Olympia; **Helen Wolff** of LaConner, **Margaret Youtz** and **Rob Fellows** of Seattle; **Bonnie Marie** of Portland; **Greg Logan** of Tacoma, and **Tim Blair** of Kirkland.

Reelected to two-year terms were: **Julie Grant**, **David Rauh**, **Pat Seaton**, **Perry Newell** and **Margo Hertlein** of Olympia and **Doug King** of Vashon Island.

Continuing their two-year terms this year are: **Scott Baker**, **Lisa Fleming**, **Mike Hall**, and **Ralph Smith** of Olympia; **Tim Bessey** of Vancouver, WA; **Keith Goehner** of Seattle, **Anne Pflug** of Bellevue and **George Schroeder** of Sunnyside, WA.

Alums Respond to Call for Assistance

Evergreen's alums have come through again, as evidenced by dozens of responses to the open letter published in the summer issue of the **Newsletter**. Thanks to those responses, the newly organized Alumni Admissions Assistance Program is starting off on a strong, positive note.

Sixty-nine alums from throughout the country have volunteered to participate in this pioneer program to help the College Relations and Admissions Offices bring the Evergreen story to more prospective students.

Among tasks alums will be asked to help with are: serving on committees to coordinate student awareness and recruiting programs; participating in alumni admissions training workshops; contacting students from your home areas who have inquired about attending Evergreen; and serving as local liaisons for Admissions Office-sponsored College Nights and academic fairs.

"Alums are a key part of the college's overall admissions efforts," says **Chuck Fowler**, College Relations director and coordinator of Evergreen's enrollment management program.

"Because of our expanding public relations and more active admissions recruiting programs, more students in Washington—and all over the nation—will become aware of Evergreen's educational opportunities. Once they know about us, we want

to let these prospective students learn more about the positive results of the Evergreen learning experience directly from our graduates," he adds.

To meet the college's concern for maintaining a growing, diverse community of students, Evergreeners have devised a college marketing and public relations plan to achieve specific enrollment, retention and public support goals. The plan and a new group called the Enrollment Coordinating Committee (ECC) were created in 1978 as a result of DTF recommendations that focused on increasing enrollment and improving public understanding of the college.

The ECC, which meets biweekly, consists of representatives from college units most directly responsible for meeting the primary goals. Included are staff from: Admissions, the academic deans, College Relations, Community Relations, Student and Enrollment Services, and Educational Support.

The program devised and largely carried out by ECC representatives and their colleagues "has been quite successful," reports **Fowler**. "Evergreen has experienced three years of general enrollment increases, along with improvements in public perception we've been able to validate through institutional research."

The Alumni Admissions Assistance Program is one new strategy within the

ECC's annual marketing plan. Purpose of the effort is not to create professional admissions counselors among Evergreen alumni, emphasizes Admissions Director **Arnaldo Rodriguez**, who will coordinate the new program with **Ellie Dornan** of the Alumni Office.

"We want to help train selected alums to assist us with our traditional, systematic recruiting activities in certain areas of the state, the region, and the nation," **Rodriguez** explains. The new alumni program will be, he predicts, "a vital, focused resource that will help us reach those students for whom Evergreen is most appropriate."

He and **Fowler** join other college staff in offering thanks to those alums who have so promptly responded to the call with a willingness to help. These committed alums will become the nucleus of subcommittees to be formed after ECC finalizes the Alumni Admissions plan, to be completed by the first of the year.

Then, predict **Fowler**, **Rodriguez** and **Dornan**, "you alums can expect to hear from us with specific tasks."

All three say they'd welcome hearing from other alums willing to help or wishing for more information about the Alumni Admissions Assistance Program. For complete details, please contact **Ellie Dornan** through the Alumni office in Library 3103.

AlumNews is the official publication of The Evergreen State College Alumni Association, issued quarterly in conjunction with the Evergreen **Review**.

Send written submissions, photos, graphics and inquiries to the Editor, **AlumNews**, c/o Alumni Office, The Evergreen State College, Olympia, Washington 98505.

AlumNotes

Jo Ann Abts '80, Vancouver, WA, instructs adult parenting classes at Clark College and supervises parents and children in lab classes. She is also involved in the Health Systems Agency and is vice-president of the Southwest Association for the Education of Young Children. Jo has been a speaker for early childhood conferences.

David M. Adams '79, Seattle, WA, is self-employed as the operator of a flower stand. All aspects of business are involved.

Paula Wisten Aldrich '80, Mossyrock, WA, has been employed during the past year as a substitute teacher in Mossyrock School District.

Monica E. Alexander (MEA) '79, Bellingham, WA, is employed by Washington Literacy as a community resource developer to organize local volunteers into an effective group to promote tutoring of illiterate adults. She has just finished 18 months of community organizing work at Pike Place Market and is now working at the grass roots level again and loving it.

Megan Allen '81, Seattle, is employed by The Mountaineers Book to provide office support. She is involved in the formation of a new Media Watch Chapter of the Armistice Organization and is a weekly volunteer at KNOW public radio. Megan is exploring possible career options through her community and volunteer activities.

Karla C. Alstranner '79, Goldens Bridge, NY, is employed by Fryer Research Center as a nutritionist who researches initial intakes of psychiatric and physically ill patients seeking nutritional care. She is attending the University of Bridgeport, CT, for her masters degree in nutrition. In her spare time, she teaches dance to children in the community.

Robert E. Altig '81, Spanaway, WA, is a civilian management analyst for the Department of the Army. His duties include productivity measurement/service contract writing.

Rudy R. Amesquita '80, Walla Walla, WA, supervises the preparation of 4,000 meals per day as the shift leader and food manager at Washington State Penitentiary. When he isn't cooking, Rudy helps develop chapters for American G.I.

Linda A. Anderson '79, Portland, OR, is an assistant communications manager with Clark County Public Utility District where she writes brochures, news releases, speeches, etc. She also prepares slide shows for citizen presentations.

Joyce Ellen Angell '79, Chevy Chase, MD, has been accepted as a future employee for the National Labor Relations Board as a trial attorney. Previously, she worked for the NLRB as law clerk to Chief Judge Melvin J. Welles and the United Food/Commercial Worker's Union, Local 400. She received her JD degree in May, '82 from Antioch School of Law. Her community activities involve the Domestic Violence Coalition where she helps monitor police responses to domestic violence and the D.C. Labor Panel and Feminist Alliance Against Rape. She also is a writer for Regis Magazine; D.C. Labor/Legal Worker's Group.

Simon Ansell '80, Bend, OR, is a river guide for Sun Country Tours, which conducts river trips in rafts on the Deschutes River.

Allan E. Anttila '81, Seattle, is employed as a printer with Printers, Inc. He is the lead person in the pre-prep department. Allan is also attending Seattle Pacific University pursuing his M.S. degree in marriage and family therapy. As a community activity he serves as a Crisis Clinic Volunteer.

Anne Appleby '80, Olympia, is self-employed as partner and owner of Kamliche Sea Farms which raises and sells mussels locally.

Harriet M. Arnold '80, Redmond, WA, is a substitute teacher for the Lake Washington School District. She is a P.T.S.A. board member for elementary and secondary education and also is active in a cub scout pack. Her daughter is attending the new Evergreen Junior High in Redmond.

Tom Balaban '79, Olympia, is an assistant grower for the Pearsall Floral Company which manages and assists in planning ornamental crops for greenhouses.

Tom Balderston '80, Olympia, is a self-employed carpenter now remodeling a passive solar conversion of an old house in Olympia. In his spare time, Tom is teaching backpacking with the Parks and Recreation Department and also has been involved in the Thurston County Nuclear Weapons Freeze.

Glenn Baldwin '79, Olympia, is employed by the Community Mental Health as a children and family therapist. Glenn is attending Whitworth College seeking his masters degree in behavioral sciences.

Timothy Ball '80, Olympia, is self-employed as the owner of Solar Engineering Services. He teaches solar domestic hot water workshops for the Bonneville Power Authority and utilities.

James Ballsmith '79, Olympia, is a maintenance supervisor for Morningside Inc. where he has overall responsibility for maintaining 10,000 square feet of the sheltered workshop and its four vehicles.

Mark Bonin '81, Olympia, is employed by Interface as a claims examiner/microfiche reader handling industrial insurance claims. He is applying to graduate school to obtain his B.S.N. or M.S.N. in Nursing.

Daniel Botkin '81, North Massapequa, NY, is a teacher of the emotionally handicapped for the New York City Board of Education. His junior high level class is small, self-contained and geared with behavior modification strategies. During the '81-82 winter, Dan was on a bicycle expedition through Nicaragua and Costa Rica.

Scott Bougher '82, and **Janice Roscoe Bougher '82**, Seattle, are recently married and are making their new home together in Seattle.

Laurie Brock Easthampton, MA, is a freelance writer for educational magazines and documentary films. She has written a book, *An Odd Bestiary*, Chelonidae Press, 1982.

Mari B. Brockhaus '78, Seattle, is a teacher for 8 - 10 year olds at The Little School.

Nancy L. Butterfield '79, Tacoma, is occupied in many activities. She is the vice chair of the Tacoma Indian Center; on the Advisory Board of the OHOYO Indian Women's Resource Center; and editor of the Klah-Che-Min News, Squaxin Island Tribe. Nancy is listed in Minority Women in America, (published by Fisk University, 1982); and listed in OHOYO Resource Guide of American Indian/Alaska Native Women, 1982; She has been selected to participate in the editing program for Minority Journalists, 1982, at the University of Arizona. Upon graduation from the Editing Program, she will be placed in a position as copy editor for a daily newspaper.

Anna Marie Cahall '81, Blanding, UT, is employed by Juniper Acres as a house parent in a group home for girls. She spends her time in counseling, crisis intervention, administration and bookkeeping.

Sharon Ann Campbell '81, Kirkland, WA, is a happy housewife with a ten-month-old boy, born 14, December 1981; he is named Jonathan Michael Campbell.

Sheryann Leslie Campbell '80, Kent, WA, works for the Highline School District as an English as a Second Language teaching aide working with Indo-Chinese students and others. She has tentative plans to move, take off a year or so, and have a child.

Susan Campbell '78, Minneapolis, MN, is a group leader for the Minneapolis Parks and Recreation Department, where she leads groups aged 5 - 12 on natural history and environmental education outings in city parks. She is involved with a group called BEANS that sets up community gardens and local farmer's markets in the inner city. Susan has been a student at Manchester obtaining her secondary school teaching certificate.

Vance Campbell, Sr. '78, Nespelem, WA, is employed by the U.S. Government as an operating engineer.

Ellen Brucker Can '79, S. Royalton, VT, writes an internal newsletter and is the editor for Mary Hitchcock Memorial Hospital. In addition to writing, Ellen edits copy, takes pictures, does the layout and design. Her job is part of the hospital public relations department.

Dennis Carey '81, Seattle, is a branch manager for Northwest Laser. He has been offered a partnership in Calgary, Alberta with WTN Construction Supply.

(Frances E.) Betsy Carey '79, Eugene, OR, is a letter carrier for the U.S. Postal Service. She plans to attend the University of Oregon in the future to obtain her Ph.D. degree in bio-chemistry.

Nina Carter '81, Olympia, has been living in Japan and studying the Japanese economy, society and language. She spent nine months after graduation working for the Department of Labor and Industries in Olympia. She had been active in the Thurston County Nuclear Weapons Freeze Campaign, the Women's Political Caucus, and a small weekly political support discussion group. This fall, Nina is attending TESC, studying for her masters degree in public administration.

Walter Frank Cavalier, Sr. '79, Tacoma, is a health benefit advisor who aides veterans with their VA benefits and advises families of their benefits when a veteran passes away. He is active in the VFW as a service officer, and in Disabled American Vets, Knights of Columbus, and the Veteran's Administration Volunteer Veteran's Service.

Jim Chromey '79, Olympia, is a state trooper for the Washington State Patrol, Thurston County Detachment, Olympia.

Mathew M. Clark '79, New Haven, CT, is attending Yale Medical School for his MD degree.

Bill Cleland '79, Olympia, is employed by the Washington State Department of Social and Health Services as an Environmental Health Inspector II. He has also been a member of the National Ski Patrol, Alpentel, for the past six years.

Nancy Connolly '78, Seattle, has been for the past year a companion/caregiver to her grandmother and working with 'Connection', an adult day center for South King County, where she volunteered as an assistant program coordinator and organizer.

Louis E. Curl '81, Raymond, WA, is self-employed as a semi-farmer, mechanic. Outside activities include the Raymond Masonic Lodge, Francis Grange and on the Grange Fair Booth Committee of Pacific County Fair.

Marlene Czarnecki '80, Longview, WA, is a child care coordinator for the Lower Columbia College, coordinating the child care staff and operating the day care center.

Ellen Daffron '81, Olympia. An office coordinator for Advanced Health, Ellen supervises hiring, interviews, coordinates and handles referrals, does public relations and community networking. She is currently applying to graduate school for teaching certification, and keeps active in Olympia Friends Meeting and WSU Master Gardener.

Lalada S. Dalglish '80, Tacoma, is attending the University of Puget Sound, seeking her degree of M.F.A. in Ceramics. She is an art instructor at a summer camp in Berkeley, CA.

Linda C. Davis '79, Tenino, WA, is self-employed as a counselor. She is attending the Institute for Movement Therapy, Seattle for her certification in movement therapy.

Bob Densmore '79, Kentfield, CA, is employed by Marine Conservation Corps as a work coordinator. He coordinates youth crews working on conservation projects with an environmental education emphasis.

Steven Devin '80, Seattle, is employed as a programmer analyst for the Washington Mutual Savings Bank. He is attending Seattle University for his MSE degree in software engineering.

Justin Dick '79, Denver, CO, is a coordinator for the Denver Center for the Performing Arts, where he oversees construction and operation of a 'state of the art' audio recording and video recording studio. He has been involved in the campaign to re-elect the governor.

Brenda Schwartz Dickson '75, Tyonek, AK, just received her MSW degree from the University of Washington. She also received the Outstanding Graduate Student Award from the School of Social Work. Brenda is about to begin a position developing an Indian Child Welfare program in a native village on Cook Inlet.

Ben Dobbin '80, San Lorenze, NM, is a base camp manager for the Sante Fe Mountain Center, a wilderness training program for locals and other clientele. He is also a member of a local search and rescue unit.

Jim Doble '81, Union, ME, is a part-time produce worker and is building a house.

James W. Doney '80, Seattle, has been accepted for 1982-83 at the California Institute of the Arts to work toward his MFA degree in world music. He has also been performing with three jazz ensembles and the Olympic Ballet.

Eric Dott '81, Madison, WI, is an assistant warehouse foreman for an outdoor gear store, for whom he also gives ski lessons. Eric is on the Board of Directors for Madison Nordic Ski Club and coaches junior cross-country ski racers. He is studying exercise physiology in preparation for graduate school.

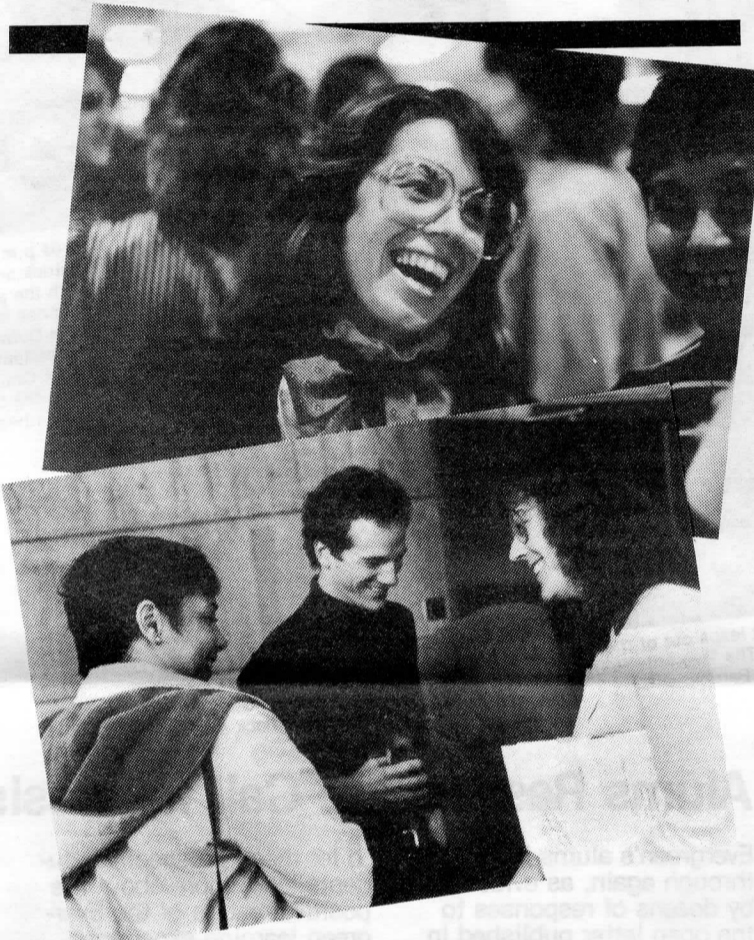
Katelyn Cranmer-Drumheller '81, Seattle, is attending Antioch University to earn her MA degree in psychological counseling. She will be working in the community with children who have physical limitations on building self-image.

Shirley Dziedzic '80, Lacey, WA, is a substitute teacher for the North Thurston School District. Shirley is seeking her fifth year degree in education from the University of Puget Sound. She tutors grade school children in reading after school and during the summer at her home.

Elisabeth N. Eckert '80, New York, NY, is attending Ball State University for her M.A. degree in counseling.

Jim Ehret '79, Clinton, WA, is self-employed as the owner of Studio Iron Works, making ornamental iron work.

Judith L. Evans '78, York, PA, is serving a one-year rotating internship at Memorial Osteopathic Hospital after completing her Doctor of Osteopathy in 1982 from the West Virginia School of Osteopathic Medicine.



Reunion '82: (above) Newly elected First Vice President Julie Grant '79; (below) last year's Alumni President, Janice Wood '76 (at right), talks to new Alumni Board members Tim Blair '80 and Sue Blakeley '77.

Marjorie C. Benner '81, Vancouver, WA, is employed by the Bonneville Power Administration as a public utilities specialist. She writes and negotiates power contracts. In her spare time, Marjorie is attending Portland State University, working toward an M.P.A. She is also a commission member for Clark County Cable TV Commission.

Neil Bestwick '80, Seattle, is a light/sound/video consultant/clerk for the Pacific Northwest Theatre Association.

Cindy Bettinger '79, Tacoma, is employed as a residential counselor for Faith Home in Tacoma. She counsels teenage girls ages 13 - 18 in a group home setting.

Richard D. Bever '80, Lacey, WA, is the director of legislation and education for Washington State Council of County and City Employees, AFL-CIO. He lobbies the legislature, coordinates political action, and conducts training programs in varied subjects for over 50 local unions. Richard was Mayor Pro Tem-City Councilman in the City of Lacey, and Executive Board-Precinct Committeeman for the Thurston County Democratic Central Committee.

Patricia Blumenthal '79, Denver, CO, is a community organizer organizing grassroots churches and neighborhood people, teaching them skills to gain control of their lives.

Patricia Bolding '81, Olympia, works as a deckhand/cook for Kurt Dobszinsky where she plans, buys the ingredients, and cooks all meals on a commercial salmon seiner. Pat is also busy with weaving and calligraphy.

Beverly J. Brown '78, Seattle, is an administrative assistant for Seattle Pacific University where she coordinates and implements the Housing Office's rules and regulations, plus oversees computer projects. Beverly received her masters degree in urban planning in December of 1980 from Antioch University. In her spare time, Beverly is a member of the Arthur Foss Tugboat Restoration and Northwest Seaport Maritime Museum.

Mary L. Brown '81, Tacoma, is a staff representative for the Washington State Council of County and City Employees - AFSCME, involving labor relations, negotiating and administering labor agreements.

Susan M. Brown '80, Anacortes, WA. With the exception of four months employment, Susan has been facing the frustrations of joblessness since graduation.

Thomas Buell, Jr. '81, Charleston, WV, reports the news for the Charleston Gazette, where he is city hall reporter and on weekends is the night city editor.

Priscilla A. Bull '79, Palo Alto, CA, has been a substitute teacher for the past two years. She is also working on her family genealogy in her spare time.

Lynn E. Busacca '81, Shelton, WA, has two part-time jobs: one as a counselor with the Contraceptive Pregnancy Counseling Clinic; another as a coordinator for the local Rape/Crisis Clinic. She finds time to volunteer for other work with Recovery, Crisis Intervention, Advocacy, public speaking, and the Board of Directors for Recovery.

AlumNotes

7

R. Steven Evans '81, Kensington, CA, is an audio engineer for Phil Edwards Recording (PER), San Francisco.

Jacqueline (Jaxie) Farrell '80, College Place, WA, is the education director for Planned Parenthood of Walla Walla. She is also doing private consulting and counseling in women's programs and career counseling. Jaxie is also on the Board of Directors for the Walla Walla YWCA.

Dale Favier '80, Olympia, is self-employed as an investor and does what his accountant tells him. He plans to go to graduate school to study English literature.

Rob Fellows '80, Seattle, is employed by Metro Transit. He is applying to the University of Washington to pursue his MPA degree in public affairs.

Rohn Finard '78, Hoboken, NJ, is self-employed as an artist and in construction.

Demarae Riley Fitzgerald '81, Spanaway, WA, is self-employed as an owner-agent in her own insurance agency. Demarae is also involved with the Kitsap County Chamber of Commerce and Soroptimists.

Russell J. Flemming '79, APO, NY, is a training officer first lieutenant in the U.S. Army. 'Rusty' trains medics, operates a Troop Medical Clinic, and is an ambulance platoon leader. He intends to apply to graduate school to obtain a master's degree in hospital administration.

Ruby Jo Frankfourth '79, Eagle River, AK, is attending the University of Alaska, working towards a degree in planning. Ruby Jo is a member of the Municipality of Anchorage Urban Task Force.

Deanna M. Frost '80, Olympia, is applying to graduate school to obtain her Ph.D. degree in neurobiology. In the meantime, she is extremely busy being a mother.

Shirley A. Galloway '80, Vancouver, WA, is Democratic legislator from the 49th District. She serves on five boards and several committees.

Sara Gehr '81, Dowling, MI, is employed by the Battle Creek Public Schools as a teacher/counselor/health officer. Sara plans to apply to Michigan State University to study veterinary medicine.

Teryl L. George '79, Kentfield, CA, is employed by the Marine Conservation Corps as a crew leader. Her responsibilities include supervising a crew to do conservation work and environmental education projects.

Vel Gerth '80, Tacoma, is a part-time teacher for Tacoma Community College and for the Vogue Modeling and Finishing School, where she teaches effective communication and personal development. Vel is writing a book about a compulsive gambler and will have a CHAP Book of poems published later this year.

Thomas O. Ghormley '80, Seattle, is store manager of Dick's Drive-In with total operational responsibility. Spare time is spent working for the Queen Anne Chamber of Commerce.

Rebecca Randall Gilbert '81, West Newton, MA, works at Cabot's as a waitress and also builds banana boats, sculpts sundaes, pours coffee and cleans the frappe machine. In spare time she is illustrating a privately published book, along with other Celtic drawing projects.

Jim Gilfix '81, Anchorage, AK, is working for the Alaska Psychiatric Institute as a Psychiatric Nursing Assistant II. He is involved in a program to get his license as a psychiatric technician and LPN through Anchorage Community College. Jim volunteers at the Suicide Prevention and Crisis Line.

Peter Goldstone '80, Mexico City, Mexico, is the 'sub director' (assistant director) for Harmon Hall Institute, scheduling and maintaining schedules of teachers, teaching and designing English as a second language. He has been employed since June, 1981. Peter began as a teacher and was asked to administrate last October.

Helen Gould '80, Beverly Hills, CA, is employed by NBC Studios as a writer, editor and coordinator of experimental teletext 'magazine' for NBC.

Michael S. Griggs '82, Olympia, is a cinema manager/projectionist for T.M.T. Enterprises in Olympia. He manages a staff for three cinemas, and projects, ships and shows films. Michael is a freelance photographer, freelance video/filmmaker.

Diane Grise '79, Seattle, is attending the University of Washington, working toward her M.S.W. degree in social work. She was awarded a traineeship with the Rural Mental Health Project.

Diane P. Halpren '81, Albuquerque, NM, is a video technician for KNME Channel 5 TV, PBS.

Jan (Brown) Hamilton Kelso, WA, is a R.N. Assistant for Dr. N.R. Kirkpatrick.

Carla Mari Hasegawa '81, Skokie, IL, teaches kindergarten at Horizons Children's Center. She continues her interest in Greenpeace, Learning Exchange, and Columbia College.

John Heater '79, Olympia, is a partner/baker for the Blue Heron Bakery.

Karen L. Johnson '80, Olympia, is an administrative assistant in the marketing division of Associated Engineers Inc. Karen is also a member of the Chamber of Commerce.

Katherine L. Johnson '78, Columbus, OH, is attending Ohio State University's College of Veterinary Medicine and expects to graduate in June, 1983. Her husband, **Randall S. Henery** '78, Athens, OH, is attending Ohio University College of Osteopathic Medicine and working toward a D.O.

La Neysa P. Johnson '80, Olympia, is attending Pacific Lutheran University for her M.A. degree in psychological counseling. She is currently completing an internship at Good Samaritan Mental Health Center in Puyallup, WA.

Judith A. Jorg '80, Tacoma, works for Frame Makers as a picture framer. This includes framing design, cutting and construction as well as instructing customers in frame construction. Judith is also continuing to work professionally as an artist.

Debra Leslie '80, Chehalis, WA, is a forestry research technician for Weyerhaeuser Forestry Research Center. She establishes and monitors regeneration plots on Mt. St. Helens.

Chuck Linders '79, Seattle, works as an engineering technician for Blazier Engineers. He does drafting and other civil engineering technician work. In spare time Chuck is active in the Western Washington Solar Energy Association.

Tyra Lindquist '78, Olympia, is employed as a bookkeeper/store manager for the Olympia Food Co-op. She spends her spare time with the Thurston County Rape Relief, and the National Coalition Against Sexual Assault.

Ruth A. Lord '80, Fircrest, WA, is a data processing manager for Lord & Nelson.

Shirley Ann Lotzgesell '80, Port Angeles, WA, is self-employed as a piano teacher. She sings in the Sweet Adelines and belongs to the Washington State Piano Teacher Association.

Tamara McCracken '80, Somerville, MA, is attending Brandeis University for her Ph.D. degree in anthropology.

Donna M. McGee '81, Olympia, is a substitute teacher (K-4) for the Thurston County Teacher Cooperative. She is attending the University of Puget Sound/Evergreen to obtain her degree in education.

Robert McHugh '81, Brisbane, Queensland, Australia, is with the Queensland State Department of Education, employed as an elementary teacher, and is simultaneously engaged in a masters of education program at the University of Queensland.

Roger D. McIntosh '79, Yelm, WA, is employed by Thurston County as a detention attendant.

Debbie Miller McIntyre '80, Norman, OK, is a computer operator in the Credit Department of J.C. Penney. She is attending South Oklahoma City Jr. College, studying computer science.

Scott K. Madsen '79, Flagstaff, AZ, is a preparatory/lab technician for the Museum of Northern Arizona, Geology Department. He worked briefly at the American Museum of Natural History, Department of Vertebrate Paleontology as curator.

Mark A. Meredith '81, Bozeman, MT, just finished graduate school, and with wife Heather, is exploring the job market.

A. Marie Moon '79, Lynnwood, WA, is employed by Proctor and Gamble in the Marketing and Sales division.

Melvin E. Moon, Sr. '80, Puyallup, WA, self-employed as a farmer, Melvin still finds time to be active in the Longhouse Project at Evergreen.

Maxinne D. Morris '81, Camas, WA, is self-employed. She is applying to graduate school to earn her M.A. in psychology-ethology. She has just returned from Japan in an exchange program with Hosoe, Sister City and the Youth program with Serei Gawken, Sister School. Last summer, she helped prepare ethnic groups for the Camas Days celebration. Her contributions included Mid-East dancing, a float in the parade, preparation for the Miss Pre-Teen America candidate, and helping host Japanese guests from Hosoe and Homamatsu in July.

Elizabeth L. Morrison '81, Onalaska, WA, is a fourth grade teacher for Chehalis School District. She is a volunteer fireman and E.M.T. on the Onalaska ambulance.

Sally Muchanan '81, Vancouver, WA, is employed by the Department of Social and Health Services for the State of Washington as a caseworker. Sally is a member of the Metropolitan Youth Symphony, AAUW, Fort Vancouver Doll Club, and the Portland Art Association.

Miles Mustoe '80, Wenatchee, is a self-employed business locations consultant. He is working toward a masters degree in economic geography. Miles is also running for political office in Douglas County.

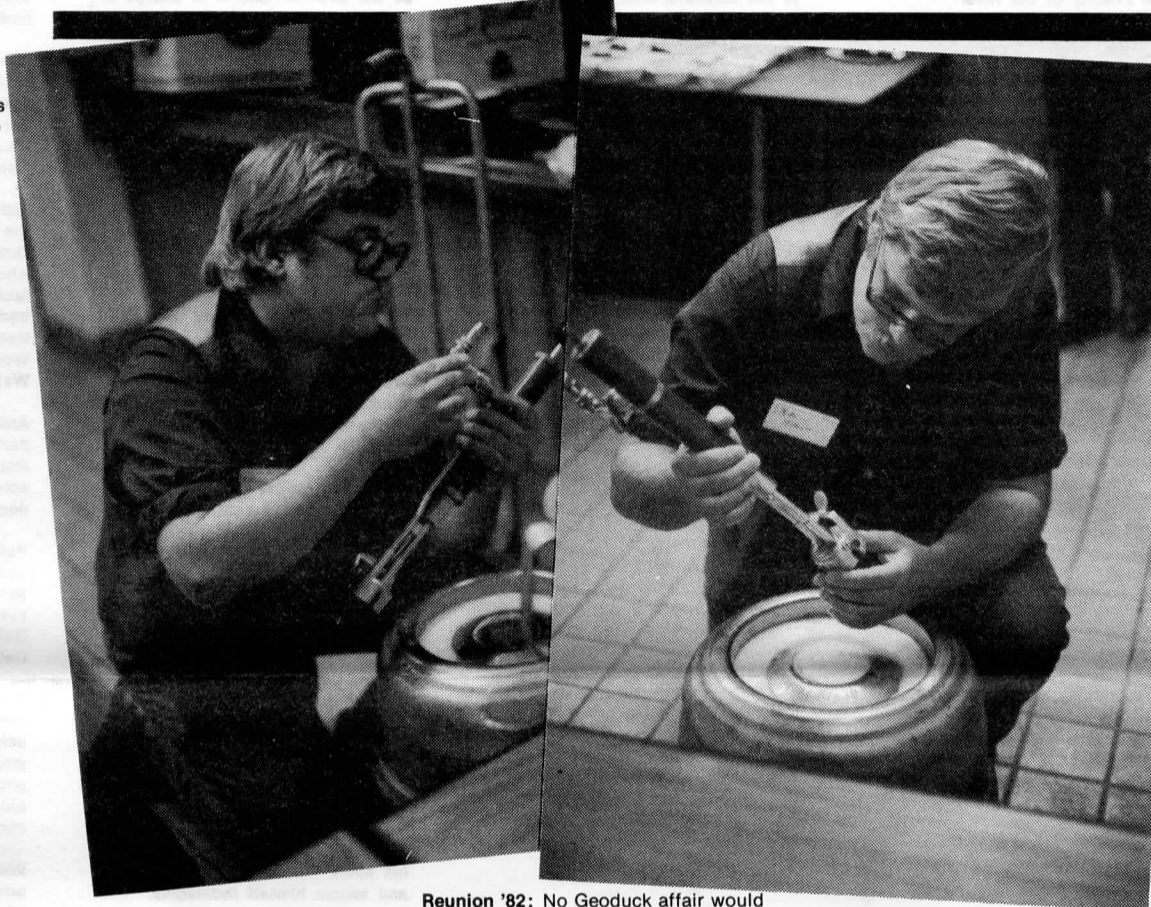
Wendy Murvihill '79, Seattle, WA, is attending Seattle University, working toward her certification as a licensed medical technician. Wendy's outside enjoyments include photography and backpacking.

P. Rachel Nathanson '79, Port Ludlow, WA, is an associate planner for Jefferson County, writing environmental ordinances, planning department office duties, supervising subdivision applications, etc.

Jillian A. Nelson '81, Battle Ground, WA, is employed as an orthoptic technician and optician with the Vancouver Eye Association. He is teaching drawing and is considering teaching oil painting evenings this fall.

Steven R. Noll '81, Spokane, WA, works as marketing manager for Contract Design Associates, performing marketing services for an interior design firm.

Kristin Ockert '79, Colonia, Yap (Western Caroline Islands). Kristin is a Peace Corps volunteer and is in charge of the Outer Island Peace Corps Programs. She is the coordinator and is working for village development in energy. Yap is about 200 miles south of Guam. While there Kristin lives with a family of thirty and takes part in the cooking, gardening and drinking. She states, 'You wouldn't believe it.'



Reunion '82: No Geoduck affair would be complete without refreshments, and **Brian Milbrath** '78, a past Board member, was there to see the keg did not go untapped.

Alanna Hein '81, Olympia, is an advocate for South Sound Advocates for Handicapped Citizens, where she helps disabled people to become completely independent.

James Herman '80, Vancouver, BC, Canada, is attending Simon Fraser University in Vancouver, working for his masters degree in pest management.

Suzanne B. Hopkins '81, Seattle, is currently looking for work but is continuing her interest in El Salvador (CISPES), and is working on a short term project with National Lawyers Guild 'Workers Rights Project', doing research and writing parts of a book on workers compensation.

Leland R. Horrocks '81, Vancouver, WA, is employed by the Federal Highway Administration as a supervisory general supply specialist. His varied duties include supervising purchasing, property, supply, buildings, grounds and maintenance. Leland received his MPA degree from Lewis and Clark College June 13, 1982.

William R. Hucks '79, Seattle, WA, is employed by ARCO Marine as a seaman.

Martin Lee Jackson '80, Seattle, is president of Sun Designs, where he bids, coordinates and performs solar design and installation of solar products. In his spare time, Martin belongs to the National Audubon Society and Solar Trades Council.

Brian R. Johnson '81, Seattle, is currently working for a Seattle law firm, trying to save enough to go to a graduate school of architecture in fall '83. He is also doing some freelance design work.

Elizabeth (Lisa) Kauffman '79, Seattle, is attending the University of Washington to obtain her M.D. degree. She is a member of the Physicians for Social Responsibility.

William J. Kelly '79, Hanover Park, IL, has a position in sales with Owens-Illinois. He is on the Board of Directors of Tempo V Homeowners Association and is a youth soccer coach.

Lawrence D. Kerr '79, Olympia, is currently attending Evergreen in search of his B.S. degree in mathematics.

Greg King '80, Ithaca, NY, is coordinator of Draft Counseling Service for the Center for Religion, Ethics, and Social Policy. He is active in peace and social justice groups, and in the environmental movement.

Charles Kohlinger '80, Amsterdam, The Netherlands, is a sales representative for Malaysian Airlines, involved in sales/promotion/budgeting. He is taking courses in marketing and public relations but finds time to be an active member of the Asian Economic Development Organization.

Tanna S. Lambert '81, Tumwater, WA, is a teacher of astrology for Evergreen's Leisure Ed. Program. Community activities include a holiday project to shut-ins, Christmas, 1981, and furthering astrological research with conferences and personal studies. She is married to Paul Lambert, '81, and they have a son Aaron, born June 29, 1981.

Philip B. Landale '79, Goleta, CA, is a school bus driver and is presently attending the University of California Santa Barbara to seek an M.A. degree.

Carrene M. Loudon '80, Gig Harbor, WA, is an organizational recruiter for the Washington Federation of State Employees. She is attending the University of Puget Sound for her law degree. In her spare time, she involves herself in individual political campaigns.

Kathy Sue Lusher '79, has been in Wakamatsu, Japan for the past two years and will be there for two more years, serving as an apprentice to a world renowned ceramic artist.

Carol MacCracken '80, Centralia, works for the State of Washington as a Job Service Interviewer I. Any spare time is spent with Mark, her 17-1/2 month old son.

Dori MacDonald '76, Morganton, NC, is attending Duke University in the Physician-Associate Program. Her husband is working with the North Carolina Outward Bound School, and they both plan to be active with Evergreen when they resettle in the northwest.

Sherry L. Mahi '79, Carmel, CA, is a salesperson at The Shoe Box. She is a member of the Monterey History and Art Association.

Richard H. McClure, Jr. '79, Randle, WA, is employed by the U.S. Forest Service as a district archeologist doing archeological/historical inventory, field reconnaissance, test excavation, assessment of cultural resource sites. He is currently on a leave of absence to attend Washington State University for an M.A. in archeology. He has done oral history interviewing with elderly in East Lewis County and has restored an old homestead near Randle, where he lives.

AlumNotes

Heather McRae Perkins '79, Eugene, OR, is a restaurant worker at the Homefried Truckstop where she cooks, waits table, washes dishes and helps run the business collectively. In her spare time, Heather is a member of the Oregon Falconers Association.

John Petrich '79, La Conner, WA, is employed by the Swinomish Indian Housing Authority and is executive director in charge of overall management of federally assisted housing for the Swinomish Tribe. John is also vice chairman of the Association of Western Washington Indian Housing Authorities.

Nancy Truitt Pierce '79, Seattle, is director of Women's Programs for South Seattle Community College. Duties include program planning and management, counseling of women students and some teaching. She is fixing up an older home she and her husband recently bought. She is raising her three month-old daughter Teresa. Nancy is active on her church's Christian education committee, a member of NARAL and W.W.U. (lobby group), member of Displaced Homemakers National Network, and treasurer of Washington Association of Community College Women's programs.

Bill Pilling '81, Lafayette, CA, has been a ranch hand during 1981 and '82. He is applying to graduate school to obtain his Ph.D. in social theory.

Lee Piper '79, Edmonds, WA, is the director of the Multicultural Student Service at Highline Community College. Lee received her Ph.D. in 1982 from Union Graduate School, San Francisco, CA. Her varied community activities and organizations keep her very busy. Included are United Indians of All Tribes, Indian Health Board, Indian Vocational Education Task Force, Indian Education National Consultant, Indian Education Program Evaluator, Indian Religious Ceremonies, Ohoyo Indian Women's Organization, Washington Vocational Education, National Indian Education Association, Tacoma Indian Center, and Adult Educations Programs.

Nancy L. Pollard '80, Port Angeles, WA, has been accepted for graduate school at Southern Methodist University, Dallas, Texas where she will obtain her masters degree in music, vocal performance. She made her operatic debut in the Seattle Opera Association in January, 1980 performing in Verdi's Rigoletto.

Laura Linda Negri Pool '79, Portland, OR, is a headstart teacher for the Mt. Hood Community College Headstart program.

Victoria H. Poyser '81, Flushing, NY, is self-employed as an illustrator. She is illustrating covers and interiors for paperbacks and hardcover books for Pocketbooks, Doubleday, Tor, etc. She won her second Hugo Award for science fiction illustration this fall.

Daniel Preston '79, Mt. Rainier, MD, is employed as a research assistant to research and prepare a documentary publication from the papers of William Thornton. Daniel is presently attending the University of Maryland seeking a Ph.D. degree. He obtained a Masters degree in 1981. Daniel is also employed as a teaching assistant at the University of Maryland.

Jean Putnam '81, Olympia, is a homemaker. In her spare time, she teaches English to refugees, teaches a Chinese friend to read and write English, volunteers in church and cub scouts and is actively raising two children while studying a real estate course.

Madeleine Pullman '80, Salt Lake City, UT, is attending the University of Utah for her Masters degree in mechanical engineering. Madeleine is a member of the Utah Solar Advisory Committee and the League of Women Voters.

Geff Ratcheson '79, Bellevue, WA, is a record store manager. He is currently playing guitar with the Roosevelt House Band and with 'Willy'.

David J. Rauh '79, Olympia, is employed by the Lost Music Network. He is the national sales director for OP magazine and president of Three Cities FM Inc., an applicant for a commercial FM radio license. Outside activities include the Crisis Clinic Board of Directors and the The Evergreen State College Alumni Association Board of Directors.

Deanna Ray '80, Concrete, WA, is a park aide for the Washington State Parks Department. She is a volunteer at Concrete Elementary School, working on a committee for community celebrations. She has had a child since graduation.

Chris-Heinz Retzler '81, is an energy research associate, part of a team designing a Gigawatt Device to extract wave energy from Britain's Atlantic coastal waters. He is contactable at Edinburgh University Wave Power Project, King's Buildings, Edinburgh University, Edinburgh, Scotland. Chris continues to be active in groups working against the proliferation of nuclear devices to be used in war.

Tracy Reynolds '80, Coloma, CA, is employed by Mariah Wilderness Expeditions as a rafting guide and leads groups down the American River for two to three day trips. She is also working to complete a M.A. at Sonoma State University in recreation, and finds time to remain involved with the campaigns for the water conservation and Efficiency Act and with Friends of the River.

Maureen K. Schilling '80, Port Angeles, WA, is working as an accountant for ITT Rayonier, Inc.

Steve Schreurs '79, Minneapolis, MN, is attending the University of Minnesota Institute of Technology for a B.S. in mechanical engineering.

Elizabeth Schy '80, Omaha, NE, is involved in an accelerated nursing curriculum at Creighton University. This is a one year B.S.N. program for previous degree holders. She reports no time for outside activities!

Patricia Scott '81, Shinson Beach, CA, is employed for the summer as a supervisor for Student Conservation Association in the Merch Forest, Vermont, where she is responsible for a high school group doing construction, trail work, timber stand and management.

Marjorie J. Shavilk '78, Chehalis, WA, is employed by the Department of Labor and Industries as an employer services chief. She manages a group insurance program and the premium collection programs of the Industrial Insurance Division.



Reunion '82: (above) New Alumni Board member Greg Logan '76; (below) carting alum supplies around campus are past Board member J.P. Jones III '73 and Alumni Coordinator Ellie Dorman '79.

Lisa Rigney '81, Seattle, is working to raise money to travel to the South Pacific to study tropical ecology.

Robert C. Roach '79, Ithaca, NY, is attending Cornell University for his Ph.D. in human nutrition.

Patti M. Roberts '79, Port Townsend, is a coordinator for domestic programs. She is a qualified counselor, outreach advocate, community educator, budget manager and writer.

Eero Roorand '79, Olympia, is self-employed as a general contractor.

Sherry (Smith) Falkner-Rose '80, San Jose, CA, is now sales secretary for Thermostan Industries and is using her nutritionist background in raising her child.

Anita L. B. Rouse '81, Centralia, WA, is employed as a counselor for the Maple Lane School, State of Washington, Department of Social and Health Services. She recently was a field supervisor for an Evergreen student doing his internship at Maple Lane.

Shelley Kirk Rudeen '80, Olympia, is a mother and homemaker.

Debra Savelle '80, Seattle, works as a manager/cashier for Puget Consumer's Cooperative, where she does scheduling, money handling, helps manage the store and reviews the financial data. She is also involved in union organizing and contract writing at the Co-op. Debra has had two articles published, one in 'Dollars & Sense' and the other in 'Moving Food'.

Willene Estelle (Williams) Smith '81, Rochester, WA, has been working as a substitute teacher for eight different school districts. She works in the area K-6, and finds time to volunteer with the Help One Student To Succeed Tutoring Program, an English as Second Language program for adults, and plans to pursue an M.A. in education. She's teaching preschool this fall.

David Sokal '80, Seattle, is spending his time at the New School of Visual Concepts, a technical school in advertising art.

Ken Sollars '80, Tumwater, WA, is the self-employed owner of his own general contracting firm. His outside activities include the Emmanuel Baptist Church.

Cecile E. Sparling '80, Sultan, WA, is working as a substitute teacher for the Sultan School District. She is involved in the Parent-Teacher Organization.

Janet D. Spath '78, Mesa, WA, works for the Old Hotel Art Gallery as the director. She is in charge of marketing, advertising and bookkeeping, as well as being staff coordinator, Public Relations person, fundraiser, and workshop coordinator. Janet and her husband also own and operate a hay and wheat farm.

Peter A. Speek '80, Olympia, is director of operations for The Dana Group where he coordinates major sports events, including television production and syndication. Major clients include the Olympia Brewery.

Rick Speer '76, returned to school in 1980 to complete another B.A. in Computer Science at the University of Washington and is now beginning graduate studies in computer science at the University of California - Berkeley.

Garth V. Spruiell '80, Los Angeles, CA, is an independent video producer, stage hand and sound designer at U.C.L.A. He is attending the California Institute of the Arts this fall for his M.F.A. degree in film.

Sara Steel '81, Steilacoom, WA, is a contract archaeologist for Western Heritage, compiling archaeological data on federal hydro projects for cultural resource management.

Ken Sternberg '81, is employed by the Bennington Banner, Vermont, as a reporter-photographer. He worked on the staff of the Cooper Point Journal and the KAOS news department. In his spare time Ken makes pottery and enjoys himself thoroughly.

Sarah Stockwell '78, Orono, ME, is in a graduate program in wildlife at the University of Maine, after spending four years at Yosemite Institute, along with her husband.

Sarah Stranahan '81, Olympia, is currently self-employed, renovating an old house in Olympia. She is attending the Annenberg School of Communication, where she is seeking her M.A.

June J. Stromberg '80, Vancouver, WA, is Director of the Child Care Center at Clark College. She is a member of Concerned Citizens Against Child Abuse, Parents Anonymous of Clark County and is a board member of East Vancouver Child Care Center.

Siobhan Sullivan '79, Olympia, is a bio-technician for the United States Fish and Wildlife Department, dealing with endangered species data and preparing it for public dissemination.

Patrick K. Tate '79, Olympia, is an Excise Tax Examiner II for the Department of Revenue. He is applying to Evergreen for graduate school to obtain his degree in public administration.

James David Tatz '80, Bronx, NY, is attending the Albert Einstein College of Medicine for his M.D. degree.

Susan Tepper '80, Olympia, is employed as a trainer for the Residential Care Association where she teaches living skills to developmentally disabled adults.

Mark Terjeson '79, Prosser, WA, is with Trout Creek Power Co., and works at design, installation and education in the Alternative Energy office.

Kathleen M. Theoe '79, Puyallup, WA, is employed by McChord AFB Credit Union as a marketing director and is in charge of program design, research, public relations, advertising and training.

Valerie Thorson '75, Seattle, is working at the Seattle Post-Intelligencer and waiting for it to 'merge' with the Seattle Times. The University of Washington will soon see her in the M.B.A. program.

Jonathon T. Todd '80, is currently unemployed, still living in Renton, WA.

Terence Todd '81, Olympia, was an Evergreen adjunct faculty for the Summer Repertory Theatre. He is president of the Olympia Chorale and Light Opera, and is also active with Abbey Players and Harlequin Productions.

Leslie Tose '80, Portland, OR, is self-employed in freelance advertising. She writes for alternative arts and political papers, and is very busy growing a garden, milking goats, setting up a studio and working on jewelry and metalwork.

Marian C. Turner '79, Annandale, VA, is a financial analyst for United Trading Corporation where she arranges for export of produce and fowl to the Mid-East. She also evaluates the company's financial and budgetary projections.

Martha Lee Turner '79, Olympia, is going to be on a farm for an apprenticeship. She is the founder of the Energy Planning Committee of Mason County and also of Mason County Rape Crisis Center.

Edith Owen Wallace '78, Tacoma, is the social services director for Orchard Park Convalescent Center where she is responsible for the facility of one hundred and forty four beds. Outside activities include the National Association of Social Workers, Senior Services of Washington.

Amie J. Walter '81, Olympia, is a part time graphic artist with Susan Rothwell. She is applying to graduate school seeking her M.A. or M.F.A. degree in Graphic Design.

Petrina Lynn Walker '78, Olympia, has had a one-woman photo exhibition in San Francisco at the Eye Gallery. She is a Melrose Place Gallery artist in Los Angeles, California.

Veronica M. Walker '80, Des Moines, WA, will be applying to graduate school in the area of vocational education. Veronica is not now employed but is a volunteer teacher's aide and is on the planning commission for Des Moines.

William Carl Weber '78, Seattle, is employed by Mills, John & Rigdon, where he compiles construction specifications for architectural firms building projects and does construction products research. He is preparing to open his own construction company within the year.

Steven D. Weekly '80, Paia, Maui, HI, is a research associate for Nifal Project where he does research in biological nitrogen fixation in tropical agricultural legumes.

Bruce Wellepp '80, Shelton, WA, is a board member and development chairman of the Mason County Historical Society.

Jan Wells-Minzel '79, Olympia, is a program manager for Washington State Department of Social and Health Services, overseeing a statewide day care program.

Leon Werdinger '81, Lincolnwood, IL, has worked both during the winter and spring as a river guide. Outside activities include being active in environmental issues with his favorite project: 'trying hard to live a good life.'

Sheri Wertheimer '80, Tumwater, WA, is a survey taker for the Capitol Business College, where she conducts employment surveys.

Martha Lee West '80, Olympia, is an unpublished writer in a continual search for Truth and Beauty. She spends a lot of time scrutinizing friends for future use as characters in stories and fills in the hours correcting typos and dusting the desk.

Computers Aren't Human

Continued from page 1

tasks seemed to be feasible, assuming diligence and a 30-hour day.

October 4. Recognizing that it is important to feed the mind as well as exercise the body, I enrolled in an aerobics class. Our first session today revealed that my time would be well spent and by tomorrow I'd have enough sore muscles to remind me to return on Wednesday for the second session. The only difficulty is that now I must add another parcel to the load I already pack around the campus. Tennis shoes, clothes and weights do add up. I'm considering the acquisition of saddlebags; at least I'd be balanced.

October 5. As I drove home from never, never computerland, I questioned why I was knocking my head against this monster in search of some ungrasped truth. Seems easier to stay home, keep those surroundings in some semblance of order, and watch soap operas. However, easier is not always better! Something profound happens to individuals as they reach goals... even small ones. To stabilize, I must look back and realize how far I've come since that first reentry course.

October 6. This morning as I walked briskly across the campus, I was hailed by a "Greener," in Red Square. There was my darling daughter, attired in traditional Evergreen style. This was our first unplanned meeting. All other occasions for meeting had been preceded by a telephone call from Cam saying: "I'm out of food."

October 7. For many of us at Evergreen, the first book seminar reveals the adequacy of our preparation and helps us shape future approaches. The first session demonstrated the diversity of perspectives possible. The seminar turned out to be much like a very good book review group I once belonged to.

October 8. Who ever said computers aren't human! When that computer flashes "Good Job, righto," or "You've got it," a student can't help but feel elated, even if the same response is conveyed to 200 other students. There is absolutely no substitute for positive feedback, even if the medium has been pre-programmed.

October 10. After completing a full week at Evergreen, I find I may need to put on a snorkle and air tank to keep from drowning.

The reality of Evergreen's educational philosophy has assumed form and content for me now. The potential for academic growth permeates the atmosphere everywhere. The instructors are well organized and present goals and objectives that provide unity to the MPI program. The campus environment is comfortable and conducive to its purpose.

As usual, my fellow students have been unknowingly contributing to my education. Evergreen offers much opportunity for student interaction which generates prolific amounts of information. The assimilation of the students' contributions adds a vital dimension for this new Evergreen student.

Alumna "Insures" Evergreen

by Sue Washburn, Director of Development

"There will always be something magical, mystical and miraculous about my experience at Evergreen. I feel privileged to have gone there. I wouldn't be who I am or where I am if it weren't, in part, for the school," says Sarah Gunning, a 1975 Evergreen graduate.

"I wanted to make sure I left something behind; kind of like repaying a special debt. It's my way of saying 'thank you.'"

Sarah's thank you was a \$5,000 insurance policy which she purchased for Evergreen with the college as both owner and beneficiary. Each year, she pays the premiums, which are tax deductible. Upon her death, Evergreen will receive the value of the policy.

An electrical manufacturing engineer, Sarah was recently lured away from Boeing to Hughes Helicopters, a division of Hughes Air West. Now based in Phoenix, she views her Evergreen experience as "an incredible asset."

"At Evergreen I learned how to root out answers, ask questions, and coordinate and interrelate many different kinds of information. My job requires me to orchestrate the entire production process and to act as an interpreter of technical information for lay people. I'm somewhat at a disadvantage because I'm not trained as an engineer, but Evergreen helped me learn to be a creative problem solver. That's an asset that more than makes up for my lack of heavy technical background," Sarah explained candidly.

While at Evergreen, Sarah concentrated in political science and urban studies. She participated in two coordinated studies programs ("Causality, Freedom & Chance" and "Politics, Values & Social Change"). In addition, she participated in group and individual contracts.

"I wish I'd taken even more advantage of coordinated studies at Evergreen. I've never experienced a more complete, exciting, or rigorous academic endeavor. My friends who went to more traditional schools are always amazed at the advanced level of work we did."

Sarah notes particularly that her job entails lots of change, coordination, exposure to new technology. She's constantly learning.

"I love being an iconoclast. I sing, play guitar, write music—maybe someday I'll write a ballad about Evergreen. I think Evergreeners are wonderful. We need us in so many different fields, including industry, if we're truly going to affect social change."

"Evergreen and I are always going to be friends." Thanks, Sarah!

For information about how you can make an insurance gift to Evergreen, contact Sue Washburn, Executive Director, TESC Foundation, Olympia, WA 98505, (206) 866-6565.

1981-82 Foundation Scholars Honored

Members of the Evergreen Foundation Board of Governors and college officials gathered in Gallery 4 on October 27 to honor the 1982-83 Evergreen Foundation Scholars. Chosen for their achievement in academics, the arts, athletics, community involvement and individual leadership, this year's scholars were selected from a field of tough competitors.

Honored at the reception were:

Janet Lee Anthony, Aberdeen
Gary Burris, Renton
Maureen Cassidy, Eugene, Oregon
Susan Cohen, Swannanoa, N. Carolina
Camey Combs, Tumwater
Kathleen Combs, Tumwater
Jenny Ann Covington, Vancouver
David Crum, Yellow Springs, Ohio
Matthew Detering, Tacoma
Gerald Drouin, Hartford, Connecticut
Janet Eidsmoe-Ward, Tacoma
Kimberly Fiedler, Yakima
Irene Gustafson, Lacey

Randal Holycross, Yakima
Evelyn Kelly, Tacoma
Beth Leggett, Tacoma
Stephanie Lile, Gig Harbor
Doug Mackey, Tacoma
Johanna Mandt, Seattle
Donald McDonald III, Seattle
James Mershon, New Orleans, Louisiana
Marion Morgenstern, Olympia
Rebecca Ocken, Olympia
Patricia Orr, Tacoma
Priscilla Pierce, Tarkio, Missouri
William Ray, Midway, WA
Scott Schug, Tacoma
Sally Steckler, Tacoma
Jamie Thomas, Swannanoa, N. Carolina
Kathleen Traywick, Tacoma
Patricia Walsh, Tacoma
Darlene Williams, Seattle
Davina Wright, Tacoma

1981-82 Gifts and Grants: Another Record Year!

Over 1,000 Evergreen alumni, parents and friends, corporate and foundation supporters, and civic and professional groups made gifts and grants totalling over \$134,000 within the past year.

"The joy of giving seems to have infected members of the Evergreen family and we're truly grateful," President Dan Evans exclaimed. "That we should receive such record support in such tough economic times is not only personally heartwarming to me, but also a real expression of caring and confidence in the college."

Unrestricted gifts of almost \$66,000 helped make possible many special projects and programs including:

- 40 Foundation Scholarships
- President's Contingency Fund
- Third World Scholarships
- Evergreen-Japan Faculty Exchange
- Campus Literary Journal
- Conference on "Options Northwest: Local Responses to Global Challenges"

- Evergreen Expressions Performing Arts Series
- Evergreen Summer Repertory Theatre
- Student and Faculty Scientific Research

In addition, restricted gifts and grants totalling \$66,360 funded many designated scholarships, energy research, a Health and Human Services Symposium, athletics, the Unsoeld Seminar, marine studies, art acquisitions and exhibits, and special agricultural research.

Two new community support groups, the Friends of the Evergreen Galleries and the Friends of the Library, formed to meet special needs and to provide program enrichment.

Evergreen also received non-financial aid government grants and other contracts totalling almost \$400,000.

A stellar year! **Thank you!**
Can we top it in 1982-83?
Let's try!

President's Club (Gifts of \$1,000 and above)

W P And Elizabeth Balderston
Wesley & Marie Berglund
C Frederick Buechner
Edward Cazier Jr
Norton & Jane Clapp
Norman & Lee Ann De Shon
George & Margaret Duecy
Daniel J & Nancy Evans
Fred & Dorothy Haley
Halvor Halvorson
George & Caroline Kinnear
John F Koons
Ray & Jeanne Meredith
Dorothy Miller
Carl & Joan Oberman
Dave & Maryellen Olson
Dennis & Joan Peterson
James R Silver
Barbara Smith
Bruce & Mary Stevenson
Joan & Mort Thomas
Walter B Williams
Hal Wolf
Lowry & Wen Wyatt

Cooper Point Club (Gifts of \$500-\$999)

Katherine M Bullitt
Richard & Pat Emerson
H Warren & Gerry K Ghormley
Thomas F Hornbein
Gladys Lebow
Heather M Leithoff
Jim Lester
Albert Mac Leod
C S Matthews
Melvin Moon
Jolene Unsoeld

Tower Club (Gifts of \$250-\$499)

Herb & Shirley Bridge
William Bowen
Dr & Mrs Howard Crawford
Wilbur Downs
Robert Filmer
Roger Fisher
Herbert & Carol Fuller
Patricia W Griffith
Mark & Marilyn Hoehne
George & Isabelle Lamb
John & Barbara B Perkins
Frank Pritchard
Michael Vance Rainwater
Robert & Letitia Reeves
Danny Russell Tishman
Leslie & Devora Turner
Helene Van Buren
John & Lo Ray Walker
Arlene & Martin Zwerin

Evergreen 100 Club (Gifts of \$100-\$249)

William A & Waltrude A Adams
Durwood L & Doris L Alkire
Boone Barker
Dr & Mrs Lafe Bauer
Nicholas S Blattner
Renee Couchie Blattner
Ruth M Bogue
Jack Everett Bozarth
Henry Brockhaus
Norman N Calvo
Douglas Candland
Glen & Jean Carey
Donald W & Malpina M Chan
Clinton Childs Jr
Fred & Dorothy Claggett
Kevin James Clark
J M Colwill
Michael E P Corrigan

Foster Cronyn
Albert & Charlotte Dangler
Michael Dederer
William & Mary Dexter
Dorothy P Dieckman
Stephen & Lucienne Dimitroff
Wm & Judith Driscoll
William & Vasiliki Dwyer
Ben & Stella Ellington
John & Catherine Ensinck
Marilyn Ruth Erickson
Mary K Feldman
Joseph J Fiorilli
Foss Launch & Tug Co
R E Fothergill
D K & Louise Gallagher
Thomas Gallagher, Jr
William N Gates
Ann Dear Gavell
Richard & Rose Gentzell
Ellen & George Ghilarducci
George W & Lila S Girvin
Alan Goldberg
Fred Goldberg
Robert & Lois Gottlieb
Harry & Rosemary Gregg
James Guillelte
Sarah Elizabeth Gunning
Andrew & Dara Hanfman
James Haseltine
Thomas & Sandra Hendrickson
John & Jean Hennessey
L R Hennings
Paul & Winifred Holmes
Walter & Theodora Howe Jr
Robert Hurlburt
Gerald R & Florence E Hulsman
Bill & Pat Jacobs
Linn Christine Jacobs
Julian & Josephine Jenner
Allan H Jetter
Gilbert F & Betty Jones
Henry Judd
Verne K Justice
Melissa Faith Kaplan
Samuel X Kaplan
Kim Kaufman
Allene Kearns
Barnaby & Mary Keeney
Raymond E & Eula C Kirby
Daniel Brandon Koch
Zane & Solveig Lambert
Janice Lambert
Sidney Lasell
Melinda & Gunter Leonhardt
Mort & Elaine Levine
Rona & Harvey Malofsky
Jack Massey
Charles & Miriam Matthews
Charles J & Barbara McCann
Hal & Roberta McClary
James & Jacqueline McFerran
Carson Miller
Steven Douglas Miller
William & Magdalene Nearn
Roderick John Newton
Mario A Oblak
Ed Odegard
Richard Oltman
Daniel & Harriet Ostermann
Gilbert L Oswald
H Martyn & Candace Owen
William H Page III
Hamilton & Muriel Page
James & Connie Pemble
Carl & Catherine Peterson
John A Petrich
George & Mollianne Pickett
Wallace Quistorff
Stuart M & Joann I Reed
Maryann Reynolds
L K Rockwood
Dolores Rogers
Ted Romaine
Rotary Club Of Anacortes
Gayle Rothrock
A E Saunders
Dorothy Schroeter
George & Clara Shinn
Sarah & Al Skinner
Andrew V Smith
Ronald Howard Smoire
Amigo & Mildred Soriano
Arnold Souder
Frank Spitalny
John A Stocks MD

Oliver & Catherine Stonington
Carl Stragener
Philip B & Doris Swain
Gordon & Sallie Syllaasen
Larry & Carol Tate
Robert Byrd Thompson
Iris & Robert D Timmerman
Ernest & Gloria Traugott
Jack Van Valkenburg
Pearl D Vincent
Jack & Elizabeth Von Mettenheim
David E Wagoner
Susan Washburn
Robert & Mary Jane Weber
Marilyn & E Paul White
Kale A & Helen L Williams Jr
W L & Sarah Williams Jr
Arthur & Gertrude Wolcott
Nancy B & Norman Woodbridge
Lazar Wracsaricht
Byron & Bernice Youtz
Norman S Zenker
John & Dorothy Zimicki

Alumni Donors

Jo Ann Sue Abts
Pamela Lynn Adams
Edward Arthur Alkire
Megan Elizabeth Allen
Karla Christina Alstranner
Christopher A Altwegg
Joyce Ellen Angell
Richard A Antisdel
Allan Edwin Anttila
Harriet Michelle Arnold
Richard Dean Atkins, Jr
James Harold Ballard
Kenneth D Balsley
Deborah A Barkus
Craig Michael Bartlett
Jeffrey Dean Barton
Louise Frieda Batson
Samuel Lee Bauman
Annmarie Beckmann
Beverley Verna Belgau
Richard Robert Bender, Jr
Marjorie C Benner
James Scott Bennett
Mary K Bensen
Mary Jean Bergstrom
Michael Lawrence Bergstrom
Carla Christine Black
Julie Gail Blanchard
Nicholas S Blattner
Renee Couchee Blattner
Shellie Arlene Bloom
Neil Magnuson Bogue
Ruth M Bogue
Patricia Ann Bolding
Daren Melanie Bolduc
Judith Elaine Bond
Terry F Bonynge
Gregory Allan Booth
Jack Everett Bozarth
William Harrison Bradshaw
Robert Lyle Brandt
Barbara Jean Branstetter
Dara Dawn Bray
Marjorie G Brazier
Bruce Maxwell Brockmann
Neal Garth Broida
Carmi Christopher Brooks
Melissa Ruth Brooks
Kathie Ann Bidd
Thomas C Buell Jr
Duane Paul Buhrmester
Linda Fischer Buhrmester
John Richardson Burbank
Erma M Burdoff
Paul Gilbert Burnet
Barrett Nelson Story Burr
Lynda Marie Caine
Douglas James Canning
Vicki L Caparoon
Ross G Carey
Dale Scott Carlson
Thomas M Carr
Lawton E M Case
David Lenard Castor
Craig Dwight Chance
Marlo Jean Chapman
Erik Robert Christianson
Irene C Christy
James A Chromey
Kevin James Clark
Erica Elizabeth Clorfene
Dona Cloud
Melva Doris Coates
Kenneth Lee Coffin
Anna L Coggan
Daniel Howard Cohen
Emerson Keith Coker
Lawrence Garner Cole
Nancy Ann Connolly
Carol Jean Cordy
Michael E P Corrigan
Clifford W Cotey
Deborah Ann Creveling
Sharon S Cronin
Raul Davila
Charles Folsom Davis
Pierre Kingsbury Dawson
Joseph Albert Dear
Lee Ann Deshon
Janet Virginia Detering
Carol Norton Detweiler
Steven Ira Devin
Justin Dick
Robert William Dickson
Dorothy P Dieckman
Daniel Arthur Dootson
Diane J Dootson
Eleanor Margaret Dornan
Susan Drumheller
James Allen Duncan
Christopher Taylor Dupre
Mark Dutton
Lance Earl Earnest
Linda Jayne Eber
Elizabeth Eloise Eckert
Bart Greg Eggen
Marilyn Ruth Erickson
Gary Dean Farer
Samuel Graham Farmer
Pamela L Farr
Betty J Ferguson
James Emery Ferguson
Kent Wallace Ferris
Russell James Flemming
James Alex Forsman
Patricia Bellamy Foster
Vincent Emmanuel Foster
William Almon Freeburg Jr
Jill Fleming Freeburg
Vicky Draham Friend
Victoria L Fritzing
Jerry Wayne Fulks
Shirley Ann Galloway
Alyson Elizabeth Garland
Patricia Gael Gibbs
Janet Carol Gilbertson
Laura Caroline Goff
Karen Lynn Goldman

Cynthia Corey Goodwin
Laura R Gorton
Helen Noreen Gould
Julie Anne Grant
Donovan Michael Gray
Teresa Pauline Grove
Jean M Gruye
Jeff Jay Gumeringer
Sarah Elizabeth Gunning
Judith Johnson Guykema
Jean Ann Haakenson
Michael John Hall
Michele Roberta Hankins
Mary Ann Hart
Shaine Kenneth Hart
Leslie Young Harvill
Carla Marie Hasegawa
Shelby Christine Heimdahl
Janet Dean Heintzman
John William Hennessey III
Catherine Hennings
Timothy Joseph Hennings
Margo Stewart Hertlein
James M Hester
William Donald Hillman
Philip Karl Hodges
Harry Holzman
Cynthia Joy Howell
Marcia Isonia Howery
Amy Beth Hunter
Richard Stephen Hunter
Gregory Neal Irwin
Wayne Stanley Iverson
Linn Christine Jacobs
Debra Louise Janison
Barbara Ann Jarvis
Darrel Ray Johansen
Brian G Johnson
Gregory Lee Jones
Laurie Louise Jones
Shirley Maxine Hardin Jones
Eleanor A Joseph
Kirby Tyrone Juhola
Maureen B Juhola
Verne K Justice
Janet Lynn Kalmbach
Melissa Faith Kaplan
Kim Kaufman
Margaret Eliza Kaus
Elizabeth Barnaby Keeney
Eleanore M Kenny
Sandra Ann Kent
Marta M Kick
Edward Allen King
Kathryn Elise Knutson
Daniel Brandon Koch
Joseph John Koczur, Jr
Elizabeth Mary Koenig
Stephen Michael Kopp
Alan Jay Krieger
Lyda Ebert Kuth
Ken D Lafontaine
Barbara Lou Laforge
Michelle Elise Lagory
Paul Kenneth Lambert
Debra Sue Lara
Geraldine Irey Lawrence
Peter Wayne Lawson
Wallace E Leake
Linda Susan Leigh
Richard S Lichtenstadter
Rebecca Jane Lieberman
Joanne Lind
Judy Carol Lindlauf
Andrew Stuart Lindsay
Kenneth Ray Linkhart
Denise M Livingston
Roderick Craig London
A Jane Lorenzo
Thomas George Lufkin
Diane M Lutz
Linda G Lux
Carol Sue MacCracken
Pamela Ann MacEwan
Duncan Paulson Mann
Charles Paul Marshall
Barry Nolan Martin
David H Martin
Ralph Ira Mason
Paul Mastrangelo
Kirk Alan Matteson
Peter Herman May
Tamara Jeanne McCracken
Lawrence Charles McDonald
Amy McFarland
Geraldine McGowan
Prudence McHugh
Linda S McLain
Gerald Keith McLaughlin
Rodney H McLean
John M McNally
James Gordon Meiklejohn
Lee Henry Meister
John B Mellen
Christina Ann Meserve
Diana Lee Meyer
Carson Ann Miller
Norma Joan Miller
Steven Douglas Miller
Betty W Moffett
Christopher J Mondau
Daniel James Montgomery
Patricia Lucille Moodie
Charles T Moore
James Frederick Moore
Timothy G Moore
Kay Elaine Morgan
Roland Arnold Morris
William Lester Morris
Diane Gail Morton
Velina Dianne Murray
Nancy A Musgrove
Stephen Henry Nebel
Jillian Nelson
Elizabeth Newcomb
Polly A Newcomb
R Scott Newcomb
Roderick John Newton
Wesley Miles Norman
Marya J Nowakowski
Debra Ann Nystrom
Marc Solignac O'Connor
John Joseph Oldham
R Timothy Oliver
Charlotte Francella Olson
Leslie Woodruff Owen
Leonard James Pagliaro
Constance Palaia
Melissa Baldwin Parker
Janet E Partlow
Richard Theodore Pass
Nathan E Paull
Kraig Ira Peck
Mary Barbara Petersen
Jack Douglas Peterson
Mark Dwire Peterson
Vicki Sue Phelps
Kevin William Phillips
Molly Ann Phillips
Steven Frederick Pinard
Richard, Dennis Poff
Wallace Edwin Potter
Rita Agnes Pougiales
Victoria Hill Poyser

Judith Ellen Prest
Mary Lynn Prevost
Neil A Pritz
Ramona Provost
Michael Vance Rainwater
Larry Kon Ralphs
Victoria Schurz Randlett
Cathleen Michele Rapp
Linda Elise Rasmussen
Kay Josephine Rawlings
Carol Beth Regimbal
Frederick Benjamin Rice
William Norval Rice
Susan Mancini Richards
Annette E Rickles
Kenneth Paul Ritland
Jerome Roberts
Nancy Jean Roberts
Ronald D Roberts
Tyler Frank Robinson
William Francis Rotecki
Geoffrey Scott Rothwell
Anita Lawrence Rouse
Frank Guilford Russell
Marie Elena Russo
Scott Alan Salzer
Terrese Ann Salzer
Antonio Santoy
Debra L Savelle
James Robert Sayce
Laurie J Schaetzel-Hill
Maureen Kay Schilling
Stefan Schinzinger
Susan May Schoos
Douglas P Scrima
Ingrid Helene Scrima
Janice L Seaton
Patrick James Seaton
James Claire Seekins
Stephen David Semel
Marjorie Jean Shavlik
Suzanne Shaw
Chuck R Shelton
Suzanne Hall Shelton
Judith R Shoshana
Robert Edward Shumate
Andrea Mankus Siani
Sergio Francesco A Siani
Mikael Warren Sikora
Janet Marie Silliman
Robert Hamilton Sims
Richard Noel Skadan
Jack S Slagle
Rachel Wolcott Slagle
John Ledyard Fletcher Slee
Daphne Fisher Smith
Gary Thomas Smith
Sharon Diddy Smith
Ronald Howard Smoore
David Hyam Smullin
Ellen Clark Sogge
Aaron Sonogo
Marilyn Ruth Soriano
Mark Stephen Souder
Lionel D Spears
Daniel Dee Spencer
Elizabeth Pearl Springer
Wendy Jo Squires
Josephine M Stack
Carla M Stahl
Nancy Gray Stevens
William Henry Stevens
R Scott Stilson
Anne Exton Stone
Steve A Strasen
Kaye Utsunomiya Sullivan
Ronald A Taggart-Definbaugh
Gail Tanaka
Richard David Thacker
Kathleen Mavis Theoe
Kevin Llewellyn Thomas
Tyrone N Thomas
Roberta J Tidland
Diane Patricia Tiffany
Danny Russell Fishman
Jerry Roger Todd
William Joseph Tomlinson
Robin F Turner
Glenn Thomas Tucker
Talbot Uehlinger, Jr
Jack Warfield Van Valkenburg
Doris M Vandenberg
Jeane Colleen Vanderiet
John Edward Vasquez
Richard D Veach
Gerald F Vermeire
Pearl D Vincent
Jan Wagner
Petrina Lynn Walker
Kevin Counts Walsh
Marcia P Wanderer
Norman Thomas Warner
Sherry Annette Warren
Frank J Wastrowski
Bernice L Watkins
Zelda Jane Waxenberg
Diana Marie Weeden
George Francis Weirich
Sheri Kay Wertheimer
Richard Williams, Jr
Debbie Lee Williams
Elizabeth Ann Williams
Holland H Williams
Patrick Lee Williams
Lucinda Anne Williamson
Marsha Elise Wolf
Carl Frederick Wolthagen
Nina Esther Wolsk
George Stanley Wood
Janice Marie Wood
Lucy Norcross Woods
Theresa Wright
Victoria Yeager
Thomas David Yesberger
Mary Patricia Youngman
Margaret Youtz
Marjorie Anne Yung
Beverly Lynn Zarnow

Parent Donors

Sheila R Ackerlind
David J & Ilene Adams
William A & Waltraud A Adams
Eugene & Marilyn Alexander
Durwood L & Doris L Alkire
Martha Amyes
Larry & Margaret S Anderson
Quentin & Annabelle M Anderson
George F & Jane Ansley
Phil & Helen Arnold
Richard & Louise Arnston
Carl S & Ruth S Auerbach
Mr & Mrs Milton Baker
Franklin & Mary Balch
W P and Elizabeth Balderston
C D & Barbara Baldwin
Del & Virginia Ballard
Daniel & Geraldine Baris
Boone Barker
R Phillips Barker
George & Gwendolyn S Barnett

Paul A Jr Bartmess
Dr & Mrs Lafa Bauer
Gordon & Libbie Beck
Joan E Beldock
Glen & Mabel Benedict
D W & B B Bennett
Ruth E Bennett
Wilson H & Ruth F Bent
Marta Ellen Berg
L S Bergen
Knut & Margaret Berger
Ray H & Roberta J Betcher
Carl R & Anita Biedermann
John T Biggins
Gerd Bjorseth
Virgil & Maxine Blaser
Eugene P & Illiene Boawn
Jeanne R Bonynge
John A Boston, Jr
William & Mary Elizabeth Bowen
Gerri A & William C Brauneis
June R Braverman
Stanley B & Aviva Breen
Dorothy & Jacques Bressiux
Edward and Alice Brezon
John D & Kathleen Bristow
Robert Brock
J Henry & Barbara Brockhaus
Arnold Brotman
Bill Brumstick
C Frederick Buechner
John W & Helen W Burbank
Kenneth J Burke
Don & Patricia L Burnet
Richard & Zona Busselle
James N Butler
John & Florence Butler
Eleanor W Butz
Betty A Calambokidis
W Daniel and Mary Calvin
James & Lila Cammack
Baylor Capers
Glen & Jean Carey
Evan & Mildred Carlson
Vernon & Jeanette Carstensen
Philip L & Virginia Carter, Jr
Mr & Mrs Wayne Cassatt
Edward Cazier, Jr
James & Bonnie Cecil
Irwin & Muriel Chess
Clinton Childs, Jr
David & Betty Christianson
Elaine S & Clyde C Clark
William H Cleaver
Leland I Coates
Edward W Coffey
Robert & Elizabeth Cogburn
Frederick Cohen
Robert and Alicia Cohill
Ellis & Ilene Collins
Freddie Mae Collins
J M Colwill
Virginia Cooper
George & Janice Cornell
Janice M Cramp
Dr and Mrs Howard Crawford
Marianne Crawford
Mrs Marion Creveling
Alfred and Leona Culpepper
Mary Rose Curtis
Felix and Grace Czaja
Carroll Damron
Robert B & Irene A Dana
Albert & Charlotte Dangler
Donald A Davidson
A John & Marilyn Davis
Hartwell Davis
William J & Joanne Davis
John B & June Dawson
Raymond & Judith De Buse
Giovanni & Barbara De Chiro
Alice R Dean, MD
Robert D & Yvonne S Dean
Billie C Delawie PhD
William L & Jayne Dematteo
Al & Donna Denman
Rose M & Denio A Dentali
Harold Depkin
Frank & Bernice Deppe
Marjorie & William E Derrah
Charles P Dethier
William & Mary Dexter
Annaweiss Dezube
Robert & Joan Dillingham
Kendall D Doble, Jr
Kenneth & Leola Doerge
George H & Mary F Dolan
Tullio J Donisi
Clayton O & Helen A Douglass
Wilbur Downs
Wm & Judith Driscoll
Rita Dubrow
James E & Rachel Dudek
Margaret H Dykes
Alfred K Eckersberg
William & Ruth Eckert
Warren E & Irene Eikenberry
Robert & Barbara Eiseman
Lucile Elenko
Ben & Stella Ellington
Lucile L Ellis
Richard & Pat Emerson
A Bradlee Emmons
Dorothy & Richard Englander
Stanley R Engle
John & Catherine Ensinn
Gordon J Erickson
Arthur & Ruth Farber
Barbara & Dennis Farnsworth
Sheldon & Helen B Farr
Francis A "Frank" Farrell, Sr
Winifred Feise
A Daniel & Jessica Feldman
Mary K Feldman
Morton & Alice Fine
Myron & Elka Fink
Albert E Finn
Joseph J Fiorilli
Joseph H & Caroline G Fischman
D F & Genevieve Fisher
Evelyn C Fisher
Roger J & Eileen W Fisher
Michael J Flaherty
Charles V & Mitzi Fletcher
Gladys L & Billy J Fogg
Robert & Helen Foster
Robert E Fothergill
Conard Fowkes
Ralph & Mary E Franklin
Stanton & Barbara Frederick, Jr
Marc W Freshwater
Harold A Friedberg
August G & Jeanne Fromuth
Herbert & Carol Fuller
Jean M Fulton
Philip Fuqua
Thomas & Vivian Gallagher, Jr
John J & Jane Galt
James A & Thea J Gast
William N Gates
Ann Dear Gavell
Richard & Rose Gentzell
Norine & Leon Gerson
H Warren & Gerry K Ghormley
Keith C & Dorothy B Gibson

Sally Giovine-Kerr
George W & Lila S Girvin
Helen Gleichman
Joseph W & K F Glidden
Alvin & Judy Goldberg
John B & Therese Goodrich
John & Adele M Gorham
Robert & Lois Gottlieb
Richard L & Mary Lee Gowell
Stanley Gray
Robert & Rose Green
Harry and Rosemary Gregg
Patricia W Griffith
Herman & Linda Grubin
John J & Nancy Gudyka
James M & Elizabeth C Guthe
Joseph & Marguerite Guthrie
Fred & Marjorie Hahn, Jr
Fouad A & Georgia H Halaby
H E & Nadine Hamilton
Carolyn & H Thurston Handley, Jr
Robert & Clarice Hansbrough
Lee & Marilyn Hansen
Anton G Hardy
James & Ruth Hasegawa
Robert & Edna Hauser
Magnes & Norma Hausken
Carol B Haviland
Emil Fujiko Hayashi
Ray & Christine Hayworth
James F & Gertrude E Hebert
Robert F & Adele Heinke
Rabbi Meyer Heller
Thomas & Sandra Hendrickson
John & Jean Hennessey
L R Hennings
Ray & Beulah Diven Henry
Sarah Herman
Anne Hicks
Richard K Hill
Elizabeth Hirschman
Joe Hogan
Paul & Winifred Holmes
Thomas S & Mary L Holmes
Frank G & Lois Horino
Floyd & Frances Horowitz
Jacob Horowitz
Richard Horowitz
Joseph C & Virginia Y Howell
Dan & Mary Hughes
Gerard R & Florence E Hulsman
ira F & Jean E Hurlburt
Robert N & Kathleen Hurlburt
Ernest & Ruth Hurwitz
David & Janet Huskey
Ronald L Huston
Cecile Isaacs
David and Rose Jacobs
Jerry & Sarah Jacobson
Theodore Jacoff
Joseph S & Patricia A Jensen
Donald L & Gloria M Jeter
Allan H Jetter
William & Paula John
David T & Margaretta Johnson
Jo Ann Johnson
John & Mary Cay Johnson
Patricia L Johnson
William & Margaret Johnson
Gilbert F & Betty Jones
Henry Judd
Richard B Kaiser
Hiroshi Kaku
Drea M Kallerges
Samuel X Kaplan
William & Lucille Karr
William G Karrys
Mildred Katz
Charles A & Carolyn M Keck
Barnaby & Mary Keeney
Betty J Kennedy
Marjorie H Kennedy
Inez R Kertson
Laurence E & Darlene G Kerwin
Veselin & Lydia W Kesich
W J & Wilma Kidwell
Ishmael K Kincaid
Raymond E & Eula C Kirby
Judy R Kirk
William J & Felicia Kirk
A E & Melva Kirkbride
Donald & Dorothy Kirsch
James Kitchick
Alice Klayman
Mark & Joan Klyn
Edward W Knight
Lowell B & Shirley Knutsen
Charles Koch
Joseph & Ayoko Koczur, Sr
William A & Phyllis Koehnline
John F Koons
Bert Kopp
J Walter & Audrey Kosman
Joseph & Greta Kramer
Elbart & Nava Krieger
Leah M & Rivan Krieger
Stephanie Lafarge
Zane and Solveig Lambert
Robert & Ann Larson
Sidney Lasell
Helene F Lattimore
M J Layton
J Kathleen Learned
Roland Lease
Gladys Lebow
Melinda & Gunter Leonhardt
Otto & Elizabeth Lerbinger
Mort & Elaine Levine
Norman S & Louise R Levy
Ed & Stephanie Lewin
Audrey Lewis
Richard & Irene Lichtenstadter
Kenneth M & Carol S Ligare
Joseph & Connie Linesch
Herber R & Ellen P Loewenthal
John & Evelyn Loftus
Edwin & Estelle Lustbader
Douglas & Shirley Lutz
William Lysak PhD
Albert MacLeod
Julia C Macleod
Richard & Phyllis Madan
Joseph Mains
Jacqueline Majors
Robert O & Irene Malin
Rona & Harvey Malofsky
Antonio P Mamallo
Roman & Phyllis Mankus
Charles & Miriam Matthews
John C & Elizabeth Matthews
Bruce T & Sally J Mauser
Joan M & Richard May
M Elaine McCann
Allan T McAdam
Jay R & J J McCament
Robert & Marjorie McCarthy
Beale & Dana McCulloch
David W & Nell McDonald
James & Jacqueline McFerran
Richard McGarvey
John & Sally McGaw
Robert L & Joan McLwain
Donald McKinley
William & Margaret McLaughlin

Donald A McLean
Jack T & Agnes McLin
Margaret L McMurtrey
Leah McNeil
Charles & Rita McQuarrie
W Roy & Ellen Mellen
Eva C Metzger
George & Margaret Meyers
Franklin & Jean R Michaels
Stanley G Miller
Carolyn Miller
Robert G Miller
Arnold & Ann Millhauser
Loren D & Norma J Millman
Glenn Mills
John A & Katharine Mills
Henry Mishima
Thomas J & Lorraine M Mitchel
Herschel Mobley
Melvin Moon
Alfred S & Isabel Moore
Myron Morrison, Jr
Margaret C Moulton
Rufus Moulton
James E & Kathleen Mountjoy
Harold & Susan Mozer
Orville & Caroline Murphy
Robert K & Mary E Murphy
Doris M & Frank F Naglich
James E & Sarah Navarre
Jerome & Eleanor Neal
William & Magdaline Nearn
Daniel W Nebert
Leonard Nelson
Joyce T Netishen
Harry & Joy Newman
David & Judith Nicholson
James B & Jeanette Nickerson
Donald & Hilda Nicoll
Edwin & Mayme Nishimura
James O Norman
Richard & Hanna Northway
Robert and Johanna W Norton
Robert D & Ann Norton
Roger & Hanna Norton
Barbara Nuckles
Amand O & Ventura Nunez
Jack & Kathryn Nuszbaum
Mary Louise O'Neal
Allen & Harriet Oakley
Roy & Virginia Ockert
June & Robert W Odell
Neldra S Oehrling
Tom & Joyce Olin
Dick & Virginia Oliver
Arne & Jo Ann B Olson
Charles Olson
Dave & Maryellen Olson
Karl & Peggy Olson
Richard Oltman
Joel & Yuthka Onodera
David & Cary M Ormond
Martin & Catherine Ormond
Daniel & Harriet Ostermann
H Martyn & Candace Owen
William H Page III
Hamilton & Muriel Page
Ruth Panter
Glenys Pare
Kenneth R & Kay L Parker
Elizabeth B Parks
Emma & Walter Pavelchek
Lewis J & Genevieve Peha
James & Connie Pembie
Bradford & Nancy Perkins
James & Shirlee Perkins
Arthur & Idella Peterson
Carl & Catherine Peterson
John A Petrich
Robert & Nancy Pfeiffer
Harold & Nancy Phelps
Viola M Phillips
Orville & Grace Phillipson
William & Lillian Poe
Lu Anne & Joseph Malone Post
Thurman R & Laura S Poston, Jr
Paul and Mary Pruitt
Robert & Ruthe Lyons Ramirez
Leland & Betty Ramsey
Robert & Virginia Ray
Edward & Lorraine Raymond
F W & Ann Reading
Howard & Verna Reagan
Stuart M & Joann I Reed
Robert & Letitia Reeves
Carroll C Reid
Paul & Jane Reid
David & Dorothea Reinthal
Donald J and Janice K Reish
Wayne S & Beatrice Rial
Robert F & Virginia Richardson
Virginia & Derrol Ricker
Dr Norman & Eva Rickles
Norman Rickles
Ramon & Laura Rime
Bernard & Myrna Childs Rivkin
Caroline T & Donovan D Robb
Gilbert Roberts
Mervin Roberts
Robert E Rockwell
Richard M Rodrigues, Sr
Dolores Rogers
Austin & Annette Ross
Frank C & Sabina P Rotecki
J M Ruddy
Irwin & Thelma Sameth
Robert & Lucy Sato
George & Charlotte Sawtell
Clinton B & Emma Saylor
Calvin & Alice Muir Schmitt
Richard L & Doris I Schneider
Dorothy Schroeter
Loren & Alice Schurke
William L & Mary Jane Scurlock
Lester & Harriet Servid
John R & Betty S Shelton
Charles & Dorothy Shepard
George & Clara Shinn
Richard J & Nancy R Shipley
Ricklef & Jean Shirk
Julian & Catherine Shook
Stuart & Frances Shumway
Cyndia L & Alfred T Siedentop
Paul & Harriet Siegler
John W Siemens
Gerald & Sally Sieracki
James R Silver
John & Ruthann Silvernale
Jimmy & Susie Simmons
Robert & Darlene Simmons
Horace & Katherine Simms
Warren & Virginia Simms
John & Anne Singleton
Maxine K Sitts
Sarah & Al Skinner
Richard & Mary Skutt
Alice Corp Smith
David & Catherine Smith
John K & Geraldine Smith
Robert & Rachel Smith
Rosalie M Smith
Wendell Smith
Louis & Silvia Smoire
Louis & Ruth Smullin
Ernest Sokal

Herschel & Joan Solomon
John & Betty Soreng
John & Bodie Sorenson
Amigo & Mildred Soriano
Arnold & Eileen Souder, Jr
Leonard & Ruth Southwick
Raymond A Speer
Frank Spitalny
Mara Stahl
Phil Stalheim
F J & Gloria Sterbentz
Robert & Ruth Stewart
Jesse and Mildred K Stice
William & Judith Stillwell
John A Stocks MD
Richard & Virginia Stockwell
Walter & Anita Stolor
Mary F Stone
Michael & Annelore Stone
Oliver & Catherine Stonington
Carl Stragener
Dean & Yvonne Stuart
Edwin Sykes, Jr
Gordon & Sallie Sylliaasen
Soo Hong & Hoe Shock-Kyin Tay
Frank Webb & Charlotte Taylor
Richard & Viola Taylor
Inge & Rufer J Theisen-Rufer
John & Bonnie Thornton, II
Iris & Robert D Timmerman
Donald G & Edna L Tinney, Sr
Jerry & Ann Tobia
Viola & Lester E Todd
Clifford & Sarah Tomb
Charles M & Jessie Tompkins
James F & Lura Lea Topping
Lawrence Tose
Irvin Touster
Samuel H & Julie-Ann J Traub
Ernest & Gloria Traugott
Ranger & Dolores Travis
Carl & Priscilla Triebs
Leslie & Devora Turner
Rose Turner
Clifford L Tweedell
Jolene Unsoeld
Helene Van Buren
Ruth Van De Reit
Marvin A Van Dilla
Irene & Lloyd Van Etta
Richard & Carol Vanhaagen
Charles F & Barbara Vengrove
Fernando G & Golleen D Vescia
Gunars & Ieva Veveris
Jack & Elizabeth Von Mettenheim
John & Jane Vosick
W L & Pat Waddington
Jon W & Audrey D Waldorf
Herbert S Walfish
John & Lo Ray Walker
Phoebe C Walker
Richard W Walkup
Alfred & Catherine Walter
Webster B & Audrey L Walton
James F & Rubye K Ward
Frederick & Helen Warner
Ralph J Warren
John E Wason
Barry Wasserman
Robert & Mary Jane Weber
Alan N Weeden
Harvey J Weinstein
Jo Anne Welch
S Robert Wellings
Robert & Louisa Wells
Jack & Irene Wentworth
Estelle A Wertheimer
Irene Westermos
David & Dixie White
Marilyn & E Paul White
Robert & Elizabeth Whiteside
Carlyn J Springer Wickman
Ann C Wilkins
Kale A & Helen L Williams, Jr
W L & Sarah Williams, Jr
William & Jeanette Willis
Ken Winkley
Robert W Winsor
C L & Jane Wisseman
Arthur & Gertrude Wolcott
David & Libby Wolf
W G Wolston
Susan & David L Womeldorff
Benjamin & Ruth Woo
Harold E & Clarice C Wood
Nancy B & Norman Woodridge
Christopher & Margaret Wright
Jo Ann Wright
Norman P Wynn
Thomas L & Carol N Yamamoto
Frank & Marilyn Youngman, Jr
Byron & Bernice Youtz
Eldon Zeller
Norman S Zenker
John & Dorothy Zimicki
Arlene & Martin Zwerin
Sidney & Rosemary Zwick

Friends of Evergreen

Diane & Dennis Adams
Richard Alexander
Grace A Allen
Herluf & Else Anderson
Jeremy & Janet B Anderson
Mary E Anderson
Clara Bell Angle
Eleanor Aspinwall
Marcheta K Bean
Robert & Mary Benson
Wesley & Marie Berglund
Michael & Frances Beug
Michael L & Judy L Bigelow
Elane Bills
Meta M Bishop
Marv Bondarowicz
Charles & Lori Boyer
Lester P & Pansy G Bray
James D & Linnea Bremner
J Arnold & Judy Bricker
Herb & Shirley Bridge
Betsy A Bridwell
Carol Britton
Bronwyn V Brothen
Anne Buck
Katherine M Bullitt
Florence G Burrows
Beth & Lee L Buzzard
Norman N Calvo
Douglas Candland
Donald W & Malpina M Chan
Gary Chastain
W Ian & Helen Christopher
Fred & Dorothy Clagett
Norton & Jane Clapp
Jon & Nina Collier
Steven & Alison Conner
Jack M Crabs
Dennis A Craig
Norman & Lee Ann De Shon
Michael Dederer
Elizabeth Diffendal
Stephen & Lucienne Dimitroff

Elmer & I E Dubuque
George & Margaret Duecy
John & Vasiliki Dwyer
Lester & Mary Eldridge
Judith C Espinola
Daniel J & Nancy Evans
Robert Filmer
Donald L & Susan K Finkel
Foss Launch & Tug Co
Karen Fraser
Ulrich Fritzsche
Herbert & Carol Fuller
Holly Gadbow
Gary Galbraith
D K & Louise Gallagher
Frank Gallagher
Patricia Gallagher
Volney Gaudette
Herb Gelman
Ellen & George Ghilarducci
Don & Marguerite Gibbs
Mrs Earl Gibson
Gordon Gilkey
Alan Goldberg
Fred Goldberg
R R Golick
Alvin Gordon
Robert Graves
Chauncey L & Marion R Griffith
Gladys Guilbert
Fred & Dorothy Haley
Halvor Halvorson
Kenneth & Britta Jo Hammond
Andrew & Dara Hanfman
Maurice & Betty Harmon
James Haseltine
John & Betty Hatfield
Creighton E & Florence E Hay
Robin & Michael Heaney
S L Hank Heinrich
Peta Henderson
John & Helen Henry
Craig Hickman
Douglas & Linda Hitch
Mark & Marilyn Hoehne
John A & Mary Q Hommeyer
John J Hoover
Donald & Gene Hopkins
Thomas F Hornbein
Walter & Theodora Howe, Jr
Will Humphreys
James & Virginia Ingersoll
Bill & Pat Jacobs
Douglas & Bonita Jacques
Julian & Josephine Jenner
Bernard & Mary Johansen
Allene Kearns
George & Caroline Kinnear
Judith A & Benjamin A Klein
Robert Ronzio & Elizabeth Kutter
Evelyn Laird
George & Isabelle Lamb
Janice Lambert
Margaret & William Lear
Henry Lehaug
Albert & Flora Leisenring
Heather M Leithoff
Jim Lester
Mark Levensky
Karen Lichtenstein
Jack Lindskog
Jean Mandenberg
Ruth March
John C & Margaret J Marshall
Jack Massey
Charles J & Barbara McCann
Hal & Roberta McClary
Gregory S McCrone
James R & Kathleen A McDowell
Earle W & Susan N McNeil
Raymond & Jeanne Meredith
Ward C & Alice Miles
Christal & Ed Miller
Richard P & Karen R Mills
Darrell & Kitty Mintz
Lawrence & Janet Moniz
Janet H & Steven L Moore
Gaylea C Morris
Timothy Mulcahey
Native American Studies Program
Jerome E & Eleanor J Neal
Emily Nelson
Warren & Nan Netherland
Paul & Catherine Neuffer
Dwight & Valerie Noll
Royal M & Irma M Nyba
Carl & Joan Oberman
Mario A Oblak
Ed Odegard
David Olson
Oly Assn Prof Mortgage Women
Gilbert L Oswald
R Alvin & Maxine Clark Padget
Carol Papworth
Kenneth & Marianne Partlow
Dorothy & Brenda Patnoe
John & Barbara B Perkins
Dennis & Joan Peterson
Celia Phillips
Eric & Marge Phillips
R G Phillips
George & Mollian Pickett
Bette L Pierce
Ethel M Pierce
POSSCA
George & Gail Pozzuto
Frank Pritchard
Wallace Quistoff
Sam & Margery Reed
Maryann Reynolds
Herbert S Ripley
L K Rockwood
Barbara Fay Roder
Rotary Club Of Anacortes
Gayle Rothrock
Richard Rowan
A E Saunders
Charles Schiff
Lynn Schrader
Leonard W Schroeter
Pablo Schugurensky
Richard & Janet Schwartz
William L & Beverly Seabloom
Gerard Sheehan
H H & Mary Skinner
Niels Skov
Robert & Ruth Sluss
Andrew V Smith
Barbara Smith
D G Smith
R P P Smith
Ralph M Smith
Sherwood & Judith Smith
Susan P Smith
Joseph C & Joanne Smyth
Oscar H & Barbara M Soule
Samuel D Soule
Pat Spears
Mrs Donald Spencer
Jess & Hanna Spielholtz
Donald W & Doris B St Louis
Karen & Greg Steinke
Bruce & Mary Stevenson
Louis & Helen Stewart
D Crable-Sundmacher

Philip B & Doris Swain
Daniel R Swanson
John & Jane Sylvester
Larry & Carol Tate
Frank & Karlene Taylor
Joan & Mort Thomas
Joann Thompson
Robert Byrd Thompson
John W & Helen B Tipton
Jean L Towne
Dale & Verna Tresner
Jacqueline Trimble
University Of Washington
Jolene Unsoeld
Bud & Kathryn Valentine
Gretchen A & Derek R Valley
Irene & Lloyd Van Etta
David E Wagoner
James D & Helen Walker
Susan Washburn
Washington State Medical Assn
Wesley Wehr
Sidney & Patricia Matheny White
Walter B Williams
Julie Wittrock
Hal Wolf
York Wong
Lazar Wracsaricht
F L Wyatt
Don & Jean Wynn

Corporate & Foundation Gifts & Grants

American General Life Ins Co
Ashland Oil Foundation, Inc
The Boeing Company
Conwed Foundation
Crown Zellerbach
Deloit Haskins & Sells Fdn
Dennison-National Company
FMC Foundation
Ford Motor Corporation Fund
Gannett Foundation, Inc
General Telephone & Electronic
The Saul & Dayee G Haas Fdn
Hewlett-Packard
J T & T
J C Penney Co, Inc
K & D Agriculture Inc
Oceanic Associates
Puget Sound Power & Light
Raimier National Bank
Reader's Digest Foundation
Reynolds Metals Company
SAGA Corporation
Safeco Ins Co
Sea-First Foundation
Shell Oil Co
Signode Corp
South Sound National Bank
Sperry Corporation Foundation
Time Inc Matching Grants Prog
Traveler's Insurance Co
TRW Foundation
Unigard Insurance Group
Washington Mutual Savings Bank
Western Electric Co, Inc
Weyerhaeuser Company Foundation
Xerox Corporation

Gifts-in-Kind

Marv Bondarowicz
Douglas James Canning
Gary Chastain
Norman & Lee Ann DeShon
Robert Filmer
Vicky Draham Friend
Ulrich Fritzsche
Gordon Gilkey
Robert Graves
Donovan Michael Gray
Leslie Young Harvill
Craig Hickman
William Donald Hillman
Julian & Josephine Jenner
Celia Phillips
Richard Rowan
SAGA Corporation
Charles Schiff
Richard & Janet Schwartz
D G Smith
Wesley Wehr
Sidney & Patricia Matheny White
Don & Jean Wynn

Gifts of Art

Marv Bondarowicz
Norman & Lee Ann DeShon
Dr & Mrs Ulrich Fritzsche
Gordon Gilkey
Robert Graves
Donovan Gray
Young Harvill
Craig Hickman
Bill Hillman
D G Smith
Wesley Wehr

Special Restricted Gifts

Jeremy & Janet B Anderson
Clara Bell Angle
George F & Jane Ansley
Eleanor Aspinwall
Richard Dean Atkins Jr
Marcheta K Bean
Marjorie C Benner
Elane Bills
Marv Bondarowicz
Lester P & Pansy G Bray
James D & Linnea Bremner
J Arnold & Judy Bricker
Carol Britton
Bronwyn V Brothen
Beth & Lee L Buzzard
Lynda Marie Caine
Douglas Candland
Donald W & Malpina M Chan
W Ian & Helen Christopher
Frederick Cohen
Jon & Nina Collier
Jack M Crabs
Dennis A Craig
Robert B & Irene A Dana
Raul Davila
Norman & Lee Ann DeShon
Elizabeth Diffendal
Wilbur Downs
Elizabeth Eloise Eckert
Richard & Pat Emerson
Marilyn Ruth Erickson
Judith C Espinola
Daniel J & Nancy Evans

A Daniel & Jessica Feldman
Robert Filmer
William Almon Freeburg, Jr
Jill Fleming Freeburg
Ulrich Fritzsche
Herbert & Carol Fuller
Holly Gadbow
Patricia Gallagher
Gannett Foundation Inc
Volney Gaudette
Herb Gelman
Ellen & George Ghilarducci
Gordon Gilkey
Helen Gleichman
Alan Goldberg
Fred Goldberg
Laura R Gorton
Robert & Lois Gottlieb
Robert Graves
Donovan Michael Gray
Chauncey L & Marion R Griffith
Gladys Guilbert
Jeff Jay Gumeringer
Sarah Elizabeth Gunning
The Saul & Dayee G Haas Fdn
Kenneth & Britta Jo Hammond
Maurice & Betty Harmon
Mary Ann Hart
Leslie Young Harvill
James Haseltine
Creighton E & Florence E Hay
Robin & Michael Heaney
Craig Hickman
William Donald Hillman
John A & Mary Q Hommeyer
John J Hoover
Donald & Gene Hopkins
Frank G & Lois Horino
Thomas F Hornbein
Cynthia Joy Howell
Marcia Isonia Howery
Dan & Mary Hughes
Will Humphreys
Amy Beth Hunter
Julian & Josephine Jenner
Bernard & Mary Johansen
William & Paula John
K & D Agriculture Inc
Charles A & Carolyn M Keck
Betty J Kennedy
Judy R Kirk
Mark & Joan Klyn
Kreiselheimer Foundation
Elizabeth Kutter & Robert Ronzio
Sidney Lasell
Heather M Leithoff
Linda G Lux
Jean Mandenberg
Jack Massey
Charles J & Barbara McCann
James R & Kathleen A McDowell
Ward C & Alice Miles
Christal & Ed Miller
Richard P & Karen R Mills
Darrell & Kitty Mintz
Lawrence & Janet Moniz
Melvin Moon
Native American Studies Program
Jerome E & Eleanor J Neal
William & Magdaline Nearn
Daniel W Nebert
Jillian Nelson
Leonard Nelson
Warren & Nan Netherland
Royal M & Irma M Nyba
David Olson
Oly Assn Prof Mortgage Women
Ruth Panter
Kenneth & Marianne Partlow
Richard Theodore Pass
John & Barbara B Perkins
Paul M Perry
Mary Barbara Petersen
Celia Phillips
Eric & Marge Phillips
R G Phillips
Raimier National Bank
Robert & Ruthe Lyons Ramirez
Stuart M & Joann I Reed
Theodore Hudson Romaine
Rotary Club Of Anacortes
Richard Rowan
SAGA Corporation
Safeco Ins Co
Charles Schiff
Lynn Schrader
Pablo Schugurensky
Richard & Janet Schwartz
H H & Mary K Skinner, Jr
Barbara Smith
D G Smith
Sherwood & Judith Smith
Susan P Smith
Samuel D Soule
South Sound National Bank
Daniel Dee Spencer
Josephine M Stack
Bruce & Mary Stevenson
Jesse & Mildred K Stice
Donald G & Edna L Tinney, Sr
Jean L Towne
University Of Washington
Jolene Unsoeld
Gretchen A & Derek R Valley
John Edward Vasquez
Pearl D Vincent
Herbert S Walfish
James D & Helen Walker
Petrina Lynn Walker
Phoebe C Walker
Susan Washburn
Washington Mutual Savings Bank
Washington State Medical Assn
Wesley Wehr
Jo Anne Welch
Weyerhaeuser Company Foundation
Sidney D & Patricia Matheny White
Kale A & Helen L Williams Jr
Walter B Williams
Jo Ann Wright
Byron & Bernice Youtz

Comedy, Dance, Japanese Festival Among Upcoming Events

November

16
"A Spark of Fire," a one-woman show featuring Kathleen Worley as Virginia Woolf, 8 p.m., Recital Hall, Communications Building... free...

20
Turkey Trot, a 2- to 7-mile race for your Thanksgiving supper. Registration begins promptly at 9:30 a.m., with the race set for 11 a.m. from the front of the Evans Library. Men and women winners in six age categories will take home a turkey for first place, chicken for second, Cornish game hen for third, or one dozen eggs for fourth. Every finisher wins a Survivors ribbon... Registration is \$4.

22-26
Thanksgiving holidays; no classes. Campus completely closed November 25 and 26.

30
Los Angeles comedian Franklyn Ajaye, co-star of films, "Jazz Singer" and "Car Wash," and Tonight Show regular, headlines an evening of comedy, 8 p.m., Evans Library lobby... Tickets: \$3.75 general, \$2.75 students and senior citizens.

December

3
Kinetics, a six-member repertory dance team and resident performing company at Seattle's On The Boards, presents what reviewers predict will be "a dynamic, energizing evening of dance, with solid, moving choreography," 8 p.m., Experimental Theater, Communications Building... Tickets: \$4.50 general, \$3.50 students and senior citizens... Reservations, 866-6070.

4
Solos/Duets performed by Seattle modern dance performers Christian Swenson and Helen Walkley in a performance that showcases "a nearly magical precision of timing and motion, enriched by boundless energy and commanding stage presence," 8 p.m., Experimental Theater, Communications Building... Tickets: \$4.50 general, \$3.50 students and senior citizens... Reservations, 866-6070.

7
Oregon Shakespeare Festival returns to campus, presenting a traveling duo who stage a potpourri of the great bard's works, plus selections from other classical and contemporary pieces, 8 p.m., Recital Hall, Communications Building... Tickets: \$4 general, \$3 students and senior citizens... Reservations, 866-6070...

22-26

Campus closed for Christmas holidays.

January

16
Tribute to Japan: A Celebration of Cultural and Economic Exchange Between Japan and Washington, 1-5 p.m., Evans Library and Lecture Hall One, featuring films provided by the Japanese consulate of Seattle, lectures on Japan by Evergreen exchange professors, special art displays, dance performances and more, details to be announced. For information, call 866-6128 after December 1.

26
Evergreen faculty historian Susan Strasser discusses her new book, *Never Done: A History of American Housework*, which the Los Angeles Times has reviewed as "a work of genius," noon, College Activities Building, room 110... free... Reservations, 866-6128... Sponsored by Evergreen College Community Organization and Friends of the Evergreen Library.

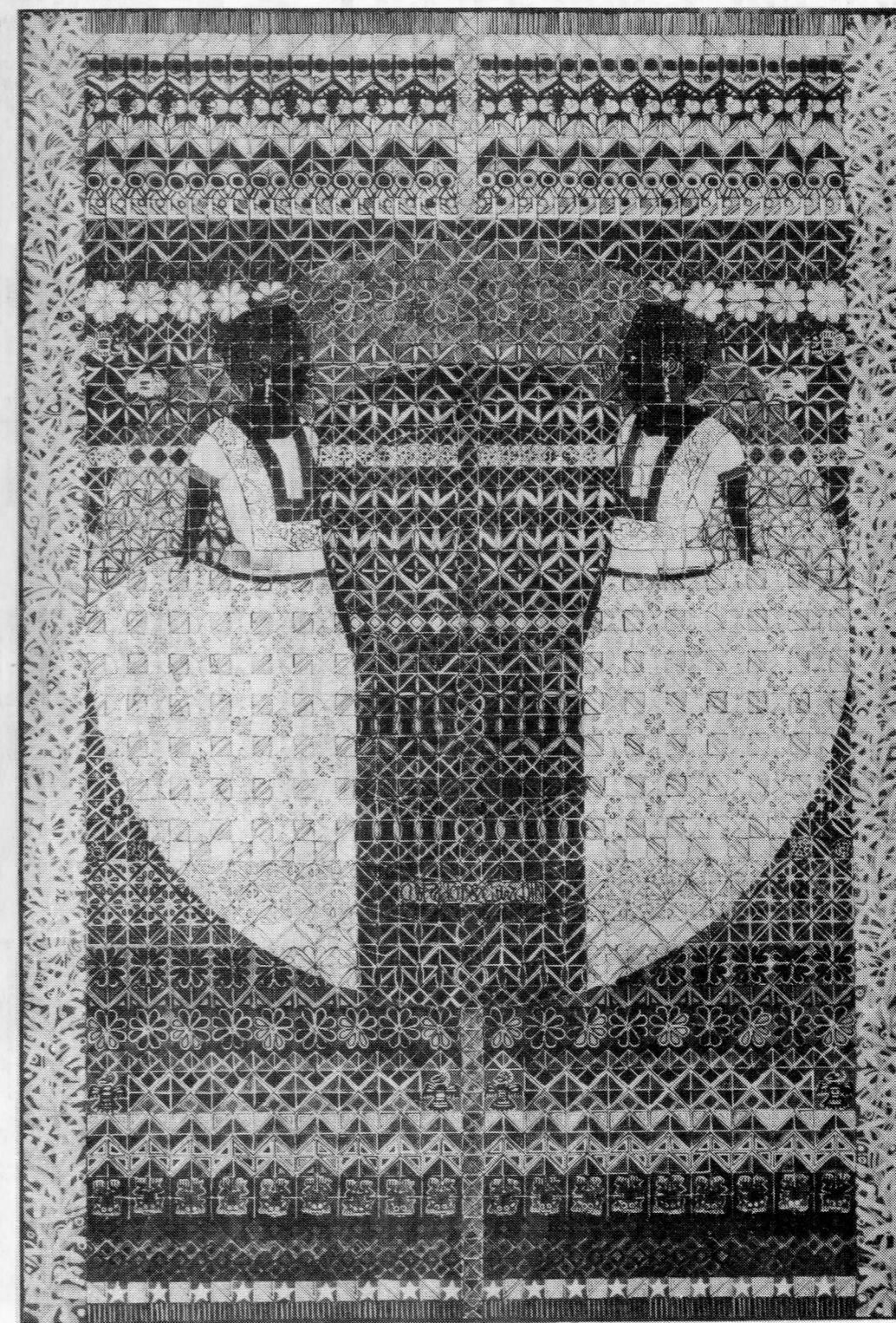
February

15
"Lysistrata Numbah!" presented by Spiderwoman Theater of New York, an all-female troupe which has created this contemporary version of Aristophanes' classic, "Lysistrata," exploring the power of men over women, 8 p.m., second floor Evans Library Lobby... Tickets: \$4.50 general, \$3.50 students and senior citizens... Reservations, 866-6070.

March

3-6, 10-13
"Pippin," a highly theatrical, energetic and bawdy musical based (loosely) on the life of Charlemagne's eldest son, 8 p.m., Thursdays through Saturdays, 3 p.m., Sundays, Experimental Theater, Communications Building... Tickets: \$5 general, \$4 students and senior citizens... Reservations, 866-6070.

Chicano Art



Alfredo Arreguin
Celebracion, 1982
63"x43"
oil on canvas

Also Inside:

New Greeners
Share Views
of Campus

Reunion '82

And Other
Alum News

Painting shown at a recent exhibit in the Evergreen Galleries. Paintings and small sculpture by Alfredo Arreguin were shown, along with paintings by his wife, Susan Lytle. See page 4.