



TIPTON NAMED EVERGREENER OF THE MONTH

Ralph Tipton, our Greener of the Month for December, was first attracted to the Northwest and Evergreen by the greenery and the clean air, but it's the people and the job which have kept him here for the past 14 years.

Tipton is a facilities operational maintenance specialist and is responsible for the upkeep and repair of the mechanical and electrical system of the college. This equipment controls the start and stop functions for all fans, room temperatures, steam and water systems and fire and security alarm systems.

The Secret Quacker Committee, in making the nomination, said "Ralph knows the ins and outs of the monitoring system better than anyone. His knowledge and dedication help make the college safe and comfortable."

"This is one of the best jobs I've ever had in my life," Tipton said. I like it. I like the things that I do because there's never a dull moment--there's always something different. This isn't a routine job."

Tipton was born in Oklahoma, moved to California and worked in an electronics plant before coming to Olympia. "I remember the date I first came to work for the college," he said. "It was August 28, 1972. Almost from the first day this job was fascinating and it still is."

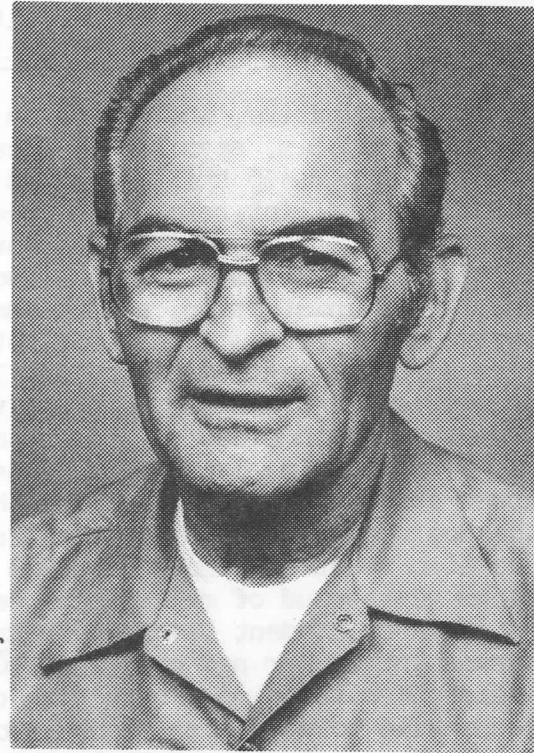
He said the hardest part of the job is dealing with the frustrations caused with not having enough time to get everything done that needs doing. "I guess everyone at the college feels like that on occasions," he said.

A fisherman and a hunter, Tipton is also an avid reader and devours whatever information he can get his hands on. He is currently reading everything he can on John D. Rockefeller, "mainly because he was one of the main influences on our country and how it is today."

He is also a football fan but favors the Raiders. "I guess I developed a loyalty to them when I lived in California," he said. Tipton does like to keep his eye on one Seahawk though--Steve Largent. "He and his family are from Tulsa and I'll root for anyone as nice as they are."

Tipton said he feels fortunate to work at Evergreen. "I like the people I work with, I like my job, and I like the feeling of community here. It's a great place to work."

So, the next time the air conditioner comes on, the room temperature is just right or there's hot water available, think of Ralph Tipton. Congratulations, Ralph and thank you.



NATIVE AMERICAN STUDIES DTF BEGINS WORK WITH "WORLD VIEWS..." SEMINAR

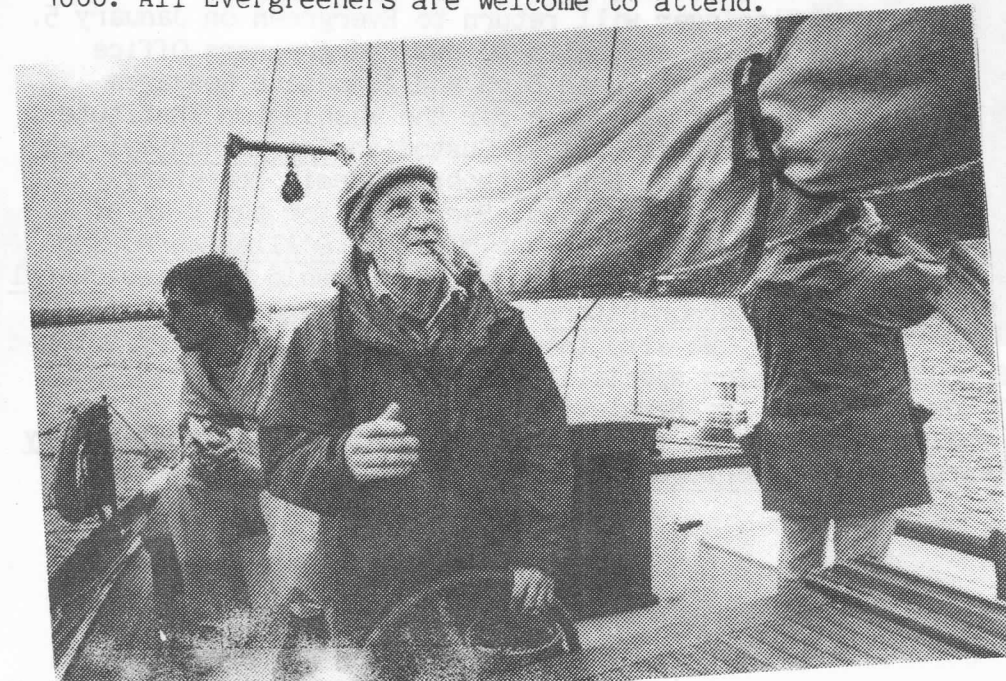
An institution's commitment to minority studies, writes Barre Toelken in "World View, The University Establishment and Cultural Annihilation," is often measured "in terms of the dollar commitment to special programs...and by the grant dollars an institution attracts from the government..."

The Native American Studies DTF is determined to take a much deeper look at such programs. "Our strategy is not to focus on evaluating the Native American Studies Specialty Area," says Faculty Member Russ Fox, who chairs the DTF, "but to examine how Evergreen responds to the needs of Native American students and the Indian nations in our community, and to clarify how we structure opportunities for students to pursue individualized learning." Provost Patrick Hill reports that the charge to the DTF is still in a draft stage, pending further input from the Agenda Committee about faculty concerns with the NAS Program.

The DTF convened with a November 12 seminar on "World View..." with Toelken, a Utah State University professor who was on campus to discuss intercultural relations. DTF members began their exploration by sharing their cultural backgrounds.

"There's a lot of diversity in the group," says Fox. "Everyone has a sincere desire for collaboration." The DTF's next step, he says, "is to look at ourselves as resources and identify what we don't know and then to acquire that knowledge through interviews, questionnaires and campus-wide discussions."

DTF members are: staffers Barbara Cooley, Rita Cooper and Mary Huston; students Kimberly Craven, Bob Harris, Nancy Koppelman and Michael Lane; Faculty Members Thad Curtz, Lucia Harrison, Dave Hitchens, Yvonne Peterson, Rita Pougiales, Sandra Simon, Pete Taylor and Gail Tremblay, and alumni Gary Wessels and Jutta Reidiger. The DTF meets Wednesdays, 1:30 to 5 p.m. in Library Lounge 1600. All Evergreeners are welcome to attend.



AVAST--Student Andrew Poultridge and Faculty Member Bob Sluss take the Seawulff up Budd Inlet. Sluss and faculty shipmates Byron Youtz and Rudy Martin have made the Seawulff a primary part of the Core Program, "Exploration, Discovery and Empire." A seven-week voyage is planned for Spring Quarter.

TRIBUTE TO JAPAN SLATED FOR JANUARY 18

A committee of Evergreeners and community members is hard at work, planning the Fifth Annual Tribute to Japan, slated for Sunday, January 18, from 11 a.m.-5 p.m. The event promises to enchant participants with old favorites such as the Namukai Taiko Drummers, authentic tea ceremonies, a landscape garden and delicious foods as well as new attractions such as a sake garden, an exquisite display of Japanese kites and panel discussions featuring Evergreen students. The committee is also planning a full slate of children's activities including aikido workshops, origami and storytelling.

The Tribute is cosponsored by the Consul-General of Japan in Seattle, the Olympia chapter of the Japanese-American Citizen's League and Evergreen. Participating organizations include the Asian-Pacific Isle Coalition, EF Language, College, ECCO and the Olympia/Yashiro Sister City Committee. Co-chairs Donnagene Ward, Larry Stenberg and Keith Eisner invite all Evergreeners interested in participating to contact them at ext. 6192 or ext. 6128.

EVERGREENERS IN THE NEWS

If you're in Bellevue, don't miss the magical, mystical "Celebration: Especially for Children" exhibit at the museum in the Bellevue Square. Among other delights, you'll find two very fine paintings by Faculty Member Susan Aurand. The show runs through January 4.

If you're traveling to the Los Angeles area in the next month, you can view the work of another Greener artist--Faculty Member Jean Mandeberg. Described as the "most comprehensive metal art show in the country," the Contemporary Metals USA II Exhibit runs through January 17 in Downey, California. Mandeberg's work was one of 156 pieces chosen out of over 500 entries from across the country.



Photo by Michael Polli

AN ANSWER TO THE DOGS-ON-CAMPUS PROBLEM? Conan, pictured above, enlivened a quiet Thanksgiving week.

Faculty Member Sally Cloninger is in Bangladesh contributing to a workshop sponsored by the Asia-Pacific Institute for Broadcasting Development. The workshop, entitled "Planning and Production of Television Programs for Women's Development" includes women broadcasters from India, Iran, Sri Lanka, Nepal and Afghanistan. Cloninger will return to Evergreen on January 5.

We say hello to new Evergreeners Office Assistant Susan Bird and Associate Research Analyst Jane Hope for the Washington Institute for Public Policy; Custodian Cheryl Hadley; Lab Technician Dan Fritsch; Academic Secretary Barbara Reichmann; Secretary for the Dean of Student Development Michelle D'Allessandro and Coordinator of Student Leadership Programs Cheryl Henderson-Peters (see story, page 3).

We also thank Ken Balsley, temporary information specialist, for his help with this issue of the Newsletter.

We say goodbye and thanks to Custodian Gary Greenwood and Secretary Claire Kuhns.

HENDERSON-PETERS READY TO HELP STUDENT LEADERSHIP

A familiar face is in a brand-new position at Evergreen. The college's first Coordinator of Student Leadership Programs is Alum Cheryl Henderson-Peters '82.

As part of the Student Activities team, she'll provide support, guidance and information to student coordinators. Henderson-Peters uses a key word to describe her goals--"empowerment." "The bottom-line motivation for creating this position," she adds is that, "Stone Thomas and Gail Martin want strong student programs."

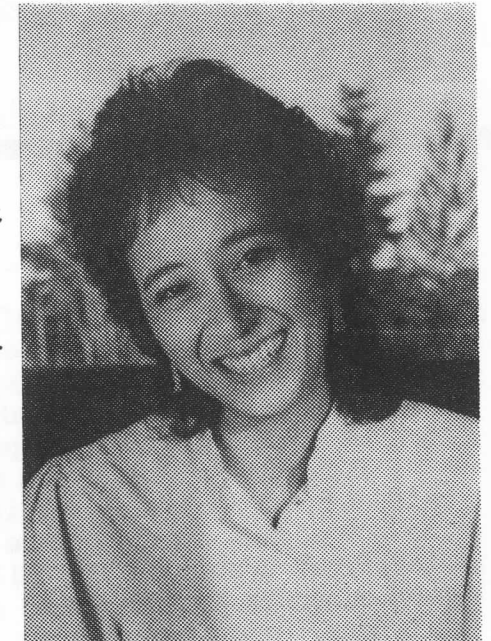
The Yelm native, who served on the 1982-83 provost searches, says she'll focus on developing student leadership skills such as how to facilitate meetings, conflict-resolution, mediation, identifying goals and objectives and how to negotiate.

"I see myself as a liason between students and the administration, as someone who will speak the words of students that may not be listened to. I've also been an administrator. I know the 'ropes,' I know the constraints and priorities that administrators have to deal with, so I think I can listen to and understand both sides of student-administration disputes."

Since leaving Evergreen, Henderson-Peters was the coordinator of the Sexual Abuse and Treatment Project for the Skokomish Indian Tribe. She presently sits on the Board of Directors for the Washington Coalition of Sexual Assault Programs. She also revisited campus often as a speaker for the Asian-Pacific Isle Coalition. "I am very proud of my Filipina heritage," she says.

Dean of Student Development Ernest "Stone" Thomas agrees with Henderson-Peters assessment of her new position. "Cheryl will work with student coordinators to assist them to be more effective communicators. Our major objective is to be more responsive to students' request for enhancing leadership. I'm confident that she'll be a valuable asset to the Evergreen learning community."

All Evergreeners who'd like to discuss student leadership, can find Henderson-Peters at CAB 305. Welcome back!



JACKSON TO BE HONORED AT DECEMBER 10 TRUSTEES MEETING

Ceremonies to honor outgoing Trustee Thelma Jackson and to welcome her replacement Kay Boyd, will be held during the Board of Trustees meeting at 11:45 a.m. on Wednesday, December 10.

Jackson served five-and-a-half years on the college's Board of Trustees including a one-year term as chairman. "My years on the board were a time of growing and learning and were very fulfilling," Jackson said. "It was a critical period at Evergreen and I feel good about what I consider to be a positive contribution on my part." Jackson said she will continue to be involved with the school and looks forward to great things in the future.

"I'm also pleased that they appointed Kay Boyd to fill my seat," Jackson said. "She's from Thurston County, she's an alumni and she'll make a great trustee."

The Board of Trustees meeting begins at 9 a.m. in Library 3112 and is open to the public. All those who wish to thank Jackson for her years of service are encouraged to attend.



WHITTAKER NAMED EVERGREENER OF THE MONTH

The Secret Quackers Committee has selected Administrative Assistant Donna Whittaker as Greener of the Month for November. A note slipped under our door read, in part, "Donna is one of Evergreen's unsung heroines. She is one of the key sources of energy that has made and continues to make us successful."

Greeners don't have to look far to see the effects of Whittaker's work. All the equipment in LAB I and II, and the Communications and Seminar buildings was ordered by Whittaker--to the tune of nine million dollars.

Whittaker, who came to Evergreen in 1972, flashes a big smile when asked about the early days of planning for the yet-to-be-built facilities. "It was great. We were shaking and moving. Everything was new and wide-open. It was exhausting work but fun!"

While Whittaker takes a phone call, her office mate, Susan McNeil, interjects that, "Donna's a behind-the-scenes trouble-shooter.

Veteran staff and faculty members know to come to her with the tough orders. She's an endless resource."

McNeil's point is dramatized when a harried-looking staff member bustles into the office with an order that "has to go out today," as the prices will be raised nationwide by \$50 the next day. He rattles off addresses and phone numbers. "Got it," replies Whittaker, in a calm "no problem" tone.

"I couldn't manage the area without her," says Director of Lab Facilities Walter Niemiec. "Donna is absolutely a great employee. She places the orders for all academic supplies and her persistent attention to budget, timelines and needs is invaluable. I consider her the heart of the LABs."

Whittaker, who was born and raised in Lacey, describes her pre-Evergreen occupation as raising her three daughters, Lynn, Kathleen and Sandy, who has since changed her last name to Greenway and now works as a program manager at the Recreation Center. When not solving Evergreen's equipment problems, Whittaker enjoys playing with her granddaughter, Taylor, and reading mystery novels--many of which she figures out long before the last chapter. Past activities include owning horses, river-rafting and deep-sea diving. Asked for a future dream, she says, "Travel. I know everybody says that, meaning exotic trips to Europe or Asia, but I'd just like to drive around the U.S. and get to know this country."

As for the present, we encourage Evergreeners who haven't met Whittaker to "drive on down" to LAB I, 057, and get to know one of the college's "unsung heroines." Congratulations, Donna, and thank you!

The Evergreen State College

November 14, 1986

"WOMEN OF SWEETGRASS, CEDAR AND SAGE" OPENS TOMORROW

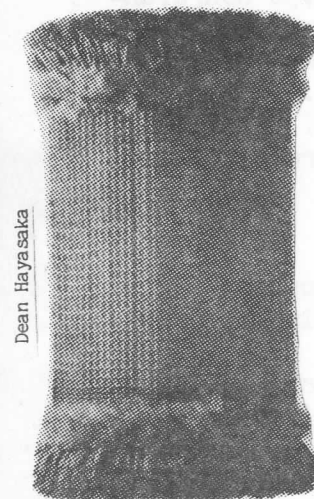
"Sweetgrass, Cedar and Sage are among the small, fragrant and useful things Native American women send each other in letters, or bring when they come to visit...they are redolent with a sense of place or 'home.'" So writes art critic Lucy Lippard in "Double Vision," an essay in the catalog that accompanies the "Women of Sweetgrass, Cedar and Sage" exhibit.

Evergreeners will have an opportunity to experience many fascinating variations of the "sense of place or home," when the exhibit concludes a two-year, cross-country tour at the college. Opening in Gallery 4 on Saturday, November 15, the exhibit features works by 30 Native American women artists that include painting, beadwork, photography, quilts, jewelry, masks, pottery and more.

Faculty Member Gail Tremblay, whose works are featured in the exhibit (see picture at left), will speak at a reception for the artists held at 7 p.m. in the Library Lobby on Monday, November 17, in conjunction with Indigenous Peoples Day.

The artists, representing tribes from all regions of the country, defy easy categorization. "Indian women artists," writes Lippard, "are affirming their diversity while refusing double cultural confirmation." On one hand, she points out, contemporary Indian artists have to "combat the romanticization of the Indian past as well as the misplaced purism of non-Indian anthropologists, who are unable to accept innovation in Native arts." At the same time, there is the struggle to preserve their cultural self-identity in the midst of the white mainstream.

"Homage to Oscar Howe"
by Gail Tremblay



Dean Hayasaka

"...we respond to our visual history while crossing into new territories," writes artist Jaune Quick-to-see Smith in the exhibit catalog, "Transcending tradition, Indian women have gone on to set new standards for Indian art and have shown that the work of Indian women belongs in the mainstream of world art history."

Admission to the "Women of Sweetgrass, Cedar and Sage" exhibit is free and open to the public. Gallery 4 hours are noon to 6 p.m. on weekdays, and 1-5 p.m. on weekends.

Also on exhibit in Gallery Two are drawings and sculptures by regional Native American artists Rick Bartow and Evergreen Faculty Member Larry Beck. Gallery 2 hours are: 8:45 a.m.-10:45 p.m., Monday through Thursday; 8:45 a.m.-6:45 p.m., Friday, and 11 a.m.-6 p.m., weekends. Both exhibits run through December 10. Complete details are available by calling ext. 6062.

"Beaded Tennis Shoes" by
Imogene Goodshot



Richard Wiestrup

TRUSTEES APPROVE HOUSING PLANS, ENROLLMENT DEPOSIT POLICY REVISION

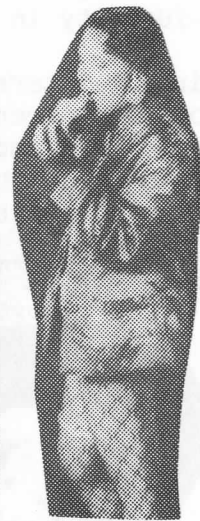
At their regular meeting on Wednesday, November 12, the Board of Trustees authorized the selection of a consultant to prepare a Request for Proposal (RFP) that will be used to select a contractor to design and build new on-campus housing. The ORB Organization, a Renton firm, is slated to complete the RFP by mid-December. The college will then accept bids on the proposal and select a contractor, who will finance, design and complete construction by September, 1987. The new housing will be leased to Evergreen for the next 25 years, after which time, the buildings will revert to the college.

Housing Director Jeannie Chandler reports that the plan calls for the construction of four buildings between the present dorms and the mods. Each building will most likely be three stories high. A total of 200 new beds will be available. The total project is expected to cost 3.2 million dollars. Chandler says a community forum on the project will be held next month.

The board also approved a revision of the enrollment deposit policy. The college is now authorized to set a deadline for the payment of a \$50 nonrefundable deposit from students admitted to the college in order to confirm their intention to enroll. The deposit will be applied toward tuition and fees. Under current practice, students may withdraw their deposits at anytime. According to Dean of Enrollment Services Arnaldo Rodriguez, the new policy will alleviate the significant workload caused by refunds and will be a better prediction of enrollment as it requires students to make a firm commitment.

RECYCLING FORUM SCHEDULED FOR NOVEMBER 20

Evergreeners recycle over 30,000 pounds of paper a year. Details on that fact and more will be presented at 12:30 p.m., Thursday, November 20, in Library 2204. Recycling Coordinator Kirk Haffner will discuss Evergreen's nine-year-old recycling program, and will provide information on where, what, how and why to recycle. Haffner reports that the college currently recycles aluminum cans, glass and paper, while envelopes with adhesive stickers or cellophane and NCR paper are not recyclable. Complete details are available at ext. 6784.



MENDOZA DE SUGIYAMA LEAVES FOR SOUTH AFRICA

Special Assistant to the President Margarita Mendoza de Sugiyama leaves this Monday for South Africa on an educational, fact-finding mission sponsored by the YWCA. She and 15 other women from across the U.S. will study South Africa's health, nutrition, employment, economy, housing and education. The group will return to New York on December 5. Upon her return, Mendoza de Sugiyama will be available to speak to groups on- or off-campus. We wish you well, Margarita.

EVERGREENERS IN THE NEWS

Condolences to Faculty Member Rob Cole who suffered a severe ankle fracture on Saturday, November 1, on a grassy slope at Seattle Community College. As one of his students wrote, "Your accident was a case of too much motion and not enough matter." Cards and get-well messages to Cole can be sent to LAB I.

Miles Wayne Clemens surprised Information Services Director Mark Clemens and his wife, Karen, by arriving a month early on Wednesday, November 5, weighing in at six pounds, plus. Clemens reports that the youngest addition to his family is at home, doing well and resting up for the next Catalog deadline. Congratulations!

ARD, a West German television station, will be on campus Tuesday to film part of a documentary that will feature Faculty Member Tom Grissom and other scientists who have left the U.S. defense industry.

Faculty Member Alan Nasser plays a psychiatrist in "Lunch Hour," a play produced by the Olympia Little Theater. Performance dates are November 21, 22, 28 and 29, and December 4-6 and 11-13. Call Nasser at ext. 6759 for times and prices.

COSTUMED CAMPUS CHARACTERS CUT CAPERS

Yep, pictured below are your fellow Greeners on goblin day. From left to right: Bunny Carolyn Bentler and Groucho Stan Marshburn; Adventuress Alice Patience and forever-young Sharlene Lugenbeel. In the next photo, Grande Dame Ellie Dornan, Superwoman Kim Gregory, Dust-Em-Up Debra Garrington and Lady Night Sue Washburn are in the front row. Behind them are Clowns John Gallagher and Larry Stenberg. Sainly Debbie Davies chats with Cat Woman Beth Hartmann, while Princess Jan Lambertz ignores Gunman Al Warber. Schoolmarm Shirley Walters ponders the madness.



EVERGREENERS IN THE NEWS

Congratulations to Faculty Member Terry Tafoya, who was named Educator of The Year by the MoKakit Indian Research Association, a Canadian and U.S. organization of native peoples who hold graduate degrees. The association, which sponsors research and publishes a journal, selected Tafoya for the award in recognition of his work for the U.S. and Canadian governments in the area of bilingual education.

Congratulations also go out to Tacoma Adjunct Faculty Member Sally Riewald, whose article, "Life Stories on Disk," has been published in the September issue of Instructor Magazine. The article details Riewald's successful results of an autobiography activity she created for foreign-born elementary school students. Copies of the article are available at Information Services, Library 3122.

It took ten days, 281 pledges ranging from \$2 to \$200, and the time and effort of over 140 volunteers, but when it was all over last week, KAOS-fm Radio reported a record-breaking \$6566 raised for the annual Membership Drive. This represents a \$1198 increase over the 1985 total of \$5368. "We're very grateful to the community for its strong support," says Station Manager Michael Huntsberger.

Hello and Goodbye: We welcome Custodians Geof Seland, Gary Greenwood, CPJ Advisor Susan Finkel, and Office Assistant Suzanne Hall. We say goodbye and thanks to Custodians Hien Dang and Hieu Dang.

WEEKEND WARRIORS TAKE NOTE

by Doc Stretch (pictured below)

Winter's coming, the clocks have been set back, and it's getting dark earlier. There's no longer time for those nice walks after dinner. But waiting until the weekend to exercise leaves you sore and stiff til Tuesday.

Here's an idea for relief. Dr. Bryant Stamford of the Exercise Physiology Lab at the University of Louisville has developed a "Weekend Warrior" fitness program for those who don't exercise regularly, but want to stay in shape with an occasional hike, bike ride or tennis game.

The program involves alternating 50 steps each, of walking and jogging every Saturday and Sunday, beginning with just one half-mile (that's out to Parking Lot C and back). This activity won't burn off fat, or significantly increase your aerobic capacity, but it will help maintain a basic level of fitness that will relieve those sore muscles. If you'd like more details on the "Weekend Warrior" plan, call the Campus Recreation Center at ext. 6530. Or better yet, walk over and pick one up!



The Evergreen State College

October 31, 1986

PLANS BEGIN TO CELEBRATE 20 YEARS OF SUCCESS

"I'm extremely happy with the results; they've done a tremendous job out there," says Gordon Sandison, former state senator from Port Angeles who now hails from Olympia. The "results" he speaks of are the accomplishments of Evergreen over the past two decades, while "they" are us--the many faculty, staff, students, alumni and community members who have helped the college to grow.

In 1966, Sandison was selected to chair the Temporary Advisory Council on Public Higher Education, formed by the Legislature to determine the best location for a new college. The group concluded Southwest Washington was the largest unserved area in the state and chose Olympia to be the home of the four-year public college, Washington's first in 72 years. Less than a year later, a bill cosponsored by Sandison became law on March 1, 1967, breathing life into Evergreen.

Efforts are underway to celebrate those two decades of success. Chaired by Director of Community and Alumni Relations Larry Stenberg, the Twenty-Year Anniversary Planning Team is meeting weekly to plan the details of a Founding Festival. Many details of the anniversary celebration are in the planning stages. Activities will last from three days to a week around the founding date of Sunday, March 1, 1987. Even the name of the event, Founding Festival, has yet to be officially approved. But the Planning Team's purpose is clear:

"To acknowledge, salute and celebrate 20 years of achievement in and contributions to the field of higher education through a series of educational, cultural and social events and exhibits...which highlight the significant achievements of the college from the early planning through present times and look into the future, and honor those who made a noteworthy contribution to the founding, the academic and operational structure, and the successful evolution of the college."

A sampling of projects and activities under consideration are a banquet featuring speakers and honored guests, visual exhibits depicting different aspects of Evergreen's history, a campus-wide open house, performances either on campus or at the Washington Center for the Performing Arts, a retrospective of student and faculty art and other works, a showcase publication about the college's first two decades, and a grand finale reception and dance.

If you have ideas for the Twenty-Year Anniversary Planning Team, and especially memorabilia from Greener days gone by, please contact Chairperson Larry Stenberg at CAB 214, ext. 6192. "It really is astounding to me," Stenberg says, "that Evergreen has received so much national acclamation in the face of having to literally fight for survival for so many years. We need to honor the people who were and are dedicated to supporting that cause. And there's one more reason to celebrate," he adds. "We deserve it."



PLACEMENT BACK ON TRACK--94%

After a one-year dip, Evergreen's graduate placement rate is back up to 94%, according to a survey of 1983, '84 and '85 graduates conducted by the Office of Career Development.

"A significant number of 1985 graduates who reported said they searched very actively for jobs, which largely accounts for a 20% increase in this year's placement level," says Joyce Weston, director of Career Development.

Last year, the annual survey showed that 74% of 1984 graduates had either found employment, entered graduate school or were engaged in other pursuits of their choosing. That compared to an 88% placement rate for the Class of 1983 and rates in the 90th percentile for previous years.

Other survey results for 1985 graduates revealed a 59% placement rate in counseling and social services jobs, the top career interest of 12% of the class; a 2% decrease in graduate school acceptance, down from a 5% increase a year ago; and that 77% of the 653-member class is residing in Washington.

EVERGREEN WELCOMES AT&T COMPUTER GIFT

Evergreen will be the recipient of computer equipment valued at over \$300,000 from AT&T Information Systems. Part of this year's AT&T University Donation Program, the award is the largest of its kind for any college and university in Washington.

One reason for that may be that "Evergreen submitted the highest-rated application in AT&T's Northwest region," says Don Chalmers, associate director of Development for corporations and foundations.

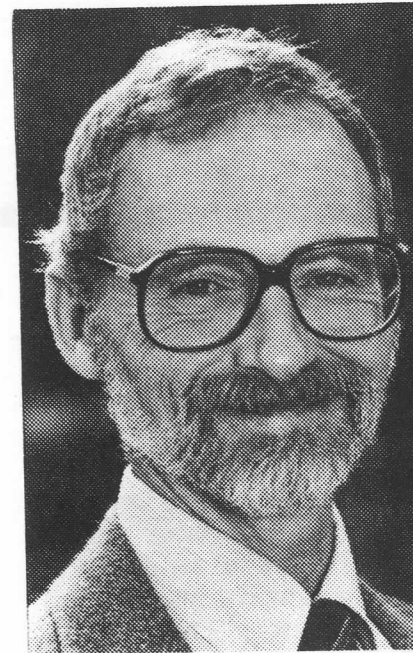
The major part of the acquisition is three 3B2 Unix-based minicomputers, two of which will be installed in the Microcomputer Center, while the other will be used in the Computer Applications Lab. The minicomputers will link microcomputers which are already in place to peripheral devices such as printers and plotters, making it easier for students and faculty to use the college's computing facilities. The award also includes 12 intelligent Unix work stations, additional printers, software, modems and installation of the system, which is scheduled to take place this quarter.

FALL FOUNDATION GRANT AWARDS ANNOUNCED

The Evergreen Foundation Board of Governors has allocated \$5000 this year for grants to students, staff and faculty members for specific projects and activities. Seven grants have been awarded this quarter, reports Director of Development John Gallagher.

Two student theater projects, one by Tom Geha and the other by Tom Kolba and Kirk Horning received funding for their productions which will be staged at the college. The board also approved funding for support of the 1986-87 Evergreen Expressions brochure and to support expenses in conjunction with planning Evergreen's Founding Festival (see story, page 1). Funds to acquire topographic maps and other materials were also allocated for a year-long project on the ecology of Capital Forest by student Rhys Roth. The board also approved monies to help cover the costs of a catalog for an upcoming Evergreen Galleries exhibit on contemporary Native American Art.

The board approved \$2943 for funding, leaving \$2507 for additional grants this year. Applications must be in writing and delivered to the Development Office, Library 3114, by January 9 or April 1, 1987. Applications arriving after these dates will be held until the following quarter. Call ext. 6565 for details.



NEW LIBRARIAN HAPPY TO BE AT EVERGREEN

"It's rewarding to work at a place that recognizes the academic contributions that a librarian can make," says Terry Hubbard, Evergreen's new reference librarian and member of the faculty. He has served in similar roles at Duchess Community College in upstate New York, the State University of New York at Stonybrook, the University of Alaska and Colorado State University.

"Evergreen's Library is famous in academic circles, and in library circles, too," Hubbard says, who heard about the Library's vital role in the curriculum long before he came here.

"Evergreen is well-known for the primary relationship its students enjoy with librarians," he says. "People such as Pat Matheny-White and Frank Motley have been widely read in professional literature for librarians across the country."

Hubbard's experience will lend itself well to the cooperation and coordination that are necessary to support Evergreen programs and students. In Alaska, he helped develop a library training system and communications network for librarians in outlying bush communities. He also has experience with legal research from his work as the social science librarian at Colorado State. "Students need to know more about the law," he says. "It's amazing how much it affects our everyday lives."

"Evergreen is a busy place," says Hubbard, who's spent much of his time so far on the Library's day-to-day information services. In addition, he has already plunged into Evergreen activities as a member of the Twenty-Year Anniversary Planning Team (see front page), for which he's researching the archives to plan exhibits, displays and multi-media presentations.

"The new faculty orientation was useful, I think," Hubbard says when asked how he's doing at learning Evergreen's ropes. "It's unimaginable to me that anyone could get going without that orientation. We had a chance to sit with veteran faculty members who rationalized the institutional approach to learning-- information that would take a long time to accumulate on your own."

A major opportunity for him to learn about Evergreen will be as a teacher. "The system of librarians rotating into the faculty is unique. Very few academic libraries have such a system," says Hubbard. "In fact, I can't think of any." Hubbard will begin teaching in an academic program next year.

COMBINED FUND DRIVE BEGINS

Beginning next week, Evergreeners will have a chance to make a meaningful contribution when the college kicks off its portion of the Washington State Employee Combined Fund Drive (CFD). CFD makes it possible for employees to contribute to their choice of 890 local or statewide charities, ranging from the United Way and Foster Parents Plan to Safeplace and the Olympia Child Care Center.

Associate Vice President Ken Winkley, who heads Evergreen's drive this year, reports that 159 college employees contributed a total of \$14,292 in 1985. Each employee will be contacted by a member of the 45-person soliciting team on campus. A complete information packet on selecting a charity and how to give (payroll deduction is available) will be provided. Winkley encourages all Greeners who are interested in joining this important team to call ext. 6500 to volunteer.



SANDY PETERSON NAMED "GREENER OF THE MONTH"

The Committee to Honor Great Geoducks (Secret Quackers) is at it again. A note slipped under our door informed us that "Deli Manager Sandy Peterson has been named Greener of the Month for October because of the great service, super-efficiency and good humor she displays to hundreds of Evergreeners everyday."

"This is the first job I've had that I really enjoy," says Peterson, who was a swing manager at McDonald's for nine years before coming to Evergreen in 1984. "Evergreen is an environment where people appreciate the good things you do."

Since becoming manager this summer, Peterson has done a lot of good things to the Deli and plans on doing a lot more. Her most popular move has been lowering prices and introducing new products. She's also rearranged the layout and has plans for a major redecoration, introducing new sandwiches, trying out an order-your-lunch service, and a guess-how-many-seeds-in-the-pumpkin contest.

"We know you have only an hour for lunch," she says, "and we want to make that hour enjoyable by preparing the best food we can as quickly as possible." Peterson gives a lot of credit for the Deli's bustling but personable spirit to her 10-member student staff. "They are simply fantastic. I don't feel like they work for me, but with me." The feeling is mutual on the part of Peterson's supervisor, Food Service Director Vonda Drogmund. "Sandy's position is very visible. She's constantly on the line, working with the public all day and she's just terrific."

Peterson grew up in Elma and relates that she keeps busy and happy as a single-parent raising her seven-year-old son, Tommy. When asked her dreams, she responds that Tommy takes center stage. "I want to see him grow and succeed. As for herself, she'd like to take advantage of Evergreen's courses, especially computer studies "so I can keep up with my son."

"Evergreen is a great learning place," she adds, "even if you don't go to school here." We thank you, Sandy, for all you've taught us about hard work, innovation and service. It's been delicious!

The "Secret Quackers" welcome your nominations for "Greener of the Month." Send all deserving names and reasons for your choice to the Newsletter, LIB 3122.



NEW CHILDCARE CENTER OPENS

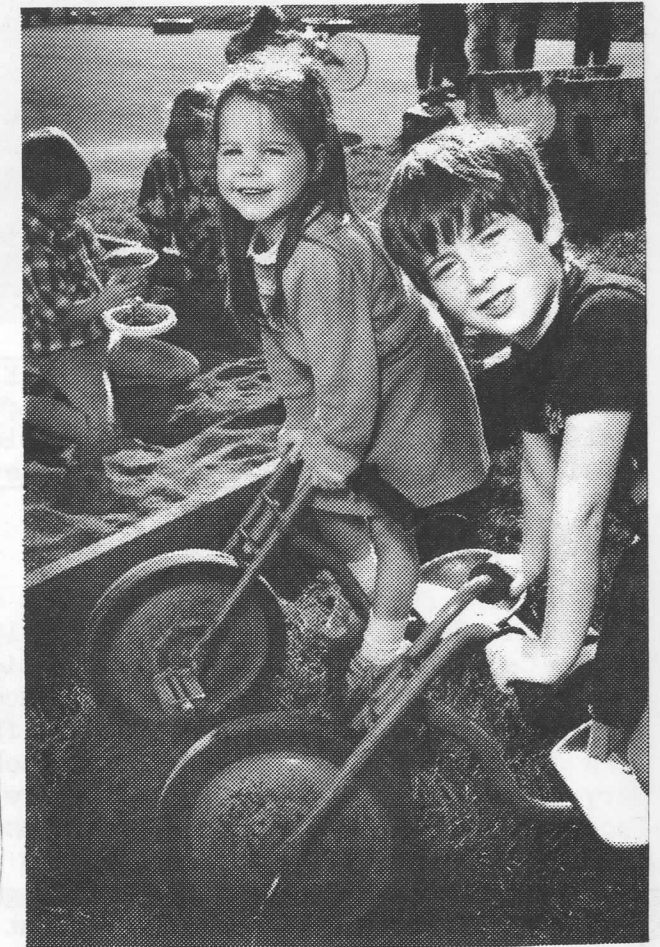
"My three-year-old son, Conor, thinks it's funny that all his favorite Driftwood toys keep showing up in the new place," says Senior Leah Musgrave. As for herself, Musgrave enjoys the fact that Evergreen's new Childcare Center is bigger, brighter and is providing more teachers per children. She also appreciates the fact that the Childcare Center, located in Building 201 near the steam plant is much more convenient for students who drive to school.

Acting Coordinator Laura Olson is delighted with the new space, which enables the staff to set aside a room for toddlers as well as a room for older children. Although she misses the woods around Driftwood, Olson says, "the kids really enjoy rolling down the big hills, and the open space makes it a lot easier to supervise outdoor play."

The Childcare Center has a capacity for 43 children, an increase over the 28-children capacity permissible at the Driftwood facility. The remodeling was designed by Campus Architect Jon Collier, while Sandi Constructors of Olympia was hired to complete the task. The total remodeling budget came to \$76,000.

The switch from "daycare" to "childcare" is not just a random change in titles, but a statement of philosophy. "The term 'daycare' often implies a situation where children are present for the workday without a real program or curriculum," says Olson, "whereas 'childcare' puts more emphasis on taking care of the child, not the day." The name change also reflects the fact that care is available for student parents on Tuesday and Thursday nights until 9:30 and for evening events.

Cont'd on page 2.



JUNIOR BIKERS ALENA O'DONNELL AND Calvin McCracken (above) take a break outside of the new Childcare Center (pictured below).





Photo by Mal Pina Chan

WHO ARE ALL THESE PEOPLE AND WHY ARE THEY LEAVING THE EARTH? NOT TO WORRY, OVER 200 Greeners turned out last week to participate in a massive photo shoot, spelling out four famous initials. Complete details and the final product will be detailed in the upcoming Evergreen ReView, due out in early November.

CHILDCARE cont'd

Building 201's most recent occupant was the Ceramics Studio which has moved to Driftwood. The discovery that potentially toxic metals were disposed of and stored at the Ceramics Studio prompted Facilities to arrange a series of tests and inspections. Bennett Laboratories of Tacoma sampled soils from the site and discovered metals in concentrations ranging from 11 to 754 parts per million. According to a story in the Olympian (Monday, October 13), Thurston County Health Specialist Gary Kato reported that "The levels were well below dangerous waste levels." Facilities Director Ken Jacob ordered the removal of six inches of topsoil from a 100-square-foot play area. The area was resodded and paved.

Inside walls and floors were thoroughly cleaned, surfaces repainted and old floor wax stripped. Industrial Hygienist Rene LaRocque of the Washington State Department of Labor and Industries also visited the center at Associate Vice President Ken Winkley's request and determined that asbestos is not present in the ceiling tiles. Jacob also engaged the University of Washington's Stoneway Laboratories to conduct further soil tests. While conclusive evidence from Stoneway is pending, Janice Camp of the labs has studied the situation and offered the opinion that the Childcare Center is a safe and healthy environment.

In other developments, the first steps toward hiring a Childcare Coordinator to replace Virginia Brian, who resigned last summer, took place this week. On Monday, Dean of Student Development Ernest "Stone" Thomas met with a screening/selection committee, whose members are staffers Rita Pougiales (chair), Kathy Ybarra, and Keith Eisner and student parents Kathy Ferguson and Linda Borgaes. The committee will forward their recommendations to Thomas who hopes to hire the new coordinator early next month. All Evergreeners are welcome to visit the new center and can make arrangements to do so by calling ext. 6060.

REWARD OFFERED IN WAKE OF COMPUTER RIP-OFF

A \$100 reward is being offered to anyone who has information leading to the recovery of \$7200 of computer equipment that was stolen from a Library office last Sunday. The theft of two AT&T 6300 personal computers, one Epson LQ1000 printer and one Hewlett Packard laserjet printer was denounced by Provost Patrick Hill for distressing the staff members whose offices were "violated" and a "critical blow to our ability to provide adequate service." Any information about the burglary should be directed to Security at ext. 6140.

BOARD APPROVES SEXUAL HARRASSMENT POLICY, APPLAUDS ATHLETIC PRESENTATION

Action taken by the Board of Trustees at their regular meeting on Wednesday, October 8, included the approval of the sexual harrassment policy and referring action back to the President and Provost concerning the issuance of three- and one-year faculty contracts. The Board and attendees also reacted very favorably to a report on Evergreen's recreation and athletics programs by Director Jan Lambertz and her staff.

FTE ENROLLMENT HIGHEST EVER

The Board of Trustees also heard the latest on Fall Quarter enrollment in a report by Director of Institutional Research and Planning Steve Hunter, who revealed that Evergreen has the largest number of full-time equivalent students in its 16-year history. The college is at full funded capacity with 2,838 FTE, compared to 2,761 FTE a year ago. This fall's headcount of 2,965 ended up second to last fall's 2,980. FTE and headcount figures are unusually close together because 90% of degree-seeking undergraduates are enrolled full-time. Hunter pointed out that the median age for students dropped nearly a full year, from 25.5 to 24.5, statistically echoed by students in the 17-to-22 age group, who went from 37% of the student body last year to 42% this fall. "It's a reflection of having to cut off applications so early," he said, "which favors high school students over transfers, who tend to apply later in the year." Twenty-nine percent more Washington high school grads applied than last year, while instate two-year transfer applicants were up 10%. Applications for Fall, 1987, are already arriving at a rate well ahead of last year, and prospective students are being advised to apply early.

MUNRO AND MARTIN BEGIN WORK FOR NATIONAL FACULTY

Karen Munro and Faculty Member Rudy Martin will be liasions for the National Faculty for the Humanities, Arts and Sciences, which opened its first regional center at Evergreen earlier this month. Located in Library 2114, the center will serve as the Northwest hub for activities such as program development in elementary and secondary schools and summer institutes for the improvement of teaching. Founded in 1968 and headquartered in Atlanta, Georgia, the National Faculty has successfully conducted such projects in more than 600 schools and school districts across the nation. For expertise, it calls on a pool of more than 400 college and university professors who, rather than focusing on classroom methods, work toward deepening teachers' understanding of subject matter in the humanities, arts and sciences. "The ultimate goal," says Munro, who is community coordinator for the center, "is to inspire more scholarship in elementary and secondary teachers by making them aware of themselves as human resources for their students." Serving as faculty coordinator, Martin will recruit faculty from around the state to participate in National Faculty projects. For more information, contact Munro at ext. 6247, or Martin at ext. 6009.



EVERGREENERS IN THE NEWS

Congratulations to Faculty Member Earle McNeil who has been asked by the Smithsonian Institute to send several of his kaleidoscopes for the Institute's "Toys of All Ages" show that opens November 1 in Washington D.C. McNeil's creations, called "Polarascopes," have beautiful wood tubing and use polarized light rather than colored glass to give a richer, more intense coloration. McNeil is one of 25 craftspersons chosen by the Institute from throughout the U.S.

One Picture is Worth a Thousand Words Department: The last issue of the Newsletter featured a photo of Faculty Member Carl Swenson but omitted the following background information. Swenson, an exchange faculty member from Seattle University, teaches in the "Society and the Computer" program. Degrees: Ph.D., Mathematics, Washington State University; B.Ed., Secondary Mathematics Education, Pacific Lutheran University. Swenson has taught at Seattle University since 1976 and has been a consultant to numerous companies on microcomputer applications.

New Hires: We welcome Susan Ramsauer as a new counselor for Cooperative Education. Ramsauer comes to Evergreen from Saint Martin's College where she worked as director of Financial Aid. We also welcome Development Secretary/Grants Typist Kim Gregory, who takes the place of Mary Hanson, now a secretary in Academics.

Faculty Member Steve Herman is "the talk of the town" in the September 22 issue of The New Yorker. Copies are available at Information Services, LIB 3122.

Did you know Personnel Representative Charen Blankenship and her husband, Ralph, were judges at the Harbor Days Tugboat Races? A job well-done!

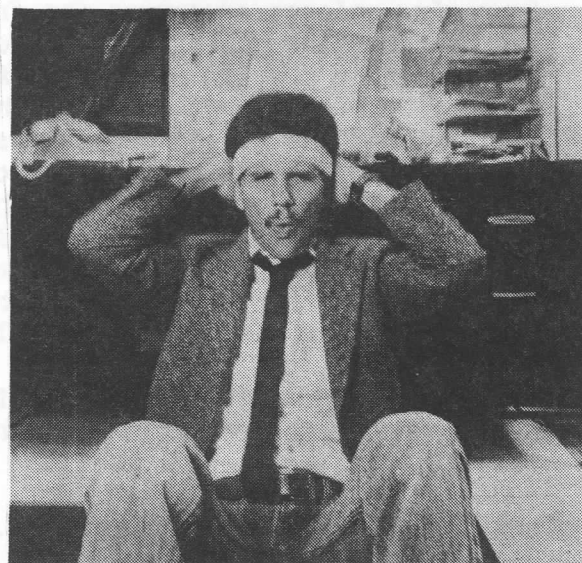
"DOC STRETCH" COMES TO THE NEWSLETTER

The following is the first of a series of articles written by Doc Stretch (a.k.a. Recreational Sports Coordinator Corey Meador, below) on health and exercise.

"How to Run Two Miles in Your Office"

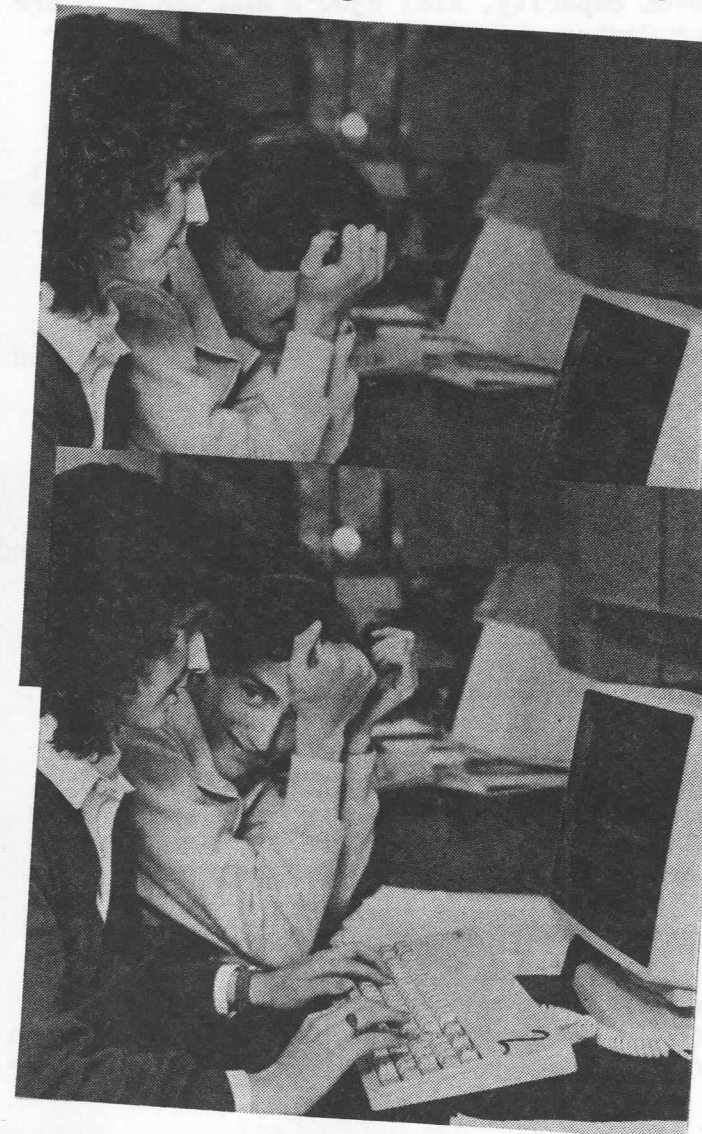
Next time the mid-afternoon blahs hit you, instead of heading for the coffee, you might try a short exercise break. According to the Executive Fitness Newsletter, 20 minutes of sustained exercising can burn as many calories as running a couple of miles. So lock your office door, get comfortable and try a few of the following exercises:

Fourteen side bends a minute will burn an average 1.2 calories; 14 alternate toe touches (sitting) burns 1.4 calories per minute; 10 alternate leg raises (lying)--2.5 calories; 20 sit-ups--4 calories; 28 push-ups--6.5. And for a grand finale, you'll accomplish as much as running by doing 60 jumping jacks, zapping 12.5 calories a minute. Ah, now back to work!



The Evergreen State College

October 3, 1986



FACULTY AND STAFF COMBINE TO GIVE STUDENTS CUTTING EDGE IN SCIENCE COMPUTING

"It's going to be an exciting year in the Computer Applications Lab," says Walter Niemiec, manager of academic support team for the Lab Buildings, where Evergreen's new 3,000 square foot, 22-station computer center for scientific research is taking shape. "We're getting students and faculty to the point where they can take advantage of the tremendous potential of this facility."

Future users of the Lab will be programs such as "Molecule to Organism" and "Ecological Agriculture," students in 3/2 Engineering and the MES Program, and faculty engaged in research, but taking the lead are the faculty and students of "Matter and Motion," a regular Evergreen offering that focuses on the study of physics, chemistry and math. The strategy for teaching those subjects has shifted, however, since the Computer Applications Lab opened last January in Lab II, room 1223, former home of the Self-Paced Learning Center.

"Two years ago we came up with the concept of teaching 'M&M' with microcomputers," says Jeff Kelly, faculty member in chemistry who coordinates this year's program. Kelly and another faculty chemist, Fred Tabbutt, figured that every student in the

HARD AT IT: "Matter and Motion" students Darcy Jennings and David Metzler tackle a program in the Computer Applications Lab.

program should have ready access to a computer, becoming as comfortable and proficient at using it as they were with the other traditional tools of the laboratory. "We planned for students to use their micros for data collection, spreadsheet calculations on results and to word process reports--all things that used to be

Continued inside

BOOKSTORE ANNOUNCES COMPUTER DISCOUNTS, CAMPUS STORES MERGER

Evergreen faculty, students and staff have a great opportunity to save on AT&T computer hardware says Evergreen Bookstore Manager Denis Snyder. The contract between the Bookstore and AT&T enables Evergreeners to purchase terminals, keyboards and monitors at approximately 30% off list prices. Snyder reports that the AT&T hardware is IBM compatible with a 640K capacity. AT&T 6300's and IBM PC's are available to use and view in the Computer Center, LIB 2408. Contact the Computer Center Aide at the front desk for complete instructions.

Another significant development is the merger of the Bookstore and Campus Store operations. On July 1 the Campus Store was moved into the Bookstore. "This change," says Snyder, "will provide budgetary units with more hours of operation, larger selections and quicker response to special needs. Offices will have access to supplies six days a week and on most orders we'll be able to have the merchandise delivered the next day if we don't already have it on stock."

All merchandise purchased from the Bookstore or the Campus Store (located in the back left-hand corner of the Bookstore) will be charged to the budgetary unit at the Bookstore customer service counter. Goods from campus stores will be billed as priced, while Bookstore items will be discounted to insure competitiveness.

Snyder reports that Accounting Assistant Lois Lince handles billing procedures, Order Service Coordinator Jeannie Andrews is in charge of campus office supplies, while Stockroom Attendant Nat Blankenship has been transferred to the Bookstore and directs the receiving department. One other change is the discontinuation of pre-printed forms by the Campus Store. These forms will be stocked and distributed by the Print Shop. Snyder encourages Evergreeners to call him at ext. 6216 with all questions and concerns. In the meantime, check it out!

YOUR WORDS ARE WELCOME AT THE GOVERNANCE INFORMATION BOARD

The old "Current Events" board in the CAB MALL outside the Bookstore has been re-lettered, and re-designed to carry up-to-date information on Evergreen's governance systems. With your help, the new Governance Information Board will become a clearinghouse for minutes, agendas and rosters of all current DTF's, committees and boards on campus. Each governance body will be assigned one of the plexiglass slots to post information on past or upcoming decisions. All information to be posted on the Governance Information Board must be submitted to the Student Communications Center, LIB 3132, or to Information Services, LIB 3122.

The board also has a section for proposals and comments on governance issues. These also should be submitted to the SCC or Information Services. All information will be posted for at least one month. Contact Information Specialist Keith Eisner at ext. 6128 for complete details.

KAOS RECEIVES FEDERAL TRAINING GRANT

KAOS Station Manager Michael Huntsberger reports that the Corporation for Public Broadcasting, located in Washington, D.C., has awarded a \$1,000 training grant to the campus station. The funds will be used to bring NPR (National Public Radio) Producer David Ossman to Evergreen in February for a three-day workshop with KAOS staffers and students. Ossman is a former member of the Firesign Theatre Troupe. Huntsberger says, "I'm very pleased with this award. Over 500 proposals are made each year to CPB and only about 75 are accepted. This is our second award. Ossman's visit should be a real boost to our programming."

FACULTY AND STAFF COMBINE

Continued from page 1

done by hand," Kelly says. "We wanted them to encounter a scientific computing lab that would be like current facilities in a modern industry or research lab."

"Matter and Motion" students spent the first week of the quarter learning the word processing functions of the microcomputers by writing a paper on their backgrounds. As the quarter progresses, they will conduct experiments that combine physics and chemistry principles, taking measurements with the computers and then performing calculations on the data using computer programs they have written.

John Buczek, science programmer and manager of the Computer Applications Lab, helps "Matter and Motion" faculty and students learn how to use the sophisticated equipment. "Lab teaching at most colleges isn't especially different than it was 200 years ago," he says, "they're still using test tubes, pipettes and bunsen burners. We'll be teaching students to let the computer control the experiment and collect data as it happens," says Buczek. "That way, they can concentrate on the concepts involved."

The "Matter and Motion" program has become much more unified and interdisciplinary. Physics, chemistry and calculus are now taught as a series of concepts, and Winter Quarter the program will examine social implications and perspectives that lie beyond science textbooks. "The Computer Applications Lab is providing an arena for this integration," says Kelly. "I don't know of any college that's combining physics, chemistry and calculus in a single offering like this."

Faculty Physicist Rob Cole, who along with Kelly and Tabbutt completes the "Matter and Motion" faculty team, reports that teaching colleagues of his at other colleges "were astounded when I described what we were doing. Our ability to take data on-line from lab instruments is fairly close to state-of-the-art. In terms of teaching, it's unique."

"Matter and Motion" is also unusual because first- and second-year Evergreen students have as much access to computers as advanced students. While similar facilities at other colleges are often for seniors only, five of the 63 "M&M" students are freshmen and more than 50 are sophomores.

"The needs of freshmen and sophomores are quite different from those of most other students," says Kelly. The National Science Foundation recognized this in 1985 when it awarded Evergreen a \$50,000 grant based on Tabbutt's proposal for improving science education for freshmen and sophomores. After matching the grant last spring, the college purchased 13 AT&T microcomputers, 12 of which are in active use in the Lab by "Matter and Motion" students.

Complementing that award is the Computer Applications Lab's first acquisitions in 1985 of 10 Intel microcomputers with software, documentation and training from a \$350,000 grant. Intel made a second grant last spring for two additional, and more powerful, microcomputers. Other corporate contributions include a videoprinter from Polaroid; 10 color monitors from Conrac and software from Microsoft.

Soon to come are three super minicomputers, the result of a \$300,000 AT&T grant (largest of its kind in Washington), one of which will be used in the Computer Applications Lab as a file server for the AT&T stations and to link them with printers, plotters and other support equipment.

"What's most pleasing," says Niemiec, who has seen the Computer Applications Lab grow over the past two and a half years from wishes on paper to an expanding reality, "is seeing a student who has been lost and fumbling around in the lab suddenly catch fire and take off. That," he nods at the myriad of equipment around the Lab, "makes this all worth it."



Special Edition

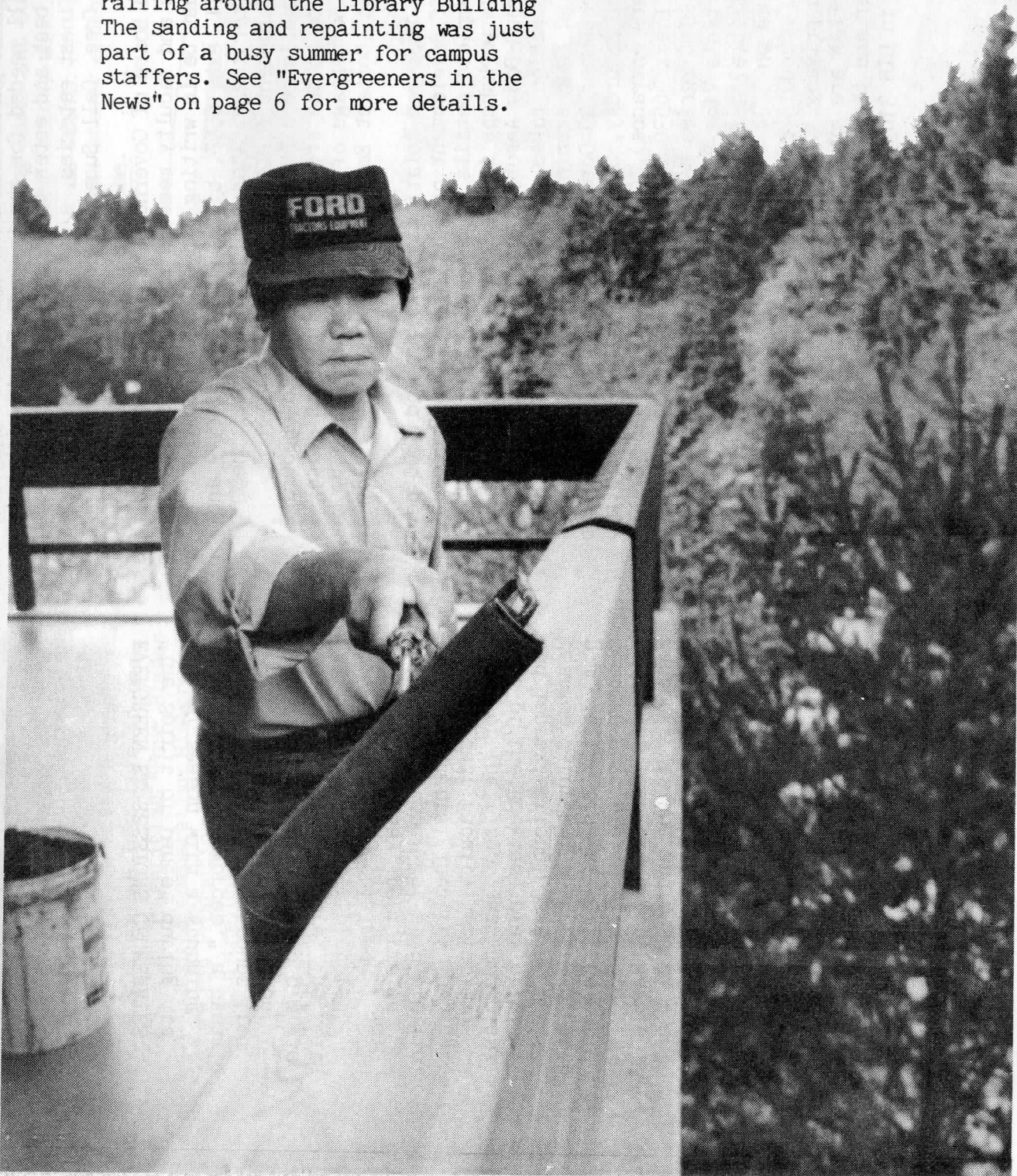
Newsletter

Happenings Inside

The Evergreen State College

September 19, 1986

ROLLING ON: Maintenance Mechanic
The Nguyn puts the final touches on
railing around the Library Building
The sanding and repainting was just
part of a busy summer for campus
staffers. See "Evergreeners in the
News" on page 6 for more details.



"The experiment works"

'86 Convocation Highlights Plans, Budget and "Shibumi"

by Keith Eisner, Information Services

Applause, laughter, a cello and flute duet, and the surprise appearance of an Evergreen regular--a big, black shaggy dog--enlivened this week's staff and faculty Convocation. Louise and Eric Moon from Bloomingdale's School of Fine Art provided the music as over 250 staff and faculty members packed Lecture Hall one on Tuesday.

After welcoming the faculty back and applauding the work of the staff, President Joe Olander introduced Board of Trustee Chairman Richard Page. "In years past," Page said, "one might say, 'Welcome back to the Evergreen experiment.' But that is no longer the case. The results are in and it's positive--this college is here to stay. The experiment works."

Strategic Plan Discussed

Olander followed Page, stating in his opening remarks that, "I'd like this college to be a little bit bigger, a little better, more diverse in its ethnicity, and a hell of a lot more fun."

He then discussed Evergreen's Strategic Plan which was approved by the Board of Trustees last month. The plan, he explained, is not completed. "Although we have a product, the vice-presidents and I are now in the phase of refining and implementing the directives of the plan." He then outlined the following major themes:

1. The Strategic Plan implies that Evergreen is going from a "culture of innovativeness to one of innovativeness and excellence." The plan calls for more program evaluation to identify and develop sources of strength across campus.

2. The plan recognizes that growth and development are inevitable and desirable and states a commitment to plan and implement such growth with great care.

3. Curriculum Development, including the commitment to community service, exploring Pacific Rim or "Northwest Studies," filling in the holes in our curriculum and establishing our strongest educational programs as "Centers of Excellence," which will help us define what we know works best.

4. Greater ethnic diversification in students, faculty, staff and curriculum.

'87-89 Budget Request

The theme of Evergreen's 1987-89 budget request, said Olander, "is completing the college in an era of limited resources. I am pleased that this budget is driven by policy, not the reverse." He outlined four major initiatives.

1. Quality Improvement. The college is asking for \$1.7 million to improve educational quality for its current enrollment of 2600 FTE. Key objectives are:

A. \$500,000 for faculty and



program development.

B. \$350,000 to expand the Library collection.

C. \$90,000 to escalate assessment of academic programs.

D. The improvement of student life through more effective administration, academic advising and increased retention and recruitment of minority students.

2. Management Efficiency. The college is asking for \$1.2 million for the acquisition of hardware and software for our business operations and increased staff development and training.

3. \$3.5 million for Enrollment Growth. "Evergreen's physical plant capacity can accommodate 3200 FTE students," said Olander, "I'm asking for an increase of 600 FTE students by 1988." He said that such growth would provide greater economy of scale and help reduce the institutional cost per student, allowing completion of necessary faculty hiring to insure quality in all Core Programs and more opportunities for advanced study.

4. Faculty Salary Increase. Evergreen joins the Higher Education Coordinating Board in recommending a 20% increase in faculty salaries. This requested increase is based on the HEC Board's study of faculty salaries at peer institutions in eight other states.

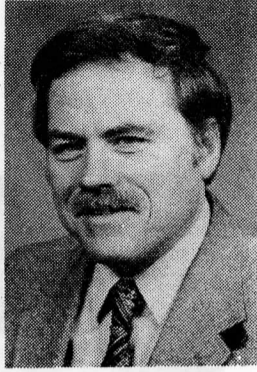
The total budget of \$45.3 million represents a 30% increase, reported Olander, and is "a hefty but honest request." He also stated that the \$16.3 million capital budget request will address such programs as safety projects, program support, property protection, energysaving projects and a multifunctional community building.

Olander closed by remarking on the nationwide obsession with the "search for excellence." "Instrumentalism," he said, "is the madness of our times." Instead, he urged an attainment of "shibumi," a Japanese concept of "inner excellence, of having a sense of your own craft and who you are."

"I am much more excited to be here this year. Good things are coming our way."

Unannounced Wag Takes Stage

During the break before Provost Patrick Hill's address to the faculty (staff were invited to stay) a black dog with a red bandanna trotted down the aisle of the



hall and across the stage, finally lying down behind the podium. "Back to Evergreen's returning values," called out one wit. Hill added to the levity by paraphrasing Olander's instructions to him: "I'll tell them everything's going to be wonderful and relaxed. You tell them about the 48 new DTF's."

Instead, Hill outlined four challenges for the new year. In brief, they are:

1. Assessment of Faculty Evaluation, including the "necessity for the faculty to rewrite portions of the Faculty Handbook that deal with reappointment and retention policies."

2. Meeting the Strategic Plan's call for reasonable growth.

3. The formation of a Native American Study Group, which will work with Faculty Member David Whitener to answer such questions as "Can the college do a better job of serving the NAS program?" and "How do we integrate a diverse set of pedagogies in one institution?"

4. Two to three hundred members of The Society for Values in Higher Education, a national organization of 1300 professionals, will be on campus next August for a major, five-day conference. Hill said that they are deeply interested in Evergreen and the experience of people who have taught at an institution where interdisciplinary study is promoted and valued. Evergreen faculty members will write essays for the conference on such topics as applied technology, agriculture and the Liberal Arts, and the feminization of inquiry. Academic Dean David Marr and Faculty Member David Hitchens will coordinate a project to write intellectual autobiographies of Evergreen faculty.

Hill predicted that this agenda will go a long way toward revitalizing our faculty, showcasing our academic excellence and bringing together the Evergreen community.



SAGA Staffer June Brown passed away on August 25, due to injuries received in an August 8 auto accident. June worked here for 14 years and the campus treasures the memory of her smile and friendliness.

Evergreen Welcomes Aboard 25 New and Returning Faculty

Add the geomorphology of Death Valley, African political thought, cave bats, the history of rock and roll, and feminist filmmaking to the treasury of Evergreen's faculty expertise and experience. You'll also find "The Image of Alaska in Literature," "Phosphate Inhibitors of Carboxypeptidase A" and "Hucksterism in Automobiles" when reviewing the background of Evergreen's 25 new, returning and exchange faculty members. Here's a brief introduction.

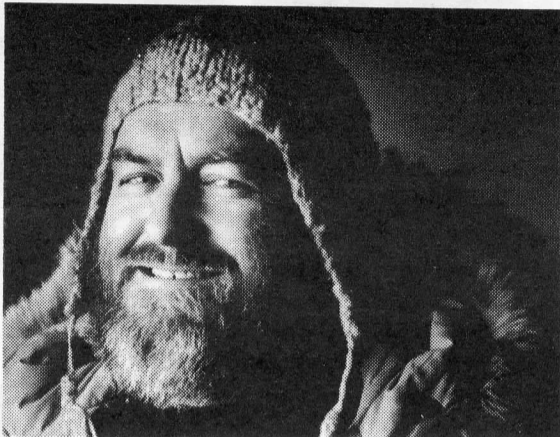
Larry Beck teaches in the "Studio Program" this fall. Degrees: M.F.A., Sculpture, University of Washington; B.A., Painting, University of Washington. Beck is a noted Native American sculptor whose major commissions include works for the King County-International Airport, the Highline Library and Seattle's Golden Gardens Project.

Andrew Buchman, an exchange faculty member from the University of Washington and Evergreen graduate, '77, teaches in the "Art, Literature and Music: New Beginnings" program. Degrees: D.M.A. Composition (pending), University of Washington; M.A., Music History (pending), University of Washington; M.M., Composition, University of Washington; B.A., Liberal Arts, The Evergreen State College. Buchman has taught music studies at the U.W. since 1984, and taught a "History of Rock and Roll" course at Shoreline Community College. Welcome back!

Paul Butler teaches in the MES program. Degrees: Ph.D., Geology, University of California at Davis; M.S., Geology, University of California at Berkeley; A.B., Geography, University of California at Davis. Butler comes to Evergreen from a teaching position at the State University College in Oneonta, NY. He has conducted extensive studies of the natural history of Death Valley.

Jerry Cederblom teaches in the "Thinking Straight" program. Degrees: Ph.D., Philosophy, Claremont Graduate School; B.A., Philosophy, Whitman College. Cederblom taught philosophy at the University of Nebraska-Omaha and is co-author of Critical Reasoning. He is currently writing a book entitled Organizational Ethics.

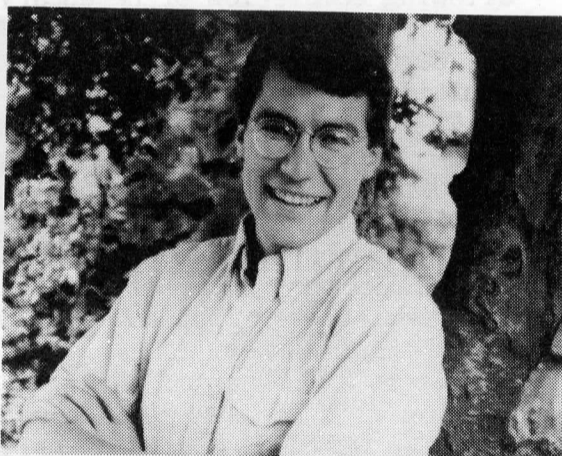
Helen Darrow, a Western Washington University faculty member, is one of four faculty initiating Evergreen's new teacher education program with Western. Degrees: B.S., Elementary Education, Wilson Teachers College; M.A., Education, University of California at Los Angeles; Ed.D., Supervision and Curriculum Development, Columbia University. Darrow has been cited in Leaders in Education, World's Who's Who of Women and Who's Who of American Women for her consultative work and writings on elementary education.



BECK

Malcolm De Weese teaches in the MPA program. Degrees: M.B.A., University of Washington; Ph.D., History, University of Washington; B.A., History, University of Arizona. De Weese has been a member of the Washington State Hospital Commission, where he worked as a principal investigator on "The Measurement of Case Mix for Prospective Reimbursement in Hospitals."

Nancy Finley, exchange faculty from Seattle Central Community College, will teach in the "Human Development" program this spring. Degrees: M.A., Psychology, Western



BUCHMAN

Washington University; B.A., Psychology, Western Washington University. Finley has taught at Seattle Central since 1971, where she developed curriculum in the fields of physiology, stress control and applied behavioral psychology.

Library Specialist Bob Haft will teach in the "Great Books" program this fall. Degrees: B.S., Psychology, Washington State University; M.F.A., Photography, Washington State University. Haft reports that he currently has work on exhibit in Moscow ("Idaho, that is," he adds.)

Larry Hall, exchange faculty from North Seattle Community College, teaches in the "Stories: Origins and Meanings" program. Degrees: M.S., Psychology, Western Washington University; B.A., Psychology, Western Washington University. His areas of expertise include teaching, counseling, com-

puters and contract mediation.

Bruce Hayward, exchange faculty from Western New Mexico State University, teaches in the "Introduction to Environmental Studies" program. Degrees: Ph.D., Zoology, University of Arizona; M.S., Zoology, University of Michigan; B.S., Wildlife Management, University of Minnesota. Hayward, who has written numerous articles and papers on bats, has exchanged houses and positions with faculty member Llyn De Danaan, who is teaching as part of Evergreen's first exchange with Western New Mexico State University.

Barbara Hammer teaches in the "Performance Media in Contemporary Culture" program. Degrees: M.A., Film Production, California State University at San Francisco; M.A., English Literature, California State University, S.F.; B.A., Psychology, University of California at Los Angeles. Hammer has produced 16 critically-acclaimed films and has exhibited her work in the U.S. and Europe.

Terry Hubbard is Evergreen's new reference librarian. Degrees: B.A., History/Business, University of Vermont; M.A., History, San Francisco State University; M.L.S., University of California at Los Angeles. Hubbard was previously the social sciences librarian at Colorado State University and a member of the National Ski Patrol.

Neil Jacobsen teaches in the "Organic Chemistry" program. Degrees: Ph.D., Organic Chemistry, University of California at Berkeley; B.S., Chemistry, University of Oregon. Jacobsen won the U.C. Berkeley Outstanding Teaching Assistant Award in 1977, and is an avid mountaineer and rockclimber.

Thomas McAllister teaches in Vancouver. Degrees: Ph.D., M.A. and B.A. in Political Science all from the University of Washington. He played Husky football and comes to Evergreen from a teaching position at George Fox College in Oregon.

Ralph McCoy teaches a group contract on "Experimental Theater." Degrees: B.A., Business Administration, Howard University. McCoy has extensive theater experience including work as choreographer/director



BUTLER



DARROW



FINLEY



HAMMER

for the Marin Shakespeare Festival, the Coeur d'Alene Summer Theatre and at the Cornish Institute.

Ralph Murphy teaches in the "Political Economy and Social Change" program this fall, and will teach in the MPA program in winter and the MES program in spring. Degrees: Ph.D., Political Science, University of Washington; M.A., Political Science, University of Washington; B.A., Political Science and Economics, University of Washington. Since 1983 Murphy has worked for the city of Lacey as a consultant/project manager, researching the impacts of a proposed 12,000 acre annexation.

Sandra Nisbet returns to Evergreen to teach in the "Family,



HALL HAYWARD HUBBARD

Community and Personal Life" program. Degrees: M.A., Theater Arts, Indiana University; B.A., Speech and Drama, San Jose State University. Nisbet won the 1982 "Spotlight Award" from the Washington Association of Theatre Artists for "the development of original and creative theatre."

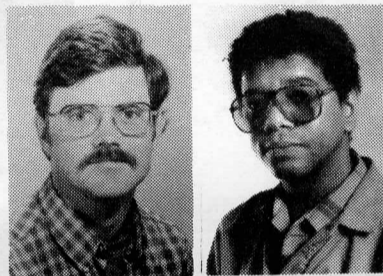
John Parker is the director of the new Evergreen-Western Washington Teacher Education Program and will teach in the "Children's Literature and Psychology" program. Degrees: Ed.D., Curriculum and Supervision, Harvard University; M.A.T., Social Science Curriculum, Harvard University; A.B., Brandeis University. Parker played a key role in the establishment of an alternative non-graded, interdisciplinary program at John Adams High School in Portland. He is also a keen student of the use of advertising slogans by the automobile industry.

Rosalie Reibman teaches in the "Human Development" program. Degrees: M.Ed., University of Washington; B.A., Psychology, University of Washington. Reibman

is writing her dissertation on the affiliation and power needs of depressed women and their spouses.

Janet Ray, exchange faculty from Seattle Central Community College, will teach in the "Human Development" program this winter. Degrees: M.A., Topology, University of Washington; B.A., Mathematics, University of New Hampshire. Ray is the author of Your Number's Up, a math anxiety book.

Bobby Righi, exchange faculty from Seattle Central Community College, teaches in the "Human Development" program. Degrees: M.A., Mathematics, Purdue University; B.A., Mathematics, Lamar University. Righi coordinates



JACOBSEN MCCOY

Seattle Central's developmental math program.

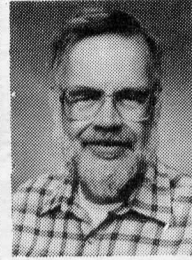
Sy Schwartz, a Western Washington University faculty member, teaches in Evergreen/Western's new teacher education program. Degrees: Ed.D., Curriculum and Instruction, Wayne State University; M.S., General Secondary Education, Wayne State University; B.S., Social Studies, Wayne State University. Last year he presented a paper on "Courage as a Curricular Concern" at a national meeting on Academic Rigor and the New Curriculum held in Philadelphia.

Satoru Taira, exchange faculty from Japan's Kobe University of Commerce, teaches in the MPI program. Degrees: L.L.M., Graduate School of Law, Waseda University, Tokyo; L.L.B., Waseda University. Taira has published numerous studies on transnational arbitration and sovereign immunities.

RIGHI (left) and RAY (right) with Seattle Central Community College Faculty Member Rachel Levine at a Washington Center for the Improvement of the Quality of Undergraduate Education meeting held last spring at Camp Bishop



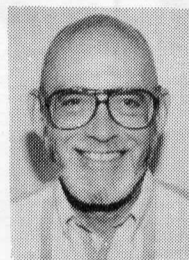
MURPHY



PARKER



REIBMAN



SCHWARTZ



SWENSON



TAIRA

John Wood will be teaching in "The Helping Professional" program. Degrees: Ph.D., Human Behavior, Union Graduate School; B.A., Journalism, San Diego State University. In addition to conducting extensive research in the areas of human relations and psychology, Wood has served as a consultant to the U.S. Department of Justice on race relations and the media.

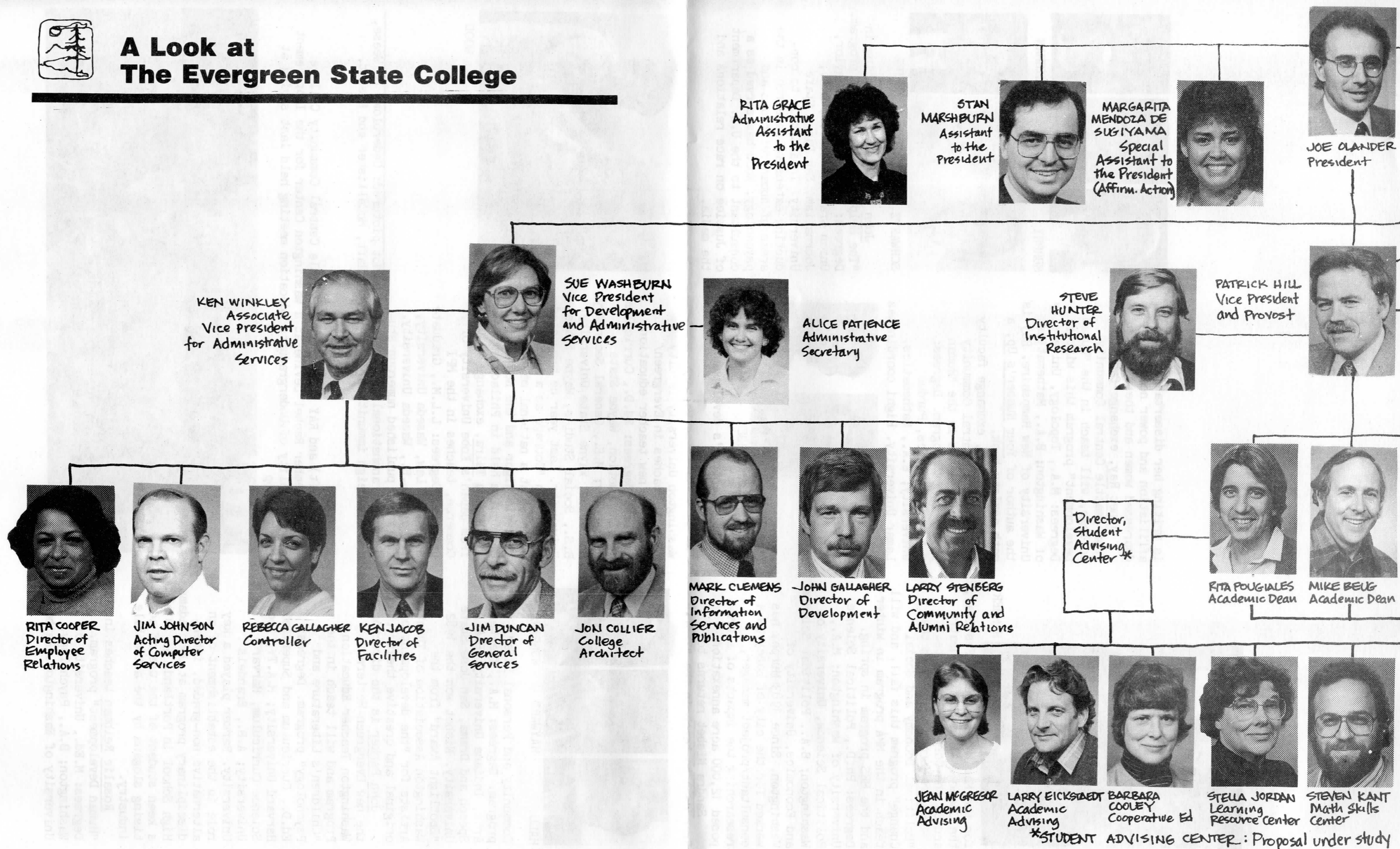


WOOD

Not pictured: Cederblom, De Weese, Haft, McCallister and Nisbet.



A Look at The Evergreen State College



JOE OLANDER
President

RITA GRACE
Administrative Assistant to the President

STAN MARSHBURN
Assistant to the President

MARGARITA MENDOZA DE SUGIYAMA
Special Assistant to the President (Affirm. Action)

SUE WASHBURN
Vice President for Development and Administrative Services

ALICE PATIENCE
Administrative Secretary

STEVE HUNTER
Director of Institutional Research

PATRICK HILL
Vice President and Provost

KEN WINKLEY
Associate Vice President for Administrative Services

RITA COOPER
Director of Employee Relations

JIM JOHNSON
Acting Director of Computer Services

REBECCA GALLAGHER
Controller

KEN JACOB
Director of Facilities

JIM DUNCAN
Director of General Services

JON COLLIER
College Architect

MARK CLEMENS
Director of Information Services and Publications

JOHN GALLAGHER
Director of Development

LARRY STENBERG
Director of Community and Alumni Relations

RITA POUZIALES
Academic Dean

MIKE BEUG
Academic Dean

Director, Student Advising Center*

JEAN MCGREGOR
Academic Advising

LARRY EICKSTAEDT
Academic Advising

BARBARA COOLEY
Cooperative Ed

STELLA JORDAN
Learning Resource Center

STEVEN KANT
Math Skills Center

*STUDENT ADVISING CENTER: Proposal under study



CLAUDIA BEYER
College
Internal
Auditor
(on leave)



KATHLEEN GARCIA
Budget
Director
(On leave)



KAREN WYNKOOP
Assistant Vice President
for Academic Budgeting
and Financial Planning



KRIS JOHANSSON
Administrative
Assistant



RUSSELL LIDMAN
Director of the
Washington State
Institute for Public Policy



GAIL MARTIN
Vice President
for Student
Affairs



BILL ZAUGG
Administrative
Assistant
for Budget



KATE CROWE
Administrative
Secretary



DAVID MARR
Academic Dean



BARBARA SMITH
Academic Dean



SARAH PEDERSEN
Acting Dean of
Library Services



STONE THOMAS
Dean of
Student
Development



GARY RUSSELL
Campus
Police Chief



JAN LAMBERTZ
Director of
Recreation
and Athletics



JEANNIE CHANDLER
Director
of Housing



ARNALDO RODRIGUEZ
Dean of
Enrollment
Services



CHER STUEWE-PORTNEFF
Prior Learning

FACULTY



KATHY YBARRA
Administrative
Coordinator of
Student Activities



JOYCE WESTON
Director of
Career
Development



SHARY SMITH
Director of
Counseling and
Health Services



TOMAS YBARRA
Director of
Upward Bound



SHERRY WARREN
Coordinator of
KEY-Special
Services



APRIL WEST-BAKER
Coordinator of
First Peoples
Coalition



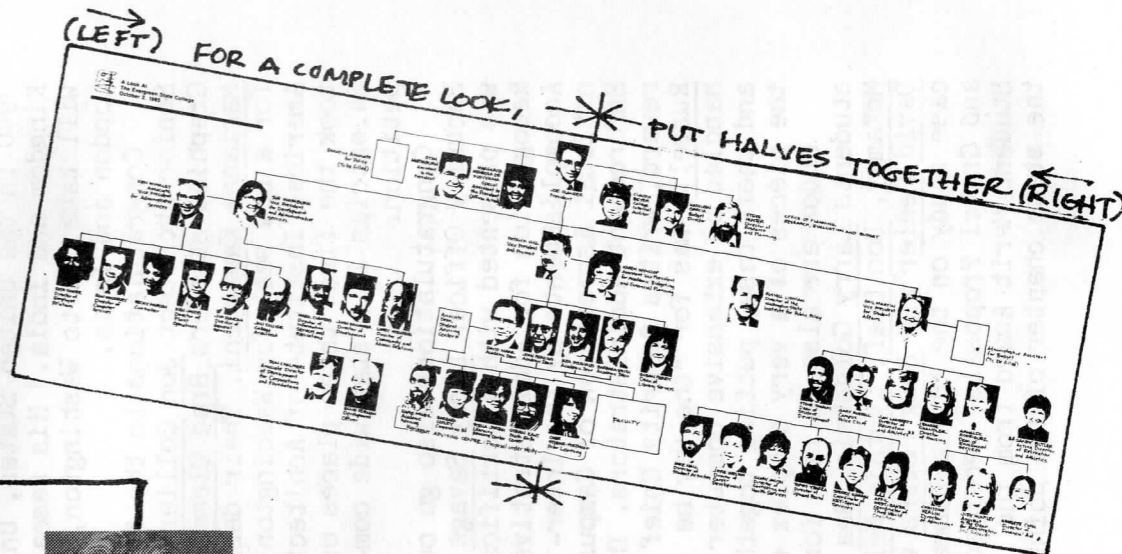
CHRISTINE KERLIN
Director
of Admissions



JUDY HUNTLEY
Assistant
to the Dean
for Registration
and Records



GEORGETTE CHUN
Director of
Financial Aid



Evergreeners in the News

What We Did This Summer— And More

For the folks on the home front, it was a quiet but busy summer. The Facilities staff undertook 168 projects including: reroofing Labs I and II, the Communications Building, the Central Utility Plant and the Maintenance Shop; installing new fire detectors, alarms and annunciators in all buildings; fixing the chinks in the Campus Plaza bricks; remodeling the Ceramics Shop--Evergreen's first building--into the new Childcare Center; installing new, energy-conserving lights; and painting, painting, painting.

Meanwhile, the Office of Cooperative Education had their busiest summer in 10 years, coordinating 122 student internships. Conference Services welcomed over 5,000 visitors, attending 70 conferences, to campus this summer. Groups included the Tacoma Youth Symphony, the Northwest Boychoir, Elderhostel and the International Permaculture Institute. The Upward Bound Program celebrated its ninth year at Evergreen with 47 minority high school students attending from the Tacoma area.

Affirmative Action Officer Margarita Mendoza de Sugiyama has been selected by the national YWCA to be a member of a 16-woman delegation to South Africa. During their three-week stay this November, the American women will work with South African women of all races to develop educational strategies to inform Americans about the effects of apartheid on women and children.

Evergreen Faculty Member John Perkins is also a world traveler this year. He received a grant from the Smithsonian Institute to conduct a study entitled "Four Blades of Grass: A Comparative History of the Crop Production Sciences since 1940 in the United States, United Kingdom and India." His research will take him to Washington, D.C., London and India.

Congratulations to the team of Senior Architect Jon Collier and Graphics staffers Brad Clemmons and Marianne Kawaguchi. Their designs for a new seal for Washington's American Institute of Architects took the first three places out of 24 entries in a statewide competition.

Congratulations also go out to Security Officer Larry Savage who was presented with a Certificate of Recognition for Administrative Accomplishments by the International Association of Campus Law Enforcement Administrators. The reward, writes Security Chief Gary Russell, was for "the way he handled an extensive computer fraud and theft case, putting together the pieces of a very complex case."

Kudos are also in line for MES students Larry Goldstein, Bea McKamey, Don Leaf, Cynthia Nelson, David Peeler and Doug Peters whose case study on the "Hamma Hamma Sand and Gravel Proposals" received a Student Merit Award from the the state chapter of the Joint

American Planning Association. The association also presented a Special Recognition Award to "Sustainable Community Design" students Erica Guttman, Linda Phillips, Robert Waldron and Rhys Allen Webb for their "Madison Scenic Park" study, conducted under the direction of Faculty Member Rob Cole.

Junior Shelley Stiltner is a recipient of the \$500 Agnes Vaughn Memorial Scholarship. Stiltner was one of 17 students vying for the honor which is bestowed on an undergraduate woman working in the field of transportation.

"New Metal Sculpture" by Faculty Member Jean Mandeberg is on exhibit at the Marianne Partlow Gallery in downtown Olympia from through October 8.

Congratulations to the Trujillo family on their latest addition: Rosa Alicia, born on August 15. Communications Building Manager Ed Trujillo reports that her first words on arrival were "When's rehearsal, Dad?"

Back to School: three Greeners enjoyed high school reunions (sort of). Media Technician Allie Hinkle, voted "most carefree" by her classmates in Seoul, Korea, enjoyed her 15-year reunion in Colorado, while Bookstore Manager Denis Snyder "had a blast" at number 20 with his buddies in Bainbridge. Information Specialist Keith Eisner reports that he was unable to attend his 20-year reunion in

Traverse City, Michigan. However, an old friend, posing as Eisner, went and had a great time.

Hello and Goodbye. We welcome the following new Greeners: Steve Willis, librarian; Ann Shepard, library technician; Beth Hartmann, accounting assistant supervisor; Dan Clarke, custodian; Patty Marks, academics secretary; Julian "Pete" Pietras, coordinator of Academic Computing; Glenda Pegram, program assistant for Registration and Records; Judy McKenzie, program assistant for Exhibit Touring Services; Gary Arvan, Instructional Technician; Kitty Parker, Academic Advising Program Assistant, and Photographer Steve Davis.

We say goodbye and thank you to Custodian John Johnson, Office Assistant Donna Bunten, Program Assistant Barbara Watrous, Photographer Margaret Stratton and Program Assistant Betty Lochner. The Newsletter also says "see you later" to Executive Associate for Policy Jack Daray who's taken a one-year leave-of-absence to serve as associate executive director for the Higher Education Coordinating Board; Internal Auditor Claudia Beyer, who's also taken a leave-of-absence, and Photo Services staffer Tracy Hamby who's taking a year off to photograph the world.

If we've missed your arrival or departure, award or feat, please let us know. Send to: Newsletter, LIB 3122, or call ext. 6128. Thanks!

IT WASN'T ALL HARD WORK AND NO PLAY for Greeners this summer. Ranging in experience from near-pro to first-time-ever, 28 staff and faculty golf enthusiasts turned out for the first annual GeeFour (Greater Geoduck Golf Gathering) at Scott Lake Golf Course in July. Low cards for men and women for the nine-hole affair were Accounting Manager Ron Stead with a 41 and Lela Bauman (mother of Accounting Assistant Supervisor Debbie Davies) with a 42. "Big Stick" Larry Stenberg (below) won the GeeFour prize for Closest to the Pin when his tee shot came within 24 feet of the flag, but he couldn't have done it without the steady support and comprehensive dental coverage of "Ironman" Doug Scrima.



Photo by Brad Clemmons



Happenings

NOTE: The Happenings has been included in this special edition of the Newsletter. Beginning next week, the Happenings will come out every Friday and detail upcoming events on campus throughout the school year, while the Newsletter will return to its regular format and appear every other Friday. Deadline for submission to the Happenings is Tuesday at noon. Please contact the Information Center in the CAB MALL or Pat Barte, LIB 3122, ext. 6128 with all Happenings submissions.

SPECIAL ANNOUNCEMENTS & UPCOMING EVENTS

>>>The President's STUDENT CONVOCATION is scheduled for Wednesday, September 24, from 10:30-noon, in the Library Lobby. President Olander, Provost Patrick Hill, and Vice Presidents Gail Martin and Sue Washburn will discuss the upcoming year. Two important items of discussion will be Evergreen's budget requests and the college's Strategic Plan.

>>>Orientation DANCE, Saturday, September 20, 9 p.m.-midnight, in LIB 4300. Tropical Rainstorm is the featured band and admission is \$1.00.

>>>Tickets are on sale now for the Evergreen College Community Organization's (ECCO) fourth annual "Celebration of the Evergreen State," a wine and seafood GALA EXTRAORDINARE! Fresh crab, salmon, clam and oysters and the best Washington wines will be the featured fare on Sunday, October 19, 4-6 p.m., in the Library Lobby. Admission is \$10 and tickets must be purchased by Friday, October 10. Tickets are available from Yenny's Music, the Evergreen Bookstore, the Marianne Partlow Gallery, an ECCO Board member or from Information Services in LIB 3122, ext. 6128.

>>>S&A BOARD POSITIONS are now open. If you're a student or a faculty member interested in evaluating existing and proposed programs and making funding recommendations to the administration, contact the Student Activities Office, CAB 305, ext. 6220.

>>>13 JOBS are also available through the S&A Office. Positions as student coordinators, office aide and recorder are open. Applications are being accepted at CAB 305. Position descriptions are posted at the Financial Aid Office in LIB 1218. Call ext. 6220 for complete details.

>>>Make plans now to attend the seventh annual HARVEST FAIR on Sunday, September 28, from 11 a.m.-6 p.m. on the beautiful 13-acre Organic Farm. Entertainment, delicious foods, children's activities, arts and crafts, farm tours and films, and a Pie Baking contest are all on tap. Admission: FREE! Park in Lot B and take the free shuttle bus to the farm or walk the gentle woodland trail from Lot B to the farm. Rain or shine!

>>>PIES, PIES, PIES are still needed for the Harvest Fair's pie contest. Don't be shy. Bake up your best and enter the contest. Prizes include dinners at some of Olympia's finest eateries, a half cord of firewood, a massage and more. Entry is free. Call Susan Moser at ext. 6160 for complete details.

>>>The Evergreen Foundation Board of Governors has allocated \$5,000 this year for grants to students and faculty members for specific projects and activities. Applications must be in writing and delivered to the Development Office, LIB 3114, ext. 6565, by October 9, January 9 and April 1. Applications arriving after these dates will be held until the following quarter. Call Development for complete details.

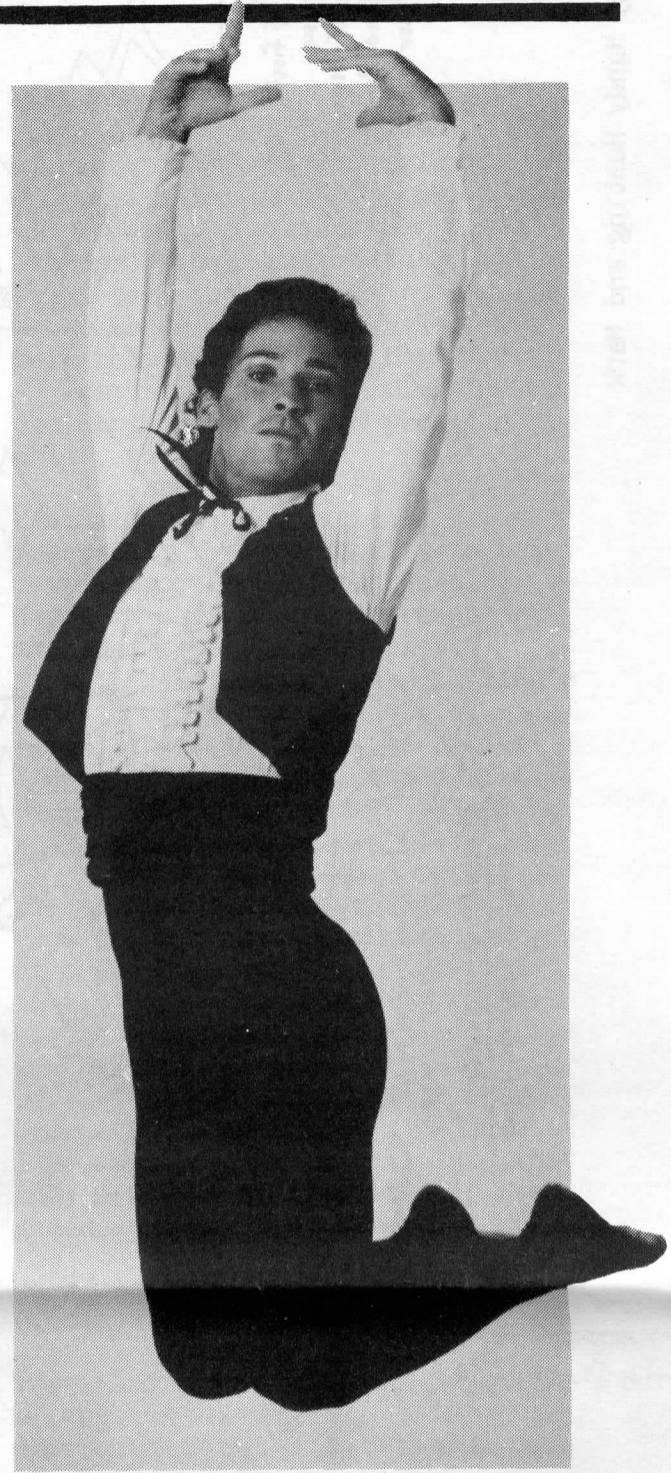
>>>Washington state has established a PRODUCTIVITY BOARD to encourage state employees to contribute to the efficient operations of state government. You may earn a percentage of the documented savings by making a proposal to your unit head. Contact Employee Relations, LIB 3238, ext. 6361 for complete details.

>>>Staff Development Funds. Employee Relations has allocated \$800 per quarter for individual staff development proposals. Contact Employee Relations, ext. 6361 for complete details on deadlines and procedures.

>>>Over 90 LEISURE EDUCATION workshops in everything from Mountain Bike Tours and Wine Making to Proud Body Aerobics and Storytelling are being offered this quarter. Registration takes place in CRC 302 through Friday, October 3, from 8 a.m.-5 p.m. Four evening registrations are offered Monday through Thursday, September 29-October 2, from 5 to 8 p.m. A special registration is set for Saturday, September 27, from noon-3 p.m., at the South Sound Center (Sears entrance). Classes begin the week of September 29-October 3. Call ext. 6530 for complete details.

>>>The monthly PIECE OF MY MIND series begins on Wednesday, October 1, with a lecture by Saint Martin's Vice President Dr. Richard Langill on "South Africa: Is Peace Possible?" The noontime event takes place at the First United Methodist Church on 1224 East Legion Way. FREE. Call ext. 6128 for a complete 1986-87 schedule of talks on subjects that include Star Wars research, law and privacy, youth and age, corrections and more.

>>>Copies of the STRATEGIC PLAN are available at the Library Circulation Desk, the Information Center and the Student Communications Center in LIB 3231. Contact Steve Hunter in LIB 3103, ext. 6363, for complete details.



EVERGREEN EXPRESSIONS CELEBRATES "The Spirit of Dance" during its 1986-87 season with a stunning schedule. "Joint Forces," a dynamic Contact Improvisation troupe from Oregon kicks off the series on Saturday, October 11, at 8 p.m. in the Experimental Theatre. The Keith Martin Ballet (member pictured above), a highly-acclaimed Northwest company, performs on Saturday, October 25, at 8 p.m. in the Experimental Theatre. The Cornish Jazz Faculty Ensemble, eight of the finest jazz musicians west of the Rockies, play original and improvisational jazz at its best on Saturday, November 15, at 8 p.m. in the Recital Hall. Ensemble members have played with such greats as Duke Ellington, Herbie Hancock, Santana and Mose Allison.

Tickets for all Fall Expressions events are \$6 general, \$4 students, senior citizens and Evergreen Alumni Association members (with cards.) Reservations, which are strongly recommended, can be made by calling 866-6833.

Next Newsletter: Friday , October 3

All photos by Photo Services unless noted.

New Smoking Policy Clearing the Air

"Nearly everyone has been supportive of the new Smoking Policy," says Larry Stenberg, director of Community and Alumni Relations. Stenberg, who chaired the DFF that drew up the policy last spring, has also been in charge of its implementation over the summer.

"The only thing left to do," he says, "is to supply the main entrances of all campus buildings with ashtray urns and install permanent signage." Also, the smoking lounges in the first floor lobby of the Library and the third floor balcony of the CAB will be carpeted sometime this fall.

"While the reason for creating the policy was to protect people's health," comments Stenberg, "we also thought it appropriate to make the selected smoking areas as comfortable as possible."

With implementation nearly done, any complaints about smoking should first be addressed to the offending party and, if there is further complaint, to the person supervising the area in question.

"We're all responsible for enforcing the policy," Stenberg says. "It's only as effective as people are willing to cooperate and support it. I've got faith it can work at Evergreen."

Smoking also permitted in enclosed private offices.

