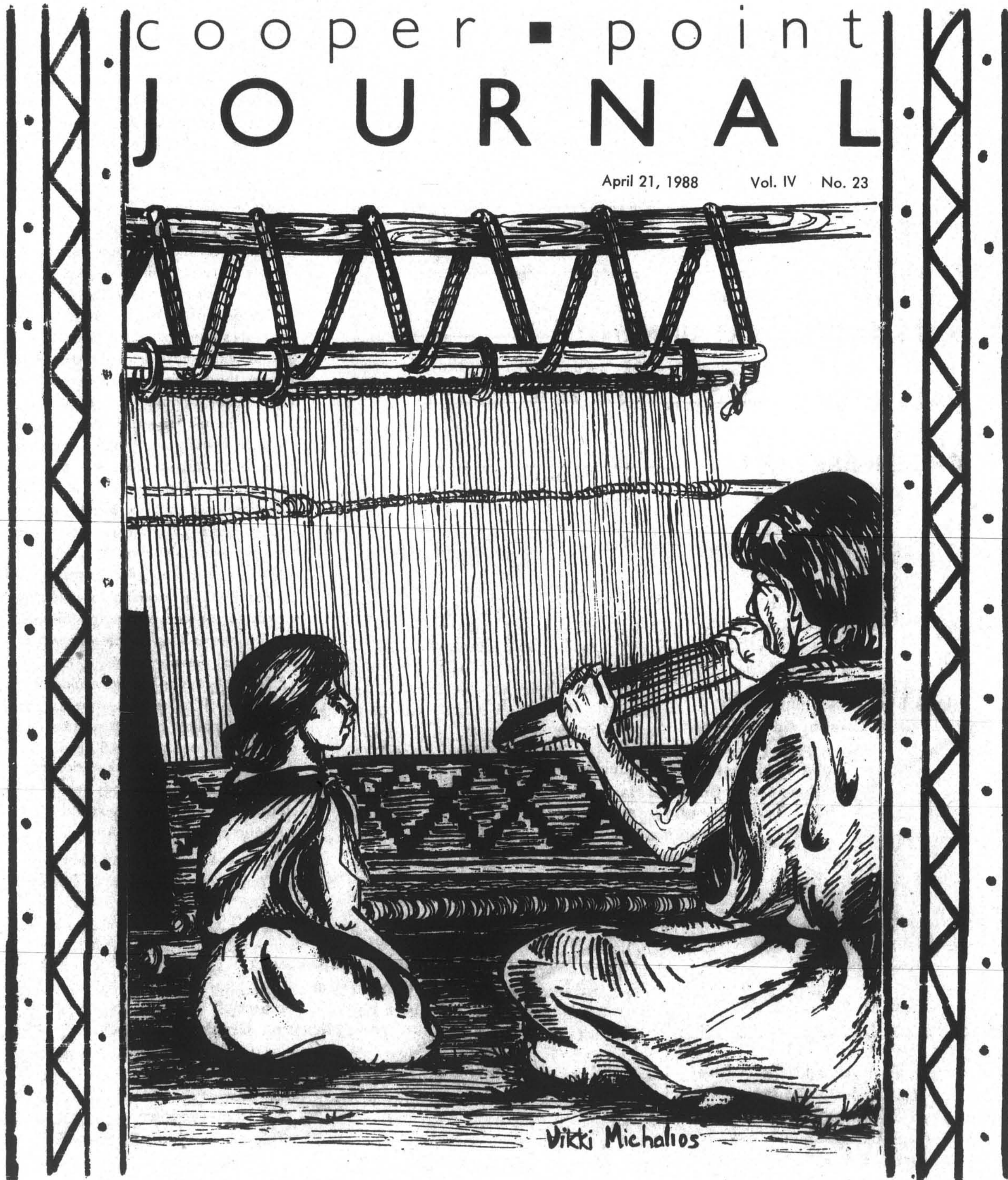


cooper ■ point  
JOURNAL

April 21, 1988

Vol. IV No. 23



Vikki Michalios

Indians educating themselves

# CONTENTS:

FEATURES □ \_\_\_\_\_

LETTERS □ \_\_\_\_\_

POETRY □ \_\_\_\_\_

ARTS AND ENTERTAINMENT □ \_\_\_\_\_

CALENDAR □ \_\_\_\_\_

GREENERSPEAK □ \_\_\_\_\_

## Staff

Janis Byrd, Managing Editor  
 Chris Carson, Ad Manager  
 Susan Finkel, Advisor  
 Julie Williamson, Ad Production  
 Lisa Otey, Business Manager  
 Whitney Ware, Typesetter  
 Aaron Yanick, Distribution  
 Larry Cook, Photo Editor  
 Suzette Williams, Intern Reporter  
 Dawn Weber, Intern Reporter  
 Matt, Calendar Editor  
 Dan Greenberg, Photographer  
 Ellen Lambert, Reporter  
 Darrel Riley, Writer  
 Robert Murray, Production  
 Vikki Michalios, Graphics

Contributors:  
 Jeff Large  
 Cory Meader  
 Phillip Bransford

The Cooper Point Journal is published weekly on the Campus of the Evergreen State College, Olympia, Washington 98505 (CAB 306A); (206)866-6000 ext. 6213 & 6054. Copyright 1988.

**Deadlines for Thursday publication:**  
 Calendar items—**one week in advance**  
 Articles—**Friday at 3:00 pm**  
 Letters—**Monday at 3:00 pm**

## COVER:

by Vikki Michalios

April 21, 1988

## Editor's Note

Perhaps it's the unusually warm and sunny weather that's imbued our community with so much energy lately. Actually, though, I'd rather believe the energy stems from a more interesting and lasting source—I hope what I'm seeing is the Evergreen community truly becoming politicized.

There's certainly enough happening around here to justify my speculation.

For a terrific first item, the students' protest against the HEC Board tests, was certainly successful. Though it cost them a few donuts, these activists did much to thwart the piloting efforts since only eight students chose to participate.

Then there's the graduation pledge the CPJ recently wrote about. Yes, it's probably controversial with some folks (though I'm 110 percent for the pledge myself and will participate in the action on the big day), the point is: students are thinking politically about the future in real, concrete, "doable" terms.

WashPIRG is training people this month to register voters and already they're interviewing people who will be political all summer long.

EPIC is always on the move in political matters, but it's sure a lot more obvious with the group's boycott posters and registrars all over the CAB area.

I hope it's not a fad and we don't de-energize when the sun goes behind the clouds or we encounter our next bureaucratic lightning storm.

Janis Byrd

# News

## Assessment test draws eight

Suzette Williams

Only eight students out of the 20 expected showed up to take the second pilot assessment test Saturday morning. Despite efforts of protestors to dissuade them, all eight students eventually took it.

Five student protestors discussed the test and their views on it with the students signed up to take it. Most students were willing to talk to the protestors. The reasons they gave for taking the test ranged from "I need the money to pay a bill," to "this is my form of protest," to "I wanted to see what the test was like, on what aspect they're testing the school."

All students that stopped agreed that they did not want assessment tests at Evergreen. Protestors argued that by taking the Higher Education Coordinating Board's test, students were "legitimizing the process." Students that took the test, however, felt that they could show that the tests' results weren't valid by taking the test.

"The way Evergreen usually protests things is to have a demonstration. If I take it, maybe that might make a difference, they might look at me. This is my form of protest," explained one man who took the test.

Although they were unable to discourage students, protestor Jonathan Knapp says, "I don't consider this a failure. I think that for Evergreen the assessment tests are scuttled. Eleven people over two weeks just isn't enough to sample. The HEC Board is just interested in a turnout."

The students that protested: Knapp, Holly Eckert, Sandra Davis, Diana Robishaw, and Greg Bye, feel the tests are racist, sexist and don't accurately measure the success of Evergreen's education. "The assessment test legitimizes corporate control

of the university," says Bye. Another says "we're trying to say to students: don't legitimate this."

Steve Hunter, who helped administer the test, was not disturbed by the protestors. "I've been very pleased with the way they went about it," he says. "They (protestors) respected their right to take the test, they've discussed it with them."

Although Knapp says, "I don't think we scared anybody away," some students were unnerved by the protest. "It was really intimidating," one student says. "It was like walking through a picket line. But I've made up my mind, I'm going to take this test."

## Visitor from Brazil

Joberto Macuxi visits us from his tribal lands in northeast Brazil from this week of the 18th through the 23rd.

The Indian center coordinators Barbara Lawrence and Maia Bellon, David Whitener and the Native American Studies Center welcomed Macuxi to our community despite the very short fore warning and their own densely packed agendas. The Yakima elders welcomed Joberto during the opening greeting to start Native American heritage week.

Joberto spoke before the Native American Studies program Monday. He is speaking to many groups around the state throughout the week. The Yakima nation and other tribes have hosted chief Macuxi in ceremonies and exchanges of information of strategies. He may join the panel discussing treaties on April 21st and will certainly return for a dinner and social on campus Saturday April 23rd.

Joberto Macuxi comes from his home in the Amazon at risk of further political and physical harassment to ask North American people to help convince South America to change its policy and action against their indigenous people. He asks us to lend support through letters, financing and publicity pressure to convince the

Brazilian government to leave the Macuxi families and other tribes a place to live and a lifeway.

You can find out more of his activities by calling Jim Felton or David Phillips at 357-3350.

## Earth Fair wants support

by the CPJ Staff

The Environmental Resource Center is looking for people or groups who are willing to help with its first Earth Month.

The ERC is looking for folks who will: put on an event that ties in with one of the theme weeks; co-sponsor an event (or the entire month); write theme-related articles for the "Earth Months News" section of the Cooper Point Journal; and, help with the month's general organization.

If you have any questions or ideas, please contact the ERC at ext. 6784 (Monday, Tuesday, Thursday and Friday afternoons are best), or call Sandra at 866-8699. Earth Month meetings are scheduled every Monday at 5 pm in the ERC office.

## Community

by Pete Bohmer and Marijke van Roojen

On Saturday, April 30th, 1988, there will be demonstrations across the United States to protest the continued U.S. economic, political and military intervention in the affairs of Central America. The Evergreen Community will meet in Library 3500 at 3:00 pm Sunday, April 24, to make formal plans.

On April 30th at 12 noon, the Pledge of Resistance will host a large demonstration and nonviolent direct action at Ft. Lewis. Ft. Lewis has been, and continues to be, an integral part of U.S. warfare and policy—in Viet Nam and also more recently: in 1983, the 75th Rangers, part of the rapid deployment force, invaded Grenada; the 864th Engineer Battalion built airlanding strips in Honduras near the Nicaraguan border and two battalions are currently stationed there.

By going to Ft. Lewis, we intend to once again make clear our strong opposition to the war being waged in Central America by the U.S. government. We demand a halt to U.S. intervention in other countries—in the Central American nations, in Angola and the Middle East—with particular regard to our efforts to destabilize and overthrow the government of Nicaragua. We urge the people of our country to put unrelentless pressure on our government to support and not undermine self-determination for these people and a nations.

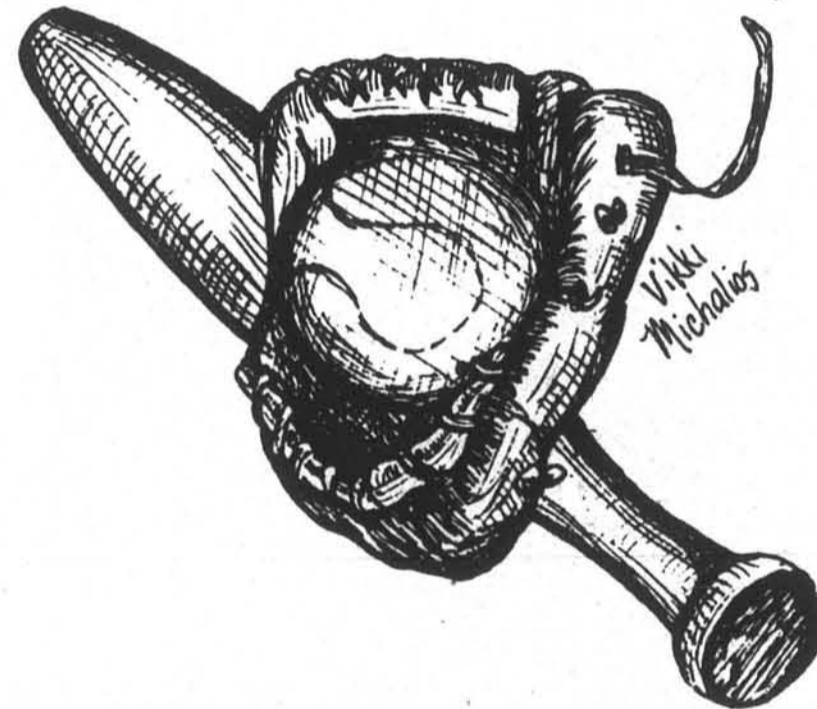
We have requested the base commander to grant us access to Ft. Lewis on that day to provide dialogue and crucial informatoin to the servicemen and women whose lives are profoundly effected by U.S. policy and increased military involvement in Central America. A purpose of our action is to further expose these soldiers to the terror, murder and destruction that our government's activities bring to the civilian population in that region.

The Pledge of Resistance is a network of individuals and organizations

## plans war protest

whose purposes are to halt U.S. intervention in Central America, end all aid to the Contras, end all U.S. aid to the governments of El Salvador, Guatemala and Honduras, and withdraw all U.S. troops and military presence from the area. We feel a deep commitment to non-violent direct action as our mode of protest. We have agreed to abide by the following non-violent guidelines:

- 1) Our attitude will be one of openness to all whom we encounter as we engage in our witness against U.S. intervention in Central America.
- 2) We will use no violence, verbal or physical, towards any person.
- 3) We will not damage property.



by Corey Meader

Recreational Sports is organizing a 6-week coed **Softball League starting May 2nd**, for students, faculty, their spouses, offspring, significant others and remarkable pets.

Grab a sign-up sheet in the Rec Center, a team of 7 or more friends from your program, office, or dorm, and return it by the **sign-up deadline, Friday April 29th**. Monday or Wednesday games (your choice) are played once a week at either 5:15 or 6:30.

Low-key competition will accommodate beginners, klutzs, and avid couch potatoes, so anybody who gets weird if they don't always win should probably just spectate! Call (866-6000 ext. 6530) or come to the Rec. Center for more information.

4) We will not bring or use any drugs or alcohol other than for medicinal purposes.

4) We will not run.

5) We will carry no weapons.

In Olympia, people interested in caravanning to the base will meet at the Capitol Lake Parking Lot at 9:00 am. We will join with the Tacoma caravan and proceed to the base. For people unable to participate in the caravan, join us at noon at the Dupont Gate of Ft. Lewis, Exit 119 off Interstate 5. For more information, call the Peace and Conflict Resolution Center at the Evergreen State College (TESC), 866-6000 X6098. Carpooling for the caravan will be coordinated through this office.

A planning meeting for all interested will be held at TESC Library Lounge on 3:00 pm Sunday, April 24. We hope to see you there!

**CRUISE SHIPS**  
**NOW HIRING. M/F**  
 Summer & Career Opportunities (Will Train). Excellent pay plus world travel. Hawaii, Bahamas, Caribbean, etc. **CALL NOW:**  
 206-736-0775 Ext. 425H

**AVE 4th TAV**

**DUFFY BISHOP AND THE DOGS**

**RHYTHM**

**FRI. & SAT.**  
**APRIL 22 & 23**  
**COVER \$4.00**

**SWEAT BAND**  
**EVERY WEDNESDAY \$2.00**

**210 E. 4th • 786-1444**

## Where's the S&A budget?

by CPJ staff

The CPJ has learned that copies of a March 17 memo sent to all budget members of the S&A Board, placed personally in each board member's mailbox, were removed by "a student" before members had an opportunity to read its contents. The memo, from Kathy Ybarra, Director of Student Activities, concerned S&A Board Coordinator/Responsibility, and read as follows:

"I am very concerned that the S&A Board Coordinator James Martin did not submit a budget

for the S&A Board Operations 1988-89. The announced deadline was March 11. The Coordinator is the sponsor of this budget, acting on behalf of the Board. In other words, the S&A Coordinator works for the Board and is responsible for all duties outlined in the EAC's. This responsibility may not be delegated to other Board staff and has priority at budget time.

Since James is in Mexico, an explanation about why this hap-

pened is not available.

I recommend an Executive Session of the Board be held to discuss this matter upon James' return."

As of 4:00 pm Wednesday, April 20, the S&A coordinator had not submitted his budget proposal, according to Ybarra.

## Grad T-shirts available now

by Kathleen Shaw

They're here! They're here! And just in time for spring.

The 1988 graduation t-shirts and sweatshirts are now on sale in the TESC bookstore. Prices are eight dollars for the t-shirt, twelve dollars for the crew neck sweatshirts, and fifteen dollars for the hooded sweatshirts. Sales tax has been included in the pricing.

All proceeds from the sale of the shirts will go to the senior class gift. This year's gift will benefit the longhouse project.

The t-shirts are available in royal blue, mint green, peach, and "Evergreen Green." Both styles of sweatshirts are teal blue. All are emblazoned with a design highlighting this year's graduation theme, "Education: A Lifetime Pursuit."

According to Judy Huntley, Assistant to the Dean of Enrollment Services, the bookstore is handling the sales of the shirts at no cost to the graduating class. "We appreciate the bookstore's continued support for the graduating class," said Huntley.

Invitations to the commencement ceremonies are also on sale in the bookstore. Proceeds from the sale of the invitations will also go to the class gift.

**Incredible Savings Coming Soon!**

at the **HURT BOOK SALE**

**HOURS**

MON.	8:30-6:00
TUES.	8:30-6:00
WED.	8:30-6:00
THURS.	8:30-6:00
FRI.	8:30-5:00
SAT.	10:00-2:00

**The Evergreen State College Bookstore**

# News

## UMOJA leaders plan trip

April 21, 1988

by Suzette Williams

Eight members of UMOJA, Evergreen's Black student organization, will travel to a leadership conference in Washington, D.C. on April 28. They will return May 1.

The 20th Anniversary Conference and Speical Tribute to John Henrick Clarke is sponsored by the African Heritage Studies Association. It will be held at Howard University, one of the nation's oldest predominantly African-American colleges. The theme for the conference is "Leadership and Development in the African World: A Pan African Perspective."

The conference will be attended by college students from around the country. UMOJA will vote tomorrow to decide which students will attend from Evergreen, but Celina Lilly, Alana Jones and Evan Schumpert are students that have already been chosen. Lilly and Schumpert are co-coordinators of UMOJA.

On the second day of the conference, says Lilly, "there will be panels dealing with issues in the African American community." Panel topics include; dealing economically with the situation in South Africa, getting more black high school graduates to attend college and black leadership.

The conference also features a performance by the Dance Troupe of Harlem and an appearance by Margaret Avery, the actress who played singer Sugar Avery in *The Color Purple*. Professionals from print and audio media, as well as from Black Entertainment Television will give presentations.

The students attending hope to gain a greater perspective of African American culture and to be around other black students.

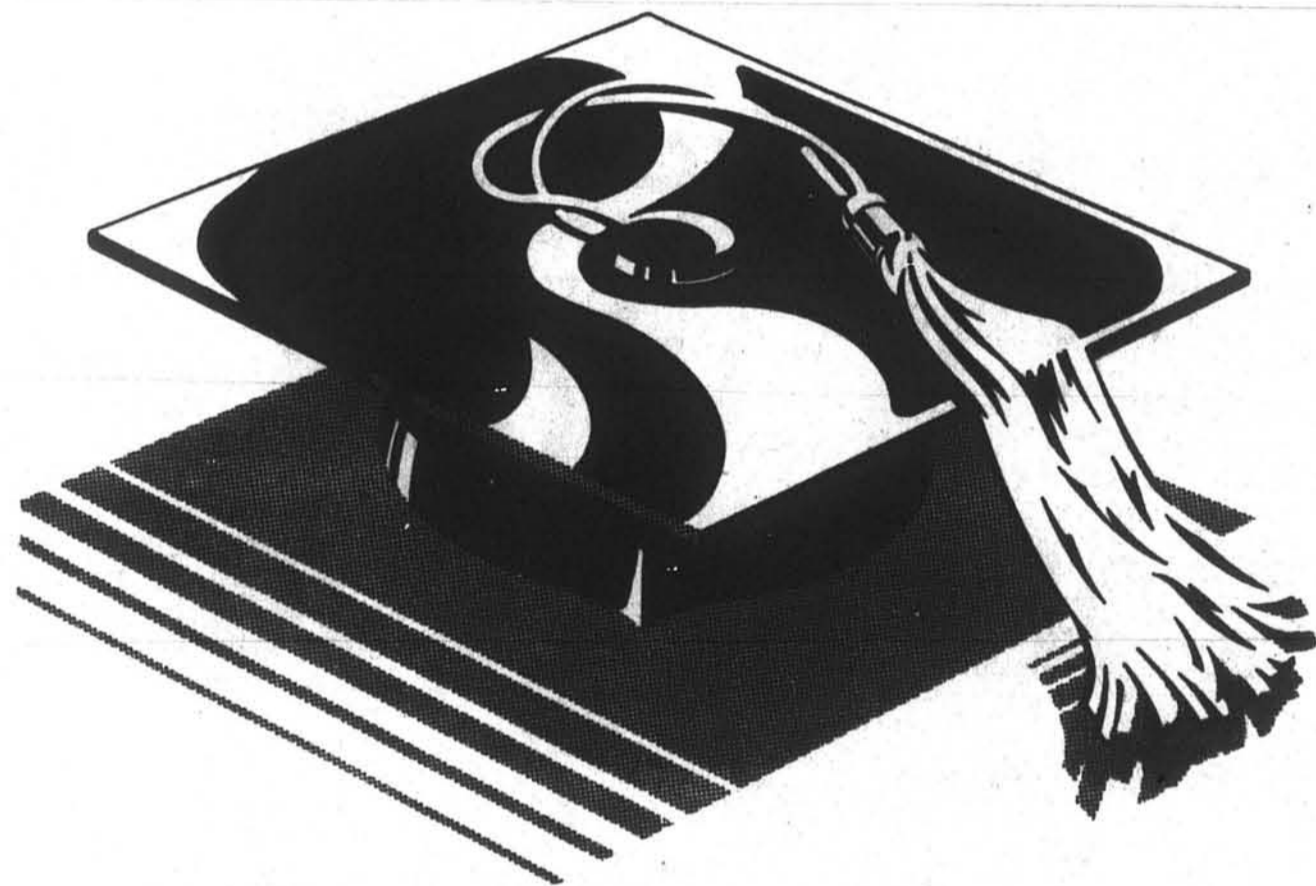
Lilly says, "a lot of students coming from the Evergreen State College have never been around an African American community." Jones echoes this feeling, saying, "It's a great opportunity for me to learn about my culture."

Lilly also hopes to learn more about black history. "The only thing you hear about blacks is we go from the ships to slavery to the Civil Rights Movement. We had history and culture and beliefs before they came over and got us. We

need to learn about prominent people before Dr. King," she explains.

UMOJA hopes to send returning students to the conference so they can bring new leadership skills back to Evergreen.

### OUR STUDENT LOANS MAKE THE GRADE.



Guaranteed Student Loans for graduates and undergraduates. No interest payments until after graduation or withdrawal. Up to ten years to pay back at just 8% annual percentage rate.\* Payments as low as \$50 per month.

Maximum loan amounts: \$2,625 Freshmen/Sophomores  
\$4,000 Juniors/Seniors  
\$7,500 Graduate Students

Ask your school's financial aid office for an application and details. Or call the friend of the family at (206) 464-4767. We're out to make your education more affordable.

\*This rate does not necessarily apply to students with existing loans.

**Washington Mutual**

The friend of the family

Washington Mutual Savings Bank  
Member FDIC

**Washington Mutual  
Financial Group**

April 21, 1988

## CPJ: Does budgets?

by Phil Bransford

Two supplementary proposals have been submitted to the S&A Board concerning the budget for next year's Cooper Point Journal. The first was written by CPJ Staff Advisor Susan Finkel, who has written the budget for the last two years. The second was written by a group of four people, one of whom is an applicant for the position of CPJ editor for next year.

The authors of the second proposal, Sheila Pullen, Clyve Pepe, Carol Poole and Katyn Martin have all been connected to the CPJ in the past but are not part of the current CPJ staff. Martin, a former poetry editor at the CPJ is an applicant for editor.

The move has stirred some controversy concerning how organizational budgets at Evergreen should be constructed.

When asked why the group of four had submitted their supplementary proposal independent of Finkel's proposal, Martin responded: "We felt that students should be included in levels of organization-including budget."

According to Pullen, a former Arts and Entertainment Coordinator at the CPJ, Finkel has discouraged student input concerning the CPJ budget during the last few months.

"She has consistently said that students shouldn't have input into the budget," said Pullen. Pullen also said she has made repeated attempts at

establishing communication with Finkel concerning the budget.

When asked whether she has been open to student input, Finkel responded, "yes."

"It's been an open process. The budget was worked on with all the CPJ

staff. I worked closely with the Business Manager and Editor. Our goals and objectives were circulated outside the CPJ staff."

The S&A Board's decision concerning the two supplementary budgets is pending.

## AIDS Symposium starts

by Janis Byrd

The photo exhibit "The Faces of AIDS" will be featured in the Lecture Hall Rotunda during "The Evergreen State AIDS Symposium: Realities, Issues and Recommendations for the Future." The symposium begins today and will continue through Saturday.

The exhibit comprises sixty 22 by 28 inch portraits that breathe life into the mountains of news coverage and controversy. Jim Wigler's work will bring you back to the real issue: people.

Randy Shiltz headlines the cast of presenters with his keynote address on issues raised in his best-selling book *And the Band Played On*. Other presenters include doctors, healthcare professionals, a molecular biologist and other specialists.

Symposium organizer Ed Wells said,

"Instead of having a conference where people sit and absorb massive amounts of information, we'll have opportunities for everyone to discuss issues and reach for understandings and solutions."

He also stressed that the purpose of the event is to make people aware that AIDS is more than a deadly disease. He said that AIDS is really about people, and that the issues slated for discussion center on people relating to people with AIDS.

The symposium is sponsored by the Olympia AIDS Task Force in conjunction with several community organizations, with support from the Evergreen State College, South Puget Sound College and Saint Martin's College.

Notice



Notice

Pursuant to EAC 174-162-230

### STUDENT ALTERNATE BOARD MEMBERS

FOR

The 1987-1988 Services and Activities Fee Review Board  
are currently being solicited.

#### Applications

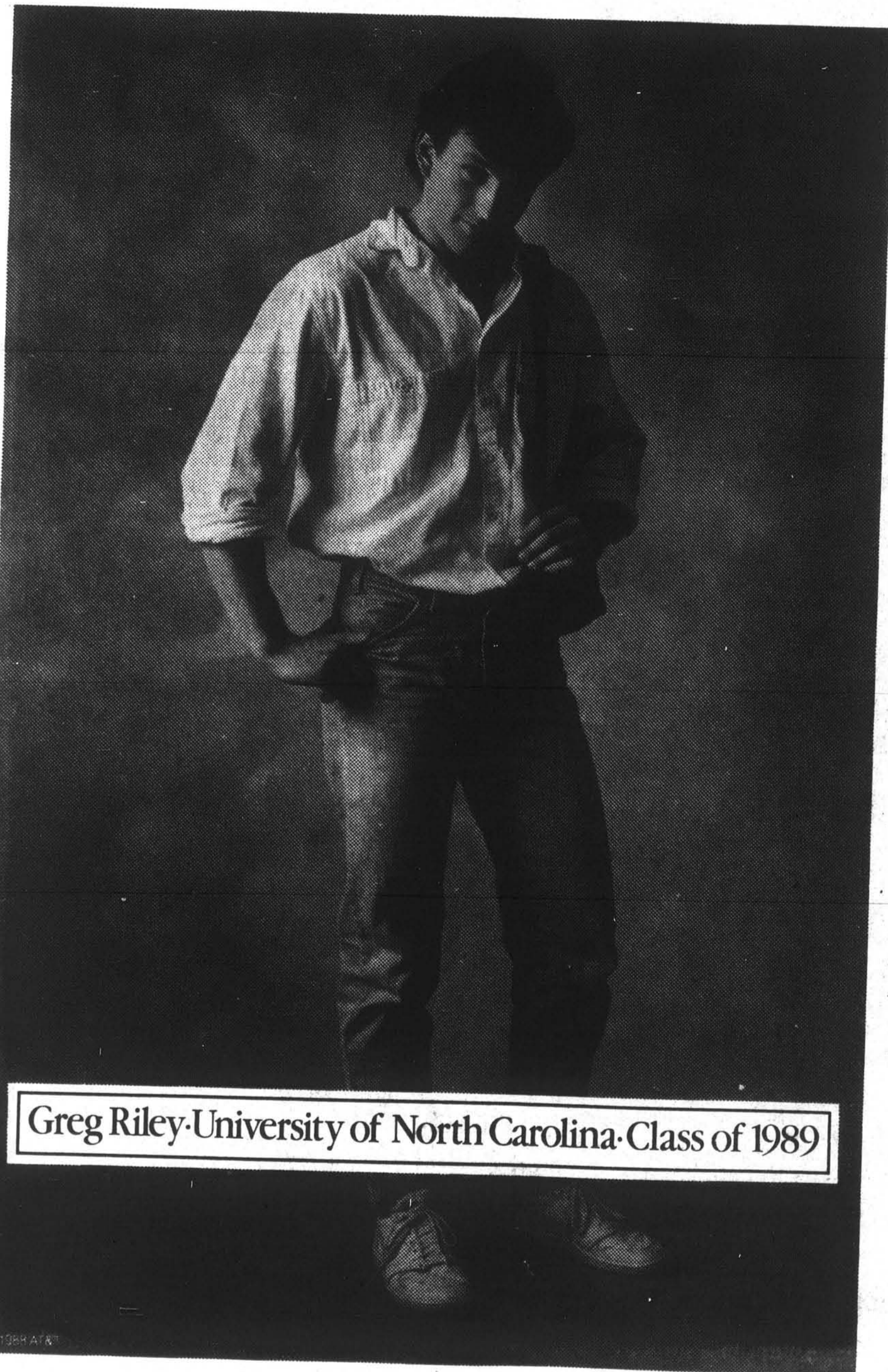
S&A Administrative Office  
CAB 305  
The Evergreen State College  
206-866-6000 x6220

#### Closing Date

All applications must be filed  
with the S&A Administrative Office;  
CAB 305 by 5 p.m.  
Fri., April 29, 1988

Interested Evergreen Students are encouraged to apply regardless of their sexual orientation, race, sex, age, handicap, religious or political belief or national origin.

“Dad was right.  
You get what  
you pay for.”



More people choose AT&T over any other long distance service. Because, with AT&T, it costs less than you think to get the service you expect, like clearer connections, 24-hour AT&T operator assistance, instant credit on wrong numbers. And the assurance that we can put virtually every one of your calls through the first time. That's the genius of the AT&T Worldwide Intelligent Network.

So when it's time to make a choice, remember, it pays to choose AT&T.

If you'd like to know more about our products or services, like the AT&T Card, call us at 1 800 222-0300.

Greg Riley · University of North Carolina · Class of 1989



**AT&T**  
The right choice.

April 21, 1988

# News

## SDI won't work, says Jackey

by Darrel Riley

“The thing you have to understand about the SDI (Strategic Defense Initiative) program, which makes all of these talks so confusing is that the program is not a coherent technology program in the sense you might expect. They way one might approach a challenging technological program is to first, decide if it is feasible or reasonable to attempt, and then decide how to do it, and then do it. SDI has not proceeded in this way. The buzzword for what is missing is an architecture.”

With these words Professor Johnathan Jackey, a member of computer Professionals for Social Responsibility began his discussion of SDI on April 12 at Evergreen. He was invited to give a presentation as a part of the Business of Computers discussion of U.S. government technology policy and issues. The audience was surprisingly sparse, but attentive.

What is SDI? SDI is a jumble of technological idease being developed in an attempt to find a method of shielding the United States from Soviet ballistic missiles. The term “ballistic missile” comes from the fact that these intercontinental missiles follow a path much like a bullet.

“It seems clear that if you want a comprehensive defense, that is one who's aim is to protect most of the people and property in the United States your choice of technologies is restricted somewhat,” Professor Jackey continued.

“In particular you need to develop some kind of boost-phase intercept. A boost-phase intercept is a kind of weapon that attacks missiles as they are being launched. The boost-phase intercept is also a very old idea. It was taught in the late 50's, which was the time when the Soviets were first developing missiles capable of striking

the United States. Needless to say, the prospect of facing a lot of Soviet missiles which would be able to hit targets in the U.S. within a half-hour or so was pretty terrifying at that time, as it remains today. It was the thing you might expect someone to say, “oh can't we have a satellite or something that when a Soviet missile was launched will shoot it down or perhaps even collide with it?” That is the boost-phase intercept idea.

“Basically what happens whenever anyone suggests this is that people say, ‘that will never work because...’ and proceed to give a list of reasons why it might not work. These reasons fall into three classes.

“The first class of reasons is that to have a satellite that happens to be in place when the missile is being launched from some unpredicted location on the earth's surface you need a large number of satellites. You need to essentially cover the earth's surface with satellites so that one will be handy when the launch occurs. This is bad news for the defense. In particular, you need all of these satellites even to defend against the first missile. This argument has never changed, I don't believe there has ever been a good answer.

“The second class of objections to the space idea has to do with the physics of the gun or of the projectile or the collision itself. It gets into the details of how do short range attack rockets, so called “smart rocks,” work? how do lasers work; and what are the limitations on these, and what they weigh, and so on.

“The third objection deals with the command and control of such a system. How are the satellites going to know when an enemy launch has occurred, how are they going to make a decision, that they should be activated, how are they going to pick out the targets, if

you have more than one satellite how are you going to make sure that they don't all gang up on one target and leave all the rest of them to go on, and on and on and on.”

Professor Jackey then spent much of the next 40 minutes explaining some of the many problems with the command and control of the SDI program. He used examples of current command and control systems to show how difficult it would be to build a system which operated without bugs. Because of the necessary reaction, response time for SDI initiation, about 30 seconds or less, a single bug in the SDI system could have devastating consequences.

After Professor Jackey's talk, Mr. John Finnan of the Thurston County Coalition to Stop Star Wars spoke. His part of the discussion was even more frightening than Professor Jackey's. He brought a special umbrella which had 95 percent of its surface removed and showed it to the audience. Ninety-five percent is about 10 percent better than the best SDI proponents claim can be done. A person using that umbrella would get very, very wet. Because of the total strategic absurdity of the idea of SDI, Mr. Finnan argued that SDI is being produced as a defensive system after an American first-strike.

The entire discussion was videotaped so that it would be available for future audiences. If you are interested in knowing more about the issues, please contact Judy Bayard-Cushing of the Evergreen faculty, or Mr. John Finnan, Coordinator, Thurston County Coalition to Stop Star Wars, 636 77th Ave. N.E., Olympia, WA 98506, telephone: 943-0591.

Mr. Finnan and Professor Jackey's video will also be shown on Thurston County's Channel 31 T.V. on May 9 at 7:00 pm; May 15 at 6:00 pm Sunday; and May 19 at 8:00 pm Thursday.

# Notice



# Notice

Pursuant to EAC's 174-162-240 through 250

## COMMUNITY TESTIMONY SOLICITED

BY THE

### 1987-88 Services and Activities Fee Review Board



Jonathon Knapp  
Alternate



Jenny Francis  
Student Board Member



Frank Hartman  
Student Board Member



Fred Hudgens  
Student Board Member

Proposals which include requests for funding from student Services and Activities fees are being reviewed by the Services and Activities Board during its annual allocations process. The Services and Activities Board (S & A Board) is responsible for allocating student S & A Fees to various groups and programs. Unlike most Washington state schools, at TESC, S & A fees are not currently used for debt service of building projects. All S & A fees at TESC are for student S & A programs... and that means people. As part of the S & A Board's process, the following information is offered and interested person's testimony regarding any funding proposal is solicited.

#### PROCESS

Initial presentations of funding proposals to the S & A Board will take place at scheduled times and locations until approximately MAY 3, 1988. Students are encouraged to attend the presentation of any proposal to the S & A Board. Community testimony regarding funding proposals shall be solicited by the S & A Board after it has heard each presentation and asked questions of the sponsor.

WRITTEN TESTIMONY MAY BE MAILED TO:  
S & A Board  
CAB 305 TESC  
OLYMPIA, WA 98505

Written statements should be received by the Board no later than May 8, 1988.

The following list identifies proposals currently registered with the S & A Board. Proposals are publicly posted and on file in the S & A office. The Board bulletin board is adjacent CAB 305. Schedules of presentations to the S & A Board are posted on the Bulletin board. Scheduling changes may occur. Interested parties are always encouraged to confirm the presentation schedule prior to attending by calling the S & A office or checking the bulletin board for updates. As informed testimony is most helpful to the S & A Board's deliberations, interested parties are encouraged to attend presentations or contact budget sponsors to answer questions.

ACTIVITIES BUILDING  
RECYCLING CENTER  
ADMINISTRATIVE RESERVE  
ART GALLERY  
ASIAN/PACIFIC ISLE COALITION  
AUXILIARY ENTERPRISE  
BIKE SHOP  
BUILDING RESERVE  
BUS SYSTEM  
CPJ/STAFF  
CPJ (SUPPLEMENTAL II)  
CRC OPERATIONS SUPPORT  
ENVIRONMENTAL RESOURCE CENTER  
EQUIPMENT R/R  
EPIC  
EVERGREEN INDIAN CENTER  
GRADUATE STUDENTS  
INTERCOLLEGIATE ATHLETICS  
INNERPLACE  
LESBIAN/GAY RESOURCE CENTER

MEChA  
MAARAVA  
OFFICE MOVE  
ORGANIC FARM  
PARENT CENTER  
PEACE CENTER  
REC. SPORTS  
S & A ADMINISTRATION  
S & A BOARD OPERATIONS  
S & A DISCRETIONARY  
S & A PRODUCTIONS  
SCATTERED VOICES  
SISTER COLLEGE  
SLIGHTLY WEST  
SMALL EQUIPMENT  
STUDENT COMM. CTR.  
STUDENTS W/CHALLENGES  
UMOJA  
WILDERNESS CTR.  
WOMEN OF COLOR  
WOMEN'S CENTER

Additional information regarding the Services and Activities Board Allocations process can be obtained by contacting:

Services and Activities Board  
CAB 305  
The Evergreen State College  
Olympia, WA 98505

S & A Board Coordinator  
CAB 305, 206-866-6000 x6220



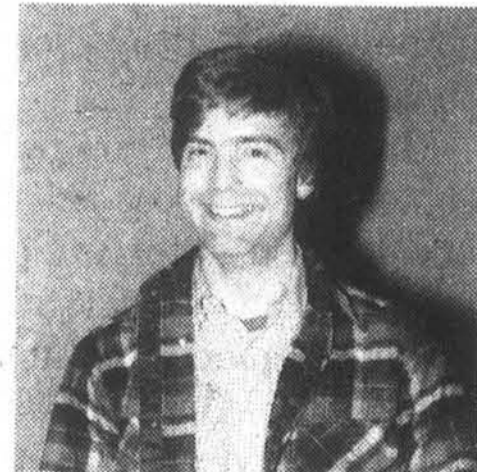
Michael Perez  
Student Board Member



Beth Hartmann  
Staff Board Member



Tani Beckman  
Student Member



Robert Murray  
Alternate

# Trans-National Corporations and the Nuclear Arms Race.



# INFACT leads GE boycott

by Tim Russell

During this week of informative events, INFACT, the grassroots organization that has spearheaded the national GE boycott campaign (with 2.5 million people boycotting in just two years), will be working to sign on the majority of students, faculty and staff, here at Evergreen. This will be the first time that the people within an academic institution will be taking this kind of crucial step, to stop GE's involvement in the military-industrial complex and reverse the arms race.

As volunteers have begun to sign people on the GE Boycott in the CAB, many questions have been posed from the students, faculty and staff here at Evergreen. While there have been mild cases of apathy and ambivalence, there have also been some well thought-out questions which deserve well thought-out answers.

Questions have ranged anywhere from simple requests for a list of GE products to avoid, to demanding an explanation of the workings of SDI. But by far the most frequently posed question, is "why boycott just GE, there are so many other weapons contractors?"

As was discussed in the January 21 issue of the CPJ, it is important to make clear that while INFACT has launched the Nuclear Weaponmakers Campaign with a focus on GE, a primary goal of the campaign is to build public awareness of the role that all nuclear weapons corporations play in the military-industrial complex. Public awareness and direct economic pressure are the means through which we can slow the momentum of the arms race.

Lt. Commander William Withrow (Ret.), who now works for the Center for Defense Information, recently stated, "I believe the GE Boycott will be successful because it will make the American public aware of the facts. And that will be the beginning to the end for the nuclear weapons industry."

Already, three major weapons contractors have felt that pressure and left the industry. Monsanto and Union Carbide have decided that it would be

more cost efficient not to renew contracts in the nuclear weapons industry. More recently, Dow Chemical has declined to renew their contract at the Savannah River plutonium producing plant for many of the same reasons. These changes in corporate policy are a direct result of the pressure that the public is bringing to bear on military contractors.

But I have still left the question unanswered: "Why GE?" There are numerous answers to this question each one further concluding that on top of being a major weapons contractor, "... GE is a prime example of how weaponmakers have influenced and shaped the development of nuclear weapons policies and strategy for over 40 years," states INFACT's recent publication.

A few of these examples are:

1) GE has been involved in nuclear weapons production as far back as the testing of the first bomb.

•GE was the first contractor to run Hanford.

•GE had a representative on the Stimson Committee, to advise Truman when and where to drop the bomb.

2) GE's board of directors is a good example of corporate connections for power and profit and the revolving door. To name just two of the nineteen: •David Jones, Ret. Chairman of the Joint Chiefs of Staff. •William French Smith, Ronald Reagan's first Attorney General.

3) GE is ranked as the third highest defense contractor with contracts totaling \$5.8 billion in fiscal 1987.

4) GE is also the tenth largest 'Star Wars' contractor.

These are just a few of the reasons why General Electric, "The Good Things Company" was chosen as the target company. Certainly another major concern which deserves further elaboration, is Jack Welch's (GE CEO) labor relations (or lack thereof). It will suffice to say, quoting Business Month, March 1988, "... he has closed 73 plants and facilities and eliminated 131,000 jobs through divestiture, attrition, dismissal, and contract buy-outs, earning him the moniker Neutron Jack,

after the bomb that destroys people but leaves buildings standing."

I hope this short essay may have answered some of your questions about the campaign, and why GE. If there are other questions which I have skipped over, and I'm sure there are, or if you are interested in finding out how you can help put pressure on the nuclear weapons industry, please call the Peace and Conflict Resolution Center at ext. 6098. Or for information on INFACT's national campaign, call (818) 281-5953, or write to: INFACT, PO Box 3223, South Pasadena, CA. 91030.



INFACT and the Public Affairs Group at KAOS present:  
**Trans-National Corporations and the Nuclear Arms Race**  
 Tune into KAOS 89.3 FM beginning the week of April 18, 1988 for interviews and informational audio presentations.

**Sunday, April 24: 7-10:00 pm, LH 3**

Movie *Weapons Bazaar*. Retired rear Admiral Gene LaRouge, director of the Center for Defense Information narrates a walk through a Nuclear Weapons Contractor's Convention. (30 min.)

Movie *Controlling Interests*. A look at Corporate involvement in the Third World, with interviews from Corporate heads. (30 min.)

Movie: *Amazing Grace and Chuck*. A little league pitcher and a national basketball star stop playing sports in a personal protest of nuclear weapons. (2 hrs.)

All films are free.

**Monday, April 25**

At noon in the CAB pit, KAOS airs a live forum with a GE representative, an INFACT representative and an Evergreen faculty member.

At 3:00 pm, Ralph Nadar speaks on the Corporation Phenomenon on Kaos.

At 6:30 pm and again at 9:00 pm, the film *Silkwood* will be shown by the Olympia Film Society at the Capitol Theatre. A true story, award-winning actress Meryl Streep plays the role of the title character Karen Silkwood, who dies in a mysterious car crash while on her way to deliver evidence of wrong doing at the Kerr-McGee Nuclear Power Plant.

\$2.50 for film society members, \$4.00 for non-members.

# GE: There are alternatives

by Lillian Ford

GE has a long history in the Northwest, marked heaviest by its operation of Hanford Nuclear Reservation from 1946 to 1964. GE became prime contractor at Hanford following WWII; in doing so, it took over the town of Richland, where the 51,000 Hanford workers and family members lived. It hired its own police force, and paid the city police's wages; it rented out homes and leased commercial properties; it required all businesses to gain its permission to operate and to tithe the company. Workers were thwarted in unionizing attempts, and black people were denied employment except as construction workers who lived in segregated temporary camps.

GE—Hanford's effect spread well beyond Richland. Leaky, thin-walled drums and even cardboard boxes dumped in open pits have seriously contaminated the soil and have made the Columbia the most radioactive

river in the world. Gaseous emissions have scrambled genes and spawned countless thyroid cancers throughout the area. The most notable (reported) emission occurred in December 1949, when GE *intentionally*, yet secretly, released 5,039 curies of radioactive iodine 131. (This amount is a thousand times greater than that released at Three Mile Island.) Their stated reason: to test "instrumentation and monitoring techniques."

deny their role in creating nearly half the nation's weapons-grade plutonium. This stockpile of apocalyptic power affects everyone: it punctures the dreams of middle-class American pubescents; it keeps Kenyans in the Del Monte fields, black South Africans in jail and Palestinians in refugee camps. It kills many already and gives a few the ability of ultimate blackmail.

GE left Hanford in 1964, yet they maintain a strong presence in the Northwest. An operator working GE's toll-free information line (1-800-626-2000) counted 63 GE offices in the state. She refused to count the additional franchises, service outlets and independent dealers, but said there were sixteen within a 35 mile radius of the Westside of Olympia.

However, we needn't look farther than Bayview to find a piece of the company. Light bulbs, extension cords, hair dryers, alarm clocks all bear the GE swastika. GE's subsidiary, RCA, has its stamp on records and audio-video equipment: if you watch NBC (an RCA affiliate) you'll be talked at by a GE employee.

Despite its wide reach, boycotting GE is definitely doable. In fact, the world would be fairly simple if it was the only company needing a boycott. However, many alternatives to GE products are produced by equally offensive corporations. Nonetheless, I'll end this piece with an abbreviated list of **alternative brands (in bold type)** to products made by nuclear corporations—and some products to avoid:

Auto parts—**Champion, Purolator, Midas, Sargent, Turtle Wax**

Avoid: AC spark plugs, Autolite, Bendix, Big Beam emergency lights, Blue Max waxes, Carlite glass, Car-X mufflers, Delco, Double Eagle, Essex, Fisher, Fram, Fuller transmissions, Goodyear, Koni, Marathon batteries, Max Air, McIntosh, Monroe, Motor-

See page 14



Photo by Dan Greenberg

Found in Evergreen basement.

June Casey was one of the human subjects of this experiment. While a student at nearby Walla Walla, June's hair fell out (it has yet to return) and she began feeling lethargic soon after the tests. Later she lost two children—one a miscarriage and one a stillbirth. When the reports of the 1949 release were disclosed in 1986, June confronted GE's Board at their annual stockholder meeting. They, of course, denied responsibility. However, they do not

You can make a difference as an aware consumer. Let's make TESC GE free Co-sponsored by the Peace Center, EPIC, and the ERC. For more info, call 357-4152, or ext.6098.

Editor's note: The material in this section was written by students from INFACT and EPIC. Each author is responsible for the information and editorial contents of his or her article.

continued from page 13

craft, Motor Whell, Mr. Goodwrench, Nichoff, OE mufflers, O.K., Rameco, Speedy, Muffler Kind, SWF, Sylvania headlights, Teledyne, TRW, Walker Batteries—Duracell, Panasonic, Ray-o-Vac

AVOID: Eveready, Perma-cell, AT&T, Marathon

Cassette Tapes—Aiwa, Kenwood, Norwood, Pioneer, Sony

AVOID: General Electric, IBM, Lanier

Clocks/watches—Bulova, Elgin/Waltham, Gruen, Ingraham, Seiko, Seth Thomas, Sunbeam, Timex, Westclox

AVOID: GE Snooz-Alarm, GE Telechron, Longines, Magnavox, Norelco, Speidel, Wittnauer

Computers/calculators—Apple, Commodore, Compaq, Equity, Leading Edge, Kaypro, Sharp, Toshiba, Zenith

AVOID: AT&T, Calcomp, Codex Fastalk modems, Harris, Hewlett-Packard, IMB, ITT-QUME, Lanier, Texas Instruments, Universal Data Systems, UNIX, Vectra

Electronics—Emerson, Fisher, Panasonic, Pioneer, Norwood, Sanyo, Sony, Zenith

AVOID: AR speaker systems, GE, Magnavox, Motorola, Philco, RCA, Sylvania

Light Bulbs—Duro-Lite, American Handicapped Workers

AVOID: GE, Sylvania, Westinghouse

Oil—Quaker State, Penzoil

AVOID: Amoco, Ashland, Arco, Chevron, Exxon, Genoco, Gulf, Imperial, Marathon, Mobil, Shell, Tenneco

Personal Care Products—The Olympia Food Co-op, Radiance and the TESC bookstore are the only places I know of in town that carry personal care products that have not been tested on animals—good brands are Aubrey, Kiss My Face, and Nature's Gate

AVOID: Norelco, Philips, Schick, Shower Massage, Water Pik

School supplies—Champion, Hammermill, Mead

AVOID: Eaton, At-a-Glance notebooks, Corrasable Bond, Sheaffer, Bostitch, Duo-Tang, Fome-Cor mounting board, National, Teledyne-post drafting paper.

Video Tapes—Aiwa, Mitsubishi, Sharp, Sony, Zenith

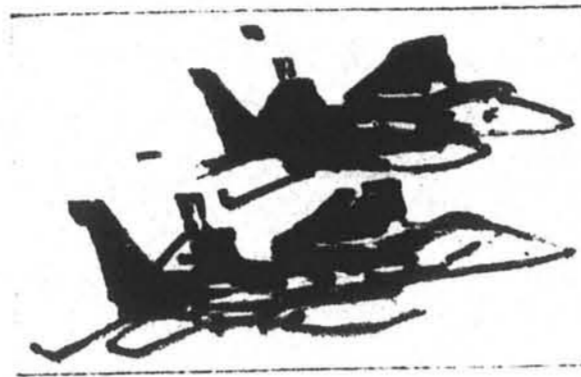
AVOID: GE, Magnavox, Philco, RCA, Sylvania

The alternative brands are definitely non-nuclear; I've also left out of this category any that I knew to be made by grossly exploitative (i.e. human/animal rights, ecosystem destruction) corporations. Those listed to avoid are made by nuclear contractors or their subsidiaries.

This list is obviously incomplete; more information is available at the Peace center, Lib. 3224.

## A DAY IN THE LIFE OF THE PLANET

TODAY WE SPENT...



over \$2.5 billion on military weapons.



43,000 children died for want of adequate food and health care.

General Electric. Shaping Nuclear Weapons Policies for Profits Research and Competition.

**Sometimes the truth hurts. But what many people don't know about America's third largest corporation can kill us all.**

that began during the development of the atomic bomb and thrives today, making GE the #3 Star Wars contractor in 1986

At INFAC, we know we can change GE's life-threatening practices. Just like we changed Nestle's — with grassroots action and economic pressure. Already 1 out of every 100 consumers is boycotting GE to stop their nuclear weapons work.

*The GE Boycott is the next critical step to stop nuclear weapons. It is the single most important step to educate the American public about the power of the corporate weaponmakers — not just GE, but by implication, all the others.*

—Helen Caldicott, MD

---

**YES, I'll boycott GE!**

Send me \_\_\_\_\_ copies of *INFAC Brings GE to Light* at \$6.95 each plus \$1.50 for postage and handling for one and 25c for each additional book.

Let me know how I can spread the GE Boycott in my community.

I'm interested in joining INFAC full-time to organize for the GE Boycott.

I've enclosed \$ \_\_\_\_\_ to help expose the real GE.

Name \_\_\_\_\_ Street \_\_\_\_\_

City \_\_\_\_\_ State \_\_\_\_\_ Zip \_\_\_\_\_ Telephone \_\_\_\_\_

**Return to: INFAC, 256A Hanover St., Boston, MA 02113 or call (617) 742-4583**

# Christians create support group

by Dawn Weber

*"Open our eyes Lord  
We want to see Jesus  
To reach out and touch him  
Say that we love him  
Open our ears Lord  
and help us to listen  
Open our eyes Lord  
We want to see Jesus."*

The Evergreen Students for Christ begin their meetings by singing songs and clapping their hands in celebration of their strong belief in Christianity. They find support among their peers who share the same faith. The group, consisting of about 20 people, formally

commenced last Fall. "God wanted to have a community of students to worship together and get to know Jesus better," said Greg Smith, one of the coordinators.

A minority group on campus, the members feel most students accept them but don't really try to understand them.

"I think that most people, when you talk with them and explain who you are and what you believe they're pretty accepting, but until you do that you hear the most outlandish misunderstandings and misconceptions about what Christianity is," said Christopher J. Smith.

Renee Carpenter finds a conflict in her science program when they discuss nature and God and interpreting the

Bible. "They think Christianity supports the exploitation of nature and the destruction of earth and it supports man using the earth however he wants. I don't think the Bible gives us the right to go and destroy everything for our own purposes. They're not really looking carefully enough, they have the wrong view and they really believe that's what the Bible means. It's hard for me to tell them no, that's not what it really means."

"What I find in my program," said Chris Bader, "is that anytime anyone tries to make any kind of statement they don't really have the backing of facts for, everybody just jumps right on them. When it comes to the Bible, they'll make the most general assumptions and not even think twice about it. I asked a person after class have you ever read it (the Bible), because it's obvious that you don't believe it or you don't believe me. He said no, he just never wanted to take the time. I said not to assume it's just wrong and it's an important enough thing that I think you should take the time. But people don't feel like they need to, they just make these mass assumptions, these huge generalizations but they never even try to back them up or never even give the Bible a chance."

"There's an old saying that you can't put anything down until you pick it up first," said Sean Hollen, "and I think that some people don't pick it up enough."

In the traditional fashion of Christianity, they try to maintain a lifestyle that is in strict accordance with the Bible. To them, a Christian is more than someone who loves God and believes in Christ.

"I think to be a Christian you need to have a relationship with the Lord, and to read his word and to try and follow His will," said Renee. "Give your life to Him; you know he gave His life for you."

"It's an active relationship," said Christopher. "You need to seek not only to know him, but to live the life. It's a belief in God, it's a commitment to God, and a serious attempt to hear and feel God active in your life and to react

See page 20

**A College Degree and no plans?**

**Become a Lawyer's Assistant**

The **UNIVERSITY OF SAN DIEGO**, offers an intensive **ABA Approved** post graduate 14 week **LAWYER'S ASSISTANT PROGRAM**. This Program will enable you to put your education to work as a skilled member of the legal team.

---

A representative will be on campus

**THURSDAY, APRIL 28**  
**9:00 - 11:30 AM**  
**LIBRARY BUILDING ROOM 1406**

For more information contact your career center at:

**866-6000 x6193**

---

University of San Diego

Lawyer's Assistant Program  
Room 318, Serra Hall  
San Diego, CA 92110  
(619) 260-4579

Name \_\_\_\_\_

Current Address \_\_\_\_\_

City \_\_\_\_\_ State \_\_\_\_\_ Zip \_\_\_\_\_

Current Phone # \_\_\_\_\_

Permanent Phone # \_\_\_\_\_



# Letters

## Safe art

Dear Ed Trujillo and Marianna Kawaguchi,

Your apology for the picture of Louis Jordan doing his trademark dance step sounds like the beginning of a self-censorship campaign that will mean bland and inoffensive bulletins of Evergreen Expressions.

We are reminded of the scene in *A Midsummer Night's Dream* where the cowed workmen apologize for and alter their play lest they offend the royal assemblage.

Will you be practicing "safe art" from now on?

David Schwartz  
Maureen Yocum

## Help DTF

Help! I need your help. Evergreen needs your help. I am supposedly representing students on this campus in the Grievance and Appeals DTF and I don't feel I can do that without your help. I need to hear from you. How do you feel about the rules and the penalties?

We had a governance day on this campus and I came away with some positive feelings. Maybe students do care about what happens. Maybe the apathy I keep hearing about really isn't there. Several students expressed interest in the DTF and our meetings. They said they would come. But on Friday—nobody came—and again on Monday—nobody came.

It hurts to think that nobody cares. Could it be that students think that these rules won't affect them? If that is indeed the case, you are wrong! Everything that happens on this campus—especially regarding gover-

nance, affects you. These things affect the public perceptions of Evergreen, which reflect on you as a Greener.

Please, please, please come and help us: **Friday, 12:30-2:00, 3121; Support Group Friday, 2:30-on in the CAB pit; and Monday, 4:00-5:00 in 3121.**

Maureen Petan

## Don't drink wine?

Dear Evergreen Community,

Recently I was approached by two Evergreen Students concerning the boycott of St. Michelle wines.

I was presented with written information about the farm workers' issues. Outlined were some attempts by the workers to unionize and managements' response by firing some employees. Along with this information I was told that if I do not support this boycott there will be a boycott against my business.

This strikes some old chords for me. I came from a background of Evergreen myself. Over the years I decided how to run my business keeping in mind my responsibilities to the environment, employees, community, third world countries—the list goes on. It became very confusing, overwhelming, and my business was suffering from the lack of clear direction. I had allowed myself and my business to become a victim in a no win situation. In the past few years I have begun to reevaluate my personal and business attitudes. I am finding that these attitudes conflict with some peoples' ideas.

I have decided not to involve my business in boycott activities. If enough customers stop ordering a product then I change the product. What bothers me the most is how far away from the issue this has become. I am not the one managing the farm workers. My understanding of a product boycott is to boycott the product not put out of

business those who choose not to participate in this cause. I have a strong feeling that one of these students has some big issues with business and capitalism and this cause has become a vehicle to vent some of those feelings.

I believe in running my life with myself and others on a win-win basis. I don't see that scenerio happening in this situation. I know that what I am doing, running this business and participating in this community, is very positive. I'm trusting that people can decide for themselves without being threatened by peer pressure for approval or the fear of rejection to make their own decisions about what they will drink and where they will eat.

Jim Mead  
Urban Onion

## Who speaks ?

Dear Cooper Point Journal,

I'm writing in response to the comments by the editor and to the "Greenerspeak" section. I too, am a greener and deserve to speak. I think the Greenerspeak was a grave misrepresentation of the level of student participation on governance day.

I went to Marilyn Frasca's writing workshop in the morning and discovered different ways I've reacted to rules throughout my life. I later went to Rita Pouglaes' workshop on student involvement, where we talked about reasons for apathy, DTFs and past student involvement at Evergreen. The workshop lasted about two hours, turning into an exciting brainstorming session. We exchanged and wrote down ideas addressing the issues of finding more effective ways to get information out to students, incorporating discussion about governance into programs and into Orientation Week for first-year students.

# Letters

## CPJ wins

Students on the staff of the Cooper Point Journal were among the winners of more than 500 entries in the 1988 Washington Press Association's scholastic journalism competition. This award for excellence for the staff of 1987-88 is the second one the Cooper Point Journal has won in two years.

continued from page 16

tion Week for first year students.

As a second-year student who is just starting to want to find out about campus issues and be more active, governance day was extremely empowering for me. I hope students who aren't currently involved will go to the SCC to find out how they can begin to act on some of the recommendations that came out of governance day.

Valerie Gray

## Sister College

Dear Editor,

Although we appreciated the attention the Sister College Project received in the April 7 edition of the CPJ, we would like to clarify some of the inaccuracies of the article.

A) It is the Sister College Project, not Innerplace, that sponsors such happenings as the Oscar Romero Event

and the accompanying Guerrilla Theatre.

B) The group that meets Wednesday nights at 5:00 pm in Library 3225 is the Sister College Project, not Guerrilla Theatre.

Thanks to everyone in the Evergreen community that attended and supported the Romero Event.



**SEASON  
OPENING**

**THURSDAY, APRIL 28TH**

**HOURS:**

- THURSDAYS
- FRIDAYS
- SATURDAYS
- SUNDAYS

**10 AM TO 3 PM**

**N. Thurston & Capitol Way**

**Downtown in the Market District**

**"A FUN, FRIENDLY PLACE  
TO SHOP, EAT & VISIT"**



**A1 HOUR MEMORY PHOTO**

1 HOUR SERVICE, C41 PROCESS  
DEVELOP & PRINT  
135 - 110 - 126 & REPRINTS

**— FREE ROLL of FILM —**

WITH DEVELOP AND PRINT ORDER  
(OFFER ENDS APRIL 30TH)

316 N. CAPITOL WAY BY FARMER'S MARKET • 754-8101

ALL WAYS TRAVEL SERVICE, INC.



943-8700  
Harrison and Divison

## Woofers needs actors

by Janis Byrd

Young and old alike are in for a treat when local playwright Bryan Willis's *Woofers The Psychic Dog* makes its West Coast premiere late next month.

But long before the premiere, Willis said he'd like to recruit local actors for the production. Auditions are planned for 7:00 pm May 3. He's looking for 10 actors: men and women of all ages.

"I want to get Evergreen actors, and of course," Willis added, "I want an Evergreen audience."

Raised locally, Willis went to New York to get his start where he wrote and produced two plays off Broadway. *Woofers* was co-written by Willis and two fellow students—the play was written while they worked towards their master degrees at New York University.

*Woofers* is a funny show, but has plenty of social commentary, according to Willis. Using a minimum of sets, Willis said the play is theater work that focuses on acting.

"*Woofers* is a real crowd pleaser. There are two kinds of people in the world: those who don't like it, and those who love it." With a smile, Willis added that everyone loves a love-story with traditional good-guys and bad-guys.

Willis maintains that the story has plenty to challenge Evergreen social theorists, yet is fun enough to please children.

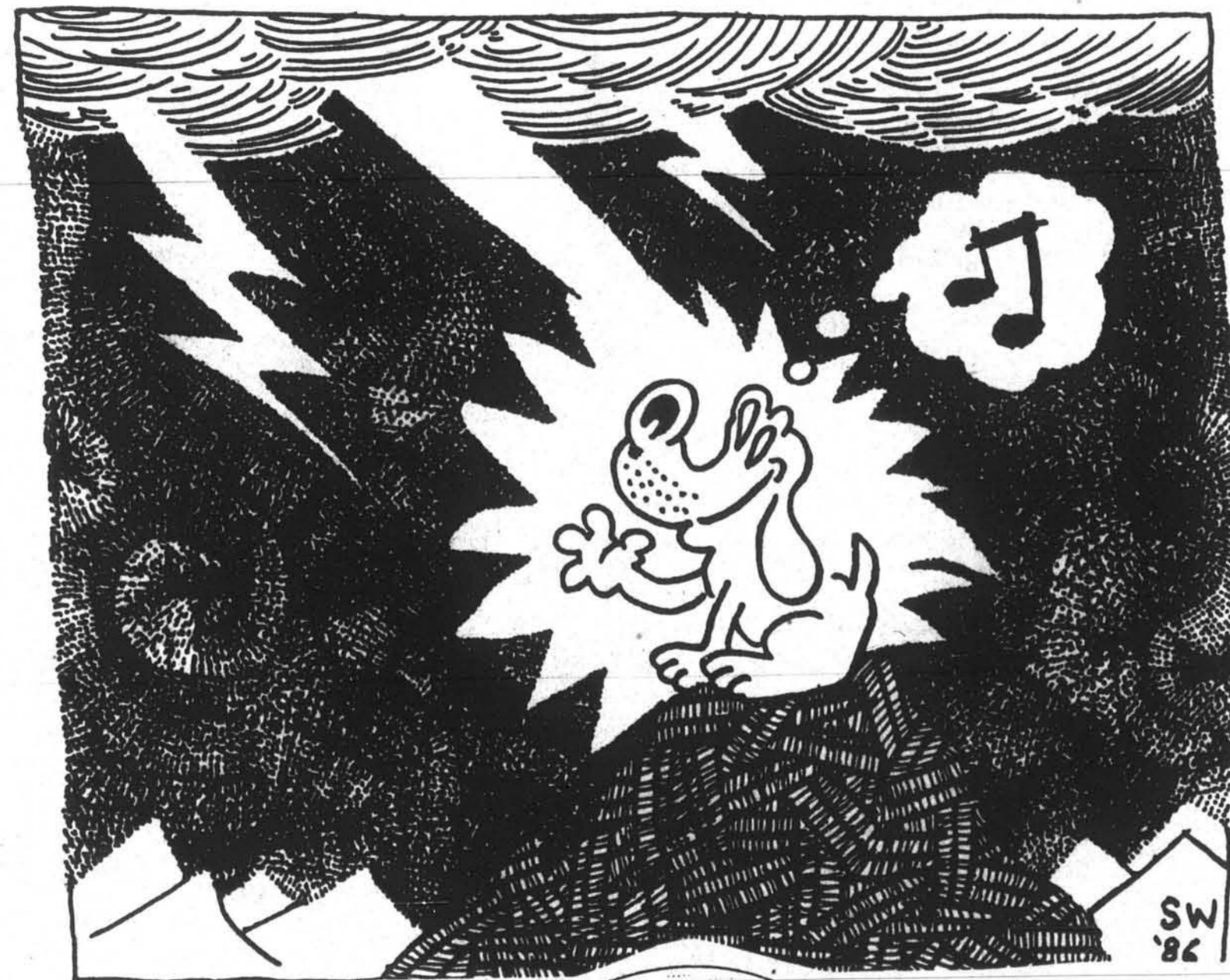
"It's whimsical, yet has great meaning," he said.

New York director Traci Carlisle and four members of the original cast will be involved in the production. "It's a good opportunity for local people to work with professional actors and director."

Auditions will be held at 7:00 pm, May 3 in Room C of the Olympia Community Center, located at 222 N. Columbia. For more information call 754-5378.

# WOOFERS

the PSYCHIC DOG!



Olympic  
OUTFITTERS  
LTD.

**ANNEX IS NOW OPEN!**

**\$SAVE \$SAVE \$SAVE**  
Clearance Items, Irregulars  
and Close-Outs!

• Shirts • Sweaters • Lifa Underwear  
• Jackets • Walking Shoes • Swim Suits  
and Much Much More!

Located at: 419 South Water St., Downtown Olympia  
(Across from Sea-First Drive-Up Window) Hours: Tues.-Fri. 11 to 7  
Sat. 10 to 5  
**352-8578**

## Heartfelt message

by Dawn Weber

Danny Deardorff, a Seattle based vocalist-guitarist known for his original folk and pop compositions will be performing at the Evergreen campus. The 35-year-old artist contracted polio at the age of 17 months. He writes songs and performs from a wheelchair, but both critics and audiences agree that his heart walks all over a concert hall.

His music is not an avenue for commercial competition, rather it delivers

a heartfelt message: "My message is that the human spirit is what we are, and that a spirit can't be disabled, a spirit can't be imprisoned and because of that our dreams can come true. We have to know that. Bottom line, that's what I'm trying to say."

Prior to his concert, he will spend from 4:30-5:30 pm in Library 2127 giving a free lecture on the ups and downs of his career as a disabled artist. Deardorff will be in concert at 7:30 pm on Friday, April 29, in the Library Lobby. Admission is \$5.00; children under 12 are admitted free. For more information, contact the Office of Student Activities, ext. 6220.

## Greek eating

by Suzette Williams

Springtime in the Mediterranean comes to Evergreen in an evening of Greek cuisine, entertainment and celebration.

The festival menu features exotic Greek delicacies such as Kota Kapama (chicken cooked in white wine), Sovi Lake (selected grilled meats on skewers), Dolmades (stuffed grape leaves), and Baklava (nut-filled pastry in fragrant syrup).

Guests will also be treated to a special performance by the Greek dance troupe, Nisiotes "Islanders." For more daring audience members, the troupe will also offer Greek dance instruction.

The festival begins at 7 pm Saturday, April 30, in Library 4300 at TESC. Tickets are \$15.00 per person and must be purchased by April 22. For more information call 866-6000 ext. 6192.

To purchase tickets, make checks payable to the Evergreen College and Community Organization and mail to: TESC Cab 214 Olympia, WA 98505.

Notice



Notice

Pursuant to P Act 174-162-230

INSTITUTIONAL  
STUDENT POSITION AVAILABLE

### S & A BOARD COORDINATOR TRAINEE

For

The 1988-1989 Services and Activities Fee Review Board  
is currently being solicited.

INTERESTED EVERGREEN STUDENTS ARE ENCOURAGED TO APPLY  
REGARDLESS OF SEXUAL ORIENTATION, RACE, SEX, AGE, HANDI-  
CAP, RELIGIOUS OR POLITICAL BELIEF OR NATIONAL ORIGIN.

#### JOB DESCRIPTION

The S & A Board Coordinator serves as the S & A Board's staff and is accountable to the Board and the Director of Student Activities. Duties required by this position include: collaborate with the Board in the selection of new Board members; direct, organize, and provide information and services that the Board requires; conduct research projects; organize Board orientation; prepare Board's operation budget; organize and moderate all meetings; prepare agendas, retain a record-keeper, disseminate information concerning actions of the Board; assist groups applying for funds.

#### SKILLS AND QUALIFICATION

This position is to be filled for Spring Quarter 1988 only as a TRAINING OPPORTUNITY for 1988-89 S & A Board. Successful applicant will be expected to attend and observe part or all of each of the Spring Quarter Board meetings and consult with the current Coordinator and Administrative Coordinator. Applicants should have a good understanding of Evergreen's policies and practices. Previous experience with the Board would be helpful.

For further information contact:  
S & A Administrative Office  
CAB 305

The Evergreen State College  
206-866-6000 x6220

## "Y Not" to play

by Suzette Williams

Ben Moore's Wednesday Night Jazz Trio Series continues at Ben Moore's Cafe and Bar. Featured this month are the Michael Olson Trio and Y Not.

On April 27, Y Not will play a variety of selections from Jazz to Classical. Led by Nancy Curtis, Y Not also includes Skip Elliot and Donnelle Baldwin.

Shows are from 9 pm to midnight at Ben Moore's, 112 West Fourth, Olympia, 357-7527. There is no cover charge.

# Christians

continued from page 15  
or respond accordingly."

The general agreement among the group was that society as a whole is very antagonistic towards the Bible and Christianity. "America is supposed to be *in God we trust*," said Sean. "But that doesn't happen at all really. Do we really trust in God? It's on our bills, but is it really in our hearts?"

"I just hear excuse after excuse not to pick it (the Bible) up and look at it," said Chris Bader. "Keep it out of the schools, keep it out of the government. Oh, some council re-wrote it, oh, old men wrote it, (or) it's out dated it has nothing to do with me. I mean, I see a lot of excuses and a lot of people afraid to pick it up, because when you pick it up and if you believe it, it's going to change your life."

Strengthening their faith in Christianity had a tremendous effect on the quality of their lives. "There are good reasons why we believe," said Christopher. "It's not just a whim. It's not just something that was handed to us by our parents or our grandparents, although for some of us a real part of it is the family. It took me a life time of searching to see. You know it wasn't like I just went into a dime store and picked up a little pamphlet and said okay I'm a Christian. It was 15 years of real search, real questioning."

"My life is so much better, happier," said Renee, "I have hope, I have joy, I have peace, I have love, I have purpose, I have somebody who loves me all the time, and it does change your life."

"I didn't think I had an emptiness at all, but I found that I did later," said Chris Magnusson, "and it's something in a lot of ways tremendously subtle. The more I think about it and hear about it, the more I realize the subtleties of believing in Jesus; but it's also something very profound and obvious to me too."

The Evergreen Students for Christ welcome anyone who is interested, to come and find out more about them. They hold weekly meetings every Tuesday night at 7:30 in CAB 108.

April 21, 1988

## Governance

### Tier I Budget Presentations

4-15-88

1. African Heritage Conference, UMOJA-\$3900.00
2. Lap top computer for S&A Board-\$2550.00
3. Unemployment fund request-\$13,200.00

### Tier II Budget Presentations

Monday 4-25-88

- 3 pm Rec Sports
- 3:25 E.R.C.
- 3:50 Sister College
- 4:15 S.C.C.
- 4:40 Bike Shop
- 5:05 Slightly West

Wednesday 4-27-88

- 3 pm E.P.I.C.
- 3:25 Women's Center
- 3:50 Students with Challenges
- 4:15 Women of Color
- 4:40 Indian Center

## Bus it

by Dave Cambell

Are you tired of commuting between Tacoma and Olympia? Tired of hitchhiking or paying Greyhound \$4.70 one way for the ride?

Now you have a choice. As of April 11, Pierce Transit is running a bus from Lakewood to downtown Olympia in the morning and early evening on weekdays.

For more information, call Pierce Transit at (800) 562-8104.

# Wildfire

## ACTION GAMES

Play **WILDFIRE** the paint ball COMBAT SPORT

COMPETE with your FRIENDS or CHALLENGE another TEAM

**CALL 491-2072**



100% cotton clothing & marvellous miscellania

203A 4th avenue • 754-0000  
"downtown" across from state theater

April 21, 1988

# Calendar

Friday, April 22

"Global Water and Primary Health Care: Taking Stock." -A lecture by Dr. Peter Bourne, President of the American Association for World Health, President of Global Water Foundation, and former Assistant Secretary-General of the United Nations. Takes place at the University of Washington Health Sciences Building, room D-209 from 9am-10:30am. Free and open to the public.

"Opportunities in International Health" -A panel discussion. Takes place at the University of Washington Health Sciences Building, room D-209 from 11am-12:30pm.

"Developing Your Own Internship" - A workshop Co-sponsored by Career Development and Cooperative Education, will be held in Lib. 1406A from 1-2pm. This workshop is designed for

students interested in developing an internship who have already attended an Internship Orientation Session.

"How To Plan Your Career" -Lib. 1406 from 12-1pm. Sponsored by Career Development.

Monday, April 25

Summer and Fall Quarter Internship Orientation Session. Takes place from 3-4pm in Lib. 1406A. All students planning on conducting an internship should attend to learn about the process, deadlines, and other helpful information. For additional information contact Co-op Ed. ext. 6391.

"What Does Shakespeare Know About the Gender Issue?" -Featuring Inga Wiehl. Shakespeare's balance of masculine and feminine qualities in his

characters and the resulting perception of his world will shed light on our own society and present day gender issues. Takes place at the Student Center at South Puget Sound Community College at noon. No admission fees.

Tuesday, April 26

HOW TO PLAN YOUR CAREER workshop will be held in Lib. 1406 from 12:30am-1:30pm. Sponsored by the Career Development Office.

"Food & Body Image" -4:15-5:45pm. Sponsored by the Counseling & Health Centers.

See page 22



## ASH TREE APARTMENTS

1 & 2 bedroom apartments now available within walking distance of beautiful Puget Sound. Sober yet peaceful for the student of Evergreen State College.

Call 866-8181

3138 Overhulse Rd. N.W.  
Olympia, WA 98502  
Western Heritage

## The Cooper Point Journal has an opening for EDITOR 1988-1989

- Must be undergraduate enrolled at TESC
- Can earn 8-16 credits.

send a completed S & A application form, three writing samples, two recommendations (including references to management skills), your resume, and one faculty recommendation by Mon., May 9, 1988, 12:00 noon to:

Susan Finkel, Advisor  
Cooper Point Journal  
CAB 305  
The Evergreen State College  
Olympia, WA 98505

# Calendar

continued from page 21

**Wednesday, April 27**  
Summer and Fall Quarter Internship Orientation Session. Takes place from 3-4pm in Lib. 1406A. All students planning on conducting an internship should attend to learn about the process, deadlines, and other helpful information. For additional information contact Co-op Ed. ext. 6391.

**"Exploring Anger"** -Lib. 3503, from 2-3pm. Sponsored by the counseling & Health Centers.

**"Assertive Skills"** -Lib. 3503 from 7-8:30pm. Sponsored by the Counseling & Health Centers.

**Parents and parents-to-be:** There is a program on day care selection scheduled for noon. Takes place at South Puget Sound Community College's Student Center. For more information call the college at 754-7711

**Thursday, April 28**  
The University of San Diego will be on campus to recruit students for their Lawyer's Assistant Program. They will be here from 9am-12pm in Lib. 1406. Contact Career Development at ext.6193 for additional information.

The Dream Group will be meeting from 3:15-5pm in Lib. 3503.

**Friday, April 29**  
There will be a resume writing workshop from 12-1pm in Lib. 1406. Sponsored by Career Development.

**"How to Develop an Internship"** -Takes place from 1-2pm at Lib. 1406A. Sponsored by Career Development.

**Monday, May 2**  
**"Talking Made Easier"** -A three part class continued on May 9 and May 16. Participants will practice the skills needed to reduce stress through better communication in relating to their

children, spouses, coworkers, and others. The class will be taught by Rick Kramer, M.A., a wellknown communication training consultant. Classes are from 7-10pm at the St. Peter Hospital's conference room number 203. The cost is \$26. Please preregister by calling St. Peter Hospital Public Relations Department at 456-7247.

**"Fresh Start"** -A four session smoking cessation program, starting Monday, May 2, and continuing May 5, 9, and 12. The class meets from 7-8pm in the 2nd floor executive conference room at St. Peter Hospital. The \$15 per person donation covers registration and materials. For more information and to register, call St. Peter Hospital Public Relations Department at 456-7247.

**"Job Search Strategies"** -Lib. 1406 from 11:30am-12:30pm. Sponsored by Career Development.

The deadline for applications for the Brian Williamson Memorial Scholarship is today. Applicants should demonstrate unusual diversity in interests, demonstrate a commitment to the environment and to humane and effective solutions to environmental problems, and should demonstrate that he or she "acts" rather than merely "thinks" about problems and their solutions. For more information, contact the Dean of Enrollment Services, Lib. 1221 or at ext. 6310.

**Tuesday, May 3**  
**"Maintaining Control: Information for Your Future"** -A free public forum on issues in aging. Takes place at the Tyee Hotel Ballroom in Olympia from 1-4:30pm. To ensure adequate seating, participants are asked to pre-register by calling 456-7247 before April 26.

**"Employment Interviewing"** -Lib. 1406 from 11:30am-12:30pm. Sponsored by Career Development.

Food & Body Image Group for Women meets from 4:15-5:45pm. Call the

Counseling & Health Centers for details at ext. 6800 or 6200.

**Wednesday, May 4**  
The Thurston County Planning Commission will have a hazardous waste hearing at 7:30pm in room 152 at the Thurston County Courthouse Complex.

**"International Careers"** -Location to be announced from 1:30-3:30pm. Sponsored by Career Development.

CLASSIFIED ADS	
HELP WANTED	
<b>MOTHER'S HELPERS</b> Thinking of taking some time off school? We need MOTHER'S HELPERS. Household duties and childcare. Live in <b>EXCITING NEW YORK CITY SUBURBS.</b> ROOM, BOARD, and SALARY included. <b>(203)622-4959</b> or <b>(914)273-1626.</b>	
<b>FEDERAL, STATE AND CIVIL SERVICE JOBS</b> NOW HIRING, YOUR AREA. \$13,550 to \$59,480. IMMEDIATE OPENINGS. CALL 1-(315)733-6063 EXT F2159.	
SERVICES	
<b>TYPING</b> Letters • Term Papers • Resumes Personal • Reasonable Rates <b>491-7196</b>	
WANTED	
<b>International Frame Pack and DOME Tent WANTED!!</b> Contact ("Spirulina") Mike Sutherland <b>A-DORM A616</b> in person/or leave msg. through campus mail.	
FOR RENT	
<b>RENT FOR LESS</b> Private rooms in large home. Share main living, appliances, washer, dryer, large pool close in. All <b>utilities included with rent.</b> \$205.00. Leave <b>message - 786-1649.</b>	

April 21, 1988

# Greenerspeak

How do you feel about having condom machines in the bathrooms on campus?

**Heather Conrad**

*The condom machines? Jesus. I didn't even notice that there were condom machines. Are they in the girl's bathrooms too, or just the boy's bathrooms? Well, I think it's really good that they're in girl's bathrooms as well as boy's bathrooms, so girls have the option of buying them in a place like that if they want to, and I think it's good idea, and you could practice safe sex easier now. A variety of colors and textures would be better than just one kind, I think.*

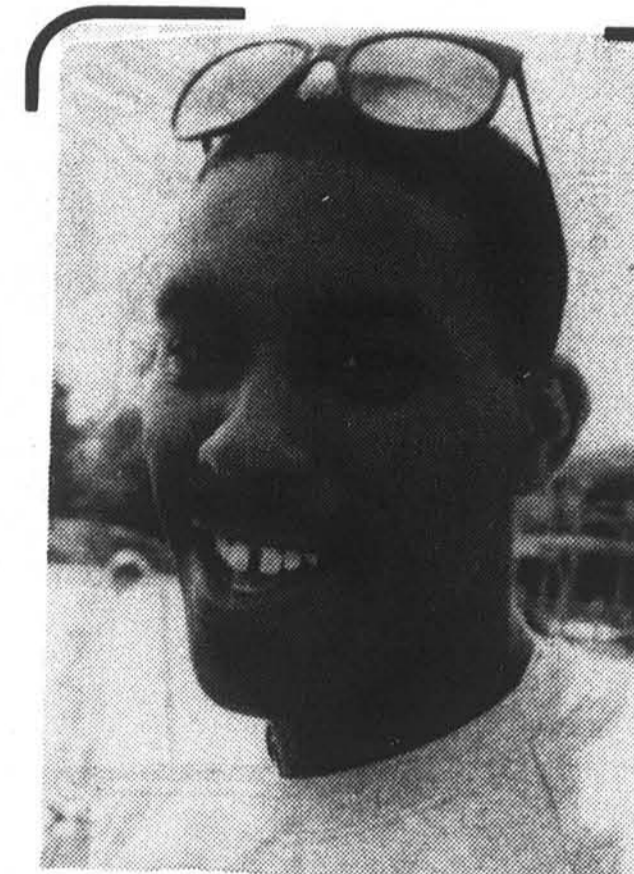
Interviews by Ellen Lambert  
Photos by Larry Cook



**Jackie Barry**

*I think they're great. I've never bought condoms, actually. I don't have much use for them. Fifty cents seems like a reasonable price, they might be a little high, but they're so convenient; you know, if you have a date, you can just go into the bathroom and get one. They seem to be centrally located in the bathrooms in the CAB building, and I was glad to see there*

*was one in the women's bathroom as well as... well, I didn't see the one in the the men's room, but I heard about it from Bud (Johansen), of course. But I was glad to see it. You know, there's so much hub-bub about condom machines in public washrooms and advertising condoms and things like that. I was glad to see Evergreen had them right away.*



**Terrell Boone**

*Well, I haven't really seen the condom machines, but I won't buy one. I don't think we should have to buy a condom to be safe. I don't know. That's just my feeling of it. I think each person should take his own responsibility and do it the way he thinks is right. If he wants to catch AIDS or any other diseases, or if he feels like that's the way he needs to do it... 'Cause, you know, if you just have sex with one person, it's o.k.... It's o.k. to have sex with one person, but if you go off, then you should use a condom.*



**GRE**  
Test Preparation Specialists  
1107 NE 45th, Seattle  
632-0634  
**KAPLAN**  
STANLEY H. KAPLAN EDUCATIONAL CENTER LTD.

**WILDLANDS RESEARCH**  
San Francisco State University  
Extended Education  
**Summer/Fall/Winter '88-'89 3-14 units**  
Join Backpacking Research Teams in North America, Nepal and Hawaii.  
On-site explorations to preserve:  
Wildlife Species  
Wilderness Environments  
Course details:  
**WILDLANDS RESEARCH: (707) 632-5665**  
3 Mosswood Circle, Cazadero, CA 95421

**HIRING NOW**  
Delivery / Drivers  
for West Olympia  
**SUMMER JOBS AVAILABLE**  
• Must be 18 yrs./over  
• Have own car • Be insured  
For more information call  
**754-7800**  
or apply in person  
1621 W. Harrison