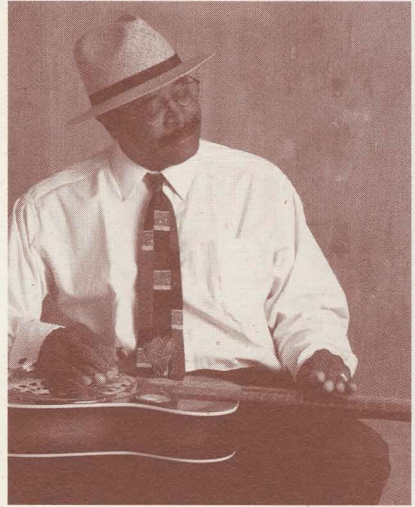


# First Peoples' Catalog

2000-01

**EVERGREEN**

The Evergreen State College  
Olympia, Washington



## Welcome!

As you make important decisions about your future both in terms of education and the directions you dream your life will take, I hope you will seriously consider The Evergreen State College as a step along that pathway. We are committed to and actively work to build a community that embraces diversity, multiculturalism and student development. Our First Peoples' programs reflect the innovative and creative ways in which we approach an education that integrates education with life's experiences in the hope that our students develop a passion for life long learning. I hope that you will find within these pages insight into the type of community we are and understanding of the ways in which you could contribute to and benefit from becoming a member of this community.

I extend my best wishes to you and hope that I will have the opportunity to see you on our campus.

Thomas L. (Les) Purce, President

## ¡Bienvenidos!

Espero que al considerar sus futuras posibilidades en términos de educación para darle a su vida la dirección deseada, nuestra universidad, The Evergreen State College, sea elegida como uno de los pasos hacia la meta anhelada. En nuestra universidad nos hemos comprometido a trabajar activamente para construir una comunidad que celebra la diversidad de culturas y el desarrollo intelectual de los estudiantes. Nosotros contamos con programas especiales (First Peoples') que reflejan los métodos más inovativos y creativos para alquiritr una educación que partiendo de las experiencias vitales despierte en nuestros estudiantes el interés por seguir aprendiendo a lo largo de toda su vida. Espero que encuentren en estas páginas una descripción certera de nuestra comunidad, que les permita anticipar de que manera podran beneficiarse al ser miembros de ella.

Mis mejores deseos para todos Ustedes y espero tener el placer de verlos pronto en nuestra universidad.

Thomas L. (Les) Purce, Presidente



## First PEOPLES'

First Peoples' at Evergreen describes people of racial and ethnic backgrounds commonly referred to in America as "minorities," or more recently as "people of color."

In 1986, Evergreen students, staff and faculty members gathered together and chose the name First Peoples' in recognition of our unique indigenous heritages. We are African Americans, American Indians and Alaskan Natives, Asian Americans, Pacific Islanders and Chicanos/Latinos.

So what's it really like to be a First Peoples' student at Evergreen? There's a lot to learn and experience, and for a while it can seem overwhelming or bewildering. Some new students jump right in and participate in social or political activities sponsored by student organizations. Others wait, watch and test the waters. We believe there is room for all First Peoples' to succeed at Evergreen.

## First PEOPLES'

En el idioma de Evergreen, «First Peoples'» describe a la gente comunmente llamada «minoría» o más recientemente «personas de color» en EU.

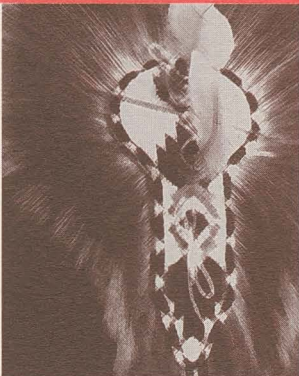
En 1986, los estudiantes, la facultad y el personal universitario adoptaron un nuevo nombre: First Peoples'. Este nombre reconoce el origen indígena de nuestras culturas.

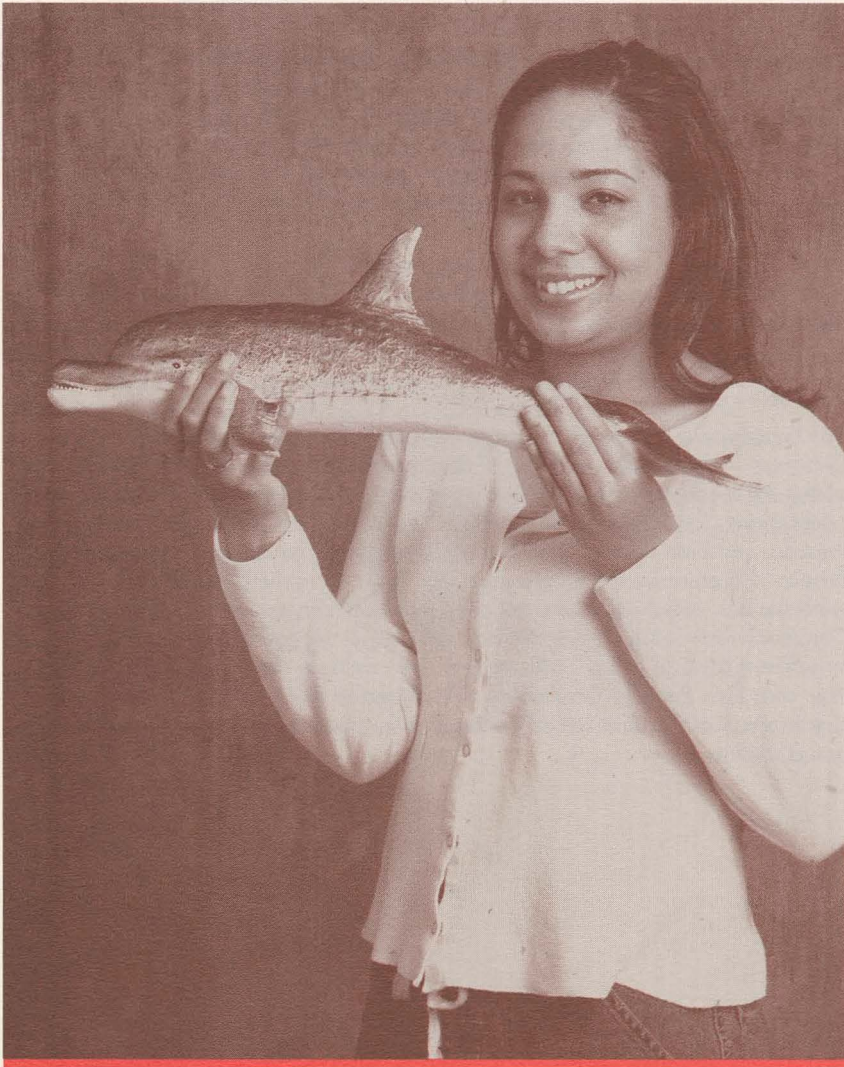
Así pues, ¿cuál es la realidad de ser un estudiante de First Peoples' en Evergreen? Hay mucho que aprender y mucho con que experimentar. Al principio, sin embargo, puede parecer demasiado, ya hasta te puede confundir. Algunos de los nuevos estudiantes se sienten muy integrados y participan en las actividades sociales y políticas patrocinadas por los diferentes grupos estudiantiles. Otros estudiantes prefieren esperar, observar y examinar el ambiente. Pero nosotros creemos que hay algo en todos los estudiantes de First Peoples' que hará que tengan éxito en Evergreen.



Devereux Old Elk  
Shoulderblade Creek, Montana

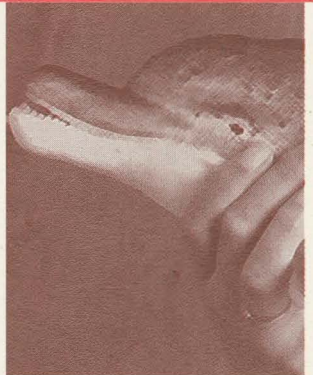
I first came to Evergreen to get my teacher's certification, but after taking one Native American class on treaty rights, I changed my focus. Now, I'm applying to law school.





Rachel Taylor  
Renton, Washington

I decided to become a marine biologist when I was eight. I came to Evergreen straight from high school to follow my dream. I took an upper-division class in invertebrate zoology my freshman year and loved it, especially the hands-on fieldwork.



## First Peoples' Community

Evergreen is located just outside the Olympia city limits in Thurston County. The city's population comprises 10 percent people of color and there are 13 percent in the county. Of the 3,897 students enrolled at the Olympia campus during fall quarter 1999, First Peoples' comprised 14 percent, and in June, 2000, 249 First Peoples' were awarded bachelor degrees. Twenty-one percent of the staff and 22 percent of the faculty are People of Color.

Asian/Pacific Islander	4%	
African American	2%	
Mexican/Latino/Hispanic	4%	
Native American	4%	
Students of color	14%	total

The First Peoples' Community comprises students, staff and faculty of color at Evergreen. Often, at the initiative of the First Peoples' student organizations, we gather for events such as potlucks, community forums, political discussions and celebrations. Traditional annual gatherings include Day of Absence/Day of Presence and First Peoples' Graduation. During the Day of Absence, the First Peoples' Community spends the entire day away from the Olympia campus to welcome new members, renew acquaintances and discuss issues that affect the Community of Color. During the Day of Presence we gather together on campus as a demonstration of our unity. In June, we celebrate the end of the academic year with First Peoples' Graduation. We recognize those who have made significant contributions to the Community and honor the achievements of our graduates.

## First Peoples' Community

Evergreen está localizada en la orilla de la ciudad de Olympia, en el condado de Thurston. La distribución de la raza étnica es 10% para la ciudad y 13% para el condado. 14% de los 3897 estudiantes matriculados en el centro universitario de Olympia en otoño de 1999 fueron estudiantes de First Peoples'. En junio de 2000, 249 estudiantes de First Peoples' recibieron su título universitario. 21% de los empleados universitarios y 22% de la facultad son personas de First Peoples'.

La Comunidad de First Peoples' incluye estudiantes, profesores y miembros del personal universitario de Evergreen. Frecuentemente los grupos estudiantiles patrocinan «potlucks,» reuniones, discusiones política y fiestas. Eventos anuales de tradición incluyen los Días de Ausencia/Presencia y la Graduación de First Peoples'. Una vez al año, nos ausentamos de la universidad para celebrar el «Día de Ausencia,» una oportunidad para conocer a nuevos miembros, reestablecer las previas amistades, y discutir asuntos importantes que afectan nuestra comunidad. Durante el Día de Presencia, nos reunimos en la universidad para celebrar nuestra unidad. Celebramos el fin del año académico con una fiesta especial en honor de los graduados y de personas que han hecho contribuciones importantes a la comunidad.

## Office of Admissions & First Peoples' Recruitment

The Office of Admissions & First Peoples' Recruitment takes great pride in the services provided to prospective students and their family members. We believe that information is power, and want you to be able to make powerful choices. We want our services to be as inclusive as possible without being intrusive.

The Office of Admissions & First Peoples' Recruitment will be sending you monthly *News and Notes* to let you know what's happening in the admissions process, when our representatives will visit your community and what other student services we can offer you at Evergreen.

### We will also:

- Contact you directly. Our staff and faculty will call you to find out if you have any questions about the campus or the curriculum.
- Invite you and other interested students from your school to visit Evergreen for a day. You will be able to meet currently enrolled students, staff and faculty, sit in on a lecture, sample the campus cuisine and take a tour of our facilities.
- Keep you apprised of your admission application review. Is your file complete? What's missing? When will you need to pay your advance tuition deposit?
- Connect you to other student services: Financial Aid, Housing, Academic Advising, Career Development, Learning Resource Center, Student Activities, Recreation and Athletics and First Peoples' Advising Services.

Sometimes currently enrolled Evergreen students continue to use our office as a sounding board or safe haven—a place they know they can come for a serious conversation or a lot of laughter. We appreciate their support and enthusiasm and hope you will soon be among them.

## Admissions Staff

(left to right)  
Christine Licht  
Clarisse Leong  
Qy-Ana Manning  
Brandon Rogers  
Tanya Velasquez  
Sue Bruner  
(not pictured)





## La Oficina de Admissions y First Peoples' Recruitment

La Oficina de Admissions se siente muy orgullosa de los servicios que ofrecen a las personas que quieren matricularse en Evergreen y a sus familiares. Creemos que la información es poder, y queremos darte el poder de hacer buenas decisiones. Queremos ofrecerte una extensa gama de servicios sin causarte intrusiones.

La Oficina de Admissions & First Peoples' Recruitment suplementa los consejos ofrecidos por las de Admissions Office. Enviamos una carta mensual *News and Notes*, que te informa acerca del proceso de la matrícula en Evergreen, de cuándo nuestros represen tantes van a visitar tu comunidad, y de la manera que otras oficinas te pueden ayudar.

### Además:

- te llamamos directamente, apra que tengas la oportunidad de hablar con uno de los profesores, o con un con serjero que pueda responder a tus preguntas acerca de los cursos académicos o la vida social de los estudiantes.
- les invitamos a estudiantes interesados de su escuela a visitar Evergreen por un día. Ustedes podrán conocer a estudiantes, maestros y personal de nuestro colegio. Visitarán a una lectura, probarán la cocina e irán por un paseo de las facilidades.
- te mantendremos informado del progreso de tu matrícula, de los documentos requeridos han que sido recibidos y de cuándo tienes que pagar el costo de la enseñanza.
- te ayudamos a conocer otras oficinas de la universidad: Financial Aid, Housing, Academic Advising, Career Development, Learning Resource Center, Student Activites, Recreation and Athletics, and First Peoples' Advising Service.

Algunos estudiantes de First Peoples' siguen visitando nuestra oficina despues que se han maticulados porque es un ambiente que se presta para discutir con cõnfianza cosas serias igual que divertidas. Nosotros les agradecemos su compañía y entusiasmo y esperamos que tú seas parte de este grupo en el futuro.



Renée McManus  
Los Angeles, California

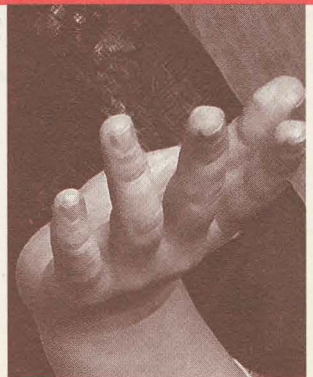
It's nice to be around people who care about issues that transcend their own needs. Likewise, it's comforting to know that there are still institutions left that are interested in producing students who aspire to more than personal gain.





Saoirse McCaig  
Honolulu, Hawaii

The way Evergreen's curriculum is set up enables faculty to truly know their students and work within their strengths, weaknesses and interests. Also, everyone is on a first-name basis, which lessens hierarchical tension.



## First Peoples' Advising Services

First Peoples' Advising Services provides students of color with support that fosters retention. The academic learning is part of every college experience. You will also learn more about yourself in a historical, cultural and social context. Our support throughout this developmental process is both challenging and sustaining. We promote the importance of the individual in the community and provide the necessary skills for well-being and academic growth in a pluralistic society. We also support a continuing dialog for the entire campus community. We challenge and encourage the development of diversity throughout the institution that will create and maintain a hospitable environment for our success.

Our services are comprehensive—including academic planning/advising, social activities, graduate school advising, career development and personal counseling. There isn't a question too small ("What are the academic programs like?") nor any goal too great ("I want to go to medical school, can you help me?") that we can't answer.

### We also offer:

- **Fall Orientation Programs** for new students. The First Peoples' Scholars Program is a four-day pre-orientation activity designed for new students to enhance transition to Evergreen. Workshops are also offered during Orientation Week for all new students.
- **Leadership Development** for student employees through our Peer Support program. Peer counselors/advisors are paraprofessional staff members. They receive yearlong training through a class offered in collaboration with Housing and the Counseling Center. The training includes developmental models on student development, counseling techniques, communication techniques, records maintenance and more.
- **Events Planning** with the student organizations. The Peer Counselors co-sponsor events as a means to develop connections with students. A sample of these activities include: annual reading from the Students of Color Anthology, dances and guest speakers and performers.
- **Community Building** and keeping connections vibrant. Through our quarterly potlucks held for students, staff and faculty members we can sustain our campus-wide relationships. We've also sponsored a variety of forums on cross-cultural communication and the value of affirmative action. We also plan and organize Day of Absence/Day of Presence, which is an annual winter quarter event.
- **Advocacy** and assistance can take many forms. Sometimes it is knowing the appropriate referral, which other times, you may just need someone to talk to so that you can organize your thoughts and be able to resolve a situation. Our staff members also offer mediation services, facilitate group discussions on diversity and accompany students to disciplinary hearings.

## First Peoples' Advising Services

First Peoples' Advising Services les presta apoyo a los estudiantes para que tengan éxito en sus estudios. El aprendizaje académico es parte de cualquier experiencia universitaria. Además, aprenderás más sobre tí mismo en un contexto histórico, cultural y social. Consideramos que en este proceso de desarrollo personal podemos prestarte sostén y estímulo. Damos importancia al individuo en la comunidad y a las habilidades que necesitas para tu bienestar y desarrollo académico en una sociedad tan diversa. También promovemos un diálogo continuo para toda la comunidad universitaria. Motivamos el desarrollo de la diversidad en toda la institución para crear un ambiente acogedor a nuestro éxito.

Prestamos servicios extensos—inclusivo consejos personales y académicos que te ayudarán a hacer decisiones sobre tus estudios en Evergreen, en tus estudios posgraduados, y en la carrera a que aspire. Para nosotros, no hay tal cosa como pregunta insignificante (¿Cómo son los programas académicos?) o aspiración ambiciosa (Quiero estudiar medicina. ¿Puedes ayudarme?) a que no podemos responder.

### También ofrecemos:

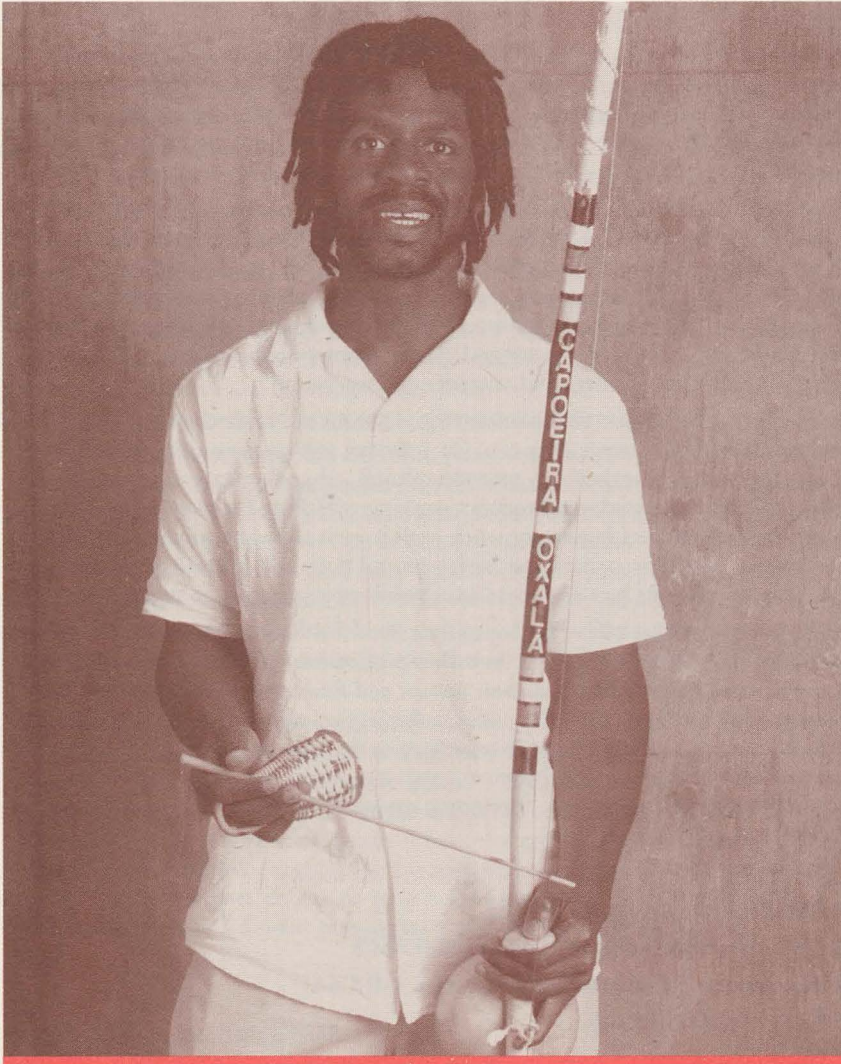
- **Orientación** en el otoño para estudiantes nuevos. El Undergraduate Scholars un programa diseñado a facilitar una transición agradable a Evergreen. Ofrecemos talleres también durante de orientación para todos los estudiantes nuevos.
- **Desarrollo de liderato** para empleados estudiantiles en nuestro Peer Support program. Los consejeros estudiantiles son parte del personal profesional y reciben entrenamiento por un año en una clase colaborativa ofrecida por el Counseling Center y la oficina de Housing. El entrenamiento incluye temas de desarrollo estudiantil, técnicas de aconsejar y comunicar, mantenimiento de archivos, y más.
- **Planificación de eventos** con organizaciones estudiantiles. Para establecer enlaces con los estudiantes, los consejeros estudiantiles participan en ciertos eventos como co-patrocinadores. Ejemplos son las lecturas anuales de la antología que publican los estudiantes de color, bailes, conferencias y estrenos culturales.
- **Desarrollo de comunidad** y sostenamiento de un compañerismo entre estudiantes, profesores y miembros del personal de Evergreen. Esto lo logramos con «potlucks» por lo menos tres veces al año. También hemos presentado varias oportunidades sobre la comunicación intercultural y el valor de Acción Afirmativa. Además, organizamos los Días de Ausencia/Presencia cada invierno.
- **Asistencia profesional y apoyo.** Este servicio puede tomar varias formas. A veces solamente necesitas saber con quién debes consultar sobre un problema. Otras veces tal vez solamente necesitas hablar con alguien para orientarte y tú mismo resolver algo. Nuestro personal ofrece servicios de mediación, puede facilitar discusiones en grupos sobre la cuestión de la diversidad, y puede acompañar estudiantes a procesos disciplinarios.



Greg Smith  
Puyallup, Washington

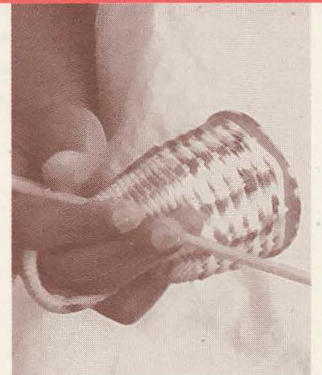
As an incoming student of color, I recommend joining up with some of the student of color groups to make connections, create a web of friends and resources, and make things happen! I enjoyed Evergreen so much, I'm planning to apply for the Masters in Teaching program in 2001.





Michael Gary  
Seattle, Washington

People come to Evergreen with their cultural biases, which frequently cause tension. Don't be afraid of this tension. Exercise patience and work through your differences; you will grow through the experience.



## Student Organizations at Evergreen

Evergreen's student organizations are valuable sources of cultural enrichment, personal growth, lasting friendships and solidarity. Involvement can help you learn to work more effectively within groups and with other organizations while also helping you develop leadership skills. Student fees fund more than 50 active student groups, offering a wide variety of opportunities for your participation.

Organizations like Asian Students In Alliance (ASIA), Movimiento Estudiantil Chicanos Aztlan (MEChA), Native Student Alliance, Umoja and the Women of Color Coalition are coordinated by students of color for students of color. These organizations, active throughout the academic year, produce cross-cultural events; bring speakers, films and entertainment to the community; sponsor conferences and celebrations; and play an integral role in promoting the college's goals of enhancing cultural diversity and student empowerment.

At Evergreen, you'll find that student organizations are more than just clubs or social alliances. Of course, they provide activities and opportunities for fun and social interaction, but they also provide cultural, educational, recreational and spiritual services to students. Students working with First Peoples' student organizations conduct important work against racism and harassment and help the entire community understand, welcome and honor diversity. Involvement can give you one of your best and most worthwhile experiences as a student.

Student organization offices are located on the third floor of the College Activities Building, along with the Student Activities professional staff, who will help you get connected with all of the student groups and find out what's happening on campus. The staff members also assist in the interpretation of campus policies and procedures and local, state and federal laws as they pertain to campus issues (permits for vendors, political campaigning, use of state funds for student activities, etc.) and assist with developing student-initiated programs and activities.

### First Peoples' student organizations include:

- Asian Student In Alliance (ASIA)
- Latin American Student Organization (LASO)
- Movimiento Estudiantil Chicanos Aztlan (MEChA)
- Native Student Alliance
- Umoja (Swahili for "unity"), African American Student Organization
- Women of Color Coalition

For a complete list of Evergreen student organizations, contact the Student Activities Office, College Activities Building, third floor, ext. 6220.



## Organizaciones Estudiantiles

Las organizaciones estudiantiles de Evergreen son fuente de enriquecimiento cultural, desarrollo personal, grandes amistades y solidaridad. Tu participación te puede ayudar a trabajar más efectivamente dentro de grupos y con otras organizaciones, mientras que puedas desarrollar tus calidades de líder. Parte del dinero de la matrícula es destinado para el mantenimiento de más de 50 grupos estudiantiles, los cuales ofrecen programas muy variados para tu participación

Organizaciones como Asian Students in Alliance (ASIA), MEChA, Native Student Alliance, Umoja, Women of Color Coalition son coordinadas por estudiantes de First People para los estudiantes de First Peoples'. Estas organizaciones ofrecen varios eventos culturales durante el año como conferencias, películas, celebraciones y fiestas para la comunidad. Como ves, estas organizaciones tienen un fin muy importante: el de aumentar la diversidad cultural de la comunidad.

En Evergreen, descubrirás que las organizaciones estudiantiles son más que clubs o alianzas sociales. Desde luego, patrocinan actividades sociales y oportunidades para divertirse, pero también patrocinan actividades culturales, educativas, y espirituales para los estudiantes. Con la ayuda de First Peoples' Advising Service y con los miembros de la comunidad, estas organizaciones ayudan a combatir el racismo y el acoso contra miembros de minorías. También contribuyen al entendimiento, respeto y acogida de la diversidad cultural. Tu participación en estas organizaciones te puede proporcionar una de las mejores experiencias como estudiante universitario.

Las oficinas de las organizaciones estudiantiles están localizadas en el tercer piso del College Activities Building, junto a la de los miembros de la Oficina de Student Activities. Esta oficina te puede ayudar a integrarte a otras organizaciones, darte información acerca de futuras actividades, e interpretar las reglas universitarias y las leyes estatales o federales que se refieren a asuntos estudiantiles (por ejemplo: licencias para vendedores en la universidad, campañas políticas, gastos de bienes del estado para actos estudiantiles, etc.). También te pueden prestar ayuda a diseñar programas y actividades diversas.

### Esta es una lista de las organizaciones estudiantiles de First Peoples':

- Asian Students in Alliance (ASIA)
- Latin American Student Organization (LASO)
- Movimiento Estudiantil Chicanos de Aztlan (MEChA)
- Native Student Alliance
- Umoja (en la lengua de Swahili quiere decir unidad), African American Student Organization
- Women of Color Coalition

Si deseas una lista de todas las organizaciones estudiantiles, por favor llama «Student Activities Office,» ext. 6220.

## Contact Numbers

### Office of Admissions & First Peoples' Recruitment

Phone (360) 867-6495

Clarisse Leong, Admissions Counselor  
leongc@evergreen.edu

Sue Bruner, Office Assistant  
bruners@evergreen.edu

### First Peoples' Advising Services

Phone (360) 867-6467

Holly Colbert, Director  
colberth@evergreen.edu

Raquel Salinas, Peer Support Coordinator  
salinasr@evergreen.edu

### Evergreen Web Page:

<http://www.evergreen.edu>

### Mailing address:

The Evergreen State College  
2700 Evergreen Parkway NW  
Olympia, WA 98505

## Affirmative Action Policy

The Equal Opportunity Policy of The Evergreen State College expressly prohibits discrimination against any person on the basis of race, sex, age, religion, national origin, marital status, sexual preference, Vietnam-era or disabled veteran status, or the presence of any sensory, physical or mental disability, unless based upon a bona fide occupational qualification.

## Accessibility of Information

The information contained in this catalog is available in other media with 24 hours notice. TDD: (360) 866-6834.

## Disclaimer

Academic calendars are subject to change without notice. The Evergreen State College reserves the right to revise or change rules, charges, fees, schedules, courses, programs, degree requirements and any other regulations affecting students whenever considered necessary or desirable. The college reserves the right to cancel any offering because of insufficient enrollment or funding, and to phase out any program. Registration by students signifies their agreement to comply with all current and future regulations of the college whenever approved. Changes become effective when Evergreen so determines and apply to prospective students as well as those currently enrolled.

©2000 by The Evergreen State College

## Production Team

Editing: Clarisse Leong, Magda Costantino,  
Evelia Romano, Susan Levine, Diane Kahaumia

Design: Judy Nuñez-Piñedo, Marc Livingstone

Photography: Martin Kane

---