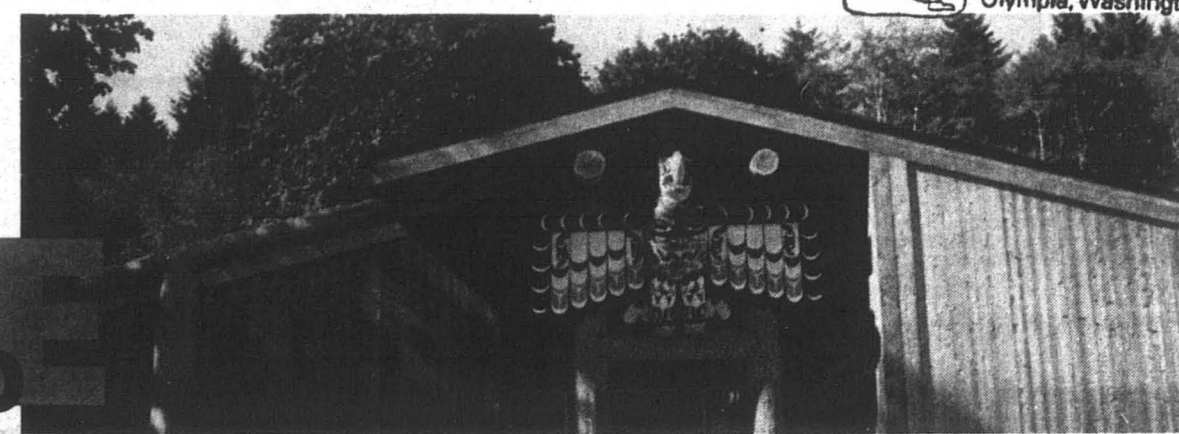


# LONG OPENING HOUSE



## • COOPER POINT JOURNAL •

September 28, 1995

The Evergreen State College

Volume 26, Issue 2

Parents! Keep current with your child's education by subscribing to the

# Cooper Point Journal

Let us be your source of information about the Evergreen community!

Phone calls from afar don't give the whole picture. Keep in touch with what *really* goes on here during the school year.

The Evergreen State College's official student-operated/produced/funded newspaper can provide you with 28 issues of news, commentary, critiques, photos and student comics for a modest fee that covers the cost of postage.

By receiving the CPJ at home, you can easily keep in touch with issues such as tuition hikes, problems in housing, local crime, outstanding academic achievements and more.

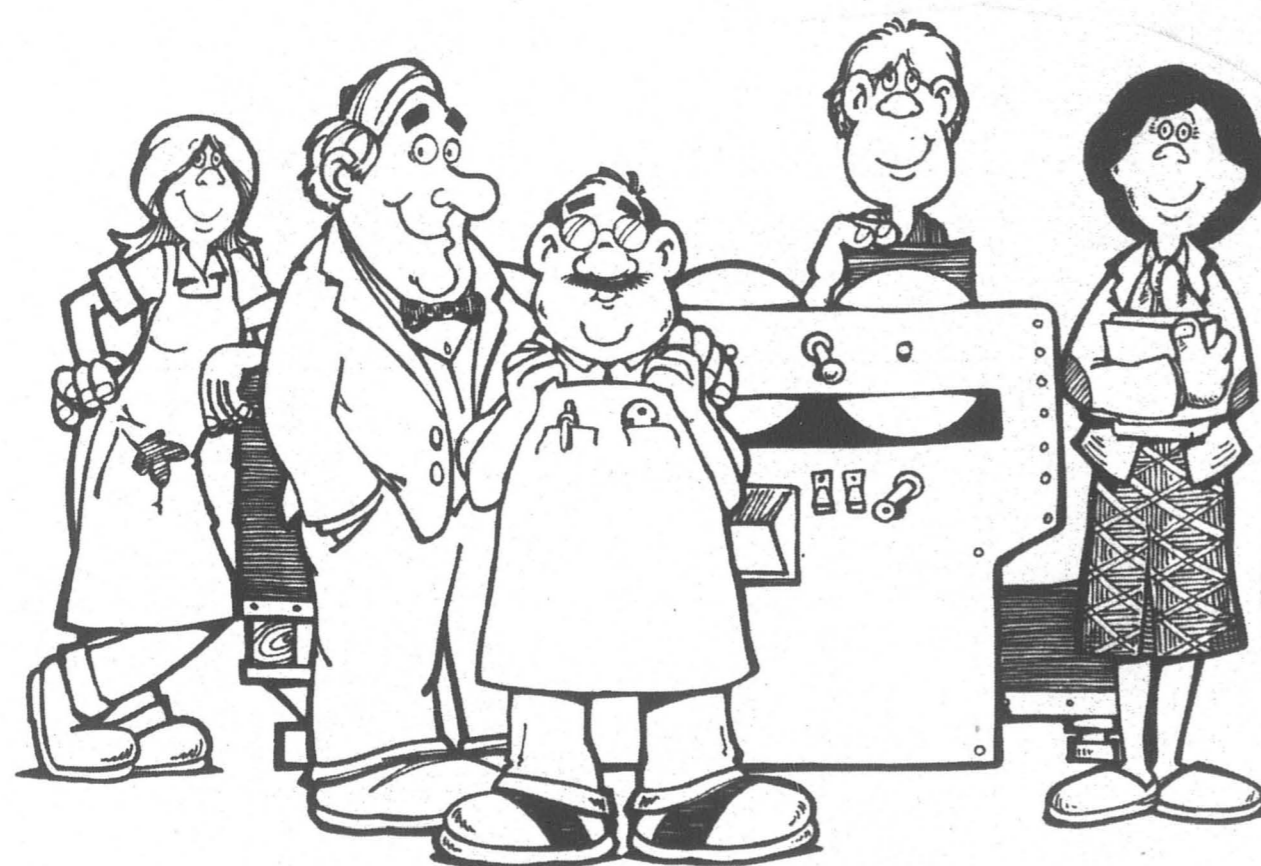


Fig. 1 - Part of the CPJ Family. From Left to Right: Jenny (ad rep), Graham (business manager), Reynor (editor in chief), Jimi (interim layout), Dawn (managing editor).

The CPJ is published on Thursdays during the Fall, Winter and Spring quarters. Order now to begin receiving the Cooper Point Journal immediately.

**Yes! I want to know what goes on over there!**  
Please subscribe me for one full calendar year.

- Check a Circle
- \$23 Third Class subscription (may take as long as 4 weeks to receive)
  - \$35 First Class subscription

Name \_\_\_\_\_ Phone # \_\_\_\_\_  
Street Address \_\_\_\_\_  
State \_\_\_\_\_ Zip \_\_\_\_\_

Please enclose a check or money order made payable to the Evergreen State College and mail to:  
Cooper Point Journal  
The Evergreen State College  
Olympia, WA 98505

Cut on Dotted Line and Return to Us

### Evergreen will have basketball and tennis

By Jimi Cuningham

After 20 years of Affiliation with the National Association of Intercollegiate Athletics (NAIA), Evergreen announced in June that it would be changing its current affiliation to the National College Athletics Association (NCAA), Division III.

As a result, the 1996-97 season Evergreen will attach men's and women's basketball and tennis to the already existing swimming and soccer programs.

The administration made a decision last spring concerning its current NAIA affiliation. The decision came after several Pacific Northwest Athletic Conference (PNWAC) schools changed their association to the NCAA. Not changing affiliation would have caused problems for the swimming program. To compete in swimming, Evergreen must change its national affiliation. This also means a change in its regional affiliation. If the change did not occur, the team would have had no conference to compete in after this school year.

Public forums for input were held last May. Sentiments varied.

"I wish there was this much concern for academics," commented student Jessica Reed.

But other students then felt differently. "It [participation in athletics] has been a big part of my life," said Kristie Copp.

Art Costantino, Evergreen's vice president for Student Affairs felt there were options. He felt options were sticking with the NAIA, joining NCAA Divisions II or III or dual membership with the NCAA and NAIA. After an investigation, Costantino found and disclosed in a memo addressed to the Evergreen community that "The one that made the most sense for the way Evergreen approaches athletics and academics was NCAA Division III. Like Evergreen, they see value in athletics, but they look to athletics as an addition to the academic program that is accessible to a range of interested students, instead of just the most elite athletes."

Please see **SPORTS** pg. 5

### Security undergoing changes



The sleek white security cars are all some Evergreen students get to see of Campus Security. But the type of officer that rides inside them may change due to a request from Security to become an official armed police force.

by Oscar Johnson

TESC's Public Safety department has been undergoing a series of changes that will have a growing impact on campus life.

The most obvious change is the current search for a new Director of Public Safety and the new supervisory position of the former director, Gary Russell.

Russell is now filling the new position that will oversee investigations, crime

prevention training and act as liaison for the department. Thurston County Undersheriff Neil McClanahan has been serving as Interim Director of Public Safety since last July and will continue to do so until a new Director is hired.

Candidates for Public Safety Director have been narrowed from about thirty applicants down to two. William O'Connell and William Correll were originally scheduled for a public interview Sept. 15 and 18.

The dates were rescheduled, however, after, "we realized many students would not be on campus," said Vice President of Student Affairs, Art Costantino. Due to this oversight, and perhaps the questions raised by disgruntled students and faculty, the interview dates were changed to Sept. 25 and 27. Costantino points out, however, that "we have not had much participation from students when interviewing for candidates [in the past]," adding that no students showed up when he was interviewed for his position. Costantino said that the interviews were rescheduled, however, to insure that students would at least have, "the choice," of participating.

A decision is pending as to whether one of the two candidates will be hired as Director or whether others will be brought in.

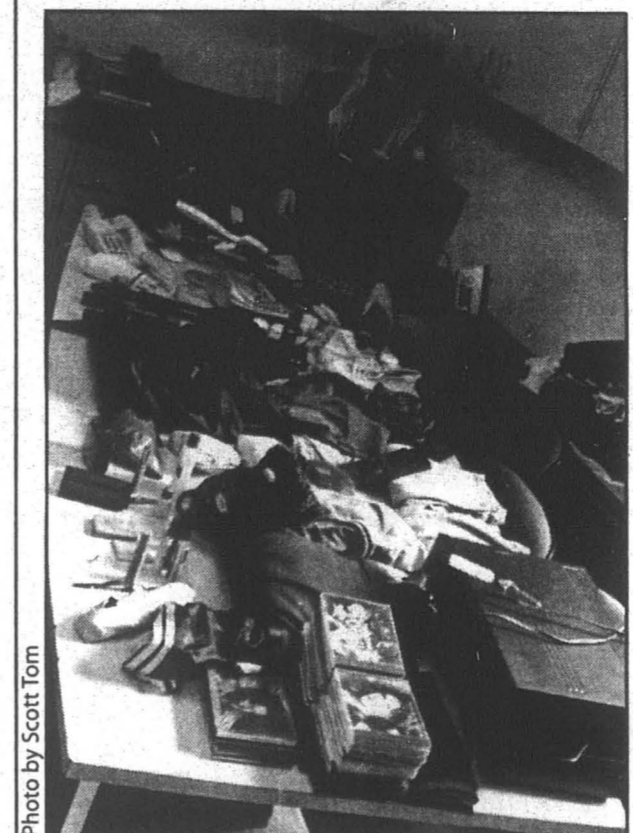
Tantamount to these administrative shuffles, however, is what Executive Vice President T.L. Purce describes in a recent communique as the Public Safety Department's, "...transition to a fully commissioned police force."

Despite a relatively steady level of crime over the last three years, the Thurston County Sheriff's Office, has been pressuring TESC to become fully responsible for its own security. Thurston county says this is due to a sharp increase in population and projected crime statistics.

Since in the past Public Safety has not had professional police training or been an armed security force it was their policy to wait, as long as 20 to 30 minutes, for police backup in potentially dangerous situations. In 1992

Please see **CHANGES** pg. 4

### Seized loot



Campus Officer Tammi Stretch displays seized evidence allegedly stolen from Evergreen and homes around Olympia by a group of high school-aged girls. Please see page 6 for the full story.

### Officer assaulted in F-lot

by Oscar Johnson

Last Wednesday, Sept. 20 at 2:22 am Public Safety Officer Kirk Talmadge was assaulted while responding to a call concerning vandalism and potential car burglary in F lot.

According to Thurston County Undersheriff and Interim Director of Public Safety, Neil McClanahan, Officer Talmadge was responding to a call that Public Safety had received regarding, "three males who were doing damage to a vehicle in F lot."

After arriving at the scene it was discovered that only one person, who had been drinking heavily, was suspect.

According to McClanahan, "Officer Talmadge responded by trying to talk and reason with the suspect and was assaulted." The suspect then fled the scene.

Talmadge was, "hit three times," causing him to lose his glasses and be knocked to the ground sustaining "some damage to his elbow [and] a cut above his nose," said McClanahan.

Officer Talmadge was treated and released the same day from the hospital and is reported to be in good condition.

The following day Thurston County Police arrested a 20 year-old suspect at his home. The suspect is not a student at TESC.

TESC Olympia, WA 98505 Address correction requested	Bulk-Rate U.S. Postage Paid Olympia, WA 98505 Permit No. 65
--	--

**EVERGREEN**

## Computer classes offered

Academic Computing will be offering several workshops this fall for students, faculty and staff. These classes offer an introduction to the Internet, Windows and Desktop Publishing. To find out more information or to sign up for any of these classes, contact the computer center at x6231.

## Media Loan changes policy

In an effort to improve its service, Media Loan has introduced several new and important changes in its overdue, damaged and missing equipment charge guidelines for the 1995-96 academic year. The charge for overdue equipment is now \$3 a day for the first seven days and \$5 a day for each day after that. Damaged equipment fines will now include the price of parts, labor and a service charge. For non-returned items, Media Loan will charge the price of the item plus a service charge. These guidelines were made to insure quality equipment in good working condition to support academic and official college business. Ideas and input from the campus community are always welcomed. To give your input, or for more information on the new equipment guidelines, contact Media Loan at x6253.

## Change comes to the Greenery

Northwest Food Services has announced that the Greenery has changed its set up this academic year. This year the Greenery is offering a "one price fits all" plan for each meal. For one price at the door, students can use their Geobuck Card or pay with cash, and choose from a variety of entrees, salad bar, desserts and drinks. Each meal is a different price, but you can "eat and eat and eat" as much as you want. Breakfast is \$3.25, lunch is \$5.25 and dinner is \$6.75 with tax included for all meals.

**SECURITY BLOTTER**  
Compiled by Matthew Kweskin

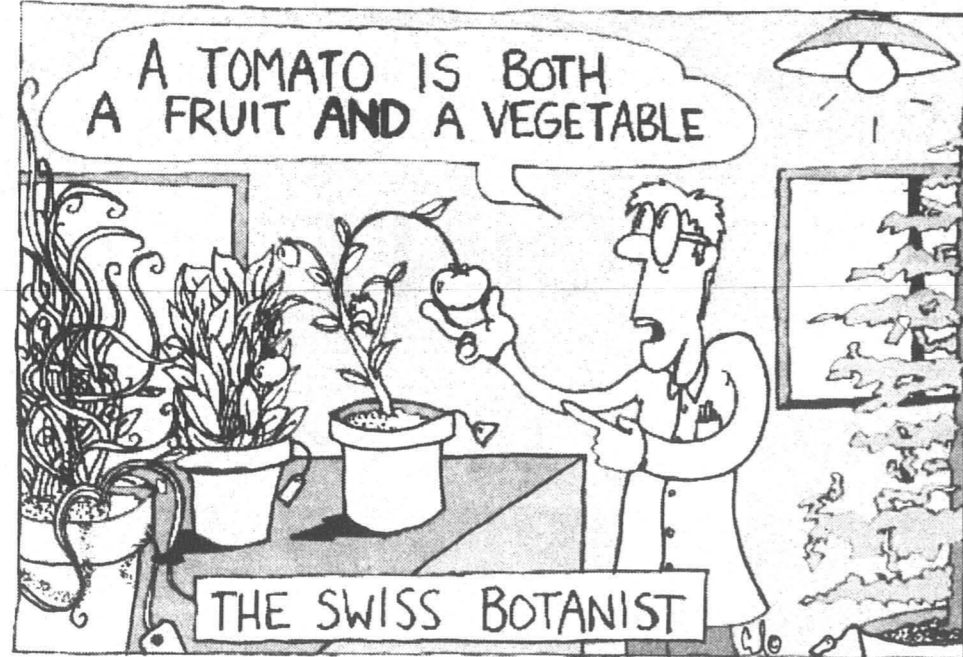
**Thursday, September 14**  
1445: Fuel leaking from a car in F-Lot.  
2106: Theft from a vehicle parked in F-Lot.

**Friday, September 15**  
A quietly relative day.

**Saturday, September 16**  
2335: People seen trying to get into the Longhouse.

**Sunday, September 17**  
1545: Vehicle stuck on a hill at Firewood and Overhulse  
1618: A housing employee told a student to stop climbing on the second floor of I-Dorm. The student responded with abusive language.  
1837: Fire alarm in B-Dorm caused by burnt food.

Sal Jokes by Sal Occhino



## Wish Pat Schock good luck

The Evergreen community is invited to join in a fond farewell to Pat Schock. Schock has worked at Evergreen for the past 8 1/2 years in the Admissions office and in Academic Planning. Schock is now leaving Washington for Vermont to pursue her artistic talents. If you want to wish her well, go to CAB 315 on Thursday, September 28 from 3 to 4:30 pm for a farewell tea with refreshments.

**OLYMPIA**

## Self-defense classes offered

A six week women's self-defense series taught by FIST (Feminists in Self-Defense Training) will begin on Monday, October 9, from 6 to 8:30 pm at the Olympia Center, room 202. A full range of self-defense options will be covered including: self-esteem and confidence building, strategizing, assertiveness, information sharing and physical skills.

**Monday, September 18**  
0617: A campus police officer fell while "biking her beat".  
2204: Fire alarm in the Mods.  
2249: Public safety confiscated a pellet/BB gun that was believed to be a firearm from an unlocked car in F-Lot. They were investigating the car because smoke was coming from the engine. It smelled like burning electrical tape.

**Tuesday, September 19**  
0511: Smell of tar in the first floor of the library.

**Wednesday, September 20**  
0222: A campus police officer was assaulted in F-Lot by two non-students who had just broken a car window. After the assault, the officer blocked the entrance to F-Lot, allowing the suspects' car to be traced. A felony arrest was made.  
2326: Subject in Housing threatening to kill self.

## If You Can Make Comics Even Better Than The Preceding Sal Joke...

...The CPJ Has A Place To Display Them!  
Funny  
Serious  
Dramatic  
Whatever:  
We want your original comics!  
Come by the CPJ for guidelines  
The next "They'll do it every time" could come from you!

**ELSEWHERE**

## Become a team player

USA Today has begun the search for the 1996 All-USA Academic Team. Twenty college students will be hand-picked from across the nation to be on this prestigious team. Aside from having their picture appear in USA Today, students selected to be on the team will be invited to receive their awards at a ceremony in Washington, D.C. in early February and will be given a \$2,500 cash award. For more information, contact Carol Skalski at (703) 276-5890.

The sliding scale fee is available from \$15 to \$30, and free childcare is available with a weeks advanced notice. FIST is a women's volunteer organization that has been teaching self-defense in the Olympia area since 1979 and can be reached at 438-0288.

## Gallery happenings

Childhood's End Gallery is going to host several events for Arts Walk this week. On Friday, September 29, the gallery will host an artists' reception from 5 to 10 pm. Also showing for Arts Walk are: Kathy Hughes, works on handmade paper and Tucker Peteril, mixed media and tile mosaic. Childhood's End Gallery is located on Olympia's waterfront at 222 West Fourth Avenue and is open Monday thru Saturday from 10 am to 6 pm and Sunday from noon to 5 pm. Become a team player

**HEY THERE!**  
In case you've been wondering what's up with our paper, the wanted to have some fun and decided to experiment. We're trying a few things with the flag (that thing that says CPJ on the front cover) and the comics (spreading them throughout the paper). We wanted to see what the paper would look like a little different, so we're trying a few ideas out to see what they look like and to get reactions from you, since this is your paper. We really want to hear what you think of our ideas, so either drop by the CPJ office in CAB 316 (that's on the third floor of the CAB, through the Student Activities area) or call us at x6213.

**Browsers' Books**  
107 North Capital Way  
in downtown Olympia  
**20% off any purchase when presenting coupon**  
Not applicable to: special orders and books on hold  
Coupon Expires 12-25-94

**HARBINGER INN** Bed & Breakfast  
Charming 1910 Mansion  
Overlooking the Puget Sound & the Olympic Mountains.  
1136 East Bay Dr, Olympia, WA 98506 • 754-0389

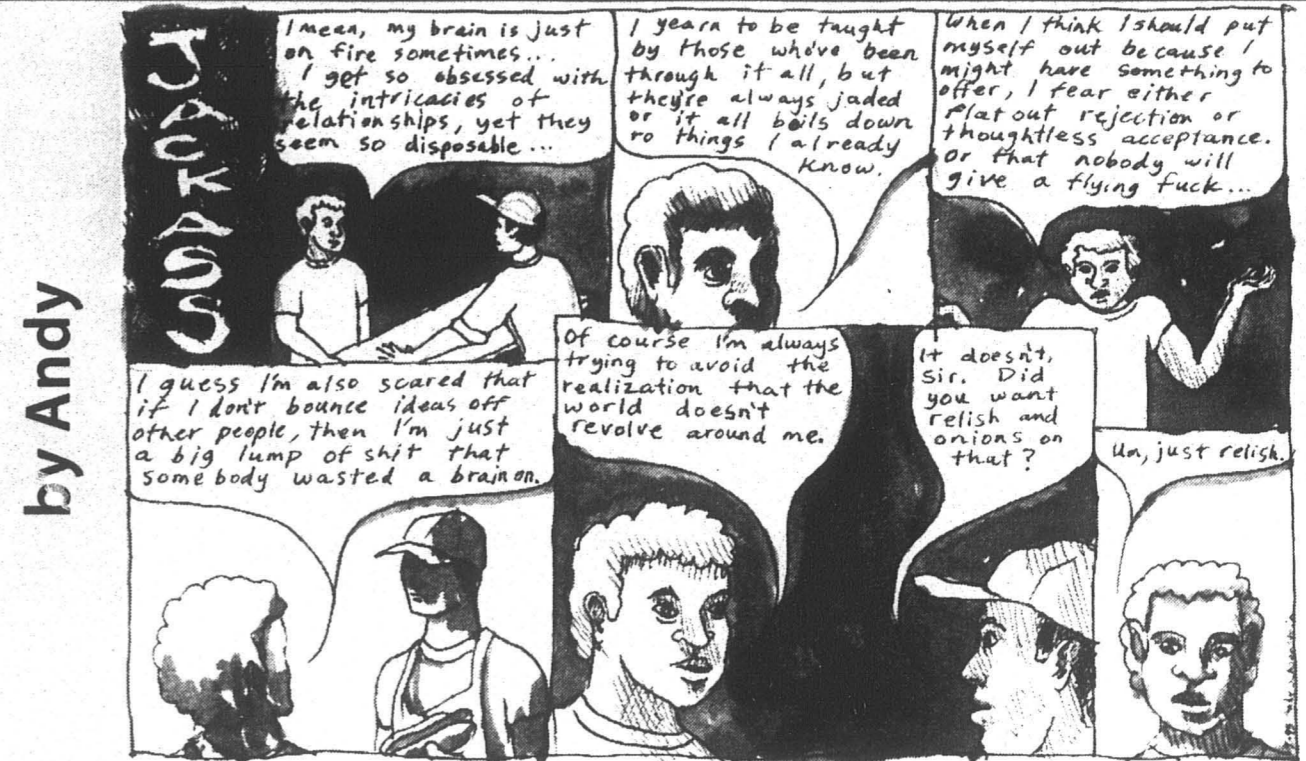
Call x6532  
Where Coffee Roasting is an Art  
Fresh Roasted Daily  
786-6717  
513 CAPITOL WAY  
OLYMPIA, WASHINGTON

## Evergreen: Another Fly Caught in the Web

By Cedrus Fox-Dobbs

Last year a group of six Evergreen students started the hard work of creating a prototype for a web site on campus. After many months of work Evergreen is finally on-line this fall. A web site offers students and faculty an opportunity to explore the expanding world of the internet by supplying numerous informational home pages for the on-line world to browse. Not only does Evergreen have it's own pages but the new web site gives students the chance to 'surf the net' in a user friendly environment.

Leopoldo Marino, Computer Assitant, mentioned that departments are hard at work creating their own home pages, which will offer students additional information and assistance in their programs. Individual home pages are not yet offered but should be by mid-October. Classes and informational books on creating your own page will accompany the



by Andy

Schoenstein

transition. Home pages are created in a programming language called HTML. HTML programming books can be found at many of the community's book stores.

Although an advancement into the on-line world will no doubt create a hype and a rush of users, students need to remember that the web site is still under heavy construction and students may encounter many bugs and errors. But problems aside, the highway is now wide open for all students!

## College adds new Macintosh lab

By Cedrus Fox-Dobbs

Over the summer Evergreen added a new computer lab consisting of twenty 8500 Macintosh Power PC's. These machines run at 120 mhz powered by a PPC 604 chip. Which in non-computer jargon means they run extremely fast and efficient. This addition of a new lab will hopefully provide easier access to high powered computers and help generate interest in more advanced work.

All the Power PC's have the basic Microsoft Word, Excel and Power Point but in addition most of them contain video cards which can capture images straight from a VCR, manipulate the images and then send them back onto a video tape. This technology is fairly new but combined with the quad-speed CD-ROM drives will provide a great presentation medium for student projects. The world of on-line computing is easily accessed through Netscape and networking throughout Evergreen's labs. Finally two scanners and a Midi station rounds out this impressive lab.

Computer Assitant Leopoldo Marino

described these machines as "top of the line" and Andre Helmstetter, Computer Consultant reflects, "... that this is the first time Evergreen has been out on the cutting edge of technology." Leo stressed that these machines are available to all students, faculty and staff. Look for future dates and locations of informational sessions open for students. This addition keeps Evergreen in the flow of technology and should be well used throughout the school year.

**See Your Name In The Paper!**  
Story Meetings are Mondays at 5:00 pm  
Third Floor of the CAB  
Room 316

**LEVITY CAFE**  
430 Legion Way  
Olympia 357-7446  
Most tasty wood fired PIZZAS in town  
Many Specials  
JUICE BAR  
Relaxed Dining

**RUGBY RUGBY RUGBY RUGBY**  
WOMEN'S AND MEN'S  
Call x 6533

**BULLDOG NEWS**  
OLYMPIA, WA  
MAGAZINES FOREIGN AND NATIONAL PRESS ESPRESSO CAFE  
116 East 4th • 357-NEWS  
postcards • t-shirts • cards

**Batdorf & Bronson ROASTERS**  
Where Coffee Roasting is an Art  
Fresh Roasted Daily  
786-6717  
513 CAPITOL WAY  
OLYMPIA, WASHINGTON

**BODY PIERCING & JEWELRY AT SHOKA!**  
NEW NEEDLES PRIVATE. STERILIZED HIGH QUALITY SURGICAL STAINLESS STEEL & NIOBIUM JEWELRY.  
309 Fourth Avenue  
Olympia  
Shoka & Co.  
Call on Saturday  
786-6027

Comedy Foreign  
**Your One Stop Video Store**  
**VIDEO I**  
"Non main-stream films"  
Cult Classics Horror  
Audio Books 754-8119 Laser Discs  
1946 East 4th Avenue  
Wash. Drivers Lic. Required 11-10 Daily

"WE ARE WHAT WE DREAM"  
**JINJOR**  
Natural Fiber Clothing Since 1988  
"Naturally" At Jinjor • 201 E. 4th Ave. Downtown Olympia  
(206) 754-0808 Open Sundays Too!  
\*Bring this ad for 10% off your next purchase\*

# Security may soon carry guns

Con't from CHANGES page 1

The TESC Board of Trustees decided that in response to the Sheriff's Office concerns it would begin working towards becoming a fully commissioned, local police force on campus.

"In order to enforce these laws you need to become a law enforcement agency," said Campus Police Sergeant Larry Savage. According to Sgt. Savage, Public Safety is upgrading itself to the "same [standards] as The University of Washington, Eastern Washington, Western Washington and all four year college campuses in Washington."

According to Russell all Public Safety Officers have now completed certified, police academy training. This training, which was provided free of charge by the Thurston County Sheriff's Department, has been the central theme of the transition.

What will undoubtedly become the controversial theme of the transition, however, is whether or not the Evergreen community wants their police force to carry guns. When this issue was brought before the Board of Trustees in 1990 it was, "resolved to not arm officers and rely on Thurston County [police backup]," said Russell.

Increased "unsafe working conditions" complaints filed by TESC's Public Safety Department to Washington state's Department of Labor and Industries, however, point to the fact that there is more at hand than philosophical differences. Sergeant Savage

insist that, "the same kind of crime is at Evergreen that is in downtown Olympia and other parts of Thurston County."

The danger to both the Evergreen community and its Public Safety officers is further accentuated by the assault against unarmed officer Kirk Talmadge last Wednesday morning when he attempted to prevent a suspect from further vandalizing a vehicle in F lot. Although Talmadge was not seriously injured the incident will undoubtedly be added to the arsenal of arguments for arming Public Safety Officers.

The issue of a TESC armed police force is not just about, "strapping on 'six-guns' - it just doesn't work that way," says McClanahan.

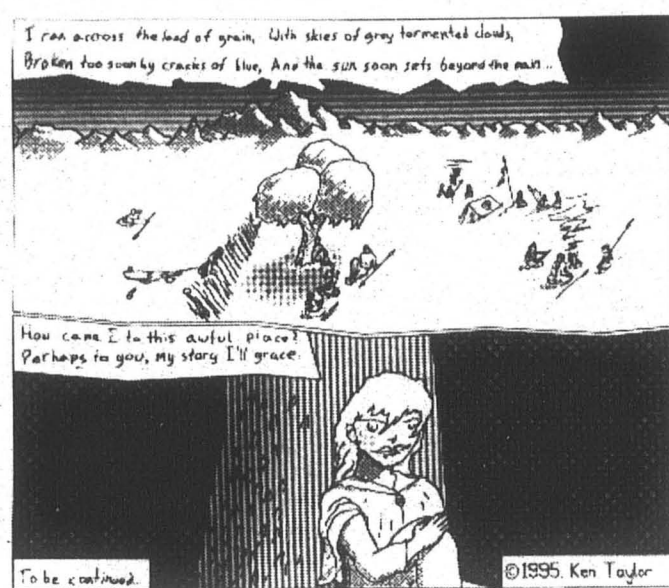
McClanahan, whose position requires him to make professional recommendations regarding the overhaul of the Public Safety Department, insist that, "there needs to be a fully equipped and fully trained -

underline trained - law enforcement agency," on campus. He points out that, "more than 90 percent of the arrest [at TESC] are of people who have no business on campus."

This 1974 TESC graduate who wears a side arm because of his primary occupation as Undersheriff considers himself a part of the Evergreen community. McClanahan hopes that, "together [as a community], students will look at what's coming down the pipe to prey on them."

**"In order to enforce these laws you need to become a law enforcement agency."**  
- Officer Larry Savage

**Wanderlust by Ken Taylor**



©1995, Ken Taylor

# TESC adds sports teams

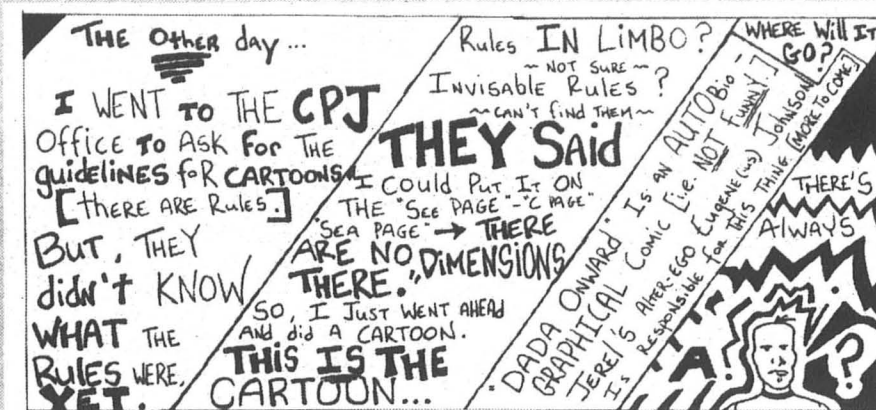
Con't from SPORTS page 1

The differences between the current NAIA affiliation and the NCAA are the costs of membership and insurance. The NCAA also requires participation in at least four sports, whereas the NAIA requires one. Division III also prohibits athletic skill based tuition waivers, which Evergreen has used in the past. This could save the college anywhere from \$30,000 to \$60,000 a year depending on how the financial needs of the student athletes are addressed. Costantino would like to see those athletes already recruited continue to use their tuition waivers. But the school has no legal obligation to provide them after one year.

According to figures provided by Costantino, the NCAA Division III's slimmer membership and insurance costs, elimination of athletic skill based tuition waivers and subsidies for teams that go on to championship play, put the school in a position to host four sports for the price of two. Costantino estimates that the additional expense would be \$30,673 to add basketball and tennis. The additional savings and potential revenue from the addition of the two sports could be \$31,485. This does not include the potential savings from the elimination of tuition waivers.

Costantino and Pete Steilberg, Evergreen's Director of Recreation, Wellness and Athletics, spearheaded a process in May to gather feedback from the Evergreen community. Three hundred students, faculty, staff and alumni responded with 84 percent approving the change. Costantino sent his findings and recommendation to President

# Dada Onward by Jerel Johnson



Jane Jervis. Jervis then consulted with Evergreen's Board of Trustees. The board approved and Jervis made the decision to switch leagues. With a basketball court and tennis courts already existing on campus and support for both sports, those sports seemed the most logical to add.

"We found strong support for basketball and a number of students said they would enjoy attending basketball games. It was pointed out that we have an ideal facility for basketball that should be used," says Costantino. "There was also interest in tennis because we have courts and because the presence of a spring sport was seen as desirable," said Costantino.

Even with the majority of the polled Evergreen community favoring the move, the plan didn't avoid criticism. As Costantino's written recommendation to Jervis stated: "Individuals who opposed the addition of sports thought that the funds for athletics should be directed to support other institutional needs. Some who were opposed to sports asserted that they foster undesirable values."

Evergreen sports will start out with an independent status because there is not a regional league in which the school can compete. It will play regional teams, but it will qualify for post-season play based on a win-loss formula as opposed to a league championship birth.

# A winning season for Geoduck Womens' Soccer

by Cedrus Fox-Dobbs

Until just recently the success of the Evergreen women's soccer team had been one of this campus' best kept secrets.

Last year's 3-17 record didn't offer many exciting moments. But despite their Sept. 27 loss, the team's record this year is at an impressive 8-4.

With eight returning women, the squad has the experience and leadership of a playoff team. Combined with raw talent from this year's new women and a rigorous, more conditioning oriented practice routine, the women's team has been producing excitement comparable to other nationally ranked teams.

With Evergreen moving to a NCAA III rating next year, the women's soccer team won't be eligible for playoffs until 1998. The two year probation is a trial period to show that the team will be able to play with the tougher competition.

Amy Sprague, the league's top scorer, stressed that this mandatory probation creates a strong motivation

for third and fourth year students to lead the team to a playoff berth.

Starting with a startling three game sweep at the Evergreen Invitational Tournament, the team has used consistent defense and clutch performances to ensure that they are playoff contenders.

Last Friday, September 22nd, the team produced five goals to blow out Albertson College 5-0. The team's offense was powered by a three goal effort from Evergreen's

captain, Camille Morgan. Kim Wilkins, an outside half/forward, mentioned, "with continued team effort and hard work during practices and games, this year should end with a post season appearance."

**"With continued team effort and hard work during practices and games, this year should end with a post season appearance."**  
-Kim Wilkins, Geoduck Outside/ Half Forward

If this report is not enough evidence to start following the team's spectacular progress, come out and see for yourself on Wednesday, October 4th, as Evergreen's women battle The University of Puget Sound in a very important league game.

**RUNNING**  
Call x6532

**VOLLEYBALL**  
Call x6533

**BLUE HERON BAKERY**  
4935 MUD BAY ROAD  
OLYMPIA, WA 98502  
866-2263

Breads, Pastries, Organic Espresso, & so much more

7 AM to 6 PM DAILY

Whole grain baking since 1977

**BASKETBALL**

**WOMEN'S AND MEN'S**  
Call x 6532

**PIZZA TOGETHER!**

**MEET at Janna**

120 N. Pear • Olympia • Reservations: 943-9849

**Welcome Students**

**LYNCH PAINT CO.**  
paint, art supplies wallpaper

Evergreen discount on paint and art supplies.

Ask about Pristine paint, out environmentally friendly paint.

501 East 4th Ave., Downtown Olympia 943-1170

**Benjamin Moore PAINTS**

**BAGEL BROTHERS**  
Bagel Bakery and Sandwich Shop

~ OVER 15 VARIETIES BAKED FRESH DAILY ~  
~ OPEN 7 DAYS A WEEK ~  
~ ESPRESSO ~  
~ CATERED TRAYS ~

M-F 7-7  
Sat 8-6  
Sun 8-5

**OLYMPIA**  
Between Ernst & Payless  
400 Cooper Pt. Rd.  
352-3676

**LACEY**  
Next to Fred Meyer  
720 Sleeter Kinney Rd.  
456-1881

180 Varieties of beer Organic Wine

**Eddy's GROCERIES**  
OLYMPIA, WA

Tues-Sat 10-9:30 357-6316  
Sun 11-8:30 903 N. Rogers  
(Next to Olympia Food Co-op)

**Marich Art**

Art Classes  
Drawing  
Painting  
Sculpture  
Ceramics

...on the wind of new ideas!

200 Division St. NW 357-9188

**OCTOBER IS CUSTOMER APPRECIATION MONTH**

**THANK YOU SPECIALS**

**3¢ COPIES**  
Limit 500 per customer, 8.5" x 11" White paper.

**49¢ FAX**  
Sending & Receiving,  
Continental U.S. transmissions only, per page. Phone charges may apply.

**\$2 OFF SHIPPING**  
UPS® overnight Only.  
One per customer, per day.

**EMBE MAIL BOXES ETC.**

It's NOT WHAT WE DO.  
It's HOW WE DO IT:  
1001 Cooper Pt. Rd. SW #140  
Olympia, WA 98502 • 705-2636

Other merchandise at participating Mail Boxes Etc. Centers.  
Expires October 31, 1995. Restrictions may apply.  
Mail Boxes Etc., Franchise Centers are independently owned and operated. ©1995 Mail Boxes Etc.

**Ed's Pizzeria**

**"The Theme is Community"**  
Delicious Food Made Fresh Everyday.  
357-8187

"Best Breakfast in Town!" • Organic French Roast Coffee  
Opens at 8am. Mon-Sat.  
406 4th Ave. E. • Downtown Olympia

Look for our Pink Door

**The Old School Pizzeria**  
NY Style Pizza!  
By the slice  
or whole pies  
786-9640  
Monday-Saturday

**100% CHEESE !!**

**COOPER'S GLEN APARTMENTS**

**Welcome Students**

3138 Overhulse Rd NW 866-8181

**VILLAGE MART**  
Right Around The Corner

FRESH EGGS  
BISCUITS

BP GAS • SALADS & SOUPS  
MOVIES • ESPRESSO • FAX  
SERVICES • UPS SHIPPING • 5¢ COPIES • SANDWICHES • BEER

3210 COOPER POINT RD. 866-3999

**Field Guides**  
Birds-Plants-Mammals  
Marine-Amphibians

Local, Regional & Worldwide!  
We also special order  
MON-FRI 10-5:30, WED 10-9:00  
SAT 11-4:00

**The WILD SIDE NATURE STORE**

507 Washington St. SE - Olympia - 754-8666

**BADMINTON**

Call x6532

**The Pleasant Peasant**  
fresh food restaurant

Organic Vegetarian/Vegan Cuisine & Fresh Seafood

113 4th Ave  
Downtown Olympia  
To-go orders welcome!  
705-3645

Breakfast served Saturday 10-noon  
Sunday brunch 10-2 Closed Monday  
Lunch and dinner Tuesday - Saturday

**TRADITIONS - A Fair Trade Folk Art Store**  
From 30+ countries, From countless coops and responsible working units

Clothing - 100% Hemp Jeans, Cotton Ikat, Block Print, Embroidery....  
Jewelry - Silver and gemstone earrings, beaded and stone necklaces  
Musical Instruments - Drums, flutes, rattles, anklungs, mbrias or baskets, Bags, Hats, Pottery, Cultural Artifacts, etc....

421 Water St, Oly. 705-2819 Between Capital Lake and Percival Landing  
A Member of the Fair Trade Federation and Coop America Business Network

**WOMEN CARING FOR WOMEN**

All services are free and Confidential

**CRISIS PREGNANCY CENTER**  
of Thurston County

24 HOUR HELP LINE  
753-0061

**FREE SERVICES OFFERED:**

- \* Free Pregnancy testing
- \* Education on pregnancy, abortion and alternatives
- \* Counseling services: Individual, Group, Crisis Pregnancy and Post Abortion
- \* Clothing and furnishings to accommodate both mother and baby
- \* Parenting classes
- \* Post abortion support groups
- \* Referrals for adoption, medical care, legal assistance, or other needed community services
- \* Educational presentations: abstinence, fetal development and abortion issues

1416 STATE AVE. NE OLYMPIA, WA 98506

# Public Safety busts theft ring

by Dawn Hanson

Another reminder of Evergreen's vulnerability to crime came to light this week as Public Safety busted a burglary ring comprised of five Olympia-area high school students ranging from ages 15 to 17 years old.

According to Larry Savage, Sergeant of Evergreen's Public Safety, some of members of the Capital High School swim team returned to the women's locker room on Monday, September 25, to find that their lockers had been opened and their belongings stolen.

In all, there were "seven or eight victims (on Monday), only one of which used a lock."

From these thefts, \$859 worth of clothing, beauty products, jewelry, were stolen. This does not include credit cards, identification cards, and "things of that nature."

The victims recognized the suspects as classmates of theirs from Capital High School. Officer Lana Brewster's investigation was followed up on Tuesday by Savage and Officer Bob McBride, who talked to three of the suspects at their school. An additional suspect, who is not currently enrolled at Capital has also been interviewed in connection with the theft. The fifth suspect is being interviewed on Thursday.

Savage says that all three admitted in interviews to being behind the Monday night thefts. One girl admitted to stealing items from the CRC "on nine occasions in the last eight months." In addition, Savage believes these girls have been involved in several burglaries in the Olympia area.

While interviewed, the suspects told Savage that they "walked right in the front door (of the CRC) like one of the swim team" and

headed into the women's locker room. Although only one of the lockers had a lock on it, Savage says that it would not have been a problem for the teens to break into any of the lockers anyway. This is because one of the girls had "a pair of bolt cutters down her pants" which she concealed by wearing a sweatshirt.

Currently all of suspects are being charged with criminal trespassing for this incident. They will also be investigated for their involvement in other campus thefts. Savage says that they could "have up to 25 to 30 victims." Since all of the suspects have confessed to their involvement, Savage says they will most likely be prosecuted and punished.



Hose-Head

by Josh Knisely

# Come Join The CPJ

and draw comics  
so funny, your mom will  
tape them to her fridge.

That Saucy Velasco by Christian Cogan



## ALL THE BANK STUFF YOU'LL NEED.



**First, the basics.** You need a checking account. Open a VERSATEL® account, and you also get a deal. You won't pay a monthly service or per-check charge and you won't have to keep a minimum balance. And if you really love your school team, your first order of 200 team checks is free. You get a free VERSATEL® ATM card, too.

**Stop rushing around.** You can do most of your banking by phone 24 hours a day if you keep really weird hours. And savings and checking accounts are linked to make things really easy. That will give you a lot of convenience – at the ATM, too, where you can transfer from one account to another. There are lots of

ATMs and bank branches everywhere you are – even in grocery stores, where you can bank on the weekend. **Put your best face forward - and then charge.** But be careful. Your card will look just like you.

Yes, your Seafirst Photocard® Visa® or MasterCard® has your photo on it – added free, of course. **Feel the need for speed?** Take out a loan for a new or used car. Get a great deal on your student loan, too.

**Can we talk?** Sure. Anytime. Stop by the branch listed below, or call us 24 hours a day at 1-800-442-6680 (TTY/TDD users may call 1-800-358-6299) to find out about choices for the way you want to bank.



West Olympia Top Foods Branch, 1313 Cooper Point Rd. SW, 352-4280 • Black Lake Branch, 910 Black Lake Blvd., 754-3630

## HEY KIDS!

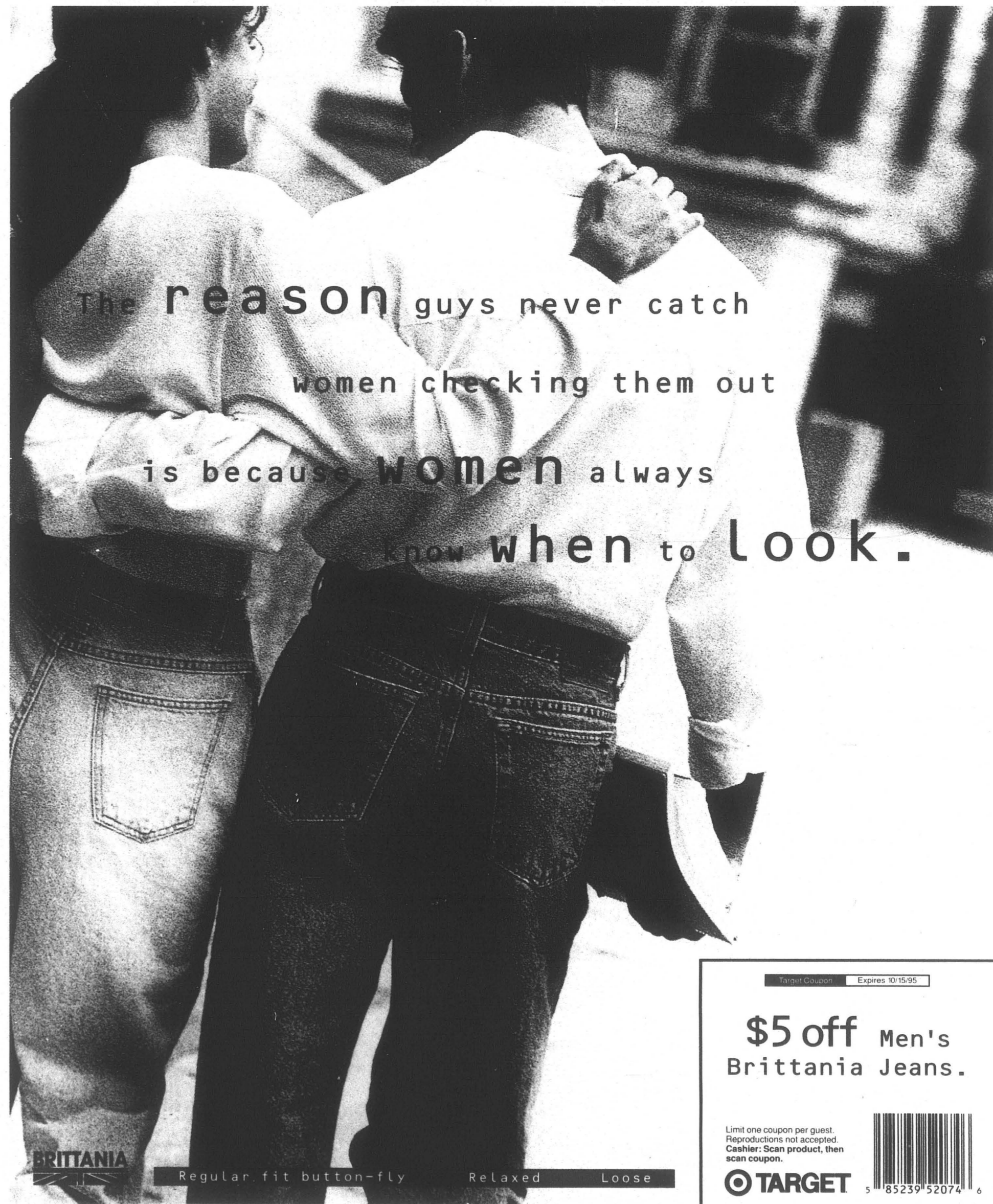
Come tell us what you think of this and every week's issue of the Cooper Point Journal at the CPJ review sessions. The big event takes place every Thursday at 4 pm in CAB 316.

## Used Furniture

Under 100.<sup>00</sup>  
Liquidated from  
Luxury Hotels

**The Furniture Store**  
321 4<sup>th</sup> Ave. E.  
Downtown, Olympia  
(360) 753-3780

**Save 20% Through October**  
**The Furniture Store**  
321 4<sup>th</sup> Ave. E.  
Downtown Olympia  
(360) 753-3780  
Expires 10/31/95



The reason guys never catch women checking them out is because women always know when to look.

Target Coupon Expires 10/15/95  
**\$5 off Men's Brittonia Jeans.**

Limit one coupon per guest. Reproductions not accepted. Cashiers: Scan product, then scan coupon.



BRITTONIA Regular fit button-fly Relaxed Loose

# Welcome to the world of a self-proclaimed neurotic

by Ariel Burnett

I recently moved into the perfect house. My roommates and I were lucky to find a place with all the amenities: washer, drier, dishwasher, gas fireplace... Of these, however, it is the latter that has caused me the most concern. Every evening before I retire to my room, I cast a nervous eye on the fireplace, hoping it is completely off. Even with that reassurance I spend a few restless moments in bed, fearing that I will awaken to a gigantic explosion. Or worse yet, never awaken at all, suffocated to death by gas fumes.

I want to open the closet door, throw a little light on the bogeyman, and then make fun of him as well.

Welcome to the world of a self-proclaimed neurotic. I say "self-proclaimed" because I in no way wish to make

light of serious mental illness (plus, I react rather badly to angry mail). Although things like being constantly aware of the myriad of possibilities to die can get tiring at times, there are some positive aspects to having a neurotic state of mind. It often allows me convenient excuses ("I'm not lazy; I'm paralyzed by self doubt!") and I consider myself in relatively good company. The majority of the really interesting people I know indulge in at least a few minor neuroses. In fact, I firmly believe that well-adjusted folk tend to be boring, if not downright annoying.

My worry-wart tendencies came to me naturally. I descended from a long-line of

neurotics. I have a mother who is immovable in her belief that destruction waits for her offspring around every corner; a father who searches current events for apocalyptic signs, a sister who ducks every time someone honks their horn because she fears gunfire, and a grandfather who routinely buys books on government UFO coverups and distributes them to relations.

Think what you will, but I strongly suspect that my family and friends are not atypical. We live in an anxious age. Such subjects as the depletion of the ozone layer, rising crime rates, and the shrinking job market are not solely topics of conversation for media types, but the basis for Saturday morning cartoon episodes. Recycling is not simply a good idea, it is a guilt-induced complex.

Once you get in the habit of worrying, it's difficult to stop. Getting hit by a bus may not be as monumental to mankind as the destruction of the rainforest, but it's just as real. The point of this column is to expose fears. I want to open the closet door, throw a little light on the bogeyman, and then make fun of him as well. If you can't laugh at your neuroses, how can you conquer them? If you have any particular anxieties you want discussed either e-mail me, burnetta@elwha.evergreen.edu, or (for the technophobes among you) regular old write me care of the CPJ. If not, I have plenty of my own.

# Group gives Greeners chance to explore God

By Greg Smith

Vampires to WashPig, MECHA to ASIA - the possibilities of student involvement are many and diverse. Speaking of diversity on campus, I would like to tell you about Evergreen Students for Christ. We are a group that invests time together studying

fundamental in this universe than cynicism, pain, and hopelessness. God exists. God deeply loves, accepts, and forgives us. God revealed himself in Jesus to create and show every human the way back into relationship. The growth possibilities are communicated in a trustworthy Scripture and the personal presence of God's Spirit.

We desire, to express the love of Christ in some concrete ways, personally and as a group. We don't schedule the personal times, hopefully it happens frequently. However, the group meets Wednesday afternoons to visit some of the forgotten elderly people at a nearby

nursing home. Over Spring break, this past year, we traveled to Mexico to assist the locals in a food and clothing distribution.

To communicate with student coordinators send mail to Students for Christ, CAB 320.

Many of us in the group experience love being more fundamental in this universe than cynicism, pain, and hopelessness.

- Animation Cells
- Acrylic Paints
- Airbrushes
- Blockprinting
- Balsa Wood
- Books
- Brushes
- Clayboard
- Clip Art
- Calligraphy
- Coloring Books
- Cutting tools
- Construction Papers
- Canvas - Rolls or Stretched
- Charcoal
- Candle Making supplies
- Clay
- Drawing Boards
- Etching Plates & Tools
- Easels
- Egg Decorating Supplies
- Exotic Papers
- Foam Board
- Face Paints
- Fabric Dyes & Pens
- Fabric Paints
- Gold Leafing
- Glazes
- Graphic Art Supplies
- Glues
- Kilns
- Inks
- Kids Art Supplies
- Light Boards
- Marbling
- Markers
- Mat Boards
- Mylar
- Mold Making
- Modeling Clay
- Oil Paints
- Origami
- Pastels
- Pencils
- Plasters
- Plaster Gauze
- Potters Tools
- Pigments (Raw)
- Pens
- Papermaking
- Porcelain Slip
- Portfolios
- Presentation Cases
- Potters Wheels
- Poster Board
- Rubber Stamps
- Raw Tiles
- Scratch Boards
- Screen Printing
- Stencils
- Stone
- Stone Carving
- Sumi Supplies
- Technical Drawing
- Watercolors
- Watercolor Papers
- Wood Burning
- Wood Carving

Olympia Potters & Artists Supply, Inc.

# OPAS

Under New Ownership



20% off

Strathmore paper through september.

Up to 50% discount on selected merchandise

(regular student discounts do not apply on sale items)

9 am to 6 pm Monday thru Friday  
9 am to 5 pm Saturday

(360)943-5332

1822 Harrison Ave. N.W., Olympia, WA 98502

# Corporate takeovers could strip our freedom

By Carson Strege-Flora

In traditional lore, the new school year is supposed to bring hope and optimism. For incoming students, it means a chance to build a budding new life. For returning students, it is a chance to wipe the slate clean and start over.

The campus abounds with energy and enthusiasm. New ideas begin to form and new goals start to shape.

But for feminists and others working for social change, this new school year doesn't bring optimism but dread. For the first time in several years, we face a political climate that is not just uninterested in our concerns, but openly hostile. Instead of simply not caring, they now want to stamp us out.

On top of that, we face an increasingly consolidated media, making it more and more difficult for our side of the story to be told. While it was never easy to get a fair shake in the mainstream media, it has now become near impossible.

With all the concern about the new U.S. Congress, the media mergers may have been overlooked. Walt Disney's purchase of Cap Cities (which owns ABC) and Westinghouse Electric's purchase of CBS is a lot more frightful than previously realized.

As an indication of what is yet to come, last month ABC bowed to its knees to Philip Morris.

A quick re-cap — ABC's DayOne (a news magazine show) ran a story on nicotine and alleged that tobacco companies spiked cigarettes to make them more addictive.

In a rage of fury, Philip Morris filed a \$10 billion (yes that's billion with a b) libel suit in March of 1994. Like a good network should, ABC stood up for its reporters (who maintained the report was accurate) and promised to fight the libel suit.

Philip Morris faced major obstacles in the courtroom: ABC would only need to show that its broadcast was "substantially true". Even if ABC failed at that (which new evidence shows that they might have), Philip Morris would have to prove that ABC acted with mal-

ice, with reckless disregard towards the truth. This would be a nearly impossible burden for Philip Morris.

But this summer, in a stunning reversal and disregard for the integrity of the news division, ABC capitulated. They agreed to run groveling, pathetic full page ads in all major newspapers and run statements on the air apologizing to Philip Morris.

So what was going on here? Why would ABC compromise its news division? Even though the news team maintains that what they did was true, ABC sold them out. In journalism, that betrayal is tantamount to Judas' kiss. Without the support of the people at the top, a news team is nothing.

And suspiciously, ABC most likely would have won the suit. Proving libel would be very, very difficult, if not near impossible for Philip Morris.

The betrayal might have something to do with that sweet family company called Disney (that brings us such wonderfully sexist and racist films like Pocahontas and Aladdin). A key person in the negotiations admitted that the

lawsuit "came up" in discussions about the buy out. Most likely, Disney didn't want to be plagued by this ugly little lawsuit at the beginning of their take-over

and thought several million in legal fees and covering advertising was worth keeping their nose out of the news.

This is just one small example of what is yet to come in the broadcast news world. How many reports on the defense budget or criticism of nuclear energy do you think we'll see on CBS with Westinghouse as the new owner? How many reports about slave labor do you think we'll see on ABC with Disney as the owner?

And the newspapers are no better. With rising news print prices and a new concern for the bottom line, we are seeing more newspapers closing and more fear of critical reporting.

It's not a pretty year for getting the truth told. This is where this column comes in. Albeit a tiny prick in the heart of the prodigious colossal monster that we all too affectionately call "the media", this column will question the coverage of the media giants.

With a decidedly feminist perspective, this column will take a fresh look at the treatment of people and issues in the media, like our friend Shannon Faulkner and the Citadel, Courtney Love, the Women's Conference in Beijing, Bob Packwood, or Mike Tyson.

If you have observed an obvious distortion in the media, bring it on up to the CPJ and we'll see what we can do.

# LIES

Free ice cream on the 13th floor of A-Dorm.

Every winter, bears and other creatures go into a cave and sleep for a long, long time.

Cancer makes you popular.

Glitter is a valid source of Potassium.

50,000 ants are needlessly slaughtered to make a single fruit roll-up.

Whenever a pet shop owner leaves his shop, all the pets come to life and hold a magical jamboree. Then, when he turns, they scamper into their cages and turn back into pets before he can discover their enchanted secret.



by Mike Harris

## Student Governance Opportunities

A number of Disappearing Task Forces (DTF) and Committee's are seeking student members. Student input is critical to the functioning of the College and serving on a committee or DTF will provide you with opportunities to influence College policy and learn more about the College. The following groups are seeking student members:

1. Student Conduct Code Hearing Board (six students): Members of the Student Conduct Code Hearing Board share responsibility for determining the facts associated with alleged violations of the Student Conduct Code and initiate sanctions when appropriate.
2. Infraction Review Committee (two student who are compensated): The Infraction Review Committee hears appeals of parking violations.
3. Health and Safety Committee (two students): The mission of the Health and Safety Committee is advocacy of a safe and healthy environment for the Evergreen community.
4. Copyright & Patent Board (1 student): The Copyright & Patent Board advises the College on interpretations and applications of Copyright and Patent Policy and reviews the policy drafted for the College.

For further information about these governance opportunities or to obtain an application please contact the Office of Vice-President for Student Affairs, 866-6000 ext. 6292, Room L3236.

How many reports about slave labor do you think we'll see on ABC with Disney as the owner?

MARTIAL ARTS  
Call x6532

OFFICE TAVERN  
Any single food item on the menu **free** with the purchase of second food item at the same or greater price.

micro beers on tap!  
pool/ darts/ satellite sports  
limit one to a customer (excludes specials and orders to go) expires 11-15-95  
2030 Mottman S.W., Tumwater  
754-5760



Hours:  
Mon.-Thu. 8:30-6:00  
Fri. 8:30-5:00  
Sat. 11:00-3:00

# WELCOME TO EVERGREEN'S

# LONGHOUSE

## EDUCATIONAL AND CULTURAL CENTER

### LONGHOUSE DEDICATION CEREMONY

#### CELEBRATES THE DIVERSITY OF NATIVE NW NATIONS

"According to ancient oral tradition, a longhouse was an expression of the Great Creator, made for the benefit of the people. It was a home and a school, as well as a spiritual, cultural and economic center that provided shelter for whole villages. Longhouses also served diplomatic forums for trade, bringing together dignitaries from many nations. Through ceremony and celebration, the people learned to value hospitality, education and community." - from the Longhouse dedication program.

by Naomi Ishisaka

While Evergreen's longhouse may be different than the above description, it will be no less exciting or influential.

Evergreen's longhouse center is a mix of historic and contemporary designs and needs but emphasizes the philosophy of the Northwest Salish people.

The Longhouse will also meet a critical need for classroom space, will house the Native American studies program and "a multi-purpose space for lectures, exhibitions, performances and hospitality for the campus and the extended communities of Washington state."

The 20 year road to the completion of the project was a long one. According to Longhouse project coordinator Colleen Ray, the idea for the project came from Evergreen founding faculty and member of the Lummi Nation, Mary Ellen Hillaire.

Her vision, which was expressed as early as 1973, was of a gathering place for Native Americans and the rest of the local community. A longhouse was an ideal model for such a need.

Longhouses are a traditional part of Pacific Northwest tribal nations. Their designs are simple with poles, planks and benches connected to form an extended household.

Consistent with tradition, Evergreen's Longhouse is made mostly of cedar, 30 percent of which was donated by the Burke museum in Seattle.

The hearth is a significant part of the traditional longhouse structure and is a focal point in Evergreen's structure.

The location of the longhouse is also significant. Water is traditionally an important element in deciding where a longhouse will be located. Pacific Northwest nations built longhouses on the beach and the location of Evergreen's longhouse was chosen because of the proximity to Dogtooth Lake.

The collaboration between regional members of Indian

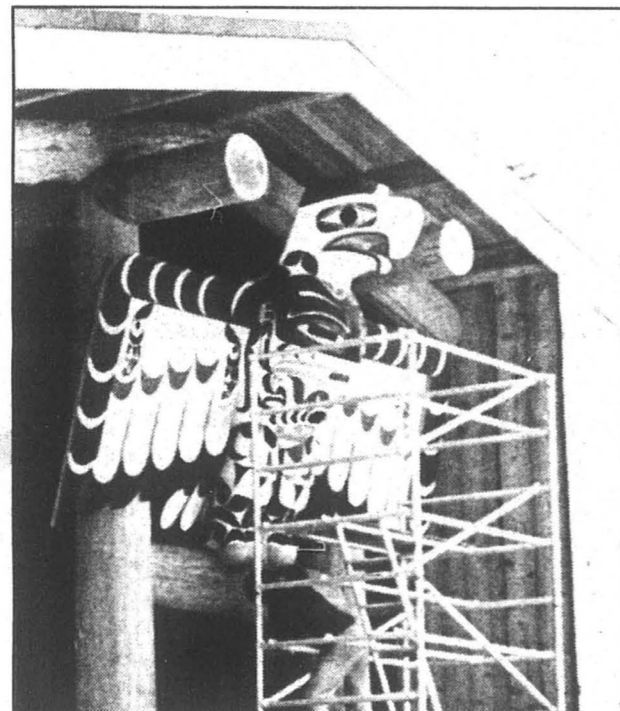


photo by Reynor Padilla

Sculptor Greg Colfax finishes painting the thunderbird on the front of the longhouse.

nations and Evergreen's Longhouse planning committee in the design and structure of the longhouse has been a unique phenomenon to the longhouse.

Regional Indian nation members were on the planning committee, consulted with on the proposed design, and critical in the ground breaking ceremony and the dedication ceremony.

The open structure of the traditional longhouse has been adapted at Evergreen to have movable walls that can create small rooms, large conference facilities and seating around the central hearth.

### Facts about the Longhouse:

- Capacity is about 800
- Thirty percent of the cedar wood used in building the longhouse was donated by the Burke museum in Seattle
- Classes, conferences, potlucks and seminars can be held in the Longhouse because of its movable walls
- The Longhouse has a full kitchen and can be booked by student groups
- The building cost over \$2 million to build
- The building was the brainchild of Mary Ellen Hillaire, former Evergreen faculty
- There are 10,000 square feet to the Longhouse

by Naomi Ishisaka

A dream that was 20 years in the making finally came to light last Friday as Evergreen celebrated the completion and dedication of the nation's only college longhouse.

Over 1500 people came out to Evergreen's Longhouse Education and Cultural Center as it was dedicated in a host of speeches, poems, dances and songs.

The low, wide cedar longhouse was the backdrop for guests like Makah elder and emcee John Hottowe, Gov. Mike Lowry, Evergreen's Native American Studies Convener David Whitener and President Jane Jervis. The guests expressed their appreciation for the hard work and effort of the many people who contributed to the project.

The inter-tribal theme of the longhouse project was well-represented at the dedication ceremony with dancers and singers from the Makah nation, the Yakama nation, Inupiaq, S'Klallam, Hawaiian, Twana and with traditional plains style dancers.

Prominent artists like singer Buffy Sainte-Marie of the Cree nation and author Sherman Alexie, Spokane/Coeur d'Alene nation were also on hand to share their artistic visions with a song by Sainte-Marie and a poem by Alexie.

After the many presentations, an intertribal paddle dance group created a symbolic boat to transport the special guests and tribal elders to the actual longhouse for the formal dedication.

After a blessing of the site, a "ribbon" of braided cedar was cut to open the building.

see Dedication on page 12

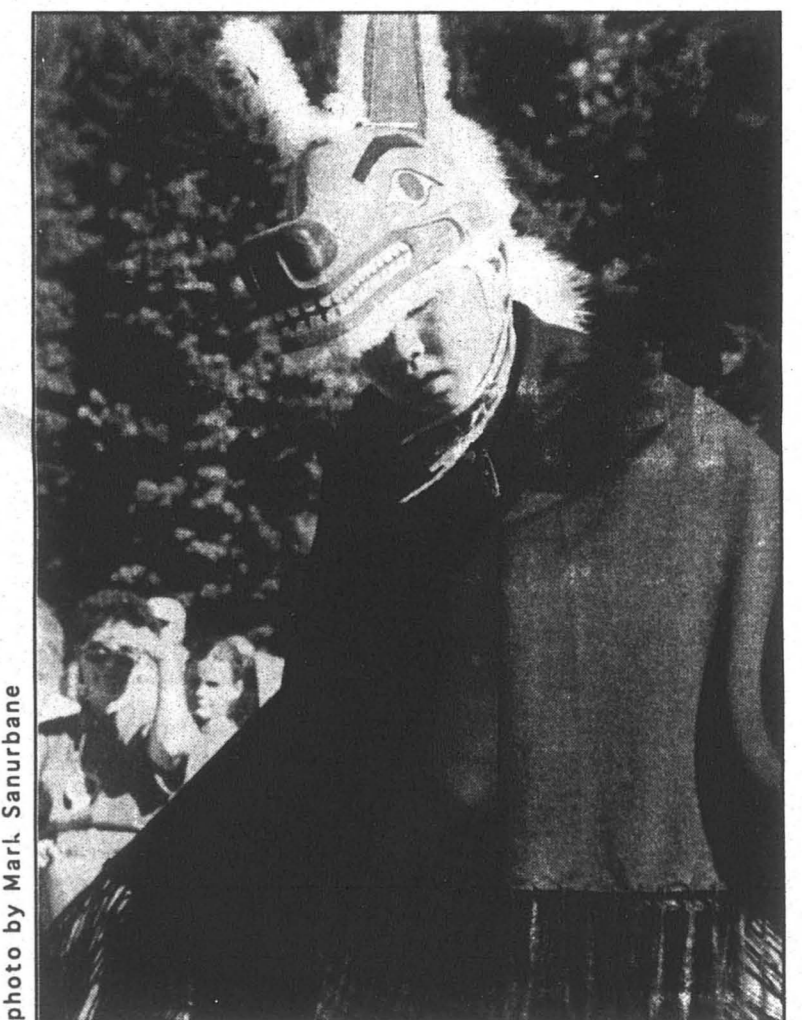


photo by Mark Sanurbane

Young member of the Port Gamble S'Klallam Dancers performs for the crowd.

by Nolan Lattyak

## SHERMAN ALEXIE

THE AUTHOR OF RESERVATION BLUES AND THE LONE RANGER AND TONTO FISTFIGHT IN HEAVEN SPEAKS

On September 21 and 22, Sherman Alexie a writer and speaker of Spokane/Coeur d'Alene Nation visited TESC to do model seminars for both CORE and transfer students and to be a part of the Longhouse opening ceremonies.

The seminar lecture on the last week was full of passion, confidence, humor, and insight. His words touched a common nerve among all the students and faculty attending. One person, moved by Alexie's words about hunger yelled out, "What can we do?" Sherman Alexie was quick to respond with "Get in the soup kitchens, start working for the people that really need the food."

Towards the end of the lecture, another student yelled, "Let's storm the capital!" Sherman Alexie said "All right, let's go!" Every person in that room was about seemed about one second away from just bolting out of their

seats and beginning a march.

Sherman Alexie was impressed by the fact that our community has enough respect for the Native American culture to assemble a longhouse. He said that it is especially rare in universities and places of higher learning to incorporate other cultures the way that Evergreen does.

"Every book, even fiction, is an autobiography," said Alexie. Sherman Alexie is a strong believer in this. Parts of the characters in his books are all drawn from certain life experiences of the author.

Of course there are always some exceptions. His newest book released is called *Reservation Blues* and it is about, "an all Indian Catholic rock and roll band." As he put it so well, "It really doesn't have to do with me."

I asked him if his original goal was to spread awareness of modern Native American life and traditions. He noted that a white writer isn't seen as a speaker for the white community, but when a Native American or other writer of color writes, they are seen as the voice of their culture.

When I asked him what he suggested for aspiring writers at Evergreen, he simply said "Read, edit, and revise." He said that too many writers see their work as pristine and perfect the first time through. As far as the discipline required to become a writer, he said that "It is the same kind of discipline required to become a plumber."

Currently, he is living in Seattle and is writing a murder-mystery called *Indian Killer*, which is based in Seattle.

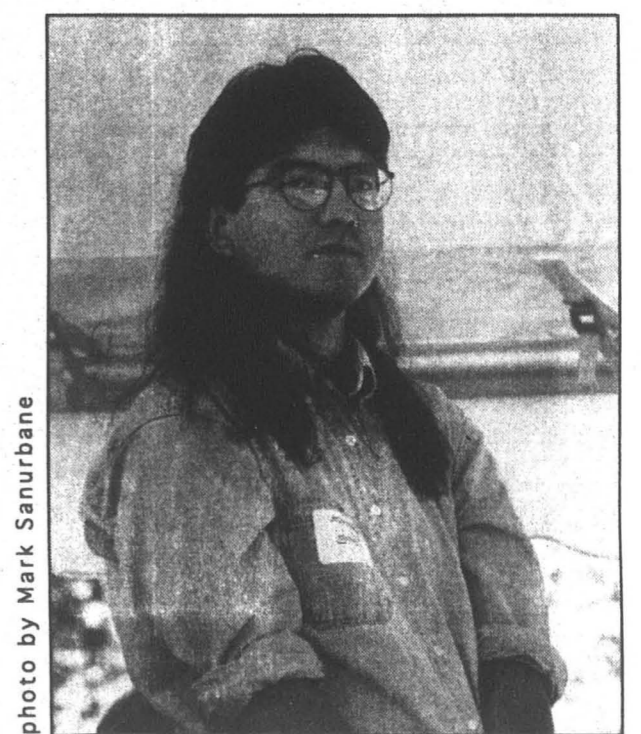


photo by Mark Sanurbane

Sherman Alexie



photo by Reynor Padilla

Evergreen's Longhouse Educational and Cultural Center is constructed with traditional cedar and with contemporary materials. The interior is adorned with ceremonial screens, artwork and the outside displays the thunderbird sculpture on the left.

# PERSPECTIVES



## BUFFY SAINTE- MARIE

### AN INTERVIEW WITH AN ARTISTIC LEGEND

by Reynor Padilla

This is the first part of an interview I conducted with musician, actor, painter and dancer Buffy Sainte-Marie. Among other things she wrote, recorded and performed the incredible "Buried My Heart At Wounded Knee" and won Academy Award for the song "Up Where We Belong" which appeared in the movie "An Officer and A Gentleman." She was also a cast member on Sesame Street for five years.

These days she works almost entirely in the digital mediums, using a computer to write, make music, and make art. She'll be visiting classes at Evergreen over the next couple of weeks, where she hopes to empower her students, "to make them feel good about themselves, working in the area of self-identity, and self-esteem and art."

A schedule of the classes she will be visiting is posted at the Dean's office.

**I knew that you were a performer, that you were a musician, but I didn't know you were so interested in digital artwork, and lots of other artistic mediums. Could you tell us about that?**

I play music and I play with imaging as well, and I have since the time I was a little, like everybody else. I'm a natural musician and a natural artist, as opposed to someone who one day wasn't an artist, and the next day was taking art classes or music lessons. So I didn't learn music or art through the system.

Part of my teaching at Evergreen is going to be to encourage the natural thing in people. I do have a Ph.D. in Fine Arts but that's not why I'm an artist. I was an artist for the same reason that little children like to play with crayons and paper. If you put a little kid out on a sandy beach, they'll not only make rhythm on it. They'll also build sculptures and write their names and they'll make pictures. And if it all gets washed away they'll just make more.

That's the kind of artist I am. I started electronic music in the 60's, it was a time when you weren't supposed to do that sort of thing and I had been labeled a folk singer. So people were extremely upset to have a person that they associated with playing an acoustic guitar come out with the first ever totally electronic, quadrophonic vocal album.

I continued to be interested in electronic music and original instruments with the early bukla and sirge instruments. I'll be talking to the advanced music students and the beginning



electronic music students... through an interest in electronic music I was ready when the Macintosh came out.

I was approaching it from fun, play and experiment and I just couldn't wait to see a Macintosh. So I got one of the real early Macintoshes before they were in the street, I've still got my original Mac, it's got a real low serial number. I have it more as an art piece now. But the first day that I had a Macintosh I discovered that I could really sort of glue my brain together as an artist, by writing a story, making a picture, and writing a song on the same piece of equipment. And that's the way I am.

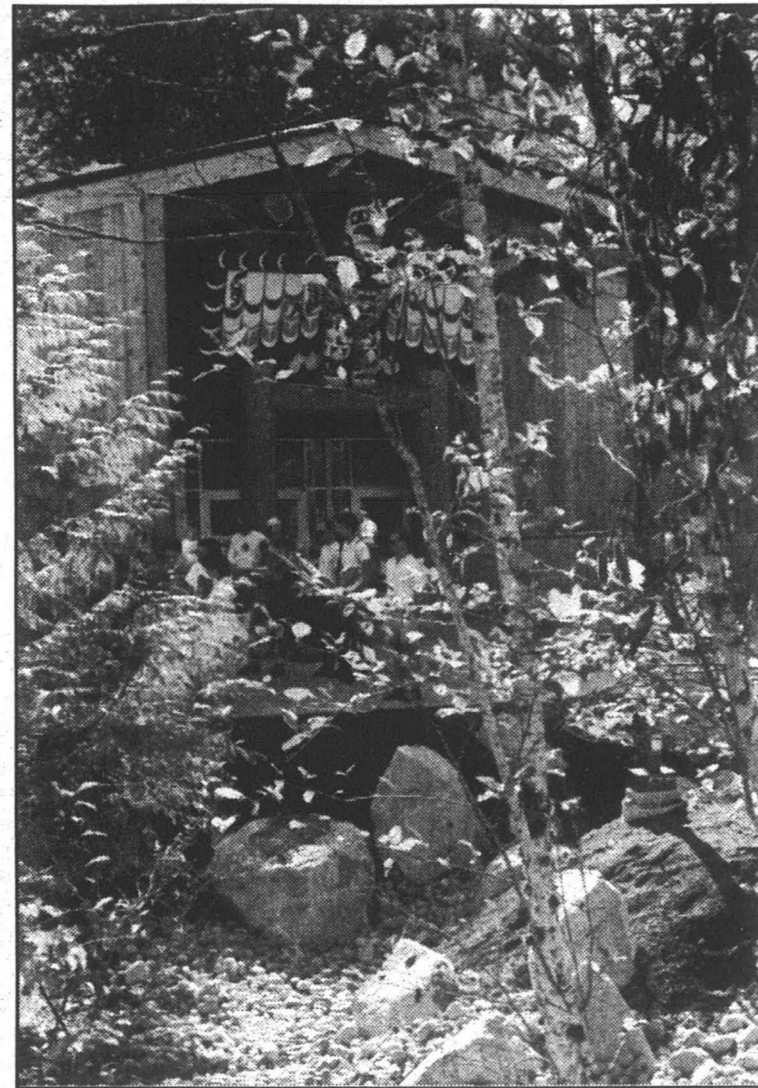
I'm the kind of person that makes a painting, makes a story, and makes music on the same day. And many, many other people are. I'm interested in letting people know about my digital paintings from the educational point of view because I think many artists are multi-talented but don't know it. So in a way it's a way to encourage artists into experimenting on other fields. Digital dance, digital writing, digital painting, digital music I think are all possible in the same artist because I think an artist is basically a person that is working with basic design units of compare

and contrast and movement. Whether it's movement of the body, movement of the music, movement of the line, you're manipulating mental images. And the Macintosh is a cool little tool, because of the cut and paste feature, it works like a person's mind.

**What brought you back to Evergreen?**

The enthusiasm here on campus is what brought me back after having done a concert. So it's a thrill. I'm adjunct professor of

## OF EVERGREEN'S LONGHOUSE DEDICATION CEREMONY SEPTEMBER 22, 1995



Top left: Pauline Hillaire, Lummi, member of the design team and Mary Ellen Hillaire's sister watches the ceremony.

Top right: A view of the Longhouse through the natural landscaping around the building

Bottom left: Mike James, Port Gamble S'Klallam.

Photos by Jeremy Kershaw

fine arts and in Saskatchewan, and I'm artist in residence from time to time at the Insitute for American Indian Arts in Santa Fe. But here at Evergreen I'm able to apply these area skills that I enjoy participating in and sharing on a more intellectual level, on the level of comparing ideas, contrasting ideas, experimenting with the full potential of what a person can do with the human brain.

**Do you find that you're a lot more able to do that at Evergreen, compared to these other schools that you've been to? You know that Evergreen's philosophy is to bring lots of different skills and abilities together and fuse them into a whole, does that help you?**

Yes, it's nice, it's like I can extend myself beyond the world of the arts, into the rest of my life, where I also function. The other two colleges that I've been working with most recently are... well naturally after hours we can talk about everything under the sun, but here we can do that in the classroom as well. It's very nice to see.

Basically the name of my game is creativity, wherever it's invention, the arts, or just thinking. I feel as though we're all made in the image of the Creator, that means we create. We create our world, we create the newspaper stories, we create our art, we create our children, we create our life. But nobody tells us that we can, because basically until it's turned into a commodity there's no money in it. Like breastfeeding and the environment, people don't really support the things that are natural gifts that every human being has. So I'm trying to turn people on to their own potential and answer their questions that they might come up with. For instance some of the advanced music students probably wondered how do they get to score a movie, how you win an academy award, how you go on the road.

**This interview will continue in next week's issue of the CPJ.**

# Michelle Pfeiffer taught at my high school

*Dangerous Minds, LouAnne Johnson and Carlmont High*

by Andy Schoenstein

It is a unique experience to see a major motion picture about the high school you went to, set in the time when you went there. It's a rare opportunity to see how Hollywood interprets reality, and to reflect on what was the reality for you at the time. I experienced just this last month in a Seattle movie theater. Walking into the theater, I was antsy and excited. I had a great urge to stand up before the movie started and announce to the bustling audience that I went to the high school that they were about to see depicted on the screen. I refrained from doing this, but this fact might have been evident to those sitting around me during the opening scene, due to the fact that I started crying only seconds into the title sequence, which, I'm sure, would be rather odd if I had no direct tie to the story. As the haunting violins sampled from Stevie Wonder's "Pastime Paradise" started in, grainy black and white images of a decrepit neighborhood adorned with graffiti and garbage set the backdrop for the start of the schoolday in East Palo Alto. Amid the drunks, the dealers and the crackheads, the students filter onto the bus. Although this image was created by Hollywood, it represented a missing piece in the puzzle for me. I knew where that bus was going. It was where it started that was unfamiliar to me.

East Palo Alto(EPA) stands on the edge of the San Francisco Bay along the S.F. Peninsula. It was originally the site of low income housing for many families starting out after World War II, built on the salt marshes of the Bay, on the east side of Highway 101, the main North-South artery along the Peninsula. As the post-war nuclear families got their footholds, they moved out of EPA to other suburban cities nearby. EPA shifted to an almost entirely black and Hispanic city, becoming an is-

land of poverty amid the relative wealth of the rest of the Peninsula. Probably due to the city's financial woes, the one high school in EPA closed its doors in the late 70's and from then on, its students were bused to the three or four schools that made up The Sequoia Union High School District, including Carlmont High School which served the small suburban cities of San Carlos and my hometown, Belmont, about a 30-minute bus ride north of EPA.

Stories were always told of the racial riots at Carlmont in the 70's and isolated incidents through the 80's. The cafeteria where most of the conflicts were said to have taken place was given the pseudonym "multi purpose room" and was never used for food consumption purposes when I was a student there. The "EPA kids", as they were referred to, generally co-existed peacefully with the kids from the area around the school, mutually complying with an unspoken policy of ignoring each other. With the exception of classes like Art and P.E., the two groups were usually segregated in the classroom. Both groups also kept a distance from each other because of fear and a little respect. Both groups knew nothing about the other's world, besides what they saw with their eyes, (there were nice cars in

Belmont) or what they read in the paper, (In 1991, EPA had the highest homicide rate per capita of any city in The United States). Both groups doubted that they could survive in each other's world. There was an underlying tension, though, a mutual xenophobia.

I witnessed an explosion of the hidden fears and resentments on the day war was declared in the Persian Gulf. A protest of the war was formed on the football field during 5th

period. I left class at the appropriate time to shout at the sky with all the rage that was fueled by my fear that, having just turned 18, I might be forced to kill in the name of huge oil companies and President Bush. Instead, I found myself shouting curses at fellow students who had formed a counter-protest in the bleachers, in support of the war. Two groups of mostly white and Asian kids blindly standing up for their parents political beliefs with all their teenage hormonal fervor. The


Without previous experience, Johnson was forced to use intuition. Her students had years of experience in diverting the attention of their teachers away from school-work. They were quick-witted, energetic, and there were a lot of them. Johnson found that she had to be quicker than all of them. She had to outsmart them if she was going to earn their respect. She used every creative idea she had to get them to think, she bribed them, and she was not afraid to get in their face when they challenged her. The students assumed that she hated them and thought they were stupid, like most of the teachers they'd had. Unlike other



LouAnne Johnson - academy 1990 yearbook photo.

entire student body eventually abandoned class to voice their parents' opinions; except the EPA kids. They stood off to the side on the road above the bleachers watching as the students in the bleachers countered the "NO WAR!" chant of the kids on the field with their clever retort of "WAR! WAR! WAR!". There was a small scuffle by the top of the bleachers between a war-supporter and an EPA kid. Seconds later, BOOM! All hell broke loose. The two large groups merged into one brawling melee as we on the field stared dumb struck. Our principal, campus security guards, and police officers who had arrived moments before, all got punched and even knocked to the ground. As the authorities fought to gain con-

see DANGEROUS on p. 14



**10.9% APR Visa**  
Books or clothes? You decide. Either way, our "Right Card" Visa offers you an unbelievable low fixed rate, a generous 25-day interest-free grace period — and we'll pay your low \$10 annual fee for the first year.

**Dividend-Earning Checking**  
Cap'n Crunchberries® and coffee. You gotta eat, right? Try our checking account. Get unlimited check writing for just three bucks a month, or no monthly fee with a \$300 average daily balance.

**Your Cash+Check Card**  
A full tank of gas. There's still the weekend, you know. Use it as a cash card around the world, or use it like a check with free, convenient access to your checking account at any merchant displaying the Visa logo.)

To apply, call 943-7911, or drop in to see us.  
400 E. Union  
Washington State Employees Credit Union

### OFS seeks volunteers for festival

by Liv Lindenberg

In its twelfth year, the Olympia Film Festival, produced by the Olympia Film Society, is going strong. The annual film festival will be open, starting on Friday the 20th and lasting through the 29th. It promises to be one of the premiere events in Olympia. As such, it will also be a gigantic volunteer effort, with forty programs needing at least two workers for each show.

Other volunteers are also needed for various positions, ranging from projectionists to ticket sellers to hospitality aides. All talents are needed, so if participating in a large community event with great venues that promises to be loads of fun sounds great to you, contact Demian Parker at the Olympia Film Society at 956-3461 or Devin Demante at 754-6670.

### AUTUMN AT THE MARKET!



The Olympia Farmers Market  
Open Friday-Sunday 10-3

**Coming Attractions:**

- October fest. Oct. 7&8
- Pumpkin Sculpting / Scarecrow Contest Oct. 27-29

Corner of N. Capital Way and Thurston  
On the Waterfront  
352-9096

The true story of LouAnne Johnson

DANGEROUS from page 13

LouAnne Johnson had to come up with her own policies in order to reach her students, and in several instances, found that she had to fight the school administration and her colleagues to be able to practice them. When she was able to motivate her class and they all received good grades, she was accused of having a grading policy that was too lenient. She learned quickly that she had to be discreet when helping students on a personal level, after being berated for paying for a student's much-needed eyeglasses and committing other acts of kindness. She fought to allow a pregnant student to remain in the Academy program after the administration had led the student to believe she was required to leave. One chapter in the book portrays a boy named Danny, a reclusive student who seemed to be lost in his own world. Johnson looked closely enough to realize that he was very intelligent but had drifted away due to the lack of a challenge in his lower level English class, compounded by his heavy drug use. Johnson was met with great resistance, but was ultimately successful in moving him up to ACL English, which is where I met him. I think it was his teacher's belief in him that turned him into the happy, clean, and motivated kid I knew. He's also the best drummer I've seen.

When Johnson was approached by Hollywood Pictures to make a movie out of her book, she saw it as an opportunity to make people think. She wanted young viewers to realize that they can choose to succeed, and she wanted to renew older viewer's faith in young people. In interviews she said she felt that ultimately, these messages were conveyed, so she chose not to complain too much about the film's inaccuracies and misconstrued ideas. After seeing the movie and reading the book, I don't think I would have been so gracious if it were my book. The movie simply does not capture the uniqueness and power of the book. The nature of the film medium, I suppose, is limited in its ability to explain as accurately the small details that truly define the beauty and significance of a story like this. There is simply too much to say in too short of a time.

Screenwriters' make stories out of images, and although a picture might be worth a thousand words, I don't think that exchange rate applies in Hollywood.

Johnson felt that the filmmakers and the movie's star, Michelle Pfeiffer, had their hearts in the right place at the beginning, wanting to tell the story accurately. As technical adviser on the film, Johnson told them the way it was, but in the end, that didn't stop them from creating their own reality, playing up aspects that might seem controversial and completely fabricating others (though a couple of her students had been shot, none of them were ever killed). Twice divorced and happily single, Johnson was especially frustrated that they had her with a daughter and a boyfriend in the original script. Another major variation on reality was the depiction of her Academy class as being almost entirely students of color, when in fact one third of her class was white. Johnson told syndicated columnist Donna Britt that the filmmakers "were in love with the idea of Michelle being White and the kids not... They have this notion that school is only a problem for poor minority kids...". In a review by People magazine, they note "the movie's white-lady-to-the-rescue premise seems both dated and patronizing. Pfeiffer, at one point, uses Bob Dylan lyrics to get her students excited about poetry. Uh, wouldn't Snoop Doggy Dogg be more like it?" Ironically, not only did Johnson use rap lyrics and not Dylan, but her being white was never really an issue with her students or (as in the movie) with their parents. Johnson attributes this to the filmmakers' ignorance. She tells Britt "Most people in the movie industry, their perception of non-Whites is what they get from movies. They think they're breaking the stereotype, but are creating another." Unfortunately, most of the kids in Belmont also get their perceptions of non-Whites from Hollywood before they enter Carlmont High School.

"Dangerous Minds" is playing at the Capital Mall, and the book is available at TESC Bookstore and Barnes and Noble. (\$4.99, St. Martin's Press) Oh, yeah, and the soundtrack, which happens to be the #1 album in the country, is available at mainstream record stores everywhere.

**APOLLOS**  
pizza & pasta

Fri 11-12  
Sat 11-11  
Sun-Thurs 11-10

2010 Harrison Ave NW  
(next to value village)

Beer & Wine  
Take Out  
751-7444

**Take the whole crowd to the Washtub Laundromat!**

Come visit the Washtub Laundromat. And while you're there, you might as well do your laundry. After all, we're the only self-service laundromat on the westside!

We also feature drop-off/dry cleaning. And "down" sleeping bags? No problem!

Located on 2103 Harrison Ave, across from the new Value Village...943-9714.

Finally...a reason to wash your clothes!

Morrissey stops worrying and does his best

by Jennifer Koogler

Strange things are a foot on the new Morrissey CD. It is bad enough that I didn't find out about it's September 12th release date the week before; me, one of the last people not afraid to declare their affections for Moz. Right then, I should have known something was wrong. And yes, all is not well within the realm of this engineered enigma, Morrissey's sixth (I think) solo effort.

This album is kind of like a sandwich. Six songs of the usual Morrissey/Alain Whyte style that's been brewing since *Your Arsenal* are placed between two marathon melodies (ten and eleven minutes, respectively), that are mostly instrumental clouds of fog that sound like his studio musicians kept when Moz left to go to the bathroom because they were afraid to stop until he came back and told them to. The first song "The Teachers are Afraid of the Pupils" starts out like the *Twin Peaks* theme meets the strings in "Gangsta's Paradise". Then there is the drum introduction to "The Operation" that makes you think someone is trying out their new kit downstairs. My guess is that Morrissey's demons are catching up with him; he's lost some good friends in the last year, including Mick Ronson, producer of *Arsenal* and the

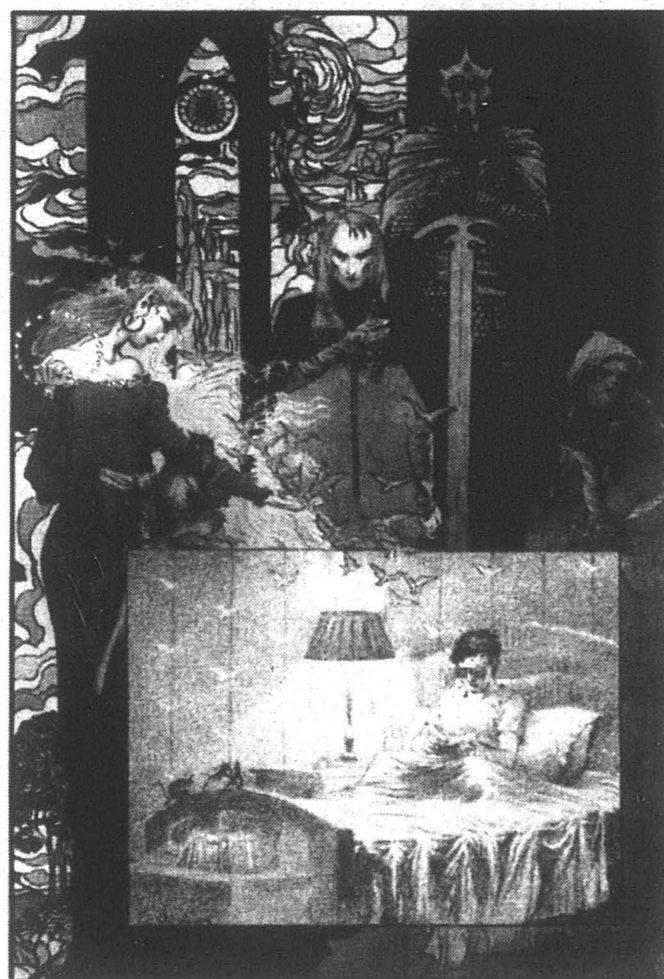
bands, let me state that Smile is not just another Pearl Jam soundalike. Their apparent musical proficiency coupled with "the engineering genius of Eric Garten" (an actual press release quote) who's worked with the Meat Puppets and other assorted bands give Smile an edge (not a cutting edge) over others drifting in the club scene waiting to be fished out by David Geffen.

When he does show up, he delivers the essential melancholy with somewhat grinding style. Lines such as "there's too many people planning your downfall, when your spirit's on trial, these nights can be frightening" are perfect for those rainy Saturday nights when you are crying too hard to concentrate on the road. Then, out of nowhere, comes "Do Your Best and Don't Worry," an actual uplifting song. I think that there might be sarcasm involved, but it doesn't sound like it. It may take me awhile to remember that I can go to him for encouragement instead of justification for my anguish. There is also the traditional stick-out-your-tongue-at-the-object-of-your-hatred, "The Operation," which starts out "You fight with your right hand and caress with your left hand, everyone I know is sick to death of you," which adds another tune to my collection of songs to direct at the evil people in my life. Morrissey, however wavering his strength might be, still reigns the world of faded black and grey. Buy this album and use your Smiths decoder ring to figure out what he's talking about.

**MORRISSEY**  
*Southpaw Grammer*

playing to him for encouragement instead of justification for my anguish. There is also the traditional stick-out-your-tongue-at-the-object-of-your-hatred, "The Operation," which starts out "You fight with your right hand and caress with your left hand, everyone I know is sick to death of you," which adds another tune to my collection of songs to direct at the evil people in my life. Morrissey, however wavering his strength might be, still reigns the world of faded black and grey. Buy this album and use your Smiths decoder ring to figure out what he's talking about.

**MAGIC IS ALL AROUND IF YOU HAVE EYES TO SEE.**



A new, ongoing monthly series featuring Timothy Hunter.

**the BOOKS of MAGIC**

CHOOSE TO BELIEVE.

JOHN NEY RIEBER ▼ GARY AMARO ▼ PETER GROSS  
COVERS BY CHARLES VESS



Vertigo and THE BOOKS OF MAGIC are trademarks of DC Comics ©1994. All Rights Reserved.

AVAILABLE AT:

**Danger Room Comics**

201 4th Avenue  
Phone: 705-3050

Seven pushes the limits of its genre

By Bryan Frankenseuss Theiss

Movies about brutal murder sprees are not exactly new territory. From the anti-hero horror films of Vincent Price and Boris Karloff, to *A Nightmare On Elm Street* to the surprise best picture *Silence of the Lambs*, it's pretty much all been done. The horror films that really make people pay attention tend to be the ones that push the limits of dementia and brutality to new heights (*Psycho*, *The Texas Chainsaw Massacre*). The new film *Seven* tries a different approach. While the special effects and methods of killing are particularly gruesome, there is very little onscreen violence. Instead of aiming for screams and fast beating hearts, the filmmakers seem to be aiming for the most intensely dismal ambience possible.

Modern serial killer films usually fit into one of two categories: exploitative *Friday the 13th* style slasher flicks that center around the killer, and upscale *Silence of the Lambs* style films that center around the

people who try to catch the killer. *Seven* definitely fits into the latter category, and yet it has such a unique look and feel that it seems fresh. The arty, disorienting opening credit sequence set to a disjointed industrial sound collage is a warning that this is not your average Hollywood fare.

Bradd Pitt plays Mills, a small town homicide detective who has moved to the big city to replace the soon to retire Somerset (Morgan Freeman). Twenty minutes after arriving in town, Mills finds himself investigating a particularly brutal murder.

**These characters seem to live in the bleakest city on earth. The streets are dirty, the apartments are dimly lit, and the gritty grey sky pours rain almost non-stop.**

In the next few days more victims turn up, appearing to fit a pattern based around the seven deadly sins. Expecting a septet of murders, Somerset spends his last seven days on the job helping Mills track down the killer.

The film's biggest strength is definitely atmosphere. These characters seem to live in the bleakest city on earth.

The streets are dirty, the apartments are dimly lit, and the gritty grey sky pours rain almost non-stop. Most of the crime scene investigations involve flashlights, and an occasional crawling insect does a lot to set the mood. The setting is so well rendered you can practically smell it. This shouldn't be surprising considering that director David Fincher's only previous feature film was the very unpopular *Alien 3*. For all its failures in pacing and character development, it was a good example of Fincher's skills for setting a mood and pleasing the eye.

Really, *Seven* is like *Alien 3* with a better script. Both films choose not to let the viewer know much about the victims, but in *Seven* it's not necessary. The audience never finds out about a murder until the main characters do, so the killer maintains the mystery that the aliens lacked. Instead of repeatedly seeing people get killed and trying to find the alien that we know is the killer, we follow the trail of bodies and hope it leads us somewhere.

The disturbing special effects add a lot to the gloomy mood of the film as well. There are no hokey looking rubber props with fake blood splattered on them. The unusually realistic look stands a chance of disturbing even the most hardened horror fan. If you don't have a strong stomach you might want to consider avoiding this one.

Pitt and Freeman, of course, deliver good performances and both of their characters are better developed than one might expect. The relationship between the two is interesting, especially since it avoids a predictable clash between Mill's youthful sloppiness and Somerset's experience and wisdom.

The killer, whose twisted Catholic philosophy is bound to make people of all denominations uncomfortable, is one of the most convincingly demented screen villains in recent cinema history. He definitely gives *Silence of the Lambs'* Hannibal Lecter a run for the money in the creepy department. The writer really seems to have put himself in the mind of a psychopath, coming up with some of the most appalling ideas I've seen on film.

All of this would have fallen flat on its face if, when the killer was finally revealed, he turned out to not be very scary. But the phenomenal performance that dominates the last act of the film guarantees this will be a memorable villain. The excellent actor who plays the killer to deranged perfection has not been revealed in the advertisements, so I won't give away the surprise.

The one major flaw in the film is that a lot of the surprise twists can be spotted a mile away. Strangely, this doesn't ruin the film and in some cases adds to the tension.

If you would just as soon be disturbed as entertained, *Seven* is for you. It is a striking and original film that will likely linger with you long after seeing it. That may not be a good thing, but it's certainly what the filmmakers intended.

Smile risks alternative rock saturation with Maquee

by Jennifer Koogler

After my premiere spin of Smile's latest release, I tried in vain to come up with the name of the band that they reminded me of. Several tours of the old record collection and a couple scans of the press kit later, I decided that Smile sounds like what would happen if the guys in Weezer met the guys in Soundgarden and went to the Pink Floyd Laser Fantasy show together. On the way home they decided to form a band. This lame comparison scratches the surface of an entertaining album perfect for cruising the surface streets of the Greater Thurston County area on partly cloudy days.

Not as gloomy as the Presidents, yet not as spaced (in a good way) as Pink Floyd, Smile rests in that large abyss of bands who are on the verge of riding the next melt into alternative rock saturation. She screams "buzz bin"; I can just see poor Mike (singing dude, guitar), Scott (drummer extraordinaire) and Aaron (bass, dub) smiling (no pun intended) fakely as Kennedy introduces yet another Silverchair video. But before you run screaming into the post-apocalyptic nightmare of over-exposed indie rock

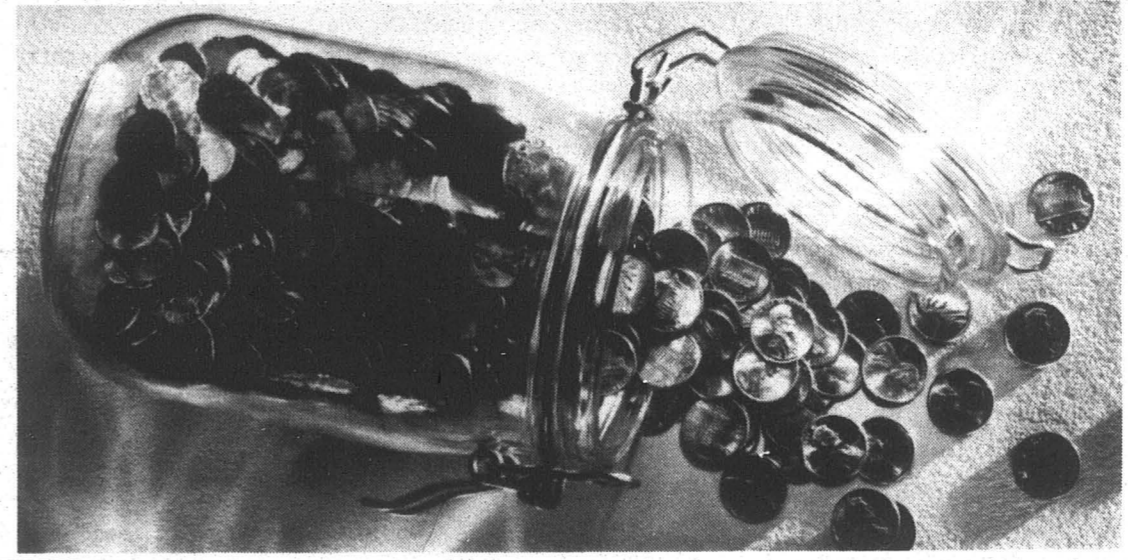
bands, let me state that Smile is not just another Pearl Jam soundalike. Their apparent musical proficiency coupled with "the engineering genius of Eric Garten" (an actual press release quote) who's worked with the Meat Puppets and other assorted bands give Smile an edge (not a cutting edge) over others drifting in the club scene waiting to be fished out by David Geffen.

*Maquee* starts out with this sentiment in the mosh-friendly "Rock Anthem For the Retarded Teenage Hipster," which proclaims over guitar drenched drums, "The fact we're different makes us all the same, and yet we still insist on playing these stupid games," words which

send Tori Spelling's baby barrettes into orbit. "Staring at the Sun" and "Wallflower" are driving little ditties that will make even the most hardcore butt rocker take notice. It may sound a bit dry and overdone to cynics, but Mike and the boys throw in enough curves, like "Picture Made Past," to make *Maquee* a crowd pleaser. Let's hope that if they ever do find themselves on *Alternative Nation*, they make fun of Kennedy to her face.



PRINCIPLES of SOUND RETIREMENT INVESTING



**EVERYONE WILL GIVE YOU THEIR TWO CENTS WORTH, BUT WILL THAT BE ENOUGH TO RETIRE ON?**

Today there seems to be an investment expert or financial advisor almost everywhere you turn. But just how qualified are all these experts? Peace of mind about your future comes from solid planning. From investments and services designed and managed with your needs and retirement security specifically in mind. The kind of investments and services TIAA-CREF has been providing for more than 75 years.

annuity accounts. And we're nonprofit, so our expense charges are among the lowest in the insurance and mutual fund industries. That means more of your money is where it should be—working for you.

TIAA-CREF is now the largest private pension system in the world, based on assets under management—managing more than \$145 billion in assets for more than one and a half million people throughout the nation.

**WE'LL HELP YOU BUILD A REWARDING RETIREMENT.**

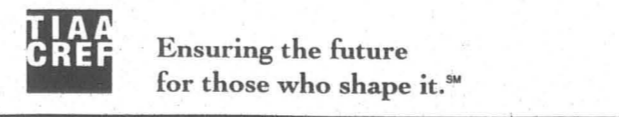
Our counselors are trained retirement professionals who have only you and your future in mind. So you're treated as the unique person you are, with special needs and concerns about retirement. And that makes for an understanding, comfortable relationship.

With TIAA-CREF, you have plenty of choice and flexibility in building your retirement nest egg—from TIAA's guaranteed traditional annuity to the investment opportunities of CREF's seven variable

**TIAA-CREF: THE CHOICE THAT MAKES SENSE.**

It's tough to wade through all the "advice" to find a reliable pension plan provider. But as a member of the education and research community, your best choice is simple: TIAA-CREF. Because when it comes to helping you prepare for retirement, our annuities will add up to more than spare change.

For more information about how TIAA-CREF can help you prepare for the future, call our Enrollment Hotline at 1 800 842-2888.



Ensuring the future for those who shape it.™



# Arts & Entertainment

## New release by former Liquid Jesus members

by Jimi Cunningham

From the ashes of acclaimed LA band Liquid Jesus rises Squash and it's debut disc *Compost*.

Liquid Jesus' brew served up elements of 70's psychedelic groove delivered with a sonic kick. Jesus' lumberjack handlers Todd Rignone and Scott Tracey bring us more groovy bud rock cooked up Cajun style, with the addition of Louisiana born bass handler Carl DuFrene and kit basher Brock Avery in the form of Squash. The band describes it's sound as "T-Rex meets Parliament-Funkadelic."

The styles sway and flow in a schizophrenic ocean of sound. This identity crisis makes sense considering the band has had guest trap slappers as

as Stephen (Jane's Addiction, Infectious

Grooves and Porno For Pyros) and John Molo (Bruce Hornsby band) and band members contributing their talents elsewhere. Most notably Brock touring with Wayne Kramer (MC5 godhead) and Rignone and Avery pitching in on Mike Watt's most excellent solo offering *Ball-Hog or Tugboat?* (check out Rignone's stellar guitar work on "Tell 'Em Boy").

Songs like the swirly slippery funk of "Spring Garden" and the numbing to rattling tones of "The Devil Song" and other worthy cuts "Dig" and "Easy to Kill" make this disc a must have.

Rignone's blissful stage presence also puts this band into "priority must see live" status. The band will be appearing throughout Seattle Oct. 1-7.

Powerfully researched and written by Nelson, the Psychic Wizard

## Take Horoscopes

Designed by Mike Harris and Greg Hessel



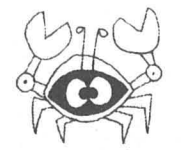
**ARIES** (March 21-April 19) Everybody you know knows how cool you are but you're not yet James Brown. Be James Brown. Now you're eternally cool. Now you're the Minister of Funk.



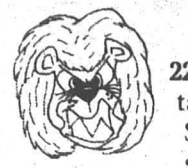
**TAURUS** (April 20-May 20) Take up something you haven't done for a long time, like sex or the yo-yo.



**GEMINI** (May 21-June 21) Your mantra for now is "Coffee is God." If you chant it enough you will meet neat people, and little weasels.



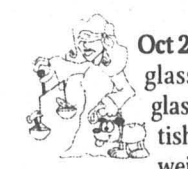
**CANCER** (June 22-July 22) Your sign is the crab. However, you are not a crab. Introduce yourself to new people this week and say, "I am a crab, but I am not crabby." Don't feel bad if they just laugh at you.



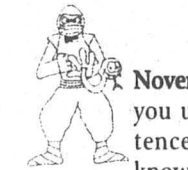
**LEO** (July 23-August 22) Have you really been taking your vitamins? Stay away from giant, sucking, jet engines.



**VIRGO** (August 23-September 22) Have you ever locked yourself in your room for extended periods of time and eaten nothing but Nilla wafers and Circus Peanuts and drank nothing but Pepsi? Well, now is a good time to start.



**LIBRA** (September 23-October 23) Happy b-day! You like glasses, you know you like glasses, you have a glasses fetish. Nobody thinks you're weird, just eccentric. Really. Have you ever mailed a banana? Well it doesn't work. You should mail a shoe to a friend. It'll get there.



**SCORPIO** (October 24-November 21) "dru-lon-ue" Can you use that word in a sentence? You should. Do you know how impressed people are when you serve them dinner on a record? I didn't think so. So maybe these horoscopes are a little cheesed. Oh well.



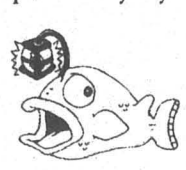
**SAGITTARIUS** (November 22-December 21) Lick your neighbor's window clean and they will never forget you. I promise. Take a ride down the Golden Strip sometime soon... Cheese+Prozac+Good Friends=Memorable evenings in front of the fire. Remember this.



**CAPRICORN** (December 22-January 19) Stay away from sharp flying projectiles this week, and you'll be all right.



**AQUARIUS** (January 20-February 18) A Libra needs to take you shopping for glasses. Wear all your polyester this week. There's nothing shameful about it. We're all pretty crusty deep down anyway.



**PISCES** (February 19-March 20) Buy and sell waterfront property. That's it! That's all you have to do! Really!

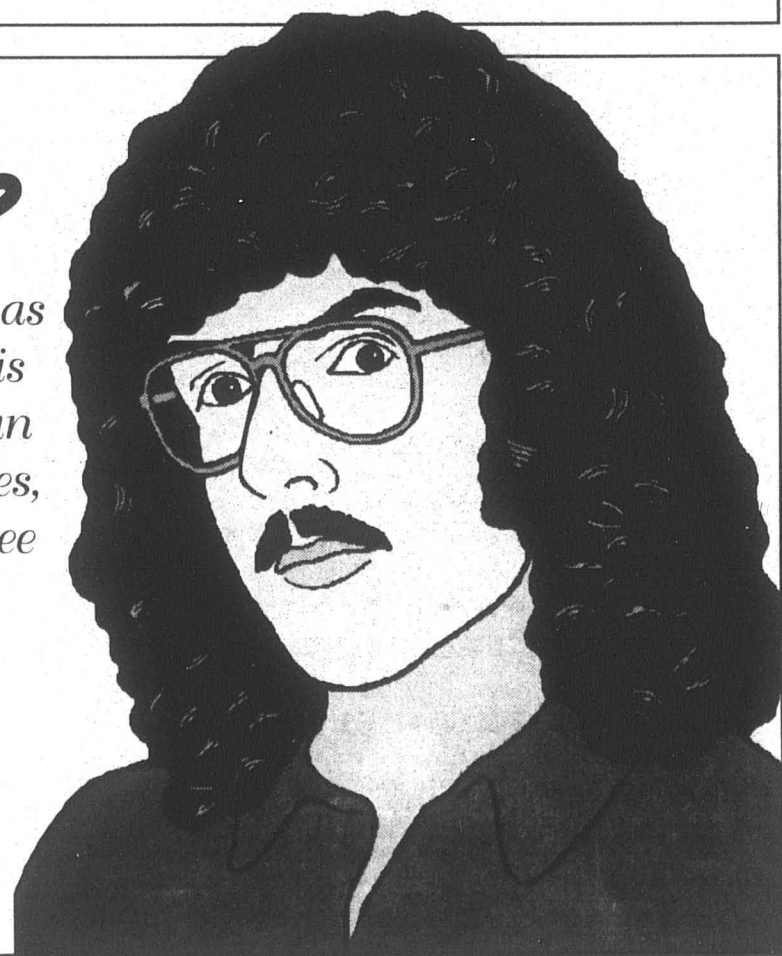
## WOULD YOU LIKE TO WRITE FOR THE CPJ A&E SECTION?

We would like to make the content of the CPJ as diverse as possible, but for that we need your help. No experience is required. All you need is a passion for something and an urge to write about it. We're looking for reviews of movies, music, books, performances, and more. If you want to see your kind of entertainment represented in these pages, come make it happen.

FOR MORE INFORMATION, STOP BY CAB 316 OR CALL X6213.

WEEKLY STORY MEETINGS ARE MONDAYS AT 5PM.

\*Weird Al\* Yankovic does not endorse this advertisement. No endorsement should be implied.



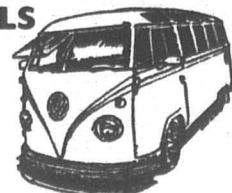
## BACK ALLEY MOTORSPORTS VOLKSWAGEN

SALES • SERVICE • RESTORATION

ALL MAKES & MODELS

OPEN MONDAY - FRIDAY 8-6 (360) 736-1224

1024 ROOSEVELT AVE., CENTRALIA



Books & Tools for Witchcraft and Paganism

Art, Jewelry, Tarot Cards, Candles, Gifts, Herbs, Oils, Incense, Books & much, much more!

608 Columbia St. S.W. Olympia, WA. 98501 Ph# (360) 352-4349

ANCIENT EUROPEAN GIFTS FOLKLORE, AND SUPPLIES

Open 11 a.m. to 6 p.m. Monday thru Saturday

Show Your TESC ID for 10% off total purchase. Offer ends 12/31/95.



# CALENDAR

SEPTEMBER TWENTY-EIGHTH THROUGH OCTOBER FOURTH, 1995

by Andy Schoenstein

## THURSDAY, SEPT. 28

Evergreen Queer Alliance presents Evening at the Drive-In. Featuring SUBURBIA and the original 1978 film GREASE. Meet at 6pm at Red Square Loop to get or give a ride in carpool. Movies are at the Skyline Drive-In Theater in Shelton. Bring \$ for movie, blankets, chairs, etc. Expect to be back late. Suggested attire is 50's/70's - not required. Call 866-6000 x6544 for more info.

Go see Greener alum-run Harlequin Productions' "The Baltimore Waltz" A Bedtime Comedy by Paula Vogel that takes on the misconceptions of the AIDS virus. Shows at 8pm Sept. 28, 29, 30 and Oct. 4, as well as a 2pm show on Sunday, Oct. 1. At the Washington Center's Stage II. Tickets are \$12-\$16. For tickets and info, call 753-8586.

Environmental Resource Center first meeting @ 5:30, 3rd floor of the CAB.

## FRIDAY, SEPT. 29

Olympia Arts Walk. If you've never been to Arts Walk, you're missing out on the transformation of downtown into a cultural mecca. It's also a good chance to check out the local population. They come out of the woodwork for this one. Just about every business downtown has an art opening of some sort, and local performers strut their stuff. Highlights include a parking lot show @ 6 with Sage, GenePool Lifeguard, and Slow Children; poetry readings at Four Seasons Bookstore at 7, and a celebration of The Washington Center for the Performing Arts' 10th Anniversary on an outdoor stage, featuring lots of cool performances and free cake! Arts Walk starts around 5pm.

BIRD WALK! Rise and shine and join fellow bird lovers at Evergreen. Meet in front of the CAB @ 7am. Got binoculars? Bring 'em. Call Drew at 753-7067 for further information.

BLACK UHUR!! @ TESC College Recreation Center, 9pm. Tickets: \$14 general, \$10 student, \$15 at door. Tickets are available at TESC Bookstore, Rainy Day Records, and Tee's Me T-shirts.

Capitol Theater Backstage: DIAMOND FIST WERNY, HEEND, DELUSIONS OF GRANDEUR. 9pm, \$4. 206 E. 5th Ave.

"Micheal Yenetti's an Evening with George Gershwin" 8pm, Friday and Saturday 2 Centralia High School classatorium, 813 Eshom Rd., Centralia. \$8 general, \$7 students. 748-0291.

## SATURDAY, SEPT. 30

Bill Lenker @ The Fishbowl Pub, 9pm, acoustic, NO COVER!

JAWBREAKER, Capitol Theatre, 206 E. Fifth Ave., call 754-5378 for mor info!!!!

If you got a lot of dough, and you love Motown, don't miss The Temptations @ 7pm at The Washington Center, 512 Washington St. \$30-\$100. 753-8586.

## SUNDAY, OCT. 1ST

TESC Open Mic! At the Housing Community Center. Sign up @ 7, play @ 8. Do your thing or watch as your contemporaries do.

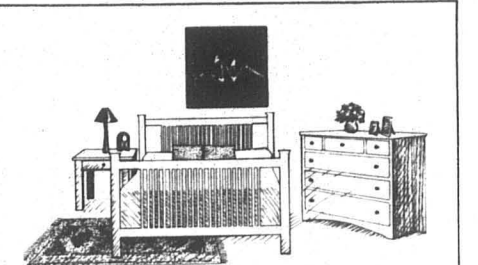
Be there for Olympia musician Andy Crow's Wurlitzer Organ Debut Concert at The Washington Center at 2pm. This guy put ten years of his own time into restoring this organ, so the least you could do is be there for his shining moment. \$10-\$14.

2pm performance of "The Baltimore Waltz" at The Washington Center's stage II (see listing for Thurs. for more info.)

## MONDAY, OCT. 2

TESC A.A. meeting, 4:30-6 in LIB 2116.

VOI Drop off info for your event in the calendar box at the CPJ, and watch it magically appear in the next issue! VOI



## THOUSAND CRANES FUTONS AND FURNITURE

Fine, locally crafted furniture... planet-friendly design solutions... certified organic futons...

10% STUDENT DISCOUNT Sept. 15 - Oct. 15

416 S. CAPITOL WAY • OLYMPIA, WA OPEN 7 DAYS A WEEK • (360) 357-8464

## Rainy Day RECORDS



FANTASTIC SELECTION OF RECORDS, TAPES & COMPACT DISCS & INDEPENDENT RELEASES

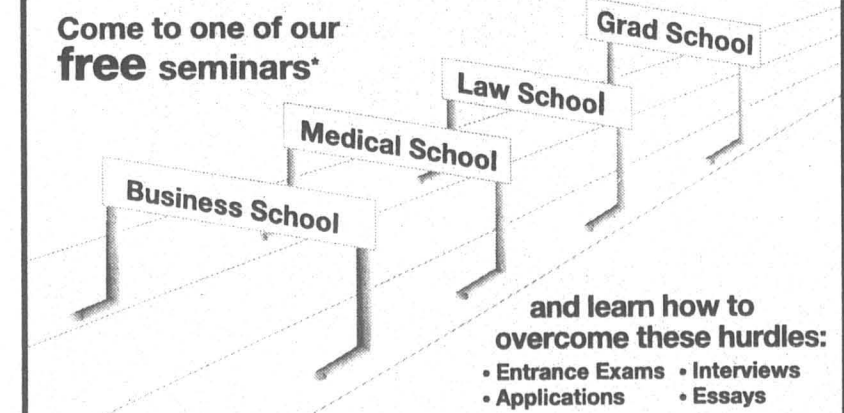
SPECIAL ORDERS WELCOME



NEW EXTENDED HOURS! BEGINNING OCT. 1ST MON. - WED. 10AM-8PM THUR. - SAT 10AM-9PM SUN. 12AM-5PM

357-4755 WESTSIDE CENTER DAVISON & HARRISON

## get the Inside Track on admissions



and learn how to overcome these hurdles: Entrance Exams, Interviews, Applications, Essays

Space is limited! Call today to reserve your seat 1-800-KAP-TEST KAPLAN

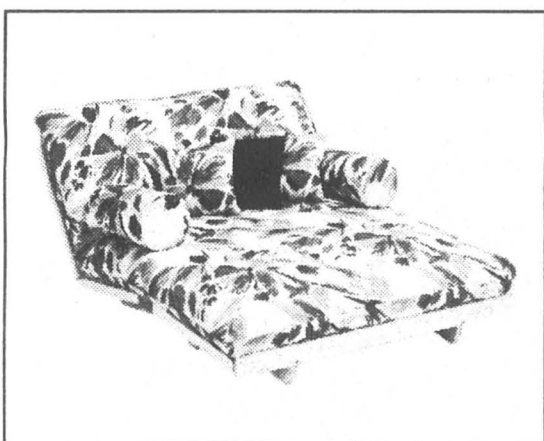
## Classifieds

<p><b>Help Wanted</b></p> <ul style="list-style-type: none"> <li>FUNDRAISING - Fall... Raise \$500 in 5 days... Clubs, Motivated Individuals... No financial obligation... 1982 ext. 33.</li> <li>STUDENTS NEEDED... are now hiring... Forestry work... firefighters... benefits + bonuses! Call 206-545-4804 ext. N60911.</li> <li>ATTENTION ALL STUDENTS - Over \$6 Billion in private sector grants &amp; scholarships is now available. All students are eligible. Let us help. For more info, call 1-800-263-6295 ext. F60911.</li> <li>HIRING: Evergreen Queer Alliance needs to fill two coordinator positions. Apply at S&amp;A office, CAB 3rd floor. Appx. due Oct. 6.</li> </ul>	<p><b>For Sale</b></p> <ul style="list-style-type: none"> <li>1966 Volkswagen Camper - gas... pop-top, recent paint, runs and... great. \$3000 or best offer. Call Zak at 206-272-8952.</li> <li>CHEAP AIRLINE TICKET - One-way ticket to Chicago or Milwaukee for only \$150 or best offer. Travel before Feb. 29. Call 866-8239.</li> </ul>
<p><b>Misc.</b></p> <ul style="list-style-type: none"> <li>ERIC TOOTH IS A REALLY GREAT GUY.</li> </ul>	<p><b>Personal</b></p> <ul style="list-style-type: none"> <li>Could you see me on the... who are you from... map. It's my... home... too. Call me and let's speak... Swedish. Max 958-1107</li> </ul>

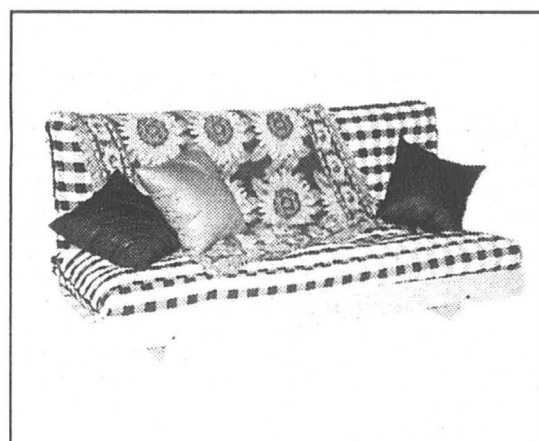
# STUDENT SPECIAL!

YOUR CHOICE...

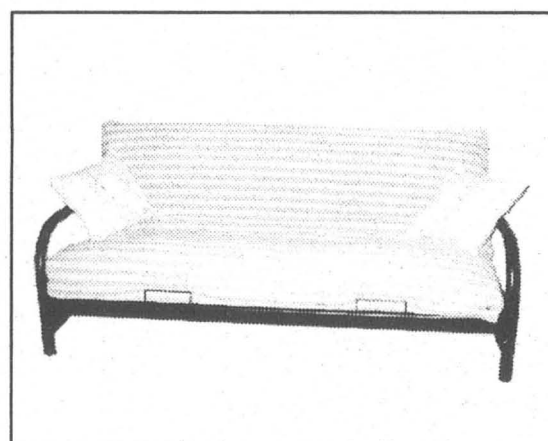
## 3 FRAMES - \$99 ea.



Studio (Double)



Samurai (Double)



Aztec (Double)

LAY AWAY PLANS

STUDENT DISCOUNTS

SPECIAL FINANCING



**FUTON**  
OF NORTH AMERICA  
**THE LOW PRICE FUTON LEADER**

**OLYMPIA**

ACROSS FROM TOYS 'R' US

**943-7486**

Constitution of the State of Washington

Article 1 § 5 FREEDOM OF SPEECH

Every person may freely speak, write and publish on all subjects, being responsible for the abuse of that right.

Congress shall make no law respecting an establishment of religion,

prohibiting the free exercise thereof; or abridging the free press; or the right of the people peaceably to assemble, and to petition the government for a redress of grievances.

## Letters & Opinion

### Editorial

## Guns and skateboards: why can't we have both?

by Reynor Padilla

### Give Security Guns

Up until last week I thought the idea of arming campus security was pretty ridiculous. Security says that they feel like they would be able to do their jobs more safely with guns. In my mind guns and safety didn't exactly go hand in hand.

Besides, I thought, who does security really have to defend themselves from on the relatively serene Evergreen campus? But after the last Wednesday's assault on Public Safety Officer Kirk Talmadge I'm not so sure.

Talmadge was literally put in the hospital defending our cars in F-Lot. He was hit three times and knocked down.

He was okay, and was released from the hospital the same day. But do you think he would have been assaulted had he been armed?

F-Lot has become a dangerous place for our cars in the last year or so, and now it's becoming a dangerous place for people. Car burglaries cost student Drew Kerslake \$3000 in repairs last year, and he was so infuriated that he became a vigilante F-Lot guardian. Kerslake was injured last spring trying to protect the virtues of our cars.

Of course people rip off stereos from Evergreen students. They know they're not going to get shot, or even threatened.

I'm not saying that security should shoot anyone, or that they even will. But they have to be able to defend our property and more importantly, protect themselves. They have to be able to do their jobs.

### Give Us Back Skateboarding

Last week I was skating around campus, headed toward the Community Center. I was excited. After living off-campus for a year I would finally be able to skate at my favorite spot in Olympia on a regular basis. But a mountain bike security guard told me I couldn't skate there and I laughed. I thought he was joking. People have always been able to skate at Evergreen. Always. It's been one of the best things about the school for me, giving me a stress release and a form of fitness that I truly enjoy.

Sadly the security guy was not joking. Skateboarding is now prohibited at the Community Center. And from what I have heard from my fellow skateboarders, it's prohibited around the rest of the campus too. You can skate to and from class, but you can no longer stop and skate at one location for an extended period of time.

I find this to be totally against the ideals that Evergreen tries to uphold. Skateboarding, besides being a fun activity, is a healthy, creative, and relatively low-risk sport (there is a higher percentage of serious injuries incurred by tennis players than skateboarders every year). It's a sport for the individual, yet it takes place in a highly charged, exciting, group atmosphere.

I call for a public forum to re-open the topic of skateboarding on campus. I doubt that an administration so committed to community involvement would be opposed to the idea. In fact Art Costantino, the Vice-President for Student Affairs hopes to "promote a well-rounded person, body and mind" with Evergreen's new basketball and tennis teams. Why on Earth would they oppose allowing skaters the same opportunity?

Who does security really have to defend themselves from on the relatively serene Evergreen campus?

But after the last Wednesday's assault on Public Safety Officer Kirk

Talmadge I'm not so sure.

## Summer Session: A rip-off?

by Neil Gillespie

Let the buyer beware, is that clear enough? I don't know which is worse, the significant tuition increase or the paucity of services and standards. I've discussed the situation with summer school Academic Dean John Aikin Cushing, who basically blamed the situation on funding shortfalls from the state, blah, blah, blah...yawn.

Full time resident summer school tuition is \$1,206 (16 credits), a sharp increase from the \$752 charged in the spring. While the \$454 increase can take a real bite out of a student's budget, it becomes a double whammy considering the loss of services and standards. In the summer, Evergreen mutates into an institution on the verge of rigor mortis. You can't even get an issue of the CPJ, even though students still pay the \$100 activity fee. In fact, many student groups remain dormant during the summer.

The Health and Counseling Center is also closed during the summer; please hold all medical problems and personal crises until fall. When I posed this concern to Dean Cushing, I was disappointed with his response. He said that while the Health and Counseling Center was indeed closed, I wasn't charged the \$35 health services fee required during the regular school year. But wait, wasn't I charged \$454 more in tuition than the spring quarter, when the \$752 tuition included the health service fee? Dean Cushing's doublespeak is palpable. By the way, how much medical care can a student purchase with \$35? Are academic deans that far out of touch with a student's reality? Is this a precursor to the Ire of Newt health care plan?

I have taken the time and made the effort to inform Greeners about this issue because I believe the situation can improve; if students take the lead, the administration

might follow. An attitude adjustment among the power structure is as important to change as additional funding. If the situation doesn't improve, you've been warned. Let's be honest, the summer break is too precious to waste on expensive classes at a college offering significantly reduced levels of services and standards.

Of the three classes I took this summer, two were bummers. In one case, the college hired a hack professor from New York to teach *Society and Utopia: Reconsiderations*. Far from being a utopia, this mercenary couldn't even make it to class. After filing the necessary forms, I was able to drop with a refund, but who needs the hassle? Why was this professor hired in the first place? Does anyone give a fig? Contrary to proclamations in the Evergreen *Summer Times*, I did not find faculty more available during the summer. The other dud class I suffered this summer is currently being investigated by the Provost.

Other significant cutbacks confronting summer Greeners are curtailed hours at both the library and the computer center. Both close on weekends and the computer center is never open past 5:00 PM. I'm not the only student who paid \$10 per hour to rent a computer at Kinko's in order to complete an assignment. Considering the summer tuition rates, this is outrageous, and another example of poor value.

While the college cries poverty, some summer policies are suspect. Why do faculty receive lucrative commissions to teach summer classes, when they receive regular salaries during the year? Why do some sources say that summer school is actually a cash cow for the college? I'd like to see the financial statements for clarification on these issues. Why are students the ones to suffer under the current arrangement?

## A message from Career Development

by Stacia Lewis

Welcome new students! Welcome back, returning students! The Career Development staff is looking forward to another busy year.

For those of you who have never visited our center, let me tell you about our services. We are located in the library building, room 1407. Our office provides job search counseling, information on graduate schools, as well as career counseling, interest assessments and groups to assist you in determining your career path. We have job listings, resume assistance and can perform mock interviews. Our graduate school information includes application assistance and can perform mock interviews. Our graduate school information includes application assistance, testing preparation resources and feedback on graduate school essays. If you want to plan your Evergreen career, please come visit us. It's never too soon to do some career/life exploration and planning.

We are open 8 am to 6 pm every weekday except Friday, when we close at 5 pm. We have drop-in hours on Monday and Wednesday mornings for fifteen minute sessions. Students who have never been to our center probably will be best served by starting with an intake session which provides an overview of the

career planning model and a tour of the center. Intakes are offered Mondays at 4 pm, Tuesdays at 2 pm, Wednesdays at 3 pm and Thursdays at 9 pm. Please call our office for information or to sign up at x6193.

Students who are interested in the process of a job search may want to join Job Club which meets every Tuesday at 1 pm in Library 1406a. This is a successful, task-oriented group which provides support and concrete job search skills. Sign-ups are not necessary.

Students who are not sure about their fields of interest or how their strengths relate to different jobs may wish to join the Discovery group, Wednesday from 2 to 4 pm. This group meets for three consecutive weeks and helps with self-assessment in areas such as interests, skills, values and personality characteristics. The next Discovery series will begin October 11. Please call to sign up.

On Wednesday, October 25, from 10:30 am to 3:30 pm we will have our Fourth Annual Combined Graduate School Fair. Representatives from a variety of graduate programs will be present to answer your questions. Keep an eye out for updates on specific participating schools or call our office at x6193.

Again, welcome to Evergreen's 1995-96 academic year. We look forward to working with you.

### How to Respond

Our Letters and Opinion Pages exist to encourage robust public debate. Letters and Opinion submissions represent the sole opinions of the authors and are not endorsed by the CPJ staff.

• Letters must be 450 words or less

• Opinion articles must be 600 words or less.

Please save in WordPerfect and bring your submission to CAB 316 on disk. Call us at 866-6000 x6213 if you have any questions

**CPJ**

COOPER POINT JOURNAL

CAB 316, The Evergreen State College, Olympia, Washington 98505

Editorial  
866-6000 / x6213

Business  
866-6000 / x6054

Advertising  
866-6000 / x6054

Subscriptions  
866-6000 / x6054

Internet  
cpj@elwha.  
evergreen.edu

Weekly Story Meetings  
Mondays at  
5:00 pm in CAB 316

### News

Editor: Reynor Padilla  
Managing Editor: Dawn Hanson  
Assistant Editor: Jimi

Cunningham  
Editor: Naomi Ishisaka  
Assistant Editor: Joie Kistler  
Assistant Editor: Bryan Theiss

Interim Comics Editor: Sal Occhino  
Interim See-Page Editor: Jenny Jenkins  
Calendar Editor: Andy Schoenlein

Security Blotter Editor: Matthew Kweskin  
Editor: Oscar Johnson, Cedrus Fox-Dobbs, Liv Lindenburgh, Nolan Lattyack, Jennifer Krogler

Photographers: Jeremy Kershaw, Mark Santurbane, Scott Tom, Mike Yadrick

Business  
Managing Editor: Graham White  
Assistant Editor: Kate Wray  
Assistant Editor: Jennifer

Shears  
Advertising Designers: Carson Stregle-Flora, Nate Mahoney  
Advisor: Dianne Conrad

The Cooper Point Journal is directed, staffed, written, edited and distributed by the students enrolled at The Evergreen State College, who are solely responsible and liable for the production and content of the newspaper. No agent of the college may infringe upon the press freedom of the Cooper Point Journal or its student staff.

Evergreen's members live under a special set of rights and responsibilities, foremost among which is that of enjoying the freedom to explore ideas and to discuss their explorations in both speech and print. Both institutional and individual censorship are at variance with this basic freedom.

Submissions are due Monday at Noon prior to publication, and are preferably received on 3.5" diskette in either WordPerfect or Microsoft Word formats. E-mail submissions are now also acceptable. All submissions must have the author's real name and valid telephone number.