

Cooper Point Journal

Volume 28 • Number 4

October 16, 1997

The Evergreen State College

© Cooper Point Journal 1997

Former cop appeals firing

by Leigh Cullen
Managing editor

Larry Savage begins on Monday the first step in a process to get back his job as Evergreen police sergeant that he was fired from in the summer.

The state Personnel Appeals Board will hear Savage's reasons why he's appealing his dismissal.

In Savage's August dismissal letter, Steve Huntsberry, the chief of campus police, said that Savage was no longer qualified to be an officer because of a pattern of dishonesty.

The problem began with a background check on an applicant applying to be a campus officer.

Savage believes the reason he was fired was because since 1989 he has pushed for campus security to become an armed police force, which

resulted in an in-campus conflict that involved faculty, staff and student opposition to guns on campus.

Art Costantino, the vice president Police Services answers to, said he believes the college has a different view of what happened but he cannot talk about it. "I can't comment on personnel matters, especially those that involve litigation," said Costantino.

Huntsberry mirrored that view. "I wish I could talk to you — I'd love to talk to you but I can't," Huntsberry said.

"You're only receiving half of the information," he said.

In Savage's dismissal letter, Huntsberry explained why the college fired Savage.

As part of his job, Savage, last November, conducted a background check on a police applicant. Subsequently, the applicant was hired as a probationary officer based on Savage's

recommendation to Huntsberry.

However, the probationary officer didn't qualify to pass the screening process during probation and has since resigned.

In Savage's dismissal letter, Huntsberry contends Savage omitted information that would have made the applicant ineligible.

Huntsberry began to question whether or not the probationary officer was qualified to be an officer because of information that came up during the probation screening process in January, Huntsberry said in the letter.

In February, Huntsberry told Savage to recheck the probationary officer's background and Huntsberry said in the letter Savage failed to tell him that the information that Savage found out was significant to the screening process.

In June, Huntsberry and Costantino became concerned about the information that

came out earlier on the probationary officer's qualification to be an officer. This time, Huntsberry did the check himself. He discovered that indeed the probationary officer wasn't qualified to be an Evergreen officer.

Then in July, Costantino called Savage into his office. In the letter, Huntsberry contends Savage told Costantino that there was no problem with the probationary officer's qualifications to be an officer and that Savage didn't tell Costantino about the problem until Costantino asked him a series of questions.

"It was your duty as [the person responsible for investigating the applicant's background] to uncover and inform me of the facts. You failed to make this information known to me and told me that the information you obtained was not significant. This constitutes neglect of duty and gross

see SAVAGE on page 7

Ethernet coming soon



photo courtesy of Housing

ResNet coordinator Pat Castaldo believes ethernet will begin to be connected to the dorms, starting with E-Dorm, within six to seven weeks.

Story page 6

Changes in the Corner Cafe back in business

VIEWPOINT ►

by Jennifer Koogler
and Ethan Jones
Staff writers

At the Corner Cafe, a few things have changed. Don't worry, though, the food is still tasty and it is still operated by students. Most of the changes are intended to make your dining experience more efficient and convenient.

Gone are the days of heaping salads piled with far too many sprouts for one human to consume and globs of lemon tahini dressing so thick they might as well be pudding. The Corner now has a serve yourself salad bar sitting in front of the cafe, for customers to create their own vegetable monstrosities. All the regulars are back; shredded carrots, red cabbage, creamy dill dressing. But for 20 cents an ounce, you are now in charge of your own sprout destiny.

The Corner will also feature more consistent menu offerings, like wraps and burritos, along with a smaller variety of dinner entrees. Each of the items are around the same prices as last year, starting at about \$2.25 for a burrito and \$2.75 for an entree.

The Corner has also added an espresso machine and a juice machine for customers

see CORNER on page 7

Our sister county

Students visit Santo Tomás, Nicaragua

by Justin Umholtz
and Qy-Ana Manning
TSTSCA members

Last spring a group of six Evergreen students traveled to Santo Tomás, Nicaragua to participate in the second year of an exchange program sponsored by TESC and the Thurston-Santo Tomás Sister County Association (TSTSCA). Since its founding in 1987, TSTSCA has worked in solidarity with the people of Santo Tomás to take a stand against U.S. foreign policy that causes the dependency and economic deterioration of Central America. Solidarity efforts have focused on fostering personal ties between our communities and supporting activities that promote self-determination and self-sufficiency for the Nicaraguan people.

While in Santo Tomás, TESC students lived with Nicaraguan families, attended Spanish classes, worked on individual academic projects, and participated in a wide variety of community projects coordinated by the Committee for Community Development in Santo Tomás. These projects included a non-profit health clinic, a community education and nutrition center, a women's sewing cooperative, and a women's farming cooperative.

"Living and working in Santo Tomás proved to be one of the most exciting and

rewarding experiences of my life," said Qy-Ana Manning, one of the students who recently returned. "I can't wait to go back to visit my friends and family and work more with the community."

As a means to share their experiences and promote interest in the Santo Tomás student exchange program (and TSTSCA), the 1997 student delegation will be presenting a slide show at TSTSCA's Annual Potluck and Membership Meeting on Mon., Oct. 20 at 6 p.m. at the First United Methodist Church (at the corner of Legion and Boundary Streets, in East Olympia). Everyone is invited and encouraged to attend this outrageous event! Students will also be presenting slides and holding a discussion period at TESC on Nov. 6 for those who can't make the potluck. Other activities in the works include a Salsa/Merengue dance party in November, as well as further discussions, Nicaraguan poetry readings, films and more.

We're also excited to announce the impending visit of two grade-school teachers from Santo Tomás who will be arriving in Olympia in early January! They will be speaking both on and off campus about their lives and experiences, as well as the social, political, and economic realities in Nicaragua.

If you're interested in learning more about the student exchange or becoming involved with the TSTSCA, please contact 866-1912.

Hare Krsna spreads word



photo by Hillary Rossi

Mark Von Banks, once an Evergreen student, spent a rainy Tuesday afternoon handing out books on Red Square for the International Society for Krsna Consciousness. His books and beliefs tell him that we are not body, but soul. He is shown here with Evergreen student, Amy Hacker.

There are a few corrections to last week's story "Parking office budget explored" by Robert Walker concerning the Parking's 97-98 budget. The article says the Parking office collects over a quarter million dollars annually. According to Collin Orr, student financial services manager, that number is really around \$350,000. \$250,000 come from selling permits, while \$96,000 come from tickets and other parking infraction fees. Of that money, Orr says the Parking office writes off about \$52,000 in fees they know they will not be able to collect.

The article went on to say the rest of the money went to paying salaries. In actuality, only \$133,000 went to paying the salaries of the three full time staff members and the part time student workers. Orr says Of the rest, \$35,000 went to maintenance contracts like snow removal, lighting, garbage removal, and other upkeep expenses. Another \$8,000 went to other maintenance expenses like adding signs and repairs to the Parking booth. The Parking office also spent \$97,000 resurfacing the lots.

The article stated \$21,057 went to office supplies. Orr says only \$1,442 were spent on actual office supplies like staples and paper clips. The rest paid for printing out parking tickets, the parking office's phone bill, computers, and other necessary operating expenses.

The article also stated the committee that looked over the parking situation overlooked the administrative expenses. Orr says he was a member of that committee and it in no way overlooked the expenses it would take to administrate the office.

In the article "Students protest Nike practices" by Abigale Ada Beeley, second year Evergreen student Leone Reinbold's first name was accidentally spelled "Leona." We apologize to Leone for the mistake.

In the article on ArtWalk by Kathryn Lewis from the Oct. 9, 1997 issue, the third paragraph read: Last fall, Hughes made a book of papercuts, displayed at the Nature Store. There was some confusion during copy editing which resulted in confusing Hughes work with the work of Nikki McClure. The third and forth paragraphs should have read:

Another artist of interest is Nikki McClure, an Evergreen alumni. Her display is in the window of Archibald Sisters. If you missed it during ArtWalk, you can probably still catch it when you walk by. Last fall, McClure made a book of papercuts, displayed at the Nature Store. The characters in her papercut book resembled the characters in her window display.



BAGEL BROTHERS

Bagel Bakery and Sandwich Shop

~ OVER 20 VARIETIES BAKED FRESH DAILY ~
~ OPEN 7 DAYS A WEEK ~
~ ESPRESSO ~ CATERED TRAYS ~

OLYMPIA - WESTSIDE

Next to Payless
400 Cooper Pt. Rd

352-3676

M-F 7-7
Sat 8-6
Sun 8-5

OLYMPIA - EASTSIDE

Near Low Rents
2302 E. 4th Ave

943-1726

M-F 6-6
Sat 8-5
Sun 8-4

LACEY

Next to Fred Meyer
720 Sleater-Kinney Rd.

456-1881

M-F 7-7
Sat 8-6
Sun 8-5

TUMWATER

Next to Albertsons
855 Trospur Rd.

786-6890

M-F 7-7
Sat 8-6
Sun 8-5

Cooper Point Journal

CAB 316, The Evergreen State College, Olympia, Washington 98505

Editorial
866-6000 / x6213

Business
866-6000 / x6054

Advertising
866-6000 / x6054

Subscriptions
866-6000 / x6054

Internet
cpj@elwha.
evergreen.edu

Weekly Story Meetings
Mondays at
4:30 p.m. in CAB 316

News

Interim Letters and Opinions Editor: Hillary Rossi
Interim Newsbriefs Editor: Kathryn Lewis
Guest See-Page Editor: Ethan Jones
Interim Comics Page Editor: David Scheer
Interim Calendar Editor: Jennifer Ahrens
Interim Security Blotter Editor: John Evans
Systems Manager: Tak Kendrick
Layout Editors: Kim Nguyen
Guest Layout Editor: Gary Love
Interim Photo Editors: Gary Love & Amber Rack
Interim A&E Editor: Tak Kendrick
Managing Editor: Leigh Cullen
Editor in Chief: Jennifer Koogler

Business

Business Manager: Keith Weaver
Assistant Business Manager: Amber Rack
Advertising Representative: Trevor Pyle
Ad Designers: Marianne Settles & Gina Coffman
Circulation Manager: Cristin "tin tin" Carr
Interim Ad Proofer: Bridgett Harrington

Advisor: Dianne Conrad

© all CPJ contributors retain the copyright for their material printed in these pages

The Cooper Point Journal is directed, staffed, written, edited and distributed by the students enrolled at The Evergreen State College, who are solely responsible and liable for the production and content of the newspaper. No agent of the college may infringe upon the press freedom of the Cooper Point Journal or its student staff.

Evergreen's members live under a special set of rights and responsibilities, foremost among which is that of enjoying the freedom to explore ideas and to discuss their explorations in both speech and print. Both institutional and individual censorship are at variance with this basic freedom.

Submissions are due Monday at Noon prior to publication, and are preferably received on 3.5" diskette in either WordPerfect or Microsoft Word formats. E-mail submissions are now also acceptable. All submissions must have the author's real name and valid telephone number.

STRESS BREAK

EVERGREEN'S SEATED MASSAGE SERVICE
Take A Study Break!



- Seated Acupressure Massage
- Relieves Tension & Pain
- Relaxes & Rejuvenates

Library Lobby
Wed & Thurs 2 - 5pm
From 10-20 mins. \$7-13
Or Schedule In Your Work Area



Teresa Scharff & Associates
805 West Bay Drive, Olympia 943-7739

Who removes graffiti?

How maintenance works

by Sara King
Contributing Writer

During the 14 years Clint Steele has worked for Evergreen on Maintenance, he's seen a lot of changes, and a lot of weird things occur. Besides the graffiti that seems to mysteriously pop up over night, stranger things have happened. At one time, for nearly four years straight, someone had "plagued" the maintenance department, by constantly and consistently tearing off door knobs in buildings all over campus. Fortunately, the thief just went away eventually, but where does the money come from, to fix these weird occurrences?

The Evergreen State College maintenance departments receive a one million-dollar budget to work with for the next two years. The budget is funded by the state legislature and goes to doing jobs all over campus. They're called capital projects and range anywhere from putting in exterior lighting at the Organic Farm to replacing the wood railings around the library entrances, building a new Organic Farm deck and putting in more emergency phones on campus. The projects could literally be anything. Maintenance works to keep campus safe for everyone that uses it. "The campus is our clientele," says Steele "and we serve the campus community."

In reality, many students don't know much about Maintenance. They always try to work around the students, planning larger jobs when school is not in session and working at night. Other jobs they try to slip in when possible, always thinking about the campus community's use. Maintenance works closely with Space Management, so they know where the students are going to be and when. They also work closely with the Environmental Health and Safety office, to get approval for products that they use. Occasionally they've had to change products due to people's health concerns.

When asked what some problems were for working at Evergreen, Clint really didn't have any. Besides the occasional waves of vandalism, Evergreen seems to be a great school to work for. In general the students are supportive of the work Maintenance does.

A CLOSER LOOK

at Evergreen

by Amber Rack

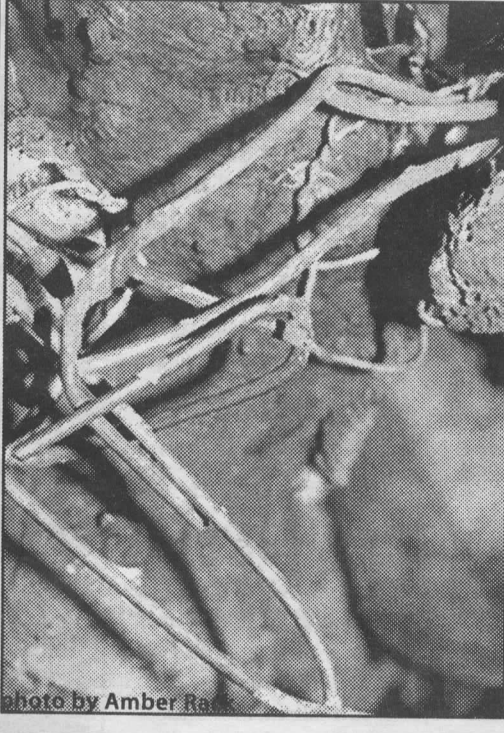


photo by Amber Rack

HINT:

Once upon a time there was a little grey man. He lived in a magical green forest. A group of travelers was wandering through the forest when they came upon the little grey man.

"What is your destination?" asked the little grey man.

"We seek adventure, excitement, lost treasures, and really good food."

The little grey man sighed. "You must go to the center of the forest; there you will find what you seek."

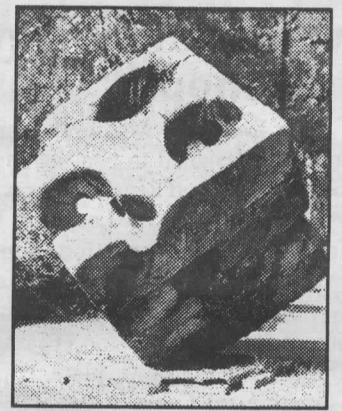
As they made their way into the forest, the travelers overheard two vicious robbers talking.

"I say we take on the little grey man tomorrow," one said.

"You've been sniffing pine cones again, haven't you?" said the other.

The travelers left the vicious robbers and didn't hear what came next.

Last week we took a closer look at...



the Swiss Cheese Stone sculpture.

The mystery of the mice remains unsolved!

If you or someone you know has information leading to the identity of the unknown rodents, please call the CPJ Hotline at campus extension 6223.

Choose your own curriculum

Forum will give students a say in class formation

by Jennifer Koogler
Editor in chief

If you've ever held a new Evergreen catalog in your hands, you've felt the anticipation as you eagerly flip to your area of interest. And you may have felt the frustration of not finding a program of interest to you.

If this situation has occurred to you one time too many, you should attend the student curriculum forum this Wed. Oct. 22 from 1 to 3:30 p.m. in the Longhouse Cedar Room. This student generated forum is an opportunity for students to tell the faculty what kinds of classes they would like to see offered in the future.

Fourth year student Jason Schwarz is a peer counselor in the Academic Planning and Experiential Learning (APEL). He is coordinating the forum in an effort to raise student participation in program development and awareness of how our classes are formed.

Schwarz stresses the importance of freshmen and sophomores attending the meeting, as the suggestions offered will benefit them directly. Because classes are formed about two years in advance, they have the chance to say exactly what they want to take in their later years here.

Third and fourth year students' comments are also important, says Schwarz, as they have "first hand knowledge of where there are inefficiencies" in the class offerings. Having

been here for awhile, they have a greater perspective of what isn't being taught at Evergreen.

Transfer students are valuable to the student contribution process, the peer counselor adds. He says they bring their experiences of other colleges and programs that worked for them.

Schwarz suggests students come with ideas for classes they would like to see in the future and areas of study which are underrepresented in the current curricular offerings. Students who have worked on contracts in the past which were of particular of interest to a wide array of students are invited to suggest their ideas for possible programs.

The faculty and deans need to know not only what types of classes students want, but when they want them to be offered, says Schwarz. Most full time classes at Evergreen last three quarters, but recently the number of one and two quarter programs has increased. Schwarz says if students want more one quarter classes in the spring or more two quarter classes starting in winter, or other such arrangements, the forum gives them an opportunity to let these concerns be known.

Schwarz invited the coordinators from each of the five planning groups that divide programs into areas of study. Rita Pougiales and Bill Arney from Culture, Text and Language (Perspectives on Ireland, Music and Theater in

Cultural Context, etc.), Mike Beug from Environmental Studies (Introduction to Environmental Studies, Ecological Agriculture, etc.), Sally Cloninger from Expressive Arts (Art Media Praxis, Foundation of Visual Arts, etc.), David Paulsen from Scientific Inquiry (Data to Information, Matter and Motion, etc.) and Carolyn Dobbs from Social Science (Political Economy of Inequality, Science of Mind, etc.) head the faculty in these areas to help guide program development. He also invited representatives from Part Time Studies, which not only accommodates students going to school half time, but helps full time students to fulfill prerequisites and supplement their programs.

Programs at Evergreen are mainly designed by the professors. Faculty get together in groups or come up on their own with ideas for classes, planning for them at least two school years in advance. Deans, similarly, identify holes in the curriculum and suggest ideas for classes to fill them. Schwarz says he invited representatives from both groups to hear students' concerns because "both sides have ears."

Schwarz scheduled the forum so the faculty and deans would have student's concerns in mind as they go to retreat three weeks from now. Retreats are used as a space for dialogue about the breath of our curriculum, particularly first year programs.

HARBINGER INN Bed & Breakfast

Charming 1910 Mansion
Overlooking the Puget Sound
Ask About Our Budd Bay Bungalow

1136 East Bay Dr, Olympia, WA 98506 • 754-0389

Orca Books
Olympia's Largest Independent Bookstore

Student Discount
10% Off New Texts

We buy books everyday!

509 E. 4th Ave. • 352-0123
Mon-Th 10-8, Fri & Sat 10-9, Sunday 11-5

VINTAGE CLOTHING

The Vintage Loft

At Harmony Market
Vintage Clothing from the 1970s to the 1860s.

113 Thurston Ave NE
Open 7 Days a Week
956-7072

What would YOU like to see as a class at Evergreen?

Suggestions: Underwater Basketweaving in Social Context, the Hula Hoop in Modern Day Latin America, or possibly the Spice Girls Revolution: The New Woodstock?

Use this space and submit it to the CPJ in CAB 316

Newsbriefs

Evergreen Medieval Society workshops

The Evergreen Medieval Society presents a series of workshops designed to educate and illuminate newcomers about Medieval and Renaissance recreation in modern times, known as Newcomers Learning Days. Beginning level workshops of information about medieval costume construction, heraldry, cooking, dancing and music, court behavior and manners, light and heavy fighting and much more. Admission is \$2 for TESC students with ID, and \$5 without. Bring a bowl, plate, cup and spoon. For more information, call Gaelis O'Alae at x6412.

Study abroad opportunities

According to Chris Ciancetta, Coordinator of International Programs and Affairs, studying abroad is one of the most educational experiences. "You learn things about yourself you would have never known." Ciancetta herself studied in London while in college. There are different ways students can study abroad while attending Evergreen. The first way is through programs offered at Evergreen. There are six programs going abroad to Greece, Chile, France, Ecuador, Costa Rica, and Ireland this year. Another option is through exchange programs and study abroad institutes. This allows students to attend universities in countries around the world and participate in programs in Japan, South Africa, Mexico, France, and Central America. The third option is through an individual contract. This allows for self-directed studies abroad, but requires the most dedication. The APEL, in Library 1401, has information on all of the study abroad programs open to Evergreen students. Workshops concerning study abroad will be Oct. 20, 10 to 11:30 a.m. and Nov. 4, 12 to 1:30 p.m. in Library 2101.

—Eryn Hurlburt

Actors needed

Actors are needed for Cable T.V. They are looking for people from the ages 22 to 30. No experience is necessary. If you are interested please call Fedra at (360) 357-2246.

WashPIRG campaign

WashPIRG is kicking off its watershed campaign. This Saturday, Oct. 18, they will be planting 500 native plants along the shore line of Budd Inlet to help stop erosion. They are looking for volunteers. This event begins at 9 a.m. and ends at 12 p.m. If you can, bring a vehicle for carpooling, meet at the TESC parking lot at 8:30 a.m. For more information call x6058, or stop by the office in the Lecture Hall basement.

Pattiann Rogers' poetry

The Olympia Poetry Network will present a reading by award winning poet Pattiann Rogers at the Washington Center for the Performing Arts on Wednesday, Oct. 22 at 7:30 p.m. Admission to this event will cost \$4. Tickets are available at the Washington Center for the Performing Arts. For more information call (360) 753-8586.

Slightly West submissions

Slightly West, Evergreen's literary arts magazine, is seeking submissions for the upcoming winter issue. Slightly West accepts poetry; short, squat stories, and artwork that reproduces well in black and white. Anything from DADA to MOMA. "Found" poetry and objects, surrealism, and offbeat and bizarre are particularly welcome. Evidences from the film, dance, and musical world are much awaited. Please no more than six pages of anything. The deadline is Friday, Oct. 31. To submit, please remove your name from your work and enclose a note with your name, address, and a reliable phone number. A SASE with the correct amount of postage is required if you wish to receive a direct reply and have your work returned. Submissions may be dropped off at our mailbox in CAB 320. For more information call x6879.

Support apple workers

Come support the Washington Apple Workers in their struggle against sub-poverty wages and unjust working conditions. There is a rally at 6 p.m. on Tuesday, Oct. 21 at the Port of Tacoma. Contact the Student Workers Organization at x6098 for information and carpool plans.

What is this?

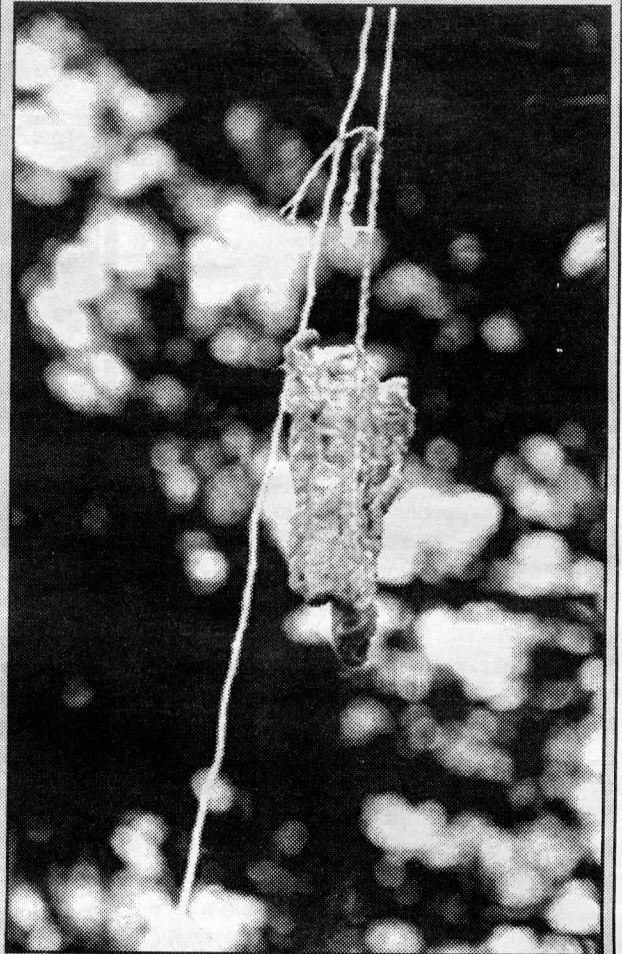


photo by Amber Rack

Monday morning, students walking to and on Red Square were greeted with an interesting sight. Dangling from various trees, doors and posts were what looked like strips of bacon from afar. On closer examination, the hanging objects were revealed to be tampons soaked in ketchup. This incident is the second time random (and somewhat disgusting) items have been hung around campus. Last spring it was chicken feet. What's next???

Security Blotter

by John Evans

October 5

- 0046- A party in N-dorm gets busted.
- 0105- Theft of a chain from the vicinity of U-dorm.
- 0615- Daihatsu towed on Fireweed Drive.

October 6

- 0157- "California stop" earns reckless driver a firm warning from Evergreen five-oh.
- 1220- Cooking faux pas? Food-burning sets off U-dorm fire alarm.
- 1408- Graffiti found in numerous campus areas.
- 2106- Police Services deliver a letter to N-dorm. I bet it wasn't one of those "You may already be a winner" things from Ed McMahon.

October 7

- 1022- "Boot" applied to immobilize vehicle in Longhouse parking lot.
- 1200- Boot slapped on coche in B-lot.
- 2000- Suspicious circumstance in the CRC locker room.

October 8

- 0945- Found property: a metal "lunchbox" type container with possible contraband inside. My question is, would a BeeGees thermos qualify as contraband? It should.

1146- Boot applied in B-lot.

1332- Police Services Ford refueled (9 gallons) at a mileage of 82,926. If the Ford gets 19 miles per gallon, what will be its total mileage when next it is refueled? If you answer this *Security Blotter Puzler* correctly, you are the instant winner of an absolutely free copy of the CPJ! Pick up your prize at the CAB next Thursday!

1350- B-lot is the scene of yet another clipping of the wings, boot-style.

1905- The doors of the Ford patrol vehicle no longer secure properly, and the seats may be inoperable. Maintenance is required. Fortunately, the beverage caddies are still in tip-top working condition.

October 9

1345- Boot applied in B-lot. It is announced that there are no vehicles remaining on campus that are not booted.

1521- C-lot: Police Services comes to the aid of motorist who locked his keys in his car.

1549- C-lot: Police Services comes to the aid of motorist who locked his keys in his car. No, it wasn't the same motorist (wouldn't that be embarrassing?)

2247- Verbal warning issued for defective rear lighting at intersection of the Parkway and Kaiser Road. Remember, kids: never leave the garage unless your rear is properly lit.

Internships with the state legislature

Evergreen juniors and seniors interested in political science, public advocacy, or government can take advantage of our Olympia location. The state legislature and a number of lobbying organizations are now accepting applications for the upcoming legislative session. Internships offer students an opportunity to learn first-hand about state legislative procedures, meet with and work among state representatives, aid environmental and social concerns, develop career and technical skills, and earn resume experience. The following are some of the available opportunities: Legislative Internships, House of Representatives Photography Internship, House of Representatives Video Internship. For more information contact Academic Planning at x6312.

Santo Tomas potluck

Everyone is invited to the Thurston-Santo Tomas Sister-County Association's annual potluck and membership meeting on Monday, Oct. 20 at 6 p.m. at the First United Methodist Church (at the corner of Legion and Boundary Streets in Olympia). The outrageous potluck begins at 6 p.m., followed by Evergreen student's presentation of their trip to Nicaragua and stories from our sister community. For more information, call 866-1912.

- Pizza & calzones
- Focaccia sandwiches

Jazmines

Pacific Northwest European Cuisine

- Homemade Pastas
- Seasonal fish specials

Stephen Bird
Owner/Chef
Catering Available

119 West 5th Avenue
Olympia, WA 98501
(360) 786-6590

We Buy & Sell New & Used Books

Open Everyday • New Stock Added Daily

107 Capitol Way • Downtown Olympia
Olympia's Booksellers Since 1935

Browsers Book Shop

Newsbriefs

Nisqually River Basin Land Trust lecture

The Nisqually River Basin Land Trust presents *The Amazon: The Hard Way*, a lecture by national best selling author Joe Kane. The lecture will be held at Evergreen in Lecture Hall One on Friday, Nov. 7 at 7 p.m. The price to attend the lecture is \$10 per person. All proceeds will go to the Nisqually River Basin Trust, a non profit group of farmers, business and professional people, homemakers, and others that strive to preserve and protect the Nisqually River Basin through private, non-governmental means. Call (253) 761-1652 for tickets.

Library work study positions

The library has listed work-study positions that are open to students who meet the required criteria. If you are eligible for federal or state work study, then you may apply. Each job has a timeline of approximately nine months. For more information stop by the Library Circulation desk.

—Stephanie Funk

Evergreen galleries

Jaune Quick-To-See Smith will be showing at Evergreen in Gallery II, Evans Library. This exhibit will be presented Oct. 9 to 30. A lecture by the artist will be held Oct. 16 from 6:30 to 7:30 p.m. in the Recital Hall.

Lunch time aerobics

This year, how about getting a jump on things? Lunch time aerobics will be offered at TESC Tuesday and Thursday 12:15 to 12:45 from Oct. 14 to Dec. 18. The cost is \$25, for more information call x6770.

Follow Me Home

The Capitol Theater was nearly full for the regional premiere of *Follow Me Home*. All who went will testify the film is an important and fresh look at an issue of national concern. With the President's recent call for a national dialogue on race, *Follow Me Home* comes at a perfect time. The film explores the interplay of culture and history on the present American landscape. It looks into the lives of five travelers and each of their stories. Their trek

across the country, combined with a strange accident, brings them to confront the issues of race, gender, and spirituality.

Luckily, *Follow Me Home* will be show again. It will be featured during the Olympia Film Festival on Oct. 23 at 9:30 p.m. Peter Bratt will return for another post-screening discussion about his film. On Saturday, he led the audience through a number of questions that broadened into a larger discussion about race. People spoke back and forth about their view of certain images as well as the film's underlying messages. Judging from the discussion, it is obvious more dialogue is critical. There are a number of forums for this talk, starting with the event's sponsors: EPIC, UMOJA, LASO, MEChA, and Talking about Race.

Because the film has been ignored by the larger distribution companies, advertisement has been largely by word of mouth. Those who saw the film will tell everyone they know to see it. But for those who did not, more information is available through the student groups. Everyone on campus is invited to come and share in this rare and powerful film. It is a truly unique experience that illuminates the American past, present, and future.

—Peter Kennedy

Ovulation Method information

Ovulation Method is a safe and natural birth control method that involves no chemicals or devices to be put into the woman's body. It has a 98 to 99 percent effectiveness rate and it is easy to use. Judy Hickmann is certified by the Ovulation Method Teachers Association and has over 11 years experience in personal use of the Ovulation method. There is a free informational meeting on Oct. 16 at 6:30 p.m. in room 3151 of the Seminar Building. Classes themselves are Oct. 21 and 28 and will cost \$45. Partners are encouraged to attend for free. For more information or to register for a class, call 894-3672.

S&A Productions needs help

S & A Productions are looking for six to nine students with the ability to work 12 to 19 hours a week on providing technical support to events around campus. For more information call x6222.

—Jesse Feuerstein

STUDENT GOVERNANCE OPPORTUNITIES GET INVOLVED

A number of Disappearing Task Forces (DTF) and Committees are seeking student members. Student input is critical to the functioning of the College and serving on a committee or DTF will provide you with opportunities to influence College policy and learn more about the College. The following groups are seeking student members.

- **Hiring Priorities DTF:** This DTF will set priorities for the hiring of new faculty.
- **Hearing Board Members:** Hears cases when students have been charged with violations of the student conduct code.
- **Infraction Review Committee:** These are paid positions on a board which hears appeals of parking tickets.
- **Student Governance Implementation Group:** This group will work on the implementation of student governance.
- **Deadly Force Review Board:** This board will review instances when deadly force is used by police service officers.
- **Enrollment Coordinating Committee:** Helps review and develop approaches for the recruitment and retention of students.
- **Faculty Hiring Subcommittee:** For students interested in interviewing potential faculty.
- **S&A Budget Committee:** Allocates funds to support student activities.
- **Drug and Alcohol Abuse Prevention Advisory Board:** Will help develop policy and reviews abuse prevention efforts.
- **Master Plan Update - Land Use and Physical Analysis Subcommittees:** These sub-committees will work on updating the campus's Master Plan.
- **Bookstore Advisory Committee:** Advises the bookstore in the selection of merchandise and on bookstore policies.
- **Health and Safety Advisory Committee:** This group helps to promote safety on campus.
- **Campus Public Safety Committee:** Works with Police Services to implement programs and policies to create a safer campus.
- **Communicable Disease Advisory Committee:** Provides community education about communicable diseases.
- **Prevention/Wellness Program:** Will develop programs to promote wellness.
- **Human Subject Review Committee:** This committee advises on the use of human subjects in research.
- **ADA Compliance Committee:** This committee evaluates our progress in insuring that our services and facilities are accessible to students with disabilities.
- **Athletics Advisory Board:** Provides guidance regarding intercollegiate athletics.
- **Student Representative for the Board of Trustees:** This student serves as a representative for the College's governing board.
- **Space Management Group:** This group sets policy and approves space usage on campus.
- **Food Service Facilities DTF:** This group will examine our food services facilities and venues.
- **Communications Board:** Provides guidance on student media issues.
- **Student Representative Selection Committee:** Will advertise and help choose a student representative on the Board of Trustees.

CONTACT: VICE-PRESIDENT OF STUDENT AFFAIRS



All That Jazz Cafe

Food from sunny places.

- Live Jazz, gourmet menu, full bar on Thurs, Fri and Sat.
- Tues. and Wed. nights are club nights w/ live, eclectic, local entertainment, \$2.00 drafts & well and an affordable menu.

534-9212 • 325 E. Fourth Ave.
at the corner 4th and Adams
All That Jazz is owned by Greener grads

WOULD \$45,000+ HELP WITH COLLEGE?



You can earn more than \$18,000 during a standard Army Reserve enlistment...

And over \$7,000 if you qualify for the Montgomery GI Bill...

Plus if you have or obtain a qualified student loan, you could get help paying it off—up to \$20,000—if you train in certain specialties in specific units.

And that's for part-time service—usually one weekend a month plus two weeks' Annual Training.

Think about it.
Then think about us.
And call:

1-800-235-ARMY, ext. 321

BE ALL YOU CAN BE!
ARMY RESERVE
www.goarmy.com

Housing residents get wired

ResNet offers students cable television and fast Internet access

by Tak Kendrick
Staff writer

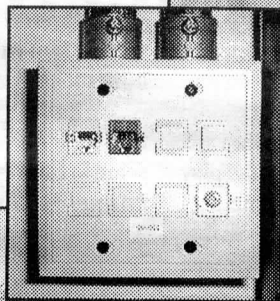
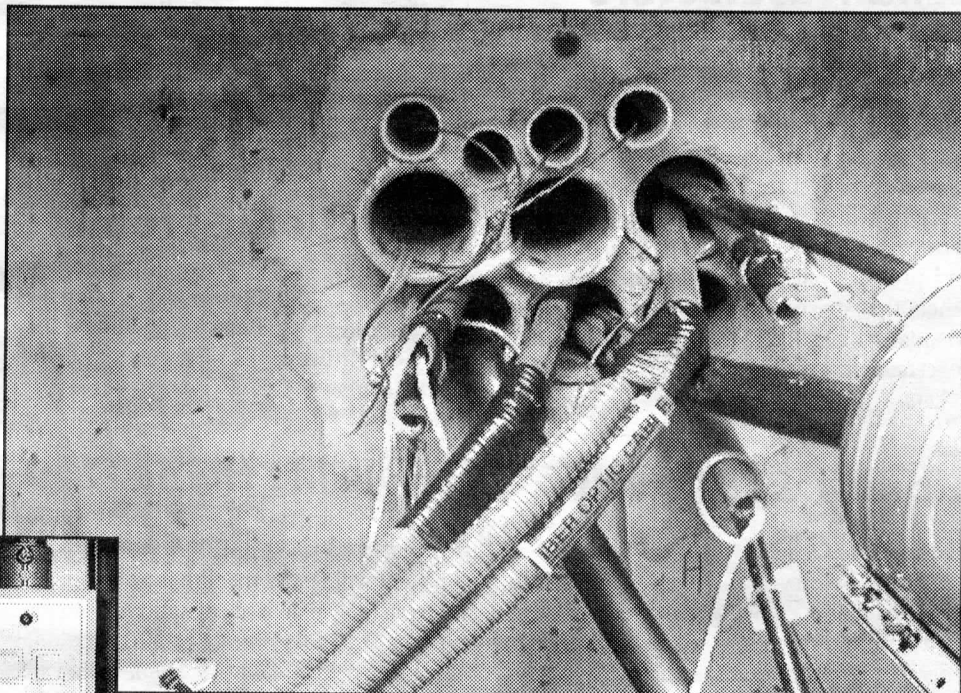
ResNet is coming. The pieces are beginning to fall into place for the installation of the next step in Housing's \$1.2 million wiring project. The Evergreen Residential Network, or ResNet, will give all residents access to the school's computer network as well as being a smaller network just for housing residents.

The first step in making ResNet a reality was installed over the summer. The communication boxes, which have ports for cable, phone and ethernet, as well as the hard-wiring for the ports was installed in all the buildings except the Mods. The next step, according to Pat Castaldo, ResNet coordinator, is to connect each of the buildings to the HUBs and routers, or control boxes that will route all of the information to and from the dorm rooms to the Housing and campus networks.

advantage to the HUBs ResNet will install. In the future, when connections to the Internet can be made faster, and when the campus network is upgraded, ResNet will already be in a position to use the new technology.

THE FIRST LINE OF SUPPORT

Mike Segawa, Housing director, says the new HUBs and routers are about six to seven weeks away. In the meantime, ResNet is not sitting idle. Castaldo recently interviewed 16 people for four positions as ResTechs. According to their mission statement, ResTechs are "responsible for the on-going support and education of Housing residents on Evergreen's Residential Network. ResTechs are Housing's first line of computer, telephone and cable television support, working directly with residents in their rooms to get and keep them



-photos courtesy of housing

TOWARDS THE FUTURE

The HUBs and routers are on order from Cisco Products. While Housing and Castaldo had hoped to have the equipment earlier in the year, the wait has brought about good things. Originally, ResNet was going to operate with an older model of the HUBs which would allow connection speeds one-way of up to 10 times that of what the campus network currently uses.

The models ResNet ended up with, however, are newer, cheaper and allow two-way connections of the same speed. Right now, most home computer can't operate at that fast of a speed. Because the campus network is slower and the lines that connect the campus to the Internet can't handle the increased speed, the faster speed of the HUBs is negligible. But, Castaldo stresses, there are

connected."

During Fall quarter and early part of Winter quarter, the primary part of the ResTech's jobs will be to help connect residents to ResNet. This involves showing them how to hook up the equipment to their computers, setting up software and providing tutorial help. In the later part of winter and in the spring, the ResTechs will be mostly doing support work for

the residents who are connected. This includes troubleshooting, maintenance, and even some help in general computer programs such as Word or Excel.

The ResTechs, says Castaldo, will also be giving workshops for residents in the spring, based on topics or problems that the residents want addressed.

Currently, the ResTechs are beginning their training in anticipation for a month and a half from now. Once the HUBs arrive, their real work begins.

COMING SOON — RESNET

ResNet will unfold in stages. As soon as the HUBs come in, installation will begin. Castaldo and Housing have planned for the installation to occur one building at a time, to give the ResTechs the ability to help connect residents on an individual basis, instead of suddenly having hundreds of jacks and hundreds of residents wanting to be connected immediately.

They will begin with E-dorm and work their way through U-dorm, finishing up with B, C and D dorms and finally A-Dorm. Each

dorm will require two HUBs, with the possible exception of A-Dorm which, due to its size, might require three or four HUBs.

Once everything is in place, connecting to the network is easy and relatively cheap. PC users will have to buy an Ethernet card which retails for about \$25-40 depending on the brand and capabilities. All new Macs already have Ethernet built-in and require not additional cards. At present, Castaldo is not sure whether resident will have to supply the cables that will connect their computers to the Ethernet ports. In some of the dorms, due to the physical dimensions of the space, the ports might be up to 25 feet from where a resident would want to put a computer. In that case, special cables are required which Castaldo plans to check-out to residents.

ResNet is coming. While there have been a few speed bumps in getting the network connected, Castaldo is confident that the goal of getting all residents connected by the end of the quarter will be achieved.

For more information on ResNet or when it will be installed in your dorm, call the ResTech Hotline at x5111.

Mama's PIZZA
from the Ground up
120 N. PEAR OLYMPIA, WA 98506 • RESERVATIONS 943-9849

FIVE CORNERS
Books & Tools for the
Mystical and Magical
Larger Space; More Stuff; Tarot &
Rune Readings; Ask about our Book
Exchange and astrological services.
Open 11 - 6 Mon-Sat
610 Columbia St. SW Olympia, WA 98501 (360) 352-4349

WASHTUB LAUNDROMAT

The only self-service laundromat on the west side
Drop-off dry cleaning down comforters—no problem!

2103 Harrison Ave.
across from the new Value Village
943-9714

Finally...a reason to wash your clothes!

Master in Teaching at Evergreen Application Information

Workshops:* Thu. Oct 30 6-8 pm & Sat Nov 1 1-3 pm
GRE, Fin. Aid, Endorsements, Resumes
Thu. Nov 13 6-8:15 pm & Sat Nov 15 1-3:15 pm, Writing graduate application essays
* Thursdays: Longhouse Cedar Room Saturdays: CAB 108

Weekly Information Sessions: (drop in) Wednesday's, Noon-1pm
Seminar Bldg. 4122

APEL Planning Sessions (call Ext.6312 for location)
Nov. 5, 11-Noon, Dec 4, 2-3 pm

For info, call: **The Evergreen State College**
Master in Teaching Program-360/866-6000 Ext. 6181
Olympia, WA 98505

SAVAGE

continued from cover

misconduct," Huntsberry said in the letter.

But that's not what Savage says happened.

Savage said he had in fact told Huntsberry in February there was a problem with the probationary officer's background. Savage said he told Huntsberry everything. "When I got off the phone with [a person who confirmed the information discovered in the screening process], I went immediately to Steve Huntsberry's door and said, 'Steve, we have a major problem,'— this is on Feb. 7," said Savage.

Savage also said he told Costantino everything in their July meeting. "[Costantino] told me he wanted a little more information on [the probationary officer], so I sat down and shared with him what I had learned," Savage said.

Savage has had problems with the college before.

Savage said he was dismissed in 1989 after he filed a unsafe working conditions complaint with the state Department of Labor and Industries. He appealed to Labor and Industries and got his job back.

Savage says that then and now he was fired because he pushed to arm campus police.

If this Monday's appeal board doesn't rule to give Savage his job back, Savage can take his case to the state superior court. Regardless of what happens at the appeals board, Savage said he intends to file suit for "millions of dollars."

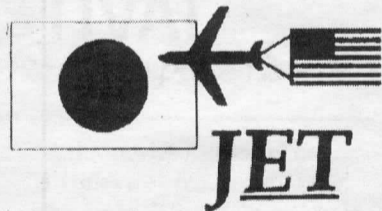
Savage said he's going file suit because "I'm tired of the bullshit— tired of the stress on me and my family. I'm tired of getting my chain jerked every time they feel like jerking it."

This random space brought to you by the



EXPERIENCE JAPAN FOR A YEAR!

RECRUITING NOW FOR



THE JAPAN EXCHANGE AND TEACHING PROGRAM

*Positions: Assistant Language Teacher (ALT)
Coordinator for International Relations (CIR)
*Qualifications: American citizen, best suited for those under 35 years of age (in principle), obtain a BA/BS degree by 6/30/98.
*Position begins: Late July 1998. One year commitment.
*Salary/benefits: 3,600,000 yen (approximately), airfare, housing assistance.
*Application deadline: December 9, 1997

Visit our table @
"Grad School & Intern Fair"
Fri., 10/24/97
in the Longhouse

Consulate-General of Japan
601 Union St., Suite 500,
Seattle, WA 98101
TEL: (206) 224-4374

CORNER

continued from cover

who enjoy sipping a latte or a carrot-apple juice while dining. Juices start at \$1.10 for a 12 oz glass and the espresso machine will hopefully be fully operational next week.

Mara Simmons worked at the Corner last year and seems enthusiastic about the new changes. The goal was to make the Corner more accessible, consistent and "efficient without selling out," says Simmons. Last year, the Corner's staff came up with a floor plan for the new arrangement (a mini counter, separate register area, display cases for sodas and desserts and the aforementioned salad bar). They have divided their consensus decision making process, creating smaller committees to work on things like hiring and community outreach, and then reporting back to the larger group. Simmons says they hope this system will help them run more efficiently. To accommodate the changes in menu and operation, the Corner now has 28 members, a number somewhat larger than last year.

Friday, Oct. 10 was opening day for the Corner. Simmons says the lines sprawled from the counter, out the door, and onto the soccer field, all waiting for the 25 cent pizza. The incredible demand left staff rolling out dough

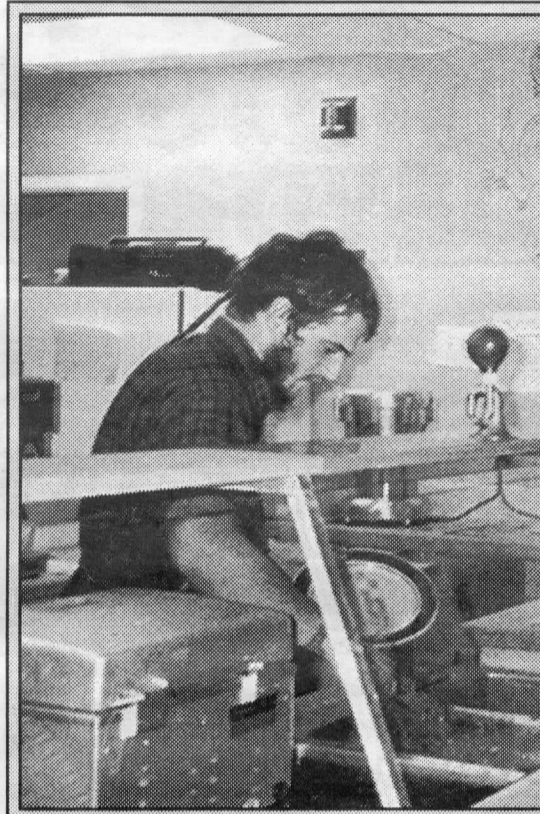


photo by Jennifer Koogler

The Corner Cafe is located in the Housing Community Center. It is open for tea (which isn't just tea, there is also espresso, coffee, juices, and baked goods) Monday through Friday from 7:30 to 10:30 a.m. Lunch is Monday through Friday from 11:30 a.m. to 3 p.m. except for Wednesday, when they are open from 11:30 a.m. to 2 p.m., and includes items such as burritos, soups and salads. Dinner includes different entrees, desserts, the world famous salad, juice, and other delights of the dairy and non-dairy variety Monday through Friday from 4:30 to 9 p.m. with the exception of Wednesday, when it's from 5 to 9 p.m.

all night long.

Simmons says the Corner may put out a survey to Housing residents in the future to find out what else students want from the

Corner. Future changes to the Corner will depend on the results of the proposed survey. In the meantime, travel over to the Corner for some great food.

★★★★★
—Morningstar ratings for the
CREF Global Equities Account, CREF Equity Index Account,
and CREF Growth Account*

AAA
—S&P and Moody's rating for TIAA**

#1
—The 1995 DALBAR Ratings Customer Satisfaction Survey***

"Your service bowled me over."
—William Ravdin, TIAA-CREF Participant

**Top ratings from
Morningstar, Moody's, S&P,
DALBAR, and Bill.**

TIAA-CREF.
Proven
Solutions
To Last
a Lifetime.

We take a lot of pride in gaining high marks from the major rating services. But the fact is, we're equally proud of the ratings we get in the mail every day from our participants. Because at TIAA-CREF, ensuring the financial futures of the education and research community is something that goes beyond stars and numbers. So from traditional and variable annuities to life insurance and personal savings plans, you'll find we provide the right choices—and the dedication—to help you achieve a lifetime of financial goals. The rating services back us up. So does Bill.

To receive a free Personal Investing Kit, including charges and expenses, plus our variable annuity prospectuses, call us at 1 800 226-0147. Please read them carefully before you invest or send money.

www.tiaa-cref.org



Ensuring the future for those who shape it.™

*Source: Morningstar, Inc. June 1997 Morningstar is an independent service that rates mutual funds and variable annuities. The top 10% of funds in an investment category receive five stars and the next 22.5% receive four stars. Morningstar proprietary ratings reflect historical risk-adjusted performance, and are subject to change every month. They are calculated from the account's three-, five- and ten-year average annual returns in excess of 90-day Treasury bill returns with appropriate fee adjustments, and a risk factor that reflects performance below 90-day T-bill returns. The overall star ratings referred to above are Morningstar's published ratings, which are weighted averages of its three-, five-, and ten-year ratings for periods ending June 30, 1997. The separate (unpublished) ratings for each of the periods are:

Period	CREF Stock Account Star Rating/Number of Domestic Equity Accounts Rated	CREF Bond Market Account Star Rating/Number of Fixed Income Accounts Rated	CREF Social Choice Account Star Rating/Number of Domestic Equity Accounts Rated	CREF Global Equities Account Star Rating/Number of International Equity Accounts Rated	CREF Equity Index Account Star Rating/Number of Domestic Equity Accounts Rated	CREF Growth Account Star Rating/Number of Domestic Equity Accounts Rated
3-Year	4/1,423	4/566	4/1,423	5/274	5/1,423	5/1,423
5-Year	4/924	4/364	4/924	5/158	N/A	N/A
10-Year	4/441	N/A	N/A	N/A	N/A	N/A

These top ratings are based on TIAA's exceptional financial strength, claims-paying ability and overall operating performance. *Source: DALBAR, Inc. 1995 CREF certificates are distributed by TIAA-CREF Individual and Institutional Services. For more complete information, including charges and expenses, please read the CREF Prospectus offered above. Read it carefully before you invest or send money.

Job opportunities for:

People with experience in high-tech,

People with majors in high-tech,

People with major interests in high-tech,

People with minor interests in high-tech,

People who know a thing or two about high-tech,

People who spell high-tech "hi-tech,"

People who've driven by Cal Tech

People who think Cal Tech football rules!

Attend the Microsoft® Skills 2000 Career Expo. You'll find some of Microsoft's leading technology partners looking to make job offers to fully qualified candidates. And even if you're not fully qualified, top training experts will be on hand with valuable information to help you start building a career in the high-tech industry today. The Microsoft Skills 2000 Career Expo will be held for one day only!

**October 20th, from 11:00 am to 7:00 pm, at the Hyatt Regency,
900 Bellevue Way NE, Bellevue.**

Microsoft®

Skills Growing Today's Workforce
for Tomorrow's Technology
2000

www.microsoft.com/skills2000/info/

© 1997 Microsoft Corporation. All rights reserved. Microsoft is a registered trademark of Microsoft Corporation.

TESC Sports *What's going on in campus recreation...*

Basketball brings a booster club

by Hillary Rossi
Staff writer

Starting next month, The Evergreen State College will have its first men's and women's basketball teams. Pete Steilberg, the director of athletics, called basketball the first traditional or mainstream sport to be played at Evergreen. He is therefore hoping basketball will help fans from the college and community trickle from out of the woodwork.

The athletics department of the college is starting a booster club for Evergreen's sports' teams. Members of the boosters club will lend support to the teams either by donating money so the teams can afford equipment or travel, or being present at the game for support, says Steilberg. Students, Evergreen community members, or local businesses can belong to the booster club.

Washington's Secretary of State Ralph Monroe met with men's basketball coach

John Barbee and the women's basketball coach Rick Hardin and told them he would like to support the basketball teams. Steilberg said that Monroe thought that the basketball team would build community among people in western Washington. He held a reception last night supporting the basketball team, influencing potential boosters and gaining support for Evergreen's athletic department. Monroe has already given money to Evergreen sports programs jokes that he and plans on attending games "to make a fool out of [himself]."

In conjunction with having a booster

club, Evergreen's athletic department is also selling banner space to local businesses that will have banners to be hung from the sidelines during both outside and inside games. This money will also go to supporting the teams.

Most of the money from this year's booster club, or the "founding boosters" as they will be known by, will support the basketball teams, Steilberg said. In future years, the money gathered from the booster club will go to support all of

Evergreen's sports.

Steilberg says the athletics department usually itself by the revenue from renting out the swimming pool, gymnasiums and play

fields to local schools, said Steilberg. But when the basketball teams were formed, the athletic department needed more money for equipment and travel.

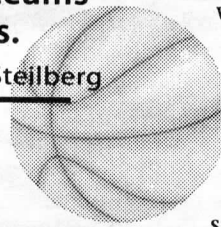
Early in the 1980s, the first booster club was started at Evergreen. But by the mid-1980s, five of the seven Evergreen sports were cut. Student enthusiasm was lost, and with it, the club.

"We have always needed a booster club," Steilberg said. "We need money for teams to go on trips." It costs approximately seven thousand dollars for a small team to go on trips, and Steilberg says that the basketball teams would qualify as small.

The athletic department need student participation to create the booster club, says Steilberg, and while they don't always have the money to donate to the booster club, they can always cheer. Students interested in the booster club should contact Steilberg at x6531.

We have always needed a booster club. We need money for teams to go on trips.

-Pete Steilberg



free on-line banking

notes for econ midterm

200 free checks

free ATM card

guest bed

free T-shirt

last Friday's dinner

{ Introducing Student Banking 101 }

Now that school's started and you're getting used to your roommate's bizarre sleep habits, perhaps it's time to get your finances in order. Which is why Seafirst Bank is introducing Student Banking 101. It's a great checking account package that lets you have convenient access to your money (or lack thereof) 24 hours a day, seven days a week. This is how it works: come in to any Seafirst branch and sign up for VERSATEL® Checking, and you'll get an account with no monthly service charges or per-check charges. Plus you'll get a lot of free stuff to go with it: up to 200 free checks, a free ATM card, free on-line banking for three months, and last but not least – a free T-shirt. We'll do everything we can to make your financial life easier – except ask your parents for more money.



Black Lake Branch • 910 Black Lake Blvd. • (360) 754-3630
West Olympia Top Foods Branch • 1313 Cooper Pt. Rd. SW • (360) 352-4280
Olympia Branch • 210 West 5th • (360) 753-8600

See branch for complete details and rules of account. T-shirts available with all new personal student checking accounts opened at selected branches while supplies last. Offer available in Washington through October 24, 1997. ©1997 Seafirst Bank. Member FDIC.

"Congress shall make no law respecting an establishment of religion, or prohibiting the free exercise thereof; or abridging the freedom of speech, or of the press; or the right of the people peaceably to assemble, and to petition the government for a redress of grievances."

— First Amendment, U.S. Constitution

Sports article update

Dennis Lanigan's article in last week's CPJ needs the following update to help reduce some issues, which may be confusing, for Greener sports fans.

1. Evergreen joined the NCAA Division III two years ago and is currently entering into its third year of a four year provisional standing.

2. Evergreen holds dual membership in the NCAA and the NCAA Division III and will continue to do so for at least two years.

3. While it is true that Evergreen's swim and tennis teams will compete as independents indefinitely, the college has been invited to join two conferences and is presently considering one. If we elect to join any conference that will benefit basketball and soccer primarily.

4. Our tennis team will be a fully intercollegiate team, which will compete with other colleges just as our soccer, basketball, and swim teams will do.

5. *The swim team is not affiliated with the Northwest (not national) Conference of Independent Colleges.*

I would be happy to answer questions and can be reached at x6531.

Pete Steilberg
Director of Athletics.

Brain rot corrections

Thanks to Elizabeth Thomas for her informative article, "Brain Rot," in the Oct. 9 issue of the CPJ. There were a couple of minor errors in her article that I would like to take a moment to correct.

The Fore people live in Papal New Guinea, not in Australia. The probable means of transmission of kuru in that population was not the ingestion of animal brains, but rather, of human brains.

Some anthropologists (Lyle Steadman of Arizona State University, for example) argue that there is no evidence of the practice of ritual cannibalism among the Fore. I personally find the evidence for the practice described in the fieldwork of SUNY graduate school anthropologist Shirley Lindenbaum ("Kuru Sorcery" — Mayfield, 1979) to be meticulous, and overwhelmingly persuasive.

At any rate, Steadman argues that kuru was transmitted in the Fore population through the handling of human corpses (which involved ritual

dismemberment). Nobody, to my knowledge, has made the claim that kuru was transmitted through the handling of non-human animal remains.

This does not negate the slightest possibility that prion-based diseases can spread from animals to humans, and Thomas is most informative on this point.

One final note — Evergreen students could do worse than learn everything they can about Dr. Stanley Prusiner's story. His discovery of prions in 1982 met with ridicule and rejection from the majority of the scientific community, since the prions have properties that run counter to the conventional thinking of the day. His journey from pariah status to winner of the Nobel Prize has given me great inspiration and comfort.

Greeners would do well to remember that every community has its orthodoxy, and none are immune to error.

Matt Love

War on crime

SATIRE ►

There's a war on crime. Crime has been down, according to the FBI, for several years straight, so we have to get tougher on crime. And part of that is arming our police. We trust our police. They could never do anything wrong, and they never make mistakes. So we need to give them the firepower to fight nuclear hacker terrorists! Because there's a war on crime.

Glock 40's aren't enough. I think cops need some real firepower. Like Uzi's. Who knows what reefer-mad drug-crazed junkies might do. In fact, for practice we should set up a shooting range on the soccer field. That way everyone can develop the sharpshooting skills that are necessary to dispose of a target at 600 rounds per second. Because there's a war on crime.

And due to domestic terrorism, I don't think that police cars are enough either. The police need some armor for protection. Why not use the real machinery of war? I'm talking tanks. Why bother kicking down doors when you can plow right on through? There's a war on crime! But it shouldn't stop with our police. I think everyone

should carry guns. Maybe we could make it a requirement for admittance, along with GPA and SAT scores. "Please indicate the class of weapon you own, and whether you carry a concealed weapons permit." The men can carry shotguns or holstered pistols. The women can carry nice Berettas in their bookbags. We can say, "We're a WESTERN school. Try carrying a weapon of mass destruction at any of those East coast Ivy League schools. You're SAFE here with your weapon!" Because there's a war on crime.

I want to feel the power and euphoria that comes with knowing that I could blow anyone to kingdom come whenever I like. It's my right as an American to carry a gun and it's an affront to the Constitution that I should not be allowed to have one in my own home on campus. What if some skater punks were to try to rob me? With a gun, I could deal them the death penalty. Ha! Sole judge and jury. That'll teach them to mess with me and try to steal my wallet.

Because there's a war on crime.

Robert Walker

Clean room environment

Did you know that a person at rest can shed 15-20,000 particles per minute? That's why many industries such as electronics, semiconductor, biotech, and pharmaceutical use clean rooms. A clean room is an area in which the particles are kept to a minimum. Clean rooms are classified by how many particles exist per cubic foot. For instance, a Class 10 clean room has the air inside maintained so that there are just 10 particles more than 0.5 μ (1/12,000 of an inch) wide per cubic foot. This is many times cleaner than a hospital surgery room. Clean room air can also be regulated for temperature, humidity, and pressure depending on what the clean room is being used for.

For a semiconductor manufacturer, a clean room fabrication area is maintained in order to prevent defects in the memory. It has been estimated that by the end of this decade, electrical components on silicon chips will measure less than 0.2 μ in width. When this occurs, dust particles 0.01 μ or larger will be a big concern for semiconductor manufacturers. The cost of building and maintaining clean rooms is enormous; in 1991 Motorola spent \$650 million to build a Class 1 factory in Austin, Texas. For semiconductor manufacturers, the cleaner the fabrication area is, the higher the yield of microchips and profits. The title of one article I read says it best: "Cleanliness is Next to Competitiveness."

Ironically, a year ago at Eastman Kodak Co. in Rochester, N.Y., it was discovered that clean room air filters which had been treated with a fire retardant were the cause of a defect in some memory. Single-crystal silicon is specially grown with a certain percentage of impurity to produce specific electrical characteristics; the fire retardant contained phosphorous which settled on the chips, altering their

electrical properties. Luckily the problem was discovered before the entire clean room was contaminated.

Since people can contaminate a clean room just by being in one, many manufacturers (mostly in Japan) are using robots to cut contamination and costs. The U.S., however, still depends on people to do most of the transporting of silicon wafers within

Inside the clean room, employees may not scratch their faces or expose any skin. For example, if an employee checked his or her watch, many particles would be released into the air.

the fabrication areas. This means that they must wear special clean room garments including hairnets, nose and mouth covers, booties, and gloves. Over all this goes a smock, dubbed a "bunnysuit." Only the face around the eyes is exposed, yet safety glasses are often required.

People who work in a clean room cannot have food, beverages, gum, or chewing tobacco while in the

clean room. In addition, mousse, gel, lotion, make-up, fingernail polish, perfume, and powder-based deodorant are prohibited. Inside the clean room, employees may not scratch their faces or expose any skin. For example, if an employee checked his or her watch, many particles would be released into the air. Even pens and paper are made just for clean room use. Lint-free polyester paper and special ink that does not outgas are common clean room items.

A unique property of clean room environment is that positive air pressure is maintained throughout the clean room. Air is pumped in through the ceiling and out through the floor. Even large rooms experience complete air exchange in a matter of a few seconds. The positive air pressure also allows for pass-throughs to exist between the clean room and other non-clean rooms. Normally, only one side of the pass-through window is opened at any one time. However, when the pass-through is completely opened between the two rooms, air flows out of the clean room, keeping contamination from entering.

Throughout the years, clean rooms have been the backbone of much advancement in technology. For example, it would be nearly impossible for the semiconductor industry to be as successful as it is without the use of the clean room. Computer memory manufacturers continue to want faster part types which means microchips must continue to get smaller. As microchip components shrink small particles become more of a concern. It is the clean room that makes it all possible.

Scotia Stebbins

d publish on all subjects, being

Washington State Constitution 1889

Exhibit highlights need for awareness

STAFF EDITORIAL ►

As you walked through the CAB last week, you may have noticed a group of red wooden silhouettes. These silhouettes were part of a display brought to Evergreen for Domestic Violence Awareness Month. Mary Craven, the sexual assault prevention coordinator at TESC sponsored this event. These silhouettes are in memory of 31 Washington state women who were murdered by their spouses or partners in 1995. The Silent Witness Exhibit was displayed at the State Capitol earlier this month. Its next stop is Washington D.C.

Students had varying reactions to these silhouettes. Some appeared to like them. Others did not. Though many people respected the silhouettes and were interested in their purpose, others moved them aside. This was symbolic of the treatment these women received in life. Pushed aside, ignored, and written off. In death it is our responsibility to recognize their struggle, in an ideal world to prevent this from happening to one more person.

Domestic violence is a prominent social problem in America which affects a broad spectrum of society. Domestic violence does not discriminate among race, sexual orientation, social economic status, or gender. Perpetrators and victims come from every walk of life. Domestic violence can be defined as "a pattern of assaultive and controlling behaviors that an adult or adolescent forces upon another adult, adolescent or child in their family." Alarming statistics indicate that between 22 and 35 percent of women visiting hospital emergency rooms are there due to domestic violence. The single major cause of injury to American women is battering; a figure higher than car accidents, rapes, and muggings combined.

As a result of awareness, advocacy, and education, domestic violence is recognized as a serious social problem. On average it takes a victim of domestic violence five to seven attempts before permanently leaving the situation. The worst case scenario of the maintaining a relationship with this dynamic is death. Between the years 1976 to 1985, 10,529 women were killed by their spouses. In the same years 7,888 men were killed by their spouses. Often it is only after horrific events and alarming statistics that people involve themselves in social change. What level of violence will you allow to take place in America? It is ultimately up to you, as inhabitants of this country to declare that this behavior is not acceptable. These days organizations like Safeplace, Olympia's rape relieve and domestic violence shelter are in operation to attain solutions. As a person living in this country, in the world it is your responsibility to recognize and help advocate social change. Domestic Violence Awareness Month, and the Silent Witness Exhibit are small steps toward an end of a problem of enormous proportions. Ask yourself what is engraved into the very structure of contemporary society that allows crimes such as domestic violence to take place. That is the first step to social change.

Kathryn Lewis, Interim Newsbriefs Editor
Leigh Cullen, Managing Editor
Tak Kendrick, Interim Arts and Entertainment Editor
Gary Love, Interim Features Editor, Interim Photo Editor, Guest Layout Editor
Kim Nguyen, Layout Editor
Jennifer Koogler, Editor In Chief
David Scheer, Interim Comics Editor
Amber Rack, Assistant Business Manager

Statistics came from the Washington State Coalition Against Domestic Violence

ers & Opinions

"FREEDOM OF SPEECH:

Every person may freely speak, write and print
responsible for the abuse of that right."

— Article I, Section 5, Wash

Negro Phobia

Thoughts and shit



by Vaun Monroe

In 1990, Ruth Jandrucko, a 59-year-old white woman, filed a workers' compensation claim after being mugged by a young Black male while making a customer service visit for her employer. During the attack she sustained a fractured vertebra in her back and developed what experts diagnosed as a posttraumatic stress disorder causing both physical and psychological reactions to Blacks. While Ms. Jandrucko's fracture eventually healed, her phobia towards Blacks—specifically "big, Black males"—did not. Ms. Jandrucko claimed her phobia rendered her incapable of working with African Americans; hence, she reasoned, she could not find gainful employment.

Ms. Jandrucko was awarded total disability benefits for her phobia. White women have always been taught to be afraid of Black men but now it seems they can be paid for it too. This fear of Black men is part of the fabric that is U.S. history. White men were so afraid of race mixing that they passed laws against it. (These laws did not, however, impede the sexual exploitation of Black women by white

threat of personal power being gained by some Blacks in the post Civil War era.

Some of the tension was alleviated by segregation. With Blacks and whites having limited access to each other, the potential for conflict was reduced. The civil rights movement temporarily reduced segregation and helped launch another movement that appears to have had more staying power—the feminist movement. Women have slowly made gains in the acquisition of power in this and other countries. While white feminists have recently made more of an attempt to reach out to women of color, attacks against men of color have continued unabated.

The language of the attacks is often coded with words like "macho" and "Third World." While some of the behavior identified is harmful sometimes there is room for leeway between those who share a culture or understand cultural values, truths and myths. For instance in the African-American community there is a type of playful banter that goes back and forth between men and women called "signifying." If you are familiar with this form of communication it can be amusing. If you are not it can be perceived as sexual harassment.

I have for some time now wondered about those aspects of academic feminism that support racism, imperialism and white supremacy. To question these aspects often earns you the immediate contempt (in the form of being branded "sexist") of some so-called "feminists" but if the issues of feminism are concerned with women's power then let me say that white women have always held power over Black men,

The power of life or death. As a Black man I feel I have the right to question the way the power is wielded and question if biases are possibly harming Black men and other men of color. I think its high time white women started asking themselves some difficult questions.

In the book *The Social Construction of Whiteness: White Women, Race Matters*, author Ruth

position last week after being charged with 20 violations of the military's sexual harassment policy. His six accusers are *all white women*. This is not the only time the Army, which is 33 percent African-American, has had these kinds of difficulty between Black men and white women. A recent Aberdeen case had the same charges with the same racial background for accusers and accused.

Evergreen has not been immune from difficulties between men of color and white women. Several men of color have been dismissed from school after being accused of sexual harassment by white women. Turns out not all of them were guilty either.

Black men and white women together is still American society's greatest taboo. When was the last time you saw a Black man involved with a white woman in a movie? Most of you will say "Jungle Fever." What if I asked you to name another? Most of you will scratch your heads in befuddlement. Movies don't show Black men with white women because most of America doesn't want to see it.

"I mean, it's bad to be a slut, anyway. But [for

"I mean, it's bad to be a slut, anyway. But [for a white woman] ... to have sex with a Black man is like being the worst slut in the world."

—Ruth Frankenberg
author of *The Social Construction of Whiteness: White Women, Race Matters*

a white woman] ... to have sex with a Black man is like being the worst slut in the world."

The above is a quote from Frankenberg's book, chapter four titled "Race, Sex, and Intimacy 1: Mapping a Discourse." It is the response of one of the women interviewed in the book. She is probably not alone in her feelings. The image of the Black man as subhuman sexual

predator is powerful, pernicious and pervasive—some of the women interviewed held this belief despite the fact that they knew no Black men personally. How much of the interactions between Black men and white women are seen through this prism by white women? Its another good question to ask. No need

the sexual exploitation of black women by white men). Often Black men merely suspected of a sexual advance toward a white woman could look forward to being on the wrong end of a rope. What is not discussed is exactly who was the target of the lynchings. Often, the target of lynchings were economically and/or politically successful Black men. Buried in a discourse that revolved around the already incendiary issue of interracial sex was the real

Whiteness: White Women, Race Matters, author Ruth Frankenberg asks and answers some very difficult questions. Among them is, do white feminist abuse the power they have obtained when interacting with men of color? It is a good question for white women to ask themselves. When a mere charge of sexual harassment can destroy a career, it is not a charge to be made lightly.

Gene McKinney, a 29-year veteran and the armed services top enlisted man, was dismissed from his

to get offended either. Any movement worth supporting can withstand introspection.

"Power is the ability to define reality and have other people respond to it as if it were their own."

Marimba Ani

Peace.vkm

How to submit

Please bring or address all responses or other forms of commentary to the Cooper Point Journal office in CAB 316. The deadline is at 1 p.m. on Monday for that week's edition. The word limit for responses is 450 words; for commentary it's 600 words.

The CPJ wants to use as much space as possible on these pages for letters and opinions. Therefore, in practice, we have allowed contributors to exceed the word limit when space is available. When space is limited, the submissions are prioritized according to when the CPJ gets them. Priority is always given to Evergreen students.

Please note: the CPJ does not check its e-mail daily; the arrival of e-mailed letters may be delayed and may cause the letter to be held until the following issue. We will accept typed or handwritten submissions but those provided on disk are greatly appreciated.

All submissions must have the author's name and a phone number.

Arts

“Reality is for people who can’t handle drugs.”

— Men’s bathroom wall, basement of Lab I

Entertainment

Olympia Film Festival

The cinema carnival comes to Oly

by John F. Evans
A&E staff writer

Sitting in the official headquarters of the 14th Annual Olympia Film Festival (OFF), I was not awed by rows of operators wheeling and dealing on the telephone or blown away by the amount of money, prestige, and stardom being funneled into Olympia for nine days. Instead, I sat with three of the festival’s key coordinators in a tiny room roughly the size of a closet as they worked on one outdated Macintosh computer and occasionally answered the single telephone. These were not big shot mucky-mucks, either; two had graduated from Evergreen in the last three years and the third was a full-time staff person at the college.

I was not overwhelmed by the grandeur of my surroundings.

The Olympia Film Festival is as independent as it gets. The ultimate renegade festival, it is 90 percent volunteer run with a shoestring budget and a “get things done by the skin of your teeth” spirit. In the time that I worked with the festival organizers (I helped edit the festival program) I found them to be enthusiastic and resourceful, but seldom terribly efficient. What makes it work is their palpable love of film and the pleasure they take in getting great movies and interesting people to come to Olympia for your enjoyment.

The festival is co-directed by Holly House and Samuel Pixley. An Evergreen grad with a degree in film, Holly couldn’t turn down the opportunity to do something in the medium she loves. Being co-director of a big city film festival might mean lofty supervision of others’ toils, but here Holly does just as much of the scut work as anyone else (she’s just responsible for more of it). She does get to carry a cellular phone on loan from AT&T, the festival’s sole corporate sponsor, though she seems embarrassed by it.

“We’re trying to get up to speed with the technology,” she explained, hastening to add that the festival will never be called the Bigfoot Outdoor Olympia Film Festival or any other corporate name. Indeed, it is the small local businesses that support the festival with donations and services, receiving little more in return than an ad in the program and a place in the nightly slide show projected on the wall across the street from the Capitol Theater.

Another concession to progress is the theater’s new Dolby stereo sound system, paid for primarily by benefit screenings and an auction. It’s not THX Digital Sound or

See FESTIVAL continued on page 13

Viva! Film



Illustration and ¡Viva Film! logo courtesy Olympia Film Festival

The 14th Annual Olympia Film Festival

Where: The Capitol Theater and Midnight Sun

When: Oct. 17 to 26

Full Pass: \$55 (requires Olympia Film Society membership)

Partial Pass: \$15 (requires OFS membership)

Single Tickets: Members- \$5, Non-Members- \$7

Opening Night: Members- \$7, Non-Members- \$9

Fringe Events: Members- \$3; Non-Members- \$5

All-Freakin’ Night: Members \$5,

Non-Members- \$7

If you want to pick up tickets in advance (not a bad idea, either) you can get them at Rainy Day Records on the Oly’s Westside and Video I on the Eastside.

A thumbnail sketch

The festival lineup

by John F. Evans
A&E staff writer

The 14th incarnation of the Olympia Film Festival is loaded with attractions, but here are a few of the particularly special offerings you won't want to miss.

Opening night, tomorrow, is a basically a huge Salsa street party, with the Everchanging Festival of the Now (an Olympia circus troupe), free Mambo lessons and the live Afro-Cuban sounds of *Los Calaveras*. All that action gets going at 6 p.m. and then at 8:30 p.m., the first movie of the festival, *The House of Yes*, hits the screen. It's supposed to be great, and the picture's cinematographer, Michael Spiller, will be on hand to field questions.

Saturday at 7:30 p.m. is *Oly Only!* a program of shorts produced entirely in Olympia. Greeners past and present are among the talented filmmakers whose work is displayed in this showcase of home-grown cinema.

My favorite movie event of the entire year starts at midnight, Saturday: ALL FREAKIN' NIGHT! Nothing but weird horror movies until way past dawn! It's always a crazy, party type atmosphere, but the real fun is enjoying some obscure, intense freak-shows until you pass out. Last year I made it to the 8:30am mark before lurching home on a clear, crisp Sunday



Photo courtesy of Miramax

Using a combination of documentary footage, TV news broadcasts and fictional narrative, *Welcome to Sarajevo* recreates the siege of Sarajevo in the finale of this year's festival. *Welcome to Sarajevo* will be shown on Oct. 27 at 9:30 p.m. at the Capitol Theater.

morning to crash into bed until about three in the afternoon.

Sunday night at 7:30 p.m., Heather Johnston and Gordon Eriksen host a screening of *Lena's Dreams*, their searing new film about a woman trying to cut it as a professional actress. Stay for Incredibly Strange Wrestling, live. Apparently, Mexican wrestlers complete with masks are going to go toe to toe in an actual ring.

Tuesday, Oct. 21 at 5:15 p.m. is *Cine-X-Perimental* a showcase of national indie shorts, films and videos from around the country. After *The Best of the International Student Animation Festival of Ottawa* comes *The President's Analyst*, a brilliant comedy from the '60s.

Wednesday, Oct. 22, features a top notch collection of short films from around the world, an eclectic and innovative field carefully chosen to meet your approval. The parade of shorts begin at 9:45 a.m. and concludes in a Thursday evening block starting at 7:00 p.m.

Thursday, Oct. 23 at 9:30 p.m. is the powerful, discussion-inciting *Follow Me Home*, presented by its writer/director Peter Bratt. At midnight you should go

to the Minty, a jazz speakeasy, which is a step back in time to the glory days of film noir.

Friday night, Oct. 24, Adrienne Shelly (yes, the one who made her name in those great Hal Hartley movies) unveils her OWN film, *Sudden Manhattan*, which is sure to be a delight. Come to the theater at 5:15 p.m. and see Adrienne in person!

Later in the night, filmmaker Noam Gonick presents his film about Guy Maddin, and Guy Maddin presents his film about Ice Nymphs. *Waiting For Twilight* and *Twilight of the Ice Nymphs* are here, with their creators, and you won't want to miss it.

Saturday, Oct. 25, at 7:30 p.m. the Brothers Quay appear live at the Capitol Theater. Come see the brilliant animators you love and enjoy a bunch of their films. Later, Guy Maddin reappears with his unique *Tales From the Gimli Hospital*.

Sunday evening you get more Quay Brothers and at 9:30 p.m., the festival's compelling film finale: *Welcome to Sarajevo*. Things aren't quite over yet, however, because a woman who makes plaster casts of rock star's penises appears live at midnight, presumably with some of her work in ah, hand. What a hard way to end the festival.

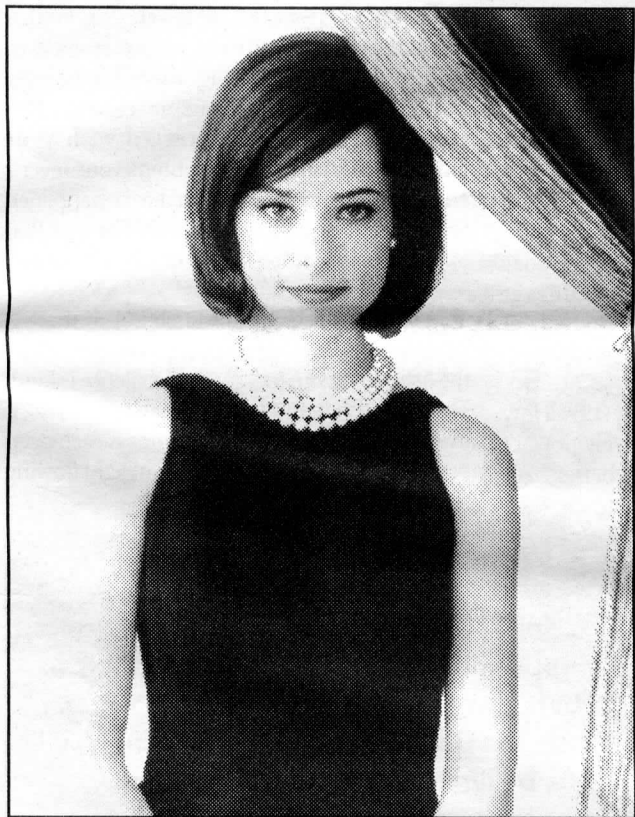


Photo courtesy of Miramax

Parker Posey stars in *House of Yes*, this year's opening film. *House of Yes* will be shown at 8:30 p.m. tomorrow at the Capitol Theater.

FESTIVAL

continued from page 12

anything, but the movies will sound better.

The festivities may not be called the Evergreen Film Festival, but it almost could be; there is a strong connection to our school in the volunteers, programming, and philosophy.

"We draw a lot from the creativity at Evergreen," Holly told me, describing the festival events that would feature the work of Evergreen students past and present: *Oly Only* and *Cine-X-Perimental*. Many of the people volunteering their time and energies did time at the Green.

Another key figure in making the festival happen is the "programmer." A programmer (and there are many) is someone who screens films, listens to the buzz and then brings the best offerings to the table. Usually this involves contacting distributors, studios and filmmakers; essentially, whoever has the power to say "Yes, I'd

"It's the people's film festival. It's a great place to come and see something out of the norm, not your traditional love story playing at Lacey Cinemas."

— Holly House, Olympia Film Festival co-director

like our film to show at your festival."

I sat down with short film programmers Kevin Bunce and Sean Savage, who told me that the OFF competes with many other film festivals in the Northwest during the same season.

"It works to our detriment when it comes to getting high-profile features," Kevin lamented. "There are several other independently focused festivals that take place at the same time."

Programmer Billy Blue prefers not to deal with the bigger distributors, anyway, saying that they tend to get jaded from a constant inundation of calls from festival people and film societies.

"Before they'll talk to you they ask, 'Who are you? What have you done?'" said

Billy. He said the odds of obtaining a film are better if one gets in touch with the filmmakers themselves, because they tend to be less "cocky." The festival can afford to pay virtually nothing to book a film so it's necessary for programmers to negotiate.

"We try and find edgy, interesting work," Kevin said of the approach he and Sean use in programming short subjects. They booked shorts recommended from the Chicago Underground Film Festival, France, the UK, Hungary, Lebanon, and Germany.

How is the OFF most different from other film festivals?

"The spirit of independent film is alive here," said Billy. The programmers look hard for truly experimental works,

not faux independent films like *The English Patient*, but stuff that is legitimately off the beaten track.

Holly said, "It's the people's film festival. It's a great place to come and see something out of the norm, not your traditional love story playing at Lacey Cinemas."

Filmmakers seem to like coming to this festival; over the years it has hosted some impressive panel discussions with accomplished artists in attendance. This year should be no different, with the Quay Brothers, Guy Maddin, Adrienne Shelly and cinematographer Michael Spiller among the luminaries coming to Oly.

Kevin told me about a short called *Room 103*, a Kafkaesque exercise in paranoia shot in Prague, Czechoslovakia. When its L.A. based filmmaker received a query letter from the programmers, he responded, "I may be able to attend and screen the film in person—your festival inspired me to make this film!" An L.A. filmmaker was inspired by the Olympia Film Festival to shoot a film in Prague. That's the festival for you.

Old Djinn Swag

A richly bizarre mixture of rock, hip-hop and jazz

by Tak Kendrick
A&E Tsar

Old Djinn Swag is an oddity. One that probably couldn't have been spawned anywhere but Olympia. According to their PR flyer, "drawing on influences that range from hip-hop to rock to jazz this trio hopes to move peoples minds as well as their feet." This isn't an erroneous statement. Judging from their latest release, *True Indeed* their sound is a richly bizarre mixture of new style Beastie Boys, combined with a heavily thumping drum beat, didjeridoo and samplers, shaken, not stirred. The lyrics aren't particularly deep, but fun. Be sure to listen closely for Oly sites.

Old Djinn Swag has been playing their around Olympia since 1995 and recently completed a tour that extended to Senora, California. Their label, Braincase, is set up not only to help themselves, but also to help other local musicians develop, record and release their music. They are also working closely with the local City Limits collective. This is a group set up to help musicians connect, communicate

True Indeed comes with a 'zine featuring notes, dedications, and mad ravings. The album can be picked up at local independant record stores and at their performances.

and share equipment and knowledge. The ultimate goal of City Limits is to take control of music back from the large music corporations and return the art form to the musicians themselves.

True Indeed comes with a 'zine featuring notes, dedications, and mad ravings. The album can be picked up at local independant record stores and at their performances.

For more information on Old Djinn Swag, contact Adrian Martinez or Giles O'Dell at 786-0838. If you are interested in the City Limits collective, contact Heidi at 786-0783.



Photo courtesy Braincase Collective

Old Djinn Swag has been bringing their own style music to Olympia since 1995.

Aries: {March 21 to April 19} The first. They say Aries always like to be the first. Well, the truth of early accomplishment can be very fulfilling. And so can the amount of time. Like connecting a string to all stars in the sky, planting them. The absolute and eternal plane of spiritual existence awaits the discovery.

Taurus: {April 20 to May 20} If the bull and the rest of the gang were all in the ring, who would have the red cape? The truth, my brothers and sisters, the truth. In an apple orchard, the tenth apple tree began the climb towards rhyme and reason.

Gemini: {May 21 to June 20} Each rain drop dancing from puddle to puddle, all the diamonds in the world. That sensationally amazing view of being alive, what mysteries are still yet to be solved? *Looking* for something, eh? Search within the self.

Cancer: {June 21 to July 22} Just a moment ago there was, well maybe it was a real long time ago. Your inner spirit in touch with the tides and oceans keeps the love warm and never a candle's flame too soft, or a smile so kind to define your truth in unconditional love.

Leo: {July 23 to Aug. 22} The luck is unbelievable. How did you go unnoticed? We all saw you laughing under that moon, between



Astrologically Speaking

by Mason James McGraw



the rain and glittering sunshine. We knew, you told us, you wildcat you. Like Bob said, "Iron, like a lion, in Zion."

Virgo: {Aug. 23 to Sept. 22} Vavava-vooom. Going to the show? I never knew!!! Where did you get those outfits? Style? Is it even an issue? With your grace and charming smile that cares so much, what sweetness; Now what about that project? Now is the perfect time to get the ball rolling.

Libra: {Sept. 23 to Oct. 22} When your right in the middle of the energy triangle, or glancing at the auras around you from the peak, your sense of guidance should be correct. Trust in yourself, and the others, with an element of patience and love, understanding will begin to become realization. The wheel of life turns slowly, and when you spin it, the melody is rock steady.

Scorpio: {Oct. 23 to Nov. 21} There is a man who is a very kind person who is a Scorpio. I believe in your love. Love it!!! Love the earth and feel the blessing sensation of being a living soul in the spiritual plane, an eternal spirit. The soul

does not simply manifest in your mind and your body, it is you.


Sagittarius: {Nov. 22 to Dec. 21} The beginning of a new relationship turns out to be successful in complete understanding of how much fun you can really have with patience. Take it slow, of course. Time goes on forever. How many mosquitos does it take to screw in a light bulb? Two, except nobody knows how they got in there!!!!

Capricorn: {Dec. 22 to Jan. 19} How did you ever grow to be such a lovely flower? Your earth sign translates an even better plan then ever imagined. The source from the soul,

the self, proves to have an even better grasp on the completion of an incredibly marvelous creation.

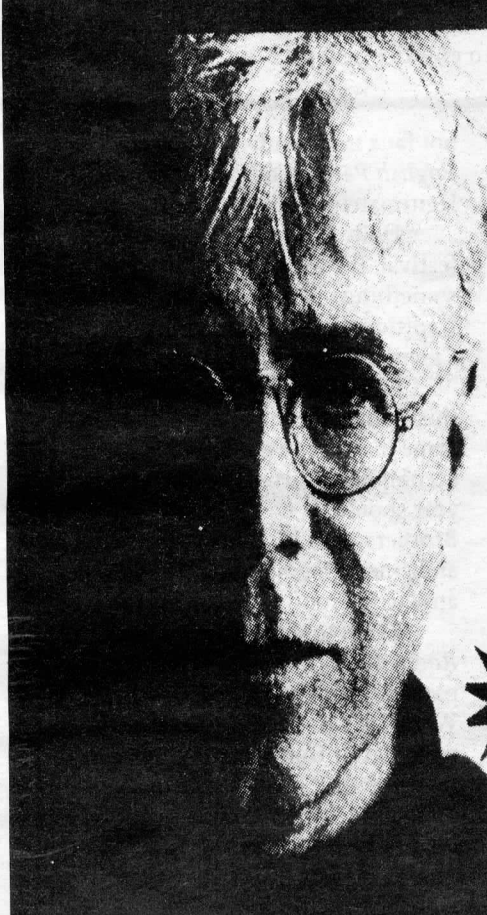
Aquarius: {Jan. 20 to Feb. 18} Well, it seemed at the beginning of the session of processing understanding, there might have been some knowledge misplacement. Not every day someone is greeted with your fantastic charisma that brightens your lover's enlightening attraction. What ever happened to that book you were reading? The one that opened your heart to the light within yourself.

Pisces: {Feb. 19 to March 20} If there is anything, you have something. What is it that the fish can't swim in? Even your silence is loud. The other fish in the sea. Tropical fish, ice fish, a live living soul amongst all happiness each deep breath of purifying spirit, a sense of light flowing rhythm through the senses.



Only 20 more days left until the release of *Spice World*, the latest record from the groundbreaking band The Spice Girls, a band (we all hope) destined to be bigger than The Beatles. Quantities (hopefully) will be limited, so start saving up now.

— This has been another helpful reminder from the people who brought you *Vanilla Ice: The last years*



KCS Welcomes
Bruce Cockburn
Sat, Nov 8
@8:00pm
Capitol Theater
Olympia

on sale now

Tickets available @
Ticketmaster
206.628.0888
Rainy Day Records
& Positively 4th St.

Supplies for all your creative college needs!

- Acrylic Paints
- Airbrushes
- Brushes
- Canvas
- Charcoal
- Clays and glazes
- Exotic Papers
- Fabric Paints
- Glues
- Gold Leafing
- Inks
- Marbling
- Markers
- Origami
- Pastels
- Pencils
- Pens
- Stencils
- Watercolors
- And much more!

Olympia Potters & Artists Supply Inc.

The Biggest Little Art Store Around

10% Student Discount

10-7 MON-THUR
10-6 FRI
10-5 SAT & SUN

Welcome Back Geoducks

943-5332
1822 Harrison Ave

ARTS AND ENTERTAINMENT

Gang Related:

Relating the shades of crooked police officers covering up the death of a DEA agent

by Dan Scholz
A&E contributing writer

Hmmm, a gangster film featuring Tupac Shakur in his final role, coupled with a score composed by the drummer for the Grateful Dead? — I had to catch this one.

Contrary to its title, however, this movie has practically nothing to do with gangs. Instead, it is the story of two crooked detectives (James Belushi and Tupac) who routinely whack drug dealers in order to supplement the meager income they receive from the police department. Things go sour, though when they gun down an undercover DEA agent played by Kool Moe Dee, thus triggering a

downward spiral involving numerous cover-ups, betrayal and murder.

After several ridiculous attempts to frame somebody for the agent's death, the detectives settle for a catatonically drunk homeless man with so much facial hair that he makes Jerry Garcia look like Michael J. Fox. In an inebriated stupor, the poor schlep confesses to the slaying of the DEA agent, and Belushi and Shakur think they've got the whole thing wrapped up.

Such is not the case. In fact, the two detectives sink lower and lower in their attempts to cover their sloppy tracks. Rodriguez (Shakur) is the cop with a conscience, constantly in a state of guilt over

what he and DiVinci (Belushi) have done and what they have to do in order to avoid getting nailed. Belushi, on the other hand, could give two shits. He is completely without scruples, always rationalizing the theft and murder that he and his partner carry out.

I liked the fact that although Belushi and Shakur were the main characters in the movie, they were by no means heroes. Their sleazy shenanigans are even laughable at times, adding an element of much-needed humor to the film. Tupac's role makes his death seem all the more tragic. Although his performance is by no means stellar, you get the idea that this was a man on his way up — that in addition to his accomplishments

in hip-hop, he also had a bright career ahead of him in Hollywood.

Gang Related also has a fine supporting cast, including James Earl Jones, Dennis Quaid, David Paymer and Lela Rochon, all of whom are pretty solid. There are enough plot twists to make *Gang Related* a fairly enjoyable film, and the rhythmic score by Mickey Hart gives the movie a stylish edge that is absent in most movies of this genre.

All in all it was a good show, but judging from the fact there were only about five or six others in the theater on an overcast Sunday afternoon, *Gang Related* probably won't enjoy the commercial success it deserves. Then again, this is Lacey.

OBITUARY ▶

A tribute to John Denver

by Dan Scholz
A&E contributing writer

At approximately 5:30 p.m. last Sunday, an experimental ultralite plane crashed somewhere in Monterey Bay, killing its sole passenger, John Deutchendorf Jr. — better known to the world as John Denver.

For well over 30 years, Denver has been performing top of the line folk music for audiences here in the United States and abroad. After spending his childhood in rural Colorado, Denver began his career in the 1960s, playing various clubs in Los Angeles. The first band he sang for was The Mitchell True Indeed comes

with a 'zine featuring notes, dedications, and mad ravings. The album can be picked up at local independent record stores and at their performances. Trio, whom he was involved with for two years. It was around this time that he wrote his first big hit, "Leaving on a Jet Plane," which was performed by Peter, Paul and Mary.

Since going solo, Denver released many albums, both live and studio-recorded. He is best known for hits such as "Take Me Home, Country Roads," "Rocky Mountain High," "Sunshine on My Shoulders" and "Thank God I'm a Country Boy," amongst others. Other accomplishments include 14 gold albums and eight platinum albums. In addition to this, Denver is one of the

top five recording artists in the sales history of the music industry.

Denver helped ease global tensions with his unique style of folk music. He was invited to tour the Soviet Union in 1984, several years before the collapse of Communism in that country. In 1993, he became the first Western artist to do a tour of mainland China, where he is immensely popular. He has also been on the forefront of the environmental movement, spearheading organizations like Plant-It 2000 and doing work with the National Wildlife Federation. Denver has been most vocal regarding the proposed oil exploration of the Arctic National Wildlife Refuge in Alaska, and his work on that issue has

been met with gratitude by those who wish to preserve the endangered ecosystem.

Denver also pursued a career in acting, with most film buffs familiar with his starring role in *Oh God!* alongside George Burns. He also stepped in front of the camera for other big screen and made for TV movies such as *Foxfire*, *Walking Thunder* and most recently *Higher Ground* (1993).

Next week in A&E:

- Fall Movie preview
- Upcoming speakers
- Reviews: *Playing God* and *I Know What You Did Last Summer*.
- More fun packed excitement than you care to believe.

To submit to A&E, drop off your submissions to the CPJ, CAB316 by Monday at 4 p.m.

If you would like to see something covered in A&E, call Tak, the interim editor, at x6213 or just stop by.

GROOVY MERLES
FOR YOUR GROOVY THREADS
FOR MENS 50% OFF
FOR BLUES 10% OFF THIS AD

SECONDHAND & FAR-OUT APPAREL
118 STATE AVE. ALWAYS BUYING.

Darby's Cafe
ph. 357-6229

Open Tues-Sun
8 am - 2 pm
Fri dinners
5 pm - 8 pm
sat & sun
breakfast only

"best breakfast in town"

THOUSAND CRANES FUTONS AND FURNITURE

Fine, locally crafted furniture... planet-friendly design solutions... certified organic futons...

416 S. CAPITOL WAY • OLYMPIA, WA
OPEN 7 DAYS A WEEK • (360) 357-8464

Rainy Day & Co.
RECORD GO

Excellent Selection in the Hard To Find!

Music

- New and Used CDs, Vinyl, Tapes, Independent Releases

Movies

- Olympia's Largest Selection of Foreign and Independent films
- A Section Devoted to Great Directors like Bergman, Wenders, Hartley, and more!
- Action from Jackie Chan, John Woo, and Chow-Yun Fat
- Monday Night Special: Rent 2 or More Movies and they're 98 cents apiece!

Special Orders Welcome

357-4755
In The WESTSIDE CENTER
At DIVISION & HARRISON
MON - SAT 10-8
SUN 12-5 PM

ACADEMIC PRICES!!

5 YR WARRANTY CPU RAM 28" NI SVGA MONITOR HARD DRIVE CD-ROM MODEM SPEAKERS SOUND CARD VIDEO CARD	K5-133MHz Workstation AMD K5-133MHZ 16MB EDO 14"	K6-233MHz "BOMB" AMD K6-233MHZ 64MB SDRAM 17"	WOW!! \$80/MO \$2.210
	1.2GB 12X 33.6K AMPLIFIED 16 BIT 1MB PCI	4.0GB 24X 56K IOMEGA 100MB ZIP INCLUDED LABTEC SHIELDED 3010 SOUND BLASTER 64 AWE W/ASP 4MB DIAMOND STEALTH 3-D Video	

WORKSTATIONS INCLUDE 3.5" FLOPPY DRIVE. K5-133 SYSTEM INCLUDES CASE (MINI-TOWER CASE, K6-233 BOMB INCLUDES MID-TOWER CASE), A 104 WINDOWS '95 KEYBOARD, MICROSOFT COMPATIBLE MOUSE, AND MOUSE & KEYBOARD PADS.

BAREBONE COMPUTER P100+MHz, 16MB EDO RAM, 1.2GB HD, \$385
System Includes: Case, Motherboard, RAM, CPU, Fan, 1.44" FD, HD, 1MB PCI Video Card, 1 YEAR WARRANTY

AMOS COMPUTERS
Since 1991 MORE THAN JUST A COMPUTER STORE!

South Sound Mall 456.3090
Target Place Plaza 786.5112
HOURS: MON-FRI: 10AM-7PM, SAT: 11AM-6PM, SUN: 12PM-5PM

ACADEMIC SPECIALS*
FRONT PAGE '97 \$68
ENCARTA '97 \$67
OFFICE PRO '97 W/ BOOKSHELF \$199
WINDOWS NT WORKSTATION \$149

AMOS COMPUTERS PROUDLY EMPLOYS A+ CERTIFIED TECHNICIANS

AST COMPUTER, COMPAQ, Authorized Reseller and Service Provider

*PRICES REFLECT 3% CASH DISCOUNT. EXP. OCTOBER 24, 1997 ONLY. SEE STORE FOR ACADEMIC GUIDELINES. LIMITED QUANTITY. PICTURE USE FOR DISPLAY ONLY. ACTUAL APPEARANCE MAY VARY FROM SYSTEM TO SYSTEM. PRICES SUBJECT TO CHANGE WITHOUT NOTICE. ALL LOGOS ARE THE RIGHTS OF THEIR RESPECTED OWNERS. ALL MANUFACTURER'S WARRANTIES APPLY. 971510.

SPACE AVAILABLE

Small band of student journalists seeking same. Writers, photographers, artists needed. No experience required. Must be photographer friendly. Imaginary pets and cut-out representations of pets allowed with no deposit. No live animals please. Nice office space/work environment with semi-private smoking porch. Apply in the Cooper Point Journal office, CAB 316 or call x6213.



**The Cooper Point Journal
All we need is you.**

The "Official" CPJ Calendar

Thursday, October 16

Jaune Quick-to-See Smith presents a lecture and slide presentation of her drawings in the Fourth Floor Gallery of the Library building from 6:30 to 7:30 p.m. A reception will follow.

The Future of Salmon in Our Community shows 6:30 to 9:30 p.m. in the Olympia Community Center.

Friday, October 17

Joules Graves will perform at the CD release party in the Longhouse from 8 to 11:30 p.m. TESC students \$5, General Admission \$9 at the door.

OndeKOza will lead you through an evening of Japanese taiko with their drums and flutes and strings at the Washington Center at 7:30 p.m. Tickets are \$19-24.

Saturday, October 18

All Freakin' Night at the Capitol Theater. Everything from a "schizophrenic with a compulsive reading disorder" to a parasite that is sexually transmitted and "has an aphrodisiac effect on its host." Bring pillows and lots of caffeine.

Salsa dance at El Perico Restaurant (111 Capitol Way N) to benefit Sni Kehaa, coop for the Chatino community of Mexico. Mexican food buffet from 11 a.m. to 4 p.m. \$7 adults, \$3.50 children (5-12). The dance begins at 9 p.m. \$3 donation requested.

Sunday, October 19

Amanda Rodas, Guatemalan human rights activist, speaks on the implementation of the Guatemalan Peace Accords. 3 p.m. in the Thurston County Courthouse, Building #1.

Candace Gingrich (Newt's half-sister) speaks about Initiative 677 at Holiday Inn Select at 12:30 p.m. For extra info, contact Rich Plouts at 456-6754.

Monday, October 20

Study Abroad Workshops from 10 to 11:30 a.m. in Library 2101.

PCUN solidarity meeting in CAB 315 at 4 p.m. to discuss Norpac boycott & solidarity with Oregon farm workers.

Thurston - Santo Tomas sister county association presents slides and stories about Nigaragua at First United Methodist Church. Potluck at 6 p.m. & presentations by TESC students at 7 p.m.

Tuesday, October 21

A **blood drive**, sponsored by Puget Sound Blood Program will drain students from 10 to 12:30 p.m. and 1:15 - 4 p.m.

Wednesday, October 22

Student forum on Curriculum in the Longhouse from 1 - 3:30 p.m.

Write **what you did** today here:

The "Official" CPJ Weekly Meeting List

Mondays . . . CISPES meeting at 3 p.m. in Library 2204.
Latin American Solidarity Organization (LASO) at noon in CAB 320.
****Can't forget to submit my weekly meetings to the CPJ!!!!

Tuesdays. . . Evergreen Students for Christ in library 2116 @ 8 p.m.
EQA bisexual group in CAB 314 at 4 p.m.

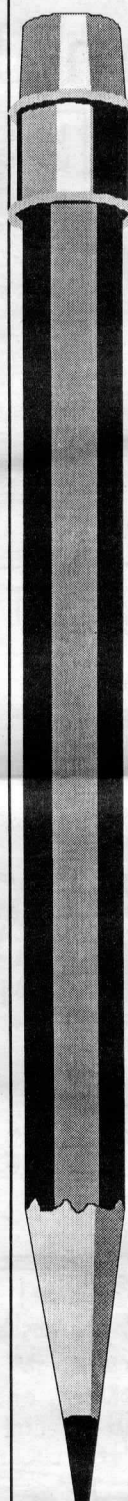
Wednesdays. . . LOTS TO DO!!!
EPIC meeting in CAB 110 at 1:30 p.m.
Amnesty International meets in CAB 315 from 5 to 6 p.m.
Umoja meets from 1:30 to 2 p.m. in CAB 315.
Homeopathy study group meets from 3:30 to 5 p.m. in Lab I 1051.
The Brown Bag Christian Fellowship is from noon to 1 p.m. in Library 2221.

Thursdays. . . Recover from Wednesday until the Students for a free Tibet meet from 5 to 6 p.m. in CAB 315.
EQA Coming Out Discussion Group from 5-7 p.m. in the Counseling Center, first floor of the Seminar building.
Evergreen Animal Rights Network (EARN) meets at 6 p.m. in CAB 320.
M.E.Ch.A meets in CAB 315 at 3:30 p.m.

Fridays. . . Finish recovering from Wednesday and begin recovering from Thursday.

Saturdays. . . . Evergreen Students for Petting Cats (ESPC) meet on the grass in Cooper's Glen.

Sundays. . . Evergreen Students for Sleeping Late (ESSL) meet in their respective dorm rooms from 4 a.m. to 3:30 p.m.



THE FIRE SIDE BOOKSTORE

HOURS
Monday - Saturday 10-6
Sunday 11-4

Locally owned Independent Bookseller A personal selection of literature, philosophy, religion, nature, women's and children's books. SPECIAL ORDERS are welcome.



116 East Legion Way Olympia, WA 98501
Across from Sylvester Park, Downtown Olympia
(360) 352-4006

Millennium Astrology

- YZSTAR Counseling
- Yanah G., Astrologer
- Hypnotherapist
- NLP Practitioner
- Classes and Tutoring

Feeling like a Curmudgeon?
Wonder for what purpose you are here?

Experience first hand your wisdom teachers speaking through the language of symbols; the ancient symbols of the art and science of astrology. Find guidance for life direction, cycles, personal empowerment, and romance.



786-8838
203 E. 4th Ave #218

SERVICES / LESSONS

SCAFISSO

TUTORING ASSISTANCE IN WRITING, organizing and fine tuning your papers. Let me help you express your thoughts with precision, clarity, and style. Call Julia at 786-1434. Rates negotiable.

Deadline 3 p.m. Monday.
Student Rate is just \$2.00/30 words. Contact Keith Weaver for more rate info.
Phone (360) 866-6000 x6054 or stop by the CPJ, CAB 316.

Comics

DR. NIHL'S TALES OF ATOMIC DEATH



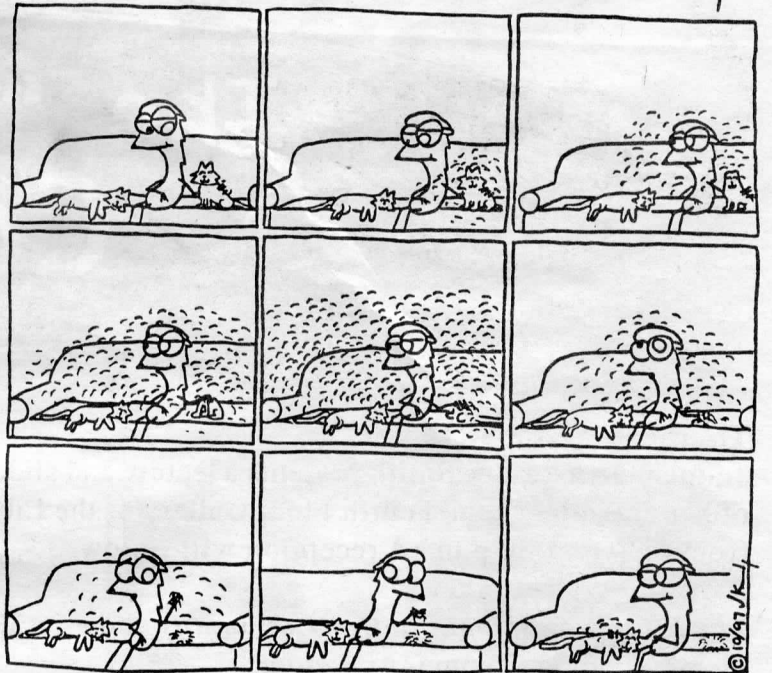
by Lee O'Connor



Disclaimer: these comics pages are plural — that is we have two pages of drawings, some funny. That also means there was double the chance for offensive material to slip by our leary editorial staff. To parents we advise the following steps: read the page thoroughly, then write your congressman and ask that they outlaw certain types of speech. We suggest the following Constitutional wording: "bad speech." But really, please keep this page from children unless you feel they need to learn about life real young. This section is meant for a mature audience; I call your attention to Hose Head. Oh yeah, this is Josh's fourth year drawing his comic — way to go Josh! Also, please note that there are still ways to get more art on these pages (HINT). Finally, a special thank you to U. S. President Bill Clinton who funded this week's section with calls from within the White House. As always, your comics editor — David Scheer.

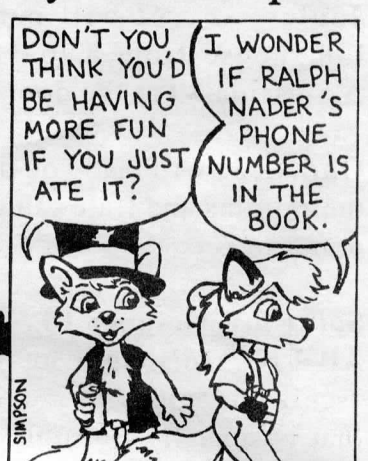
Hose-Head

Josh Knisely



ozy & millie

by david simpson



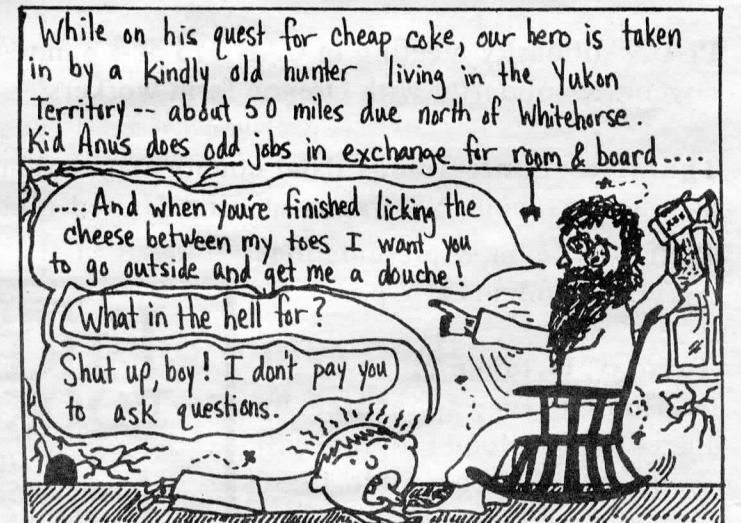
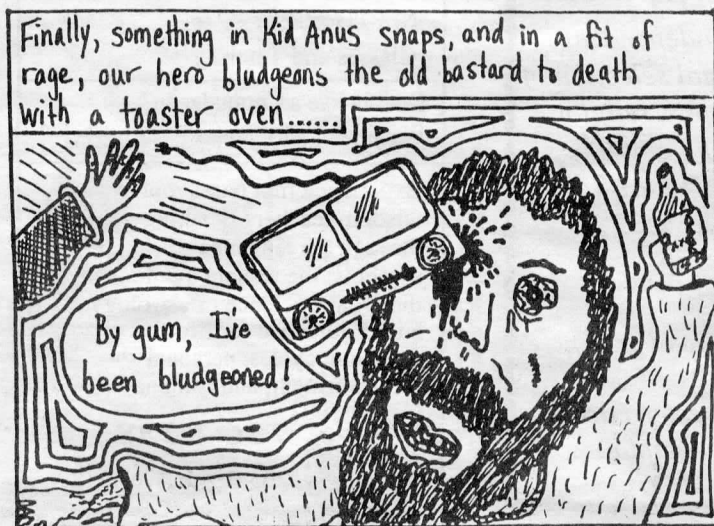
Leepin Ladybug woo hoo!



C. Bell Fowler 97

Kid Anus

by Dan-O



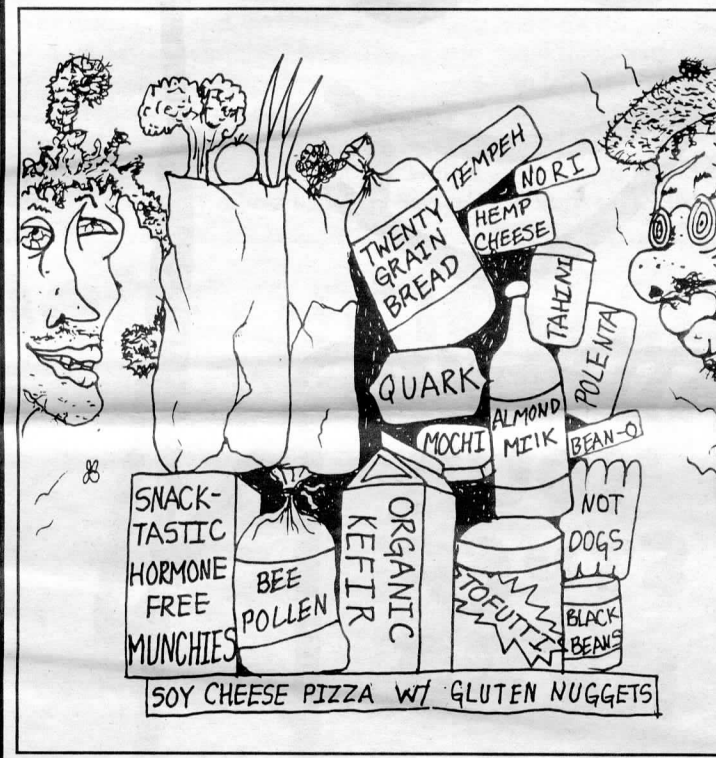
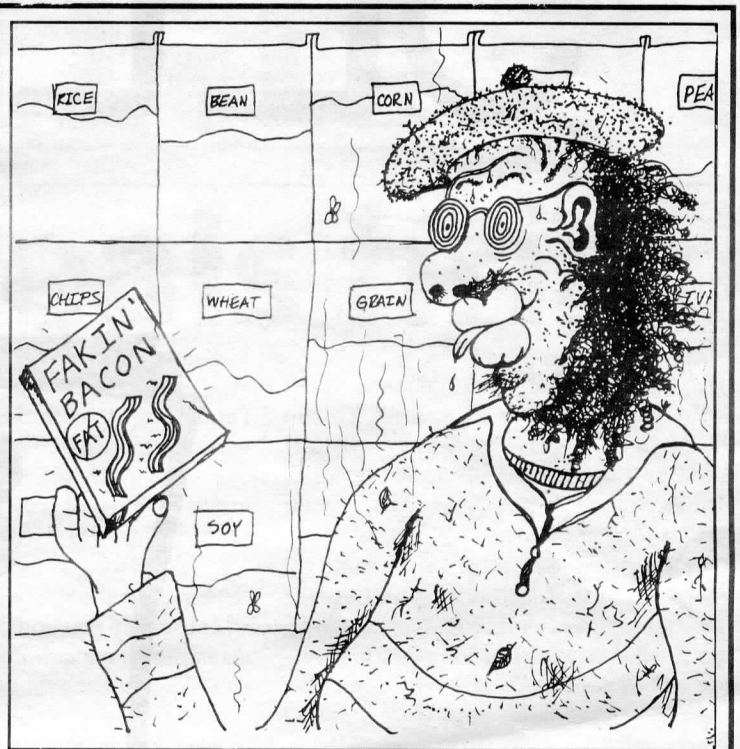
e-mail comments to leeocon@msn.com

Comics

(Cont.)

Trustafarian

by Chris Story and Phil Howard



SAL JOKE YEAR 3 BY SAL (OF COURSE.)



SEE PAGE



Please bring your artwork, poetry, photos or other stuff to CAB 316 and who knows? Maybe YOU will be on the high profile See Page!