

Comforting Me

You came to me last night
 in a blaze of comforting warmth,
 your voice welcome in my ears.
 I tried to tell you all I needed to
 You couldn't stay to listen
 "I just came to comfort you"
 I heard you whisper,
 the guilt inside your voice
 drawing tears to my eyes
 I want to hold you
 tell you I understand you had to go
 I want to be in your soothing arms,
 rocked like your baby again.
 Sing to me,
 tell me stories and your dreams.
 "we don't have long"
 The tears pouring down my face,
 I felt your hand
 making those circles on my back
 like you used to when
 I was a little girl
 and you were alive.

This February 8th would have been my parents' 32nd anniversary, had my mother not died August 1, 1999. I wrote this in remembrance of her and all that she did for me.

By Heidi-rose Isenhardt

>> The Police Have Guns! ... Page 4

>> Mon's Basketball ... Page 15

>> COMICS! ... Page 18

Volume 29 • Issue 16 • February 15, 2001

Vox Populi

THE VOICE OF THE PEOPLE

"Do you feel you have enough power over the way things are run at TESC?"



Tim Mattson
 Sophomore

"No, I don't feel I have enough power over the way things are run. It would be nice to have a place to go with my concerns."



Joe Carr
 Freshman

"I don't feel I have any power over how things are run. But I'm headed to a campus democracy meeting to try to rectify matters."



Moira Morel
 Freshman

"No, I feel people on this campus talk a lot about how things should be changed and what needs to be done, but not a lot of effort goes into actually implementing the ideas."



Michael Barhard
 Junior

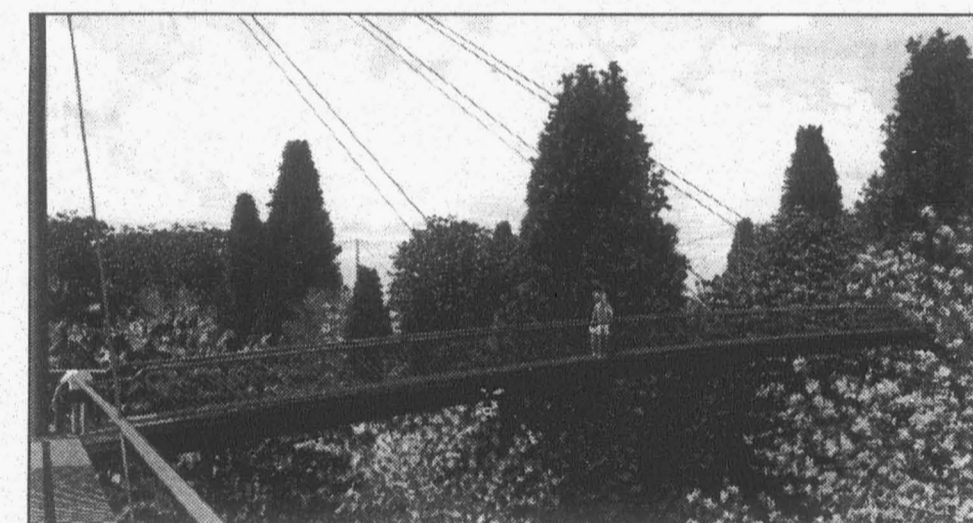
"No, what we say isn't really listened to. It's taken into consideration but never actually made into reality."

photos and interviews by Perrin Randlette

Musical arrows shot through campus



QUINTET OF CUPIDS—The Love Activists, made up of (from left to right) Cameron Burr (senior), Casey Bruce (senior), Mark Morgan (junior), and David Carr (TESC alumni), serenaded the campus yesterday in observation of Valentine's Day. After covering The Proclaimers' "500 Miles" from atop Red Square's grassy knoll, the group moved on to the CRC to spread more lyrical love.



An artist's rendition of the proposed canopy project. Photo courtesy of Nalini Nadkarni

Plans for a treetop walkway

by Tyler Eaton

Have you ever climbed a tree? I have many times, and I remember the thrill of being high above the ground. Just two weeks ago I climbed 100 feet up to the top of a Douglas Fir in the southern part of Capital Forest and watched the sun set. Climbing to the top was relatively easy; however, getting into the tree was not so easy. The tree's branches did not start until about 25 or 30 feet up the trunk, so to get into the tree, I had to use rock climbing equipment provided mostly by my buddy Dave. He bought a cheap fishing pole and brought a slingshot with which he launched the weighted fishing line over a low branch. We made several to reach higher branches, but they were unsuccessful, as the rock weight at the end of the line was getting tangled on the branches of neighboring trees. When we finally succeeded, I removed the rock and

attached a more sturdy line of string. We then reeled the fishing line in over the branch, thereby bringing the string with it. When the line was all reeled in, and the string was down to ground level on both sides of the branch, the process was repeated in reverse so we could wind the string back up to hoist the climbing rope over the branch. At last we—Dave, his housemate and his housemate's girlfriend, and me—all had our harnesses on, and the rope was secured. We started climbing up one at a time.

I was the last one up into the tree, and though my companions all seemed content with the initial effort of getting to the lowest boughs, I wanted to get to the very top. So, with a bit of difficulty, I climbed around them and made my way to the top just in time to watch the sun sink below the nearby hills. It was a remarkable

experience to cling to the slender branches at the top of a tall tree and sway in the breeze. The feeling of awe I felt during that contemplative time, when I was in the Douglas Fir, is probably the same feeling which inspired Nalini Nadkarni, Evergreen Faculty Member and President of the International Canopy Network, to begin her career as a forest canopy researcher. Nalini has championed many scientific and environmental causes and is very active in the forest ecology community. Since 1996, though, her pet project has been the construction of the Evergreen Canopy Walkway—originally dubbed ForestAccess Facility.

There are two main parts to the proposal. One is to build an elevated walkway, consisting of several connected cable stay bridges linked together, to form a loop about 1000 feet around in the forest directly to the northwest of the library building. The second is to build a suspension bridge approximately 300 feet long spanning the ravine near the junction of Geoduck Lane and Driftwood Road in the Campus Reserve (near the beach, for those of you who don't get out much). The main campus walkway would be suspended about 40 to 50 above the forest floor and would be connected to the library building. In addition, an elevated seminar pod would be attached to the loop. This would provide a welcome center, a classroom, and possibly a lab for canopy studies, among other things.

While walking the core walkway loop behind the library building would provide one with various perspectives on the forest from a constant height, crossing the suspension bridge would allow for transition in perspective from the trunks of trees growing on the sides of the ravine to the crowns of the trees growing up from the bottom the ravine. In the original proposal,

continued on page 13

TESC
 Olympia, WA 98505

Address Service Requested

PRSR STD
 US Postage
 Paid
 Olympia WA
 Permit #65

Health Center: Flu season sets in

It's sick season, folks. The Student Health Center has some important information regarding how to survive this infected time of year.

If you have a stuffy nose and a sore throat, you probably have a cold. If you have a fever, headache, and nausea, in addition to mild cold-type symptoms, then you probably have the flu. Drink a lot of fluids (water, Vitamic C juices), gargle salt water, don't smoke, get a lot of sleep, and take it easy. Avoid greasy, rich, dairy, or spicy foods.

If you have flu-like symptoms coupled with a stiff neck, sensitivity to bright lights, and a bright red spotty rash, then you might have

BACTERIAL SPINAL MENINGITIS, which can KILL you! The disease is prevalent in military barracks and college dorms, where people live together in close quarters. Scary! If you suspect that you might have spinal meningitis, go to the Emergency Room. There is a vaccine for spinal meningitis; contact the Student Health Center for info.

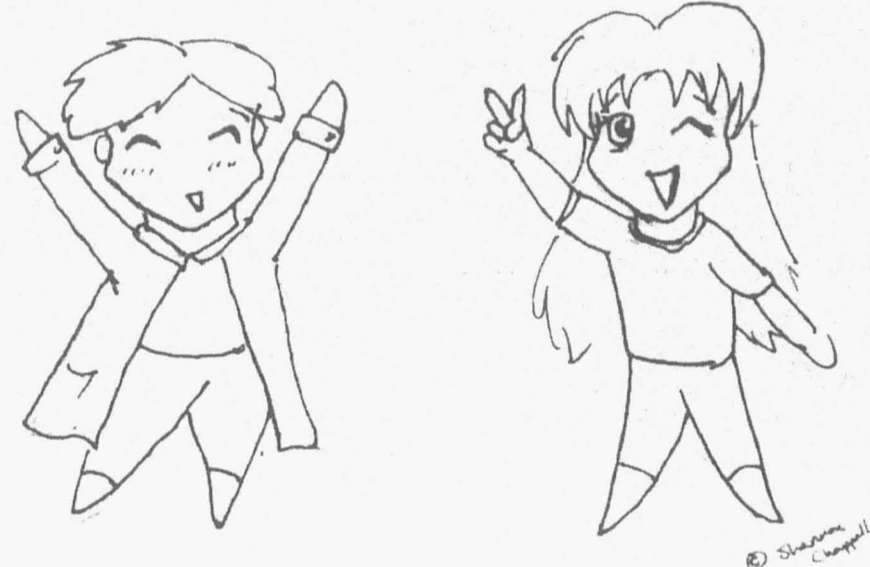
So, if you are sick, wash your hands! Don't share cups and utensils. Cover your mouth when you cough. Were you born in a barn?! No? Then use some common sense!

Info provided by the Student Health Center

chibi chibi CONVENTION!!

by Starla

SATURDAY NOON to 4 A.M. SUNDAY... There will be Anime, gaming, panels, video games, costumes, and art, not to mention the Anime Dance! It will take place in the TESC Lecture halls. Enter the Costume, Art, and Coloring contests for a chance to pick a prize out of our prize box. It's all FREE!



Money Tips

1)Standard Deviation: Measure of the total risk of an asset or a portfolio. 67% of all returns will fall within 1 standard deviation, 95% will fall within 2 standard deviations, and 99% will fall within 3.

2)Market Timing: Optimal times to shift the portfolio among asset classes. Missing all bear markets by being in cash or capturing all bull by being fully invested.

3)Asset Allocation: Process of proportioning investments among different asset classes.

4)Cross-Correlation: Measuring the movement of an asset class compared to other asset classes. This is used to reduce return volatility. A perfect negative correlation is the optimal combination. One zigs while the other zags as measured by standard deviation.

5)Efficient Portfolio: Highest level of return for the lowest amount of risk exposure.

6)Book-to-Market: The value of the assets of a business divided by the value of the outstanding shares of stock for the company.

7)Equity Risk: The stock market return minus the risk-free return (T-Bill).

8)Global Diversification: The allocation of investments in a global market.

9)Benefits: Cross-correlation benefits, increased returns, increased growth potential.

10)Emerging Markets: Markets of less developed countries; usually with higher risks but great potential. Emerging markets include Mexico, Brazil, Indonesia, Czech Republic, Hungary, and Poland.

11)Institutional Funds: Funds that are only available to the large money investors. Institutional investors receive the best rates and the lowest portfolio turnover.

12)Options: The right or option to buy (Call) or sell (Put) a stated number of stock at a certain price in a designated amount of time.

13)Futures Contract: An agreement that an exchange of assets will and must take place in the future at particular price.

Definitions provided by Andrew Bucher, coordinator of the Evergreen Investment Club. EIC meets on Thursday at 2:30 p.m. in the CAB conference room, third floor.



Blotteravaganza and nonesuch

by Jen Blackford

It's sixth week already, and that means I'm in a reflective mood. Some may say it borders on existential, but they would be wrong, so we will not listen to them.

You know, I had a point I was going to make, but I can't think of what it was. So why don't you read blotter instead?

On with the mayhem...

February 6
3:15 a.m. A car stolen from Lacey finishes its long odyssey by being recovered here.

12:19 p.m. This incident of theft (and what a surprise that is) involves a man taking a blueberry muffin. But, he replies, he is really a thief because "this was his first time and that he was the type of person that a warning was appropriate for." This argument does not fly and he gets a citation for theft in the third degree.

1:53 p.m. Some may think that you can alter a parking pass. But those people would be wrong. Dead wrong.

2:59 p.m. A person "mistakenly puts a brownie in her pocket" in the Deli and gets busted with it. When asked what the mistake was, she replies that it was a mistake to take the brownie.

4:57 p.m. Many people believe that there is intelligent life in the universe beside ours. One would hope so, judging from the fact that today

someone tried to stuff a bagel into a toaster, consequently burning the bagel and setting off yet another alarm in Housing.

11:09 p.m. Can you guess all the things that have been thrown off an A-Dorm balcony? Here's a sample: pumpkins, chairs, beer bottles and cans, boxes of food, makeshift pipe bombs, and a potato.

February 7
1:15 p.m. Strangely enough this week, a person does not get a citation for taking something from the Deli. Rather, the person, who apparently took some juice, is allowed to pay for it at the scene and the report gets forwarded to the Grievance Officer. Imagine, the Grievance person actually being allowed to deal with things in the student conduct code.

4:51 p.m. A fire alarm goes off in U-Dorm, hopefully caused by something more sophisticated than a smoldering bread product.

11:58 p.m. A fire alarm occurs, but what have we here? Could there be a notation of "actual?" As opposed to what? All the imaginary, invisible ones that have filled our lives and ears with such illusory joy?

February 8
2:48 a.m. "In Sleep we are all naked and alone, in Sleep we are united at the heart of night and darkness, and we are strange and beautiful asleep, for we are dying the darkness and know no death." (Thomas Wolfe) But alas, such

ruminations cannot apply for at least one person, who is caught slumbering in C-Lot.

11:33 a.m. Q u o t e d directly from the police report: "Upon arrival, the station wagon is observed. It is noted that the left-rear window has been shattered and a portion of the window's glass is on the pavement with more glass inside the vehicle. Contents of the vehicle did not appear to have been obviously disturbed. The rear seat, which was folded down into the cargo area, contained misc. household items such as a toaster, dishes, and a dish drainer, etc. Also noted was a small end table of the style used in Housing."

6:05 p.m. Fire alarm in C-Dorm. Boredom numbs the mind of those who hear about it.

February 9
5:34 a.m. Items are removed from a residence in Housing; however, there is no report of what they were or where they went, or, indeed, a notation of their existence in time and space.

11:50 p.m. Someone drinks and gets an MIP, which is shocking news to maybe three people here.

February 10
4:41 a.m. Berthold Auerbach said "Music washes away from the soul the dust of everyday life." Sadly, someone in Housing is not able to test this theory, as his stereo is stolen.

See BLOTTER pg. 12

Community Youth Services Release

Community Youth Services' Juvenile Diversion Unit is looking for volunteers to make a positive impact on youth in the Olympia, Lacey, Tumwater, Yelm, Rochester, and Tenino areas. Volunteers must be 16 years or older and pass a background check. Diversion holds Community Accountability Boards (CAB) Monday through Thursday from 6:15 to 9 p.m.

Juvenile Diversion is a community-based juvenile correction program, administered through Community Youth Services, that offers an alternative to the formal juvenile justice court system. Through early intervention, the program reduces the chances that the youth will re-offend.

The volunteer board meets with the youth and his/her parents and listens to their stories and the circumstances surrounding the offense. They then determine the youth's consequences, which can include community service, restitution, classes, fines, and counseling.

To become a CAB member, volunteers must attend two three-hour training sessions provided by the Diversion staff. The next CAB training sessions are March 12th and 19th from 6-9 P.M. A variety of other volunteer opportunities are available in other CYS programs. For more information call Barb Garrott, CYS Volunteer Coordinator, at (360) 943-0780, x622.

Be Aware

Early Sunday morning three men in their early 20's attacked students living in Q dorm, leaving two women with concussions for which they were subsequently hospitalized.

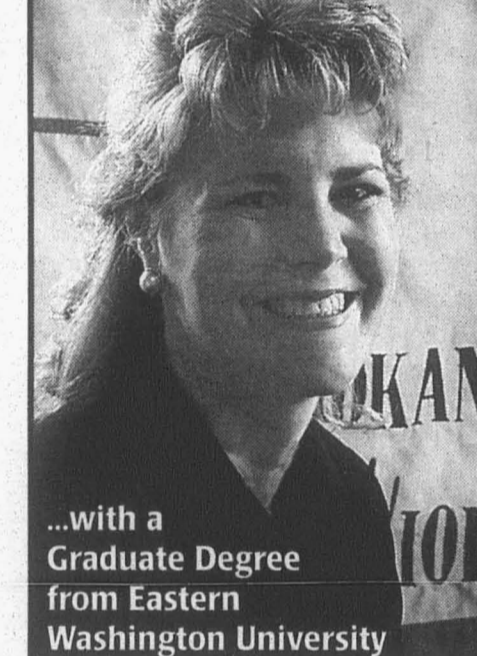
The first assailant, "Brian," is a white man approximately 6'3" with short dark hair. The second is a stocky Hispanic male; the third is a blond, blue-eyed male with a labrett piercing. None were students; people involved in the incident suspect the trio was from Fort Lewis.

The three told Q building residents they were armed and would return to campus.

For more information about this incident, please read next week's cover column.

--Whitney Kvasager

Revitalize Yourself...



...with a Graduate Degree from Eastern Washington University

Eastern Washington University offers over 40 programs in diverse fields; many of these programs are convenient and flexible for working professionals. Courses are held on the main campus in Cheney as well as EWU's two Spokane locations during evenings and weekends.

"I credit the Master of Public Administration Program with facilitating the right mix of professional connections and practical experience that led to me attaining the position I hold today. I continue to use the professional expertise of the faculty on different issues with great success."

- Jennifer Pearson - Stapleton

For more information about specific EWU graduate programs, please contact the Graduate Studies Office at (509)359-6297 or e-mail at gradprograms@mail.ewu.edu

MPA '98 Executive Director, Spokane County Domestic Violence Consortium

EASTERN WASHINGTON UNIVERSITY



The Cooper Point Journal is published 28 Thursdays each academic year, when class is in session: the 1st through the 10th Thursday of Fall Quarter and the 2nd through the 10th Thursday of Winter and Spring Quarters.

The CPJ is distributed free on campus and at various sites in Olympia, Lacey, and Tumwater. Free distribution is limited to one copy per edition per person. Persons in need of more than one copy should contact the CPJ business manager in CAB 316 or at 360-867-4654 to arrange for multiple copies. The business manager may charge 75 cents for each copy after the first.

The CPJ is written, edited, and distributed by students enrolled at The Evergreen State College, who are solely responsible for its production and content.

Contributors from any TESC student are welcome. Copies of submission and publication criteria for non-advertising content are available in CAB 316, or by request at 360-867-4213. The CPJ editor-in-chief has the final say on the acceptance or rejection of all non-advertising content.

The CPJ sells display and classified advertising space. Information about advertising rates, terms, and conditions are available in CAB 316, or by request at 360-867-4654. The CPJ's business manager has the final say on the acceptance or rejection of all advertising.

A year's worth of CPJ is mailed First Class to subscribers for \$35, or Third Class for \$23. For information on how to subscribe, call 360-867-4654.

Business 867-4654
Business Manager: Jen Blackford
Asst. Business Manager: Monica Festa
Advertising Representative: Ian Paden
Circulation and Archivist: Michaela Monahan
Distribution: Will Hewitt
Ad Designers: Nicholas Stanslawski, Lauren Storm
News 867-4213
Editor-in-chief: Whitney Kvasager
Managing editor: Corey Pen
News editor: Enca Nelson
Interim L&O editor: Sky Cosby
Photo editor: Adam Louie
Sports editor: Shasta Smith
Comics editor: Ryan Buck
Designers: Wendy McNeal, Alex Mikitik
Copy Editors: Gwen Gray, Misang Miles, Edith Nelson, Megan Watson

Corrections:

- Last week's page 5 article claimed that Chuck McKinney was the Director of Housing. That is false. Mike Segawa is the Director of Housing. Chuck McKinney is the Assistant Director.

- The comic "The Shape" ran without attribution. Ryan Buck drew it.

- Sharon is not the new President of Israel. He is the new Prime Minister.

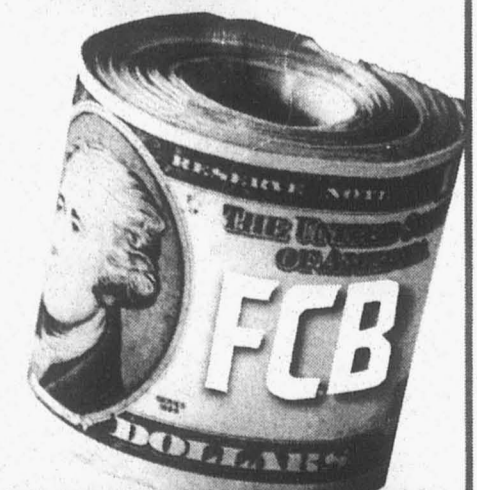
Don't Like Our Logo?

Then make up your own and bring it to us in CAB 316. We might pick it. Do it now!!! NOW! DO IT!

We're On a Roll

West Olympia Now Open!

400 Cooper Point Road SW • 455-6000



www.fcbonline.com FIRST COMMUNITY BANK MEMBER FDIC

February 15, 2001 • 3 • Cooper Point Journal

Campus group questions guns

By Allison Bauer

If you were a student at Evergreen during 1995, you may recognize this flyer. It was posted by a group of concerned students, faculty, and workers during that year to raise awareness among all people on campus of the Evergreen administration's plans to give guns to what had formerly been an unarmed security force. Since it is now 2001, chances are that most of us were not here during the above-mentioned events. So why bring this back up?

The problems raised by this poster have not gone away. The administration still chooses to ignore the concerns of students, faculty, and workers on campus. From this summer's campaign to prevent Sodexo-Marriott from taking over food service on campus, to the ESAS (Evergreen Students Against Sweatshops) campaign to make our campus "sweat-free," the Evergreen administration still chooses to sidestep our community's concerns. While they have attempted to create a façade of regard for these concerns, the overwhelming feeling that I have taken from these meetings with the administration is, frankly, that they do not care what any of us think. If you know your history of relations between Evergreen community groups and the administration, none of this will come as a terrible shock. Perhaps the most telling of these issues was the campaign to prevent arming of Evergreen's "public safety" officers. This campaign covered everything from allegations of sexual harassment by TESC police officers, to general opposition of any "police force" on campus. As can be inferred from the poster, community members attempted to voice their concerns to the administration through the "proper channels" by attending DTF meetings. However, when it became glaringly obvious that the administration intended on ignoring community concerns, as it has in more recent campaigns, people conducted sit-ins and protests. One demonstration

included thousands of people blocking traffic in the bus loop! Despite overwhelming protests, the administration armed public safety officers anyway. According to Daniel Winthrow, an Evergreen student in 1995-1996, "If community participation matters, and you really care about how the public feels about it, how much more do you need to hear?"

In addition to continual lack of concern by the administration, discourse regarding guns on our campus has increased for other reasons. Most importantly, you might have noticed that the flyer states, "Public safety will be visibly carrying glock semi-automatic firearms FROM 6 PM TO 8 AM DAILY." If you've seen a TESC police officer on campus recently, chances are you've seen him or her carrying a firearm—yet, if you check the time, it's not necessarily between 6 p.m. and 8 a.m. So, what's happening?

According to Steve Huntsberry, head of Campus Police Services, there are many reasons that TESC police officers may be carrying their guns during the day. If a "report of a suspicious person, assault [of a person on campus], or incident of domestic violence" is made, an officer is making an arrest or "conducting a vehicle stop," or a community member is "carrying a large amount of money," the officer will carry his or her gun to the scene. However, Mr. Huntsberry also cites the more arbitrary reason of an "articulated threat to the officer or persons in the community." He goes on to state that, "this decision always comes about after a conversation with the Vice President of Student Affairs," Art Costantino. Well, it seems Mr. Costantino has been having a lot of conversations with Police Services recently, because I, for one, have been seeing a lot of guns during the day—and not in the above described circumstances.

Perhaps the larger issue, however, is why we need an armed police force at all. According to a November 26, 1997, letter from Art

"LIMITED ARMING" IS COMING TO EVERGREEN

PUBLIC SAFETY WILL BE VISIBLY CARRYING GLOCK SEMI-AUTOMATIC FIREARMS FROM 6 PM TO 8 AM DAILY DEADLY FORCE IS TO BE USED IN RESPONSE TO "POTENTIALLY DANGEROUS SITUATIONS, TO PROTECT PERSONS OFFICIALLY TRANSPORTING LARGE AMOUNTS OF MONEY, OR TO PROTECT VISITING LECTURERS OR GUESTS..."

TIMELINE OF EVENTS:

APRIL 1993: BOARD OF TRUSTEES COMMISSIONED A CAMPUS POLICE FORCE AT EVERGREEN.

SPRING 1995: NEIL MCCLANAHAN, UNDERSHERIFF OF THURSTON COUNTY, BECOMES INTERIM DIRECTOR OF SAFETY, AND IS PAID TO MAKE A REPORT ON THE STATUS OF THE DEPARTMENT AND STANDARD OPERATING PROCEDURES.

JUNE 1995: SIX PUBLIC SAFETY OFFICERS SWORN IN AS POLICE OFFICERS

NOVEMBER 9, 1995: MR. MCCLANAHAN RECOMMENDS OFFICERS SHOULD BE FULLY ARMED

NOVEMBER 1995-PRESENT: STUDENTS ORGANIZE IN PROTEST OF THIS RECOMMENDATION. AT PUBLIC FORUMS, THERE IS AN OVERWHELMING AMOUNT OF DISSENT AND OUTRAGE AT THE IDEA OF OFFICERS CARRYING GUNS. A PETITION IS SIGNED BY OVER 1,000 STUDENTS, ALL AGAINST THE ARMING OF PUBLIC SAFETY. A STUDENT ORGANIZATION IS FOUNDED AGAINST ARMING; A SAFETY CONFERENCE IS PLANNED BY STUDENTS. SIT-INS, RALLIES, DTF ATTENDANCE, NOTHING WORKS ... STUDENTS ARE IGNORED

SEPTEMBER 1, 1996: GUNS ARE COMING TO EVERGREEN

Costantino to an Evergreen student, whom I have chosen not to name, "there have been no police officers shot in the line of duty on campus within the last 25 years." Mr. Costantino goes on to state that, at the time, "Thurston County Officers provide[d] backup, and I am not aware of any Thurston County Officers who have been shot on campus." Therefore, the argument that campus security was unsafe during the course of their job does not seem to be legitimate. Instead, it seems that Evergreen's campus security officers were armed as a preventative measure; in other words, to prevent the possibility of an officer or community member being shot in the future. The larger question here, of course, is how bringing more guns onto our campus would prevent that from happening. The bottom line is guns are designed to kill. If you want to protect

yourself or others, it is certainly possible to do so with less lethal measures. However, as soon as a gun is displayed, it raises the tension of an already confrontational situation to the point where a more peaceful means of negotiation seems not only unlikely, but virtually impossible.

So what can we, as members of this community, do to address this issue? A group of concerned students, faculty, and workers is forming on campus to address the police presence, whether armed or not, on Washington State campuses and in the greater Olympia community. If you are interested in this issue, please join us in Library 3500 on Wednesday afternoons at 1:00 p.m. If you want more information, or would like to see sources cited in this article, please feel free to contact me at the EPIC office at 866-6144.

Fostering Growth:

Activists and Scientists Converge for Cascadia Conference

By Rachel Kaster and Ariel Stonebloom

The Cascadia Activism and Ecology Conference, taking place from April 5 through 8 on the Evergreen campus, is honoring the diversity of the environmental movement by bringing a variety of voices to discuss environmental policy and philosophy. The conference will be comprised of panel discussions, speakers, and workshops led by Evergreen faculty, community members, activists, and scientists to create dialogue between the various

groups that represent the environmental movement. The hope is to facilitate ideas and discussion on conservation and forest campaign issues that plague the Pacific Northwest.

One of the many speakers representing the activist community is Beverly Brown, long time activist, community organizer, and author. Brown is probably most famous for her book *In Timber Country*, which tells personal stories of the inhabitants of Oregon's Rogue River Valley during the height of spotted owl controversy that sparked the environmental

crusade of the Cascadia region. Brown's attempts to represent both sides of the environmental struggle within communities gives her readers insight into the complicated resolution of environmental issues.

Dr. Andrew Carey, a researcher with the Pacific Northwest Research Stations' Olympia Forestry Sciences Laboratory, will be speaking about biodiversity management and sustainable forestry in the Northwest forests. His research has helped develop the Biodiversity Pathway, a forest management strategy meant to enhance stability within the forest

ecosystem. This system helps to maintain sustainable forests for wood production and other forest products, and also to assist in the recovery of endangered species.

Both Dr. Andrew Carey's and Beverly Brown's insights on forest issues will be an interesting and important contribution to the conference this spring. The Environmental Resource Center (ERC) is proud to organize and sponsor the conference along with the help of many other Evergreen student groups. This event is free for all Evergreen students, and registration is available now.

Go to this play; do it now!



Cast members of "Janie's Fortune", (from left) Karen Thomas (junior), Liz Simonson (senior), and Nathan Rayman (sophomore), rehearse the first act of the play last Tuesday night. "Janie's Fortune" is a senior thesis project written and directed by Sindi Somers. The play will combine music, theater, and multimedia and will run February 22-24.

photo by Adam Louie

Sex Organ Saga or Genitalia Debacle?

by Selby

It all started out simply and innocently enough. Marti Evans decided only a few weeks ago that it would be a good thing if "The Vagina Monologues" were performed locally. "The Vagina Monologues" have been, since 1998, performed on Valentine's Day nationwide to raise awareness about violence against women.

So after other interested

performers had been contacted and a performance space established, Evans and Eliza Steinbock with another friend created some promotional posters. Letting themselves go with the creative flow, two giant vaginas were created. The larger of the two destined for the Library Lobby and the smaller to live in the heavily trafficked area in the CAB.

For about a week nothing

extraordinary or special happened: a life went on, teachers taught, and hopefully students learned. But by the following Monday, the vagina in the Library Lobby had been removed.

The very next day, a giant, green, and very erect penis was installed in the same corner in which the vagina had been hung. It was later discovered that the removal of the vagina poster and the installation of the penis were two totally separate events perpetrated by two entirely different people. However, since this information wasn't well-known until several days later, many people made the logical conclusion that the two events were related and saw the removal of the vagina poster as a malicious crime.

In a retaliatory strike, the penis was removed from the Library Lobby and returned the next day; repainted in a somewhat fleshtone, given a smiling face and the phrase "Omnia Extares." Now, I know of perhaps only three or four people on this campus who haven't considered the phallic nature of Evergreen's beloved mascot, so it seems only appropriate that an offending penis be reconstituted as a geoduck.

Obviously, all of this back and forth sparked the interest of a number of other students on campus concerned with what was happening. Enter Joanna Hurlbut, one of the coordinators of the Women's Resource Center, who after conversing with Justin Rodda, one of the creators of the green penis, decided to create a forum to discuss all of the recent events and to hopefully clear up some of the confusion and anger that had resulted.

The forum was facilitated by

Simona Sharoni, a faculty member with a great deal of experience as a moderator/facilitator and despite being held at noon on a Friday, the forum had about 60-75 attendees. The first objective for the group was to try to establish a realistic timeline of events and who, if anyone, would claim responsibility for different actions.

After a half-hour or so a much clearer picture emerged of what had transpired over the past few weeks. (See info box on left of this article.) As mentioned before, it almost immediately became clear that Rodda, who installed the giant penis, had nothing to do with the tearing down of the vagina poster.

This, however, does not mean that anyone who originally believed the two events were related are not entitled to their anger and frustration. I must admit I was angered myself over what had happened.

With the timeline now established, the discussion then led to identifying the motivations behind the particular actions that took place. The reason behind the vagina

see Saga/Debacle on page 12

A Timeline* of Genitalia

* This timeline was created collaboratively on Friday, Feb. 9, at an open forum. All those present gave input as to what happened at what time and as such is subject to personal recollection.

• Monday, Jan. 29 - Two posters, both likenesses of the vagina, are hung up on campus to promote awareness of the upcoming production of "The Vagina Monologues" at the Capitol Theater. One is placed in the Library Lobby and the other is placed in the CAB, opposite the deli.

• Monday, Feb. 5 - The poster in the Library is discovered missing.

• Tuesday, Feb. 6 - In the same general location where the vagina poster had previously hung in the Library, a green erect penis is installed.

• Wednesday, Feb. 7 - The poster in the CAB is discovered torn down, destroyed, and left in front of the Women's Resource Center. Poster is salvaged and returned to

the balcony across from the deli only to be removed and destroyed for a second time.

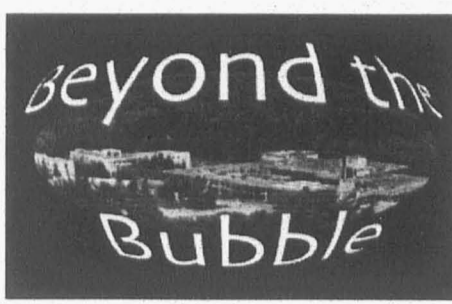
• Wednesday, Feb. 7 & Thursday, Feb. 8 - Penis is removed from the Library. Later the penis is returned to the Library, but has been repainted to resemble a geoduck and sports Evergreen's motto "Omnia Extares."

• Wednesday, Feb. 8 - A new poster bearing a shadow outline drawing of a vagina with the phrase "here was a vagina" is installed where the first poster was located in the Library.

• Friday, Feb. 9 - The penis/geoduck is discovered missing.

• Friday, Feb. 9 - An open forum is held in order to foster dialogue about all of the recent events surrounding the vagina posters and penis. A place for people to discuss their reactions, questions and concerns.

• Wednesday, Feb. 14 - A new penis and vagina appear on the knoll on Red Square.



By Brian Frank, Graham Hamby, Vanessa Lemire, and Stephen Karmol

This week's top stories:
 Olympia's Bread and Roses Shuts Down
 Israeli Army Assassinate Arafat's Bodyguard
 Feds to shut down Napster

Domestic

•City officials shut down the "illegal" homeless shelter Bread and Roses, which is located in downtown Olympia, last week. The shelter has provided shelter for women and children and feeds the homeless, but is not allowed to provide sleeping quarters. Bread and Roses took in many homeless people that were ejected from other shelters for past criminal records or disruptive behavior. (more at news.theolympian.com/)

•In a report reminiscent of the Cold War, the CIA urged the Bush administration to watch Russia more closely, stating that "there can be little doubt that [Russian] President Putin wants to restore some aspects of the Soviet past — status as a great power, strong central authority and

a stable and predictable society — sometimes at the expense of neighboring states or the civil rights of individual Russians." Relations between the US and Russian governments have been strained since the US government plans to construct a National Missile Defense system were initiated in the past two years. (more at asia.dailynews.yahoo.com/)

•Investigative reporting by the London Guardian last week documented massive increases in the wealth and political clout of pharmaceutical companies. The combined wealth of the world's five largest drug companies is more than twice of all of sub-Saharan Africa (with a 36% increase in profits last year). Drug companies spent \$24.4 million in campaign contributions in the U.S. last year. In 1998 the Clinton administration threatened South Africa with sanctions if it developed generic alternatives to US-made AIDS drugs. (more at www.guardianunlimited.co.uk/)

•Bush announced last week that he would approve \$310 Billion for the Defense Department budget, which does not include the \$14.3 Billion for Department of Energy defense programs. U.S. military spending is now at 95% of Cold War levels, and is greater than the world's next 12 largest military budgets combined. (more at www.clw.org/)

•A "reclaim the streets" party/protest took place in San Francisco in solidarity with the indigenous peoples of Ecuador, who are undergoing repression from US corporate interests. A large dollar sign was burned in front of the ROTC U.S. military office at Bancroft College to protest the U.S. military presence in Ecuador. Five were arrested. (more at www.indymedia.org/)

•More than 50 Amazon.com workers protesting recent layoffs staged a 15-minute walkout last week. The protest marked the one-week anniversary of the announcement of the layoffs, which workers say unfairly targeted supporters of a union being formed

at the Seattle-based customer service center. This was the first labor protest of the sort in Amazon's history. (more at news.cnet.com/)

•The U.S. 9th Circuit Court of Appeals ruled against Napster last week in a decision that is likely to shut Napster down for good. The court ruled that Napster, which provides free software facilitating the trading of music for hundreds of thousands of internet users, must remove all copyrighted material from its archives, a move which would essentially gut Napster's service. (more at dailynews.yahoo.com/)

•The Pacifica Radio Foundation is threatening legal action against a woman who has maintained the website wbai.net. The website has been a center of support for freedom of speech on the New York City radio station WBAI since Pacifica's management clamped down on the station in recent months. Pacifica radio is an alternative broadcasting network that has operated in the US since 1949, and has recently come under sharp criticism for exerting greater control over what programmers can and can't talk about on the air. (more at www.infoshop.org/)

Foreign

•Protests by indigenous peoples including environmentalists, women's groups, workers, and peasants ended this week with the Ecuadorian government meeting the demands of the protesters. Demands included lowering of the cost of gasoline, gasoline subsidies for the poor, and making credit available to the poorest rural workers. Protesters brought the country to a standstill during the two weeks of the uprising, which was over government austerity measures in which six indigenous people were killed. (more at www.ips.org/)

•Israeli tactics to contain the Palestinian uprising appear to be escalating following the election of right-wing leader Ariel Sharon as

Israeli's Prime Minister. Several Palestinians were killed, including a 14-year-old boy and Yasser Arafat's personal bodyguard, an attack even the U.S. State Department condemned. Hundreds were injured in shelling attacks last week, and Palestinians have accused the Israeli army of using nerve gas in its attacks. The Israeli army has killed more than 400 Palestinians in the last 4 months. (more at dailynews.yahoo.com/)

•French journalist group Reporters Sans Frontiers reported that as many as forty-five nations restrict their citizens' ability to surf the web. Nations including China, Saudi Arabia, Sudan, Vietnam, and Burma require computer registration, state controlled internet service providers, filters, or outright bans to prevent citizens access to material deemed "subversive," a threat to national security, or undermining of traditional values. (more at www.ips.org/)

•Sweden is pushing for a European Union wide ban on TV commercials aimed at children. Advertisements for kids are already banned in Sweden, but the ban has been largely ineffective as most of the channels available in Sweden are broadcast from elsewhere in Europe. Children's advertising is a \$29 Billion industry in Europe. (more at www.afp.com/)

•Thousands of farmers rallied in France last week in support of Jose Bove, the leader of the militant French Farmers Confederation, who is being sentenced to three months in prison for plowing and burning fields of Genetically Modified crops throughout France. Bove is currently appealing another conviction for demolishing a McDonald's in France last fall. (more at www.ap.org/)

•Thousands of protesters organized by the group Stop Huntington Animal Cruelty gathered at nine pharmaceutical companies in London last week, claiming that they all have direct dealings with Huntington Life Sciences, which tests on animals. About 250 animal rights activists smashed windows and equipment of two of the pharmaceutical companies, Bayer and

continued on page 12

A Weekly Chart of Universal Energy

By Courtney Haedt

We have entered the eighth Mayan month- The Galactic Moon of Integrity. This moon-cycle offers us the opportunity to integrate the truth into our lives, accepting and committing ourselves as expressions of the ideal while honoring our ongoing process of evolution. The animal associated with this lunar cycle is the hawk, whose bird's-eye view allows us to see the entirety of the picture. The hawk is also a sacred messenger, carrying wisdom on its wing and crying out a call to raise awareness. Allow your actions to embody this free-spirited animal. Identify with your heart.

We are in the Wavespell of the Yellow Sun, the cycle of the sign of enlightenment. Now is the time to become what you are. Claim the light you contain. Express wholeness.

Thursday February 15: BLUE SELF-EXISTING NIGHT- Day 9, Moon 8 <PORTAL DAY> KIN 43- Tone 4- Begin to define the intentions you plan to accomplish.

*I define in order to dream
 Measuring intuition
 I seal the input of abundance
 With the self-existing tone of form
 I am guided by the power of self generation.*

Friday February 16: YELLOW RESONANT SEED- Day 10, Moon 8 KIN 44- Tone 5- Facilitate action into the next phase of your plan.

*I empower in order to target
 Commanding awareness
 I seal the input of flowering
 With the resonant tone of radiance
 I am guided by the power of free will.*

Saturday February 17: RED RHYTHMIC SERPENT- Day 11, Moon 8 KIN 47- Tone 6- Create the path you wish to take.

*I organize in order to survive
 Balancing instinct
 I seal the store of life force
 With the rhythmic tone of equality
 I am guided by my own power doubled.*

Sunday February 18: WHITE RESONANT WORLD-BRIDGER- Day 12, Moon 8 KIN 46- Tone 7- Become a mirror of your dreams; behave as your ideal self.

*I channel in order to equalize
 Inspiring opportunity
 I seal the store of death
 With the resonant tone of attunement
 I am guided by the power of endlessness.*

Monday February 19: BLUE GALACTIC HAND- Day 13, Moon 8 KIN 47- Tone 8- Manifest your destiny.

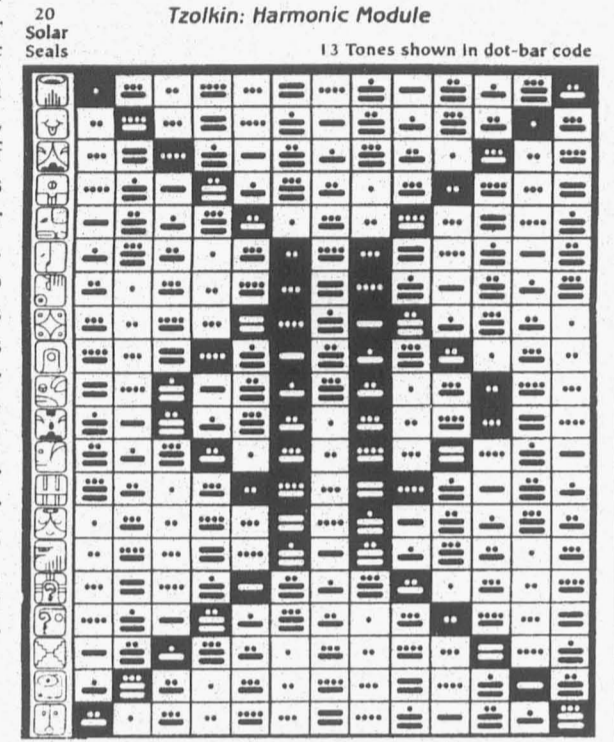
*I harmonize in order to know
 Modeling healing
 I seal the store of accomplishment
 With the galactic tone of integrity
 I am guided by the power of magic.*

Tuesday February 20: YELLOW SOLAR STAR- Day 14, Moon 8 KIN 48- Tone 9- Take purposeful action.

*I pulse in order to beautify
 Realizing art
 I seal the store of elegance
 With the solar tone of intention
 I am guided by the power of flowering.*

The Tzolkin Chart

The Tzolkin chart design shows blackened squares, forming a shape akin to the double-helix of DNA. These days, which are marked in black, are called portal days (note BLUE SELF-EXISTING NIGHT above). The galactic activation portal days represent a time when energy is at the peak of its flow. When specific tones come together in combination with a tribe, they create an elevated frequency which allows for entrance to heightened states of awareness. The 52 portal days are known as the "Loom of the 13 Moons," the pattern which is the basis for the Tzolkin structure. There are 26 portals on each side of the column, which is in itself another intensified vortex of energy (this is the central column). On portal days, expect an increase of intensity. These days may be challenging or particularly wonderful. You may feel sensitive to the energy and thus fluctuate between bliss and sorrow. Remember to breathe and allow yourself unconditional love. Accept your imperfections and honor the accomplishments you have made manifest. Walk into a new reality beyond fear. Allow for the incredible. In Lake'ch (I am another yourself)



Wednesday February 21: RED PLANETARYMOON- Day 15, Moon 8 KIN 49- Tone 10- Possibilities become reality when activated with heart.



*I perfect in order to purify
 Producing flow
 I seal the process of universal water
 With the planetary tone of manifestation
 I am guided by the power of navigation.*

AMoS Computers 2410 Harrison Ave. NW West Olympia 360.786.5112 sales@goamos.com

Olympia's newest Apple Specialists! \$200 Instant Rebate on select iMacs until Feb. 19th (DV+ and Special Edition only)

CD-RW DRIVES
 EZQuest 32x4x4x USB \$225
 EZQuest 32x8x4x Firewire \$330
 EZQuest 32x12x10x Firewire \$459

STORAGE
 VST USB Floppy Drive \$ 99
 Imation LS120 Ext. USB \$179
 Iomega 250MB USB Ext. \$179

New Power Mac's and the amazing PowerBook G4 coming soon!

Amos PC's - Custom built for any budget!!!

Barbones 2000 Intel Celeron 600MHz Games System 10GB Hard Drive ATI Midtower 8MB RAM 16.1" Screen 50K CD-ROM Windows Millennium Mouse, Keyboard, Speakers Minimum 1 Year Warranty \$699	AMD Home System Duron 800 MHz 24MB SDRAM 20GB Hard Drive ATI Midtower 8MB RAM 16.1" Screen 50K CD-ROM Windows Millennium Mouse, Keyboard, Speakers Minimum 1 Year Warranty \$999	SCANNERS Umax 2000P Parallel \$ 99 Umax 2200U USB \$149 Umax 4000U USB \$235
PIII Netserver Pro PIII 900 MHz 4GB SDRAM 20GB Hard Drive 10GB 2-CDRW 50K CD-ROM ATI Midtower 8MB RAM 16.1" Screen 50K CD-ROM Windows Millennium Mouse, Keyboard, Speakers Minimum 1 Year Warranty \$1299	AMD Techmaster Athlon 1000 4GB SDRAM 20GB Hard Drive ATI Midtower 8MB RAM 16.1" Screen 50K CD-ROM Windows Millennium Mouse, Keyboard, Speakers Minimum 1 Year Warranty \$1499	PRINTERS HP Deskjet 640C Inkjet \$149 HP Deskjet 935 Inkjet \$245 HP Deskjet 950C \$325

New Store Hours!
 Monday-Friday 10AM-7PM
 Saturday 11AM-5PM
 Closed Sundays

Rainy Day & Day RECORDS

Since 1973
 CDs, Cassettes, Lps
 New & Used

Over 600 Hip-Hop titles on CD & LP / 12"
 Over 500 Techno Titles
 New Stock in Every Thurs.

Skateboards, Clothing
 Converse Shoes

Video Rentals
 Specializing in Art & Foreign Films
 2 Day Rentals
 \$1.95ea. for 2 or more
 Mondays are half price!!!

Ph 357-4755
 M-Sat 10-8, Sun 12-5
 intersect of Division & Harrison
 @ Westside Shopping Center

Oh, the Places You'll Go on Intercity Transit!

Show your Evergreen student ID when you hop an I.T. bus and ride free. It's that easy! Skip the parking hassles, save some cash, and be earth-friendly. I.T. is your ticket to life off campus!

For more info on where I.T. can take you, pick up a "Places You'll Go" brochure and a Transit Guide at the TESC Bookstore. Or call I.T. Customer Service at (360) 786-1881 or visit us online at www.intercitytransit.com

Intercity Transit
 Fares paid through student programs

the shortest distance between you and your refund

Use IRS e-file, specify Direct Deposit to your account, and you could get your tax refund back in as little as ten days. Ask your tax preparer for full details or visit us at www.irs.gov

The Internal Revenue Service Working to put service first

Orca Books
 Olympia's Largest Independent Bookstore

Student Discount 10% Off New Texts

We buy books everyday!
 509 E. 4th Ave. • 352-0123
 Mon-Th 10-8, Fri & Sat 10-9, Sunday 11-5

"The Most Fun Place to Shop in Olympia!"

FINDERS KEEPERS ANTIQUE MALL

1728 State Avenue 943-6454
 Mon-Sat 10-5 Sun 12-4

FREE PREGNANCY TESTS

Now at all Planned Parenthood health centers

If you've missed a period or think you're pregnant, don't wait. Find out. Our medical staff can help.

- Totally confidential
- Just walk in
- Have your results in minutes

Look in white pages or check out our website for center near you.

Planned Parenthood
 1-800-230-PLAN
www.ppww.org

imagine this
you
 CPJ editor 2001-02



details and applications available
 from Feb. 9 in CAB 316
 deadline to apply: March 5

Letters & Opinions

SAVE OUR TREES!

Mandatory Romance

Column by Gwen Gray

Having acquired a column and officially committed myself to producing seven hundred coherent words on a weekly basis, I've hit Writer's Block. Due to my plight, I have decided to stoop to writing something topical. However, I still have my pride. If I must be relevant, I will at least be unpopular. I'm gonna bash Valentine's Day.

"But wait a minute," you might say. "Didn't you bash Groundhog Day last week?" Yes I did, but it was only a throwaway line, so it doesn't count. Did I mention Writer's Block? Besides, I have a legitimate point here. Valentine's Day is stupid.

To begin with, the name is stupid. St. Valentine was a Christian martyr whose martyrdom consisted of imprisonment (witness the endless richness of a Catholic school education). The story goes that there was a pair of young lovers in the town where he was held whose parents forbade them to be together. They communicated by exchanging notes via St. Valentine. One of them would pass a note through the bars on his window and the other would pick it up later. In some versions of this story that was the end of it, in others he became an informal post office for young people in the area. Regardless, that story is why "Valentines" are love notes and cards.

I say this is a story because all sorts of scholars argue that the idea is silly and probably untrue. Let's say that it isn't, and Valentine played Cupid from inside an eight by ten stone box. I still want to know why the cards and holiday are named after him. Why didn't they name it after the lovers who started the whole thing? For that matter, why name an occasion dedicated to love and friendship after an obscure historical event that centered on a relationship that was forbidden and frustrated? But never mind that, it's a minor academic quibble I probably wouldn't have noticed if I didn't find the holiday so distasteful. Let's get to my reasons for disliking the whole idea.

"But wait a minute," you might say, because I invented you for my column and you will repeat that

phrase as many times as I want you to. "Valentine's Day is a holiday in honor of love and romance. That's a beautiful thing, even if it has gotten a little commercial."

Yes, the celebration of love is a beautiful thing. But it seems to me that a holiday to celebrate love and romance cannot help being self-defeating. As far as I'm concerned, it's not romantic to do what's expected of you. Valentine's Day mandates love. You will provide your beloved with a card, roses, and chocolate or agreed upon substitutes or there will be hell to pay. I think that's icky, frankly. It makes expressing love a chore to be accomplished, instead of a pleasure. If you're not romantic, you shouldn't have to be, and if you are, you could figure out a way to do it without being neck deep in paper hearts for a month out of every year. That's not romance, it's brainwashing. You know what I think is romantic, though? When whoever I'm with does something sweet without being reminded by TV commercials and supermarket displays.

That's the other thing: it's not the fault of the holiday so much as it is of our culture, but it's part of what I hate about Valentine's Day as I know it. There's so much spending involved, and so much stuff. Cards, roses, and chocolate. Little candy hearts with messages on them and stuffed animals with bows. Dinners. Diamonds. Roses dipped in gold. Everything that can possibly be heart-shaped or pink. It's not that I'm against filling the world with chocolate, but I've always thought that emotions get harder to find with every piece of stuff you pile on them. On the other hand, what do I know?

Even my mother says I'm unromantic. I like to think, though, that I am one of the last true romantics. I believe that Valentine's Day tries to harness and capitalize on our better instincts and that it cannot help damaging them in the process. I believe that it stopped being cute and started being crass about fifty years ago. But most importantly, I believe that I've written seven hundred words about it now, and I love it for that. I truly do.

Planning Sustainable Forestry

Thank you, David Landrum, for raising significant questions about the proposed Sustainable Forestry plan for Evergreen's forested landscape (February 8, 2001). I agree; there needs to be a much wider discussion of the college's intentions for its entire natural landscape, and a consensus built about what we want 25, 50, even 100 years from now.

In the coming years, the west side and Cooper Point will continue to "in fill" with development; the TESC property will soon be a relatively natural island in an otherwise managed and fragmented landscape of housing, roads, gardens, golf courses, school yards, not to mention abundant predators: domestic and feral dogs and cats.

So what kind of learning laboratory do we want for TESC's natural lands? I, for one, would like management decisions to keep the Evergreen property as "natural" as

possible and to maximize diversity for the flora and fauna indigenous to this locale. In order to keep our acreage and protect it from proposals for other state government uses, I think the best case we can make is that our landscape is an important, distinctive, natural area and learning laboratory for students and visitors.

The value of our college landscape will go up according to how unusual it is, not how "ordinary" it is. Parks and managed forests (of all types) will be a dime a dozen. A natural area, as much as it can be kept in that form, will be out of the ordinary and valued, reflecting not only the college's larger educational mission but its environmental one as well.

-Jean MacGregor
 Washington Center for
 undergraduate Education
 Adjunct Faculty Member,
 Environmental Studies

Throughout my four years of undergraduate education at Evergreen, I've witnessed some erroneous situations involving this campus, and I am beginning to believe that the sustainable forestry movement in full swing at this point is going to take the cake. Congratulations!

Last week as I walked through the CAB building and saw the outreach table for the sustainable forestry program, I couldn't resist the temptation to engage in some conversation on the issue. What I witnessed was somewhat horrifying. Two of the folks at the table were quite friendly and responsible. Others, however, were approaching people with surveys in hand and telling blasphemous lies. Among them were, "If we don't log, the state is going to build a stadium of some sort," and, "We are not going to do anything that even resembles a clearcut," or, "Most people we have talked to have been supportive," and the list continues. It was DISTURBING. The rest of this article is devoted to debunking these lies.

I will start by saying that part of their plan for logging Evergreen consists of an area that is over an acre, and will have 70% of the trees removed. THIS IS A CLEARCUT EVEN BY FOREST SERVICE MANAGEMENT GUIDELINES.

The following breakdown may seem excessively long and inappropriate for a response to a single letter printed in the CPJ, but the reality of this issue is that these views are the same ones being expressed by the "out reach" committee that has been setting up in the CAB building and getting surveys filled out. So read on and keep these points in mind the next time you are questioned on the issue.

In response to the recent articles concerning sustainable forestry featured in the CPJ, I would like to share some critiques and express some differing view points on the subject.

In the second paragraph of the article, it is stated that "With the ever-growing global population, the demand for wood products will be increasing exponentially, and the pressure on our remaining old growth forests... will continue to escalate." This assumption, while it certainly supports the perspective of the article, is devoid of rational economic theory. According to basic economic principles, as the supply of a good decreases, the price will increase accordingly, and competing goods will enter the market eventually "out-competing" the original product. This assumption, by ignoring the reality, is congruous with the statement that with a growing population, we must drill more oil in order to support the needs of those people—a philosophy that our newly elected and, as you know, incredibly conservative president staunchly supports. The answer is market substitutions!

Secondly, the third paragraph states that the Northwest Forest Plan is a local example of a policy that balances species protection with timber harvest. If this is truly an example of good stewardship in the opinion of the sustainable forestry class, then all of my worst fears about this campus project are true. The forest plan you refer to has failed miserably at protecting the species that it was originally drafted to conserve, not to mention the species that are not addressed under this plan (Red-tree voles or Vaux's swifts, for example). The Forest Service in Washington State and Oregon have been sued so many times since 1994 for not completing the surveys required under the plan that the timber sale program has been essentially shut down over the past two years. (See survey and management Environmental Impact Statement.) Meanwhile, recent analysis completed by a non-profit group, The Gifford-Pinchot Task Force, has shown that with proper analysis,

only 30% of the habitat, when actually checked out, could be determined suitable for spotted owl habitat.

Third, it seems that the article attempted to draw connections between the Federal Northwest Forest Plan and an example of a small time forester in British Columbia. The forest plan only covers region 6 (Washington, Oregon and California), and was crafted for public land management only, not private. This point directly relates to your statement concerning our remaining 5% of old growth that lies entirely on public lands, not private land. Because of the difference in management directives from public, private lands in this region for the most part have been so mistreated that there is no remaining old growth. These lands are now dominated with monotypical stands of Douglas Fir that afford little understory habitat for old growth or multi-age stand-dependant species.

While this may not seem pertinent to the purpose of the article, I would recommend researching such issues and presenting the facts in a clearer manner if the goal is truly to "gain the support of your neighbors." Furthermore, it seems to me that if you need to research the effects that removing 70% of the trees from an area have on that ecosystem, then go on over to any industrial forest land and take a gander.

The article goes on to state that if our campus is not used for "educational purposes," it could eventually become a "construction site for state buildings," and further, that this "would be a shame" given Evergreen's "emphasis on nature." Now, I've been called in the past for using an excess of environmental rhetoric in my attempts to sway the views people have on public lands issues, but this goes beyond even my best work. True, this land is owned by the state and could be used for construction, but how does this support the thesis that we need to selectively log our campus? Could we not just as easily direct our research at monitoring forest re-growth and natural development of old growth characteristics? After all, is that not what is stated as the pressing problem in the beginning of the article? And the emphasis on nature bit is absolutely absurd. Yes, Evergreen has historically had an emphasis on nature and biological conservation (just ask any of the environmental studies founders), and this can certainly continue without the introduction of logging on the college's land! I personally am a little confused about how an emphasis on conservation and biodiversity is connected to firing up chainsaws in our woods, period.

Once again, these views are not limited to this single article but are being used (at least in part) by everyone I've encountered from this program!

I would like to close by saying that a lot of us "conservationist" folks started out this year very interested in the work the sustainable forestry program was proposing. The vast majority of us now oppose the project due to the aggression and ignorance that has plagued the outreach materials and proposals and the surveying methods both in the woods and in the CAB. There is no way that anyone will ever set foot in our woods with chainsaws until they do their research and present it to the college community in an honest and well informed format. I also encourage everyone who reads this to contact Gabe Tucker, the Sustainable (sic.) Forestry Class, and the Campus Lands Use Committee to voice your opinions about their proposal in a respectful and educated manner.

-Shoren Brown
 5th year Evergreen student, Majors in Conservation Biology and Environmental Policy, and Environmental Resource Center volunteer.

LETTERS & OPINIONS

RANCOR promises to keep an eye on Bush

-A student's efforts to finish her project results in the formation of a new Evergreen campaign

By Aerin Tolbirt

First off, let me introduce myself: my name is Aerin, and I am a senior at Evergreen. For the past two quarters I have been in the Hype & Hucksters program studying media campaigns. As part of the requirement for fall quarter, each of us was supposed to do 40 hours of volunteer work for a political campaign. Due to untreated major depression and a variety of other minor factors, I was unable to complete that component. My beneficent instructor magnanimously allowed me to stretch this into winter. So here I am, finally on Prozac and not a campaign in sight. Any of the ongoing campaigns of one of the various non-profit groups could certainly have filled the bill; however, I did not find one that I could support. I suffer from a sad lack of idealism. As the pressure increased, I realized that the one thing that really worked my nerves, to put it gently, was how people allow themselves to be terribly under-informed. So pull your little heads out of the sand and run, little ostriches, RUN! I've formed my own personal campaign of information dissemination.

As the leader of RANCOR (Rectitude And Nicety Can Obstruct Regime), I feel it is my duty to show you where you can find information. This week's topic is our new leader, President George W. Bush. I thought I'd just get it out of

the way now so that we can talk about more important issues later. Even with all of the news coverage, it is possible that you may not know all of what is going on, especially if you are like most of the people in my program who, after being glued to CNN for that whole week in November, are sick and tired of the talking heads. The first source is the website www.transitionwatch.org. This is a site created by the American Civil Liberties Union, Greenpeace, Feminist Majority, and the International Campaign for Tibet in order to monitor Dubya's first hundred days. For the armchair activist, the groups also include form emails that can be sent to the participants of any hot issues; i.e., I emailed the Senate Judiciary Committee to protest the confirmation of John Ashcroft. Not that it worked, but I feel all warm and fuzzy inside because I actually did something. A far more vitriolic site is www.bushwatch.org. I'm not sure who runs it, but s/he/they have some definite opinions and don't let The Man get away with anything. BushWatch has quite a few pages and a great list of links to all kinds of sites.

Once you've read all about how our lil' patch o' land is becoming a daycare for the damned, go to www.george-w-dance.homepage.com. At least you'll laugh before it's Koolaid time.

Fine Host Food Service

A Worker's Point of View

by Jeremy Edwards

After reading recent articles about Fine Host in the Cooper Point Journal, I feel compelled to submit my point of view as an employee. As I am not a fan of corporations, I am pleased that critical articles are being submitted on the subject. However, I am beginning to feel that there is some amount of misguided anger directed at the employees of Fine Host.

I would like to begin by saying that the food service workers do the best they can with the ingredients they have and the short amount of time they are allotted to make the food. Besides raising prices, Fine Host is trying to make up for its lack of profits by cutting workers' hours and not replacing workers who quit or get fired, thereby increasing the responsibilities of the remaining employees. The increased workload is a major factor affecting the quality of the food. Additionally, it should come as no surprise that very few people are excited about working for seven dollars an hour, which is about what the average Fine Host employee makes.

Next, I would like to respond to certain comments made about Fine Host employees by pointing out that food service workers are not the servants of the students, faculty, or anyone else. We are human beings who deserve dignity and respect. I believe that it is very selfish for

people to assume that just because we are forced to sell our labor to subsist, that we should pretend that we are well when we are sick or happy when we are not, simply because they want their service with a smile.

Many food service workers, including myself, believe that the best solution for workers and students would be a state-run food service. First of all, workers would be a lot happier receiving state worker wages and benefits, and a lot more attention could be paid to food quality by decreasing employees' workloads with a slightly larger workforce. Also, I believe that a state-run food service would have a lot more accountability than a corporation, therefore giving students more of a voice in the type of food they are served.

However, *WE DO NOT HAVE MUCH TIME* if we want this to happen; we have to let the Disappearing Task Force and the administration know what we want. I believe that the best way to decide how to go about this is for workers and students to start working together as soon as possible.

On Friday, February 23, in the Library Lobby at noon, there will be a student/worker forum to address this subject. If you want to have a voice in the future of the campus food service, please show up or call 867-0419.

Update: Anti-Sweatshop Campaign

by Steve Karmol

In the last couple of weeks, the Evergreen Students Against Sweatshops (ESAS) and supporters have been working to raise consciousness on the issue of sweatshop purchasing at the TESC campus bookstore. More and more members of the campus community have simply been asking, "Why won't the administration respond to the ESAS proposal, an effort to stop the sale of sweatshop-manufactured garments in our bookstore?"

In the administration's formal response to our proposal, they advocate the creation of a "bookstore purchasing practices study group." This study group would be composed of two students, two faculty members, the bookstore manager, and the Vice President for Student Affairs. They would supposedly research whether leaving the Fair Labor Association (FLA) and joining the Worker Rights Consortium (WRC) is the best way to make sure TESC apparel is not manufactured in sweatshops. The administration's major criticism of ESAS' proposal is that our recommendation to do just that did not represent campus opinion. Essentially, they say, our outreach work was inadequate because it did not inform enough of the campus community. And they propose to solve this shortcoming by creating a tiny research enclave beyond the participatory reach of 99.9% of Evergreen faculty, staff, and students?

As we reported in our February 1 article, our polling data clearly suggests the vast majority of the TESC community members (over 92% of those polled) support joining the WRC and leaving the FLA. The administration has seen the survey results and has shown little interest in the facts about campus opinion on the issue that they present.

Why have hundreds of community members stated that TESC should leave the FLA? The FLA Workplace Code of Conduct provides inadequate protection for workers' rights. Women's rights are not covered

within the Code's mandates; the right to organize unions and bargain collectively with employers is provided for in weak and abstract language; and justifiable circumstances for forced overtime consist of merely "extraordinary business circumstances" (FLA Charter, p. 23). In addition, the FLA Code does not provide for the full disclosure of factory locations and does not include the concept of a living wage.

This is to say nothing of the FLA's highly questionable proposed monitoring system. The FLA certifies a corporation as sweatshop-free after it inspects only 10% of a corporation's factory locations—locations actually chosen by the corporation being monitored! These inspections are announced and scheduled up to weeks in advance. To top it all off, the FLA mandates for the corporations themselves to hire supposedly independent monitors. Obviously, concerns arise over possible conflicts of interest.

Why should TESC continue to pay membership dues and give support to an organization with such omissions and loopholes when dozens of other colleges have seen through this farce and left the FLA? Few people would argue in favor of the existence of sweatshop labor, much less volunteer TESC support for such debauchery. Even the administration has said as much.

Basically, it comes down to this: What is the most effective method of eliminating sweatshop-produced garments from our bookstore shelves and hangers?

To answer this and other questions, the Evergreen Students Against Sweatshops invite you to a town meeting **Thursday, February 22 at 12:00 PM in the Library Lobby**. If you want to know more about what's going on, ask an administrator a thing or two, or participate in open discussions on where we - as a campus community - go from here, stop by the meeting and speak your mind.

Where to smoke or where not to smoke? That is the question

I followed through on my letter to the president, Les Purce, to see how the effort to move the ashtrays from in front of the Library and the CAB was going. I went and had a nice chat with John Carmichael, the Administrative Secretary to the president. John thought it would be beneficial if I went and talked to Robyn Herring, Evergreen's Health and Safety Coordinator, about moving the ashtrays and designating a smoking area that would not impact non-smokers. So I did. I had a nice chat with Robyn, who told me that she has requested the formation of a Disappearing Task Force on the subject of smoking on campus,

because she gets complaints all the time about the smokers who stand in front of entrances and share their smoke with the non-smokers. I discussed the idea that prospective students visiting Evergreen are forced to walk the gauntlet into the library and the CAB, and how that doesn't jibe well with Evergreen's reputation for being concerned with environment and all. That must turn off some of these prospective students and could be a deciding factor in their choosing another school. Robyn thought that it would not be enough to move the ashtrays from in front of the library and the CAB because the smokers would

continue to smoke there anyway, and they would use the ground as their ashtray. Additionally, she said, enforcement would be a problem. I suggested the campus cops could stand at the entrance and discourage the smokers, because, after all, what do they do all day, anyway? She didn't think it would work. She asked if I would be willing to be on the Disappearing Task Force on Smoking. I was reluctant, because I don't want to become part of institutional inertia, but I said if it would help, then o.k. More importantly, however, Robyn shared with me the root of the problem: WAC 296-62-12005.

It seems that in 1986 when smoking inside public buildings was banned, WAC 296-62-12005 was created. It is vague, and does not specify how far away from a public building smoking should be. Being an optimist, I saw that it would probably be easier to lobby the Washington legislature to change WAC 296-62-12005 than it would be to move the ashtrays from in front of the library and the CAB. So I wrote up a letter requesting that there be a law prohibiting smoking within 100 feet of a public building, and I went up to the Capitol to lobby. I learned that there are 3 smoking bills already, one of them banning smoking

in restaurants. Unfortunately, the Republicans are blocking them, so the legislature probably won't be voting on them. So I have thought up another possible solution: The student code of conduct. The student code of conduct, in a broad fashion, requires students not to infringe upon or impede the educational experience of other students. If you are a smoker, are you living up to the student code of conduct when you smoke in front of the entrance to a building on campus? I think not.

Jed Whittaker

Hey Evergreeners! I know you're opinionated, dammit, so let's see some of those radical viewpoints we're so infamous for. Write a letter, start a column, write an article on something that pisses you off, write one on something that makes you happy. Just write. Please write. This is a community forum specifically designed for you to use. Take advantage of this opportunity for publication and get your ideas out there in the open. They don't do much good gathering dust in the back corner of your psyche. Thanks!

-Sky Cosby, Interim Letters and Opinions Editor

Harangue: Minor in Possession

Column by Sky Cosby

Minor in possession... the words still seem to be echoing through my head from last week's blotter, and the week before, and the week before. You'd think that the cops would have figured it out by now. We're college students, and college students drink; that's a fact of life. Some may perceive it as a sad fact, but it is a fact nonetheless. What really gets to me is when one of my neighbors or friends is busted for walking home drunk. They aren't doing anything wrong, for Jack Daniels' sake! Are they hurting anyone else? Are they being out of line somehow? No. The truth is, they're simply trying to get home so they can curl up and go to sleep. Instead, they get accosted by the men in blue, handcuffed, and fugged over by America's big, merciless legal prick. Please excuse my bluntness and profanity; both are quite necessary, I assure you.

So, we drink every weekend and they arrest a couple of us every weekend. Is that it? Are we going to keep doing this to ourselves? Why can't I have a goddamn beer after I get out of class? That's what I want to know. The cop can have a beer when he/she gets off work. Yet we get in loads of trouble for drinking and dancing and having a good time. That's discrimination based purely on age and it pisses me the hell off. I wish that the campus police, instead of bringing the residents of this wonderful place loads of financial and legal crap to deal with, would do something constructive with

their time, because busting the students doesn't float in my pond. Maybe the cops could do something useful, like prevent the asshole high school students from coming onto campus to drink our beer and beat up the lovely ladies (beware Greens, there be trouble afoot). Or maybe they could tend the plants and water the flowers. When something seriously bad happens, the police are a welcome force to have on our side, but when they maliciously single out students to fuck with for no apparent reason, they have taken their authority one step too far. "Oooo, is that marijuana in your pocket? Let's take away all your financial aid just because we can!"

Another thing: blowing the charges completely out of proportion. There's no reason to tack on an extra \$480 to a charge already well over the value of my wallet. Shit, if I had back all the money it cost to bail my friend out of jail, I could eat well for the next two weeks! While we're on the topic, there also isn't anything wrong with stealing food; food should be free in the first place. Do you think we're wealthy enough to shell out \$272 bucks every time we get spotted with a beer? I don't come prowling around your house in the middle of the night trying to bring pain and disruption into people's lives. I don't even know who you are, and yet you have the power to step up to me when I have a beer and say, "Bend over kid, this is just the beginning." That's not right. That's not justice.

Arresting us for M.I.P.s is not productive whatsoever. All it does is piss us off, cost us time and money, go on our permanent records, and detract from our study time and learning process as a whole. Plus, we might have to explain it to our parents when we can't foot the bill for the whole five-ring circus act. "Come on son, there's only three more hoops to jump through, you can make it! Sign here and here and here and here and give us a ton of money for something that shouldn't be illegal in the first place." I say fuck that. I can't believe that the police get paid for such rude and invasive actions, and I certainly don't understand how they sleep at night thinking of all the kids they've screwed over. If the "peace keepers" can legally go after the peaceful citizens of our community, then I say that we are living in an unjust, oppressive place, and that something needs to be done about it.

There are more serious crimes being committed out there in that big, scary world than the few minors drinking and cavorting through the woods here at Evergreen. Go get them, go get the bad guys; quit wasting your time and money on us. We won't stop drinking; we won't stop having fun; we won't bow down to the mighty badge forever. Oh, and another thing: where do they get off charging ten cents for a friggin' paper cup? I think my thoughts would be best summed up by: Stop hassling us, we're busy. We live here, you don't. Get out.

Financial Aid Time Rolls Around

by Obadiah Bowen

How would you like an extra \$1,000.00 in financial aid next year?

Take my case as an example of what not to do. The omission of a copy of my tax return delayed my award. By the time school started and I went to pick up my refund check, I was informed that I did not have an award ready. To make a long story short, by the time I caught it, I had lost two crucial awards that I had been entitled to: The Evergreen Tuition Waiver, and my Work Study award—not just for one quarter, but for the entire year, totaling over \$6000.00 for the year! Don't let this happen to you; it's a rough situation to be in.

It's easy; just don't procrastinate when it comes time to get your documents in to your friendly financial aid administrator. It really is that easy. It is time to do your part in getting your financial aid package ready for next year. Don't put it off. Remember, financial aid awards are given out on a first-come, first-serve basis. Pushing or missing deadlines can cost you literally thousands of dollars in aid.

The unavoidable: securing financial aid is a process, which always entails a series of steps.

Supply the necessary paperwork, fill out and sign the required forms, and turn them in. Sound familiar? Good; it should. That's because the process is similar to some degree for all of us. You might have to get a parent's signature or have a professor sign to verify that you got credit from their class. The specifics may vary; however, you will have to complete the process for every quarter that you expect to get aid. Since you're going to have to do it anyway, complete the process early. Both you and your financial aid administrator will thank you. Virtually all of the various awards you could be eligible for are awarded to those who apply first. When the funds run out, as they often do, so does your luck. Translation reads something like this: the sooner your file is in order, the more aid you'll qualify for.

Another compelling thing to remember is that the process does not end when you turn in your forms. There are many people higher up the bureaucratic ladder that still have to do their jobs. After your forms are reviewed, it might be determined that more information is necessary or an answer was left blank. That is why it is also extremely important to check with your financial

aid advisor a couple times between the time your forms are completed and the quarter to be determined begins. Do not wait for someone to contact you if something is out of order; it could cost you hundreds, if not thousands, of dollars in aid. Other things that can help expedite the process include:

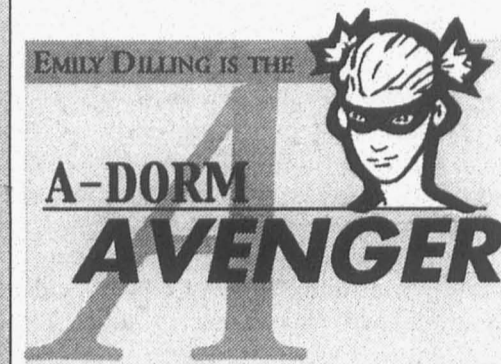
- Keeping the financial aid office up to date on your vital statistics, such as current phone number and address.

- Keep your eyes open for any changes that might affect you, as there is a completely new computer system coming by mid-spring.

- Don't forget to fill out a data sheet (available at the F.A. office)

- Check your SAR (Student Aid Report) for mistakes or changes and make necessary corrections

- Try to get everything in by early this week, as financial aid staff is busy near deadline time.



A Brief Opinion of Time

For the first time in a long time, I've been thinking about time—where it goes and how it changes. I am caught by thoughts of time and how its meanings have changed to me. Often, I wonder what I'm doing with my time here. I wonder if the time I own now is being well spent, and whether or not my future will allot me more freedom. My answer is always no. I will not be free to do what I wish with my time until I delegate alternatives and decide how to avoid wasting my time. Perhaps the time I am using now will enable a better time in my future, but that does not assuage anxiousness, unrest, and my occasional discontent.

The saving grace is that I'm not alone in this sentiment. I've talked to so many people who feel as I do. They feel that they are completed and the quarter to be determined begins. Do not wait for someone to contact you if something is out of order; it could cost you hundreds, if not thousands, of dollars in aid. Other things that can help expedite the process include:

- Keeping the financial aid office up to date on your vital statistics, such as current phone number and address.

- Keep your eyes open for any changes that might affect you, as there is a completely new computer system coming by mid-spring.

I am often frustrated by the amount of time I spend, and am most likely going to continue spending, on school. But what frustrates me more is that I feel that college is something that I have to get over with, that it's not looking any better for me—unless I design a contract that takes me far away from here for awhile. I guess when you really think about time, you realize that a minute can change a year, and time is really more affected by you than the sun. When I think of time that way, I realize that wasting it for the sake of the possibility of a better future isn't worth it. How are you going to know that future when you get to it, and how are you going to acknowledge happiness and self-actualization if you've spent your life preparing for it rather than experiencing it?

BUBBLE

continued from page 6

GlaxoSmithKline. 87 protesters were arrested. (more at /www.sltrib.com/)

Environmental

The UN released a report warning that the melting of arctic ice at the poles has great potential to exacerbate global warming due to the significant stores of carbon in the frozen ice, estimated to be about 14% of the terrestrial carbon on the Earth. Studies have projected temperature increases of up to 10° Celsius (18° Fahrenheit) in arctic regions over the next century, with potentially catastrophic effects on the Earth's glacial formations. Another UN report released this week warns of potentially devastating effects of global warming on agriculture in tropical regions, where many crops are growing at the high end of temperature range.

(more at /www.afp.com/ and /asia.dailynews.yahoo.com/)

Reporters have uncovered a large unpublished FDA study commissioned to access consumer opinion on the labeling of genetically engineered (GE) foods that indicated widespread support for labeling as well as outrage at the current lack of labeling of GE products. Labeling of GE foods is mandatory throughout Europe and much of Asia. (more at /www.washingtonpost.com/)

Following continued outbreaks of Mad Cow Disease which have wrecked consumer confidence in industrial agriculture, the European Commission has officially endorsed small scale organic farming as a necessity for the

health of the environment and food safety. (more /ens.lycos.com/)

Protesters dumped more than a ton of GE Starlink corn at the door of the EPA last week in protest of the EPA's support of GE foods and the naming of a former executive of Biotech giant Monsanto as Deputy Administrator of the EPA. Starlink, an unapproved variety of GE corn produced by Aventis corporation, was found throughout the food supply last year. (more at /ens.lycos.com/)

After a 15-year international moratorium on commercial whaling, the International Whaling Commission is considering removing restrictions on whaling. Norway and Japan have already violated the moratorium. (more at /ens.lycos.com/)

A new report by the Audubon Society warns that the National Wildlife Refuge system is in a state of severe crisis, faced with pollution, under-funding, and invasive species. The National Wildlife Refuge system has a backlog of \$1.6 Billion in unmet maintenance costs. (more at /ens.lycos.com/)

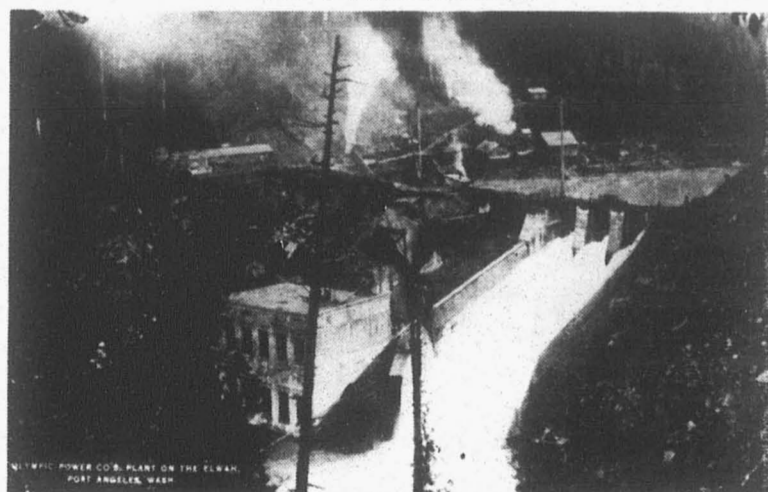
(more at /ens.lycos.com/)

Beyond the Bubble is published each week as a service from EPIC, the Evergreen Political Information Center. EPIC also publishes a weekly email update on politically related events happening around our area and provides resources for activists at Evergreen.

EPIC meets each Wednesday in Library 3500 at 2pm. To receive EPIC's email update, to make comments on the news, or for more information on EPIC, please contact epicupdate@hotmail.com or 867-6144.

I'LL NEVER SEE THE SALMON COME BACK THE WAY IT WAS IN MY TIME. I'LL NEVER SEE IT AGAIN. BUT I WANT MY GRANDCHILDREN AND GREAT-GRANDCHILDREN TO SEE IT. LET THEM SEE WHAT I SAW, AND IT WAS PLENTIFUL...

© REINACT CHARLES FISHMAN, KILLAMN EDEK



5 Screenings! UNCONQUERING THE LAST FRONTIER

The historic saga of the damming and undamming of Washington's Elwha River.

OLYMPIA: Thursday, February 22, 7:30 p.m., Capitol Theater, 206 5th Av. S.E. 57.

SEATTLE: SPECIAL BENEFIT Friday, February 23, 7:30 p.m. \$20 adv., \$25/door

With a performance by the Lower Elwha Klallam Tribal Dancers, Tribal Chairman, Russell Hagler, River Restoration Coordinator Michael Langland, and filmmaker Robert Lusdahl will answer questions. Proceeds benefit Lower Elwha Klallam cultural affairs programs. Reception before the show at 6:30 p.m.

And *2 SCREENINGS* on Saturday, Feb 24, at 7:30 and 9:30 p.m. 57.

Broadway Performance Hall 1625 Broadway.

PORT ANGELES: Friday March 2, 7:30 p.m., Peninsula College Little Theater, 1502 Lauridsen Blvd. 57.

RESERVE YOUR SEATS NOW! Call Ticket Window (206) 325-6500. (Seat/Olymp only) or visit www.ticketwindowonline.com. For Port Angeles call 1-(866) Go Elwha, toll free.

BLOTTER

continued from page 3

3:56 p.m. Did you have to steal that person's bike? No, don't give me that look. That was a very bad thing to do. Would you like it if your bike was stolen? I didn't think so. Now give it back pronto. I mean it. 11:49 p.m. There's beer here, beer there, beer everywhere in Housing, but strangely only two citations for MIP tonight. While I was unable to get the second report, I can tell you that the first person has, unfortunately for her, been busted for drinking before.

February 11

3:20 a.m. Assault in Q-dorm occurs over the weekend. See warning on this page and article on cover next week.

1:17 p.m. What follows is based on real events, a sketch if you will, for the upcoming movie, *Police Blotter III: Final Judgment*. They hopped in their cars, racing to the scene of the crime. "How could anyone do such a thing?" one said, his eyes fierce with the knowledge of impending crime and justice meted to deserving foes. "We're gonna nail those burglarizing bastards," said another, only one day away from retirement. They showed up at the Tacoma campus, prepared to respond to whatever cruelties the world would throw at them. "Sorry boys," the officer at the scene said. "Just a false alarm." And they walked away, knowing that one day, it wouldn't be.

6:26 p.m. Unknown things are taken from the lab annex. But if it's that damn floor polisher again, someone has way too much time on their hands.

February 12

12:48 a.m. Yet another person gets a MIP, proving that it's never too early or late to start drinking.

2:24 a.m. One would think this would be the perfect time for an alarm to go off, if one were foolish enough to, speaking hypothetically, blow smoke into a fire alarm.

8:54 p.m. According to T. S. Eliot, "Only those who will risk going too far can possibly find out how far one can go." A young man was willing to do just that at the Branch, when in act of immense daring and no doubt great amounts of experience, he tried to glue a quarter to the floor. Because there's nothing more fun than trying to get money that you'll never be able to have. The adhesive malefactor escapes citation for malicious mischief when he removes said quarter off the floor, leaving no damage to the tile.

SAGA/ DEBACLE

continued from page 5

posters was very straightforward--they were there to make the Evergreen community aware of an upcoming performance. When questioned as to the motivations behind the penis, Rodda said his main drive was that he was "curious" and "wanted to see what would happen."

What happened was the forum --a good thing, and many hurt feelings, confusion and anger--bad things. It unfortunately didn't help matters any that Rodda is an admittedly ill-prepared public speaker. It actually led to some confusion instead. Rodda at one point tried to explain how he had tried to empathize with whoever may have taken down the vagina out of aversion to an image of female genitalia. Perhaps he was subsequently grilled for further explanation a little too rigorously, but then again perhaps he should reconsider that empathy. I feel that no one should try to foster empathy for someone else's prejudices.

I think a majority of the people who attended the forum will agree that it was a worthwhile discussion to have. I just don't think a giant penis was the right way to start dialogue. It proved to be a devious element in the meeting, an element which hindered communication. At Sharoni's suggestion, the emotional state of the participants was recorded on a blackboard. And while there was no absolute line drawn in the sand, almost all positive and neutral comments came from men, but the comments from women were almost entirely negative emotions. Make Mars vs. Venus jokes if you must, but there was a pretty obvious difference of opinion.

However, people can only discuss and debate a topic for a set amount of time before the progress made will come to a halt, and as 2:00 p.m. rolled around that Friday, we all recognized the end of the discussion. Before we left, the group's emotional state was once again recorded--for the most part, people felt uneasy--the dialogue had been started but was still unfinished. A number of issues were posed, but very few answered. The primary question that remains unanswered for me is: if an aversion to the female genitalia can be understood, why replace the missing vagina with a penis--why is the one better than the other? Wouldn't there also be an equal aversion to the male genitalia?

More related articles next week.

Vics Pizzeria

Ana makes a lovely vegan sauce!

233 DIVISION ST NW (360) 943-8044

WALKWAY

continued from cover

there was also to be a tunnel sloping up through the forest floor to compliment the other proposed structures with a perspective on the below-ground environment of our forest. The idea, however, has been put on hold with regard to the difficulty and cost of construction.

It is not that it has been forgotten. The idea of a tunnel is still alive in the mind of Nalini Nadkarni, other supporters of the Evergreen Canopy Walkway, and myself. Perhaps when the walkway is constructed, the Tunnel and the Banana Slug Zoo and Moss Farm and Virtual Forest Project, which have been proposed as possible adjuncts and enhancements to the Walkway, will become realized too. The Evergreen Canopy Walkway would provide a wonderful tool for community outreach by bringing locals, elementary school children from the region, and prospective students to the tops of the trees to gain an appreciation for something they may take for granted. It would also be a boon to the scientific and artistic communities here at Evergreen by providing forest science students with a venue of research and by providing artists with a means to experience the canopy and its unique flora and fauna. The seminar pod would be a place to greet visitors, have a class, or give a lecture amidst the serene atmosphere of the woods. Lastly, the Walkway would be a place for recreation and relaxation for students, faculty, and those who wish to meditate or appreciate nature.

FOR MORE INFORMATION VISIT: www.evergreen.edu/walkway

Explore the Alternatives...

- Conscientiously Selected Nutritional Supplements
- Over 300 Bulk Herbs & Teas
- Cruelty-free Bodycare
- Worldly Incense
- Cards • Candles
- Jewelry • Books
- Feng Shui Supplies
- Gifts to Delight You & Yours
- Massage by Appointment

Open 7 Days (weeknites 'til 8)

RADIANCE
Herbs & Massage

www.radianceherbs.com 357-5250
113 SE 5th Ave, Downtown Oly

Traditions

Cafe & World Folk Art

"Care to know where your money goes?"

Support fair trade with low-income artisans and farmers and you will...

We are:

- A center for fairly-traded products from around the world
- A cafe with good food
- A performance space for concerts, classes, forums, and more

Website: traditionsfairtrade.com

300 5th Ave SW, Olympia • 705-2819

"Just a splash from Heritage Fountain & Capitol Lake"

STUDENT WAKE UP CALL

DO YOU KNOW WHAT'S HAPPENING WHILE YOU SLEEP?

Open letter to the student body and president of Evergreen College,

February 8, 2001

Mr. Joe Tougas
The Evergreen State College
Campus Grievance Officer

Dear Mr. Tougas:

My name is Shasta Smith and I am the Sports Editor for the CPJ, as well as the producer of a weekly sports show that airs on campus and in the community called Shasta's Evergreen Sports Show. In addition, I am a co-captain of the Bak Shaolin Eagle Claw Kung Fu Team, Team Evergreen and a captain of the Men's Soccer team from the 2000 season.

The accusation that I am in violation of TESC's Student Conduct Code WAC 174-120-035 is untrue. On January 29, 2001 I was cited for the theft of a doughnut at the Deli here on campus. The undercover person did not show I.D. or a badge, and asked me to go downstairs and would not listen to me. I told him I had been up all night editing for twelve straight hours and had simply forgotten and would immediately pay. Downstairs, they refused to listen to my comments. They filed a report excluding my information. Officer Pamela Garland was called over. I was asleep by the time Officer Garland got there. I told her my story, and Pam was sympathetic but unable to do anything on my behalf, since Fine Host was unwilling to listen to me. We parted ways, understanding that she would get a hold of me with the upcoming paperwork.

As a prominent member of the Evergreen community, I find it insulting that Fine Host is using me as a scapegoat for their problems of theft in the Deli. The setup that allows for people to wantonly steal is not my fault. I have the money to pay for a 60-cent doughnut; forgetting to pay is not theft. I was awake all night in an editing suite and had not slept for more than 24 hours. I merely forgot and was not given a chance to go pay right away. I even said at the time "Oh, I forgot. I'll go pay now." I was not allowed to do so.

I am not part of the problem Fine Host is addressing. I am an extremely active, vigorous member of the Student Body, the Evergreen Community, and several student groups. My exhaustion led to a simple error that I wished to amend immediately once my attention was called to it. By not allowing me to do so, Fine Host is unfairly persecuting one of Evergreen's best and coming no closer to solving their problems. Their intent is more criminal in spirit than my lapse of attention.

I want to get this problem resolved as soon as possible, as the mere accusation is a slander and affects the reputation of my self and of the organizations that I am part of.

Sincerely,

Shasta Smith
Sports Editor CPJ
Producer of Shasta's Evergreen Sports Show
Co-Captain Bak Shaolin Eagle Claw Kung Fu Team Evergreen
Captain Men's Soccer Team

Cc: Art Costantino, Vice President for Student Affairs

Harmony Antiques & Karinn's Vintage Clothing

Customer Appreciation Day, Saturday, March 10th!

HARMONY ANTIQUES
113 Thurston Ave. NE
Downtown Olympia
OPEN DAILY
(360) 956-7072

Complimentary Batdorf and Bronson coffee served daily.

Your friendly neighborhood antiques, collectibles, & giftware store

THE INTERVIEWS: OWEN O'KEEFE



by: Shasta Smith

I am talking with Owen O'Keefe, a member of Team Evergreen, the Nationally ranked campus kung fu team. Owen is a junior at Evergreen and is next year's student captain for the Bak Shaolin Eagle Claw Kung Fu Club. Owen studies computer science.

CPJ: So Owen, can you tell me how you got started with kung fu?

Owen: I was in the weight room, saw one of the kung fu fliers, and just had to give it a call.

CPJ: Tell me about the last year of competition you had with Team Evergreen Kung Fu.

Owen: It was pretty intense. It was definitely an experience I'd never had in my life; it was very enriching, challenging, and testing.

CPJ: How does it feel to be part of a team?

Owen: It's awesome. Because of the

intense training, we have a cohesive team here at Evergreen. There have been some people from top Division One hockey programs that have come and trained with schools of ours in the past that have stated that we train harder than they do, and I believe that. It is a cohesive team, and the friendships and that type of bond is strong through our lives.

CPJ: What does kung fu help you with?

Owen: Besides the obvious - the physical conditioning, the mental clarity, the hand-eye coordination - it helps focus and discipline all aspects of life. I have spoken to many people about it, and the two hours of training we do, where we're very focused, helps when we go to read a book or study or do something in front of a computer. It's awesome.

CPJ: How do you see kung fu helping you?

Owen: There are a number of members who have graduated

Evergreen and other universities who are successful in their field because of the discipline and focus it has given them, and right now while I'm in college I get advice from them. Once I get out of college, I'm sure that it will help me land a job and that sort of thing.

CPJ: How do you feel about being the student captain who will be instructing next year?

Owen: It's great learning to teach people. It makes you examine what it is that you're doing, makes you break things down analytically and really think about it.

CPJ: What can you say to continuing and incoming students who may want to learn kung fu?

Owen: One of the biggest things kung fu has done for me is to help me focus and do better at studies. It makes you strong and helps you with the will and discipline to achieve your goals.

Here come the Northwest Conference finals. The Evergreen men's and women's swim teams are getting ready to compete in the regional finals here in our own pool. The swimmers are excited yet ready to pit their skills against the best in the area. The teams' swim times can give them further qualifying times in the upcoming nationals, but for this competition we are guests in our own house.

Coach Bill Lash's club team is meeting twice a week in our gym and even scrimmaging local college and club teams. Coach Lash's training is open to any Evergreen students who want to play volleyball competitively. This is a golden opportunity for you volleyball players who want to get time in before the season begins this August.

WOMEN'S VOLLEYBALL

by: Shasta Smith

WOMEN'S RUGBY

by: Shasta Smith

The women's rugby team has connected with their new coach and the team is rolling forward. The team is comprised of mostly new players that are excited to be out and playing rugby.

It is a great mix of girls, so all you women that want to go out and hit something, go out and play rugby; you won't be sorry.



The Women's Rugby Team's new Head Coach, Trevor

OUR FINE HOST

by: Shasta Smith

A musician in my hometown once wrote, "Well it feels like we're living in a police state." Fine Host, the company that runs the Deli and the Greenery on campus, has begun a battle against the student body at The Evergreen State College Campus. They have instituted a Gestapo-like setup with undercover people watching everyone. The Deli setup is terrible. People can meander around munching until they find something they want to eat; there is no flow of traffic, no set entrance and no set exit. Numerous students and community members I have spoken with have gotten food, walked to a table, sat down, and started eating before they even realized they had forgotten to pay. They then have to get up and go wait in line to correct the blunder that is created by the lack of structure.

Fine Host is scapegoating the students for their losses. Perhaps they have some sort of grudge for the complaints people have about their food and the way they treat their employees; I don't know. But they are making examples of people when it's mostly the setup that is the problem. To minimize theft and error the structure of the deli should be better.

Back to the dime-store-rent-a-cop-undercover-out-of-towners. These people are masquerading as undercover cops, threatening and intimidating Greeners to follow them somewhere and be detained. They don't show a badge or identification at any point. Isn't that a false arrest to detain someone officially without any certification? Then they write up a report while you wait for a cop to arrive. These rent-a-goons are treating students like they are criminals already, like the Nazis treated the Jews... I can say that, I'm Jewish.

What is Fine Host doing treating Evergreen students like second-class citizens? Who do they think they are, acting like cops in the movies? Where do they think they are, some third world country where they can just run over whomever they want? These are Evergreen students they are handcuffing. If someone honestly tells you they forgot and they will go pay... Let them! What is this, zero tolerance? One strike, go to jail? Thank you Miss Reno. These are college students, not cat burglars or hardened criminals. Who knew about this when it began? How did it progress to such insanity? Is our Fine Host acting independently, or did they get the OK from somewhere high up in the college?

OK, so back up and put this in the perspective of the "real world"; you know, the one you reach by driving about a mile down the road, right. So anyway, these felons get their citations sent to the Thurston County District Court and lo and behold, the prosecuting attorney says the same thing that some campus police officers are saying, and that the administration thinks is the best thing to do: deal with this internally, use the grievance process here on campus, which Fine Host obviously sought to usurp. The court apparently doesn't have the resources or the time to waste clogging up the legal system with a cartload of pettiness.

What redress must Fine Host give for treating us like we are criminals? It is time to activate; it ends here.

MEN'S BASKETBALL

by: Gin Harbold and Shasta Smith

photos by Ezra Small

Evergreen Men's Basketball team earned its second consecutive win on February 9th. The game was played at the Thunderdome in Portland, Oregon against the Cascade Thunderbirds. The game was a clear victory for Evergreen who won the game by 16 points (89-73). The team shot 47 percent from the field, 39 percent from three-point range, and 70 percent from the foul line.

Andre Stewart was the leading scorer in the game with 26 points. He had 8 rebounds, 2 assists, and 2 steals as well. Trelton Spencer was close behind with 24 points, 2 rebounds, 4 assists, 2 steals and a block. Garret Zwar scored very well with 14 points, and Jimmie Richardson added 9 points.

On February 10th, the Evergreen Men's Basketball team faced off against Warner Pacific in Portland, Oregon. The Evergreen team, which recently defeated Cascade and

Kirkland, continued to outshine its competition with a 98 to 94 win. The team shot 52 percent from the field and an outstanding 85 percent from the foul line.

This close game was exciting all around. Not only did Evergreen come back to win after being down by as many as 14 points in the first half, but Andre Stewart broke the college's single game scoring record by posting a big 42. This beat Trelton Spencer's previous record of 37. The question now is - will Spencer reclaim the scoring record or will Stewart hold on, perhaps even beating his own record? On top of his great scoring, Stewart grabbed 11 rebounds and had one steal. Spencer performed excellently as well with 28 points, 5 assists, and 4 rebounds. Garret Zwar has been displaying some hidden talent lately. In his last two games he has reached double digits with 11 and 14 points respectively. Jimmie Richardson did

his part to hold the team up with 11 points, 4 assists, and 2 rebounds.

On the 13th of February, the men faced Concordia here at home and won 66 - 63. Evergreen came from behind, led by Andre Stewart's 20 point second half performance. He ended with a game high 29 points. Concordia had a last second three point attempt that came off the rim and couldn't get another shot off. This is the fourth Cascade Conference win in a row for the men. They currently are tied for fifth in the conference with two big matchups coming this weekend.

Hopefully Evergreen will be able to continue their winning streak through the two remaining regular season games on February 16th and 17th. These are both home games, and on the 17th there will be a special treat. For the first time ever we will see the Evergreen cheerleading squad in action, so put on some face paint, grab your greens, and come cheer along with them.



Positions Available!

If you are reading this paper (which you are right now) then you must have some idea of how we can be better.

Apply now.

Applications are available at the CPJ office in CAB 316

Letters and Opinion Editor:

7 hrs, \$47.04 a week

The L&O Editor is responsible for the forum that is the L&O pages. This person oversees the solicitation of letters and opinion pieces, makes sure pieces are free of unprotected speech (such as libel, invasion of privacy and copyright infringement) and of CPJ guidelines concerning such things as excessive gratuitous profanity and malicious attacks. L&O Editor prepares submissions for printing and oversees the design of the L&O pages.

Layout and Graphics Editor:

5 hrs, \$33.60 a week

The Layout and Graphics Editor works with page and section editors, the editor-in-chief, managing editor, and the other Layout and Graphics Editor to design and put together CPJ pages using PageMaker and PhotoShop.

Applications due FEB. 20

AT 5 P.M.

WOMEN'S BASKETBALL

by: Shasta Smith

The Evergreen women hosted their final two home games of the season on February 9th and 10th. They played Cascade on Friday and Concordia on Saturday.

On Friday the 9th, Cascade won 57 to 56 in a game that came down to the last second. Evergreen led all through the second half, but Cascade chipped away at the difference until they were down by one with 40 seconds to go. Evergreen missed a pair of shots and Cascade missed one before one of the Cascade girls was fouled and put the game away with two free throws. Michelle Ramsgate led

Evergreen with 16 points and 7 rebounds. Heather Johnson and Linnaea Jablonski both had double-double nights, Johnson with 15 points and 11 boards, Jablonski with 10 and 10.

The next night Concordia came to town and won 70 to 44. Johnson had 21 points to go with her 7 rebounds, and Michelle Ramsgate had 11 points to go with her game high 8 rebounds. This game marked the end of Evergreen's home games for the season. I had a chance to talk to some of the seniors that are done after this season. Rebecca Henrie was sad that they lost but had a fun three years. Heather Johnson liked meeting all the girls and playing again. Lindsey Lawrence had fun playing with Evergreen; the senior enjoys road trips with the girls the most, so it is somehow fitting that her season ends on the road. More on that next week.



Linnaea Jablonski ready for the inbound

The Evergreen women on D

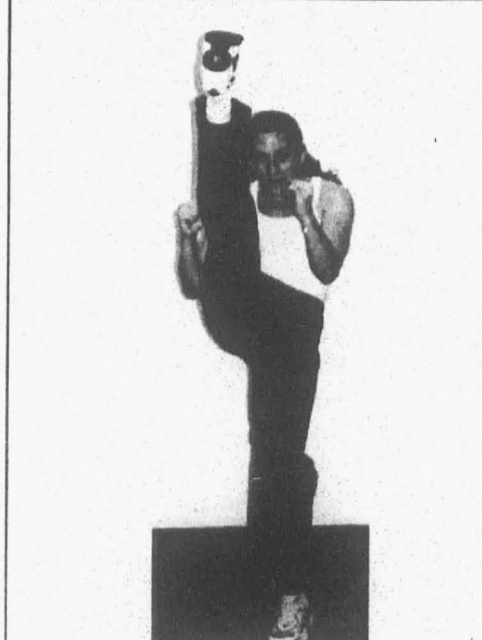


WATCH SHASTA'S EVERGREEN SPORTS SHOW

CHANGING THE FACE OF SPORTS AT EVERGREEN

On-campus
CHANNEL 18
TUES-WED-THUR 11 AM
CHANNEL 16
ALL WEEK 5:30 and 10:30 PM

Off-campus
TCTV CHANNEL 3
MON 11 AM FRI 6:30 PM



SHAOLIN EAGLE AEROBICS for WOMEN

Shaolin Eagle Aerobics for Women is now being offered at Johansen Ballet School. The class is taught by Jessie Smith, #1 rated fighter in the Pacific Northwest. The class is 9:30 - 10:30 AM. Come for the fun, fitness, health, and self defense. There are also beginning and advanced classes on campus in the CRC at 5:30, 6:30 and 7:45 PM. Instructor: 352-5773



SPORTS SCHEDULES

BAK SHAOLIN EAGLE CLAW KUNG FU
- beginning classes weekdays at 5 PM at the Longhouse
SHAOLIN EAGLE AEROBICS for WOMEN
- classes in the CRC
Jan. 22 - Feb. 26;
at 5:30, 6:30, and 7:45 PM
WOMEN'S BASKETBALL
- 2 away games this week
- Feb. 16 vs. Albertson at 6:00 PM
- Feb. 17 vs. Eastern Oregon at 7:30 PM

MEN'S BASKETBALL
- 2 home games this week in the CRC
- Feb. 16 vs. Albertson at 7:30 PM
- Feb. 17 vs. Eastern Oregon at 7:30 PM
SWIMMING
- Northwest Conference Championships Feb. 15-17, races start at 10 AM, finals at 6 PM at the CRC pool
TENNIS
- contact Rick Harden ext. 6858
INDOOR SOCCER
- indoor soccer Mon.-Wed.-Fri.; starting at 6 PM in the Pavilion
CREW
- March 24 regatta at American Lake, Tacoma against PLU/UPS

WOMEN'S RUGBY
- practice for the spring season
Wed. - 2:30 to 4:30 pm
Sun. - 1 pm to 4 pm
WOMEN'S VOLLEYBALL
- Tue./Thu., 7:30 pm; club playing, all welcome.
CROSS-COUNTRY
- Wed. Feb 21st 4:30 PM lower lobby CRC go run-Varsity meeting 5:15 PM in CRC 109

Chrysalis
111 Legion Way
Downtown Olympia
(360) 753-5527

WE'VE MOVED TO A BIGGER & BETTER LOCATION WITH COOL STUFF.

TUES-THURS. 10 AM-8 PM
FRI & SAT. 10 AM - 10 PM • SUN. NOON - 5 PM

- * BEADS *
- * INCENSE *
- * CANDLES *
- * STICKERS *
- * BUTTONS *
- * CARDS AND POSTCARDS *
- * QUEER GEAR *
- * GLASS ART *
- * STERLING SILVER *
- * AND A LOT MORE!!!!

Attention Lovers of Hispanic Culture

Presentation and Poetry Reading

February 16th 2-3pm

Presentation by Alurista to students of the following programs:

Hispanic Forms and Life, Reading South and North, Reading and Writing, Contemporary Prose,

Other members of the community are invited to attend.

7:30 - 8:30pm Poetry Recital Location: Lecture Hall 1

Books by Alurista are available in the Evergreen Bookstore during the week of Feb. 11th.

Thu, Feb 15

3:30 P.M.
Olympia's own "DRUMMER DANGER DUO" leads a West African dance workshop in CRC 116. Bring loose clothes and water.

7 P.M.
Community entertainment is more than just freak shows and lynchings. It's also an event at the State Capitol Museum, hosted by Ann Shipley and featuring 11 sorts of different local entertainment types. Free!

also at 7 P.M.
The Olympia Barnes and Noble Bestseller's Bookclub meets this evening to "explore" Tara Road by Maeve Binchy. Don't miss it, not for the world. For info on this and other B&N events, call 236-1541.

Fri, Feb 16

7 P.M.
Subdivide! And Conquer! See this and other environmentally-oriented films at the Capitol Theater. Check out the Oly Film Society guide for a complete schedule. Costs anywhere from \$4 to \$18, depending on who you are and how many movies you wanna see.

10 P.M.
Booze! Bands! Dead Moon and their esteemed guests appear at the 4th Ave. Tavern, right now! \$6. 21 or fake ID. I mean, no fake IDs, kids! 360-786-1444

Tue, Feb 20

Hey, Alex Steiner, Concert Promoter Extrordinaire! This one's for you! SPIV's and Sam Densmore's Silverhawk's records come out today. As your release says, we've had "enough lead time to do something with them." Get an interview or something next time.

Wed, Feb 21

Noon
Campus grievance officer and faculty Joe Tougas offers "philosophical reflections on the inevitable tensions in a pluralistic culture." Free, at the Oly Timberland Library on 8th Ave.

5 P.M.
The Native Student Alliance and the Environmental Resource Center sponsor a program in the Longhouse Cedar Room: First Nations Defend North America's Last Pristine Rainforests. The show really gets going around 7. Potluck!

5:20 P.M.
Before Cat Stevens renounced his rock n' roll ways, he did the music for the movie "HAROLD AND MAUDE," which, funny enough, Mindscreen is hosting tonight in Lecture Hall 1. It's free and so is the popcorn. Call x6412.

Fri, Feb 23

7:30 P.M.
At Traditions Cafe, the Playback Theatre is puttin' on a show. Donations go to a good cause.

9 P.M.
Not four but FIVE FINGERS of FUNK with special guest MOTHER'S FRIENDS play at the CRC tonight. Tickets at the door, \$10 for boring regular people and \$7 for boring college kids.

Sat, Feb 24

Noon
The Campaign for Access and Reproductive Equity (CARE 2000) is showing two films at the Capitol Theater: *Legal, But Out of Reach* and *Abortion Denied*. Free to the public. Sponsored by a whole bunch of people. 1-800-822-7857.

2 P.M.
"Images of China," a puppet show presented by Arts and the Child (class), is goin' down in the House of Welcome. Not just for kids. Award winning puppeteers.

9 P.M.
Cumbia, Merengue, Racheras, Salsay mas with DJ Olivia Salazar. LIB 2000. Dance until you drop! Call x6583.

Ongoing Stuff

Free Money! The Washington State Employee's Credit Union is giving out scholarships to people going to college Fall 2001. Applications come out TUESDAY FEBRUARY 20 at all WSECU branches. Blah blah, apps must be postmarked by April 16, blah blah. Call 943-7911 x261.

"Janie's Fortune," a senior thesis production featuring theatre, music, and video opens THURSDAY FEBRUARY 22 at 8 P.M. and runs through the 24th. It's FREE and it's in the COM Building's experimental theatre. Masterminded by Sindi Somers, the show is not for babies or kids under 10. They wont let 'em in, really. call 867-6833.

The Olympia Film Society is going ultra mad crazy yo this month. "Shadow of the Vampire" starts FRIDAY FEBRUARY 23 at 8 P.M., and runs through March 2. I wanna see that yo. The fun doesn't stop there: double featuring with that movie I was just talking about is "Requiem for a Dream," which is about drugs or something. Yo.

The Evergreen Queer Alliance is hiring two 9hr./wk. positions. Apps (available in CAB 320) are due FEBRUARY 23rd. Interviews will be on Feb. 27 at 5 P.M., or some other time if you set it up. Applicants must be available for 2001/2002.

Student Group Directory*

Amnesty International
International human rights org. working to free prisoners of conscience, ensure fair trials, and promote justice.
Meeting times: 5 P.M. every Monday in CAB 310
More info: x6724

ASIA
Asian Students in Alliance welcomes everyone.
Meeting times: 1 P.M. every Wednesday in CAB 320
More info: Emiko Atherton, Miral Ghimire at 867-6033

Bike Shop
We are a volunteer operated, do-it-yourself bike shop.
Meeting times: Call or stop by; schedule is on door
More info: Ari or Jayro at 867-6399

Capoeira Angola
Meeting time: Thursday 6:30 P.M. in Lib 4300
More info: C.J. Hanekamp at 866-4811 or hanekamc@evergreen.edu

Common Bread
We are a Christian Community working for justice and peace.
Meeting times: 5 P.M. every Monday in CAB 110
More info: Julie Boleyn 943-9144

Evergreen Animal Rights Network
To promote the ethical treatment of animals.
Meeting times: 5:30 every Tuesday in CAB 320

More info: Laurel and Tom 866-6000 ex.6555

Evergreen Dance Team
Meeting times: Wednesday, 2-4 P.M. in CRC 316 and Thursday 3:30-5 P.M. in CRC 116

Evergreen Investment Club
Meeting time: Thursday, 2:30 in CAB 315
More info: Andrew Bucher, Adam Smith-Kipnis, 786-9161

The Evergreen Swing Club
We teach East Coast Swing and Lindy Hop basics. We welcome beginners, and you don't need a partner!
Meeting times: Friday, 7 P.M. on the first floor of the library
More info: David, 866-8324; Kristina, 867-4939

Evergreen Queer Alliance
Meeting times: 5 P.M. Tuesday (Gen. interest) in CAB 314; 5 P.M. Wednesday (Film Fest planning)
More info: 867-6544
evergreen_queer_alliance@hotmail.com

Feminist Majority Leadership Alliance
We work towards the goal of having political, economic, and social equality for women.
Meeting times: 1 P.M. every Friday
More info: Whitney Bindreiff 888-2166 or x6636

Giant Robot Appreciation Society
Evergreen's Anime Club!
Screenings Friday, 8 P.M. at the Edge

More info: Ken Koontz
squirefox@hotmail.com

MEChA
The Chicano student movement of Aztlan strives to create a space where members can educate themselves, inform others, and confront issues.
Meeting times: 2 P.M. every Wednesday
More info: x6143

Evergreen Medieval Society
Students interested in recreating medieval martial arts, crafts, and performances.
Meeting times: 5:30 P.M. every Thursday in CAB 320
More info: medievalociety@mail.com 866-6000 or x6036

Mindscreen
Free movies on campus
Group meetings 3:30 P.M. every Wednesday in CAB 320; Free movies every Wednesday at 5:30 P.M. in Lecture hall 1
More info: x6480

Slightly West Literary Magazine
We publish TESC's Literary Mag.
Meeting times: 2 P.M. Monday, 9 P.M. Thursday
More info: Patricia Kinney, Jen Levinson x6480

Umoja
An activities and support group for all students of African decent.
Meeting times: 1-3 P.M. on Feb. 21, March 14, April 4, 18, May 2, 16, 30
More info: Umoja office, x6781;

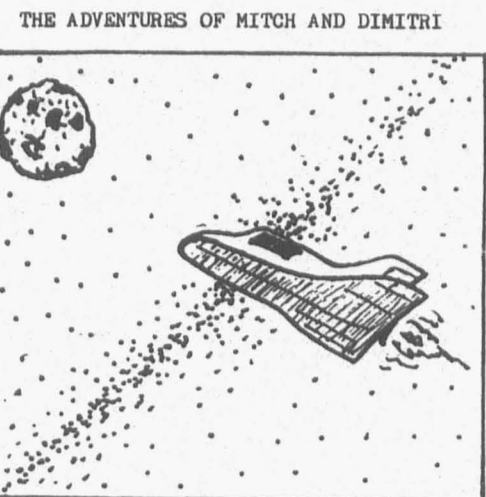
Cossetta Stroud, (360) 455-0470; Loretta Bradley-Allen, (360) 352-9906

WashPIRG
We run environmental, social, and consumer campaigns.
Meeting times: 4 P.M. Wednesday in Lecture Hall rotunda
More info: Rebecca x6058
evergreen_washpirg@hotmail.com

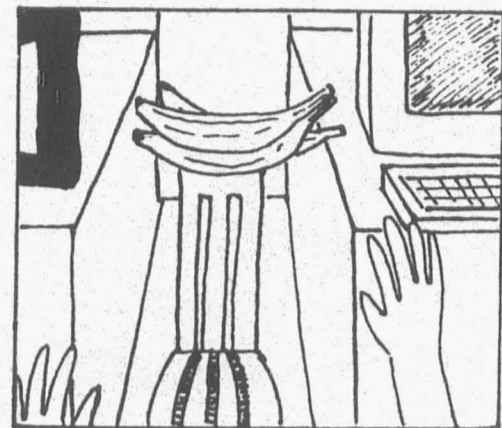
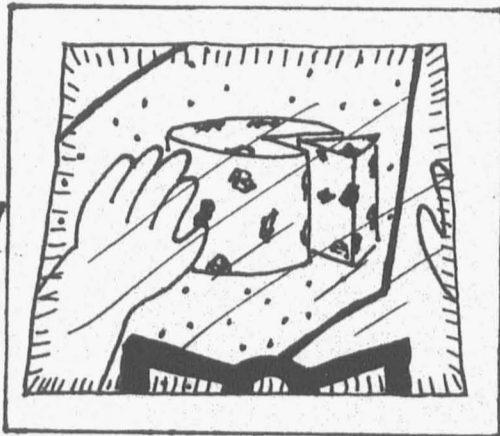
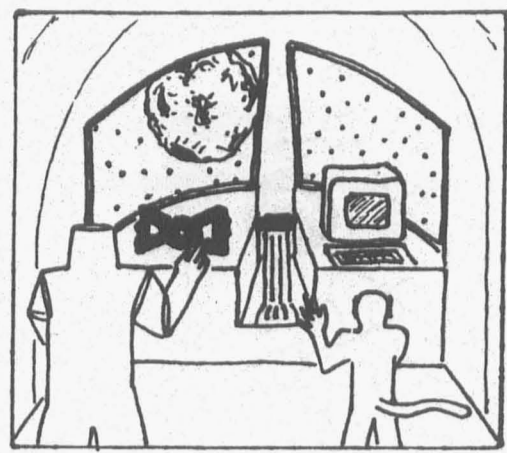
The Wilderness Center
We run trips outside (rafting, rock climbing, hiking, snowshoeing) as well as skill workshops.
More info: Stop by CRC 208 or call x6533. Trip information

Women's Resource Center
A resource center that provides meetings, a library, events and a drop-in center.
Meeting times: General meeting

*This list is not comprehensive. If you want your student group listed, drop off your information at the CPJ (CAB 316)



THE ADVENTURES OF MITCH AND DIMITRI
MONTHS IN SPACE WITH TANG AS THEIR ONLY SUSTINENCE BEGIN TO TAKE THEIR TOLL ON OUR HEROES



Darius
2-07-01

making eyes: objects
She is a cute thing.
Check that out. Look at
that stuff...
making-eyes@hotmail.com

stips

MAKING EYES: POSSESSION

I'd like to have her for
a night. I bet I could
get her if I tried. You're
gonna loose that girl.
making-eyes@hotmail.com

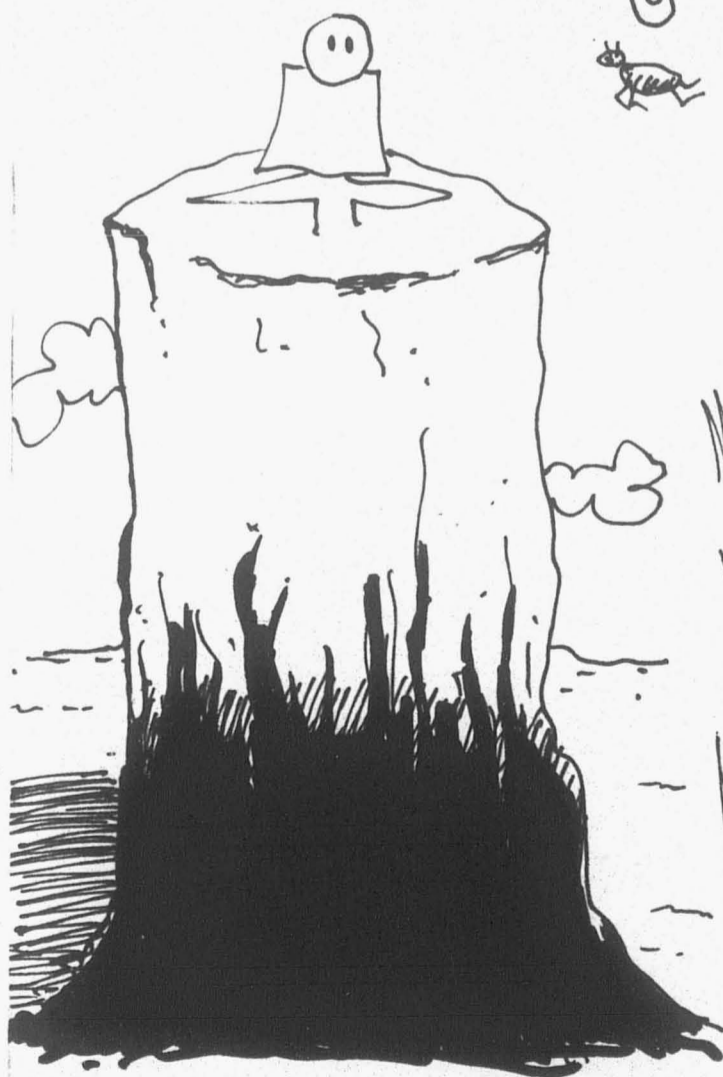
stips

making eyes: my favorite game

I hope I score tonight. I struck out
with her. If you play your cards
right, you'll score. Your best bet
is not to come on too strong.
making-eyes@hotmail.com

stips

PAINTING



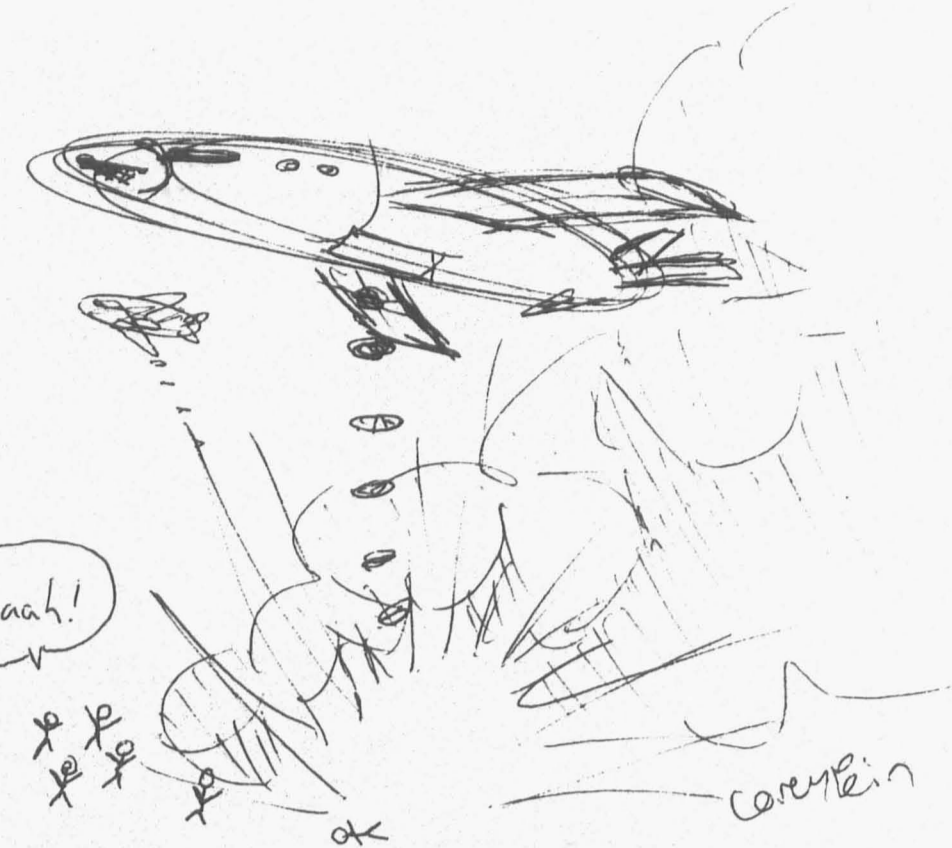
SUCK ON THIS,
MEGATRON!

SHUT UP, OPTIMUS!
YOU'LL GET US BOTH
KILLED!!!

Nathan Smith, 2001



So what if you
don't know
what's going on?
neither do
I!!



Aaah!

careylin

the ship



at first i didnt know
what this was.

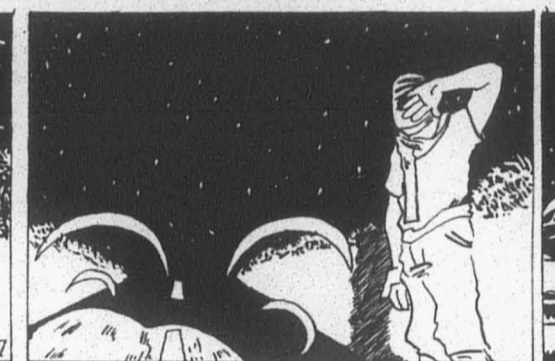


i never seen
anything like
it before.

maybe a snake?
or a dragon?



seems
silly now
what i know.



hey thanks
for the ride.



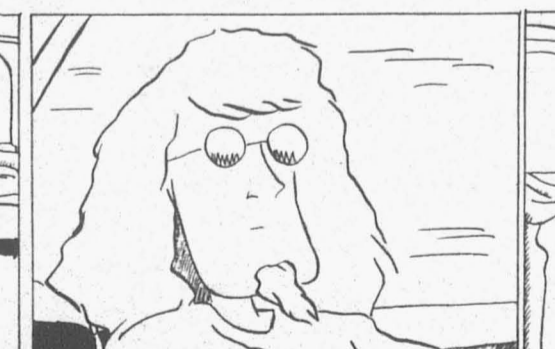
NO PROBLEM.



SO WHERE
YOU HEADED?



i dont know.



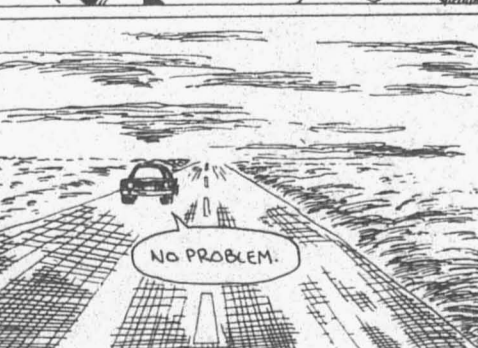
THERE'S A TOWN
UP AHEAD NAMED
HERELMAN. IT'S AS
GOOD A PLACE
AS ANY TO
START.



IT'S GOT A BUS
DEPT SO FROM THERE
YOU CAN GO JUST
ABOUT ANYWHERE.



thanks.



NO PROBLEM.