


Problem:

 You should be able to make money and hold on to it.

Solution: CPJ

CPJ seeks individuals to fill the positions of Ad Designer, Assistant Business Manager, Design Coordinator, Coordinating Editor, Copy Editor and Managing Editor. Call x6213 and come to the office (CAB 316) Talk to Editor-in-chief Brent Seabrook



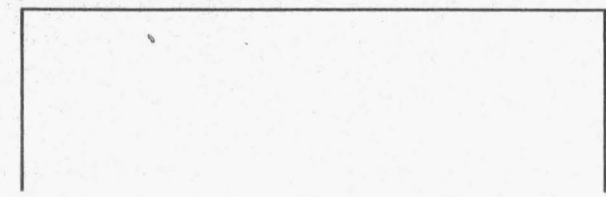
Childcare center renovations
page 5



Whammo! Kung Fu wins big
page 12



TESC
Olympia, WA 98505
Address Service Requested



Bulk-Rate
U.S. Postage Paid
Olympia, WA
98505
Permit No. 65

Be a Lunch Buddy

Are you tired, depressed, or just plain bored all the time? Do the days drag by without any real events or liveliness? Are you just looking for some sort of escape from the everyday grind? (If not, wait until winter. Seriously.) If so, you should become a Lunch Buddy!

McLane Elementary School is hoping to create a "lunch buddy" program. The intent of the program is to have adults eat lunch with students once every week or every other week.

That lunch hour of boisterous energy and insights born of innocence will infuse you with new life. You'll be ready to face the real world with a sunny smile and a happy-go-lucky optimism untainted by cynicism. You'll experience the rewarding feeling of working with children and helping them learn and grow, instead of just seeing it on *Maury Povich*. And don't forget that nutritious, delicious cafeteria food!

The school is asking that any interested Evergreen staff, faculty, or students contact Jeannie Chandler at ext. 6402, or by e-mail at chandler@evergreen.edu. If students or faculty have community service requirements in their classes, contact Elaine Hayashi-Peterson in Academic Advising for further information.

The parent trip

If you didn't already know, the Parents Resource Network is a student group that strives to support the parent-student community at Evergreen.

On October 7th, the Network will have an exciting field trip to the Pacific Science Center in Seattle to kick off the fall in the right way. A 15-passenger van has been rented, so you can travel in style without worrying about driving or parking. Reservations have been made at PSC for the field trip.

The price for the event is \$2 per adult and \$1 per child, which will help cover the costs of gas and parking. Everyone attending needs to pack a sack lunch and any snacks needed for the day. The group will meet at the bus loop in front of the library building at 9:30 a.m. to coordinate transportation, including extra carpooling if necessary.

Space may be limited, even with extra carpooling, so stop by CAB 320 or call 867-6412 to reserve a spot for this fun-filled event. Don't forget to bring your car seats!

by David Smith

For anyone who's been by the CRC lately there is one question: "What's with the big hole?"

The sign on the fence doesn't explain much, and if it's at all possible the web site it refers to is even less illuminating. Believe it or not, they're fixing a leaking roof in the Wellness Center adjacent to and under the excavation site.

The leaks that have damaged walls and ceilings inside the CRC are the result of what Project Manager Hal Van Gilder called "a major drainage issue" and "long standing problem." He also added that all efforts to caulk, seal, and even epoxy the ceiling from inside had failed.

According to the Facilities web page work began on the 10th of July, and was to have been completed by the first of September. As of now Facilities has no completion date for the work.

Van Gilder attributes the delay in completion to the discoveries made when they finally uncovered the problem area. Essentially, he added, the building as completed does not conform to the design specifications.

Mr. Van Gilder hopes to be able to complete the project before the weather becomes a factor.

Fixing a leak



needs you bad.

News 867-6213	Business 867-6054
Editor-in-chief Brent Seabrook	Business Manager Michael Selby
Interim Managing Editor Whitney Kvasager	Interim Asst. Business Manager Jen Blackford
Interim Coordinating Editor Kevan Moore	Advertising Representative Ian Paden (not Poden)
Interim Design Coordinator Paul Hawxhurst	
Interim Copy Editors Sky Cosby Mosang Miles Jonathan Noble Layout Shasta Smith	

CAB 316

cpj@evergreen.edu

The Cooper Point Journal is published 29 Thursdays each academic year, when class is in session: the 1st through the 10th Thursday of Fall Quarter and the 2nd through the 10th Thursday of Winter and Spring Quarters.

The CPJ is distributed free on campus and at various sites in Olympia, Lacey, and Tumwater. Free distribution is limited to one copy per edition per person. Persons in need of more than one copy should contact the CPJ business manager in CAB 316 or at 360-867-6054 to arrange for multiple copies. The business manager may charge 75 cents for each copy after the first.

The CPJ is written, edited, and distributed by students enrolled at The Evergreen State College, who are solely responsible for its production and content.

Contributions from any TESC student are welcome. Copies of submission and publication criteria for non-advertising content are available in CAB 316, or by request at 360-867-6213. The CPJ's editor-in-chief has the final say on the acceptance or rejection of all non-advertising content.

The CPJ sells display and classified advertising space. Information about advertising rates, terms, and conditions are available in CAB 316, or by request at 360-867-6054. The CPJ's business manager has the final say on the acceptance or rejection of all advertising.

A year's worth of CPJs is mailed First Class to subscribers for \$35, or Third Class for \$23. For information on how to subscribe, call 360-867-6054.

POLICE BLOTTER

Jen Blackford

Ah, the first week of school and already I'm enjoying it. There's nothing like watching everyone run around in a high state of panic to register, get into a class, and find edible food at Evergreen to make you think "I'm glad I only have one more year of this." But then that's me and I'm getting out of this madhouse soon.

For the rest of you who have a longer stint, may I say welcome (back for some) and be prepared for the chaos, the utter insanity, the mayhem that is daily life at this school. And, oddly enough, the events that transpire in Police Blotter.

Sept. 2 Back to school time means the usual buying of supplies. You know, like pencils, paper, drug paraphernalia. Oh wait, I'm just thinking of what someone left on Driftwood Road today.

Sept. 3 A deer gets dispatched by a firearm, and I flash back to bad memories of cleaning up the highway for community service. Enough said.

Sept. 4 It's 12:30 a.m. It's quiet...some might say too quiet. An alarm punctuates the silence as the ATM in the HCC blares its warning of turmoil and thievery. Police rush over, determined to catch the crook. However, it turns out the machine was just unplugged.

Sept. 5 Someone violates a no-contact order.

Sept. 6 The weather may be getting cooler, but that didn't stop someone from baring way too much flesh on the Beach Trail.

Sept. 7 Just when I thought I would have a nice alarm-free week, someone accidentally pulls a fire alarm in Lecture Hall 1. How much effort could it really take to not pull a fire alarm? It's not as if you slipped, caught your elbow on the fire alarm, and pulled it down. At least not more than once.

Sept. 8 Going 18 miles over the speed limit lands two people in trouble as one gets cited for driving with a suspended license and the other one for possession of drug paraphernalia. Welcome back to school.

Sept. 10 It was a dark and stormy night when a man got pulled over on the Parkway and cited for DUI and Reckless Endangerment. And a companion traveler was arrested for MIP. Still, elsewhere in the land, in the afternoon, a fire alarm rang out in A Dorm. And therein ends my tale.

Sept. 12 A fire alarm of mystery and wonder occurs today as one goes off for unknown reasons in P-Dorm.

Sept. 14 The Beach Trail is truly a path that leads to great things. Why else would someone choose to sleep near it? Clearly, in order to pursue a quest of some noble sort. Or else because living in Olympia costs so damn much. One of the two.

Sept. 15 Today marks a day of fast living as one person gets cited for narcotics on Red Square while two drivers race at speeds estimated to be up to 90 miles per hour. Ah, the freedom of youth and Fridays.

Sept. 17 We start off with a pipe being seized in the Arts Annex. I'm willing to bet it's not one used for plumbing, but the blotter does not elaborate. Then someone maliciously pulls a fire alarm in A-Dorm. It's refreshing to see a little bit of honesty in the alarms for once. To top it off, history tragically repeats itself as another injured animal is dispatched by a firearm.

Sept. 18 Sure, there's the routine stuff like pets in the Library, graffiti on traffic signs, and people caught with drug paraphernalia, but that's not the interesting part of the day. The Blotter is proud to feature a twisted tale of traffic chaos:

It begins with a call to Police. When the officer answers the call, she talks to a student who claims that she has been involved in an accident. Here's the tricky part. She was apparently sitting on a curb when a car pulled up, wanting to park. She raised her arm to have the driver wait while she got up. The driver, otherwise referred to by the complainant as a "Crazy Bitch," hit her knee when she pulled up. When the officer asked to see her knee, she refused to show her leg and then walked over to her car.

But there's another side to this story, as with

the driver stated that she asked the complainant to move when she pulled up to park. When she saw the driver raise her arm, she thought that meant it was okay to proceed. She pulled up slowly and when she stopped, the complainant stated "I guess patience is not one of your virtues" and started taking down her license plate number. She then informed the driver that she was calling 911, all while being referred to as "The Crazy Bitch."

The officer took down all this information, with the notation that it was unlikely the complainant would have been hit by the car unless she was sitting on the blacktop. Also, the driver was a foot away from the curb. The End.

Sept. 19 Graffiti is found on the Seminar Building handicap entrance and a motorcyclist avoids the long arm of the law in a drawn-out chase that strangely enough, is not interesting enough to be broadcast live on the evening news.

Sept. 20 Nothing but two delayed fire alarm entries, one set off in N-Dorm, and the other caused by a contractor error in something mysteriously termed as "Pres Res." Hmm...

Sept. 21 At 7:36 p.m., a floor scrubber is stolen. At 10:20 p.m., it is recovered. Where did it go in that short span of time? I am not sure. How was it taken? I cannot tell. What was it doing for about five hours? My mind shudders at the possibilities.

Student Governance Opportunities

A number of Disappearing Task Forces (DTFs) and committees are seeking student members. Student input is critical to the functioning of the college. Serving on a committee or DTF provides students with opportunities to influence college policy and learn more about the college. For information about the groups listed below contact the Office of the Vice President for Student Affairs, extension 6296 or Library 3236.

S&A Fee Review Board: The S&A board has several paid positions for people to allocate the S&A funds around campus. Nine students sit on the board. The students are paid a stipend of \$150.00 fall quarter, \$150.00 winter quarter, and \$200.00 spring quarter. The group meets twice a week for the academic year. Applications are due Oct 13. Contact Jaime Rossman at ext. 6221.

Student Conduct Code Hearing Board: This group conducts hearings when students appeal decisions of the Campus Grievance Officer. Several students needed. Contact John Carmichael ext. 6296.

Tuition Waiver DTF: This group is meeting to propose a policy for allocating that part of the college's financial aid that is awarded as tuition waivers. Contact Bill Zaugg, ext. 6291.

Graduation Planning Committee: This group will help to plan commencement activities for June 2000. Students who are seniors are encouraged to become involved. Contact Jesse Welch, ext. 6310.

Faculty Hiring DTF & Committees: Two committees are involved in each regular faculty hire: a screening committee which reads files, recommends people for interview, and hosts the interviews, and the Faculty Hiring DTF, which interviews all candidates for all positions. There is a different screening committee

for each hire, but one hiring DTF for all of the positions. The screening committee and Hiring DTF merge to make the final hiring recommendation for each position. The DTF and the other committees are anxious to have student members. Screening committees work fairly intensely for 2-4 weeks reading files, and another 2 weeks during interviews; the Hiring DTF meets almost all Mondays and Wednesdays of Winter Quarter during governance time, with some Fall and Spring meetings. Interested students should contact the Faculty Hiring Office as soon as possible at ext. 6861.

Enrollment Coordinating Committee: This group helps review and develop approaches for the recruitment and retention of students. This committee meets twice a month on Friday mornings, one student is needed. Contact Michele Elhardt, ext. 6310.

Drug & Alcohol Abuse Prevention Advisory Board: This board helps develop policy and reviews abuse prevention efforts. At least one student is needed. Contact Liz Nyman, ext. 6200.

Campus Land Use Committee: This committee is charged with making sure the college follows the Campus Master Plan. The committee reviews and makes recommendations on plans such as building new facilities, modernization, outdoor art installations, academic projects in undeveloped areas, ecological restoration, parkway repairs, landscaping,

chemical use, and changes in land use policies. Contact Michel George, x 6115.

Deadly Force Review Board: reviews every incident in which a firearm or other deadly weapon is drawn, discharged, or unprofessionally exhibited by an Officer or by any other individual on campus. Contact John Carmichael, ext. 6296.

Peer Health Advisory Team: This group is starting this fall. Students are needed to participate in activities and workshops. Contact the coordinator at ext. 6220.

Human Resources DTF: This group will review all aspects of college personnel-related issues, including compensation practices, evaluation processes, the search process, employee recognition, employee benefits, upward mobility programming and professional development and training. Contact Meredith Huff, ext. 6367.

Food Services DTF: This group will work on awarding a food services contract in the spring of 2001 and is looking for a lot of student involvement. Contact Piper Kapin, ext. 6501.

Space Management Committee: This group sets policy and approves space use on campus. This group meets at least quarterly. At least one student is needed. Contact Michel George, ext. 6115.

Seminar Phase II Design: A major new classroom and office building is expected to open in Fall 2003. The design phase of the project is currently underway.

Student input in the design phase is needed. Contact Michel George, ext. 6115.

Infraction Review Committee: These are paid positions on a board that hears appeals of parking tickets. This committee, which consists of two students, one faculty, one classified staff, and one exempt staff, meets at least once a month for at least two hours. Contact Susie Seip, ext. 6131.

Copyright & Patent Board: is responsible for administering the college's Patents & Copyrights policy. In practice this means meeting occasionally (once or twice a year) to review questions related to ownership of copyrights and patents. Contact Bill Bruner at ext. 6246.

Communications Board: This group provides guidance on student media issues. The board meets once each quarter and needs two students. Contact Phyllis Lane, ext. 6034.

Bookstore Advisory Committee: This committee advises the bookstore in selecting merchandise and on bookstore policies. This group meets once a quarter. Two or three students are needed. Contact Patrick Miller, ext. 6217.

Health and Safety Advisory Committee: This group helps to promote worker health and safety on campus. This committee meets monthly for two hours and needs at least one student. Contact Robyn Herring, ext. 6111

MAILBOXES ETC.

1001 COOPER PT RD SW #140 (ACROSS FROM TOYS R US)
705-2636
HOURS: MON. - FRI. 9AM - 6PM, SAT. 10AM - 4PM

OCTOBER IS CUSTOMER APPRECIATION MONTH

THANK YOU SPECIALS

59¢ Color Copies on New Digital Copiers

2¢ COPIES

Limit 500 per person, per day
One Side 8.5 x 11" Self Service
Black on 20lb white bond

Beyond the Bubble

By Brian Frank

Produced as a service from EPIC(Evergreen Political Information Center)
Epic meets at 2pm Wednesdays at Library 3500
Suggestions? You can contact me at epicupdate@hotmail.com

Domestic

- A new book by journalist Patrick Tierney, titled "Darkness in El Dorado," details a study conducted by James Neel and several other world famous anthropologists during the 1960's in which the scientists deliberately administered measles to the Yanomani people of Venezuela with the expressed intention of sparking an epidemic. The study killed thousands, was administered without any medical or governmental oversight, and the unwitting test subjects were denied medical attention. There is speculation among the anthropological community that the study's purpose was testing the eugenics theories developed by Nazi scientists before and during WWII. The U.S. Atomic Energy Commission funded the study; as they wished to study the effects of large-scale disasters on small communities. The study's surviving authors have been asked to defend their work at the next meeting of the American Anthropological Association in November. (more at /www.guardianunlimited.co.uk/)
- A New York Times study released last week found that 10 of the 12 States that have abolished the death penalty have consistently had murder rates lower than the national average. In related news, a recent NAACP study found that 43% of executions in the U.S. are of African Americans. (more at /www.nytimes.com/)
- Polling conducted last week found Al Gore with a substantial lead over George Bush Jr. in the presidential race. Gore was also found to be leading in the majority of the "battleground" states. (more at /dailynews.yahoo.com/)
- A Ralph Nader "super-rally" in Seattle last week drew more than 10,000 supporters. With similar sized rallies in Oregon and Minnesota the last month; Nader has had the three largest rallies of the presidential race. Nader is polling at about 3-5% nationally. (more at /www.washingtonpost.com/)
- Human rights activists and environmentalists around the country protested Gore's connections to Occidental Petroleum last week, with the largest protests occurring in Washington State, Oregon, Iowa, California, and Wisconsin. Occidental Petroleum is planning on beginning drilling on the ancestral land of the U'wa of the Colombian cloud forests in the coming weeks.

(Gore is the executor of a family account in Occidental worth more than \$500,000, and Gore's father sat on the company's board of directors. The U'wa have vowed to commit mass ritual suicide if Occidental drills on their land. (more at /www.washingtontimes.com/ and /www.ran.org/)

Environmental

- Investigations by the U.S. Department of Justice last week found that a laboratory had falsified test results at thousands of Superfund sites across the United States; in what is apparently the largest case of laboratory fraud in U.S. history. Superfund sites, administered by the EPA, monitor water quality at industrial sites. (more at /ens.lycos.com/)
- U.N. meteorologists along with NASA and the World Meteorological Organization announced last week that the Ozone layer above Antarctica is growing at an unprecedented rate. (more at /dailynews.yahoo.com/)
- Damage from the worst flooding in decades has claimed hundreds of lives throughout South East Asia, and put millions at risk of starvation and disease. The monsoon rains and typhoons are expected to continue for several more months. Scientists have noted a marked increase in extreme weather events in the past five years attributable to global warming (more at /ens.lycos.com/)
- Congressional committees have approved a major new "salvage" logging rider, nicknamed "Happy Forests", for attachment to the 2001 Department of the Interior appropriations bill. Salvage logging allows areas that are normally protected from timber harvest to be logged, ostensibly to reduce accumulation of dead logs that might trigger forest fires. The controversial rider allows harvesting plans to move through the requirements set by the National Environmental Policy Act (NEPA) and the federal Endangered Species Act (ESA) by special "expedited procedures." A similar rider in 1995 sparked many of the tree sits that have occurred around the country in the past 5 years. (more at /ens.lycos.com/)
- The Canadian government initiated a new plan to begin secretly flying imported excess plutonium to secret sites around Canada; thwarting efforts by environmental groups to expose the locations of the processing sites for the extraordinarily dangerous element. (more at /ens.lycos.com/)
- Kraft recalled its Taco Bell Taco Shells last week after it was found that they contained a strain of genetically engineered (GE) corn developed by the Aventis Corporation. The corn was not approved for human consumption due to allergic reactions found in test subjects, although it is used in animal feed. (more at /dailynews.yahoo.com/)

- Bill Clinton authorized the release of 30 million of the country's 571 million barrels of emergency oil reserve last week in an attempt to lower oil prices in the U.S. for the coming winter. Oil has become a major election issue with Gore accusing Bush of colluding with oil companies, Bush attacking the Clinton/Gore administration for not forcing OPEC (the Organization of Petroleum Exporting Countries) to produce more oil. (more at /abcnews.go.com/)

- Japanese whaling ships returned with 88 whales, including endangered sperm whales and 43 endangered Bryde's whales. Numerous governments and environmental groups have spoken out against Japan's actions. The U.S. is threatening sanctions. The Japanese government claims eating whales is part of the country's traditional culture, although the whales are generally eaten only at upscale restaurants (more at /www.ap.org/)
- Last week a jury acquitted 28 U.K. activists, including the director of Greenpeace, of charges stemming from their destruction of a genetically modified maize test crop in eastern England. (more at /ens.lycos.com/)

U.S. Foreign Relations

- France and Jordan joined Russia last week in violating U.S. and U.K. led sanctions by delivering emergency medical supplies to Iraq last week. The sanctions have been widely criticized by human rights activists and a growing number of diplomats worldwide as they have led to widespread starvation and severe health problems in the country. (more at /asia.dailynews.yahoo.com/)
- Reports released last week brought fresh evidence that the CIA funded known human rights violators in Chile after the 1973 coup that toppled socialist President Salvador Allende and brought General Augusto Pinochet to power. Money was given to the head of Pinochet's directorate of National Intelligence, Manuel Contreras, who was later convicted of masterminding the 1976 car bombing that killed Orlando Letelier, a member of Allende's cabinet and American Ronni Moffitt. The CIA insists that the funding was due to a "miscommunication" (more at /www.washingtonpost.com/)

International

- A new report from the United Nations Population Fund on the challenges facing women around the world was released last week. Findings from the survey include: More than 1 in 3 women have been raped; at least 130 million women have been forced to undergo genital mutilations; 2 million girls between the ages of 5 and 15 enter the commercial sex market each year; in the U.S., a woman is battered every 15 seconds. (more at /dailynews.yahoo.com/)
- Colombia's largest pro-government paramilitary organization, the United Self-

Defense Forces of Colombia (AUC) slaughtered dozens of suspected leftwing "guerrilla collaborators" last week. The killings were the latest in Colombia's decades old civil war, which has claimed more than 35,000 lives since 1990. Human rights activists have found substantial documentation linking the AUC to the Colombian government, and the AUC has publicly stated that it receives 70% of its funding from drug trafficking. The Colombian government is the 3rd largest recipient of U.S. military aid which is administered without human rights stipulations due to a special presidential waiver. (more at /dailynews.yahoo.com/ and /www.hrw.org/)

- Survival International, an indigenous people's rights group, released a report last week on the destructive effects of oil industry on Siberia's indigenous peoples. The report details the use of fear tactics, legal manipulation, and breaking of compensation agreements by oil companies trying to obtain land rights in the region. The study also finds a dramatic increase in suicide and alcoholism among the effected Siberians. Problems stemming from global oil shortages have been severe in the past few months as oil exploration expands to more remote locations. Massive gas price protests have occurred in nearly every European country and reports of oil related violence, displacement of indigenous peoples, and severe environmental damage have come from Canada, Kazakhstan, Ecuador, Nigeria, Benin, Togo, Ghana, Russia, Colombia, China, Tibet, Brazil, Bolivia, Chad, Cameroon, Papua New Guinea, Australia, Peru, Burma, and other countries. (more at /www.moles.org/ and /www.survival.org.uk/)

- Vojislav Kostunica defeated Slobodan Milosevic last week in the Yugoslavian presidential elections, although Yugoslavia's federal election commission has declared that he did not need the 50% of the vote needed to avoid a run-off. Kostunica has declared the results fraudulent. The U.S. has donated millions to organizations working to oust Milosevic, although Kostunica himself has been vocally anti-NATO. (more at /dailynews.yahoo.com/)

- Approximately 10,000 demonstrators converged on the joint meetings of the International Monetary Fund (IMF) and the World Bank last week. Significant clashes with the police occurred at the protests with police using tear gas, clubs and water cannons to disperse protesters; and the protesters fighting back with molotov cocktails, bricks, and wooden clubs. These international institutions stand accused of aiding rich countries in the exploitation of the poorer countries of the world. (more at /www.indymedia.org/ and //www.guardianunlimited.co.uk/)

Remember the Children

The Childcare Center should be included in Evergreen's renovations

analysis by Stephanie Johnston

This fall marks the anniversary of my return to college after having a baby. I successfully completed one full academic year, juggling part time work, full time school and, most importantly, the biggest challenge: raising my beautiful, bright 2 1/2-year-old son.

However empowering this experience may seem, it was a struggle. Finding affordable, dependable, quality childcare was one of the most difficult obstacles I faced. In the beginning, my closest friends cared for my child while I worked and went to school. However, as schedules and life paths evolved, I no longer had the privilege of having those I trusted most care for my child.

After NINE different nannies and care providers in only two quarters of school, a spot in the Duckling room at the Evergreen Campus Childcare Center became available after spending ONE YEAR on the waitlist. I was lucky to be this fortunate; some students are still on the waitlist for campus childcare after TWO years of patience and frustration.

Meanwhile, more and more infants and toddlers are finding their way into Evergreen's classrooms. I, too, have had to bring my son to class when I couldn't find anyone to watch him during evening classes. I retained hardly anything from these classes, and I usually left early because tired two-year-olds and lectures don't mix. I completely support any parent pursuing a higher education. The reality, however, is that in most cases the presence of young children in the classroom lowers the quality of education that faculty can provide and that students come here to receive.

Evergreen is growing rapidly. Space on this campus is a precious commodity. The administration plans to build a new seminar building to accommodate the needs of students and faculty. This project is coupled with the inevitable parking lot expansion, which will keep TESC up to code with zoning laws.

As our college continues to undergo the necessary changes to meet the needs of the

student body another large scale plan to expand the Evergreen Campus Childcare Center is also under way. The numbers of students attending Evergreen who are in need of childcare are soaring and the center's director, Sandi Shellabarger, is searching for the funding to finance the renovation and expansion of the childcare center on campus.

The proposed expansion and renovation of the center would almost double its current capacity of 37 (10 of these slots can be filled by kids of faculty and staff) up to 70, significantly increasing availability for infants and toddlers. The blueprints for the new center also includes a Parent's Resource room, a place where parents can network, do homework, or access child development and parenting books, magazines, and information.

Staffing the new center will also provide more great opportunities for individuals who are interested in child development by creating a career ladder in which individuals can begin as aides and work their way up to the next level. This expansion will provide relief for those families who have been waiting for affordable, convenient, quality childcare.

For now, these visions of grandeur are on hold. Financial support is the missing component to beginning this renovation, and with other very large expansion projects on the table the Childcare center on campus is taking a back seat to the seminar building and the parking lots needed to accompany that growth. Yet I commend the compassion and support of the student body at TESC, as the Services & Activities Board has already allocated \$269,000 of the \$1.2 million needed to complete this new center.

These last two years, the expansion of the childcare center on campus has been the top priority of the S & A Board, which is comprised of and governed by students. This year alone, the S & A Board awarded \$171,000 for operating expenses, which will allow low-income students to pay a lower monthly childcare fee of \$200. Eighty percent of the students who have children enrolled in the

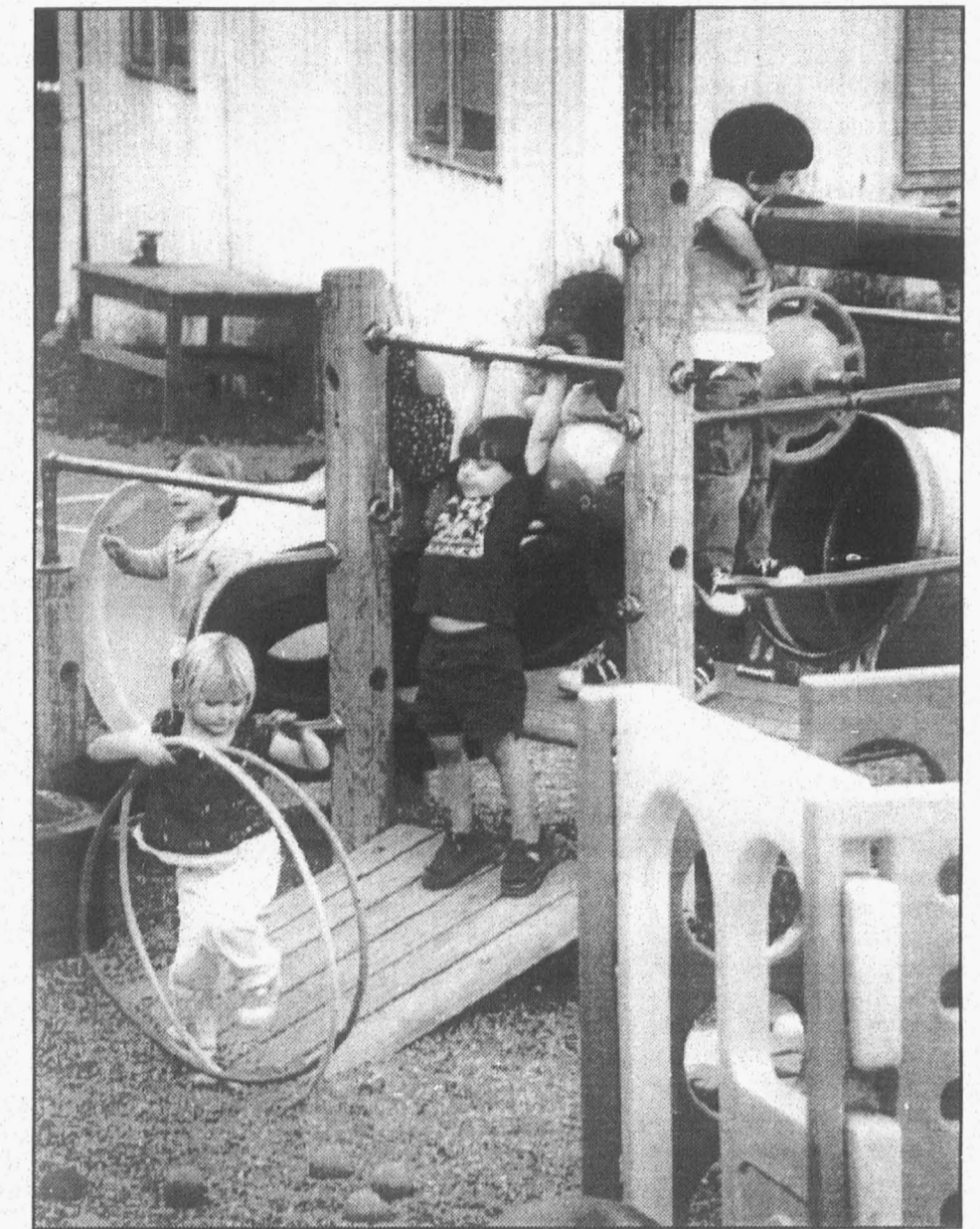


photo by Paul Hawxhurst

childcare center qualify as low-income families.

I am truly amazed that the students on this campus are so compassionate and supportive of the needs of such a smaller student population: low-income parents attending Evergreen. I want to thank S & A for all its efforts to see this project succeed.

One hundred percent of the funding secured for the new center has essentially come from the students. Yet this is not

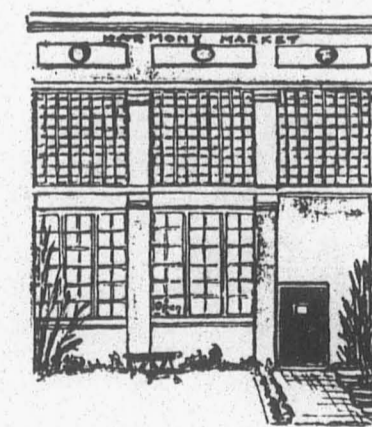
stopping Shellabarger. She has now added grant writing to her list of job activities, as she has already applied for grants with the Department of Education and the Department of Community Trade and Economic Development, and she is preparing to send off an application to the Paul Allen Foundation.

I commend her dedication and commitment to parents on this campus, for Sandi knows these parents can't keep waiting.

Harmony Antiques & Karinn's Vintage Clothing

Welcome Back!

Great Gift Ideas
*candles*soap*teacups*crystal*



HARMONY ANTIQUES
113 Thurston Ave. NE
Downtown Olympia
OPEN DAILY
(360) 956-7072

Complimentary Batdorf and Bronson coffee served daily.

Your friendly neighborhood antiques, collectibles, & giftware store

Jin Jor

Natural Fibers Since 1988
Clothing styles - casual to career

Greensers show ID for 25% off
Sept. 28 through Halloween

• New Location •
613 Capitol Way South
Downtown Oly across from
Sylvester Park

Hours: Mon-Sat. 10-6
& Sun. 12-4
www.JinJor.com

Orca Books
Olympia's Largest Independent Bookstore

Student Discount
10% Off New Texts

We buy books everyday!
509 E. 4th Ave. • 352-0123
Mon-Th 10-8, Fri & Sat 10-9, Sunday 11-5

Chrysalis

210 1/2 West 4th Ave.
Downtown Olympia
(360) 753-5527

NEW!!
BONG WATER SODA!
CANNABIS CANDY
COMPANY SWEETS!

TUES. THURS. 10 A.M. - 8 P.M.
FRI. & SAT. 10 A.M. - 10 P.M. • SUN. NOON - 5 P.M.

Olympia Community Yoga Center
at 1009 E. 4th Ave.
presents a very spacious,
New Yoga Studio

Yoga classes
workshops Yoga supplies
meditation books and videos
massage work/study
T'ai-Chi acupuncture

Call to register for Winter Classes!
(360) 753-0772 www.olyyoga.com

KEY Student Services
School can be confusing. We can help.

KEY can provide: tutoring, academic & career planning, financial aid guidance, mentoring, referral and advocacy

You can become a KEY student if you are: a first generation college student, considered low income based on fed. guidelines, or have a recently documented physical or learning disability.

Come see us in the Student Advising Center, Library 1407 866-6000 x6464

**Back-To-School
SPECIAL
for Off-Campus
Students!**



**We know the importance of
speed and variety on a budget.**

Feast on this. Download speeds that will make your head spin. And more movies, sports and special interest channels than ever before. All at a price you can afford. It's AT&T@Home® high-speed cable Internet service and AT&T Digital Cable. So call us today, and feed your need for something different.

**Order AT&T@Home
and get
FREE INSTALLATION
and
FREE SERVICE
Until 2001!**

**Sign up for any
Digital Package
and receive
FREE INSTALLATION
Plus 2 FREE MONTHS*
of Digital Service!**

*2 free months includes a 3rd and 6th month credit of \$16.70 for digital service and equipment.



@Home.

**1-888-780-HOME
www.home.att.com**



DIGITAL CABLE

**357-3364
www.cable.att.com**

Offer expires 10/15/00. Certain services are available separately or as part of other levels of service, and not all services available in all areas. You must subscribe to Basic Service to receive other services or levels of service. You may be required to rent a converter and remote control for a separate charge to receive certain services. Installation, equipment, additional cable or data outlet, change of service, programming access and other charges may apply. Franchise fees, taxes and other fees may apply, with the actual amount depending on location and services ordered. The regular monthly rate of \$16.70 for Digital service and equipment will be applied and credited on your 3rd and 6th month bill statements. The regular monthly rate for your Digital package will appear on all other billing statements. Installation offer available only for standard installation for one outlet. Offer of "free service" limited to standard monthly service charges through December 31, 2000. After December 31, 2000, a regular AT&T@Home monthly rate applies. Installation offer good only for a standard installation of one computer to one data outlet. AT&T@Home offer available only in participating systems for new customers only. Not valid with any other offer. Actual speeds vary. Upstream data transfer speed is limited to 128 kbps. For questions about minimum requirements and complete details about service and prices, call 1-888-780-4663. Call AT&T Broadband for details about Digital Cable services and prices. Access to your phone line is required to receive Digital Cable. AT&T@Home and AT&T Digital Cable are not available in all areas. Pricing, programming, channel position, and content may change. Certain restrictions apply. ©2000 AT&T. All Rights Reserved. @Home and the @ball logo are registered trademarks of, and are used under license granted by, AT Home Corporation.

Homeless? Hungry?

Every year a few students experience temporary emergencies that can produce hunger and homelessness. Estrangement from parents or some other change in circumstances can leave students without the necessary resources for food or lodging.

This can be a difficult situation not only for the student in need but also those who want to help, but can't. In an effort to provide as much assistance as possible to students experiencing a housing crisis, the college designates a contact person to provide advice and support.

Deborah Rohovit will continue in that role for the 2000-2001 year. She's able to provide students with resources and referrals. There is also a small sum of money available for emergency loans to students in a housing crisis. In some cases these funds can be used for low-cost, emergency on-campus housing, on a space available basis.

You can find Deborah in Library 1401, or call her at 867-6657. She's usually available Monday through Thursday, until 7 pm. Also, the Food Bank is located in the Student Health Center waiting room, on the main floor of the Seminar Building, should you or anyone you know be of need.



as seen on
WB 22

**It's amazing what
this little thing can do.**

Protect yourself from getting pregnant with the birth control pill or another contraceptive.

During September and October, new patients receive first month's supply of birth control pills free!

Call for an appointment today.

Planned Parenthood®
of Western Washington
1-800-230-PLAN
www.ppw.org



Welcome Evergreen Students!

Come on by and check us out

- Music: new & used - CDs, cassettes, LPs
- Videos to rent - foreign & art films
- Skateboards, incense, Converse shoes

**Special Orders Welcome
357-4755**

**In The WESTSIDE CENTER
At DIVISION & HARRISON
MON - SAT 10 a.m. - 8 p.m.
SUN 12 - 5 p.m.**

Darby's Café & Espresso ph. 357-6229

Welcomes back our Evergreen Students and Alumni... We look forward to serving you this coming school year as we have over the past four years. Come in and check out some of the new foods that we have added to our menu; we believe we have balanced our menu to include some interesting vegan and vegetarian dishes that have been a hit with our customers. Again, welcome back to Olympia and we look forward to sharing our past friendships and making new ones with the new students enrolling this year... Mark, Keith & the staff at Darby's

**Open on Wed. - Fri., 8:pm - 3:pm, breakfast & lunch
Open on Sat. & Sun., 7:am - 2:pm, breakfast only
Located at the corner of 4th & Plum Streets**



Opinion

Watch your language

By David Smith

It's been said that there are over 200,000 words in the English language. The average American has a vocabulary of around 1,000 words and uses around 100 on a regular basis.

Which words we choose say a great deal about who we are: what one person thinks or perceives of the world around him is just as viable, just as remarkable as the next. It is how those observations are expressed - the language, the grammar, the style - which determines how the messenger receives the message. One of my professors likes to quote Cicero: "If truth were self evident, eloquence would not be necessary."

I grew up in a small town in New Hampshire; it's a region famous for the local accent. New Englanders are forever lopping off R's from one place in their speech and appending them elsewhere, seemingly at random. It was a manner of speech I was able to mimic but never really adopted. I could almost blend in, but never totally. How you spoke determined how you fit in, or if you fit in.

"The average American has a vocabulary of around 1,000 words and uses around 100 of them regularly."

When I was about twelve, I was sent to private school, and I found that how I wrote and spoke put me in the majority. For a change, the few who sounded like old fishermen stood out. The language barrier was reversed. But when I went home, I found that the first time I dropped a word with more than two syllables, I would get puzzled, surprised looks, and my old friends called me 'professor.' Thomas Wolfe told us, "You can't go home again," to which I reply, "Well, duh!"

I once left a job I liked, but it wasn't because of the people. It was because of their language. I actually liked the people and the work, but the guys (and they were all guys) couldn't seem to express anything without injecting something pointlessly vulgar. At first, I didn't think anything of it; I've always had to look past how someone spoke to hear what they were saying, just like back home. It was when I started copying them that it became a problem. I didn't want to do it; I

didn't try to do it. In fact, I discovered that these vulgarities, words that belong on the battlefield, marked me as ignorant.

Actually, as I think back on it, I quit the whole state of Texas because of language. Not that twangy, singsong, achy-breaky bull you hear on "Country" stations. The language I'm thinking of was more subtle and insidious. Texans have a self-image, a stultifying groupthink, an 'our way or the highway' attitude. There was no one clear example you could point to; it was an inference, almost a cultural imperative that said, 'you're either a snob, a redneck hick or you don't belong.' I didn't belong. I found I could mimic the accent passably well, but the attitude was another matter. Language is a most powerful force in our lives.

A week or so ago, on the bus leaving campus, I struck up a conversation with someone on a political issue when two teenagers got on and sat across from us. The one on the right got very interested and almost excited about the issue we were discussing and wanted to say something. I don't remember what it was. All I remember is that he was awkward and frustrated; twice, he got embarrassed and apologized for swearing. Twice since then, I've noticed bus drivers warning people I knew were Evergreen students about their language.

Very recently I offended someone, someone I respect, someone whose opinion matters to me. It was some stupid little thing I don't even remember doing. That makes it worse. It means that somehow I became insensitive to how I express myself, and that is a very important thing. When someone pointed it out to me, I was horrified and embarrassed, but it made me think. I've been thinking about language ever since.

I can't undo what's been done, and I can't unsay what's been said; but I thought if I could get one other person to think about how they are perceived, how they express themselves, then some good will have come out of my carelessness.

A WARNING TO ALL THOSE WHO READ THIS: In the following months you will be subjected to the use and eventual abuse of rhetorical, symbols, thoughts, language, and of reality itself- Certain words should and will become meaningless- peace, freedom, justice, equality, life, democracy, law, community, left/right/wrong/bong, and nader.

All of these words are pieces you ve used to build your illusion- REALITY IS ADDICTIVE Language & Words & Thoughts & Ideas & Beliefs have built a world around you while you were too busy paying attention- If you are reading this there is something wrong with you-

Thought is self-defeat No one agrees with you about anything- Heaven is down. Hell is up. This is proven by the fact that the planets and stars are orderly in their movements, while down on earth we come close to the primal chaos

*note (Imposition of Order = Escalation of Chaos)

WHATEVER YOU BELIEVE IMPRISONS YOU There is no way out of suffering. You try to resist. The Light shines brighter and the sirens return. Curfew is now active. Return to unit.

burn the world they taught you burn the world they made they d kill you if they caught you they ll kill you anyway

Food Service Debate

Presented by EPIC

Why we protested Sodexho-Marriott

The Branch speaks out

By Brian Frank

Last year, students at dozens of colleges around the country initiated campaigns against Sodexho Marriott - at two of these colleges, the State University of New York at Albany and our own Evergreen State College, the protests ended with Sodexho Marriott losing a food service contract. The protests stem from two main issues: Sodexho Marriott's ties to the emerging "for-profit" private prison industry and the company's long history of mistreatment of its workers.

Bear with me as we delve into the shady underworld of the corporate inter-ownership and mega-mergers. Sodexho Marriott was created in 1998 when the Marriott Hotel chain merged its food service holdings with the food service holdings of the Sodexho Alliance, a Fortune 500 transnational corporation based out of Paris. The Sodexho Alliance asserts substantial control over Sodexho Marriott with 48% stock ownership and the right to appoint several board members to the company.

In the Sodexho Alliance's broad portfolio is one of the largest chunks of the recently merged Corrections Corporation of America/Prison Realty Trust (CCA/PZN), the largest owner and manager of private prisons in the world. The Sodexho Alliance's Vice President sits on CCA/PZN's Board of Directors. Until last spring, when Sodexho Marriott realized the protests against them were growing, the president, founder, and CEO of both the CCA and the PZN was on Sodexho Marriott's board of directors. Clearly these companies, besides being financially linked, are quite chummy. I would imagine that many of you reading this

are more or less opposed to the incarceration of human beings for profit on premise. If not, I can assure you that the CCA/PZN has a long, long history of problems including guards having sex with inmates, allegations of severe brutality, racism, rioting, escapes, killings of inmates, lies to government officials and reporters, and illegal firings of whistleblowers. The CCA has been the subjective of numerous investigative articles, and even a 60 Minutes special.

Besides the fact that cents off of every dollar spent at Sodexho Marriott end up reinvested in the private prison industry, a sandwich bought at Sodexho Marriott cafeteria supports one of the most anti-labor corporations in the U.S. Before the merger, Marriott's was described by the AFL-CIO as "not only violently anti-union...but ideologically so" and things really haven't gotten better since. Sodexho Marriott was accused of union busting by the American Federation of State, County, and Municipal Employees in 1998. Earlier this year the National Labor Relations Board ruled that Sodexho-Marriott had illegally suppressed worker's first amendment rights by a statement in their employees' manual prohibiting discussion of working conditions - even when off the job. Indeed, Sodexho Marriott was kicked out of Albany's campus largely due to union busting efforts at that college's cafeteria. Not exactly the kind of place you'd want to go looking for an on campus job.

The good news is Sodexho Marriott's isn't on our campus today. The bad news is they may very well re-bid on the food service contract for next year, or may even buy out Fine Host before the year's end! In the meantime, there are still very serious complaints from the current food service that can no longer be ignored by the community at large. I suggest keeping a watchful eye on the food service developments this year - if not, you may end up eating from a corporation you'd rather not touch with a fork next time around.

by Hannah Fisher

In the 2000-2001 catalog, Evergreen has a copy of its Social Contract, "a document that has defined and guided the college's values since its very beginning". It goes on to say that "Evergreen can thrive only if members respect the rights of others while enjoying their own...All must share alike in prizing academic and interpersonal honesty, in responsibly obtaining and in providing full and accurate information..." Well, I would like to believe that these are values that Evergreen does uphold, but events that transpired earlier this summer have led me to believe otherwise. I refer, of course, to the entire Sodexho-Marriott fiasco that was almost pulled off on the Evergreen campus.

The Branch first heard the rumor of our inclusion in the new food service contract through the Evergreen grapevine. We then asked our closest supervisor, the manager of the Bookstore, and he assured us that the chance of our being taken over were very slim - "10-15%". In our eyes, this was the right idea, as the Branch has been and is a non-profit, student-run business that has maintained some of the values that Evergreen should be about. I refer to the fact of its being a collective learning experience, where every major decision is made by the entire staff. This makes it a laid-back place, but hey, we sell junk food and smokes.

Our next move was to attend an open forum that was held in late June. At this meeting we asked the members of the committee to tell us what was going on, and were reassured by Ruta Fanning and Chuck McKinney that it was highly unlikely. Exactly

a month after this meeting, we found out that we had been part of the negotiations all along, and had been sold out to Marriott by the aforementioned members of the committee. This was all done without our knowledge, behind closed doors. What really infuriates me is the fact that we were lied to, in direct violation of the social contract Evergreen seems so proud of. I believe that this episode is indicative of what happens at Evergreen. There is a great deal of apathy among the students on this campus, and that is taken advantage of by those who make the decisions. We were granted a reprieve when Sodexho-Marriott suddenly backed out of the deal, and the only reasons that I have heard were "financial". I don't pretend to know what that means. I only know that it seemed entirely too good to be true, and I still think there's something fishy about the entire deal.

I write this to inform the student body that the Branch was grateful for the overwhelming amount of support that we were flooded with during the entire ordeal. However, just because Marriott is not a presence on campus at this time does not mean they are no longer a threat. I encourage all of you to take part in the decision about the new food service contract. There is great danger in assuming that bad things don't happen in the Evergreen bubble, because probably sooner rather than later it'll bite you in the ass. We as students must be conscientious about our right to demand information, or else we lose all rights to question what information the administration does let us have.

with ineffectual managers and rich bosses and CEO's - power lies in the hands of the people who work to cook and serve our food, and workers receive an equitable share of the fruits of their labor. Student Contract Opportunities Finding alternatives to corporate food services will require a lot of research and development of innovative and creative proposals. Please contact atcfevergreen@hotmail.com immediately if interested in doing a study contract for fall term. We want you to become involved! Drop us an email at atcfevergreen@hotmail.com or contact Natalie at 704 5358 for more information and meeting times.

The Food Groups

The unique food service situation that faces us has spawned two campus working groups which are discussing and working on the food issues facing Evergreen today.

Participation in Food Decisions (PIFD) PIFD was created to insure that the selection of a food service at Evergreen is a highly participatory, democratic process that includes workers, students, faculty, and staff.

We will be working to make sure that the Evergreen community is kept up-to-date on the selection process and to ensure that the opinions, ideas, and criticisms or all are heard

in regards to what kind of food service will be at Evergreen next year and beyond.

PIFD will also make sure that questions of corporate accountability, and workers' rights and wages are addressed in the selection of a food service as these concerns have been neglected in the past. We will also make sure that more conventional concerns such as food quality, availability and cost are considered as well. Our next step is creating a survey to access the communities stance on all of these issues.

We need your help! Contact us with your name, phone number, and email address so we can keep

you updated on meeting times, events, and news. Contact pifdevergreen@hotmail.com or Steve at 705 9812

Alternatives to Corporate Food (ATCF) ATCF exists in order to explore options and develop proposals beyond a single corporate food service at Evergreen. Other options may include a cooperatively owned and run food service, a local vendor food court, university run food service, or some integration of the above.

A large corporate food service will, by nature, suck money out of our community. A locally owned food service at Evergreen would retain our community's resources, and be far more likely to provide living wages for its workers. In a cooperatively owned food service, the fat in the organization is cut along

TIMELINE

of food events

(Bear with us if you're new here, as we will be using some of Evergreen's uniquely delicious bureaucratic terminology)

Fall 1990 Northwest Food Service becomes the college's food service provider on a ten-year contract. The company is later bought out by the Fine Host Corporation.

12/10/97 Food Service Focus Groups formed by the administration to compile a survey on what types of food service Evergreen needs.

Groups included housing residents, full time students, student staff, administration, faculty, and staff. This information was used by the administration to form a survey, which focused on food preference and on campus location and did not address labor standards or corporate issues.

10/21/98 Food Service Design Disappearing Task Force (DTF) begins and works to create a proposal for modifications to the food service facilities in order to accommodate Evergreen's increasing numbers. (A Disappearing Task Force is a committee created by the college that makes decisions/recommendations/etc. on an issue affecting the campus.) At its inception, this DTF was open to all community members).

3/00 A Committee to create a Request For Proposal (RFP) for a new food service provider at Evergreen is formed by one of the administrators from the 1998 DTF. (RFPs tells private contractors what the College is looking for in bids for services to the college. The College cannot legally evaluate bidders on criteria not included in the RFP.)

The creation of this committee and its meetings are not advertised publicly. Around this same time, Fine Host workers begin quietly talking about organizing.

5/1/00 RFP for a 7-year food service contract issued only to the Daily Journal of Commerce Newspaper and to a vendor list recommended by a consultant to the RFP committee.

The RFP includes no mention of corporate ethics.

05/10/00 The Branch, the cooperatively run, student managed convenience store located in the HCC, responding to rumors, asks their supervisor at the book store if they will be impacted by the new food service contract. They are assured that there is only a small possibility, "10%-15%", that their business may be taken over by the new food service provider. They are told not to sit tight and not worry.

6/8/00 Proposals for the food service contract are received only from Fine Host and Sodexho-Marriott corporations

6/21/00 Sparsely advertised community interviews with Fine Host and Sodexho Marriott take place.

Only a few people show up to the first meeting with Fine Host and the majority walk in protest of the undemocratic, non-transparent selection process.

Word spreads quickly in the few hours between the two meetings, and about two

dozen people show up for the second meeting with Sodexho Marriott. The vast majority express frustration with the selection process and with both food service vendors, particularly Sodexho-Marriott for their fiscal ties to the for-profit private prison industry and the companies history of labor abuses.

The protestors demand a meeting with the committee for redress of grievances and present a petition gathered in the time between the two meetings with about eighty signatures of students demanding more participation in the food service decision.

6/26/00 RFP Committee holds a public meeting to discuss the concerns raised at 6/21/00 meeting.

The meeting is tense: many community members are outraged with the process and with the possibility that Sodexho Marriott will be the food service provider for the next seven years. The food service committee defends the selection process, and repeatedly denies all charges that Sodexho-Marriott is an unethical corporation.

It is publicly acknowledged for the first time at this meeting that the Branch may be given to the new food service provider, although the Branch workers are again assured that it is only a small possibility.

The Branch workers vocally and unanimously oppose being taken over.

6/28/00 "Stop Marriott" campaign begins.

Throughout the summer this group of about three dozen students, alumni, staff, and faculty works to expose and publicize Sodexho-Marriott's corporate misconduct to the community, the possibility of the branch being taken over, and the undemocratic way in which the food service contractor is being chosen.

The group researches Sodexho Marriott and the for-profit prison industry, meets with various administrators and members of the food service committee, threatens to encourage a full scale boycott of Sodexho Marriott if the contract is signed, presents a list of strict worker's rights provisions to include in the contract, performs "street theatre", hangs banners and signs around campus, and schedules a

public forum on the issues for 8/12/00.

7/14/00 Evergreen enters into Negotiations with Sodexho Marriott.

7/26/00 A member of the food service committee informs the Branch that they will be taken over by Sodexho-Marriott within the next two weeks. Branch workers are outraged that they were never consulted by the administration at any point during the process.

8/7/00 Negotiations between Evergreen and Sodexho-Marriott abruptly end due to the negative financial implications for both the college and Sodexho Marriott.

Contract with Fine Host extended to

the Academic Year 2000-2001. The Branch is not included in the extended contract.

8/12/00 Public forum scheduled by "Stop Marriott" takes place, with more than 100 people in attendance.

The history of the situation is discussed, and attendants (including staff, faculty, administration, and students) discuss their ideas for the future of food service, and how to make a better process for deciding the matter.

8/00 Discussions of organizing a union among food service workers resurface after Marriott loses contract. Workers come together to self-

organize the Evergreen Fine Host Workers Organizing Committee (EFHWOC).

8/29/00 People involved in the Stop Marriott campaign, members of EFHWOC, and other folks who attended the public forum form PIFD (participation in food decisions) and ATCF (alternatives to corporate food).

9/00 EFHWOC begins discussions of affiliating with representatives of several labor unions and planning of worker organizing and community outreach campaign for the 2000/2001 school year.

Late 9/00 You read this and decide to get involved in shaping the future of Evergreen's food service!

Astral Projections

by Courtney Haedt

New Moon- Wednesday Sept. 27- The New Moon is a time when we have the opportunity to create a plan for what we wish to accomplish by the next full moon. Be conscious of your daily routine. Allow for personal space to tune into your needs. Seek to create balance in your life, and use this week to work out any obstacles that may be standing in the way of your goals.

An important note to all astrology readers: the dates for the signs may vary a day or so on either end, depending on your source. You may be born on a cusp, between two signs. If one doesn't sound right to you, read the other. Put them together, balance them out. If neither sounds right to you- make up your own! My projections are possibilities, you are in control of your own destiny. Enjoy this with a light heart!

Aries- March 19-April 19

Be straightforward about your needs, Aries. Have you established a sufficient stomping ground? Do you have enough room to roam in? Make sure you get it now, before everything settles in around you and you find yourself surrounded. Be clear about communicating your personal boundaries to those who approach your space. Of course, as you lay down your law, remember to smile and remain calm. Breathe. Keep a lighthearted outlook when you go to discuss the details, and the reception of your ideals will be heeded with a lot less strain than if you were to aggressively demand the cooperation of your neighbors, teachers, and any others who you come in contact with. You certainly deserve to get what you need, but keep the needs of others in mind too. Some compromise may be necessary; just be sure that you aren't the only one making all the accommodations.

Taurus- April 19-May 20

Feel out your daily routine and make note of any changes that need to be made. Where do you feel like you are coming up short? What is missing from your life that you may need to acquire? Use this week to figure out how you want the details to fall into place. Establish a clear vision in your mind's eye of that which you wish to call to your life. Dream it up in lucid visions at least once a day; all the while certain that you have the power to make manifest your truest desires. While the results may not be immediate, they will be set into motion once you make a conscious choice thus greatly influencing the probability of a successful outcome. The key is to be very clear about what you want to bring into your life. Meditate on the many possibilities, and then choose what calls to you most intensely. Stick with your decision, and allow yourself to manifest what you wish for over the next few weeks.

Gemini- May 20- June 20

Have you made any choices that you regret lately? Why bother torturing yourself with what-ifs and if-onlys? It just drains your energy and clouds your vision, which isn't going to help make better choices. You see? You

see and you know you do. You knew before you took action what would happen, even if that's hard to admit, because you were trying not to pay attention to the consequences. I am in no way chiding you, Gemini. In fact, I consider myself an advocate of your immense potential and the actualization thereof! It just seems like you are experiencing difficulties feeling sure of the decisions you have made recently, and I'd hate to see you detach and isolate yourself from those who love you. So why not pay more attention to that voice inside you? The one that knows exactly what to do? Listen....

Cancer- June 20- July 22

How do you feel these days, Cancer? Was that a sigh? Maybe something is bothering you that you just can't put your finger on. What could it be? That little cloud of dissatisfaction needs to be cleared away. If you are feeling any emotional upset, anger, jealousy, or loneliness, ask yourself why. What is the source of your unease? Envision it. Call it up and look it square in the face while you have some alone time. If it appears to be coming from a source outside yourself write a letter expressing how you feel to that person, place, or thing- but do not send it. Read it to yourself and sort through your reactions. Do this for a few days; until you feel like you've gotten it out of your system. Then take your little collection of letters and burn them. Let your worries ceremoniously disappear. Poof!

Leo- July 22-August 22

Participate enthusiastically in the creation of your new life, Leo. Now is the time to ignite your dramatic spark! Don't know anyone? Make new friends! Don't know what to say? Make something up! You are just bursting with creative potential and the world is preparing to witness its glory. Invent new words and watch them spread! Make a fashion statement and watch it catch on in the crowds! You have never been where you are now, so let go of the past and create the future with gusto. As you do so you will draw a new circle of friends; so entertain them with your blooming ideas of the world. Say things sporadically that you didn't know you thought until they exited your mouth. Then go ahead and change your mind! Moreover, always remember to laugh at people who ask for proof of your radical new ideas. Tell them you are in the experimental phase, if you must, and go merrily on your way. Any person or idea that sticks around long enough after your delightfully ridiculous behavior is sure to be right on.

Virgo- August 22-September 22

If I could make one wish for you, it would be that you will acknowledge your beautiful powers to live a happy, healthy life full of satisfying love. Beautiful- as you are. Powers- which you have. Living- as an active soul. Happy- as you can be. Healthy- as you are whole. Full- of what you wish for. Satisfying- that you may be at peace. Love- for all that surrounds you and is within you. See how I pulled all those neat-o attributes into one big fat wish? (I could have gone on but I only have a little column...) It would be even more wonderful if you would make your own big fat wish about what your life could be. Include all the amazing attributes you can

possibly think of, and write it down in rainbow colors and display it somewhere you can see it every day. Read it with joy out loud, and allow yourself to believe it. It is your own wishes for your self, and your allowance of them to come to pass that will be necessary for the realization of your dreams. You make it happen.

Libra- September 22-October 22

Happy Birthday, Libra! Now is your time to reflect on the past year cycle and celebrate your growth. Take note of any troubles you had and learn from your mistakes. This means: don't dwell! See it, know it, and let it go! Plan for this New Year well. Decide on some essential issues that you would like to address, and think of effective ways to accomplish them. Bring your body, heart, and mind into balance. Tap into your true soul self and create your own fulfillment. You have come a long way from where you started from, congratulate yourself on a job well done. Be sure to finish off any final details that may be lying around from unfinished projects. This will free you up to encounter new exciting activities. Hone in on the skills you have developed over the years and plan to use them well. You have created a strong base to work from. Your time is now, so take it

Scorpio- October 22-November 21

Use your resources wisely. You should have a fair amount of useful items, ideas, and interests in your repertoire. Now is the time to reach into your stash and sort through what you have collected. Set aside those things that will be of use to you now. Add them to your daily conversations, carry them in your daypack, and set them up around your desk. These are your power tools... your strong connection to wisdom, your keys to the future. You have much to work with. Chances are, you have so much it is a little overwhelming. In the delight of re-discovering things you thought you had lost, or simply just forgot about, keep an eye out for things that you really just don't need. Give them away to someone you know will appreciate something you once loved, and they will once again be useful. Take what you have leftover; those neat-o things that you don't really need right now, but aren't ready to let go of, and put them in a special box that you can rummage through on rainy days.

Sagittarius- November 21- December 21

Put a magic bubble of light around yourself as you walk through this week. It will protect you from the energies bouncing all over the place. No time for distraction; now is the time to focus in on what you have on your plate. What a tasty array of delights you have worked into your schedule, Sag. Bask in the little world that you managed to create for yourself. Are there some final details to attend to? Do it now while you can! The whirlwind of activities is just firing up, and if I know you, you have a lot going on. As this new fall cycle takes root, work in a healthy dose of foresight into your daily schedule. Use this time to get a jump on what is to come. The art of procrastination may always seem to pull you through, but you will be amazed at what you can accomplish if you work at it bit by bit along the way. Remember that your magic bubble keeps you clear in your own space, so call it up if you start feeling

overwhelmed.

Capricorn- December 22-January 20

Be patient, my friend. It is all working out for you, be sure of it. Some things just take time. So slow down a little. Stop rushing around and breathe. Have a seat in a comfy space and listen to some music, or something that will calm your nerves. There is a lot of newness in your life, and this is a good thing. As you settle into a routine, remember to set a comfortable pace so you don't tire yourself out too fast. Your ambitions may be trying to get the better of you, pushing you forward at breakneck speed. Pull the reins and keep control and things will go smoother. Rely on your intuitions to let you know when you really have to get there and let the rest fall into place. Forcing things to happen often leads them to crumble fast, so if something is not working out as you had planned reconsider your motives. It could be to your advantage to shift your perspective on the matter; give yourself plenty of time to think it over.

Aquarius- January 20- February 19

Feeling rebellious? Just don't want to conform to someone else's rules? Make up your own rules, Aquarius! Write them down. Create laws that you can live by. If others are trying to force you into a corner, take a good look at their motives. Are their intentions for the best? Are you communicating your needs clearly to those who affect you? Maybe you are feeling whacked out by someone's actions or advice. Something may have gone down that wierded you out but you don't know just how or why. Look it over well. Figure out exactly what you have a problem with and all the reasons why. Write them down in your new Constitution of Self, that no one may trespass in these ways because... and fill in the blanks. Use this new document as a back-up tool for future discussions when you will have to lay down your law. Plain and simple, it is your life. You of all people should be perfectly capable of making your own way.

Pisces- February 19-March 19

You may be feeling like you are being bombarded. Retreat! Just for a little while. Seclude yourself in order to be clear about the energies attacking your space. Perhaps you are just picking up on all the wildness in the air. If so, build up your energy and make sure that you can go out into all that you have to face in the world without feeling zapped at the end of the day. You have a lot to deal with right now, and it won't help to waste precious energy worrying about other people's problems. If someone is directly attacking you (mentally, spiritually, emotionally), go by means- get away from them! It would do you good to have your own space to take the time to understand the situation. It is difficult to see clearly when you are deep in the moment of the situation. Make your retreat a sacred one, you need to recharge. Decide how you feel about everything before you attempt to confront the issue. Nurture yourself for the time being.

U'WA TRIBE FACES CULTURAL CATASTROPHE

By Shoren Brown

The traditional U'wa tribe, with some 5,000 people living in the cloud forests of northeastern Colombia, received notice last week of the government's plan to evict them to make way for Occidental petroleum's final shipments of drilling equipment. As a result, there has been an incredible wave of solidarity actions here in the States. Across the country, activists are confronting Vice President Al Gore and demanding that he use his personal and political connections to Oxy and the Colombian government to stop the drilling on U'wa land.

U'wa leaders have also called on Gore to speak up in their favor and for the protection of their land. Over the last year Gore has come under increasing public criticism for his long-time, personal and financial connections to Occidental. Concerned citizens have targeted Gore with protests at more than 50 campaign stops across the country in recent months, calling on him to take a stand for the U'wa.

Gore has deep personal and financial ties to Occidental, including family investments of up to \$1 million in the company. Gore's father, following his Senate career, sat on Occidental's board of directors. Occidental has also been a generous and frequent donor to the Democratic Party and Gore's presidential campaign. To date, Gore has refused to take a

public stand against this project, which will inevitably result in environmental damage and human rights violations.

"It's a time of reckoning for Al Gore, the supposed 'environmental vice president,'" said Lauren Sullivan of Rainforest Action Network. "Either he take a stand against this project which threatens the U'wa people and their environment or expect this conflict to rear its ugly head at every campaign turn."

September 19th proved to be an amazing day for rallies and actions in support of the U'wa. Santa Rosa, California; Madison, Wisconsin; Des Moines, Iowa and Olympia all saw picketing, office occupations and various other demonstrations.

Here in town there was a rally at Sylvester Park where Greg LaDuke Grove, a local Cowlitz staff and drum carrier gave an inspirational speech. The rally was followed by a funeral procession, complete with puppets and coffins, to the Democratic Party's office in downtown Olympia. At noon 200 activists occupied Al Gore's offices, some vowing to stay through the night and beyond, until the Vice President came out against Occidental Petroleum's drilling project. Throughout the day there was street theater and a banner was hung over the street to educate people on the issue. Twelve activists were arrested in all, after a lock down and occupation that ended in three

activists being half carried and half dragged from the building with bicycle locks still attached to their necks.

Outside the office, police swung billy clubs wildly at non-violent protesters and used excessive force to control those who sat blocking the police vehicle that presumably was arranged to haul the final arrestees to jail. These last protesters became "unarrested" and were let loose when the police realized they could not remove the locks, and that they had failed to intimidate or subdue those who had gathered outside. Within five minutes of the removal of the last protesters from the building, there was not a policeman in sight.

Eight years into a non-violent campaign by the U'wa to block drilling and tension on the ground in Colombia is rising. The tribe has warned for years that if the oil project goes forward the area will become another center of violent conflict between the military, paramilitaries and guerilla factions in the country's three-decade-old civil war. Recent reports from the U'wa seem to confirm those longstanding warnings. U'wa leaders say the Colombian military has planted land mines on indigenous lands to protect Occidental's planned drilling and went a step further this week by shooting at U'wa farms from circling aircraft.

TAHOLAH STUDENT DIES

Michael Curleybear, a student enrolled in the reservation-based program in Taholah, died on campus Sunday, September 17. Michael had finished a class in the Longhouse and collapsed on the way to his car. Fellow students, his instructor, and Police Service's Pamela Garland, performed cardiopulmonary resuscitation until an aid crew arrived.

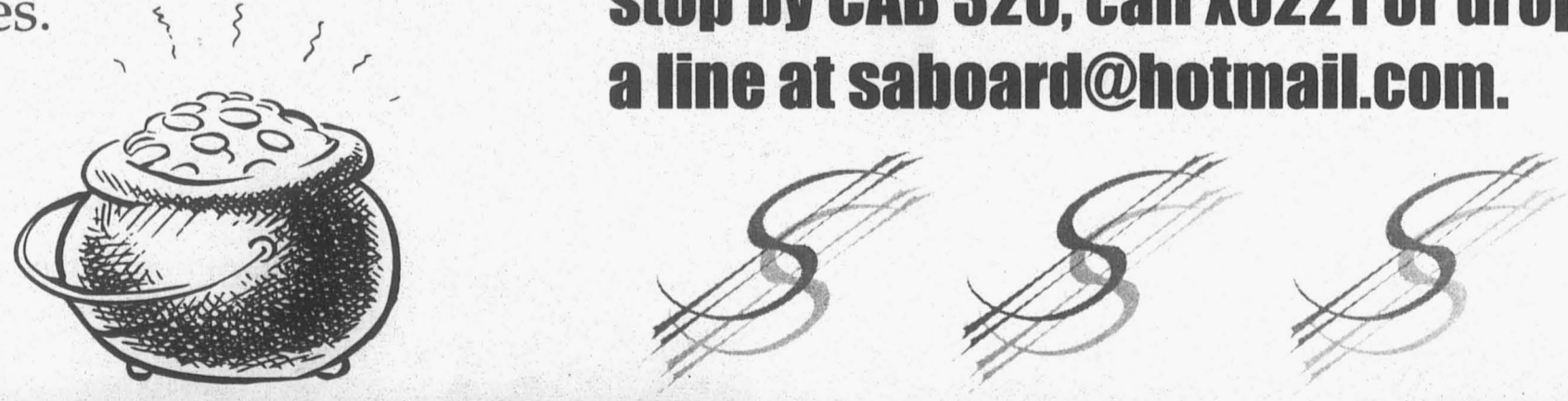
Faculty member, Michelle Aguilar-Wells, says Michael considered himself an entrepreneur. A spiritual person, Michael was an inspiration to his fellow classmates, encouraging them in their efforts and struggles to complete their education. He was deeply engaged in his learning and saw great value in education.

Michael, a Quinalt tribal member, is survived by his wife, Ann Curleybear, his son, Michael, six grandchildren and two great-grandchildren.

Funeral services were held on Saturday, September 23 in the Taholah School gymnasium. Burial followed at the Taholah cemetery. Remembrances may be sent in care of Michelle Aguilar-Wells at PO Box 215, Taholah, Wash. 98587.

The S & A Board needs your help spending over \$1.2 million of our Student fees.

We're looking for nine students who are excited about student activities and willing be a part of the Board. For more information or an application stop by CAB 320, call x6221 or drop us a line at saboard@hotmail.com.



Deadline: 5 pm, October 13, 2000



Traditions Cafe & World Folk Art

"Care to know where your money goes?"

Support fair trade with low-income artisans and farmers.

We are:

- A center for fairly-traded products from around the world
- A cafe with good food
- A performance space for concerts, classes, forums, and more

Website: traditionsfairtrade.com
300 5th Ave SW, Olympia - 705-2819
"Just a splash from Heritage Fountain & Capitol Lake"

CLASSIFIED LESSONS Shaolin Eagle Aerobics and Self Defense classes for women taught by instructor Jessie Smith. Oct. 9th thru Dec. 8th on Mon., Wed. & Fri. in CRC 116. 5:30 - 6:20 - Self Defense, 6:30 - 7:30 - Aerobics. \$75.00

THE KLA
425 Franklin, Olympia 360.352.1855

Open Tuesday - Sunday 5pm - 2am
GREAT FOOD & COCKTAILS!
Dinner 5-10pm • Happy Hour 9-7pm
www.thekla.com

- T** SWING w/THE HOT 5, 6p-11p \$4
- W** HIP-HOP, \$3, WOMEN FREE
- TH** QUEER NIGHT, DISCO & MORE, \$2
- F** FUNK, HIP-HOP w/MC QUEEN LUCKY, \$5
- S** HOUSE, HIP-HOP w/JOEY LA ROCK, \$5
- S** FUN 80's & MORE w/DEAD AIR, \$1 KARAOKE 7-10P SUNDAYS, ALL AGES

Fri., Oct. 6 Two Ton Boa 8pm, all ages, Free!

Starting Weds., Oct. 11: ROYALE...House with Donald Glaude & dj Dab all ages/bar with i.d. every Weds.!

* All ages events: Tues. swing dance 6-10p all ages. Weds. (starting Oct. 11) house, 8-2a, all ages all night!

Kung Fu Champions

by Shasta Smith, Jesse Harter and Johnny Eastlake, Kung Fu Team members

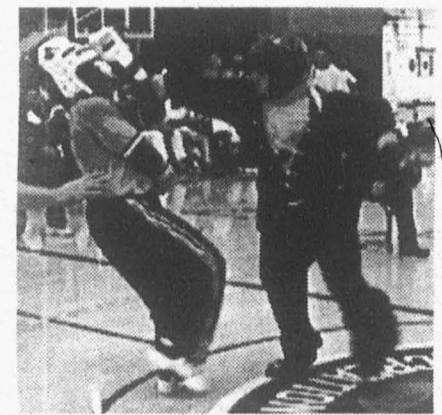
There is an organization on campus that has been winning in Evergreen's name for the past three years.

Since its creation, Bak Shaolin Eagle Claw Kung Fu Team Evergreen has competed in and won a number of tournaments across the country. The victories from the past year have caught the attention of the martial arts world, and the team will appear in a feature article in the nationally syndicated magazine *Inside Kung Fu*.

This summer, Team Evergreen hit the open karate circuit hard, competing in seven tournaments that ranged from central Oregon to Vancouver, British Columbia. Time and time again Team Evergreen won medals disproportionate to the number of members competing.

These victories have had a resounding impact in the National Blackbelt League. The NBL is a sport karate organization that spans fifty-two countries and has twenty-four conferences from the Americas to Europe. Members of the team have received top regional rankings in the Pacific Northwest Conference and are rated among the top competitors in the world. This ranking, regionally and nationally, means that Team Evergreen is being invited to the NBL World Championship Super Grands XI, which is the Super Bowl of sport karate.

This accomplishment is in itself amazing.



but is magnified by the fact that Team Evergreen is one of the only kung fu teams competing on the NBL circuit, which is an American Open Karate venue.

Three of the top qualifying tournaments from this summer include:

Can-Am Internationals

The weekend of June 24 saw a core crew of six team members competing in the NBL rings at this Vancouver tournament. The NBL was in control of the stadium all day with top regional and national karate competitors trying to get points for this year's upcoming Super Grands.

As the tournament progressed throughout the day Jesse Harter showed his skill and power taking a silver medal in the forms rings while Loa Arnoth's clarity and focus earned her a bronze. These medals added points towards Harter and Arnoth's standings in the NBL Super Grands.

Competing in one of the traditional weapons rings, Harter woke up the crowd with his thundering Shaolin staff form, one of the oldest, most powerful styles of staff fighting. This tournament marked the first time John Eastlake, Shasta Smith, Katherine McLaine, and Owen O'Keefe competed at the black belt level, even though they weren't yet ranked as such.

In the NBL point rings, Harter came up against sixth-ranked national fighter Tim Gustavson. Harter moved up to the super heavyweight division specifically to have a chance to fight Matheson.

After a few exchanges, Gustavson scored a solid point with a left foot roundhouse to Harter's chest. Harter shook it off and came right back hammering Gustavson's leg and

torso with kicks and punches. It was a solidly contested fight, which ended with Gustavson ahead by a few points.

Dan Anderson, Gustavson's coach, a well-known author, and legendary point fighter, applauded Harter's style and power. "Lots of spirit," he said. "Good fight."

In the women's black belt fighting division Arnoth and McLaine fought hard. Arnoth was off to a strong start against her opponent, a Tac Kwon Do stylist, but was unfortunately disqualified for drawing blood. McLaine showed her fighting tenacity coming back from a bloody nose to fight two more fights, eventually placing fourth.



Team Evergreen also competed in the NBL team-fighting ring. Smith, Eastlake, and Harter fought against a Canadian team, with Smith and Eastlake having low-scoring rounds despite delivering heavy hits. Harter fought well, going toe to toe with his opponent. The team ended the division taking bronze.

The 12th Western US Nationals

This tournament kicked off Friday night with Shasta Smith taking a bronze in the middleweight ring. He fought a heated rematch with a fighter he had competed against just a month before in Vancouver and evened the odds with his competitor by fighting aggressively and scoring a nearly equal number of points (22-26).

The women's fighting team also scored highly. Arnoth took the bronze in the lightweight continuous fighting ring by repeatedly landing piston-like kicks. In the three-person Team Fighting, the Evergreen women took the silver after a rough match. Jessie Smith attacked with a quick swinging hook that drew blood and knocked her



opponent to the ground, earning her a disqualification.

On Saturday, Arnoth again demonstrated her relentless kicking style, taking silver in the blackbelt point-fighting ring. Jessie Smith also progressed in the division, taking a bronze after a fierce fight against another nationally ranked fighter. Team Captain and leading blackbelt Jesse Harter rose to the occasion Saturday displaying his skill and power by taking a silver medal in the blackbelt point ring. After taking apart his first two opponents with devastating kicks and lightning fast punches, Harter fought Bill Hunter, who is ranked first in the region and sixth in the world.

The fight was intensely contested, with Harter holding back his power to avoid disqualification and scoring two rapid points before falling to the finesse of the veteran point fighter. Other nationally ranked fighters watching the match commented that Harter's fighting style has improved exponentially over the past couple months. Bill Hunter said, "He really hits hard and all I could do was duck and run to get outta there."

On Saturday, Team Evergreen excelled in the competitions once again. Harter demonstrated his considerable Shaolin skills, winning yet another silver in two divisions while Arnoth received a bronze. In the advanced rings Shasta Smith, John Eastlake, and Owen O'Keefe placed second, fourth, and fifth respectively.

Battle in Seattle

The USA National Karate Championships on September 19 and 20 were the last major NBL qualifying tournament

before the World Championship Super Grands. Team Evergreen consisted of twelve competitors including visiting National Team Captain Noam Reiningger and Regional Team Captain Sam Haskin. Dave Weber, The Evergreen State College Athletic Director, attended to show his support for one of Evergreen's most accomplished competition teams. Together the team swept the tournament, winning 34 first, second, and third place medals in all. Arnoth, ranked first in the Pacific Northwest and third in the Western Pacific for Creative Musical Forms, again performed an excellent display of contemporary Wushu and took first place in the division. Harter followed her in second place and Shasta Smith, debuting in the blackbelt arena, took third. Harter demonstrated the speed and power of traditional Eagle Claw Kung Fu, winning a gold in the traditional forms division. He was followed closely by Reiningger who performed an equally powerful Eagle Claw form to take second, and then by Arnoth who took third.

Reiningger and Harter took first and second in the weapons ring with two ripping Shaolin staff forms. The team was especially honored by the center judge who complimented them on their spirit and teamwork.

In the Point Fighting, Continuous Fighting, and Team Sparring divisions, Team Evergreen won twenty-one first, second, and third place fighting medals. Harter landed another first place medal while Reiningger took first in the lightweight Continuous Sparring. Moving up to middle-heavyweight, he took second and was followed by John Eastlake, a debuting blackbelt who secured third place.

In the women's Continuous Fighting rings Jessie Smith, number one female Continuous Fighter in the Pacific Northwest, dominated with her patented hook punches, taking first place hands down. Arnoth was close behind finishing second in the event. Other highlights in the Continuous Fighting rings included Shasta Smith's second-place medal in the light-middleweight division, Owen O'Keefe's first place, and Sam Haskin's second place medal in the super-heavyweights division.

The Point Sparring rings were lit up when Reiningger demonstrated the traditional, quick, and highly effective Bak Shaolin Eagle Claw fighting style, taking second in the lightweight division. Other standings in the point divisions included Harter's second and Eastlake's third place standing in the heavyweight division, Haskin's second in the super-heavyweight division, Arnoth's second in the women's lightweight division, and Jessie Smith's third in the women's heavyweight division.

Team Evergreen's victories were achieved through the teaching and coaching of Grandmaster Fu Leung and Sifu Dana G. Daniels.



Team Evergreen Going to the World Super Grands

From the beginning of the season in January 2000, Team Evergreen has been competing and winning in the National Black Belt League. The NBL sanctions tournaments that award points to winning black belts in forms and fighting divisions. These points are amassed by competitors throughout the season and are used to calculate rankings, regionally and nationally. Team Evergreen has six members ranked regionally of which three also have national rankings. The rankings guarantee invitation to the Super Grands World Games XI in Savannah, Georgia. Nationally ranked members will receive seeding in respective divisions which automatically puts them closer to the national titles. As several Team members are ranked number one in the Pacific Northwest Conference they will be at a significant advantage over most of the field when they arrive in Savannah. We look forward to bringing home national titles to The Evergreen State College.

Player	Division	Conference Ratings		
		Pacific Northwest	Western Pacific	National Standing
Team Captain Jesse Harter				
Soft Weapons Forms	1st	3rd	Top 9	
SoftForms	1st	5th	Top 15	
Soft/Creative Musical Forms	4th	5th	Top 15	
Continuous Sparring Light/Heavyweight (184.8-)	1st	7th	Top 21	
Point Sparring Light/Heavyweight (184.8-)	3rd	7th	Top 21	
Continuous Sparring Heavyweight (200.2-)	8th			
Loa Arnoth				
Soft/Creative Musical Forms	1st	3rd	Top 9	
SoftForms	2nd	3rd	Top 9	
Point Sparring Featherweight (132-)	4th			
Continuous Sparring Featherweight (132-)	5th	6th	Top 18	
Jessie Smith				
Point Sparring Middleweight (143.1+)	1st	7th	Top 21	
Continuous Sparring Featherweight (132-)	5th			
Lightweight (132+)	5th	6th	Top 18	
Soft/Creative Musical Forms	7th	7th	Top 21	
SoftForms	7th			
Sam Haskin				
SoftForms	3rd			
Continuous Sparring Superheavyweight (200.2+)	6th			
Shasta Smith				
Point Sparring Light/Middle weight (162.9-)	5th			
Continuous Sparring Light/Middle weight (162.9-)	6th			
Katherin McLain				
Point Sparring				



Oh, the Places You'll Go I.T. is Your Ticket to Life Off Campus!

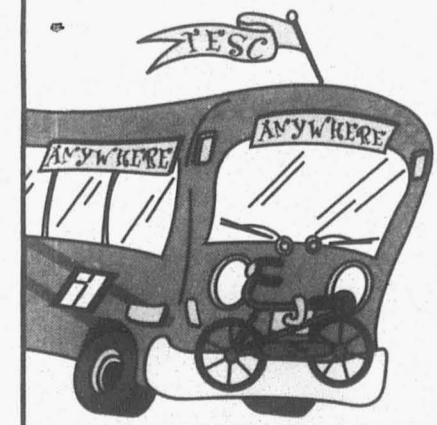
Show your current Evergreen student ID with current term sticker when you hop an I.T. bus and ride free. It's that easy! Skip the parking hassles, be earth-friendly, and save some cash.

Here are just a few of the popular places you can get to on Intercity Transit.

Destination	Route #
Bagel Brothers	44, 45, 47, 48
Batdorf & Bronson	12, 13, 15, 42
Burrito Heaven	41, 48
Capital Mall	44, 45, 47, 48
Farmers Market	13 or 3 blocks from OTC*
Goodwill	44, 45, 47, 48
Lacey Cinemas	62A, 62B
OlyBikes	by OTC*
Orca Books	62A, 62B, 64, 66
Olympia Food Co-op (Westside)	41
Rainy Day Records	41, 48
Safeway	44, 45, 47, 48
Tacoma (w/ connections to Seattle)	601X, 603X, 605X, 620X
Thekla	2 blocks from OTC*

For more info on routes and where I.T. can take you, swing by the TESC Bookstore and pick up a "Places You'll Go" brochure and a Transit Guide, containing everything you need to know about I.T. Or you can call Customer Service at (360) 786-1881 or visit us online at www.intercitytransit.com.

Intercity Transit
Fares paid through student programs.



WELCOME NEW & RETURNING STUDENTS!

Stock your kitchens with Olympia's largest selection of whole, organic and natural food from

OLYMPIA FOOD CO-OP

•community-run natural food store

•save money by volunteering!



WESTSIDE: 921 N. Rogers (corner of Rogers & Bowman) 754-7666

EASTSIDE: 3111 Pacific 956-3870

BLUE HERON BAKERY
4935 - MUD BAY ROAD
OLYMPIA, WA 98512
866-2253

NATURAL WHOLE GRAIN BAKERY

SINCE 1977

OPEN 7AM TO 6PM DAILY

Pick A Book

Browsers' Book Shop
NEW & USED
107 North Capitol Way
357-7462

ROLL WITH DA COCKO

OLD SCHOOL PIZZERIA
106 FRANKLIN OLY, WA 98501

RETIREMENT INSURANCE MUTUAL FUNDS TRUST SERVICES TUITION FINANCING

While TIAA-CREF invests for the long term, it's nice to see performance like this.

Check out other account performance on the Web

TIAA-CREF has delivered impressive results like these by combining two disciplined investment strategies.

CREF GROWTH ACCOUNT ³		
26.70%	27.87%	26.60%
1 YEAR AS OF 6/30/00	5 YEARS 6/30/00	SINCE INCEPTION 4/29/94

In our CREF Growth Account, one of many CREF variable annuities, we combine active management with enhanced indexing. With two strategies, we have two ways to seek out performance opportunities—helping to make your investments work twice as hard.

EXPENSE RATIO	
CREF GROWTH ACCOUNT	INDUSTRY AVERAGE
0.32% ¹	2.09% ²

This approach also allows us to adapt our investments to different market conditions, which is especially important during volatile economic times.

Combine this team approach with our low expenses and you'll see how TIAA-CREF stands apart from the competition. Call and find out how TIAA-CREF can work for you today and tomorrow.

TIAA-CREF Ensuring the future for those who shape it.™

1.800.842.2776
www.tiaa-cref.org

For more complete information on our securities products, please call 1-800-842-2773, ext. 5509, to request prospectuses. Read them carefully before you invest. 1. TIAA-CREF expenses reflect the waiver of a portion of the Funds' investment management fees, guaranteed until July 1, 2003. 2. Source: Morningstar, Inc. 6/30/00, tracking 939 average large-cap growth annuity funds. 3. Due to current market volatility, our securities products' performance today may be less than shown above. The investment results shown for CREF Growth variable annuity reflect past performance and are not indicative of future rates of return. These returns and the value of the principal you have invested will fluctuate, so the shares you own may be more or less than their original price upon redemption. • TIAA-CREF Individual and Institutional Services, Inc. distributes the CREF and TIAA Real Estate variable annuities. • Teachers Personal Investors Services, Inc. distributes the Personal Annuities variable annuity component, mutual funds and tuition savings agreements. • TIAA and TIAA-CREF Life Insurance Co., New York, NY, issue insurance and annuities. • TIAA-CREF Trust Company, ISB provides trust services. • Investment products are not FDIC insured, may lose value and are not bank guaranteed. © 2000 TIAA-CREF 08/03

Time to get busy...

Thursday 9-28

Obo Addy's Okropong- Evergreen Expressions hosts West African dancers and drummers at the Washington Center for Performing Arts 512 Washington St. SE. Show starts at 7:30 p.m. \$10 for students.

Movies about Trees-Sustainable Forestry Program presents films about the future of our forests. Lecture Hall 5, 3-5p.m. FREE.

Communicating to Connect- Olympia Fellowship of Recognition presents a series of workshops developed by the Center of Nonviolent Communication. From 6:30-8:30 p.m. at Lincoln School cafeteria, 213 21st Ave SE.

Saturday 9-30

Happy is Good- Olympia's State Theater presents *Hapgood*, a Tom Stoppard play. Run s through Oct. 7. Shows are Thurs-Sat 8 p.m.Sundays at 2 p.m. on 204 E 4th. Tickets range from \$15-\$22, call 786-0151 for tickets.

Soccer= Hard- But watching it is easy as pie. Come cheer on Men's Soccer as they take on Warner Pacific at 1 p.m. on our home field.

Tuesday 10-3

Get on the Boat- Olympia Wooden Boat Association meeting at "The Place," 222 Madrona Beach Road. Social hour begins at 6 p.m.; meeting starts at 6:30 p.m.

Input Needed-Thurston/Mason Chemical Dependency Advisory Board needs feedback regarding chemical dependency treatment and prevention services in Thurston County. Ideas for improvement will be discussed at the Health Department on 529 4th Ave W from 6-7:15 p.m.

Thursday 10-5

Mexican Human Rights Activist- Hilda Navarrete, a leading activist for human rights from the state of Guerrero, Mexico, will be speaking on the ongoing struggle for indigenous and human rights and democracy in Mexico. She will speak at 12 p.m. in the Library Lobby and at 7p.m. at Traditions Cafe on 5th and Water in downtown Olympia.

Ice T- Legendary rapper lectures at Pierce College at Fort Steilacoom 9401 Farwest Drive SW. Lakewood. Starts at 7 p.m. Tickets are \$15; available at Ticketmaster outlets or by calling (253) 964-6283.

Friday 9-29

Everybody was Kung Fu Fighting Support our local Kung Fu Club and catch three back to back flicks. Lecture Hall 1, starts at 9 p.m, \$3.

Ra Ra Sis Boom Ba Men's soccer kicks some balls at the Western Baptist players. Home field, 3 p.m.

Queer Meeting Get out of the closet and come to the Evergreen Queer Alliance's introductory meeting at 4 p.m. in the CAB. A queer movie will be shown in A dorm following the meeting.

Women Meeting The Women's Center is having a meeting to discuss their new vision. The meeting starts at 2p.m. in CAB 315, the student activities room.

Monday 10-2

Vote Register to vote on Red Square, check out the WashPIRG booth.

Sunday 10-1

Relax. Take a bath.

Wednesday 10-4

Come one Come All- Community potluck for students, faculty and staff sponsored by First People's Advising Service, KEY and Access Services, and the Career Center. Yummy food, nice people, great fun starts at 5 p.m. at the Longhouse. Please bring an edible item to share with the community.

Sydney is Far Away- Our games aren't. Women's Soccer takes on the Western Baptists at 3 p.m. right here in the All American City of Olympia, WA.

Helen Thomas- Has canceled her speaking engagement at Pierce College tonight. Tickets purchased with credit cards will be automatically refunded, otherwise call (253) 840-8416. Sorry Duuuudes.

Labor History Night-Evergreen's Tacoma Campus features speaker Nellie Stone Johnson, a 94-year old African-American Labor Rights activist. Also included is a panel of labor union activists and a dance performance by Evergreen Faculty member Kabby Mitchell. Reception at 6 p.m. program runs from 7-10 p.m. 1202 Martin Luther King Jr. Way. It's FREE. Call TESC Labor Center for more info, 866-6000 ex. 6525.

Welcome Mass- Father Bill Bixel gives a Mass followed by a lecture on his experience fighting the School of the Americas. Begins at 7p.m. in Cab 110.

Call the Pres- National Forest Call-In Day. Join college students throughout the west coast as they dial 1-877-730-3377 (toll free) from 10 a.m. to 1 p.m. and bombard the White House with calls to convince Clinton to pass a plan that will protect 60 million acres of national forests.

Student Groups

Rugby Club Contact Jon at 943-3854 or brokenvw@yahoo.com. All experience levels welcome. Practice 5:30, Bush Park in Lacey, Tuesday and Thursday. First game with Olympia Rugby Club on the 30th.

Common Bread Explore your relationship with God Monday evenings at 5 in the Organic Farmhouse, or meet in front of the library to walk over. 352-6214 or gojio@earthlink.net.

What is **EQA**? Evergreen's own queer student group. Three coordinator positions available. Applications due Monday, October 2nd. Plan Coming Out Day for October 11th. Drop by CAB 314 any time. 867-6544 or evergreen_queer_alliance@hotmail.com.

Everyone else come by the **CPI**, CAB 316, as soon as soon as you hire a coordinator so we can list your meeting times and such. If you gave us that information but don't see it listed that means we messed up so let us know. We know you will!

TREMORS IN THE FORCE BY ZEBEDEE R. WILSON



THE FALL OF ANAKIN SKYWALKER.

