


ReView

November, 1988; Volume 10, Number 1

Inside: Peoples of Washington



The Peoples of Washington exhibition was created to tour the state as part of the year-long Centennial celebration. Walking through the exhibition is like being *Alice in Wonderland*, only it's you who's ambling through the giant pages of a family album of Washington state. There are 40 panels loaded with riveting photographs—more than 200 images in all. Wherever it travels, it will give a historical portrait of this particular corner of America, but the exhibition will also paint a mosaic of the diverse peoples who have come from around the world to form the state we know today.

Peoples of Washington is on display in Gallery 4 of the Evans Library at Evergreen through the end of this month. This premier is appropriate, since Evergreeners conceived and helped produce the exhibit, and celebrated its opening with Peoples of Washington Weekend, November 11 and 12.

Welcome to the *ReView's* Peoples of Washington preview including a word with the creative Greeners who helped make it happen.

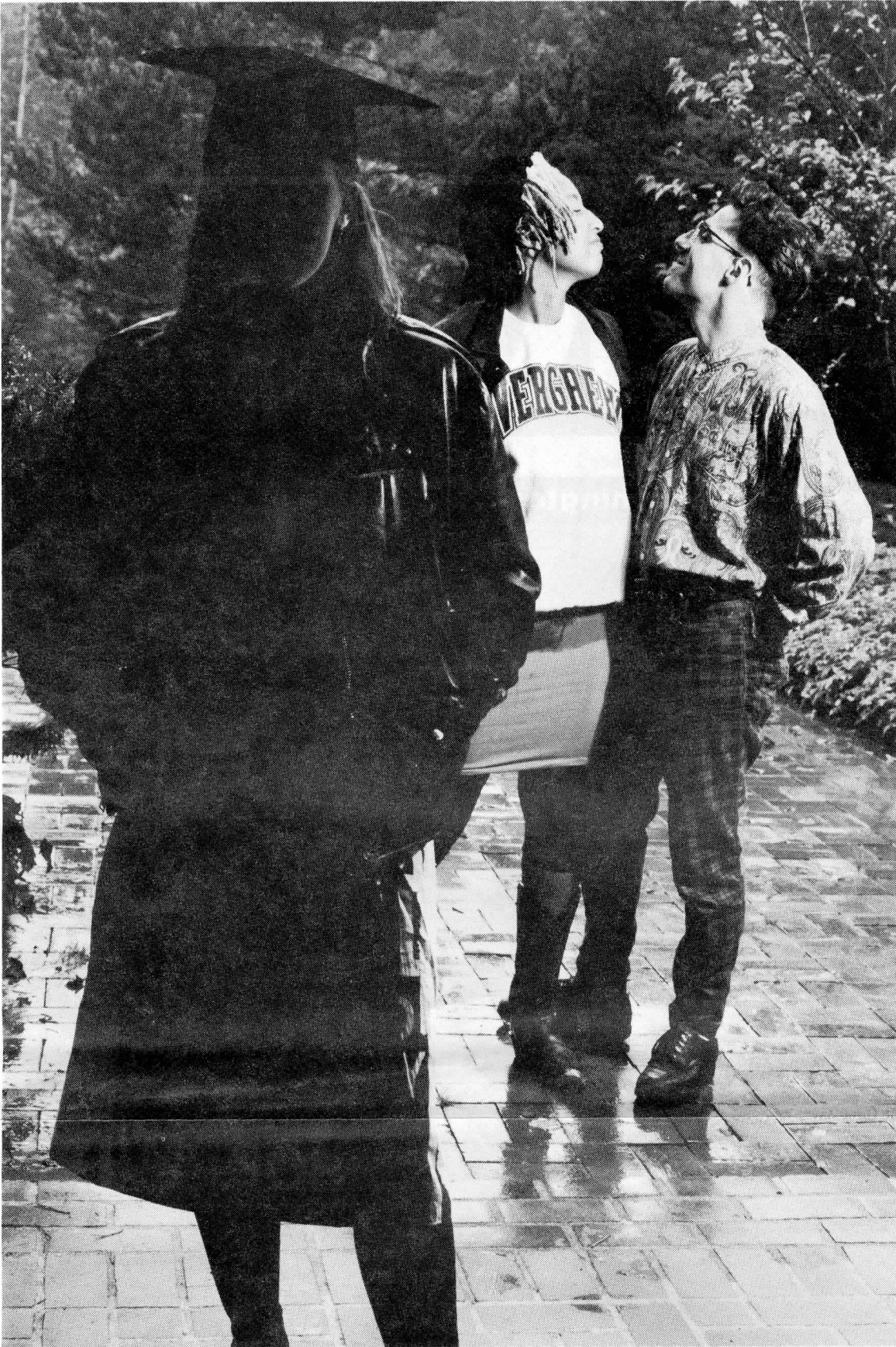


Tableau of the new

It was a chilly evening outside the Seminar Building when new students **Onika Gilliam**, **Costas Delyanis** and **Tammy Rae Carland** met for an orientation improv in the photo at left shortly after their arrival on campus Fall Quarter. At right, Gilliam (in her Bookstore buy-of-the-week sweatshirt) and Delyanis (in casual wear he described as uniquely his own) concentrate on the here-and-now of Evergreen education by engaging in a classic pre-seminar warm-up exercise. Meanwhile at left, shielded from the Northwest cold by her Geo-leathers, Carland contemplates a misty future that holds her eventual graduation with the class of '92.

Fall Enrollment Adds Up

You name the type of threads and Greeners not only try out all kinds of styles, but push them to new levels of expression. Greener-watchers have more to view this fall as 3,250 students have set a new enrollment level. Those 3,250 individuals make up a total of 3,210 FTE (full-time equivalency). The fact that there's only a 40-student difference between these two figures means a greater percentage of Greeners are full-time students. Last year the differential between total students (head count) and FTE was 100, the year before it was 147-219 the year before. "Eighty-nine percent of our student body is attending full-time" says **Steve Hunter**, '79, director of institutional research. "That figure represents a healthy trend for the college." Another healthy indicator is the record number of students of color (353) who enrolled at Evergreen this fall. That figure represents a 25 percent jump from last year, and a 45 percent increase over the last 10 years. "This year's percentage of students of color matches our all-time high of 11 percent," says Hunter. "We see this increase as another positive step toward a multicultural campus." Other fall figures: students under 22 years of age—51 percent, over 30—30 percent; 1331 new students; graduate students—160; 2,792 Washington residents, 458 nonresidents; average credit load—14.6, and finally, campus clock towers—one.

Booting and Building

While Geoduck booters hone their soccer skills on the campus playfield, construction workers raise the new **Campus Recreation Center Phase II Building**, which will include a 1400-seat gymnasium, Wellness Lab, multipurpose studios and increased office space. The building is scheduled for completion in June, 1989. Get your green shoelaces ready! Meanwhile, Evergreen's men's and women's soccer squads have been ready and willing all season. "Resurgence" is how Women's Coach **David Brown** describes his squad. He's excited about the rebuilding process underway with a very promising core of freshmen, including several former all-conference and all-state high school players. Season highlights include a 1-1 hang-tough tie with the powerhouse Huskies of the University of Washington. Name recognition for the booting Geoducks got a boost this fall when the men's team was ranked 12th in the country by the NAIA. It was the first time since the introduction of soccer in 1979 that an Evergreen team has made it into the national rankings. The Geoduck men got as far as the first game of the NAIA playoffs, which they dropped to Simon Fraser on November 5, 1-0. Much of this year's success is attributed to a potent offense that complements the solid defense which has been a trademark of Coach **Arno Zoske** since he began coaching here six years ago. "Before, we tried to shut people out and hope we'd get a goal somehow," said Zoske. "This year we've worked a lot on transition, getting from a defensive mode to an offensive mode." And the work has paid off. As the *ReView* went to press, the Geoducks have outscored opponents 42-19 this season, while enjoying an 11-2-4 season. The bottom line for Zoske, however, is not victories or national rankings but personal growth and motivation. "The single most important goal for our program is to remain focused on the individual student athlete's appreciation of good, solid teamwork, and the development of his or her own pursuit of excellence."

"Indeed, Greeners were more fervent in praising their education than students at any other institution profiled in this book."

So writes Martin Nemko in his newly published book, *How To Get An Ivy League Education At A State University*. The college, one of 115 selected for inclusion by Nemko, receives a seven-page description in his book. He also writes that Evergreen students' "contributions in class often constitute the very substance of the inquiry, not mere footnotes to lectures."

Summer School for Teachers

Over 130 Washington high school and middle school teachers received some invaluable revitalization this summer at Evergreen. That's where The National Faculty of Humanities, Arts and Sciences, a non-profit organization whose purpose is to improve the quality of teaching in the nation's classrooms, hosted its second and third summer institutes for secondary teachers. Faculty Member **Rudy Martin**, who co-directs Evergreen's office for the Northwest Region of the National Faculty with **Karen Munro**, reports that participating teachers were enriched and exhilarated by their experiences. History and social studies teachers professed to being "rekindled" by lectures such as those given by Professor Emeritus **Mary Land** of Washington State University, and Evergreen Faculty Members **Stephanie Coontz** and **Tom Rainey**, while science and math teachers viewed Mt. St. Helens with college professors, including Evergreen Faculty Member **Pete Sinclair**.



Ingram Honored

Evergreen's first Faculty Emeritus, **Wini Ingram** (left) was honored by close colleagues and former students this fall. In this photo by Provost staff member **Sue Hirst**, Faculty Member **Earle McNeil** presents a plaque he made for Wini out of exotic Brazilian and African woods. The design, which Ingram helped design, represents a mask and a lily. The plaque, she reports, will greet visitors at the entrance to her garden. The celebration was the first in a planned series of tributes to Evergreen faculty. The Provost's Office has also established an Emeritus Faculty Scholarship Fund. For more details about the scholarship, contact Evergreen's Development Office, Library 3114.

New Division, Old Friend.



Winkley since 1985, was named to the new post this fall, following the departure of former Vice President of Development and Administrative Services **Sue Washburn**. The college is currently seeking to fill another new vice president position for College Advancement, which will include the areas of Development, Information Services and Community and Alumni Relations. See story page 10.

The leaves keep falling and the students keep coming. Over 1,300 new Evergreeners have pushed Fall enrollment past the record-breaking 3,200 mark, providing plenty of business for Evergreen's faculty and staff. Thankfully, someone foresaw the rush and hired 17 new faculty members, 14 of whom are either people of color or have multicultural experience, and three who are Greener grads (see Alum News, pages six and seven).

Not only are there a lot of us, but we learned recently from researchers from Stanford and the University of Arizona that we're happier than most (see story at right). Speaking of happy, Greeners are in the pink as they watch the long awaited College Recreation Center II and Lab Annex arise. Meanwhile, Geoduck computer heads are all aglow with their acquisition of 18 dazzlingly state-of-the-art Macintosh computers. Good news doesn't stop at the doors, either. Out on the soccer fields, Geoduck booters are celebrating their first-ever national ranking and NAIA playoff competition.

Evergreen graduates are also strutting their stuff out in the workplace as evidenced by a five percent increase in this year's overall placement figures and schoolteachers from Spokane to Sequim are sizzling with inspiration from two National Faculty institutes that were held by Evergreeners on campus this summer.

But, wait, what are those weird and wonderful sounds coming from Red Square? Don't worry—be happy! It's the BOOM BOX BOOGIE! Better check it out along with the other happenings below and throughout this, the latest edition of your Evergreen ReView.

Red Square Rocks Out

It took some last-minute scrambling and the recruitment of a couple of car stereos (with cars), but the much-heralded Boom Box Boogie delighted Red Square denizens at noon on Friday, October 21. Otherwise known as "Jon Appleton's High-Impact Workout," the event began when 15 students holding tape recorders hit "play" at the same time. Each boom box played a different tape, all part of the same composition recorded in New York on the new wonder of the electronic age, the synclavier. Meanwhile Appleton led over

50 Greeners in a lively set of exercises set to the music.

Appleton, a Dartmouth professor, was on campus for the National Conference of the Society for Electro-Acoustic Music in the United States (SEAMUS). Coordinated by Evergreen Faculty Musician Andrew Buchman '77, the three-day conference brought together the leading lights of the electro-acoustic music scene, not to mention a video appearance by Mr. Fender Guitar himself, Les Paul.

Why

The question posed in this headline on the front

Are

page of the October 6 *Olympian*, is not an idle

Evergreeners

one. In fact, it's part of an extensive nationwide

So Happy?

study, funded by a \$180,000 Lily Endowment

Educators

grant, to identify campus environments rich in

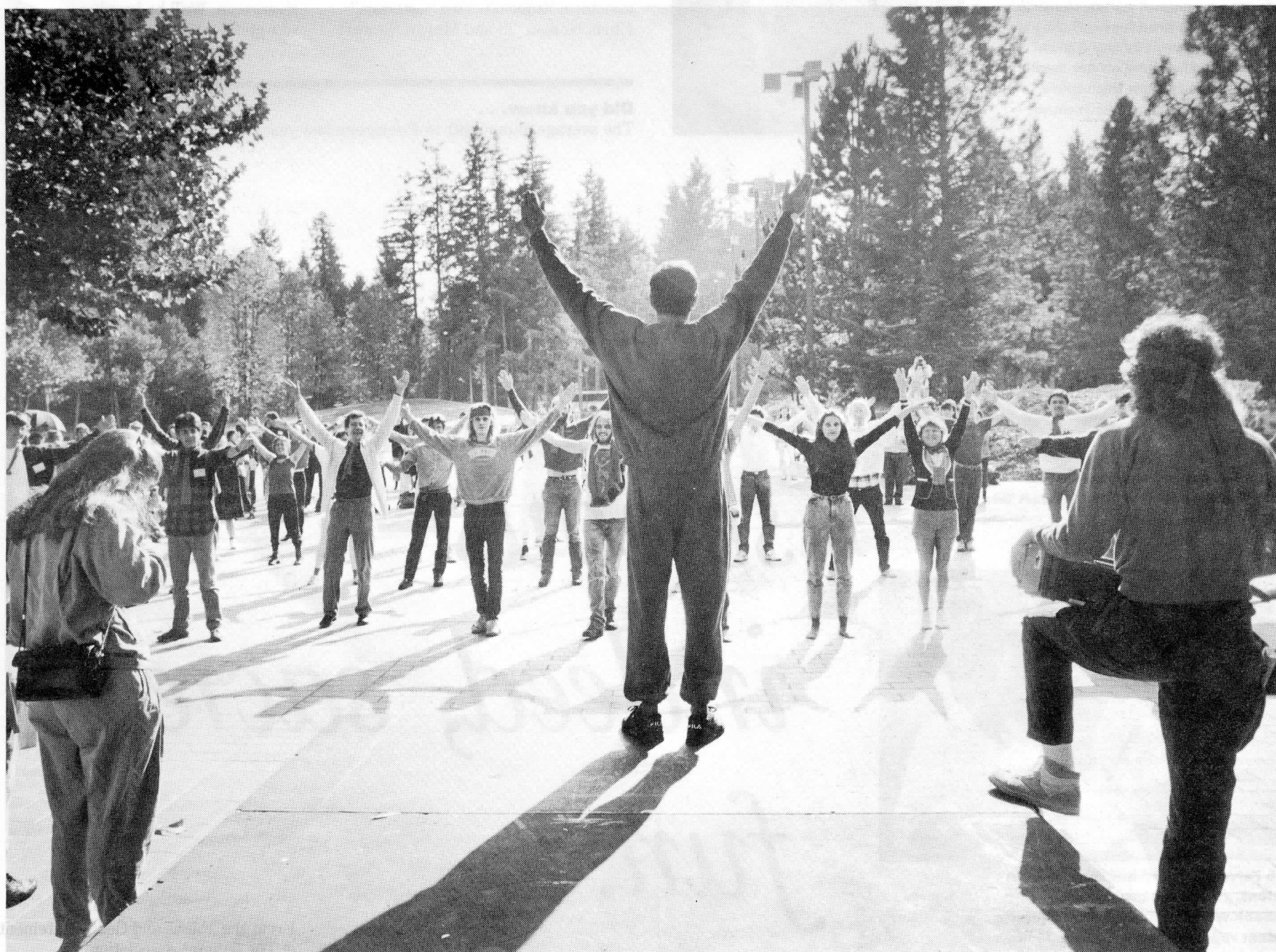
Want

out-of-class experiences.

To Know

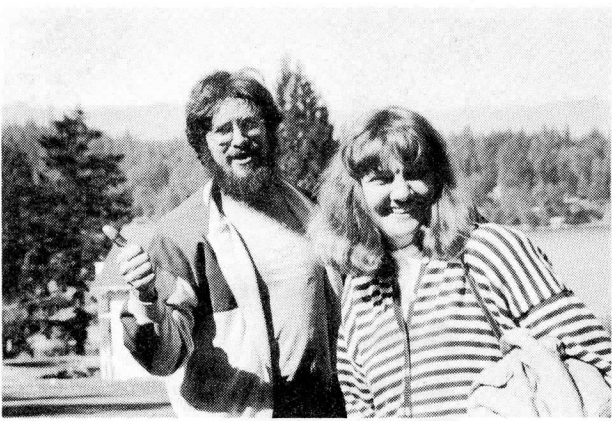
The *Olympian* reported more than 60 college presidents and higher education experts were asked to nominate colleges that gave students high-quality, out-of-class experiences. The list was narrowed to 13, with Evergreen being the only Washington college. Researchers James Lyon, dean of student affairs at Stanford University, and Rosalind Andreas from the University of Arizona visited campus last month to find out more. They interviewed over 70 students, faculty members, alumni and administrators about the college's atmosphere.

"What we're really hearing," said Lyons during his visit, "is an extraordinary commitment and excitement about learning. 'Really first-rate places like Evergreen don't cut up students' time into fun hours and study hours.' He also cited the faith faculty have in students that 'tends to free students from the fear of failure,' collaborative learning, and program structure. Lyons reports a real lack of traditional collegiate partying, stating, '...their education is permeating their lifestyle.'"

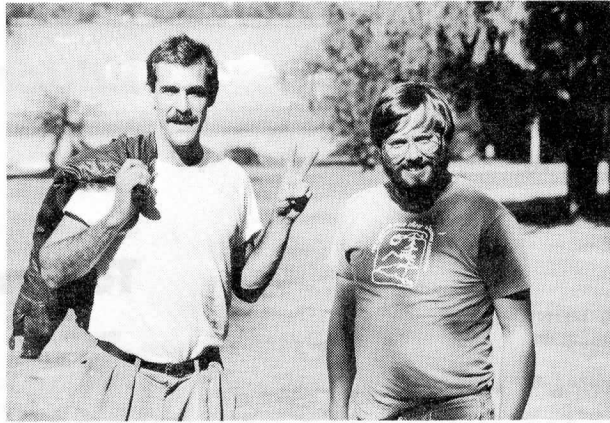


Seabeck Scrapbook

October 1 and 2, 1988
Photos by Chris Nelson '79



Jon Epstein '81, a.k.a. Eppo, and Alumni Association President Val Thorson '75.



Stuart Smith '83 and Board Secretary Ray Fowler '83.



Okay, this photo wasn't snapped at Seabeck, even though its subject Kate Crowe '77, was there. Crowe is seen here in the guise of Dr. Root (a spin-off of cablevision's own Dr. Ruth) as she gives a safe-sex pep talk to new students on campus during the Orientation Week ice cream social that is annually sponsored by the Alumni Association. She drew on her family background to lighten the topic's seriousness with a heavy German accent.

Ten Thousand Strong and Smart

by Val Thorson '75
Alumni Association President

Evergreen's Alumni Association Board met October 1-2 at Seabeck Resort on Hood Canal. We felt it was an especially fruitful gathering because the seeds of our efforts were planted months before.

In the Spring *ReView*, we shared our hopes and visions for an Alumni Association that responds to the needs of Evergreen grads by inviting you to answer some questions:

How can we involve more alumni in the Association and its activities?

How do we obtain the resources we need to survive and be healthy?

How do we become more visible—to the public, as well as to alumni?

How can we have influence upon college issues that matter to alumni?

By asking these questions, we hoped to inspire people to come forward, join the Association board, and develop answers.

Our invitation worked. The June election for new board members generated more interest than any other in the Association's history. For the first time ever, there were more people wanting to join the board than there were spaces. The Association found itself with a terrific new board of energetic, creative, and *fun* people.

Among those on the new board are some old hands, who were either re-elected in June or who are finishing up a two-year term. They include Patricia Bliss '80, Ray Fowler '83, Elena Guilfoil '80, Charlie Heffernann '75, Gary Hirsch '84, Doug Riddels '85, Val Thorson '75, Myrna Zolyomi '82, and John Zupa '77. Two "veterans," Chris Nelson '79 and Margo Stewart

'80, have returned after being away from the board for a few years. Also joining us again this year is Student Representative Jacinta McKoy.

New members are Casey Bakker '77, Kate Crowe '77, John (Eppo) Epstein '81, Barb Felver '88, Jimmy Mateson '84, Brendan MaFarland '84, Kitty Parker '76, Stuart Smith '83, Giskin Southall '88, Andrew Stewart '84 and Janine Thome '87.

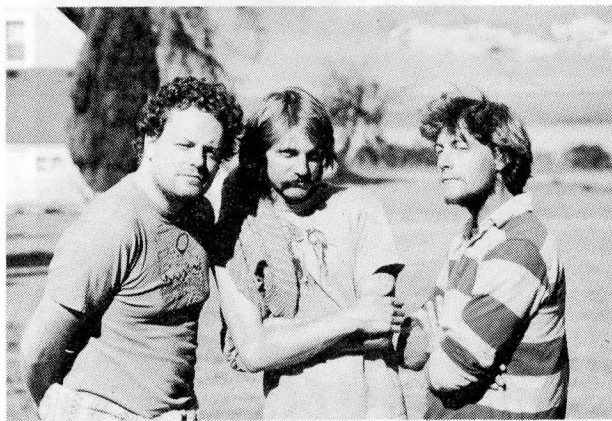
Together, we represent every era in Evergreen's history, and we bring many "Life After Evergreen" perspectives to the board, working as freelance writers, media wizards, mushroom farmers, parents, financial planners, accountants, graduate students, Evergreen staffers, and assorted entrepreneurs and consultants.

In all the time I've been a part of the Association, I have never seen this much ability, willingness to work, humor and constructive questioning. As our program planner, Jimmy Mateson, mentions in his column below, the ranks of Evergreen alumni will swell to 10,000 this spring. This excites me even more than working with the wonderful people on our board because—in your behalf and with your help—we are *all* moving toward making the Alumni Association a powerful asset to the Evergreen community.

It would be easy to go on, but my time's up, and we'll have plenty of opportunities to talk throughout the year. Join us as we sponsor dances, receptions, and other special events, or call or write care of the Alumni Office at Evergreen. We'll be keeping in touch—so watch for us!

Did you know . . .

The average alumni gift to Evergreen last year increased seven percent?



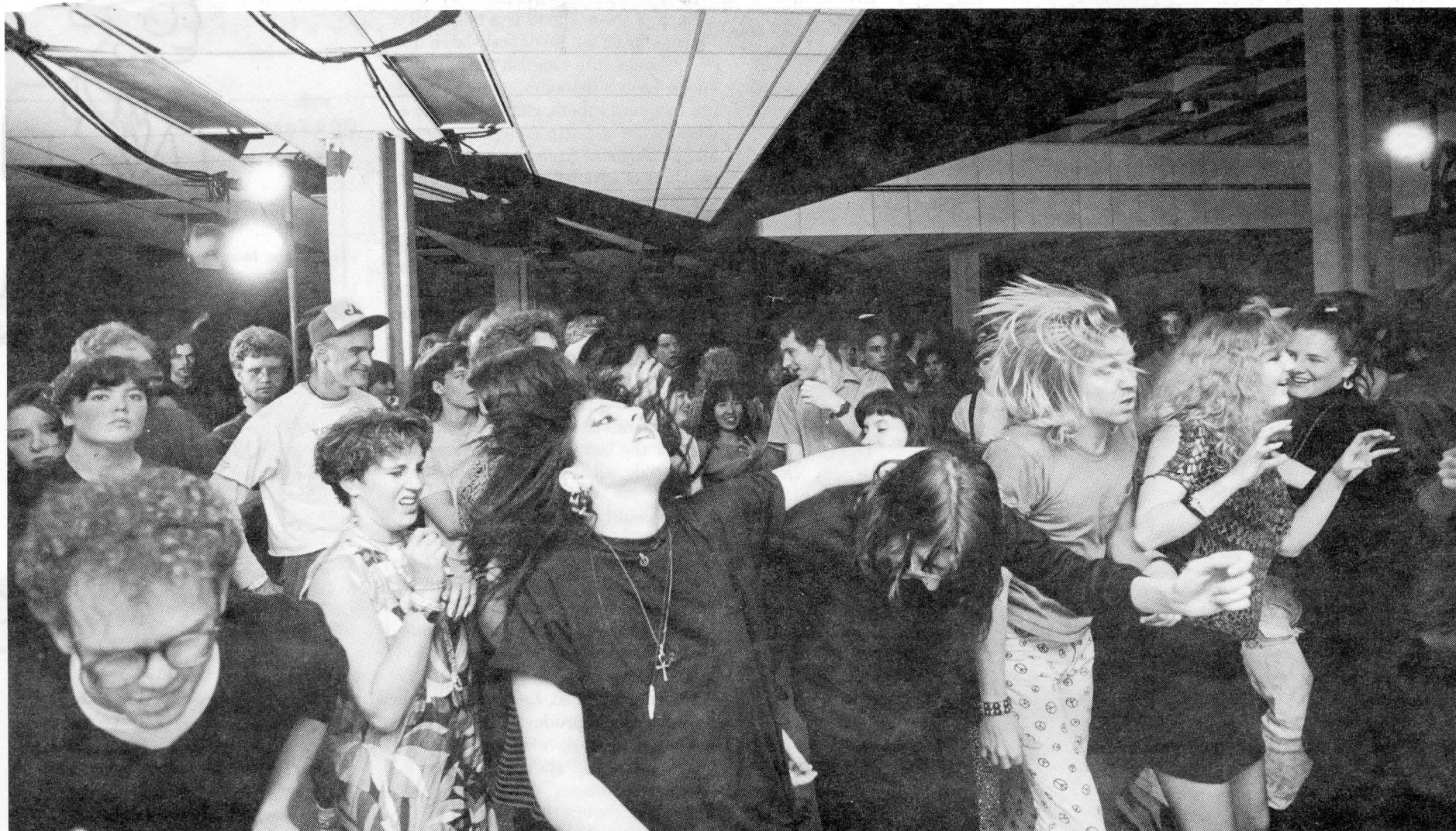
Brothers in arms: Doug Riddels '85, Jimmy Mateson '84 and Andy Stewart '84.



Barb Felver, '88 grad and current MPA student, strolls the grounds of Seabeck with the Alumni Association's student representative Jacinta McKoy.

*Have
serious—
indeed, sacred—
fun.*

From the Values and Goals Statement of The Alumni Association.



The Gig Commission Lives!

N D J F M A M J

Originally a promotional wing of Student Activities (in the early- and mid-1980s), the Gig Commission has been resurrected by the Alumni Association Board to plan and deliver a series of events for your Evergreen calendar. As noted, some of these occasions have yet to be firmed up, but things will be happening this year. As **Kate Crowe '77** and **Kitty Parker '76**, both Evergreen staffers and co-secretaries of the board who composed this calendar, profess: "Let's rock this place!"

Through November
Peoples of Washington Exhibit, Gallery 2, Library, TESC campus
Of interest to all

Saturday November 19
Alumni Association Fall Board Meeting 9:30 a.m., Organic Farm House, TESC campus
All alumni welcome

Tuesday November 22
Claudia Schmidt and John Gorka in concert, 8 p.m., Recital Hall, Communications Building, TESC campus
Campus and community invited

Thursday December 8
Eric Tingstad and Nancy Rumbel perform live, 8 p.m., Recital Hall, Communications Building, TESC campus
Community and campus invited

Monday December 12
MPA and MES Graduate Programs Reception hosted by President **Joe Olander**, 7:30 p.m., Library 4300, TESC campus
All grad students, faculty and alumni welcome

Tentative!
Saturday January 21
End of the World Ball—a big bash to honor America's new president
Time and place to be announced
An official Gig Commission event
Come one, come all

Tentative!
Saturday February 11
Valentine's Day Dance
In Seattle—time and place to be announced
Sponsored by the Gig Commission
For Seattle-area alums and their pals

Seattle Regional Reception
Late Winter—TBA
New Seattle location
Watch for notices

Tentative!
Alumni Association Winter Board Meeting
Look for an announcement about time, date and place or call your Alumni Office, 866-6000, ext. 6192
All alumni welcome

Regional Receptions!
Possible locations: San Francisco; Los Angeles; New York; Washington, D.C.; Boston; Chicago and Portland.
Watch your mail!

Regional Receptions continue...
Tentative!
Saturday April 1
April Fool's Dance
Time and place to be announced
A Gig Commission gig
Open to campus and community

Get ready for Super Saturday!
Tentative!
Alumni Association Spring Board Meeting
Look for an announcement about time, date and place, or call your Alumni Office, 866-6000, ext. 6192
All alumni welcome

June 3 Super Saturday!
11 a.m.—7 p.m., TESC campus
Alumni activities include:
► breakfast
► election of Alumni Association officers
► afternoon reception
► dance til midnight
Come one, come all

Sunday June 4
Commencement, 1 p.m., New Campus Recreation Auditorium
A special invitation to alums



Official Gig Commission Logo by Bilbo '80

Crank It Up!

by Jimmy Mateson '84
Alumni Association Vice President

This spring Evergreen will have 10,000 graduates. Does that knock you out like it does me? Next question: What good does that figure do?

Individually, lots of good, thank you. Imagine the Greeners out there inoculating communities, businesses and organizations with pernicious substances such as "group process," "facilitation," and the perpetual question of "why?"

But collectively, the question turns to "What good *could* our five-figure number do?" It's one thing for us to have an Alumni Association, and quite another to empower that group as a

working body, to use it to its potential. Reminds me of having a nice car that needs gas and oil. We are the gas in the tank—the board volunteers. But you can't fire up the engine without oil—it'll burn up.

Cash greases the gears. Yep, even at Evergreen. The last time the Association asked for money it was in the form of membership dues. That flopped—we got only 200 members. Once we dropped the fees, our membership soared to its present height of 9,600.

Roughly, operating budget is \$10,000 a year. For an Association of almost

10,000 people, I think it's a piddly budget. If, however, we acknowledged that we wanted to work collaboratively, we could multiply the funding level, and put ourselves to work on projects of international scope—drawing on the collective experience and contacts of 10,000 Greeners!

Folks on the board are working hard. But can we work smart? For instance, would you rather be part of serving chicken for five days, or put that energy into, say, an international communications conference hosted at Evergreen? That's not to rule out chicken, but with your participation,

we can do more globally ambitious things as well.

I'd like to ask you for some oil for this engine. Just as important would be gas—and don't forget we need maps, too. What are the things you'd like to see the Alumni Association do? Directions we should take? What things can you help facilitate? We'll be continuing this discussion on these pages, but it won't be a dialogue until you join in. Jump in the car along with myself and the AA board, and let's go for it. Whether this metaphorical beast is a Ferrari or a Volkswagen bug, the time's right to crank it up!



Levy

Play Mestizaje For Me

Who says you can't get warm with a radio? Only those who haven't heard **Lisa Levy's** show on KAOS 89.3. Her personable voice, full of Latino rhythm, is as warm as a Spanish drink on a cold night. It's a voice that makes you stop and look at the radio: professional but friendly, as if she's talking just to you, sharing her excitement about Latino music and culture.

Levy '86 is much more than a disc jockey, however. A native of Quito, Ecuador, she earned her wings seven years ago on the airwaves of Evergreen's community radio station, KAOS 89.3-FM. Since then, she's evolved into a consummate commentator on Latin American music and news, and a relentless believer in the entertainment and educational value of intercultural programming.

"Unlike the colonizers of the United States, the Spanish conquered Central and South America while mixing freely with the indigenous peoples," says Levy. "Latin America underwent

mestizaje, a process of combining peoples, styles and personalities. Its music also underwent *mestizaje*. Today, you can hear the general history of the whole continent in the music."

"Mestizaje" (pronounced *mess-tee-zah-hay*) is just what Levy delivers to listeners over three Northwest FM stations:

- ▶ She continues to play the best of Latin American folk music on KAOS Wednesday evenings, 7-9 p.m.
- ▶ Three years ago, she began driving to KBCS 91.3 at Bellevue Community College on Monday nights to do "The Voice and Expression of Latin America," a 9-10:30 p.m. variety of music, live interviews, literary readings and guest announcers.
- ▶ In September, Levy added a new skill to her repertoire when she took over a mixed-format program at NPR affiliate KUOW 94.4. Aired from 6-7:30 p.m. on Sundays, the show features music and an hour of news Levy distills from Latino satellite sources.

Each of these shows is a bilingual tour-de-force, for Levy translates many of the songs into English for her audiences. Levy's listeners, many of whom are frequent callers, clamor to hear a wide range of Latin American songs and performers from the indigenous rhythms of groups like Quilapayun to the studio perfection of artists such as Ruben Blades.

"Latin American music is full of contrasts at every step—the rhythm, beat, lyrics, instruments," she says. "Variety is the name of the game. Even within the same country, song expression varies drastically between the highlands or the lowlands, the city or the country, from the north of the continent or from the south, from this century or the last. Political borders have little to do with the way the music sounds.

"You could say that what I do is give listeners information through interdisciplinary media," Levy says. "I play a huge range of Latino music, but I put each piece in its historical, geographical, anthropological and ethnic context. I want to give my audience a global perspective."

In order to do so, Levy has branched out as a media producer, grants writer and curriculum developer in recent years. Currently, she's working on "Mirrored Images," a multi-media project which covers the relationship between the music and history of her native continent. Like the Latin American music and history that is its subject, "Mirrored Images" is all over the map in the possible forms it could take:

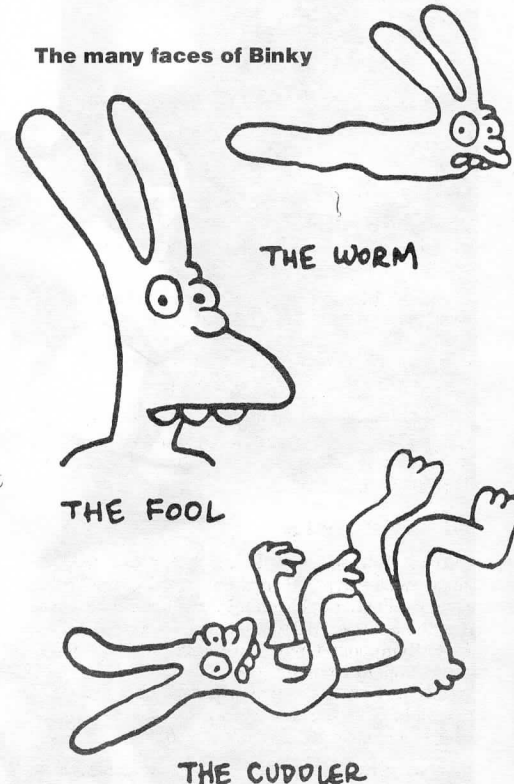
- ▶ An educational video series for use in middle schools across the country
- ▶ A four-part radio series for public and community radio stations
- ▶ A television program that, if funded, would air on public television and provide the basis for the educational videos
- ▶ A summer institute for middle and high school teachers at Evergreen which would focus on the cultural history of Latin America
- ▶ A college course for television

"Today's Latin American folk music is a mixture of indigenous American, Spanish and African derivations—all components of the historical process," says Levy. "What makes music a good tool to understand Latin America is that the concrete details of history are right there coming out of the speakers. The music makes it so much fun to learn."

And fun to play and listen. Next time you're listening to one of Lisa's weekly broadcasts, just give her a call and say, "Play *mestizaje* for me."



The many faces of Binky



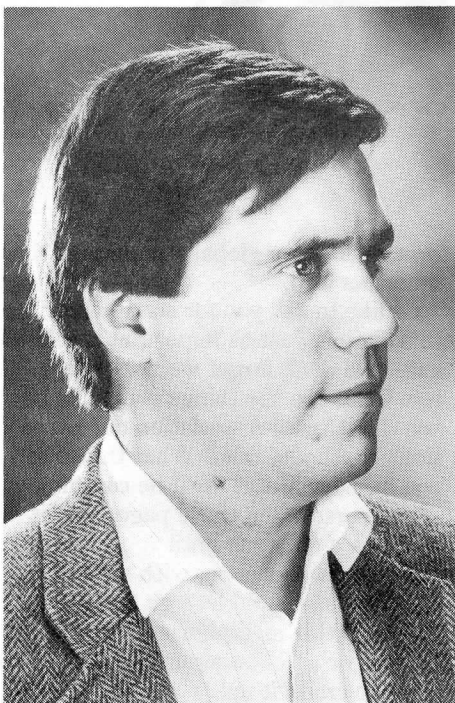
THE FOOL

THE CUDDLER

Binky Whiz Rolls in the Stone

Pointing out that his name rhymes with *braining*, and describing his cartoons as "caustic," his alma mater as "progressive," and the artist himself as "the kind of guy who reads the fine print and is not afraid of confrontations," the September 22 *Rolling Stone* profiled **Matt Groening** '77. After graduation, Groening moved to Los Angeles and experienced the entry-level miasma which still provides grist for his now-famous cartoon strip, "Life in Hell." Said strip debuted in *The L.A. Reader* in 1978 and is presently syndicated in more than 70 publications. Along with his wife, Deborah Caplan (they were married in 1985), Groening is now the driving force of Life in Hell, Inc., creating "calendars, greeting cards, T-shirts and coffee mugs," and, beginning last year, a regular animation spot on Fox television's *Tracey Ullman Show*. For a full copy of Tish Hamilton's long and lively article, check your local "progressive" library, or write STONE/GROENING, Library 3122, The Evergreen State College, Olympia, Washington 98505.

Hurlburt



Hurlburt Comes Full Circle

Neal Hurlburt '77 closed an academic, as well as geographical, loop when he came back to Evergreen this fall. By hiring on to teach "Physical Systems," the college's option for advanced physics students, he not only returned to his alma mater, but to the very program in which he began his career as a scholar.

Now a recognized expert in astrophysical research, Hurlburt had just transferred to Evergreen in 1976—thirteen years ago this spring—when he signed up for the first-time-ever offering of "Physical Systems," taught by Faculty Member **Sig Kutter**.

From that auspicious beginning, Hurlburt went on to study indepen-

dently with Faculty Member **Rob Knapp**, and then set his sights on a doctorate at the University of Colorado in Boulder. That led to a fellowship at Cambridge University in England in 1985, and a lecture tour of western Europe, which in turn led back to Boulder in 1986. There he taught in the graduate program and used the National Science Foundation's nationally-linked supercomputer to do more research on the subject of his doctoral thesis, planetary and stellar convection, or the patterns made by heat and cold on Earth, for instance, or the sun.

What goes around, comes around. Hurlburt recalls that he was admitted

to the doctoral program at Colorado primarily on the basis of high GRE scores—he thought. He later learned the department had never received his GREs, and that he, in fact, had been admitted to the rigorous and competitive program purely on the strength of his undergraduate records, including an Evergreen transcript composed largely of his self evaluations and faculty evaluations by Kutter and Knapp.

Class of 1973

Lindsley Cross, Wilton, ME, is the director of Social Service at Franklin Memorial Hospital in Farmington. She would like to hear from Vicki Landers, wherever she may be!

Roger Goldingay, Malibu, CA, and his wife, Dr. Carol Otis, have written a book entitled, "Campus Health Guide," which will be published by the College Board in March, 1989.

C. Allan Hart passed away in June of this year. Allan last worked as a staff member of the International Trade Institute at Portland State University where he served as coordinator of the state-wide Field Study Program. The family suggests remembrances be given to radio station KMHD at Mt. Hood Community College in Gresham, Catlin Gabel School or The Evergreen State College.

Class of 1974

Charles Nishida, Mercer Island, WA, was promoted in April to AV/Video Production Coordinator for Puget Power.

Thom Lufkin, Olympia, WA, earned his M.P.A. from The Evergreen State College in 1984 and now works for the Dept. of Ecology as an Environmental Planner supervising the Underground Storage Tank Project.

Terry Bonyng and **David Smullin** ('75), Arden Hills, MN, are the proud parents of Emily Aurora Smullin, born May 30, 1988. Emily joins brother Josh, 6 years.

Class of 1975

Patricia Lott Meesen, Bellevue, WA, an opera singer who has performed with the Seattle, Eugene, Portland, Tacoma-Pierce County Operas, and the Seattle, Oregon, Central Oregon, and Mesa Symphony Orchestras, began her own one-woman opera company, Cameo Opera. Cameo Opera performed for more than a dozen schools and clubs both in the Northwest and in Arizona over the winter.

Gary Lorentzen, Seattle, WA, has taught high school social studies and German for the last ten years, the last eight at Edmonds High School. He is currently working towards his doctorate in Germanics at the University of Washington.

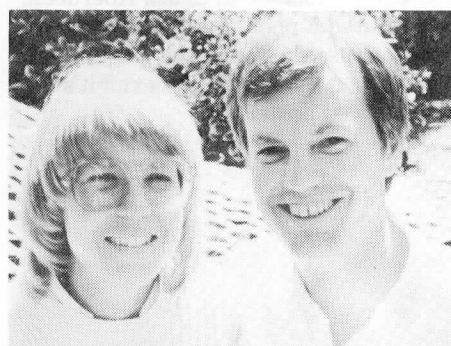
Steven Lange passed away in June as a result of drowning due to an automobile accident. Steven received his law degree from the University of North Dakota and opened a private law practice in Seattle in 1984. He and his family moved to Olympia in 1987. He used "an old country lawyer approach," often bartering with clients in lieu of cash. About a third of his practice was devoted to battered women and sexually abused children. His contributions to the Olympia community will be missed.

Stan Marshburn, Olympia, WA, left Evergreen in June after five-and-a-half years as assistant to the president for governmental relations, and immediately launched into a new venture in his position as assistant director for policy in the Office of Financial Management for Washington state.

Class of 1976

Joseph Dear and **Leslie Owen** ('77), Olympia, WA, are the proud parents of Benjamin Owen Dear, born April 29, 1988.

Jan (Burnham) Dunlop and her husband, Dave, have been married eight years and live in the Richmond hills overlooking San Francisco Bay. She's a teacher, he's a postal employee, and the two of them are seeking an independent adoption. Jan points out that this way of adopting a baby is perfectly legal and presently accounts for 80 percent of California's adoptions. While many agency adoptions take five years or longer, independent adoptions average closer to one year. Working with an independent adoption center, Jan and Dave have sent out letters describing themselves and are generally spreading the word as far as they can. They ask that any information or questions be directed to their adoption counselor at (415) 944-4744, or to their home at 1507 Aqua Vista Road, Richmond, CA, 94805.



The Dunlops

Laurie Jones, Minneapolis, MN, has been with the Minneapolis Park System as a groundskeeper for seven years. After trips to the Grand Canyon and Canyonlands in the summer of '87, she headed for Calgary and Banff this past summer.

Greg Irwin and **Vickie Phelps**, Tucson, AZ, plan to relocate near Grand Junction, CO, and start a new venture in tissue culture asparagus farming. All Greeners interested in helping an asparagus farm get off the ground—call Greg and Vickie!

Beverlee Bowman Price, Edmonds, WA, left her job as associate editor on a Seattle magazine to go back to school for a nursing degree. She is enrolled in Shoreline Community College's nursing program and after completion, hopes to get a master's at the University of Washington.

Anne Pflug, Bothell, WA, began her duties as Bothells' city manager in June 1988. Prior to taking this position, Anne was the finance director for the city of Springfield, Oregon, the assistant to the city manager in Bellevue, WA, and the chief administrative officer for Poulsbo, WA.

Frank Greif, Seattle, WA, has been named vice president of Wright Runstad and Company, one of the region's largest commercial real estate developers. Frank joined the company in 1983 as founder and general manager of WRC Telecommunications, an affiliate formed to provide telecommunications services to tenants in the company's commercial office properties. He is currently involved in marketing the company's downtown Seattle projects.

Class of 1977

Jo Feldman, San Francisco, CA, changed her name to Jo Falcon and married William Spears on November 1, 1987.

Peggy Gallaher, Wellesley, MA, received a Ph.D. from the University of Texas this past summer and will teach personality psychology at Wellesley College during the 1988-89 academic year.

Neal Hurlburt, Olympia, WA, is teaching "Physical Systems" at Evergreen this year. See story on facing page.

John McLaughlin, Telluride, CO, received an M.A. from St. John's College in August. After two years of work, he has completed illustrations for the book *Going the Distance*. John asks if there are any fellow "pin-heads," telemark skiers in the San Juans?

Diane Vosick, McLean, VA, completed a masters in arts in geography at the University of Minnesota in April. She is married with three children and works part time for Resource Management Consultants, Inc. in Washington, D.C., in the areas of land use and agriculture.

Class of 1978

Kathy Clark, Portland, OR, a recent recipient of a National Endowment for the Arts Interdisciplinary Arts Grant, is recovering after eight years of performance art with the group, The Girl Artists. She works as a public relations coordinator for The Oregon Art Institute's Northwest Film and Video Center.

Ellen Pickell, Hoquiam, WA, announced June 9 that she would seek the state Senate seat held by incumbent Sen. Paul Conner, (D) Sequim, for the past 31 years. Ellen and her husband own and operate logging and construction companies in rural Grays Harbor County and a music studio in Hoquiam.

Don Whiting, Olympia, WA, state director of elections since 1974, was appointed assistant secretary of state for the state of Washington by Secretary of State Ralph Munro in June.

Marge Brown, Olympia, WA, an employee of the college since 1979 and now working in Photo Services, is teaching the "Hand in Hand" program at Evergreen this fall.

Kim Schaefer-Schnittger, Watsonville, CA, works in a local elementary school. She spends her free time with her husband and two boys, Aaron, 5 years, and Maxwell, 4 years; 2 horses; dogs; cats and assorted critters. Kim is currently working on her primary teaching credential through Chapman College.

Marc DeLaunay, Seattle, WA, is the senior vice president and head of public relations at Elgin Syferd, Seattle's third-largest advertising and publicity firm.

Anne Stone, Chapel Hill, NC, is a senior research technician at Duke University in the division of cardiology.

Petrina Walker, Olympia, WA, is working on an oral history, photo essay book about the nuclear arms race. Petrina married a man from Spain a year and a half ago.

Class of 1979

Mea Alexander Moore, Khartoum, Sudan, East Africa. After moving to the Sudan with husband, Cliff, Mea taught sixth grade and worked with Ethiopian refugees. She attended the School for International Training in Brattleboro, VT, last year where she completed coursework for a Master of Arts in Teaching English as a Foreign Language. She is back in the Sudan working on her thesis which concerns a culture and orientation project for Ethiopian refugees who have been accepted for resettlement in the United States.

John Petrich, Arlington, MA, completed his M.P.A. degree at Harvard's Kennedy School of Government in June.

Julie Grant, Olympia, WA. Julie has hired three professional counselors who are all Evergreen grads to work with her at her rehabilitation counseling service, Grant and Associates. Julie's daughter, Kendall, is now an Evergreen student.

Sutapa Basu, Seattle, WA, is the director of women's programs at Bellevue Community College. Previously, she was the head of women's programs at North Seattle Community College.

Michael Price, Urbana, IL, is working toward an M.D./Ph.D. at the University of Illinois.

Louise Williams, Olympia, WA, is teaching "Studio Project" at Evergreen this fall.

David Schneider, Selah, WA, is the coordinator of the DWI Safety Belt Taskforce of the Yakima Valley Conference of Governments.

Allison Duryee, Falls Church, VA, received a masters in Public Administration from the University of Southern California and now works as a biologist with the Environmental Protection Agency in Washington, D.C. She and Richard Martin were married in 1986 and are the parents of newborn son, Alex, born three months premature. Alex is critically ill and Allison would appreciate hearing from her Greener friends. Her address is 3401 Radnor Place, Falls Church, VA 22042, (703) 241-4049.

Class of 1980

Raymond Lee, Seattle, WA, works in User Education at MicroSoft.

Myles Mustoe, East Wenatchee, WA, earned Fourth place in the Novelty/Miscellaneous Category of the Professional Song Division for the second consecutive year in the eighth annual Music City Song Festival in Nashville, TN. His winning song is entitled, "A Wooden Frog for Christmas." Myles is an adjunct professor at Central Washington University where he earned his master's degree in education in 1987.

Marilyn Sturdevant, Portland, OR, received her master's in social work from Portland State University in 1987 and now works at a hospice house.

Sherry (Smith) Falkner-Rose, Mountain View, CA, has been developing her career in human resources with the ROLM Systems Division of IBM since 1984. Sherry writes, "The balance of a broad perspective and a focused goal, and the partnership between student and instructor in planning and evaluating quarterly goals, were two extremely valuable tools. Combining those lessons with the discovery at Evergreen that I really could do anything I set my mind to (like understanding science) and the memory of the meditative pace my footsteps traced on the running trail to the beach place my experiences at Evergreen in their true perspective—a critically integral part of who I am today."

Deanna Ray, Seabeck, WA, is in her fifth season as a career seasonal park ranger at Scenic Beach State Park. Deanna was a delegate to the Governor's ICSW Conference from Washington State Parks.

Margaret Millard, Graham, NC, received her teaching certificate from the state of North Carolina and plans to teach fourth grade students in 1989 after her second child is born. She and her husband, Daniel Tolfree, continue to sell organic produce grown on their farm.

Neil Shamberg, head of a two-generation Evergreen family (sons Bruce and Steven Shamberg both graduated in 1982) and dedicated alum who pioneered chicken barbecues to raise funds for the Alumni Association, died this summer. "Neil and his family have always been loyal to the college," comments Larry Stenberg, director of alumni relations. "His many contributions will be missed."

Class of 1981

Noah Poritz, Bozeman, MT. After employment with Glacier National Park and the USDA's Rangeland Insect Lab, Noah has a new position with the USDA's Bio-Control Facility where he continues to work on the biological control of exotic weeds. He received his M.S. in Entomology from Montana State University on the biological control of the week leafy spurge. He is an avid skier and mountain biker. His wife, Leona, is proprietor of a company which markets and distributes beneficial insects which attack exotic weeds. They are the parents of two year old Wesley.

Leon Werdinger, Lajitas, TX. "I would like to thank all of my fellow alumni who donated explosives for my last venture. I'll put the leftovers to a good cause. I'm currently entering a career in publishing. My first project is to produce a bible translated for left-handed people. Who knows what's next?"

Jim Gilfix, Farmington Hills, MI, received his Masters in Social Work from the University of Michigan in 1987 and now works as a social worker in a chemical dependency program.

David Kaplan, Seattle, WA, is an audio manager and buyer for Magnolia HiFi and Video.

Audrey Nickell, Bainbridge Island, WA. Audrey, her husband Eric, and three children have moved back to Washington after several years in Pasadena, CA. They will travel to the Philippines in spring 1989 where they will learn the language and culture of the Samal people and help establish a culturally relevant Christian church.

Matt Perkins, Seattle, WA. For the last seven years, Matt has spent half his life in the wilderness working for Outward Bound. When not in the woods, he worked at temporary jobs in Seattle or traveled. He began law school at the University of Washington this fall.

Class of 1982

Eric Einspruch, Miami, FL, completed his Ph.D. in Educational Research and Evaluation at the University of Miami. He is currently employed in the Office of Institutional Research at Miami-Dade Community College.

John Irwin, Pittsburgh, PA, is attending Pittsburgh Theological Seminary pursuing a Master of Divinity degree in the Presbyterian Church.

Sue Stadler, Boise, ID, has been teaching kindergarten and first grade at the Children's School in Boise, as well as coaching volleyball and soccer and pursuing "outdoorsy stuff" like hiking and biking.

Kim Audette, nowhere specific, has done extensive travelling in the Orient, Europe, the Middle East and the Yucatan. She works as a shaman disguised as a street musician and recently earned a B.S. from Washington State University in microbiology with a minor in zoology.

Class of 1983

Kevin Leavitt, Grants Pass, OR, works at the Paradise Ranch Inn in Grants Pass.

Sarah Cassatt, Seattle, WA, is attending the University of Washington as a graduate student in the Civil Engineering Department studying fresh water quality control.

Andrew Harper, Seattle, WA, has been a first and second-grade teacher at Sacajawea Early Childhood Education Center for three years. Andrew was one of 10 Seattle teachers awarded a crystal apple and a \$2,000 "thank you" in the fourth annual Excellence in Education awards. Andrew uses poetry, writing and humor to teach math and reading, recruits parent volunteers to assist in the classroom and brings in area professionals to work with students.

Shawn Banta, Nashville, TN, and **Erik Haugland** were married June 11, 1988 in Seattle.

Class of 1984

Gary Cantrell and **Mary Bittinger**, Thunderbolt, GA. Gary teaches fifth grade and recently obtained his U.S. Coast Guard Captain's license. Mary is the coordinator of the Expanded Food and Nutrition Education Program in Chatham County and is a faculty member at the University of Georgia Cooperative Extension Service.

Jocelyn (Bucci) and Bob Van Belle, Yosemite, CA. Jocelyn and Bob report, "Since graduation, we've married, signed on with the National Park Service, had our teeth fixed and begun to eat more beef. Bob continues to drink a great deal of coffee, and dreams of the Asterisk often. Jocelyn continues to ruin her good work dresses with premium brand oil paints. Bob reads *Huckleberry Finn* over and over and subscribes to literary quarterlies that he uses to dress up the living room coffee table. We've spent much of our free time flailing our way up steep granite cliffs throughout Baja, the Sierras, and the American Southwest. We live in a small shack beneath some 400 year old oak trees in Yosemite National Park where we work as nickel-and-dime administrative drudges. We are very happy."

Class of 1985

Nan Warshaw, Chicago, IL, works as an office manager and rental agent for a real estate company. She is also the youth arts coordinator for a non-profit youth organization in Evanston, IL, where she is working to create a youth music center.

Catherine McLeod, Aspen, CO, has started a public radio station, KAJX 91.5 FM, Roaring Fork Public Radio. Catherine hopes "everyone voted this month" and reminds you all to "support your local public radio station."

Tom Mueller, Indianapolis, IN, has been hired as an animal trainer/zookeeper at the newly-opened Indianapolis Zoo.

Kent Kleinsasser, Seattle, WA. Kent and wife, Angela, are the proud parents of Sophia Rosa, born May 23, 1988. Kent is employed by Safeco Properties and is enrolled in City University's Master in Public Administration program.

Class of 1986

Douglas Mackey, Tacoma, WA, has been hired by the Tacoma Actor's Guild as the sound designer for the 1988-89 season.

Kurt Batdorf, Monroe, WA, is a reporter for the *Monroe Monitor/Valley News*.

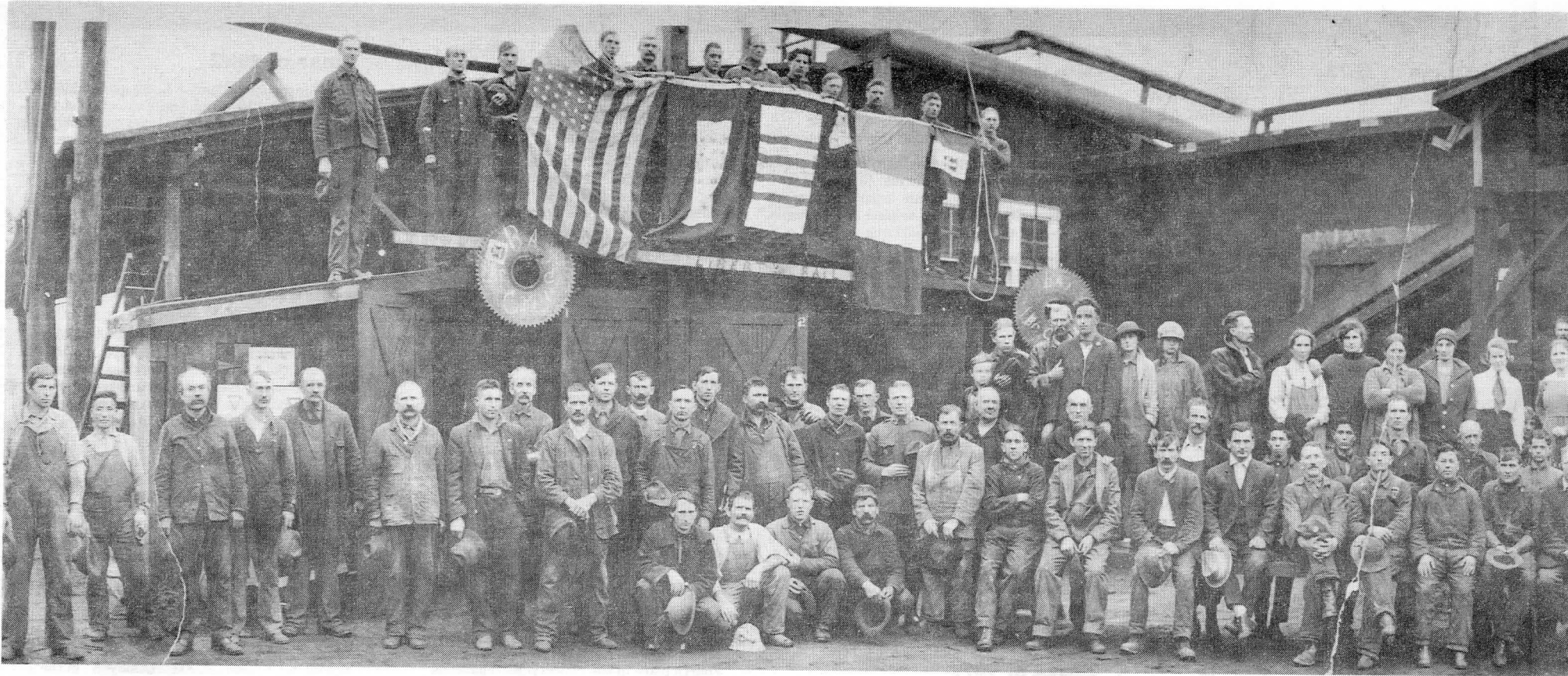
Rachel Vickrey, Albuquerque, NM, received her Master's degree in mathematics from the University of New Mexico and is a math instructor in the Arts & Sciences Division at Albuquerque Technical-Vocational Institute.

Class of 1987

Lawrence Dominguez is serving with the Peace Corps in Liberia, West Africa.

Brian Finley, Osaka, Japan, is teaching English at the Nichibei Eigo Gakkuen school and learning all he can about life in Japan. His goal is to eventually work in a Japanese business.

Larry Faulk, Tacoma, WA, stepped down as chairman of the Washington Pollution Control and Shoreline Hearings boards to enter the race to replace Joe Stortini as Pierce County executive.



Two for the Road—Just two of more than 200 images that will travel the state with the Peoples of Washington exhibit are these photographs of South Aberdeen millworkers (above) and Mexican folk dancers Kathy and Isaac Shultz-Reyes (at right). Economic development and the fact that Washington's peoples come from many places can be seen in the Croatian, East Indian, Filipino, Finnish, French, Japanese, Norwegian and Polish faces gathered in the Aberdeen photo, which was taken at the Bay City Lumber Co. around 1919 and provided for exhibition by Bronco's Liberty Tavern Historical Museum. The Shultz-Reyes photo, which displays just a peek of the thrill and color Washington's cultures can offer each other, was taken during a 1984 performance at Seattle Central Community College.



Sid White leans his chair back against the wall, face squinting into a perplexed smile, as he searches his mind for the point in time when Peoples of Washington was conceived.

"That would go back to about 1980," says White, leaning forward again. "I produced this fantastic exhibit called 'Isaac Shamsud-Din: Public and Personal Work,' presenting the work of a Black mural artist from Portland."

The word "fantastic" reveals White's fascination with cultural diversity. For the Evergreen founding faculty member and director of Exhibit Touring Services, the Shamsud-Din exhibition was the first major manifestation of an enthusiasm that has guided his work the past nine years, culminating with Peoples of Washington.

Such exhibits are not created alone. In the case of the Peoples of Washington exhibit, 21 scholars and museum professionals, representing ethnic communities across the state, provided information and cultural insights. The "Research and Production" team—comprised mostly of Evergreen staff, students and alumni—included a research coordinator, three field researchers, a text editor, graphic designer, office manager and others. Forty-two photographers and five artists are credited. And contacts were made with scores of people who work in the 37 libraries, newspapers, museums and historical societies that contributed photos, art and information. Even Michael Tesia, the proprietor of Bronco's Liberty Tavern Historical Museum in South Aberdeen, contributed a photograph (the same photo across the top of this page) that was ultimately used in the exhibit's promotional poster.

"Our role is not to interpret other cultures. . . Ours is to bring in other people who can do that, giving form to their information."

Washi

*By Mike Wark
Information Specialist*



In the trenches with her husband was Evergreen Faculty Librarian **Pat Matheny-White**, who has balanced White's skills as grant writer, curator and project director on three major projects with her skills in research and documentation. Their combined talents culminate in the Peoples of Washington exhibit, an artful selection and display of myriad images integrated with factual accounts of peoples pictured. The result is a gallery experience that swells with life—a visible diary of Washington people.

"Our role is not to interpret other cultures," says White. "Ours is to bring in other people who can do that, giving form to their information."

Each image and paragraph in Peoples of Washington is the tip of an iceberg-sized chunk of work and piles of information. Not all of that information remains submerged, thanks to extensive archiving.

However, adventures in making an archive from "primary research" are seldom recorded.

"Sometimes our research gets very primary," says Matheny-White. "Once it involved going into Alfonso Cabrera's garage to gather documents on the beginnings of the Chicano Studies Department at the University of Oregon."

After tracing the source of a photograph through several contacts, the trail led to the home of an 84-year-old Croatian woman, Mary Babare Love, in Tacoma, who invited Sid White to investigate her attic for more photographs. There he found a treasure of images that greatly increased the recorded history of the Croatian peoples in this state.

Primary research is akin to sleuthing. You find your information through interviews with people such as ethnic community leaders and elders, buried in the documents of organizations, from posters on walls and in other unusual places. This isn't material you can find in any library, until someone like Matheny-White is done with it. Then you can access it from most libraries through bibliographies or indexes, using interlibrary loan.

"I've developed a huge bibliographic database and an extensive archive for Peoples of Washington, primarily visual, and mostly photographic," says Matheny-White. "There's a lot of interest by teachers in the schools about this kind of information, and for assistance in curriculum development using these materials."

The duo say they couldn't have helped to create Peoples of Washington without the experience gained working with all kinds of people on previous projects. But the roots of Peoples of Washington trace directly to the Isaac Shamsud-Din exhibit.

"Because of that project, we thought how great it would be to write a grant for a similar project featuring a variety of cultures."

The result was the National Endowment for the Humanities funded "Chicano and Latino Artists in the Pacific Northwest" exhibit that toured 1984 through 1985. This project was supplemented by a huge archive, an Evergreen-produced catalog with artists' work and scholarly essays, and two essays co-authored by White and Matheny-White that were published in regional and national publications.

"In 1984 we began thinking about Peoples of Washington," says White.

In 1985 Evergreen helped get the ball rolling by giving White and Matheny-White a grant to help prepare a grant proposal for full-funding.

"There was about a year of intensive grant writing and networking on both our parts," says White. The Evergreen State College Foundation later gave Matheny-White a grant to begin developing the archive.

The combination of grant proposals and scholarly networking won Peoples of Washington a \$70,000 grant from the Washington Centennial Commission in October, 1987, followed by \$19,000 in grants from the Washington Commission for the Humanities.

"Past exhibits dealt with art and culture, but Peoples of Washington deals with people and culture, though art is included. That's a change in the focus of our work, and we felt it was important to get to that," says White.

There is much that's important "to get to" in the Peoples of Washington exhibit. While it was a long road for White, Matheny-White, their Evergreen team and a statewide network of cultural experts, to bring the project to fruition, the historical road traveled by the state's incoming peoples was, and continues to be, a long and winding journey, indeed. Come out to Evergreen's Gallery 4 soon, or any of the exhibit's subsequent stops around the state, and treat yourself to this rich and varied portrait of Washington's cultural heritage.

Peoples on Tour

The museum and gallery version of the Peoples of Washington exhibit is scheduled for display in the following locations during the Centennial year:

November 1988

The Evergreen State College, Olympia
Gallery 4, Library
For hours, call 866-6000, ext. 6062 or ext. 6128

December 1988

Washington State Historical Society,
Tacoma

January 1989

Northlight Gallery, Everett
Community College

February 1989

House of Representatives,
Capitol Campus, Olympia

March 1989

Seattle Central Community College

April 1989

North Central Washington Museum,
Wenatchee

June 1989

Cheney Cowles Memorial Museum,
Spokane

July 1989

Carnegie Arts Center, Walla Walla

August 1989

Yakima Nation Cultural Center,
Toppenish

September 1989

Esvelt Gallery, Columbia Basin
College, Pasco

October 1989

Larson Gallery, Yakima Valley College

November 1989

Columbia Arts Center, Vancouver

The exhibit will be displayed through 1990. Also, a smaller, free-standing version of the exhibit, designed for lobbies, malls and other public spaces, will tour the state. Dates and locations for both tours are available through Exhibit Touring Services at The Evergreen State College, (206) 866-6000, ext. 6075.

Washington's Family Diary

Geoduck Salute

People, businesses and organizations who gave to the Evergreen Fund, July 1, 1987—June 30, 1988

The President's Club

(\$1,000 or more)

Elizabeth Balderston
Wes and Marie Berglund
AT&T Information Systems
Barlovento International
Carolyn Bassett
Leonard Berger
The Boeing Company
David Brownwood
Burlington Northern Foundation
Yvonne and Edward Cazier
Pacific Coca-Cola Bottling
Richard Collier
Joseph Dear and Leslie Owen
Digital Equipment Corp.
James Dinerman
Robert Eggert
Victor Eisner
Margaret Enderlein
Don and Willa Fassett
Vicki Friend
William Fuller
Herbert and Carol Fuller
Ann Gavell
Gerry and Warren Ghormley
Glazer Camera Supply
The Saul and Dayee G. Haas Foundation
Fred and Dorothy Haley
Kathy and Tom Healy
Hewlett Packard Foundation
Patrick and Maureen Hill
Jean and Ira Hurlburt
Bill Johnson
Mr. and Mrs. John (Bud) Koons
Kathleen and Gene Krattli
Barbara MacPhail
Mr. and Mrs. Neil McReynolds
Kim Kaufman Malin and Larry Malin
George Mante
Matsushita Foundation
Miriam and Charles Matthews
Dr. and Mrs. Charles McCann
Jeanne and Raymond Meredith
Paul Mott and Kris Johansson
M. J. Murdock Charitable Trust
June and Connel Murray
Joan and Dennis Peterson
Peter Broffman
Puget Sound Power and Light
Tish and Robert Reeves
Alex and Suzanne Rosenkrantz
Marriott Corporation
Daniel Scheuer
Mr. and Mrs. Charles Schiff
Seafirst Foundation
Adele and Ralph Smith
Mr. and Mrs. John Trimm
Helene Van Buren
Leslie and Mark Vestrich
David Wagoner
Susan Washburn
Al Melvin Weinstein
Mr. and Mrs. Walter Williams
Donna and Dwight Williamson
Gary and Sandra Worrell
Exxon Education Foundation

The Cooper Point Club

(\$500-\$999)

Aerospace Machinists Lodge 751
Earl and Jan Anderson
James and Georgia Fowler
Herb Gelman
Thomas Ghormley
The HCA Foundation
Jean and John Hennessey, Jr.
W. Thomas Hudson, Jr.
Heather Leach
Robert and Roberta Mahler
Christina Meserve
Peter and Anna Marie Morton
Olympia Garden Club
Pacific American Institute
Michael Rainwater
Irwin and Marion Saltzman
Virginia Schmidt
Seafair
TESC Class of 1987
Joan and Mortimer Thomas
Vedder Foundation
Helene Van Buren
Marilyn Ward
Helen Wolf

Tower Club

(\$250-\$499)

Margaret Birnbaum
Kay Boyd
Harry Branch
Stephen Brozovich
Katherine Bullitt
Rita Cooper
Fred Goldberg
Harry and Rosemary Gregg
Patricia Griffith
Hafer Price Rinehart & Schwerin
I. Frank Hartman
Thomas Hornbein
Japanese American Citizens League
Lisa Johnson
K&T Distributing
Robert and Helena Knapp

L&E Bottling Company, Inc.
Charles and Miriam Matthews
Robert Carol Olson
Leslie Woodruff Owen
Martha Pierce
Alice and Michael Salinero
Gerald and Patsi Scofield
Russell and Joyce Sears
Rebecca Sievers
Niels and Diane Skov
Allen and Nancy South
Joel and Mary Stein
Daphne and David Tang
Jessie Tetlow
Washington State Labor Council
Women's University Club

The Evergreen 100 Club

(\$100-\$249)

Walter Acuna
Steven and Rose Alfred
Durwood and Dorys Alkire
Alpha Delta Kappa

Clifford and Charlotte Alterman
Barbara Altman
Theodore and Gertrude Altonen
Mary Anderson
Simon and Carolyn Ansell
William and Deborah Arney
William and Helen Aron
Shirley Arton
Susan Bartlett
William Bartlett
Joan Battuello
Robert Pike and Nancy Becker
Bruce Bedinger
John Bennett
Abraham Bergman
Gerald and Patricia Blakley
Nicholas Blattner
Renee Blattner
Fowler and Norma Blauvelt
Mary Bley
Marianna Tenney Boles
Mr. and Mrs. William Bowen
Brakeley, John Price Jones, Inc.
James and Kathleen Brewster
George and Dorothy Brodmerkel

Angela Brown
Nathan and Irene Buitenkant
Bartlett and Gladys Burns
Sandy Butler
Douglas Canning
Harriet Caplow
John Carter, Jr.
Lawton Case
Peter Cerbone
Craig Chance
Claudia Chotzen
Irene Christy
Cigna Foundation
Atlee and Mary Clapp
Stephen Clark
Janet Cleveland
Nicholas Clinch
Kenneth Coffin
Errol and Cissy Copilevitz
Cathy Corballis
Larry Crouse
Albert and Charlotte Dangler
Donald and Cherie Davidson
Joe and Garnett Davis
David DeFeyter

Dr. and Mrs. Don DeBra
A.M. DeButts
Kathryn Dernham
Stephen and Lucienne Dimitroff
Debra Dishberger
Eleanor Dornan
Wilbur Downs
Susan Dubuisson
Alfred and Ingrid Eckersberg
Marilyn Erickson
Patrice Erickson
Duane and Nada Estes
Mary Feldman
Don Fincke
Robert and Helen Fisher
Donald and Susan Forsling
Russell Fox
Patricia Frank
Paul and Genevieve Frankenberg
Mary Fross
John Gallagher
Kathleen Garcia
Robert and Sandra Gates
Arthur and Barbara Geller
General Electric Foundation

George and Ellen Ghilarducci
Leslie and Ardelle Gile
George and Lila Girvin
H. Waldo and Shirley Goglin
Eva Goldberg
Julie Grant
Robert and Rose Green
Jon Gribskov
William and Bertha Groves
Julia Gulden
James and Susan Haley
James Hartley, III
Donna Hayes
Thomas and Kathy Healy
Wanda Hedrick
John Hennessey, III
Richard Hesik
Mark and Marilyn Hoehne
Carolyn Duniway Hoffman
Joseph Edward Hogan
Marion Hogan
Nicola Hohn
Richard Hunter
International Business Machines
Wilbur and Virginia Johnson
Theodore and Darlene Johnsrude
Henry Judd
Phelps Kelley
Janice King
Raymond Eula Kirby
Thomas Hugh Kirschner
Paul and Nancy Klotz
Jennifer Knauth
Daniel Koch
Elisabeth Koch-Greene
Mitsuhiro and Lilly Kodama
Edward Kormondy
Henry and Carmen Korn
Robert and Jean Kramer
Lyda Kuth
Elizabeth Kutter
Thomas and Evelyn Lajiness
Isabelle Lamb
James Lang
Marcia Levenson
James and Helen Linger
Gene and Carol Little
John and Edna Lyons
Carolyn and Steven Mackey
James and Nancy MacWhinney
Rona and Harvey Malofsky
Martin Marietta Corporation
Foundation
Neil and Nancy McReynolds
Roberta and Harold McClary
Lawrence Charles McDonald
James and Jacqueline McFarran
McGraw-Hill Foundation
Peter and Shirlee Meador
Lee Meister
Arnold and Ann Millhauser
Robert and Mary Murphy
Vreni and Barbara Naess
Melissa Faith Naso-Kaplan
National Steel and Shipbuilding
James and Katherine Nelson
Charles Nishida
Mark Noble
Wesley Miles Norman
Michiko Ogasawara
William Pennie Oliver
Richard and Patricia Olman
Olympia Lady Lions
Peter and Mary Ellen Onno
Martyn and Candace Owen
Paccar Foundation
Hamilton and Muriel Page
Leonard Pagliaro
Mark and Linda Papworth
Victoria Yeager Patton
Russell Edward Paulsrude
Glenn and Leslie Paxton
Rosemary Peterson
Wallace Quistorff
Rainier National Bank
Mary Randall
Doug and Sandra Rasmussen
Marvin Mary-Lynne Reiner
Denise Robertson
Alice Robinson
William and Katia Robinson
Arnaldo and Lucia Rodriguez
Sarah Rolph
Philip and Marianne Ross
David and Joanne Rudo
Lloyd and Norma Clayton Sabini
Oscar and Lois Sandberg
Mr. and Mrs. A.E. Saunders
John and Joan Schick
Marg and Gerry Schiele
Service Employees International Union
Lester and Harriet Servid
Terry Setter
George and Clara Shinn
Warren and Virginia Simms
Maxine Sitts
Richard Noel Skadan
Amigo and Mildred Soriano
Mark Stephen Souder
Oscar and Barbara Soule
Tania and Tobben Spurkland
William and Carolyn Staley
William and Linda Stanley
Larry Stenberg
Cheryl Stephani and Stan Marshburn
Sarah Stranahan
Bruno and Inge Strauss
Sundstrand Corporation
Foundation
Richard and Patsy Swindler
Tyron Thomas
Kenneth and Joan Thompson
Robert Byrd Thompson
Three Treasures Sangha
Fred Thunberg
Roberta Tidland
Jeanne Shappell Tribe
John Turner
UNISYS
Washington Federation of State Employees

Evergreen Fund Has Banner Year

By Forrest Wilcox,
Director of the Evergreen Fund

You are all tremendous! What a fabulous year you've given the Evergreen Fund for 1987-88.

Your generous support provided an important margin of excellence for students and faculty as they continued to show why Evergreen is one of the most acclaimed liberal arts colleges in the nation.

Here's one major accomplishment for the Evergreen Fund: last year the average gift from alumni and parents increased a whopping 16 percent from the year before. Congratulate yourselves! Call Guinness!

Also, the total for private gifts was very impressive indeed, as last year's total of \$1.1 million exceeded the previous year by more than \$560,000.

Lots of great things happened for the Phone-A-Thon, too. We moved it to October to kickoff the year in grand style. It worked. We really enjoyed talking to you in the fall, when the school year's beginning to pop. And talk we did: more people were contacted by phone than ever before, and the amount of money pledged to the Evergreen Fund increased by 22 percent.

We still get questions about the purpose of an annual fund. See if this helps: think of the Evergreen Fund as a living endowment for the college. Last year, contributions came from the nearly 3,000

alumni, parents and friends you see listed on the following pages. This support boosted the college's 45 Foundation Scholarships (see page 14 for this year's recipients), student and faculty activity grants, Library acquisitions, programming on community radio KAOS 89.3-FM, and many other parts of the Evergreen cause. These gifts are irreplaceable because they're used every year in areas that have no other source of support.

The Evergreen Fund is operated by The Evergreen State College Foundation, which is administered by the Board of Governors, a volunteer group of donors, educators, business people and alumni (see the next spread for two Governors in profile). In case you're wondering, the Foundation manages all the private and grant support that comes to the college, and, at the same time, keeps its own operating expenses to less than 5 percent.

As you can tell from the preceding pages, Evergreen is off to a great start. As I write, this fall's Phone-A-Thon is well underway, and our student callers are chatting away to alumni, parents and friends about academic programs, faculty old and new, and current issues on campus. It's good to be back on one of the most intellectually energetic and vibrant campuses in the country, and you've definitely been a big part of making it happen.



YOU'VE GOT TO HAND IT TO THEM!
Ready and waiting to turn your gifts into Evergreen dreams is the college's Development team of (left to right): Shelly Allsup, office assistant; Debbie Garrington, secretary; Ellie Dornan, director of research and records; Helen Stoutnar, secretary; Forrest Wilcox, director of the Evergreen fund and Don Chalmers, director of corporate/fund relations and executive Foundation director.

Neil Waterman
Robert and Louisa Wells
Dorcas Wheaton
Sid and Pat Matheny White
Robert and Betty Williams
Irmgard and Herbert Wimberger
Janice Wood
Karen Wynkoop
Barbara Yanick
George and Carol Yarbrough
Ted and Ruth Yoshino
David Young
Marjorie Yung

Friends of Evergreen

A
Michael and Bessie Aiello
Glenn and Wisten Aldrich
Richard Alexander
Wendell and Caroline Allen
Alpha Delta Kappa
Dean and Cathy Anderson
Glen Anderson
Archibald Sisters
Anne Argo
William and Deborah Arney
Wilbur and Cynthia Ashcraft
Robert and Jackie Ashton
The Asterisk & Cheese Library

B
Dick Banter
Steven Barnes
Susan Barnes
Andrew Bartels
Richard and Sue Bass
Carolyn Bassett
Leslie Batchelor
Judith Bayard-Cushing
Marcheta Bean
Richard and Dolores Bellon
Janet L. Benke
Steven and Sandra Berglund
Michael and Drew Betz
Michael and Frances Beug
Charles Bissonette
Jeff Blakley
Ronald and Kay Bland
Nathaniel and Mary Blankenship
Mindy Blaski
Elizabeth and Stewart Bledsoe
Blue Heron Bakery
Marianna Tenney Boles
Shirley Bond
The Book House
Walter and Noreen Boy
Harry Branch
Herbert and Shirley Bridge
Gerald and Mary Brown
William and Jovana Brown
Jon and Linda Bryant
Katherine Bullitt
Timothy and Nora Burke
Julie Burman
Bartlett and Gladys Burns
Stephen and Paula Butchko
Sandy Butler

C
Carrie Camus
Harriet Caplow
Amy Carlstad
John Carter, Jr.
Roe Castillo
Wyatt Cates
Peter Cerbone
Don Chalmers
Horace Christensen
Helen Christopher
Georgette Chun
Cal Clary
Isabelle and Elmer Clausen
Tony Clayton
Mark and Karen Clemens
Lois Click
Patricia Clifford
Nicholas Clinch
Coca-Cola Enterprises
Jon and Nina Collier
Richard Collier
Consulate General of Japan
Barbara Cooley
Stephanie Coontz
Rita Cooper
Kathleen Corbett
Raine Corliss
John and Taya Countryman
Pat and Julia Cox
Matthew Coyle
Ruth Adele and Theresa Crater
Harriet Creon
William and Joan Cullen
T.B. Curtz, Jr.

D
Teri Danielson
Mark Davenport
Pamela and Jonas Davila
Joe and Garnett Davis
A.M. DeButts
Dana Delaney
Katherine Dempsey
Doug Denherder
Richard and Fern Dermond
Christina Deweese
Ben Dimitroff
Stephen and Lucienne Dimitroff
John and Linda Dion
Paul and Montine Dobbs
Jocelyn Dohm
Kenneth Dolbeare
Wilbur Downs
Donna Dresch
Susan Dubuisson
Nancy Dufraime

E
Jesus Echeverria
Edmonds High School Faculty
Richard Edwards
Robert Eggert
Lester and Mary Eldridge
R.J. and Sonya Elend

Anthony and Michele Elhardt
Diane Ellison
Brian and Kristi Elslip
Carol Elwood
Sarah Emery
Gary Engbrecht
Kathy and James Erlandson
Evergreen Expressions

F
Francis Feikema
Torres Felix
Jane Field
Susan Fiksdal
Son and Susan Finkel
Robert and Helen Fisher
William Fisher
Lowell and Marie Fletcher
Roberta Floyd
Timothy and Lezlie Ford
James and Georgia Fowler
John and Nelda Fraker
Mary Fross

G
John Gallagher
Gannett Foundation
Gardeners and Growers, Inc.
Sylvia Gardner
Booth Gardner
Tom Geha
Edward and Lynn Geis
Herb Gelman
George and Ellen Ghilarducci
John Giesen
Dixon Gilbreath
Leslie and Ardelle Gile
Roberts Gillis

Mark and Marilyn Hoehne
Charlee Holt
Dee and Gretchen Hooper
Marilyn Horning
Alice Houston
James and Evelyn Huff
Willard Humphreys
Douglas Hunter
Judith Huntley
Karen Huntsberger
Juanita Hurst

I
I.A.M. Aerospace Workers
Doris Ivanhoe

J
Japanese American Citizens League
Julian and Josephine Jenner
Kristine Johansson
Jan Johnson
Mark and Deborah Johnson
Russell and Patricia Johnson
William and Barbara Johnson
Marc Jones
Stella Jordan
Leyton Jump

K
K & T Distributing
Sandra Kalla
Ilene Kasten
Marianne Kawaguchi
Debbie Kearney
Julia Kelen
Daniel Kelleher

Lauren and Jane Lucke
Charles Lukey
Jens Lund
Anne Lund
Jocelyn Lyman
John and Jerilynn Lyman

M
Jean MacGregor
Barbara MacPhail
Michael and Barbara Maki
George Mante
Rudy and Gail Martin
Suzanne and Robert Marx
Ed and Catherine May
Wyoma May
Bill McCausland
Bertha McGonigle
Neil and Nancy McReynolds
Dorothy McCallum
Helen McCann-Scales
Roberta and Harold McClary
Tina McCloud
Betty and Loren McGovern
Susan McRae
Jeanne Mehninger
Margarita Mendoza de Sugiyama
Joyce Mercuri
Midwest Library Service
Truck Mills
Richard and Bertha Moe
Lorri Moore
Marian Morgan
Joe Morris
Scott Morrison
Katherine Morse

POSSCA, Inc.
John and Mary Powell
Robert and Elizabeth Preble
Brian Price
Christabel Prost
Puget Sound & Light Company
Puget Sound Area Local APWU
Melora and Kevin Purell

Q
Wallace Quistorff

R
David and Diana Ragsdale
Gordon and Ruth Raister
John Rasch
Mark Rauch
Donald and Helen Reed
Sam and Margery Reed
Susan Reichert
Virginia and Gary Reid
Julie Reimer
Marvin and Mary-Lynne Reiner
Christine Reinhard
Reggie Rendon
Maryann Reynolds
Jewell Rhoades
Richard's Import Auto Service
Barbara Robbins
Denise Robertson
Joyce Robertson
William and Katia Robinson
Diana Robishaw
Gail Robson
Rockin' Rebels
Laura Roderick
Arnaldo and Lucia Rodriguez
Frederick Romero

Gladys Stark
Larry Stenberg
Roger and Geraldine Stenberg
Chris and Irene Stevenson
Esther Stohl
Robert and Helen Stoutnar
Robert and Judith Sutherland
Sue and Ray Swanson

T
Frances Talley
Daphne and David Tang
Jerry and Martha Taylor
Marlyn and Judy Taylor
Peter and Virginia Taylor
David and Dorothy Teeter
W.N. and Alberta Tefft
TESC Alumni Association
TESC Bookstore
TESC Campus Recreation Center
TESC Class of 1987
TESC Photo Services
TESC Vancouver Class of 1987
Joan and Mortimer Thomas
Mike Thomas
Dian Thompson
Kirk Thompson
Olga Thompson
Three Treasures Sangha
Fred Thunberg
Reed Tindall
Marilyn Trent
Verna Tresner
Anna Trombley
Nikola Trumbo

U
U.F.C.W. Local 1105
U.F.C.W. Union Local Number 367
United Bank
United Food & Commercial Workers

V
Delia Van Brunt
Ann VanDeman
Jacqueline VanDeman
Mitzi VanDewege
Jack and Marjorie Vickers

W
Ronald and Dorothy Wade
Pat Wald
George Walker
Ruth Walton
Susan Washburn
Washington Federation of State Employees
Washington State Labor Council
Kathryn Watne
Alice Watts
Wedgwood Elementary School
Gregory Weeks
Joan Weeks
Allan and Melvin Weinstein
Amelia West
Westside Bowling Lanes
WFSE Spokane Area Local 1221
Ladd Whitecher
James and Nancy White
Sid and Pat Matheny-White
Whitney Designs
Melanie Whittaker
Margaret Whyte
Phil Wiatrak
Robert Wick
Alfred Wiedemann
Ross and Cathy Wiggins
Forrest and Kerri Wilcox
James Wilke
Dennis Wilkins
Don and Mimi Williams
Thomas Williams
Lynda Williamson
Lorihe Williamson-Rathermel
Hubert Wilson
T. D. and Audrey Wilson
William and Joan Winden
Todd Wirtz
Julie Wittrock
Helen Wolf
Karen Wolf
William and Mary Wolfe
Women's University Club
Gary Worrell
Gary Worthington

Y
Barbara Yanagimachi
Linda Young

Z
William and Donna Zaugg

Friends of KAOS

A
Bradley Aiken
Kenneth Albert
Diane Allen
Chuck Allison
Glen Anderson
Archibald Sisters

B
Gregory Babior
Robyn Banks
Dick Banter
Andrew Bartels
Leslie Batchelor
Richard and Dolores Bellon
Janet Benke
Karen Berkey
Michael and Drew Betz
Blue Heron Bakery
Amy Bohn
Shirley Bond
Charles Bonsteel
James Brauneis
Eric Brinker
Marcy Brown
William and Jovana Brown
Honora Brunelle
Patrick Bryant

Fare Thee Well

Evergreen greeted with mixed feelings the departure of two key officers this summer. The prevailing emotions were happiness for, and pride in, Vice President **Sue Washburn** and Development Director **John Gallagher**, who moved on to new positions in higher education in August and September, respectively, after a combined 14 years in development and administration for the college.

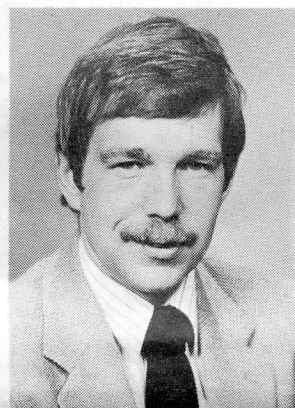
The one-two punch of Evergreen's fund-raising efforts since 1983, the Washburn-Gallagher duo led a hard-working Development team that raised more than \$6.7 million in private and government contributions during their tenure. Last year their operation pushed that figure over the \$2 million annual mark for the first time.

While Gallagher started at Evergreen as Washburn's associate director of Development in 1983 and became director before his departure, Washburn began her stay at the college as director of Development and executive director of The Evergreen State College Foundation in 1979, and was appointed vice president for Development and Administrative Services in 1985.

President **Joe Olander** is filling Washburn's vacancy by reorganizing Development and Administrative Services into two new divisions with vice presidents to head each. Twenty-year Evergreen veteran **Ken Winkley** was appointed as vice president for Finance and Administration. A national search is underway to fill the second vice presidency for College Advancement, which will unite



Washburn



Gallagher

the areas of development, alumni relations and public relations.

Meanwhile, the Development staff and staffers in the other offices of College Advancement are carrying on the Gallagher-Washburn tradition with a full slate of fund-raising and networking activities for Evergreen. Friends and colleagues of Washburn can reach her at her new job as vice president for University Relations, St. Lawrence University, Canton, New York 13617. To get in touch with John Gallagher, who is now an associate vice president for University Relations at Seattle University, write to his home at 504 Grandview, Olympia, Washington 98502.

Glazer's Camera Supply
Eva Goldberg
Fred Goldberg
Alvin Gordon
Thomas and Pauline Gordon
Henry Govert
Wanda Grande
Nina Grandy
Robert Greene
William and Shirley Greene
Francis and Jewel Gresham

H
Hafer Price Rinehart & Schwerin
Peter Hahn
Abby Haight
Fred and Dorothy Haley
Stan Halle
David and Molly Hallock
Ed Hamlin
Jeffrey Hanks
James and Diana Hanson
James and Patricia Harnish
Stan Harrelson
Jane Harrison
Ann Harvill
Mr. and Mrs. Victor Haselbach
Mr. and Mrs. James Haseltine
Walter and Mikiko Hatch
Scott Hauser
Katherine Haynes
Paul Henderson
Peta Henderson
Cheryl Henderson-Peters
Elizabeth Hendricks
Frank Hensley
Dale and Darlene Herron
Laura Hess
Robert and Arty Hilden
Patrick and Maureen Hill
Jacqueline Hinchliffe
Apostolado Hispano
Douglas and Linda Hitch

Gary and Linda Kellogg
Merilyn Kelly
Timothy Kelly
Gary Kelsberg
Christine Kerlin
Ernestine Kimbro
Gary King
Charles and Pearl Kirkpatrick
Robert and Helena Knapp
Herman Koehler
William Kopp
Edward Kormondy
William and Susan Koss
Julia Koszalka
Todd Kowalski
Kathleen and Gene Krattli
Margaret Kurtz
Elizabeth Kutter

L
L & E Bottling Company, Inc.
Patricia Labine
Kaye V. Ladd
Roger Lamarche
Isabelle Lamb
Harold Lane
Lucy Larosa
Howard Larson
Alice Latunen
Lanny Lawrence
Hondo Layes
Robert and Mary Leahy
Susan Lehman
David Lewis
Dick and Jane Lewis
Pamela Lewis
Jeffrey and Eva Liang
Betty Linehan
Minnie Lingreen
Richard and Shirley Linton
Gene and Carol Little
Kay Livingston
Robert Longman, Jr.
Rosemary Lowry

Peter Myers
N
National Union of Hospital & Health Care Employees
Fred Nigito
Sandy and Chuck Nisbet
Mark Noble
Louise Nordbye
Gary and Judy Norton

O
Edward and Patricia O'Brien
Kevin and Deborah O'Carroll
Joseph and Sheryl Olander
Janet and Timothy Oliver
Mary Oliver
William and Pennie Oliver
John Olson
Robert and Carol Olson
Olympia Association of Professional Mortgage Women
Olympia Friends Meeting
Olympia Garden Club
Olympia Lady Lions
Olympia Volleyball Club

P
Pacific American Institute
Pacific Coca-Cola Bottling Co.
Pacific NW Newspaper Guild
Ralph and Maxine Clark Padget
Charles Pailthorp
Jill Pardini
James Parker
Kenneth and Marianne Partlow
Craig Partridge
Robert Payne
John and Barbara Perkins
David Peterson
John Pfeiffer
Ralph and Linda Piazza
Rachel Pickering
Robert Pierson
Joseph Pollock

Jacob and Barbara Romero
Glen and Peggy Roper
Alex and Suzanne Rosenkrantz
Pearl Roundtree

S
Kimberly Salerno
Michael Salinero
Bruce Sanford
Curtis Sapp
Patricia Sarmento
Mr. and Mrs. A. E. Saunders
Judith Saxton
Betty Schaefer
Ben and Bev Schatz
Virginia Schmidt
Bertha Schulz
Norm Schut
Richard and Janet Schwartz
Edgar and Winifred Scofield
Raymond Scott
Glen and Lynn Scroggins
Seafair
Terry Setter
Shakey's Pizza Parlor
Hannelore Sheafe
Eva Shinagel
Dennis and Linda Shoemaker
Scott and Judith Simmons
Sandra Simon
Ralph and Diane Skov
Shawna Sliva
Robert and Ruth Sluss
Matthew Smith
Paul Smith
Zachary and Sally Smith
Vytautas Snieckus
Denis Snyder
Oscar and Barbara Soule
Allen and Nancy South
John Spencer
Mary St. John
Ronald St. Laurent
Philip and Sylvie Stahl

Stephanie Buddenbaum
Julie Burman
Valerie Burson

C
David Campbell
Carrie Camus
Payton Carling
Amy Carlstad
Donna Carpenter
Roe Castillo
W.D. Cates
Wyatt Cates
Heather Diane Clark
Elizabeth Clarke
Cal Clary
Tony Clayton
Lois Click
Rita Cooper
Kathleen Corbett
Raine Corliss
Corporation for Public
Broadcasting
Ginna Correa
Carmela Courtney
Safiya Crane
Ruth Adele and Theresa Crater

D
Teri Danielson
Mark Davenport
Claire Davis
Doug Denherder
Richard and Fern Dermond
Christina Deweese
George and Susan Dimitroff
Stephan Dimitroff
Kathy Dockins
James Dodd
Donna Dresch
Pam Druliner
Nancy Dufraine

E
Jesus Echeverria
Robert Eggert
Keith Eisner
Carol Elwood
Sarah Emery
Gary Engbrecht
Norma Epstein
Patrice Erickson
Kathy and James Erlandson

F
Francis Feikema
Torres Felix
Don and Susan Finkel
William Fisher
Laurie Fitzgerald
Tamara Flick-Parker
Sheila Fox
John and Nelda Fraker
Keith Fredrikson
Elana Freeland
Adam Freeman
Dorothy Freemantle
Lawrence Freemantle
Cathy Fritsch
Jan Frost

G
Gardeners and Growers, Inc.
Tom Geha
John Gerecht
Michael Gibson
Roberts Gillis
Kathryn Gordon
Michael Gordon
Susan Gordon
Henry Govert
Julia Gulden

H
Barbara Haggerty
Peter Hahn
David and Molly Hallock
Ed Hamlin
Raymond Hankins
Jeffrey Hanks
James and Diana Hanson
Jane Harrison
James Hartley, III
Scott Hauser
Kelly Hawk
Leo Healey
Wanda Hedrick
Paul Henderson
Cheryl Henderson-Peters
Elizabeth Hendricks
Jacqueline Hinchliffe
Apostolado Hispano
Patricia Holm
Cheryl Hooper
Marilyn Horning
Charles Howell
William Hudson, III
Will Humphreys
Douglas Hunter
Richard Hunter
Karen Huntsberger

J
Jerry Jackson
Debra Janison
Lynn Johanson
Jan Johnson
Mark and Deborah Johnson
Marc Jones
Joseph Joy
Leyton Jump
Kort Jungel

K
Sandra Kalla
Ilene Kasten
Marianne Kawaguchi
Julia Kelen
Cynthia Kelley
Phelps Kelley
Timothy Kelly
Gary Kelsberg
David Kershaw
Gary King
Kristina Klawitter
Pamela Knudsen
Anna Kole

William Kopp
William and Susan Koss
Alex Kostelnik
Robert Kotta
Patricia Kovacs
Todd Kowalski
Margaret Kurtagh

L
Patricia Labine
Nancy Laich
Roger Lamarche
Michele Landa
Mikel Lane
Lucy Larosa
Hondo Layes
Peter Lesser
Etty Linehan
Robert Longman, Jr.
Rosemary Lowry
Charles Lukey
Jens Lund

Brian Price
Evan Price
Christabel Prost
Julie Puhich
Melora and Kevin Purell

R
David and Diana Ragsdale
Brian Rainville
Brian Raiter
John Rasch
Mark Rauch
Virginia and Gary Reid
Christine Reinhard
Reggie Rendon
Richard's Import Auto Service
Peter Rickett
Carl Riddels
Denise Robertson
Diana Robishaw
Gail Robson
Laura Roderick

Mike Thomas
Cheryl Thurston
Reed Tindall
Anna Trombley

V
Elizabeth Vail
Tobi Vail
Winston Vidor

W
Ronald and Dorothy Wade
Pat Boutin Wald
George Walker
Petrina Walker
Ruth Walton
Washington Federation of State
Employees
Amelia West
Ladd Whitcher
James and Nancy White
Sid and Pat Matheny-White

Stuart and Frances Shumway
Barbara Smith
Sue Staggs
TESC Vancouver Class of 1987
Kirk Thompson
Mikola Trumbo
Byron and Bernice Youtz

Corporations and Foundations

AT&T Information Systems
Action Power Equipment
Aerospace Machinists Lodge 751
Aetna Life & Casualty
Foundation
Alpha Delta Kappa
ARA Services
Barlovento International
The Boeing Company

Saul & Dayee Haas Foundation
Seafair
Seafirst Foundation
The Seattle Times
Service Employees International
Union
Shearson Lehman Hutton, Inc.
Smithkline Beckman Foundation
State Farm Companies
Foundation
Sundstrand Corporation
Foundation
Three Treasures Sangha
U.F.C.W. Local 1105
U.F.C.W. Local 367
United Food & Commercial
UNISYS
Vedder Foundation
W.F.S.E. Spokane Area Local
1221
Washington Commission for the
Humanities
Washington Mutual Savings Bank
Washington Federation of State
Employees
The Washington Post Company
Washington State Labor Council
Women's University Club

Local Businesses

AMT Auto and Towing
Advanced Video
Archibald Sisters
Audio Northwest
Ben Moore's
The Blue Heron Bakery
Boston Harbor Marina
Brame's RV/Klassic Coach
Brewery City, Olympia
Buffalo Sign Co.
The Bug Lady
Capitol Seafoods
Carnegie's
Cedarville Trading Company
The Chatterbox
Chinatown Cafe
Chuck's Mobile Home Service
Concepts in Motion
Country Flair Salon
Curtis Lumber Company
Dancing Circles
Dirty Dave's Gay 90's
Discovery Toys
Don's Window and Carpet
Earth Magic
Erlch's Office Supply
Evil Genius
Four Seasons Books
Freeway Records and Tapes
Good Life Health Foods
Grand Mound Video
Graphia
Griswold's Office Supply
Hair Extraordinaire
Handyman Pressure Wash
Illusions New Age Books
International Imports
The Japanese American Citizens
League
Jay Vee Health Foods
K&T Distributing
L&E Bottling Company, Inc.
Little Caesar's
Mansion Glass Company
Mrs. Powell's
Nancy Curtis
New Creations T Shirts
Old World Bakery
Olympia Association of Profes-
sional Mortgage Women
Olympia Farmers Market
Olympia Food Co op
Olympia Garden Club
Olympia Greenhouses
Olympia Lady Lions
Olympia Veterinary Hospital
Pizza Haven, Olympia
Positively 4th Street
Pro Image Sports
Radiance
Rainey Day Record Company
Richard's Import Auto Service
Rochester Automotive
Rochester Drug
Rochester Home Center
Rochester Lumber
Ron's Barber Shop
Rhythm City
Sara's Tire
Scatter Creek Veterinary Clinic
William and Victoria Sheldon
The Sherwood Press
Shipwreck Beads
South Marine Repair
Suntan's West
TESC Bookstore
TESC Organic Farm
Town Tubs
Tumwater Rentals
Tumwater Tire and Wheel
U S Marine Sales
Verde Park IGA
Walt's Radiator
Yenney's Music Company

Meserve Serves



Meserve

Time goes by and Christina Meserve only becomes more intertwined with Evergreen. Tracing through the years, these are the links—a Geoduck resume in brief—between this 1975 alumna and her alma mater.

► 1971: Selecting programs designed to prepare her for law school, she enrolls for Evergreen's first year of operation.

► 1975: A member of the first class of "pure," four-year Greeners, Meserve graduates and enters law school at the University of Washington. She graduates, passes the Washington bar in 1978, and returns to Olympia, where she is now an attorney who specializes in family law and a partner in the law firm of Connolly, Holm, Tacon & Meserve.

► 1978: Meserve is among a group of early Greeners who decide Evergreen is ready for an "official" alumni organization. In September, more than 100 alums show up at a meeting who feel the same way, and the Alumni Association is born. Meserve is elected to serve as its first president.

► From 1984 on: Backing her belief in the potential of alumni for greater giving, she becomes a member of the Board of Governors of The Evergreen State College Foundation. Since then, she has been involved in various volunteer tasks, including assisting Development staff members in fund-raising efforts, and serving on the screening committee to determine the recipients of Foundation Scholarships. Of this, she says: "It is tremendously rewarding—and difficult—helping decide who will receive a scholarship. The students who come to Evergreen are so different. Imagine having to choose—on merit—between an excellent student fresh out of high school and a 50-year-old displaced homemaker who's striving to educate herself. Reviewing scholarship files is always tough, but I always feel like I've contributed something."

You've contributed a lot, Christina. Thanks for your Geoduck best!

M
Masae Mackey
Robert Mackey
William Mahler
Michael and Barbara Maki
James Mateson
Walter Maun
Carol Maynard
Zo McCarty
Joanne McCaughan
Bill McCausland
Tina McCloud
Judith McKenzie
Susan McRae
Joyce Mercuri
David Miller
Truck Mills
Richard and Bertha Moe
Amy Moon
Marda Moore
Joe Morris
Katherine Morse
Logan Beatrix Mumaw

N
Fred Nigito
Sandy and Chuck Nisbet
Mark Noble

O
Edward and Patricia O'Brien
Kevin and Deborah O'Carroll
Leva Chaks
Joseph and Sheryl Olander
Michael Olson
Olympia Volleyball Club
Willow Ostergaard

P
Charles Pailthorp
Cynthia Park
James Parker
Kenneth and Marianne Partlow
Craig Partridge
Cheryl Henderson-Peters
David Peterson
William Phillips
Robert Pierson
Joseph Pollock
Holly Porter
Stuart Poston
Richelle Potter

Ethan Rogol
Frederick Romero
Jacob and Barbara Romero
Kimberly Rosner
Pearl Roundtree

S
Kimberly Salerno
Alice Patience Salinero
Bruce Sanford
Curtis Sapp
Patricia Sarmento
Betty Schaefer
Gerald and Patsi Scofield
Glen and Lynn Scroggins
Terry Setter
Hannelore Sheafe
William and Victoria Sheldon

Mark Sherman
Mary Sherman
Michael Simmons
Glenn Simonsen
Niels and Diane Skov
James Skutt
Shawna Sliva
Paul Smith
Zachary and Sally Smith
Susan Sniado
Denis Snyder
Susan Southwick
Danny Spearman
Patricia Spears
John Spencer
Amy Sprengel
Ronald St. Laurent
Philip and Sylvie Stahl
Gladys Stark
Andrew Stebbins
Roger and Geraldine Stenberg
Katherine Sterling-Laird
Brenda Stocker
Diane Stoebe
Jennifer Strauss
Barbara Sumberg
Mary Swain
Sue and Ray Swanson

T
Frances Talley
Jerry and Martha Taylor
Daniel Tennant

Whitney Designs
Melanie Whittaker
Phil Wiatrak
Robert Wick
Ross and Cathy Wiggins
Don and Mimi Williams
Thomas Williams
Hubert Wilson
Carla Wulfsberg

Y
Barbara Yanagimachi
Kathy Ybarra

Friends of the Library

Richard Alexander
Mary Bley
The Book House
Robert and Odie Buchanan
Harriet Caplow
Jon and Nina Collier
Rita Cooper
William and Joan Cullen
Ida Dightman
Jeffrey Duddles
Richard Edwards
Diane Ellison
Heidi Engle
James Fernandez
Sylvia Gardner
Brian Gerheim
Faith Hagenhofer
Frank Hensley
Patrick and Maureen Hill
Winifred Ingram
James Jones
Charles and Pearl Kirkpatrick
Herman Koehler
Kaye Ladd
James and Helen Linger
George Mante
Midwest Library Service
Madelene Mullen
Vreni and Barbara Naess
Olympia Lady Lions
Ralph and Maxine Padget
John and Barbara Perkins
Ralph and Linda Piazza

Brakeley, John Price Jones, Inc.
Burlington Northern Foundation
CHEF Endowment Fund
Cigna Foundation
Connecticut Mutual Life
Insurance
Connecticut Savings Bank
Corporation for Public
Broadcasting
Equitable Life Insurance
Exxon Education Foundation
FMC Foundation
Gannett Foundation
General Electric Foundation
Glazer Camera
The Hospital Corporation of
America Foundation
Hafer Price Rinehart & Schwerin
Helen Martha Schiff Foundation
Hewlett Packard Company
Honeywell Foundation
Illinois Bell
Intel Corporation
International Business Machine
The Johnson Wax Fund, Inc.
King County Arts Commission
Marsh & McLennan Companies
Martin Marietta Corporation
Foundation
Matsushita Foundation, Inc.
The May Stores Foundation, Inc.
McGraw-Hill Foundation
McKesson Foundation, Inc.
Microsoft Corporation
Mitre Corporation
National Steel & Shipbuilding
Office and Professional
Employees Union
Paccar Foundation
Pacific American Institute
Pacific Distributors
Pacific Northwest Bell
Pacific Northwest Newspaper
Guild
Principal Life Insurance
Company
Puget Sound Power & Light
Rainier National Bank
Ralson Purina Company
Reader's Digest Foundation

Alumni

A
Walter Acuna
Michael Ahern
Bradley Aiken
Kenneth Albert
Sonja Alexander
Sara Algots
Colleen Allen
Diane Allen
Megan Allen
Kathleen Anderson
Linda Anderson
Mary Randolph Anderson
Nancy Anderson

Thomas Ansart
Simon Ansell
Harriet Arnold
Shirley Arton
Lucy Auster
Patricia Avery

B
Toni Bailie
George Baitinger, III
Scott Baker
Christina Koons Baker
Tim Ball
Debora Barkus
Susan Bartlett
Jeffrey Bartone
Louise Batson
Joan Battuello
Annamarie Beckmann
Bruce Bedinger
Patricia Bedinger
Richard Bender, Jr.
Janet Benke
John Bennett
Susan Bent
Michael Bergstrom
Karen Berkey
Jan Bernstein
Steven Bertran
Linda Bestwick
Richard Bestwick
Donald Bird
Susan Bird
Margaret Birnbaum
Mary Bittinger
Carla Black
Nicholas Blattner
Renee Blattner
Mary Bley
Joseph Blum
David Boggs
Neil Bogue
Amy Bohn
Jill Boniske
Charles Bonsteel
Terry Bonyng
Linda Booky
Gregory Booth
Thomas Booze
Gretchen Borek
Ronald Bowitz
Kay Boyd
Jerry Boydston
James Brauneis
Marjorie Brazier
Joseph Brecha
Daniel Bretzke
Steven Brewster
Mari Brockhaus
Neal Broida
Angela Brown
Betty Brown
Louise Brown
Margery Brown
Robert Brown
Peter Bruck
James Brunner
Andrew Buchman
Nelsa Buckingham
Phillip Bunker
John Burbank
Daniel Burden
Mary Burg
Barrett Burr
Alan Burre
Valarie Burson
James Byrnes

C
Lynda Caine
Susan Calhoun
Robert Campbell
Sharon Campbell
Douglas Canning
Gary Cantrell
Drew Carey
Ross Carey
Leonard Carr
Nina Carter
Lawton Case
James Cauffman
Douglas Chadwick
Melissa Champlin
Craig Chance
Joanna Charnas
Claudia Chotzen
Dianne Christensen
Erik Christianson
Kent Christman
Irene Christy
William Clausen
Janet Cleveland
Kenneth Coffin
Andrea Coker
Lawrence Cole
Gail Collins
Cathy Conner
Nancy Connolly
Cajean Cordy
Jeanine Corr
Ginna Correa
Stuart Corsa
Clifford Cotey
Dennis Cotter
Larry Couch
Carmela Courtney
Safiya Crane
Robert Crawford
Clayton Creager
Stephen Creager
Deborah Creveling
Lindsay Cross
Jonathan Cruz
Nancy Cruz
Doris Culliton

D
Susanne Dade
Bruce Daily
Charles Davis
Katherine Davis
Ana De Give
Joseph Dear
Donald Delahunt

Jacqueline Delahunt
Linda Delorme
Michael Denoyer
Roxanne Denoyer
Kathryn Dernham
Edward Deryckx
Janet Detering
Carol Detweiler
Steven Devin
Dona Dezube
George Dickson, IV
Laurie Dieterich
Ida Dightman
Patricia Dillingham
Stephan Dimitroff
Debra Dishberger
Carmen Doerge
Randolph Dole
Peter Dolliver
Lawrence Dominguez
Margaret Donaldson

Wyatt Gilkie
Carolyn Gilmore
Laura Goff
Ronald Gold
Karen Goldman
James Gonzales
David Goodward
Margaret Goodward
Cynthia Goodwin
Kathryn Gordon
Michael Gordon
Barbara Graf
Julie Grant
Donovan Gray
Stephen Green
Joan Gregory
Robert Gregory
Jon Griboskov
Charles Griffiv
Teresa Grove
Julia Gulden

John Irwin
Robert Iyall
J
Helen Jaeger
Debra Janison
Catherine Johnson
Lisa Johnson
John Paul Jones, III
David Jones
Gregory Jones
James Jones
Jeanne Jones
Laurie Jones
Richard Jones
Marcia Jordan
Joseph Joy
Maureen Juhola
K
Joshua Kairoff
Scott Kauffman

Tyra Lindquist
Karen Lohmann
Gary Lorentzen
Thomas Lufkin
Marilyn Lupinacci
James Lux
Lynn Lynch
M
Dori MacDonald
Carol MacCracken
Ronald Magram
Dennis Mahar
William Mahler
Daniel Mahoney
Kim Malin
Duncan Mann
Grace Manzie-Werner
Tracy Marsailes
Kathy Marshall
Stan Marshburn
Barry Martin

Gary Mozel
Steven Mozel
Timothy Mulcahey
Madeline Mullen
Suzanne Mulligan-Morris
Dennis Mullikin
Peter Mullineaux
Linda Murphy
Nancy Musgrove

N
Deborah Nagusky
Melissa Naso-Kaplan
Mary Neal
Douglas Nebert
Jennifer Neilson
Pamela Neimeth
Loretta Nelson
Marjorie Nelson
Michelle Neubert
Jane Neuharth
Sharon Newell
Charles Nishida
Wesley Norman
Rebecca Northway
Richard Nuckolls

O
Patti O'Brien
Mare O'Connor
Timothy Oguri
Michael Olson
Leslie Oren
V. Lorraine Osborn
Marian Osborne
Leslie Owen

P
Jennifer Page
Leonard Pagliaro
Anthony Pantley
Dirk Park
Melissa Parker
Lillie Parks
Janet Partlow
Victoria Patton
Russell Paulsrude
David Pavelchek
Raymond Pavelko
Maris Peach
Timothy Pearce
Christine Peck
Tia Pennell
Cheryl Peters
David Peters
Karen Petersen
Mary Petersen
Christina Pohn
John Petrich, Jr
Vicki Phelps
Richard Phillips
Kevin Phillips
Molly Phillips
Ellen Pickell
Bradley Pierce
Martha Pierce
Priscilla Pierce
Steven Pinard
Carol Pinegar
Mariel Plaeger-Brockway
Roy Plaeger-Brockway
Noah Poritz
Holly Porter
Stuart Poston
Judith Prest
Daniel Preston
Katherine Preston
Mary Prevost
Longueville Price, III
Evan Price
Ramona Price

R
Michael Rainwater
Mary Randall
Victoria Randlett
Lisa Randlette
Scott Rapp
Deanna Ray
Emily Ray
Brett Redfean
Alexander Reed, Sr.
Kathron Richards
Janet Richardson
Peter Rickett
Carl Riddels
John Ridgway
April Rieck
John Riley
Roberta Ritter
Cynthia Roberson
Harvey Roberts
Ronald Roberts
Tamara Roberts
Alice Robinson
Tyler Robinson
Barbara Roder
Gareth Rohde
Lisann Rolle
Sarah Rolph
Leslie Romer
Pearl Rose
Geoffrey Rothwell
Diane Royal
Marie Russo
Christopher Metz
Janet Meurs
Margaret Millard
David Miller
Norma Miller
Pamela Miller
Steven Miller
Michael Mills
Ralph Minor, Jr.
Martha Mistretta
Laurie Moody
Steven Moore
Roland Morris
Diane Morton
Allen Moser
Jeremy Moser
Sarah Moser
Susan Moser
Judith Mosier
Susan Moyer

S
Albin Saari
Raymond Sachs
Alice Salinero
Scott Salzer
Terrese Salzer
Jane Sameth
Antonio Santoy
James Sayce
K. Burnell Schaetzel-Hill
Laurie Schaetzel-Hill
Lillian Schauer
Jane Scheffer
Stephen Schramke
Steven Schreurs
Mary Schroeder

For Dennis Peterson, better known as Denny, the question was simple, but answers were not particularly encouraging.

"How in the world are we ever going to raise money for this place?"

It was 1976, and the people gathered to consider that question were the founding members of Evergreen's first Board of Governors. They had been called together by President Charles McCann to begin The Evergreen State College Foundation to raise funds for the new state college. Not even six years old, Evergreen had a minimal endowment and maximum needs.

More than twelve years later Denny Peterson still remains. Known to Olympia's money-minded as vice president of the Shearson Lehman Hutton investment firm and the voice of a daily stock report on KGY radio station for more than twenty years, Peterson recalls with pride how far the Foundation Board and college Development office have come in just over a decade.

Starting from scratch, the Foundation's fund-raising efforts have grown to gather hundreds of thousands of dollars every year and, for each of the past two years, more than a million dollars for Evergreen needs. Prominent among the string of "firsts" was establishing Evergreen's first Foundation Scholarships, which have grown in number from three to 45 (see story on page 14), and mounting the first major fund-raising event, which featured guided tours to see Seattle's 1978 King Tut exhibit.

An active community leader in Thurston County, Peterson currently applies his expertise by chairing the resource management committee, which deliberates on Foundation investments and expenditures on everything from scholarships to lab equipment and art supplies for student projects. One founding Governor who's still going strong, Peterson persists at seeking new, fruitful answers for that original question, "How in the world...?"

Denny Shows 'Em How



Peterson

Susan Donner
Eleanor Dornan
Edwina Dorsey
Janet Drew
Conrad Driscoll
James Duncan
Janet Dunlop
Carmen Dastman

E
Nancy Edwards
Heidi Ehrenberg
James Ehret
Eric Einspruch
Keith Eisner
Scott Englander
Heidi Engle
Jonathan Epstein
Marilyn Erickson
Jack Etheridge

F
Sherry Farber
Pamela Farr
Thomas Farrell
Carl Fawcett
David Fehsenfeld
Susan Feiner
Florence Feldman
Kyzyl Fenno-Smith
James Fernandez
Kent Ferris
William Ferris
Richard Finnigan
Lisa Fleming
Kimberly Foley
Robert Foster
Laurie Frankel
Steven Friddle
Peter Friedman
Jan Frost
Joseph Fuller

G
Edward Gales
Douglas Gallagher
Amy Garling
Gabrielle Geraghty
John Gerecht
Kathleen Gerrald
Vel Gerth
Thomas Ghormley

Timothy Guy

H
Jean Haakenson
Thomas Hagen
Faith Hagenhofer
Barbara Haggerty
Jon Halper
Claudia Hampton
Carmen Hanna
Robert Hanna
Peter Hansell
Mark Hansen
Michael Hansen
Kimberly Hanson
Barbara Harmala
Marilyn Harris
Charles Hart, III
Shaine Hart
Michael Harter
James Hartley, III
Leslie Harvill
Carla Hasegawa
Donna Hayes
Janet Healy
Wanda Hedrick
Sue Heflin
Therese Heinrich-Burden
Richard Helm
Cecile Henault
Ellen Henderson
Scott Henderson
Randall Henery
John Hennessey, III
Catherine Hennings
Timothy Hennings
Roger Henry
Carolyn Hoffman
Joseph Hogan
Patricia Holm
Paul Holt
Christine Holz
Charles Howell
Peter Humleker
Lynn Humphrey
Richard Hunter
Judy Hyslop

I
Brandith Irwin
Gregory Irwin

Toy Kay
Elizabeth Keeney
Richard Kelly, Sr
Mary Kelsie
Barbara Kendziorek
Jan Keogh, III
Susan Kerber
Barbara Keyt
Ralph Kile
Janice King
Thomas Kirschner
Ellen Kissman
Eric Kjesbu
Annette Klapstein
Kristina Klawitter
Jennifer Knauth
Jennifer Knudsen
Pamela Knudsen
Daniel Koch
Elisabeth Koch-Greene
Joseph Koczur, Jr
Alan Kohl
Anna Kole
Margaret Koler
Teresa Kolp
Neill Karen
A. Kramer-Farris
Donna Kreiensieck
Alan Krieger
Lyda Kuth

L
Paul Lambert
Tanna Lambert
Michele Landa
James Lang
Patricia Lavelle-Brecha
Geraldine Lawrence
Peter Lawson
Norbert Lazar
Kevin Leavitt
Laymond Lee
Sally Lee
Kristina Lenke
Pamela Lent
Peter Lesser
Deborah Leung
Marcia Levenson
Norman Levy
Rebecca Liebman
Judy Lindlauf

Georgia Martin
Stuart Martin
Shaina Masters
James Mateson
Wendy Matthews
Larry Mauksch
Walter Maun
Carol Maynard
Joanne McCaughan
Anita McIntosh
Edward McQuarrie
Susan McRae
Keith McCandless
Mary McCann
Richard McClure, Jr
Martha McCoy
Lawrence McDonald
Amy McFarlan
Judith McKenzie
John McLaren
Gerald McLaughlin
Thomas McLaughlin
Deborah McLellan
Charlene McQuarrie
James Mead
Lee Meister
John Mellen
Mark Meredith
Matthew Mero
Christina Meserve
Christopher Metz
Janet Meurs
Margaret Millard
David Miller
Norma Miller
Pamela Miller
Steven Miller
Michael Mills
Ralph Minor, Jr.
Martha Mistretta
Laurie Moody
Steven Moore
Roland Morris
Diane Morton
Allen Moser
Jeremy Moser
Sarah Moser
Susan Moser
Judith Mosier
Susan Moyer

Pablo Schugurensky
Douglas Schuler
Mark Sciscenti
Susan Scott
William Scott
Kathy Seovel-Rodrique
James Seekins
Thomas Shackle
Mary Shacter
Robert Shannon
Devi Sharp
Edward Sharp
Marjorie Shavlik
Chuck Shelton
Suzanne Shelton
Mary Sherman
James Shiflett
Judith Shoshana
Deborah Shulke
Robert Shumate
Andrea Siani
Sergio Siani
Marla Siegler
Gillian Siegrist
Rebecca Sievers
Mikael Sikora
Linda Silber
Janet Silliman
Christiane Silverthorne
Michael Simmons
Janet Simons
Glenn Simonsen
Richard Simonson, Jr
Connie Sinclair
Richard Skadan
James Skutt
Jack Slagle
Roo Slagle
Paul Slate
Susan Slate
Willene Smith
David Smullin
Margaret Snyder
Susan Snyder
Mark Souder
Susan Southwick
Danny Spearman
Patricia Spears
Mary Speelman
Peter Speer
Wendy Squires
Sue Stadler
Richard Staehli
Loy Stafimil
Sue Staggs
Martin Staley
Joyce Stancioff
Annette Standifur
Andrew Stebbins
Carla Stehr
Janet Stein
Cheryl Stephani
Charles Stephens
Jonathan Stephens
Nancy Stevens
Diana Stobart
Sarah Stockwell
Anne Stone
Daphne Stone
Janet Stonington
Sarah Stranahan
Jeffery Strauss
Conni Strophe
Kaye Sullivan
Craig Swanson

T
Sandra Tarzan
Stephen Tarzan
Marcus Teters
Dorothy Tenkhoff
Richard Thacker
Amy Thayer
Kathleen Theoe
Ann Thomas
Tyronne Thomas
David Thomson
Valerie Thorson
Kris Thorsos
Robert Tidland
Daniel Tolfree
Jamie Tolfree
William Tomlinson
Joseph Tougas
Jeff Traugott
Jeanne Tribe
Anne Turner

U
Maillian Uphaus

V
Laura Van Dilla
Doris Tandenberg
Jeanne Vanderiet
Martine Vanpee
Andrea Varcalli
Elizabeth Vargas
Lewis Vaughan
Richard Veach
Alan Venning
Mark Vestrich
Winston Vidor
Diane Vosick

W
Warren Waldorf
Petrina Walker
Renee Wallis
Linda Walsh
Gregory Ware
Janet Ware
Carole Warner
Sherry Warren
Nancy Warshaw
Andrew Wasserman
Hugh Watson
Malta Watt
Kathleen Waugh
Robert Webber
Stephen Webster
Richard Weeks
Karen Weingarth
Gerald Weishaar

Sheri Wertheimer
Margaret Wharton
Frances Wilk
Patricia Wilkins
Ronald Wilkinson
Edward Willert
Richard Williams, Jr
Charles Williams
David Williams
Debbie Williams
Donna Williams
Elizabeth Williams
Patrick Williams
Steven Willis
Hazel Willmarth
Colleen Wine
Betsy Wolf
Carl Wolfhagen
Sanford Wolgel
Nina Wolsk
Paula Wong
Carla Wood
George Wood
Janice Wood
Annette Woolsey
Theresa Wright
Karen Wynkoop

Y
Kathy Ybarra

Elizabeth Blades
Charles and Janis Blair
Marianne Blake
Gerald and Patricia Blakley
Thomas Bomas and Donna Blanton
Fowler and Norma Blauvelt
Faith Bleasdale
Sherrill Boardman
Larry and Mary Boatwright
Jean Bolton
Oscar Bonnevie
Jeanne Bonyng
Frances and Jack Bookey
Mr. and Mrs. William Bowen
John and Gay Bowles
Mary and Lloyd Brandt
Robert and Carol Brenna
James and Kathleen Brewster
Henry and Barbara Brockhaus
George and Dorothy Brodmerkel
Stephen Brozovich
Wilma Bucci
Robert and Odile Buchanan
James and Judy Buddenbaum
Thomas and Joan Buell, Jr.
Nathan and Irene Buitenkant
Harlan and Karen Bunnell
Victor and Mary Burdo

George and Susan Dimitroff
James Dinerman
George and Mary Dolan
Patricia Douglas
Gail Drillings
James and Rachel Dudek
Richard and Mary Dunlap
Jude and Vicki Duvernay
Dale and Edith Dubay

E
Alfred and Ingrid Eckersberg
Karl and Nancy Eikeberg
Robert and Ingrid Eisenman
Dr. Victor Eisner
Richard and Rose Elway
Margaret Enderlein
Andrea English
Frederic and Linda Engstrom
Donald and Susan Enright
Jane Espy
Duane and Nada Estes
John and Gloria Evans
Bernie and Richard Everson

F
Clayton and Janet Fair
Robert and Gerry Faley
Steven and Norma Fameli
Ruth Farber
Thomas and Marjorie Farrell

Linda Goldberg
Ruth and Robert Goldman
Arthur and Ann Gorai
Ann and David Gordon
Dorothy Gordon
John and Adele Gorham
Sylvia Gorsline
Richard and Mary Gowell
Dorothy Graeff
Frank and Virginia Green
Robert and Rose Green
Alfred and Adele Greenberg
Sanford and Inez Greenberg
Harry and Rosemary Gregg
Glen Greisz
Marilyn Gresseth
Dorothy Griffin
Patricia Griffith
William and Bertha Groves
David and Lois Gruber
James Grutz

H
Kenneth Haan
James and Susan Haley
Milton Hamlin
Ronald and Barbara Hammond
Thurston and Carolyn Handley
Carol Hannum
Ernest Harburg

Donald and Jacqueline Johnson
Henry and Lesley Johnson
John Johnson
Wilbur and Virginia Johnson
Theodore and Darlene Johnsrude
Jane Johnston
Ruth Jokinen
Jo Anne Jones
Albert and Gloria Jordan
Margaret Joyce
Henry Judd

K
Ludlow and Norma Kaeser
H. and Margaret Kaltenthaler
Marion Karecki
Julia Kassens
Mildred Katz
Marion Kaufman
James and Marilyn Kavanaugh
Marion and Dorothy Kennedy
Pay and John Keogh, Jr.
Inez Kertson
Lawrence and Darlene Kerwin
Veselin and Lydia Kesich
W and Wilma Kidwell
Joseph and Gail Kiefer
Jerry and Dona King
Raymond and Eula Kirby
Arthur and Melva Kirkbride
Joan Kirshner
Donna and William Kiskaddon
James Kittrick
Norman and Harriet Klein
H. Klopfenstein
Paul and Nancy Klotz
Gerald and Claudia Knutson
Lowell and Shirley Knutson
Wayne and Louise Knutson
Charles Koch
Ayako and Joseph Koczur, Sr
Mitsuhiro and Lilly Kodama
John (Bud) Koons
George and Ruby Koppelman
Henry and Carmen Korn
Walter and Audrey Kosman
Robert and Jean Kramer
Nava and Elbart Krieger
Mascha Kushner

Evergreen Foundation Scholars Named

Cause for celebration is the annual announcement of the recipients of Foundation Scholarships, made possible by the Evergreen Fund. Forty-five students have been selected as Foundation Scholars, for which they will receive full tuition for the 1988-89 academic year (one quarter for graduate student recipients). The Scholarships are awarded on the basis of students' superior academic achievement and contributions in the arts, community activities, leadership and athletics.

Sarah J. Batchelder
Montclair High School
Montclair, New Jersey

Christopher R. Branch
Wenatchee Valley Community College
Wenatchee, Washington

Courtney Boatmen
Oregon Episcopal High School
Portland, Oregon

Linda D. Canfield
South Puget Sound Community College
Olympia, Washington

Robin L. Cline
University of Washington
Seattle, Washington

Daniel Christensen
Wenatchee Valley Community College
Wenatchee, Washington

John Dempsey
Spanaway High School
Spanaway, Washington

Julie Ann Douglas
Rhode College
Memphis, Tennessee

Jerry Fernandez
University of Washington
Seattle, Washington

Todd Field
Indiana University

Thomas Mitchell Freeman
Seattle Central Community College
Seattle, Washington

Caitlin Hahn
Mendocino High School
Port Angeles, Washington

Jennifer Helpenstell
Port Angeles, Washington

Adrienne Julius
Hoquiam High School
Hoquiam, Washington

Jessica Kelso
Olympia High School

Lucy Key
Green River Community College
Sumner, Washington

Vince LaLonde
Seattle Community College
Seattle, Washington

Scott Leo
Pe Ell High School
Pe Ell, Washington

Emily A. Licastro
South Whidbey High School
Langley, Washington

Hanna Luther
Green River Community College
Auburn, Washington

Donna Michane Lona
Seattle, Washington

Kirk Edwin Miller
Tahoma Senior High School
Tacoma, Washington

Michelle Minstrell
Mercer Island High School
Mercer Island, Washington

Roxann Mulvey
University of Washington
Seattle, Washington

David Gunnar Nyberg
Urban School of San Francisco
San Francisco, California

Susan Prichard
Oak Harbor High School
Oak Harbor, Washington

Erik J. Ray
Reed College
Portland, Oregon

Kristine A. Reese
Tacoma Community College
Tacoma, Washington

Kirsten Roberts
J.R. Rogers High School
Puyallup, Washington

Leanne C. Roberts
Middlesex High School
Middlesex, New Jersey

Shannon Ross
Broad Ripple High School
Indianapolis, Indiana

Susan Searles
Naches Valley High School
Naches, Washington

Sheilah G. Seymour
Peninsula College
Port Angeles, Washington

Lee Ellen Shoemaker
Arlington High School
Arlington, Washington

Melissa Stanley
Foster High School
Seattle, Washington

Patricia Swanson
Pierce Community College
Tacoma, Washington

Celeste Thompson
Pennsylvania Community College

James Wallace
Portland Community College
Portland, Oregon

Anthony Waters
North Seattle Community College
Seattle, Washington

Sandra L. Weber
Shorewood High School
Seattle, Washington

MES and MPA Graduate Scholarship Recipients:

Bonnie K. Long

Margaret "Peggy" Britt

Lauri W. Anderson

Eric Seabloom

Julie Smith

Rose and Donald Lacina

Edie Lackland

James and Barbara Ladd

Thomas and Evelyn Lajiness

Jerry and Geraldine Larrance

Florence and S. Lasswell

Heather Leach

Kathleen Learned

Anna Leas

B. and Carista Leathers

Louis and Joan Lepry

Norman and Louise Levy

H. Lewis

Leroy and Carolyn Lewis

Joseph and Corinne Linesch

James and Helen Linger

Ivan Lipman

Eugene and Pearl Lipner

Peter and Anna Littlewood

Paul and Rose Livingston

Herbert and Ellen Loewenthal

Robert Loftfield

Marvin and Nancy Loftness

John and Evelyn Loftus

C. London

E. Love

Robert and Norma Lucas

Ernest and Paula Luders

Luther and Patricia Lund

J. Lundry

Frank and Patricia Lussier

John and Edna Lyons

Jo and William Lysak

Thomas Yesberger
Geoffrey Young
Mary Youngman
Arbin Yu
Marjorie Yung

Z
Vicki Zarrell
Dolores Zschomler

Parents

A
David and Ilene Adams
Dale and Jenene Alberda
Eugene and Marilyn Alexander
Steven and Rose Alfred
Durwood and Doris Alkire
Cecil and Doris Allen
Grace Allen
Robert and Marjory Alper
Clifford and Charlotte Alterman
Barbara Altman
Theodore and Gertrude Altonen
Earl and Janice Anderson
Thomas Armstrong
Anthony and Ruth Arnold
William and Helen Aron
William and Shirley Ashby
Walter and Jeanne Atkinson

B
David and Mary Ann Bader
Ralph and Jean Baierlein
Martha Bailey
Franklin and Mary Balch
Elizabeth Balderston
Joseph Balogh
Phillips and Eva Barker
Mary and Joseph Bartek
William Bartlett
J.F. and Hazel Beatty
Duane Beck
Robert and Nancy Becker
Dery and Barbara Bennett
William Benoist Jr.
Marta Berg
Leonard Berger
Abraham Bergman
Arthur Berlin
Anita Bierdermann

Brian and Danielle Butz
Eleanor Butz
John and Heather Byrne

C
James Lila Cammack
Ellen and Charles Campbell, Sr.
Marilyn Canaris
Glen and Jean Carey
Mr. and Mrs. James Carey
John Carr
Hamilton and Margaret Carson
Wayne and Audrey Cassatt, Jr
Johnny and Carol Castelletto
Yvonne and Edward Cazier, Jr
Rebecca and Pete Caitin
James and Addis Chapman
David and Betty Christianson
Atlee and Mary Clapp
Raymond and Alice Clark
Stephen Clark
Frederick and Jessie Cohen
Joy and Marilyn Colon
Eugene and Jeanne Commerford
Michael and Linda Cook
Errol and Cissy Copilevitz
Cathy Corballis
Thomas and Sandra Cox
Marion Creveling
Larry Crouse
Gordon and Sheila Currie

D
Dr. and Mrs. Carroll Damron
Albert and Charlotte Dangler
Curtis and Britt Danielson
David Brownwood Charitable Foundation
Donald and Cherie Davidson
Marilyn and John Davis, III
Dorothy Davis
Robert Davis
Dr. and Mrs. Don Debra
Ruth and Harold Deery
Dr. and Mrs. Harold Dehaven
Americo and Janice Del Calzo
Charles and Mary Dethier
Pete and Elsie Devries
Robert and Genevieve DeWeese
Jeno and Judith Dibuz

Mr. and Mrs. W. Fawcett
Mary Feldman
Don Fincke
Myron and Elka Fink
David and Nancy Finkelstein
Louis and Elena Fischer
Louis Fiset
William and Adele Fletcher
Gladys and Billy Fogg
James and Ann Fontaine
Donald and Susan Forsling
Patricia Frank
Paul and Genevieve Frankenberg
Donna Franklin
Ralph and Mary Franklin
Karen and Timothy Fraser
Gene and Margaret Frazier
Sharon Frazzini
Alan and Kathleen Freeman
Donald and Elizabeth Freeman
Marc and Lorna Freshwater
Norma Fried
August and Jeanne Fromuth
Herbert and Carol Fuller
William Fuller
Jean Fulton
Anne Futterman

G
Ann and Lee Gagnon
John and Betty Gallagher
Bernard and Constance Garnes
James and Velma Garrison
Roland and Gundrun Gary
Thomas and Theresa Gaston
Robert and Sandra Gates
Ann Gavell
Jean Gaznier
Keith and Sara Gehr
Arthur and Barbara Geller
Alice Gendell
Warren and Gerry Ghormley
Dorothy Gibson
Marilyn Gillette
Gordon and Doris Gilan
Richard and Katherine Gilpin
George and Lila Girvin
Salvatore and Joan Giusti
Waldo and Shirley Goglin
Alvin and Judy Goldberg

Elizabeth Hardisty
Frank Hartman
James and Ruth Hasegawa
Robert and Edna Hauser
Dorothy Heal
Thomas and Kathy Healy
Reuben and Mary Held
Jean and John Hennessey, Jr.
Susan Hennie
Gertrude and James Herbert
Susan Herman
George Hernandez
Kathleen Hernandez
John and Jackie Herum
Richard Hesik
Roger and Nancy Hibbing
Clark and Cynthia Hilden
Robert and Sharon Hilgenberg
Raymond and Katherine Hill
Richard and Joan Hill
Robert and Dagmara Hill
Elizabeth Hirshman
Joseph and Lois Hogan
Marion Hogan
Nicola Hohn
Susan Holland-Schafer
David and Sarah Hollier
Richard and Jacqueline Holmes
Ferenc and Betty Holonics
Martin and Mary Holt
Thomas and Frances Hopkins
Thomas Hornbein
Richard and Christine Horner
Michael Hosterman
Thomas Hudson, Jr.
William and Marion Hunt
Francis and Wilhelmina Hunter

I
Mr. and Mrs. Arthur Ingersoll
Cecile Isaacs
Mary and Joseph Iski
Donald and Helen Ivey

J
David and Rose Jacobs
Michael and Virginia Jameson
Louis and Theresa Jeannot
William and Paula John
Don and Liby Johnson

M
Michael and Cynthia Mack
Carolyn and Steven Mackey
James and Nancy MacWhimney
Robert and Roberta Mahler
Rona and Harvey Malofsky
Emily and Leonard Mendelbaum
A. and Nancy Manseth
Barbara and Elliot Marple
Timothy and Margaret Marshall
Clyde and Patricia Matteson
Charles and Miriam Matthews
Mr. and Mrs. Richard May, Jr.
Kinnie McCabe
Ernest McCall
Anne and Andrew McThenia, Jr.
Charles and Barbara McCann
Beale and Dana McCulloch
David and Nell McDonald
James and Jacqueline McFerran
Mr. and Mrs. Edward McGrath
Donald and Hilda McLaren
Barbara McLaughlin
Peter and Shirlee Meador
Marilyn Meardon
David and Joanne Mehus
Gordon and Greta Meiklejohn
Mr. and Mrs. Walter Mellen
David and Penelope Merrel
Deena and Ray Mersky
Frank and Bettimae Metheny
Franklin and Jean Michaels
John Mildenberger
Stanley and Elouise Millar
Daniel and Isabel Miller
James and Florence Miller
Melvin and Roberta Miller
Robert Miller
Arnold and Ann Millhauser
John and Katharine Mills
Robert and Elizabeth Mills
Henry and Eulia Mishima
Marvin and Constance Mooney
Marda Moore
William and Joan Morgenstern
Peter and Anna Morton
Lewis and Mabel Mosier
Marlene Moubry
Margaret Moulton

James and Kathleen Mountjoy
Terry Mulcany
Murray Murphey
Frank and Carolyn Murphy
Robert and Mary Murphy
Robert and Shirley Murvihill
Robert Musser
Robert Myhr
Vreni and Barbara Maess

Barry and Indra Remsberg
Dale and Elaine Reynolds
Leah Rice
Charles and Kathleen Richardson
Joyce Robertson
Angela Robinson
Donald and Margaret Robinson
Richard Rodrigues, Sr
Israel and Betsy Gail Rosen

Shirley Sainsbury
Irwin and Marion Saltzman
Evelyn Salzer
Oscar and Lois Sandberg
Valri and Lester Sandoe, Jr.
David and Marcella Scales
James and Prudence Scarritt
William and Annette Schaefer
Brian and Linda Scheffer

William and Joan Scott
Russell and Joyce Sears
J. Marvin and Carol Seemann
Milton and Betty Seidman
Lester and Harriet Servid
David and Sarah Shames
Robert Sannon
Edward Sharp
Albert and Ethel Shepard

Maxine Sitts
Jay and Ellen Sklar
Ron and Patricia Slabaugh
Albert and Carib Smallman
Alice Smith
Ralph and Adele Smith
Warner and Lorna Sneed
John and Florience Sniado
Ernest Sokal

Mr. and Mrs. Stephen Stephens
John and Ellen Stephenson
Robert and Ruth Stewart
Robert and Helen Stierhoff
Walter and Anita Stolov
Michael and Annelore Stone
Bruno and Inge Strauss
Phyllis Sturges
Warren and Norma Styner
John and Dorothy Swanberg
Richard and Patsy Swindler
Elizabeth and Edwin Sykes, Jr.

N
Robert Nassau
William and Magdaline Nearn
John and Barbara Neff
Barbara Nelson
Evelyn Nelson
James and Katherine Nelson
Leonard and Bonita Nelson
Tim and Mary Newcomb
Betty Newell
Doris and Marvin Newman
Harry and Joy Newman
James and Mieko Nhom
Mary Nichols
Chris and Helen Nicholson
Donald and Hilda Nicoll
Richard and Mary Nolting
Howard and Barbara Norris
Amando and Ventura Nunez

O
Nichael O'Brien, Jr.
Bernard and Jeanne O'Connor
Allen and Harriet Oakley
Jay and Dorothy Odell
Michiko Ogasawara
John and Elise Olds
Arne and Jo Olson
Warren and Maurine Olson
Richard and Patricia Oltman
Peter and Mary Onno
Catherine Ormand
Robert and Mary Ornbeg
Francis and Teruko Ostrom
Gary and Carolyn Owen
Martyn and Candace Owen

P
William Page
Hamilton and Muriel Page
Lloyd and Constance Painter
Mark and Linda Papworth
Lowell and Anna Park
John and Nancy Parker
June Parker
Glenn and Leslie Paxton
Russell and Lois Pearson
Peter and Christine Pell
James and Connie Pemble
Shirlee and James Perkins
Mr. and Mrs. Arthur Peroni
Dennis and Regina Peters
Arthur and Idella Peterson
Rosemary Peterson
Glenn and Betty Pfaff
Dr. and Mrs. Harold Phelps
Byron and Joanna Pinick
Lynn and Marianne Pless
Paul and Cecilia Plumer
Raymond and Marilyn Pollard
Joan Poultridge
K. and Joan Powers
Edward and Anne Praczukowski
Ivan and Roberta Preston
Paul and Mary Pruitt
Carolyn Purser

Q
Philip and Barbara Quinn
R
George Rainville
Leland and Betty Ramsey
Irving and Shirley Rappaport
Doug and Sara Rasmussen
Rance Ratliff
Robert and Virginia Ray
F and Ann Reading
Howard and Verna Reagan
Robert and Mildred Reed
David and Enid Reese
Robert and Tish Reeves
Carroll and Elnor Reid
Paul and Jane Reid
David and Dorothea Reinthal

Levers That Move The World— Words from a Foundation Scholar

"What a joy diversity is," writes Freshman **Jessica Kelso**, a 1988 Foundation Scholar. The Olympia native has experienced that joy first-hand through student exchange programs in Brazil and India. The following excerpts are from her letter of application to the Foundation.

Dear Committee,
"About ten years ago, (when) my dad and I took a walk through our neighborhood. . . a tall man in a bulky sweater with a backpack approached us and smiled. We. . . listened to some jumbled syllables in his attempt to ask directions to the bus station. After giving him directions, the man shook my dad's hand heartily, patted my cheek and walked away.

"This scene. . . rooted itself in my memory. It was the first time I was conscious of the presence of foreigners. Now, ten years later, I myself have been a stranger in strange lands. Through my experiences, I've come to the conclusion that too many people view the global community in much the same way a seven-year-old does. . . as a place of political, social and economic boundaries between the peoples of the world.

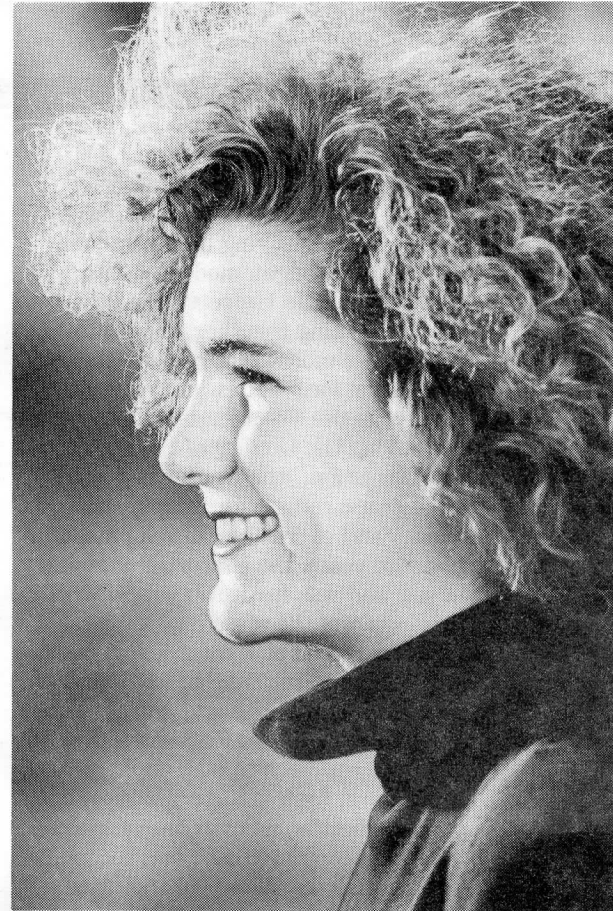
"I began reaching out to the world by. . . writing to pen pals in Europe, Africa and Asia, doing class projects on foreign affairs and trying to learn Italian from a cookbook. My interest escalated to include foreign language clubs, hosting a French exchange student and becoming a Rotary International Exchange Student in Brazil.

"Living in Brazil for a year offered me the chance. . . to live as if I were Brazilian. The excitement came from *not knowing*. I didn't know how to act and react among people; I didn't know Portuguese or the standards of their culture. But I learned—sometimes quickly, sometimes more gradually. I came to appreciate differences and similarities, and developed a strong desire to experience more of the world.

Philip and Marianne Ross
Frank and Sabina Rotecki
Marjorie Rowe
Lawrence and Ivern Rubida
David and Joanne Rudo

S
John and Margaret Saari
Lloyd and Norma Sabini
Pat and Virginia Sainsbury

John and Joan Schick
Marg and Gerry Schiele
Lillian Schiendelman
Robert and Shirley Schlorff
Calvin and Alice Schmitt
Robert and Dolores Schuh
Dolores Shuna
Rudy and Winona Schuver
Walter Schwindt
Gerald and Patsi Scofield



Kelso

"Through my experiences, I have learned how to learn. . . I look forward to attending Evergreen, because it's been an important, exciting part of my life. My mother worked on her master's degree at Evergreen. When I was in the seventh grade I learned algebra on one of your computers. In Brazil I used (faculty member) **Pete Sinclair's** journal-writing format.

"Evergreen offers programs that encompass the education I want to pursue—communications, politics, economics and language. Evergreen will help me develop a way to promote my conviction that as a global community we can create a more peaceful, plentiful and pleasing world."

(Kelso closes with the following quote:) "Experience, energy and invincible determination with the right motive are the levers that move the world."
—Noah Porter

Charles and Dorothy Shephard
George and Clara Shinn
Larry Short
Eugene and Jean Shultz
Stuart and Frances Shumway
Gary and Marlea Shurtleff
Gary and Diane Sieber
Gillian Siegrist
Warren and Virginia Simms
Orin and Dorothy Simonsen

Robert and Helen Solinger
Amigo and Mildred Soriano
Kay Sparks
Tania and Tobben Spurkland
Virginia Staggs
William and Carolyn Staley
William and Linda Stanley
Ivan and Michalea Starke
Jerry and Billie Steiert
Joel and Mary Stein

T
Rosa Tatz
Frank Webb and Charlotte Taylor
Joseph and Sylvia Taylor
William and Joan Taylor
Jessie Tetlow
William and Mary Ann Thebus
James and Glenda Thistle
Kenneth and Joan Thompson
Givens and Barbara Thornton
Jim and Phyllis Titterington
Wing Tom
Irwin Touster
Eleanor Townsend
Samuel and Julie-Ann Traub
Ranger and Dolores Travis
Robert and Mary Lou Treat
Duane and Judy Trefethen
Paul and Shirley Trexel
John and Sally Trzil
Forrest and Dorothy Tucker
John Turner

U
Joseph and Coreene Underwood
Jolene Unsoeld

V
Wilber Van Pelt
Wade and Shirley Vaughn
Denis and Judith Versweyeld
Gunars and Ieva Veveris
Anne Vickery
Mark and Wendy Visconty

W
Gunter and Lucile Waehling
Roger Wagoner
Barbara Waldow
Helmut and Lois Wallenfels
George and Christine Walsh
Frank and Joyce Warner
Neil Waterman
James and Susan Watson
Theodore and Donna Weeks
Ursel Weinman
Charles and Claire Weller
Robert and Louisa Wells
Estelle Wertheimer
Frank and Jan Wetzel
Joseph and Merida Wexler
Dorcas Wheaton
Sheryl White
Lois Will
Thomas and Judith Willging
Robert and Betty Williams
Janet and Joseph Williamson
Dwight and Donna Williamson
Robert and Judy Wilson
Irmgard and Herbert Wimberger
Ken and Kathleen Winkley
Robert and Joyce Winsor
Charles and Jane Wiseman
Daniel and Judith Witmer
James and Nancy Wolcott
David and Libby Wolf
Russell and Rebecca Wolfe
Kar-Ellen Wollam
Roger and Donna Wolthuis
Richard and May Wong
Richard and Jo Wright, III
John and Winifred Wright

Y
Barbara Yanick
George and Carol Yarbrough
Ted and Ruth Yoshino
Frank and Marilyn Youngman, Jr
Byron and Bernice Youtz
Z
Sidney and Rosemary Zwick

Info Central

Anything in this issue whet your appetite for more? The following materials provided the basis for, or informed, *ReView* stories:

- ▶ The full-length article by Barbara Leigh Smith which is excerpted on the next page
- ▶ Centennial Scholars Speakers Bureau guide (see next page)
- ▶ Annual update and fact sheet of the National Faculty for Humanities, Arts and Sciences (see page three)
- ▶ Limited copies of Matt Groening's profile (see page six)

If you are interested in any of these publications, call Information Services, (206) 866-6000, ext. 6128, or write Info Central, Library 3121, The Evergreen State College, Olympia, Washington 98505. Please request the piece you want by title and wait three weeks for delivery.

Greeners, get cookin'—*The Greener Cookbook*, to be published this winter, is looking for students, teachers, staff and alumni who are willing to share their favorite recipes, or essays and illustrations, dealing with food and nutrition. Send your contribution to current student **Dan McGrady**, editor, I-309, TESC, Olympia, WA 98505. Include some information about yourself and the reason for your selection(s). Your submissions cannot be returned but you will be given full credit for your creation, if it's published. Goody Duck Press, publisher of this enterprise, is not affiliated with The Evergreen State College or the state of Washington. Deadline is January 1, 1989.

Writers, let it rip—calling all poets, photographers, illustrators, essayists and writers of fiction: *Slightly West*, Evergreen's literary quarterly is accepting submissions for its winter edition through December 9. Address correspondence to Coordinator **Paul Kimball**, CAB 305, The Evergreen State College. Submissions will not be returned.

You Here?

If you gave between July 1, 1987 and June 30, 1988, and your name has been left off the Honor Roll or listed incorrectly, we would appreciate hearing from you. Let us know by writing to the Evergreen Fund, Library 3114, The Evergreen State College, Olympia, Washington 98505, or by giving us a call at (206) 866-6000, ext. 6565.

The Evergreen ReView

Editing: Mark Clemens, Keith Eisner

Graphic Design: Mary Geraci, Marianne Kawaguchi

Writing: Mark Clemens, Kate Crowe, Keith Eisner, Karen Huntsberger, Jim Mateson, Kitty Parker, Barbara Leigh Smith, Val Thorson, Mike Wark, Forrest Wilcox

Photography: Steve Davis, Sue Hirst, Chris Nelson, TESC Photo Services

Typesetting: Shirley Greene

Illustrations: Bilbo

Other help: Dale Baird, Patricia Barte, Don Chalmers, Ellie Dornan, Vern Quinton, Larry Stenberg
Peoples of Washington photographs: (Cover) Grandmother Koua Moua with Grandson Dang Moua at Laotian New Year's celebration, Seattle, 1981, photo by Greg Gilbert, courtesy of *The Seattle Times*; (top, pages 8 and 9) Bay City Lumber Co., South Aberdeen, ca. 1919, courtesy of Michael Tesia, Bronco's Liberty Tavern Historical Museum; (page 8) Kathy and Isaac Shultz-Reyes, Mexican folk dance performance at Seattle Central Community College, 1984, photo by Gilbert W. Arias, courtesy of The Concilio for the Spanish Speaking. Thank you.

MARY GERACI
SE4124

Published by Information Services and Publications
The Evergreen State College
Olympia, WA 98505

A Grass-Roots Approach to Improving Education

By Barbara Leigh Smith
Academic Dean, The Evergreen State College

Smith



We thank Academic Dean **Barbara Smith** for the following excerpt from "The Washington Center: A Grass-Roots Approach to Faculty Development and Curricular Reform," which appeared in the October issue of *To Improve The Academy*. Smith, a founder of the Washington Center, currently serves as its director.

We encourage submission of articles, opinion pieces and literary efforts for possible publication in the *ReView's* guest column. Please address inquiries and entries to Mark Clemens, Editor, Information Services, LIB 3122, The Evergreen State College, Olympia, Washington 98505.

Four years ago, an effort began in Washington state that dramatically altered perceptions of revitalizing faculty and improving undergraduate education. It began modestly with two colleges (Seattle University and Evergreen) working together; their efforts produced a model that became the foundation for a statewide consortium. Known as the "Washington Center for Improving the Quality of Undergraduate Education," the Center is a small-scale, grass-roots effort emphasizing faculty and curriculum development. In just two years, the consortium tripled in size and was institutionalized with funding from the state legislature. Headquartered at Evergreen, it now serves 35 institutions, both public and independent colleges and universities.

Two closely linked features define the Center's approach to educational improvement: first, structural alteration of the educational environment into "learning communities"; and second, faculty exchanges into collaborative teaching situations.

A variety of curricular models are being piloted. The model most typically used by Center institutions replicates Evergreen's curricular approach. Instead of taking a series of disciplinary courses, students enroll in an intensive interdisciplinary program for one or more quarters. This single program is the "full load" for both the faculty and students. The program typically enrolls 70-80 students; three or four faculty plan and teach the program together.

The emphasis in these programs is on developing students' analytical and synoptic skills and their capacity to deal with complex issues from a multi-disciplinary point of view.

The Washington Center also acts as a statewide broker for inter-institutional faculty exchanges. Unlike most faculty exchange programs, this program complements and extends curricular

reform by placing exchange faculty, wherever possible, into team-teaching situations in new model programs.

Teams often include one faculty member from another institution, one veteran from a previous learning community program, and two newcomers to collaborative teaching. Many of the institutions rotate faculty members through the programs to broaden the impact on the institution, but a balance of newcomers and relatively experienced faculty members is also important to the programs' success. By June 1989, we estimate that more than 160 faculty in a dozen institutions will have participated in the faculty exchange program.

Many faculty members report an initial sense of anxiety about entering a new institution. Teaching in front of ones' colleagues is also disquieting at first, but most participants quickly find that team teaching provides an important social and intellectual base from which to experience the new community. Exchange faculty say it is an enormously important learning experience for them, often more stimulating than a sabbatical. Most leave the exchange relationship with a new sense that there is, in fact, one educational community with many shared interests.

Collaborative teaching can be powerful in bringing people together who were previously only passing acquaintances. Faculty report that the experience substantially alters their patterns of collegial interaction and gives them an enhanced sense of camaraderie and respect for one another. These new efforts are also powerful in building new rapport between faculty and administrators.

Faculty exchanges and collaborative teaching provide important opportunities for "re-framing" simply by altering the routine work environment and social relations in substantial ways. The social context is dramatically re-

defined and new conceptions of educational community are born. Collaborative teaching, especially across institutional boundaries, disrupts old patterns and expectations. It presents genuine puzzles and new surprises.

Our experience compels us to also think more broadly about leadership. When colleges think of leadership, it is usually in terms of administrative leadership and in a single institutional setting. We seldom think in terms of leadership in the classroom. We almost never think of it across institutions. Team teaching gives faculty the opportunity to serve as mentors and leaders in the most useful possible place—the classroom itself.

The new model curricula put faculty totally in charge of their teaching, in terms of both content and structure. They are jointly empowered to create something new that is substantively and pedagogically sound and stimulating. Designing and delivering this curriculum entails risk taking, and it is public and collegial. A more emergent curriculum can perhaps be fully appreciated only when contrasted with the redundancy of much college teaching, the isolation many faculty feel, and the bureaucratization that has undermined people's sense of personal power and community.

This model offers a promising and relatively low-cost approach to faculty revitalization and curricular reform. It has opened up a productive dialogue about education among our institutions. The Washington Center has done this by operating from the assumption that, despite our differences, we are one educational community with many overlapping concerns, that we can make substantial accomplishments together that we cannot make alone, and that small scale, grass-roots and collaborative approaches are the best places to begin.

Higher Ed Speaks: Happy B-day, Washington!

As a 100th birthday gift to Washington, 22 institutions of higher education in the state are offering the services of more than 90 of their faculty members through the Centennial Scholars Speakers Bureau. Participants include all six of the public four-year institutions, 12 of the 27 community colleges, and four independent institutions.

Evergreen's five Centennial Scholars are faculty members **Kenneth Dolbeare, Pat Labine, Russell Lidman, Thomas Rainey and Sid White.**

Dolbeare will speak on a wide range of economic and political topics about Washington, while Labine's talk is about the art and science of organic farming. Lidman's talk, "The World of Our Grandparents: Washington in the 1890s," dwells on ways people then made their living; while Rainey will give oratorical renditions of pioneer figures of the Washington territory. Sid White will talk about the cultures of



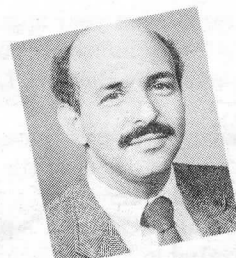
Washington and their artistic contributions (see pages 8 and 9).

The Centennial Scholars Speakers Bureau has already begun booking engagements, which are free of charge, with civic organizations and community groups around the state. The Scholars' availability coincides with the State Centennial, which climaxes November 11, 1989. Evergreen's

Scholars will speak anywhere west of the Cascades.

A guide describing Centennial Scholars and their talks is available upon request. Call the institution of higher education nearest you and ask for their Centennial Speakers contact person, or call **Pat Barte** at Evergreen, (206) 866-6000, ext. 6128, for a copy of the guide.

Centennial Scholar Pat Labine and student Mark Koch mull the mulch at Evergreen's Organic Farm.

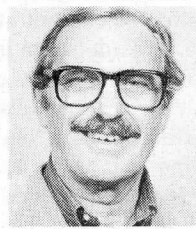


Dolbeare

Lidman



Rainey



White