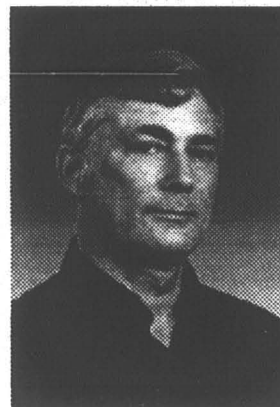


Briefs

Faculty member died



Long-time Evergreen faculty Don Finkel died early Thursday morning from lymphoma cancer.

Finkel began teaching programs at Evergreen in 1975 with an emphasis in philosophy and psychology. He is known to the community as a "master teacher" because of his workshop approach to teaching.

Finkel was 57-years-old when he died and left a legacy behind for his wife and three children with a newly published book titled "Teaching with Your Mouth Shut."

A memorial service for Finkel will be held at the Long House on Sept. 22. The service begins at 11 a.m..

Parsons organizes transportation

\$5000 has been dolled out to the Commute Trip Reduction Committee (CTR). The state grant will pay for ride sharing parking for Evergreen faculty and full time staff.

CTR gets money (state grant, 5000) for faculty and full time staff. If faculty ride to campus the grant has allowed for a place to shower, a free bus pass for bad weather days and a guaranteed ride home if all else fails.

Students will continue to pay for parking privileges even if they park their VWs full. Sherry Parsons, the CTR coordinator, says that the law calling for alternative transportation in the five most congested counties of the state does not cover students.

Parsons has not left the students out. She secured a refund of \$40,000 from the buss pass initiative to the S&A board. Parsons says she has no control over the money and if the students want something done along the same lines as the TRC they must take it up with the S&A board when it begins meeting.

New crime statistics

Drugs, and beer, and assault, oh my...

Is crime at Evergreen going up? On paper it sure looks that way.

"As far as I'm concerned it's flat, not up or down," said Steve Huntsberry, chief of Police Services.

Indeed, for many years there has been no homicide. But, in 1998 assault shot up by 12 cases. The two years prior to that had no assault cases were filed.

Though categories like burglary, drugs and assault have gone up on paper, Huntsberry said they remain the same in reality.

"We are more aggressive than we use to be. If we see a crime we make the arrest. In the past we were inclined to ask them to leave and not come back."

Huntsberry feels that most of the crime at Evergreen comes from town and is not generated by students.

| Categories* | 1996 | 1997 | 1998 |
|--------------------------------|------|------|------|
| Aggravated Assault | 0 | 0 | 12 |
| Arson | 1 | 2 | 2 |
| Burglary/Breaking and Entering | 7 | 22 | 21 |
| Homicide Offenses | 0 | 0 | 0 |
| Larceny/Theft Offenses | 148 | 175 | 121 |
| Motor Vehicle Theft | 11 | 7 | 4 |
| Robbery | 0 | 3 | 0 |
| Sex Offenses, Forcible | 0 | 0 | 1 |
| Sex Offenses, Non-Forcible | 5 | 5 | 7 |
| Drug Abuse Violations | 17 | 11 | 32 |
| Liquor Law Violations | 2 | 2 | 9 |
| Weapons | 0 | 2 | 1 |

*Crime statistics reported from a brochure sent out to incoming students, "The Evergreen State College Campus Safety and Security Information." All figures provided by Police Services and the Thurston County Sheriff's Office.

ALL-STUDENT

CONVOCATION

Friday, September 24, 1999
2 p.m. in the Longhouse



Twenty-Ninth Academic Year

EVERGREEN

COOPER POINT JOURNAL

CAB 316, The Evergreen State College, Olympia, Washington 98505
Volume 28 • Number 1 September 17, 1999

News

Staff Writers: Is It You?
Staff Photographers: God Knows Who!
Letters & Opinions Editor: Jason Miles
Copy Editors: Ikant Spel
Comics Page Editor: It ain't Groening
Calendar Editor: Keepin' Time
Seepage Editor: Tan-ya Gerrodette
Sports Editor: Busted Knee
Systems Manager: It Won't Print
Layout Editors: Katherine Smith, Whitney Kvasager and Quynh Le
Photo Editor: Aaron Cansler
Features Editor: Jen Blackford
Arts & Entertainment Editor: Datone Guy
Managing Editor: Ashley Shomo
Editor in Chief: Greg Skinner
Business
Business Manager: Carrie Hiner
Assistant Business Manager: Michael Selby
Advertising Representative: Alicia Webber
Ad Designer: Tan-ya Gerrodette
Circulation Manager: Blood Flow
Distribution Manager: Rand McNalley
Ad Proofer: Spy Glass
Advisor: Dianne Conrad

Editorial
866-6000 / x6213

Business
866-6000 / x6054

Advertising
866-6000 / x6054

Subscriptions
866-6000 / x6054

Internet
cpj@evergreen.edu

Friday Forum
Every Friday @ 2 p.m.

© all CPJ contributors retain the copyright for their material printed in these pages

The Cooper Point Journal is published 29 times each academic year on Thursdays when class is in session; every Thursday during Fall quarter and weeks 2 through 10 in Winter and Spring quarters.
The Cooper Point Journal is directed, staffed, written, edited and distributed by the students enrolled at The Evergreen State College, who are solely responsible and liable for the production and content of the newspaper. No agent of the college may infringe upon the press freedom of the Cooper Point Journal or its student staff.
Evergreen's members live under a special set of rights and responsibilities, foremost among which is that of enjoying the freedom to explore ideas and to discuss their explorations in both speech and print. Both institutional and individual censorship are at variance with this basic freedom.
Submissions are due Friday at 4 p.m. prior to publication, and are preferably received on 3.5" diskette in Microsoft Word format. E-mail submissions are also acceptable.
All submissions must have the author's real name and valid telephone number.

Orientation Schedule September 18 - 26, 1999

| Day | 9 | 10 | 11 | 12 | 1 | 2 | 3 | 4 | 5 | 6 | 7 | 8 | 9 | | | |
|----------------------------------|---|----|--|----|---|---|--|---|--|---|---|---|--|--|--|--|
| Saturday 9 • 18 • 99 | Housing Resident Check-in: Housing Community Center (HCC). Please park in Flot | | Orientation Guides Information Table: Library Entrance | | Payment of Tuition and Fees: Cashier's Office Library 1119 | | Student IDs: First floor library lobby; New students may sign-up for College ID card | | Family and Friends Lounge: lower level CAB, meet other Evergreen parents | | Campus Tours: Front of library, every half hour | | Utilities and Services Fair: Red Square | | | |
| | Student and Academic Support Services: learn more about SASS L1400 | | Access services for students with disabilities, Academic advising, career services, First People's advising, KEY student Services SE 2110 | | Health and Counseling Center CAB 320 Student Activities | | Parent to Parent Session: Second floor library, share stories with faculty and other parents | | Resource Interest Sessions: Session 1: 12:45pm - 2pm Session 2: 2pm - 3:15pm | | Evergreen 101: Second floor library lobby; Bring questions regarding life at Evergreen. | | Family and Friends Dinner: (CRC); Welcome dinner for students and families and friends (5pm - 6pm), reservations and advance payment required | | | |
| | Housing Evening Programs: HCC, check with resident assistants for a schedule of evening events | | | | | | | | | | | | | | | |
| Sunday 9 • 19 • 99 | Housing Resident Check-in: Housing Community Center (HCC). Please park in Flot | | Orientation Guides Information Table | | Scholarship and Financial Aid Workshop: Lib. 1316; Provide overview of scholarship resources and searching. | | Orientation Brunch: L4300; Evergreen's Social Contract discussed, faculty panel describe learning communities, advance purchase of tickets for brunch necessary. | | | | | | Housing Evening Programs: HCC, check with resident assistants for a schedule of evening events | | | |
| Monday 9 • 20 • 99 | Evergreen Automated Registration System (EARS) 7a.m. - 7 p.m. | | Student IDs: First floor library | | Walk-in Registration: First floor library | | Payment of Tuition and Fees: Cashier's Office Library 1119 | | Learning Resource Center: L3407 Learn to improve your skills | | Shuttle To Shop: Library loop bus stop | | Downtown Olympia Walking Tours: Library loop bus stop | | | |
| | Student to Student: Cab 110; Informal workshop on student perspectives of Evergreen | | Financial Aid and Credit Management: L2205 | | Library Tours: Second floor library | | Rock Climbing Orientation for Climbing Wall and Indoor Climbing Gym: CRC; Orientation on safety and proper use of rock-climbing equipment | | | | | | | | | |
| Tuesday 9 • 21 • 99 | Evergreen Automated Registration System (EARS) 7a.m. - 7 | | Walk-in Registration: First Floor Library Lobby | | Payment of Tuition and Fees: Cashier's Office, Library 1119 | | Student IDs: First Floor Library Lobby | | Learning Resource Center Open: Library 3407 | | Academic Fair: First, second, and third floor lobbies, library | | Evening Programs: HCC, check with resident assistants for a schedule of evening events | | | |
| | Core Program Previews: Session A 9 a.m. - 10:15 a.m. Session B: 10:30 - noon | | Lecture Hall 3: Alternative Calendars | | Lecture Hall 4: Creativity in the 20th Century | | CAB 110: Exploration | | L1612: Farms in Nature | | Longhouse 1007: The Nature of America | | CAB 108: Risk: Prospects for Technology and Democracy | | Lecture Hall 2: Sacred Places | |
| | Greener Living: Long house, Meet Health/Counseling staff. | | New Student Academic Advising L1612 | | Financial Aid Workshop: L2205 | | | | | | | | | | | |
| Wednesday 9 • 22 • 99 | Evergreen Automated Registration System (EARS) 7a.m. - 7 | | Walk-in Registration: First Floor Library Lobby | | Payment of Tuition and Fees: Cashier's Office, L1119; FULL TUITION IS DUE BY 3:45 P.M. | | Student IDs: First Floor Library Lobby | | Computer Center Lab: L2408 | | Courage to Learn: L4300, 3 day seminar, advance registration | | Learning Resource Center Open | | Disability Services for New Students: What's It All About? L2205; Disability Services share hot to receive services, the difference between high school and college accommodations, how to ask for accommodations, as well as help you understand your rights and responsibilities as a college student with a disability. | |
| | Skin Deep: Student Perceptions on Race and Building Allies: CAB 110; award-winning film, chronicles the journey of students as they examine their attitudes and feelings about race; discussion exploring ways to respect and support one another and build strong alliances will commence at 10:15 | | Seminar Saavy for Freshmen: Library 1600; Faculty facilitators share tips on participate in a meaningful way, and get the most out of seminar. A short article or story will be distributed and discussed. | | Walking Tours of Olympia: see 9 • 20 • 99 | | New Student Advising Session: Library 1612 | | | | | | SEX: Interactive Theater and Discussion: Second Floor Library Lobby; Brought to you by Evergreen students, this present and discussion on dating etiquette, personal safety, safer sex, and gender dynamics at Evergreen. Discussions will be frank and titillating. Demonstrations, prizes, and free samples will be available. | | Movie Night: Lecture Hall 1; "Fargo" | |

For details consult orientation week pamphlet

Orientation schedule continued on page 4

Work study – not the enigma it used to be

by Jen Blackford
Interim features editor

Do you have any idea what your financial aid packet says?

Hopefully, you have some clue, since you did have to sign things saying you understood what you were getting yourself into, i.e. loans, debt, owing a copious amount of money for the next ten to fifteen years of your life.

But did anyone talk to you about work study? Was there anything you had to sign about it? Did you even get it in the first place?

I know I had no clue about what work study was or what I would have to do with it until a few days ago, when I scheduled an interview to talk with Julie Anderson, an Evergreen senior and assistant to the Student Employment Opportunities (SEO) Counselor.

Here is what I learned from her, presented in a handy Frequently Asked Questions form.

What exactly is work study?

Work study is a financial aid award given to the college by the federal government, in both state and national monies. The college then provides it to some students, giving them an opportunity to work on or off campus at a variety of jobs, while whoever employs them, be it Olympia business or TESC, is then reimbursed for whatever the employee earns.

How many students receive work study? Why so few?

The government bestows the money to the schools in proportion to the amount of students, and since Evergreen is such a small school, the number of students who actually receive work study is far less than the number of students who qualify for it. For the 1999-2000 academic year, approximately

385 students received work study of some form, a minuscule percentage of those who need it.

If I have been given work study for the year, how do I go about getting it?

First of all, you have to pick up your work study authorization card at the Financial Aid Office. It's a card you give to your employer giving basic stats (name, quarter registered, your work study eligibility). You can pick it up starting Sept. 20.

Next, check the job postings at the work study board. It's located right across from payroll, near registration and records. Check early on so you have a better chance of getting the job you want.

What if I want a job off campus?

Evergreen has over 100 contracts with various businesses and federal departments, such as Behavior Health Resources and the Department of Wildlife. Most, however, hire later in the year, so don't necessarily rule them out if you don't see them immediately up on the job board. During Orientation Week (Sept. 18-26), around 20 off-campus jobs will be posted, with more to come.

What if I don't see anything I want to do for work study?

It's important to come in as soon as you can to make sure that you've seen all your possible job options. However, if you still don't see anything that looks appealing to you, try talking to the SEO office. They might have a contract with someone you haven't seen posted. There's also the possibility for you setting up a work study opportunity on your own, especially if you know what you want to study and where to look.

What if I don't want work study?

Some students find that they need to concentrate on their studies or they simply just don't have enough time to work. They can have a partial amount or all of their work study financial allotment converted into an unsubsidized Stafford loan.

What happens if I earn more than my work study allotment?

When you get close to your limit, there are a few options. Your employer could pay you out of his/her pocket (unlikely and expensive for him/her). You could start cutting down on hours. You could even see if it's possible for you to get extra work study money, provided there are leftover funds in the account and you have an unmet financial aid need.

How can I get work study money if they told me initially it was all gone?

Students who refuse the work study funds and take the loan instead have their funds returned to the "pot" from where it came from. Thus, reapplying for new and additional work study funds can prove beneficial if other students choose not to use theirs.

Remember, just because you didn't get work study this year doesn't mean you can't get it next year. Financial situations change, and it could be that next year, you might get work study again, or for the first time. Provided you turn in your taxes on time.

Jen Blackford is returning for her second year at Evergreen. Her interests are writing, literature, journalism, and macabre topics. She wrote this story because she has work study and wasn't sure what it entailed.

Possible campus work study opportunities

Library

Academic Advising

Computer Center

Costume Shop

Student Activities (coordinating)

Career Development

College Resource Center

The Cooper Point Journal

and much more...

| | 10 | 11 | 12 | 1 | 2 | 3 | 4 | 5 | 6 | 7 | 8 | 9 |
|--|---|----|----|---|---|---|---|---|---|---|---|---|
| Thurs. Sept.23 | Evergreen Automated Registration System (EARS) 7a.m. - 7 | | | | | | | | | | | |
| | Walk-in Registration: First Floor Library Lobby | | | | | | | | | | | |
| | Learning Resource Center Open | | | | | | | | | | | |
| | Walking Tours of Olympia: 10:30 a.m. - 12:30 p.m. | | | | | | | | | | | |
| | Walk-in Registration: First Floor Library Lobby | | | | | | | | | | | |
| | Payment of Tuition and Fees: Cashier's Office, Library 1119. TOLL TUITION IS DUE BY 3:45 P.M. | | | | | | | | | | | |
| | Student IDs: First Floor Library Lobby | | | | | | | | | | | |
| | Computer Center Lab: Library 2408 | | | | | | | | | | | |
| | Learning Resource Center Open | | | | | | | | | | | |
| | Courage To Learn Day 2: See Wednesday for description | | | | | | | | | | | |
| Learning To Learn: Library 2205. Pose questions to returning students, staff, and faculty who can help you feel up for academic success. | | | | | | | | | | | | |
| Ask Jason: Everything You Ever Wanted to Know About Drugs and Alcohol: Longhouse 1007. Abuse of alcohol or drugs can seriously impair your academic performance. Have your questions about alcohol and drug use and abuse answered by Jason Kilmer from the Counseling and Health Center. | | | | | | | | | | | | |
| Disability Services for Transfer and Returning Students: Why Should You Attend This Session? Library 2205. Students who have received accommodations for any kind of disability at any college should attend this session. | | | | | | | | | | | | |
| The View From Here: International Students at Evergreen Longhouse. Help us welcome our new international students through a video and discussion dealing with culture shock. This is the place for U.S. students to find out what being an international student is like. All students interested in cultural studies, cross-cultural communication and study abroad are encouraged to attend. | | | | | | | | | | | | |
| Seminar Savvy for Transfer Students: Library 1600. Faculty facilitators will share tips on how to seminar well, participate in a meaningful way, and get the most out of seminar. A short article or story will be distributed and discussed. | | | | | | | | | | | | |
| Fri. Sept.24 | Walk-in Registration: First Floor Library Lobby | | | | | | | | | | | |
| | Payment of Tuition and Fees: Cashier's Office, Library 1119. TOLL TUITION IS DUE BY 3:45 P.M. | | | | | | | | | | | |
| | Student IDs: First Floor Library Lobby | | | | | | | | | | | |
| | Computer Center Lab: Library 2408 | | | | | | | | | | | |
| | Learning Resource Center Open | | | | | | | | | | | |
| | The courage to learn: day 3 | | | | | | | | | | | |
| | Close Relationships Need Good Boundaries: CAS 108. When your friends have good boundaries with you, you'll learn ways to claim your work space and still stay close. | | | | | | | | | | | |
| | De-Mystify Conflict Resolution: CAS 108. Learn more about the services available through the Center for Mediation Services and how to settle disputes in a safe and cool way. This session is about normalizing conflict, exploring your actions when conflict occurs, and learning about your personal style and reaction to conflict. | | | | | | | | | | | |
| | All Student Convocation: Longhouse. Convocation is Evergreen's celebration making the start of the academic year by students, faculty and staff. Come join the festivities and enjoy music, food, and gifts. | | | | | | | | | | | |
| | Dance to Live Music: Red Square (near location library 4300) | | | | | | | | | | | |
| Field Day on Red Square: fun and games to ensue. | | | | | | | | | | | | |
| Saturday Sept.25 | Weekend College Recreation Trips Sponsored by College Recreation Center Activities (CRC): Information and handouts for each trip must be read (available in CRC) prior to signing up. Space is limited for all activities to the first 13 who sign up and pay their non-refundable fees. Sign-up and fee collection is scheduled for Monday, Sept. 20 through Thurs | | | | | | | | | | | |
| Monday Sept.27 | Official first day of classes. | | | | | | | | | | | |

MAIL BOXES ETC.®
1001 Cooper Point Road SW #140 (Across from Toys 'R' Us)
705-2636
Hours: Mon - Fri 9 a.m. - 6 p.m., Sat. 10 a.m. - 4 p.m.

69¢ per month
MAILBOX SERVICE
Introductory offer for new mailbox customers
69¢ first month with 3 month agreement
69¢ first 2 months with 6 month agreement
69¢ first 3 months with 12 month agreement

5¢ COPIES
Everyday for Evergreen students only!

COPY COPY COPY
CLEAN CRISP COPIES

COOPER'S GLEN APARTMENTS

A Warm Welcome To All New And Returning Students.

From:
The Management of Cooper's Glen

866-8181 3138 Overhulse Rd. N.W.



Use your dollars with sense.

The Associates Student Visa® can help you manage college expenses with fewer worries. Your dollars go further with all these great benefits.

- 3% cash back on purchases*
- No annual fee
- Credit line up to \$2,500



To apply, call toll free
1-888-SEND-ONE.

*See Rebate Terms and Conditions accompanying the credit card. For more information and great discounts, visit our Web site at www.studentcreditcard.com.

? WHOZIT WHAZIT ?

be the tech

someone has to keep
computers used by
student groups
(including the newspaper)
working

how about YOU?

the Student Activities tech
also helps teach students
to use Macs and such
software as Word,
PageMaker and Excel
the tech needs
to be able to solve
Mac and PC problems

applications (plus details about position
responsibilities and pay) available at the
Student Activities front desk

CAB 320

deadline to apply:
FRI. OCT 1

1. Ask anything about Evergreen.
2. Bring it to the CPJ.
3. We'll publish the answer.

? WHOZIT WHAZIT ?

Grievance vs. law

While attending Evergreen, a student is governed by three things: the Student Conduct Code, Washington State Law, and Federal Law. And, there are two types of people on campus that govern: cops and the grievance officer. While all of the above connote obedience, they function differently. Below are some handy factoids about their differences.

When do I call 9-1-1 ?

Emergencies

If you feel you or someone else's life, health, safety or well-being are in danger, call 9-1-1 immediately.

Examples of emergency situations:

assault
medical emergency
rape
fire

The grievance procedure has no Due Process. Due Process is a set course that aims to protect the legal rights of an individual. Instead, the grievance officer retains the right to assign sanctions to anyone she deems in violation of the code.

When do I call campus security?

Non-emergencies

Campus security officers are Washington state police. This means they have the authority and training to enforce state law.

The Student Conduct Code does not apply to faculty or administration. No grievances can be filed against faculty or administration.

When do I call the grievance officer?

Violations of the Conduct Code

When you feel another student has infringed upon the rights afforded to you as a student - call the grievance officer. The grievance officer does not represent state law. If you want to report a crime, go to the police.

The director of Police services is Steve Huntsberry at x6140

The campus grievance officer is Sue Feldman at x5052

Copies of the Student Conduct Code were mailed to all on-campus residents.

KARINN'S VINTAGE CLOTHING

Located at Harmony Antiques

Distinct Vintage Clothing,
1900s - 1970s

113 Thurston Ave NE,
Downtown Olympia
956-7072 • Open daily



? WHOZIT WHAZIT ?

What the heck is a Provost?

And why does Evergreen have one?

by Ashley Shomo

Barbara Leigh Smith's office paints a cozy blue motif around two small couches, a rug and some fresh flowers - it's large compared to most on campus.

Smith's job is important and so is her title of Academic Vice President and Provost. But, what's a provost?

Basically, a provost is the movie director of a flick called, "Higher Education - the Curriculum and the People Who Teach It."

Or, Smith likes to compare herself to the conductor of an orchestra. She's in charge of getting the orchestra to produce music, but she doesn't actually play an instrument.

"All the curriculum and faculty report to me," she said.

Smith is talking about things like graduation requirements, program choices, the yearly class line-up, and hiring of faculty.

Currently, Smith has been working on five new programs and putting a little more math and science onto the plates of graduating seniors.

While most uses of the word Provost originate from military camps and prisons, Smith said she thinks the common idea of power related to her position is

innacurate.

"Just because I have a big office, doesn't mean I can make people do whatever I want," Smith said.

The provost is more "behind the scenes" than most think she said. While second in command, she said the provost does a lot of "facing in versus facing out."

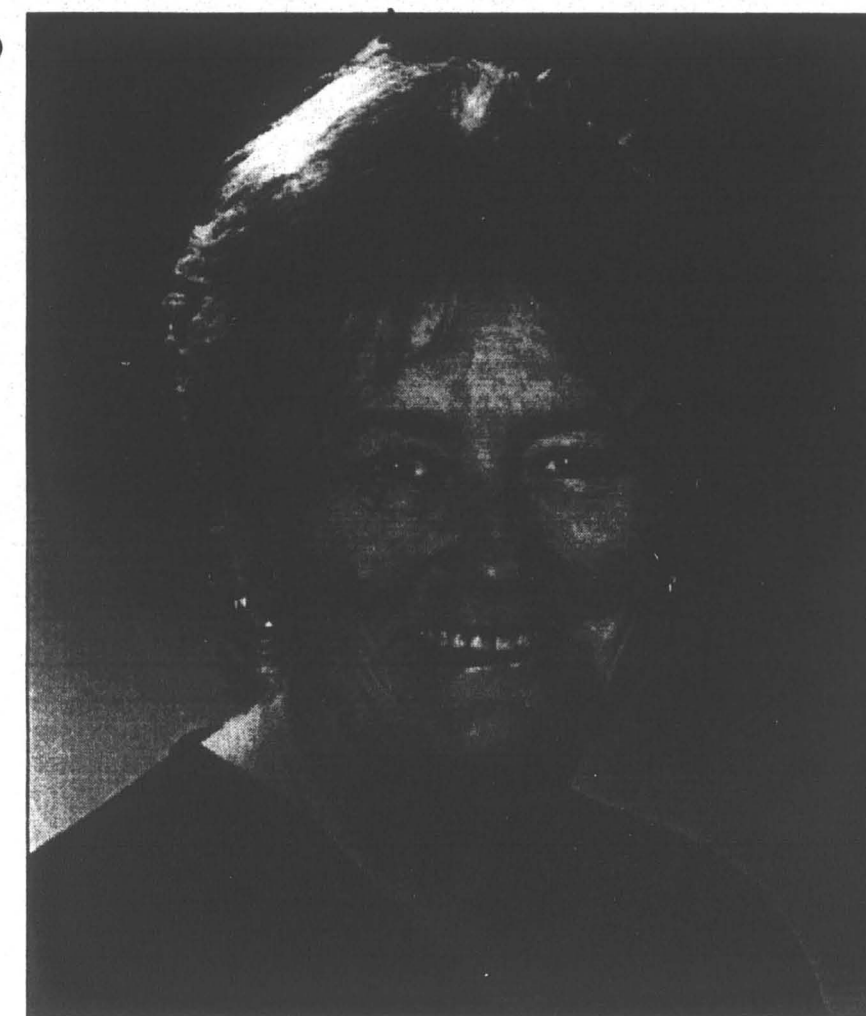
How does the Provost affect me?

Students don't see much of the Provost because she deals mainly with the Academic deans and the president. Students are more likely to interact with faculty and deans.

However, the Provost is working behind the scenes to set the requirements and options available to each student regarding academics.

Will I ever need to make an appointment with the Provost?

Probably not. If you have any praises or concerns about faculty or your programs, you have a couple of options: Express your concerns on a faculty evaluation or make an appointment with an academic dean.



Academic Vice President and Provost Barbara Leigh Smith has been with Evergreen since 1978. She started as the director of the Washington Center for Undergraduate Education and went on to become a dean prior to her current position.

Art COnstantino, not CONstantino

He's the V.P. of Student Affairs and hardly anyone says his name correctly



What's a Vice President of Student Affairs do?

Art Costantino is the guy behind the stage of Co-Curricular activities. In other words, all activities associated with an education that aren't part of the class schedule.

He works behind the scenes of admissions, student activities and recruitment. Costantino also oversees the campus grievance process.

When would I need to talk to him?

You'll probably hear his name more than you'll talk to him. Most of his conversations are with administrators and media. That's because he's behind the scenes of student activity.

How do I say his name?

Ka-stan-teen-oh

Who do I talk to?

- About my class or faculty? **An Academic dean**
- About student activities? **Thomas Mercado x6220**
- About housing? **Mike Segawa x6419**
- About the Student Conduct Code? **Sue Feldman x5052**
- About financial aid? **Marla Skelley x6205**

Key Bank

"HOP AT EVERY TURN"

Loans • Checking • Savings • PC Banking • Credit cards • Cash cards



See you **Saturday, September 18**
at Evergreen to open your accounts!

2920 Harrison Ave NW • (360) 753-5944

Orca Books

WE HAVE
Used Textbooks
WE OFFER

10% off New Copies
Current Qtr. Books

509 E. 4th Ave. • Downtown Olympia • 352-0123
M-Th 10-8, F & Sat 10-9 & Sun 11-5
WE BUY BOOKS EVERYDAY

Arts & Entertainment

"Gerontocracy: government by old men."
— Webster's New World Dictionary

How I spent my summer vacation

by Jen Blackford

Notting Hill

A mushy, romantic film that threatens to overwhelm the place in your heart where the urge to buy Hallmark cards, chocolates, and really expensive stuff resides. Perhaps even more inspiring was Hugh Grant's comeback as a romantic leading man after his scandalous encounter with a "Divine" being. Now he's with Julia Roberts. Of course, she acted with Richard Gere in another film. I'm talking about "Pretty Woman," of course. So Julia is separated from a real streetwalker by only one man. Now that's Hollywood.

The Sixth Sense

I told myself I would never see a Bruce Willis movie. But everyone said this was so good and not like him that I gave it a try. Surprisingly, it was a nice dramatic film, not scary as a horror movie is generally presumed to be. More of a suspense flick, the sheer terror comes from the fact that Bruce Willis is in the movie and it doesn't suck. It also features one of the only child actors I haven't felt an urge to gag. Incidentally, I predicted the end halfway through the film, so it didn't come as a surprise.

An Ideal Husband

Like "South Park," a humorous film. However, this one relied on verbal repartee and witty remarks courtesy of Oscar Wilde and performed with remarkable aplomb by Rupert Everett. I saw this one twice and enjoyed it each time. Even if you don't see this film, you should go read a book of Wilde's works. It will provide more intellectual stimulation than any major Hollywood production. And more enjoyment as well.

Summer time is over, so guess what? It's time for the summer movie wrap-up. Did you learn anything over the summer watching movies in the theater? Maybe you learned about rapping cowboys ("Wild Wild West"), teenage sex exploits ("American Pie"), or how a studio can take a great 1960s horror movie and turn it into a remake that doesn't even deserve to be seen on cable TV at 3 a.m. ("The Haunting"). Certainly, all this experience is worth some sort of college credit. How about 8 credits in "Visual History of American Culture?" (insert disbelieving laugh here) Without further ado, let's get going on the films that made this summer enjoyable.

Austin Powers: The Spy Who Shagged Me

A light-hearted romp about a spy, his archenemy, his archenemy's miniature clone, and Heather Graham. For the most part, it was a nice summer movie, like popcorn. Tasty, not really filling, and gone from the digestive track before you know it. Worth the matinee price, though, and the scenes between Mike Myers and Seth Green as Dr. Evil and his son respectively are wonderfully dysfunctional. You'll appreciate your parents more during Orientation Week if you keep this film in mind.

SOUTH PARK: BIGGER, LONGER, AND UNCUT

It begins to be extremely evident upon viewing this film why all the Evergreen students wished to get this added to their cable system. It was definitely the best political movie I've seen this year, and the musical numbers were catchy enough to make me want to buy the soundtrack. Plus, you see Kenny's face and hear him say something meaningful. Certainly the most humorously offensive movie I've seen as well, which only adds to its charm.

The Blair Witch Project

Some people said the camera work made them ill. I personally felt chilled as I walked out of the theater. Scary in the sense that your imagination is given free reign with the ambiguous ending, what it doesn't show is infinitely more terrifying than what it could show. This movie also served as an inspiration to independent filmmakers who learned that they didn't need a lot of money or an intricately-plotted story to be successful. They just need a willingness to be flexible and follow where the story takes them.

A Stir of Echoes

The down-to-earth cousin of "The Sixth Sense," it provided more traditional chills than the afore-mentioned film. However, it is predictably plotted and there is way too much digging going on. I got the point about twenty seconds in, and felt like screaming "All right. We know you're digging. Just find the dead body so we can all go home." It won't be telling you too much to let you know that one scene is reminiscent of both Edgar Allan Poe and Roger Corman.

Stigmata

A religious film that I actually liked? Dismissed by most critics, both liberal and Catholic, I enjoyed this because of two things: Gabriel Byrne and the almost Gothic treatment of organized religion. There was blood, fire, scents of roses, and a fairly creepy soundtrack with Billy Corgan and a song called "All The Pretty Things Are Going To Hell." Like a Marilyn Manson video, it manages to offend a great portion of the audience while at the same time fascinating the rest. I loved it, but of course I liked the entire Hellraiser series, so who knows what that means.

Teaching Mrs. Tingle

The weakest out of all movies reviewed here, it nonetheless managed to be moderately entertaining. It brought back fond memories of high school, memories that included me kidnapping my teacher, knocking her unconscious, setting her up with the guy I had a crush on...wait, I'm thinking about the film. Never mind.

Would you like to be the next
S & A BOARD MANAGER?

19 hours per week • \$5.70 to \$6.50 per hour


Increase your skills in:

- Office Organization
- Graphic Design
- Minute Taking

(Work with great people, gain great experience!)

APPLICATION DEADLINE: OCTOBER 1 @ 5:00 P.M.

as seen on
WB 22



It's amazing what this little thing can do.

Protect yourself from getting pregnant with the birth control pill or another contraceptive. During September and October, new patients receive first month's supply of birth control pills free!

Call for an appointment today.
Planned Parenthood
of Western Washington
1-800-230-PLAN
www.pppww.org



Layout Editor Sports Editor Writer Features Editor

Circulation Manager Columnist Letters and Opinions Editor Seepage Editor

Some shoes need filling at the CPJ*



Copy Editor Ad Proofer Comics Editor Artist

Photographer Distribution Manager Photo Editor Ad Design

Ad Rep Illustrator Arts & Entertainment Editor Calendar Editor

*Evergreen's student newspaper is hiring for the 1999-2000 school year. Shoes that are identifiably gender-specific in no way precludes people of the opposite gender from being eligible for that position. Not all positions are compensated. Position descriptions and applications will be available at the Student Activities Fair on Tuesday, September 21, 1999, 1 - 3 p.m. in Red Square, OR outside the Cooper Point Journal in CAB 316. The closing date for all positions is October 14, 1999 at 4 p.m. in CAB 316.

h On-campus

by Jen Blackford
Interim features editor

all photos by Aaron Cansler
Interim photo editor

No idea where you need to go on campus, but know what you're looking for? Don't despair. Here, presented for your viewing pleasure, is a list of all the buildings you'll ever need to go to while you're at Evergreen, as well as what they contain. Who knows? You might learn something new.

Red Square (a.k.a. that place you walk on)

Distinguishing features: I don't know...maybe the fact it's red? Just look down at your feet and you'll know you've found it. Close to many buildings.

Why you would ever go there: To get to anything important on campus, one must walk upon this hallowed square. It's a meeting place for many students as well as a great place to relax. This is also the best place to play kickball. You should probably wait until twilight, however, to avoid hitting students in the face with the ball.

Little known fact: In a 1995 survey, Greeners said they were most afraid of slipping on Red Square.

The Library (a.k.a. LIB)

Distinguishing features: Faces Red Square and has the Clocktower next to it. Usually has a coffee cart in front of it as well as metal book bins. Faces the main bus loop and is host to many a class.

Why you would ever go inside: How many reasons can I count? This building has it all.

First floor: Copy Center, Registration and Records, Payroll, Cashier's Office, Financial Aid, Admissions, Academic Advising, Media Loan, and Student Accounts. Basically, anything financial would go through here.

Second floor: The actual library, Computing and Communications, and the Academic Deans. This could be termed "the place where you do all your research."

Third floor: Still more of the library, the Learning Resource Center, the Writing Center, and the offices of all the administration. A place to go for help of all sorts.

Fourth floor: Opened up usually for special events.

Little known fact: The top of the library building is a great place to see stars in the nighttime sky.

The College Activity Building (a.k.a. CAB)

Distinguishing features: Notable for students protesting near it. Usually one of the

first places you see walking from Housing. Has many signs in the windows, generally.

Why you would ever go inside: This place, like the Library building, has a lot to offer.

First floor: Evergreen Food Pantry, Bike Shop, and the Greenery. A place to eat and get your bike fixed.

Second floor: The Deli, Bookstore, and the ATM cash machines. You can get a lot of stuff you need for school on this floor, and pay for it as well.

Third floor: Student Activities with over 50 groups, KAOS radio, and the Cooper Point Journal. If you want to join anything, this would be a good place to start.

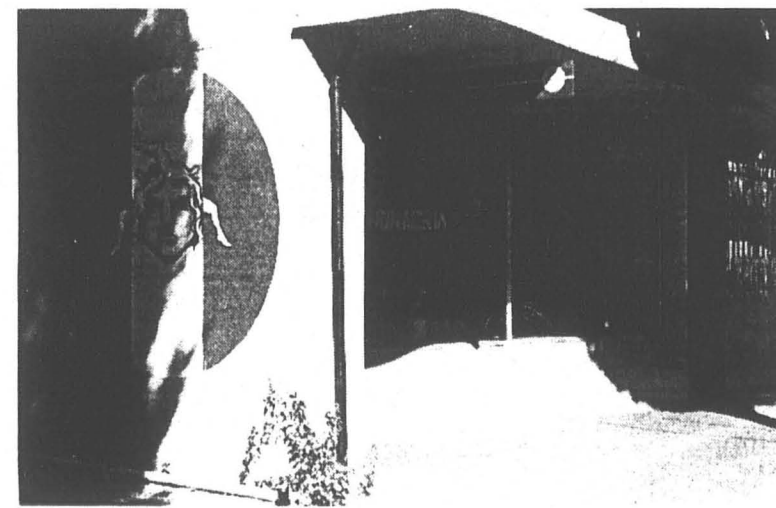
Little known fact: The bathrooms on the third floor have a front door that locks.

The College Recreation Center (a.k.a. CRC)

Distinguishing features: Right next to the CAB. Has an indoor swimming pool visible from the outside. Like the CAB, one of the first buildings you'll see from Housing.

Why you would ever go inside: This is recreational heaven! You can swim, go indoor and outdoor rock climbing, play racquetball and basketball, exercise, check out equipment, join the Wellness Center, and do a variety of other healthy, athletic things you might not have thought Evergreen offered.

Little known fact: There's a little niche near the building called the Echo Chamber that is a great place to play drums or just yell in general.



T S P off-campus

Seminar Building (a.k.a. SEM)

Distinguishing features: Next to the Library building and the Longhouse. Usually has a police car in front of it.

Why you would ever go inside: Lost your wallet? Want an escort back to your dorm? Thinking of turning in your rowdy roommates? This is the place to do it. Police Services resides here, along with Parking/Key Issues, which is where you pay your tickets and get keys if you're approved for them. Also home to the Health Center, a place to get low-priced medical help.

Little known fact: The EF International School of students have a floor at the top.

Longhouse (a.k.a. the only building on campus not made of concrete)

Distinguishing features: An actually



attractive building that isn't gray and massive. Has a totem in front as well as pretty good handicapped parking.

Why you would ever go inside: Many great events are held in this building, most likely because it actually looks like a place to have fun on the inside. Some people have classes here.

Little known fact: It's larger than you think. Students have been known to gasp as temporary walls are removed, revealing even more space.

Communications Building (a.k.a. COM)

Distinguishing features: One of the farthest buildings away from Red Square. It's closest to the CRC and can be seen from the Housing Community Center.

Why you would ever go inside: If you're an artist of the performing or visual sort, you'll probably make a trip here. There's studios of all sorts, animation labs, stages, Instrument Check-out, and

the Costume Shop on the second floor.

Little known fact: Costume; you can use for your plays include Rainbow Bri'e costumes, an ivy bra, and a vest with plastic leaves.

Lab I, Lab II, Art Annex (a.k.a. ?)

Distinguishing features: Grouped together behind the Lecture Halls. Connected together and looking remarkably similar.

Why you would ever go inside: Science students will appreciate Labs I & II, which is where their classes will most likely be, as well as giving them easy access to chemical and biological experimentation. Art students will enjoy the Art Annex, which has the Woodshop, the Metal Shop, and a place for pottery. Post-industrial students will note the fact that fiery kilns are in close proximity with potentially lethal chemicals.

Little known fact: There is another coffee cart inside one of the Labs. Guess which one...

A-Dorm (a.k.a. the Ghetto, the Projects)

Distinguishing features: Tallest building in Housing. If a fire alarm blares, chances are good it came from here.

Why you would ever go inside: Well, if you're a first-year student, you'll probably live here. This is also where the Housing Office is (third floor) so if you have any problems with your living quarters, you'll go here. The Edge is in here, and shows great movies on Friday and Saturday nights, as well as hosting a Sunday Simpsons/X-Files night.

Little known fact: There was the Great Onion Cook-off last year, where caramelized onions made their debut.

Housing Community Center (a.k.a. HCC)

Distinguishing features: It's the only building on campus that has adjoining windows. Noteworthy in this land of concrete architecture. Also next to the soccer fields.

Why you would ever go inside: There's the laundry room, the Branch, and the Midnight Fix, which also hosts Subterranean Pizza. The HCC is a place of open mike nights, late night dining, and last minute grocery shopping if you run out of essentials, like toilet paper. You can also play Foomball, check your mail, use a computer, and just lounge around at midnight.

Little (un)known fact: Do you tip the Subterranean Pizza people when they deliver?

Other places of interest:

Flot: Don't park here, unless you have to. Has the most break-ins on campus.

Clocktower: Some people try to rappel this imposing edifice.

Organic Farm: Natural fruits and veggies! A good place to go to on a walk.

Child care Center: Filled with kids often more mature than many college students.

Alphabet Soup: B, C, and D-dorm. Usually quieter than its neighbor, A.

The Mods: Modular housing, or Trailer Park as it's commonly known.

by Jason Miles
Interim L&O editor

Contrary to popular belief, there is quite a bit to do in Olympia. It's a hotbed of film, food, and freaky occurrences. The guide below, penned by our own Jason Miles, will show you through the wonder that is downtown Oly.

The Old School Pizzeria

If you're of the mindset that good pizza is better than bad pizza, then go to the Old School. Here you will experience the finest New York style pizza in the Pacific Northwest. If you don't like pizza, then you should go anyway because they have a rad "Dirty Harry" pinball game in the back.

excellent place to find them. They have a superb selection of music (vinyl or CD). They also specialize in skateboards and Converse tennis shoes.



The Spar

The Spar has good milkshakes and good atmosphere. The waiters and waitresses don't like it if you stay after you're done eating, which is a bit annoying but understandable. They also

row behind sat a man eating a raw fish...not sushi...a raw fish with the skin and bones intact. If you do go to the Capitol Theater, don't act like a jackass; have fun but don't disrupt other people's viewing experience.

specialize in nice tobacco products.

King Solomon's/the Reef

I have far too many stories to tell about King Solomon's. If you want to get bad food, stolen car stereos, bad coffee and a lovely experience, go to King Sol's. They stay open until 2 p.m. and have a 6 a.m. happy hour. Hey, if you're a good cardplayer, try your hand against the salty veterans of the card room.

THEKLA

I have never been to THEKLA. But I hear it's pretty cool. If you like to dance, you should go to THEKLA.

Planned Parenthood

This is where you go if you want to stay sexually clean and safe.

The Capital Mall

Fun is always to be had at the Capital Mall. I usually go to the Capital Mall if I want to become severely depressed. The last time I was at this mall I watched two fellas bark at a lady walking into the mall; she didn't seem to mind.

The Capitol Theater

The Capitol Theater is where the Olympia Film Society (OFS) resides. If you like film, go to the Capitol Theater, buy a membership, volunteer, watch movies and tell your friends. In October, watch for the Olympia Film Festival. I have nothing but good things to say about the Capitol Theater and OFS. Actually I do have one funny story. I was sitting in the front row, watching Terry Zwigoff's "Louie Blui'e" and one



Orca Books

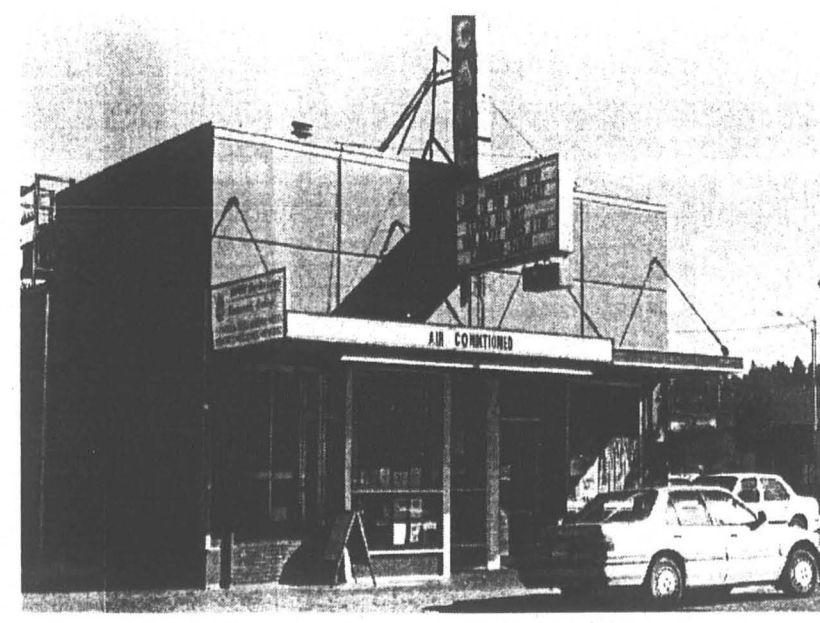
I don't know what to say about Orca Books other than it's one of the finer bookstores I've encountered in a long time. They have a wonderful rare books selection (especially featuring the books of Edward Gorey). You should go to Orca because they're nice.

Trinacria

This is the best restaurant in all of Olympia. Your life will be richer and pleasant if you go to Trinacria. Be sure to make reservations a day in advance.

Rainy Day Records

If you're a fan of foreign films, this is an


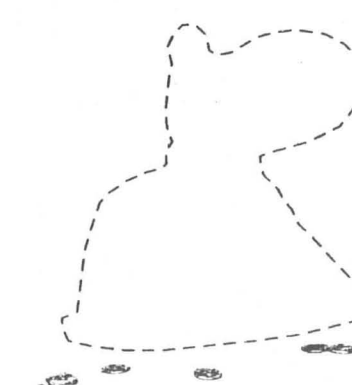



HARBINGER INN Bed & Breakfast
Charming 1910 Mansion Overlooking the Puget Sound
Students eat for free!
1136 East Bay Dr., Olympia, WA 98506 • 754-0589

Pick A Book
Browsers' Book Shop
New & Used
107 North Capitol Way
357-7462

HANNAH'S tavern
FREE POOL EVERY DAY UNTIL 3 pm
360 357 9890
123 5th Avenue SW Olympia WA 98501
HAPPY HOUR MON-FRI 4-6 p.m. Draft Specials \$3.00 food
25¢ SCHOONERS FOR STUDENTS Starts @ 9 p.m. 'til we blow the keg!

805 E. 4th ave. **Darby's Cafe** phone 357-6229
Welcomes back Evergreen College Students!
Come in and enjoy the new remodel, and menu...
Now offering Breakfast all day everyday.
Darby's is the place students chose last year as their week-end breakfast choice so, we've extended our breakfast during the week to all day. Added more Vegan and Vegetarian choices and enlarged our staff to speed up the process.
Visit our website for week-end specials, discount coupons and upcoming events @ www.darbyscafe.com
located downtown at the corner of 4th ave. & plum st. entrance under the purple awning on plum st.

Some Bookstores Giveth.

And Some Bookstores Taketh Away.

Only The Evergreen State College Bookstore Gives all its profits back to the College.
It's true. All other bookstores selling books to students on this campus send profits to some Wall Street shareholders or private investors. All stores, that is, but the TESC Bookstore. Granted, we're not a huge, money-making machine. But we do serve this campus for the sole good of the students and the college. And we're the only store that can say that. So keep that in mind the next time you need books, supplies, or clothing. And remember: Keep your money on campus.
Hrs: Mon-Thurs 8:30am-6:00pm Fri 8:30am-5:00pm
Phone: 866-6000 ext. 6212 for customer service


• COOPER POINT JOURNAL •
OWNER'S MANUAL
 1999 - 2000

Newspapers are made up of stories. Stories can be told in myriad ways: with words, with photos, with drawings. **EVERYONE** has a story. Tell us yours ...

Holy Newsprint, Batman! WE OWN IT!

The CPJ is located in CAB 316 and can be reached at 866-6000 x6213, or by fax: 866-6685. The CPJ is staffed Monday through Friday from 9 a.m. to 5 p.m.

The Friday Forum, led by CPJ advisor Dianne Conrad, is a meeting for students to explore journalism ethics and responsibilities. The Friday Forum takes place on Friday at 2 p.m.

For more information about how to submit to The Cooper Point Journal, stop by the office in CAB 316, or talk to Editor-in-Chief Greg Skinner or Managing Editor Ashley Shomo.

All submissions are due on Friday at 4 p.m.

MISSION STATEMENT: The Cooper Point Journal serves the Evergreen Community and the greater Thurston/Mason counties by producing a newspaper that aims to reflect the interests of the Evergreen Community. The Cooper Point Journal serves the students of Evergreen by offering a laboratory where students can learn about newspaper modus operandi, lingua, culture, creed and perspective, polish communication skills, experiment with ways to effectively communicate in print, supervise staff and operate and manage the financial affairs of a publication. The Cooper Point Journal editors, staff and advisors encourage and support the dissemination of information and opinion/viewpoint which increases multicultural understanding and confronts injustice and discrimination.

News

• Contact an editor if you are interested in news writing. Word limit will be assigned by an editor.

Comics

• Comics must fit a 1 to 4 ratio or a 1 to 1 ratio (example: 5" by 20" or 5" by 5").

Arts & Entertainment

• Contact the A&E Editor to pick up or suggest A&E story ideas. Word limit will be assigned by the A&E editor.

Seepage

• Place Seepage submissions in the Seepage's personal mailbox within CAB 316. Written works should be submitted on disk, especially if they are verbose.

Calender

• To submit a calender item, provide the name of the event, the date, time, location, cost of the event, and a phone number to call for more information. If the notice is for a regularly scheduled group meeting, provide the name of the group. Calendar items are subject to editing/rewriting by the calender editor.

Letters & Opinions

• Submissions to the L&O section must include the author's real name and phone number. Priority is always given to Evergreen students. Letters written by more than one person must contain all the authors' names (and phone numbers, for verification only). Letters should be kept under 600 words. Letters commenting on issues discussed in previous issues should be kept under 450 words. When space is available you may be allowed to exceed limits.

• Editorial cartoons must be a 1 to 4 ratio or 1 to 1 ratio (example: 5" by 20" or 5" by 5").

Tacoma campus has a few words ...
Student Coordinator praises Evergreen

Paul L. Gerhardt, Jr.
 Commentary by S&A Coordinator - Tacoma

There are a lot of people out there who have no idea that Evergreen has more than one campus. There are about 125 of us at the campus located on Hill Top in Tacoma, Washington, on the corner of Martin Luther King, Jr. Way and 12th.

Evergreen Tacoma has only a few similarities if you were to compare us to the Olympia campus. We do not have grades. We have to write evaluations at the end of each quarter, the only one that makes it into our permanent files are the ones written at the end of the year. We have lecture groups, a small chemistry lab, and several small rooms (6 class rooms, some of which double for computer labs, chemistry labs and a multimedia lab) and a large room that doubles as a foyer/presentation room/cafeteria/whatever we can do with it room.

We learn with a set coordinated study that lasts the full academic year. This year's program is focusing on Transitions. Last year's was on Leadership. The year before, Power. We do have independent credits and programs that we can arrange via contracts for groups or independent study. However, we are required to have at least 45 Core credits from Evergreen.

Before any student can graduate from our campus there are two requirements. We are required to write an autobiographical memoir that covers and identifies a moment in our lives that is meaningful, either positively or negatively. After writing mine last year, I understood why autobiographies are a requirement; you really grow emotionally, spiritually and intellectually! The other requirement is that you prepare and give an oral presentation to the class, before graduation.

We are unique in that we have a second graduation ceremony in Tacoma for our students and families. This is a great way to reflect upon our time at Evergreen and to say good-bye to our fellow students or make arrangements to keep in touch. We may graduate from Evergreen, but a little piece of our heart stays with our little Hill Top college.

What really makes us special, is the fact that the population of our campus is about 92 percent culturally diverse. Our campus is 47.4 percent African American, 2.2 percent Asian/Pacific Islander, 5.8 percent Hispanic and well, you do the rest of the math, 28.5 percent White.

The diversity on our campus is not only from ethnic backgrounds; we are primarily working adults with an average age of about 36. Some students are in their late teens or early twenties and some are in their seventies.

Students attend primarily in the evening. However, there are day classes that are taught by the same faculty at night, with the same curriculum. Our Evergreen students are all juniors and seniors; many of them come from the "Bridge" program, taught on our campus through collaboration between Tacoma Community College and Evergreen. They graduate with at least 90 TCC credits when they enter the "upper division" and officially enroll at Evergreen.

I think that we at the Tacoma campus are very special in many ways. We think of ourselves as a big family. We are separated only in seminars or classes taught in smaller groups from eight to 30 students, depending upon who your advisor is and what classes you wish to take. We do many of the seminars in the "Family Room" which holds about 75 students. Usually family room seminars include the whole student body (either night or day).

We have a faculty advisor that is appointed to us, determined usually by the future career or academic plans of each student. I am told that we are thought of as weird by many Olympia TESC students, because we respectfully use earned titles for our professors; Dr., Mr., Miss, or Professor.

Whatever it is that we choose to study, the faculty manages to instill us with the facets that make up our campus mission statement: hospitality, inclusivity, reciprocity, and civility. We are taught the values of giving back to our communities and know that we, as our mission statements states: "Enter to learn and depart to serve."

Although we have many differences from the students and programs at the Olympia campus, we pride ourselves as "Greens" and feel a sense of honor to be associated with a college that is known for teaching critical thinking and environmental awareness. We take our differences and similarities in stride, believing that TESC students, from Olympia or Tacoma, are a part of a much bigger ordeal; an educational institution regarded consistently as one of the best liberal arts schools in the world!

NEWS

Little Chunks

Washington State has eight public 4-year schools
 Washington State has twenty-seven private 4-year schools

5.5% of the people in Washington have never been to high school
 15.9 % of the people in Washinton state have a bachelors degree

Average tuition to a private 4-year school... \$14,072
 Average tuition to a public 4-year school ...\$3,036

The president of the University of Washington makes ...\$228,000
 The president of Evergreen State College makes ...\$117,816

Last year the average SAT score in Washington was .. 1050

Possession of 2.5 grams of pot is 90 days in jail and \$1000¹
 Using a fake ID in a state liquor store is 90 days in jail and \$1000²

1,2... Maximum penalty, Thurston County Prosecutors office.

Work with the hottest technologies,
 create flexible,
 responsive internal systems,
 and challenge yourself
 on a daily basis.



AT&T Wireless Services is looking for individuals with outstanding academic records to join our Information Technology team in Redmond, Washington, as Functional Design Analysts. If you like designing solutions to complex, real-world problems, this job is for you.

If you have an interest in technology, are graduating with a BS, BA, or graduate degree, have a high GPA (3.5 or above) in Liberal Arts, Business, or Computer Science and have worked part- or full-time during school, please contact us to learn more about this exciting opportunity.

To obtain more information about the Functional Design Analyst position, please visit our Web site at www.att.com/wireless/jobs and enter position code 99-0028581 in the keyword search field.

www.att.com/wireless/jobs

To apply for one of the above Seattle area positions, please type Job Code 99-0028581-ADESC on your resume. E-mail as text to jobs@attws.com or mail on white paper using plain fonts to: Jobs, AT&T Wireless Services, P.O. Box 97061, Redmond, WA 98073-9761.



AT&T Wireless Services

NEED A JOB?

Don't have work study?

Like to talk on the phone?



If you can answer YES to all of the above questions, The Office of College Advancement has the job for you! We're looking for a few good students to help raise money for the Evergreen Scholarship fund. Students should be assertive, possess excellent communication skills and have good voice projection. Need to have a good general knowledge of Evergreen. Prior telemarketing experience is desired. Average 12-15hr/wk. Salary \$5.75-6.00 per hr. Students hired will work Oct. thru mid-Dec. Possible rehire for mid-Jan. thru April depending on job performance. Contact: Debbie Garrington, Program Supervisor, Lib. 3121 or ext. 6190.

"FREEDOM OF SPEECH: Every person may freely speak, write and publish on all subjects, being responsible for the abuse of that right."

— Article I, Section 5, Washington State Constitution 1889

Letters

& Opinions

"Congress shall make no law respecting an establishment of religion, or prohibiting the free exercise thereof; or abridging the freedom of speech, or of the press; or the right of the people peaceably to assemble, and to petition the government for a redress of grievances."

— First Amendment, U.S. Constitution

Letters & Opinions is waiting for a good chat ...



How to submit: Please bring or address all responses or other forms of commentary to the Cooper Point Journal office in CAB 316. The deadline is at 4 p.m. on Friday for the following week's edition. The word limit for responses is 450 words; for commentary it's 600 words.

The CPJ wants to use as much space as possible on these pages for letters and opinions. Therefore, in practice, we have allowed contributors to exceed the word limit when space is available. When space is limited, the submissions are prioritized according to when the CPJ gets them. Priority is always given to Evergreen students.

The arrival of e-mailed letters may be delayed and may cause the letter to be held until the following issues. We will accept typed submissions, but those provided on disk are greatly appreciated.

All submissions must have the author's name and a phone number.

Alphabet Soup: Reflections on time served in campus housing Orientation Week

by Maya Penion
Commentary

As I walked the path from "F" lot I looked up at the mammoth cement living structures. Joking to myself I thought about how much the Housing main buildings were remnants of the "projects" or low-income tenements—ala Cabrini Green, deep in the ghettos of Chicago—or in some big East Coast city.

There had to have been a two-for-one cement sale in Washington back in the '70s, when most TESC buildings were constructed. This place looked so much better in the catalogs and on the website—the schematic and illustrations seem to yield more space for all of the trappings of suburban living I intended on bringing with me—my stereo, TV, Playstation, iron, microwave, snow board...all of life's essentials.

Not that I was complaining, just observing and having an initial first reaction that wasn't exactly positive.

I'm not sure what I was expecting...visions of the old school 80's and early 90's college flicks with the dorms being ivory covered brick buildings, with hard wood floors and cool cast of co-eds played by the likes of Rob Lowe and Molly Ringwald. Realizing my "negaholic" tendencies I took a deep breath and proceeded to lug my backpack and two ragged suitcases up to the check-in table.

After what seemed like a lifetime of standing in lines, I got my key. So far most of the Housing folks seem cool. My friend from back home went here a while ago and said I should try to hook up with Monique, the head-housing guru because she was hella cool. She had that Super Soul Sista vibe that I would dig. He said it seemed like I really could identify with her and "she'll look out for you." I tried to hook up but, having had lots of moving to do, I spared no time in lugging my junk up to my room.

Upon opening the door I realized that albeit small, I was going to be okay. I sat my shit down, hopped on the bed, as I would have done at home and Wham! As my body collided with the near concrete like mattress I realized that the foam padding I kept in my car was going to be used for more than drunken star gazing this year.

I was the first of four to move in. I was glad that participating in the First Peoples Minority Student Fellowship Orientation gave me the chance to get settled in—moving in a whole week before my other roommates. At that point I guess I could have deduced that my other three roommates weren't

people of color or they would be here too. When I wasn't in some group activity I ran home to try to personalize my new pad. It was as if I was "peeing" on the room, marking my territory before my other roommates showed up.

I turned on Erykah Badu, lit my incense, and tossed up my favorite posters. After 10 or more trips to the car I was done moving.

In an effort to capitalize on the alone time, I blasted my boom box, playing some of that "dirty south" type shit. This school being so politically correct, I didn't know when the next time I could safely indulge in some booty shaking, mindless "coochie call" music without being accused of setting feminism back. I brought a Tracy Chapman CD just in case.

It's weird, the first people fellowship orientation was a lot smaller than I had expected (only 20 people). I was all hyped presuming it would be the only time I would be in a predominantly minority academic setting at Evergreen (outside of being at Tacoma Campus).

Even with it having a lot less people than I had expected, I still enjoyed it. We made masks, went bowling, and talked a lot. My friend from Seattle told me about the Fellowship orientation that he went to at Evergreen two years ago. The way he explained it sounded like there was way more people—and more different types of people represented.

The last day of the fellowship gave me a strange feeling because I knew that over the next few days, the rest of the campus would be moving into their dorms. At that point, most of the students of color were pretty bonded with each other...our private Evergreen.

Most of us admitted to being the only or one of few people of color from whatever place we came from and knew that would be the case during and after this orientation was over.

NEXT COMING ISSUE: Roommates

Alphabet Soup is a series of often-fictional accounts based on real TESC Housing experiences, conversations, issues, and observations as told to and written by Patrick L. Mouton. The author Maya Penion is a pseudonym based on the ramblings of mine too lazy to write. You may submit story ideas and responses to: maya_penion@hotmail.com

Sports

Dawg days in Olympia

by Greg Skinner



Braxton Cleman, 29, jinks past the reach of Quinton Morgan, 23, during the final scrimmage of the Dawgs fall camp.

If you were in town during the last week of August, there is a chance you noticed an odd increase of "GO DAWGS" signs along the Highway 101 corridor, traditional Geoduck territory.

On August 28 you could hear the distinct crash of helmets and pad-covered bodies on athletic fields usually reserved for sports that don't rely on such protection: rugby, soccer and ultimate Frisbee.

The University of Washington rented TESC to play football.

The Team worked from 6 a.m. to 10 p.m. for 10 days learning plays, running drills, watching film. There was little time for anything else, besides the Dawgs were restricted to the yard.

They ended their run around the Evergreen ranch with a 100 play scrimmage. The number one offense played the number one defense.

The idea to hold a University of Washington fall football camp away from Seattle came last spring with the arrival of the new coach Rick Neuheisel.

Besides the chance to get the team concentrated on football, the usual football training facility Hech Edmunson Pavilion was

to be remodeled during camp time.

Other colleges considered for the camp were Big Bend Community College, Western Washington University and Yakima Valley Community College. "Evergreen was picked because it had the space and met our needs best," said Jeff Beckthold, spokesman for the University of Washington.

The Dawgs also need a place to put their training room and weight room. The pavilion housed it, all four semis full. The Housing Community Center was blocked off and transformed into the training room.

"The primary thing is food. These guys eat more than your average engineering student in for a conference."

Evergreen is used to large groups visiting over the summer with their conferencing business. "This is really very standard

business," said Nancy McKinney.

When the students leave campus every June they are replaced by 6,000 to 8000 visitors. Conference Services uses the campus to bring all kinds of people to Evergreen and Olympia.

Coach Neuheisel and his Dawg gang came down to Olympia for a meeting. Pete Steilberg, last year's director of the CRC, and the folks at Conference Services gave them a tour of the campus facilities. During that meeting, the Dawgs laid out their specific needs: how many meeting rooms, beds and meals.

The first price Evergreen gave the Dawgs was too high.

The price was brought to its final by removing such things as a nightly late snack

for the team and special locker arrangements.

Last spring the deal was finalized.

At a rate of \$70 per person per day for 10 days, 105 players, 45 coaches and staff—plus the rental of the fields at a rate of \$8300—made the total come to a flat \$113,300.

This deal came as a pleasant surprise to Conference Services as the end of August is a typically slow period for the Conference business. "Yeah, bonus, it was great," said McKinney.

S P O R T S
Q U I B B L E R
E N T J A K
U T L E T P A S S
I C K E T
E G U M
C R U M

HELP EVERGREEN KNOW WHAT THESE WORDS MEAN!



The CPJ is looking for an Interim Sports Editor ASAP. Apply in CAB 316 or call x6213.

ATTENTION RETURNING STUDENTS: Make up to \$3,000 next year selling ads for the CPJ

Develop skills that might actually get you a job when you graduate.

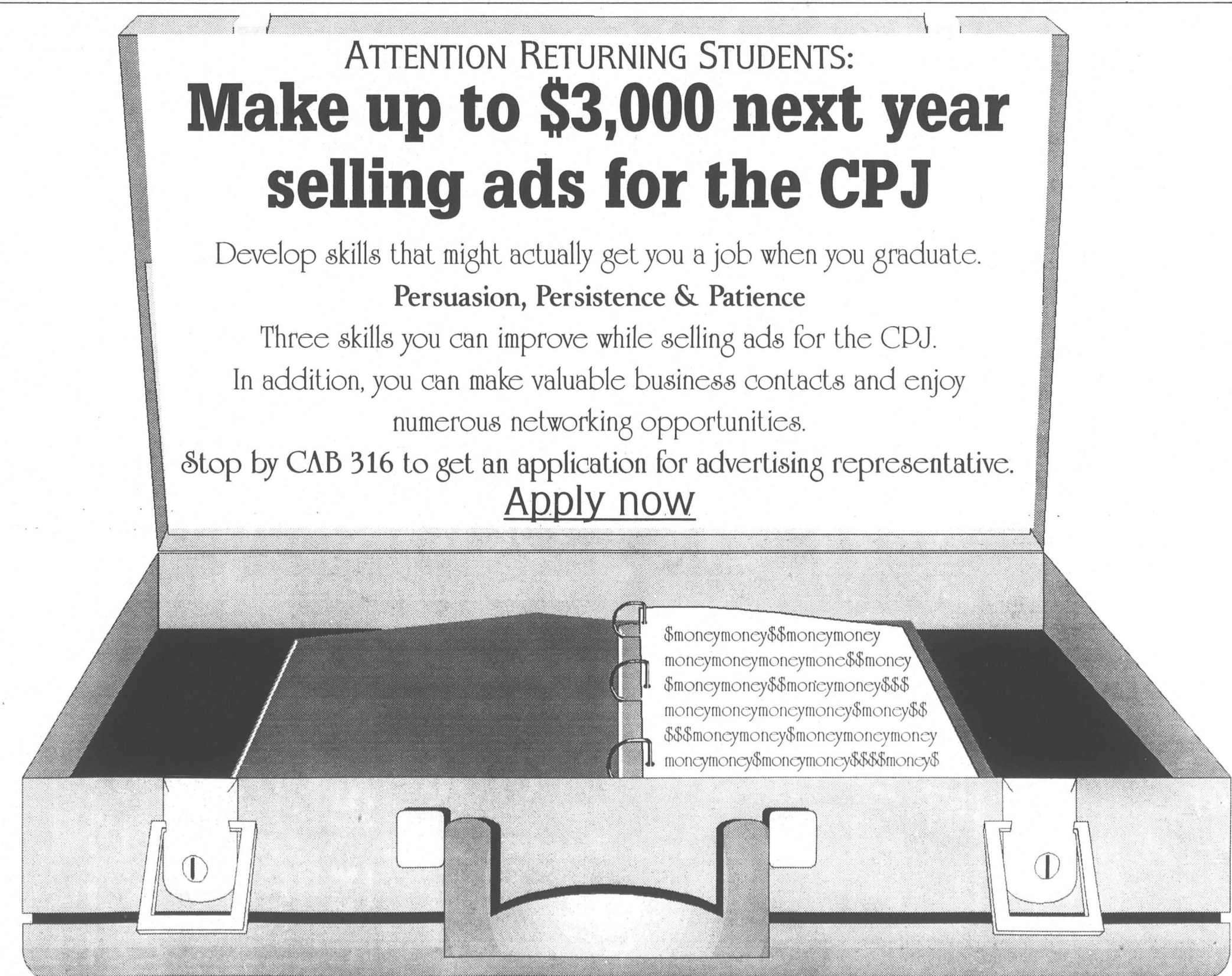
Persuasion, Persistence & Patience

Three skills you can improve while selling ads for the CPJ.

In addition, you can make valuable business contacts and enjoy numerous networking opportunities.

Stop by CAB 316 to get an application for advertising representative.

Apply now



Free University
Paper Products.

Savings - 3 trips to the store



Haircut
minus the Salon.

Savings - \$25

There's a better way
to save time & money



varsitybooks.com

Your Online College Bookstore

Save up to 40% on new textbooks.

Get them in 1-3 business days. Guaranteed.*

*Books delivered in no more than three business days or your shipping is refunded. Some restrictions apply. See www.varsitybooks.com for details.

STUDENT ACTIVITIES

The S&A board is still hiring

The office manager position and the board member positions are open.

Applications are available at the front desk in CAB 320. For more information stop by the S&A Board table at the Student Activities Fair on Sept. 21st or call x6221 and leave a message.

by Joe Groshong

The Services and Activities fee allocation board (S&A Board) is now hiring.

Last year the S&A Board allocated over \$1.25 million towards a variety of student activities and student funded groups. All of this money came from a quarterly fee that for students amounted to around one hundred eighteen dollars per quarter.

The Board is composed of 11 student members: one coordinator, one office manager, and nine board members. All positions are paid.

The student members of S&A Board determine how the money collected every year from students will be spent.

The money allocated by the board allows groups like the CPJ, KAOS, the Child Care Center, and the CRC to continue to operate and expand.

Student groups like the Women's Center, EPIC, and EARN rely on this funding to put events and purchase supplies for their group. The S&A Board interacts with all of these groups on a regular basis.

In addition to creating a budget that determines the level of funding that will be given to student groups next year this year's S&A Board will also be responsible for allocating \$45,000 in Special Initiative funding.

All of these positions provide excellent opportunities for leadership and general involvement in student activities. The Board meets twice weekly throughout the academic year and goes on one retreat in November.

Students must be enrolled full-time fall through spring and be able to make a full year commitment to be a member of the S&A board. All Evergreen students who meet these requirements may apply to be a part of this year's board.

Joe Groshong is an Evergreen senior. Joe spent last year as an S&A board member and returns this year as the director. He can be reached at x6221.

If you were a bubble ...

Some handy facts about Student Activities - a brief look at the lesser known options.

Community Gardens

Most tomatoes don't do well in your closet. In this bubble, you have your own garden plot, garden tools, compost, and access to gardening workshops.

x6145

You can pick up a directory on the third floor of the CAB to find out the specifics.

There are more than 50 organized student activities

SEED

Students at Evergreen for Ecological Design

Here's a little environmental action for students who like to design things. You will help "unite nature, culture and technology to reintegrate the need of human society within the balance of nature."

x2242

GRAS

Giant Robot Appreciation Society

Students with a sense of humor and taste for action might belong in this bubble.

GRAS prides themselves in "promoting cultural understanding through Japanese animation, Asian cinema and giant robots."

Excited by multi-tentacled deviants and shrill noises bounding through cities doomed towards demolition?

x6036

Start your own

Two registered students can go to the third floor of the CAB and start another group. All they need is a mission statement and a plan.

Evergreen Math & Science Network

Like math? Like science? Enough said.

x6636

Student Activities offices are in CAB 320

Talking About Race

Here's a great bubble of discussion for anyone who wants to talk about race. This group meets with the intention of "... ending misconceptions and racist behavior."

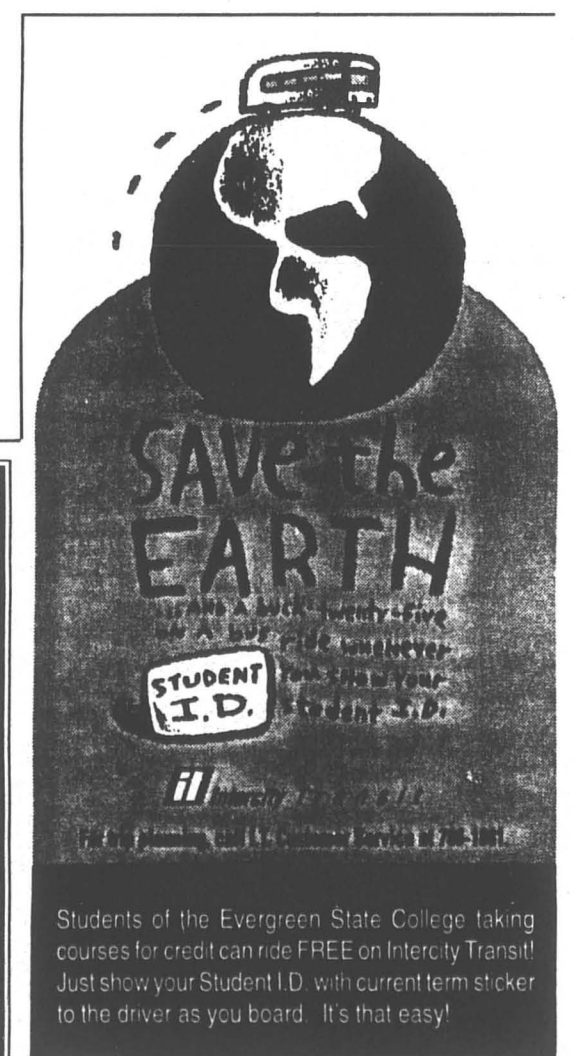
x6781

Archbishop Raymond Hunthausen will give a retreat for all those interested in social justice issues. The Archbishop, now retired, is widely recognized as a staunch supporter of human rights and world peace. By refusing to pay taxes to support the nuclear arms race, and by siding with the marginalized in society, he has won the respect of Catholics and non-Catholics alike.

The retreat is open to all. It takes place on **September 28, 1999** at St. Michael Church (Boundary at Eastside), 7 - 9 p.m.

In addition to this event, you may want to celebrate with the St. Michael Catholic Church, Westside community, as we dedicate the new church near Evergreen (17th and Overhulse) on **Saturday, November 6, 1999** at 5 p.m.

Need a ride from campus? Call 357-6027 or 352-5733 or 866-6000 x6098 (Steve)



Students of the Evergreen State College taking courses for credit can ride FREE on Intercity Transit! Just show your Student I.D. with current term sticker to the driver as you board. It's that easy!

Calendar *What's going on in TESC and Oly life*

Upcoming Concerts

Richard Thompson Band with special guest Martin Sexton
Friday Sept. 17 @ 8 PM
Capitol Theatre, 206 E 5th Ave.
Richard Thompson recently released a new album called "Mock Tudor." Tickets available at TicketMaster outlets. Charge by phone at (206) 628-0888 - \$25 in advance

Noggin, Dead Air Fresheners, & Early Morning Initials
Saturday, Sept. 18 @ 9 PM
Aardvarks (Formerly known as Bulldog News) 116 4th Ave--All ages \$3

Polecat, Once for Kicks, Judo for the Blind
Friday, Sept. 24
Blue Mouse Theater, 2611 N. Proctor, Tacoma
A benefit for Planned Parenthood--All ages \$5
Info: (253) 627-2997

Latin Expressions Orchestra, The Jude Bowerman Band
Friday, Sept. 24 @ 7 PM
Red Square--FREE

Dirty Birds, SPIV, & Coronet 49
Saturday, Oct. 2 @ 8 PM
Capitol Theatre Backstage--All Ages \$3

SHOWS @ METROPOLIS (Formerly Liquid)
• 311 4th Ave E.
• All shows @ 8 PM
• All ages

Black Anger, Maktub, and guests
Saturday, Sept. 18--\$5

Fear, Guests TBA
Sunday, Sept. 19--Price TBA
Mike Watt, The Centimeters, & The Ruby Doe
Monday Sept. 27--\$6 advance, \$7 day of show

TSOL, The Pitz, and The Valentine Killers
Thursday, Sept. 30--Price TBA

Sir-Mix-A-Lot & The Evil Tambourines
Friday, Oct. 1--\$15 advance, \$18 day of show.

The Herbaliser, Roots Manuva, & The Heavyweight Art Installation
Saturday, Oct. 2--Price TBA

Films You Should See

"Ferris Bueller": Day Off"
Monday, Sept. 20 @ 8 PM
Evergreen's Lecture Hall 1
Sponsored by S&A--FREE

"Touching Peace With Tich Naht Hanh"
Sept. 21 @ 7 PM
Traditions
Learn about what life is like around the world.
Info: Dianne Hoglund @ 866-8444 or Chris Stepman 705-3528

Movie: "Fargo"
Wednesday, Sept. 22 @ 8 PM
Evergreen's Lecture Hall 1
Sponsored by S&A--FREE

The Schedule for the Olympia Film Society Follows

- \$6 for non-members, \$3.50 for members
- Capitol Theater, 206 E 5th Ave

"Limbo" Rated R
Thursday Sept. 16, 9 PM
Synopsis: Three people come together in frontier Alaska to face their own demons and face the nature of risk.

"Xiu Xiu: The Sent-Down Girl" R rated R
Thursday, Sept. 16 @ 6:30 PM
Synopsis: A tale of innocence lost, in which a 15-year-old Chinese girl is sent away from home for government training. In Mandarin w/ English subtitles. Shows with "Limbo."

"After Life" not rated
Sun Sept. 19-Thurs. Sept. 23.
Times: Sun @ 4 & 9; M, W @ 6:30; T, Th @ 9

PM.
Synopsis: Suspended between earth and heaven, 22 people have a week to answer the question: "What is the one memory that you choose to carry into the afterlife?" In Japanese with English subtitles. Shows with "25th Annual Best of the Northwest Film Festival"

"25th Annual Best of the Northwest Film Festival" not rated
Sun Sept. 19 - Thurs. Sept. 23.
Times: Sun, T, Th @ 6:30; M, W @ 9 PM.
Synopsis: Animation, live-action comedy and drama, documentary and experimental works from Northwest filmmakers including Olympia filmmaker Heidi Bollock, whose movie "Attic Secrets" will be featured. Shows with "After Life"

"High Risk" not rated
Friday Sept. 24 @ 8 & 11.
Synopsis: Fast-paced send-up of action movies, with Jet Li as the stunt double of Jackie Chan-like show. In Cantonese with English Subtitles.

"Election" Rated R
Sun Sept. 26- Thurs Sept. 30.
Times: Sun @ 4 & 9; M & W @ 6:30; T & Th @ 9 PM.
Synopsis: A black comedy about a high school girl who begins conquering the universe by running for student government president Shows with "Ad and the Ego"

"The Ad and the Ego" not rated
Sun Sept. 26- Thurs Sept. 30.
Times: Sun, T, Thurs. @ 6:30; M, W @ 9 PM.
Synopsis: This documentary dismantles the myth that we are immune to advertising. Screenings will be presented by Negativland member Mark Hosler. Shows with "Election"

"Willy Wonka and the Chocolate Factory" Rated G
Friday October 1 @ 8 PM & Saturday October 2 @ 2 PM.
Synopsis: ...uhh... if you don't know what this

one's about, you had a deprived childhood. This is a free Arts Walk event.

Cool Kid Events

Seasonal Celebrations @ The Puyallup Fair Fair: Sept. 10-26, Celebration Sept. 23-26
The Seasonal Celebrations exhibit will feature crafts and novelties from holiday spanning from Halloween to St. Patrick's Day. Call (253) 841-5045.

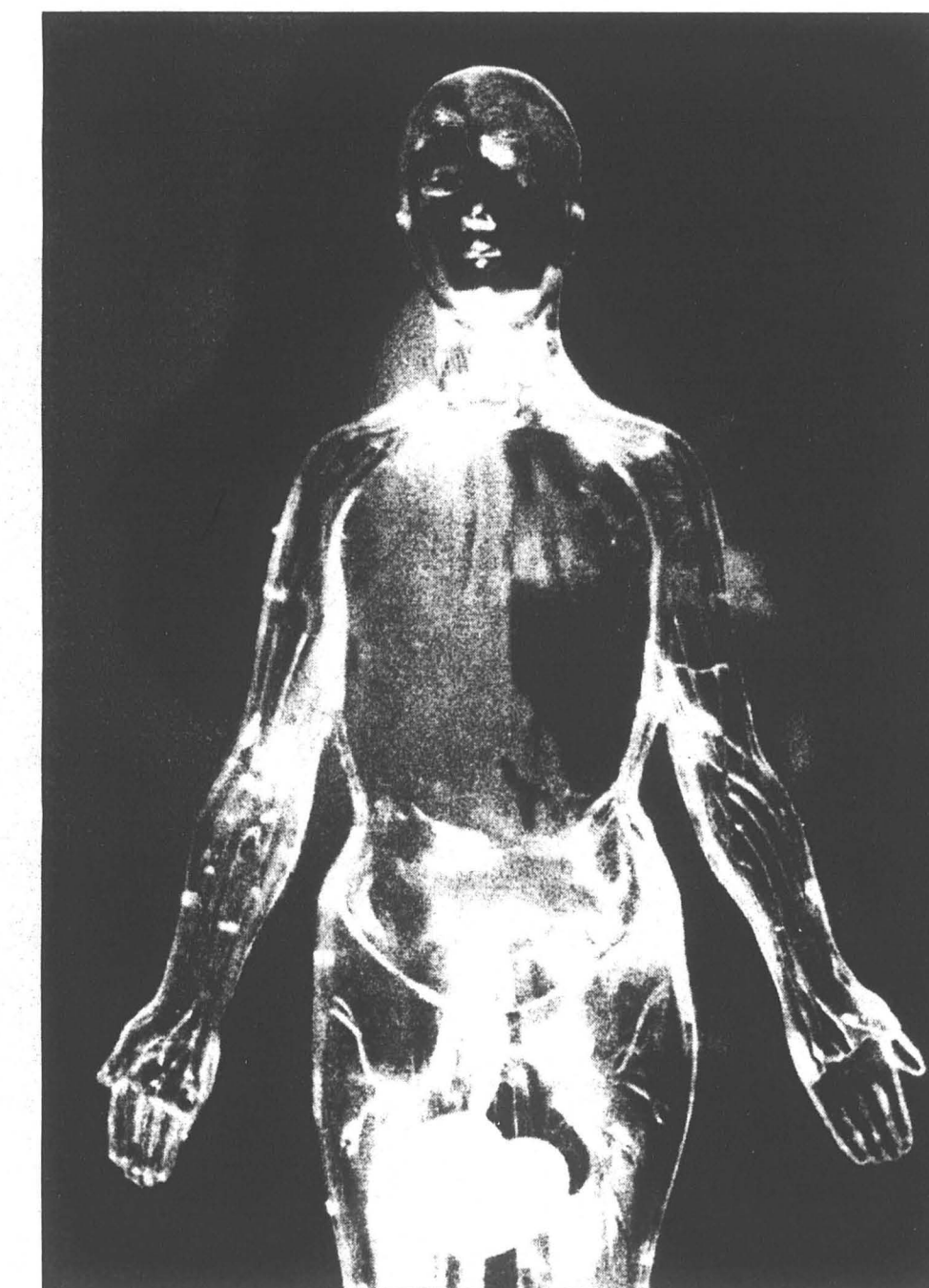
Magic: The Gathering Type 1 Tournament Saturday, Sept. 18. Entry at 11-12; Tournament at 12-5 PM
\$2.50 Entry Fee
The Matrix Coffee House
Tournament Director will draw and assign teams of two at random. Winners take all.
Info: Philip Brown (253) 581-6853

Unity March 1999
Sunday, Sept. 19 @ 1 PM
This event is in response to recent hate crimes, show your support. Gather @ The State Capitol steps and march to Sylvester park for the rally. There will be music, speakers, and open mic. For more info call 786-5498.

Arts Walk
Friday, October 1, 5-10 PM
Downtown between 4th, 5th, Capitol, and Washington.
Arts walk is an awesome event which gives local artists an opportunity to show off their talents, and community members the chance to support Olympia arts. FREE

The Harvest Festival
Saturday, October 2, 12-6 PM (rain or shine)
Evergreen's Organic Farm
Live music all day. The featured band will be River Roots appearing at 4:00. In addition to The Geoff Mullin Band (jazz), there will be bluegrass music, games, and food. For info call Molly Barber, Tom Gilbert, or Levi Todd @ 866-6000 x6145. FREE

s e e p e a g e



photos by Aaron Stevens

from the exhibit "Dirty Hands," currently on view at the Capitol Theater in downtown Olympia

We need your help spending
S&A Funds!

The S & A Board is a group of students who allocate over \$1,000,000 per year towards student groups and services.



You must be able to make a full school year commitment & be enrolled full time. Pick up an application @ the front desk in CAB 320 or see Joe at the Student Activities Fair on Sept. 21st.

Deadline: October 15, 1999 @ Noon!

This is the Seepage, a space reserved for Evergreen students of any artistic persuasion. Creative submissions from the Evergreen community are welcome and encouraged. Submissions are due by 4 p.m. Friday to be considered for publication in the following week's issue. All submissions should include a full name, phone number, and an indication of whether or not the submission needs to be returned. Written works should be submitted on disk, especially if they are verbose. Submissions should be placed in the Seepage's personal mailbox, located in the CPJ in CAB 316. Queries can be directed to (360) 866-6000 x6213.