

CooperPointJournal

ISSUE 15 VOLUME 40

A PRINT COMPILATION OF WWW.COOPERPOINTJOURNAL.COM

MAY 5, 2011

NSA celebrating 15 years in the longhouse Page 3

Welcome, incoming freshmen! Pages 4 & 5

Riot to Follow produces *Eurydice* Page 7

Kucinich calls for action

Jack Lukins

CPJ Staff

On Thursday, April, 28, Congressman Dennis Kucinich came to Evergreen for a meeting with student leaders and a well-attended forum in Lecture Hall 1. Kucinich has long been known for being one of the most liberal members of Congress, and often backs bills that go against majority opinion in the House of Representatives.

His visit to Evergreen has been a long time coming; the representative was asked to come to Evergreen two years ago but was unable, and though his visit was on short notice, Lecture Hall 1 was filled with students when he arrived on the small stage.

Before moving to the lecture hall, Kucinich met with the Geoduck Student Union and heads of several other organizations. In this short session, the student leaders asked Kucinich several questions, the first of which was about divestment. Kucinich responded that divestment "is the way of the present and the future," encouraging students to continue pressuring the administration until they are heard and said, "It's your school."

When asked about the increasing presence of military recruiters on college campuses, the representative lamented the increasing militarization of the United

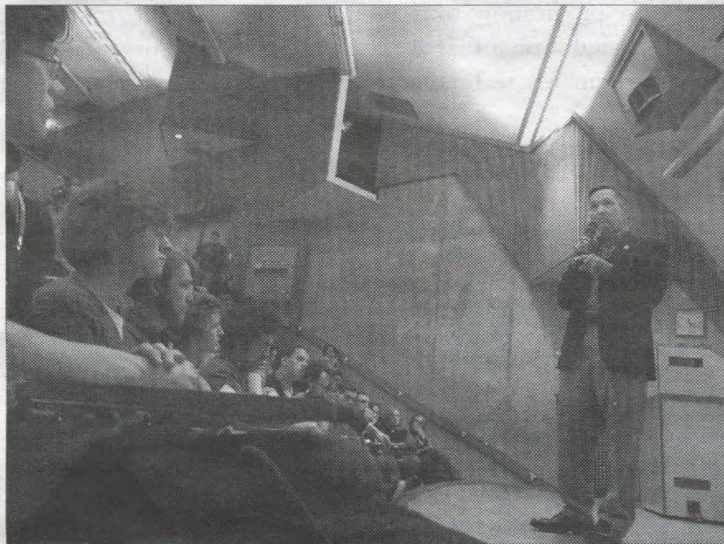


Photo: Nick Strite

Evergreen students and community members attended a presentation as well as a Q&A given by Rep. Dennis Kucinich, Thursday, April 28, 2011.

States and criticized recruitment techniques, particularly the use of video games, because they create a glorified and ultimately false image of what life in the military is actually like.

A student leader asked how to organize people, to which Kucinich responded, "Speak from the heart."

To begin his speech in Lecture Hall 1, Kucinich talked about the rapid and perpetual stream of distractions aimed at college students. "Even simple tasks are made difficult by constant distraction," he said. "Distraction keeps us from seeing what's right in front of our face." The main focus

of the speech was that if we want to make change in our government, we must start with change in ourselves.

This was a controversial sentiment and even caused one man to yell out, "This is bullshit! We aren't the problem, the politicians are." As the man reached for the door to leave, Kucinich asked him to stop and hear him out, before approaching the man and explaining his position.

By the time Kucinich was finished explaining that he believed the government was a reflection of our society, the man had taken his hand off the door and listened intently for the rest of the forum.

It was the calm and reasoned responses of Kucinich that kept the discussion together, despite the myriad reservations that many Evergreen students feel about the government and the role corporations play in politics.

But these were concerns Kucinich also addressed. A student asked if capitalism is a moral system. Almost immediately, the representative answered, "No." Later in the discussion he said, "There should be a constitutional amendment that bans corporations from taking part in the political process."

Many of the questions and much of the discussion revolved around the feeling that the U.S. government is so far removed from the will of the people that nothing we can do will change it. Whether or not this is true, simply having a politician take the time and come speak directly to students encouraged many attendees.

Kucinich stayed late to answer more questions and had conversations with several students, as well as grabbed a meal at the Flaming Eggplant.

For years, politicians have raged and ranted about the dangers of an Evergreen-style education, but Kucinich stated, "The most important thing I learned in college was critical thinking." Maybe we're onto something.

A-Dorm condensed

Sabra Chandiwalla

CPJ Staff

At the beginning of every spring term, A-dorm undergoes a process known as consolidation. This process is meant to empty out entire sections of a floor so that the students attending Evergreen during the summer term will have a place to stay. According to Mike Sledge, the Assistant Director for Residential Life, consolidation is a necessary process because summer students will begin arriving during week nine of spring term. "It's less stress for those moving in spring quarter," said Sledge, "to not have to contend with people already living on the floor who have been there all year."

The consolidation of A-dorm happens during the second week of spring term, but only people living in a space with 50% or less occupancy will be consolidated. This means that if you live in a double room and share a bathroom with the room next to you but you don't have a roommate or neighbors, or if you are one of the only people living in a suite of four or six, you will more than likely be consolidated.

Sophomore Alex Wood said, "I was pretty upset at first...[but] I was given options of moving into another double with a roommate in A-dorm or moving into an unoccupied double in C-dorm...I'm more okay with the move now. It's still kinda weird, but getting a double to myself was nice."

This year, only 12 people were consolidated, opening up 14 doubles and one five-person suite. Each person who was being consolidated was informed at the beginning of week two, so they would have maximum options as well as first pick for new housing. No one else is allowed to move until week three of the quarter. Sledge said, "When week three began, we didn't allow anyone to move into A-dorm for awhile to allow optimum options for those being consolidated."

Freshman Martine Jacobs said, "It was a little frustrating because I took last quarter off to go to China, and when I came back for this quarter, I tried to move back into my room in A-dorm, which was still empty, but they wouldn't let me because of consolidation. Now I'm getting used to living in a new dorm with new people."

For those of you planning on living in the dorms next year, be aware that come spring term, if you are living in a suite in A-dorm with 50% or less occupancy, you might have to move.

Cindy Sheehan comes to Evergreen

Erin Finch

CPJ Staff

Controversial anti-war activist Cindy Sheehan spoke to a crowd of roughly 70 students and community members in the Evergreen library lobby, April 27.

Sheehan began her political career in 2004 after her son, U.S. Army Specialist Casey Sheehan, was killed in action in the Iraq War.

Her visit was part of a national speaking tour with fellow activist Phillip Locker of Wisconsin, speaking out against the Obama administration's participation in

the ongoing wars in Iraq, Afghanistan, & Pakistan, and budget cuts to social services.

The event was organized by the Socialist Alternative, a student group dedicated to promoting socialism and progressive politics, and co-sponsored by Committee in solidarity with the People of El Salvador, Mideast Solidarity Project, Fellowship of Reconciliation and Veterans for Peace, Rachel Corrie chapter.

Locker opened the proceedings with a 20-minute discussion of the budget protests taking place in his home state. He laid out the reasons that he felt the

movement failed to block legislation and cuts pushed by the governor's office and Wisconsin legislature.

"I don't think it would be right to say that protests are useless; protests are crucial. They are a crucial first step in building a movement, in rallying opposition, in educating people, in mobilizing people. But we also have to recognize that they are not sufficient. When on key issues the corporate elite is prepared to wait out protests, ...and brush them aside," said Locker.

See more online at cooperpointjournal.com



Photo: Erin Finch

Sheehan spoke passionately in the Library Apr. 28. Her visit was sponsored by Socialist Alternative.

What you're missing on www.cooperpointjournal.com

THE WIDER WORLD: STRENGTHS AND FAULTS OF A FERVENT ACTIVIST

Mark Ciccone picks apart renowned activist Cidy Sheehan's appearance and speech at Evergreen last week and discusses where she, as well as the government, went right and where they went wrong.

In the Queue

Check out Jason Trent's review of Netflix Instant Queue movies. This week, Jason reviews Dogtooth for the viewers at home.



Medeski, Martin, and Wood to Play at Evergreen

Read about the Medeski, Martin, and Wood show occurring on Friday, May 13th at the CRC. Tickets are 15\$ in advance and 20\$ at the door for students.



cooper point journal

Business

Business Manager

Galen Radtke

Associate Business Manager

Jack Lukins

Interim Ad Manager

Eric Spahr

Ad Designer

Available

News

Editor-in-Chief

Erin Finch

General Managing Editor

Jo Sahlin

Content Managing Editor

Darren Woods

Print Layout Editor

Meagan Thompson

Audio/Video Coordinator

Dalton Short

Calendar Coordinator

Catherine Nolan

Letters & Opinion Coordinator

Melkorka Licea

Campus Life Coordinator

Closed

Sports & Rec Coordinator

Lewis Mikkelson

Comics Coordinator

Grayson Del Faro

Photo Coordinator

Nick Strite

Copy Editors

Faith Coben

Available

Page Proofs

Faith Coben

Available

Photographer

Kevin Alexandrowicz

Reporters

Sabra Chandiwalla

Available

Available

Advisor

Dianne Conrad

Associate Advisor

Seth Vincent

Contact

Office

CAB 332

News

(360) 867-6213

Business

(360) 867-6054

Email

cpj@evergreen.edu

Free distribution is limited to one copy per edition per person. Persons in need of more than one copy should contact the Cooper Point Journal business manager; when appropriate, the business manager may charge \$.75 for additional copies.

The Cooper Point Journal is printed on recycled newsprint using soy ink.

© 2011 Cooper Point Journal

GPU VISUAL ART CONTEST!

How: www.cooperpointjournal.com
When: Before May 17th

Why: Because we love art.

Give art!
Win contest!
Get featured!

The CPJ membership and up to five interested students will decide the winning entry on May 17. The winning art piece will be featured on May 20 in black and white in the newspaper, and in color on the website. The artist can opt, before publication, to receive an "artist spotlight" that will accompany their piece. All forms of visual art in digital format that are also acceptable for public display will be accepted. Art will be judged on aesthetics, originality, technique, and relevance to Evergreen. We require at least five entries to run the contest.

Look and see with A.R.G.

Shaun Coates
 Student Contributor

What is an A.R.G.? An Alternate Reality Game is a game that is played in real life, by intertwining a fictitious plot throughout multiple forms of media. Players participate by utilizing the web, solving puzzles, finding physical locations, telephones, etc. Often times, an A.R.G. is created to help market a product. "I Love Bees" for Halo 2, and "Why So Serious" for The Dark Knight are two of the best examples. Although not sure bets, A.R.G.s have proven to be very effective at generating buzz around a product (both Halo 2 and The Dark Knight were record setters).

An A.R.G. works on many levels. If set up properly by the puppetmaster, there will only be an initial start-up cost. The game then sustains itself. To do this, all elements must have some capacity for remaining! Another great aspect of an A.R.G. is the prospect for word-of-mouth advertising, which is the backbone of success for viral marketing campaigns.

The final reason this form of marketing can be so effective is its ability to engage with the player. This engagement can even be a two-way street, with less permanent mechanisms.

What should be of special interest for all of you future NPO leaders & social entrepreneurs out there is the potential for an A.R.G. to initiate social change. By controlling the framing that is used in the plot of the A.R.G., we can control the emotional response that players will experience.

We can create fun and exciting ways to change people's perceptions while at the same time engaging them. This keeps them connected. If you wish to learn more about this, I suggest you listen more to my life coach Dr. Carter, who once said Dr. West was one of the brightest. We's about to go H.A.M.!

We are looking for You!

The Super Secret Society of Ancient Alien Theorist



Join us on Facebook!

Synergy: growing energy



Kelsey Sidell
 Student Contributor

May 9 through 13, Evergreen is hosting its tenth "Synergy: Sustainable Living" Conference at various locations around campus. Throughout the week, different events, film showings, lectures, and discussions will be held to educate community members about sustainability and encourage participation in the sustainability movement.

Each day has a theme: Monday's is Energy, Tuesday's is Ecosystems, Wednesday's is Community, Thursday's is Food, and Friday's is Skill Sharing. There are 23 events total.

"Every year there is such a variety of different speakers," said Mary Craven, each year's lead adviser of the Synergy Conference. Often, Evergreen graduates even come back to speak, and this year's graduate speaker is Marisha Auerbach.

"She is going to be talking about how we can incorporate conflict resolution and consensus building into our processes," said Senior Dani Madrone, coordinator of The Clean Energy Committee. "The thing with

the sustainability movement is that it's going all sorts of directions, and there is a lack of consensus."

Madrone is organizing the Synergy conference for the second year in a row. She picked the events based on her involvement in the Evergreen community in regards to suitability and the issues and events that have happened on campus recently. For example, the controversy surrounding the use of biomass energy on campus prompted a day focusing on energy.

The Synergy Conference is predominantly funded by The Clean Energy Committee, in cooperation with various student groups including The Flaming Eggplant, Community Gardens, Meals With Friends, and several Evergreen faculty members.

"The way our society is set up right now is not sustainable, and we can either wait for it to collapse or do something about it now so that we have new, resilient systems to fall back on," said Madrone.

"After 10 years this is something the Evergreen campus can be proud of," said Craven.

A few of the conference events:

Marisha Auerbach is speaking on Tuesday from 12:30 pm to 2:30 pm about permaculture and gardening.

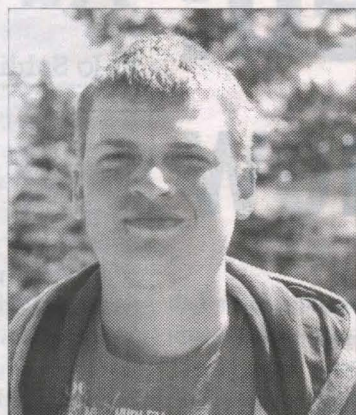
Monday from 11:00 am to 1:00 pm, the film "Gasland," about the use of natural gas, is being shown in Lecture Hall 1. Later that night, from 6:30 pm to 9:30 pm, in Red Square if the weather permits and in the Longhouse if the rain drives the event indoors, The Clean Energy Fair will take place, and two bands will be playing music through a sound system powered by bicycling.

Wednesday night, speaker Shelly Vendiola will be in Seminar II C1107 from 7:00 pm to 9:00 pm.

On Thursday from 10:00 am to 12:00 pm, starting at the Longhouse, there will be a walk around campus to educate participants about the edible plant life at Evergreen.

The Synergy Conference's final event is an "avant-groove" funk and hip-hop influenced jazz concert at 8:30pm in the College Recreation Center. This event is the only one during the week that costs money. The tickets can be bought in advance in the Evergreen Bookstore for \$15 in advance, or at the door for \$20.

What tricks did you use to survive freshman year?



Tyler Luce
Senior
My brother being here. He was old enough to buy beer.



Emma Loftis Sophomore
Katharine Stiteler Junior
I went to the corner store almost daily to just buy candy.



Abraham Tedesse
Freshman
Adderall, lots and lots of Adderall. 30mg, lasts for eight hours.



Nick Bevan
Freshman
Don't sweat the social stuff because you will have time, and really embrace the fact that your program offers you a really good community to build on. And also, don't smoke as a social tool.



Michelle Mcallister
Senior
Asking a lot of questions and being okay with being wrong.



Tom Carlson
Sophomore
Buy good footwear so your feet aren't soggy and cold all day long.



Imogen Ker
Freshman
I met a bunch of people. I have a lot of friends and that's kind of what prevented me from doing well in school.

By Jack Lukins, Kevin Alexandrowicz, and Nick Strite

Celebrate with Powwow and Coastal Jam

Ataya Cesspooch
Student Contributor

The Native Student Alliance (NSA), along with the Longhouse and the RBCD program, has been working hard this year to revive a familiar tradition: The Evergreen State College Powwow! Once an annual event, the Evergreen Powwow had been on hiatus for a number of years. NSA was inspired to bring the Powwow back after learning that 2011 is the 15th year anniversary of the Longhouse (House of Welcome).

NSA not only wanted to bring back a long-standing tradition, but wanted to introduce a Coastal Jam to the campus community to honor the Coast Salish tribes indigenous to this area as well. The Coastal Jam will take place at the Longhouse on Friday, May 6th at 5pm, and the Powwow will take place inside the CRC (gym) on Saturday, May 7th.

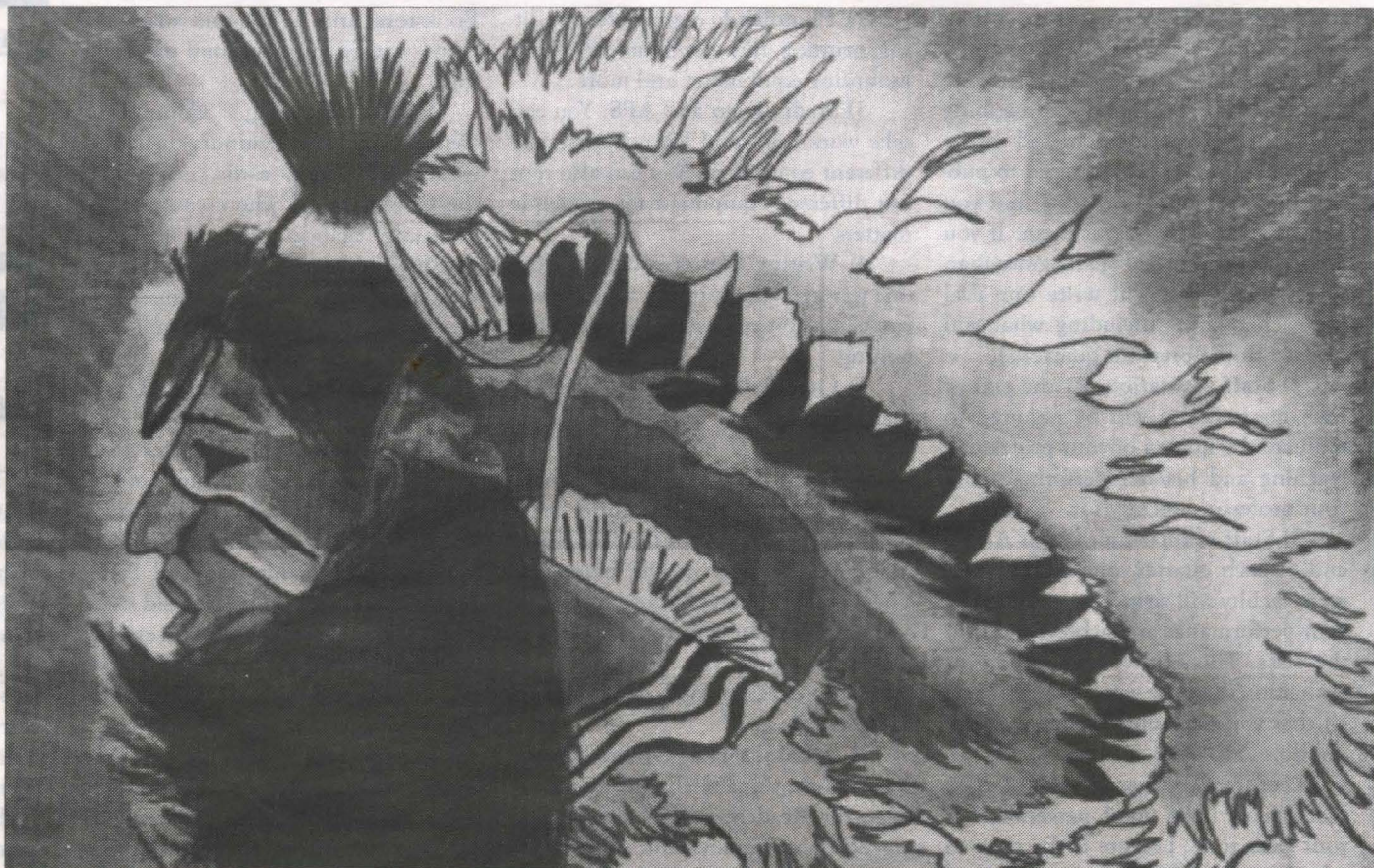
If this is your first Powwow, you will want to be inside the gym and seated in time to see the first Grand Entry at 1pm (there is a second Grand Entry at 7pm). A powwow is a community gathering that began among the tribes of the Great Plains around 100 years ago.

This intertribal event is a celebration of Native American dance, song, and art, and has long been a social gathering for Native people to connect with family, catch up with old friends, and make new ones.

A coastal jam is a similar gathering for canoe families of the Pacific Northwest to partake in feasting, drumming, singing, and some dancing.

Both events are free and open to the public. However, there are strict protocols of behavior that must be observed at both events.

Come and witness the beauty and strength of our people! We are still here 49,500 years later!



Artwork: Ataya Cesspooch

The powwow celebrates Native American dance, song, and art.

Protocol & Etiquette at Coastal Jams & Powwows:

1. These are sacred spaces. Please do not disrespect them by showing up under the influence of alcohol or drugs.
2. There is no picture taking or recording of any kind allowed. Exceptions are only with the explicit permission of the MC, powwow committee, dancers, and drummers.
3. Listen to the Master of Ceremonies; he coordinates the powwow and will announce who is to dance and when. Do not

enter the arena unless you have been invited to do so.

4. Dancers and Elders get priority seating around the edges of the arena. Do not touch anyone's regalia without their permission.
5. Only the drummers may sit at the drum. Do not touch the drums.
6. If you are not wearing traditional regalia, you may dance only to social songs (two-steps, Owl Dance, Specials, honorings, etc.) or when specifically invited by the MC. During "Special" songs, stand in place until

the sponsors of the song have danced a complete circle and have around you, then join in. If you are not dancing, continue to stand quietly until the song is completed.

7. Stand during the Grand Entry, Flag Songs, Invocation, Veteran's Songs and the Closing Songs.

8. If you are ever unsure about procedure or etiquette, please check with the MC, Arena Director, Head Dancers, or powwow committee. We will be glad to help you with your questions.

Evergreen Defined: Words you should know

Meagan Thompson

CPJ Staff

As an incoming student at Evergreen there are a few words you need to know. Evergreen isn't like most universities and therefore comes with it's own jargon.

These words are used every day at Evergreen and you should get used to having them in your personal vocabulary or else you will look like a fool and get schooled.

Greener: You. Any student of The Evergreen State College.

Geoduck (goo-ee-duck): Evergreen's mascot, a large clam found in the Pacific Northwest.

Program: Instead of individual classes, Evergreen has block programs which have an overall focus. Different subjects are studied within that focus

Seminar: Just another word for discussion, but here at Evergreen, seminar is a tool that is used to find depth within the reading. You will be expected to participate and help further any discussions held within seminar, so do the reading and come prepared to learn more about yourself, your peers, and your professor

Eval or Evaluation: Evergreen's equivalent of grades. They're important, so don't think of it as a way of not having to bring home A's, because each word typed in your evaluation will be read by your future employers, if not your parents. There are three types of evaluations you need to know about:

1) **Self evaluations:** You write one at the end of each quarter, describing what you learned and achieved in the program. You are not required to publish these to your transcripts, but you will be required to write them. If you are in a program that spans more than one quarter, you will write one eval for each quarter including what you learned in the previous quarter(s).

2) **Staff evaluation:** At the end of each quarter, you will be required to evaluate the quality of your professor's teaching and his/her performance as your professor and advisor.

3) **Staff evaluation of you:** At the end of each quarter, one of your program faculty will write an evaluation of your performance and achievements in the class. This is the most important evaluation, because what it says reflects all that you have done in class or did not do.

Lecture: The basic form of class that makes up a good percentage of your class time. Lecture is the time to take notes and listen, because half of what you will need to know for the program will be given to you in lecture.

Contract: A contract is one of Evergreen's independent learning options that allows a student to work outside the classroom strata and develop their own learning plan alongside a faculty sponsor. Contracts allow you to delve deeply into a subject of your choosing structured around what you want to learn. Contracts are recommended for upperclassmen, and most faculty will not sponsor a freshman contract

Sem I: Seminar One building houses the health center, where you can get vaccinations, condoms, and counseling services, along with any other medical help you may need depending on the severity and policies. Parking Services is also housed in Seminar One. This is where you pay for parking permits and tickets. You can find police officers who will help you with anything from burglary to being locked out of your room. You can also grab a PB&J if you are low on cash and need something to eat.

Sem II: Seminar Two building is home to many staff offices, and it will house many of the classes you will take. The majority of the rooms are built for seminar, but there are also lecture halls and workshop rooms on the first floor of each building. Seminar Two also houses the Sem II café which accepts both cash and declining balance meal points. It is very convenient for grabbing a cup of joe between classes or on a break.

Library: Evergreen's library building houses many different offices, including the library, where you can find thousands of books as well as sound, images, and microfiche. You can also find in the library building:

1) **Computer center:** open later than the library (some days until 2 am), and there is almost always a computer available whether you are a Mac, PC, or even a Linux user

2) **Photoland:** digital photo editing, printing, film development, photo mounting equipment, and more.

3) **Media Loan and APS:** You can take workshops and learn how to use different equipment. You can also rent out different equipment for academic matters.

4) **Writing Center:** offers one-on-one writing help, tutoring, and various workshops on evaluations and creative writing.

5) **QuaSR Center:** a resource for mathematical and scientific tutoring and workshops.

6) **Study Rooms:** you can check out rooms upstairs on the third floor, or you can claim one of the first come-first served rooms in the basement. There are also many comfortable nooks and crannies you can find all over the library to study. You can also bring munchies because food is allowed in the library.

7) **Administrative Offices:** Deans, Admissions, Financial Aid, Cashier, Registrar, Academic and Career Advising, Student Employment; you will become very familiar with the first floor of the Library building over your four years at Evergreen.

The Longhouse: Various multicultural and community events, workshops, festivals, and other large celebrations will be held at the Longhouse.

Arts Annex: Houses many art studios that work with clay, stone, wood, metal, and glass productions. There are instruments, equipment, critique rooms, casting and kiln workspaces, and other work areas.

Lab I: There are many faculty and staff offices in here, as well as science

laboratories and classrooms and a Lab store which provide various class supplies and some snacks.

Lab II: more faculty and staff offices, science labs, some additional art studios, Computer Applications Lab (CAL), and Key Services, which makes keys.

CRC (College Recreation Center): houses the main gym, swimming pool, rock climbing gym, racquetball courts, cardio room, rowing room, workout rooms, weight room, locker rooms, equipment checkout, sports medicine room, and many athletic activities such as Zumba and yoga are taught weekly.

COM Building (Communications): houses more faculty offices, design lab, 3-D animations lab, audio recording studio, musical technology lab, rehearsal spaces, musical instrument checkout, the Experimental Theater, Recital Hall, & Student Cabaret, costume and scene shop, film production labs, performance art practice rooms, and more.

CAB (College Activities Building): houses all major food options on campus: the Greenery (the main cafeteria) where you can use block meals daily, the Flaming Eggplant (a student run café), and the Marketplace which accepts declining balance (meal plan) points and has many different food options. The CAB is also home to Student Activities, the Cooper Point Journal, KAOS radio, and the Evergreen Bookstore, and ATM's and snack machines can be found around the building.

HCC (Housing Community Center): includes Laundry machines (which take debit cards, not coins), the Corner Store, where you can use declining balance points to buy food or household goods, an ATM, study or relaxation areas that sometimes hold events, the mailroom and mailboxes, and the Free Store.

A-Dorms/Prime Time/RAD services: A-dorm is home to more than just freshman housing. The first floor contains games tables from pool to ping-pong, the laundry room, and a sun room. The second floor is home to the Greener Organization and Prime Time, where workshops are held weekly. The third floor holds RAD services, where you will find your RD offices, vacuums for rent, and information about housing and cleaning services.

Lecture Hall: There are five large lecture halls in the circular building across from the library. There are often large workshop lectures or performances that go on in the lecture halls, as well as some classes.

The Beach: Evergreen owns a lot of wild property that includes hiking passages down to the beach along Budd Inlet. There are often bonfires at night, and a few programs take retreats down to the beach.

Organic Farm: Evergreen has its own organic farm that is run by students and some faculty. The farm often sells its organic goods around harvest time, and the hike down to the farm can be found just off of C-Lot. And there are chickens...

Advisors: They'

Jo Sahlin

CPJ Staff

When you're a freshman, everyone tells you to seek out resources and get involved. But how? How do you get the most out of your program, or even decide which program to take? How do you deal with choosing the wrong program, or ensure that you stay on track throughout your four years?

At Academic Advising, there are seven faculty advisors and as many peer advisors, all available to help you negotiate the sometimes tricky depths of Evergreen's academic and campus life.

Most advisors recommend visiting academic advising some time during your first quarter at Evergreen, just to get familiar with the advisors or decide which advisor could help you throughout your college career.

Developing a 4-year plan, especially if you're interested in getting a

master's degree or go to grad school, is a great way to meet the expectations of Evergreen. If you have a 4- or 6-year plan, it's a good idea to talk to an advisor about what you want to do at Evergreen and get their input on your plans.

Peer advisors can also help you with information about campus life and your experiences with programs. If you're unhappy in a program, peer advisors can also help you figure out what questions to ask those advisors and recommend resources for you, since many have had similar experiences.

Michael Cliffthorpe, a peer advisor, says that if you're considering study abroad, you should talk to a peer advisor for the MIT program. He also works with students on Gateways, Rashida, and coordinating athletes and coordinating with the Academic Advising, and Teresa is a backup study advisor.

Get involved w



Jack Lukins

CPJ Staff

The Geoduck Student union is the official voice for the student body, and was created with the intention of serving as a plat-

form for students to express their concerns and have their voices heard by their peers.

The GSU has a lot of resources and faculty, which are available to direct student's concerns to the people who can help and have discussions to fix issues around campus.

The GSU also has a liaison who serves as a bridge between the person who spends their school days at the capitol with the state and interacts with legislators and other student board members. The Clean Energy Act, which is approved by the state, plays a decisive role

Getting active

Darren Woods

CPJ Staff

TESC's College Recreation Center offers various options for students looking to stay active. From the casual student looking to try something new or blow off some steam to the experienced competitive athlete looking for a challenge beyond their academics, the CRC is Evergreen's most valuable resource to achieve most any recreational endeavor.

Evergreen has seen its recreation department flourish during the 2010-'11 school year, adding classes such as Hatha Yoga, Tai Chi, Breath Work/Meditation, and a Stretch and Destress class to help soothe tense minds and bodies.

For a low impact but challenging exercise session, there is also an aqua aerobics class offered once a week in Evergreen's pool. Geoducks looking to challenge themselves on another level have an opportunity to try rock climbing at Evergreen with the newly remodeled climbing gym. A beginner rock climbing class is also offered twice a week for those

with little to no experience. A list of class offerings is available on the Evergreen recreation website at <http://www.evergreen.edu/recreation/classes.htm>. Contact your advisor for more information or to change to your preferred numbers.

For Greeners who want to take their individual experience to the next level, the facilities cater to this desire. In addition to the rock climbing gym, there are courts, a covered outdoor pavilion, playing fields, and a dirt track. Also available are a cardio room, weight rooms and a weightlifting area. Most lifting needs are met with equipment checkout, climbing shoes, bask-

For the experienced athlete looking to keep their spirit primed, there are many options such as crew, rugby, frisbee that meet your needs. Evergreen also boasts several intramural sports like men's and women's soccer, cross country, field, men's and women's volleyball, and women's volleyball.

You're here to help

or going to graduate way to talk about your Evergreen. Even if you e-year plan, let alone a , it's a good idea to talk out what you want out d get some recommen- grams and professors. s can help with infor- mpus life and specific n professors. If you're program but aren't cer- ions to ask an advisor, an also help pinpoint recommend an advisor any have specialty areas. iffthorne is in charge Jean Eberhardt is a re- IT program. Dalya Per- dents in First Peoples shida Love works with oordinates Primetime Teresa Woods-Santoso dy abroad advisor and

specializes in students studying anthro- pology. Sara Martin and Kitty Jones are the director and assistant director of Academic Advising, respectively.

When you go into Academic Advising (which is located in the right wing of the second floor of the Library, 2100), have your student ID card and a few questions ready. You may want to make a specific appointment, especially if you know which advisor you want to see. Otherwise, there are walk-in hours nearly every day, but you may need to wait up to 30 minutes to see an advisor.

Be on the lookout for info sessions and planning workshops, especially about graduate programs and studying abroad. These are introductions to things you could be interested in but may not know enough about to ask questions. Then if you're still stuck, worried, or curious, you can plan to meet with an advisor to get more information.

with the GSU

ents to express con- e them addressed by

has access to staff hich allows them to 's concerns straight who are responsible ussions about how ound the school.

also employs a stu- ves as Evergreen's State Capitol. This ls the majority of days working inside with their counter- her schools around interacting face to lators. Members of : boards, including nergy Committee, y the GSU, so they e role in helping to

shape the groups which represent Evergreen.

In the few years it has been around, the GSU has been a part of some of the major decisions on the Evergreen campus. They organized the divestment vote, which the administration has yet to honor, and they signed on their support to the successful campaign to search for alternatives to biomass gasification.

Without student participation, the GSU doesn't represent anyone. So if you have issues that you want addressed or questions you need answered, find the GSU office in the S&A room on the third floor of the CAB building.

Jack Lukins is currently a member of the Geoduck Student Union.

at Evergreen

o experience. A full erings is available on recreation website at evergreen.edu/recre- tm. Classes are sub- to suit participation

ers who seek a more erience at their own ties within the CRC esire and are plenti- to the pool and rock there are racquetball d outdoor soccer pa- fields, and a 400-me- also within the CRC om, spacious dance veight room to suit needs. The CRC's ckout desk also has basketballs, rackets. xperienced athlete p their competitive here are club sports rugby, and ultimate eet regularly. Ever- sts seven intercolle- men's and women's country, track and l women's basketball olleyball. The Ever-

green State College competes in the National Association of Intercollegiate Athletics (NAIA) and the Cascade Collegiate Conference (CCC)

Those interested in competing for any of Evergreen's intercollegiate sports teams should contact the respective coaches before orientation week in order to optimize a smooth transition onto the team, because many teams begin their workouts and seasons before school starts. Another tip to those interested in participating in any of the intercollegiate sports is that they should attain three things before coming out if they haven't already done so: all student-athletes are required to have a physical from a doctor, health insurance, other eligibility requirements which vary depending on whether the student-athlete is a transfer or incoming freshman from high school.

Eligibility requirements can be found at: <http://www.evergreen.edu/athletics/eligibility.htm>

A full list of coaches and their contact information are available at: http://www.evergreen.edu/athletics/prospective_athletes.htm

Choosing your program

Meagan Thompson

CPJ Staff

While you may have heard many stories about partying, liberal activism, and tree people, what is really unique about Evergreen is our interdisciplinary, collaborative, and team-taught academic programs. As an incoming student at Evergreen, how you go about choosing and registering for the right program is important. Evergreen is unlike most colleges, because you are not required to take basic core programs that other universities require freshman to take.

Instead of taking a handful of basic core classes that generally reinforce what most students should have already learned in high school, Evergreen provides a variety of quarter-long 12-16 credit programs that combine the information you would learn taking four to six individual classes at a standard college.

Choosing the right programs is the most important choice you will make at Evergreen. The programs you choose will define what you do here, the type of student you will be, and who you will be at the end of your four years at Evergreen.

The first step in picking a program is to do your research. You should become very familiar with the online academic catalog that can be found via the current students section on the Evergreen website. The catalog allows you to browse through all programs offered in the coming quarter. Each course is labeled from 2-16 credits, how many quarters it is given and which ones, who the faculty are, which class standings are accepted into the program, and what subjects are covered in the course.

When looking at the basic list, you will need to use sorting options. First, you should make sure only programs that accept freshmen are selected. After you remove upper level courses, you will be presented with three types of programs: freshman only, lower division, and all-level.

Freshmen-only programs are basic introductory courses that provide more structure for incoming freshman. They provide workshops and informational presentations that teach students how

to learn at Evergreen and include weekly tips on academic success, according to academic advisor, Teresa Woods-Santoso. These programs give more support but require just as much work as an all-level program would.

Lower division programs are similar to freshman-only courses, except that they include sophomores. These programs also provide support for students, but less than that of a freshmen-only course because most sophomores will have already moved past the level of support given in freshmen-only courses.

All-level programs are available to any student and do not provide the support given in lower division and freshman-only programs. Students who enroll in these programs are expected to be able to learn without having their hands held. They are recommended for incoming students that are prepared and have a basic idea of what they want to do at Evergreen. The workload is not necessarily heavier in an all-level program, but higher quality work will be expected of the students who enroll in the courses.

Depending on what you are interested in studying, you should not count out all-level or freshmen only courses, since there may be program you are interested in, and it is important to focus on what you are interested in. "Students should pick something they are interested in, not what they think is going to be good for them," said Woods-Santoso.

After you sort out upper level programs, you can narrow your search down to what you are interested in. Pick a few topics you want to study, and find the programs that include one or more of those subjects. Make sure you read each program description closely to decide if you are interested in it or not. If you simply browse the contents, you might be surprised when you end up studying something you are uninterested in. If you have questions about a program, all you have to do is email the listed faculty. They welcome questions, and most check their email regularly.

Make sure that once you are finished looking over all of the programs, you come out with at least three choices, because there is a chance you might not even make the waitlist for your number

one choice. When writing down your preferred programs, make sure you record the CRN, or Course Registration Number, the five digit number that you need in order to register for a program.

You can find the CRN on each program description page. For each quarter the program runs, there will be a row with each different CRN you will need to register with each quarter. It will look like: the CRN, (credit) Level, followed by a five digit number, then credit available to be earned in that quarter, and the class levels that can take the program.

On registration day, you want to make sure you are logged on and ready to register ten minutes before your time ticket allows you to register. Make sure you refresh your page and have your CRNs on hand so that you can register as fast as possible. Each second you take lollygagging is a second that someone else takes your spot in your number one program.

If you are waitlisted for your first choice, get your second choice in ASAP, because that course might be full as well. If you are waitlisted for more than one course, make sure you register for all three of your choices. If you go onto your my.evergreen.edu account, you can organize your waitlist choices.

Click on "registration options," then go to add/drop, and you can put your options in order so that when/if space becomes available in your number one choice, you will be transferred into that program. To check your waitlist position for each program you are registered for, go to "student registration details," and your waitlist position will be shown alongside each program you attempted to register for.

If it is the first day of classes and you are still not registered for the program you want to be, in you should go to the class you want to be in. Even if you are low on the waitlist, chances are, not everyone will show up for the first class and you have a high chance of being admitted.

Good luck with registration, and remember to find something you are interested in because you are more or less stuck with the same program for ten weeks.

New student survey is in!

Mya Starling

Student Contributor

The results of the New Student Survey now await your eager curiosity, resolving the chronic misunderstanding of why certain students are attracted to Evergreen.

Administered by the Office of Institutional Research and Assessment, the New Student Survey reflects students' backgrounds, expectations, and aspirations upon enrollment at Evergreen.

The revealing spectrum of respondents—including first time-first years, transfers, Tribal students, Grays Harbor College students, and TESC Tacoma students—further illuminates the dynamic of the Evergreen community.

In an effort to stay informed of the student body's composition and opinions, the results of the

New Student Survey provides an often brutally honest voice to the incoming Evergreen students.

Responses to queries such as "Was there any information about Evergreen that was hard to find?" and "...describe the primary field or fields of study you plan to focus on" are an ideal opportunity for administration and faculty to co-evolve with the insights of each incoming class.

Furthermore, the information detailed in the results sheds a light on the demographics of the Evergreen community, so you can better know your fellow students.

For example, did you know...

* 21.5 percent of first time, first year students and 31.1 percent of transfer students are first generation college students?

* 16.6 percent of first time, first year students and 15.5 percent

of transfer students identify as Lesbian Gay Bisexual Transgender or Queer?

* 54.4 percent of first time, first year students and 58.3 percent of transfer students received financial aid that must be repaid

Of the 1468 new students surveyed, 929 completed the survey. The survey's incentive, a \$200 bookstore credit, was awarded to Deborah Brookshire. Evergreen's Office of Institutional Research and Assessment collects and reports data to assist faculty, students, and staff to better understand teaching and learning at the college as well as to respond to students' opinions and needs.

Find more interesting statistics and the individual responses of the students themselves on the website of the Office of Institutional Research and Assessment.

To the Board of Trustees: 'Put your money where your mouth is'

TESC Divest

Student/Alumni Club

In the spring of 2010, the student body of The Evergreen State College cast a historic vote in support of human rights. It was the first student-wide vote of its kind in the nation. Two resolutions were passed: one calling for divestment from companies profiting off of Israel's occupation of Palestine, and the other for the creation of a CAT Free Zone, prohibiting the use of Caterpillar Inc. equipment on campus. The result of the vote was a resounding victory for both resolutions, passing with 79.5% and 71.8% respectively.

The voter turnout set a record at Evergreen, and was more than double the average turnout in student elections nationwide. Following the ballot, the Geoduck Student Union unanimously passed resolutions supporting the student vote and directing the Evergreen Board of Trustees to respond in a timely manner to the request of the student body.

With this kind of unifying support at Evergreen, one would expect quick and decisive action by the Board of Trustees. This would be the perfect opportunity to put the social justice values purported by the new mission statement into action. Yet the Board and the administration decided to work in private, without student input, to squelch student support for human rights

and equality in Palestine.

The students have attempted to work with the administration and the Board of Trustees in good faith through the proper channels since the passing of the resolutions last spring. Unfortunately, the Board of Trustees refused to put the resolutions on the agenda of their meeting and discussions have only taken place off the record, without transparency and excluding student input. On top of that, Evergreen President Les Purce met behind closed doors with Israeli Consul General Akiva Tor and formally dismissed the vote for divestment. According to public records requests, Stand With Us, a right wing pro-Israel group who have blatantly attempted to intimidate and disrupt a peaceful gathering of anti-occupation Jewish organizers in the Bay Area, was given assurances by the Vice President's Office of Student Affairs that divestment is off the table.

These actions set a precedent for the college to dismiss student-led initiatives. By ignoring the student voice, the Board of Trustees and administration betray Evergreen's values as a student-led institution and it is a grave disappointment that the administration and Board of Trustees are unwilling to work proactively with the campus community to end the college's complicity in human rights abuses. But this isn't the first time the community has pushed for divestment at Evergreen and faced a brick

wall.

In 2003, after Evergreen student Rachel Corrie was killed by an Israeli Army Caterpillar bulldozer while protecting a Palestinian family home in the Gaza Strip, alumni, parents, staff, and faculty worked to make divestment a tangible action to bring peace and justice to Israel/Palestine. In 2005, the family of Rachel Corrie pulled their funds for the Rachel Corrie Scholarship out of the Evergreen Foundation because the foundation could not guarantee they were not invested in the company which produced the D-9 Caterpillar bulldozer that killed their daughter.

Numerous meetings between Evergreen community members, Evergreen's President, the Vice President of Student Affairs, and the Vice President of Finance took place over the years. Invited by Evergreen students, members of Jewish Voice for Peace and the US Campaign to End the Israeli Occupation presented to the Board of Governors in 2006 about the human rights abuses perpetrated against Palestinians. This resulted in no change to their investment policy, despite ongoing communications between the students, the foundation, and college administrators. In the past eight years, students, faculty, staff, parents, and alumni organized, educated, rallied, and protested. The long years of work are paying off with the support that divestment has at Evergreen.

With the adoption of a mission statement that values social justice and the support for divestment on campus, now is time for the Board of Trustees to put their money where their mouth is.

The newly formed chapter of Olympia Jewish Voice for Peace and TESC Divest asks Evergreen students, alumni, and community members to speak at the Public Comment Period during the next Board of Trustees meeting on Wednesday, May 11th at 2:45pm in Evergreen's Library Boardroom 3201. Unfortunately, for the first time, the Board has scheduled the public comment period to conflict with the Student Activities Fair and part of the Spring Academic Fair, possibly limiting the participation of the students and faculty. In the last year, all other Board of Trustees Public Comment Periods were held at 1:00 or 1:30pm. Students were not aware of this change until the afternoon of Wednesday, May 4th.

The next step for the administration and Board of Trustees to regain the student's trust is to begin to make amends for not respecting the student voice and the democratic process of the campus-wide election.

This article was the product of a collaboration between TESC Divest members Nancy Franco, Rachel Greene, Robert Jantzen and Anna-Marie Murano.

For more information on TESC Divest, visit www.tescdivest.org

The United States of us vs. them

Galen Radtke

CPJ Staff

Class ended early, and I had an hour to blow on campus before my ride home. I was wandering around the library building and stumbled across a presentation by Cindy Sheehan, hosted by the Socialist Alternative Club. At that moment, Sheehan was talking about her struggles to find a willing ear in the government, and the experience of a lengthy court trial that resulted from her protest. She mentioned how the government issued a "stay away order" against her and her cohorts, effectively barring them from the sweet spots of speaking out in Washington D.C.

Near the end of the presentation, a young man came to the microphone to ask a question. He noted that there were no arguments that challenged the views of Sheehan's group and indicated that he had no desire to insult anyone. He continued with the following points that I will paraphrase with my own words.

It should be obvious by now that people in power do not take protests seriously. It is a joke and a pantomime of the 60's that is without substance or intelligent thought behind it. All that hooting and hollering seems to be just a bunch of scared people looking for a sense of community. This mob behavior gets us nowhere and the only way to truly create change and social justice is to work as individuals, or small focused groups. He encouraged those who wanted to see change to become involved in the political system instead of fight with it.

Sheehan and her cohorts had an almost allergic reaction to his words. They avoided responding and instead attempted to wrap up the event.

Before the man spoke, I had heard nothing



at the presentation that was new to me, but to hear a fresh opinion and to see it dismissed out of hand made me angry. The man had a point worth discussing.

"I want to hear it!" I yelled. Heads turned towards me momentarily and then back to Sheehan and the panel. They repeated their intention to wrap up the event and proceeded to recover the main points of the night and their political ideals.

I couldn't focus much on what they said. I know they said that if we all pull together, we will find our strength as a big group. They insisted that it is the only way to make our voices heard. At the end of that, they began to tie in an address to the man with the following: You came here and didn't listen to anything we said, you came here with an agenda!

This is ridiculous, I thought, as the man got up to repossess the microphone. But, before he could speak, Cindy Sheehan barked, "and you aren't allowed to talk anymore!"

"Sorry if I insulted you," said the man, who then left. I was shocked, but that was how the night ended.

I didn't stop thinking about it though. I do feel that it was good to see a strong reaction coming from Sheehan's group. In contrast to the calculated response of a politician, their emotional outburst shows that they are still human beings. Just like the rest of us, they don't like having their toes stepped on.

But how could someone who has had the experience of having her free speech cut off, do the same to another?

What worries me is that while I understand that passionate belief is the driving force of any purpose, an inability to defend and evolve those beliefs by inviting intelligent discourse shows a lack of philosophical integrity and weak leadership.

In my eyes, this selfish approach to instigating social change will only result in dividing those that share the same purpose and discourage our desire to create a better world.

Bio of a transfer student: Advice for the newbies

Melkorka Licea

CPJ Staff

Melissa Miller is a transfer student from Franklin Pierce University, located in Rindge, New Hampshire. She started her college journey at FPU freshly out of high school and spent her first two years faced with the difficulties of balancing school with her social life. The traditional liberal arts school provided her with an introduction to a broad variety of studies, but didn't create an atmosphere for her self-growth.

After taking a year off, she decided to apply to Evergreen after hearing about it through a friend. She was ready to get out of New England, and she described the "timing" as being "just right".

Now, she is rounding off her education as an undergraduate student and will be heading out into the real world to test the waters. She has been pursuing an arts and psychology degree and discovered her passion for art therapy. Though Melissa could have graduated last spring, after her remaining two years of college were spent at Evergreen, she decided to stay for an extra year in order to experience a class that especially piqued her interest: Multicultural Counseling.

The class required an application process and sent her all the right signals; one of the side-notes even mentioned that if they weren't ready to "walk away from everything you've ever believed in" that this class wasn't for them.

"Just thinking about how much things have changed from last year to this year is amazing. I've done a full 180." The class has had a truly lasting effect on Miller, and she pointed out the main factors of the class as being one's "willingness to be uncomfortable and vulnerable".

However, Miller's career at Evergreen has not always been a life changing experience. She struggled at first with finding the right course for her passion of painting. She explained that last year, she "wanted to take an art class but

they only offer either really basic arts or highly advanced arts where your technique is already down". She believes that there should be more in-between classes at Evergreen that focus on "solid technique and critique" rather than merely basic skills or high levels of conceptual and theoretical thinking.

In addition, though Evergreen prides itself on independent contracts that emphasize personal growth in education, Miller believes that "in an undergrad environment, there needs to be more structure and stability and less open-endedness," referring to the looseness of deadlines. She explained, "Therefore, I would advise freshmen and sophomores to take programs, and to only begin thinking about independent contracts as a junior or senior. It takes more of a mature student to efficiently organize and execute a project." Not to say that new students to Evergreen aren't mature, but having a full understanding of how learning works at Evergreen before tackling personal endeavors is vital.

During her process of registration, Miller pointed out that "advocating for yourself" is often an important skill if one wishes to become enrolled in their desired course. Contacting the teachers prior to registration and expressing your interest in a course is always a good idea.

The evaluation process was a big transition for Miller coming from a traditional liberal arts university. She expressed the "concept of evaluations" as being "helpful, since I would like to know how I'm actually doing instead of just a letter grade." She also pointed out that receiving an evaluation of your performance as a student is more similar to the working world than merely one summative mark.

After completing the full circle of her undergraduate adventure, Miller asks incoming freshmen and transfer students to "be patient with yourself, and the way you interact with the world."

"Though everyone is impressionable coming into a new atmosphere, honoring your own voice regardless of how information is presented or others respond, is the most valuable knowledge. Give everything a second chance and don't forget to keep your judgments at bay."



Sarah Ruhl's *Eurydice*: Beautiful, terrifying, and heartbreaking



Photo: Nick Strite



Photo: Nick Strite

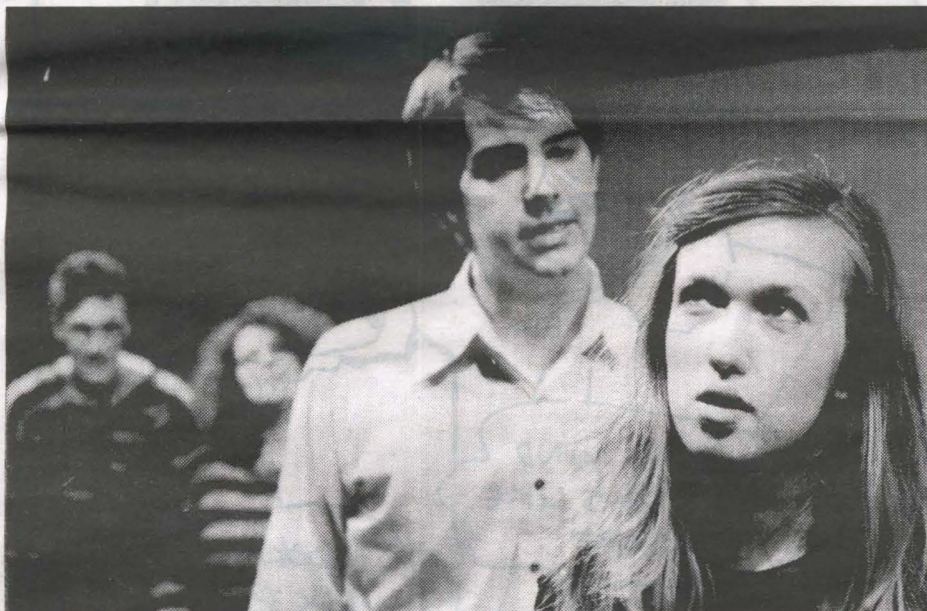


Photo: Nick Strite



Photo: Nick Strite

Faith Coben

CPJ Staff

"Eurydice," directed by Evergreen senior Miller Pyke and written by today's most talented playwright, Sarah Ruhl, is without question the most incredible play I have had the privilege to see at Evergreen this year. And I've seen almost all of them.

Jenna Vershen and Scott Anderson star as the ill-fated Eurydice and her brilliant musician husband Orpheus, respectively. Chad Law plays Eurydice's tender father, and Lazlo Steele as the childish and malicious Lord of the Underworld makes me want to hide under my seat in terror.

The three Stones, Loud, Big, and Little, are played by Zoe Shields, Sean Neagle, and Baylie Freeman. They, who "are the age of death," as Pyke says, exist in her interpretation as a millennia-old chain gang in the Underworld, whose sole purpose is to torment and make miserable the poor souls who have been unfortunate enough to end up there.

Pyke has created a show set in the 1930's that is beautiful, heartbreaking, and terrifying all at once. Vershen and

Anderson begin the show in a sweet scene as young lovers, frolicking on a beach. "It's like walking into a candy shop," said Vershen.

They have wonderful chemistry onstage, relaxing into idealized versions of each other as indeed, all couples do at the beginning of a long and emotionally fraught love story.

Things quickly take a turn for the darker, when Eurydice meets the Nasty Interesting Man, one of the Lord of the Underworld's many incarnations, moments after her wedding. Steele is magnificent in this role.

Every time he moves toward Eurydice (his consuming obsession), grips her wrist, or projects an unnerving broken grin her way, shivers run down my spine.

He orbits her like a poisonous moon around a lost planet, horrifying her with poetically disgusting lines like, "Music is two dead bodies under the covers, rubbing together to keep warm."

After Eurydice's death and subsequent descent into the underworld, she loses her memory, as all the dead do, and finds her father. The scenes between them are lovely yet sad, as the

father teaches her to remember life in a room made of red string in a world of dead people where the Stones say even "rooms are not allowed."

Orpheus is the most dedicated of husbands, desperately writing letters to his dead wife in a series of vignettes, each more tragic than the next. Anderson is particularly striking in his retelling of a dream, where he woke to realize he had lost his wife, therefore his world, and therefore himself.

Determined to reach her, he rides a musical note into the raining elevator of the Underworld to bring her back. There is nothing he will not do, and Anderson's finest moment is when he fights the very earth itself, the Stones, to reach his beloved.

Eurydice, however, doesn't know if she wants to go back. Vershen said, "The hardest part, as an actor, was switching so quickly between different emotions, switching from blankness to utter fear, utter sadness... one minute being fine and one minute losing it." Well, she certainly overcame her difficulty.

Vershen captures Eurydice's various emotions throughout her journey

perfectly, from her lovesick youth to her confusion in death, to her revulsion and fear of the Lord of the Underworld, to her uncertainty at her future.

I won't spoil the ending for you, except to say that Pyke, who said that it "has to be right. It has to hit home," should feel immensely satisfied.

Eurydice, at its heart, is a play about the importance of living a life worth remembering and the value of love in the long term, not just the second you feel it, because someday, it will all be over.

In Vershen's words, "One of the huge themes of the show that everyone can relate to and should relate to is that memory and your experiences make you who you are, and you shouldn't forget them, because you will suffer a loss of self if you do."

So go see "Eurydice." I promise you it will absolutely be a memory worth making. The show will be at 8 pm in the COM Building's Recital Hall on Thursday, Friday, and Saturday. Talented local band "Camp Wisdom" will play before the show at 7:30. Admission is free to all. An in-depth interview with Pyke and Vershen is available online at cooperpointjournal.com.

Thursday

5

Riot to Follow Productions: Eurydice Recital Hall 7:30pm

Divestment Meet-up SEM II B1107 3pm

Ancestral Wisdom	Sem II C2105, 3:30 - 5:30 pm
Common Bread	Longhouse, Cedar Room, 5:30-7:30 pm
Dance Matrix Coll.	Sem II B1107, 6-9 pm
Evr. Stu. 4 Sus. Animal Ag	Lab 13033, 7-8 am
FreeWave Dance Coll.	C1107 & C1105, 7:30-9:30 pm
Law Society	Sem II D2109, 4-6:30 pm
MidEast Solidarity Project	Sem II B2105, 5 - 8 pm
Sabot Infoshoppe	Sem II A2107, 5-6 pm

Friday

6

Political Mashup Videos SEM II D1105 12pm

Ecology of Leadership workshop Organic Farm 4pm

15th Anniversary Coastal Jam Longhouse 5pm

Capoeira Angola	CRC 177 2:30-4:20 pm
Circus Resurgence	LIB 3000, 5-9 pm
FreeWave Dance Coll.	CRC 116, 6-9 pm
Knitting and Crocheting Club	CAB 313, 1-3 pm
SCNM	(New Music) The Flaming Eggplant Cafe, 12-1 pm
Anti-Racism Discussion Group	LIB 2207 3-4 pm

Saturday

7

NW Latin America Solidarity SEM II D1105 10:30am

Pow Wow CRC Gym 1pm

Sci-fi Collective	LH 2, 5:30-9 pm
SVGA	(Video Games) CAB 301, 3-6 pm

Sunday

8

Demeter's Garden Work Party and Potluck Organic Farm 10am

DEAP Organic Farm 11-3 pm

Monday

9

Film Screening: Gasland LH 1 11am

Evergreen Woods Clean-up F-Lot 3pm

Environmental Citizenship lecture LH 1 3pmw

Clean Energy Fair Red Square 6:30pm

Asian Pacific Islander Coalition	CAB 313, 1-2 pm
Capoeira Angola	CRC 117, 2:30-4:30 pm
Cooper Point Journal	CAB 332, 4-5 pm
Evr. Stu. 4 Sus. Animal Ag	Lab 13033, 12:30-1:30 pm
Funny Bones Organization	Sem II C3109, 3:30-5 pm
FreeWave Dance Coll.	CRC 116, 3-5 pm
Health Society	Lab 13033, 11:30-12:30 pm
TREX	(Transgender Resources) Sem II D2107, 4:30-6 pm
WashPIRG	(Ban the Bottle) Sem II C2107 5-6pm

Tuesday

10

Designing Built Environments LH 3 3pm

Dance Matrix Coll.	Sem II B1107, 6-9 pm
GRAS	(Anime Club) Sem II E1107, 6-9:30 pm
The Great Fires	Organic Farm, 6 - 8 pm
Greens for Christ	Sem II C1107, 7-8 pm
First Potluck Kick-Off	CAB 3rd floor conference room

Wednesday

11

Board of Trustees Divestment Meeting Library Boardroom 1pm

Creative Writing Workshop: Language of Gesture LIB 2310 1 pm

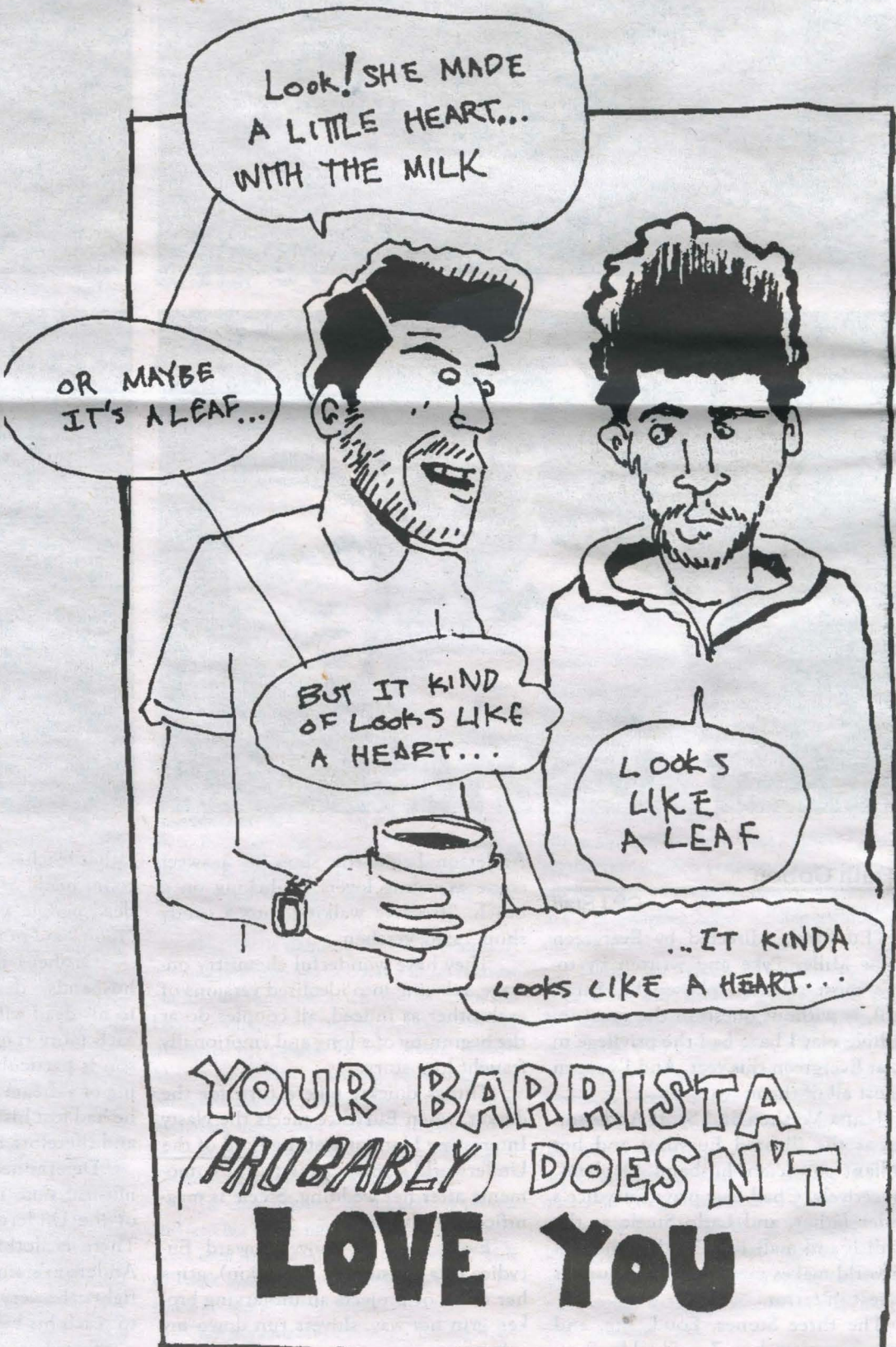
Grammar Garden Workshop: Pronunciation LIB 2310 3:30pm

Reproductive Justice Workshop LH 2 7pm

Bedfellows	Cedar Room, Longhouse, 7-10 pm
Coalition Against Sexual Violence	Lib 2207, 1-2 pm
Conscious Cooks	Organic Farmhouse, 3-5 pm
Chemistry Club	Lab 13033, 2-3 pm
Dance Matrix Coll.	CRC 116, 3-5:30 pm
Ever. Gaming Guild	CAB 2nd floor, Quiet Lounge, 6 - 9 pm
Evergreen Queer Alliance	Sem II C1107, 3-5 pm
Funny Bones	Sem II C3109, 2-5 pm
Geoduck Student Union	Sem II D1105, 2-4 pm
Geoduck Campus Games	CAB 301, 6-7:30 pm
Geology Club	Lab II 2211, 3-4 pm
Greens for Choice	Sem II A2109, 3:30-4:30 pm
Icarus Project	Sem II A3105, 3-5 pm
Latin Am. Solidarity Org.	CAB 313, 3-4 pm
MidEast Solidarity Project	LIB 1005, 5-6:30 pm
Native Student Alliance	Longhouse Lounge, 4-5 pm
Photo Club	LIB 1412, 1:30-3:30 pm
Slightly West	Sem II E3107, 1:30-3:30 pm
Socialist Alternative	Sem II E 2107, 4-5:30 pm
Student Vet Org	CAB 313, 1-2 pm
WashPIRG	Longhouse 1002, 5-6 pm
Women's Resource Center	WRC, CAB 321, 1:30-2:30 pm
YaYa	CAB 313, 4-5 pm



Comic: Ali Rohrbacher



Comic: Jason Trent



Comic: Galen Radtke

submit your comics to
cooperpointjournal.com