

Vox Populi
The Voice of the People

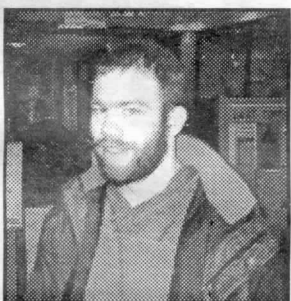
What are your comments on the food services situation?



"I'm not that informed about the different options ... it would be nice if we could get some more variety and more attention to quality."
— Andy Loviska



"I think there is a lack of food service that represents what Greeners want. I think that we could change that with a solid student government in office."
— Jenne Leise



"Quality is way low. The prices are outlandish, a lot of times I actually drive into town to eat. They kind of have a monopoly... I'm not very satisfied with it... It's an anti-Evergreen thing."
— Owen O'Keefe



"I think that Fine Host needs to burn."
— Corey Lund

For more information on food services, please see page 3

Class proposes "living laboratory"

Sustainable forestry students present campus with survey in hopes to protect and maintain environment

by the students of the Sustainable Forestry program

An interesting piece of experiential learning is happening once again on the campus of The Evergreen State College. Sustainable Forestry is an upper division science program that combines conservation biology and silviculture in an interdisciplinary coordinated studies program. The perspective taken by the program is that sustainable forestry is a land management system, which puts the enhancement and maintenance of a fully functioning forest ecosystem in a position of overriding importance.

Taught by forest ecologist Gabriel Tucker and wildlife ecologist Nobuya Suzuki, the program offers insight into managing forests for multiple values. Class members represent diverse interests, from science students to forestry professionals. All of us are interested in becoming part of a movement to change the way people value forests and use wood resources.

Subjects of study include forest ecology, silviculture, environmental policy, wildlife population analysis and management, wildlife response to various silviculture techniques, landscape level ecosystem management, land management economics and sustainable forestry certification. Three weeks of field trips, which started off the year, offered students a visual representation of how land managers are using these concepts.

To look at different ways of practicing sustainable forestry, the class has formed several Campus Stewardship Option (CSO) groups. The CSO's are part of constructing a land management plan in accordance with guidelines set forth by the Forest Stewardship Council, which certifies forests as being sustainably managed. Each CSO is being developed with a Habitat Conservation Plan, each of which is modeled after those submitted in compliance with the

Endangered Species Act.

Our goals as a program are to protect, maintain, and increase wildlife habitat, species diversity, and overall forest health by creating a model for sustainable forestry that promotes ethical use of forest products. This work should be science based and aims to create an educational opportunity for all students and community members. Also, we will encourage the ongoing use of campus lands for educational purposes so that these lands are not allocated for other purposes by the State. Through modeling and education, we wish to encourage a marketplace that rewards sustainable forestry while moving the campus towards self-sustainability.

One aspect of the program includes the potential creation of a living laboratory on the Evergreen campus. With this project we look forward to starting an ongoing legacy of research involving many students and faculty to continue into the future, incorporating academic studies with hands-on practical application. The Evergreen State College is joining the leaders of forestry science in the research and demonstration of new forestry models. This program is one of the first of its kind in the United States and offers students and community alike the opportunity to be an integral part of a new era in forestry.

All activities on The Evergreen State College Campus are governed by the Campus Master Plan, which was recently revised in 1998, the Campus Land-Use Committee, which is made up of college administration, faculty and students, and then ultimately the Board of Trustees. The following are brief descriptions of the Campus Stewardship Options that the students are proposing as part of the program. Those that directly concern campus land will be considered by the Campus Land-Use Committee this winter, while those proposed for off campus will be overseen by other responsible groups.

please see Survey on page 13

Does administration support sweatshops?

by Neal Ahern

Administrative Support for Sweatshops!

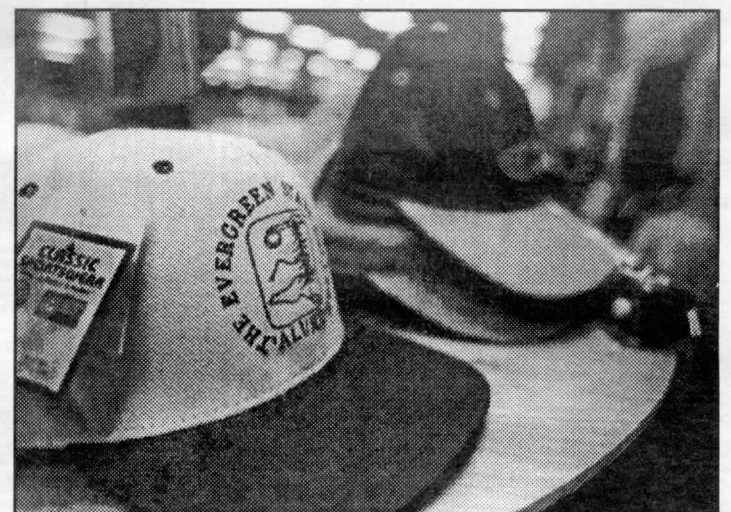
Greetings from the Evergreen Autonomous Students Against Sweatshops (ESAS). Have you ever purchased apparel in our bookstore? Does it upset you to know the product you purchased was most likely produced in a sweatshop? We are a group of students concerned about the use of sweatshop labor to produce clothing for our bookstore. We are outraged that as a public institution, we are financially supporting an industry that thrives on the exploitation of workers throughout the world.

Over the course of a seven-month dialogue with the administration about Evergreen's support for sweatshop industry, it has become clear that critically responding to withdraw that support is certainly not an administrative priority. Below lies our story **Our Proposal**

Our proposal calls for Evergreen to withdraw from the corporate-dominated Fair Labor Association (FLA) and to become a member in the Worker's Rights Consortium (WRC) and develop a garment-purchasing code of conduct. Both the WRC and the FLA are sweatshop monitoring organizations; however, any similarities between the two organizations end there.

The WRC is a coalition of labor unions, students, faith-based organizations, and human rights activists that have created policies and standards (independent of the garment industry) to promote workers' rights throughout the world. Although Evergreen's membership in the WRC will not immediately improve the conditions for oppressed workers of the world, it is certainly a step in the right direction. By joining the WRC, we are saying no to the FLA's system of corporate-managed sweatshop monitoring. We are taking an active stance to fight sweatshop labor by dictating what labor standards and working conditions are to be enforced by companies attempting to sell their apparel in our bookstore.

Membership in the WRC requires colleges to develop a code of conduct to dictate purchasing policy for the bookstore. The code outlines workers' rights provisions such as



Are these hats made in a sweatshop? photo by Brandon Beck

maternity leave and other women's rights, a living wage, public disclosure of all factories producing a company's products, the right to form a union and bargain collectively, and other workers' rights issues that are suppressed in the sweatshop industry. Once developed, this code of conduct is handed to every company that wants to sell their clothing in the bookstore; in turn, the companies are expected to enforce within their factories the standards

please see Sweatshops page 13

Faculty Discusses General Education

By Erica Nelson

Faculty met on Wednesday to discuss the proposals for curriculum changes posed by the General Education DTF. They will meet to approve these proposals on Feb. 14.

The two proposals, "Spring Festival" and "Cross Divisional," require a certain percentage of faculty to devise and teach more interdisciplinary courses and give students more access to arts, sciences, and quantitative reasoning (math). They also both propose a new kind of advising that would require faculty to advise students and help them develop an "academic plan" for their time at Evergreen. More attention would also be paid to meeting the "Expectations of an Evergreen Graduate," which were approved by the faculty earlier this year.

About 40 faculty and Gen. Ed. DTF members gathered on Wednesday to discuss the variety of issues brought forth by the proposals. Some were concerned about increased bureaucracy and workload from the new advising plan. Many faculty members felt that an increase in hiring is necessary for these proposals to work. As Mark Levinsky put it, "If you want broader access ... hire more artists, scientists and mathematicians."

Still other faculty were concerned with the way these programs would be taught, and that teachers would not work together, but trade off in a kind of "tag teaching." Prerequisites also became an issue, and much of the faculty was divided on the importance of their presence and what they would entail.

There was also some discussion of more repetition of programs, so students could take one-time programs that they were interested in, knowing that other programs

they wanted would be available the next year.

An issue that troubled some faculty was surrounding the "Expectations" and that they might turn into a sort of checklist on the transcripts.

"The student has to be the voice for how well they've addressed the expectations," said Sarah Penderson.

Another change in curriculum that was discussed would involve a "summative self-evaluation" that students would write when they get ready to graduate.

Reproductive Health and Government

Here's a chance to get involved in county government and reproductive health! Thurston County is looking for citizens to join the Family Advisory Committee. Duties would include advising the Board of Health on matters relating to reproductive health, including family planning and sexually transmitted diseases in the community; assuring community and consumer support of Title X funded family planning activities; and reviewing and approving educational materials used by the Family Planning Program. The several vacant positions would entail a two-year term and quarterly meetings. If you're interested, contact Laura Pennington at 786-5581, ext. 7236 to obtain an application and extra info. Have fun!

Dean Removed From Position

By Greg Skinner

In a campus wide e-mail sent out Jan. 25, Art Costantino, vice president for student affairs, said that as of Jan. 29, Jessie Welch, Dean of Enrollment Services, is on his way out of Evergreen's administration.

Welch, who has been employed in his current position for 30 months, will be replaced interim by Steve Hunter who, until last Monday, was Director of Institutional Research for Evergreen.

Costantino refused to comment on any situation that would cause Welch to be removed from his position as Dean one-third of the way through the academic year.

Hunter has come into enrollment services because of his close ties with Recruitment and Admissions for the last eight years. Costantino feels that Hunter can fill the post in an area that is having considerable trouble "Steve has been a partner with admissions doing assessment work for us and doing research into how this institution is perceived by prospective students," said Costantino.

Evergreen has had to keep the admissions deadline open later and later during the last two years to fill the number required by the state. This enrollment decline coincides

with Welch's tenure. This academic year, the enrollment application deadline was extended from March first to the end of August. Costantino said that in the recent past, Evergreen enrollment has been full by the standard deadline. When asked if the slow enrollment numbers and Welch's leaving are connected, Costantino again refused to comment.

A national search will be conducted for Welch's replacement. Mike Segawa, Director of Housing, will chair the committee, which hopes to conclude the interview process by mid-May, then make an offer to someone in early June. Costantino said the goal is to get the new Dean on board by mid-July.

Welch, who could not be reached for comment, has only been relieved of some of his duties. Until the end of the year Costantino has assigned Welch to a "series of administrative duties including the planning of graduation, portions of the Banner implementation work, and duties associated with communication and marketing for the college."

An Interview With Michael Franti

By Kevin Burge

Michael Franti is at least two heads taller than me, which at my towering height of five-six, isn't exactly uncommon. Still, I've never felt smaller. The show is over and a small crowd has gathered around Michael for a hug or a handshake, to say thank you or just smile in goofy admiration. I feel like a new breed of asshole when I interrupt the flow of the mob to ask if he would mind answering a few questions for my "school newspaper."

I want to know what he would pick as his top five albums to help us survive the Bush administration.

"Kaya by Bob Marley. Marvin Gaye's *I Want You*. We got to bring back the Public Enemy spirit. And

then, you know, whatever two love albums you got. We got to keep love and sensuality a part of our consciousness."

Love and sensuality have been increasingly potent themes in Franti's music since the advent of Spearhead's debut release, *Home*. It's fitting. I'm lost in fanboy thoughts, like damn, this man is sexy, and tall, and when he gives me a hug I feel his dreads rub against my neck and now his sweat is co-mingling with mine, making God knows what kind of glorious chemical reactions on my body.

In the chest puffing, male dominated, macho world of hip-hop, self-examination and honesty are rare enough to make one stop and

continued on page 14



CAB 316
cpj@evergreen.edu

Business News

867-6054 867-6213

Business Manager Editor-in-chief

Jen Blackford Whitney Kvasager

Asst. Business Manager Letters & Opinions editor

Could be you... Corey Pein

News editor

Erica Nelson

Representative Photo editor

Ian Paden Brandon Beck

Circulation and Archivist Assistant to Photo editor

Michaela Monahan Adam Louie

Sports Editor

Shasta Smith

Designers

Paul Hawxhurst, Kevan

Nicholas Stanislawski Moore, Michael Selby

Copy Editors

Lauren Storm Jen Blackford, Gwen Gray,

Mosang Miles, Megan

Adviser

Dianne Conrad Watson

The Cooper Point Journal is published 29 Thursdays each academic year, when class is in session: the 1st through the 10th Thursday of Fall Quarter and the 2nd through the 10th Thursday of Winter and Spring Quarters.

The CPJ is distributed free on campus and at various sites in Olympia, Lacey, and Tumwater. Free distribution is limited to one copy per edition per person. Persons in need of more than one copy should contact the CPJ business manager in CAB 316 or at 360-867-6054 to arrange for multiple copies. The business manager may charge 75 cents for each copy after the first.

The CPJ is written, edited, and distributed by students enrolled at The Evergreen State College, who are solely responsible for its production and content.

Contributions from any TESC student are welcome. Copies of submission and publication criteria for non-advertising content are available in CAB 316, or by request at 360-867-6213. The CPJ's editor-in-chief has the final say on the acceptance or rejection of all non-advertising content.

The CPJ sells display and classified advertising space. Information about advertising rates, terms, and conditions are available in CAB 316, or by request at 360-867-6054. The CPJ's business manager has the final say on the acceptance or rejection of all advertising. A year's worth of CPJs is mailed First Class to subscribers for \$35, or Third Class for \$23. For information on how to subscribe, call 360-867-6054.

Corrections:

➤➤ MEChA & LASO's meeting time is 2:00 P.M. on Wednesday.

➤➤ Last week's Page 4 article on the JCC was replete with typographical errors. Also, the headline should have read "Jews, Can we talk?" instead of "Can we talk?"

Fine Host makes it easy to hate them

commentary by David Smith

A couple of weeks ago, I started writing about my frustrations over the state of food service on campus. Because of the article, I found myself having the same conversation as much as three or four times a day. Almost every person I talked with wanted to know what was going on and why, and everyone from the faculty to the staff to the students is aggravated over the recent price increases. A few months ago I was like everybody else. My biggest problem with the food service was the quality and quantity of food I got for the money I paid. But I'd have grumbled a little and rolled over like everyone else, because by itself the corporate menu just is not that important.

And believe it or not, there is an up side. I'll now share with you my semi-famous "Steam-Tray Diet." It's very simple and very effective. You can eat all you can stand from the deli's steam tray. That's it. After a week or so of that all you have to do is lift the lid on the ooze de'jour, and your appetite isn't just suppressed; it vanishes altogether as your stomach contracts to the size of a raisin out of self-preservation. You'll be rejecting such favorites as Cream of Potato Soup (believed to be just

slightly thinned down insta-spuds the consistency of oatmeal). Or how about last week's "Shepherd's Pie," without the potatoes (musta used 'em all in the soup); imagine carrots, peas and corn suspended in a granular meat/gravy emulsion. Then there's "Taco Casserole" (that one speaks for itself...)

What set me off on this quixotic crusade wasn't the food. It was the attitude on the part of management. They've got a virtual monopoly on campus, but they seem to have no sense of obligation to the community. In just the past few weeks we've had the prices shoot up, paying by check went away overnight, tip jars that aren't tip jars, a rent-a-rookie lurking over our shoulders; and have you noticed all the new employees who aren't students? It may well be that no student is desperate enough to volunteer for combat, but it may also be that non-students are less of a headache. I don't like either of those possibilities.

Every one of the current or former employees I've talked to tell me about the stresses of working for Fine Host. It comes from being put in between the customers constantly grumbling about the food and the prices, and the company, run by sporadic micro-managing and a lot of yelling. Working on campus

shouldn't be that stressful a situation for a student. Part of the job of a college is to give people a safe place to learn about life. Well, these folks are learning all right.

On the one hand we have a food-service manager who is unwilling or unable to communicate with the people he "serves," and who seems determined to alienate himself and his company from both his customers and his employees. But he's tasked with cleaning up an operation that was hemorrhaging money by the bucketload. The food service brings in a lot of revenue for the college, mostly during conferences, but also from day to day sales. Right now, theft in the Deli is said to be unreasonable by those who know. Every business has to contend with a certain amount of "shrinkage," and every business does its best to minimize it. I honestly don't think prosecuting a student for stealing a 99-cent cookie is going to have the desired effect. What it suggests to me is that Fine Host is even more petty and punitive than I thought.

Most people don't steal from someone they like, and Fine Host is making it easy to hate them, simply because they don't see the community they serve as anything more than a link in their revenue stream. They don't treat us like

human beings, so we don't treat them like human beings. They seem to forget that that's *OUR* space in *OUR* college.

Maybe if they would try looking at things from our point of view or included opinions from the community, they'd come up with more effective answers. At least the answers they choose might be presented in a more palatable way. But 'they' don't seem interested in real solutions. Fine Host, at least as it exists now, won't be back next spring. They are on a one-year extension of their contract while the college tries to find a more permanent solution. The food service up until recently was "mishandled"; that's the current euphemism for it. This management team was brought in to clean things up. So for the next few months, we expect more arbitrary get-tough belt-tightening, foot-stomping, yelling and other ineffective displays of power as we are treated to a front row seat of everyone's favorite corporate game show, Cover Yer Ass. Real communications would go a long way to making things better, but as far as any real change, I just don't see what is going to jar Fine Host's manager out of his current point of view. Until that happens, I don't think anything is going to improve in our food service.

HEY!!! The CPJ is hiring...

- Layout/Graphics Editors
- a Photo Editor
- Copy Editors
- an Arts & Entertainment Editor

Applications are due Feb. 5 @ 3:00 P.M.

Pick up an app. at the CPJ office, CAB 316

Contact: Whitney Kvasager x6213

Student Trustee Corner

By Vagmayi

We are now firmly planted in the Year of the Snake, and the year 2001. As I begin to settle in with my new class syllabus, books still naked of colored highlighters, and re-energized from Winter break, I bring you greetings from the Board of Trustees of the Evergreen State College.

Since my last article - which hasn't been recent, so don't think you've missed anything - the Board of Trustees has been kept busy with a flurry of activities.

Various meetings have required the presence of the Board over the last three months. A board retreat was held during the fall, and two full days were spent in intense conversation with Les and the senior staff to evaluate where Evergreen is today in the big picture of higher education, and to create future goals that expand our capacity to embrace future challenges. To insure that The Evergreen State College produces graduates whose diplomas are representative of the best liberal arts education in the nation is the umbrella under which we work. And that, my fellow students, requires sweat and equity on the part of us all.

The Evergreen State College Foundation and funds from Washington state programs make scholarships possible for Evergreen students. In my capacity as student Trustee I attended a luncheon for those who were honored recipients. The room was filled to capacity with students, their families, college staff and dedicated volunteers who read and rated the applicants. Great food, too... I love those lemon bars. Plus I picked up a catalogue as soon as possible for the 2001-2002 academic year.

I was filled with pride to sit on the platform at the Inauguration of our President, Les Purce, and to share with our community this formal yet sensitive event. I was reminded by

one of my colleagues on the board, David Lamb, that I was the first student Trustee to attend a Presidential Inauguration at Evergreen, and just as my chest began to expand, he added, because there has never been one before ... He also reminded me that our football team is undefeated. It is these kinds of momentous occasions that make me truly proud to serve as student Trustee. Thank you, David, for reminding me.

I met with students who attend one of our Tribal-based programs at Fort Gamble. The stories they shared about the path that brought them to Evergreen and the sacrifices they make to get to class and to Olympia each month to be in a community with the other tribal programs are inspiring. The CPJ could provide a blessing to us all by interviewing and telling a story about any one of these dedicated students. On Feb. 3 and 4, I plan to be present at the Longhouse and meet new friends and learn more about the unique features of this great program. At our January Board of Trustees meeting, an informative presentation by Tina Kuckkahan, Longhouse Director, and Laura Grabhorn, Assistant Director, provided the board a closer look into the Tribal-based program which is such a vital part of our Evergreen community.

As a board we lunched with the CPJ staff (before the current changes), and have invited program faculty and students from the Greys Harbor campus and program faculty Jan Ott from Whole and Holy (who happens



photo by Paul Hawxhurst

Our Student Trustee is available to answer all students' questions. Her e-mail address is mother-of-words@home.com

to be my faculty, and one of the best) to attend board meetings in the effort to meet the goal as a visible part of the Evergreen community. Providing a place on the agenda during board meetings for brief presentations of programs with faculty and students satisfies me as student Trustee that, indeed, what and how we are learning is important.

A new home for our fellow students in Tacoma is a major source of pride for me. As my first official act as student Trustee, I attended the graduation celebration in Tacoma with our past President Jane Jervis. What a party! I met many students and was asked to speak a few words by Dr. Joye Hardiman. The room was electric with pride, and now to have this beautiful new home ... Wow! I can't even imagine what this year's celebration will be like. The grand opening is scheduled for May. I hope many of you can attend or at least pay a visit to this "Miracle on the Hill" in Tacoma. I know I plan to be there with my Trustee hat on.

February 15 is Higher Education day at the State Capitol Building, and all of the members of the Board of

Trustees will be in attendance. I don't have all the final details yet, but it's no secret that the Governor's budget is a big concern for all of us in Higher Education throughout the state. I have a new song for the day entitled, "A Whole Lotta Lobbyin' Goin' On."

While the food service issue[s] still lingers, I have spoken with Piper Kapin and Steve Trotter. I know the tremendous amount of work that both of these people have put into this issue. It's important to them, and they are well aware of its importance to us students. Stay tuned.

Finally, I would like to mention, as much as I'd rather not, that it will soon be time for a new student Trustee to be selected. You can check with Tom Mercado in CAB 318 for the exact time, but it will be around spring break. I invite any interested students to contact me.

As student Trustee, I serve with a caliber of people who are dedicated to supporting our education by rigorous examination of policy and procedures, and do not hesitate to question and hold accountable ALL who serve us, the students of The Evergreen State College.

FREE PREGNANCY TESTS



Now at all
Planned Parenthood
health centers

If you've missed a period or think you're pregnant, don't wait. Find out. Our medical staff can help.

- Totally confidential
- Just walk in
- Have your results in minutes

Look in white pages or check out our website for center near you.

 Planned Parenthood®
1-800-230-PLAN
www.ppww.org

Attention Lovers of Hispanic Culture *Presentation and Poetry Reading*

February 16th 2-3pm

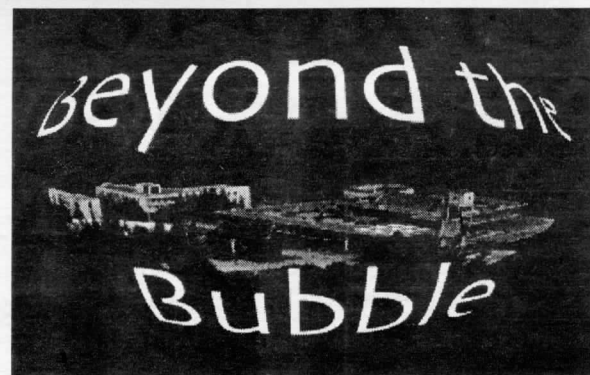
Presentation by Alurista to students
of the following programs:

Hispanic Forms and Life, Reading South and North,
Reading and Writing, Contemporary Prose,

**Other members of the community
are invited to attend.**

7:30 - 8:30pm Poetry Recital Location: Lecture Hall 1

*Books by Alurista are available in the
Evergreen Bookstore during the week of Feb. 11th.*



By Brian Frank and Vanessa Lemire

This week's top stories

- World Economic Forum and World Social Forum meet
- Surveys show Gore should have won the election
- Catastrophic earthquake in India leaves countless dead

Domestic

• The Washington Post and the Palm Beach Post conducted independent surveys among Florida's uncouned ballots showing that Al Gore should be the president of the United States. The first survey showed that Gore had a 3-1 majority among 56,000 Florida voters whose ballots were discounted. The second survey showed that Gore had a majority of 682 among the "dimpled" ballots in Palm Beach County. However, no legal challenge is possible due to the U.S. Supreme Court's ruling to hand the state to Bush.

• The Bush administration has authorized the EPA to temporarily relax its federal clean air regulations to rectify the electricity shortage in California. Citing the energy crunch in California, Bush announced last week that he will ask Congress to approve a scheme giving oil companies access to the Arctic National Wildlife Refuge in Alaska. (more at /ens.lycos.com/)

• Bush said last week that he intends to go ahead with plans for building a nationwide missile defense, despite Russian, EU, and Chinese objections. Besides blowing billions of dollars, the building of this defense system violates the Anti-Ballistic Missile treaty, and Russia warns that it will be prompted to neglect all existing arms agreements if the ABM treaty is breached. (more at /www.washingtonpost.com/)

Environmental

• The top European Union (EU) environment official expressed on

Wednesday concern that the U.S. president George W. Bush would undermine international efforts to cut down on the greenhouse gas emissions which cause global warming. Climate talks on implementing the

United Nations Kyoto Protocol governing greenhouse gas emissions collapsed last year when the U.S. refused to agree to reduction protocols. The U.S. is responsible for 25% of all greenhouse gases emitted in the world. (more at /www.ips.org/ and /ens.lycos.com)

• Aventis Crop Science, the maker of Starlink genetically modified corn, an illegal strain that infected the food system last year, has agreed to compensate growers and grain processors for corn they can't sell. The compensation is also offered to those whose crops became contaminated by Starlink pollen drifts.

• Last week in Denmark, 29 Greenpeace protesters were arrested for locking down to a carrier containing 20,000 tons of GE animal feed, and managed to prevent the Italian ship from unloading. Greenpeace is demanding that the EU to label animal products fed with GE feed. (more at /ens.lycos.com/)

• Dioxin, already accountable for health problems including infertility, immune system suppression, and learning disabilities, has now been officially linked to cancer. Dioxin is no longer produced commercially, but is widespread around the Earth as a byproduct of many industrial processes, including the incineration of waste. (more at /ens.lycos.com)

Foreign

• Insurgent protests and barricading of trade roads are spreading around Ecuador, following a military attack on a march commemorating the one-year anniversary of the indigenous people's uprising that ousted Ecuador's president and nearly overthrew the rest of Ecuador's government. A group of protesters temporarily occupied Ecuador's CNN news station, broadcasting attacks on the current president, the International Monetary Fund, and the U.S.'s "Plan Colombia," the billion dollar military aid package to Ecuador's southern neighbor.

• Uganda's government is again being accused of fanning the flames of ethnic strife and civil war in the Democratic Republic of Congo (DRC), this time by selling weapons to the Hema, an ethnic group that recently slaughtered hundreds of unarmed Lendu, another ethnic group living nearby in northeastern DRC. Uganda's government had formerly been training both the Lendu and the Hema for guerrilla warfare against Congo's government. It was also revealed last week that the DRC's former president, Laurent Desire Kabila, who was assassinated earlier this month, was preparing to dismiss

several prominent members of the military, leading to the suspicion that the military may have planned the assassination. More than 1.7 million people have died from direct or indirect effects of war in the DRC. (more at /www.ips.org/ and /www.allafrica.com/)

• A new immigration law took effect last week in Spain sparking massive protests, and setting up 27,000 foreigners for imminent expulsion. The law, passed a year ago despite strong opposition from leftist parties, deprives undocumented immigrants of their basic social rights, such as the freedom to gather, protest, join a union or engage in a strike. (more at /www.ips.org/)

• The World Economic Forum, a meeting of economists, politicians and business CEOs, met in Davos, Switzerland last week, amidst large protests, a huge police presence, and a snow storm. Police attempts to disperse protesters with water cannons, tear gas, and finally a no-protest zone, drew substantial criticism, even in the mainstream media. Angered protesters clashed with police, smashed store windows, burned several cars, and set up barricades. (more at /dailynews.yahoo.com/)

• Last week in Porto Alegre, Brazil, the World Social Forum was hosted by Governor Olivio Dutra to counterbalance the World Economic Forum. Thousands of people filled the streets and attended workshops and panels in the hope of raising awareness of social, economic, and cultural rights of the "possible world." One of the star speakers, Jose Bove, a sheep farmer famous for leading demonstrations against McDonald's in France, was given 24 hours to leave Brazil after he led 1,300 Brazilian farmers in a ravage of local Monsanto fields and company documents. (more at /www.ips.org/ and /asia.dailynews.yahoo.com/)

• Israeli elections will be held this week, with right-wing hawkish leader Ariel Sharon the likely victor. Sharon's visit to an Islamic holy site last year, with an entourage of hundreds of military personnel, sparked the Palestinian revolt which has led to more than 350 deaths, the vast majority Palestinian, in the past few months. (more at /dailynews.yahoo.com/)

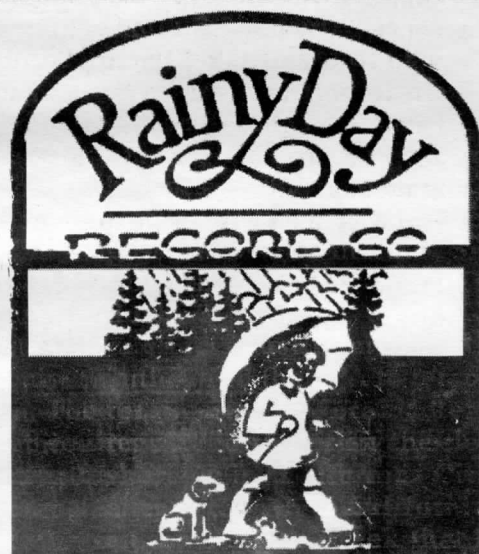
• Widespread drought has left ten million people in need of emergency food aid in Ethiopia and neighboring Sudan, according to aid agencies operating in the region. Ethiopia and Eritrea are still in the midst of a border war, resulting in the death of thousands of people and the displacement of thousands of others on both sides. Sudan has been in a brutal civil war for more than 17 years. The

U.N. estimates that more than 152 civilian sites were bombed by Sudan's air force last year alone, and an estimated 2 million people have died of causes linked to Sudan's civil war during the past 17 years. Some 4.4 million Sudanese have been forced from their homes—the largest uprooted population in the world. The Sudan People's Liberation Army (SPLA), the main rebel group, has been fighting for self-determination for the Christian and traditional African religion followers from the predominantly Muslim north. (more at /www.refugees.org/ and /www.ips.org/)

• Southern Guinea is slipping into a state of war. A quarter of a million refugees, who had fled into Guinea to avoid other regional conflicts in Liberia and Sierra Leone, are now in the crossfire of a government attack on rebels in the region. (more at /www.allafrica.com/)

• The worst earthquake in half a century rocked India last week, killing more than 2,000 people, injuring 3,000, and leaving countless others trapped in rubble. The quake reached 7.9 on the Richter scale and could be felt 1,200 miles away. Britain, The World Bank, and even Pakistan have sent millions in aid. (more at /dailynews.yahoo.com/)

Beyond the Bubble is published each week as a service from EPIC (The Evergreen Political Information Center). EPIC also publishes a weekly email update of politically related events occurring around campus, Olympia, and the region. To receive the update, to make suggestions for this column, or for more information about EPIC, please contact epicupdate@hotmail.com or 867-6144. EPIC meets at 2p.m. Wednesdays in Library Room 3500.



Since 1973
CDs, Cassettes, Lps
New & Used

Over 600 Hip-Hop titles
on CD & LP / 12"
Over 500 Techno Titles
New Stock in Every Thurs.

Skateboards, Clothing
Converse Shoes

Video Rentals
Specializing in Art
& Foreign Films
2 Day Rentals
\$1.95ea. for 2 or more
Mondays are half priced!!

Ph357-4755
M-Sat 10-8, Sun 12-5
intersect of Division & Harrison
@ Westside Shopping Center

Chrysalis

111 Legion Way
Downtown Olympia
(360) 753-5527

WE'VE MOVED TO A BIGGER & BETTER LOCATION WITH COOL STUFF.

TUES-THURS. 10 A.M.-8 P.M.
FRI. & SAT. 10 A.M. - 10 P.M. • SUN. NOON - 5 P.M.

* BEADS *

* INCENSE *

* CANDLES *

* STICKERS *

* BUTTONS *

* CARDS AND POSTCARDS *

* QUEER GEAR *

* GLASS ART *

* STERLING SILVER *

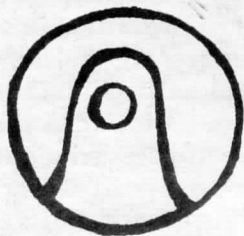
* AND A LOT MORE!!! *

MAYAN COSMOLOGY

By Courtney Haedt

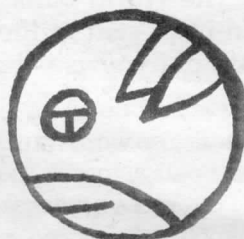
A Weekly Chart of Universal Energy

We are completing the 7th Moon of Attunement this week. Harness its energy and prepare for the Moon of Integrity! The Wavespell of the Blue Hand is ideal for accomplishing important tasks in your life and work. The time is now!



Thursday, Feb. 1 - RED ELECTRIC MOON - Day 23, Moon 7
Kin 29 - Tone 3 - Creative energy begins to move, fuel it!

*I activate in order to purify
Bonding flow
I seal the process of Universal Water
With the electric tone of service
I am guided by the power of space*



Friday, Feb. 2 - WHITE SELF-EXISTING DOG - Day 24, Moon 7
Kin 30 - Tone 4 - Integrate your higher purpose into body function.

*I define in order to love
Measuring loyalty
I seal the process of heart
With the self-existing tone of form
I am guided by the power of death*



Saturday, Feb. 3 - BLUE OVERTONE MONKEY - Day 25, Moon 7
Kin 31 - Tone 5 - Intensify your focus and facilitate action.

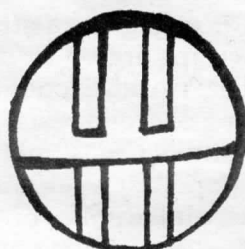
*I empower in order to play
Commanding illusion
I seal the process of magic
With the overtone tone of radiance
I am guided by the power of self-generation*



Sunday, Feb. 4 - YELLOW RHYTHMIC HUMAN - Day 26, Moon 7

Kin 32 - Tone 6 - Your personal intentions align with universal cycles.

*I organize in order to influence
Balancing wisdom
I seal the process of free-will
With the rhythmic tone of equality
I am guided by my own power doubled*



Monday, Feb. 5 - RED RESONANT SKYWALKER - Day 27, Moon 7

Kin 33 - Tone 7 - Exist as the complete circle of your past and future in the now.

*I channel in order to explore
Inspiring wakefulness
I seal the output of space
With the resonant tone of attunement
I am guided by the power of life force*



Tuesday, Feb. 6 - WHITE GALACTIC WIZARD - Day 28, Moon 7

Kin 34 - Tone 8 - Creative energy begins to manifest as tangible product.

*I harmonize in order to enchant
Modeling receptivity
I seal the output of timelessness
With the galactic tone of integrity
I am guided by the power of endlessness*



Wednesday, Feb. 7 - BLUE SOLAR EAGLE - Day 1, Moon 8

Kin 35 - Tone 9 - Your purpose intensifies as it becomes reality.

*I pulse in order to create
Realizing mind
I seal the output of vision
With the electric tone of service
I am guided by the power of magic*

The Planetary Kin

As you may have noticed, I have added additional information to the weekly chart. The Kin numbers in bold print identify the present place in the cycle of 260 days. This 260-day cycle is represented in an ancient visual chart named the Tzolkin, as seen on this page. The Tzolkin graphs the 20 Solar Seals, the glyphs such as White Wizard and Blue Eagle, with the 13 Tones - from Magnetic to Cosmic. Essentially, each glyph manifests itself as a particular tone once in the cycle. The combination of Tone and Glyph permutations total 260, hence a 260-day cycle. This cycle takes place within the 364 day yearly cycle, amidst the 28-day lunar cycle and 13-day wavespell cycles. This spiraling cyclic energy is an important part of Mayan cosmology, illustrating an ancient awareness of rhythm beyond linear time. Each Kin number represents a particular frequency, combining the essence of both glyph and tone. The Kin number of the day which you were born becomes your personal Kin number. Each year, your Kin number comes up and it is your Galactic Birthday! For some this will happen twice per Gregorian year, as the 260-day cycle repeats itself. For example, Kin 99 - BLUE GALACTIC STORM - was the first day of this Mayan New Year, July 26, and it will also occur on April 12. Those who identify with their Mayan sign are deemed "Planetary Kin." (An ancient Mayan greeting says "I am another yourself.")

1	2	3	4	5	6	7	8	9	10	11	12	13	14	15	16	17	18	19	20
21	22	23	24	25	26	27	28	29	30	31	32	33	34	35	36	37	38	39	40
41	42	43	44	45	46	47	48	49	50	51	52	53	54	55	56	57	58	59	60
61	62	63	64	65	66	67	68	69	70	71	72	73	74	75	76	77	78	79	80
81	82	83	84	85	86	87	88	89	90	91	92	93	94	95	96	97	98	99	100
101	102	103	104	105	106	107	108	109	110	111	112	113	114	115	116	117	118	119	120
121	122	123	124	125	126	127	128	129	130	131	132	133	134	135	136	137	138	139	140
141	142	143	144	145	146	147	148	149	150	151	152	153	154	155	156	157	158	159	160
161	162	163	164	165	166	167	168	169	170	171	172	173	174	175	176	177	178	179	180
181	182	183	184	185	186	187	188	189	190	191	192	193	194	195	196	197	198	199	200
201	202	203	204	205	206	207	208	209	210	211	212	213	214	215	216	217	218	219	220
221	222	223	224	225	226	227	228	229	230	231	232	233	234	235	236	237	238	239	240
241	242	243	244	245	246	247	248	249	250	251	252	253	254	255	256	257	258	259	260

Mostly Orchids is bringing it's traveling Orchid Show to Evergreen for a special Valentines Day Orchid Sale. The performance will start at 10am, and end at 4pm, in the Lobby of the College Activities Building on Monday, February 12th.



All prices slashed 25%

Expect to see: Phalaenopsis - Dendrobium - Oncidium - Paphiopedilum - Masdevallia
Prices start as low as \$12.00

Care sheets will be provided with each plant sold.



Traditions Cafe & World Folk Art

"Care to know where
your money goes?"

Support fair trade with low-income artisans
and farmers.

We are:

- A center for fairly-traded products from around the world
- A cafe with good food
- A performance space for concerts, classes, forums, and more

Website: traditionsfairtrade.com

300 5th Ave SW, Olympia • 705-2819

"Just a splash from Heritage Fountain & Capitol Lake"



Blotteravaganza

All the news the police will give us

by Jen Blackford

As if to make up for the delightful and magnificent amounts of crime going on campus this past quarter, this week's blotter features no real masterminds. No devious plots. No cunning schemes. Not even a drunk student. Nope, apparently no one did anything evil.

And yet strangely enough, I don't believe it. For there seems to be a vast and complicated conspiracy going on underneath my nose that I know nothing about. Hints of it are at every corner and yet it remains out of my reach. With each open report, rumor on the bus, or shifty look, my curiosity and my paranoia towards connecting random events grows.

I think Douglas Adams, in his sublime *Hitchhiker's Guide to the Galaxy* series said it best. "Suddenly, he realized what the answer to the problem was, and it was this, that something very weird was happening; and if something very weird was happening, he thought, he wanted it to be happening to him."

But for now, I'll be content with fire alarms, stolen bikes, and purloined pastries.

On with the mayhem...

January 23

6:55 a.m. Well, it's a good thing no one tried to take anything the night before, because apparently the alarm wasn't activated. Of course, this information really doesn't help you aspiring criminals. For alas, I cannot serve everybody's interests. 12:25 p.m. 'Tis a bitter day when a dog runs loose in the lab annex. Both for the dog, since it's pretty damn cold, and for me, since this is actually one of the more interesting things happening this week.

3:38 p.m. A person becomes enraptured by one of the peanut butter cookies in the Deli, and consumes it entirely in a joyous fit of gluttony. However, this culinary madness does not go over well with the Deli, and the cookie lover is arrested.

3:50 p.m. Another theft, fairly serious, occurs when a person gets their bank card stolen from an ATM.

5:23 p.m. A bike is stolen. Is anyone surprised? Well, besides the person whose bike was stolen.

January 24

5 p.m. Oh look, another bike is stolen. Because God forbid, someone should get off their butt and actually walk to class.

7:25 p.m. A fire alarm in A-Dorm on the 6th floor (ah, ex-living quarters) is caused by burnt macaroni and cheese.

8:50 p.m. Another fire alarm, and this time it's on the first floor of C-Dorm. It's caused by more burnt food.

January 25

10:05 p.m. A third bike is stolen from a bike rack. You know, there's only so many things you can say about stolen bikes (brought to you by CPJ Pointless Fact of the Day).

January 26

2:36 p.m. Burnt bagels cause a fire alarm on the 1st floor of D-Dorm.

3:58 p.m. Just when you think your life will be nothing but fire alarms and stolen bikes, an incident like this comes up that shows you a glimpse of something greater. In a very special blotter, police investigate a non-functional elevator in C-Dorm. What was the cause of this malfunction? Nay, it was not a mere mechanical difficulty or a rusty part. Indeed, it was due to "unknown person(s) urinating and pouring beer on electrical components." Was there a greater plan at work? If so, it would seem to be a fairly stupid one.

January 27

People recover from the splendor that is Spearhead and thus do not commit acts of a grievous nature.

January 28

8:25 a.m. Police suspect that someone tried to break into the Greenery kitchen area by repeatedly body-slammng against a metal door. It could be attempted burglary, or it could have been caused by frustration over copious and unnecessary amounts of money being used to pay for the basic need of nutrition. But I digress.

11:13 p.m. It slips through, unnoticed, wafting its way through the halls. People begin to wrinkle their noses. It grows stronger, making its presence known. Then some gasp in horror. "Oh my God, what is that smell," a person shrieks. "Is it the burning stench of food, serving as a horrible omen of a future fire alarm?" Another shakes his head emphatically. "No, it must be the mold, finally enacting its revenge against all who try to live and breathe within Housing." But the wisest of all, clears her throat and speaks in a sagacious voice. "It's just guys lighting up." And all bow to her

Absence of respect

Commentary by Selby

This past Thursday, Jan. 25, was Evergreen's Day of Presence. Obvious enough I suppose, but unfortunately, I feel that not everyone knew about the Day of Absence/Day of Presence and the events and activities available for people to participate in. However, that is a discussion for another day. Today, I am an outraged theatre artist and perturbed community member.

At 7 p.m., Vasna Bilavarn took to the stage in the Library Lobby for her debut performance of "Faces in America," a play based on the real-life experiences of a multicultural slice of teens and twenty-somethings from Los Angeles. Her acting was nicely nuanced and performed very admirably considering the rather dismal acoustics in the lobby area. The play was written by Colin Cox and Fran de Leon (both members of the Los Angeles Theatre Center) in 1995 and the Evergreen performance was directed by Cox. In summation, the artists were fantastic - it's a Greener I'm mad at.

The show was progressing at a pleasant clip, but because the Library Lobby is a central location and a high foot-traffic area, there were also plenty of distractions. Most distractions were minor enough; people skirting the space while trying to get to the library or go up to the third floor. That all changed about halfway through the performance.

While Bilavarn was in the middle of one of her characters' monologues, some random faculty or staff member (I don't know who

she is) was trying to get into the classroom area outside of the Labor Center - more specifically - the double doors marked "L 2100-2130." Being that there was a performance in progress, the doors were locked. But instead of taking the extra thirty seconds to a minute it would take to walk around the back of the audience to the other side of the lobby, the unknown staffer crossed the middle of the stage! During the performance! I was appalled, and still get angry as I write this, days later.

As an artist who has been involved in the theatre for years, I was angry on behalf of Bilavarn and Cox. One of the first and cardinal rules I learned about theatre was "respect the stage." Fundamentally, this means a respect for the physical wood, platforms, or in this case, bricks that compose the stage. However, it also expands to include the seating area, the audience, the technicians, and most importantly and obviously - the performer herself. Our Greener disrespected all five.

As a student trying to get the most education and experience from Day of Absence/Presence activities, I was just angry, period. Angry that, on a day set aside for the express purpose of raising cultural awareness and celebrating diversity, an Evergreen staff member could be so insensitive. (A staff member who, for whatever it means, appeared to be of Caucasian descent.) As open, diverse, and culturally educated as the Evergreen community claims to be, this has made it abundantly clear to me how far we still have to go.

superior wisdom. Or at least that's how it could have happened.

January 29

3:32 a.m. A suspicious circumstance in F-Lot. But of course, it's an open report, since I shouldn't have access to anything that seems serious or substantial. No, I'm not a bitter person. Not at all.

10:26 a.m. Yet another theft from the Greenery. Boy, it sure is a coincidence that since prices got

raised, there's been a lot of people getting arrested for food thefts. And yet it seems all too familiar. Wait, I'm getting an image. Oh, sorry. I was once again reminded of the French Revolution. Boy, I've got to stop taking those history classes.

1:07 p.m. A fourth bike is stolen, this time from C-Dorm. See previous three bike blotter entries to be reminded of how much I enjoy writing about these thefts.

"The Most Fun Place to Shop in Olympia!"

FINDERS KEEPERS

ANTIQUE MALL

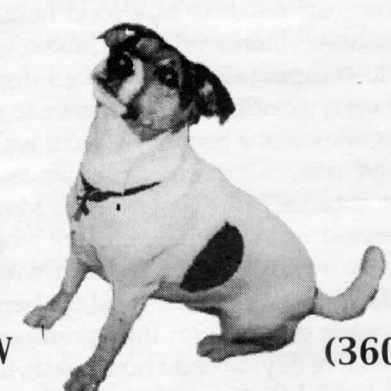
1728 State Avenue 943-6454
Mon-Sat 10-5 Sun 12-4

Orca Books
Olympia's Largest Independent Bookstore

Student Discount
10% Off New Texts

We buy books everyday!
509 E. 4th Ave. • 352-0123
Mon-Th 10-8, Fri & Sat 10-9, Sunday 11-5

Vics Pizzeria



233 DIVISION ST NW (360) 943-8044

Ana makes a lovely vegan sauce!

Bush and Texas Pollution

What's happening to a once respectable state?

by Sky Cosby

Having recently come of legal age, I feel that, as a being living on this planet and associating with its other inhabitants, I have a moral, social and ecological obligation to protest the slaughter of Texas. In a past issue of Rolling Stone, an article ran detailing the many deaths by capital punishment in the sprawling state of Texas. Within the last five years alone, George Bush has ordered the killing of 135 people on death row. It is not my place to judge these lost souls and indeed, capital punishment is not even the focus of this story. In fact, it is a different kind of slaughter I speak of; a much more grotesque, inhuman slaughter.

In the Aug. 31 issue of Rolling Stone, another article on Bush appeared. This article, entitled *George W. Bush and the Environment: A Closer Look At Texas*, revealed horrors previously unknown to me. There are far too many disturbing ecological facts surrounding Texas for me to even begin to cover them all. RS cites a 1996 report by the Natural Resources Defense Council. This report found that up to 1,287 citizens of Houston, TX may have died that year due to air pollution, resulting in cardiopulmonary disorders and chronic bronchitis. Averaged over five years, these deaths combined with the 135 "criminals" killed, result in over 6,500 deaths. Remember, that's just in Houston and the lethal injection

chamber. What about the rest of the state? Bush has sat idly by, refusing to do anything to clean up the air, while 10,000 residents of Texas, the majority of them definitely innocent, have died in the last five years. Please, someone correct me if I'm wrong or if my logic appears flawed in any way ... but that puts him in a class alongside Adolph Hitler, Saddam Hussein and Genghis Kahn in my book.

While his people are dropping like flies, Bush is raking in all this cash from large corporations (totaling well into the millions) for not imposing stricter laws. What the hell is he doing? Why don't they spend some of that mountain of money on clean-up, instead of dodging all these laws for years on

end and patting each other on the back once they've made it through the gauntlet?

Does Bush want everyone in his state to get cancer and die? There won't be anyone left to vote for him except deformed 18-year olds on their last leg and chemo patients. Excuse me if I cut to the chase a tad better than all those worthless politicians, but something has got to change. I guess I just don't understand why, if all these aluminum companies like Mcoa and all these strip mines are breaking the law, they don't just get turned off and boarded up? It's illegal, for God's sake. If I went out and shot someone, I'd probably be locked up for it, right? Yet it's all right for these 300 facilities to walk up and slap thousands of people with a

horrible terminal illness and get away scot-free? Personally, I fail to see the difference between the guilt of those on death row and the innocence of Bush and his army of polluting, carcinogenic money makers.

How could anyone have considered voting for this man who so selfishly and greedily denies his own people clean air to breathe and pure water to drink? While Bush sits on his Armani throne, the cash piling up from the corrupt corporate businesses could be better used for environmental clean-up than his campaign.

Let me be seventeen again; I don't want to deal with this shit. In the meantime, if you're an intelligent human being, read environmental columnist Tom Horton's Rolling Stone article and try to do something about it. Sitting on your ass, watching television all day and letting other people worry about it obviously isn't doing much. Bush just keeps shoving it aside and putting it off and raising his peace flag of free education for all. Who cares what he's for if he's doing all this? Perhaps if President Bush took a dip in the vile chemicals he has allowed to be pumped into Texas' streams, he would come to his senses. During the second presidential debate, Bush said that his primary focus was "what is in the best interests of the people." I ask you this, is it in the best interests of the people of Texas to hack up a lung and die a horribly strung-out, miserable death? Damn him for contributing to the railing of what used to be a respectable, beautiful state.

A College Education

by Adrian Byers

Is it winter? The time when the weather causes that seasonal emotional disorder—the cold gray sky seeps into your soul and creates mood swings greater than any roller coaster? Or is it more than the weather?

While walking out of the library this morning, I saw the maintenance crews placing more spike strips on the overhanging areas above the library lobby. Why are we using these barbaric affairs with sharp metal spears facing up? Trapping was made illegal by that new initiative last November, but I guess this has to be legitimate. Wouldn't it make more sense to just put up a mesh screen so no birds could go in there, instead of slicing their legs and underbellies apart? So far as I've seen, it hasn't stopped them. They still land above the lobby area, and bird droppings are still coming down.

Maybe it's the Fine Host and Union of Student Workers issues. I now pack a lunch and bring coffee in the morning because it's too damn expensive to buy food here anymore. The nutritional value hasn't increased, and I haven't received a raise great enough to compensate. And since I don't receive financial aid, what I earn working is what I have to spend. Possibly it's the appearance of a Security Guard watching me peruse the beans and rice. Close-in surveillance of people debating: donuts vs. muffins? ... That was on Monday. On Tuesday, he was dressed in sweat pants, black jacket, and a knit cap—still obvious, walking back and forth with a cup of coffee in his hand. If I were to give Fine Host the benefit of the doubt and say they were paying him the minimum wage of \$6.72, and if he worked five days at eight hours each, that would work out to \$268 a week. If he were getting \$10 an hour, the same amount of time, that would be \$400. Is that much food being taken from the Deli? Is this really justifiable?

I now see more of the inner workings of the college than before. I hear about affairs unbeknownst to the general Evergreen public, such as what policies are being implemented, what decisions are being made, and why that choice was made. It's dishearteningly political. I've seen several good people leave their jobs here due to frustration, budget issues and the prospect of a more satisfying job. Money makes the world go round (the latest Presidential inauguration proved that point yet again). It just wounds me to see that it is so dominant around my own little haven.

I grew up on the East Coast. Not many people know of Evergreen. Those that do think of the publicity surrounding Mumia speaking at graduation two years ago. Or of the radical students sporadically catching the mainstream press. There is an aura of mystery, wonderment, and respect surrounding Evergreen. I would really hate to disillusion them with my own observations: that Evergreen is now (seemingly) all reputation, and that that reputation is all that's left. The rest of it graduated, or is dead.

I'm not as well informed as I would like to be. I don't know why some of these happenings bother me. I can't even put my finger on what it is that is irking my soul. Maybe there is some logic behind this ... madness??

Maybe all of *this* is my college education. It is said that what you learn in college is not just in the classroom. Real world events happen everywhere, and there is not much you can do to stop them. Fight one battle, and another enemy comes in from your blind side. The pen is mightier than the sword, but it takes cash to buy the pen. There is seemingly nothing safe and secure anymore. Idealism isn't what it used to be, and it doesn't seem to show its face here anymore. Is this what you are supposed to learn in college? If so, I'm ready to graduate.



An Interview With An A-Dorm Hero

Every day, Evergreen students wake up (well, almost everyday) and fight their own personal battles or vices. Unbeknownst to us, however, is a much larger battle that one courageous student is strong enough to face everyday head-on. Josh Barbour wages in a constant struggle on the remote shores of Uropa (pronounced "yer-rope-ah"). I was fortunate enough to speak with Josh during his time away from Uropa. Josh, an A-Dorm resident when not engaged in "keeping the peace," is on a brief visit to Evergreen in order to better elucidate the current situation in Uropa.

Emily: Josh, what can you tell our readers about the Uropa situation?

Josh: Well, basically we have to start with the rudimentary source of a conflict—basically it's Us against Them.

E: How's it looking for Us?

J: It's very confusing because They are very small and They're hard to get in our sight. Not to mention that we are working with hi-tech ultra liberal warfare technology that is worthless.

E: What threat do They pose to our Evergreen student body?

J: It's all a matter of what you like to eat. It echoes back to the eternal Dr. Seussian "butter-on-top-or-butter-on-bottom" question, only now it's with tofu and jelly.

E: How did you get so involved in this cause?

J: Well, the syndicate told me that by joining the war effort in Uropa, I'd be afforded the opportunity to fight "conserves." At the time I thought that "conserves" was a slang term for young republicans. Turns out a "conserve" is actually short for "shoe conservation storage facility unit." Conserves are our only bombing target, you see. That's the real threat the enemy has on us: their huge amounts of stockpiled shoes.

E: How is that a threat?

J: Would you like to walk to class wearing cardboard and grass on *your* feet?

E: You have a point, Josh. Now, is there one thing you'd like your students to learn from your struggle in Uropa?

J: They're not supposed to learn anything from our struggles in Uropa. That's the catch. If students were to know anything about the struggle, things would change drastically. It's a lot like politics in general; you know it's there, but you don't know the details, and if you did, it would be even more discouraging.

Josh Barbour plans to continue his fight in Uropa, despite the false pretenses that drew his interest in the first place. When asked how long he plans to stick with the war effort, Josh merely replied, "Until justice is served."

Linguistic TESC book guy Alchemy

by Corey Pein

What is the difference between a State College and a hippie commune? One gets the blessing of the State Accreditation Committee, and the other gets nothing but ridicule. When the Accreditors come around, the college's staff scramble like a Burger King night manager under the glare of the County Health Inspector. The Accreditors want Evergreen to prove its worthiness. This means results ... on paper. The Evergreen faculty have handled this situation as craftily as Sisyphus tricked the gods: they have tried to make a pile of entrails look like choice eye of round.

"Who decides if a graduate communicates effectively or 'demonstrates learning'?"

The Gen. Ed. Disappearing Task Force is reworking the core curriculum, introducing 101-style prerequisites under the title of a "Common Core Cross-Divisional Model." The stated purpose behind this is to "[increase] student access and exposure to arts, humanities, physical and natural sciences, social sciences ... through a mix of easily identifiable cross-divisional programs ... and creation of a Fall quarter, 8-credit 'common core.'" Nowhere in the DTF-to-faculty memo is the system of standard, required subjects referred to as "prerequisites." Most impressive.

The DTF has also devised a list of "Expectations of an Evergreen Graduate." Marvel at their meaninglessness: 1) Define and assume responsibility for your own work; 2) Participate collaboratively and responsibly in our diverse society; 3) Communicate creatively and effectively; 4) Demonstrate integrative, independent and critical thinking; 5) Apply qualitative, quantitative, and creative modes of inquiry appropriately to practical and theoretical problems across disciplines; 6) As a culmination of your education, demonstrate depth, breadth, and synthesis of learning and the ability to reflect on the personal and social significance of that learning.

Doesn't "defining" one's own work imply that the student will create his or her own curriculum, thus negating the purpose of a standard set of educational requirements? What is "integrative" thinking? Who decides if a graduate communicates effectively or "demonstrates learning"? The same people that wrote this list? It's damned jargon and gibberish! I hope for the sake of all Evergreen students that these proposals will be used only to appease the Accreditation gods and not actually applied.

by Gwen Gray

As the least pleasant month of the year (excluding February and November) finally prepares to go away, I am attempting to notice things about my life which are nice. I have become overwhelmed by the time of year, the weather, baby Bush's honeymoon period, and the started-in-California-but-won't-stay-there energy shortage, and need something positive to focus on. In that spirit, I have decided to write about something I like, for no other reason than that I like it.

One of the little things I treasure about Evergreen is the presence of the vendors in Red Square and the CAB. They sell good stuff and most of them tell good stories and don't seem to care much if you buy anything or not. I like the people who sell random collections of blankets, and the people who sell strange food, and the people who sell massages, but my most favorite vendor of all is Book Guy.

Book Guy is my name for a man who is actually called Bob Harris, and who sells used books out of open-topped cardboard boxes. He comes to Evergreen three times per quarter, sets up in the lobby of the CAB, and obstructs the flow of traffic by radiating such coolness that people gather even if they don't know who he is or what he's doing there. I always dance around happily when I see him setting up, and then have to

calm myself down enough to browse and spend twice what I can afford. What he does is not unusual, but the way he does it is amazing. He sets up with his boxes of books covering three tables and a bunch of the floor, and you can look through all those books *and never, ever find a bad one. Virtually all are books everyone should read, whether they know it or not.*

The first time I met him, I found with limited effort (about ten minutes of looking around) four Kurt Vonnegut books I'd been wanting, plus one I didn't know existed, not to mention *The Hobbit*, Dante's *Inferno*, Zen and the Art of Motorcycle Maintenance, a book of Van Gogh's letters, Upton Sinclair's *The Jungle*, and Ursula LeGuin's *The Wind's Twelve Quarters*.

I was happy. Happy Gwen had only spent thirty dollars. Yes, I was already reading about seven books, some of which were from the library and soon to be due, not counting my reading for class. Also, I had no bookshelf space left at all, and was probably destined to pile my purchases on my floor somewhere, but I chose to ignore those petty details and focus on the important thing: I had twelve really nice new books.

Since then I've seen Mr. Harris four or five times, and have become increasingly grateful for his existence. Somehow, he regularly shows up

when I'm having a really bad day and need to be reminded that humanity isn't utterly worthless. He knows me by sight now, and usually talks to me while I browse, contact with fellow bibliophiles being one of the primary benefits of his profession. We talk about the sad state of affairs in the literary world today, and the possibility that every plot of every book can be distilled into one of Aesop's fables, and the exquisite torment of spending one's life finding wonderful books, only to sell them.

He does not say, and actually seems not to mind, that he not only sells them but sells them to snot-nosed college kids who will probably use highlighter all over them and not even have the sense and taste to mark the good passages. Sometimes, when I am especially pleased to see him, I ask when he'll be back and write the answer down (early March, if you're interested). The conversations usually end when I ask if he has any bags, which he never does. This is generally something of a problem for me, considering that I never get away with less than eight books. He is always apologetic about it and says, "You know, I probably *should* have bags." I always assure him that his mere existence makes up for such petty problems, and lurch off, hunched over my prizes, slightly happier to be alive. Bob Harris is a small patch of niceness in my life, and I celebrate him as such. And that's my pointless story.

Understanding is peace

by Nikolai Kazakov

Back in 1993, I worked for U.S. Peace Corps in Vladivostok, in the far Eastern part of Russia. According to the mission statement, there are three main goals of the organization and each individual volunteer: to provide technical help, to provide first hand-information about the U.S. and Americans to the local communities, and to learn first-hand about life and people in the country of service to share with Americans upon return. I had no problem with the first goal, and considered it the most important. I wondered, however, about the importance of goals two and three. The information was available, and anybody wanting to find it out could get it from the media or visit a library and read numerous encyclopedias.

The first realization that something was wrong about my way of thinking, but right about the goals of the Peace Corps, came later. We met a group of volunteers at the Vladivostok airport. A bus driver looked at the fresh-from-the-plane group for a couple of minutes, and then suddenly asked me why they were so small. I didn't understand what he meant—they looked normal to me. But he clarified that the "Americans" in the movies that he had seen were always big and strong, and could single-handedly outsmart and defeat a whole army of enemies. I was shocked that somebody could seriously use that type of movie as a credible source of information. As it turned out, the driver was not alone in seeing things that way. The same

stereotypical image of Americans also created several problems later in our trip by having set expectations of the volunteers at their assignment sites high above what any person alive could actually attain.

"...[I]nformation is thoroughly selected to represent only one side of people and events."

Several other realizations came later. The last one happened after I arrived in Olympia, a little bit over a year ago. Talking to different people around the area, I found out many of them have a very twisted idea, if any, about regular life in Russia, especially during its Soviet times. It didn't take me long to figure out the reasons. Same as all over the world, people use media as their primary source of information, and in the U.S., Russia is largely misrepresented. I am not trying to say that today's media information is incorrect or distorted. Not at all. The facts and numbers are all right. It looks to me, though, that this information is thoroughly selected to represent only one side of people and events. More often than not, this is the gloomy side. I can only guess what the stories sounded like when the Cold War was in full swing (probably close to how the Soviet media at those times described Americans). People that receive and process only that information often develop their own image and vision that could be distorted

and have little connection with reality.

In this article I don't want to discuss those reasons. All I want to say is nowadays we don't have to follow the path of information paved for us by the interests of other people. The recent political and technological events opened various venues for people-to-people contacts as an alternative source of information. Internet, e-mail, and numerous international exchange programs provide access to that source. The Edmund Muskie Fellowship, an international program implemented by the NGO Open Society Institute, brought three Russian students (including myself) to study in the Masters in Environmental Studies program at the Evergreen State College. As a group we decided to use this opportunity to share our vision and our understanding of Russia with interested individuals from TESC and local communities.

Over the passing years and events, I transformed my understanding and vision of Peace Corps goals, and believe their second and third outlined goals are more important than their first. When people know more about each other and can find a better understanding of one another, little space remains for any kind of conflict between them. That belief sets Peace Corps' goals two and three as goals one and one on my personal agenda.

On February 15, the Russian TESC students will conduct a presentation called 'Our Russia' followed by a panel discussion. The presentation starts at 4 p.m. in lecture hall 5.

THE INTERVIEWS: BILL LASH

by: Shasta Smith

I am talking with Bill Lash, the new Women's Volleyball head coach. He has coached at St. Martins for the last three years. He is from this area, and has been playing, reffing, and coaching for the last 25 years. Let's get to know him.

CPJ: Bill, tell me a little about where you are from.

Bill: Well, I grew up in Tumwater and graduated Tumwater High School in 1970. I was in the Air Force for four years and other than that, I've been here all my life.

CPJ: How long have you been involved in volleyball?

Bill: Well, actually, I've been doing it off and on since junior high. I got serious about it in the mid-seventies.

CPJ: You played 5-10 years, then coached?

Bill: Well, actually, I'm still playing. I played club ball in the Air Force, USAF Volleyball. I had an interest in reffing, so I reffed for 18 years and slowly got involved in coaching. I started coaching at North Thurston High School; it was my first coaching job.

CPJ: Then what did you move on to from there?

Bill: Centralia College. I was down there for five years, then I moved onto St. Martins for three.

CPJ: How did you do at St. Martins?

Bill: My first year there we took second in the league, broke every school record there was; we just had a great time.

CPJ: Was that a new program?

Bill: No, there was an existing program, but it was kind of run down. We were in a pretty tough league; I just happened to hit it just right. My second year we got second as well. We were 4-22 my last year there, a lot of freshmen; it was a

rebuilding year.

CPJ: You rebuilt the program there; have you ever built a program from scratch?

Bill: No, I haven't ever. This is really exciting.

CPJ: How are you going about doing that?

Bill: Well, I'm trying to get a mixture of veteran players, junior college transfers, and sprinkle in some freshmen. That way we have good turnover and a solid base of leadership to start with.

CPJ: Have you started practicing yet?

Bill: Our practice won't be starting until August.

CPJ: What are you doing right now to generate interest, check out players, recruit...

Bill: Well, I've gone to the community college tournaments at the end of their season, I went to their playoff tournaments ... and I have a pretty wide reach as far as friendship with coaches, so I've contacted a bunch of coaches. I had a workout where 18 girls came in and tried out two weeks ago here, and they turned out real nice.

CPJ: You mentioned tournaments you have coming up.

Bill: Yeah, we're running USVB youth volleyball tournaments. It's Junior Olympics. It's fundraising money for our college team.

CPJ: And you have some teams involved in that?

Bill: Yeah, I have five teams. I have a 13 and under, 14 and under, two 16 and under, and an 18 and under.

CPJ: So with all those teams, what is your theory of coaching? How do you lead them?

Bill: You start with a foundation when they're young. If they learn the right skills, they can spend the rest of their years honing these skills and that can help us down the line.

CPJ: With Evergreen, what do you plan to do right away? What do you think the keys are to getting a successful program going in the early months of the season?

Bill: Well, I think it's like anything else that's new. Everyone's gonna be a little scared, but I think if you enjoy what you are doing, make it enjoyable for everybody, make it a fun thing ... 'Cause you know this is our sport and we love doing it, so why not enjoy it? You'll do better and succeed better if you have that mindset to begin with.

CPJ: So, what do you think about winning?

Bill: Well, it isn't everything; it's just 99.99%.

CPJ: What sort of support have you gotten from Evergreen since you've been here?

Bill: Well, it's been quite a pleasant surprise. The sports department here has been real supportive of me. I've come up with some new ideas and they've allowed me to run with them. I'm excited; if I need something, they seem to come up with it. I'm quite pleased.

CPJ: Is there anything you'd like to tell the students that might be interested but don't know anything about volleyball?

Bill: Contact me, come out, and let's play.

- Bill's extension is 6528. You can also get ahold of the Sports Editor at the CPJ, and I will send you his way.

POSTER THIEF

by: Shasta Smith

What does one call a person who pulls down another club's or instructor's posters? A political rival, as they conveniently label themselves ... um, no. A wall cleaner ... probably not. A person with a personal problem ... probably. What they really are is a THIEF. When flyers are pulled down around campus, for reasons other than school cleaning, it is a defilement of personal work, progress, and money. They are limiting your voice to reach the students here on campus or whomever else you are trying to reach. It is also a theft of your time, money, and effort.

The Bak Shaolin Eagle Claw Club and Shaolin Aerobics Class has had to deal with this in recent months. A certain individual has pulled down large quantities of posters advertising an aerobics class and ads for a club fundraising movie night. When two members of the club confronted him in the act, he claimed it was political, when in fact, the poster theft was motivated by business, greed, and jealousy. The act was reported to campus police and a grievance petition was filed.

Which brings me to my next point; what sort of redress can occur for someone who is caught red-handed? There is a grievance process here on campus and while they deal with a number of things, their role is not clearly defined when it comes to the resolution of these types of issues. They do not seem to want to deal completely and decisively with certain issues, to face them head on. It could be so as not to offend anyone.

There is also the point that the grievance process might be trying to play to all the sides so much that they lose sight of what they are doing, and the grievances filed are not taken care of in a satisfactory manner. In this case, after an opaque and diffuse six-week investigation, the result was felt to be an insufficient offer of reimbursement, an incomplete statement of findings and lack of closure on the matter, and what amounts to a minor slap-on-the-hand to the individual.

My question to you is this: What should we do with someone who wants to over-glorify a personal problem they may have, or create a conflict over business jealousies and then acts criminally, and attacks another club, teacher, or class? Have you had any grievances that were not handled to your satisfaction? Please e-mail me any comments, reactions, or complaints on this issue. My email is smisha13@evergreen.edu, send in e-mails by February 7th.

Detach below and send to... Oscar Soule, Lib. 1412

NAME _____
MAIL STOP _____
PHONE _____
[Address if you want the tickets mailed off campus: _____]

Fill in the appropriate boxes below:

[] I would like _____ seats for Opening Night, April 2
[] Enclosed is \$ _____ @ \$15 per seat
[] Bill me later

2001 Mariners' Opening Night April 2
Invitation/Order Form

by: Oscar Soule

Can the good taste left in our mouths by last year's playoffs be soured by A-Rod's imitation of Willie Sutton? Remember, Sutton responded when asked why he robbed banks: "That's where the money is!" You have a chance to see the latest version of the Mariners. We have 252 tickets to see the M's open the new season against the Oakland A's on Monday evening, April 2. I urge you to get your request in early. Once again, it will be first come first served. I have paid \$15 per seat and that will be your cost, as well. There are no group or children discounts on Opening Night. Our seats are in the 300 level down the right field line. And yes, the M's raised the price a dollar over last year.

Last year we combined Opening Night with a fund raising event for

TESC's Jackie Robinson Scholarship. This year we are not. However if you are willing to add more to your check, I will see that anything beyond \$15 goes to the Robinson Scholarship. You will *not* get a tax deduction notice for this. Those of you who wish to make a substantial donation should send a check directly to The Evergreen State College Foundation and note that it is for the Jackie Robinson Scholarship [TESC Foundation, Olympia, WA 98505]. Remember, the Foundation Office will not be dealing with Opening Night tickets.

This should be an interesting year for the Mariners. We have arguably lost the three best players at their positions over the past three years. This year we appear to have proven pitching depth and little

offensive clout. The minors have a fair number of youngsters, but they are one to three years away. However, there could be a few changes made before the season starts. Be there Opening Night to find out. Will Pat "The Magician" Gillick pull a slugging 3rd baseman or right fielder out of his hat in exchange for Tomko and/or Halama and/or more? Will Boone and Sweet Lou be on the same page this time? Will Al Martin live up to his career stats? While we know *Who's on first*, the real question is, *What's on third*? Can Ichiro win his 8th consecutive batting title? These and more lurk in the spacious confines of Safeco Field. And the 2001 All-Star game is at Safeco Field. Don't ask me for tickets. I have already tried. However, if you have any, please let me know.

SPORTS

MEN'S BASKETBALL

by: Shasta Smith

This week the men hosted two home games. In the first game against the Oregon Institute of Technology on Jan. 26, the men lost 89-75 in a game they never led. Trelton Spencer had a game high 33 points and became the first Evergreen man to record back to back 30-plus point games. Andre Stewart had 20 points on the night.

The following night was a heartbreaker for the men. They lost 87 - 76 to Southern Oregon in a game that did not reflect the score. With nine minutes left the game was tied 52-52; even the fouls were tied at nine. With five minutes left, Jimmie Richardson fouled out, leaving the game with 7 points and 6 rebounds. The men were down by seven when he left. Speaking of fouls, the game had a total of 59. Evergreen put in a record 33 of 40 from the foul line. The two top scorers in the game were Trelton Spencer who put in 23 and Andre Stewart who had 20. Stewart also had a game high 8 rebounds. A.J. LaBree was a spark off the bench for Evergreen; he put in five points in 30 seconds off the bench late in the game to bring Evergreen within 8. Back to the fouls. Down by seven with 49 seconds left, Jackie Robinson became the second foul casualty for Evergreen. The refs called a technical foul on the Evergreen bench for Robinson stepping off the floor too soon. They then called two technicals on the coach when he questioned the call, so he was thrown out of the game. Southern went up 10 on the three technical foul shots and held onto the lead in the last minute to win.

For the third time in his career, Trelton Spencer was named CCC player of the week. Spencer was given this honor after tying the Evergreen steal record, then beating it the next game, as well as recording his ninth 30-plus point performance, passing Aaron Foy to become the all-time assist leader at Evergreen, and averaging 25 points, 6 assists and 5 steals a game. The two-time All-American Spencer holds 10 Evergreen records and is en route to his eleventh; more on that as it develops.

WOMEN'S BASKETBALL

photos by: Ezra Small

by: Shasta Smith



The Evergreen women hosted Eastern Oregon on the 19th here at home. They lost 61-45 in a game that saw them come back to within 10 in the second half, but eventually lose. Michelle Ramsgate stepped up for 15 points with 7 rebounds, and right behind her was Linnaea Jablonski, who scored 11 points and had 7 rebounds as well.

The next night Albertson came to town, and while the women lost 75-46, they had a victory of sorts. Alyson Pincock, the Cascade Collegiate Conference player of the year last year, was held to a season low 9 points and 4 rebounds. For Evergreen, Jablonski recorded a game- and career-high 17 points to go with her 9 rebounds and one block. Heather Johnson came off the bench and scored 14 points to go with 6 boards.

On the 25th the women were in

Salem, Oregon playing Western Baptist. The women lost the game 106-55. The women were playing without point guard Katie Vernon and forward Rebecca Henrie. The 106 points are the most the Evergreen women have ever given up in a game. Heather Johnson had a game high 22 points and Michelle Ramsgate followed with 13 points and 6 boards.

The women were in Ashland playing Southern Oregon on the 27th. They lost 95-52. Heather Johnson led all scorers with 19 points and 12 rebounds. Michelle Ramsgate was perfect from behind the arc at 2 of 2 and perfect from the free throw line at 6 of 6. She ended the night with 14 points.

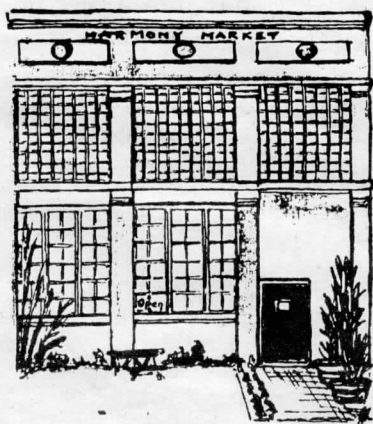


Harmony Antiques & Karinn's Vintage Clothing

Welcome Back!

Great Gift Ideas

*candles*soap*teacups*crystal*



**HARMONY
ANTIQUES**
113 Thurston Ave. NE
Downtown
Olympia
OPEN DAILY
(360) 956-7072

Complimentary Batdorf and Bronson coffee served daily.

**Your friendly neighborhood antiques,
collectibles, & giftware store**

AMoS Computers

2410 Harrison Ave. NW
West Olympia
360.786.5112
sales@goamos.com

Olympia's newest Apple Specialists!

**\$200 Instant Rebate on
select iMacs until Feb. 19th
(DV+ and Special Edition only)**



Authorized Reseller
and Service Provider

CD-RW DRIVES

EZQuest 32x4x4x USB \$225
EZQuest 32x8x4x Firewire \$330
EZQuest 32x12x10x Firewire \$459

STORAGE

VST USB Floppy Drive \$ 99
Imation LS120 Ext. USB \$179
Iomega 250MB USB Ext. \$179



**New Power Mac's and the
amazing PowerBook G4
coming soon!**

Amos PC's- Custom built for any budget!!!

Barebones 2000
Intel Celeron 600 MHz
64MB SDRAM
10GB Hard Drive
ATX Midtower
8MB AGP Video
16 bit sound
56K CD-ROM
Windows Millennium
Mouse Keyboard Speakers
Monitor not included
1 year parts and labor warranty
SKU SYS COMETRIX

\$699

AMD Home System
Duron 800 MHz
128MB SDRAM
20GB Hard Drive
52X DVD-ROM
Supra 56K V.90 Modem
FIC ATX Motherboard w/Audio
ATI Rage 128 32MB AGP
Yahoo Colored Speakers
Windows ME Mouse
Keyboard 15" Monitor
1 year parts and labor warranty
SKU SYS AMHOME

\$999

SCANNERS

Umax 2000P Parallel \$ 99
Umax 2200U USB \$149
Umax 4000U USB \$235

PRINTERS

HP Deskjet 640C Inkjet \$149
HP Deskjet 935 Inkjet \$245
HP Deskjet 950C \$325

Piii Netsurfer Pro
PIII 800 MHz
128MB SDRAM
20GB Hard Drive
10x8x32 CDROM
Supra 56K V.90 Modem
Yahoo Colored Speakers
ASUS ATX Motherboard w/Audio
ATI Xpert 2000 Pro 32MB AGP
Windows ME Mouse
Keyboard 17" Monitor
1 year parts and labor warranty
SKU SYS NETSURFER

\$1299

AMD Techmaster
Athlon 1GHz
128MB SDRAM
40GB Hard Drive
12X DVD-ROM
Supra 56K V.90 Modem
Atec Lansing ACS33 Speakers
10x8x32 CDROM
GeForce 2 32MB AGP Video
Mouse Keyboard
19" Monitor Windows ME
1 year parts and labor warranty
SKU SYS TECHMASTER

\$1499

New Store Hours!
Monday-Friday 10AM-7PM
Saturday 11AM-5PM
Closed Sundays

SPORTS

SWIMMING

by: Shasta Smith

The Evergreen State College Swim Team competed on the 19th of January, and while the team lost overall, three of its members did extremely well.

Ryan Miyake had an exceptional race in the 500 free. Miyake won the 500 with a time of 4:55:88. With his winning time, Miyake qualified for the national meet. The time was also the second fastest time in Evergreen history for the 500 free. Miyake also had a career best time in the 200 medley with a 2:03:86.

Amber Totz is now the third Evergreen woman to qualify for the nationals in an individual event. Totz swam a 1:04:87 in the 100 fly, her fastest of the season and the third fastest on the Evergreen all-time list.

Misty Westphal broke the two records she set earlier this season in the 500 free and the 1000 free. She beat her 1000 record by sixteen seconds.

The team is now preparing for the Northwest Conference Championships, which are being held here at Evergreen in mid-February.

INDOOR SOCCER

by: Shasta Smith

Indoor soccer has started here on campus and for all of you interested, I hear it's quite a fun league. There is co-ed Mondays, men's Wednesdays, and women's Fridays. The co-ed night features 10 teams and everyone has a good time. On Wednesdays the competition heats up as seven men's teams go at it. There aren't any dominant teams so each game is back and forth. The women play Fridays, and they have a relaxed good time.

The indoor leagues take place in the Pavilion, and this year it is a safer place to play. The last couple of years the rickety walls have been a hazard, but this year they did some work and reinforced them to make it a better playing environment. The games start at 6 p.m. if you are interested in watching or getting onto a team. You can also bring in a team of 10 or more for 200 dollars. Hope to see you out there.

CREW

by: Shasta Smith

6 a.m., before the sun is up, and the men's and women's crew teams are already at the gym practicing for their upcoming spring season. The team is coached by Aaron Starks, and despite the strict no late policy, the team is 30 members strong. They were up to 60 at one point, but the early mornings and hard training weeded out those not prepared to row.

Crew is the oldest intercollegiate sport in America, and as the sport progresses through the years, the technology gets more and more advanced. The cutting edge in technology keeps some boats ahead of others. Enter The Evergreen State College, new to the sport and rebuilding boats 20 years old. The team expects to be one of the best in the Pacific Northwest, but they will have to work extremely hard on and off the water to keep up with the competition.

The team has raised \$19,000 to get equipped and refurbish their boats, and they will be prepared to hit the water against PLU and UPS March 24, on American Lake in Tacoma.

SPORTS SCHEDULES

BAK SHAOLIN EAGLE CLAW

KUNG FU

-beginning classes weekdays at 5 PM at the Longhouse

SHAOLIN EAGLE AEROBICS for WOMEN

-classes in the CRC Jan. 22 - Feb. 26; at 5:30, 6:30, and 7:45 PM

WOMEN'S BASKETBALL

-1 home game this week
-Feb. 3 v. Northwest at 7:30 PM in the CRC

MEN'S BASKETBALL

-1 road game this week
-Feb. 2 v. Northwest (away) at 7:30 PM

SWIMMING

-Northwest Conference Championships Feb. 15-17

TENNIS

-NEEDS WOMEN PLAYERS; contact Rick Harden ext. 6858

INDOOR SOCCER

-indoor soccer Mon.-Wed.-Fri.; starting at 6 PM in the Pavilion

CREW

-March 24 regatta at American Lake, Tacoma against PLU/UPS

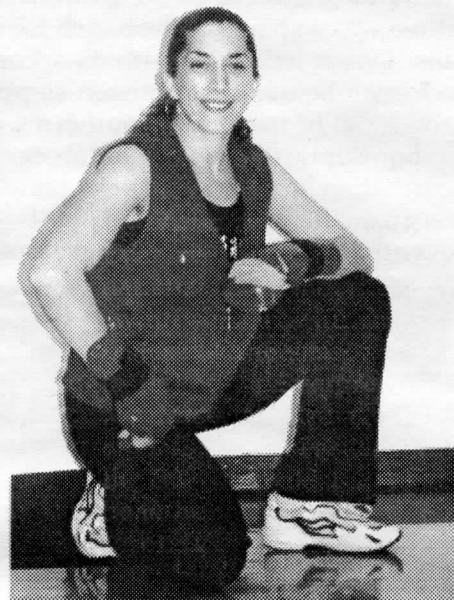
WOMEN'S RUGBY

-practice for the spring season Wed. - 2:30 to 4:30 pm

Sun. - 1 pm to 4 pm

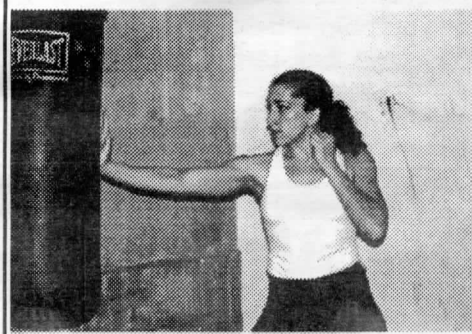
WOMEN'S VOLLEYBALL

-Tue./Thu., 7:30 pm club playing, all welcome.



SHAOLIN EAGLE AEROBICS for WOMEN

Shaolin Eagle Aerobics for Women is now being offered at Johansen Ballet School. The class is taught by Jessie Smith, #1 rated fighter in the Pacific Northwest. The class is 9:30 - 10:30 AM. Come for the fun, fitness, health, and self defense. There is also beginning and advanced classes on-campus in the CRC at 5:30, 6:30 and 7:45 PM.



WOMEN'S RUGBY

by: Shasta Smith

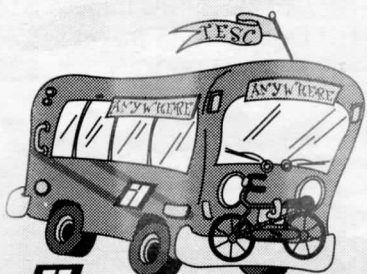
The women are organized and practicing. The Evergreen Women's Rugby team has gotten itself registered in the Pacific Northwest and is ready to go play. The team is hoping to get the men's former head coach out to lead them. I talked with Trevor (the coach), and he was excited about coming out to coach. In fact, he told me he "absolutely wanted to coach." So good luck to the women as they approach their first game of the spring season; more on that as it draws near.

Oh, the Places You'll Go

on Intercity Transit!

Show your Evergreen student ID when you hop an I.T. bus and ride free. It's that easy! Skip the parking hassles, save some cash, and be earth-friendly. I.T. is your ticket to life off campus!

For more info on where I.T. can take you, pick up a "Places You'll Go" brochure and a Transit Guide at the TESC Bookstore. Or call I.T. Customer Service at (360) 786-1881 or visit us online at www.intercitytransit.com.



Intercity Transit
Fares paid through student programs.

Revitalize Yourself...



...with a Graduate Degree from Eastern Washington University

Eastern Washington University offers over 40 programs in diverse fields; many of these programs are convenient and flexible for working professionals. Courses are held on the main campus in Cheney as well as EWU's two Spokane locations during evenings and weekends.

"I credit the Master of Public Administration Program with facilitating the right mix of professional connections and practical experience that led to me attaining the position I hold today. I continue to use the professional expertise of the faculty on different issues with great success."

- Jennifer Pearson - Stapleton

MPA '98
Executive Director,
Spokane County
Domestic Violence Consortium

For more information about specific EWU graduate programs, please contact the Graduate Studies Office at (509) 359-6297 or e-mail at gradprograms@mail.ewu.edu

EASTERN WASHINGTON UNIVERSITY

SURVEY

Please drop your completed survey in the box in the entrance to the Campus Bookstore. Your input is appreciated; thank you.

- Are you: Student, Staff, Faculty, Administrator or Other?
- What are the most important aspects of the Evergreen forest to you? Rate each value in order of importance, 1 being least important, and 6 being most important.
 - ___ Ecological
 - ___ Conservation
 - ___ Economic
 - ___ Social
 - ___ Value/Recreation
 - ___ Education
 - ___ Spiritual
- Have you walked the path from the main campus to the organic farm (West reserve)?

Never	Rarely	Frequently
-------	--------	------------
- How often do you visit other areas of the campus?

- North Campus preserve (beach trail)		
Never	Rarely	Frequently
- East reserve (between Parkway, Overhulse, and Driftwood)		
Never	Rarely	Frequently
- South reserve (between Parkway, 17th, and Simmons Road)		
Never	Rarely	Frequently
- TESC campus is 1,000 acres. 740 of these are forested. Out of the 740, the Sustainable Forestry Program is interested in creating a demonstration forest by thinning approximately 7.5 acres located within the organic farm cluster. In your opinion, is a sustainable forestry experiment an appropriate use of campus resources?
- Are you familiar with the sustainable forestry program? If so, from which source?
 - ___ Friend
 - ___ Web site
 - ___ Film fest
 - ___ Community meeting
 - ___ Sustainable Forestry Student
- Would you like to be on the sustainable forestry mailing list? (You may use a sign-up sheet if you do not wish your email to be attached to this survey)
Email:
- If the proposed trail or other plans are approved, would you be interested in volunteering to help implement them?

The management plans for both the CSO's and the Habitat Conservation Plan will be completed in February. Presentations of these proposals will be held at The Evergreen State College. If any of the management options are approved, they will hopefully be put into action in the spring. The Olympia community is encouraged to become involved in this process by contacting the program website and attending the outreach meetings. Many of the Stewardship options will be in need of volunteers, and there is a survey that can be filled out. Direct any questions or survey requests to sforestry@hotmail.com. The program's website is available at www.evergreen.edu; just click on the program web pages. Portions of this article were originally published in the February 2001 issue of the Olympia GreenPages.

SWEATSHOPS

to enforce within their factories the standards set forth in the code of conduct. If a company is found to be in violation of our code, we have the right to terminate our business relationship. The WRC monitors factories by commissioning unannounced, surprise inspections of those factories where workers are reporting labor violations and abuse. **Evergreen's Support for Sweatshops and the FLA**

The administration, and in particular, former vice-president of finance administration, Steve Trotter, continue to provide excuses as to why they are not discussing Evergreen's support for the sweatshop industry through our membership in the Fair Labor Association (FLA). Don't be fooled; although this organization has the words "fair labor" in the title, the name, just like the organization, is a corporate-driven public relations scam designed to nurture the sweatshop industry through the enforcement of weak labor and human rights standards within global garment-producing factories.

The FLA's procedure for identifying sweatshop abuses is highly ineffective. Each year, garment corporations select 10% of their total factories worldwide to be inspected by an external monitoring organization such as Price Waterhouse Coopers. The garment companies select and pay the monitoring organization, choose which factories will be monitored, and announce the proposed inspection to factory management. This announcement allows sufficient time to "tidy up" the working conditions to pass inspection.

The FLA is dominated by garment corporate interests and representatives. Both unions who were involved in the creation of this organization refused signing its charter document on the grounds that the organization was ineffective in promoting workers rights. Those two unions were the United Needletrades, Industrial, Textiles, Employee Union (UNITE) and the

Wholesale, Retail, Department Store Union.

Campaign History

This campaign began last summer, in discussions with the bookstore manager and the interim vice-president of finance, Steve Trotter. Out of these discussions came specific steps we were to follow in order for our proposal to be accepted. We were repeatedly told that if we followed these administratively prescribed steps, the proposal would be accepted.

The Wednesday before Thanksgiving, our completed proposal was delivered to the administration. We were told to expect an answer in several weeks. Over the past two months, a decision on our proposal has been repeatedly postponed. Most recently, after a cancelled meeting during week two, we were told by Steve Trotter that the administration will "try" to have a meeting during week three. Guess what? It didn't happen. Two months of stalling on this campaign is what led us to issue a deadline for a response to our proposal on or before Jan. 26. The administration has chosen to ignore this deadline.

Trying Isn't Good Enough

The best the administration can say after two months is that they'll "try" to have another meeting. Try? What have you been doing all along? As you "try" to have another meeting, the workers in sweatshops continue to be exploited by garment corporations, continue to produce clothing for our bookstore, and we continue to do nothing about it. While you try to have another meeting, Evergreen continues its membership in the corporate-driven FLA and DOES NOTHING TO FIGHT SWEATSHOPS, except "try" to have another meeting. Try this on for an ironic coincidence... The only organizations that support the FLA are: garment corporations, corporate-funded NGOs, and heavily corporate-dependent colleges and universities. One of the founding members of the FLA is Nike, a company notorious for its utilization of sweatshop labor. The

Continued on page 14

COOPER'S GLEN APARTMENTS

It's not too early to reserve fall apartments.

Units available now. On the 41 bus route.

The closest off-campus housing to
TESC. Private, quiet, friendly atmosphere.

Free cable. Month to month rental
agreements.

Stop by and see us,
or give us a call today.

(360)866-8181

3138 Overhulse Road NW

FOR PEOPLE WHO THINK THERE'S MORE TO LIFE THAN A PAYCHECK.



If you're a young man or woman looking at a humdrum future, there's a challenging alternative—the Army.

Not just the more than 200 skills to choose from, but the lifestyle. The chance to travel, to

become fit and trim and exercise your mental muscles, too. To do things you didn't think you could do. To be proud of yourself and your country.

And you get a pretty good paycheck, too.

360-456-1611

ARMY. BE ALL YOU CAN BE.®

www.goarmy.com

MICHAEL FRANTI

pay attention. His songs have consistently tackled challenging subjects: fear of getting tested for HIV (Positive); gay-bashing (Language of Violence); and the dangers of media overload (Television, the Drug of the Nation). Even when dealing with well-covered themes like love and liberation, herb, basketball, and the right to play music loudly, Franti writes, raps and sings with such sensitivity and intelligence as to make them wholly his own and without a hint of cliché. Also, he's one of the few people to have written a sexy Jesus song.

"Music links the mental, the emotional and the physical, which for me is the same as the spiritual."

Watching Spearhead perform is not unlike attending a very liberal, soulful church. At one point, he even called upon the audience to turn and greet those around them. Franti's insistence on living his faith and celebrating the divine on earth has caught the attention of many within the

activist/musician community. The list of talents that he's worked with over the years is impressive in its diversity: from punk legend Jello Biafra to U2, Julia Butterfly to the Indigo Girls, Gary Snyder to Billy Bragg. One thing that all these people have in common is an insistence on taking their politics at more than face value. Franti was on the streets of Seattle, dodging tear-gas like everyone else at the WTO protest.

Since then, on top of touring with Spearhead, Franti has been speaking out against the American prison industry on the Spitfire tour, founded in part by ex-Rage Against the Machine frontman Zack De La Rocha. Evergreen was lucky enough to land this gig in conjunction with the Day of Absence/Day of Presence. Michael addressed the importance of events like this toward the end of the show.

"Before I got here, they told me that the original intention of the Day of Absence was to show how lacking the rest of the population would be if all

people of color went away for the day, and the Day of Presence, when everyone could come together and work on healing. So I'm glad that there are places in this country, especially in this time, that are even thinking in terms of these ideas.

"People say to me, 'Michael, how do we eradicate racism? How do we celebrate diversity?' And the first thing I say is you have to define what diversity is, 'cause diversity is not just skin color. It's not just ethnicity. It's not just culture. It's also gender. It's also sexual preference. But most importantly, it's the internal diversity that each of us have, what's inside us. The fact is that some of us enjoy making art, some of us enjoy taking walks in the woods, some of us are compelled to get up and say something, some of us like to do it in a gentler way. The internal diversity that is in each of us is what we need to learn to be glorifying and accepting."

With each new album, Franti's convictions (and what's more impressive, his sense of hope) grow stronger and more unshakable.

How does he keep cynicism from waltzing in and taking over?

"Two ways. First is an internal way. Meditation. I try to clear myself, so that I don't have to carry negativity around. The second is just from the inspiration from other people who are in the fight. Like I was saying tonight, we really need to lean on each other during hard times. And we're approaching hard times. We're approaching confrontational times. Music is something we can lean on, our friends are something we can lean on, culture and all that goes along with it. Food, dance, art, which are expressions of our beliefs and expressions of our spirituality, are also things that we need to lean on."

Michael Franti is at least two heads taller than me and I've never felt smaller. Only, it's not the dwarfing that comes with intimidation and fear. It's more of a feeling of standing in a field at night, grass under my feet and stars up in the sky, thankful for a bit of light in a dark, dark world.

SWEATSHOPS

CEO of Nike, Phil Knight, decided to make a multimillion dollar donation to the University of Oregon's athletic program last year. However, upon hearing of UO's withdrawal from the FLA, and its intentions to join the WRC, Phil Knight withdrew his donation. Eventually UO's corporate funding dependency gave in to Phil Knight's pressure, and UO withdrew from the WRC. What's this have to do with Evergreen? For our enjoyment, Nike donated a \$2,500 film projector to Evergreen in 1992. Maybe our

administration thinks that by abandoning the FLA and joining the WRC, Phil Knight will take back his \$2,500 film projector?

Final Frustrations and Our Call to Action

Our frustrations revolve around the administration's lack of commitment and integrity when it comes to seeing this proposal to a conclusion. They asked us to research the two organizations; we did, and now the research isn't good enough. We were told to show there was broad support for our proposal. We took a survey of 400 students, faculty, and staff in which

over 98% of people were in favor of abandoning the FLA and joining the WRC. The administration has chosen to ignore the message sent by those results. It is very frustrating to have waited two months for a decision that should be relatively easy to make. Why are they delaying?

On other campuses, people have employed a variety of tactics to pressure their administrations into making fighting sweatshops a priority. We have elected up to this point to work with the administration, because we thought we were mutually outraged over Evergreen's support for the sweatshop

industry. Apparently, this issue is not a priority for them and thus we need to make it one.

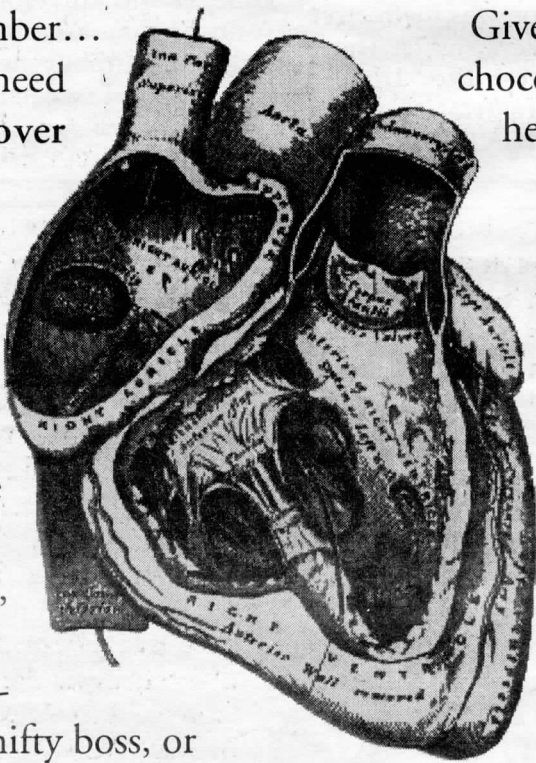
We encourage those who support Evergreen taking some initiative on fighting sweatshops to call Steve Trotter at ext. 6185 or email trotters@evergreen.edu and let him know what you think. If people have questions about the campaign, feel free to email us at esasi@hotmail.com, or call the EPIC office at ext. 6144. Thank you for reading.

****Please don't bother folks in the bookstore, they have been very supportive****

Cooper Point Journal is selling
Valentine's Day *Lovelines*.

Hurry, I said *hurry*, and get your's today! Let your sweetie know that you care.

But remember... You don't need to have a lover on Valentine's Day as long as you have love! So drop a line to your best friend, your favorite co-worker, a nifty boss, or anyone else special to you!



Give them roses, chocolates, candy hearts or make the ultimate Valentine's Day sacrifice and present them with your real heart. But whatever you do, make sure to give them a CPJ *Loveline*!

Spend \$2 for 30 words of undying affection and utter twitter-pation!!

Lovelines are on sale in the CAB during lunch for the next few weeks and all *Lovelines* will run in the February 8 issue of the CPJ.

CLASSIFIEDS

For Rent

BEACH HOUSE

Beach house available now until June 15th. 20 min. to school. Two separate floors with own entrance and kitchen. Bottom floor \$595. Top floor \$695. Whole house \$1200. Call 459-3021

COASTAL GUEST HOUSE

Beach lovers, whale watchers, seaside meditators, kite flyers, surfers, kayakers, poets, artists, et al. Your party, my house. Call for rates and reservations. 360-267-4900

Students Wanted

OUTDOOR LEADERSHIP POSITIONS

The Student Conservation Association is seeking outdoor leaders to manage 4 week summer conservation work crew programs in National Forests and Parks nationwide for high school volunteers. Proven youth leadership, backpacking experience, and Wilderness First Aid required, WFR preferred. Trail construction skills and environmental education exp desirable. Min age 21. Salary \$300-540 weekly DOE, travel, training provided. Contact SCA at 603-543-1700 or download application from www.scainc.org.

Funds

Clubs • Student Groups

Earn \$1,000-\$2,000 this semester with the easy Campus fundraiser.com three hour fundraising event. No sales required. Fundraising dates are filling quickly, so call today! Contact Campusfundraiser.com at (888) 923-3238, or visit www.campusfundraiser.com

Services/Lessons

NEW CLASSES FORMING FOR WOMEN!

Shaolin Eagle Aerobics I and II MWF 6:30-7:30 AND 7:45-8:45
Shaolin Eagle Self Defense MWF 5:30-6:30 Taught by Instructor Jessie Smith at TESC Leisure Education - CRC 316

Deadline for text and payment is 3 p.m. every Friday. Student Rate is just \$2.00 for 30 words. Contact Jen Blackford for more info. Phone (360) 867-6054 or stop by the CPJ, CAB 316.

CALENDAR

Thu, Feb. 1

11 A.M.
"Hey Mr. Postman"
Wash-PIRG hosts a letter-writing campaign to government people, "urging them to...[eliminate] Washington's worst cancer causing dioxins. They'll have a table in the CAB lobby. Call Jocelyne, 867-9081.

6:30PM
"Mother"
Fertility Awareness Class in LIB 1509. This class will address signs of fertility and birth control methods to use during those times. Call Judy Hickmann (446-3640), the instructor, to register. \$45 for singles or couples. Also on the 8th.

Fri, Feb 2

"Shiny Happy People"
Wash-Pirg has boxes for you to donate clothes and blankets all over the campus. Drop-offs go to hungry and homeless people.

9 P.M.
"Devil in Her Heart"
Hell's Belles play at the 4th Ave. Tavern, with guests The Ruby Doe, Stuck Ups and Razorblades. It's an "all AC/DC tribute." Fuckin sweet. \$6. Drinking age and over.

Sat, Feb 3

"Free bird"
The Black Hills Audubon Society has two different field trips goin' on today. One is the 10th annual Hood Canal birding trip (Andrew 360-426-6262), the other is South Sound Water Birding by BOAT (BHAS office: 352-7299).

Wed, Feb 7

1 P.M.
"This Monkey's Gone to Heaven"
Wash-PIRG will videotape your wish to stop oil drilling in the Arctic National Wildlife Refuge, and send it to Congressfolk Faser, Hunt, and Romero. Also happens on the 8th at 11 A.M.

1:30 P.M.
"High Hopes"
The Wilderness Center hosts a LEARN TO CLIMB workshop in the CRC. Pay \$5 in the main office. Have fun.

5 P.M.
"Streets of Philadelphia"
Mindscreen, P.H.A.T., and E.Q.A. present "Philadelphia," and several short films. The movies will be followed by an AIDS question/answer period. Free Free. Lecture Hall 1.

Thu, Feb 8

3:30 P.M.
"Last Dance"
Olympia's own "drummer danger duo" leads two West African Dance workshops. CRC 116. They ask you to bring "loose clothing and water." Hmm. Also happens the 15th at the same time.

6:30 P.M.
"House of the Rising Sun"
Ok. Here goes. "S+A part. Capoeira Angola. Meets Thurs. Lib 4300. C.J. Hanekamp (360) 866-4811.

7:30 P.M.
"Mother Nature's Son"
Freaks of Nature, the Wilderness Center, and Jonathan Duncan present a slide...presentation... Uh, "Exploring Mountain Landscapes and Cultures." Lecture Hall 1. \$5, or \$3 for college kids, like they're not privileged enough already.

Fri, Feb 9

NOON
"Come Together"
In the LIB lobby, ASIA hosts "Visitation" Art show and open mic. Open to all students and community members. Call x6412 for info. Contact Slightly West to sign up for Open Mic.



Wed, Feb. 14

"Don't Fear the Reaper"
As well as being VALENTINE's DAY, today is NATIONAL CONDOM DAY. "Love responsibly ... There are an estimated 15.3 million cases of STDs diagnosed

every year in the United States." Have fun ... if you dare.

Sat, Feb. 10

"Winter Wonderland"
The Wilderness Center is going on a snow-cave camping trip today and tomorrow. To go, you have to go to a MANDATORY MEETING, on the 6th at 5:30 in CRC 208!!! call x6553 for info.

10 A.M.
"Take me to the River"
U.S. Forest Service Class. Learn about the stewarding of the woods. Learn about endangered species, improve your tracking skills, and be possessed by the spirit of Davy Crockett. To sign up (transportation provided) call the Native Plant Salvage Project at 360-704-7785.

Thu, Feb. 15

"Vamos"
¿Te Quiera ir a Ecuador? Huh? Do ya Do ya wanna go to Ecuador with CIMAS (Spanish Language and Latin American Arts and Culture) Applications are due today! You can get 'em in LIB 1401. ¡Ahora!

Fri, Feb. 16

"Money for Nothing"
What's better than Federal Pell Grants? Scholarships! The Prid Foundation ("Living Together Building Community.") and GSB are giving away \$100,000 to selected applicants who are gay, lesbian, bisexual, transgender, all of the above and "of color." Students raised by lesbian or gay parents, and "potential leaders" in the sexual minority community also eligible.

Student Group Directory*

Feminist Majority Leadership Alliance

Description: We work towards the goal of having political, economic, and social equality for women.
Meeting times: 1 P.M. every Friday
More info: Whitney Bindreiff 888-2166 or x6636

MEChA

Description: The Chicano student movement of Aztlan strives to create a space where members can educate themselves, inform others, and confront issues.
Meeting times: 2 P.M. every Wednesday
More info: x6143

Common Bread

Description: We are a Christian Community working for justice and peace.
Meeting times: 5 P.M. every Monday in CAB 110
More info: Julie Boleyn 943-9144

*This list is not comprehensive. If you want your student group listed, drop off your information at the CPJ (CAB 316)

Evergreen Queer Alliance

Meeting times: 5 P.M. Tuesday (Gen. interest) in CAB 314; 5 P.M. Wednesday (Film Fest planning)
More info: 867-6544
evergreen_queer_alliance@hotmail.com

WashPIRG

Description: We run environmental, social, and consumer campaigns.
Meeting times: 4 P.M. Wednesday in Lecture Hall rotunda
More info: Rebecca x6058
evergreen_washpirg@hotmail.com

Slightly West Literary Magazine

Description: We publish TESC's Literary Mag.
Meeting times: 2 P.M. Monday, 9 P.M. Thursday
More info: Patricia Kinney, Jen Levinson x6480

Amnesty International

Description: International human rights org. working to free prisoners of conscience, ensure fair trials, and promote justice. Meeting times: 5 P.M. every Monday in CAB 310
More info: x6724

ASIA

Description: Asian Students in Alliance welcome everyone.
Meeting times: 1 P.M. every Wednesday in CAB 320
More info: Emiko Atherton, Miral Ghimire at 867-6033

Bike Shop

Description: We are a volunteer operated, do-it-yourself bike shop.
Meeting times: Call or stop by; schedule is on door
More info: Ari or Jayro at 867-6399

Medieval Society

Description: Students interested in recreating medieval martial arts, crafts, and performances.
Meeting times: 5:30 P.M. every Thursday in CAB 320
More info: medievallsociety@mail.com 866-6000 or x6036

Evergreen Dance Team

Meeting times: Wednesday, 2-4 P.M. in CRC 316 and Thursday 3:30-5 P.M. in CRC 116

Giant Robot Appreciation Society

Description: Evergreen's Anime Club!
Screenings Friday, 8 P.M. at the Edge
More info: Ken Koontz
squirelfox@hotmail.com

Women's Resource Center

Description: A resource center that provides meetings, a library, events and a drop-in center.
Meeting times: General meeting Monday, 3 P.M.; Zine meeting Monday, 5 P.M.; Evergreen Cliteracy Foundation Wednesday, 3 P.M.
More info: x6162

The Evergreen Swing Club

Description: We teach East Coast Swing and Lindy Hop basics. We welcome beginners and you don't need a partner!
Meeting times: Friday, 7 P.M. on the first floor of the library
More info: David, 866-8324; Kristina, 867-4939

Evergreen Investment Club

Meeting time: Thursday, 2:30 in CAB 315
More info: Andrew Bucher, Adam Smith-Kipnis, 786-9161



We're still making money
From the lumber company
Supporting the industry
Thriving off cutting down the tree
While we still got people
Living in the streets...

Welcome to Oly,
The All-America City
Hopes and Wishes go out to Richard