



# No Fat. No Profit.

Rental housing is big business for real estate companies, land developers and investment corporations. Monies collected from renters help to pay for head office expenses like utilities, salaries, telephones, expense accounts, stock dividends and investment maintenance. Whatever is leftover is profit. At Campus Housing, we charge just enough to cover expenses and rental upkeep. The rest pays for the needs of the renters including heating, water and electricity.

If you're on a limited budget or watch your hard-earned money, maybe Campus Housing is the right thing for you. Call 866-6132 or stop by the Housing Office to find out more about living on campus.

## Campus Housing. We're not in it for the money.

You have just read an award-winning Housing ad written and produced by graphic designer Dave Imanaka. It was selected out of approximately 1,160 entries from 143 offices throughout the country for an Award of Excellence from the University and College Designers 1977 Competition.

# The Cooper Point Journal

Vol. 6 No. 4

The Evergreen State College

Olympia, Washington 98505

October 27, 1977

## Are Varsity Sports In Evergreen's Future ?

by Karrie Jacobs

Evergreen: It's an Autumn day sometime in the foreseeable future. A student pauses at the foot of the clock tower to ask a friend the time. He doesn't even bother to look up at the faces on the concrete tower because he assumes that they are wrong. Some things never change. Let's listen to the conversation between two members of the class of 1987:

"Hey Charlie, y'know what time it is?"

"Yeah Fred, it's about four o'clock. What are you up to?"

"Four o'clock?"

"Yeah! I gotta get going, I'm late for football practice. We got a big game tomorrow up at Western."

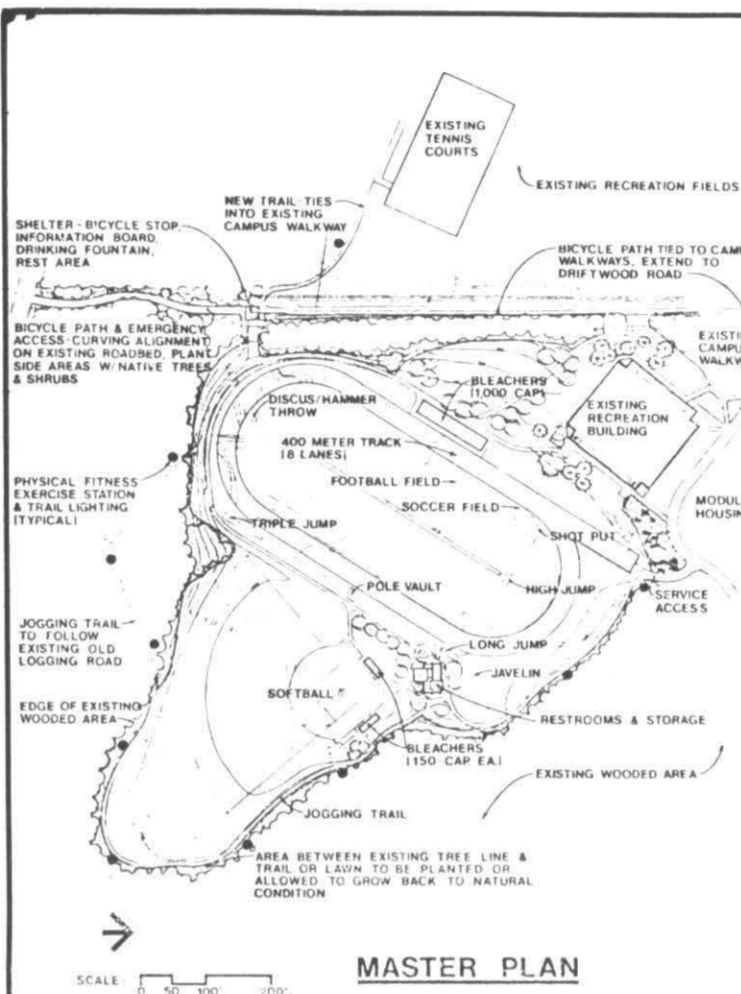
"Oh, yeah? Well, give 'em hell, Fred."

"Yeah. See you Charlie."

Football at Evergreen? "Impossible" you might say, but it's not. It is improbable, but not impossible. There has been a lot of talk lately about introducing intercollegiate sports to Evergreen. Oddly enough the idea of competitive teams has been introduced as the possible solution to a number of Evergreen's problems.

For example, in late summer President Evans presented a number of public relations goals, the first of which was to "create a better understanding and a sense of fierce loyalty in the Olympia/Thurston County community to Evergreen" to a task force consisting of faculty, staff, students and community members. At first the idea of competitive sports was tossed around jokingly, but then comments along those lines took on a more serious note. Soccer and tennis were mentioned in particular, and athletic teams were labeled by one task force member as the "easiest, fastest way to change some Evergreen images and encourage loyalty."

At a day long meeting held at the Tye Motor Inn on Tuesday, October 18, which was more or less a brainstorming session on the enrollment problem, the possibility of intercollegiate sports was brought up as a way to attract more students. At the Board of Trustees meeting on October



20 Trustee Robert Flowers proposed that a feasibility study be conducted on competitive team sports at Evergreen. No one was charged with conducting the study at the time of the meeting but Evans said "We'll do it."

### THE MASTER PLAN

There is more than just talk going on right now on the subject of athletics here. A master plan for a recreation field addition has been drawn up for the college by the ORB Organization. This annex to the existing field will include a football and soccer field, a 400 meter eight-lane track, a softball field, a jogging trail, and facilities for discus throwing, pole vaulting and long jumps. The new recreation field, which would be roughly the shape of Africa, would be located East of the unused section of Overhulse Road which runs along the edge of the current athletic field. The proposed field

will cost \$464,600 not including sales tax, and without the restrooms, storage building, bleachers and path lighting that was included in the ORB plan. The master plan for the 9.5 acre project was presented at the October 20 Trustee's meeting, and is currently getting prepared for submission in Evergreen's capital budget request to the legislature. Virtually the same request was made last year, though the current figures are a little steeper due to inflation, and was turned down by the legislature. It is hoped that the inclusion of a master plan in the request, something that did not exist last year, will help the request get through. Assuming that funding is granted for the project, the college will start accepting bids for the job from construction firms in the Summer of 1978, and actual work is scheduled to start in the second half of that year.

## COG III Approved

by Mandy McFarlan

Evergreen's COG III document was adopted by the Board of Trustees on October 20. The Board made some changes in COG III, none of which alter the document's intent. Administrative Vice President Dean Clabaugh raised the only objections to its passage. The most significant change made was the re-naming of the Geoboard to the Evergreen Council.

In COG III the Sounding Board is replaced by a more powerful group which is composed of fifteen students, five faculty, five classified staff, four exempt staff, and the President or an appointed presidential representative. This council will consider specific actions and issues which relate to the college, and will publicly give its opinions. Members of the Council can vote to comment on an issue, to cast a vote of confi-

dence or one of no confidence, refuse to consider an issue, or decide to cast a vote of censure against a person. Members of the Evergreen community can submit a written or verbal petition to request a place on the Council's agenda.

**ADVISORY ROLE**  
Because of the establishment of the Evergreen Council, and the voting power COG III gives to the Council, the new document was described at the Board of Trustees meeting as giving students here more power than students have at the other colleges and universities in Washington.

Assistant to the President Les Eldridge explained to the Board that the Disappearing Task Force which wrote the document wanted to give students a part in running the college without encumbering the administrative

process. He said, "This document moves students into an advisory role closer to that traditionally held by faculty."

Donna Hayes, a student who sits with the trustees, then asked "We censure, and then what? Does this really do anything?" The document specifies referral to the Council's decisions during administrative evaluations. Eldridge compared the Council to a legislator's constituents whose wishes aren't always carried out, but whose influence is strong. He felt that the Council's public disagreement could not be easily ignored by decision-makers. No one knows yet how much power the Council will have, if any. President Evans said that if the Council's actions are viewed as being thorough, its decisions will be of great import, but if the community views its actions as

frivolous or inconsistent, then it wouldn't be taken seriously. Faculty member George Dimitroff then said that if the decision-makers completely ignore the Council, it will never be taken seriously. Evans concluded, "It depends on mutual respect."

**SHADING**  
Clabaugh made it very clear that he was opposed to the document. "Generally, the community is favorably inclined toward the document... it's a bad document because throughout, the changes say that the institution won't be run with good responsible government." He explained that he fears that administrators will worry about how students will react to each issue instead of making decisions in an objective manner. He also said that the Evergreen Council, along with the other changes made by COG

III, could turn decision-making into a "popularity contest... It could be destructive."

**MOSTLY TALK**  
Steilberg pointed out that we have a competitive swimming pool designed by competitive coaches, as well as an excellent diving well for competition diving. Participation in invitational track meets, and the formation of a women's crew team are two other possibilities Steilberg brought up. "We couldn't do football for a long time," he said. "There would really be a revolt among students. Football is representative of high powered sports."

Another problem that would come with varsity sports is the great demand that a team would put on a given facility in practice time. A team would tend to monopolize an area, be it a swimming pool or a basketball court, at the expense of students who wanted to use those facilities for less formal play.

Also, the existence of a football field or an eight-lane rubberized asphalt track does not in itself make a team possible. There has to be money to pay league fees and coaches, or buy uniforms and equipment. Chances are that funds for such details would be requested from the Services and Activities funds, leaving the fate of our varsity teams in the hands of the S&A Board.

and ultimately in the hands of our sports-loving Trustees. Organized competitive sports at Evergreen is mostly talk right now, a way to draw more students (football scholarships perhaps), a way to make Olympia love us, but mostly talk.

When one Evergreen was asked how he felt about the possibility of Evergreen having a competitive football team (as long as it's just talk right now, we might as well take it to its limit) he responded, "Golly, I think that's great. When's the first practice?"

Another exclaimed, "Holy shit," choked on a swallow of English Breakfast tea, and said, "I don't think I'd go for it."

When one Evergreen was asked how he felt about the possibility of Evergreen having a competitive football team (as long as it's just talk right now, we might as well take it to its limit) he responded, "Golly, I think that's great. When's the first practice?"

Another exclaimed, "Holy shit," choked on a swallow of English Breakfast tea, and said, "I don't think I'd go for it."

Lee

# Letters Opinion Letters Opinion



# Opinion Letters Opi

ful, especially now that the rains are here.

Evergreen is not isolated from the dangers of the real world. Thursday night, October 13th, a car containing several College employees was struck at the "T" intersection of CN and C roads, east of the Mods. Witnesses report that the victim's car was struck with enough force to "send the car spinning like a top two or three times." The car that caused the damage, reportedly lost its brakes and went through the stop sign on CN road, colliding with the employees' car.

This letter isn't simply about the accident on the 13th. It's about the possibility, no, the probability, of a fatal accident on campus. It doesn't take much imagination to realize what could have happened if this accident

had happened to a student on a bike or to those children that line up for the school bus every morning around 8 a.m. by the Mods.

As for the accident Thursday, we can be thankful at least that no one was killed. We certainly sympathize with the injured custodial employee who was rushed to the hospital.

Along with being a good driver you can help Security by reporting any dangerous driving violations. We need the license number of the vehicle, and a good description of the driver for future identification. Call Security at X6140.

Please, use all possible care and be responsible when driving.

Thanks  
Ron McNeill  
Security

## A Punk Albino Squirrel

To the Editor:

Regarding: D. Arthur McArthur's article "THE FIRST PUNK JOURNALISM ARTICLE."

... so either you sit there like a woman and read what they've handed you or else you take it like a man and sit there and pretend to read it. ... Karrie, where are your eyes, are we gonna have a repeat of the albino squirrel column????? I certainly hope not ...

M. Fitzgerald

## Notes From An Imaginary Trustees' Meeting

by Karrie Jacobs

It's funny what people come up with when they're in a pinch. Here at Evergreen, for example, we have a few problems ...

For one thing our enrollment isn't what it ought to be and the state might ask us for some money back if things don't shape up. So what's wrong with us, why aren't we flooded with applicants? Could it be our academic programs, the way our students look, the difficulties that many people have tracking down their faculty members for signatures on green cards so that they can register? Could our recruitment tactics be ineffective, our catalog unattractive, our procedures inefficient, or our curriculum boring? Maybe Health Services isn't what it should be. Maybe counseling isn't so hot either. Maybe we need some competitive sports around here.

Sports? Did someone say sports? Say, when I was in college I used to play basketball and it was swell. I bet I'd even go to Evergreen today if they had a team. Let's do a study on the feasibility of sports on this campus. It would be an easy study to do, and fun besides. I don't want to spend time worrying about that curriculum stuff, or admissions procedures crap anyway. This is an easy answer. Look at it this way, if we have some good teams Olympia will like us, and maybe they'll even come out and root for us. We'll attract some nice kids here. Hell, why do you think anyone goes to the University. It's sports.

Molly Forsythe

## Real World Danger Right Here At Evergreen

To the Editor:

There have been numerous mishaps involving vehicles since the beginning of this academic year. These incidents have been minor but show a trend that should warn us to be more care-

support our brothers and sisters in prisons and jails all over the U.S. and Canada. All Native People are political prisoners whether they know it or not. They all deserve our support.

The U.S. thinks they can stop our movement by locking us in a cell but they're wrong. We will resist with our lives; the outright murders, the theft of our lands, the forced sterilizations. We will have justice rather than more lies, deceit, and broken treaties. We will continue to fight for complete sovereignty — nothing less than nationhood — and so long as the Mother Earth provides and the Great Spirit guides, there is not a power on earth that can stop us!

In the Spirit of Crazy Horse, Leonard Peltier

I found this letter in the Militant, and since they make no statements about reprinting articles I am sending it on. I wish many to be hit by its power. Do you remember the pictures of people permanently deformed from tiger cages in Vietnam? (Tiger cages are 3' by 4' by 4'. A person cannot lay down, or stand up in one. This prolonged sitting leads to deformity.) I do not like horror stories, but I must face reality. I do not have a "plan of action," but I am interested in your reactions and ideas for where to go from here.

Molly Forsythe

exert your influence, on Friday October 28 at 12:00 in CAB 110 David Gallagher

## The Last Word On The 'Ooops' Letter

To the Editor:

Contrary to popular belief, Valerie Solanas is not a pen member of the Evergreen community. The text of Ooops that purports to be a letter from her hand is actually a quote from her book, "The S.C.U.M. Manifesto (Society for Cutting Up Men — Ms. Solanas is also noted for her attempted assassination of Andy Warhol). Six years ago I encountered The S.C.U.M. Manifesto as a companion piece to B.I.T.C.H. by Caroline Hennessy (Ball-breakers Intent on Totally Castrating and Humiliating; I should add, however, that I have heard accusations that "Caroline Hennessy" is a male reporter's hoax). These works were my introduction to the wit and styles of Seventies feminism; and I recommend both authors to the Evergreen community for their vituperative mastery of invective and their mirror reversal of the tenets fundamental to patriarchal misogyny. Ms. Solanas and Hennessy deserve recognition as the bastard nieces (at least) of Jonathan Swift.

Right now I am aware of two proposals that will be submitted for consideration Friday — alike in many ways, they reflect these two basic differences regarding membership and advocacy: there may be more proposals which uncover other basic questions which must be raised and discussed at this meeting — if you have an idea for a proposal, you should have it drafted and dittoed off for presentation at the meeting it at all possible. It is likely that a decision will be reached on this matter Friday. That decision will be the concern of every student at this college. Come express your views, and

F

## CAB Questions

To the Editor:

We are pleased with the response to the suggestion board.

On Tuesday of this week we put up our second question on the board — "What things do you like about this building as it is?"

We want an opportunity to hear what students, faculty, staff and community think about this project and have scheduled a luncheon meeting in room 110 (between 12 and 2 p.m.) in CAB next week, Tuesday, November first.

We have also scheduled a drop-in work session for everyone interested to gather individual responses about the building. This will be held on Thursday, November third in the room across the hall from the cafeteria, from 11:30 a.m. on. (The non-smoking room will move to the coffeehouse for the afternoon.)

If you want to contact us, we meet in the Seminar building, room 3152, and the phone number is 866-6143.

CAB II Design Team

## A Letter From Leonard Peltier

To the Editor:

The following is a letter sent from Leonard Peltier to the American Indian Movement. Peltier is a member of AIM who was found guilty, on framed charges (like when the police plant marijuana on someone) of murdering two FBI agents during raids on the Pine Ridge Indian Reservation in 1975.

Greetings to all my brothers and sisters:

In late June, I was assigned a cell in the United States Penitentiary at Marion, Illinois. I've had a chance to look around for a month or so, and I would like to share some of my experiences with you.

They took my name and tried to replace it with a number: 89637-132. This is the govern-

ment's experimental behavior modification center for political prisoners. Their No. 1 Maxi-Kamp. The baddest one they've got. They keep about 500 captives here under the tightest security ever devised by the evil genius of man. No matter where you go, you are never out of the sight of your captors. TV cameras everywhere. Two-way microphones pick up almost every word you utter. A very weird thing to get used to. A Clockwork Orange. Complete control. I enjoy the company of Rafael Cancel Miranda, the Puerto Rican Nationalist, who has the distinction of being one of the longest-held political prisoners in contemporary American history. There are six Native American brothers here besides myself. One of them, Alfred Smith, is in the dreaded Control Unit.

The Control Unit has about seventy sealed-tomb tiger cages, many of them constructed with closed steel fronts so that they are virtually soundproof. These are sensory deprivation chambers, and they are used to cage human mammal organisms for very long periods of time. Brothers are sent to these cages from all over the federal system for experiments in brain tampering. Hiller Hayes has been on dead-lock in the Control Unit for five-and-a-half years.

The most sadistic thing about this type of solitary confinement is that you are in the cage twenty-three-and-a-half hours of every day. ALONE. Men go mad. Some commit suicide. Others only mutilate themselves.

The prisoners in the Control Unit have filed a lawsuit in federal court to see if the judge will think these terms of confinement are unconstitutional. A decision is due most any day now. We hope to see the court close that draconia forever and return our brothers to us.

Jails are not nice places to be, and we must remember that thousands of our people are in prison for resisting the genocidal policies of the U.S. We should

The Lunchbox Has Gone Pumpkins

.20¢ off on honey pumpkin pie OR pumpkin soup

offer valid Oct 27th thru 31st

Open Mon. thru Sat.

The Lunchbox natural food restaurant & deli  
Olympian Hotel Lobby • phone 943-9242

MANDARIN HOUSE

Open Mon - Fri 11:30 - 11:00  
Sat 4:00 - 12:00  
Sun 3:00 - 11:00

"The best Chinese food in Olympia"  
— Cooper Point Journal  
Gourmet Review  
Aug 29, 1977

VEGETARIAN DISHES  
ALCOHOLIC BEVERAGES  
LUNCHEON BUFFET  
111 NO. CAPITOL WAY 352-8855

Herd the Gnus?

NOW OPEN IN DOWNTOWN OLYMPIA, GNU DELI, ON THURSDAY @ CAPITOL.  
FEATURING A HERD OF LOCAL MUSICIANS ON FRIDAY & SATURDAY NIGHTS. AS WELL AS TULSA TURKEY ANY OLD TIME.

GNU deli

CYNICAL COMIX ... WILLIS

I'M ORGANIZING A NEW STUDENT COALITION! I WANT TO REVIVE THE SPIRIT OF THE SIXTIES!

I WANT PEOPLE TO GET INVOLVED! I WANT SOCIAL CHANGE!

BUT MOST OF ALL I WANT ...

... POWER!

NEED A NEW HAUNT?

call the experts  
HOMESEEEKERS  
357-3430

fee

MAGIC BARKS  
BAT WINGS  
LIZARD TAILS  
AND BEASTS  
AND A PINEY

213 e. 5th

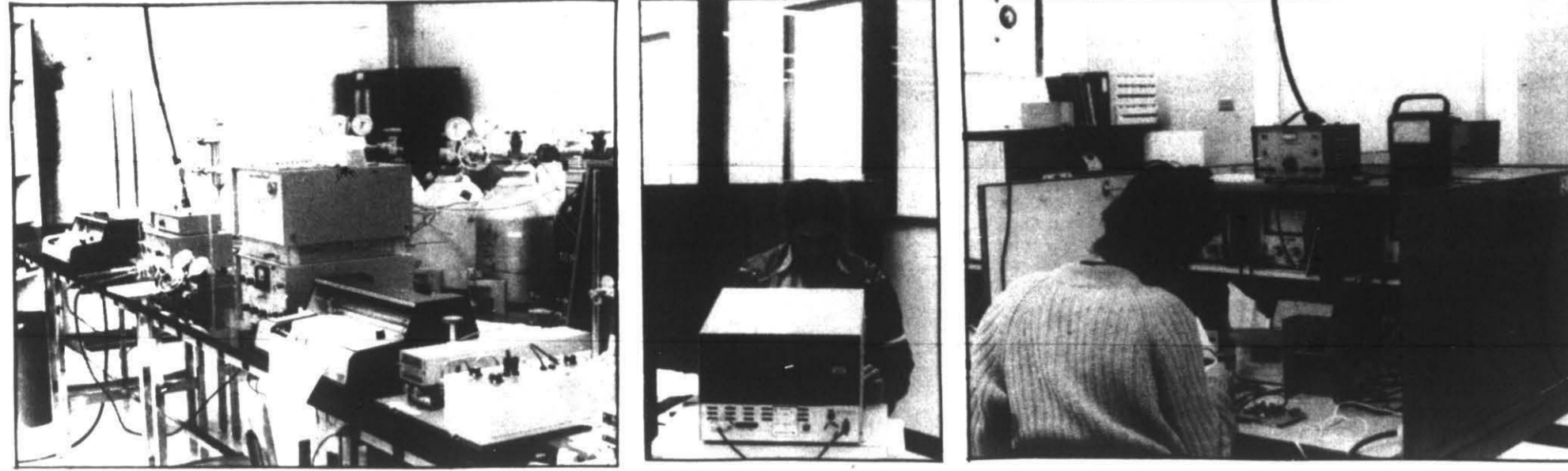
LAKWOOD DON'T MISS IT

7:00 & 9:00 nightly  
Sun. matinees  
2:00 & 4:00

Fantastic Animation Festival PG

5 tacomas lakewood center 588-3500

# I Found It....In The SPLU Lab



by John Seward

A SPLU is a self-contained instructional packet that deals with a single unit of subject matter. A SPLU Lab is what they have over on the first floor in Lab Buildings One and Two. That's where the school stores the SPLUs and that's where you study them, with the aid of a fantastic amount of gadgetry like computers and video screens. Most SPLU units can be completed in an afternoon or less, and some of them might be a lot of fun.

Until recently I had gone into the SPLU Lab exactly once. I can't remember what subject I was interested in, but all the gadgets and gizmos looked incredibly imposing. The person behind the desk wasn't sure if they had what I was looking for and waved me in the direction of what looked to be Frankenstein's Laboratory and told me to try

over there. I took one look, swallowed hard and vacated. I suspect this was just an isolated case — nobody took my hand and led me to what I wanted, but anyway I never went back.

Last week I took the assignment of doing the annual SPLU expose for this newspaper. I went down there and met Dave DeFeyter, one of the lab assistants. He was soldering a suspicious-looking mass of something-or-other that he called a mini-computer. He gave me a tour, showing me around horrendous amounts of scientific equipment: spectrophotometers, chromatographs, color and black and white darkroom equipment, and other stuff too numerous to itemize.

The idea is, to use any of those gadgets over there, you just find the right SPLU or SPLUs and you can learn how. In fact, a lot of the contraptions laying around

are, in effect, mechanical teachers — like the ones you heard about when you were a kid but never really believed you'd see, at least not in elementary school. You just plug in the right video cassette, or computer number and presto — didactic technology!

So there it is, everything from Anthro to Zoology, half of it in living color and all of it more or less free. A rough estimate of student use is that from 50 to 70 students a day come in to use the place. People in modules and programs are often asked to take a SPLU by teachers, students doing independent study may use the SPLUs, but undoubtedly a lot of students and people from the community are taking SPLUs simply for self-improvement.

When confronted with that awful mass of stuff, how do you find what you want? This year, all the problems of bewildered

students and overworked Lab Assistants have been overcome by "Find-It." Find-It is a computer, or at least a part of the HP2000-C, Evergreen's Mother computer. To ask Find-It something, I first had to ask Dave to wake it up. Find-It then announced a few unintelligible things via an odd-looking typewriter, and said (a bit prematurely) "FOUND." After that it gave a little blurb welcoming me to the program.

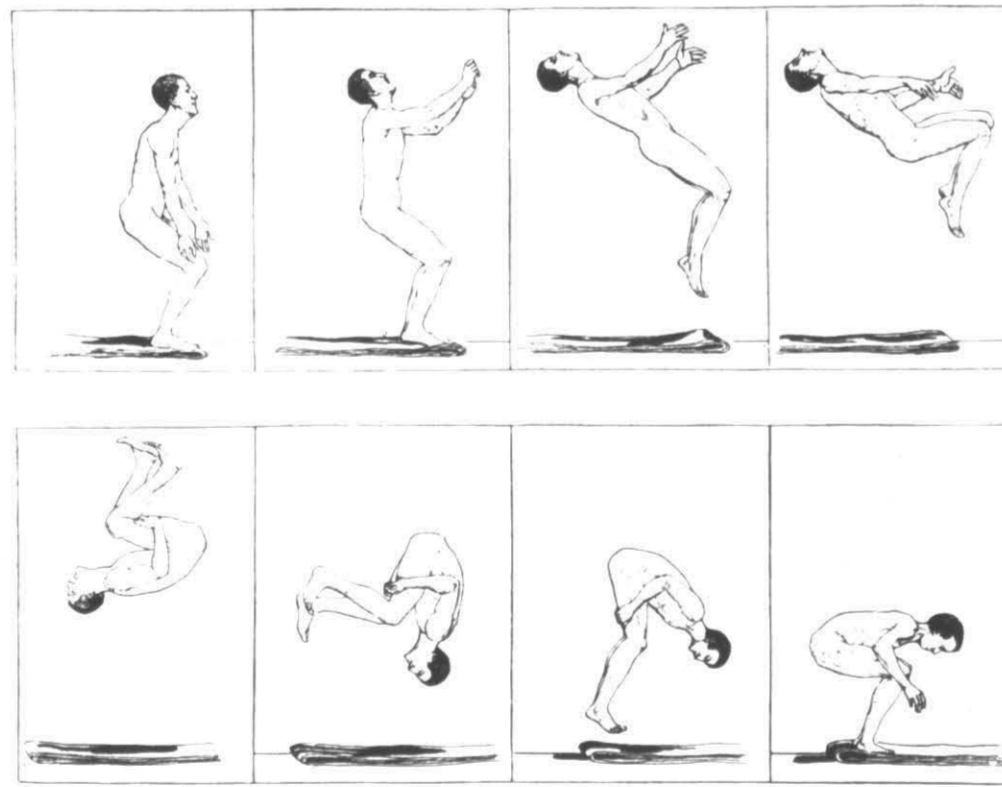
Although a welcome seemed a little inappropriate, I comforted myself with the thought that at least I wasn't unwelcome. It then informed me that there were 832 SPLUs currently listed — "Type END to stop, Type HELP for instructions," it clacked.

Then Find-It clacked out 20 categories and said "Select one discipline!" I obliged, typing "ANTHROPOLOGY HELP!"

"No more detailed information available. Select discipline!" it clacked. Oh well, I tried another: "HUMANITIES HELP! HELP!"

Find-It then rattled off 12 disciplines available, including two on Melville. "Select discipline!" I tried another of my all-time favorites — "SOCIAL SCIENCE HELP!"

I continued this process for some time until I was satisfied that they did indeed have quite a number of SPLUs on hand. What really interested me though was that machine, Find-It. I came home feeling quite proud of myself, having never operated a computer before. Now, I still haven't taken a SPLU, but one of these days I'm going to get past the computer catalog program, and then there'll be no stopping me...



jump for joy - live at ash



# NotesCampusNotesCamp

## Strike Policy Draft Available Soon

The Strike Policy Advisory Group, appointed by the Board of Trustees and President Evans to examine the recently-adopted Strike Policy (Board Resolution 77-3), and to recommend alternatives, will bring a discussion draft to a forum on November 7, at 12:00 noon, in Lecture Hall three. Copies will be mailed to faculty and staff late next week and should also be available Wednesday, November 2 at the Information Center.

The Draft Document summarizes the history of higher education collective bargaining and strikes, reviews applicable or potential law, Evergreen's unioniza-

tion status and history, and the actions by the Governor's Office and Evergreen in the face of the 1975 and '77 strikes, the special nature of sympathy strikes, outlines various policy of approaches and discusses strike resolution and aversion methods.

The Strike Policy Advisory Group encourages members of the Evergreen community to read its discussion draft and to comment on it by Wednesday, November 9 in order that the group may present its final draft to President Evans in time for him to bring them before the Board of Trustees December 8. Send comments to Les Eldridge — L 3114.

## CPE Rep On Campus

Patrick Callan, the Executive Coordinator of the Council for Postsecondary Education spoke at the Board of Trustees meeting on October 20 and later spoke with interested students, staff and faculty members about the study on Evergreen which the C.P.E. will conduct. He also discussed the Council, the Washington Legislature, and education in general.

The study that was discussed was one charged to the Council by the legislature in the 1977-79 budget and reads as follows: "Not more than \$25,000 shall be expended to study and make recommendations on the curriculum and costs of The Evergreen State College. The study shall determine the actions necessary to broaden the institution's (Evergreen's) clientele base by introducing traditional undergraduate and graduate course offerings and reduce the institution's total operating costs per FTE student to the average cost per FTE student at the other three state colleges."

Callan attended the Trustees' meeting to give some background on what the Council is and to assure Board members that the study's outcome is not predetermined, and that the C.P.E. will carry out an objective study.

The Council has not yet finished the research or design of the study which they have a year and a half to complete. Callan says that the study can be valuable to both the state and the college.

## National Search For Dean Candidates Underway

TESC Vice President and Provost Edward Kormondy is currently conducting a national search for candidates to compete for the position of Academic Dean, which will be vacated with the expiration of Dean Willie Parson's term during the summer of 1978.

In a memo addressed to members of the Evergreen community, Kormondy has outlined the interests to be considered in filling the post and detailed the procedures by which the selection process will be carried out.

According to the memo, there has recently been a "... legitimatedly based and strongly expressed concern that at least one woman be represented on the dean's team." In addition to this consideration, Kormondy states his belief that "the demands of the deanship, and particularly of the two senior positions, in turn demand the strongest possible people." He is conducting the national search so that Evergreen will be assured of "a strong group of women and Third World candidates in the (applicant) pool."

The active recruitment of candidates, however, does not preclude consideration of applicants already associated with Evergreen. As stated in the memo, "their (internal candidates') applications are encouraged."

Recruitment of applicants outside of Evergreen is encouraged. Recruitment of applicants outside of Evergreen is encouraged.

## Pub Board To Meet

The Evergreen Publications Board is having their first meeting of the academic year on October 31 at 8:30 a.m. The Pub Board is the "publisher" and official policy governing board of the COOPER POINT JOURNAL. All persons wishing to comment on the JOURNAL to the Board are encouraged to attend the upcoming meeting.

**The Cooper Point Journal**

**EDITOR**  
Karrie Jacobs

**MANAGING EDITOR**  
Mandy McFarlan

**FEATURES EDITOR**  
John Keogh

**BUSINESS MANAGER**  
Nathaniel Koch

**PRODUCTION MANAGER**  
Dana Leigh Squires

**SECRETARY**  
Lee Pugh

**ADVERTISING MANAGER**  
Robert Sawatski

The COOPER POINT JOURNAL is published weekly for the students, faculty, and staff of The Evergreen State College, Olympia, Washington 98505. Views expressed are not necessarily those of The Evergreen State College. Advertising material presented herein does not necessarily imply endorsement by this newspaper. Offices are located in the College Activities Building (CAB) 308. News phone: 866-8213. Advertising and business phone: 866-8080. Letters policy: All letters to the editor must be received by noon Tuesday for that week's publication. Letters must be typed, double-spaced, and 400 words or less. Letters exceeding 400 words may be edited for length. Names will be withheld on request.

**RADIANCE**

**HERBS**

**THERAPEUTIC MASSAGE**

LOCATED IN THE COLLEGE ACTIVITIES BUILDING (CAB) 308

866-8213

SECOND HAND GIFTS  
ONE MARS TRASH IS AROTHERS....  
106 1/2 E 4th  
122nd THUR FRI 11AM  
CJ ME COOK 943-3825

Stained Glass Supplies Lessons Gifts Phone (206)357-5065

**COLONY GLASS WORKS**

2101 W. Harrison St., Olympia, Wa. 98502

1983-1984  
308-308-01  
0880  
Luredo

INTERESTED IN EMPLOYMENT WITH THE GOVERNMENT?  
CURIOUS ABOUT GRADUATE PROGRAM IN PUBLIC AFFAIRS?  
CONCERNED ABOUT MANAGEMENT AND THE PUBLIC INTEREST?

Sign up TODAY for Govt. Job & Grad School Information Day  
Wed. Nov. 2 — 9:00 a.m. to 3:30 p.m. in Lib. 3112

Interviews will be assigned on a first come, first served basis. Call Career Planning & Placement (Lib. 1214), 866-6193

The format will consist of morning workshops on the job market, job search, resumes, applications & interviews. Afternoon workshop on grad school information followed by INDIVIDUAL INTERVIEWS with: Soc. Sec. Administration, Wash. State Human Rights Council, Seattle City Council, and many others — gov. and university groups with names too long to print here.

**JOB & GRAD. SCHOOL PREPARATION WORKSHOP**  
Mon. Oct. 31 in Lib. 1213 at 4:00 p.m.  
ALL STUDENTS WELCOME

**★ GRAND OPENING ★  
NEW LOCATION!**  
Sale Prices Good Thru Sat., Nov. 3

**RADIANCE Nutri-Mega**

	Reg.	Sale	With Coupon
60's	\$7.50	\$6.49	\$5.99
120's	\$13.50	\$11.49	\$10.99

Cash value 1.20 Good thru 11/5/77

**NATURE PROTEIN**  
1 lb. Reg. COUPON PRICE \$5.49  
6.50

Cash value 1.20 Good thru 11/5/77

**Unprocessed MILLER'S BRAN**  
Reg. 39 lb. NOW 29¢  
LIMIT 2 lbs.  
Cash value 1.20 Good thru 11/5/77

**RED APPLE BRAND VITAMIN C-500**  
With ROSEHIPS

**250's \$7.99 • BONUS — 100 EXTRA**

(Reg. 3 1/2") ONLY ONE PENNY MORE With Purchase of 250's size!

Cash value 1.20 Good thru 11/5/77

**RAW HIKER'S MIX**  
1 lb. Reg. COUPON SPECIAL \$1.89  
\$2.29

Expires 11/5/77

**High Potency BREWER'S YEAST POWDER**  
1 lb. Reg. 3 lb. LIMIT \$1.79  
\$2.20

Expires 11/5/77

**ACME JUICERATOR**

All Models **10% OFF**

FREE JUICE SAMPLES & DEMONSTRATION  
**FRIDAY, NOV. 4th • 12:30-4:30 P.M.**  
Buy Now For Christmas Gifts!

• Many More In-Store Specials •

**RED APPLE NATURAL FOODS**  
236 N. Division St.  
(Next to Western Auto)

**OLYMPIA, WASH. 98502**

**357-8779 • Bank Cards Welcome**  
Mail Orders Given Prompt Attention!

