



WHO CAN TELL US WHAT IS WRONG WITH THIS PICTURE? ♦ NEW TO THE AREA? FIND OUT WHATS AROUND TOWN, PAGE 10-11

COOPER POINT JOURNAL

Issue 1
Volume 35
Sept. 15, 2006



EVERGREEN

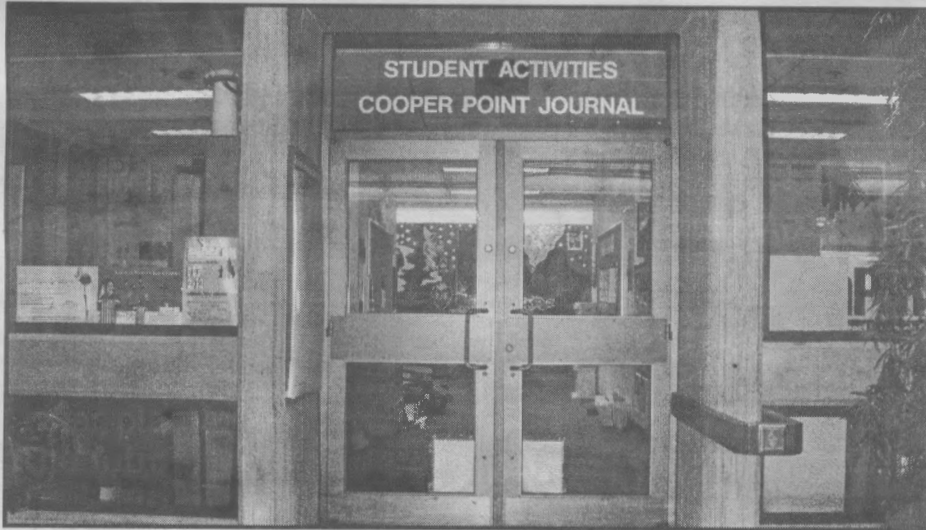
TESC
Olympia, WA 98505

Address Service Requested



PRSR STD
US Postage
Paid
Olympia WA
Permit #65

Making use of your student activities fee



Student activities can be found on the third floor of the CAB. Photo by Eva Wong

By Sam Jessup

Evergreen students pay approximately \$158 dollars per quarter towards what is called the services and activities fee. What happens to that money?

Last year the Board of Trustees (Evergreen's all-powerful governing institution) approved the allocation of \$4,858,164 in student fee money towards the Services and Activities (S&A) budget.

That money supports Evergreen's radio station (KAOS 89.3FM), the Campus Children's Center, the Cooper Point Journal, the Tacoma program, the Reservation-Based program, and numerous student groups.

According to the law, all Washington colleges and universities are required to have something like Evergreen's S&A board to handle the distribution of the student activities fees.

Most institutions have S&A boards composed of faculty, staff and students. Evergreen is unique in that the S&A board here is composed entirely of students—students have almost complete control over S&A funds, though their final allocations must be approved by the Board of Trustees.

Incidentally, there are currently seats available on the S&A board. Applications are being accepted until the end of week two. Ask at the front desk of student activities (in CAB 310) for more information.

The S&A board convenes in the spring

to distribute money to student groups for the following year. Last spring, \$321,094 was split among 46 student groups. This means that most available money will already be spoken for when fall quarter rolls around. But students who want to start a new club or who need money for an event (e.g. a political rally, concert, conference) should not be discouraged.

Last year the S&A board set \$100,000 dollars aside for "special initiatives." New groups can get support from the special initiatives fund and existing groups can get extra funds for extra events.

The special initiatives fund is available through what people that hang around CAB 310 call the "special initiatives process." It is a straightforward process—ask for an application form at the front desk of student activities and meet with the S&A board to explain why the money is necessary.

The special initiatives process will begin in the last week of October.

The services and activities fee is not optional, but students also pay an optional eight dollars a quarter to Washington Public Interest Research Group (WashPIRG), a non-profit that has an active Evergreen chapter. Students pay the fee by default. Those interested in opting out of the fee must do so in writing at the student accounts office.

Sam Jessup is a senior enrolled in an independent contract. He is the editor-in-chief of the Cooper Point Journal.

VOX pop

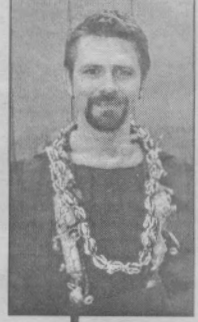
What do you wish you knew before you came to Evergreen?

By Aaron Bietz and Charlie Daugherty

"Everything your relatives say about Evergreen is wrong."
Nathan Bowling
Masters in Teaching



"Do the research and know the professor's background ahead of time and have a clear plan for the future."
Frank Casey
Masters in Teaching



"Live on campus; it will be fun, but will also suck. And don't study art; it's frustrating."
Chris Nelson
BA



"Get a jump drive. That way you can be mobile with all the work you'll have to do."
Hope Teague
Masters in Teaching



"Don't narrow down into one field. Evergreen counts all your credits so you can get a diverse education."
Josh Davies
BA



"When you reflect back on the four years that you've been here you realize how much you've grown and changed."
Bea Daily
BA



"College isn't about classes, it's about learning how to learn and how to take care of yourself."
Sarah Perry-Mark
BA

Staff

Thanks to all who helped produce the orientation issue

- Aaron Bietz
- Charlie Daugherty
- Lisa Hubert
- Carrie Ramsdell
- Curtis Randolph
- Erin Rashbaum
- Emily Uligh
- Wendy McCutchen
- Christina Weeks

Cover Photo by: Aaron Bietz

Business

Business manager.....Lindsay Adams
Assistant business manager.....Cerise Palmanteer

News

Editor-in-chief.....Samuel Lee Jessup
Managing editor.....Sean Paul

Advisor.....Dianne Conrad

Cooper Point Journal

Your work in print

is written, edited and distributed by students enrolled at The Evergreen State College, who are solely responsible for its production and content.

is published 28 Thursdays each academic year, when class is in session: the first through the 10th Thursday of Fall Quarter and the second through the 10th Thursday of Winter and Spring Quarters.

is distributed free at various sites on The Evergreen State College campus. Free distribution is limited to one copy per edition per person. Persons in need of more than one copy should contact the CPJ business manager in CAB 316 or at 867-6054 to arrange for multiple copies. The business manager may charge 75 cents for each copy after the first.

sells display and classified advertising space. Information about advertising rates, terms and conditions are available in CAB 316, or by request at (360) 867-6054.

How to Contribute

Contributions from any TESC student are welcome. Copies of submission and publication criteria for non-advertising content are available in CAB 316, or by request at 867-6213. Contributions are accepted at CAB 316, or by email at cpj@evergreen.edu. The CPJ editor-in-chief has final say on the acceptance or rejection of all non-advertising content.

How to Contact the CPJ

Cooper Point Journal
CAB 316
News: (360) 867 - 6213
Email: cpj@evergreen.edu
Business: (360) 867 - 6054
Email: cpjbiz@evergreen.edu



The CPJ is printed on recycled newsprint using soy ink.

Meetings

Our meetings are open to the Evergreen community. Please come and discuss with us!

Paper Critique 4 p.m. Monday
Comment on that week's paper. Air comments, concerns, questions, etc. If something in the CPJ bothers you, this is the meeting for you!

Student Group Meeting 5 p.m. Monday
Find out what it means to be a member of the student group CPJ. Practice consensus-based decision making.

Content Meeting 5:30 p.m. Monday
Help discuss future content, story ideas, Vox Populi questions and possible long term reporting projects.

Thursday Forum 4 p.m. Thursday
Discuss ethics, journalism law and conflict resolution.

All meetings are in CAB 316.

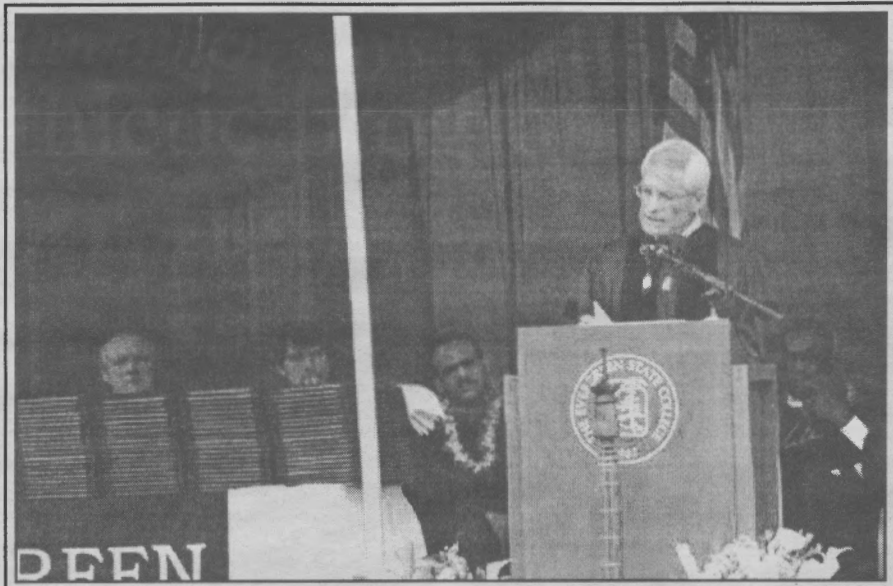


Photo by Aaron Bietz

Faculty member Jose Gomez addresses the graduating class of 2006. He inspired students and implored them to empower themselves and others with education.

WashPIRG Here to help

By David Hornbeck

Freshmen! Welcome to Evergreen! I hope you're enjoying Orientation. It's one of those times when you can enjoy all the benefits of Evergreen without any of those pesky classes. Anyway, I'm sure I've met a few of you by now. My name is David Hornbeck and I'm the board chair at the student-run group, WashPIRG.

What is WashPIRG, you ask? Well, that's a good question, my friend. The Washington Public Interest Research Group is a mostly student-run, nonpartisan, nonprofit group. They fight for the public interest in campaigns that students create and run themselves, thereby initiating social change. That, in and of itself, is fantastic and all, but there are a couple of aspects which really set us apart. Unlike other groups on campus, we have a trained professional staff person whose job is to help students with activism. The other big thing that sets us apart is that we're plugged in to a larger movement. There are active student PIRG chapters all over the country and we're a part of it.

So that's all well and good, but what have we actually gotten done? That, my fellow Greener, is another awesome question. We have had some massive successes over the past couple of years. I'll just go through a few of my favorites. The year before last, we converted all of Evergreen and Western Washington's energy to green tags (for those of you

who are confused, green tags mean that for every kilowatt/hour of energy used by TESC/WWU, somewhere in the United States the same amount is being used, but with renewable resources instead of something horrible like coal). Last year, we sent seventeen students and one faculty member to New Orleans to help with reconstruction efforts in a community which otherwise would have been completely privatized. Also last year, we collected almost 300 signatures for a Washington voter initiative which will, if passed, get more renewable energy inside of Washington. We were actually in the top ten petition signature gatherers and we were only doing Evergreen!

So this year is very exciting, as well. Of course there are the midterms. You'll see us all over the place registering students to vote. Also, we're still pushing that voter initiative. We're still going to be helping New Orleans, and, like always, helping out with hunger and homelessness in Olympia. We're still working to reduce the populace's impact on the planet and increasing Evergreen's commitment to sustainability. So if you want to change the world and if you're interested in helping out, don't hesitate to email me at dahornbeck@gmail.com or see if anyone's in the office on the third floor of CAB. See you around.

David Hornbeck is a junior enrolled in Looking Back: America in the Twentieth Century. He is the Board Chair of WashPIRG.

POLICE

THE EVERGREEN STATE COLLEGE

These blotter reports are from Spring of last year. New blotter reports will resume as soon as possible.

Case Number 06-11 33
06-07-06 at 1300 hours
A \$1,500 dollar video data projector was stolen from campus. Some returning Evergreeners may mistake this theft for the stolen projector the CPJ reported last spring but, to clarify, this is a second projector that was stolen within a couple months of the first. The Evergreen community suffers from such theft, but you must admit, someone out there has a sweet fucking entertainment system set up. An entire wall to play Mario kart on!

Case Number 06-116 7
06-13-06 at 0310 hours
Dispatch was notified of a burglary in the dorms. Someone had broken in and left the area in a state of dishevel. Specifics include taking the resident's clothing and placing them in the sink and bathtub, as well as taking the resident's food out of the refrigerator and placing it in the sink and bathtub. The resulting casserole was not tasty. Apparently the burglars were able to get in because one of the windows was left open. Remember to close your windows and install the locking device that Housing provides with each window. That locking device, of course, being a wooden stick.

Case Number 06-11 48
06-10-06 at 1615 hours
One of the transients who turn up in the buildings around

campus turned out to have a third-degree misdemeanor warrant out for him. He was allegedly only there to attend a music concert several hours later, but he was also homeless and carrying duffle bags.

Case Number 06-1156
06-10-06 at 1657 hours
Someone threw an apple at one of the dorm windows and shattered it.

Case Number 06-11 43
06-09-06 at 1200 hours
One of the transients who turn up in the buildings around campus turned out to have a fourth degree VD assault warrant out for her. She was found on the floor of a bathroom in the LAB II building. She claimed she did not have any more medication to take.

Case Number 06-11 47
06-10-06 at 0124 hours
A minor, holding a half-consumed can of Miller Highlife, walked up to a police officer and started giving him sass. He was arrested.

Compiled by Curtis Randolph.

Furniture Works
New, gently used,
and consignment

402 Washington St.
Olympia, WA
olyfurnitureworks.com
360-570-0165

Affordable Home Comforts

Traditions

Café & World Folk Art

Fair Trade &
Sweatshopfree Goods
Concerts Theater, Poetry,
Meetings, Forums,
...Tasty Organic Food!

Sneakers from "CUC", worker-run
factories in Buenos Aires, Argentina

300 5th Ave. SW, 705-2819
www.traditionsfairtrade.com

"a splash away from Capitol Lake and the Fountain"

THINK GLOBALLY SHOP LOCALLY

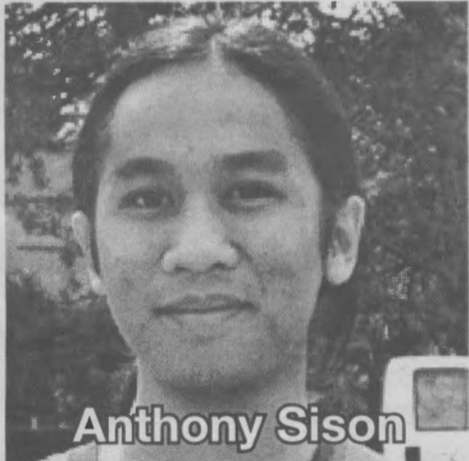
OPAS Welcomes Evergreen students
with a **15% discount** on all items
not already on sale!
Many items 10-50% discounted everyday!
C'mon in and check it out.

www.olympiaartandframe.com
There is a lot more to us than meets the eye.

OLYMPIA
ART & FRAME
OPAS INC.

1822 Harrison Ave. NW, Olympia, WA 98502 360-943-5332

Meet your Evergreen student government



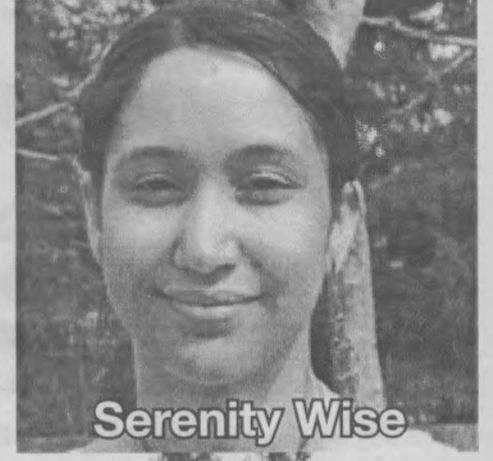
Anthony Sison



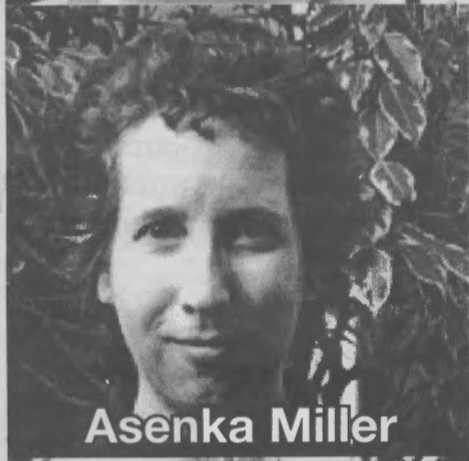
Kenyon Foxworthy



Rebekah Thornburg



Serenity Wise



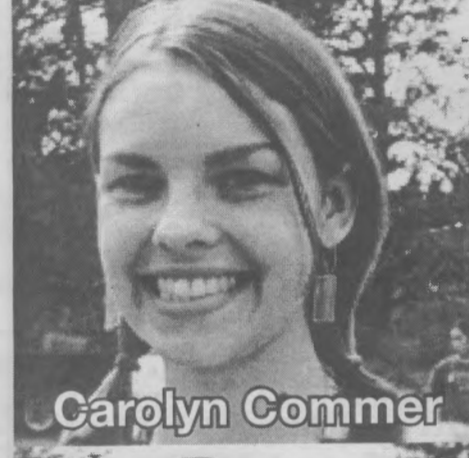
Asenka Miller



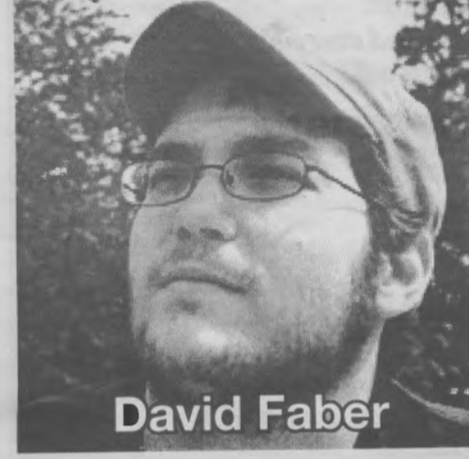
Ben Hart



Brooke McLane



Carolyn Commer



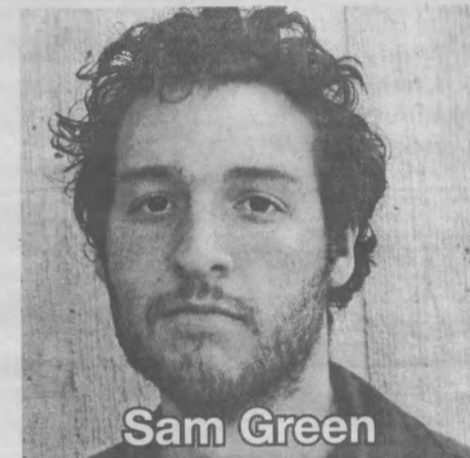
David Faber



Kylan Clayton



Matt Kreiling



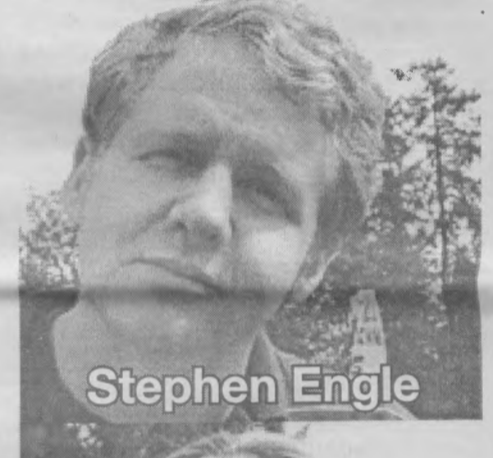
Sam Green



Sarah Bland



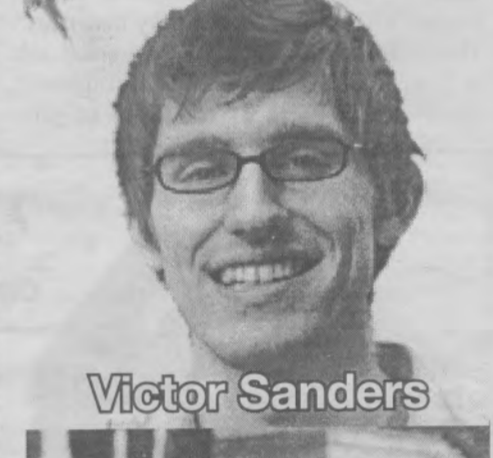
Spencer McQueen



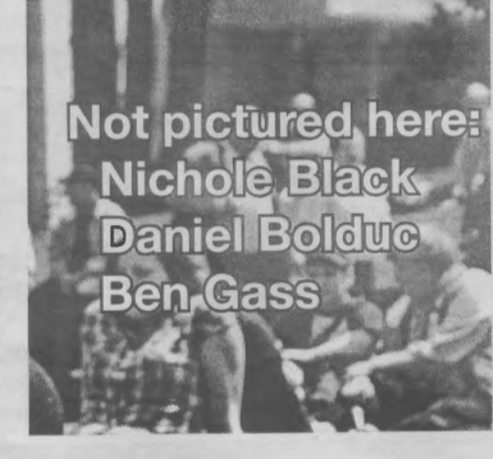
Stephen Engle



Terra Evans



Victor Sanders



Not pictured here:
Nichole Black
Daniel Bolduc
Ben Gass

By Carolyn Commer and Brooke McLane-Higginson

This year is important, the most monumental year since Evergreen began, because now students have a unified voice, a collective power to change college policy, advocate student rights, and lobby in legislature: we have the Geoduck Union.

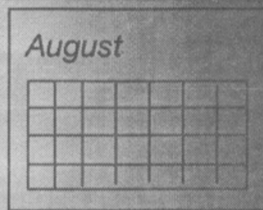
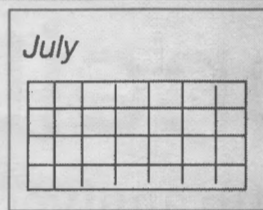
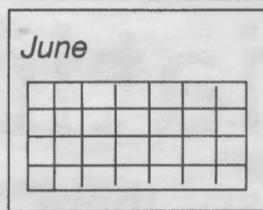
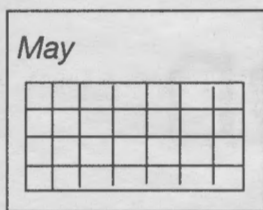
To secure our collective power, Evergreen students voted last winter to enact the Geoduck Union Constitution, finally giving Evergreen a state-recognized student government. In spring, we elected twenty students to serve one-year terms as Geoduck Union Representatives. But these representatives are not the entirety of our student government; every student enrolled at Evergreen is a member of the Geoduck Union. Because we now have student government, students have a public forum to address campus issues, listen to student concerns, and plan together for action. The Geoduck Union will function as a powerful communication hub, a place to give and get information and an invaluable resource for students at Evergreen.

But this year we can change more than our own campus. With a state-recognized student government, we students can lobby in legislature for reform in higher education. For the first

time, we can join the Washington Student Lobby, an association of Washington student governments, whose labor in the legislature needs and deserves Evergreen's support. In these times when federal government cuts funding for education like corn in Kansas, we must protect our right to be educated—our right to be educated well.

All enrolled students are responsible for the Geoduck Union, so get involved—attend weekly Geoduck Union meetings (times and places TBA in the CPJ) or contact your representatives. Who are they? Nichole Black, Sarah Jane Bland, Daniel Bolduc, Kylan Clayton, Carolyn Commer, Stephen Engel, Terra Evans, David Faber, Kenyon Foxworthy, Ben Gass, Sam Green, Ben Hart, Matt Kreiling, Brooke McLane-Higginson, Spencer McQueen, Asenka Miller, Victor Sanders, Anthony Sison, Rebecca Thornberg, and Serenity Wise. All representatives can be reached at weekly meetings, or through email at geoduckunion@gmail.com.

Carolyn Commer and Brooke McLane-Higginson are both members of the Geoduck Union.



The Red Zone:

By Timia Olsen and Chandra Lindeman

Overall, Evergreen is a wonderful and safe community, but we are not a utopia. Yet there are myths which contribute to the idea of Evergreen being a utopia or an island protected from the injustices which the rest of society faces daily. Some of these myths are "Nothing bad happens here," "Everyone is treated equally at that place" and "Evergreen is a completely safe community." These myths contribute to an environment where students feel protected and believe that harmful events do not happen. So then, what exactly is the "Red Zone"?

The "Red Zone" occurs throughout Fall Quarter on college campuses across the country. It is a time when we see an increase in risky or harmful behaviors, including excessive alcohol consumption and drug use. The "Red Zone" is also a time when the most sexual assaults occur. Some common forms of sexual assault on college campuses, inclusive of Evergreen, are acquaintance rape, date rape and harassment. Other forms of sexual violence include child sexual abuse, exposure to pornography, groping and unwanted sexual activity (which can include inappropriate touch or forced kissing). So, why Fall Quarter?

Fall Quarter is a time when new students arrive. For many, it is their first time away from home, their community and the daily experience they have come to know. With this comes a new sense of freedom. This is an invigorating time, yet it can also be a time of loss and great transition. It is a challenging time, as students are faced with tough decisions to make on their own. New students want to make new friends and to develop a sense of community, in order to belong. For some, the desire to feel accepted during such a time of transition can overshadow their awareness of personal safety. For many freshmen, this may be the first time they have access to alcohol or other drugs, as the "Red Zone" is a time when college campuses see an increase of these substances.

All of these factors can leave a person more vulnerable to making unhealthy choices as well as more vulnerable to the harmful decisions and actions of other students and community members at large. While the majority of college students will experience consensual and safe relationships during their college career – some of which will last a life time – it is also true that one in five females will experience a completed or attempted sexual assault during her college experience. Statistics for males and gender variant individuals are unknown at this time.

So what can we do to increase our safety? First, it is important to raise our awareness regarding the context in which sexual violence most often occurs on college campuses.

As previously stated, acquaintance or date rape are most common (between 80 and 85%). Next, 90% of acquaintance sexual assaults involve the use of alcohol. The consumption of alcohol is not what causes the assault, but it lowers a person's ability to make safe decisions. Alcohol is the "date rape" drug most commonly used by people who base their sexual interactions on having power over a person rather than on having that person's consent (for info on other "date rape" drugs such as Rohypnol contact OSAP). Finally, most people (over 95% on college campuses) who live through sexual assault do not report the incident or get help. The following are common examples as to why people don't reach out: they believe it was their fault; fear being blamed; have safety concerns; or most commonly, they think it wasn't sexual assault.

Just having this information can contribute to increasing your safety. It leads to suggestions such as:

•**Intuition.** If you have an uneasy feeling about a person or situation, act on it by leaving or asking for help. Even if it means "being rude."

•**Be aware.** Know your surroundings and companions.

•**Escorts.** Campus Police are available 24 hours a day. Or walk with friends or in a group.

•**The safety of others.** Until you get to know a new person, invite them to spend time with you in a group setting or with your friends.

•**Be assertive.** Know your sexual limits and communicate them directly and clearly.

•**"Date Rape Drugs."** If you are drinking with others, make your own drink and keep it with you. If you or someone you know is concerned about having ingested a "Date Rape Drug", including too much alcohol, call 911. These drugs can be lethal. Emergency providers will concern themselves with your safety rather than your age and use of substances.

•**Alcohol is the number one "Date Rape Drug"** so if you use it, be aware of your limits and stay in safe environments or with people you trust. Excessive use can inhibit communication and the ability to reason.

•**Learn self-defense.** Empower yourself, gain confidence and learn powerful safety techniques. Classes are offered throughout the academic year.

These, and many more, are great ways to increase our safety. It is also important to state that if you or someone you know has

lived through sexual violence it is NEVER the fault of the survivor. Regardless of what choices a person makes, it is not okay for one person to act against another person's will. In fact, it is illegal. This leads us to understanding how to PREVENT sexual violence (different from increasing personal safety).

Most important to preventing sexual violence is for people to not sexually violate others. Engage in consensual interactions – ASK before initiating any sexual contact with another person. If the other person says "No", then stop. If they are unsure, then stop. If the person appears upset, then stop. And if the person says nothing, stop. Silence is not consent. Lastly, if a person is under the influence of alcohol or other drugs, and there is any question as to whether or not the person can consent to engaging sexually, wait until they are sober and then talk about it. Engaging sexually with a person when they do not/cannot clearly consent (and saying "yes" to one sexual act does not mean "yes" to everything, so ASK) may be defined as sexual assault. It is illegal to coerce, force, threaten or to use substances when engaging or attempting to engage in sexual activity. The Evergreen State College does not tolerate sexual misconduct (please re-read the student conduct code). Students who engage in sexual misconduct will face disciplinary action. If you have or are thinking about engaging with someone sexually without their consent, help is available. Contact Evergreen's Counseling Center at 867-6800 or the Crisis Clinic and Referral 24 hour phone line at 586-2800 to get the support you need.

There are many other ways to contribute to ending sexual violence, such as challenging gender stereotypes and understanding the connection between oppression and violence. OSAP works to understand and change conditions that cause sexual violence through workshops, films and presentations. Volunteer, internship and paid student coordinator positions are available. Training is provided. Everyone in our office is encouraged to use their creativity and passion to mobilize the Evergreen community toward manifesting a safe and healthy learning environment.

If you or someone you know who has lived through sexual violence, you are not alone. Free and confidential services are available through Evergreen's Office of Sexual Assault Prevention (OSAP) in SEM I 4121. Call 867-5221 for services including: advocacy-based counseling, assistance with medical, legal, and educational needs and referrals to on- and off-campus resources. After office hours or to report an assault, call Police Services at 867-6832 and request a Sexual Assault Advocate. You can also contact Evergreen's Counseling Center at 867-6800. An excellent off-campus resource is Safeplace 754-6300, whose phones are answered 24 hours a day by trained advocates. Most importantly, if you have lived through sexual violence, it was not your fault and you are not alone. Support is available.

Because we are only able to share brief information in this article, we hope you will continue to learn more about increasing your personal safety, supporting community members and engaging in healthy, consensual relationships by joining us for the following Orientation events:

•**Sex, Drugs and Rock n' Roll:** Monday, September 18, at 7 p.m. in "The Edge" of A dorm. Join other students for an honest discussion about sex, drugs, and alcohol. This is an opportunity to ask those questions that everyone wants to know the answers to!

•**Self Defense Workshop:** Tuesday, September 19 from 6-9:30 p.m. in SEM II B1107. An empowering introduction to self-defense and communication. Open and safe for all people to attend. We hope to see you there.

Timia Olsen is an Evergreen graduate and the Student Education Coordinator for Evergreen's Office of Sexual Assault Prevention. Chandra Lindeman is an Office coordinator.

COOPER'S GLEN
APARTMENTS

Rock Maple Village
APARTMENTS

3138 Overhulse Rd. NW
Olympia, WA 98502
866-8181

Welcome, new and returning students!

DOWNTOWN OLYMPIA AT 108 FRANKLIN ST



PIZZA BY THE SLICE OR WHOLE PIZZA PIES PH 360.786.9640

Orca Books
Olympia's Largest Independent Bookstore

New Books
10% off with
Current College ID

We Buy Books Everyday!

509 E 4th Ave

352-0123

Mon-Sat 10-9, Sun 11-6

orca@orcabooks.com

Peace and Reconciliation

Thousands died on 9/11, but on it's fifth anniversary, there was reason to celebrate around the world.

By Arland Hurd

I want to ask you, what is the traditional means of celebrating death of a loved one or loved ones? I know that when my own grandmother died my father cried, but the following years he found interesting ways to entertain the memory of his lost mother. The loss of loved ones hurts and can weaken people's ability to see clearly if they live in that gloom. This 9/11, rather than consume our thoughts with a day that was dark and meaningless, Olympia residents and residents around the country came together to embrace non-violence. September 11, 2006 not only was the fifth anniversary of towers falling, it was the one-hundredth anniversary of Mahatma Gandhi's first non-violent protest against racism.

At 11:30 a.m. eastern time, Arun Gandhi, great-grandson of Mahatma Gandhi, spoke on the steps of the Lincoln Memorial, in Memphis the city came together to instill hope and harmony to its citizens, and Indian musical performers played music to embrace the effort of Arun Gandhi to right wrongs in ourselves and our country. The events that took place across the country were a celebration of a path to become soldiers in the force of peace. Presenting our own want for peace, justice and non-violence, invigorated Olympia leaders came together to present their knowledge to spectators at Sylvester park.

The day included speakers from three different religions, Rabbi Seth Goldstein, Dr. Muhammad Ayab and Rev. Mary Loyd Olney who spoke about what it means to be dedicated to a life of non-violence. Rabbi Seth Goldstein said "a tough introspection of who we are and what we do allows us see the path that we are traveling." The other

Community speakers included Glen Anderson and Bernie Myer, who talked about the structure that our society has and how we live inside of that structure. Bernie Myer, Olympia's own Gandhi, held an event the day before the 100th anniversary of Gandhi's first non-violent protest, teaching the truth force. He was able to convey

were volunteers that presented information to the audience.

Grub, YMCA's Earth Service Corp, Emergency Shelter Network and the Olympia Fire Department were all there showing off the hard work they do to keep the community moving. You probably know what the fire department does. They save lives, but so does the Emergency Shelter network who make their service available through proceeds they get from citizens just like you. Getting people off the streets is a task that is no less important a task as the Earth Service Corps actions of helping keep the city clean and informed about environmental hazards. Grub, an organic farm that provides food to needy families, is always looking for help as are all the organizations listed above.

The day was about peace and reconciliation and many people came together to send off a prayer for those that we lost due to violence and to ask for peace. Musicians such as DJ Essel and Rag Dharma with the help of Pacific Stage made sure that people were staying upbeat. 9-11-06 will hopefully go down in history as a day that turned America's view of this day from a reason to mourn into a means of solution-based living through non-violence.

Arland Hurd is a senior enrolled in A Mind and the World.

This 9/11, rather than consume our thoughts with a day that was dark and meaningless, Olympia residents and residents around the country came together to embrace non-violence.

speakers had just as vibrant account of how we can stay in accordance with the spirit of non-violence. Rev. Mary Loyd Olney stated "Meet force with humor." All the religious leaders had a few meaningful words for the audience. Dr. Ayab of the Lacey Islamic Center put forth the knowledge that there are only a small group of people that like violence, while the majority of us truly enjoy peaceful living.

the fact that there are many realms of reality that exist, but ultimately you yourself have to choose one that is sustainable. Glen Anderson, a man who is crucial to the fight for peace in our city, talked for about ten minutes about the facets of a country who is at war. The community speakers really allowed the audience to see what they were up against when thinking about being preservers of peace. Similarly, there



FREE
Birth Control
for One Year!

at Planned Parenthood

Services include:

- Annual exam and counseling
- Birth control pills, IUD, foam, the shot, vaginal ring, diaphragm, condoms, the patch
- Emergency contraception

Call to see
if you qualify.
Everything
is confidential.

Planned Parenthood® 1-800-230-PLAN
www.ppww.org

2x

**Transit is your ticket
to life off campus!**

Your current Evergreen student ID is your Intercity Transit bus pass. Just show it to the driver when you board and you're on your way to lots of great destinations. (Fare required for service to Tacoma.) For more information, just check our website or give us a call.

Route 41
Dorms, Library, Downtown Olympia

Travels to downtown Olympia via Division and Harrison, serving destinations such as:

Alpine Experience
Bayview Thriftway
Capitol Theatre
Danger Room Comics
Falcone Schwinn
Great Cuisine of India
Grocery Outlet
Hollywood Video
Iron Rabbit
Mekong
OlyBikes
Olympia Community Center
Olympia Art & Frame
and more!

Route 48
Library, Downtown Olympia

Travels to downtown Olympia via Cooper Point Road, serving destinations such as:

Bagel Brothers
Bayview Thriftway
Blockbuster Video
Brewery City Pizza
Danger Room Comics
Earth Magic
Falcone Schwinn
Goodwill
Great Cuisine of India
Grocery Outlet
Heritage Park
Hollywood Video
Iron Rabbit
Mekong
Olympia Community Center
Olympia Art & Frame
Rite-Aid
Safeway
The Skateboard Park
Traditions Fair Trade
Westfield Mall
and more!

INTERcity
TRANSIT

intercitytransit.com
360-786-1881 (every day)

New Moon Cafe

~Breakfast all day~

~Vegetarian & Vegan Friendly~

Weekdays 7am - 2:30pm

113 4th Ave, Olympia, 98501

(360) 357-3452

Now open on Saturday from 8-2



Last Word Books
211 E. 4th Ave Olympia
(360) 788-9873

A Quantitative and Symbolic Reasoning Center Puzzle



The Weekly Quantitative Reasoning Challenge

The Quantitative and Symbolic Reasoning Center (QvaSR) invites you to challenge your quantitative reasoning skills by solving our puzzle of the week. Each week we will present a new puzzle for you to solve. When you come up with an answer, bring it in to the QvaSR Center in Library 2304. If you are

In the addition problem below, different letters represent different digits.

**It is given that N is 6 and T is greater than 1.
What four-digit number does T H I S represent?**

$$\begin{array}{r} T H I S \\ + \quad I S \\ \hline K E E N \end{array}$$

The CAB recap

What you need to know about your auxillary building

By Charlie Daugherty

Welcome to Evergreen! Now empty your pockets.

As tuition rates rise yearly it will more than likely pay off to keep a close eye on the quarterly tuition bills. So when looking at the Student Billing Statement you notice a charge labeled "CAB Renovation Fee (Mandatory)" and you may wonder, what is this all about?

The CAB (College Activities Building), is something new students on Campus will become familiar with as the years go on. In the CAB you'll most likely find someone purchasing books at the bookstore, eating at the Greenery, or experiencing first-hand the challenges and rewards of a student group. Mostly the CAB is a place for students.

So why the charge? Besides basic needed maintenance, the CAB is going to be completely redesigned. In a vote to see whether the redesign of the CAB should be funded through student fees, 643 votes passed the ballot. That was only 15.3% percent of the student body at the time. The vote that needed 25% student body attendance barely made it with just 27.6% (1,155 total votes). These numbers show that a minority of the student body determined a significant decision for the future of Evergreen.

"The CAB vote was the most hotly contested student vote that I can recall," said vice president of student affairs, Art Costantino, in an email to students. Due to low voter turnout there were attempts by staff and volunteers to give incentive for voting including free food, pictures with the Evergreen's mascot, and even gift certificates to the book store.

The money for gift certificates was paid for by Art Costantino in an attempt to reach the voter threshold of twenty-five percent. Without the minimum 25% voter turnout the decision would have had to wait another year and the money spent on the ballot along with the design planning would be a waste.

The buying of votes was seen by some as an attempt to persuade voters' decisions. To the pre-design committee and Costantino, free stuff was a struggle to motivate students to get involved when numbers were low. In response to student outcry, Art stated in an email, "My primary concern before and during the elec-

tion was participation." However, towards the closing of the ballot, a majority of votes were in favor of a yes. This means that yes and no votes were only helping to reach the 25% mark to make the vote legitimate.

In addition to this vote there was another ballot that asked, "If a fee increase is approved, which of the following plans for the renovation would you like to see implemented?" Of three possible designs, the largest and most expensive one, entitled plan C, was picked. The breakdown of votes was 312 votes for plan A, 215 for B, and 562 for C.

Plan C included an indoor and outdoor performance space, edible roof garden, student-run store, and the possibility of a stream complete with waterfall. However, these features were all put in as placeholders for a budget for the project. This means the above features are not final and more design meetings will be held. As of now the plan is 14,500 square feet will be added to the building to provide room for future students and services.

The pre-design committee made of students, staff and administrators spent four months working with Perkins and Will architectural firm along with the student body to come up with the input based designs. Three designs were created at three different price ranges and features.

The total estimated cost of Plan C is \$20,970,000 and is planned for three fourths of the funding to be provided from students, taking 15 to 20 years to pay off. The student fee is currently set at a fixed rate of \$5.75 per credit. This means that on average students will pay \$276 within a school year.

The Fee is smaller in comparison to other colleges in the Washington area that have also approved student-funded building costs. For example, WSU has an annual student fee of \$290 dollars to fund several facilities including the Compton Union Building, a recreation center and Martin Stadium.

The building is going to be repaired whether there was a vote or not. The only elevator in the CAB has been under repair this summer and its 35-year-old ventilation and electrical systems need to be upgraded. Without students paying for Plan C, a redesign of the CAB could not be accomplished. Evergreen is requesting \$4,900,000 from the state to help fund the cost

but will not know the results until April of next year.

Next in the process requires a four-step program, which will include additional surveying and student input along the way. Another design committee will be formed including 5 students and will take up to 15 months to hammer out the details of the design.

Construction on the project is planned to begin between summer and fall of 2008 with a target completion date of 2010. Talk is already underway as to what will happen to services provided in the CAB during construction. No decision is made on where services will be moved, with a possibility of moving student activities and the bookstore to the library. Food services, which requires the building's equipment, has brought into question whether construction should be split into parts.

Although the vote was controversial and the CAB fee is another bill to pile on to ever increasing tuition rates, added space is needed. Plan C "meets all the square footage requests of current users," as said in a design explanation—meaning students and auxiliary services have been requesting more space since last year. As of now the CAB can get pretty crowded on a busy day, especially during lunch hours. If the school's population continues to increase, added space will be necessary in the cafeteria.

For more information on the CAB redesign and its progress, contact the Administration of Student Affairs Office 360-867-6296 or email Art Costantino at CostantA@evergreen.edu.

Charlie Daugherty is a sophomore enrolled in Images of Women: Changes in Japanese Literature.

New York Style Hand Tossed Pizza

Huge Selection of Fresh Toppings !

Pizza By The Slice & Whole Pies
Vegan Pizzas Available
Salads, Calzone, Fresh Baked Goods
Micro Brews on Tap, Bottled Beers, Wine

Dine In or Call Ahead for Take Out
360-943-8044

Located at Harrison & Division (233 Division St. NW)

Olympia's King of Cheese Steaks

We use many local, natural & organic products

We use 100% natural hormone free beef

Olympia's Downtown Cafe

Serving lunch, dinner and late night grub

Awesome breakfast every Sat & Sun 8am-2pm

Free Zhonka wireless internet

406 4th Ave Downtown Olympia

Phone# 352-7565 www.clubsidecafe.com

Evergreen Hookup

\$2.00 off

Any meal with drink

Must present coupon when ordering.
Not valid w/ any other offer. Expires 12/31/06

Mon-Thu 11AM - Midnight

Friday 11AM - 3AM

Saturday 8AM - 3AM

Sunday 8AM - 10PM

Where am I?

Your guide to campus buildings



By Sean Paull

Welcome to Evergreen! You've just traveled here from <insert city here> and after settling into your dorm, you step outside to explore the campus. However, you soon realize that many of these buildings that dot the landscape are largely made of concrete and give little sign as to what is contained inside. Worry not, for this guide will help you to identify each of these buildings and why they matter to you.

The Library Building

The library went through an extensive renovation last year and so you will be one of the first people to see it in its new and magnificent state. From stained glass to the wide open lobby to the circulation desk, everything has been totally revamped and looks amazing. In addition to the library, the Library Building also has a number of important offices and student resources, such as the Computer Center, Registration and Records, Admissions, Student Accounts, the cashier, the galleries, Financial Aid, the Tutoring Center, Student Academic Support Services, the Deans' offices, and the President's office. The Library Building is the main hub of the college's operations.

Lab I and II

If the Library Building is the hub of college operations, then the Lab buildings are the hub of scientific learning. Consisting of three stories and a basement, the Lab buildings house a number of amazing gadgets and facilities to further our comprehension of the world around us and its properties. Also, if you're ever curious about what your fellow students are studying, they usually hang posters depicting their projects on the walls, which can provide an interesting educational experience as you walk through.

Arts Annex

Pottery, metalworking, and still lifes, oh my! As the name might suggest, this building houses all things art. Students work frantically on their masterpieces inside the many studios and shops ensconced in the Arts Annex, like the 3D arts studio or the metal and wood shops.

Communications Building

The COM Building contains within its hallowed walls a number of interesting facilities. For all you thespians, there's the Experimental Theater and the costume shop, and for musicians, the Recital Hall and practice rooms galore. For film buffs, there's some post-production film facilities. You might also want to know about the music check-out center, where you can borrow everything from mandolins to tambourines.

Seminar I

The classic Evergreen seminar. Where would we be without it? Although it's unlikely that you'll have a seminar in Sem I due to the number of students it can hold as compared to Sem II, don't discount the importance of this building. Inside these walls you'll find the Health and Counseling Center, as well as Police Services and EF student class rooms.

Seminar II

The recently constructed Seminar II building has won a number of environmental architecture awards since its construction and is a monument to the college's efforts toward sustainability. It

also has a wide variety of rooms for all purposes, from lecture rooms on the first floors to seminar rooms on the second and third floors to wide open rooms on the fourth floors to lounges that pervade all floors. There are also a number of important community resources in Sem II, such as the Community Language Center and the Center for Community-Based Learning and Action. Also, don't

Longhouse to host group meetings of many different sizes. The Longhouse is truly unique among the college's buildings and in general, being the first building of its kind to be constructed on a US campus.

College Activities Building

Although the appearance of the CAB building is scheduled to change in the next couple of years, for now the CAB

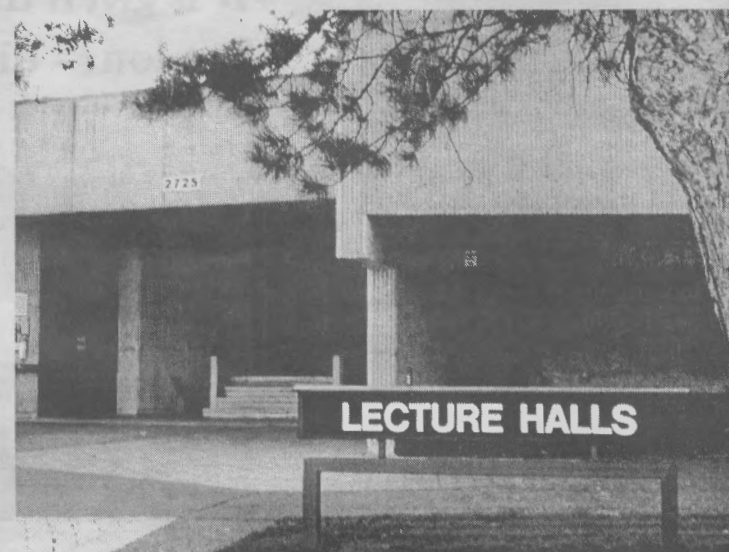
student groups, including your friends at the Cooper Point Journal. If you want to get involved on campus, drop on by and see what student group might interest you.

A Dorm

A towering edifice of a building, the A Dorm is the largest of the dorms, both figuratively and literally. Besides housing freshmen, this building serves



The College Activities Center



The Lecture Hall Building



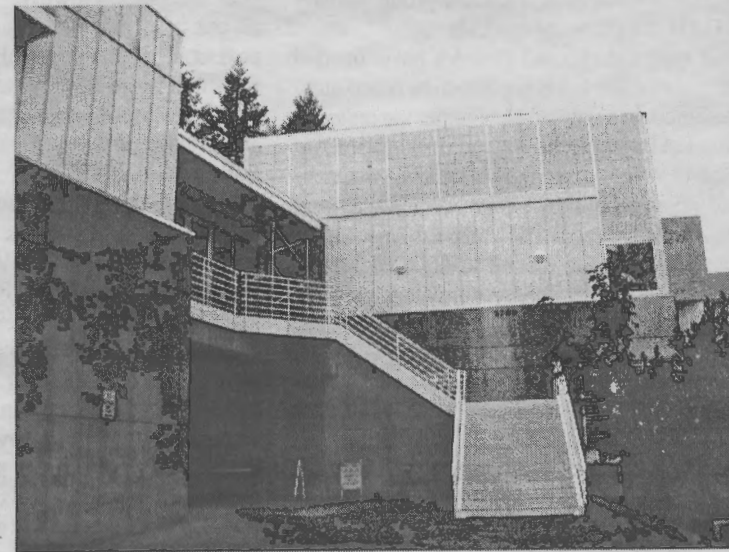
Seminar 1 Building (police and health services)



The Lab Buildings



The College Recreation Center



The Art Building Annex

miss the café in the bottom of the B building, as it can be a convenient food stop when dashing from one class to another or while you're on a five-minute break.

Longhouse

The Longhouse stands as a testament to Evergreen's commitment toward the Native American programs and stands out from the stoic concrete of the many other buildings. The carvings and the fireplace are works of great art, and the many folding walls inside allow the

largely functions as the home of the many student groups on the Olympia campus and the primary place for hot food. Down in the depths of the CAB you can find the Bike Shop, a handy place for repair and maintenance tips and help. In the first floor is the Greenery, a buffet-style eatery run by Aramark. The second floor has the Market, a more on-the-go style eatery also run by Aramark, as well as the student bookstore. The third floor contains the student activities office and is the headquarters for the campus'

as the headquarters for Housing staff and Prime Time Advising, the A Dorm tutoring center. A Dorm also has The Edge, a small gathering room outfitted with audio and video equipment, as well as laundry facilities for those who live close to A Dorm.

College Recreation Center

If you're into sports, then this is the place for you. This structure contains Evergreen's gym, a fitness center, a

Continued on next page . . .

Am I here?

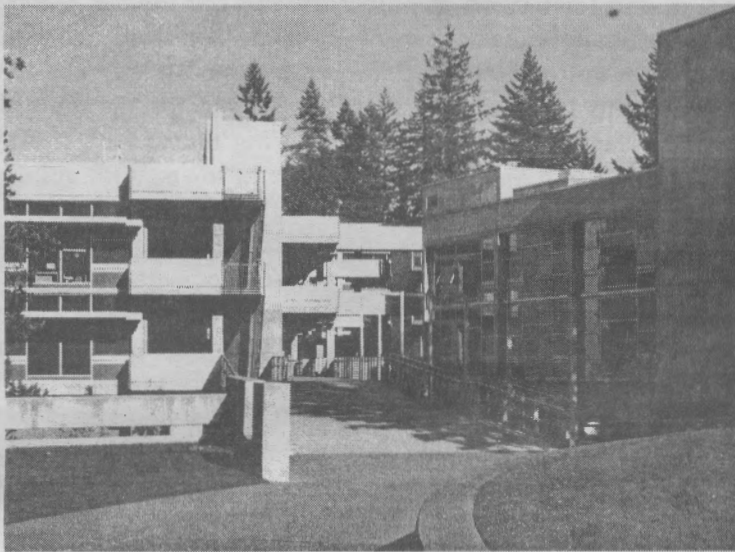
"Where am I" continued...

swimming pool, racquetball courts, the climbing gym, and a number of other amazing facilities. The CRC is also home to The Outdoor Program, an office that coordinates trips off-campus for students.

Housing Community Center

The HCC is mainly a social area, with a big screen TV and a number of table-top games scattered around the main room. It's a social spot in the dorms, and as you meander through, you may encounter friends leaving the Corner Store—a mini grocery store—or people who have just gotten finished with their laundry, as the HCC provides the main source of washers and dryers for those farther out in the Soup.

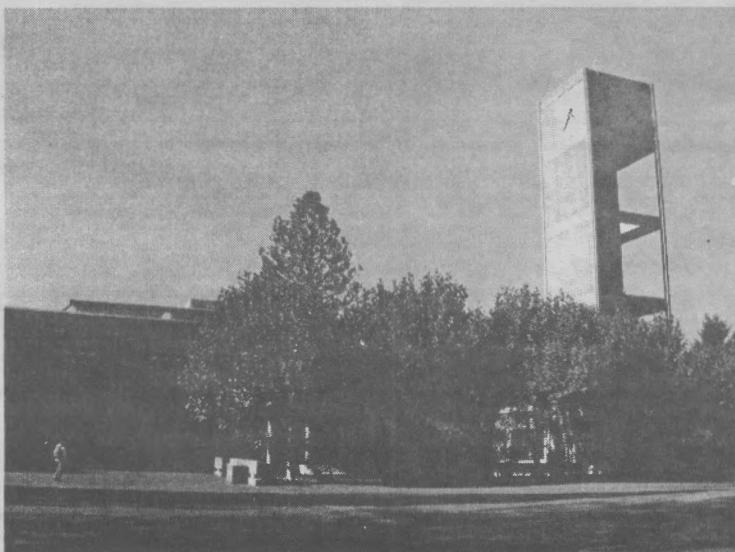
So go out and explore a little. There's always some little spot or resource you never knew about that you wish you had been aware of, and the best way to find it is to get out there yourself.



The Seminar 2 Buildings



The Housing Community Center



Evergreen Red Square

Sean Paull is a senior enrolled in Arabic and an internship. He is also the managing editor for the Cooper Point Journal and can answer any questions you have about the group at (360)867-6213. Photos by Charlie Daugherty.

Your Ticket Off Campus

By Lisa Hubert & Emily Uhlig

Whatever happened to the Saturday excursion? There used to be a time when entire afternoons were spent "downtown" in the shopping areas, in the markets, or in the small novelty shops that every major city has to offer. The excitement of a trip "downtown" has been somewhat lessened by the convenience of transportation. The leisurely stroll along the boardwalk has been quickened to a short drive along the strip mall. Well, now that we're all in college and the convenience of driving has turned into the inconvenience of paying unreal fuel expenses, it might be beneficial to consider an alternate form of transportation. Fortunately, there is a fast, easy, and comfortable alternative to driving right here on campus—and most importantly, its free.

One of your best resources on campus is the Intercity Transit system. The bus lines 41 and 48 both cater to the Evergreen campus, stopping in both the dorm bus loop and the library loop. The bus is free with your Evergreen student ID and runs Monday through Sunday, with stops every half hour. So leave the car and the pollution at home and let us take you on a ride through a typical bus route.

The bus loops out and takes a right on Cooper Point Road. After a couple miles you reach Capital Village where you can satisfy your basic shopping needs with Safeway, Rite Aid, and Goodwill. If you're looking for an even greater shopping experience, stay on the bus and it will continue out to Capitol Mall. At Capitol Mall you can find clothing: Macy's, Penny's, Mervyn's, Chico's; restaurants and entertainment: Red Robin, Borders, and cinema as well as office and home care and supplies: Target, Bed, Bath and Beyond, Office Max. Keep riding to Harrison and Division and you have more grocery stores, Hollywood Video, specialty, and fast foods. There's a bowling alley, casino and bar spots in the entertainment venue.

The bus continues downtown. Once you're in Olympia, you can buy all the things you need as well as the stuff you never knew you needed or even knew existed. There are a lot of restaurants downtown—it's your choice of Thai, Vietnamese, Italian, Mexican, seafood, baked goods or whatever variety you could want to eat. The Port of Olympia Marina is just past the mall area. Here, you'll find many small novelty shops (bookstores, antique stores, even magic shops!), and many lively shoppers and streetwalkers on their way to the Farmer's Market. Fruit stalls and vendors line the street most weekends. The scent of fresh market flowers is reminiscent of the Pike Place Market in Seattle.

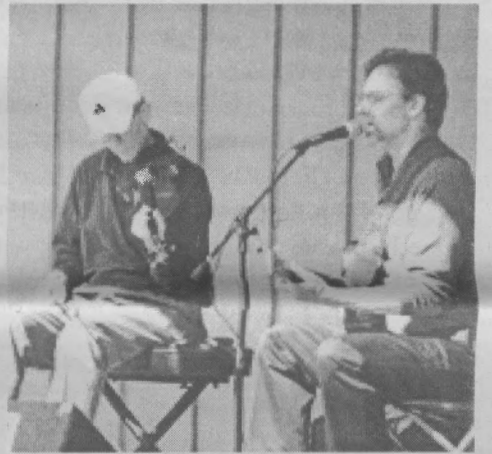
Olympia's tiny answer to that sprawling street fair is this small, locally operated Farmer's Market. There is also a small stage on which local musicians will often play for the market crowds.

It's all very easy. Just hop on the 41 or the 48 and you'll be downtown before you know it. Obviously, it's just as quick and easy to come back. The best part of all: you don't have to pay a dime.

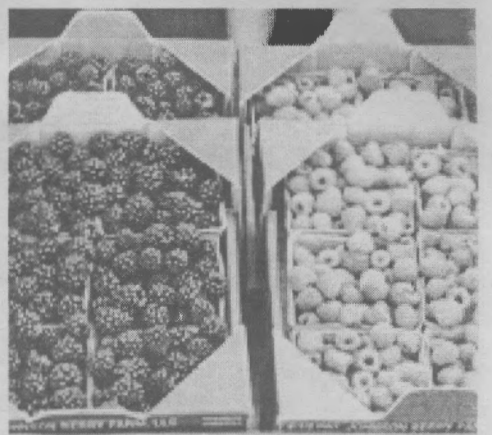
Lisa Hubert and Emily Uhlig are both transfer students.



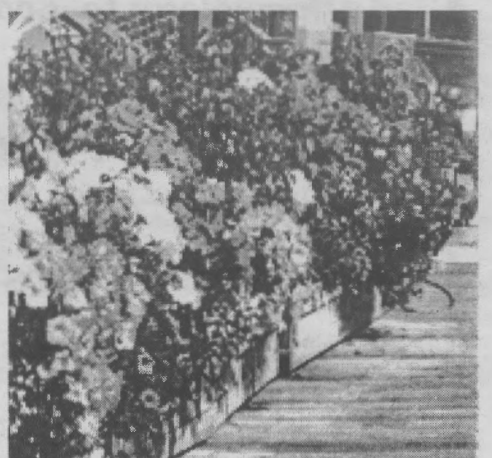
Statue at the Marina



Musicians! at the Farmer's Market



A display of fresh of fresh berries.



Flowers outside of a cafe near the Farmer's Market

Article by Erin Rashbaum
Photos by Lindsay Adams

UNDERAGE

Welcome to Olympia, my young friends! I'm sure you are smitten with our lovely campus, but you will eventually want to explore what lies beyond. For an underager, this can be a bit tough, as every bar, club and show caters only to those of drinking age. But fear not! I've compiled a list of the best Oly destinations where you will be greeted with open arms. All of these may be reached by the 41 bus line, which travels from campus to downtown. Unless otherwise noted, they are all located downtown.

First, because many of your parents are in town, **Water Street Café**, 610 Water Street, and **Cielo Blu**, 514 Capitol Way S., are good dining options. They both have superb service and ambiance, along with out-of-this-world food that you'll never be

able to afford on a college budget. Once the 'rents leave town, you should familiarize yourself with the **Westside Olympia Food Co-op**, 921 Rogers St., just off Harrison and Division, and the **Olympia Farmer's Market**, walk along the pier, Columbia or Capitol Way n' you'll see it. The Co-op is volunteer-owned and run and carries mostly organic, fresh produce and prepared goods. The Farmer's Market, which is open from early April through late December, Thursday through Sunday, often has live music to accompany the hustle and bustle of folks purchasing seasonal fruits and veggies, flowers and local artwork.

Olympia has neat hangouts for the bookworm in all of us with **Orca Books**, 509 4th Ave. E, **Browser's Book Shop**, 107

N. Capitol Way, and **Last Word Books**, 211 4th Ave. E. If film is more your cup of tea, check out the **Capitol Theater**, 206 5th Ave. SE, and **Rainy Day Records**, 301 5th Ave. SE. The Capitol Theater shows art and independent films, and often has specialty shows on the weekends. It's old, lovely and volunteer-run (check it out—good way to meet people). Rainy Day has a great selection of foreign films and good music.

I don't think you're an official Olympian until you've eaten at **Le Voyeur**, 404 4th Ave E, **Vic's Pizza**, 233 Division St. NW—on the corner of Harrison and Division, and had the lunch buffet at **Great Cuisine of India**, 116 4th Ave W. Le Voyeur doesn't have the best service and you'll leave there smelling like a French

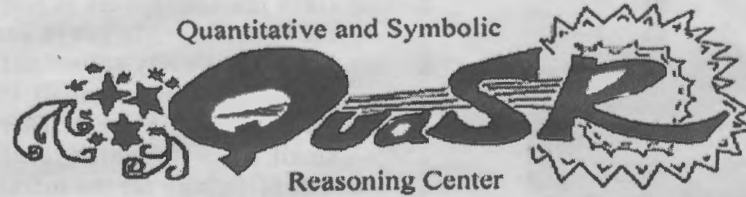
fry, but the food is tasty and the décor is kooky and fun. It's basically a vegan/vegetarian-friendly, hipster-esque greasy spoon. On top of the allure of the eye candy working there, Vic's has by far the best pizza in town. With quirky toppings and a vegan slice that'll knock your socks off, this is one place which must not be missed. And do yourself a favor by ordering their intoxicating sparkling lime-ade. If you go to the Indian buffet on any given day, you're likely to see a few Greeners. For eight bucks, you get all the scrumptious Indian food you can eat and will likely not need to eat anything else all day.

DOWNTOWN

ANY STUDENT, ANY PROGRAM, ANY LEVEL

From Algebra to Z-Scores,
Anthropology to Zoology,

the QuaSR Center is here
to assist you with your
math and science needs.

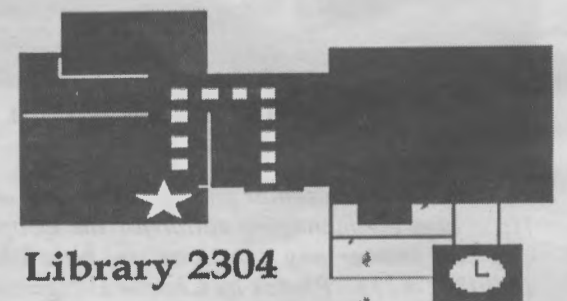


www.evergreen.edu/mathcenter
360-867-5547

Monday-Thursday 11 to 8
Friday 11 to 4
Saturday & Sunday 12 to 5

Tutors are available for:

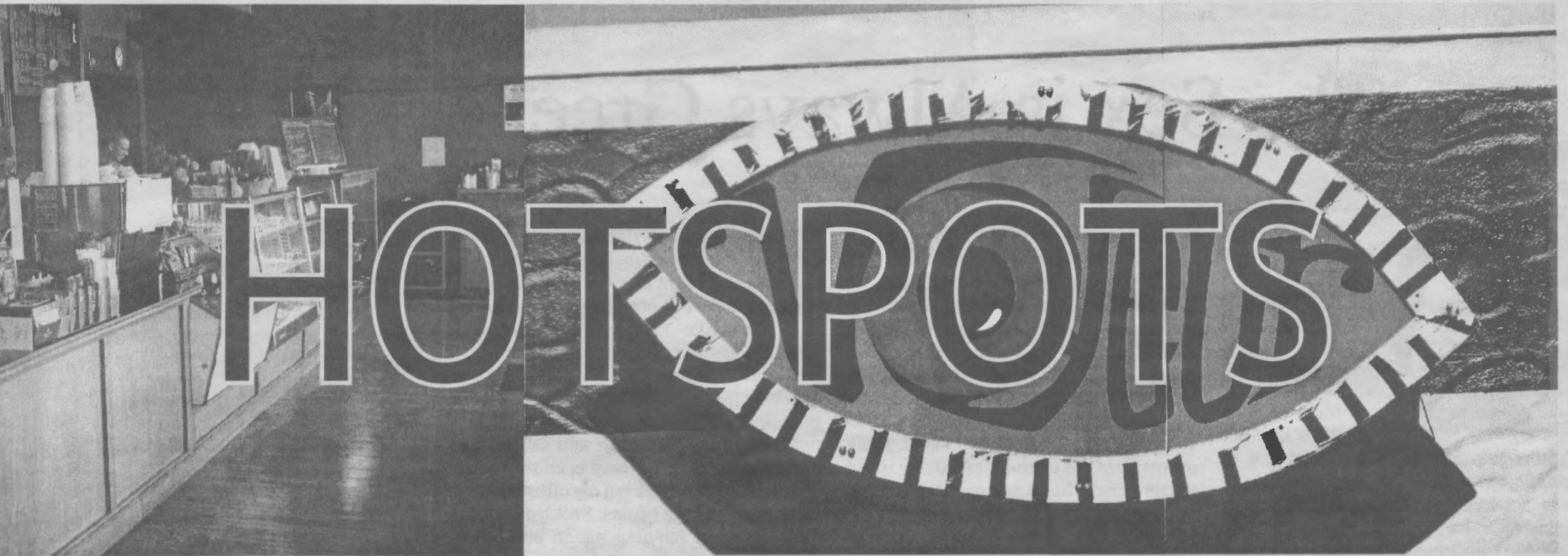
- Drop in Tutoring
- One-on-One Peer Tutoring
- Homework Help
- Resource library
- Helpful Handouts
- Calculator Help



Library 2304

Red Square

Director: Vauhn Foster-Grahler {fostergv@evergreen.edu} 360-867-5630



HOTSPOTS

There are a plethora of awesome breakfast/brunchy places. **New Moon Café**, 113 4th Ave, is owned by former Evergreen students and has insanely delicious, veg-friendly chow. Try the tofu benedict and you'll never need to eat another egg. **Darby's**, 211 5th Ave. SE, is another good option, whose hours have recently expanded to 9 pm. The **Chestnut Corner Café**, 700 4th Ave. E, and **Rosey's**, 903 Roger's St.—next to the Co-op, are owned by the same folks and have sunny, friendly environments and heavenly grub.

If you're on your own or looking for some cheap eats, check out **Little Da Nang**, 301 4th Ave. W, **Traditions**, 300 5th Ave. SW, or **Otto's**, 111 Washington St. N. Little Da Nang is a tiny Vietnamese place in a bright green and red building. With a spring roll and a cup of hot n' sour soup, you can get a

meal for under five bucks. Just around the corner is Traditions, which has both a rad Fair Trade shop and a café overlooking the Capitol Lake Park. This is a good place to sit and people-watch or read a book over a vegan panini or a slice of homemade gingerbread. Otto's is a spacious hangout with a fun staff, wicked coffee and bagels, and mouthwatering cream cheeses, tofu spreads and pastries.

Enough about food, let's talk coffee. **Batdorf and Bronson**, 516 Capitol Way S., is the way to go. B&B provides their fine coffee to many local businesses, but their coffeeshop provides an expansive, yet comfortable atmosphere and a grand selection. Hardwood floors plus comfy, leather couches equals good stuff. A tragedy of our lil' town is that no coffee shops are open past 8 p.m. After this time, your best bet is

Plenty, 200 4th Ave. W. Plenty is a slightly-overpriced restaurant, but their coffee and espresso drinks are top notch, ambiance is nice and they don't mind you coming in just for a cup o' joe and perhaps dessert (positively *sinful* brownie sundae).

Just a few more random spots: **Yashiro Japanese Garden**, 9th and Plum St., is free of charge and a lovely place to write, meditate or just relax. You're eventually gonna need a hair cut, so check out **Jamie Lee and Company**, 309 4th Ave. E. The environment is eccentric, yet inviting, the staff is excellent and prices are reasonable. If you're feeling playful, make your way to **Wind Up Here**, 121 5th Ave SE. This kick-ass toy store offers everything from mind-bending games to dress-up clothes, puzzles to stuffed hippos. Just go, you'll have a blast. The **Waves Studio**, 312 Columbia St. NW, offers

both Living Spirit Yoga and Five Rhythms Dancing. This place is good for the body, mind and soul, and can help get you through the bleak winter months. Another amusing option is swing dancing at **Eagles Ballroom**, 805 4th Ave. E. There's a beginners swing lesson every Tuesday at 7:00 p.m., then dancing from 7:30-10:00. Five bucks for a swingin' good time. You could simply hang out in **Sylvester Park**, on Legion Way, between Capitol Way and Washington St., to read, chat, have a picnic, etc. You can even saunter across the street to **Bubble Island** for a fruit-alicious bubble tea. Finally, be sure to take a stroll down **The Pier** to take in the lovely view and public art.

Happy explorations!



OLYMPIA

Write. Think. Grow.

... creative writing ... essays ...
 seminar papers ... evaluations ...
 resumes ... cover letters
 ... conversations ... drafts ...

Monday-Thursday 11 to 8
 Friday 11 to 4
 Saturday & Sunday 12 to 5
 Prime Time in A Dorm: Sunday-Thursday 6-9



The Writing Center LIB 2304

www.evergreen.edu/writingcenter

867-6420

The Sex is Always Greener

By Erin Rashbaum



Woo hoo! No more curfew! No more parents asking why you and your boyfriend are in the bedroom with the door closed!

You're at Evergreen now and can talk to people about anything from sex toys to whether come smells like bleach or pancake batter! I welcome you and would like to guide you through some basic aspects of sexuality at Evergreen. I'm a staff member and regular contributor to the Cooper Point Journal. Name's Erin Rashbaum: twenty-two, bisexual and not easily embarrassed. I've written about how to find the g-spot, how to deep-throat and the best ways to try bondage, as well as all sorts of lubrication, contraception and disease prevention issues and techniques.

Evergreen may seem huge now, but in a few months you'll find that there won't be much anonymity. This school has approximately four thousand students. That's probably twice the size of your high school, but one-eighth the size of an average state university. Evergreen's size can complicate sexuality, particularly if you are living on campus. Think of it as high school with people who listen to better music, get stoned regularly, know what's going on in

the world and live within a quarter mile of each other. If you hook up with someone, you're gonna see them around.

A small sexual community can also feel incestuous at times. It's not abnormal to date a girl who has slept with your best friend and dated your neighbor, while you've had a huge crush on her roommate and boned her enemy. This may seem awkward at first, but it's hard to avoid. A big downside to this close-knit sexuality is that if one person has a sexually-transmitted infection (STI), it'll spread, so COVER UP! You can get latex love packages (yep, that's really what they're called) at the health center and never have to buy another condom, so there's no excuse. Yes, I know sex feels better without a condom. If you're in a monogamous relationship and have both been tested (which is also free for students), you could use a less-numbing form of protection. Planned Parenthood, located downtown on 402 Legion Way, can issue several different forms of birth control for free with their "Take Charge" program.

Don't get me wrong—Evergreen is not a particularly promiscuous school. I was actually quite surprised to realize how many people began college as virgins or only having minimal sexual experience. These kids aren't necessarily the I'm gonna wait 'til marriage or I'm gonna wait for Jesus folks. They just haven't done it yet. If you haven't, you're not alone.

There are many "flaccid" encounters early on amongst freshmen living on campus. You might sleep in the same bed with someone and not go beyond a peck and a back rub. Come winter however, when it's too gloomy to go outside, things tend to heat up in the bedroom. As tragic as it may be, the under-twenty-one crowd is lacking in downtown entertainment options. Every bar, club and even the majority of shows are only open to those of drinking age. Check out my other article for some underage haunts. Still, you'll be doing a lot of hanging out in people's dorm rooms smoking and drinking any alcohol you can salvage. Hey, don't be discouraged. Trust me, you can have a lot of fun here.

Now for a few friendly suggestions:

- Be tolerant of different sexual preferences. Many people here are not embarrassed to call themselves slutty, asexual or pansexual. Try not to make assumptions—the effeminate guy in tight jeans may be straight and simply comfortable enough in his sexuality that he doesn't feel the need to flaunt his manliness.
- Be wary of dating within your building. You'll still have to see these people daily once the romance is gone.
- The walls are thin, so keep it down. If you plan on bumping uglies, move your bed away from the wall.
- Most college relationships end.

You don't want a bitter boyfriend to have the keys to your room, car, chastity belt, etc.

□ Condoms are great, but can break. Just be careful, use a water-based lubricant and keep some Plan B handy (also free at Planned Parenthood).

□ People here are used to discussing things in seminar style. This can range from the Iliad to Iraq to Irene, the blow job queen. These things are said, they just aren't called gossip.

□ Crabs aren't the only parasites you have to look out for—beware of bed bugs and scabies in the dorms.

□ Don't date/sleep with people in your seminar. Once the class ends, if you're still into each other, then go for it.

□ People don't care as much about your sex life as you might think.

□ There's usually someone who will hook up with you.

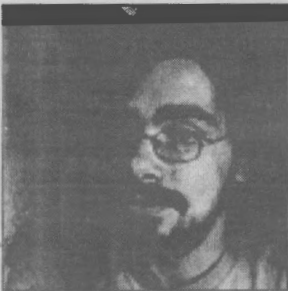
□ For the love of Pete, GET TESTED EVERY SIX MONTHS or after any risky activity!

More questions about sex at Evergreen? Please attend the discussion "Sex, Drugs and Rock n' Roll" at 7:00 on Monday, September 18 at The Edge in A dorm. Now go forth and conquer, you pirates, you! I wish you good luck, good health, good evals and good lovin'!

Erin Rashbaum is a third year student

One Bike, Two Bike, Red Bike, No Bike

By Curtis Randolph



Imagine that you just got a new bike. You're so excited that you ride your bicycle. This goes on for maybe ten minutes

and then BAM, flat tire! But that's okay, who knows how old those tires are, and Evergreen has a friendly bike shop that helps repair bicycles at minimum charge. After a bit of headache getting all the gears off, you buy a new inner tube and put the gears back on. Thus, several hours later you have a brand new bike again. However, as you go to the library to check out a book, you come out and BAM, someone has jammed an industrial-sized thumb tack into your back bike tire and popped it again. Fucking assholes, you say. You're pissed, but still levelheaded enough to know not to ride a bike home with a flat tire, so you just leave it locked up until you have hours to spend fixing it again. One day, as you're walking by to get to class, you realize it is not there. What is there is a snipped bike lock. BAM, your bike has been stolen! You're never going to see it again!

Switch you with me and that scenario is just one true tale of heartbreak among dozens in the last year. There is an epidemic, and very few are safe. Don't be like me and assume it won't happen! Although there wasn't much I could do about the asshole who popped my back tire, the theft I could have prevented. Here is an informal guide to keeping your bike safe on campus.

Ever since the United States implemented prohibition on all drugs besides alcohol there have been huge drug problems in the United States. This is an observation that many take to mean that we need to

crack down on drugs even harder, but that's a different issue. What's an issue for us is the drug addicts who need fast easy money to keep themselves one step ahead of agonizing withdrawal. For just twenty dollars anyone can buy some heavy-duty wire cutters, which is a good investment considering how much money some of the bikes on campus are worth. Their battle plan is to clip the wire-based bike locks late at night, take the bike to their van, and after that to a chop shop to sell the bike for scrap parts. Net result for the hedonists? A week of barbaric indulgence before being broke again.

The big trick to keep your bike safe is to get one of those heavy-duty metal t-locks. A thief would need some very elaborate machinery to cut through one of those. The next thing to make sure of is that the lock is attached to A) the bicycle, B) the bike rack and C) the front wheel. The reason to lock the front wheel is because it is an easy part to take off from a bike (unlike the back wheel with the gears, as I described above). If you have only locked up the bike frame, you will lose your front wheel. If you have only locked up your front wheel you will lose the rest of your bike. Lock them both up.

The last thing you need to make sure of is that you buy an expensive bike lock. I know, it sucks right? But the problem with the cheap ones is that it's apparently easier to get master keys that unlock all bike locks of that brand. As far as I can tell, with some of the real cheap ones, all you need to do is buy a set, and use the key that comes with it to unlock all others (they appear exactly the same, but I'm also not an expert on this.) You just have to think about it in terms of how much your bike is worth, and if thirty bucks for a more expensive lock is worth it.

Just remember that even though you are in a small utopian society inhabited

by druids, there are still thieves who will steal anything they can if it means they can pump themselves full of liquid happiness for a week. What ever you do, don't let them be happy! Lock up your frame and front wheel to the rack, and, if it's possible, keep your

bike at home or in your dorm room where no one can get it.

Curtis Randolph is a senior enrolled Advanced Audio Production and Marketing.

Transfer students: Cultivating your college experience

By Lisa Hubert



Perhaps at our old schools, we were the weird ones. Maybe we were the ones who wore the different clothes, the ones who wouldn't

speak up in class (or spoke up in class too often), or the ones who would have done really well in class, if they'd actually gone.

It's likely that we were individual, intelligent and learned, yet still felt terrified at the very thought of a Scantron. It's even possible that we surprised our friends and family by deciding—smack dab in the middle of our college career—to up and move into the middle of a rainforest.

In any case, we're transfers. Our college experience is going to be different and unique from everyone else's, because our life goals and needs have shifted or changed entirely. We've decided to come to Evergreen, an alternative school and probably nothing like we have ever expe-

rienced. Like any difficult new decision, its going to be daunting at first. There are people here who have been in these crazy things called 'seminars' for two or three years already, while we still have no idea what to really expect from one. I know that for me, at least, the move to Evergreen is certainly an intimidating one.

So, I spent a little time researching and talking to people. Probably the most common advice I received was 'you take out of here what you bring in.' I think that, as far as advice goes, this is possibly the best I've heard. Yeh, we're new. Yeh, our education has been a little bit interrupted and disrupted by our change of schools. But we have to remember the reason why we transferred! We are taking our education by the horns, taking control of it for ourselves. Now's the time when we want to put forth the most effort, in order to gain the most in the long run. You 'reap what you sow,' which is fortunate since there seems to be a lot of gardening that goes on around here.

Lisa Hubert is a junior.

Dear incoming housing residents:

By Lindsay Adams



In a very short time classes will start and your dorm room, as dingy and white-walled as it may seem, will become your sanctuary for

those few hours you get each day to sleep. That's how my beloved B-415A dorm turned out. After hours full of rowing practice, class, homework and meetings at the CPJ I was ready to crash. Just my roommate, me and ... our new furry white friend that had developed from the leaking heater. Mold.

We discovered the mold under my "wardrobe" on a lazy Sunday afternoon when the only thing to do on campus was rearrange our room. After a few screams of "What the hell!" we—I—calmed down and removed all of my clothes from the bar inside. The next few weeks were a blur of yellow tags littering our hallway and this huge machine called the "dehumidifier" (insert maniacal laughter here) that Housing put in the mold-infested corner of the room that was supposed to take all of the moisture out of the air and somehow kill the mold.

One step into the room and a marathon nosebleed ensued for the next 45 minutes. After a few laughs with my roommates, I stood there staring into the mirror, brooding, bleeding and plotting. I couldn't help but think of how in most movies after this overused scene (minus the nose bleed), someone usually dies. The same is true in this instance. The machine got unplugged ... by the roommate.

The mold was making me sick in the morning (and yes, my dad was worried I was pregnant) and my clothes, which I removed from the "wardrobe," were strewn across our already small room. As much as Housing maintenance had worked on the leaky heater, the mold persisted. The next day I marched over to the housing office and demanded to move.

The Housing office, however, did not see the black and white furry beast taking over our room as a priority, so I decided to prevail over the mold and take action. I found a lovely apartment in the Soup with a vacant room, and climbed the Housing ladder to talk to someone who could help me out. Within days I had moved into J: a clean, mold-free environment filled with another group of fun roommates.

So what is the point of this letter? All's fair in mold and war. If something is broken or, as in my case, growing in your room, contact Housing! They are paid to fix your leaking heater or clogged toilet. Don't sit back and curse Housing. You signed the contract and unless Mom and Dad can cough up the cash to get out of it, you're stuck. So make the best of it—not everyone has a furry, messy, bloody Housing horror story.

Lindsay Adams is a sophomore enrolled in Ireland. She is also the Cooper Point Journal business manager.

Getting along in the dorms: From the point-of-view of a picky roommate

By Carrie Ramsdell

It's finally orientation week and that means it's check-in day for moving into housing!

When I was a freshman two years

ago I remember how excited I was to move into my own place with roommates and be on my own.

The freshman experience of moving into on-campus housing for the first time is not only exciting but is an opportunity to try out a new living lifestyle. It is also a chance to meet and live among people from backgrounds that are entirely different from your own. Life in the dorms will bring about some of the best times in your life, so don't get me wrong when I focus this entire article on what happens when things go wrong. There is usually more pleasure than anxiety.

Some people are very easygoing about loudness, rules, cleaning, and are hard to anger in general. Some people have more expectations than others. Personally I am very particular about things like the noise level in my living surroundings, so I have explored most of the options available for coping with difficulties in the dorms.

The biggest thing that stands out about living in the dorms is the fact that there are resident assistants. In my experience, the RA's are not as much there to pound down on you or get you in trouble, they really are there to help you get along with your roommates, adjust to dorm life and deal with life on your own for what is the first time for many freshmen. We all know that talking with your neighbors and roommates to settle disputes is the first step, but when that doesn't work it is the RA's job to mediate the argument.

Housing also allows you to move once, within an allowed week, if you find that you don't like your room assignment or you cannot settle your dispute. I've personally taken advantage of that opportunity both years that I lived in housing, but I am more on the picky side than most people.

That leads me to my most important point of all. You can't fix every problem that you have with your living situation. Sometimes you have to learn to live with a roommate who is a little messy or neighbors who are loud. Sometimes you have to learn to be a little quieter yourself. Everyone has to compromise and at least try to accept new things, and that is really what makes living on your own for the first time a unique experience.

Carrie Ramsdell is a junior enrolled in Food.

On-campus housing tips from the inside

By Wendy McCutchen

Evergreen's housing situation can be quite an enjoyable experience, but before I let loose the perks of on-campus

housing, I've got a few suggestions. First, look out for the green linoleum and the drab discomfort of the stubble-like gray carpet (if you're lucky you might have hardwood floors). Also don't be too disappointed if you get a cantankerous heater, it's fait common. It will not run when desired, and often fumes unwanted, regardless of your coaxing at the thermostat. And if you hear weird clinky sounds (sort of like radio static) radiating out of it along with the heat at 3 a.m., don't worry: that's perfectly normal.

I would also strongly suggest investing in your own shower curtain and bathroom rug. When you get your first glimpse of the shower curtain you may understand why, you will likely avoid contact with it as much as possible. The rug is really for your own good, because when you step out of the shower onto that green linoleum (with bare wet feet), slipping is almost inevitable, and when you slip you will most likely grab for the first thing handy, which is usually the browning-goldish shower curtain. So yeah, unless you'd like to end up bruised on the floor or wrapped in a 15-year-old shower curtain (or else are extremely lucky and graceful), get the rug, buy the shower curtain.

My last bit of advice is to remember to close your window at night, unless you'd like to be eaten by mosquitoes, and raccoons if you're on the bottom floor (just kidding about the raccoons, they might not eat you but they will come inside).

Now believe it or not, there are some excellent benefits to living on campus. Space-wise Evergreen housing is fairly good, not too cramped like some college dorms. You'll never have to share a bathroom with more than five people (unless you plan on throwing some parties). Also there are some great little trails out behind the parking lot which are available for a walk down to the beach (sadly not so great for swimming), a hunt for the various tree houses, or really just plain meandering. You're going to be seeing a lot of raccoons and most likely a couple of deer (even if you don't go on any trails).

Evergreen has a strong sense of community, and being on campus often enhances that experience. You can go the CRC and work out for free (provided you may have to wait for your turn on the treadmill). The biggest benefit of living on campus is definitely having so many student resources so readily available.

Wendy McCutchen is the Ad Representative at the Cooper Point Journal.

Your Newspaper

By Charlie Daugherty

The Cooper Point Journal is not your average school newspaper. When I say that it's not in the gimmicky catch phrase people use

to trick you into thinking they're better or original, it truly is a thing of its own.

First off and most confusingly, the CPJ is not a newspaper in the way it is staffed. There isn't a crew of reporters trying to get their degrees in journalism, representing the voice of Evergreen. The CPJ is completely submission based, meaning students, staff, faculty, or community members create all the content. Yes, it is called a newspaper but it is designed to work as a forum, where everyone can contribute and participate. And yes, I am a reporter working for the newspaper, but all of your submissions have priority over mine. Let me tell you I would be more than happy to be turned down, knowing that enough people submitted content.

To help you achieve this goal of owning the paper I'd like to clear up some misunderstandings about the CPJ.

The CPJ doesn't print everything you throw at it. As much as it has been said in the past, "We accept everything" isn't always true. Sure, everything can go into the paper, but some speech isn't protected, which could cause the CPJ to be sued or even terminated. The decision of whether something is printed ultimately comes down to the Editor in Chief and no one else. Using a fake name or turning in content anonymously is one way your submissions won't get printed.

This I can understand to be a huge gripe to some people. There are authors in history that used a synonym, or fake identity in dire times and accomplished much more than they could have with their real identity. If anything, the rule is there so people will be accountable for their words. If you're as shy as I was, I can understand why having your name next to your words in public can be intimidating. If you want, there is always the CPJ staff or the writing center to help you clarify what you want to say. There is too much to argue, discuss, or tell to leave these pages blank.

One more thing that usually won't be printed is fiction. Evergreen has another publication dedicated to fiction called Slightly West. However, things like comics, art, photos and poetry are acceptable submissions.

There is plenty more to know about the CPJ, and to be honest, for the CPJ staff to learn. That's why there are weekly meetings, which all students are invited to join. This community and more importantly the students desperately need a voice and a say in what goes on around here and this is the place to do it.

The paper is your voice if you make it!

The quantity and quality of content is directly related to your contributions. If you have any questions are would like to contribute contact the CPJ at cpj@evergreen.edu or come up to the office in CAB 316.

Charlie Daugherty is a sophomore enrolled in Images of Women: Changes in Japanese Literature.



Start your newspaper off right with a side of info!

Hey kids! Welcome your friendly school newspaper, affectionately known as the CPJ. This is not just your average school paper - any student can contribute to the content and production. No hoity-toity too good-for-you newspaper on this campus. Students actually have priority over the staff when it comes to what is printed. The Evergreen community at large decides the direction and tone of the paper, based on their submissions. You'll find new and varying voices in the paper week to week.

Whether you're into writing articles, drawing a comic, advertising or taking photos, the CPJ has a place for you. Through submitting your work, not only will you interact with your editor, making you a stronger writer, but you also have the unique opportunity to introduce yourself to the Evergreen community and make your views known. You can send an article by e-mail to cpj@evergreen.edu without even putting on pants to leave your bedroom!

The CPJ is staffed by students whose goal is to learn by producing a weekly newspaper. These aren't just folks focusing on journalism - people studying a wide range of subjects work on the CPJ to strengthen their community and grow academically. Experience is not necessary, just a willingness to learn and be an active part of our fabulous school.

How to get involved

There are many levels of involvement with the CPJ. The primary goal at every level is to learn.

COME TO A MEETING

Here are all the important regular meetings as listed below in weekly events.

Paper Critique

Give feedback about the current weeks paper

Student Group Meeting

Need something to write about or have a story idea to share? Just want to find out what is going on for the CPJ that week? This meetings for you!

Thursday Forum

Interactive discussions about such issues as Journalism ethics and the first amendment

CONTRIBUTORS

Any Evergreen student can contribute to the CPJ newspaper. Submissions by students are always first priority. Students who wish to contribute on a regular basis, such as with a column, should consult with the editor in chief and the managing editor.

MEMBERS

Becoming a member of the CPJ student group is as simple as attending meetings on a regular basis and participating in activities that support the organization, such as fundraising and passing out the newspaper.

POSITIONS OF EXTRA RESPONSIBILITY

Members who wish to become more involved at the CPJ apply for positions of extra responsibility. Positions range from section coordinator to ad/page designer, and from copy editor to assistant business manager. All students in positions of extra responsibility are first and foremost members of the CPJ student group.

Weekly Events at the CPJ

Monday	Tuesday	Wednesday	Thursday	Friday
Meetings:	<u>Design Meeting</u>	Production night	<u>Thursday Forum</u>	OFF DAY
<u>Paper Critique</u>	5-pm		4-pm	
4-pm				
<u>Student Group Meeting</u>	This meeting is for getting a rough outline of how the paper will look and to address any last minute changes.	<u>Coordinator Meeting</u>	Thursday meetings are reserved for discussion on Journalism and Ethics	STORY WRITTING
5-pm		This meeting is for section coordinators to prepare for the upcoming week.		Learning evals due by 12-pm
<u>Content Meeting</u>				
5:30-pm				
<u>All Content Due!!</u>				
Office hours:				

Suggested types of contributions

ARTS AND ENTERTAINMENT

Reviews of books, concerts, music, art galleries and movies, as well as poetry and short pieces of creative writing.

BREIFS

Reminders and announcements about things happening on campus, such as building closures, scholarship deadlines, special events, etc.

CALENDAR

Short announcements for upcoming events or student activity meetings.

COMICS

Make a comic using any medium and submit

LETTERS AND OPINIONS

Letters or articles that give your perspective about a certain issue.

NEWS

Current, factual accounts of events, topics and people, relevant to Evergreen students.

PHOTOS

Photo submissions can be part of an article, or stand-alone. They can be submitted in digital or print form.

SEEPAGE

Visual art for the back page of the paper.

SPORTS

Article about Evergreen sports and athletes on campus and the recreational interests of Evergreen students.

STUDENT VOICE

Articles about student groups, student; planned community activities, and unique student perspectives.

How to Submit a Comic

The deadline for comics is **Fridays at 3 p.m.**

Comics can be submitted in person at **CAB 316** or by email at cpj@evergreen.edu.

EMAIL

All emails should be sent to cpj@evergreen.edu.

Attach your comics as a **JPG file**. Images must be their actual size: we will not resize them.

Please include the following information in your email:

- full name
- phone and email
- what issue your submission is for

IN PERSON

Drop off your comic in our office in **CAB 316**.

Every comic submitted in person must have a submission form attached, with your name and contact information.

Forms are available in **CAB 316**.

When providing your contact information, please keep in mind that fake "pen" names are not accepted. This is for accountability issues, and to prevent comics fraud.

Printing Standards

VISUAL CLARITY

You must type, draw or write in dark ink that is big enough to read. If the text or the picture is too light or too small, we'll ask you to redo it so that people can read it.

CONTENT

Comic submissions are subject to the same publication standards as written work. If the comic is unclear or appears to be expression that is not protected by the First Amendment, the comics coordinator will consult with the editor-in-chief and managing editor and contact the contributor so that the issue can be resolved.

SIZE

- **Maximum size: 38 square inches**
This is to preserve equity of space in the comics section.
- **Maximum width: 9.5 inches**
- **Maximum height: 15.5 inches**

The CPJ is printed 9.5 x 15.5 inches. Please do not submit comics that are wider than 9.5 inches, or longer than 15.5 inches, as we do not resize them.

Open Positions

These are currently all of the open positions to be filled. The most significantly needed positions are in bold face and underlined.

A+E coordinator
Briefs coordinator
Calendar coordinator
Comics coordinator
Copy editor
Letters + opinions coordinator
News coordinator
See page coordinator
Sports coordinator
Page 2 coordinator
Reporter
Designer
Distribution
Circulation

For info on position descriptions visit us in CAB 316 or contact us at cpj@evergreen.edu

Don't know what to write?

So hopefully by now you understand that the point of having this newspaper around is that it gives students the chance to reach out and talk to one another via the good old fashioned printed page.

No doubt right now some readers are thinking, "well that's nice, that you all welcome contributions, but I don't have anything to say right now." Well, I say that's obviously untrue!

Have you interviewed that bus driver who drives you to school every morning? Have you tried to discover whom the financial backers for Washington's I-933 are yet? Maybe that sort of thing doesn't interest you. You could write up a music review, or a book review (anyone read those anymore?). Hell, how about a faculty or a program review?

It seems like common sense to say that people will inevitably accumulate a large body of opinions over their lifetimes. What are your opinions? Or, perhaps more practically, how do you do home economics?

I don't know about other people, but I could certainly use another tasty, cheap recipe. And right now I have couple of holes in this great sweater I'm wearing, wondering what's the best way to patch them?

When you decide to contribute here, I'm betting that there will be at least one reader who benefits from your words. I think you should consider it.

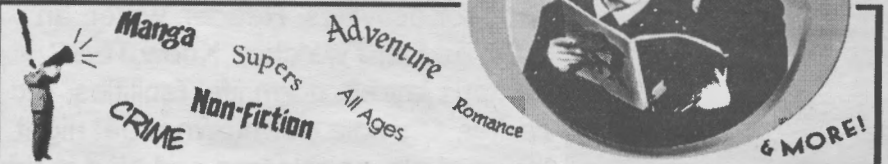
Danger Room Comics

BACK TO SCHOOL DEAL!

- ⇒ Buy one book and get 50% off another of equal or lesser value - with this special ad!
(one coupon per customer, per purchase please)

COUPON EXPIRES Nov. 1st, 2006

Downtown ~ Corner of 4th & Columbia
dangerroomcomics.com 705.3050



ALL - STUDENT CONVOCATION



Friday September 22
2 P.M. at the Longhouse

Convocation is Evergreen's celebration marking the beginning of the academic year. Join students, faculty and staff for festivities, ice cream and door prizes.

♪ Listen for the call to Convocation starting at 1:30 throughout the campus.

2006 Geoduck Orientation Guides

These exemplary “Greeners” are continuing students who assist new students, families and friends throughout Orientation Week. Geoduck Orientation Guides can be identified by their t-shirts, and can be found at the Orientation Guides Information Table in Red Square.

Ask them anything!



Name: Max Bauval
Hometown: Honolulu, Hawaii
Academic Interests: Visual arts, psychology and ethics
Areas of Expertise: Student housing and TESC bookstore



Name: Carmella Fleming
Hometown: Fairfield, Iowa
Academic Interests: Gender studies, feminist theory and cultural studies
Areas of Expertise: Student housing, social sciences, participating in consciousness-raising events, and working on campus in the costume shop. Third year student.



Name: Sierra Blakely
Hometown: St. Paul, Minnesota
Academic Interests: Environmental science, outdoor ed. & leadership
Areas of Expertise: Sciences, sailing, Women's Resource Center and Vagina Monologues, local outdoor activities, TOP Program, on-campus housing activities, downtown Olympia, and TESC organic farm.
Hobbies: Knitting, glass bead making, hiking and camping.



Name: Bennett Hart
Hometown: Bellingham, WA
Academic Interests: Political sci., community development, sustainability, economics, literature, art and art history.
Areas of Expertise: TESC President's Office, academic contracts, volunteering, downtown Olympia, parks, day trips, and Seattle. Study abroad program.
Hobbies: Running, travel, painting and volunteering.



Name: Amber Carver
Hometown: Denton, Texas
Academic Interests: Journalism and environmental justice
Areas of Expertise: Live in the Glen. Outdoor activities. Reader, writer, an artist and bird watcher. Know TESC campus layout, dorm life, facilities, rec center, Olympia downtown area, night life, and places to camp and hike in the Puget Sound area.



Name: Molly Iiams-Hauser
Hometown: Bothell, WA
Academic Interests: Psychology-addiction based, history and sociology
Areas of Expertise: Ordering books and everything else you'll need to know about the college's bookstore and on-campus housing.



Name: Kit Crosland
Hometown: Vancouver, WA
Academic Interests: Society, politics and social change, law, gender studies and Spanish.
Areas of Expertise: All of campus except lab buildings & art annex. Housing, facilities, food. Good places to eat off campus.
Hobbies: Making movies, playing trumpet, and making geoduck jokes.



Name: Jacqueline Koala
Hometown: Seattle, WA
Academic Interests: Psychology, social work and art
Areas of Expertise: Clubs around campus and in the community.



Name: Elizabeth LaPan
Hometown: Santa Fe, New Mexico
Academic Interests: Women's studies, health care, ethnobotany, political science and globalization.
Areas of Expertise: Olympia community, Evergreen woods and the Olympic Mountains and surrounding area camping.



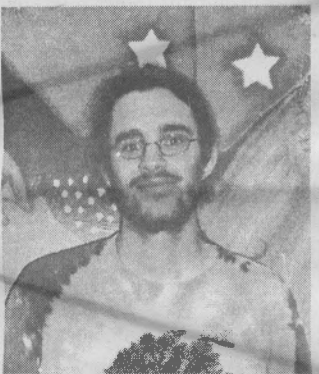
Name: William "Memo" Plazas
Hometown: Bogotá, Columbia, and Kamuela, Hawaii
Academic Interests: Political science and counseling
Areas of Expertise: Veteran's benefits, off campus housing, soccer, National Guard.



Name: Asenka Miller
Hometown:
Academic Interests: Communication, public administration, public relations, business, law and media.
Areas of Expertise: Campus, library and administration building, Sem II and media services, the Longhouse, the art annex, the Rec Center and on-campus student housing. Familiar with most of the Intercity Transit routes. Involved with student government.
Hobbies: Filming and writing.



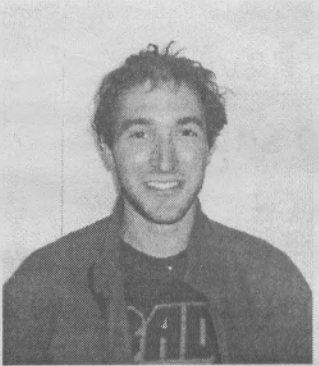
Name: Suzanne Reed
Hometown: Modesto, CA
Academic Interests: Studio art, art history, chemistry and psychology.
Areas of Expertise: Arts annex, labs, COMM building, library, Olympia housing, good eats in Olympia, community activism, elementary schools.



Name: Jesse Miller
Hometown: Lawrence, Kansas
Academic Interests: Botany, ecology, sustainable agriculture, history, and Native American Studies.
Areas of Expertise: Woods and beach on campus. Organic Farm. Olympia area and surroundings.



Name: Angela Robinson
Hometown: Chehalis, WA
Academic Interests: Ecology, natural resources, general chemistry
Areas of Expertise: Lewis County history, off campus housing, science is my full-time passion.



Name: Adam November
Hometown: Jericho, New York
Academic Interests: Public policy and sustainable agriculture.
Areas of Expertise: Busses to Seattle, hiking around Seattle, picking classes that are interesting, involvement with student activities, student elections, and off campus Olympia Food Co-op. Also Master Recycler.



Name: Ryan Stephens
Hometown: Columbus, Ohio
Academic Interests: Psychology and people
Areas of Expertise: Student activities, CRC, east and west sides of Olympia and downtown area. Mt. Rainier and Olympic National Parks. Coordinator for inter-faith group, Common Bread.



Name: Maggie Philipsborn
Hometown: Chicago (Evanston), Illinois
Academic Interests: Environmental studies, political economy and Women's Studies
Areas of Expertise: Local food (farms, GRUB, etc.), student activities, and hiking trails around the peninsula. Synergy coordinator and S&A Productions worker.



Name: Chelsea Whitaker
Hometown: Healdsburg, California
Academic Interests: Political science, law and Japanese
Areas of Expertise: SEM II building, CAB building, student housing, Olympia bus routes and Evergreen Queer Alliance.
Hobbies: Writing, martial arts and activism.

Expressing yourself in other ways: Evergreen's athletic programs

By Sean Paull

So I'm sure you've all heard about Evergreen's academic offerings and the way an Evergreen education makes you stand out from the rest, but how much do you know about the athletic offerings at Evergreen? Although not often mentioned in conversations about the college, many students bring their dedication from the classroom out to the field/court/water and give it their all in the name of the Geoducks.

In the field of intercollegiate athletics, a number of teams are already competing. The women's and men's soccer teams started their seasons in August and are honing their skills for the Cascade Conference. A number of upcoming games for both teams are away, but the men will be playing on their home turf on Sept. 28 against Cascade College at 4 p.m. and the women will be back at Oly on Oct. 6 to play Corban College at 3 p.m.

Cross-country recently posted strong results for both men and women at the first event of the season on Sept. 9, the Northwest University Invitational. With both teams posting finishers in the top five and the men's team placing number two overall, you can expect strong showings from the cross country program this year. The teams will be traveling around quite a bit, but their next events will be close to home as they compete in the UW Sundodger Invitational on Sept. 16 at 9 a.m. in Seattle and the SMC Invitational on Sept. 23 at 10 a.m. in Lacey.

Lastly, women's volleyball has already

started conference play in the Cascade Conference, holding a record of 1-2 so far. Their upcoming home games are Sept. 16 at 7 p.m. against Oregon Tech and Sept. 19 at 7 p.m. against Puget Sound Christian College.

Later in the year, you can expect to see women's and men's basketball tearing it up in the courts when the weather gets cold outside. Though both teams are coming off hard seasons last year, there's nothing to stop them from tearing it up this year. Look for them to be playing in the CRC come November.

Starting in January and continuing into the sunny weather, Evergreen's Track and Field team will be strutting their stuff around the region. Coming off an amazing season last year with many personal and school records broken, there's no reason not to expect the same kind of performance this year.

As far as club sports are concerned, Evergreen has a number of offerings. Evergreen's kung fu team has consistently done well at tournaments in the area and maintains a high level of excellence in their training. Evergreen crew had one of their best showings last year and they are working hard throughout the year training for regattas. Evergreen's baseball team won for the first time last year and hopefully will see more successes this year. Finally, Evergreen wrestling maintains a solid presence on the mats and will grapple and pin their way to victory. If you're interested in any of these offerings, stop by the front desk of the CRC

to find out more.

Of course, if you don't want to commit to being on an organized team and just want to have a good time, Evergreen has a host of intramural sports. There's soccer in the field on Tuesdays and Thursdays from 3 to 5 p.m., basketball in the CRC gym on Mondays from 3 to 5 p.m., flag football in the field on Sundays from 3 to 5 p.m., and a variety of offerings at Late Night in the CRC, Monday through Thursday from 9:30 to 11:30 p.m.

So if you want to get out there and be active or simply watch others give it their all, check out these Greener opportunities. Go Geoducks go!

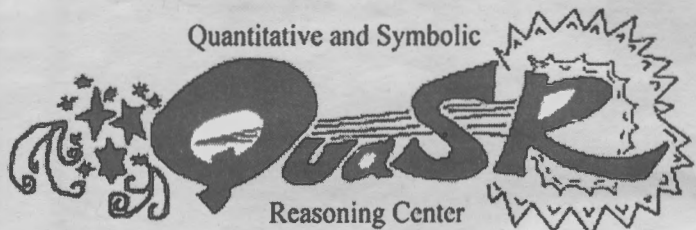
Sean Paull is a senior enrolled in Arabic and an internship. He is also the managing editor for the Cooper Point Journal and can answer any questions you have about the group at (360) 867-6213.



Photo by Erik Gibson-Snyder

Speedy, Evergreen's geoduck mascot, struts his stuff at one of last year's basketball games. Look for him at upcoming shows and hope he does some back flips.

Centers for Active Student Learning



Any Student, Any Program,
Any Level

Monday-Thursday 11-8
Friday 11-4
Saturday-Sunday 12-5



Because you have
something to say

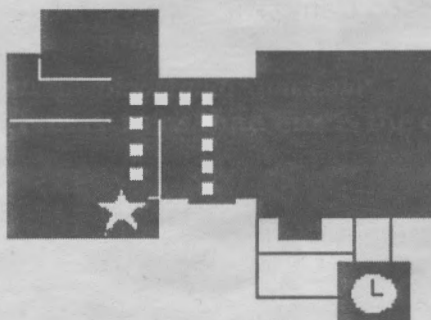
Tutors are available for:

- Mathematics
- Chemistry
- Biology
- Physics
- Computer Science
- Statistics
- Drafts
- Evaluations
- Seminar Papers
- Essays
- ESL
- Creative Writing
- Research
- Formatting

Drop in Tutoring
One-on-One Peer Tutoring
Homework Help
Resource library
Helpful Handouts

www.evergreen.edu/mathcenter
360-867-5547

Library 2304



Red Square

We are located on the second floor of
the Library Building, past the library
reference desk in room 2304.

www.evergreen.edu/writingcenter
360-867-6420

BATICAN

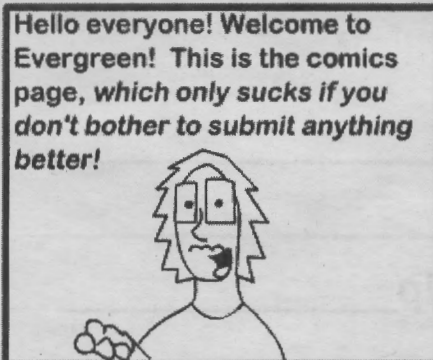
CHARLIE DAUGHERTY



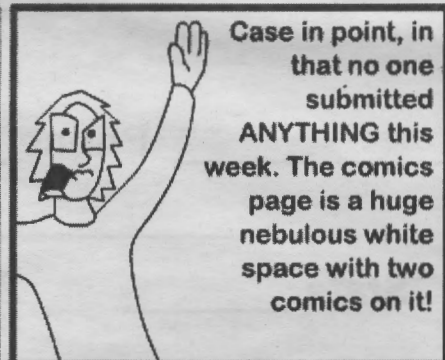
I know for a fact that half the Evergreen population intends to become a famous artist or writer. Why are you not submitting? It's free publishing! I can guarantee you won't get that again anytime soon.

Look at poor Charlie up there, I'm his only reinforcement! The worst thing is me and Charlie are both staff at the CPJ. That's NOT the way it's supposed to work! We seek student submissions!

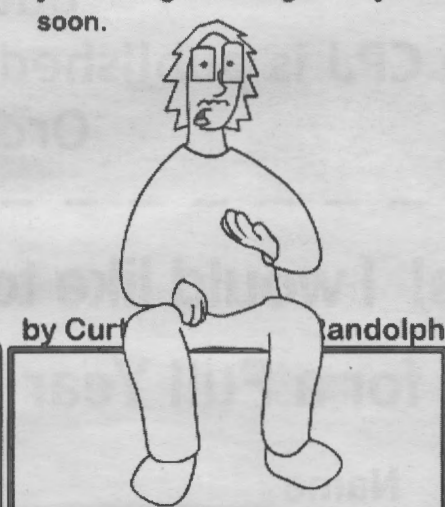
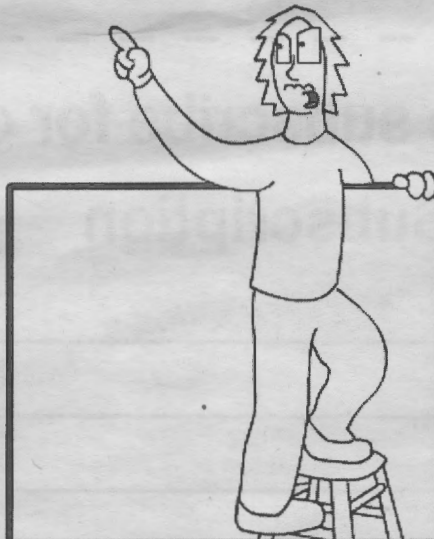
Kibitz



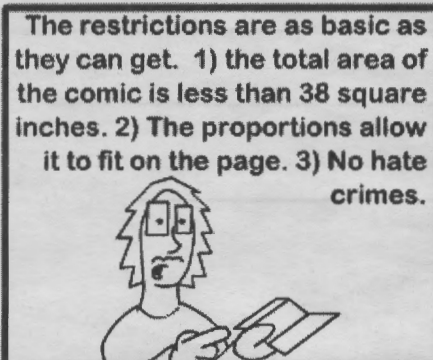
Hello everyone! Welcome to Evergreen! This is the comics page, which only sucks if you don't bother to submit anything better!



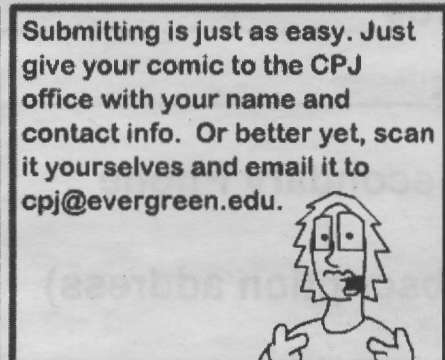
Case in point, in that no one submitted ANYTHING this week. The comics page is a huge nebulous white space with two comics on it!



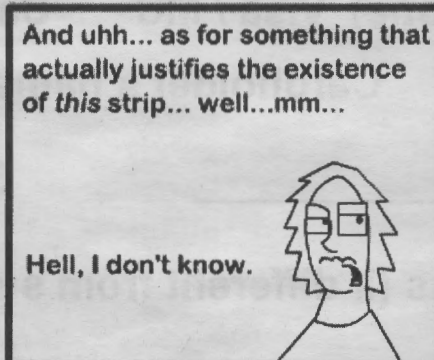
by Curt Randolph



The restrictions are as basic as they can get. 1) the total area of the comic is less than 38 square inches. 2) The proportions allow it to fit on the page. 3) No hate crimes.

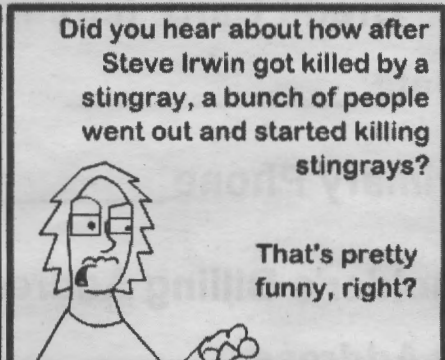


Submitting is just as easy. Just give your comic to the CPJ office with your name and contact info. Or better yet, scan it yourselves and email it to cpj@evergreen.edu.



And uhh... as for something that actually justifies the existence of this strip... well...mm...

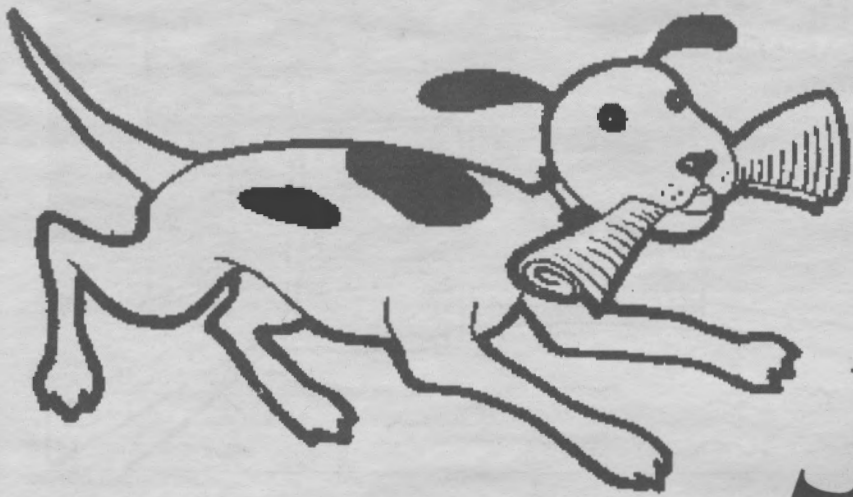
Hell, I don't know.



Did you hear about how after Steve Irwin got killed by a stingray, a bunch of people went out and started killing stingrays?

That's pretty funny, right?

Don't Forget To Subscribe To: COOPER POINT JOURNAL



Let us be your source of information about the Evergreen Community.

By receiving the CPJ at home, you can keep up to date with what issues are important to Evergreen students. The CPJ is very different from other college newspapers. Any and every student can contribute content (an opinion piece, a comic, a news story, a photo, etc.) and the CPJ staff compiles it into a newspaper each week. Again, very different but truly representative of students.

The CPJ is published Thursdays during Fall, Winter and Spring quarters. Order now to start receiving the CPJ!

Yes! I would like to subscribe for one full year, a total of 28 issues!
\$35 for a Full Year Subscription

Name _____ Phone _____

Street Address _____

City _____ State _____ Zip _____

Credit Card: (circle one) Visa / MC Card# _____

Exp Date: _____ Cardholder's name: _____

Primary Phone _____ Secondary Phone _____

Cardholder's Billing Address (if different from subscription address)

Street Address _____

City _____ State _____ Zip _____

Cut out this coupon and mail it with payment to: **Cooper Point Journal**
 (Make checks payable to - Cooper Point Journal) **The Evergreen State College, CAB 316**
Olympia, WA 98505