

Graduation Weekend

Super Saturday, the college's second annual community-wide celebration, featured live entertainment on three stages, exhibits and displays by more than 60 artists and craftsmen from throughout southern Puget Sound, children's activities, and athletic competition in baseball, soccer, skateboarding, roller skating and bicycle racing, and "the ultimate" frisbee contest.

Special events highlighting the day included the arrival of three parachutists dropped from a small plane right over the central campus plaza, the appearance of the Hamms bear, who delighted youngsters all day long with his friendly antics, jugglers and magicians performing throughout campus, demonstrations by campus artists, a treasured exhibit of antique cars, and performances by two marching units, the Olympia Highlanders Bagpipe Band and the Tumwater High School Band and Drill Team.

Rain forced most of the events to be moved inside, where standing-room-only crowds enjoyed music by the Red Kelly Jazz Ensemble, the Johnny Lewis Review, the Olympia Chapter of the Sweet Adelines, the Olympia Kitchen Band, and many more. Food vendors fed long lines of hungry guests as artists and craftsmen sold their wares and children rode horses, learned games, enjoyed free cartoons, and had their faces painted for their afternoon parade.

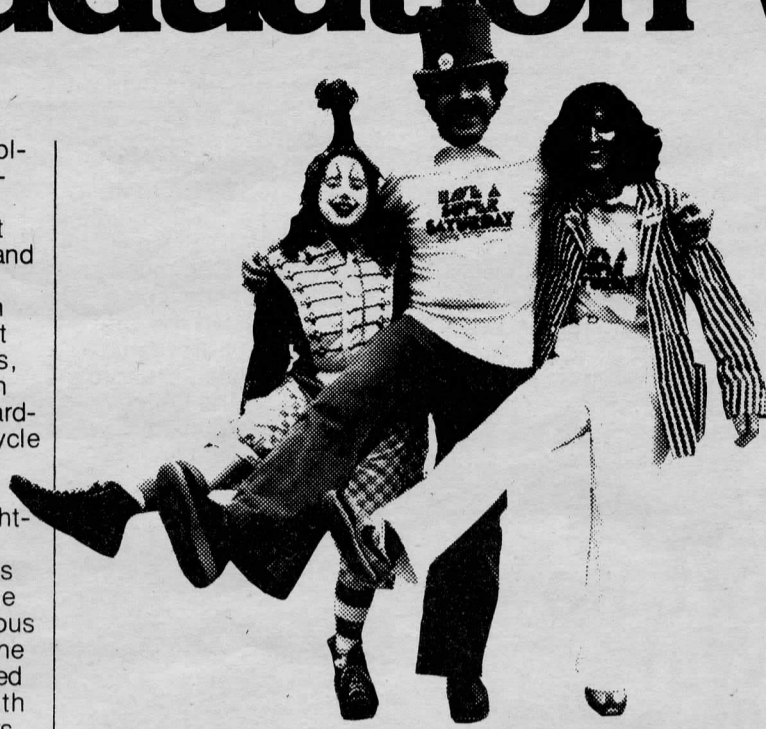
New to Super Saturday this year was the highly popular Beer Garden, located atop the library building and filled with musical entertainment and adult beverages. Campus alums and community volunteers staffed the garden, where guests enjoyed a respite from the hustle and bustle of the central plaza.

Rain continued to dampen the campus on Sunday morning so, for the first time in college history, graduation exercises were conducted in the recreation pavilion, where 1600 people filled every chair and aisle to watch more than 400 members of the Class of 1980 receive their diplomas.

New graduates Judy Guykema of Olympia and Patti Dobrowolski of Los Angeles shared the speakers' platform with Evergreen President Dan Evans, Alumni Association President Bob Butts, Assistant Academic Dean York Wong, and special guest speaker William Stafford, a renowned Pacific Northwest poet.

The ceremony concluded with the Geoduck fight song and presentation of the traditional evergreen seedlings, donated once again by the Weyerhaeuser Company and the Department of Natural Resources.

Two additional graduation ceremonies concluded the 1979-80 academic year as seven students celebrated their commencement in Port Angeles on June 15 and 21 students enjoyed graduation exercises at the Vancouver campus on June 14.



Kicking up their heels in the midst of their highly successful spring celebration are (from left) Gwen Garfinkle, who organized the children's activities; Larry Stenberg, Super Saturday Co-chairman; and Diane deMoulin, who orchestrated many of the special events, including the breath-taking parachutists' landing.

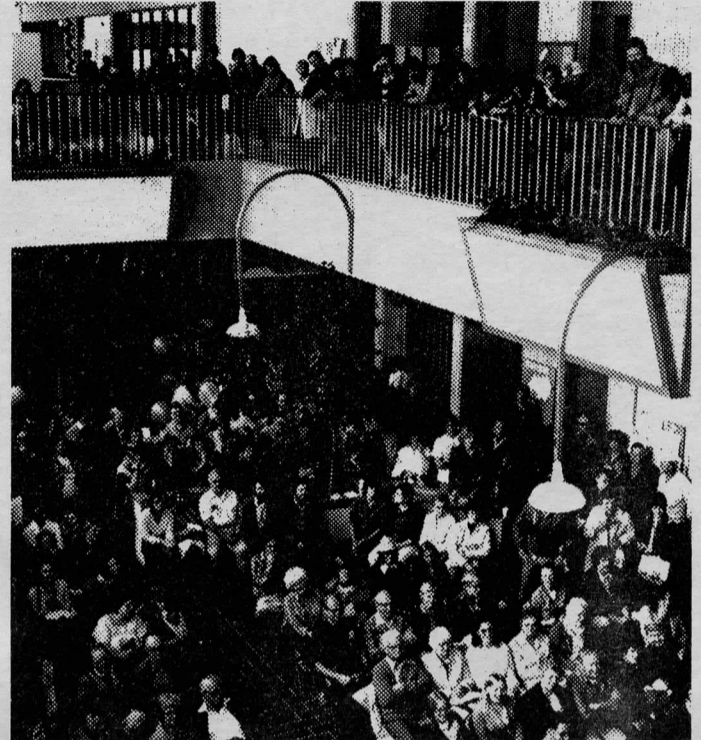


Graduating senior Cindy Goodwin receives her traditional Evergreen seedling from Alumni Coordinator Bonnie Marie.



Olympia graduate Judy Guykema describes her efforts to receive her bachelor of arts degree before her fortieth birthday. She made it—with three weeks to spare—she told a delighted audience, which included a substantial number of new alums over the age of 30.

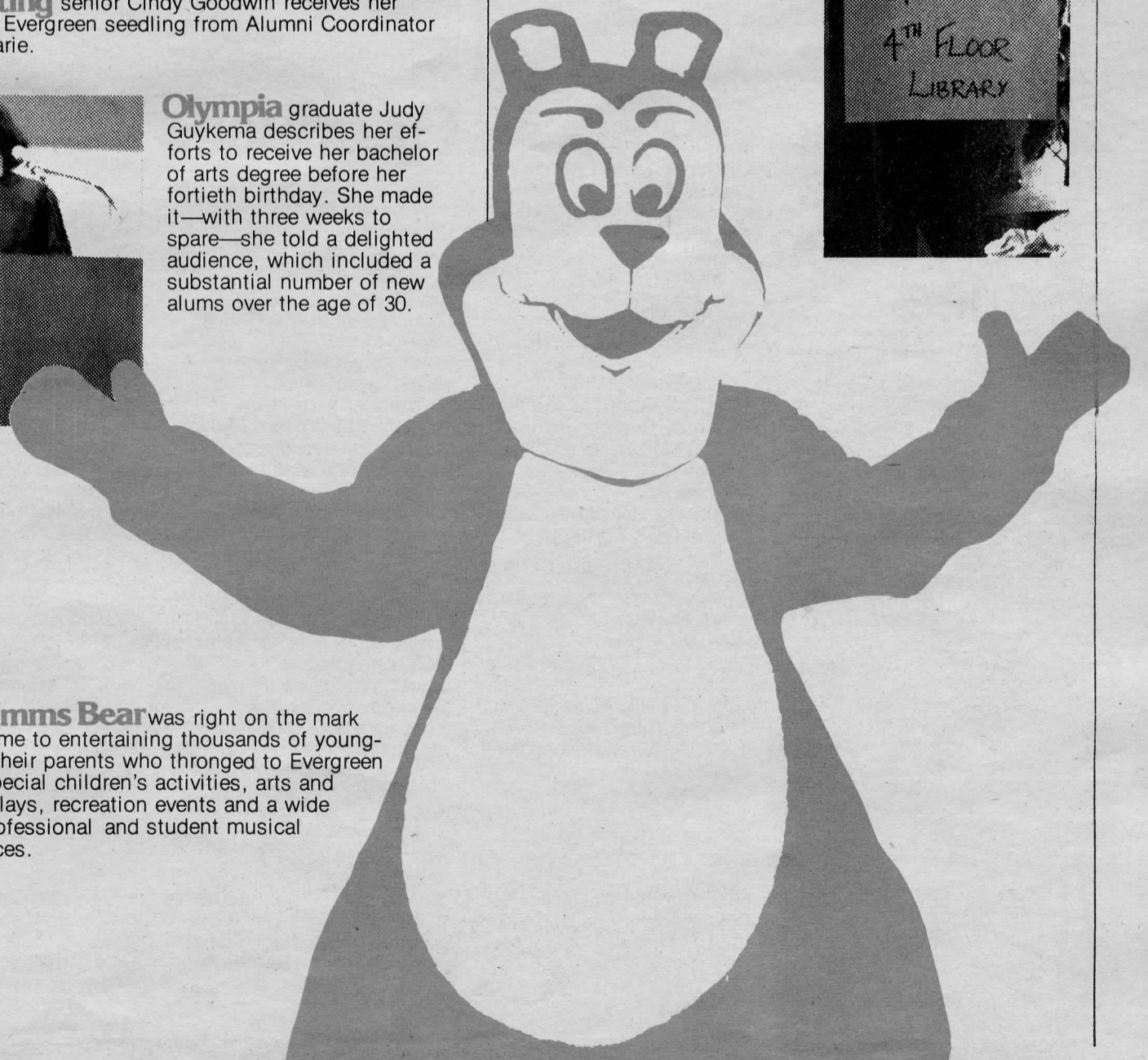
Crowds like these were evident in front of all three stages throughout Super Saturday. This audience didn't want to miss one minute of the Red Kelly Jazz Ensemble, which later in the day combined talents with the Evergreen Jazz Ensemble for a second toe-tapping concert.



Richard Alexander faculty member and newly appointed assistant academic dean, served as a walking advertisement for the delights of the Beer Garden, an adults-only beverage spot which featured a variety of musical entertainment throughout Super Saturday.



The Hamms Bear was right on the mark when it came to entertaining thousands of youngsters and their parents who thronged to Evergreen to enjoy special children's activities, arts and crafts displays, recreation events and a wide array of professional and student musical performances.



New Administrators Named

Six new administrative appointments will take effect this summer as the college prepares to launch its tenth academic year.

Richard Schwartz, vice chancellor for business affairs at the University of Michigan's Dearborn campus, has been named Evergreen's new Vice President for Business. He will fill the post vacated in February by the death of founding Vice President Dean Clabaugh. The appointment is effective September 1, when Schwartz will assume responsibilities

from employee relations director Rita Cooper, who filled the position of vice president on an acting basis.

Provost Byron Youtz has appointed Dr. John Perkins, a faculty biologist in the School of Interdisciplinary Studies at Miami University in Ohio, to the four-year post of senior academic dean, effective August 1. Perkins, who this past year has served as a visiting research associate in the Division of Biological Control at the University of California at Berkeley, replaces Dr. Will Humphreys,

who intends to return to the faculty this fall after four years as a senior dean.

Also new to the deanery this fall will be Evergreen faculty member Dr. Richard Alexander, who has accepted a two-year appointment by Provost Youtz to serve as assistant academic dean. Alexander was hired in 1970 as a member of Evergreen's original planning faculty in English and literature. Last fall he returned to campus after completing a six-month assignment as an exchange professor in English at Kobe

University of Commerce in Japan. He replaces Jeanne Hahn, who is also returning to the faculty this fall.

Other new administrative appointments include: Dr. Guy Adams, named to a one-year term as director of the master's degree program in public administration, which begins this fall; Steve Hunter, appointed by Community Relations Director Les Eldridge to head the Office of Institutional Research; and Joyce Weston, a former counselor in the Office of Cooperative Education, who

has accepted a two-year appointment as coordinator of the Office of Career Planning and Placement. Hunter, a 1979 Evergreen graduate, is the first full-time director of the newly created research office. Weston, who graduated from Evergreen in 1976, replaces Gail Martin, who this summer begins a two-year leave to complete her doctorate at Columbia University.



Evergreen Artists Win Awards

Catherine Thompson, "Modern Beauty with Image in Sake Cup."

Three Evergreen graduates have won top honors in an international contest to "explore the extent and significance of the emergence of glass as a new art medium." The contest, sponsored by *Glass Magazine* of Portland, Oregon, drew more than 4,000 entries and resulted in selection of 15 winners from England, Canada and the United States. Twenty percent of the awards went to Evergreen alums. Graduates Ken Hill, Bill Hillman and Catherine Thompson placed seventh, ninth and tenth, respectively, winning both financial awards and publication of their works in a full-color magazine, *Glass: Fragile Art*. All three alums are currently employed at Mansion Glass of Olympia.

Evergreen faculty member Earle McNeil is also in the art news this week. McNeil, who took Spring Quarter leave, has opened a small business in woodworking. The results of his creative efforts go on exhibit July 4-August 1 at Childhood's End Gallery in downtown Olympia. Another of his new pieces, a sculptured work in wood and brass, is on display now through July 15 at the 27th Annual

Southwest Washington Artists' Juried Show at the State Capitol Museum. The piece, says McNeil, "represents an entirely new area of expression for me."

Evergreen photographers have also staked their claim to fame this month. Five students in Paul Sparks' Spring Quarter 2-D art group contract entered "Photography '80," a statewide competition sponsored by the Tacoma Art Museum. All five have had their works accepted for the exhibit, which runs June 18 through July 26. The museum accepted two pieces by Bonnie Moonchild, four by Randy Jeter, two by Pam Corwin, and three each by Russell Battaglia and Bob Hayes. In addition, the Evergreen students took two of the four first prizes, which will mean one-person shows next fall for Moonchild and Jeter.

Bonnie Moonchild will also be a guest lecturer on subjective photography at Evergreen's 1980 Summer Photo Institute.

Cal Tjader Headlines Expression Series

Jazz musicians Cal Tjader and Art Pepper, two professional dance companies, two local theatrical groups and a Canadian theater company will offer 20 separate, on-campus performances this coming year as part of Evergreen Expressions, the college's second annual performing arts series.

October 10-12; 17-19
"Take a Card, Any Card."
Written by Martin Kimeldorf, directed by Richard Nesbitt and produced in conjunction with the Thurston County Association for Retarded Citizens.

October 28
Cal Tjader and his sextet.

December 4-7; 11-14
"Charley's Aunt," a comedy written by Brandon Thomas and directed by Andre Tsai.

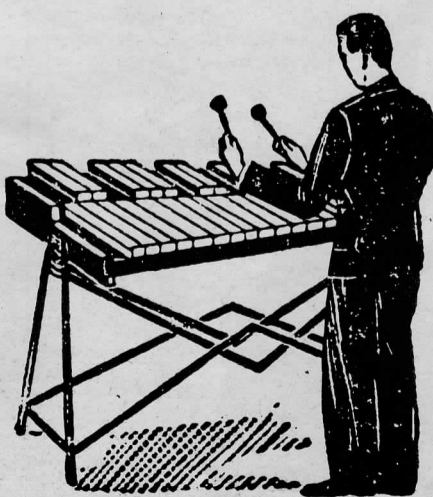
January 24
Northwest Repertory Dance Troupe from Portland.

January 31
Art Pepper and his quintet.

February 6
Tandy Beal Dance Company.

April 4
"Piaf!" A musical based on the life of French entertainer Edith Piaf; performed by a Canadian theatrical troupe.

Complete details on the Evergreen Expressions series will be available after September 1 through the Office of College Relations, Library 3114.



Geoducks Wrap Up

Evergreen's premiere year of involvement in intercollegiate athletics saw victories, defeats, innovation, enthusiasm, and our share of controversy.

The year started out with a team of men soccer players eager to test their mettle against other college teams for the first time in the history of Evergreen. Midway through the season, controversy mushroomed over the dismissal of the men's coach. "We are having a winning season," says Pete Steilberg, athletic director, "and then the 'win at all costs' attitude became intolerable. Ineligible players and coaches just can't play in sanctioned college contests. We received more press coverage over firing our soccer coach than we would have received for a prestigious academic achievement—like our recent accreditation report—but we had to risk the 'flak' to insure that athletics at Evergreen wasn't starting out on the wrong track." The soccer players pulled together with a cooperative coaching effort and finished a tough season with a respectable three wins, four losses, and one tie.

Meanwhile, back at the swimming pool, coach Don Martin was putting the first Evergreen swim team through its laps. Every meet produced personal improvement for the men and women athletes. The inexperienced but talented squad and their coach laid the groundwork for an outstanding competitive swim program at Evergreen. The men's team boasted an impressive 3-3 split in their first season and the women's team held up with spirit and dedication for a 1-and-6 season.

This spring the women's soccer team kicked and passed their way to a Southwest Washington Soccer Association championship with an impressive record of 11 wins and one loss. Coached by ex-Evergreen club star and alumnus Jacques Zimicki, and donning new warm-up uniforms donated by local boosters, the women's team exhibited classic team spirit and pride. As one player put it, "playing sports well is a cooperative process of learning and growing together in which your interactions with others and your intensity—your level of involvement—are vital. That's very Evergreen!"

by Jan Lambertz

What is the Evergreen formula for athletics? You meet daily with your "group contract" (team). Then you "seminar" (strategy session) to determine a sequence of "facilitative efforts" (game plan) to outwit and outmaneuver your opponents. When you score, you receive an "Evergreen unit" (point). And when your "module" (season) is over you will have had a true learning experience.

Next year's plans include the addition of men's and women's cross-country running and tennis. The statement of philosophy framed by the Athletic Advisory Board stresses athletics at Evergreen as an integral part of the total institution which must be dedicated to the growth and education of the individual. Our goal is to continue to build the athletic program in keeping with this philosophy and the tradition of Evergreen.

Jan Lambertz is Evergreen's assistant director of recreation and athletics.

AlumNews

Alumni
Reunion
September
5-7

Your Chance To....

...stay in the dorms (ah, nostalgia!), dine at SAGA, (they've improved—really!), attend a seminar, view alumni craftwork, see the new Organic Farmhouse, buy an Alumni Association T-shirt and limited edition directory, renew acquaintances, and visit your favorite Olympia watering hole, all during the first weekend of September.

Those are just a few of the activities we have planned for the Alumni Reunion and we're sure spontaneity and creativity will also take over as people arrive on campus. Here's the preliminary agenda. We'll provide more detail in a separate mailing:

Friday, September 5

7:00-10:00 p.m. Check into dorms, registration, informal reception

Saturday, September 6

- 8:00- 9:00 a.m. Continental breakfast
- 9:00-10:30 a.m. Workshops
- 10:30-11:00 a.m. Break and/or tour of the Communications Building
- 11:00-12:30 p.m. Seminars
- 12:30- 1:30 p.m. Lunch
- 1:30- 4:30 p.m. Annual business meeting and election of officers and Board of Directors
- 4:30- 5:00 p.m. Break
- 5:00- 6:00 p.m. Evergreen in the '80s
- 6:00- 6:30 p.m. You're on your own
- 6:30- 7:00 p.m. Cocktails
- 7:00- 8:00 p.m. Buffet dinner
- 8:00-10:00 p.m. Jazz in Dorm A Corner or adjourn to favorite local night spot

Sunday, September 7

- 9:00-10:00 a.m. Walk to Organic Farm for coffee and doughnuts
- 10:30 a.m.-Noon Committee meetings and interest-area brainstorming sessions
- Noon Head for home

Most of our activities will take place in the Communications Building, the most recent major structure on campus, and one that most of you haven't had the opportunity to see. It's a well-equipped and versatile facility. We'll give you an in-depth tour.

The Housing Office has been most cooperative in working with us to provide accommodations in the residence halls at a very good price—\$6.00 single, \$4.00 double per night. We'll provide additional details in the reunion mailing.

This should be an action-packed weekend, complete with laughter, hugs, philosophizing, bragging, drinking, reminiscing, and just plain fun. We really hope you can share it with us!

Dear Alumni

AlumNotes

Dear Alumni of Evergreen: "Collaborations" is in the minds of 25 Evergreen musicians. These musicians are recording and producing their original songs on TESC's first record album project. The theme, "Collaborations" has woven its way into the melody of every composition. By mid-July the double-album sampling of Evergreen's diverse talent will be ready for a far-reaching distribution.

The project was a tiny seed in January and by the mid-March deadline, over 80 submissions had been turned in. A core of students planned the marketing strategy, album graphics and overall operational budgets. These were presented to the administration for approval. Everyone has been positive and smiling at the possibilities. The promotional potential for Evergreen is exciting! Collaborations will be sent to selected AM & FM radio stations, commercial and non-commercial, across the United States. The music will speak for Evergreen's facilities and programs. We hope it can spread TESC's excellence to an audience not often reached.

We'd like to thank all of the alumni for supporting Evergreen through its finest years. We wouldn't have been able to record and produce this album had it not been for the accomplishments and persistence of Evergreeners before us.

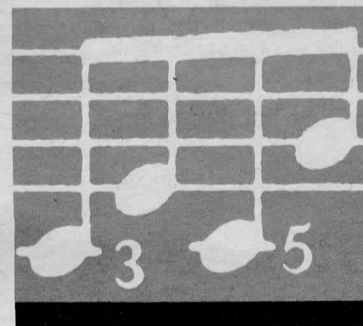
We will have 800 copies to sell in the first pressing. If you would like to reserve a copy of Evergreen's first "Collaborations" please do so. We would appreciate your support!

Sincerely,
Evergreen Album Project

One Double-Album \$7.00
Two Double-Albums \$14.00
Three Double-Albums \$18.00

Cost includes shipping

Send checks to:
Evergreen Album Project
TESC Comm. 301
Olympia, WA 98505
Phone: 866-6096



AlumNews is the official publication of The Evergreen State College Alumni Association, issued quarterly in conjunction with the Evergreen Review.

Editor: Lee Riback
Contributing Writer: Bonnie Marie

Summer, 1980, Volume 2, Number 4. Send written submissions, photos, graphics and inquiries to the Editor, AlumNews, c/o Alumni Office, LIB 3103, The Evergreen State College, Olympia, Washington 98505.

Scott Bond ('78), a student in the University of Washington Graduate School of Social Work, has received an NIMH Mental Health Administration Project Grant.

Scott Bond ('78), a student in the University of Washington Graduate School of Social Work, has received an NIMH Mental Health Administration Project Grant.

Pete (Pugh) ('73) and Rachel Bonyun ('76) (formerly Roberta Gerstl) live in Port Townsend, Washington, where they own The Music Store. They sell sheet music and instruments, and offer a comprehensive music instruction program.

Mathew Clark ('79) lives in New Haven, Connecticut and is a student at Yale Medical School.

Bob Dickson ('76) is a methods analyst for The Boeing Co. at the Auburn plant. He lives in Olympia with his wife Betty and their two sons.

Linda Eber ('74) lives in Venice, California. She's a photographer and coordinator of the media resource center at the Social and Public Art Resource Center. She will have a photography exhibit at the University of Victoria McPherson Library Gallery from August 17-29.

Patty Emmons ('76) has completed her master's degree in maternal-newborn nursing at Yale University and is a nurse-midwife at Booth Maternity Center in Philadelphia.

Lynn Freed ('78) lives in Beaverton, Oregon and is a shipping scheduler for Floating Point Systems, which produces a microprocessor that assists the functions of larger host computers.

Jacquelyn Goudeau ('76) received a graduate degree in public health from U.C.-Berkeley. For the past three years, she has been freelancing in urban planning, preparing to start her own firm. She is doing some pre-planning work with Nigerians and hopes to have an international planning team soon. She also plans to return to school and complete another master's degree in international planning.

Joan Stevenson Graham ('73) lives in Oakland, California. She and her husband are the proud parents of a year-old son.

Paula Griff runs an art studio in Nak Nek, Alaska.

Neal Hurlburt ('77) lives in Boulder, Colorado, where he is studying for his Ph.D. in astrophysical fluid dynamics in the University of Colorado's Department of Geophysics.

Betty Mahan ('74) is a court administrator and court commissioner for the Kitsap County Superior Court and resides in Port Orchard, Washington.

Deborah Manning ('77) has been studying toward her master's degree in human development at Pacific Oaks College in Bellevue, Washington, and Pasadena, California. She will resume her position as Head Start teacher and supervisor in the Olympia area in the fall.

John Mills ('75) is studying toward his master's degree in journalism at the University of Oregon. Prior to that, he was a planner with Clatsop County in Astoria, Oregon, for three years and traveled in Europe for five months.

Alex Mintz ('75) lives in Spokane, Washington, and is studying for his master's degree in applied behavioral sciences at Whitworth College's Center for Applied Studies.

Tim Moffatt ('74) lives in Seattle and is attending the University of Washington graduate school in librarianship.

John Moore ('75) received a master's degree in public administration from Idaho State University in 1978, and is now the director of a migrant workers health clinic. He lives in Pocatello, Idaho.

Marsha Morse ('73) lives in Seattle and is employed by the Washington State Ferry System.

Jim and Marilyn Newport ('76) live in Sisters, Oregon, where Jim is a construction worker and Marilyn is employed at the Black Butte Ranch. After graduating from Evergreen, they worked in Iran for a year and a half; Jim was a construction supervisor training native laborers and Marilyn was in charge of the payroll. They then traveled through Europe for several months before moving to Sisters.

Fred Nolan ('78) is studying English at the graduate level at the University of Utah.

Nancy Parkes ('78) has recently moved to Washington, D.C., to accept a position as energy legislative aide to Rep. Dick Ottinger (NY), Chairman of the Energy, Research and Production Subcommittee. Her former position was reporter for the Port Angeles Daily News.

John Petrich ('79) lives in Olympia and is working for the American Association of University Women (AAUW), organizing a series of community forums throughout the state to study and make recommendations for the delivery of human services to children and families.

Russ ('77) and Lucinda Pfeiffer-Hoyt ('78) are building a home and starting a farming operation in Acme, Washington. They have also worked on trail construction with the Forest Service.

Anne Pflug ('76) lives on Bainbridge Island, and is administrative assistant to the mayor of Poulsbo, Washington.

Kevin ('77) and Molly Phillips ('75) live in Olympia, where Kevin is an agent for Farmers Insurance Group at the district office. Molly is a personnel technician for the Local Government Personnel Institute, a division of the nonprofit Association of Washington Cities.

Suzanne Senn Pitt ('73) lives in Eureka, California with her husband Bill and three children, Alice, Ann and Joe. Since leaving Evergreen, Sue has graduated from the Stanford University School of Medicine as a primary care physician assistant (medex) and is now in charge of the dayshift nursing staff at Humboldt County's new psychiatric health facility. The family lives in Freshwater Farm where they raise sheep, have a large fruit orchard and run a wholesale nursery.

Roger Price ('76) is a residential care development specialist at the Fernald State School in Waltham, Massachusetts, near Boston.

Leslie Rasor ('75) is the associate coordinator of the women's program and coordinator/instructor for industrial orientation at Lane Community College in Eugene, Oregon. Leslie was one of 16 people in the western United States chosen to present testimony May 15-16 before the National Advisory Council on Women's Educational Programs and the National Advisory Council on Vocational Education.

Gregory Renault ('73) received his master's degree in social and political thought from York University, Toronto, and the Ph.D. is pending. He was a lecturer in the Sociology Department at Trent University in Ontario (1976-78), has published a book and several scholarly articles, and is on the editorial boards of three academic journals. He's now writing and job hunting in Bremerton, Washington.

Steve Richter ('77) recently received his master's degree in applied behavioral sciences from the Leadership Institute of Spokane (affiliated with Whitworth College). Steve, his wife Julie and their daughter live in Elma, Washington.

Jane Sameth ('78) has spent most of the last year on Kibbutz Neot Mordechai in Israel on ULPAN program. She plans to do some traveling in Europe and then pursue a master's degree in dance education.

William Schlecht ('75) is manager of Planning and Building Inspection for the city of Vancouver, Washington.

Stephen Semel ('73) lives in San Francisco and is a feature film editor.

Charles Silver ('75) counsels adolescents at the Mid-County Medical Clinic in Richland, Washington.

Mark Stevens ('74) is director of counseling for Olympic High School in Bremerton, Washington. He received his master's degree from Pacific Lutheran University in 1976.

Craig Swanson ('77) lives in Bellevue, Washington, where he owns a construction company that contracts siding installation on new homes and condominiums.

Doug Taylor ('76) is a sales manager for BAP Import Auto Parts in Spokane, Washington. He is president of Northwest Motorsports, Inc., and also contributes articles and photographs to Autosport Northwest, their monthly newsletter.

Merle Templeton ('77) is a registered nurse in Vancouver, Washington.

Kathy Sickles Waters ('77) lives in Bellingham, where she and her husband Greg operate Chrysanthemum Enterprises, a landscape/gardening business. They are building a passive solar home in Nooksack, Washington.

Marsha Wolf ('76) received an M.S. in human genetics from Sarah Lawrence College last year. While attending Sarah Lawrence, she was awarded a March of Dimes Grant and a Carnegie Foundation Scholarship. She lives in Seattle and is currently employed by the State of Washington's Genetics Program as a coordinator of the statewide Newborn Metabolic Screening Program for congenital hypothyroidism and phenylketonuria.

Nina Wolsk ('78) received her master's degree in special education in June from the University of Washington. Nina lives in Seattle.



Photo by Kennedy Poyser

Brown Derby Closes

Bad news for you lovers of Martha Davis' and Rayma Sullivan's piled-high cream pies, delicious homemade soups, and other delectables. Davis' Brown Derby in Olympia, a favorite eating establishment and employer of numerous Evergreen students for nearly a decade, closed its doors for good at 8 p.m. on Saturday, June 28. As testimony to the Derby's widespread reputation, the retirement party for the two partners on June 26 was featured on Seattle's Channel 4 news.

Rayma explained the closing, "If we could continue it in the way it has always been, that would be great. But, we're slowing down."

Their hard work was a large part of the Derby's success. Dining in Olympia won't be quite the same, but we wish them the best in their well-deserved retirement.

Hot off the Press

Well, almost... The first ever alumni directory is in production and will be ready for distribution at the Alumni Reunion in September.

The directory will include your name, address, phone number (unless you've requested that we not include it) and your year of graduation. A separate section will list all graduates by ZIP Code so you can find other "Greeners" who may be living "just around the block" without your being aware of it.

If you will not be at the reunion in September and wish to receive a copy of this limited first edition, mail a check or money order for \$2.00, payable to *TESC Alumni Directory*, to Alumni Office, The Evergreen State College, Olympia, Washington 98505.

14 Alumni in First TESC Graduate Program

Fourteen Evergreen graduates and three former students have been accepted into the school's new Master's in Public Administration program which begins this fall.

They are Patricia Avery, Eric Bailey, Marie Cameron, Kevin Clark, Debbie Creveling, Nancy Dombrowski, Donovan Gray, Meredith Halliday, Elizabeth Hansell, Kenneth Harden, Sue Heflin, Chris Lane, Bob Ranzenbach, Suzanne Shaw, Kelly Stack, Eldon Vail, and Marta Wilder.

Our congratulations to each of you!

Thanks to....

...the 101 alums who referred more than 165 prospective students in response to the Admissions Committee request in late February. Our admissions assistance program is off to a great start!

...Jill Fleming, Gary Mozel, Bob Butts, Brian Milbrath, Scott Salzer, Grant Bunker, Joe Dear, Chris Meserve, Terry Oliver, Doug King, Chuck Albertson, Molly and Kevin Phillips, and Robin Stanton, who helped make Alumni Association participation in Super Saturday a success by staffing the alumni information booth, the Super Saturday beer garden, and the food concession. The Association raised nearly \$250 from the sale of Association T-shirts and a share of the beer garden proceeds.

...Debbie Creveling, Tiare Mathison, Pat Foster and Susan Hansen, who coordinated the annual graduation potluck for seniors and their guests, sponsored by the Alumni Association.

...Toni Holm and John Paul Jones III, who announced the names of graduates at the ceremony on June 8. John had the pleasure of reading his wife Jeannie's name as a graduate.

...Donna Hayes and Bonnie Marie, Alumni Coordinator, who presented each graduate with a Douglas-fir seedling.

...Bob Butts, Alumni Association President, who welcomed the Class of 1980 into the alumni ranks. Bob shared his personal reflections about the rewards of an Evergreen education and the challenges of interpreting that education to those unfamiliar with its quality. He encouraged graduates to apply the skills they acquired at the college in all aspects of their lives.

Volcano Sunday

The eruption of Mount St. Helens had hardly subsided, and the ashfall had scarcely settled in eastern Washington, before proposals for studying the impact of the mountain's actions were being drafted in Evergreen's faculty offices.

The volcano, situated some 70 miles southeast of the campus, had been attracting researchers from throughout the nation all spring, ever since it first began emitting clouds of steam and threatening tremors in mid-March. Then, on May 18, St. Helens erupted, causing the first major ash fall ever experienced in the United States, taking several lives, causing millions of dollars in property damage, and scaring the mushrooms out of 30 surprised Evergreen Leisure Education workshop participants.

Led by faculty chemist Dr. Michael Beug, the participants had set out to identify and collect mushrooms while they camped along the White Pass Highway in the Cascade Mountains. The evening of May 17 they settled in at Clear Lake, 45 miles east of the then fairly quiet volcano. Right after breakfast Sunday, they noticed a huge black cloud heading their way.

"I urged everyone to get things put away so they wouldn't get wet," Dr. Beug remembers. "But, when the 'rain' started to fall, it wasn't wet." He and his crew immediately decided the rain was ash and St. Helens had erupted. Within seconds, they began a hurried flight down a side road leading to the White Pass Highway and home.

"Within minutes we couldn't see the road at all," Beug says. "There was absolutely zero visibility except for flashes of lightning and what we think were fireballs." Ten minutes after they began their descent to the highway, Beug says they looked back "and saw the campground area in flames." It was then he says, "we began to think we wouldn't get out alive. The absolutely awesome power of the eruption was all around us—tremendous, ferocious lightning flashes that came close to our cars, loud cracks of thunder and total darkness."

Three and a half long hours later, all of the Beug caravan made it off the mountain. Several couldn't make it back home from the eastern side of the Cascade range—across the ash-clogged mountain passes—for up to four days, but all eventually returned to Olympia with ash and tales of their adventure.

The mushroom pickers had scarcely washed off their cars, when Evergreen student Herman began studying the effects of the volcano's eruption on bees. Herman, on academic contract Spring Quarter with Evergreen faculty scientist Dr. Robert Sluss, was serving an internship with an entomologist in Moses Lake. His task was to monitor beekeepers' hives to determine losses due to insecticide. When St. Helens erupted, it sent tons of ash to Grant County, prompting Herman and his intern sponsor to shift the emphasis of their work and immediately begin analyzing the effects of ash on bees in the Columbia Basin, one of the state's major agricultural areas.

While Herman was gathering details in Moses Lake, two Evergreen faculty scientists were polishing proposals to study other impacts of the eruptions.

Visiting faculty geologist Dr. John Warren set his sights on conducting a geobotanical study of the return of vegetation to areas completely covered by ash in the first May 18 eruption. He hopes this summer to involve Evergreen students in analyzing the vegetation differences between areas covered by ash flow, ash fallout and debris (mud) flow.

Dr. Warren also wants to examine the effects on vegetation in areas partially covered by ash, like those hit during the May 25 and June 12 eruptions. In addition, the geologist says he hopes to compare ash sam-

ples taken from several areas, determine their varying chemical compositions, and measure the different effects of those compositions on the areas covered.

Another impact of St. Helens will be examined by research associate Dr. Jerry Cook, who wants to study the effects of ash deposition in lakes, ponds and streams. Working with Evergreen students this summer, Dr. Cook says he will concentrate their studies on invertebrate fauna, such as aquatic insects and other bottom-dwelling organisms, in bodies of fresh water heavily dusted by the first three eruptions.

Work by the Evergreen faculty-student teams will complement studies already underway by federal and state agencies, colleges and universities from throughout the country, and researchers representing dozens of academic disciplines and interests. As one national researcher indicated, "St. Helens has given us the first chance to actually assess the effects of a major volcanic eruption." It has become, he said, "a national education resource the likes of which we've never had before."

Initial indications are that interested Evergreen faculty members and students will be taking good advantage of this significant educational opportunity.



Photo by Stewart Lowther, courtesy Cascade Photographics.



Address Correction Requested
Forwarding and Return
Postage Guaranteed

Thursday is Cookie Day at Evergreen

by Kate Crowe

"Is the Cookie Lady here today?"—a familiar question on campus, asked most frequently by new students. The regular Evergreen community knows that "The Cookie Lady" is a bit of the institution. Kristin Wortman has been on campus for the past four years, selling her goodies every Thursday morning, with the leftovers appearing at Friday night films. "What are Friday night films without a goodie?" is an opinion shared by many movie-goers.

Kris puts in a 50-hour week. She supports herself solely on money from her end-of-the-week sales. "I usually start mixing the cookie dough on Sunday night," Kris says. "All of Monday is spent in preparing the various batters and doughs for the baking on Tuesday and Wednesday.

"I bake approximately 300 chocolate chip cookies, mixing 15 batches at once in a BIG pan. An assistant helps me during peak season, which is winter, of course. I use an ice cream scoop to measure the dough for each cookie. I sell more chocolate chip cookies than

any other and peanut butter is the second biggest seller. All-American cookies, I guess," Kris says with a smile.

She also makes earth cake, toffee bars, brownies, three different fudges (the recipes came from her father), and three types of bagels. Wednesday is bagel production day. The process of preparing 200 or more bagels is intricate and awesome; the result is excellence. Kris's bagels are unique in that they are softer and bigger than most. She uses whole-wheat and white flours in a

50/50 mix. "I invented the recipe for cheddar bagels," she says.

She didn't invent the recipe for chocolate chip cookies, though. It's right on the back of the Nestle's package, and she denies using secret ingredients or special preparation techniques.

The mood of Kris's kitchen is old-fashioned. Measuring cups and spatulas hang on the walls. Twenty-two cookie sheets are stacked on open shelves. Beautiful Bavarian china that her grandmother gave her fill two cupboard shelves.

The cookies bake while canons by Pachelbel or Albinoni play throughout the house. "I love music; I think baroque may be my favorite, but that is a difficult choice to make." Kris is taking voice lessons. "I am striving for an operatic voice, but who know when, and if, that will happen."

The customers are always there in the main thoroughfare of the College Activities Building. A preferred customer speaks German. Kris saw the film *Kaspar Hauser* by Werner Herzog about three years ago and since then she has had the dream of traveling in Germany. "I hope to go by next spring. I love the castles. That movie inspired me to take German lessons; I simply loved the way the people talked. I have had a few tutors and I have had some penpals in Germany. I will probably stay with them some of the time. I plan to bicycle all over and I hope my mother can join me. If not, I will do it alone."

Kris does not know whether she will always be "The Cookie Lady" on campus. "I never know what I am going to do next. I do know that I want to go to Germany."

The Evergreen community will be on short rations during her absence.

Kate Crowe is a part-time student and a full-time secretary Community Relations Office. She expects to graduate in August, 1980.



The evergreen STATE COLLEGE review

Graduation Weekend

Despite rainy skies and threats of volcanic eruptions, graduation weekend at Evergreen brought thousands of persons to campus to celebrate Super Saturday June 7 and to enjoy commencement exercises for more than 400 seniors June 8.

Story continued page one

