

See Page See Page

Yo Greeners, look down the street  
 It's a gated community in Oly, isn't that neat?  
 Feel lucky you got the greens and the beach  
 Because down the street, once wetlands now concrete,  
 double car garage, and SUV's  
 It's urban sprawl no more trees standing tall  
 Home to work, work to home  
 The landscape being overflowed by a habitation in  
 monotone.



**Vox Populi**  
 THE VOICE OF THE PEOPLE

"What do you think of the courses offered Spring Quarter?"



Heather Treadway  
 Junior

"I haven't found one yet. I'm trying to find a sponsor for a contract, but I'm not having any luck."



Joanna LaTorre Hurlbut  
 Senior

"Well, I'm doing a contract ... I'm going to Spain to study the culture. If I wasn't going, I'd have a problem, because there's no cool classes."



Klint Finley  
 Freshman

"Not a whole lot really jumped out at me, but I found some stuff that interested me."



Renee McManus  
 Senior

"Technically, I graduate this quarter, but I petitioned financial aid to [attend] spring quarter. I'm continuing my program and haven't even had to look at the catalogue."



Roberto Saenz  
 Freshman

"I was lucky. I enrolled in the Natural History and Ecology program. I'm going to stick with it next quarter."

photos and interviews by Adam Louie



photo by Adam Louie

Coordinators for the Environmental Resource Center, seniors Eva Clark (left) and John Vilella, are getting ready for the upcoming Cascadia Activism and Ecology Conference.

EVENT NEWS

**Coming: Cascadia Activism and Ecology Conference**

By John Vilella

Activists, ecologists, students, and community members will gather at Evergreen for The Cascadia Activism and Ecology Conference on April 5-8, 2001. The Environmental Resource Center and many other student groups are hosting the conference. The conference will be comprised of panel discussions, keynote speakers, workshops, and discussion groups that will create a forum to discuss environmental issues affecting Cascadia.

There will be a primary focus on forest issues as seen by local activists and members of the scientific community. Rainforest canopy ecologist and Evergreen professor Nalini Nadkarni will speak on the effects of canopy research and activism on the organisms that make up the canopy. Long-time forest activist Peg Millet and renowned author Robert Michael Pyle will give keynote speeches.

Issues of pressing importance to Cascadia will be discussed, including how the FTAA affects our forests and how we can protect our forests from

the newly appointed President and his administration. Environmental lawyers will give workshops to the public on the most effective ways citizens can attempt to influence environmental policy. Panels will address the pressing issue of newly-introduced genetically engineered trees to the Cascadia bioregion as well as the effect of toxins on salmon.

A primary focus of some activist workshops will be on backwoods first aid for action camps. Information will be presented on common healing plants and how to prepare them. Other workshops will address appropriate technologies for sustainable communities and rural community organizing. Mycologist Paul Stamets will talk about medicinal mushrooms of our old-growth rainforests. Erica Guttman of Olympia's Native Plant Salvage Project will give a workshop on urban native plant landscaping.

Ecologists from throughout Cascadia will give presentations on a wide range of plants and animals with whom we share the environment. Conservation biologists will present on topics such as habitat corridors for wildlife and the history of environmental policy. Local experts will lead walks on Evergreen's densely-wooded

campus to help attendees learn native plant and bird identification. Non-profit groups will be able to network with each other and will be doing outreach to the public about their current campaigns. First Nation's presenters will be discussing forest protection efforts and cross-cultural organizing in the Great Bear rainforest of British Columbia as well as locally.

As Cascadians begin to converge for the anti-FTAA protests on April 20, there will be puppet- and drum-making workshops as well as workshops on anti-globalization organizing and direct action. Activist filmmakers, poets, visual artists, and musicians will present their work. The Cascadia Activism and Ecology Conference will be one of the most important forest conferences in the west this year.

Many Olympians have agreed to open their homes to conference attendees, and volunteers are working hard to bring it all together. If you have room and would like to open your home to visiting attendees, please contact the ERC. Students can attend free of charge but are encouraged to register and volunteer. Those interested in attending please visit <http://cascadia.atdlogic.com> or contact [eco2001@angelfire.com](mailto:eco2001@angelfire.com).

TESC  
 Olympia, WA 98505

Address Service Requested

PRSR STD  
 US Postage  
 Paid  
 Olympia WA  
 Permit #65

We are trying to decide whether or not we should keep our logo (please see above) for the rest of the year. Do you like it? Do you think it's ugly? Do you have an idea for a Cooper Point Journal logo?

Please stop by the CPJ office (CAB 316) or phone us (867-6213) or email us (cpj@evergreen.edu) with your suggestions and comments.

### How to get involved

We have a number of meetings in order to better the paper. One issue we'd especially like student input on is whether or not we should keep our current clocktower-and-CPJ initials logo (see above). If you have an idea about what our logo — or in journalism-lingo, the "flag" — should look like, please come up to our office, which is located on the third floor of the CAB building in room 316. Our meeting times are as follows.

**Story meeting**  
Monday 5 p.m.  
**Paper critique**  
Thursday 4 p.m.

**Journalism and ethics forum** led by CPJ advisor  
Dianne Conrad  
Friday 4 p.m.

### How to contribute content

Turn in your story on a disk and printed out to Cooper Point Journal office CAB 316, or email your contribution to cpj@evergreen.edu.

Our deadline is Monday at 12 noon for that week's edition.

Indicate your name and phone number on your submission.

Try to keep your story under 600 words. If you'd like to write more than that, please call The Cooper Point Journal at 867-6213 so that we can reserve you space.

Business  
867-6054

**Business Manager:** Jen Blackford  
**Asst. Business Manager:** Monica Festa  
**Advertising Representative:** Ian Paden  
**Circulation and Archivist:** Michaela Monahan  
**Distribution:** Will Hewin  
**Ad Designers:** Nicholas Stanislawski, Lauren Storm

News  
867-6213

**Editor-in-chief:** Whitney Kovacs  
**Managing editor:** Corey Dean  
**News editor:** Erica Nelson  
**L&O editor:** M.A. Selby  
**Photo editor:** Adam Louie  
**A&E editor:** Mike Tanner  
**Sports editor:** Shasta Smith

**Designers:** Tyler Rollier, Wendy McNeal, Alex Mikani  
**Copy Editors:** Moxang Miles, Edith Nelson

Advisor: Dianne Conrad

The Cooper Point Journal is published 2x/Thursday each academic year, with classes in session the 1st through the 10th Thursday of Fall Quarter and the 2nd through the 10th Thursday of Winter and Spring Quarters.

The CPJ is distributed free on campus and at various sites in Olympia, Lacey, and Tumwater. Free distribution is limited to one copy per student per person. Personal use of more than one copy should contact the CPJ business manager at CAB 316 or at 867-6213 to arrange for multiple copies. The business manager may charge 75 cents for each copy after the first.

The CPJ is written, edited, and distributed by students enrolled at The Evergreen State College, who are solely responsible for its production and content.

Contributions from any TEPC student are welcome. Copies of submissions and publication criteria for news and story content are available at CAB 316 or by request at 867-6213. The CPJ editor handles the final use, on the acceptance or rejection of all news advertising content.

The CPJ will accept and classified advertising space. Information about advertising rates, terms, and conditions are available at CAB 316 or by request at 867-6213. The CPJ business manager handles the final use of the acceptance or rejection of all advertising.

Annual subscriptions are available for \$15 per Third Class or \$25 for information.

For more information call 867-6213.

## BRIEFS

### The Purce and the Pauper

TEPC President Les Purce will be holding open meetings with students, staff, and faculty for the rest of the year.

"Before the year is out," said Purce in an Evergreen-wide memorandum, "I would like to make time for some informal, open discussions with members of the campus community." Apparently these meetings are only the first trickle in a planned deluge. "For the next academic year, I plan to establish a regular schedule of meetings..." The same type of meetings? Yes, "...meetings of this type."

The meetings will be in "the area near the Deli in the CAB." Purce had no comment regarding the availability of food and beverages at the meetings, although the atmosphere sounds rather homey. "I invite students, staff and faculty to...[come on in and] get acquainted."

The first meeting was scheduled for March 6 at 4 P.M., although many are unsure whether it happened or not. "There may be occasions when last minute scheduling conflicts prevent me from being available," warned Purce. The remaining meetings will be held at 4 P.M. on the 4th and 25th of April, and the 30th of May. Purce encouraged interested parties to give him a holler. Said Purce, "...please call my office at extension 6100..."

### Other Lands are Murderous

"Going Abroad? Thinking about making some quick money? Think again!" So say the copious press releases from the US Department of State, showing the profile of a young girl behind jailbars and scary red lettering. "If someone offers you a free vacation and a big chunk of cash just for bringing back a suitcase or package no questions asked- Remember: Here are some of the more interesting points it lists. "When you leave the US, you leave our laws behind. The police are waiting for you. You will be thrown in a crowded jail cell. You will not have access to a modern shower or toilet. You will stay in jail for years and years." Phrased like the product of a demented fortune cookie writer's fevered mind, the moral of this story is **drugs are bad.**

## Corrections

- Many photos ran without credits last week. Vox Populi on page four was done by Adam Louie and Kevan Moore. Arcadia on page eleven was by Adam Louie. Sports pages eighteen and nineteen were done by Ezra Small.

- On the cover of last week's issue (March 8, 2001), we incorrectly called the individuals in the photo "students." The individuals in the photo are faculty, and their names, from left to right, are Peter Robinson, Jaime Gutholm, Sharon Anthony, Rip Menninway, and Shane Peterson.

- On page two of last week's issue, we said that Evergreen administrators dropped the college's Worker's Rights Consortium (WRC) affiliation and are considering joining the Fair Labor Association (FLA). Administrators did not drop our WRC affiliation. They dropped our FLA affiliation. They are considering joining the WRC.

- In last week's calendar (page 23) we erroneously referred to The Coalition Against Sexual Violence as "The Coalition of Sexual Violence."

- On page twenty-one, the "Regentrification of Education" claimed that I-200 was a California Initiative. It was a Washington Initiative.

### Gag Rule is Murderous

**Feminist Majority Leadership Alliance**  
President George W. Bush declared a war on women worldwide with his first executive order reinstating the "gag rule." This policy denies U.S. federal aid to any family planning programs in developing nations that use their own monies or monies from other sources for counseling, information, or referrals about abortion. Thousands of young women in developing nations will die as a result of Bush's decision.

Abortion counseling and services are greatly needed throughout the world. The United Nations Population Fund (UNFPA) estimates that 150 million women worldwide lack access to reliable information about family planning and reproductive health. Out of 585,000 maternal deaths each year, 200,000 are attributable to lack of contraceptive access or contraceptive failure, and 50,000-100,000 result from complications of unsafe, illegal abortions.

With no other options, young women in developing nations will be forced to turn to illegal abortions, too many of them dying as a result of serious infections or other complications. In too many countries, young and unmarried women who have no access to contraception or to even illegal abortion face the cruel consequences of an unwanted pregnancy: acid burnings, beatings, and even death. For more information, contact [www.feminist.org](http://www.feminist.org)

### Slightly West is Coming

By Erica Nelson

Feeling **Slightly** dreamy, I walk towards the **West**. My life **has** been but a series of random events. All I have is **gone to** the wind, lost in the unrelenting **press of time**. Memories, like faded Xerox **Copies**, will serve me no solace now. "So **be it**," I said to the August sky. "The only promise **available in** this day is the sweetness of oblivion." **CrABs**, all 320 of them that I had released from the seafood shop earlier in the day, clicked across the sand **after** each other, instinct pulling them towards an elusive **spring**. I decided to join their bottom-dwelling ranks, and moved toward the spot where the waves begin to **break**.

### Tuition Hike Protest in April

A statewide protest action against the governor's proposed 40% tuition hikes for higher education will be held April 6 on the Capitol Campus at noon. The protest is sponsored by the Coalition in Defense of Education and will call for the stop of the proposed hikes, privatization of campus services, and the redirection of tax subsidies for corporations. The protest also supports raised salaries and wages for all who work in the education industry. Organizing meetings will be held on March 21 and April 4, at 5:30 in the library lobby.

### Eathquake is Murderous- For Some People's Jobs

As a result of Governor Gary Locke's emergency proclamation, special financial assistance is available in eight counties for workers who lost their jobs, can't get work, or were injured because of the February 28 earthquake, a press release from the State said. Assistance is available in King, Kitsap, Lewis, Mason, Pierce, Thurston, Snohomish, and Gray's Harbor counties. Qualified applicants will be eligible to receive from \$140 to \$478 per week in benefits. To request an application form to be mailed or faxed to you, call 1-866-416-7274.

## THE POLICE

### Drinking, dogs, and derring-do

by Jen Blackford

It's the last week of winter quarter, traditionally a time when people begin to wake up again, look at their lives, and think. "What have I been doing? Yeah, that contract on campanology was a really great idea. Why didn't I take math? Oh, that's right, I'm at Evergreen."

It's also a time when you reflect on past events and future possibilities. It's a time for examination before the rush of the last quarter. When you look back and realize that a lot of crazy things happen at this school and a great deal center around drinking, fire, and the inherent fragility of glass.

And this week is no exception. We have a broken door, a wooden pipe, and a fire on school grounds. If it were a painting, it would have been a masterpiece of surrealism, a Magritte or a Dali, but instead, it's life, and it's just plain weird.

As a side note, I've had a request for names of officers involved in the incidents I report on. Do you want me to include them? Drop me a line or two near the CPJ letting me know yes or no, otherwise I'll continue on my merry little routine that works so well...sometimes.

On with the mayhem...

**March 6**  
Nothing really happens. I mean, if you like car boots and tickets for speeding, it's pretty eventful, but other than that, it's a slow day.

**March 7**  
10:56 a.m. A series of telephone harassments is reported to the police. Details have been withheld (by the blotter editor) due to the sensitive nature of this incident.  
5:27 p.m. A person reports a case of being followed to the police. Again, details will be withheld due to the nature of this incident.

6:18 p.m. A brazen crime in the daylight leads an officer to investigate a great escape. A "loss prevention employee" needs assistance when an individual takes a pint of Ben & Jerry's (\$3.15) from the Deli. He loses track of the suspect, but later sees him leave the Greenery and confronts him outside. The suspect insists that he has "pre-paid" for the ice cream and asks the employee to hold his ice cream and spoon. The suspect then proceeds to run away and lose his pursuer behind C-Dorm. Sadly, the suspect is not found and the ice cream is not resold, due to the fact that the thief has already partaken of its icy goodness.  
7:46 p.m. Yells heard in Housing lead to the police investigating an argument between a couple. However, when they arrive, a resident says that

the couple is now calm and no longer fighting. Thus endeth this report.

**March 8**  
4:16 a.m. Ah, the chill in the air. The sound the trees make as they rustle in the wind. The glow one feels in not paying money to housing. Yes, these are just a few of the joys in sleeping in F-Lot. But of course, nothing good lasts forever, and one must leave this shelter, especially when the police come and give you a ticket for habitation.

8:49 p.m. You know, some Evergreen students consider camping to be a great way to spend your weekend. Hanging out in the woods, roasting marshmallows, singing off-key loudly...all of these are fun things to do. But if you can't make it out there, consider this. You could always have a campfire in front of the Mods like some enterprising Evergreen students did today. Sure, you may get busted, but at least, you avoid the mosquitos, bears, and horrible demonic creatures that also dwell in these forest glens.

**March 9**  
12:52 a.m. Malicious mischief occurs in H-Dorm. What kind? You tell me. Seriously, tell me, because I have no idea what happened.

7:48 a.m. Drug paraphernalia in the CAB? Perish the thought! An officer responds to a call and is presented with a wooden pipe on a key chain, "known to be used for smoking marijuana." It was found that morning in the breakroom and was reported to have been left by one of the nighttime cleanup crew. The person who reported it also states that he would like "Police Services to make periodic patrols and arrest and prosecute anyone" found using drugs.

For indeed, earlier that week a [blacked out] known to be used for [blacked out] was found in the men's restroom. What was this unknown item with a suspicious purpose? Since we don't know, feel free to make it up. You're used to doing that anyway.

9:26 a.m. A person reports a case of harassment to the police. Details are again withheld due to the nature of this incident.  
1:24 p.m. A dog attack that could have been bloody, but wasn't, occurred today. A German Shepherd/Retriever mix nips a student on the wrist after the dog gets off its leash. Luckily, she is uninjured.

1:25 p.m. Haiku of the week:  
Silver dollar hole  
in tail light of a cop car  
Shiny red plastic  
5:17 p.m. A burglary in the library basement leads to widespread concern about everybody's photocopies. At least that's what I'm hoping.

**March 10**  
Two open reports and a malicious mischief incident in the HCC are the major points of the blotter today. There is a child protective services referral and a minor in consumption that still remain unavailable. As for the malicious mischief, it consists of a person trying to open a broken door in the HCC and succeeding only in breaking the screws that were holding the door shut.

**March 11**  
2:09 a.m. There's nothing like bonding with your sister. You know, riding in a car, going to parties, getting



pulled over and busted for alcohol-related offenses.

It all begins with a car getting stopped for going ten miles over the speed limit. The odor of alcohol is detected on the driver and she is asked to present i.d., which shows her as 20 years old. Apparently, she went to a party and drank a little.

The driver fails three out of four drinking tests and gets a breath test reading of .055 at the scene. She is arrested for DUI and also given an infraction for speeding.

Meanwhile, the two sisters in the car are also tested and while one has not been drinking, the same cannot be said for the other. She is arrested for MIP and placed in the back of the police car. Her non-drinking sister asks to stay with her sister and ride back to Police Services, whereupon both are released into the custody of a family friend. The aforementioned driver is given a ride home as well.

**March 12**  
The only crime of interest (at least to me) today was an item getting stolen from Media Loan. It is rumored that it was a long-missing Palmcorder finally reported this week, but I cannot verify this at press time, so alas, once more you are given suppositions and unsubstantiated statements. So that shouldn't come as a surprise to you.

Have a great spring break...

## Harmony Antiques & Karinn's Vintage Clothing

### Check Out Our New Spring Merchandise!



**HARMONY ANTIQUES**  
113 Thurston Ave. NE  
Downtown Olympia  
OPEN DAILY  
(360) 956-7072

Complimentary Batdorf and Bronson coffee served daily.

Your friendly neighborhood antiques, collectibles, & giftware store

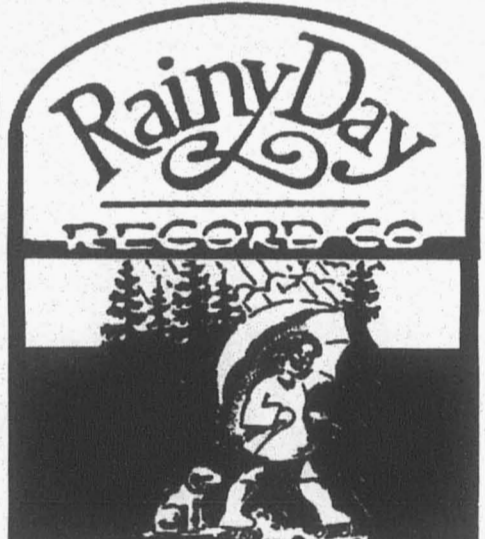
### Chrysalis

111 Legion Way  
Downtown Olympia  
(360) 753-5527

WE'VE MOVED TO A BIGGER & BETTER LOCATION WITH COOL STUFF.

BEADS  
INCENSE  
CANDLES  
STICKERS  
BUTTONS  
CARDS AND POSTCARDS  
QUEER GEAR  
GLASS ART  
STERLING SILVER  
AND A LOT MORE!!!

TUES-THURS: 10 AM-8 PM  
FRI & SAT: 10 AM-10 PM • SUN: NOON-5 PM



Since 1973  
CDs, Cassettes, Lps  
New & Used  
Spring Sale Approaches!  
April 21 & 22

NEW LISTENING STATIONS  
for CDs and Records!  
*There is much that you can hear and buy!*

Skateboards, Clothing, Converse Shoes  
Ph 357-4755  
M-Sat 10-8, Sun 12-5  
intersect of Division & Harrison  
@ Westside Shopping Center

# The Head of the Beast

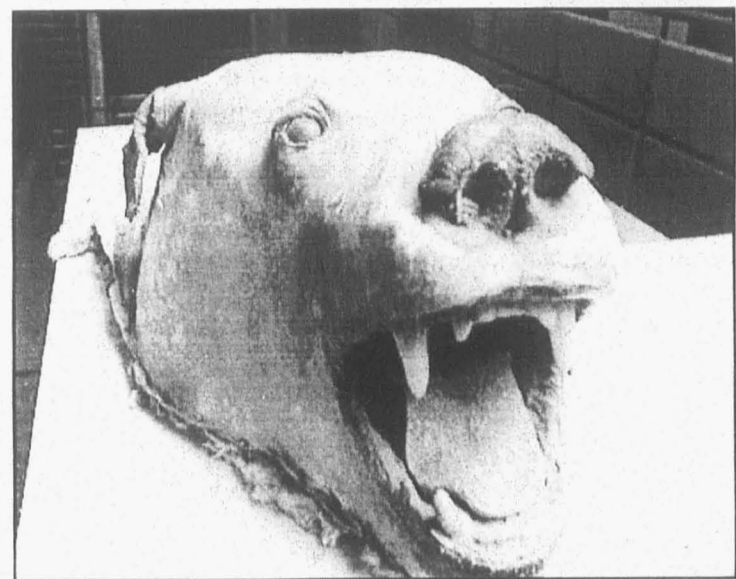


Photo by Kevan Moore

Is it a dog? Is it a bear? Is it your momma? Whatever the hell it is, it was found in the CRC last week.

News and Analysis by Samuel Freni-Rothschild and Mosang Miles

### INFORMATION

The head of a beast was found in a mysterious tunnel in the Evergreen College Recreation Center on Friday, March 9. The furless, partly mounted, decaying cranium was unveiled on Sunday, March 11, to the bewildered, somewhat disgusted student staff of the CRC. Where the hell did this head come from? Well, let's first examine the "facts."

It all started with a tip. On Thursday, March 8, a patron informed the door attendant that there was a bear head in an air duct in the hallway that leads to the CRC's recycling and trash dumpsters (affectionately referred to as the "Freddy Krueger hallway" by the staff). These dumpsters are located in the parking lot underneath the space between the CAB and the CRC.

The door attendant was a bit surprised at what had just been related to her and, as a result, did not think to inquire as to how this gentleman acquired such information. She decided to make a note of it and passed it on to her superiors.

The next day, Mike Anchors, CRC Facilities Manager, and a gaggle of student supervisors and other TESC employees ventured down the aforementioned hallway to take a gander. What they found was a hole in the wall that extends 200 feet underground into the netherworld of the Evergreen forest. It resembles a very large concrete air duct. However, it is

NOT an air duct; strangely enough, according to student supervisor Bonnie Palzer, there are no other pipes or connections whatsoever to this tunnel. Armed with a flashlight and his wits, Anchors proceeded to crawl down this ominous crevice. With memories of the recent earthquake still fresh in his mind, he was startled by a twinkling in the distance. He realized with a jolt that his flashlight beam was bouncing off a pair of eyes, dark, menacing eyes. "As any sensible person would do," Anchors proceeded to get the hell out of there.

With the Boss-man out of commission, Palzer stepped up to the plate, accepted the torch, and took the plunge. Mixed metaphors aside, Palzer crawled down the length of the tunnel and discovered the severed head of a bear-dog creature/beast. It had evidently been down there for quite some time. Even the maggots, those agents of death and decay, had themselves begun to rot. Going back to fetch a pair of gloves and a towel for sanitary precautions, Palzer returned to the shaft's end and retrieved the disembodied head.

Those dark eyes that struck fear into the heart of Anchors turned out to be glass... pause for dramatic sting... they were the kind of eyes used by taxidermists. Yes, it's true; the head was stuffed. It was shabbily nailed to some type of plasterboard, and nails had been driven through the top of the head and down its spine. An attempt had apparently been made to mount the head of this... bear?... dog?... wolverine?... Tasmanian tiger? No, no; only one word truly fits... BEAST... BEAST!!!

### DISINFORMATION

Now, the question remains: where the hell did the head come from? A number of theories have surfaced on this matter. The most obvious of these, of course, is the ancient theory that the college and all of its facilities are really just a front for a pagan-ritualistic-blood cult, and that the head was being used in some sort of interdisciplinary sacrifice. But let's try to think critically

about this and look beyond the most apparent solution.

A viable theory is that presented by CRC employees Kirsten\* and Polly\*. They propose that a militant gang of vegans, jacked up on nutritional yeast and soy products, killed the beast in a fit of self-righteousness while it fed on the remains of a recent kill. When they recovered from their berserk bloodlust and realized what they had done, they dismembered the corpse and hid the pieces around campus, which means that they are still out there... waiting to be discovered. Now, discriminating reader, you are asking: why was the head mounted? Isn't it obvious? The vegan assigned to the disposal of the head was overcome with guilt and attempted to make peace with the spirit of the beast by creating a monument in its memory. But, alas, this vegan's taxidermy skills proved inadequate, and he disposed of the head as originally planned.

Another theory about the head is that it is somehow linked to the secret police training that is said to be taking place in and around Evergreen. The actual link is not clear at the present time. It is possible that the police, while training in the woods, stumbled upon yet another interdisciplinary practice, this one consisting of a poaching/taxidermy operation. There was a pursuit, and the head was tossed down the tunnel by a fleeing suspect in an attempt to rid him/herself of incriminating evidence.

While we can speculate to no end about the origin of the bear-dog head, it is clear that one person must have at least some knowledge: the patron who originally informed the door attendant. We urge you, sir, to be courageous and come forth with what you know. We also urge anyone else who has information regarding this case to come forward and help solve the mystery of... the BEAST!!!

\*Names have been changed to protect the potentially cursed.

**YOUR ART = \$200!** *might*

Enter the 2001 graduation t-shirt contest by submitting your artistic design (no larger than 8 1/2" x 11") to LIB. 1221. Winner of the "tee" contest will get \$200 and their artwork on hundreds of t-shirts!  
 Use the 2001 class motto: *Liberation through education* or make up your own theme! Students and non-students may enter.  
**DEADLINE: MARCH 23 @ 3:00 pm**  
 Questions? call 866.6000 ext 6310.

**COOPER'S GLEN APARTMENTS**

The closest off-campus housing to TESC.  
 Private, quiet, friendly atmosphere.  
 Two bedroom units available now.  
 Month to month rental agreements.  
 On the 41 bus route. Free cable.

It's not too early to reserve summer apartments.

Stop by and see us, or give us a call today.

(360)866-8181  
 3138 Overhulse Road NW

# DISAPPEARING TASK FORCE DIRECTORY

Compiled by Erica Nelson

**American Disabilities Act Compliance**—Evaluates progress and accessibility; contact Linda Pickering at ext. 6364.

**Campus Land Use**—Meets on the last Monday of every month in the Facilities Conference room (Lab II, room 1250) at 7:30 a.m. The committee is made up of eight faculty and staff members and two student members. The students are Daniel Moses and Moriah Eusitce, who can be reached at [tristedelnoche@hotmail.com](mailto:tristedelnoche@hotmail.com). They also have a website, which has all their contact information, agenda, minutes and application forms for land use proposals. In accordance to the Campus Master Plan, the CLUC reviews all land use proposals for the following: consistency with educational mission of the college, consistency with the Policies and Procedures of the Master Plan, suitability with the use criteria for specific land areas of the campus, and environmental sensitivity and SEPA compliance if required.

**Communications Board**—Provides guidance on student media issues twice quarterly; contact Tom Mercado at ext. 6220.

**Deadly Force Review Board**—Review incidents where deadly force is used or threatened; contact Art Costantino at ext 6296.

**Drug and Alcohol Abuse Prevention**—Reviews and develops policy and prevention efforts; contact Liz McHugh at ext. 6200.

**Enrollment Committee**—The Coordinating Committee (ECC) meets alternating Fridays from 10-12 in the Enrollment Services Conference Room. The committee's members include the Assistant to the Dean of Enrollment Services, Coordinator of Student Services—Tacoma Campus, Curriculum Dean, Dean of Enrollment Services (chair), Dean of Student Academic Support Services, Director of Academic Advising, Director of Admissions, Director of Financial Aid, Director of Housing Faculty Representative, Registrar, and Vice President of Student Affairs. Topics for the remainder of the year and beyond include monitoring conversion to the new student record system (Banner), reviewing financial aid packaging philosophy, discussion of new recruitment publications/ mailings, Web page design, review of student recruitment strategies, review of integrating communications and marketing DTF recommendations, and review of summer registration process for Fall Quarter; contact Steve Hunter Interim Dean of Enrollment Services at ext. 6310.

**Faculty Hiring Committees**—Screening and interviews for all positions; contact the Faculty Hiring Office at ext. 6861.

**Food Services DTF**—The objective for the DTF was to "create a set of recommendations regarding what kind of a food service program we should put in place for Fall 2001" and focus on the actual development of specifications and any other documents needed to proceed during

spring quarter. Here is the initial membership: Chuck McKinney (Committee Chair), Alan Nasser, faculty Beckie Kjer, conference services manager Pat Labine, faculty Kathleen Haskett, purchasing manager Piper Kapin, food services liaison Mike Arnow, student Russell Garafalo, student Kevin Anderson, student Shoni Schlotzhauer, student Patrick Rogers (Turtle), student/ Fine Host employee Robin Herring, environmental health and safety officer Peter Kardas (ex-officio). They meet on Mondays at 3:30 in Lib 2130—contact Piper Kapin, Food Service Liaison, at ext. 6501.

**Graduation Planning**—help plan June 2001 events; contact Steve Hunter at ext. 6310

**Health and Safety A/C**—Promotes worker health and safety; it meets monthly for two hours; contact Michele George at ext. 6296.

**Hiring Priorities**—Set priorities for hiring; contact Nancy Taylor at ext. 6398.

**Human Resources DTF** has just been formed. It will be a vehicle to examine areas of concern to employees on campus. The HRS DTF has been charged with looking into many significant issues surrounding exempt and classified employees. The critical issues include recruitment and retention of employees, an analysis of current Human Resources data and information systems, and a review of possible use of the Banner Human Resources module. The members are Meredith Huff, Chair; Karen Durant; Kelly Smith; Betsy Diffendal; Jose Dominguez; Ed Rivera; Patty Barnes; Lorrie Moore; John Carmichael; Maia Bellon; Randy Cravey. Efforts to recruit faculty and staff will only intensify in the coming years resulting from three primary factors:

1. reaching retirement age;  
 2. the college will continue to add new positions to support a larger and growing student body, and;  
 3. the highly competitive labor market resulting from a strong economy.  
 Get more info at their website <http://www.evergreen.edu/user/HRS/dtf/home.html>.

**Human Subject Review**—Advise and approve any sort of human subject research that happens on campus. Help insure subjects' privacy, etc. No students are involved with the committee now, but if you are interested in this, contact Lee Lyttle at ext. 6678.

**Infraction Review Committee**—Hears parking ticket appeals monthly for two hours. They decide to either waive, uphold, or reduce each ticket heard, and they hear an average of 100 appeals a month. Made up of two students, a classified staff member, an exempt staff member, and a faculty member. There is also a non-voting secretary who is a student; contact Susie Seip ext. 6131.

**S&A Fee Review Board**—Helps decide the allocation of student activities funds. Currently hearing student organization budgets. Meets Mon./Wed. 4-6pm; contact Jaime Rossman at ext. 6221.

**Space Management**—Policy and allocation of space quarterly and as needed; contact Michele George at ext. 6115.

**Student Conduct Hearing Board**—Hears students appeals of grievance officer decisions; contact Art Costantino at ext. 6221.

**Student Rep Selection Committee**—Advertise and assist in choosing student trustees—no contact info available for this committee.

Help us keep it "fresh" "Yo!"  
 The CPJ relies on student submissions for its content.  
 Write an article...  
 Take a photo...  
 Draw a comic...  
 Stay "real," "holmes!"

**UW TACOMA**

Obtain your graduate degree from the University of Washington, Tacoma

We offer graduate programs in:

- Master of Business Administration
- Master of Arts (interdisciplinary studies)
- Master of Education
- Master of Nursing
- Master of Social Work

as well as post-baccalaureate programs for:

- Teacher Certification
- Educational Administrator/Principal Certification

Convenient downtown Tacoma location and outstanding UW faculty!

For more information and an application packet, call  
**(253) 692-5723**  
 or visit [www.tacoma.washington.edu](http://www.tacoma.washington.edu)

**Traditions Cafe & World Folk Art**

"Care to know where your money goes?"  
 Support fair trade with low-income artisans and farmers and you will...  
 We are:

- A center for fairly-traded products from around the world
- A cafe with good food
- A performance space for concerts, classes, forums, and more

Website: [traditionsfairtrade.com](http://traditionsfairtrade.com)  
 300 5th Ave SW, Olympia • 705-2819  
 "Just a splash from Heritage Fountain & Capitol Lake"

**WHITEWATER SCHOOL**  
 DO YOU HAVE WHAT IT TAKES TO BE A RIVER RAFTING GUIDE?  
 No experience necessary. Training begins March 31. (six consecutive weekends)

**Wildwater RIVER TOURS** For information call:  
**1-800-522-WILD (9453)**

# FYI Food Services DTF

Last fall, the Food Services DTF took on the difficult task of identifying viable options for food service here at Evergreen. The DTF realized that a healthy food service operation must reflect the unique taste and interest of the community it serves. It also realized that Evergreen does not have the necessary time (12 to 24 months) to develop a self operated food service for Fall 2001. It is the view of the DTF that a self operated food service would be the best choice for Evergreen. In the meantime, the college will have to decide on another method of providing food service to the students, faculty and staff during the school year as well as EF students and conference attendees during the summer.

The DTF's research identified the following models for food services on campus:

**Business Contract (four models) - Managed and operated by a corporation with non-college employees.**

• Exclusive contract 7-10 years • Exclusive contract 1-3 years • Non-exclusive with Local and National vendors • Multiple contracts with Local vendors.

**Self Operation (two models) - Managed and operated by Evergreen with college employees.**

• Begin self operation for Fall 2001 • Extend current contract and create self operation for 2002

**Interagency Agreement (three models) - Managed and operated by a state agency with agency employees.**

• South Puget Sound Community College • University of Washington • Department of Services for the Blind, Business Enterprises Program.

**Each model was evaluated using the following criteria; • Timeframe necessary to implement • Community impact • Ability to meet all the college's needs • Financial implications to the college • Pros/Cons • Political implications**

Utilizing previous DTF's work, prior survey work, other colleges' and universities' expertise, the National Association of College and University Food Services, local businesses and resources as well as professional consultants, the DTF concluded that we must, at this time, pursue a contract arrangement to provide Evergreen's food service for Fall 2001. At this time the DTF is pursuing contract arrangements for Fall 2001. Responses to the Request for Proposals(RFP) are due April 25th, 2001. The DTF's recommendations have been included in the RFP and are as follows:

## FOOD SERVICE DTF RECOMMENDATIONS

### 1. Create a Sustainable Financial Base

The DTF realized that without a mandatory menu plan, any food service operation at Evergreen is profoundly restricted due to the lack of dependable revenue during the academic year. **Recommendations:** • Develop a quality and affordable food plan conducive to Evergreen's unique flavor. • Develop a non-traditional required meal plan for a segment of the Evergreen community for Fall 2002. • Implement a debit card based meal system, integrating all food sites on campus. • Require the debit card system to potentially handle all cash transactions on campus and to be expandable to off campus sites.

### 2. Develop a Capital Facilities Plan

For the facility to operate efficiently and meet the campus audience's expectations, the DTF was advised that "...[campus] facilities are generally dated...and not developed...to respond to the values of today's students"(Rich Wheeler of Fessel International). The current food service facilities lack flexibility and require substantial capital investment. **Recommendations:** • Develop a food service master plan to address immediate, short and long term needs. • Incorporate the food service master plan into the campus master plan. • Develop a phased approach for increased seating capacity. • Develop a phased approach for creating efficient traffic flow in the Deli and Greenery servery. • Develop a detailed assessment of all food equipment and phased replacement schedule. • Develop a detailed assessment of all food service sites and a phased re-conception/renovation plan.

### 3. Combine all Food Operations in the Housing Community Center

Currently there are two separate food operations in the Housing Community Center (HCC). The Subterranean reports to Housing and the Branch reports to the Bookstore. Each operates with substantial student leadership/decision making power and provides distinctive flavor to the campus. **Recommendations:** • Integrate the two operations into one food venue in the HCC. • The new integrated food venue in the HCC would report to Housing if the college enters into an agreement with a private food service vendor or directly to campus Food Service if the college enters into an Interagency Agreement with another state agency. • Require the new combined HCC food venue to develop annual business goals, budgets and marketing plans with college staff support and submit these plans annually to the Housing Director and the Director of Business Services for approval. • Integrate the new HCC food venue into the campus debit card system. • Develop a cooperative relationship between the new HCC food venue and campus food service, providing retail space for food service items in the HCC venue while maintaining the distinctive flavor of the HCC.

### 4. Support of Local Growers and Producers

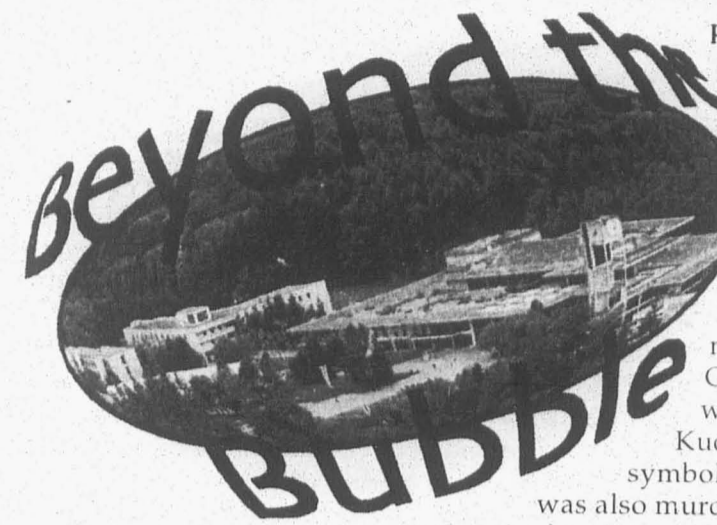
The college food service must develop meaningful partnerships with local growers and producers whenever possible. Evergreen's Long-range Strategic Plan 2000 states that "Evergreen will strive to strengthen, create and support a rich tapestry of formal and informal partnerships and community connections that are mutually beneficial and congruent with the college's values." **Recommendations:** • That food service be required to produce an annual statement defining total food purchases (cost of sales) and the percentage of the total purchased within Thurston County (locally). • Set a goal of 20% locally purchased cost of sales for 2001-2002. • Set a goal of annual 2% increases in locally purchased cost of sales each subsequent year until the total reaches 30% of cost of sales. • That all efforts be made to utilize produce from the college's Organic Farm, using pricing based on the regional supplier's weekly price list.

### 5. Continued Investigation of a College Operated Food Service

The DTF realized that a healthy food service operation must reflect the unique tastes and interests of the institution it serves. The DTF also realized that the college does not have the necessary time (12 to 24 months) to develop a self operated food service for Fall 2001. It is the view of the DTF that a self operated food service is the best solution to Evergreen, assuring complete control over all aspects of campus Food Services. **Recommendation:** • That two to three years before the conclusion of the next outside contract, a new DTF should be charged to review the models developed by this DTF and to determine a food service course that will assure Evergreen a satisfactory and unique food service consistent with the college's tastes and interests.

After exploring the different food service models, it became apparent that for any self-operated food service to be financially viable, Evergreen needs to integrate all of the currently separate components of campus food service operations, as well as develop some type of dependable financial base. It also became apparent that successful college food services are highly dependent on their ability to provide a late-night food option, mainly for the residential community. Understanding the need to create a dependable financial base, a debit-based meal plan became the promising solution. This new meal plan would need to be non-traditional and easily accessible to all students, faculty and staff. For complete text of the Food Services DTF Recommendations, contact Piper @ ex.6501 or kapinp@evergreen.edu.

# NEWS



By Brian Frank, Graham Hamby, Stephen Karmol, and Vanessa Lemire

**Top Stories**  
**Zapatistas Caravan to Mexico City**  
**Militant Protests Continue in South Korea**  
**Five U.S. Soldiers, One New Zealander Killed by "Friendly Fire"**

**International**  
**More than 100,000 people waited in the center of Mexico City last week to welcome 24 commanders of the Zapatista National Liberation Army (EZLN).** The caravan to the capital was meant to draw attention to, and focus public support for, the Zapatistas, who engaged in combat with government troops in 1994 after the passage of NAFTA, with tensions simmering ever since. Another goal was to put pressure on the national congress to pass laws restoring and protecting indigenous rights. Ten million of Mexico's 100 million-person population are natives, who have been among the hardest hit by neoliberal economic reforms under the auspices of NAFTA and IMF/World Bank-induced austerity measures. (more at [www.ips.org](http://www.ips.org))

**Rebel activities have resumed on the border between Liberia and Guinea** as dissidents crossed Liberia's northern border, beating back government reinforcements sent to the area. No casualty figures have been given from either side, but authorities said about 15,000 civilians have been forced from their homes. The dissidents, who Liberia accuses Guinea of arming, have been trying to oust Liberian President Taylor since last year for alleged human rights violations. (more at [www.ips.org](http://www.ips.org))

**President Wahid of Indonesia is being asked to step down because of his chosen absence during a national crisis.** During his African tour, at least 500 lives were lost due to ethnic violence, and thousands were caused to flee to central Indonesia. President Wahid said the level of violence has been exaggerated by the media and refuses to resign, citing the possibility of further destabilization of the country as his primary concern for such a move. (more at [www.rnw.nl](http://www.rnw.nl))

**Students at Ukraine's national university have established an "anti-president" camp around a statue of a renowned Ukrainian poet, known for his anti-czarist campaigning 150 years ago.** Ukrainian President Leonid Kuchma is widely suspected of ordering the murder of journalist Georgy Gongadze, who was critical of Kuchma's regime. In a symbolic parallel, the poet was also murdered by authorities in his time. The students' only request is that the president and his entourage don't approach the statue for the upcoming anniversary of the poet's death. (more at [www.pravda.com](http://www.pravda.com))

**Domestic**  
**Police arrested more than 35 protesters at the Bayer Corporation facility in Berkeley last week, but the activists said the real criminals are giant pharmaceutical companies suing to keep cheap AIDS medicine out of South Africa.** Armed with

signs and loudspeakers, about 150 Bay Area activists surrounded the entrance to the aspirin manufacturer's biotechnology facility, demanding that the company withdraw from controversial lawsuit against the South African government. They called the suit a form of "medical apartheid." (more at [news.excite.com](http://news.excite.com))

**Taxpayer subsidies for logging on National Forests reached record levels last year.** According to U.S. Forest Service (USFS) statistics, the agency made \$546 million in timber sales last year, but requires \$672 million to operate its timber sales program, leaving a net loss of \$126 million which is subsidized by tax money. Taxpayer's rights groups accuse the USFS of engaging in corporate welfare. (more at [www.taxpayer.net](http://www.taxpayer.net))

**Napster, the free online music trading service, was provided with a list of more than 135,000 songs last week from the record industry (with more on the way soon) which it must remove immediately.** A federal court injunction ruled last month that Napster, a service used by hundreds of thousands of people around the world, was in violation of copyright laws. Napster users are reportedly adapting rapidly by converting song titles to pig Latin. (more at [dailynews.yahoo.com](http://dailynews.yahoo.com))

**Environment**  
**Extremely abnormal temperatures caused massive flooding in Central Europe last week, leaving tens of thousands homeless and several dead.** Temperatures in Ukraine have been more than 15 F above average. (more at [ens.lycos.com/](http://ens.lycos.com/))

**A new study from Johns Hopkins University on the effects of lead poisoning suggests that U.S. standards for safe lead levels may be inadequate.** Neurological function was shown to be impaired at levels half that legally allowed in the U.S. (more at [ens.lycos.com](http://ens.lycos.com))

**World population reached 6.1 billion in mid-2000.** Population is growing at an annual rate of 1.3%, or 77 million people per year. It is predicted that population could climb as high as 10,900 million by the year 2050. Half of the annual growth is occurring in just six countries - India, China, Pakistan, Nigeria, Bangladesh and Indonesia. (more at [www.un.org](http://www.un.org))

**Machu Picchu, the famous ancient Incan fortress in the Peruvian Andes, is in imminent danger of being destroyed by erosion induced landslides, according to geologists.** The site is subject to massive commercial tourism and even allowed the filming of a beer commercial last year that resulted in a massive crane falling on the ancient granite sun clock located on the site. (more at [ens.lycos.com](http://ens.lycos.com))

**Laboratory tests have revealed that Morningstar Farms' meat free Corn Dogs are contaminated with StarLink, the unapproved genetically engineered (GE) corn that prompted massive recalls of Taco Bell and Safeway brand corn products last year.** The news is particularly troubling, as Morningstar, a subsidiary of Kellogg's, had claimed to use only GE free produce. StarLink, produced by the Aventis corporation, was discovered to have infected the U.S. corn seed market last month, prompting the USDA to spend \$20 million to buy back the seeds from seed companies. (more at [ens.lycos.com](http://ens.lycos.com))

**Beyond the Bubble** is published each week as a service from EPIC, the Evergreen Political Information Center.

EPIC also publishes a weekly email update on politically related events happening around our area and provides resources for activists at Evergreen.

EPIC meets each Wednesday in Library 3500 at 2 p.m. To receive EPIC's email update, to make comments on the news, or for more information on EPIC, please call 867-6144 or contact [epicupdate@hotmail.com](mailto:epicupdate@hotmail.com).

**Explore the Alternatives...**

- Conscientiously Selected Nutritional Supplements
- Over 300 Bulk Herbs & Teas
- Cruelty-free Bodycare
- Worldly Incense
- Cards • Candles
- Jewelry • Books
- Feng Shui Supplies
- Gifts to Delight You & Yours
- Massage by Appointment

Open 7 Days (weeknites 'til 8)  
**RADIANCE**  
 Herbs & Massage  
[www.radianceherbs.com](http://www.radianceherbs.com) 357-5250  
 113 SE 5th Ave, Downtown Oly

**Grca Books**  
 Olympia's Largest Independent Bookstore  
**Student Discount 10% Off New Texts**  
 We buy books everyday!  
 509 E. 4th Ave. • 352-0123  
 Mon-Th 10-8, Fri & Sat 10-9, Sunday 11-5

**"The Most Fun Place to Shop in Olympia!"**  
**FINDERS KEEPERS ANTIQUE MALL**  
 1728 State Avenue 943-6454  
 Mon-Sat 10-5 Sun 12-4

## Interview with Aaron Komae : Creator of Polarity

**Interviewer:** When did you first conceive the idea for *Polarity*?

**Aaron Komae:** I have to say that I first started to get some ideas probably... let's see, it was more than a year ago. I was basically working on this one painting, which inspired these other sketches and ideas of this mobile painting kind of thing. So it sort of developed from that.

**INT:** Now explain *Polarity*.

**AK:** Basically, the underlying theme is this notion of change and motion equating one another. There isn't one without another. And that this change and motion happens on all levels of existence. From the molecular on up to an extraterrestrial level, if you will. There's that motion flowing, that change flowing, within all things. What I'm trying to do along with the pieces—there are sculptures, paintings—along with that, there's sound collage and video collage, which emphasize that theme of change and motion on all those different levels. From something that's man-made on to something that's more of the natural world.

**INT:** Do you have a favorite piece or part of the show?

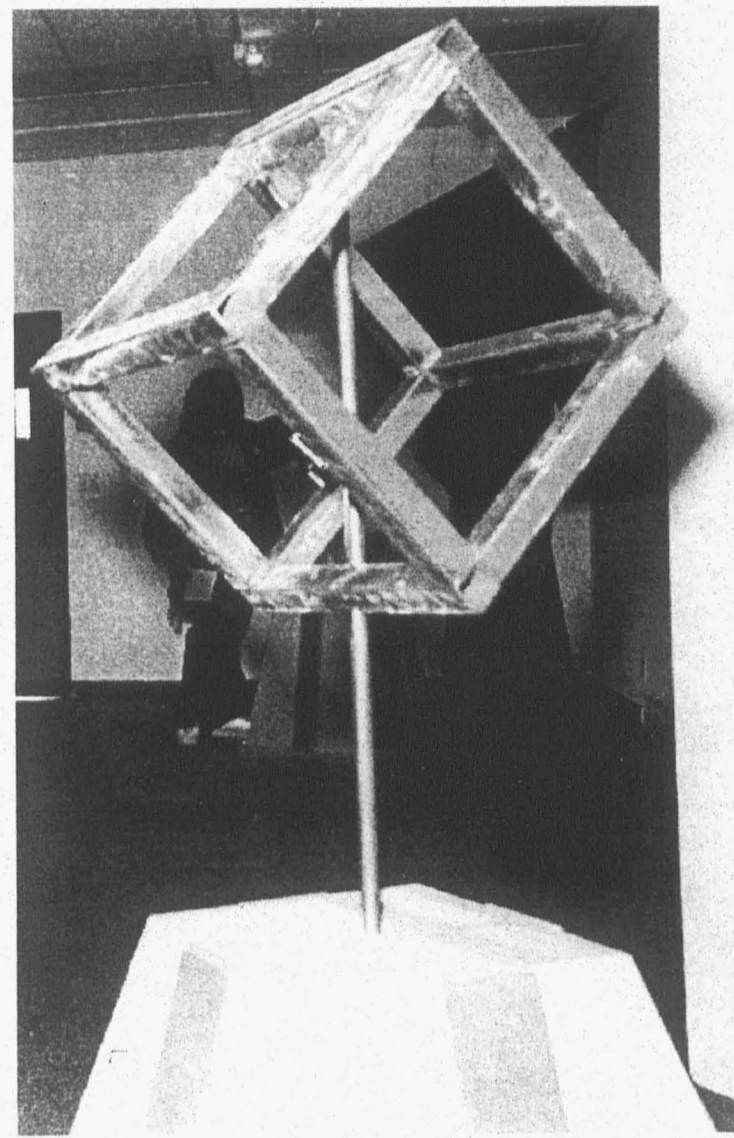
**AK:** No, I can't say that I do, because it all works conjunctively together to create this environment. That's another area I wanted to work with in *Polarity*, changing the space and having the pieces become one with the space rather than just existing independently within the space.

**INT:** What's your favorite color?

**AK:** That's a tricky one. I'll have to say maroon is my favorite color. That's what first pops into my mind.

**INT:** Anything specific you want people to take away from your show?

**AK:** I want them to take with them the feeling that they are part of that change and that motion and that



One of the pieces from *Polarity*

Photo by Adam Louie

flow.

**INT:** Anything breakable?

**AK:** Breakable? Yeah, always something breakable. I guess it just depends on the level of destruction.

**INT:** So people shouldn't break things.

**AK:** No. Some of the pieces are tactile and interactive. So I encourage people to really get into it.

**INT:** You are a senior. How many

people ask you everyday what you are doing after graduation?

**AK:** Everybody, every day.

**INT:** So what are you doing?

**AK:** I'm moving back to LA. I'm going to be on the lookout for some small playhouses or theaters company that I may be able to hook up with set design or assisting with set design.

**INT:** What's your favorite word?

**AK:** Balance.

**INT:** What's your favorite curse word?

**AK:** Oh, shit. I love them all so much, but just off the top of my head, I have to say "goddamn it".

Even though that's more of a three words in one medley.

**INT:** Now, in closing, what do you think of the phrase "Spectacula Dracula"?

**AK:** I'd say, some disco funky vampire who is grooving on the after hours scene. Just doing his thing in that pimpin' funkadified way.

space. No one ever explained why they were exploring. Perhaps they found a treasure map in an old picture frame after their portly friend clumsily dropped and broke it, possibly while doing the truffle shuffle.

**Morning Glory asks:**

**Q:** I heard that there is a girl who is always seen walking down the path from the Mods. It's always at night, no matter what the weather is like. But if you try to follow her, she'll disappear. What's the story?

**A:** I'll tell you a story, Morning Glory. I first heard this story a few months ago and dismissed it as just another student trying to get as far away from the Mods as often as possible. But then one night, I saw her with my own two eyes. It was a Thursday night. Rainy. It was coming home from the editing suites when, in a flash of lightning, I saw a figure walking the little downhill pathway from the Mods. I thought it might just be someone running late for the Camarilla activity that night. Then, she breezed past me and I felt the little hairs on my neck start to stand up

HOW ARE YOU TODAY??

A MUSICAL REVIEW

COLUMBIA

By Sezwaz Tru

CLUTCH

Pure Rock Fury

Two things stick out on this album: guitars and the lead singer's voice. These are things that should stick out on a rock album, of course, but on this CD, they really stick out like spikes on a porcupine. The lead singer's voice is deep and, well, downright intimidating. This is the kind of voice that, if you heard it call your name in the dark of night, your fight or flight instincts would be put into good use. And you would be flying, my friend. Guitars are clearly the centerpiece of this group's personal musical theory. They don't just move the songs along, they stick cattle prods in the smalls of the backs of these songs, and they have no choice but to barrel ahead. I can honestly say I could have this CD in my collection and not feel ashamed about it. But, knowing the rate that I have to pawn my CDs in order to make rent, it wouldn't stay in my collection long. For a clearly rock-oriented band, they do surprise early in the play list with a clever rock/rap style song. And when I say rock/rap, I mean it in a real way, not in some Limp Bizkit 14-year-old way. They also seem to be very into Halloween. Several of the songs are themed around spooky things like "Frankenstein," "Smoke Banshee," "Immortal," "Drink to the Dead," and by far the creepiest title, "Red Horse Rainbow." Is the album pure rock fury, as they claim? Yes, but a more suitable title comes from a line in track 7. The album should be called *Spectacula Dracula*. Now, if it were called that, Clutch's album would stay in my collection no matter how short I was for rent.

and caught the whiff of Gothic mustiness. I would have just kept walking, thinking she was just your average Gaiman-loving, Hot Topic-shopping Goth, but for some, dare I say it, mysterious reason I turned around to look at her, and then she was... gone.

Walking Girl is real, my friends. If you ever see her, please be kind. Surely she is some lost soul desperately seeking closure. Take a lesson from Haley Joel Osment and try to help. She might just need the new Nick Cave album or some black eye-shadow. Help her—please.

How much info can I pack into this column? Judge for yourself, but don't judge me. Keep your eyes peeled for the next installment, where I will blow apart such Myths and Legends as "The Dirtiest Dorm of Doom" and "Naked CAB Man". Also, I'll finally get to the greatest mystery of all, "Why are there so many student groups?"

See ya next time! Oh, and look out for "Spectacula Dracula."

Please feel free to ask any and many questions and I'll do my best to answer them. Mikesez@hotmail.com

GREEN BEER AND YOU STILL HAVE NO REASON TO BE BORED

Mudbay Jug Band

March 17th, St. Patrick's Day, is a special day. It's a time when all God's children take time to reflect on all the great things he's given us: hops, green food coloring, and *The Leprechaun*, starring Warwick Davis and Jennifer Aniston. These are good things. Here in Olympia, you have two great options as to what to do that night. At the Fishbowl Brewpub, starting at 9:00 PM, you can see the Wayward Members of the Mudbay Jug Band. Or, you can check out SoyLint Green, who I am pretty sure "is people" and Herbal Cure at the Go Club at 9:30. The cover is \$3.00.

John Trudell

Also on the 17th, but probably unrelated to St. Paddy's Day, is a benefit for the SAPA Dawn Center-North American Indian Lodge. Spoken word artist John Trudell is appearing at the Capital Theater at 7:30 PM. Admission is a sliding scale, with between 7-10 dollars suggested.

Rough Crossing

Come on, everybody, you know the words! Tom Stoppard! Tom Stoppard! Ain't no stopping that Tom Stoppard! Harlequin Productions down at the State Theater is setting sail with the NUTTIEST ship on the sea. And I don't mean the ship from McHale's

Navy or U-571. Tom Stoppard's meandering farce *Rough Crossing* runs through the 31<sup>st</sup>. Tickets are in between \$15-22.

Polarity

*Polarity*, a Senior Thesis presentation by Aaron Komae. Library 4<sup>th</sup> Floor Gallery. Tuesday through Saturday 12 to 5. Through the 23<sup>rd</sup>. See interview this issue.

Scrambled McManus

Hey, if your parents are in town on the 24<sup>th</sup>, send them to go see *Scrambled McManus*. It's a one man performance of funny haha stories by North West scribe Patrick McManus. The show starts at 7:30 at the Washington Center for the Performing Arts. The tickets cost between \$10 and \$18.

Love Buddha Style

On Wednesday, March 28, at Traditions Café, please join the Sangha Salon, Buddhist Reading Group for discussion and study of "If the Buddha Dated: A handbook for finding love on a spiritual path" by Charlotte Kasi, Ph.D. "This book is about creating love in your life. It begins with bringing awareness, compassion and loving kindness to yourself". Dinner starts at 5:30, 6:15 for the Salon. \$7 to \$15 donation.

3 Bands at Le Voyeur

Three bands! One venue! Dozens of screaming drunks! See Areo, Carissa's Weird, IBOBUKI. Friday 9:00 PM at Le Voyeur. Only a \$5 cover.

Heartsparkle Players

Improvisational theater comes in many forms. The Heartsparkle Players, one of Olympia's Improv triviumvirate, presents *Stories of Caring for the Earth*. This performance will be done in the Playback theater style. People tell moments from their lives and then watch those moments recreated with music, movement and dialogue. This theater form is generating quite a bit of interest with a successful Broadway show and an upcoming television program based on it.

String Cheese

My favorite food when I was 5 was string cheese. I loved that salty rubbery stuff. The String Cheese Incident is playing a string of shows all over the region. Thursday, they are at the Paramount Theater up in Seattle. The rest of the weekend, they are in Canada. I don't cover Canada.

Brian Feist Band

I love Mickey Mouse's first short film. The part when he is whistling and steering the riverboat leaves me in stitches every time. Anywho, every Wednesday you can go see the Brian Feist Band at Tugboat Annies at 9:00 PM.

Karaoke

I've died and gone to Burrito Heaven. At least, I feel that way every weekend when I enjoy the karaoke happenings there. I've sung the songs of my elders there and made them smile upon me

Arcadia Review

by Corey Pein

This play was really, really good. If you didn't see it, then you missed out. It was all about math, poetry, and other arty stuff, but it wasn't so arty that I wanted to commit acts of violence.

Actually, *Arcadia* filled me with a sense of contentment and brotherhood with all mankind. That faded soon after, when I realized that life is not a stage.

Sezwaz Tru is a FAKE name assumed by Michael Tanner in order to review music safely and anonymously.

Hey! The CPJ will, in fact, be printing an issue--yes, that's right--on the 5th of April. Please, oh please, get all of your submissions, stuff, uh, things, letters, comix, classifieds, and advertisements in no later than 5 p.m. on April 2, Anno Domini 2001. Thank you very much, all of you.

Sincerely,  
Captain Brain



## EVERGREEN TRUE STORIES

by Michael Tanner

Whoooooah Nelly! After the resounding response I received after the first edition of this column, I decided to do another one. See, if no one had responded, then I wouldn't have bothered writing another one, even though I said I would at the end of last week's column. See, I'm what some would call a liar. Except when it comes to the answers to your questions about our Mysteries and Legends.

One Eyed Willy asks:

**Q:** What's this "Happy Land" I keep hearing about?

**A:** Ahh, "Happy Land." A place so nice it's rumored to be in several different locations, depending on who you talk to. This part of the story seems to be universal: a group of students create a hangout using some unused area on campus. They paint the walls, they put up Marley

posters, bring in some lava-lamps and bean bag chairs, and have a sweet innocent love-in. Well, the "evil" administration finds out about it and makes the campus police fence up/seal off the area. This traps all the students' possessions inside. The police, who are surprisingly sympathetic to the students, will allow any of the original kids to go in and retrieve their stuff or hang out for a while.

Now, here's where the stories start to differ. The original location I was told about is in the parking area below the CAB and CRC. In an upper corner, now fenced off, on the CRC side. Another place is somewhere in the steam tunnels, but if that were true, my old "friend" Mr. CHUD, would have long since destroyed it. It has also been rumored to be on the tenth floor of A-Dorm, but as someone who lived near the top of that building, I can safely say no. The most intriguing possibility is in the secret half floor of the CAB. Between the first and second floor of the CAB lies a half floor, originally planned for a storage space but forgotten about by everyone. Forgotten, that is, until a group of adventurous students found it when exploring the crawl

# Letters & Opinions



I Was Just Thinking...  
By Gwen Gony

## Truth, Justice, & Raymond Burr

I was recently summoned for jury duty for the very first time. Given my huge misgivings about the way our society approaches crime, and especially punishment, I really did not want to be on a jury. I put it off twice, and then forgot on purpose, but when they sent me a postcard pointing out that what I was doing was a misdemeanor, I gave in and called their Juror Information Line. It was always possible I wouldn't have to serve.

"You are required to report to Thurston County Superior Court at eight A.M. on Tuesday," the recording told me and, while I swore at it, went on at length about which room I was expected in.

When I got to the courthouse, it became clear that this wasn't going to be like Law & Order. I wasn't really expecting an imposing courthouse or attractive lawyers, but I expected the experience to be depressing, or boring, or both. Hilariously surreal I hadn't expected, but after I discovered the recording's meticulous directions had sent me not only to the wrong room but the wrong building, I began to wonder. Once I found the right building, and the metal detector operator decided I wasn't going to kill anyone with my earrings, I was sent through a long line to a woman my mother's age in a suit my grandmother's age. She smiled at me like she had to spend a lot of time smiling at people and clipped a plastic card to my collar that said #44 and was so large I could have used it as a bib. Then, she handed me a clipboard and waved me into the next room.

The walls were yellow-green, the lighting was fluorescent, and I'd only managed five hours of sleep the night before, so the walls sort of pulsed with bright, painful color. I winced and sat down to read the paper I'd been handed. I winced again. The questions were all about my attitude toward sex crimes. This was not a trial I wanted to be involved in. I indicated that I thought such crimes were bad and gave my clipboard back to the smiling robot. She said I should go back to my seat to wait for "orientation" and gave me a

pamphlet about jury duty to amuse me. I sat surrounded by people concentrating hard on their forms, apparently feeling that sex crimes are a complex issue we shouldn't rush to judgment on. The pamphlet explained, among other things, the difference between the Thurston County Superior Court and the United States Supreme Court. I was extremely relieved when the smiling lady called for our attention.

"We are going to watch a film," she said, "which should answer any questions you have. It's narrated by Raymond Burr." It was narrated by Raymond Burr, and in case we might confuse him with Troy McClure, he began by telling us so. He assured us that, although jury members didn't get a bouquet of roses for their service (I swear if I were making this up it would make more sense), they were vital to our justice system. No one else laughed. When the film was over, and none of our questions were answered, the smiling ladies asked us to follow them upstairs. I was pleased to obey.

We were herded into a room, introduced to the people involved in the case, and read the charges. Then the lawyers took turns introducing themselves again, making us laugh half-heartedly, and asking questions. Lots of questions. How did we feel about this thing which might hypothetically be involved in the case? Would our feelings affect our ability to judge impartially? Had we served on a jury before? Would that experience affect our ability to judge impartially? My favorite moment was when the district attorney began asking people to describe themselves as their friends would. Everyone he asked included the words "fair" and "hard-working." I sat there, debating. If he asked me, would I call myself a lazy cheat, or claim not to have friends? Sadly, I was spared the decision.

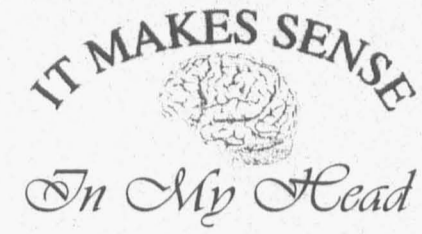
"Ladies and gentlemen," the judge said, "Now we will speak privately in chambers with those of you who feel that it is necessary. I ask the rest of you to be patient."

I sat patiently while the judge conferred privately with potential jurors. I sat patiently while the lawyers argued. I sat patiently while the final choices of jurors were made - in front of us, but so quietly we didn't know what was happening. I sighed. The smiling lady, who was suddenly standing beside me, said, "It is a long process."

"Yeah," I said "But it's interesting in an odd sort of way. Like that film for example...wow."

"Yes, isn't that something?" she said. "It's narrated by Raymond Burr, you know."

"I did notice that," I said.



## A Few Thoughts on Anarchy

by E. Rose Nelson

Flashback to last November - there I stood, in line to make a difference in the way my country/state/county is run. I had read up on the initiatives, watched the debates, and even studied my voter's guide. What happened? I encountered people telling me not to use my hard-won Constitutional right to vote. The answer, they assured me, was in revolution.

I have several thoughts on this subject. First of all, the government has more and better weapons than the individual citizen. They are firmly entrenched. They are organized, and while I know anarchy is against organization, it is definitely beneficial in a war. Guerilla warfare is one thing; scattered bands of brigands are quite another.

Changing the world is like using water to wear down a rock. A drop at a time for one hundred years will wear away more than the same amount of water over the space of an hour. Small, consistent changes accomplish more than attempts to get everything at once. Politics, as I have said many times, is the art of compromise. Someone is always unhappy in any political system - in any system of any kind. Anything relying on humans is imperfect. The goal is to make as many people as possible tolerably happy.

Consider the history of civil disobedience, a popular buzz word here at Evergreen these days. Stealing a bagel from Fine Host is not civil disobedience. Drinking a beer is not civil disobedience. If you are genuinely protesting the legal drinking age, get 30 people under 21. Call a paper, even if it's just the CPJ. Call the cops. Inform both of them that you are drinking to protest. The cops will then arrest you; don't fight it. Remember, you're fighting for a cause. (They will ticket you if you just drink; refuse to hand over your beer.) Your actions will then get a wider scope than a paragraph making fun of you in Blotter. Congratulations. You have just participated in civil disobedience.

That's if you can't get change within the system. The first step is a petition. Those who work within the system accomplish more for their

cause than those who try to overthrow it. Consider Emma Goldman. She's a famous anarchist, but the United States still stands. Consider Martin Luther King versus Malcolm X. Malcolm X (before he went on the hajj) advocated violent overthrow of the white establishment. While he raised the pride of black men, he accomplished little that would improve the basic conditions in which they lived. Martin Luther King, however, did a little at a time, as did his aspect of the Civil Rights Movement. They tackled one issue and stuck to it until it was finished. They peacefully boycotted buses, integrated schools, and fought for the right to vote - that right that we are encouraged to treat so cavalierly.

In fact, the schools were integrated first because of a court case - Brown vs. The Board of Education of Topeka, Kansas. The lawyer for the prosecution, among the first black lawyers to try a case in front of the Supreme Court, went on to be the first black on the Supreme Court: Thurgood Marshall. By working within the system, he gained a position of power that permitted him to attempt to make things better for all Americans, regardless of gender or ethnicity. (Scientists from the Human Genome Project have proven that race is not a biological concept.) Thurgood Marshall was one individual working within the system who improved it.

As a woman, I find the right to vote important because of the decades of struggle to achieve it. I think of Susan B. Anthony and Elizabeth Cady Stanton, who spent their entire lives fighting for the right that the anarchists wish me to throw away. Neither of those women lived long enough to see that right made part of the United States Constitution. Blacks fought similar battles. The original California State Constitution forbade voting for "idiots, convicts, and the Chinese." Japanese-born Americans were not allowed to become citizens of the United States before World War II, which meant that they could not vote. Generations of people have fought for your right to vote. Americans have fought and died for your right to say that you don't like your country. Learn your history; fight the system from within.



BY EMILY DILLING

## High School Dances at Evergreen?

I remember going to junior high and high school dances. Mostly, I went out of boredom or peer pressure, but among the other reasons, everyone walked into the gymnasium with the hope of a romantic interface with their preferred sex. But since I've come to college, all that has changed; the dances are now called parties, and the hope of physical interaction with the object of your affection is much

more likely because these parties have BEER.

Now that I think about it, that's pretty much the only difference between high school functions and house parties: the presence of beer. And what would these parties be without beer?

Well, maybe the chicks that always dance on tabletops wouldn't be so excited about attracting attention to themselves, or at least they wouldn't feel as though they had much of an excuse to do so. There wouldn't be a crowd of people being rude to each other and pushing to get to the almighty keg, and perhaps people would talk and get people to go home with them because of their stellar personalities instead.

Now, don't get me wrong. I like beer. And free beer is always a nice gesture on anyone's part. But lately that gesture hasn't been appreciated, and there is nothing communal or social about these parties. They have become a medium in which one gets drunk as quickly as possible so that their skewed drunken perceptions are those of frivolity and merriment.

At least in high school, you know you're not having fun.

## Is Carbon Dioxide Guilty of Global Warming?

by Andrew Bucher

Carbon dioxide is emitted through fossil fuel-burning machinery and institutions. This causes a major concern regarding global warming. Scientist are very concerned to say the least, because the potential is catastrophic. Global warming could devastate the world in epic proportions. However, some scientists and policy makers are hesitant to make any long-standing regulations, because there are too many uncertainties with respect to global warming.

One of the uncertainties is that we do not know whether changes in the earth's cloud cover will enhance the warming effects of carbon dioxide or offset them. 98% of total warming of the earth is due to the water vapors and clouds in the atmosphere. Small changes in the allocation of the water in any form could overcome the impact of the built-up carbon dioxide. It is ironic that all the scientists who are worried about the potential implications of global warming from carbon dioxide are using atmospheric models that do not accurately incorporate the effects of the water vapor.

It is undeniable that there is a

relationship between carbon dioxide and warming. This does not prove that the carbon dioxide caused the warming. Scientists have performed extensive research in Antarctica and Greenland where there is an abundant supply of old ice. They have been able to measure the level of carbon dioxide in the ice that goes back many years. The studies showed that warming preceded, not followed, the buildup of carbon dioxide. How can built-up carbon dioxide cause warming when the warming came first?

Lastly, carbon dioxide is helpful to plants. People who own greenhouses purchase carbon dioxide to enrich the enclosed atmosphere to enhance plant growth.

Global warming is a reality that needs immediate attention. It would be in all our best interests to stop and reverse the effects. Blaming carbon dioxide is like burying our head in the sand. We refuse to admit that global warming is not caused by carbon dioxide. To find the remedy, we must cross-examine the elements that are suspect, not the one that has been found innocent!

## Sustainable Forestry

by Will Hewitt

The Evergreen woods are a sacred place where students and members of the larger community go to find peace and admire the quiet living complexity of a forest ecosystem. I have spent countless hours wandering the anarchic maze of trails between Driftwood road and the beach, where the oldest trees grow. The woods have taught me as much as the classroom has. There, I learned to identify many native plants: red cedar, big-leaf maple, alder, Douglas and true fir, western hemlock, salal, Oregon grape, elder, sword fern, etc. Many of these plants, like nettles and salal, are edible, or, like elder, have medicinal properties. Two years ago, when I was claustrophobic, crazy, and sick of our cramped domesticated comfort support system; I dispensed with most of my possessions and went to the woods for solitary space and healing. Near my campsite lay a cedar recently snapped and blown over by wind. I bent the green wood branches and shaped them into a wigwam frame. It was spring, at the tail end of the rainy season. Dry wood for my (illegal but small, safe, and carefully tended) fires was always easy to find: the lower branches of cedar trees die and dry up, but stay on the tree, sheltered by foliage above. To pay rent, I cleaned up the trash of careless and disrespectful campers, the ones who set up near the road and won't take ten minutes to pack their trash to the nearby dumpsters of Housing's alphabet soup. Although technically illegal, that was one of the most valuable experiences of my life. The forest is like any other teacher: you must approach it with respect and willingness to listen. The Evergreen woods are a special place for everyone who spends time there. We are lucky to have this amazing park.

The Sustainable Forestry program has the creation of a "demonstration forest" on a 7.5 acre section (1% of forested campus land) near the organic farm. This raises challenging questions and issues. It is not a simple, black and white situation. The image of chainsaws biting into the living flesh of trees disturbs any environmentally conscious person. As a Northwest native, I have been surrounded by ugly patchwork scars, chopped stumps, and torn earth all of my life. Clearcutting is rape; yes, it is that blunt and simple. However, the proposed demonstration forest would be a far cry from the profit-motivated assaults of Weyerhaeuser, Pacific Lumber, and their ilk. Thought and planning are being done to minimize environmental impact. One of their goals is to aid the creation of late successional or "old growth-like" habitat. To this end, only medium-sized trees would be cut. At least 60 trees would be left per acre. Some snags would be left standing. Trees would be

cut, hauled to a short, un-graveled access road, and milled on site. Waste wood from the milling process would be left to decompose. Lumber would be used "either on campus or in area schools." (For more detailed information please contact the Sustainable Forestry program.)

To understand the effects of such a forest management plan, we must examine context. With the notable exception of some areas near F-lot and the beach, Evergreen's woods are a classic example of the result of clearcutting. The forest grows how it is because people came and cut all the trees down, then either didn't replant or planted too many trees of the same species (Douglas fir) too close together. In either case, we have a young forest where trees are crowded. Therefore, they grow tall and spindly in a constant struggle for space and light. Killing some trees would allow others room to spread and thrive. It is not a matter of improving on nature; it is violent intervention to facilitate a healing process. The scab and wound, the current imbalance and strife, are direct results of human actions.

Wood is used on campus by the wood shop, Facilities, and Housing. Much of this wood comes from extremely unsustainable sources. The wood shop does conscientiously buy a lot of FSC certified wood (Forest Stewardship Council certification is roughly analogous to organic certification). However, the shop also sells tropical hardwoods, such as mahogany, bubinga, purple heart, yellow heart, lacewood, zebra wood, and paduk. These woods are definitely unsustainably harvested, and possible even illegally cut from parks and protected areas. Mahogany was recently considered for the endangered species list. Shipping wood from South America, Africa, the Eastern U.S. (hard maple, ash, incense cedar, black walnut, etc.), or Canada is resource intensive. If some of the wood used by students and workers at Evergreen could be grown, harvested, and milled right here, that would be a significant step toward efficiency, self-sufficiency, and sustainability. The major

See Hewitt on page 16

and Power Relations of TESC Politics

# Hey all...

The Cooper Point Journal is closing down shop for Spring Break, so I'm going to the zoo to watch penguins. But while you're all sleeping and recuperating, or doing whatever it is you'll be doing, I've got an assignment for you. Write something about an issue that's important to you and bring it to the CPJ office, CAB 316, by noon on April 2nd and let the world know how you feel.

# MAYAN COSMOLOGY

By Courtney Haedt

MOON 9

## The Solar Jaguar Moon of Intention

This month's animal guide is the jaguar. Contemplate feline energy, with its sleek beauty, piercing glare and able body. Imagine yourself akin to the nature of the great cat hunter, seeking what you need to survive and going after it with quiet methodical purpose. Observe your desires and watch how they move, what pattern they travel in. Wait until you know the time is right to pounce and claim your prize. Stretch and purr and paw as you admire your markings and feel the strength within your shifting form.

Completing the Wavespell of the White Worldbringer- Equalizing, Opportunity, Death. Bring your fears into perspective and release them. Balance your energy. Death is the opportunity for new life. Give birth to yourself as you let go of old patterns.



**Thurs. March 15**  
BLUE RHYTHMIC  
MONKEY- KIN 71-  
Day 9, Moon 9

Tone 6- Claim with bold command the path you are walking. Be fierce yet lighthearted. I organize in order to play - Balancing illusion - I seal the process of magic - With the rhythmic tone of equality - I am guided by my own power doubled.



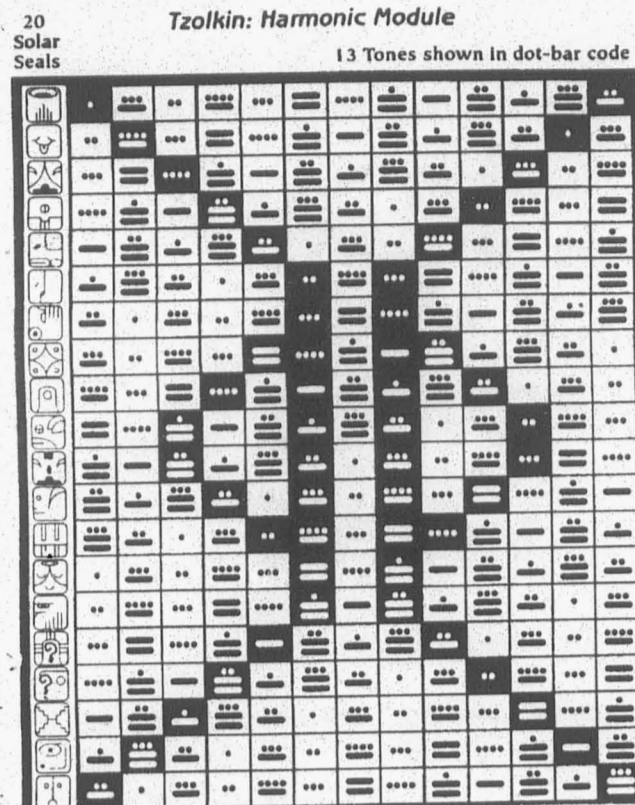
**Sat. March 17**  
RED GALACTIC  
SKYWALKER- KIN 73-  
Day 11, Moon 9

Tone 8- The essence of your ideas emerge as a tangible model for further creative work. I harmonize in order to explore - Modeling wakefulness - I seal the output of space - With the galactic tone of integrity - I am guided by the power of vision.



**Mon. March 19**  
BLUE PLANETARY  
EAGLE- KIN 75-  
Day 13, Moon 9

Tone 10- This is the completion of a thought; savor its conceptual interpretations. I perfect in order to create - Producing mind - I seal the output of vision - With the planetary tone of manifestation - I am guided by the power of abundance.



**Fri. March 16**  
YELLOW RESONANT  
HUMAN- KIN 72- Day  
10, Moon 9 <PORTAL>

Tone 7- Connect with your inner self, becoming your own inspiration. I channel in order to influence - Inspiring wisdom - I seal the process of free will - with the resonant tone of attunement - I am guided by the power of flowering.



**Sun. March 18**  
WHITE SOLAR  
WIZARD- KIN 74- Day  
12, Moon 9

Tone 9- Take purposeful action to master your creative self, realizing fulfillment. I pulse in order to enchant - Realizing receptivity - I seal the output of timelessness - With the solar tone of intention - I am guided by the power of heart.



**Tues. March 20**  
YELLOW SPECTRAL  
WARRIOR- KIN 76-  
Day 14, Moon 9

Tone 11- Allow yourself to exist in freedom from conflict. Release judgement. I dissolve in order to question - Releasing fearlessness - I seal the output of intelligence - With the spectral tone of liberation - I am guided by my own power doubled.



**Wed. March 21**  
RED CRYSTAL EARTH-  
KIN 77- Day 15, Moon 9  
<PORTAL>

Tone 12- Cooperate with the infinite, aware of your connection to all the universe. I dedicate in order to evolve - Universalizing synchronicity - I seal the matrix of navigation - With the crystal tone of cooperation - I am guided by the power of universal water.

## The Board of Trustees Needs You!



Are you interested in being a part of the decision making process at TESC?

One Evergreen student per year is selected to be a voting member of the Board of Trustees (the official governing body at TESC). The student serves a one-year term and is responsible for representing the views and concerns of Evergreen students.

Pick up an application at the Student Activities Office front desk, CAB 320.

**Deadline for applications is Tuesday, April 3 at noon.**

Please call extension 6220 to find out more about being a student trustee, about the selection process, or the role of the Board of Trustees.

# help decide who the 2001-02 editor will be

**Friday, March 16 12pm CAB 315**

**Communications Board** will be conducting interview sessions open to the public as spectators only. Following these open interviews will be closed deliberations.

**Friday, March 16 4pm CAB 316**

**Interviews** Students will interview each of the two editor candidates using questions that were devised Friday, March 9. This will take about 90 minutes.

**Friday, March 16 6pm-ish CAB 320**

**Deliberation** Students will discuss the strengths and weaknesses of each candidate and attempt to reach consensus on a recommendation to the CPJ advisor on which candidate to appoint editor for 2001-02. This can take up to four hours.

## Where to find out about each candidate:

The application packet of each candidate is on the bulletin board across from the CPJ, CAB 316. The two candidates are WHITNEY KVASAGER and COREY PEIN. It is highly recommended that students read the applications before attending the meetings.

# Tennis Starts Season

by Shasta Smith

The men's tennis program is going strong. They have opened the season with a 500 record 3 and 3. The 7<sup>th</sup> the men lost 7-0 to the University of Puget Sound. On the 9<sup>th</sup> they turned around and beat Pacific 4-2. On the tenth, the men played a double header opening the day against Lewis and Clark with a loss 4 to 3. Neil Ahern and Mike Schor won their singles matches and both the number 1 and the number 2 doubles teams won. Later in the day, the men beat George Fox 5-2. Mike Butte and Will Tubman lost their singles matches for the second time that day but Ahern and Schor stayed strong giving the team much needed wins. On the doubles side the number one team of Tubman and Schor lost 8-5 while the number two team of Ahern and Butte pulled through 8-6.

On the women's side, the women are struggling to find that first win of the season. They suffered a loss when Molly Erickson went down with an injury.

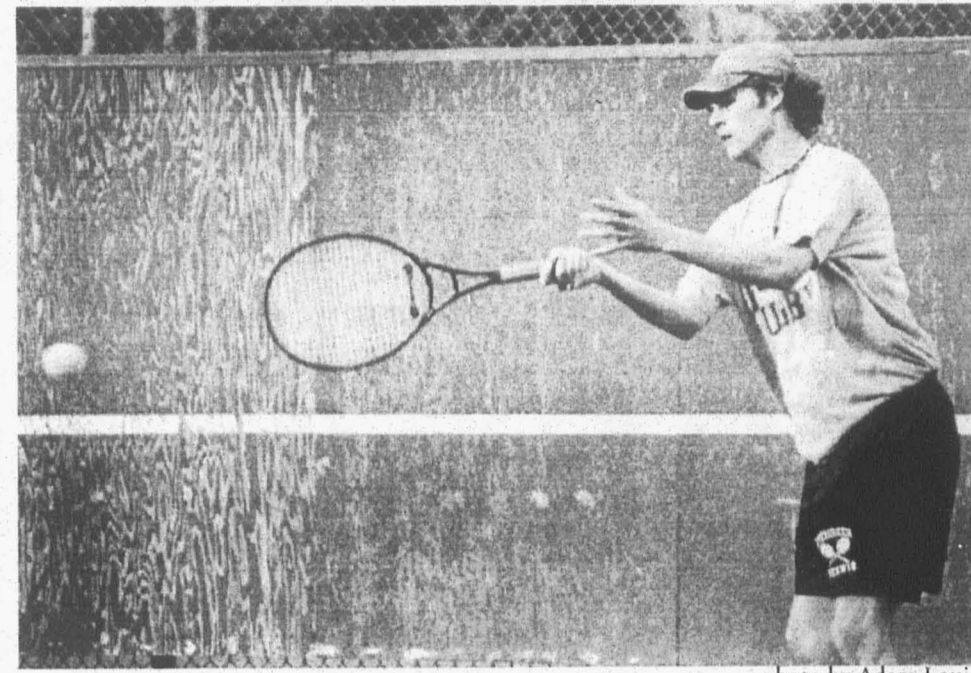


photo by Adam Louie

Will Tubman, the number two singles player for Evergreen, has played some tough matches in the 2001 tennis season. Tubman and Mike Butte trade off with Neil Ahern and Mike Schor for the number one doubles spot.

Missing Practice

by Shasta Smith

Athletes have few problems when it comes to game day. Allowances are made, make up work is created, or equivalent alternatives can be explored. After all, everyone, almost everyone--wants to see their school win its games. The problem lies in getting student athletes to practice.

Scheduling conflicts have arisen between classes and certain teams practice times. The problem of low numbers at practice, or students leaving for academic-related reasons is affecting the women's crew team, as well as the women's rugby team. This problem has also plagued soccer in the past and was noticeable to the women's basketball coach. For a team to be successful, every member, from the lowest player on the depth chart to the star of the team, have to practice together consistently.

One coach commented that school schedules are the biggest conflicting element to the numbers in practice. What is the solution to this? How do we get the numbers out to practice? I don't think special classes for athletes should be made, but what is the solution? Should the sports administration get together with the academic administration to help resolve these problems?

Some coaches move their practice times to early morning, later in the night, or have a varying schedule throughout the week to get the largest turnout for practice. This is effective, but is it the only, or the proper, solution to scheduling conflicts?

I believe the answers to these problems lie in the communication between student athletes, faculty, and the sports administration. That dialogue needs to start amongst the student athletes. How do you feel about your teammates leaving? What can we do about it? The Evergreen Athlete's Union is the perfect place for this to begin. Write me your thoughts on the issue. You can email me at smisha13@evergreen.edu.

# THE INTERVIEWS: JOHN BARBEE

by Shasta Smith

I am talking with John Barbee, the head coach for the Men's Basketball team; he is also the director for leisure education. This is a wrap up interview to the 2000-2001 basketball season. (If you watch Shasta's Evergreen Sports Show, you have seen John Barbee's interview on show number one.)

CPJ: So, John, could you talk a little bit about how the season went?

John: I think overall the season went pretty well; we saw some improvement, some growth, some continuity, some camaraderie--all those things you talk about when you talk about teams. I think we epitomized that this year. We started off pretty slow; we lost five of our first six games, but they were on the road so that made it difficult. Late in the season, we turned things around and started to play a little bit better. We had a bunch of new guys. We turned it around and ended up nine and nine in conference and made it to the playoffs. Definitely, we're pleased with the outcome.

CPJ: Were injuries a factor this year?

John: When you talk about adversities, we were a team that had everything, whether it was injuries or whether it be some off-the-court things where guys had to take personal leaves of absence. Just the little things that break down a team a little. It's just problems in life, so to speak. But I definitely think that played a factor in the up and down of the season. But once we had everyone together and healthy, 100%, we were pretty tough.

CPJ: Did you have any expectations coming into the season? Did you have any idea how it was going to go?

John: On paper, we were as talented, and we still are, as talented as you will find. But one of the things is we brought in so many new guys--a couple of guys that sat out last year--

and our expectation was, we wanted guys to know each other, get to feel comfortable, learn our system, get acclimated to Evergreen--its environment--and as far as that goes, that was very successful. The problem with that is you have to go through the growing pains. So we felt like we weathered the storm this year, and we have high expectations for next year. We have nine guys coming back. I think it's going to be a very veteran-orientated group; guys who have been there, who have been through the length of the season. They know me; they know my style. We're excited about next year. Obviously, losing Spencer is going to hurt, you know, because you are losing a three-time all-American, but it is a passing of the torch, so to speak.

CPJ: What's the top moment of the season, and what's the bottom moment?

John: The top moment is probably in conference, when we were on a little bit of a roll and we had everybody healthy. We were playing. Nobody wanted to play us, just because you didn't know--I mean, we were playing great basketball. You just didn't know what team you were going to see out there. And just knowing that people were somewhat intimidated by us, they knew, "Hey, this team--they're playing really well, they're hot right now, they're on a hot streak." And just having that factor is a good feeling, knowing that we have fifteen guys. It was the first time all year we had everybody. That is probably the high moment as far as from that standpoint. The low moment. I think that Eastern Oregon game, when we were on the road up 29 points with 15 minutes to go, and you blow it, you know, you lose at the buzzer, so that was probably the low moment.

CPJ: That was half way through the season . . .

John: That was in early February...late January...just before the halfway

point of the league. But from there we saw the character of the guys come out after that. It's kind a like...that's unheard of, to blow a lead like that, but the guys responded and played well. We bounced back; it took us a game or two.

CPJ: Did the number of games affect you this season? It was higher than it had been in previous seasons.

John: I think that does, just because of the longevity of the toll it takes on your body. That again goes back to having a lot of new guys, guys not understanding that, "Hey, you know what, the next six months is just gonna be torture on your body day in and day out, and you gotta learn how to take care of yourself." It's easy to say, "No problem. I'm gonna be in shape," and all that kind of stuff, but your going out for six months straight day in and day out it kind of wears on you. And so that's something the guys are going to know next year when they come back. And in the off season, they've got to do a good job of getting in the weight-room, you know, keeping themselves in shape and improving their stamina...but definitely that was an adjustment. One of the things is it seems like forever ago that we were in New Orleans. It doesn't seem like that was part of the season, because it was five months...four months ago. So that played a little bit of a factor, I think.

CPJ: You read it here. Good luck to the men's basketball team next season. With the number of returners, they look to have a successful season. It's good to have programs building and getting better and better and building Evergreen's name and reputation. Thanks John.



Photo by Brandon Beck

## WOMEN'S RUGBY

by Shasta Smith

The women's rugby team is hoping to get a game with the University of Portland. UP's new women's program is on par with our women, who are rebuilding the team this year, so it should be a great match-up. The women almost have a full squad. What they lack is forwards; they need some big women to come out and help power them to a win.

## CREW

by Shasta Smith

The 17<sup>th</sup> starts the meat of the men and women's crew team season. This is going to be a huge meet, with UPS, Seattle Pacific, Seattle U., and Western in attendance. The crew teams have regattas and duel meets until May when they wrap up their season down in California. Coach Starks said that the team is looking faster everyday as they raise their training level to prepare for competition. "We are working a lot harder," said Coach Starks, "working on boat speeds, a lot more interval work, and getting them to hold the racing stroke rate." Women's races run 7 to 8 minutes for a 2000-meter run. The time should drop as the season progresses. The men should start at around a 6 to 7 minute 2000, with improvements as the season goes. The team hasn't done 2000's in practice yet, so the coach isn't quite sure how it's going to go.

The women's team lost some of its members to spring classes, which will hurt the squad. The remaining women are beginning to gel into a cohesive rowing unit. Look for the rowing team to surprise some competitors.

RETIREMENT   INSURANCE   MUTUAL FUNDS   TRUST SERVICES   TUITION FINANCING

## Tax-deferred solutions from TIAA-CREF can help you reach your retirement goals faster.

Call us for a free tax-savings calculator

When you're investing for retirement, the adage: "never put off until tomorrow what you can do today" doesn't apply to taxes.

That's because investments that aren't eroded by taxes can add up to significantly more money for you--money you can use to supplement your pension and Social Security.

Let our consultants show you all the advantages of tax deferral, or call us for a free tax-savings calculator.

Supplemental Retirement Annuities (SRAs), IRAs and other tax-saving solutions--along with TIAA-CREF's low expenses and solid history of performance--can help you invest tax smart today so that you can reach your retirement goals faster in the years to come.

\*Note: Under federal tax law, withdrawals prior to age 59½ may be subject to restrictions, and to a 10% additional tax.

**TAX DEFERRAL MAKES A DIFFERENCE**

\$102,068  
Tax deferred savings after taxes

\$67,514  
After tax savings

\$100 per month for 30 years

In this hypothetical example, setting aside \$100 a month in a tax-deferred investment with an 8% return in a 28% tax bracket shows better growth after 30 years than the same net amount put into a savings account. Total returns and principal value of investments will fluctuate, and yield may vary. The chart above is presented for illustrative purposes only, and does not reflect actual performance, or predict future results, of any TIAA-CREF account, or reflect expenses.

Ensuring the future for those who shape it.™

1.800.842.2776

www.tiaa-cref.org

For more complete information on our securities products, call 1.800.842.2776, ext. 5509, for prospectuses. Read them carefully before you invest. • TIAA-CREF Individual and Institutional Services, Inc. and Teachers Personal Investors Services, Inc. distribute securities products. • Teachers Insurance and Annuity Association (TIAA), New York, NY and TIAA-CREF Life Insurance Co., New York, NY issue insurance and annuities. • TIAA-CREF Trust Company, FS# provides trust services. • Investment products are not FDIC insured, may lose value and are not bank guaranteed. © 2001 Teachers Insurance and Annuity Association - College Retirement Equities Fund, New York, NY 0104

## ATTN: WOMEN'S SOCCER PLAYERS

The women's soccer team is going to start up spring training April 2.

Coach Arlene McMahon will be running training three days a week and anyone interested in playing is welcome, even men. Coach McMahon will also have her team weightlifting three days a week.

**Any girl interested can call Arlene at ext. 6538 here on campus.**

**Once again, the first day of spring training is April 2<sup>nd</sup> at 2 PM.**

## FREE PREGNANCY TESTS

**Now at all Planned Parenthood health centers**

If you've missed a period or think you're pregnant, don't wait. Find out. Our medical staff can help.

- Totally confidential
- Just walk in
- Have your results in minutes

Look in white pages or check out our website for center near you.

**Planned Parenthood®**  
**1-800-230-PLAN**  
**www.ppww.org**

## Paint-4-Fun

Ceramic Painting Studio

We have a variety of Bisque, Paint, Supplies, Stencils & Classes! No sitting fee. No appointment. No experience necessary!

**360 786-5719**

400 Cooper Point Rd. Capitol Village Suite #27  
ACROSS FROM SAFEWAY

## Vics Pizzeria

233 DIVISION ST NW      (360) 943-8044

Ana makes a lovely vegan sauce!

## On the Places You'll Go

on Intercity Transit!

Show your Evergreen student ID when you hop an I.T. bus and ride free. It's that easy! Skip the parking hassles, save some cash, and be earth-friendly. I.T. is your ticket to life off campus!

For more info on where I.T. can take you, pick up a "Places You'll Go" brochure and a Transit Guide at the TESC Bookstore. Or call I.T. Customer Service at (360) 786-1881 or visit us online at [www.intercitytransit.com](http://www.intercitytransit.com)

Fares paid through student programs.

## CLASSIFIEDS

### Summer Jobs

Summer jobs in Unique Pacific NW Island Location: Johns Island, WA. Coed summer camp, est. 1935 focused on community living. Hiring instructors, counselors and support staff. 10 week contract. June 16th - Aug 24th, 2001. Contact: Camp Nor'wester, 62B Doe Run Road, Lopez, WA. 98261. (360) 468-2225. [norwstr@aol.com](mailto:norwstr@aol.com). Or check out: [www.norwester.org](http://www.norwester.org). Join us for a summer you'll never forget!

### Funds

**Clubs • Student Groups**  
Earn \$1,000-\$2,000 this semester with the easy Campusfundraiser.com three hour fundraising event. No sales required. Fundraising dates are filling quickly, so call today! Contact Campusfundraiser.com at (888) 923-3238, or visit [www.campusfundraiser.com](http://www.campusfundraiser.com)

Deadline for text and payment is 3 p.m. every Friday. Student Rate is just \$2.00 for 30 words. Contact Jen Blackford for more info. Phone (360) 867-6054 or stop by the CPJ, CAB 316.







# WOULD YOU LIKE TO BE NEXT YEAR'S

# S & A BOARD COORDINATOR?

- 19 Hours per Week
- \$6.72 per hour
- Increase Your Skills in:
  - Management
  - Group Facilitation
  - Consensus Decision Making
- Work With Great People
- Gain Valuable Experience



FOR MORE INFORMATION, STOP BY  
CAB 320, OR CALL X6221.

## APPLICATION DEADLINE: FRIDAY, APRIL 6, 2001

TIME IS RUNNING OUT!



# CALENDAR

## Thu, Mar 15

Darlene at the Student Health Center would like you all to know that the BLOOD BANK will be on campus today from 10 A.M. to 4 P.M. with time off for lunch. Call x6804.

7 P.M.  
Wanna be on TV? *Shit, yea.* Dance O' Dance invites one and all to participate in their live monthly taping. Go to Studio A, 440 Yauger way at this time. Call 866-4524, or visit [www.danceodance.com](http://www.danceodance.com).

In the "Edge." In "A Building." *Yea.* See *Tough Guise*, a "radical film that identifies the relationship between the images of popular culture and the social construction of masculine identities..." A discussion will follow. *Yea.* Call x5517.

7:30 P.M.  
AT the Olympia Center. IN room 101. SPEAKING is Dr. Nalini Nadkarni, TESC faculty. LISTEN to "Views from the Top: Ecology and Conservation of the Rain Forest Canopy." Presented by the Olympia World Affairs Council.

## Fri, Mar 16

6:00  
At the TESC Tacoma Campus, classical pianist Dr. William Chapman Nyabo and gospel organist Dr. Ruth Kelly play a benefit for homeless women and their children. \$25. Call 383-7791.

## Sat, Mar 17

8 A.M.  
The Black Hills Audobon Society rise bright and early this morn', looking hearty and athirst to go traipsing about the river-dale. All are welcome to explore the Centralia and Chehalis wetlands. The party will assemble at Centralia Park and Ride, yonder.

Oh yeah, and all day, it's muthafuckin' SAINT PATRICK'S DAY!!!! WOOOO!!! As an American-Irish, this day of the year means a lot to me. I plan on flying to the east coast the evening of the 16th, so I can commence that celebration that much sooner. I will spend the day in the historic Irish ghettos of New York and then the night in the gutter.

## Mon, Mar 19

6:30  
"Curious about astrology? Don't know where to begin? Well, here it is." Radiance Herbs and Massage. Rosie Finn. 705-1430. Free. Amazing.

## Tue, Mar 20

7 P.M.  
Every third Tuesday, which happens to be this day, people gather to "watch" and discuss "videos" at Traditions Cafe. These "videos" are related to the environment or social or economic justice, "etc." Come partake. Call Diane at 866-8444.

## Oh, What's this?

The group **Community Gardens** provides a space for students and community members to grow food for themselves. The first (general interest) meeting, also mandatory, will be MARCH 21, 6 P.M. to 7 P.M. First come, first serve. Call Madison Cripps at extension 6145.

## Thu, Mar 22

7 P.M.  
Did you know that "[p]ersonalized glycerine soaps are fun and easy to create?" If you did, or even if you didn't (but are intrigued), then go to

Radiance at this scheduled time. They will "...safely melt these soaps and enhance them with a touch of scent, soft natural pigments, and various dried plants." You will "[L]earn more about choosing appropriate aromatic essential oils." "By the time you leave class you will have beautiful soaps to take home." Scrub-a-dub! The \$25 you must pay includes materials. Call 357-5250.

## Mon, Mar 26

This date marks the first Monday of spring break. What are you doing for spring break?

## Fri, Mar 30

7:30 P.M.  
The Playback Theatre whoops it up tonight at Traditions Cafe. See *Stories of Caring for The Land*. The Heartsparkle Players collaborated with the South of the Sound Community Farmalnd Trust for this one. They suggest you donate \$5 or \$10 bucks, but they won't hold you to it. Call 943-6772.



## Student Group Directory\*

<b>Amnesty International</b> International human rights org. working to free prisoners of conscience, ensure fair trials, and promote justice. Meeting times: 5 P.M. every Monday in CAB 310 More info: x6724	<b>Evergreen Animal Rights Network</b> To promote the ethical treatment of animals. Meeting times: 5:30 every Tuesday in CAB 320 More info: Laurel and Tom 866-6000 ex.6555	More info: Whitney Bindreiff 888-2166 or x6636 <b>Giant Robot Appreciation Society</b> Evergreen's Anime Club! Screenings Friday, 8 P.M. at the Edge More info: Ken Koontz squirefox@hotmail.com	<b>Umoja</b> An activities and support group for all students of African decent. Meeting times: 1-3 P.M. on Feb. 21, March 14, April 4, 18, May 2, 16, 30 More info: Umoja office, x6781; Cossetta Stroud, (360) 455-0470; Loretta Bradley-Allen, (360) 352-9906
<b>AFISH</b> Advocates For Improving Salmon Habitat welcomes all interested in environmental & salmon issues. Meeting times: 4 P.M. Mondays in CAB 320 More info: CAB 320 or x6105	<b>Evergreen Dance Team</b> Meeting times: Wednesday, 2-4 P.M. in CRC 316 and Thursday 3:30-5 P.M. in CRC 116	<b>MEChA</b> The Chicano student movement of Aztlan strives to create a space where members can educate themselves, inform others, and confront issues. Meeting times: 2 P.M. every Wednesday More info: x6143	<b>WashPIRG</b> We run environmental, social, and consumer campaigns. Meeting times: 4 P.M. Wednesday in Lecture Hall rotunda More info: Rebecca x6058 evergreen_washpirg@hotmail.com
<b>ASIA</b> Asian Students in Alliance welcomes everyone. Meeting times: 1 P.M. every Wednesday in CAB 320 More info: Emiko Atherton, Miral Ghimire at 867-6033	<b>Evergreen Investment Club</b> Meeting time: Thursday, 2:30 in CAB 315 More info: Andrew Bucher, Adam Smith-Kipnis, 786-9161	<b>The Middle East Resource Center</b> Meeting times: 4 P.M. Wednesdays in CAB 320 in office 15. More info 867-6033	<b>The Wilderness Center</b> We run trips outside (rafting, rock climbing, hiking, snowshoeing) as well as skill
<b>Bike Shop</b> We are a volunteer operated, do-it-yourself bike shop. Meeting times: Call or stop by; schedule is on door More info: Ari or Jayro at 867-6399	<b>Evergreen Swing Club</b> We teach East Coast Swing and Lindy Hop basics. We welcome beginners, and you don't need a partner! Meeting times: Friday, 7 P.M. on the first floor of the library More info: David, 866-8324; Kristina, 867-4939	<b>Evergreen Medieval Society</b> Students interested in recreating medieval martial arts, crafts, and performances. Meeting times: 5:30 P.M. every Thursday in CAB 320 More info: medievalsociety@mail.com 866-6000 or x6036	<b>Women's Resource Center</b> A resource center that provides meetings, a library, events, and a drop-in center. Meeting times: general meeting Monday, 3 P.M.; Zine meeting Monday, 5 P.M.; Evergreen Cliteracy Foundation, Wednesday 3 P.M. More info: x6160
<b>Capoeira Angola</b> Meeting time: Thursday 6:30 P.M. in Lib 4300 More info: C.J. Hanekamp at 866-4811 or hanekamc@evergreen.edu	<b>Evergreen Queer Alliance</b> Meeting times: 5 P.M. Tuesday (Gen. interest) in CAB 314; 5 P.M. Wednesday (Film Fest planning) More info: 867-6544 evergreen_queer_alliance@hotmail.com	<b>Mindscreen</b> Free movies on campus Group meetings 3:30 P.M. every Wednesday in CAB 320; Free movies every Wednesday at 5:30 P.M. in Lecture hall 1 More info: x6480	*This list is not comprehensive. If you want your student group listed, drop off your information at the CPJ (CAB 316)
<b>Common Bread</b> We are a Christian Community working for justice and peace. Meeting times: 5 P.M. every Monday in CAB 110 More info: Julie Boleyn 943-9144	<b>Feminist Majority Leadership Alliance</b> We work towards the goal of having political, economic, and social equality for women. Meeting times: 1 P.M. every Friday	<b>Slightly West Literary Magazine</b> We publish TESC's Literary Mag. Meeting times: 2 P.M. Monday, 9 P.M. Thursday More info: Patricia Kinney, Jen Levinson x6480	