

# Cooper Point Journal

January 23, 1992 Volume 22 Issue 12

## Senate hears student views on tuition increases

by Stephanie Zero

Evergreen students packed the first two rows of a Senate Ways and Means Committee hearing Monday to express distress over a proposed 29.7 percent TESC tuition hike and any further cuts in the college's budget.

In their testimony, students urged senators to come up with creative alternatives to a tuition increase and to avoid cutting college funding.

Two professional lobbyists commented afterwards they thought Evergreen student testimony made a positive impression on the senators.

The Senate was still working on its revision of the 1991-93 state spending plan when the hearing was held. The Senate committee expects to release its plan in a couple weeks.

"There is still opportunity for more student input," says Jennifer Jaech, Evergreen's legislative liaison.

Students can voice their opinion by calling the legislative hotline (1-800-562-6000) or by writing to their state representative and senator.

The proposed tuition increase and the cuts are the result of a \$694 million drop in state revenue. Based on state revenue forecasts, continuing revenue decline could push state budget cuts as high as \$1 billion. Revenue began

declining in July at the start of the 1991-93 biennium.

To prevent further cuts in the budgets of state colleges, Gov. Booth Gardner has proposed tuition increases. The highest increase was proposed for Evergreen which would pump state resident tuition up 35 percent. The 35 percent is made up of Gardner's proposed 29.7 percent tuition surcharge and a 5.3 percent routine increase.

The House proposal is far more complex. The tuition increase is the same but the proposal gives the Board of Trustees the authority to reduce the increase for in-state undergraduate students and increase tuition for out-of-state undergrads. The House's plan also eliminates budget cuts.

Rather than see Evergreen take another budget cut, the college administration leans towards a fair and equitable tuition increase that covers financial aid concerns, according to Evergreen legislative liaison Jennifer Jaech.

Evergreen took a 2.5 percent budget cut Dec. 1 because of the state's revenue shortfall. At the same time, the Governor ordered Evergreen and other state agencies to brace for a second 2.5 percent cut -- a cut that actually could go higher than 10 percent across the board, according to Steve Trotter, Evergreen's budget officer.

Instead of the second budget cut the Governor decided to raise more revenue by increasing such fees as cable TV sales tax and college tuition.

At the Senate hearing Evergreen student, Stephen Anacker, proposed a simple plan: increase the Governor's gambling and cable tax proposal by \$20 million. This additional revenue would

Your input on how the budget is drafted can be heard if you call the legislative hotline: 1-800-562-6000



Stephen Anacker speaks to the Senate Ways and Means Committee on Monday. photo by Seth Long

offset half of the tuition increase and the remaining increase would be spread evenly between all students.

Before the hearing J.E.B. Stuart Thornton, Evergreen student and intern to the legislature, organized a meeting to prepare students to testify at the Senate hearing.

"At the first hearing I went to Evergreen students had no representation. At the second hearing we had three students, and at this hearing we had six

times as many students representing our view", said Thornton.

As a follow up to the Senate hearing Kim Goforth, Evergreen student, will collect letters about the tuition increase from Evergreen students and deliver them to senators. Letters for delivery to senators should be addressed to Goforth and left at Evergreen Admissions before Jan. 29.

Stephanie Zero covers budget topics for the CPI.



Sean Bender hits a G<sup>th</sup> (we think) while Tom Griffith shrieks at a recent Shark Wig gig in Phase II housing. See related story on page 5. photo by Seth Long

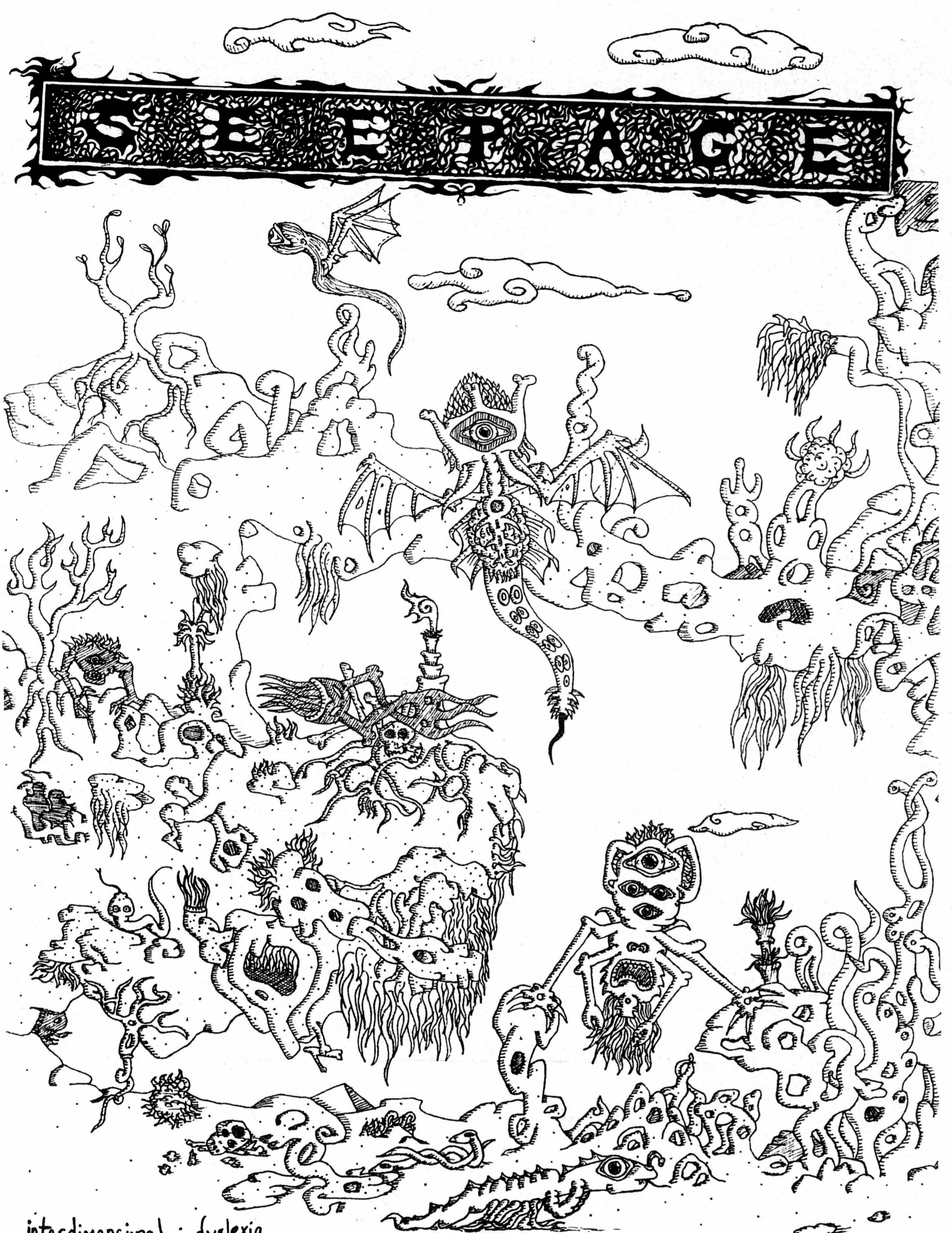
## LIVE from campus housing

Hey Dude... it's rock and roll story, page

Blotter Briefings	2
KAOS and Car-lots	3
In Remembrance	4
Streater	5
Third Floor Math	6
Forward Forum	7
Barb's Naked Lunch	8
Calculating Calendar	9
Idaho's Privates	10
Cat Kenney's Corner	11
Slammin' Seepage	12

The Evergreen State College  
Olympia, WA 98505  
Address Correction Requested

Non-profit Organization  
U.S. Postage Paid  
Olympia, WA 98505  
Permit No. 65



interdimensional · dyslexia

Dear Loyal Readers,  
The Seepage is changing this quarter, we will feature one artist and one writer

per week - if you would like to be featured submit your work to the CPI office by Monday noon. relates to the theme -

by Damian Magista

of the week. Thank you for your support!  
Forever Your Gal,  
The Seepage

# NEWS BRIEFS

## MIT program receives \$300,000

EVERGREEN--The Evergreen State College announced that its Master in Teaching Program received a three-year \$300,000 grant from The Pew Charitable Trusts to expand the program's innovative efforts to prepare teachers for increasingly diverse populations and the changing demands of the classroom.

The grant also directs benefits to local high school students. A major portion of the grant supports a program developed through a partnership between Evergreen's Master in Teaching (MIT) program and the North Thurston School District to provide special training and support to students, especially students of color, interested in becoming teachers.

"We feel very fortunate that the people at the Trusts were impressed enough with Evergreen and the learning community approach for our Master in Teaching program to provide us with substantial support," says Jan Kido, director of the MIT program.

The partnership with North Thurston School District is just one example of the kind of cooperative ventures the MIT program is developing to encourage talented high school students to pursue a career in teaching and to increase access to teacher education programs for students from a cross-section of society. The MIT program also hopes to develop strategies to support practicing teachers.

## Start your own home business

OLYMPIA--Want to launch a home-based business but don't know where to start?

Instructor and local businessperson Kimberly Moore is offering a workshop that can provide you with the basic information you need to proceed.

Her course, "Starting and Operating a Home-based Business" will be held Saturday, Jan. 25 from 9 am to 4 pm at South Puget Sound Community College. Cost is \$50.

Topics will include: What makes a successful business owner; what questions to ask before you start; licensing and tax requirements; resources available to business owners; guidelines for recordkeeping; and the basics of business planning.

For more information about this

## Quote of the Week

**"We're not talking about discrimination or preventing anyone from getting married.... We're talking about death."**

State Senator Linda Smith, proposing that AIDS testing be a prerequisite to get a marriage license in Washington, quoted in *The Seattle Times*, on January 22.

## Volunteers help Refugee Center

THURSTON COUNTY--The Thurston County Refugee Center, a nonprofit organization located in downtown Olympia, reported 8,137 hours of volunteer time donated to its programs in 1991. More than 130 people volunteered at the Refugee Center during the year, including an increasing number of former and current refugee clients.

The Center recruits volunteers to tutor English and computer skills, to assist in covering clerical and reception duties, and to perform maintenance and renovation work at the Refugee Center office. Volunteer and paid positions are also available for persons fluent in a foreign language to act as interpreters and translators.

Volunteers for a vital part of the services offered by the Refugee Center, acting as cultural ambassadors to help refugees adjust to life in their new homeland. To find out how your talents can be shared with a refugee newcomer, call the Refugee Center at 754-7197.

## "Artists Who Teach" exhibited

OLYMPIA--You want mathematicians to teach your kids calculus, chemists to teach chemistry and mechanics to teach auto shop, so of course you should have artists teaching art. Right?

"Artists Who Teach" is an exhibition of 26 works by Northwest high school and junior high school art teachers who subscribe to the notion they are artists first, interested in doing the best of work--a fact that makes them much better

teachers, according to Rudy Martin, director of the Northwest Region Office of The National Faculty of the Humanities, Arts and Sciences, the organization that sponsored the show.

"Artists Who Teach" is on display January 6 - 31 at the offices of the Superintendent of Public Instruction in the Old Capitol Building, downtown Olympia. Artists include Cindra Avery who teaches at Bothell High School; Gail Barnfather, who teaches at Leota Junior High in Woodinville; Jon Lepper, L.E. Ferris High School in Spokane; Wayne Maslin, Leota Junior High; Lynne Saad, Mercer Island High School, and Janet Sonnicksen, Beaverton High School in Oregon. For the month of February, the show will move to The Evergreen State College campus.

"Artists Who Teach" is funded by a grant from the Mellon Foundation and is touring across the state. Galleries or exhibitors interested in displaying the work can call (206) 866-6000, ext. 6247, or Exhibit Touring Services, (509) 359-4331.

## SCA recruiting volunteers

NATIONAL--Celebrating its 35th anniversary this year, the Student Conservation Association (SCA) is offering approximately 1000 expense-paid volunteer positions nationwide throughout 1992 in conservation, resource management, and environmental education. Currently SCA is accepting applications for positions offered for the summer/fall season.

Participants selected for SCA programs contribute from 3-12 weeks of their time and skills towards the protection and management of natural resources within national parks, forests, wildlife refuges, and other resource areas.

Volunteers receive a grant for

round trip transportation to their program area, a weekly stipend to offset living expenses, free housing, and a uniform, allowance, if requires.

Applications received by the following dates increase the chance of acceptance for a position:

March 1, 1992: Positions beginning May-July 1992.

June 1, 1992: Positions beginning Aug-Sept 1992.

SCA offers programs throughout the year. Additional opportunities will be available during the winter of 1992/93.

Anyone interested in participating in or learning more about SCA programs should contact: SCA, P.O. Box 550, Charlestown, NH 03603, (603)826-4301, (603)826-7755 FAX.

## Free state biking maps available

WASHINGTON--The Washington State Department of Transportation is reminding bicyclists that the bicycling map it publishes is distributed free.

"Many users have been sending money for the maps, and this is not necessary," said Cliff Mansfield, WSDOT's Bike Map Coordinator.

The WSDOT bicycling map, titled, "Washington State Traffic Data for Bicyclists," identifies segments of state and interstate highways open for bicycling. It also shows traffic densities on all sections, and roadway shoulder widths. Bicycles are also welcome on most auto-carrying state ferries.

To receive an individual copy of the map and more information concerning bicycling on Washington State highways, highway bike paths and shoulders, write to: Bicycling Coordinator, Washington State Department of Transportation, Transportation Building, KF-01, Olympia, WA 98504-7329, or call (206)753-6095.



Widest Variety of Frames in Olympia

**MOORE**  
EYECARE

MICHAEL D. MOORE, O.D., P.S.  
2600 MARTIN WAY, SUITE C  
357-7899

## URBAN ROCK CLIMBING IN SEATTLE



Spire Rock  
Volunteer Park Water Tower  
UW Climbing Wall  
The Vertical Club  
**SAT. FEB. 1 FROM 11 A.M.**

**\$5 van fee**  
Sign up and pay by Jan. 29 in CRC 210.  
For more info call Rec Sports ext. 6537

# Suspects questioned in car-lot crime wave

by Bryan Connors

According to Sergeant Larry Savage of Evergreen's campus security, a suspect in the parking lot break-ins, a juvenile, has been questioned about, and admitted to, the multiple thefts and vandalism.

"We're still doing interviews with some of the suspects...[But] out the six I've interviewed, only one has admitted guilt," Savage said.

Campus security started the investigation the first week of December, when, according to Savage, "we got a hold of some real good leads."

According to the suspect's confession, the "Ring" would park at the Cooper Glen Apartments, and then, from the woods, stake out the various car-lots (mostly F-lot) around campus.

The variable times and locations of the break-ins/vandalism made security stakeouts unfeasible.

Savage commented that it will probably take ten days to two weeks to gather enough evidence to file charges.

But, as Savage added, "I think one of the interesting things is that until yesterday [Jan. 21] we haven't had a car break-in, since I started my investigation the second week of December."

Bryan Connors will continue to cover security/parking issues for the CPJ.



An unfortunate car in F-lot. photo by Seth Long

# KAOS soliciting donations for satellite dish

by Christine Schuman

Two years ago, KAOS introduced an idea to boost the diversity of its programming schedule: a satellite dish. This dish would allow for instantaneous distribution of programming from various locations around the nation. Talks began, fund raisers were started -- and that seems to be where it stands.

The "big headache," says General Manager of KAOS, Michael Huntsberger, is awaiting the permission for partnership between KAOS and the Evergreen Development Office. With the two working together, KAOS would have further access for gaining fund raising support from Evergreen Alumni, the business community and non-profit organizations in the Thurston County area.

While the satellite dish proposal has been growing for two years, exactly

where it fits onto the Evergreen list of things-to-do is uncertain.

The Masters In Teaching (MIT) program, says Huntsberger, recently received a \$300,000 grant to further develop itself. According to Huntsberger, the MIT program is more recent than the satellite dish proposal. He feels that KAOS has been articulate about the components needed to purchase the dish, and feels the Development Office has placed the ideas somewhat lower on their list of Evergreen priorities. However, he states, "I have no idea how the decision-making process works over there."

With a goal of \$25,000, KAOS has managed to raise \$5,000 towards the completion of that amount. The dish will allow for the access of various live programming and a more diverse program structure. Huntsberger adds, however, that

he hopes for more than that to add to even more extensive options and details to deliver KAOS to its fullest potential. He says, "For a radio station not to have a satellite dish is like a person not having a phone."

Although Huntsberger says they are behind in the fundraising, he seems optimistic (especially once they start working with the Development Office). Through the Top Foods and Storeman grocery stores, they have raised \$300, being given one percent of the total of grocery receipts collected. Other sources of fundraising efforts include The Olympia Film Society, parents, professors and some Evergreen Alumni. Also, some Evergreen employees have given \$5 from every

paycheck to help the station meet its goal.

The purpose of the dish is to give the listener more of a variety of programming. KAOS hopes, upon attaining the dish, to bring such alternative daily newscasts as *The Pacifica*, and also carry many non-KAOS produced shows. But fear not, local program-worshippers; the idea of including non-KAOS produced shows is to complement the local broadcasts -- not shut them out. Huntsberger sees no threat to our local programming friends in the future.

To donate money, or help with the fundraising, contact KAOS in their new office on the third floor of the CAB. Christine Schuman is an Evergreen student.

# Swim team qualifies

by Ruth Frobe

The Evergreen swim teams, now in the second half of the 1991/92 season, competed most recently at the Lewis and Clark Relay meet in Portland on Jan. 11. Many of the Geoducks swam personal best times at Lewis and Clark and, at this point, four women and five men have logged times which qualify them to compete at the District Championships Feb. 27-29.

The women are led by Kristie Copp, Erin Sweet, Michelle Burlitch and Sarah Leonard who comprise the relay team which has qualified for District Championship competition in the 200 medley relay, the 200 free relay, and the 400 free relay. Burlitch has also qualified

in the 200 individual medley and the 100 butterfly, Sweet has qualified in the 100 backstroke, and Copp has qualified in the 100 freestyle. Burlitch, Sweet and Copp have all recorded qualifying times in the 50 freestyle as well.

The Evergreen men will also be represented well at the District Meet, especially in the sprint freestyle events. Geoducks Troy Bolin and Ken "KC" Cheney will compete in both the 50 and 100 freestyle. Pat Long, who swam a personal best time of 26.73 in the 50 freestyle at Lewis and Clark will swim this event, and Nathan Turaski will swim in the 100 freestyle. John Carlson, who swam the 100 butterfly in 1:00.84 at Lewis and Clark has qualified for this district event.

Various swimmers including Erika Parker and Oliver Moffat have recently swum personal best times in their events and will have another opportunity to qualify for the District Championships this weekend as the Geoducks travel to Linfield for a triangular meet with Linfield and Western Oregon State College.

Ruth Frobe is the sports information director, and a real helpful gal.

# SECURITY BLOTTER

Tuesday, January 14

0410: Stop sign at Driftwood Road and the Parkway was reported to be knocked down.

0454: Second floor door of the clock tower was found to be insecure.

0812: Person reported to have injured her head due to a fall at the Library loop.

Wednesday, January 15

0159: Student reported the bookstore's storage room to be insecure.

0514: Green vehicle found to be in a ditch on 36th, near Wesly. Washington State Patrol was advised.

Thursday, January 16

0945: Person reported that she was bitten by a dog in front of the CAB.

1658: Person reported a person making threats to another person.

2153: Non-student reported his vehicle's window broken out while parked in C-lot.

Friday, January 17

2205: Security officer reportedly found a barricade in F-lot.

2257: Resident reported that her room

mate was suspiciously missing.

Saturday, January 18

0227: Fire alarm went off in Lab I due to Central Utility Plant flooding steam into the tunnels under the campus. 911 was called and fire fighters arrived.

0256: Student's experiment items were removed from Lab I's stairwell and put in the proper class room.

1524: Bookstore's intrusion alarm went off. Area was checked but no intrusion was detected.

Sunday, January 19

1645: Resident reported his bike stolen while parked in Modular housing.

1940: Student/resident reported man verbally harassing him four times within the last week.

Monday, January 20 (Martin Luther King Day)

A relatively quiet day for campus security.

Security performed 70 public service (unlocks, escorts, jump starts, etc.) this week.

# Carl J. Schmidt: 1955-1991



The art of Carl John Schmidt. photo by David Mattingly

by Andrew Hamlin  
Carl John Schmidt, an Evergreen student, died of heart failure Sunday, December 28, at his home in Olympia.

# Halvor M. Halvorson: 1919-1992

by Andrew Hamlin  
Halvor M. Halvorson, a founding trustee of the Evergreen State College and eleven-year veteran of TESC's Board of Directors, died Tuesday, January 7, at his winter home in Palm Desert, California. He was 72 years old. A resident of Spokane since 1947, he had worked as a construction consultant in that city since the demise of his own general contracting firm, H. Halvorson Inc., in 1987.

"He was one of the great trustees," said Evergreen's founding president Charles McCann, whom Halvorson helped hire in 1967. "He was enthusiastic, delivered support, and he gave criticism when we needed it."

Washington Governor Dan Evans appointed Halvorson to Evergreen's first Board of Trustees in August 1967, five months after legislation creating the college was signed into law on March 21. He served on the Board until 1972 and was reappointed to a second term, from 1973 to 1979. He was Chairman of the Board for the 1970-71, 1975-76, and 1978-79 school years.

Halvorson also served on the college's Site Selection and Building committees, using his construction expertise to influence Evergreen's highly praised architecture and landscaping. "He had the vision to procure a lot more

He was 36 years old. Schmidt had battled kidney disease for the past six years, and his fatal heart attack came on the heels of a less severe attack several

property than they intended, so they ended up having a lot more room," said his youngest son, Ronald Halvorson of Spokane.

Memorial services were held Saturday, January 11, at St. Mark's Lutheran Church in Spokane.

Born on a farm in Dahlstrand, Sweden, Halvorson immigrated to the United States at age three, graduated high school in Montana, and studied architecture at the University of Minnesota. In World War II he was a forward observer under General George Patton, saw action in the Battle of the Bulge, and helped liberate the Buchenwald concentration camp near Weimar, Germany.

After the war, Halvorson ran a contracting business in Salem, Oregon, before moving to Spokane and forming H. Halvorson Inc. in 1947. Over the next 40 years the company rolled up over half a billion dollars worth of business. Its projects included San Francisco's Letterman General Hospital, the nuclear reactor at Richland, Washington, and the Tecolote Tunnel in Santa Barbara, California, which made the cover of *Life* magazine in 1954.

Survivors include his wife, Mickey, five children, twelve grandchildren, and two great-grandchildren.

weeks earlier. Memorial services were held Sunday, January 5 in Fort Ward State Park on Bainbridge Island, where Carl spent much of his life.

At Evergreen, Carl studied creative writing and made beautiful etched metal jewelry, which, as the announcement of his death tells, occasionally sold but often gave away. Much of his work featured the sea, which he tried to stay close to. He worked as a fish farmer on Bainbridge Island and as a boathand in Port Townsend. He was also a swimming instructor at the Bainbridge Island Swim Club, and a member of the Port Townsend Food Cooperative.

Last year for Valentine's Day, the Craft of Character class set up a table in the CAB to sell love poetry, and Carl, who was in the class, set up next to us with his etched jewelry. I wrote a dolphin poem for his daughter Carla, who

kept having dreams in which she was a dolphin. She still does, apparently. He told me about the *Ragalin*, Neil Young's boat, which he had visited several times and was friendly with the crew of. A day or so later I watched Carl and his girlfriend Jen follow a frog up the incline where the path to the dorms meets the staircase to the CRC, chasing it through the brush that grows there.

Carl was a gentle, friendly man, and a talented artist. My hardest problem in dealing with his death is that he will not say hi to me in the halls anymore. Four weeks after his death, I'm still looking for him out there, and I don't know how long that will last.

The art exhibit from the Grasp Tight the Old Ways Program is dedicated to Carl and features two of his etchings, one of which is reproduced above. It runs through January 31 at Gallery II in the Library.



Halvor M. Halvorson at a board of trustees meeting in 1974.

# New Evergreen recycling coordinator hired

by George Leago  
At long last! I wish to announce the appointment of Gregory Wright to the position of Recycling Coordinator. Greg will begin work in his new capacity on Feb. 1.

Greg is coming to Evergreen with fifteen years experience in the recycling industry. In his most recent position, he has served as Executive Director of the Washington State Recycling Association the past two years. Greg has also worked with Bayshore Enterprises and the Washington State Department of Ecology in the Port Townsend area. Greg's past successes include writing, seeking and receiving governmental grants to help fund recycling projects on the Olympic Peninsula. I am thankful that we have attracted a person of Greg's caliber to fill a key role in getting Evergreen's recycling program into motion after a period of awkward and frustrating delay. I also wish to thank the members of the Evergreen community for the exceeding patience, understanding and support through the past three months of budget difficulties, holidays and procedural delays.

Though it may seem that recycling on campus is at a standstill I assure each of you that is not the case. Recycling has continued through the work and dedication of many people who deserve recognition and thanks.

Mark Kormondy, temporary refuse collector; Don Price, maintenance

mechanic and fabricator; and Mark Lacina of Housing Maintenance have dedicated many hours to making improvements in the collection process as well as the organization and cleanliness of recycle collection areas. They have helped collect tons of recycled materials, cardboard, paper, cans, and glass.

Bonnie Ward, working from custodial services, has worked nearly single handed in moving paper, cans and glass throughout the buildings to the loading dock collection sites. She has cleaned, organized and sorted recycling commodities for efficient recycling. Her dedication is equalled by none. We all owe her thanks and appreciation. (Good

work Bonnie)  
As if this were not enough, Glen Duncan, the past coordinator has voluntarily returned to help with vendor coordination, advice and moral support for me.

Several volunteer students, organized by student Chris Bridgeford, have helped keep house and organization in the housing areas. They have sorted, cleaned, organized and educated while working with Mark Lacina. They have helped make recycling a community effort.

Last but not least has been the efforts and support of the coordinator rehiring committee, Vern Quinton, Jill Lowe, Cliff Hepburn, Mark Kormondy

and Mark Lacina. These folks helped wade through the difficult task of reviewing and choosing the most qualified candidate for Evergreen's benefit.

With the announcement of this position I can assure you that you will hear much more about Evergreen's recycling program (and much more often). It will be our goal to provide a well coordinated, phased and communicative program in the coming years. As soon as we can get Greg to work, you can all look forward to the opportunity to meet with us and discuss recycling ideas, concerns, and have the opportunity to participate in Evergreen's recycling program. Thanks for your patience and support.

<p><b>CLASSIFIED RATES:</b> 30 words or less: \$3.00 Business Rate: \$5.00 PRE-PAYMENT REQUIRED Classified Deadline: 5 pm Monday</p>		
<p>TO PLACE AN AD: PHONE 866-6000 x6054 OR CONTACT THE CPJ, LIB 250. OLYMPIA, WA 98505.</p>		
<p><i>Classified Ads</i></p>		
<p><b>Wanted</b> Partner for TESC massage class. M/F. Class meets Mondays 6:30-9:30 in the evening on campus. Next class 2/27. My partner cancelled. Call me, Shannon 943-9974.</p>	<p><b>Help Wanted</b> Camp Counselors/Cooks/Nurses/Waterfront/Wranglers wanted for Girl Scout youth camp. Must enjoy working with children in outdoor setting. Past camp experience not required. Salary/meals/lodging/training/on-job experience provided. (206) 633-5600 for application. EOE.</p>	<p><b>Help Wanted</b> <b>Returning students:</b> To be filled February, Business Manager intern to take position of B.M. '92-'93 Must be able to work 16-20 hours '92-'93 all year. Call Doug Smith @ x6054 for details. <b>Part time sitter for teenager with developmental delays</b> Mondays 2:30-4:30 -- also occasional evening or weekends. Requires caring individual with understanding of special needs. Own transportation necessary. Ph. 786-6703.</p>
<p><b>Miscellaneous</b> ERRATA: Higher tuition means work harder and apply for more scholarships. This'll be a real toughie for some folks. Think of it as natural selection at work.</p>		

# Housing turns deaf ear to campus bands

by RJ Nesse  
In my third life I was an electric guitar.

Perhaps this is why I was particularly appalled when Housing announced its "banned bands" rule this fall.

## Viewpoint

In an interview with Loren Rupp, (Sept. 26, CPJ) Brad Carlson, Housing's Asst. Director of Student Services, explained that "the rule became necessary due to complaints about noise levels."

I had visions of swarming student managers kicking over amps, while a large, burly, campus security stud drove steel-toed boots through the bass drum head.

Happily. Ohhhh, so happily, this has not been the case.

Bob Carlson was unavailable for comment, but as far as the highly informed CPJ Arts and Entertainment staff can fathom, the only show that has been "dispersed" under the new rule was the fall quarter *Helltrout* show in K-dorm (which was, by all accounts wonderfully out of control, and probably deserving to be dispersed).

Members of *Chrome Mary, Shark Wig, Molten Iguana, POWER CREW, Ereezer Burn, Inbred White Bread*, and even our own Mike Mooney have played live, (with and without alcohol, and certainly without incident), in the dorms.

It's a good thing. And with that, this live music groupie would like to extend a personal thank you to the folks at Housing for choosing not to be fascists.

RJ Nesse lets live music rock her world. See ya'll Friday.



Joe Geirsch on bongos, with guitarist "Dan" -- Live in Phase II. photo by Seth Long

# New year calls for more HIV/AIDS awareness

by Tod Streater  
Happy new year everyone! Congratulations to all for making it through the last year. You'll never guess what I got for Christmas. That's right, an actual AIDS diagnosis! For those of you who don't know, that is different than being HIV positive.

The old definition of AIDS meant you had the HIV antibody, and you had one of four diseases peculiar to HIV such as Pneumocystis Carini Pneumonia or

Cytomegalovirus or Mycobacterium Avium Complex or Kaposi's Sarcoma. (Big words, I know). The new definition of AIDS is your T4 count is below 200 and you are HIV positive. Most people have T4 counts between 1000 and 2000, my T4 count is 16.

This new diagnosis is both good and bad. It is good because now the government will pay for all my medical costs and I get a monthly check without having to work for it. But it is bad because this means my health is seriously rocky and I couldn't work full time if my life depended on it.

My strongest hope is that we find a cure or treatment for AIDS before the government runs out of money to keep me alive. There are advances in this arena, though they are not fast enough to suit my particular taste.

Now let's get to the good news, The costume shop on campus (x6081) will be open on the second and fourth Wednesday night of each month for those of us who want to make a panel for the AIDS Memorial Quilt. You must bring your own materials but all the equipment is available for use.

Do you want more good news? O.K., the New Years benefit for the

Olympia AIDS Task Force raised more than \$1200 and I hear it was a great show too. Thanks to all who worked so hard on it.

Have you been tested for HIV lately? You should. If you had unprotected sex even once in the last ten years you are at risk of contracting HIV. If you are HIV negative and practice safer sex you can stop worrying about it and if you are HIV positive you can immediately begin treatment. I don't believe HIV is

AIDS Task Force at 357-2375. We will be happy to steer you in the right direction for the newest information.

One more important thing for you to know, people with AIDS are NOT victims! To call me a victim implies that I have no power over my life. If I let the doctors have complete control of my life I'd probably be dead by now. If I let my family have control of my life I would probably be dead by now. I am in control. I am constantly researching ways to keep myself alive. If I ever hear you call me an AIDS victim the world will know your ignorance by the sharpened pencil sticking out of your ear. A term I prefer is person with AIDS (PWA) or person LIVING with AIDS (PLWA).

I would like to state, for the record, I am not an expert about AIDS or HIV. I am just trying to put a human element onto all these new terms. This is a real disease that anyone can get. There are no restrictions about age or sexual preference involved. If you are having unprotected sex you can get HIV, it's that simple. The fastest growing group of people getting infected with HIV are teenagers. When I was a teenager I thought I was indestructible. I was wrong and now I am paying for it. Please use your brain and use your latex (condom or dental dam).

Todd Streater plans to write a weekly column for the CPJ.

**To call me a victim implies that I have no power over my life. If I let the doctors have complete control of my life I'd probably be dead by now.**

necessarily deadly, I believe it is a chronic treatable disease. With early enough treatment the progression to AIDS can be slowed dramatically.

I have used a lot of terms that you may never have heard before or maybe they are unclear in your mind but you can fix that problem right away. Call me at x6081 on campus or the Olympia

**ONLY \$1**  
Feb. 6 - Feb. 13

**CPJ LOVE LINES**  
Express your undying devotion with up to 30 words in a special Valentine classified ad

Submit and pay for your Valentine at the CPJ office, CAB 316.

**You Are Invited!**  
...to a FREE taste test!

Northwest Food Service is excited to bring to the Deli some new health food choices. In order to better fit the need of our customers, we have ordered some new products and we want you to taste them. January 27th - 31st we will be taste testing these products in the Deli area between 11:30-1:00 only. The following are just a few of the items we will have for you to taste:

- Tofu Pups (tofu hot dogs)
- Nancy's Yogurt
- Edensoy Vanilla Drink (soy drink)
- Mini Popcorn Rice Cakes, Honey Nut Cakes, Apple Cinnamon cakes.
- Organic Cider
- Blue Sky Soda

...just to name a few!

NW FOOD SERVICE

ROOVY NEW HATS TIME AFTER TIME 412 WASHINGTON - OLY

doc martens

WEEP NO MORE! they're here... cool tights galore

vin'ags & NEW

**SKI CHEAP**

Mondays: Feb 3 & Mar 2  
Fridays: Feb 21 & Mar 6  
\$6 van fee  
\$16 Crystal Mountain lift tickets  
Snowboards, too!

Space limited. Sign up and pay van fee by noon of the Thursday before each trip in the TESC Rec Center Office, CRC 210. For more info call Rec Sports, ext. 6537

# Mindscreen presents movies all quarter

## THE THIRD FLOOR STUDENT GROUPS WEEKLY

by Paul Henry

Got nothing to do on Friday night? You might wish to consider patronizing the Winter Quarter International Film Festival, right here on campus in the lecture halls. For the remainder of the quarter, Mindscreen Productions will be presenting two different movies every Friday evening from all over the globe. The best part about it is that you can broaden your horizons without paying a dime--there's no admission fee. Watch this space every week for information on the current

features.

Week of January 23-29, 1992

•On Thursday, Jan. 23, at 8 pm, **Student Activities** will bring the century-spanning music of international recording artist ERIC ENGERBRETSON to the Evergreen Recital Hall. This concert is free to Evergreen students and to the general public. For more information contact Javier O'Brien at 866-6000 x6220.

•On Friday, Jan. 24, **Mindscreen**

Productions presents a therapeutic night of documentary films. *Three Approaches to Psychotherapy* contrasts the opinions of three professionals about the mental condition of a common patient. *A Matter of Heart* documents the life and mind of Karl Jung while elucidating his unique philosophies on society, history and the mind. Please note that this event will take place in LH 5 starting at 8 pm. We will return to our regular space in LH 3 next week when we present *The Nasty Girl* and *Taxi Blues*.

•**The Parent Support Network** is an organization for parents to help themselves. We have a co-op child care list, a clothing and equipment trade list, an open library for information on parenting, developing children, positive affirmations, and outside resource information, and updates on our family activities;

swimming, dancing, potlucks, study groups, etc. If you have any questions contact Crystal at 866-6000 x6636.

•**MEChA** (Movimiento Estudiantil Chicano de Aztlan) wants you to join us in planning a "Cinco de Mayo" celebration. We meet at 5 pm on Wednesdays in MEChA's office in CAB 320. We are also looking for people to help on the statewide MEChA conference to be held on Friday, Nov. 1, 1992. Any ideas you have about workshops or other activities are welcome. Call 866-6000 x6143 and ask for George or Mario. We are looking forward to serving this community.

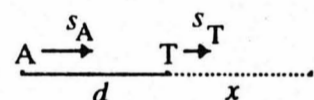
Paul H. Henry is the Public Information Coordinator for Student Activities.

# Achilles is still trying to catch up - part II

by Rafael Marino

Last time we were looking at Zeno's paradoxical stories. One claimed that Achilles will never catch up with the tortoise even if Achilles is faster than the tortoise, and the other one that an arrow (or any other object) could never go from one point to another. We will look at the Achilles-and-tortoise argument since, once we see what is wrong with it, we will find the arrow argument even easier to deal with.

Let us denote  $d$  the handicap that Achilles gives the tortoise,  $s_A$  Achilles' speed,  $s_T$  the tortoise's speed, and  $x$  the distance that the tortoise travels before Achilles catches up with her.



Positions of Achilles (A) and the tortoise (T) at the beginning of the race.

When Achilles has caught up with the tortoise he has traveled the distance  $d+x$ , the time it has taken the tortoise to run the distance  $x$  is  $x/s_T$ , and the time it has taken Achilles to run the distance  $d+x$  is  $(d+x)/s_A$ . Since these two times are equal, we have

$$\frac{x}{s_T} = \frac{d+x}{s_A}$$

and therefore

$$x = \frac{s_T}{s_A - s_T} d$$

Suppose  $d = 1$  mile,  $s_A = 10$  m.p.h., and  $s_T = 5$  m.p.h. (I know that tortoises are much slower but suppose - to simplify the calculations - that this is her speed.) Then  $x = 1$  mile, which we could have concluded more easily by considering that Achilles runs twice as fast as the tortoise, so while the tortoise runs 1 mile, Achilles

## THE MATHEMATICAL WITNESS



runs 2 miles and catches up with the tortoise; notwithstanding Zeno's argument. This, by the way, will happen exactly 12 minutes after the race starts (in case there is still any doubt).

Let us follow Zeno's reasoning. After 6 minutes Achilles has run 1 mile and will be where the tortoise was at the beginning of the race, and the tortoise has meanwhile advanced 1/2 mile. After 3 minutes, Achilles has run 1/2 mile and will be where the tortoise was last, and the tortoise has advanced 1/4 mile, and so on. Achilles will run then a total distance of

$$1 + \frac{1}{2} + \frac{1}{4} + \dots$$

miles or 2 miles, as we already know.

The apparent paradox arises when we think of the infinite number of instances at which we can argue that Achilles is still behind the tortoise and assume that the time it takes for Achilles to catch up with the tortoise being an infinite sum of times (the times between these instances) must be infinite. However, a finite quantity can be (or can be represented as) an infinite sum.

Is it really true that as long as Achilles runs faster than the tortoise, he will eventually catch up with the tortoise?

As long as Achilles keeps running at a constant speed faster than the tortoise, the answer is "yes." Suppose that Achilles runs at a speed one thousandths faster than the tortoise, so that when the tortoise has run 1 mile, Achilles runs 1.001 miles, and the distance between the two is .999 miles.

Every time that the tortoise advances one mile, Achilles diminishes the distance between them by one thousandth of a mile. Thus, 1000 miles ahead (of the initial point for the tortoise), Achilles catches up with her.

But suppose that Achilles decides to run in a strange way: Initially he runs twice as fast as the tortoise but as soon as he gets to the starting point for the tortoise (the tortoise has moved 1/2 mile), he changes his speed and decides to run 3/2 as fast as her. This way, while Achilles runs the 1/2 mile that the tortoise has already run, she runs 2/3(1/2) = 1/3 of a mile. After Achilles has run this 1/3 of a mile, he has run a total distance of

$$1 + \frac{1}{2} + \frac{1}{3}$$

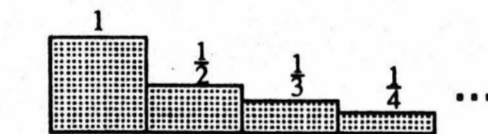
miles. Next Achilles runs 4/3 as fast as the tortoise, so that now he has run a total distance of

$$1 + \frac{1}{2} + \frac{1}{3} + \frac{1}{4}$$

miles. Next Achilles runs 5/4 as fast as the tortoise, and so on and so on. So, for Achilles to catch up with the tortoise, he must run a total distance of

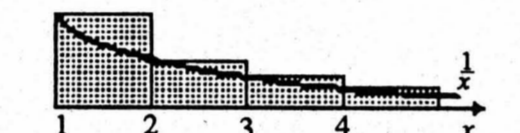
$$1 + \frac{1}{2} + \frac{1}{3} + \frac{1}{4} + \dots$$

miles, where - as before - the ellipsis means that we have an infinite sum. The reader might be assuming by now that these infinite sums are always meaningful. We should be careful, however. Let us visualize this infinite sum as the area of a sequence of rectangles each with base 1 and their heights: 1, 1/2, 1/3, 1/4, ...



(I will ask the reader who is not familiar with calculus to bear with me for a few

lines; you still can get the general idea of what follows.) Place these rectangles in a coordinate system on top of the x-axis so that the lower left corner is at the point of coordinates (1,0). Draw also the graph of the function  $f(x) = 1/x$ , to the right of the value  $x = 1$ .



Now, the area of the region above the x-axis, under the function  $1/x$  and to the right of 1 could be found using integral calculus. It should be the integral

$$\int_1^4 \frac{dx}{x}$$

except that calculus tell us that this is what is called an "improper" integral, meaning that if we try to give it a value, it turns out to be bigger than any number. In other words, we cannot give it a value, and this means that the region under the function does not have a finite area.

If the region under the function  $f$  cannot have a (finite) area, the above infinite sequence of rectangles cannot have a finite area either since it should represent an area bigger than the one under the curve  $f$ .

$$1 + \frac{1}{2} + \frac{1}{3} + \frac{1}{4} + \dots$$

is bigger than any number we can think of, and Achilles will never catch with the tortoise, even if he is always running faster than her.

Rafael Marino is the Math Coordinator at Evergreen.

**Sperm donors needed in the infertility program at Olympia Womens Health.**  
 \$30 for every semen sample.  
 For detailed information, please call:  
**786-1517**  
 Ask for Dr. Cai  
 OLYMPIA WOMENS HEALTH  
 located at 403-E Black Hills Lane SW

**Saturday Jan. 25 1 pm CRC Gym**  
**FREE**  
 Court shoes required  
 Sign up at CRC entrance

**Schick SUPER HOOPS 92**

- For TESC women and men undergrads and grads
- Free Schick disposable razors for all
- Schick gym bags and T-shirts for winning women's and men's teams

**3-on-3 Basketball Tournament**  
 Winning teams advance to regional playoffs in Oregon  
 For more info call Rec Sports, ext. 6537

**FUJI TERRIVAKI**

**PHO' -- Beet Noodle Soup Between Seattle and Portland!**  
**VEGGIE CHOW MEN, UEGGIE FRIED RICE with ALMONDS, STIR FRIED ZUCCHINI with STEAMED RICE!**

**214 W. 4th • Olympia 352-0306**

# Forum

## One year anniversary

by George Stankevitch

On the cold clear night of January 16 over 60 people gathered on the state house steps to mark the one year anniversary of the Gulf War and the death of 250,000 Iraqi civilians.

Beneath the sheen given off by the illuminated flags, Larry Mosqueda spoke, declaiming the hypocrisy of a war which, according to the theme of the vigil, has not yet ended.

## Analysis

A moment of silence was declared. Members of the crowd rose to speak. Demonstrators silently laid flowers on the Capitol steps, and the crowd settled in to stay the night.

After the ceremony ended those who could not stay began to disperse. Those who stayed pulled up blankets, drank coffee. In an effort to keep warm the demonstrators held vigil candles in their hands and huddled around a propane space heater.

In the morning ten protestors remained, sitting in the white light among a scattering of candles, blankets, and the doughnuts that had been brought for communal consumption.

At about ten a school bus of high

school students arrived to tour the capitol. The students solicited reactions were for the most part positive, ranging from "I think it's [their demonstration] pretty cool," to "It [the war] never should have happened," and "I'm glad they're [the soldiers] back."

The unsolicited reactions were less positive. "They look like a bunch of drunks," a boy in the front row exclaimed staring at the demonstrators. A girl mused, "Why would they want to waste their time?"

The protest seemed to have an impact among the high school students. A few students even lingered to read the signs emblazoned with "Bring Bush to Trial for Murder" and other slogans of the war.

The reaction among the demonstrators was mixed with most thinking the vigil a moderate success.

Others commented "I'm psyched; there were about 70 people...."

Referring to the TESC contingent, the demonstrator continued, "I would have liked to have more, [student input] but this is Evergreen, where everyone talks and talks but never walks."

George Stankevitch is a frequent contributor to the CPJ.

## Greener protests towing

by Jeremy Pinkham

The invention of bureaucracy is one which seems to be incompatible with the notions of personal honor, tolerance and mutual respect.

I say this upon being towed from the Evergreen dorm loop January 6.

The situation is simply this: the school had every legal right to do so, for I, upon intending to momentarily park there in order to return my groceries to my room, became distracted and forgot about it entirely. Since I was at this time rushing to put together my independent contact, I kept busy for three days during which I had no need for my car. Finally, Thursday, I walked out to the parking lot and the situation forced its way into my mind. So, the situation was entirely legally justifiable. The dorm loop is, after all, covered in signs which warn that those who park beyond the fifteen-minute limit, "violators" in their parlance, will be towed. Again, it was perfectly within the school's right to tow me. I do not contest this fact.

The result was two bills, a \$5 ticket for parking too long, and then a \$143.50 bill for the tow.

This brings me to my point. The human animal, by its very nature, forgets. The impersonal force of nature may not forgive this limitation, i.e., if I forget to plant my crops, I will die. But human beings, between ourselves, are not impersonal forces.

Bureaucracy, on the other hand, claims to be impersonal. From my conversation with Security, upon learning that I had been towed without being contacted, I know the standard response: "The sign plainly states the facts. You park there too long, you get towed. We're more than lenient."

But bureaucracy is not impersonal, if only for the simple fact that it is continually put in place and reinforced by individual human beings. In turn, bureaucracy continually reinforces these individuals, reassuring them that "hey, I'm sorry, but those are the rules--no exceptions." But we are human beings. We are capable of making distinctions that our rules cannot. The distinction of which I speak in this case is simply that I did not

intend to cause harm, and I have never made this mistake before.

Secondly, I am a resident of housing. I have been required to pay a fee to register to park here. I do not contest the amount of this fee or the fact of its existence, simply that upon paying this fee, I was required to put a sticker on my car window, a sticker that bears the same number as a form possessed by the school, a form which bears my name and phone number. If anybody in the chain of bureaucracy which collectively decided to punish me for my actions had decided to take the time to call me, I would have instantly removed my car. The response is obvious. "We don't have the time to baby our parking offenders. It would be too much of a hassle to verify that those who said they would have in fact moved their cars." If this is the case, even though I am not sure I accept this logic, I simply ask for one favor: when you have called to have a car towed, take a moment to call the person who has just been punished. Don't leave it unspoken, like some act of God. Take responsibility for your punishments, person to person. Because of the simple fact that no one called me to inform me of what had taken place, my bill rose higher (in storage fees) for each day before I found out for myself. And when I did find out that my car was gone, it might as well have been stolen. No one called. My car was just gone. Beyond this, no one at the school could tell me if it had been towed or not. The towing company couldn't have called me if they had wanted to. They just had my car. The school, on the other hand, had my phone number from the beginning, but decided to let me be punished from afar, a voiceless, faceless punishment that grew with each day that I was unaware of its existence.

Shouldn't our rules make human relations obey justice and compassion, rather than simply rules themselves? We cannot let the difficulty of personal choice lead us to hand our decisions over to a mechanics which can only serve to coarsen us by making us fit between its chains and cogs.

Jeremy Pinkham is an Evergreen student.

**JERRY BROWN'S 1-800 NUMBER:**

OH, YESSSSS.... YOU WANNA KNOW WHAT I'M THINKING? I'M THINKIN' OF A BIIIG, BAD ENTRENCHED INCUMBENT BEING THROWN OUT OF OFFICE BY TERM LIMITS... THIS EXCITES ME! DOES IT EXCITE YOU? OH... OOOHH-H-H... I BET YOU WANT TO SEE CONGRESS GIVE BACK THAT BIG FAT PAY RAISE, DOING A MAN WHO FIGHTS INSIDERS... I AM PLUNGE TO THE HE POWER STRUCTURE... TID OR LESS... ILL BE FUNN... GIVE ME Y... AND VOTE! THE BUMS ANTI- INCL

## Innocent before guilty

by Dia Taylor

I wish to direct a few words to feminist men and women regarding sexual harassment charges.

There is nothing especially "patriarchal" about the maxim "innocent until proven guilty." A rumor alleging that a man did sexually harass or is being charged with sexual harassment is not a good reason to avoid associating with that man.

Such a rumor does not even warrant repeating, for spreading slanderous rumors about that man is a type of punishment of that man, and unless you have very good reasons to believe that he did indeed sexually harass someone, you cannot declare that man guilty and deserving of punishment.

Feminists only discredit themselves when they assume that any man accused of a crime by a woman is necessarily guilty of that crime. And feminist students only forsake their own chances for intellectual development when they refuse to take a class from a professor who is rumored to have sexually harassed someone, if their refusal is based solely on such a rumor.

When feminists presume guilt without sufficient reason, punish randomly, and take heresy as fact, they are acting on the same (non)principals which have permitted injustices against women over the centuries. Such a statement may require considerable defense at a school where it seems to be commonly held that there is no truth, but only ideology.

However, here I want only to say that when you, by encountering a rumor of sexual harassment, are put into the position of judge, you have (at least) these two principles to choose from: "innocent until proven guilty," or "a woman's testimony is always more credible than a man's." I believe that feminists have much more to gain by adopting the former principle. Feminist projects founded upon self-deceit are likely to self-destruct.

Unfortunately, it is often simply impossible to know who is telling the truth, accuser or accused. In these cases, I believe that it is wiser to err on the side of allowing the guilty to go unpunished rather than punishing the innocent. The aim is, of course, to err on neither side, and this aim is facilitate by a willingness to reason coolly about such charges.

I do not mean to discourage victims from reporting incidents of sexual harassment. This is my last year at Evergreen, and, in a moment of premature nostalgia for classes bygone, it struck me that all of the best professors I have had, have been shadowed by rumors of sexual harassment. I neither experienced nor witnessed a hint of harassment in or out of the classroom. I hope this letter will persuade women students to suspend judgement when they hear these inevitable rumors. Don't let what you don't know to be true deter you from an excellent education. Thanks for listening.

Dia Taylor is an Evergreen student.

**VOLUNTEER**  
 Comics Page Editor: Edward Martin III  
 Blotter Compilation: Bryan Connors  
 "Seepage" Page Editor: Dove Moir  
 General: Bryan Connors and Scott Maxwell  
**EDITORIAL-866-6000 x6213**  
 Editor: Rachel Nesse  
 Managing Editors  
 News/Operations: Giselle Weyte  
 Arts/Features: Andrew Hamlin  
 Layout Editor: Linda Gwilym  
 Layout PREP: Mike Mooney  
 Photo Editor: David Mattingly  
 Copy Editor and Typist: Leann Drake  
**BUSINESS-866-6000 x6054**  
 Business Manager: Doug Smith  
 Ad Sales: Rey Young  
 Ad Layout: Paul Henry and Deborah Roberts  
 Ad Proofreader: Jon Hyatt  
 Distribution: Paul Henry  
**ADVISER**  
 Dianne Conrad  
**The User's Guide**  
 The Cooper Point Journal exists to facilitate communication of events, ideas, movements, and incidents affecting The Evergreen State College and surrounding communities. To portray accurately our community, the paper strives to publish material from anyone willing to work with us.  
 Submission deadline is Monday noon. We will try to publish material submitted the following Thursday. However, space and editing constraints may delay publication.  
 All submissions are subject to editing. Editing will attempt to clarify material, not change its meaning. If possible we will consult the writer about substantive changes. Editing will also modify submissions to fit within the parameters of the Cooper Point Journal style guide. The style guide is available at the CPJ office.  
 Written submissions may be brought to the CPJ on an IBM formatted 5-1/4" disk. Disks should include a printout, the submission file name, the author's name, phone number, and address. We have disks available for those who need them. Disks can be picked up after publication.  
 Everyone is invited to attend CPJ weekly meetings; this week's meeting will be held Thursday, at 4:30 pm in CAB 316.  
 If you have any questions, please drop by CAB 316 or call 866-6000 x6213.  
**Advertising**  
 For information, rates, or to place display and classified advertisements, contact 866-6000 x6054. Deadlines are 5pm Thursdays to reserve display space for the coming issue and 5pm Mondays to submit a classified ad.

# Arts & Entertainment

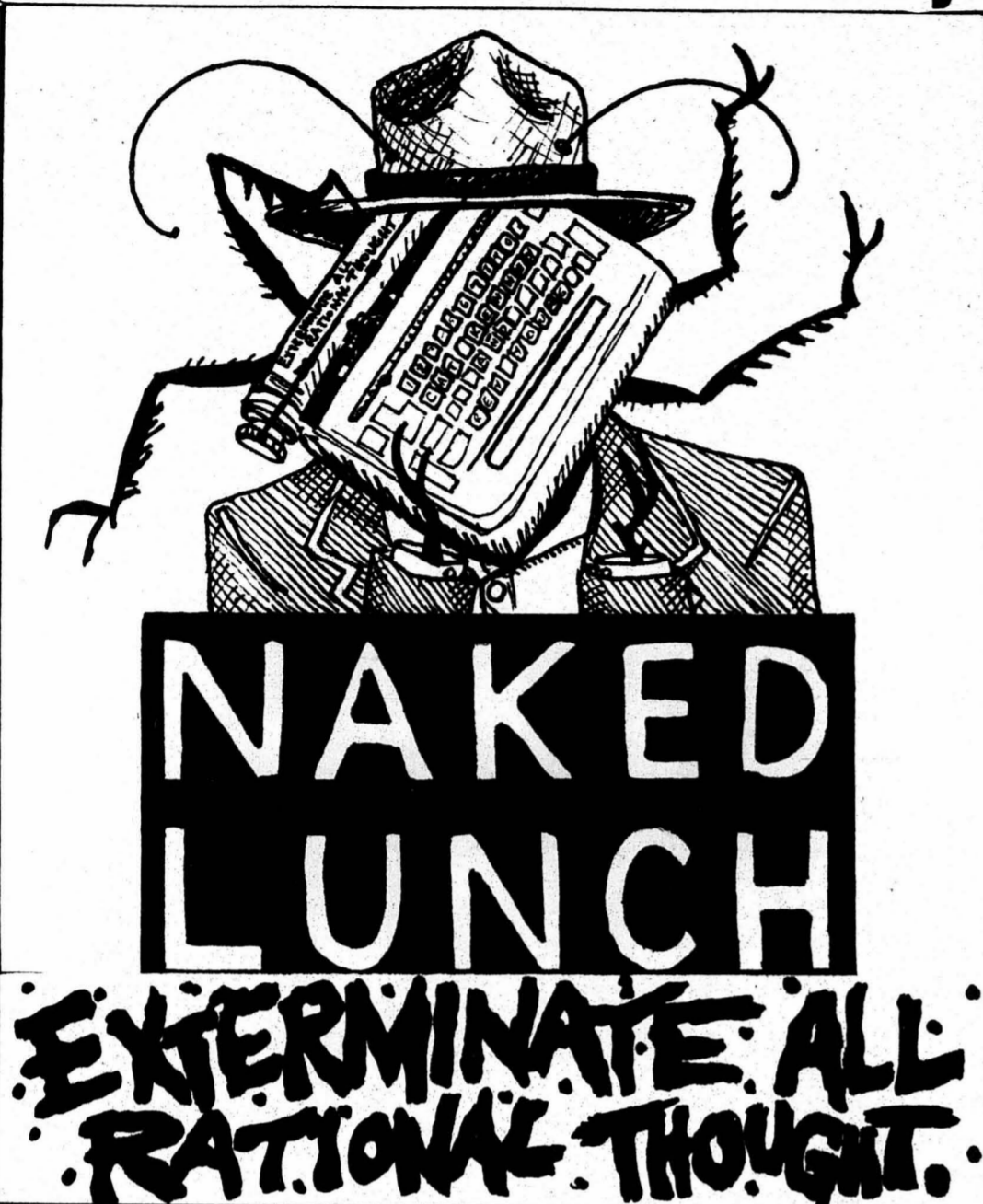
## Cronenberg's Naked Lunch: The joys of jism

by Charles Wright

**NAKED LUNCH**  
A FILM BY DAVID CRONENBERG  
STARRING PETER WELLER  
ADAPTED FROM THE NOVEL BY WILLIAM S. BURROUGHS  
SEATTLE: METRO CINEMAS

Early in David (The Fly, Videodrome, Scanners) Cronenberg's cinematic companion to William S. Burroughs' extreme novel, the hero William Lee (a surrogate for Burroughs) coldly proclaims to the unidentified Jack Kerouac and Allen Ginsberg, "Exterminate all rational thought. That's all that matters." Hold that morsel tight, for it is perhaps your only guide through the ensuing hallucinatory landscape of mugwump jism, roach poison junkies, giant aquatic Brazilian centipedes, and conspiratorial typewriters that transform into talking cockroaches.

The film is a voyeuristic study of why Burroughs wrote at all, and why he wrote what he did. The most tragic and sordid of circumstances propels Lee (brilliantly played by Peter Weller of RoboCop fame) into a paranoid world where he must write to survive, while confronting and challenging the shadowy, monolithic Interzone, Inc., identified as prime evil by Lee's typewriter/cockroach/muse/controlling agent. But he greets these horrors with an almost perverse cool, fueled perhaps by his diet of nefarious black meat, that plunges him deeper and deeper into his own self, as the line between real and



hallucinatory is completely eroded.

Naked Lunch gives the audience a glimpse of a junkie struggling with worlds, hells, of his own creation. But Cronenberg expects no sympathy, for Lee accepts his task of infiltrating the netherworld of 1950's Tangier, with ambivalence at least, if not open willingness. Nor does the film elicit any judgement, neither approval nor condemnation, of the events that unfold.

The point seems to be the erasure of the boundaries of the "real," allowing the imagined to freely mingle like uninvited but acceptable guests, in order to portray the forces that brought Burroughs' words to the page. In the end, you find yourself becoming quite comfortable with talking assholes and a woman who shoots bug powder into her breast.

Cronenberg leavens this masterful ambivalence with a humor that somehow transcends its horrific subject matter. Lee's story of someone's dangling hemorrhoids wrapping around a car wheel and disemboweling their owner (mercifully not depicted onscreen) is about as disgusting as you could possibly imagine, when taken at face value. But in the telling, we lose track of where we are, of what exactly we're hearing, and the hilarity of the story strips the words of the "real" meaning we bring to them. Thus, we've just been given a taste of Lee's Interzone.

Charles Wright is a real cool writer and I'd like to meet him someday. This article mysteriously materialized in my "in" box. Charles, where are you?

## Our correspondent finds comforting warmth at Barb's Soul Cuisine

Ribs, greens, and soul goodness galore!

by Jason Orloff

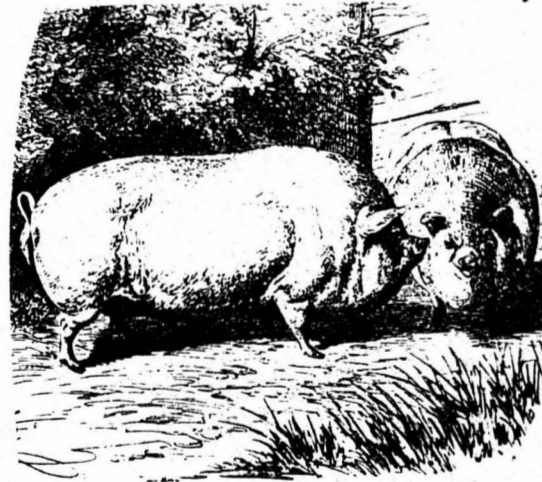
Through the mists the moon had just begun to peek. It was a Friday night and I could almost hear Olympia's night life beginning to growl. Actually, the two alarm clocks in my roommate's room had gotten to be too much and after pounding, kicking, and screaming, he roused enough to shut them off and go back to sleep. Cripes.

Anyhow it was time to get out and explore; but I know what you're thinking, "Just where, in this thriving metropolis of Olympia, does one go?" Never fear! Daunting though the task is, I have taken it upon myself to go out every Friday night and explore the lonely streets of Olympia. Yeah, tough ain't it. Ahh, the pains of being a volunteer writer.

Remember the mist? Well it

wasn't just misty, it was cold too. Walking down Fourth Street I could feel the gentle tug of a...Blues Band! It was true. I'd know those warm, soul-rolling, spirit stirring sounds anywhere.

At 203 West Fourth Ave I found the source. Pulling open the door I found a refuge full of smiling, singing, laughing, and eating. What a place. People immediately moved to make room for my



faithful companion and me (just because

the streets are lonely doesn't mean I have to be).

She ordered a beer and I had tea. We settled back and were captured by the feeling of the place. The people performing were sweet to listen to; while the audience had that family feel which only comfortable and friendly people are capable of. As the night flew by we found ourselves sampling the more substantial fare.

I recommend the greens to anybody who hasn't had the chance to grow up with southern grandparents. That coupled with the use of bacon in almost everything, reminded me of summers at granma's.

For those of the vegetarian persuasion, however, I'd still recommend Barb's as a cool place to hang out. Barb O'Neil is a graduate of Evergreen's class of '77. She started her place about five years ago, and has become famous for her free Thanksgiving and Christmas meals. Barb's family operation is definitely a

contributor to our community worthy of our support.

The live music/open-mike starts at eight and goes until it's over, usually around twelve or one every Thursday, Friday, and Saturday night. On Friday the 24 you'll find Olympia's own blues band, "Blue Plate Special," rockin' it up around 8:30. If you're more interested in BBQ Soul Cuisine, the doors are open to serve from six to eleven every day except Wednesdays and Sundays. You can find Barbs on the south side of Fourth Ave just as you enter Olympia. Have a good one, and see you in the coming weeks.

Jason Orloff has always looked about three years older than he is. If you see him, see if you can guess how old he is now.

**Olympia Food Co-op**  
**WELCOMES**  
new & returning  
**EVERGREEN**  
**STUDENTS!**

come check out our fresh,  
organically grown vegetables.

921 N. Rogers • 754-7666 • 9am-8pm

**NOW OPEN**



**BULLDOG**  
**NEWS**  
OLYMPIA, WA

PERIODICALS  
OUT-OF-TOWN PAPERS  
FOREIGN PRESS

116 East 4th  
357-NEWS

# CALENDAR



Eric Engerbretson sings it like it is Sunday in the Recital Hall. courtesy S&A

behind the scenes at *Star Trek VI: The Undiscovered Country*. Tickets \$14 in advance, \$17 at the door, available at Ticketmaster (yuck, ptui) outlets. A presentation of Creation Entertainment. Yeah right.

THE FESTIVAL OF FILMS BY WOMEN DIRECTORS features mini-features by Su Friedrich and Ngozi Onwurah tonight at 7 pm at the Seattle Art Museum (SAM) at Second and University, downtown Seattle. Info: 621-2231.

**26 SUNDAY**

ALIEN AND ALIENS play this evening, starting at 7 pm, in Lecture Hall 5. Free. A presentation of Me and Him Productions.

**27 MONDAY**

EMPLOYEE/EMPLOYER RELATIONS IN THE WORKPLACE is a seminar today from noon to 1 pm in Library 1406A. Sponsored by the Career Development Center. Info: 866-6000 x6193.

THE INTERNATIONAL FESTIVAL OF FILMS BY WOMEN DIRECTORS features an evening of films by Yoko Ono, featuring a telephone hookup discussion with the artist afterward, tonight at 7 pm at the Seattle Art Museum (SAM) at Second and University in Seattle. Info: 621-2231.

**28 TUESDAY**

SINGLE PARENT SUPPORT GROUP meets each Tuesday at noon in Library 1509. Info: 866-6000 x6193.

EVERGREEN STUDENTS FOR CHRIST meet each Tuesday in CAB 108 from 7 to 8:30 pm. "The meetings center on different themes for spiritual growth as we sing, study, discuss, and pray with one another." Info: Greg at 866-6000 x6556.

ERIC ENGERBRETSON performs this evening at 8 pm in the Recital Hall at the COM Building. Free. He knows songs from today all the way back to around 1910, so check him out. No synths, no drum machines, all-natural ingredients. Info: 866-6000 x6220 or Luke Papineau at 509-838-3432.

**29 WEDNESDAY**

HIV/AIDS INFORMATION DAY today, sponsored in part by the Region VI AIDS Service and the People of Color Network, starting at 1 pm in Library 4300 with a traditional song from the Coyote Nation Singers; that's followed by a presentation from 1:30 to 4 pm by local filmmakers Tod Streater and Ricardo Ayala Cruz, and an open forum from 3 to 4 pm with "speakers from a diverse representation of many cultures." Catlin Fullwood, Executive Director of the People of Color Against AIDS Network, delivers a keynote address next. After a dinner break from 5 to 6 pm, a panel discussion featuring people living with HIV starts in Library 3500 at 6. ALS or foreign language interpretation, childcare, and transportation available with prior notice. Info: Gary Galbreath at 866-6000 x6462, or Suzanne Hiddle at 352-3664.

MEN'S NEXUS GROUP meets from 3 to 5 pm today, in the CAB pit, in the CAB pit (third floor, the side overlooking Red Square), until February 5, and thereafter in the S&A Conference Room. Info: 866-6000 x6462.

THE INTERNATIONAL FESTIVAL OF FILMS BY WOMEN DIRECTORS shows Mira Nair's *Mississippi Masala*, tonight at 7 pm at the Seattle Art Museum (SAM), Second and University in downtown Seattle. Info: 621-2231.

**30 THURSDAY**

"AGAINST PORNOGRAPHY: THE FEMINISM OF ANDREA DWORKIN" is a BBC documentary showing at 7 pm in CAB 110. Sponsored by the Women's Center. Info: 866-6000 x6162. ASL interpreter available with advance notice.

**23 THURSDAY**

TESC FENCING CLUB meets tonight and every thursday from 7 to 9 pm in the tesc library building, 3rd floor mezzanine. Info: Russ Redding at 786-8321.

ALCOHOLICS ANONYMOUS MEETING today in Lab 1 Room 1055 12:30 to 1:30 pm. Info: 866-6000 x6800.

ARTIST NORIE SATO exhibits her works at TESC's Gallery IV, fourth floor of the Library Building. Gallery hours are noon to 5 pm weekdays and 1 to 5 pm weekends. Info: 866-6000 x6488.

"PORNOGRAPHY: A Practice of Inequality" is a free slide show and discussion presented by the Women's Center tonight at 7 pm in CAB 110. Info: 866-6000 x6162. ASL interpreter available with advance notice.

THE INTERNATIONAL FESTIVAL OF FILMS BY WOMEN DIRECTORS holds an evening with Maragethe Von Trotta this evening, in Seattle, at the Egyptian Theater. Her film *The Lost Honor of Katharina Blue* shows at 6pm, followed by a reception with the artist at 7 and a second film, *The Return*, at 9. Tickets \$6 for one film and the reception or \$10. This evening not included in the series pass. Info: 621-2231.

**24 FRIDAY**

CANDIDATE FOR VICE PRESIDENT FOR STUDENT AFFAIRS PHYLLIS ETHRIDGE meets with students, staff and faculty of color from 9 to 10 am in Library 1419. An open meeting with students follows from 10 to 1:30 am in CAB 108, and she'll also attend an open community lunch from noon to 1 pm.

MINDSCREEN PRODUCTIONS PRESENTS a double bill of *Three Approaches to Psychotherapy*, a documentary with three different psychotherapists analyzing a single patient, and *Matter of Heart*, a documentary by Mark Whitney on Carl Jung, interweaving rare home movies with archival footage and interviews, tonight in Lecture Hall 5 at 10:20 pm. Free. Info: 866-6000 x6412.

FOUR SEASONS BOOKS welcomes Steve Charak, founder and publisher of *Young Voices*, featuring the work of young people. He'll speak about children's writing and share his own songs and stories. "While he works with young people, this evening is more for teen-agers and adults." It's all tonight at Four Seasons Books, 5th and Water in Olympia, at 7:30 pm. Free. Info: 357-4683.

BLUE PLATE SPECIAL, a blues band featuring "Betsy, the hottest blues singer West of Chicago," whoops it up tonight at about 8:30 at Barb's Soul Cuisine, 203 4th Avenue W. in Olympia. Info: 956-9835.

**25 SATURDAY**

AUDUBON SOCIETY FIELD TRIP TO HOOD CANAL today, to see winter ducks, loons, and bald eagles, starting from Woldens' Chevron Station in Shelton at 8:30 am. The public is welcome. Info: 352-7299 or Andrew Beelick at 426-6262.

SEATTLE STAR TREK CONVENTION from 10 am to 5 pm today and 11 am to 6 pm on Sunday at the Red Lion Hotel in Sea Tac, 18740 Pacific Highway South. Glory to Trek merchandise dealers, auctions, contests, news, gossip, Trek music videos, and "tons of fellow fans," also preview peeks at *Batman Returns* and *Alien 3*, and a special look



